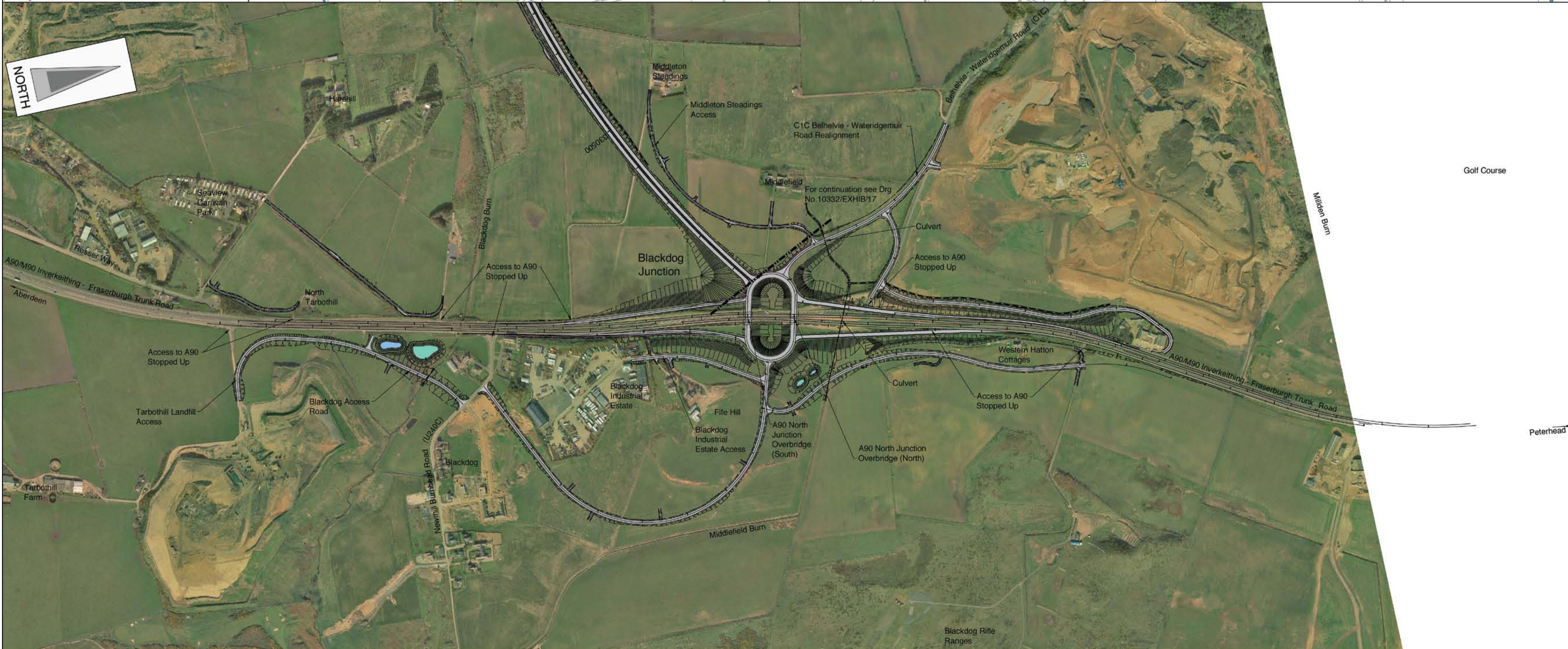


This map is based on Ordnance Survey material with the permission of Ordnance Survey on behalf of the Controller of Her Majesty's Stationery Office (c) Crown copyright 2007. Unauthorised reproduction infringes Crown copyright and may lead to prosecution or civil proceedings. Scottish Executive Licence number: 10002640 2007.



Notes
These drawings are for information only. The layout shown on the plan is indicative only and it may be subject to further design development. These proposals do not show all mitigation.

- ### Legend
- Proposed Route
 - Embankment
 - Cutting
 - False Cutting
 - Scheduled Ancient Monument (SAM)
 - Watercourses
 - Waterbodies
 - National Cycle Route
 - Residential Areas
 - Existing Roads
 - Buildings to be Demolished
 - Drystone Wall
 - BP Pipeline
 - Shell Pipeline
 - Existing Woodland
 - Former Plantation to be Replanted
- ### Planting Mitigation Proposals
- Landscape Planting Proposals Only
 - Ecological Planting Proposals Only
 - Ecological & Landscape Planting
 - Mixed Woodland Planting
 - Coniferous Woodland Planting
 - Broadleaved Woodland Planting
 - Scrub Woodland Planting
 - Riparian Woodland
 - Feathered Tree Planting
 - Extra Heavy Standard Trees
 - Standard Trees
 - Hedgerow
 - Species Rich Grassland
- ### Other Mitigation Proposals
- Proposed Drystone Wall
 - Proposed Noise Barriers
 - Proposed Footpaths
 - Treatment Ponds
 - Detention Basins
 - Proposals Pre-earthworks Drainage

0	Oct 07	For October 2007 Public Exhibition	SA	CWH	AMM
Rev	Rev. Date	Purpose of revision	Drawn	Checked	Approved

JACOBS
 95 Bothwell St, Glasgow, G2 7HX
 Tel: +44(0)141 204 2511 Fax: +44(0)141 226 3109
 www.jacobs.com

Aberdeen Western Peripheral Route

Drawing title
**EXHIBITION DRAWINGS
 SHEET 18 OF 18
 A90 NORTH JUNCTION**

Drawing status
PRELIMINARY

Scale 1:5000 @ A1 DO NOT SCALE
 Jacobs No. 10332

Drawing number
10332/EXHIB/18

Rev
0

This drawing is not to be used in whole or part other than for the intended purpose and project as defined on this drawing. Refer to the contract for full terms and conditions.