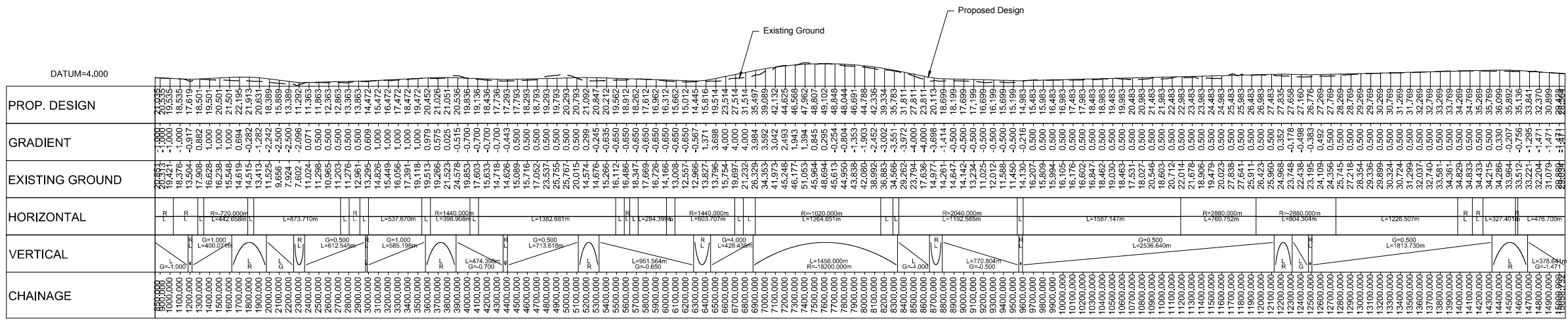


Reproduced by permission of Ordnance Survey on behalf of HMSO.  
 © Crown copyright and database right 2014. All rights reserved.  
 Ordnance Survey Licence number 100046668.

NOTES:  
 1. All dimensions are in metres unless stated otherwise.

This OS Mastermap was obtained in March 2014 and is for illustration purposes only.



LONGITUDINAL SECTION (CHAINAGE 850m TO 1058.73m)



A	08/09/14	DMRB Stage 2 Report	DAD	CMM	GAH	EHB
Rev	Rev. Date	Purpose of revision	Drawn	Checked	Rev'd	Apprv'd

**JACOBS**  
 85 Bothwell St, Glasgow, G2 7HX  
 Tel: +44(0)141 243 8000 Fax: +44(0)141 226 3109  
 www.jacobs.com



Drawing title  
**DMRB STAGE 2  
 INVERNESS TO GOLLANFIELD  
 OPTION 1B(MV) PLAN & PROFILE  
 CH 850 TO CH 1058.73**

Drawing status  
**PRELIMINARY**

Scale  
 AS SHOWN @ A1 DO NOT SCALE

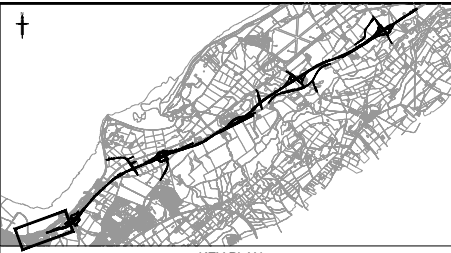
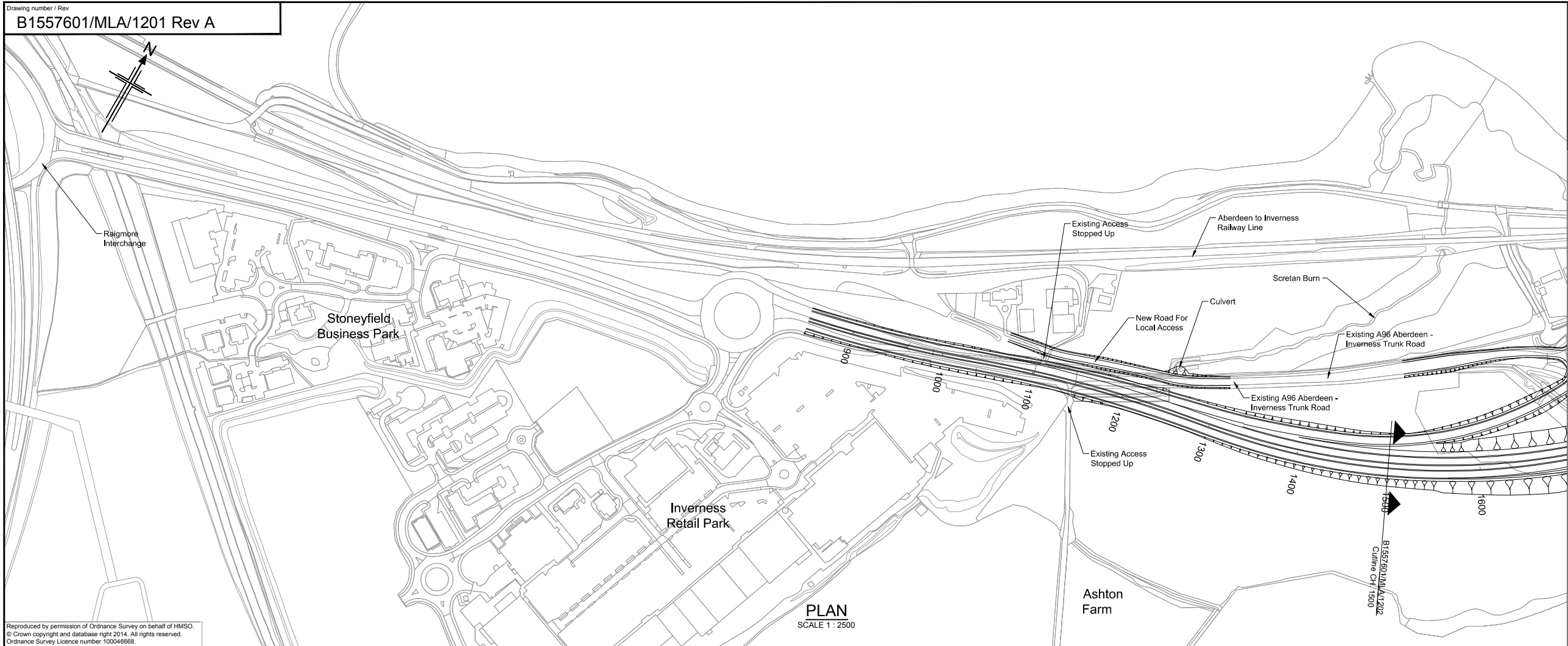
Jacobs No. B1557601

Client no.

Drawing number  
**B1557601/MLA/1220**

Rev  
**A**

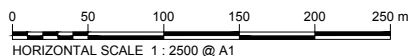
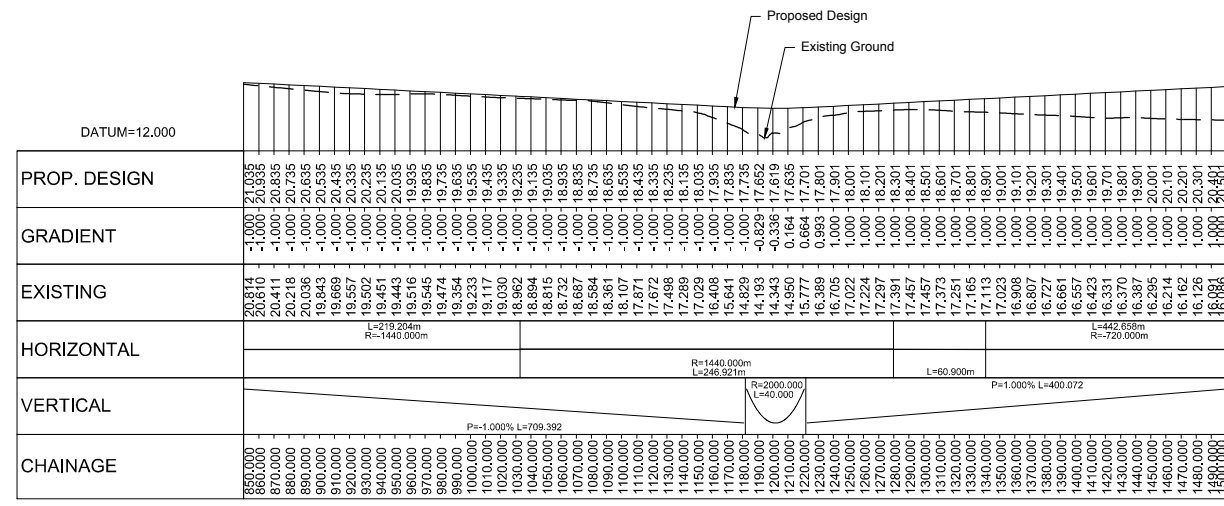
This drawing is not to be used in whole or part other than for the intended purpose and project as defined on this drawing. Refer to the contract for full terms and conditions.



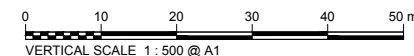
NOTES:  
 1. All dimensions are in metres unless stated otherwise.

This OS Mastermap was obtained in March 2014 and is for illustration purposes only.

Reproduced by permission of Ordnance Survey on behalf of HMSO.  
 © Crown copyright and database right 2014. All rights reserved.  
 Ordnance Survey Licence number 100046668.



LONGITUDINAL SECTION (CHAINAGE 850m TO 1500m)



A	08/09/14	DMRB Stage 2 Report	DAD	CMM	GAH	EHB
Rev	Rev. Date	Purpose of revision	Drawn	Checked	Rev'd	Appr'd

**JACOBS**  
 85 Bothwell St, Glasgow, G2 7HX  
 Tel: +44(0)141 243 8000 Fax: +44(0)141 226 3109  
 www.jacobs.com



Drawing title  
**DMRB STAGE 2  
 INVERNESS TO GOLLANFIELD  
 OPTION 1B PLAN & PROFILE  
 CH 850 TO CH 1500**

Drawing status  
**PRELIMINARY**

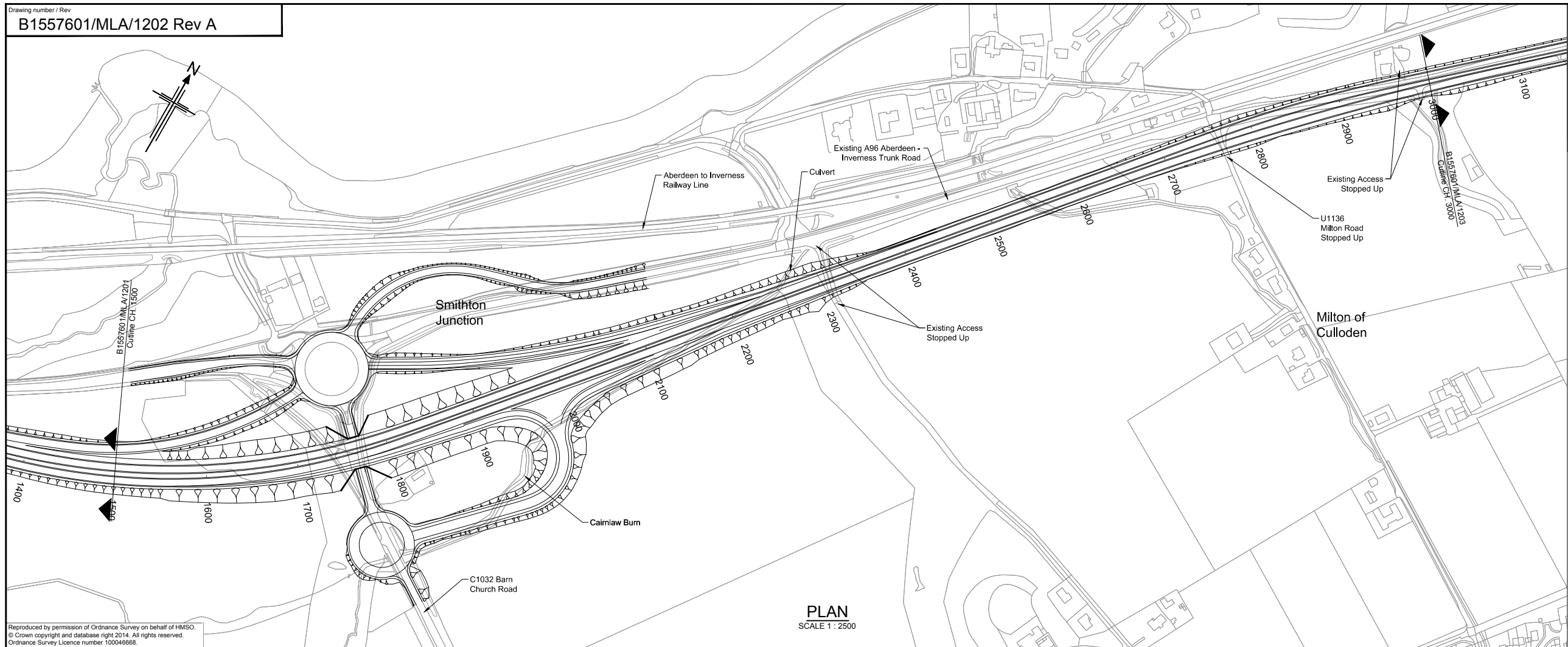
Scale  
 1:2,500 @ A1 | DO NOT SCALE

Jacobs No. B1557601  
 Client no.

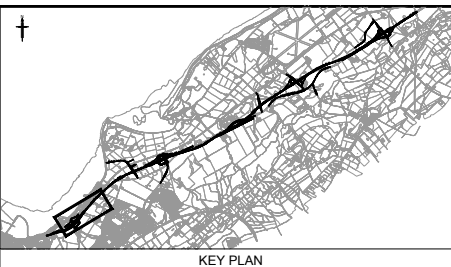
Drawing number  
**B1557601/MLA/1201** | Rev  
**A**

This drawing is not to be used in whole or part other than for the intended purpose and project as defined on this drawing. Refer to the contract for full terms and conditions.



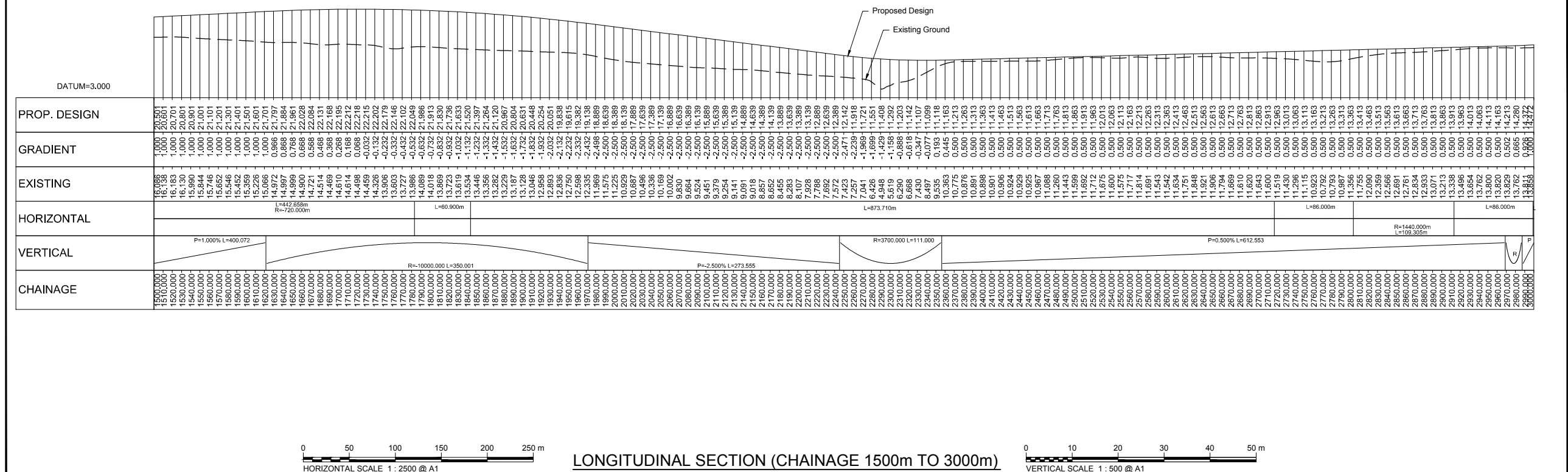


Reproduced by permission of Ordnance Survey on behalf of HMSO.  
 © Crown copyright and database right 2014. All rights reserved.  
 Ordnance Survey Licence number 100046668.



- NOTES:
- All dimensions are in metres unless stated otherwise.
  - For Smithton Junction refer to drawing no. B1557601/MLA/1211.

This OS Mastermap was obtained in March 2014 and is for illustration purposes only.



A	08/09/14	DMRB Stage 2 Report	DAD	CMM	GAH	EHB
Rev	Rev. Date	Purpose of revision	Drawn	Checked	Rev'd	Apprv'd

**JACOBS**  
 85 Bothwell St, Glasgow, G2 7HX  
 Tel: +44(0)141 243 8000 Fax: +44(0)141 226 3109  
 www.jacobs.com

Client

TRANSPORT SCOTLAND  
 COMHAIL ALBA

Project

**A96 DUALLING**  
 INVERNESS TO NAIRN  
 (incl. Main Bypass)  
 DMRB STAGE 2

Drawing title  
**DMRB STAGE 2  
 INVERNESS TO GOLLANFIELD  
 OPTION 1B PLAN & PROFILE  
 CH 1500 TO CH 3000**

Drawing status  
**PRELIMINARY**

Scale  
 1:2,500 @ A1 DO NOT SCALE

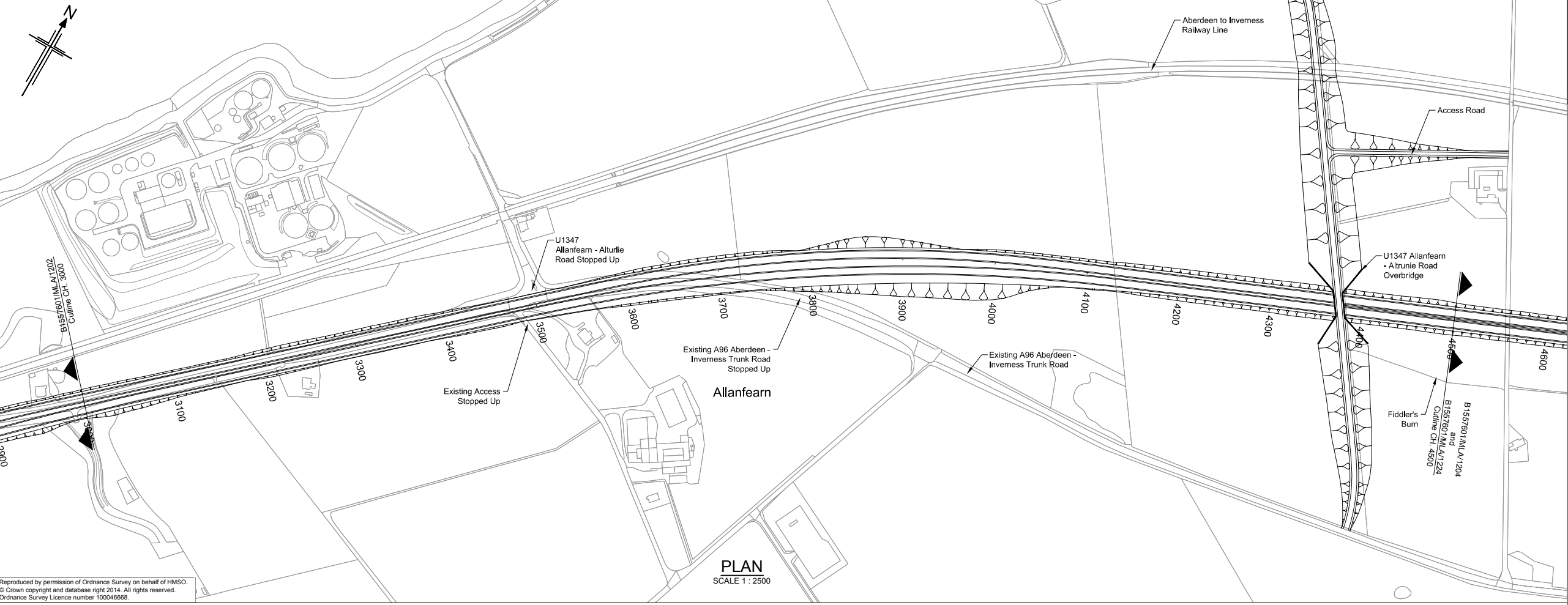
Jacobs No.  
 B1557601

Client no.

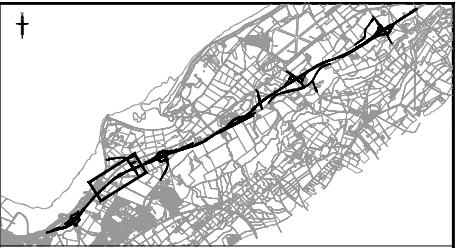
Drawing number  
**B1557601/MLA/1202**

Rev  
**A**

This drawing is not to be used in whole or part other than for the intended purpose and project as defined on this drawing. Refer to the contract for full terms and conditions.

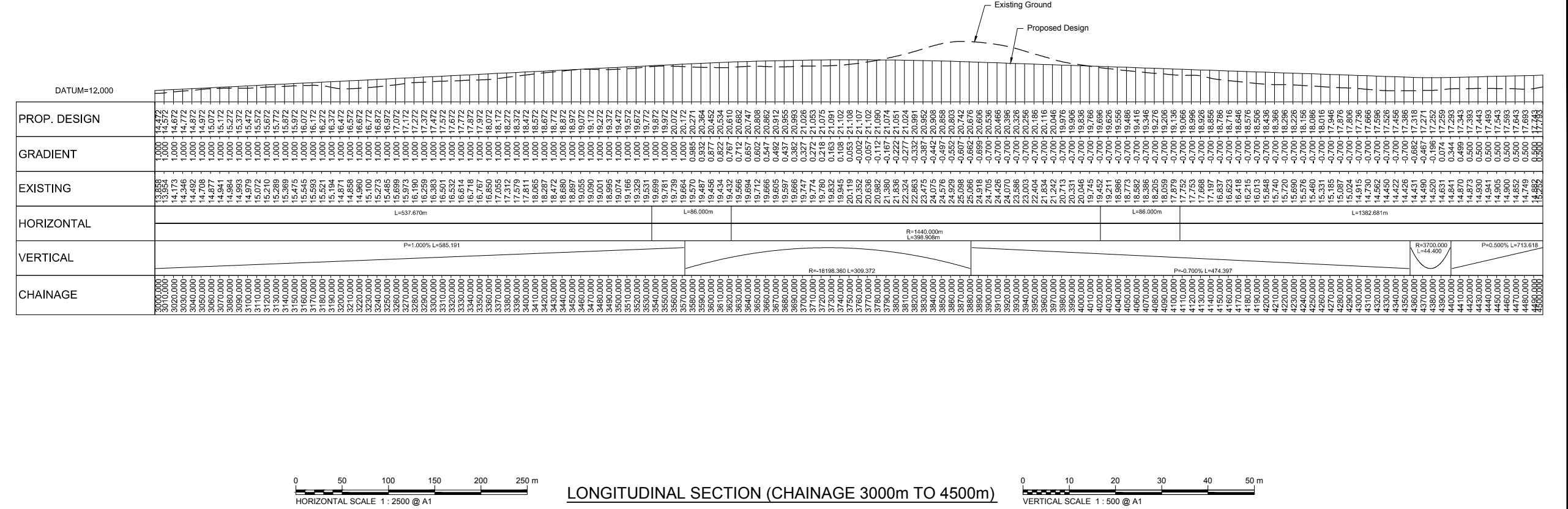


Reproduced by permission of Ordnance Survey on behalf of HMSO.  
 © Crown copyright and database right 2014. All rights reserved.  
 Ordnance Survey Licence number 100046668.



NOTES:  
 1. All dimensions are in metres unless stated otherwise.

This OS Mastermap was obtained in March 2014 and is for illustration purposes only.



Rev	Rev. Date	Purpose of revision	Drawn	Checked	Rev'd	Apprv'd
A	08/09/14	DMRB Stage 2 Report	DAD	CMM	GAH	EHB

**JACOBS**  
 85 Bothwell St, Glasgow, G2 7HX  
 Tel: +44(0)141 243 8000 Fax: +44(0)141 226 3109  
 www.jacobs.com

Client  
  
**TRANSPORT SCOTLAND**  
 COMHAIL ALBA

Project  
  
**A96 DUALLING**  
 INVERNESS TO NAIRN  
 (incl. Nairn Bypass)

Drawing title  
**DMRB STAGE 2**  
**INVERNESS TO GOLLANFIELD**  
**OPTION 1B PLAN & PROFILE**  
**CH 3000 TO CH 4500**

Drawing status  
**PRELIMINARY**

Scale  
 1:2,500 @ A1      DO NOT SCALE

Jacobs No.  
 B1557601

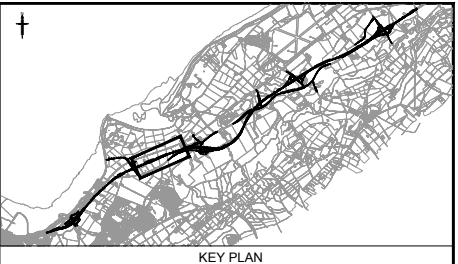
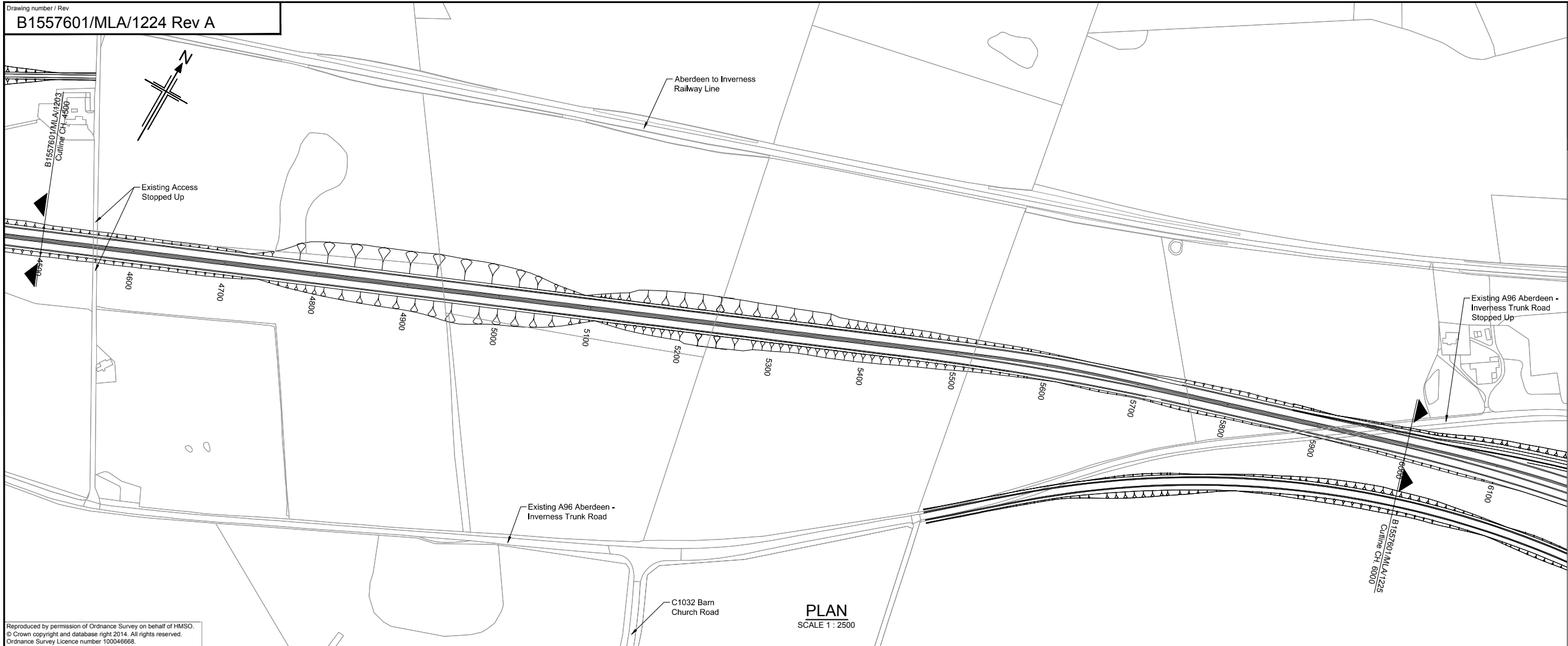
Client no.

Drawing number  
**B1557601/MLA/1203**

Rev  
**A**

This drawing is not to be used in whole or part other than for the intended purpose and project as defined on this drawing. Refer to the contract for full terms and conditions.

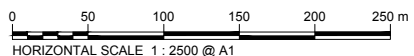
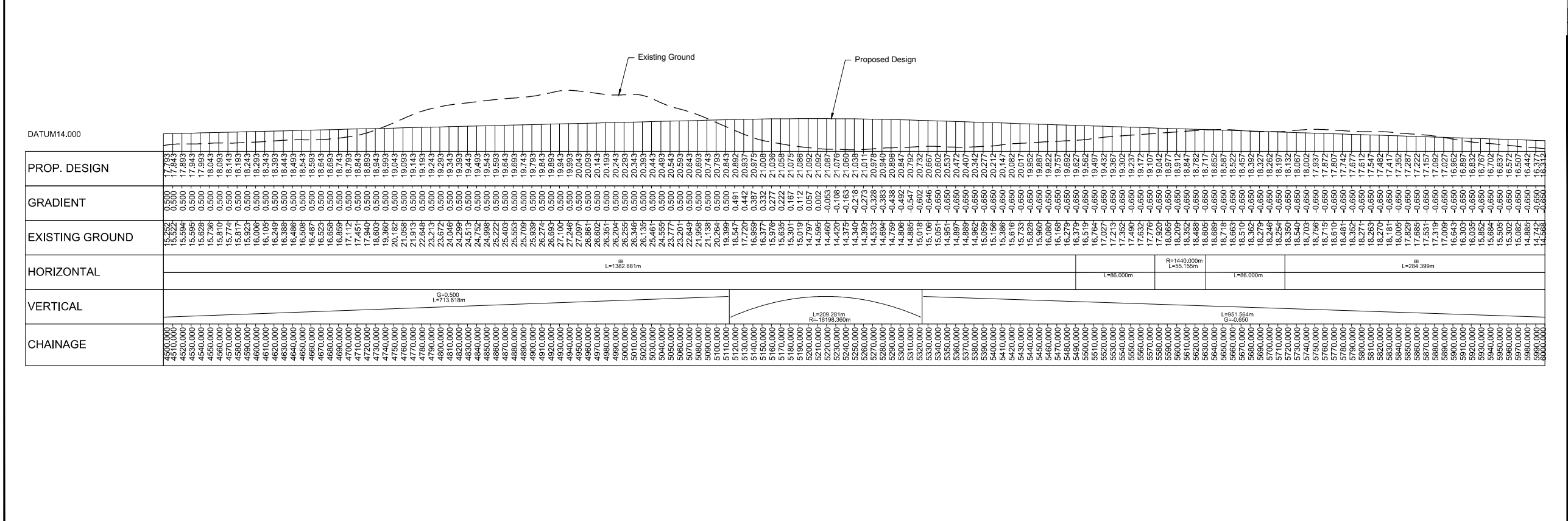




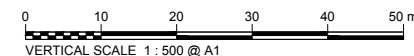
NOTES:  
1. All dimensions are in metres unless stated otherwise.

Reproduced by permission of Ordnance Survey on behalf of HMSO.  
© Crown copyright and database right 2014. All rights reserved.  
Ordnance Survey Licence number 100046668.

This OS Mastermap was obtained in March 2014 and is for illustration purposes only.



LONGITUDINAL SECTION (CHAINAGE 4500m TO 6000m)



A	08/09/14	DMRB Stage 2 Report	DAD	CMM	GAH	EHB
Rev	Rev. Date	Purpose of revision	Drawn	Checked	Rev'd	Appr'd

**JACOBS**  
85 Bothwell St, Glasgow, G2 7HX  
Tel: +44(0)141 243 8000 Fax: +44(0)141 226 3109  
www.jacobs.com

Client

TRANSPORT SCOTLAND  
CÒRRAIDH ALBA

Project

A96  
DUALLING  
INVERNESS TO NAIRN  
(incl. Blairwynn)

Drawing title  
**DMRB STAGE 2  
INVERNESS TO GOLLANFIELD  
OPTION 1B (MV) PLAN & PROFILE  
CH 4500 TO CH 6000**

Drawing status  
**PRELIMINARY**

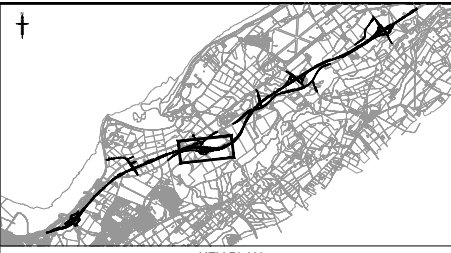
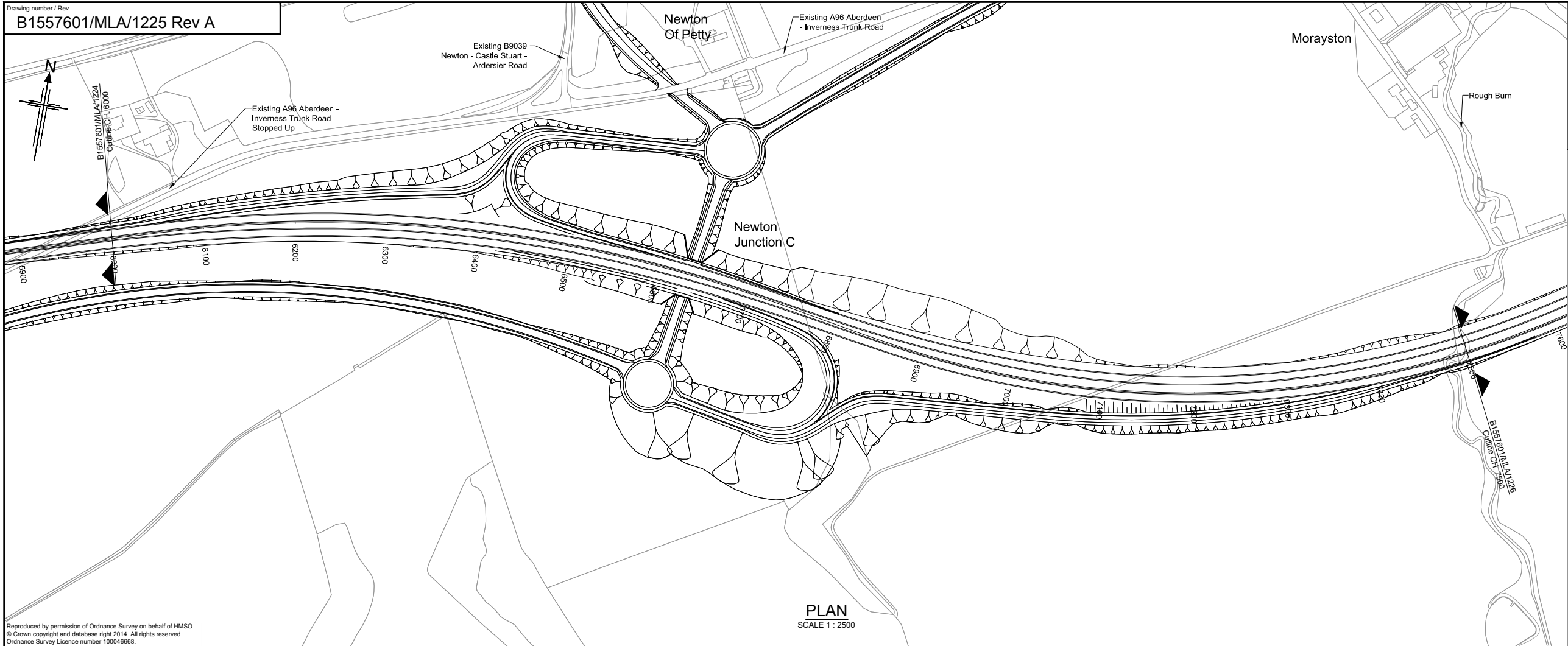
Scale  
1:2,500 @ A1 | DO NOT SCALE

Jacobs No. B1557601

Drawing number  
**B1557601/MLA/1224**

Rev  
**A**

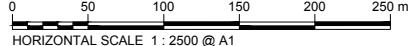
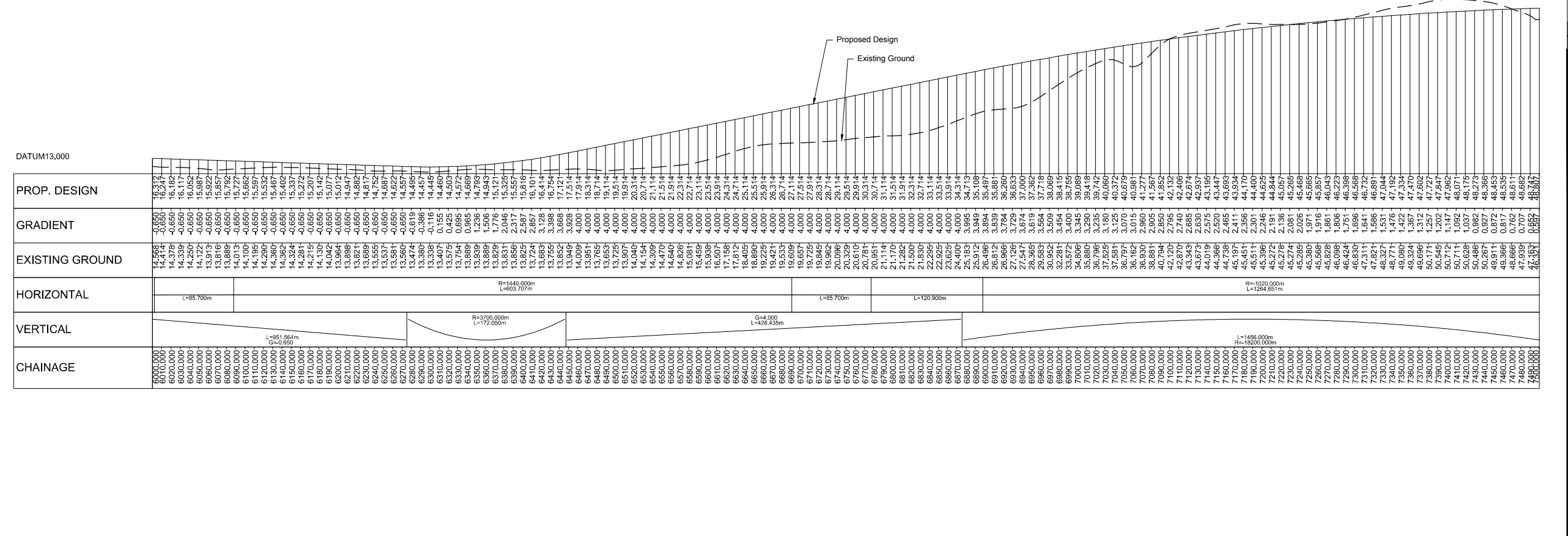
This drawing is not to be used in whole or part other than for the intended purpose and project as defined on this drawing. Refer to the contract for full terms and conditions.



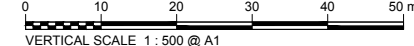
- NOTES:**
- All dimensions are in metres unless stated otherwise.
  - For Newton Junction see drawing no. B1557601/MLA/1228.

Reproduced by permission of Ordnance Survey on behalf of HMSO.  
 © Crown copyright and database right 2014. All rights reserved.  
 Ordnance Survey Licence number 100046668.

This OS Mastermap was obtained in March 2014 and is for illustration purposes only.



LONGITUDINAL SECTION (CHAINAGE 6000m TO 7500m)



A	08/09/14	DMRB Stage 2 Report	DAD	CMM	GAH	EHB
Rev	Rev. Date	Purpose of revision	Drawn	Checked	Rev'd	Apprv'd

**JACOBS**  
 85 Bothwell St, Glasgow, G2 7HX  
 Tel: +44(0)141 243 8000 Fax: +44(0)141 226 3109  
 www.jacobs.com

Client

COMH-DHAL ALBA

Project

(incl. Malm. bypass)

Drawing title  
**DMRB STAGE 2  
 INVERNESS TO GOLLANFIELD  
 OPTION 1B (MV) PLAN & PROFILE  
 CH 6000 TO CH 7500**

Drawing status  
**PRELIMINARY**

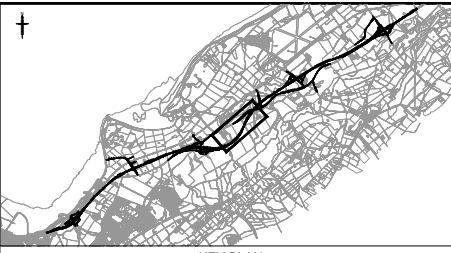
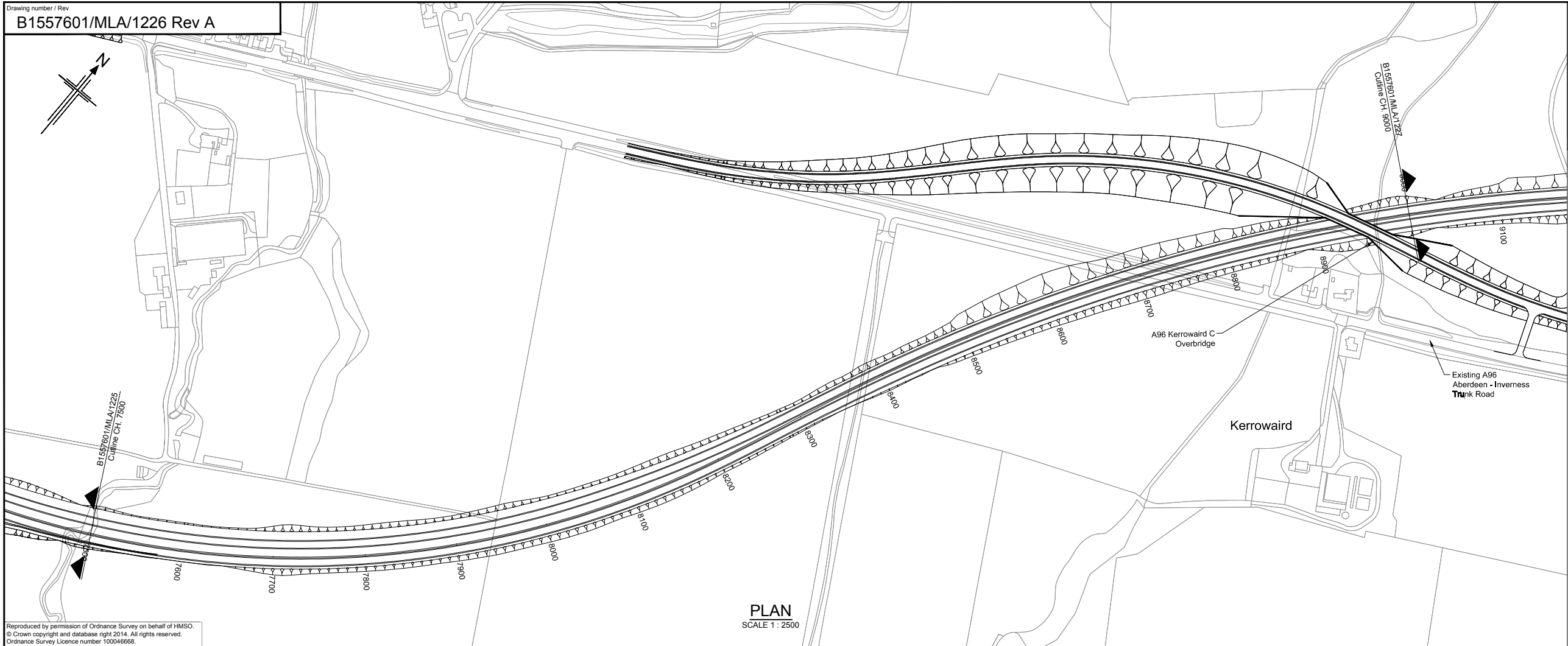
Scale  
 1:2,500 @ A1      DO NOT SCALE

Jacobs No. B1557601  
 Client no.

Drawing number  
**B1557601/MLA/1225**      Rev  
**A**

This drawing is not to be used in whole or part other than for the intended purpose and project as defined on this drawing. Refer to the contract for full terms and conditions.

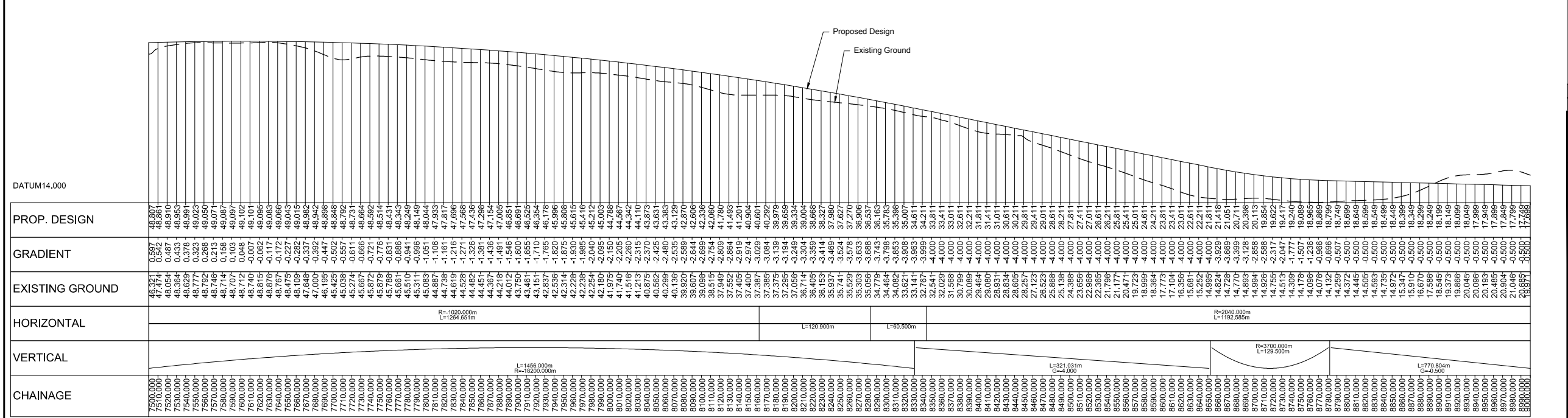




NOTES:  
 1. All dimensions are in metres unless stated otherwise.

Reproduced by permission of Ordnance Survey on behalf of HMSO.  
 © Crown copyright and database right 2014. All rights reserved.  
 Ordnance Survey Licence number 100046668.

This OS Mastermap was obtained in March 2014 and is for illustration purposes only.



A	08/09/14	DMRB Stage 2 Report	DAD	CMM	GAH	EHB
Rev	Rev. Date	Purpose of revision	Drawn	Checked	Rev'd	Appr'd

**JACOBS**  
 85 Bothwell St, Glasgow, G2 7HX  
 Tel: +44(0)141 243 8000 Fax: +44(0)141 226 3109  
 www.jacobs.com

Client

TRANSPORT SCOTLAND  
 COMHAIL ALBA

Project

**A96**  
 DUALLING  
 INVERNESS TO NAIRN  
 (incl. A141m-09999)

Drawing title  
**DMRB STAGE 2  
 INVERNESS TO GOLLANFIELD  
 OPTION 1B (MV) PLAN & PROFILE  
 CH 7500 TO CH 9000**

Drawing status  
**PRELIMINARY**

Scale  
 1:2,500 @ A1 | DO NOT SCALE

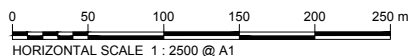
Jacobs No.  
 B1557601

Client no.

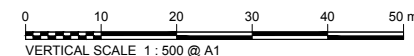
Drawing number  
**B1557601/MLA/1226**

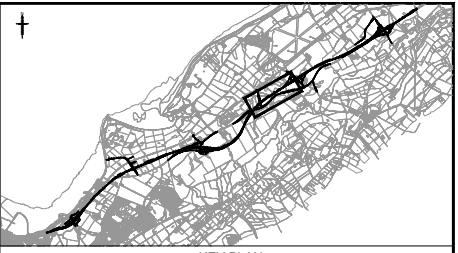
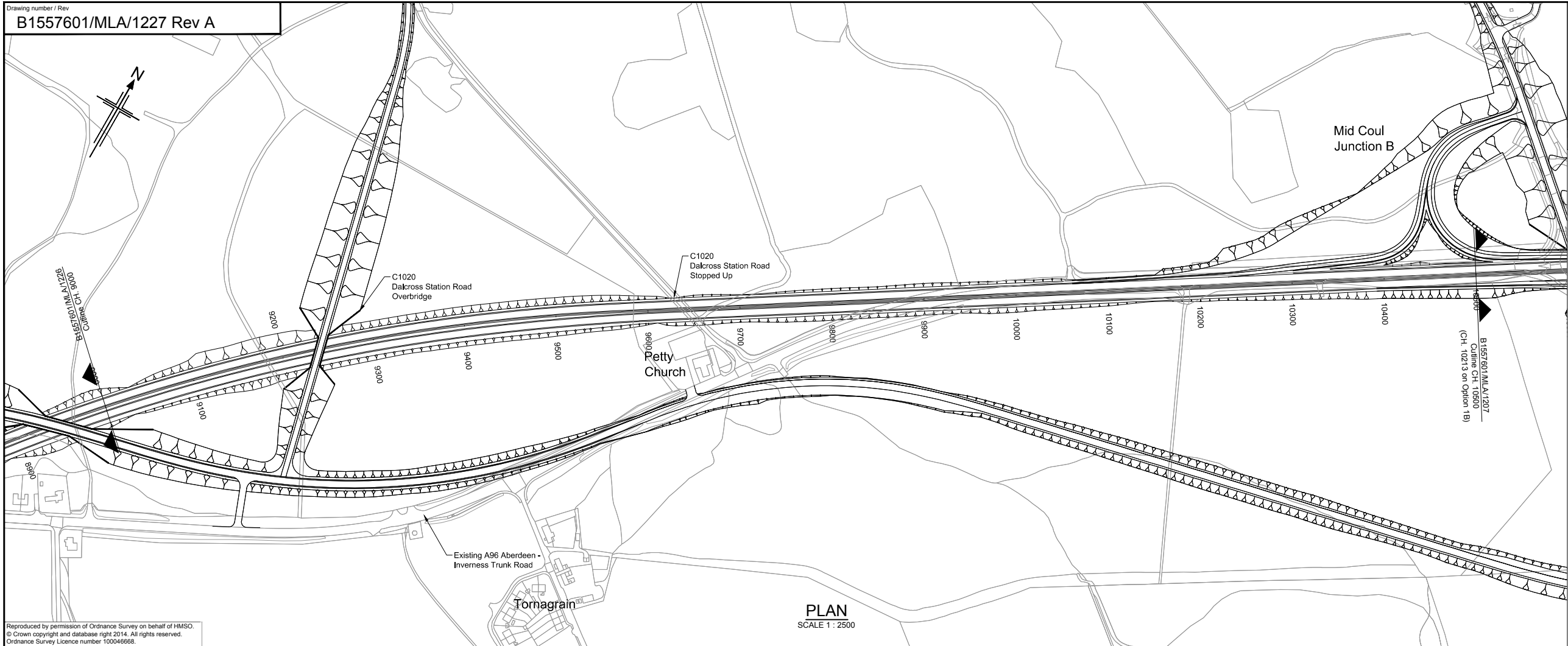
Rev  
**A**

This drawing is not to be used in whole or part other than for the intended purpose and project as defined on this drawing. Refer to the contract for full terms and conditions.



LONGITUDINAL SECTION (CHAINAGE 7500m TO 9000m)



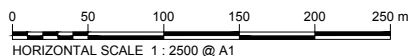


- NOTES:**
- All dimensions are in metres unless stated otherwise.
  - For Mid-Coul Junction refer to drawing no. B155760/MLA/1213.

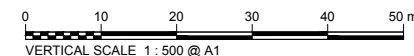
Reproduced by permission of Ordnance Survey on behalf of HMSO.  
 © Crown copyright and database right 2014. All rights reserved.  
 Ordnance Survey Licence number 100046668.

This OS Mastermap was obtained in March 2014 and is for illustration purposes only.

PROP. DESIGN	GRADIENT	EXISTING GROUND	HORIZONTAL	VERTICAL	CHAINAGE
18.971	-0.500	18.971			8900.000
18.125	-0.500	18.125			9000.000
17.599	-0.500	17.599			9100.000
17.549	-0.500	17.549			9200.000
17.449	-0.500	17.449			9300.000
17.389	-0.500	17.389			9400.000
17.309	-0.500	17.309			9500.000
17.209	-0.500	17.209			9600.000
17.149	-0.500	17.149			9700.000
17.089	-0.500	17.089			9800.000
17.049	-0.500	17.049			9900.000
16.949	-0.500	16.949			10000.000
16.849	-0.500	16.849			10100.000
16.799	-0.500	16.799			10200.000
16.749	-0.500	16.749			10300.000
16.649	-0.500	16.649			10400.000
16.549	-0.500	16.549			10500.000
16.449	-0.500	16.449			10600.000
16.349	-0.500	16.349			10700.000
16.249	-0.500	16.249			10800.000
16.149	-0.500	16.149			10900.000
16.049	-0.500	16.049			11000.000
15.949	-0.500	15.949			11100.000
15.849	-0.500	15.849			11200.000
15.749	-0.500	15.749			11300.000
15.649	-0.500	15.649			11400.000
15.549	-0.500	15.549			11500.000
15.449	-0.500	15.449			11600.000
15.349	-0.500	15.349			11700.000
15.249	-0.500	15.249			11800.000
15.149	-0.500	15.149			11900.000
15.049	-0.500	15.049			12000.000
14.949	-0.500	14.949			12100.000
14.849	-0.500	14.849			12200.000
14.749	-0.500	14.749			12300.000
14.649	-0.500	14.649			12400.000
14.549	-0.500	14.549			12500.000
14.449	-0.500	14.449			12600.000
14.349	-0.500	14.349			12700.000
14.249	-0.500	14.249			12800.000
14.149	-0.500	14.149			12900.000
14.049	-0.500	14.049			13000.000
13.949	-0.500	13.949			13100.000
13.849	-0.500	13.849			13200.000
13.749	-0.500	13.749			13300.000
13.649	-0.500	13.649			13400.000
13.549	-0.500	13.549			13500.000
13.449	-0.500	13.449			13600.000
13.349	-0.500	13.349			13700.000
13.249	-0.500	13.249			13800.000
13.149	-0.500	13.149			13900.000
13.049	-0.500	13.049			14000.000
12.949	-0.500	12.949			14100.000
12.849	-0.500	12.849			14200.000
12.749	-0.500	12.749			14300.000
12.649	-0.500	12.649			14400.000
12.549	-0.500	12.549			14500.000
12.449	-0.500	12.449			14600.000
12.349	-0.500	12.349			14700.000
12.249	-0.500	12.249			14800.000
12.149	-0.500	12.149			14900.000
12.049	-0.500	12.049			15000.000
11.949	-0.500	11.949			15100.000
11.849	-0.500	11.849			15200.000
11.749	-0.500	11.749			15300.000
11.649	-0.500	11.649			15400.000
11.549	-0.500	11.549			15500.000
11.449	-0.500	11.449			15600.000
11.349	-0.500	11.349			15700.000
11.249	-0.500	11.249			15800.000
11.149	-0.500	11.149			15900.000
11.049	-0.500	11.049			16000.000
10.949	-0.500	10.949			16100.000
10.849	-0.500	10.849			16200.000
10.749	-0.500	10.749			16300.000
10.649	-0.500	10.649			16400.000
10.549	-0.500	10.549			16500.000
10.449	-0.500	10.449			16600.000
10.349	-0.500	10.349			16700.000
10.249	-0.500	10.249			16800.000
10.149	-0.500	10.149			16900.000
10.049	-0.500	10.049			17000.000
9.949	-0.500	9.949			17100.000
9.849	-0.500	9.849			17200.000
9.749	-0.500	9.749			17300.000
9.649	-0.500	9.649			17400.000
9.549	-0.500	9.549			17500.000
9.449	-0.500	9.449			17600.000
9.349	-0.500	9.349			17700.000
9.249	-0.500	9.249			17800.000
9.149	-0.500	9.149			17900.000
9.049	-0.500	9.049			18000.000



**LONGITUDINAL SECTION (CHAINAGE 9000m TO 10500m)**



A	08/09/14	DMRB Stage 2 Report	DAD	CMM	GAH	EHB
Rev	Rev. Date	Purpose of revision	Drawn	Checked	Rev'd	Apprv'd



**DMRB STAGE 2  
 INVERNESS TO GOLLANFIELD  
 OPTION 1B (MV) PLAN & PROFILE  
 CH 9000 TO CH 10500**

Drawing status: **PRELIMINARY**

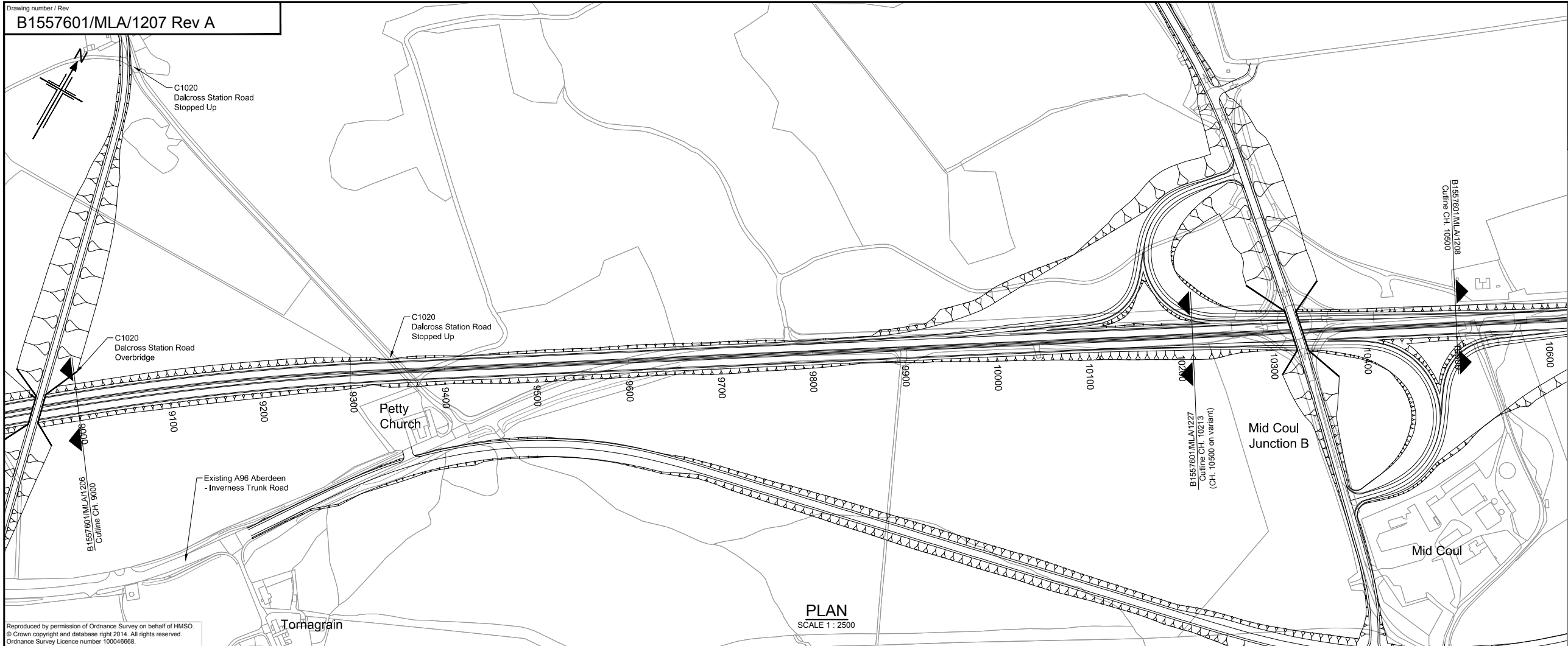
Scale: 1:2,500 @ A1 | **DO NOT SCALE**

Jacobs No. B1557601

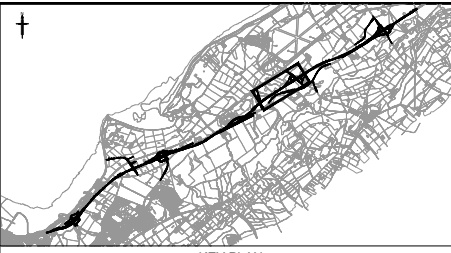
Drawing number: **B1557601/MLA/1227** | Rev **A**

This drawing is not to be used in whole or part other than for the intended purpose and project as defined on this drawing. Refer to the contract for full terms and conditions.



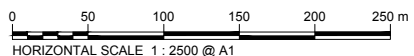
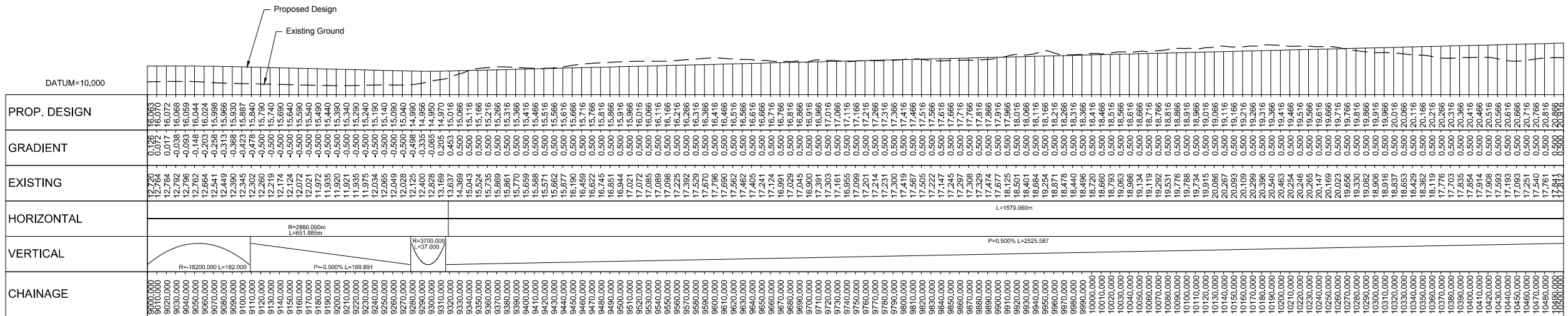


Reproduced by permission of Ordnance Survey on behalf of HMSO.  
 © Crown copyright and database right 2014. All rights reserved.  
 Ordnance Survey Licence number 100046668.

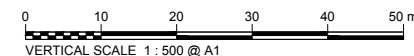


- NOTES:**
- All dimensions are in metres unless stated otherwise.
  - For Mid Coul Junction refer to drawing no. B1557601/MLA/1213.

This OS Mastermap was obtained in March 2014 and is for illustration purposes only.



**LONGITUDINAL SECTION (CHAINAGE 9000m TO 10500m)**



Rev	Rev. Date	Purpose of revision	Drawn	Checked	Rev'd	Apprv'd
A	08/09/14	DMRB Stage 2 Report	DAD	CMM	GAH	EHB

**JACOBS**  
 85 Bothwell St, Glasgow, G2 7HX  
 Tel: +44(0)141 243 8000 Fax: +44(0)141 226 3109  
 www.jacobs.com

Client

TRANSPORT SCOTLAND  
 COMHDAHL ALBA

Project

A96  
 DUALLING  
 INVERNESS TO NAIRN  
 (incl. Nairn Bypass)

Drawing title  
**DMRB STAGE 2  
 INVERNESS TO GOLLANFIELD  
 OPTION 1B PLAN & PROFILE  
 CH 9000 TO CH 10500**

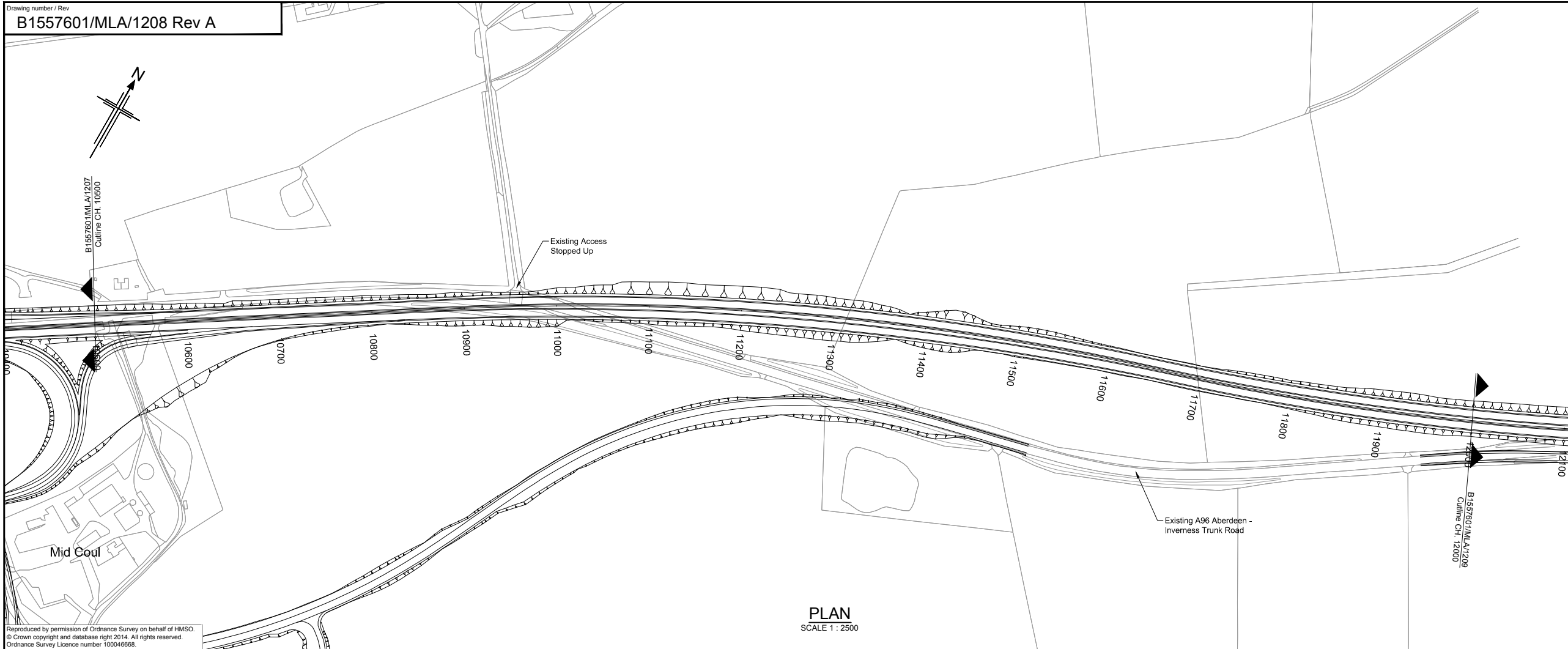
Drawing status  
**PRELIMINARY**

Scale  
 1:2,500 @ A1      DO NOT SCALE

Jacobs No. B1557601  
 Client no.

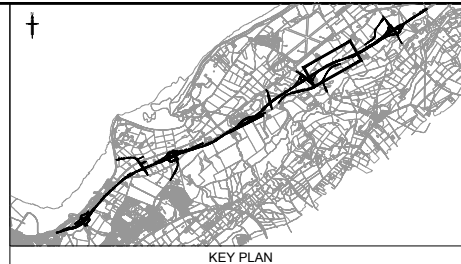
Drawing number  
**B1557601/MLA/1207**      Rev **A**

This drawing is not to be used in whole or part other than for the intended purpose and project as defined on this drawing. Refer to the contract for full terms and conditions.



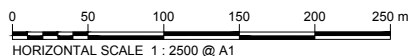
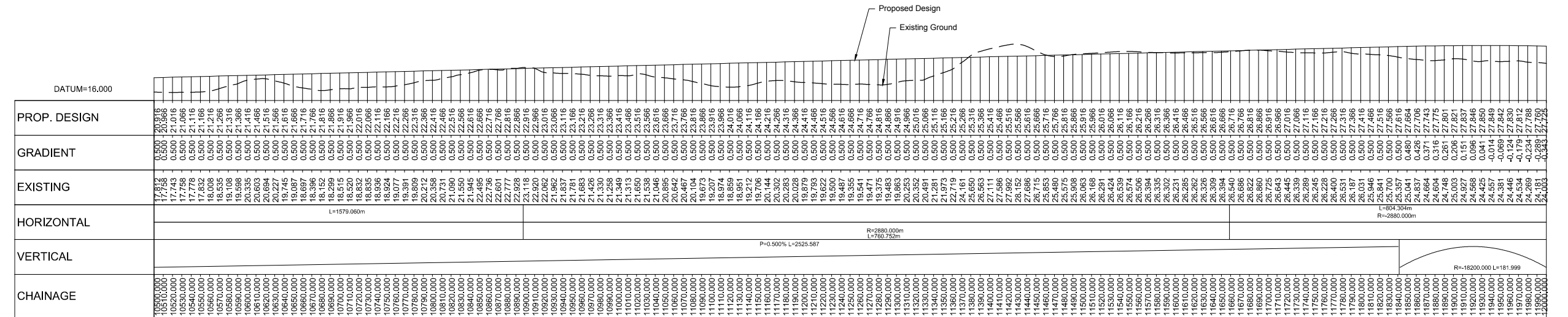
**PLAN**  
 SCALE 1 : 2500

Reproduced by permission of Ordnance Survey on behalf of HMSO.  
 © Crown copyright and database right 2014. All rights reserved.  
 Ordnance Survey Licence number 100046668.

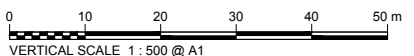


**NOTES:**  
 1. All dimensions are in metres unless stated otherwise.

This OS Mastermap was obtained in March 2014 and is for illustration purposes only.



**LONGITUDINAL SECTION (CHAINAGE 10500m TO 12000m)**



A	08/09/14	DMRB Stage 2 Report	DAD	CMM	GAH	EBH
Rev	Rev. Date	Purpose of revision	Drawn	Checked	Rev'd	Apprv'd

**JACOBS**  
 85 Bothwell St, Glasgow, G2 7HX  
 Tel: +44(0)141 243 8000 Fax: +44(0)141 226 3109  
 www.jacobs.com

Client

CONHADAL ALBA

Project

DMRB STAGE 2

Drawing title  
**DMRB STAGE 2  
 INVERNESS TO GOLLANFIELD  
 OPTION 1B PLAN & PROFILE  
 CH 10500 TO CH 12000**

Drawing status  
**PRELIMINARY**

Scale  
 1:2,500 @ A1      DO NOT SCALE

Jacobs No.  
 B1557601

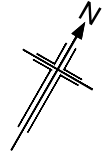
Client no.

Drawing number  
**B1557601/MLA/1208**

Rev  
**A**

This drawing is not to be used in whole or part other than for the intended purpose and project as defined on this drawing. Refer to the contract for full terms and conditions.



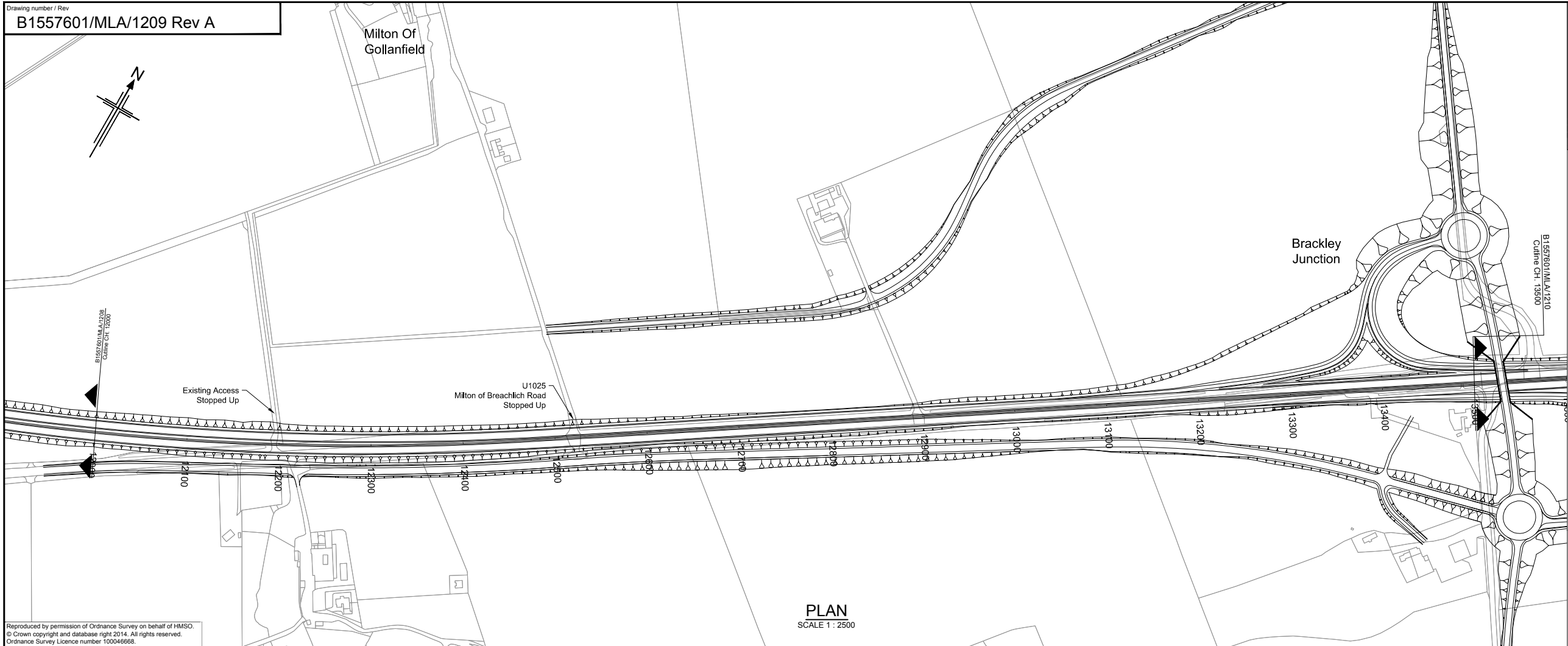


Milton Of Gollanfield

Brackley Junction



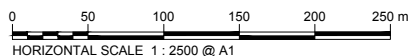
NOTES:  
 1. All dimensions are in metres unless stated otherwise.  
 2. For Brackley Junction refer to drawing no. B1577601/MLA/1214.



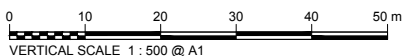
Reproduced by permission of Ordnance Survey on behalf of HMSO.  
 © Crown copyright and database right 2014. All rights reserved.  
 Ordnance Survey Licence number 100046668.

This OS Mastermap was obtained in March 2014 and is for illustration purposes only.

PROF. DESIGN	GRADIENT	EXISTING	HORIZONTAL	VERTICAL	CHAINAGE
23.353	-0.388	23.003	L=180.30m R=2880.00m	P=0.500% L=161.949	12000.000
23.353	-0.388	23.003			12010.000
24.163	-0.463	24.163	L=1226.50m	P=0.500% L=1812.429	12020.000
24.090	-0.497	24.090			12030.000
23.820	-0.500	23.820			12040.000
23.959	-0.500	23.959			12050.000
24.115	-0.500	24.115			12060.000
23.412	-0.500	23.412			12070.000
22.955	-0.500	22.955			12080.000
22.787	-0.500	22.787			12090.000
23.244	-0.500	23.244			12100.000
23.106	-0.500	23.106			12110.000
22.612	-0.500	22.612			12120.000
23.074	-0.500	23.074			12130.000
23.096	-0.500	23.096			12140.000
23.010	-0.472	23.010			12150.000
22.850	-0.242	22.850			12160.000
22.958	0.029	22.958			12170.000
23.305	0.299	23.305			12180.000
23.523	0.482	23.523			12190.000
23.660	0.500	23.660			12200.000
23.706	0.500	23.706			12210.000
23.754	0.500	23.754			12220.000
23.827	0.500	23.827			12230.000
23.919	0.500	23.919			12240.000
24.005	0.500	24.005			12250.000
24.211	0.500	24.211			12260.000
24.690	0.500	24.690			12270.000
24.791	0.500	24.791			12280.000
24.924	0.500	24.924			12290.000
25.079	0.500	25.079			12300.000
25.152	0.500	25.152			12310.000
25.279	0.500	25.279			12320.000
25.426	0.500	25.426			12330.000
25.591	0.500	25.591			12340.000
25.633	0.500	25.633			12350.000
26.074	0.500	26.074			12360.000
26.289	0.500	26.289			12370.000
26.609	0.500	26.609			12380.000
26.705	0.500	26.705			12390.000
26.903	0.500	26.903			12400.000
27.265	0.500	27.265			12410.000
27.375	0.500	27.375			12420.000
27.488	0.500	27.488			12430.000
27.634	0.500	27.634			12440.000
27.738	0.500	27.738			12450.000
27.851	0.500	27.851			12460.000
27.896	0.500	27.896			12470.000
28.091	0.500	28.091			12480.000
28.254	0.500	28.254			12490.000
28.360	0.500	28.360			12500.000
28.469	0.500	28.469			12510.000
28.570	0.500	28.570			12520.000
28.692	0.500	28.692			12530.000
28.808	0.500	28.808			12540.000
28.986	0.500	28.986			12550.000
29.156	0.500	29.156			12560.000
29.214	0.500	29.214			12570.000
29.211	0.500	29.211			12580.000
29.226	0.500	29.226			12590.000
29.248	0.500	29.248			12600.000
29.255	0.500	29.255			12610.000
29.301	0.500	29.301			12620.000
29.326	0.500	29.326			12630.000
29.345	0.500	29.345			12640.000
29.362	0.500	29.362			12650.000
29.383	0.500	29.383			12660.000
30.038	0.500	30.038			12670.000
30.155	0.500	30.155			12680.000
30.108	0.500	30.108			12690.000
30.081	0.500	30.081			12700.000
30.131	0.500	30.131			12710.000
30.140	0.500	30.140			12720.000
30.301	0.500	30.301			12730.000
30.293	0.500	30.293			12740.000
30.335	0.500	30.335			12750.000
30.384	0.500	30.384			12760.000
30.496	0.500	30.496			12770.000
30.604	0.500	30.604			12780.000
30.630	0.500	30.630			12790.000
30.649	0.500	30.649			12800.000
30.651	0.500	30.651			12810.000
30.679	0.500	30.679			12820.000
30.802	0.500	30.802			12830.000
31.060	0.500	31.060			12840.000
31.070	0.500	31.070			12850.000
31.150	0.500	31.150			12860.000
31.233	0.500	31.233			12870.000
31.329	0.500	31.329			12880.000
31.414	0.500	31.414			12890.000
31.560	0.500	31.560			12900.000
31.656	0.500	31.656			12910.000
31.637	0.500	31.637			12920.000
31.653	0.500	31.653			12930.000
31.704	0.500	31.704			12940.000
31.756	0.500	31.756			12950.000
31.954	0.500	31.954			12960.000
31.995	0.500	31.995			12970.000
32.081	0.500	32.081			12980.000
32.199	0.500	32.199			12990.000
32.279	0.500	32.279			13000.000
32.309	0.500	32.309			13010.000
32.362	0.500	32.362			13020.000
32.519	0.500	32.519			13030.000
32.627	0.500	32.627			13040.000
32.655	0.500	32.655			13050.000
32.729	0.500	32.729			13060.000
32.882	0.500	32.882			13070.000
33.031	0.500	33.031			13080.000
33.089	0.500	33.089			13090.000
33.133	0.500	33.133			13100.000
33.339	0.500	33.339			13110.000
33.347	0.500	33.347			13120.000



LONGITUDINAL SECTION (CHAINAGE 12000m TO 13500m)



A	08/09/14	DMRB Stage 2 Report	DAD	CMM	GAH	EHB
Rev	Rev. Date	Purpose of revision	Drawn	Checked	Rev'd	Apprv'd

**JACOBS**  
 85 Bothwell St, Glasgow, G2 7HX  
 Tel: +44(0)141 243 8000 Fax: +44(0)141 226 3109  
 www.jacobs.com

Client

COMHAIL ALBA

Project

Drawing title  
**DMRB STAGE 2  
 INVERNESS TO GOLLANFIELD  
 OPTION 1B PLAN & PROFILE  
 CH 12000 TO CH 13500**

Drawing status  
**PRELIMINARY**

Scale  
 1:2,500 @ A1 | DO NOT SCALE

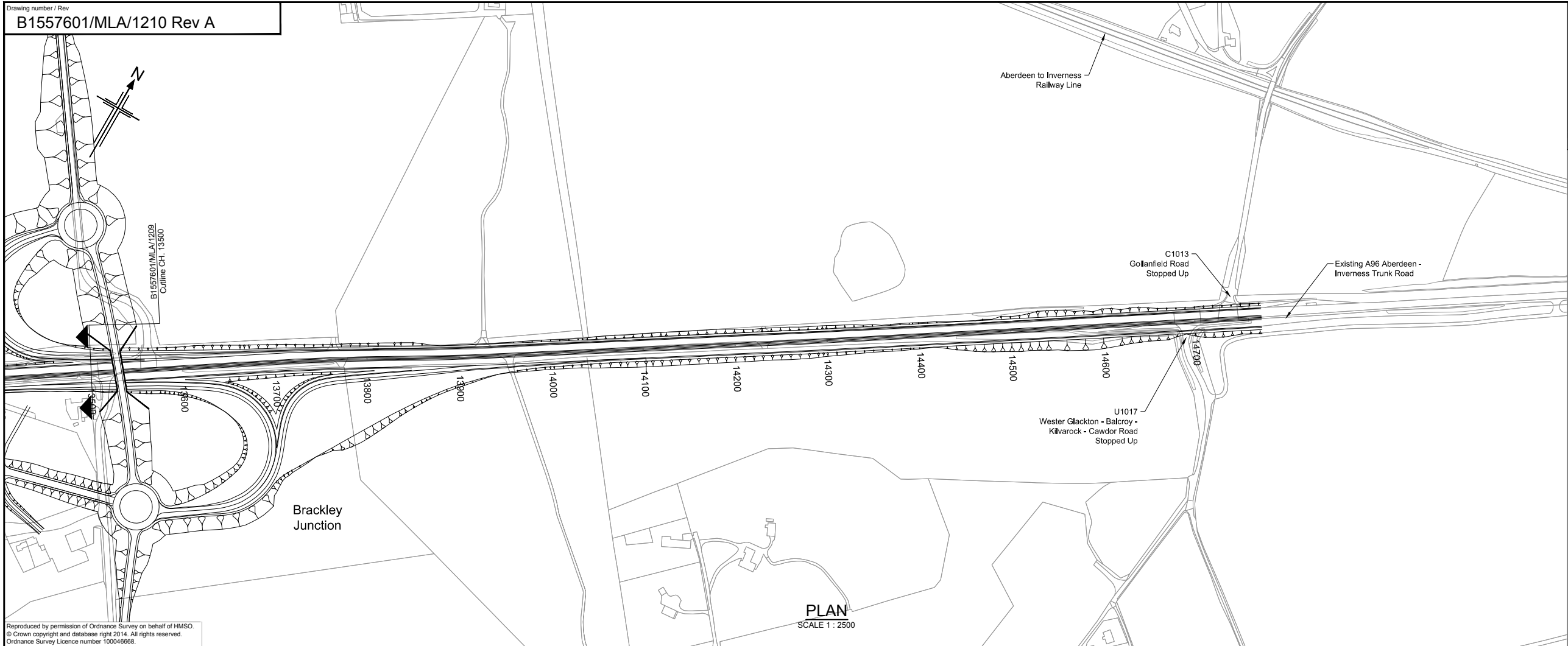
Jacobs No.  
 B1557601

Client no.

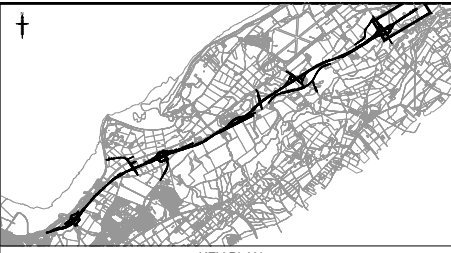
Drawing number  
**B1557601/MLA/1209**

Rev  
**A**

This drawing is not to be used in whole or part other than for the intended purpose and project as defined on this drawing. Refer to the contract for full terms and conditions.



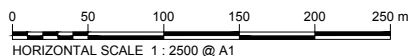
Reproduced by permission of Ordnance Survey on behalf of HMSO.  
 © Crown copyright and database right 2014. All rights reserved.  
 Ordnance Survey Licence number 100046668.



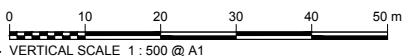
NOTES:  
 1. All dimensions are in metres unless stated otherwise.

This OS Mastermap was obtained in March 2014 and is for illustration purposes only.

Chainage	Proposed Design	Existing Ground
13500.000	33.281	33.281
13510.000	0.500	33.251
13520.000	0.500	33.301
13530.000	0.500	33.351
13540.000	0.500	33.401
13550.000	0.500	33.451
13560.000	0.500	33.501
13570.000	0.500	33.551
13580.000	0.500	33.601
13590.000	0.500	33.651
13600.000	0.500	33.701
13610.000	0.500	33.751
13620.000	0.500	33.801
13630.000	0.500	33.851
13640.000	0.500	33.901
13650.000	0.500	33.951
13660.000	0.500	34.001
13670.000	0.500	34.051
13680.000	0.500	34.101
13690.000	0.500	34.151
13700.000	0.500	34.201
13710.000	0.500	34.251
13720.000	0.500	34.301
13730.000	0.500	34.351
13740.000	0.500	34.401
13750.000	0.500	34.451
13760.000	0.500	34.501
13770.000	0.500	34.551
13780.000	0.500	34.601
13790.000	0.500	34.651
13800.000	0.500	34.701
13810.000	0.500	34.751
13820.000	0.500	34.801
13830.000	0.500	34.851
13840.000	0.500	34.901
13850.000	0.500	34.951
13860.000	0.500	35.001
13870.000	0.500	35.051
13880.000	0.500	35.101
13890.000	0.500	35.151
13900.000	0.500	35.201
13910.000	0.500	35.251
13920.000	0.500	35.301
13930.000	0.500	35.351
13940.000	0.500	35.401
13950.000	0.500	35.451
13960.000	0.500	35.501
13970.000	0.500	35.551
13980.000	0.500	35.601
13990.000	0.500	35.651
14000.000	0.500	35.701
14010.000	0.500	35.751
14020.000	0.500	35.801
14030.000	0.500	35.851
14040.000	0.500	35.901
14050.000	0.500	35.951
14060.000	0.500	36.001
14070.000	0.500	36.051
14080.000	0.500	36.101
14090.000	0.500	36.151
14100.000	0.500	36.201
14110.000	0.500	36.251
14120.000	0.500	36.301
14130.000	0.500	36.351
14140.000	0.500	36.401
14150.000	0.500	36.451
14160.000	0.500	36.501
14170.000	0.500	36.551
14180.000	0.500	36.601
14190.000	0.500	36.651
14200.000	0.500	36.701
14210.000	0.500	36.751
14220.000	0.500	36.801
14230.000	0.500	36.851
14240.000	0.500	36.901
14250.000	0.500	36.951
14260.000	0.500	37.001
14270.000	0.500	37.051
14280.000	0.500	37.101
14290.000	0.500	37.151
14300.000	0.500	37.201
14310.000	0.500	37.251
14320.000	0.500	37.301
14330.000	0.500	37.351
14340.000	0.500	37.401
14350.000	0.500	37.451
14360.000	0.500	37.501
14370.000	0.500	37.551
14380.000	0.500	37.601
14390.000	0.500	37.651
14400.000	0.500	37.701
14410.000	0.500	37.751
14420.000	0.500	37.801
14430.000	0.500	37.851
14440.000	0.500	37.901
14450.000	0.500	37.951
14460.000	0.500	38.001
14470.000	0.500	38.051
14480.000	0.500	38.101
14490.000	0.500	38.151
14500.000	0.500	38.201
14510.000	0.500	38.251
14520.000	0.500	38.301
14530.000	0.500	38.351
14540.000	0.500	38.401
14550.000	0.500	38.451
14560.000	0.500	38.501
14570.000	0.500	38.551
14580.000	0.500	38.601
14590.000	0.500	38.651
14600.000	0.500	38.701
14610.000	0.500	38.751
14620.000	0.500	38.801
14630.000	0.500	38.851
14640.000	0.500	38.901
14650.000	0.500	38.951
14660.000	0.500	39.001
14670.000	0.500	39.051
14680.000	0.500	39.101
14690.000	0.500	39.151
14700.000	0.500	39.201
14710.000	0.500	39.251
14720.000	0.500	39.301
14730.000	0.500	39.351
14740.000	0.500	39.401
14750.000	0.500	39.451
14760.000	0.500	39.501
14770.000	0.500	39.551
14780.000	0.500	39.601
14790.000	0.500	39.651
14800.000	0.500	39.701
14810.000	0.500	39.751
14820.000	0.500	39.801
14830.000	0.500	39.851
14840.000	0.500	39.901
14850.000	0.500	39.951
14860.000	0.500	40.001
14870.000	0.500	40.051
14880.000	0.500	40.101
14890.000	0.500	40.151
14900.000	0.500	40.201
14910.000	0.500	40.251
14920.000	0.500	40.301
14930.000	0.500	40.351
14940.000	0.500	40.401
14950.000	0.500	40.451
14960.000	0.500	40.501
14970.000	0.500	40.551
14980.000	0.500	40.601
14990.000	0.500	40.651
15000.000	0.500	40.701



LONGITUDINAL SECTION (CHAINAGE 13500m TO 14772.23m)



A	08/09/14	DMRB Stage 2 Report	DAD	CMM	GAH	EHB
Rev	Rev. Date	Purpose of revision	Drawn	Checked	Rev'd	Apprv'd



85 Bothwell St, Glasgow, G2 7HX  
 Tel: +44(0)141 243 8000 Fax: +44(0)141 226 3109  
 www.jacobs.com



Drawing title  
**DMRB STAGE 2  
 INVERNESS TO GOLLANFIELD  
 OPTION 1B PLAN & PROFILE  
 CH 13500 TO CH 14772.23**

Drawing status  
**PRELIMINARY**

Scale  
 1:2,500 @ A1 | DO NOT SCALE

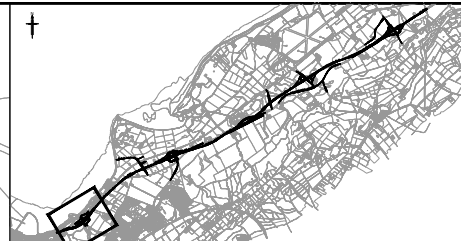
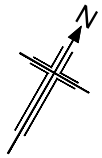
Jacobs No. B1557601

Drawing number  
**B1557601/MLA/1210**

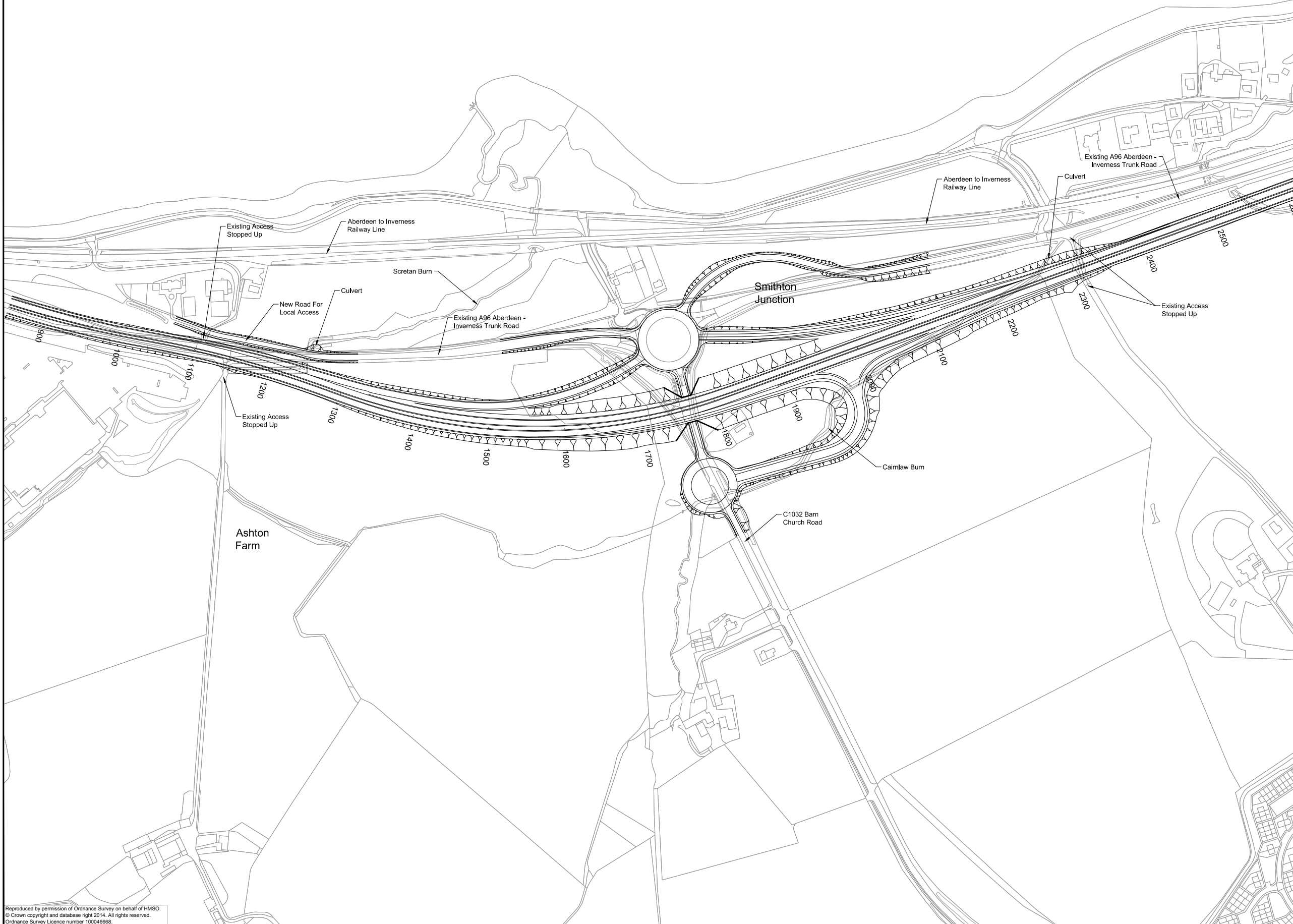
Rev  
**A**

This drawing is not to be used in whole or part other than for the intended purpose and project as defined on this drawing. Refer to the contract for full terms and conditions.





**NOTES:**  
 1. All dimensions are in metres unless stated otherwise.



This OS Mastermap was obtained in March 2014 and is for illustration purposes only.

A	08/09/14	DMRB Stage 2 Report	DAD	CMM	GAH	EHB
Rev	Rev. Date	Purpose of revision	Drawn	Checked	Rev'd	Apprv'd

**JACOBS**  
 85 Bothwell St, Glasgow, G2 7HX  
 Tel: +44(0)141 243 8000 Fax: +44(0)141 226 3109  
 www.jacobs.com



**A96**  
**DUALLING**  
 INVERNESS TO NAIRN  
 (incl. Malmogpass)  
 DMRB STAGE 2

Drawing title  
**DMRB STAGE 2  
 INVERNESS TO GOLLANFIELD  
 SMITHTON JUNCTION  
 OPTION 1B**

Drawing status  
**PRELIMINARY**

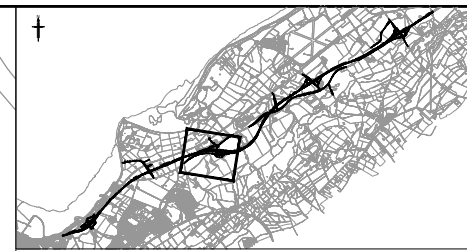
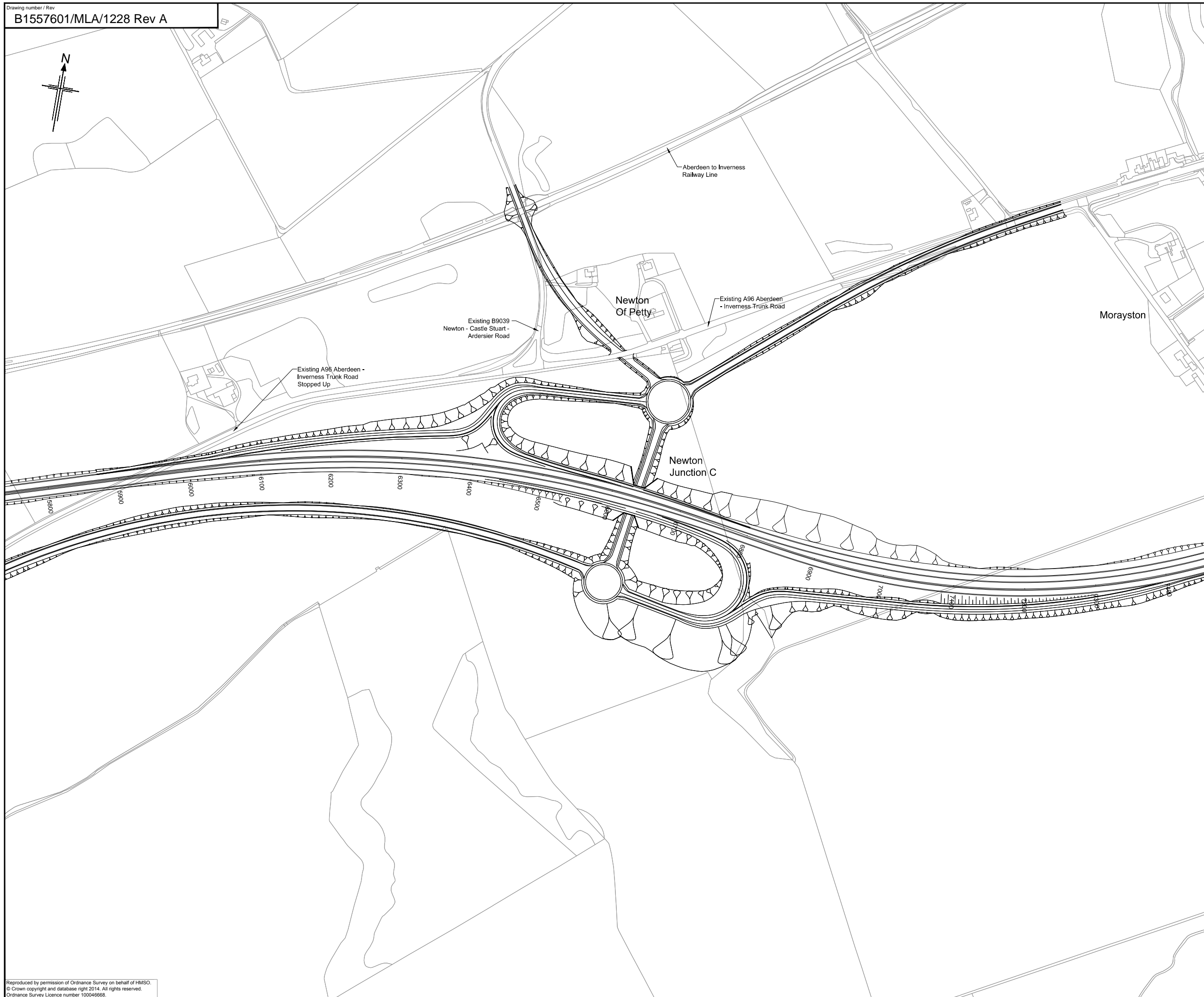
Scale  
 1:2,500 @ A1 **DO NOT SCALE**

Jacobs No. B1557601  
 Client no.

Drawing number  
**B1557601/MLA/1211** Rev **A**

Reproduced by permission of Ordnance Survey on behalf of HMSO.  
 © Crown copyright and database right 2014. All rights reserved.  
 Ordnance Survey Licence number 100046668.

This drawing is not to be used in whole or part other than for the intended purpose and project as defined on this drawing. Refer to the contract for full terms and conditions.



**NOTES:**  
 1. All dimensions are in metres unless stated otherwise.

This OS Mastermap was obtained in March 2014 and is for illustration purposes only.

A	08/09/14	DMRB Stage 2 Report	DAD	CMM	GAH	EHB
Rev	Rev. Date	Purpose of revision	Drawn	Checked	Rev'd	Apprv'd

**JACOBS**  
 85 Bothwell St, Glasgow, G2 7HX  
 Tel: +44(0)141 243 8000 Fax: +44(0)141 226 3109  
 www.jacobs.com



Drawing title  
**DMRB STAGE 2  
 INVERNESS TO GOLLANFIELD  
 NEWTON JUNCTION C  
 OPTION 1B (MV)**

Drawing status  
**PRELIMINARY**

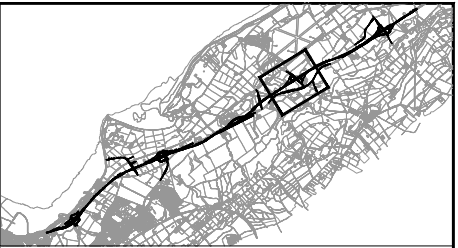
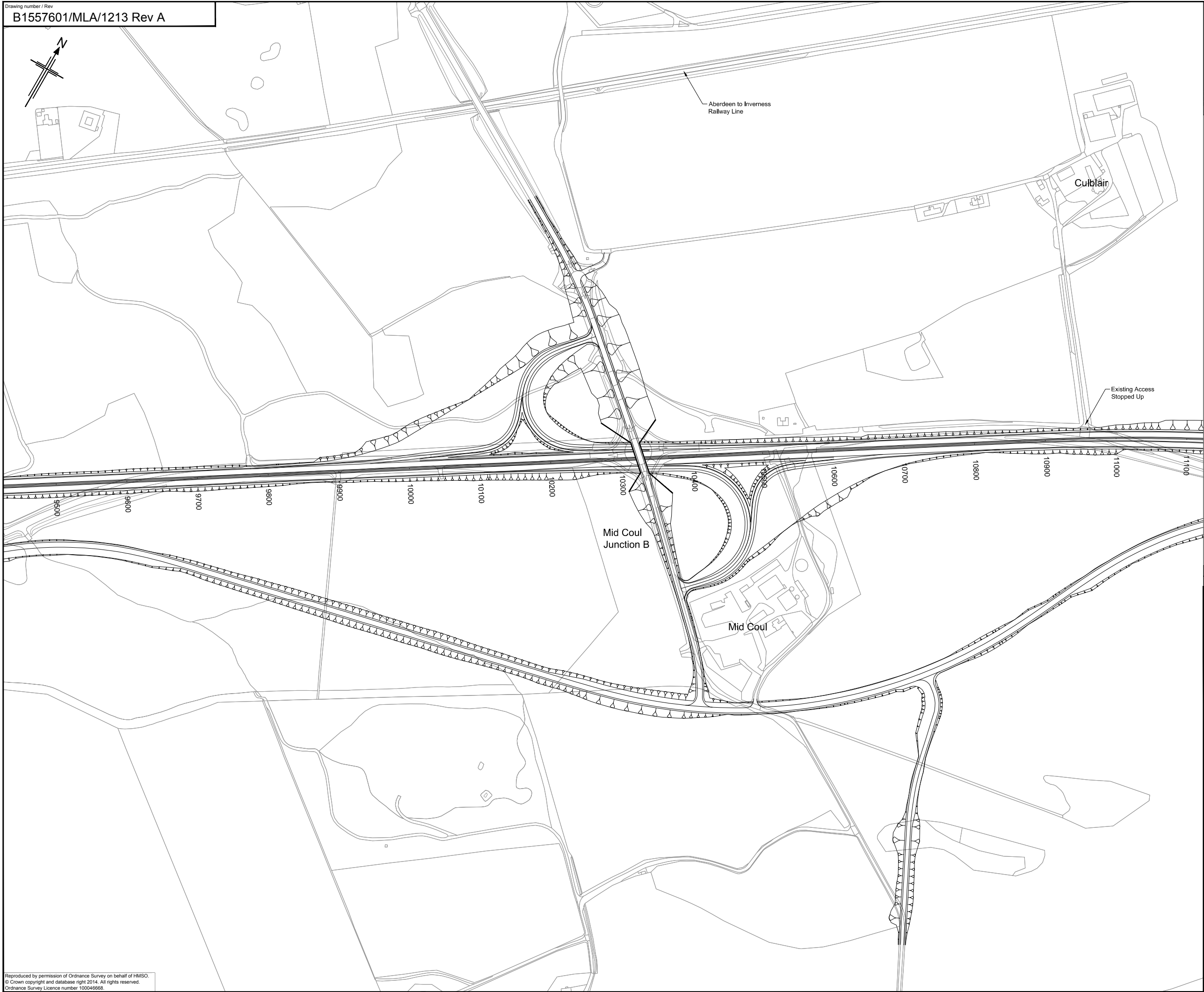
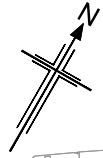
Scale  
 1:2,500 @ A1 **DO NOT SCALE**

Jacobs No. **B1557601**

Drawing number **B1557601/MLA/1228** Rev **A**

This drawing is not to be used in whole or part other than for the intended purpose and project as defined on this drawing. Refer to the contract for full terms and conditions.





**NOTES:**  
 1. All dimensions are in metres unless stated otherwise.

A	08/09/14	DMRB Stage 2 Report	DAD	CMM	GAH	EHB
Rev	Rev. Date	Purpose of revision	Drawn	Checked	Rev'd	Apprv'd

**JACOBS**  
 85 Bothwell St, Glasgow, G2 7HX  
 Tel: +44(0)141 243 8000 Fax: +44(0)141 226 3109  
 www.jacobs.com



Drawing title  
**DMRB STAGE 2  
 INVERNESS TO GOLLANFIELD  
 MID COUL JUNCTION B  
 OPTION 1B**

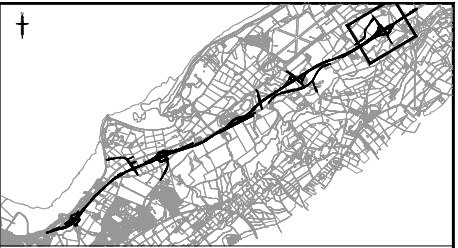
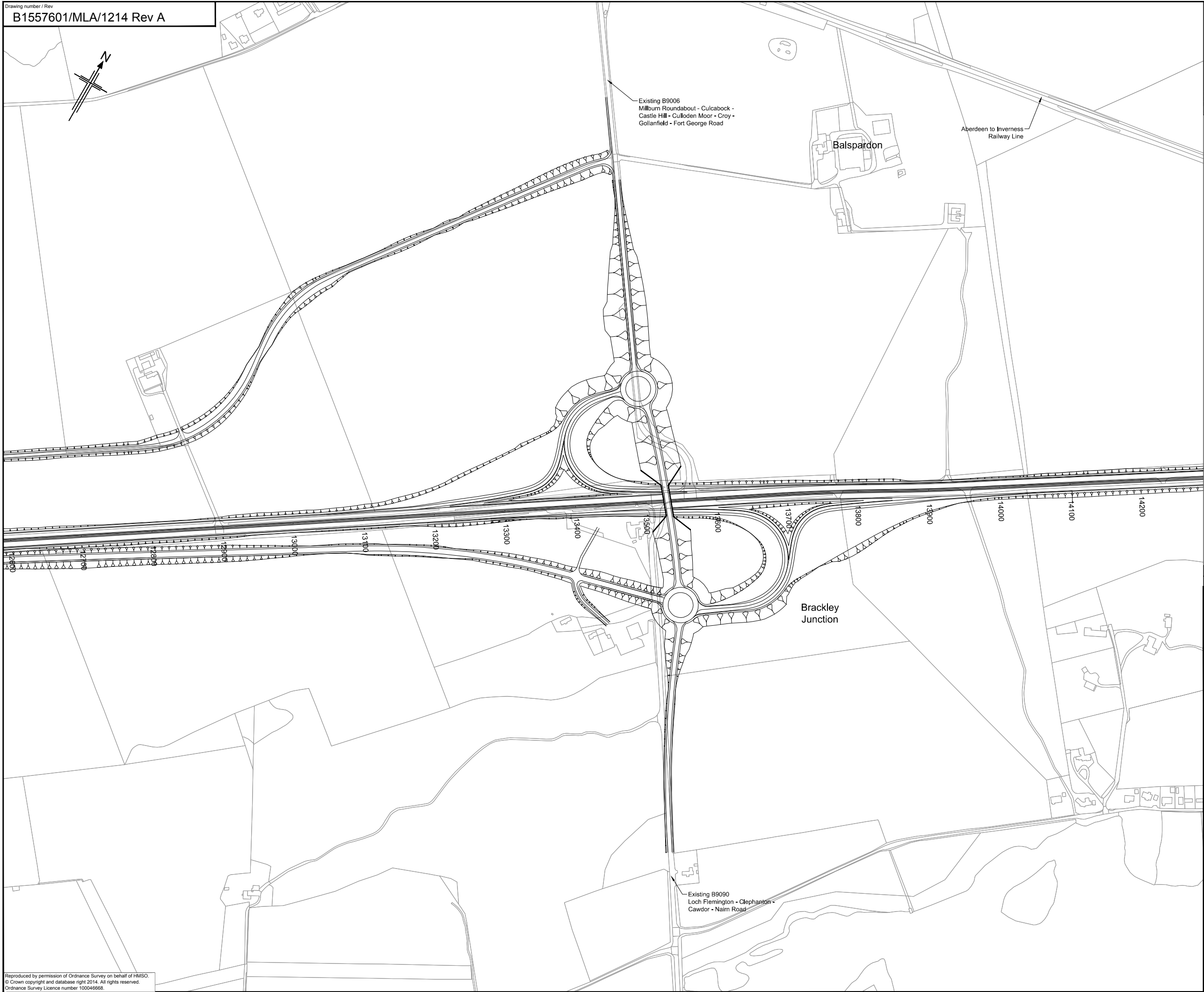
Drawing status  
**PRELIMINARY**

Scale  
 1:2,500 @ A1 **DO NOT SCALE**

Jacobs No. B1557601  
 Client no.  
 Drawing number **B1557601/MLA/1213** Rev **A**

Reproduced by permission of Ordnance Survey on behalf of HMSO.  
 © Crown copyright and database right 2014. All rights reserved.  
 Ordnance Survey Licence number 100046668.

This drawing is not to be used in whole or part other than for the intended purpose and project as defined on this drawing. Refer to the contract for full terms and conditions.



**NOTES:**  
 1. All dimensions are in metres unless stated otherwise.

This OS Mastermap was obtained in March 2014 and is for illustration purposes only.

A	08/09/14	DMRB Stage 2 Report	DAD	CMM	GAH	EHB
Rev	Rev. Date	Purpose of revision	Drawn	Checked	Rev'd	Apprv'd

**JACOBS**  
 85 Bothwell St, Glasgow, G2 7HX  
 Tel: +44(0)141 243 8000 Fax: +44(0)141 226 3109  
 www.jacobs.com

Client

Project

Drawing title  
**DMRB STAGE 2  
 INVERNESS TO GOLLANFIELD  
 BRACKLEY JUNCTION  
 OPTION 1B**

Drawing status  
**PRELIMINARY**

Scale  
 1:2,500 @ A1 **DO NOT SCALE**

Jacobs No. B1557601  
 Client no.  
 Drawing number **B1557601/MLA/1214** Rev **A**