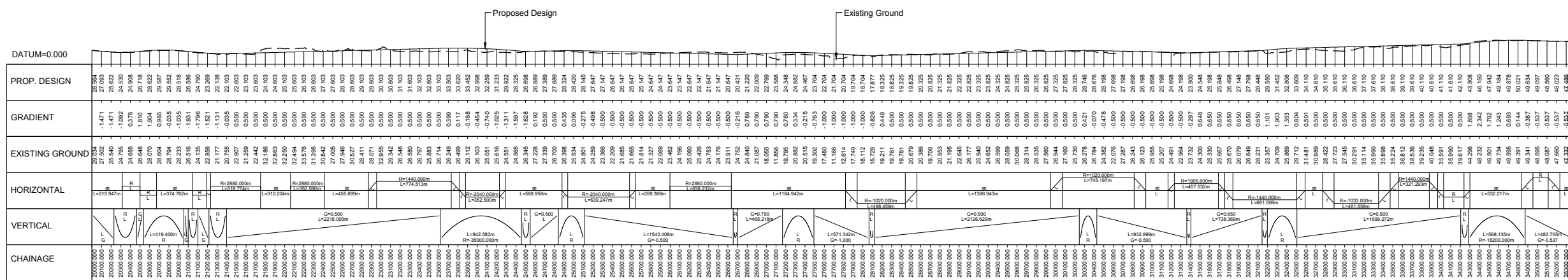


Reproduced by permission of Ordnance Survey on behalf of HMSO.  
 © Crown copyright and database right 2014. All rights reserved.  
 Ordnance Survey Licence number 100046668.

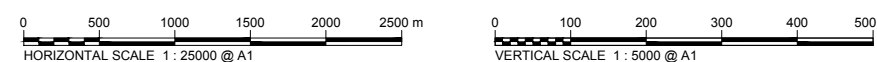
**PLAN**  
 SCALE 1 : 25000

**NOTES:**  
 1. All dimensions are in metres unless stated otherwise.

This OS Mastermap was obtained in March 2014 and is for illustration purposes only.



**LONGITUDINAL SECTION (CHAINAGE 20000m TO 35357.602m)**



A	08/09/14	DMRB Stage 2 Report	DAD	CMM	GAH	EHB
Rev	Rev. Date	Purpose of revision	Drawn	Checked	Rev'd	Appr'd

**JACOBS**  
 95 Bothwell St, Glasgow, G2 7HX  
 Tel: +44(0)141 243 8000 Fax: +44(0)141 226 3109  
 www.jacobs.com

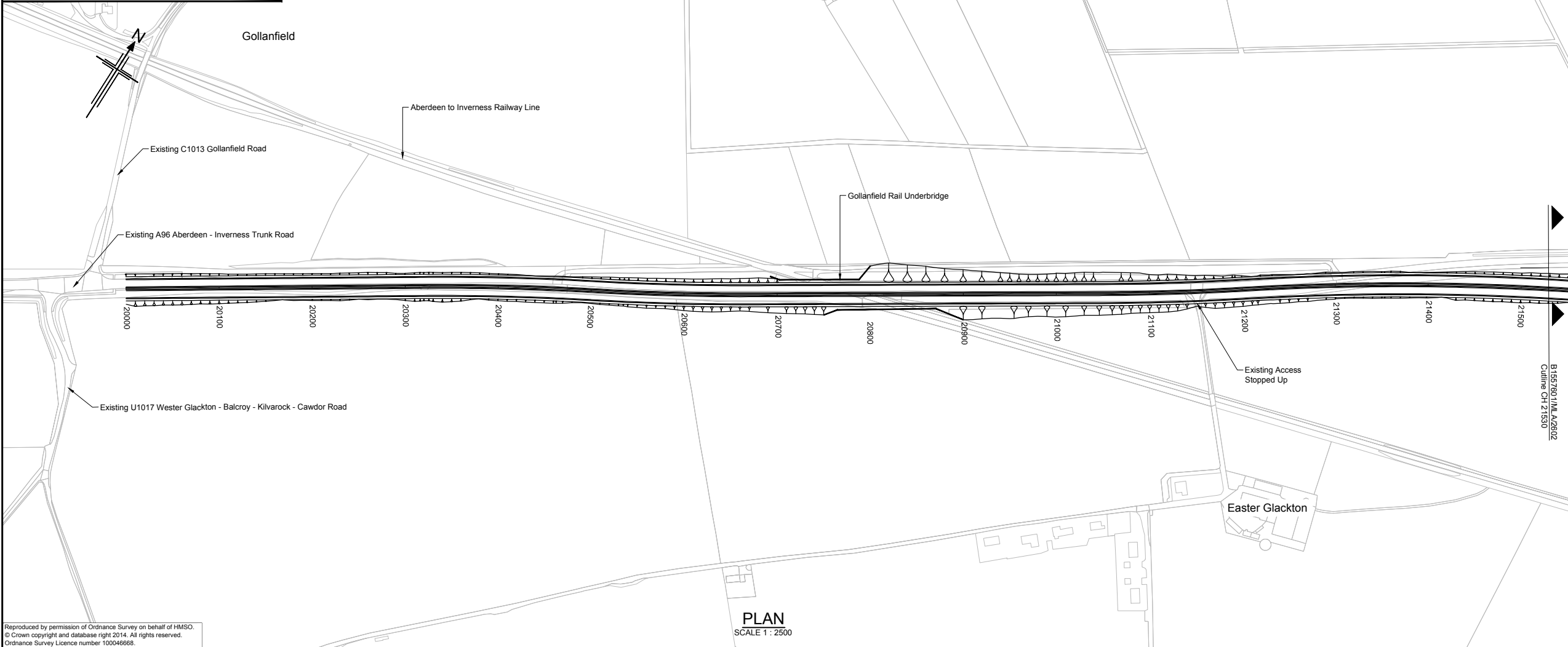
Client

Project

Drawing title  
**DMRB STAGE 2  
 NAIRN BYPASS  
 OPTION 2F PLAN & PROFILE  
 CH 20000 TO CH 35357.602**

Drawing status	PRELIMINARY	
Scale	AS SHOWN @ A1	DO NOT SCALE
Jacobs No.	B1557601	
Client no.		
Drawing number	B1557601/MLA/2600	Rev A

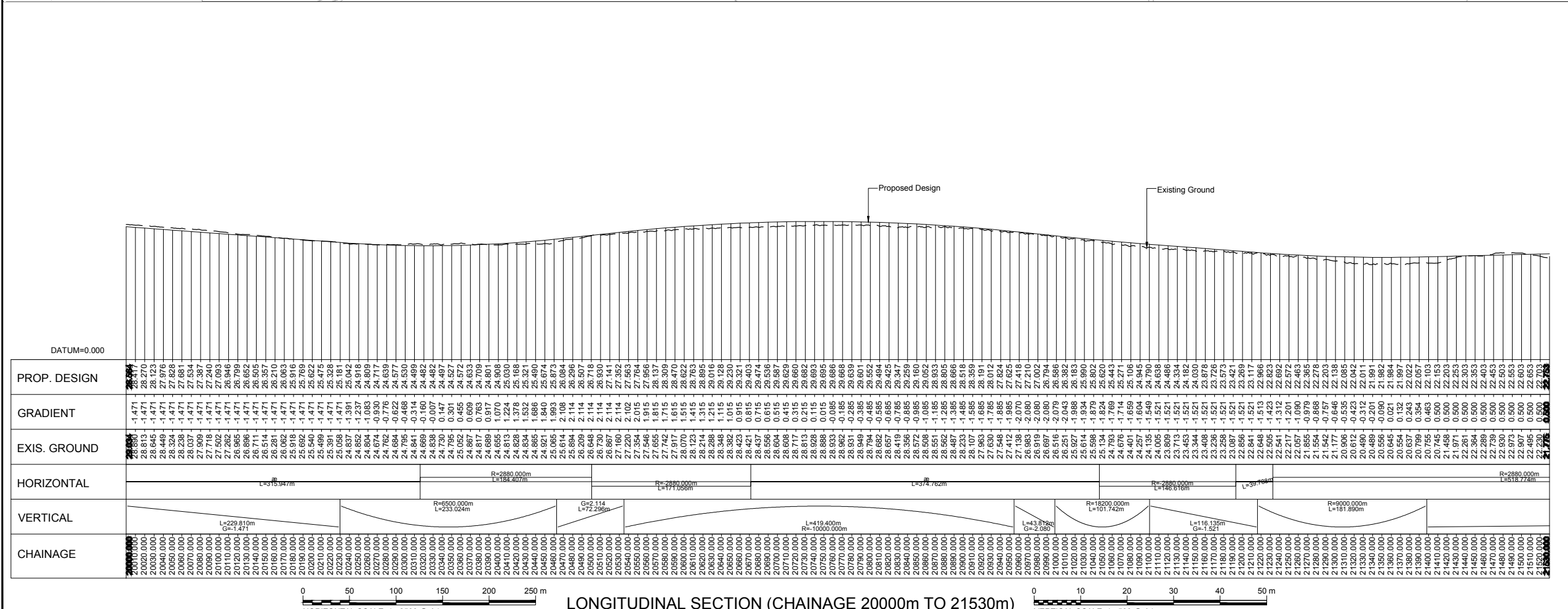
This drawing is not to be used in whole or part other than for the intended purpose and project as defined on this drawing. Refer to the contract for full terms and conditions.



NOTES:  
 1. All dimensions are in metres unless stated otherwise.

This OS Mastermap was obtained in March 2014 and is for illustration purposes only.

Reproduced by permission of Ordnance Survey on behalf of HMSO.  
 © Crown copyright and database right 2014. All rights reserved.  
 Ordnance Survey Licence number 100046668.



A	08/09/14	DMRB Stage 2 Report	DAD	CMM	GAH	EHB
Rev	Rev. Date	Purpose of revision	Drawn	Checked	Rev'd	Apprv'd

**JACOBS**  
 95 Bothwell St, Glasgow, G2 7HX  
 Tel: +44(0)141 243 8000 Fax: +44(0)141 226 3109  
 www.jacobs.com

Client  
  
**TRANSPORT SCOTLAND**  
 COMHAIL ALBA

Project  
  
**A96 DUALLING**  
 INVERNESS TO NAIRN  
 (incl. Nairn Bypass)

Drawing title  
**DMRB STAGE 2  
 NAIRN BYPASS  
 OPTION 2F PLAN & PROFILE  
 CH 20000 TO CH 21530**

Drawing status  
**PRELIMINARY**

Scale  
 AS SHOWN @ A1 | DO NOT SCALE

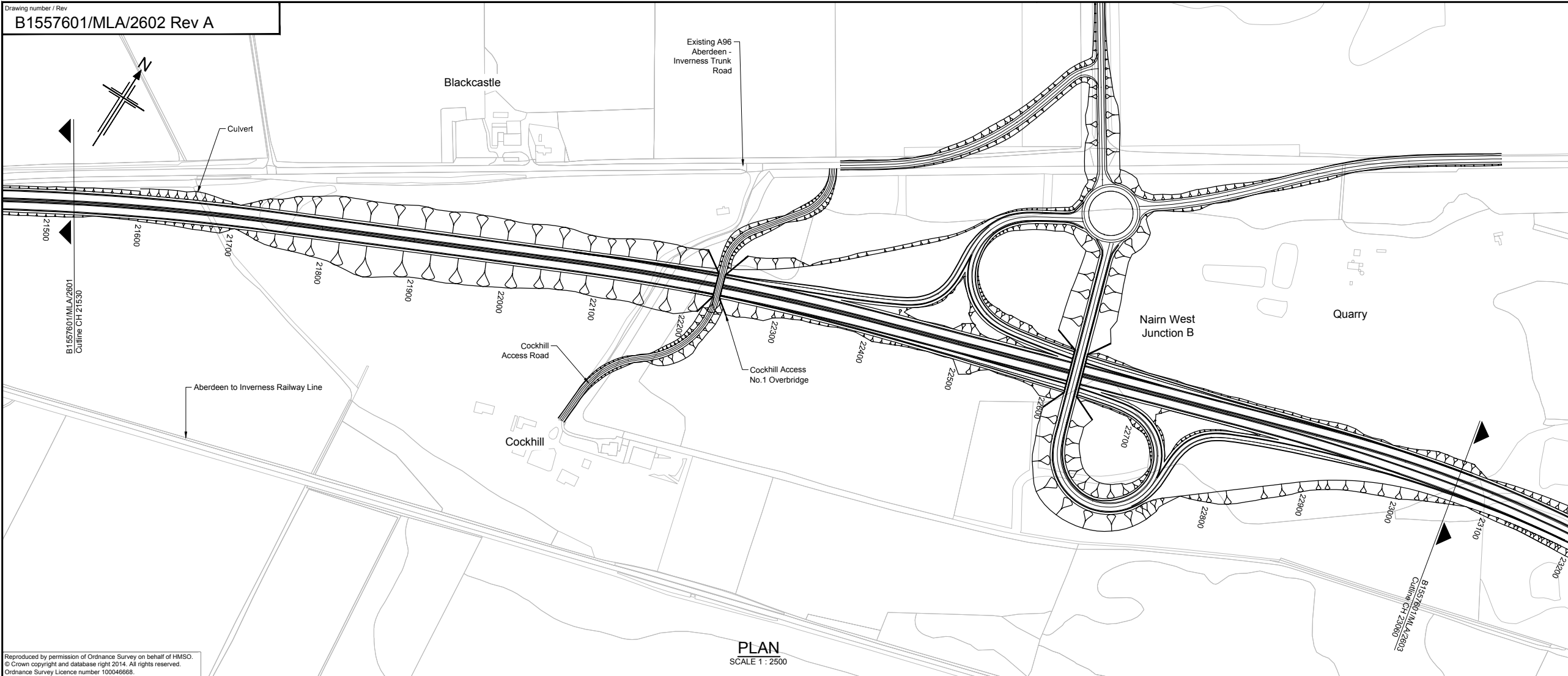
Jacobs No.  
 B1557601

Drawing number  
**B1557601/MLA/2601**

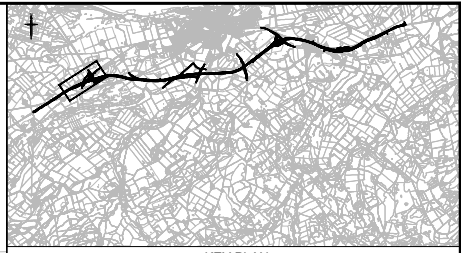
Rev  
**A**

This drawing is not to be used in whole or part other than for the intended purpose and project as defined on this drawing. Refer to the contract for full terms and conditions.



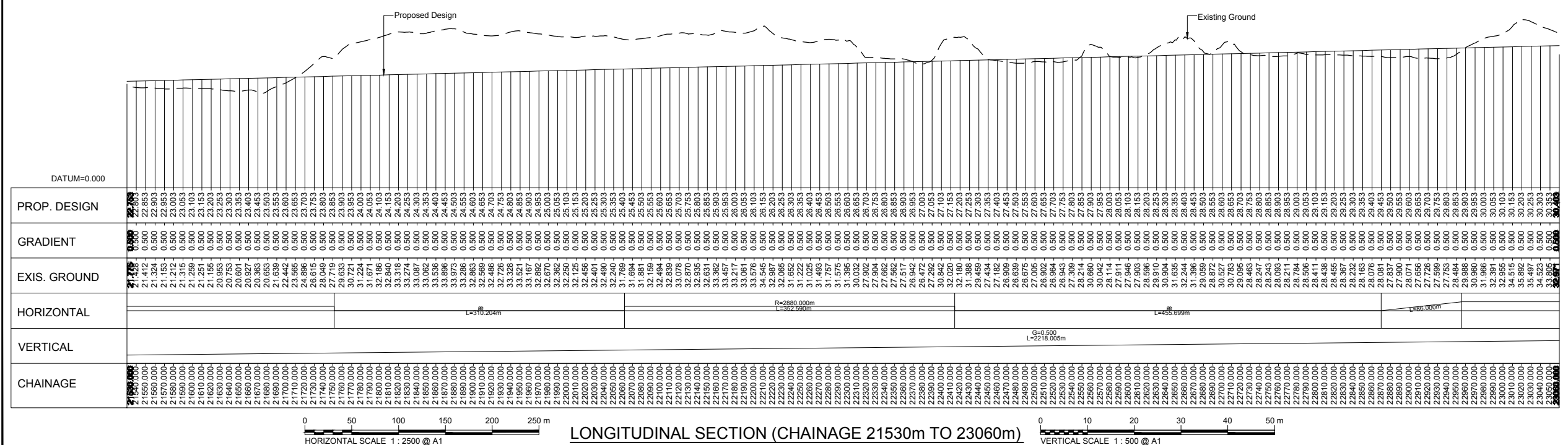


Reproduced by permission of Ordnance Survey on behalf of HMSO.  
 © Crown copyright and database right 2014. All rights reserved.  
 Ordnance Survey Licence number 100046668.



- NOTES:
- All dimensions are in metres unless stated otherwise.
  - For Nairn West Junction B refer to drawing No. B1557601/MLA/2612

This OS Mastermap was obtained in March 2014 and is for illustration purposes only.



Rev	Rev. Date	Purpose of revision	Drawn	Checked	Rev'd	Apprv'd
A	08/09/14	DMRB Stage 2 Report	DAD	CMM	GAH	EHB

**JACOBS**  
 95 Bothwell St, Glasgow, G2 7HX  
 Tel: +44(0)141 243 8000 Fax: +44(0)141 226 3109  
 www.jacobs.com

Client

TRANSPORT SCOTLAND  
 COMHAIL ALBA

Project

A96  
 DUALLING  
 INVERNESS TO NAIRN  
 (incl. Nairn Bypass)

Drawing title  
**DMRB STAGE 2  
 NAIRN BYPASS  
 OPTION 2F PLAN & PROFILE  
 CH 21530 TO CH 23060**

Drawing status  
**PRELIMINARY**

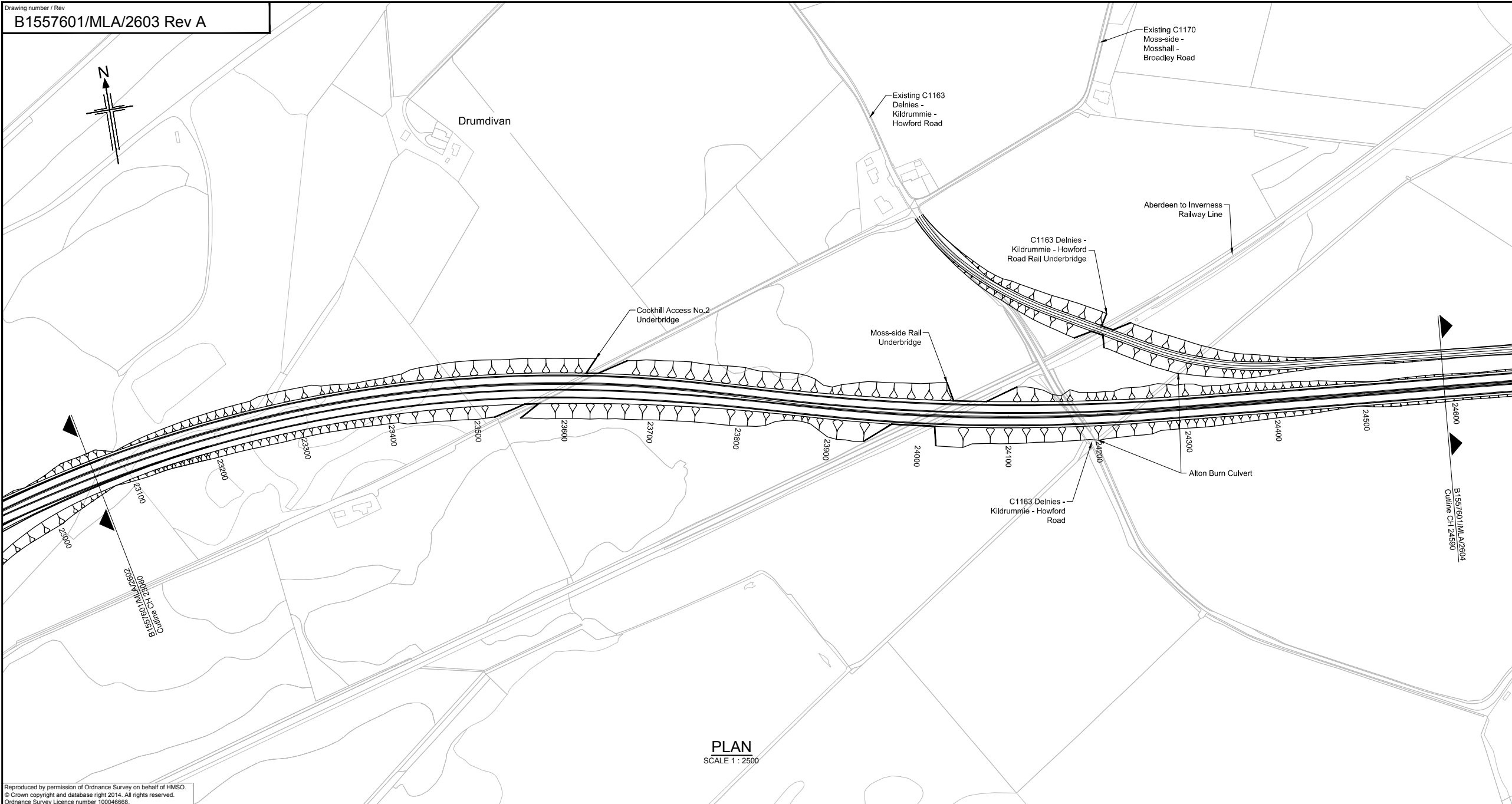
Scale  
 AS SHOWN @ A1      DO NOT SCALE

Jacobs No.  
 B1557601

Drawing number  
**B1557601/MLA/2602**

Rev  
**A**

This drawing is not to be used in whole or part other than for the intended purpose and project as defined on this drawing. Refer to the contract for full terms and conditions.



**PLAN**  
 SCALE 1 : 2500

Reproduced by permission of Ordnance Survey on behalf of HMSO.  
 © Crown copyright and database right 2014. All rights reserved.  
 Ordnance Survey Licence number 100046668.



**NOTES:**  
 1. All dimensions are in metres unless stated otherwise.

This OS Mastermap was obtained in March 2014 and is for illustration purposes only.

A	08/09/14	DMRB Stage 2 Report	DAD	CMM	GAH	EHB
Rev	Rev. Date	Purpose of revision	Drawn	Checked	Rev'd	Apprv'd



Client



Project

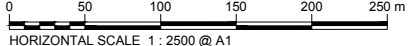
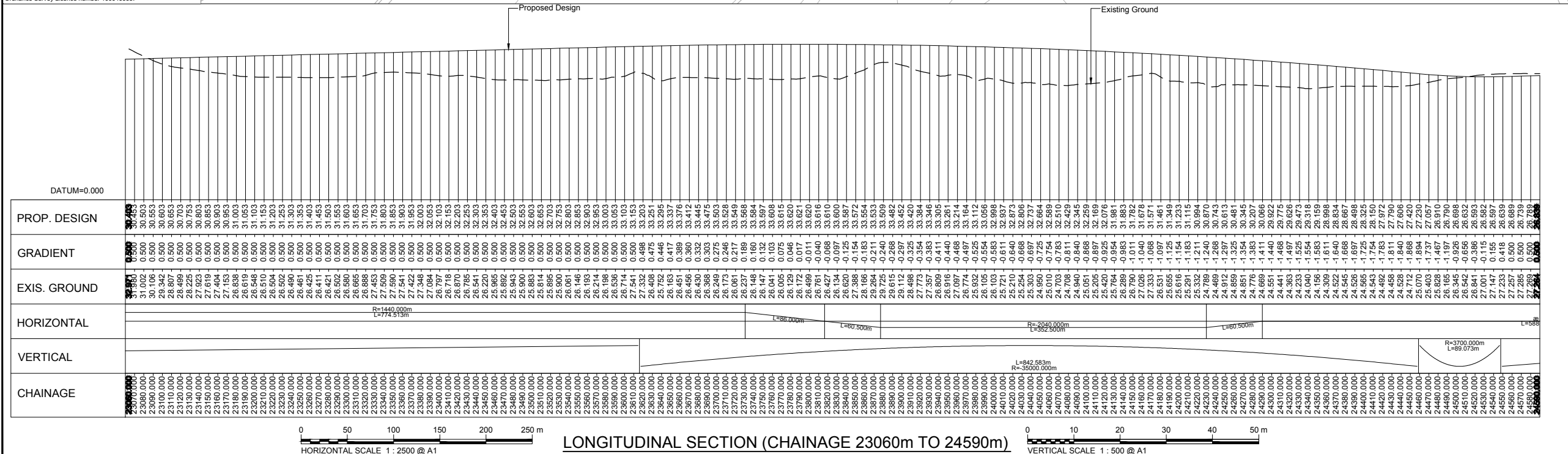


Drawing title  
**DMRB STAGE 2  
 NAIRN BYPASS  
 OPTION 2F PLAN & PROFILE  
 CH 23060 TO CH 24590**

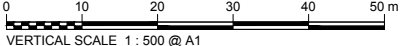
Drawing status  
**PRELIMINARY**

Scale  
**AS SHOWN @ A1 DO NOT SCALE**

JACOBS No. B1557601  
 Client no.  
 Drawing number  
**B1557601/MLA/2603**  
 Rev  
**A**

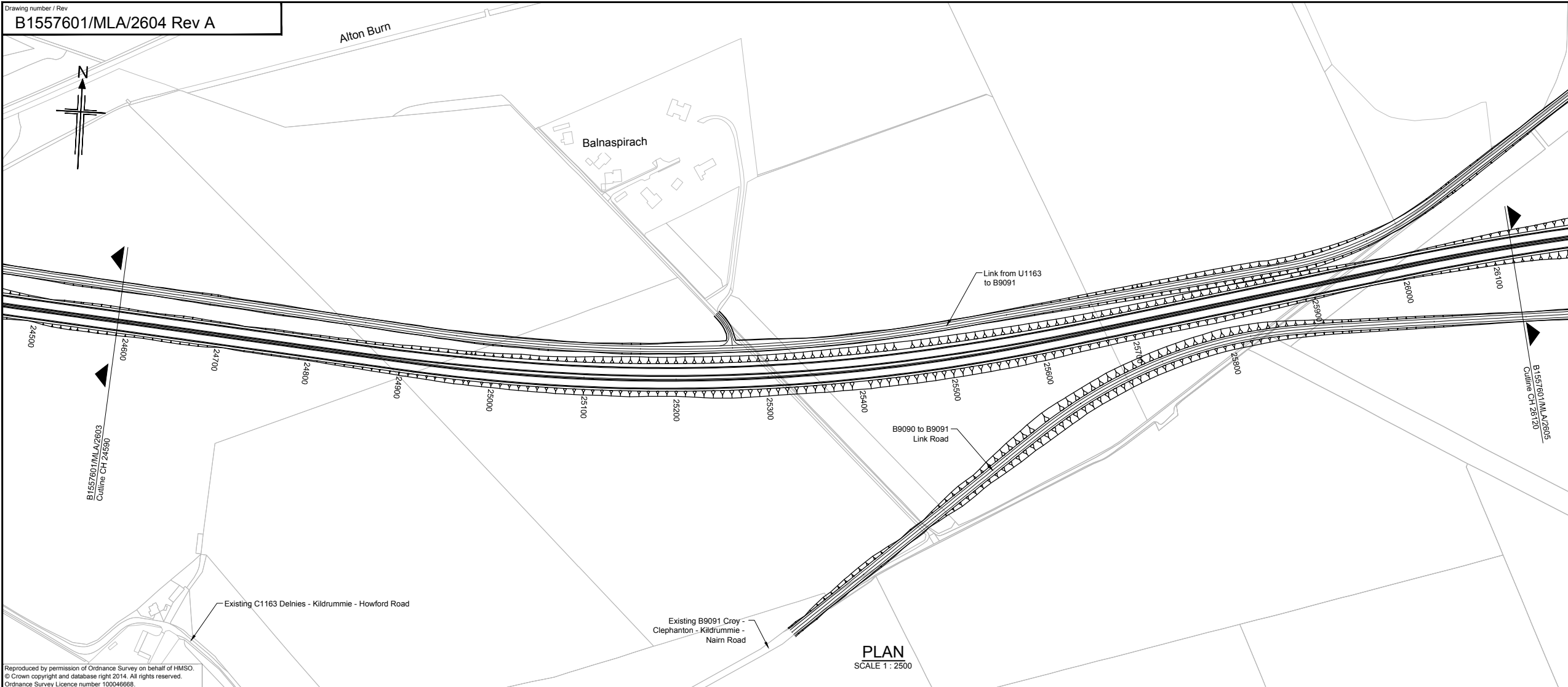


**LONGITUDINAL SECTION (CHAINAGE 23060m TO 24590m)**



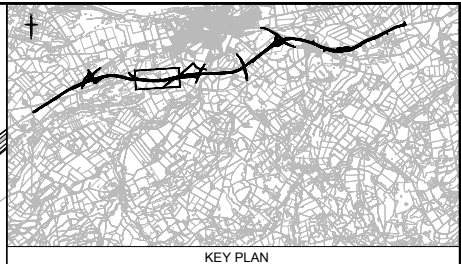
This drawing is not to be used in whole or part other than for the intended purpose and project as defined on this drawing. Refer to the contract for full terms and conditions.





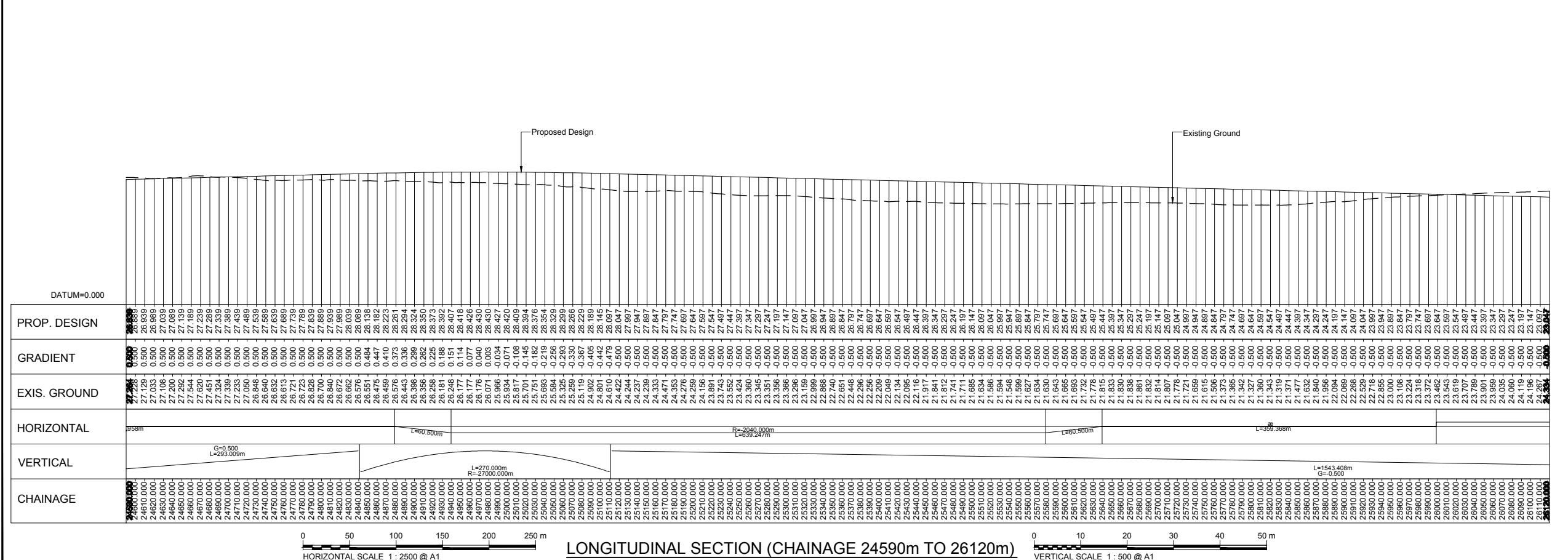
**PLAN**  
 SCALE 1 : 2500

Reproduced by permission of Ordnance Survey on behalf of HMSO.  
 © Crown copyright and database right 2014. All rights reserved.  
 Ordnance Survey Licence number 100046868.



**NOTES:**  
 1. All dimensions are in metres unless stated otherwise.  
 2. For side road B9090 and B9091 refer to drawing no. B1557601/MLA/2614

This OS Mastermap was obtained in March 2014 and is for illustration purposes only.



A	08/09/14	DMRB Stage 2 Report	DAD	CMM	GAH	EHB
Rev	Rev. Date	Purpose of revision	Drawn	Checked	Rev'd	Apprv'd

**JACOBS**  
 95 Bothwell St, Glasgow, G2 7HX  
 Tel: +44(0)141 243 8000 Fax: +44(0)141 226 3109  
 www.jacobs.com

Client  
  
 TRANSPORT SCOTLAND  
 COMHAIL ALBA

Project  
  
 A96 DUALLING  
 INVERNESS TO NAIRN  
 (incl. Nairn Bypass)

Drawing title  
**DMRB STAGE 2  
 NAIRN BYPASS  
 OPTION 2F PLAN & PROFILE  
 CH 24590 TO CH 26120**

Drawing status  
**PRELIMINARY**

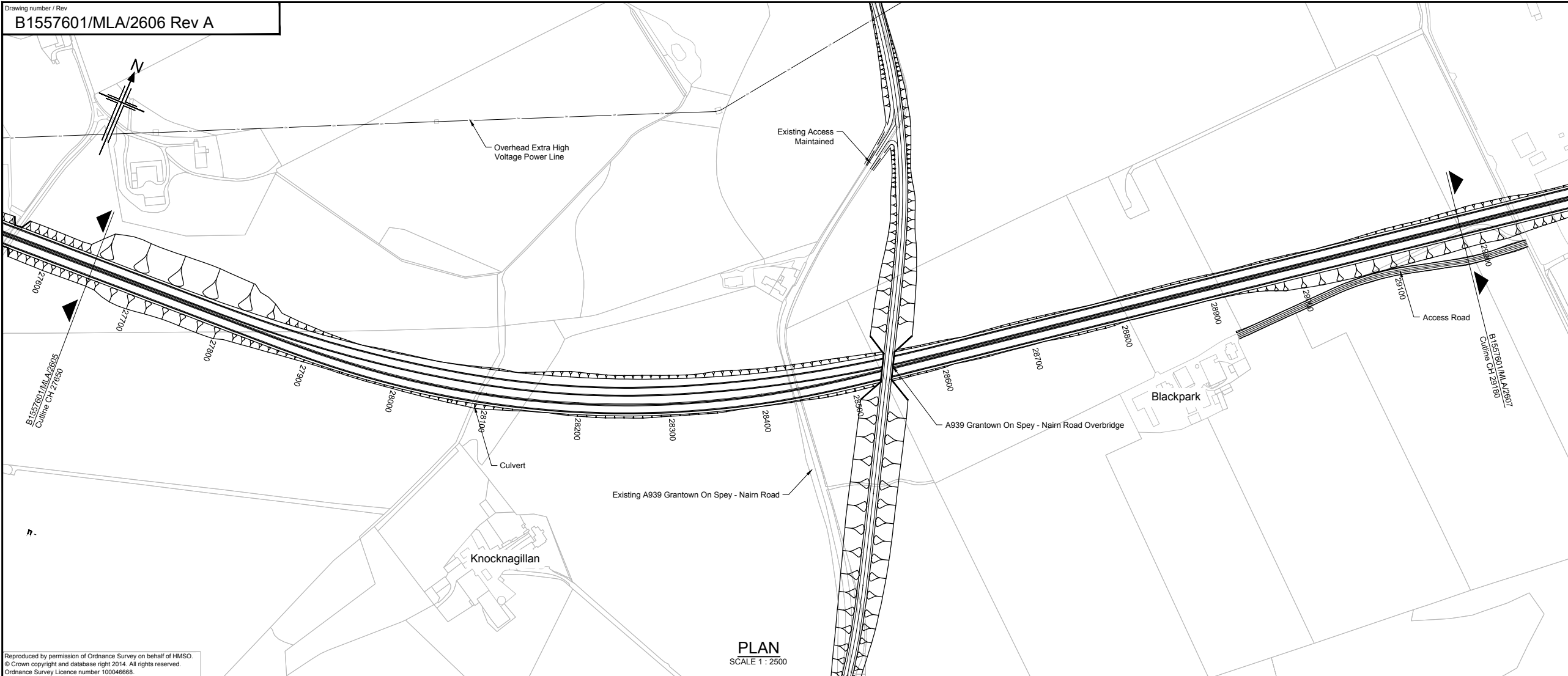
Scale  
 AS SHOWN @ A1 DO NOT SCALE

Jacobs No. B1557601  
 Client no.  
 Drawing number **B1557601/MLA/2604** Rev **A**

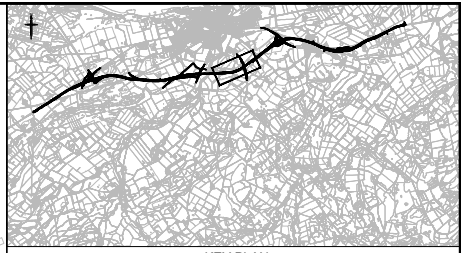
This drawing is not to be used in whole or part other than for the intended purpose and project as defined on this drawing. Refer to the contract for full terms and conditions.





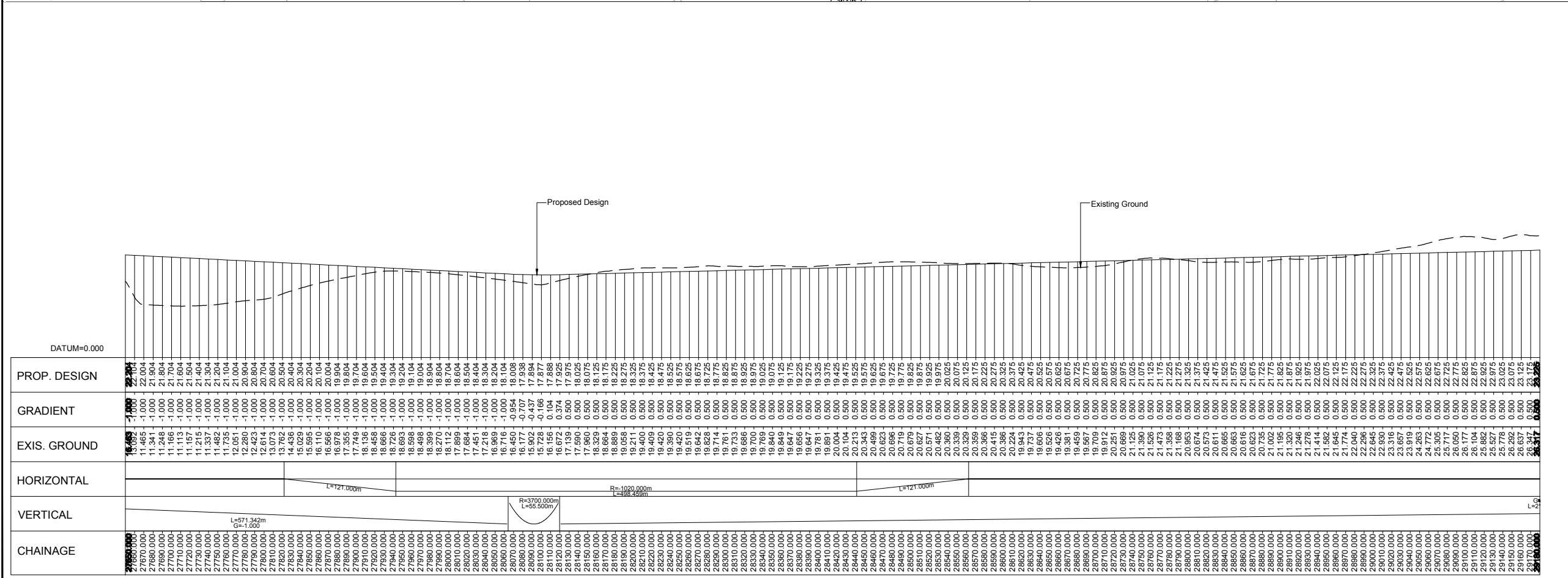


Reproduced by permission of Ordnance Survey on behalf of HMSO.  
 © Crown copyright and database right 2014. All rights reserved.  
 Ordnance Survey Licence number 100046668.



NOTES:  
 1. All dimensions are in metres unless stated otherwise.

This OS Mastermap was obtained in March 2014 and is for illustration purposes only.



CHAINAGE	PROP. DESIGN	GRADIENT	EXIS. GROUND	HORIZONTAL	VERTICAL
27650.000	22.204	-1.000	16.063		
27670.000	22.004	-1.000	11.465		
27690.000	21.804	-1.000	11.341		
27710.000	21.604	-1.000	11.248		
27730.000	21.404	-1.000	11.166		
27750.000	21.204	-1.000	11.113		
27770.000	21.004	-1.000	11.079		
27790.000	20.804	-1.000	11.061		
27810.000	20.604	-1.000	11.057		
27830.000	20.404	-1.000	11.064		
27850.000	20.204	-1.000	11.081		
27870.000	20.004	-1.000	11.107		
27890.000	19.804	-1.000	11.141		
27910.000	19.604	-1.000	11.181		
27930.000	19.404	-1.000	11.226		
27950.000	19.204	-1.000	11.274		
27970.000	19.004	-1.000	11.324		
27990.000	18.804	-1.000	11.375		
28010.000	18.604	-1.000	11.427		
28030.000	18.404	-1.000	11.479		
28050.000	18.204	-1.000	11.531		
28070.000	18.004	-1.000	11.582		
28090.000	17.804	-1.000	11.632		
28110.000	17.604	-1.000	11.681		
28130.000	17.404	-1.000	11.728		
28150.000	17.204	-1.000	11.773		
28170.000	17.004	-1.000	11.816		
28190.000	16.804	-1.000	11.856		
28210.000	16.604	-1.000	11.893		
28230.000	16.404	-1.000	11.927		
28250.000	16.204	-1.000	11.957		
28270.000	16.004	-1.000	11.983		
28290.000	15.804	-1.000	12.005		
28310.000	15.604	-1.000	12.023		
28330.000	15.404	-1.000	12.037		
28350.000	15.204	-1.000	12.047		
28370.000	15.004	-1.000	12.053		
28390.000	14.804	-1.000	12.055		
28410.000	14.604	-1.000	12.053		
28430.000	14.404	-1.000	12.047		
28450.000	14.204	-1.000	12.037		
28470.000	14.004	-1.000	12.023		
28490.000	13.804	-1.000	12.005		
28510.000	13.604	-1.000	11.983		
28530.000	13.404	-1.000	11.957		
28550.000	13.204	-1.000	11.927		
28570.000	13.004	-1.000	11.893		
28590.000	12.804	-1.000	11.856		
28610.000	12.604	-1.000	11.816		
28630.000	12.404	-1.000	11.773		
28650.000	12.204	-1.000	11.728		
28670.000	12.004	-1.000	11.681		
28690.000	11.804	-1.000	11.632		
28710.000	11.604	-1.000	11.582		
28730.000	11.404	-1.000	11.531		
28750.000	11.204	-1.000	11.479		
28770.000	11.004	-1.000	11.427		
28790.000	10.804	-1.000	11.375		
28810.000	10.604	-1.000	11.324		
28830.000	10.404	-1.000	11.274		
28850.000	10.204	-1.000	11.226		
28870.000	10.004	-1.000	11.181		
28890.000	9.804	-1.000	11.141		
28910.000	9.604	-1.000	11.107		
28930.000	9.404	-1.000	11.079		
28950.000	9.204	-1.000	11.061		
28970.000	9.004	-1.000	11.057		
28990.000	8.804	-1.000	11.064		
29010.000	8.604	-1.000	11.081		
29030.000	8.404	-1.000	11.107		
29050.000	8.204	-1.000	11.141		
29070.000	8.004	-1.000	11.181		
29090.000	7.804	-1.000	11.226		
29110.000	7.604	-1.000	11.274		
29130.000	7.404	-1.000	11.324		
29150.000	7.204	-1.000	11.375		
29170.000	7.004	-1.000	11.427		
29180.000	6.804	-1.000	11.479		

Rev	Rev. Date	Purpose of revision	Drawn	Checked	Rev'd	Apprv'd
A	08/09/14	Design release 1	DAD	CMM	GAH	EHB

**JACOBS**  
 95 Bothwell St, Glasgow, G2 7HX  
 Tel: +44(0)141 243 8000 Fax: +44(0)141 226 3109  
 www.jacobs.com

Client  
  
 TRANSPORT SCOTLAND  
 COMHAIL ALBA

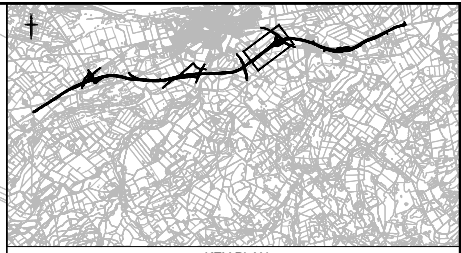
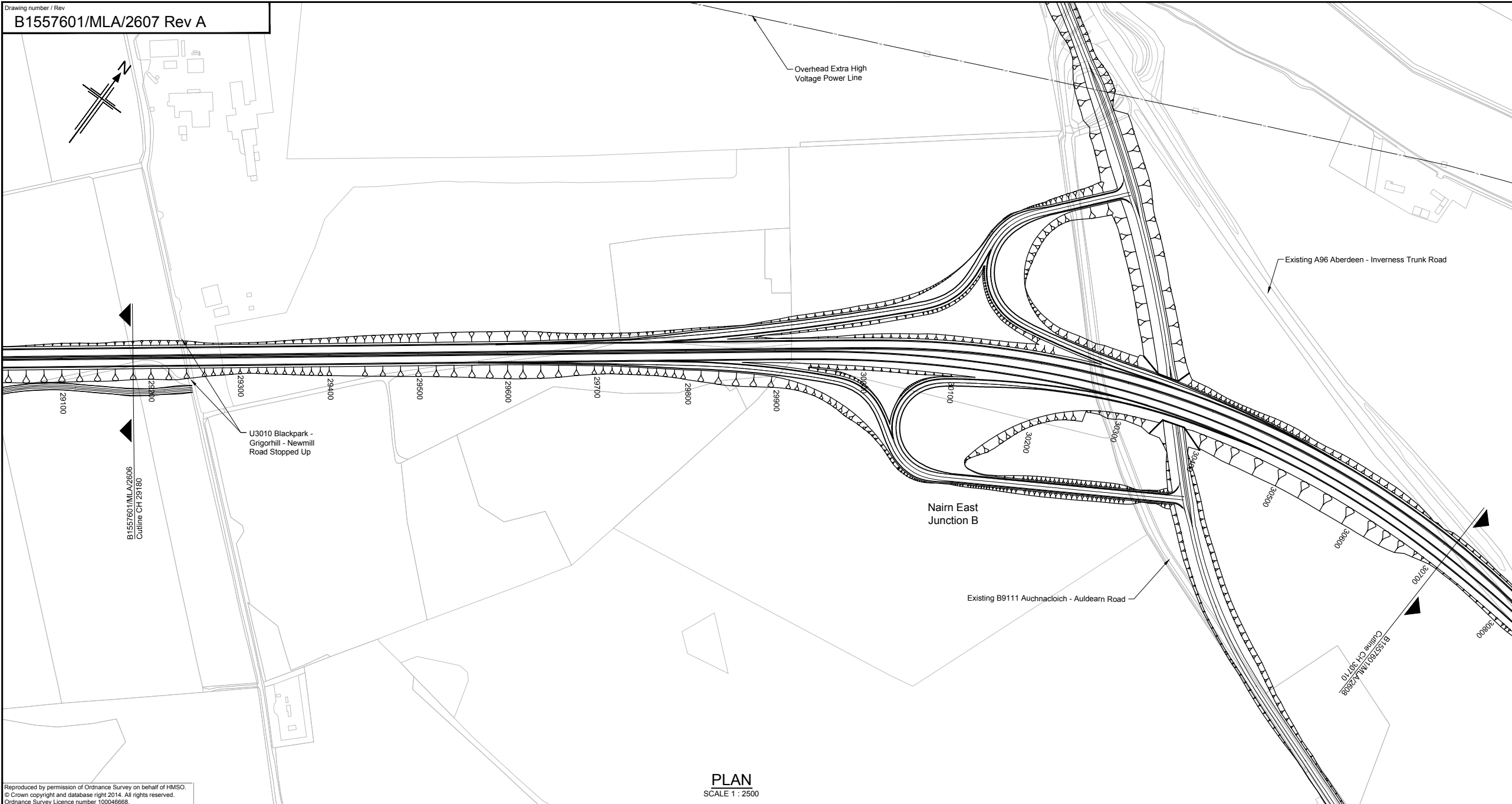
Project  
  
**A96 DUALLING**  
 INVERNESS TO NAIRN  
 (incl. Nairn Bypass)

Drawing title  
**DMRB STAGE 2  
 NAIRN BYPASS  
 OPTION 2F PLAN & PROFILE  
 CH 27650 TO CH 29180**

Drawing status: **PRELIMINARY**

Scale	AS SHOWN @ A1	DO NOT SCALE
Jacobs No.	B1557601	
Client no.		
Drawing number	<b>B1557601/MLA/2606</b>	Rev <b>A</b>

This drawing is not to be used in whole or part other than for the intended purpose and project as defined on this drawing. Refer to the contract for full terms and conditions.



**NOTES:**  
 1. All dimensions are in metres unless stated otherwise.  
 2. For Nairn East Junction B refer to drawing No. B1557601/MLA/2613.

This OS Mastermap was obtained in March 2014 and is for illustration purposes only.

Reproduced by permission of Ordnance Survey on behalf of HMSO.  
 © Crown copyright and database right 2014. All rights reserved.  
 Ordnance Survey Licence number 100046668.

**PLAN**  
 SCALE 1 : 2500

A	08/09/14	DMRB Stage 2 Report	DAD	CMM	GAH	EBH
Rev	Rev. Date	Purpose of revision	Drawn	Checked	Rev'd	Apprv'd



Drawing title  
**DMRB STAGE 2  
 NAIRN BYPASS  
 OPTION 2F PLAN & PROFILE  
 CH 29180 TO CH 30710**

Drawing status  
**PRELIMINARY**

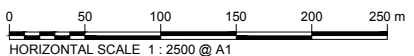
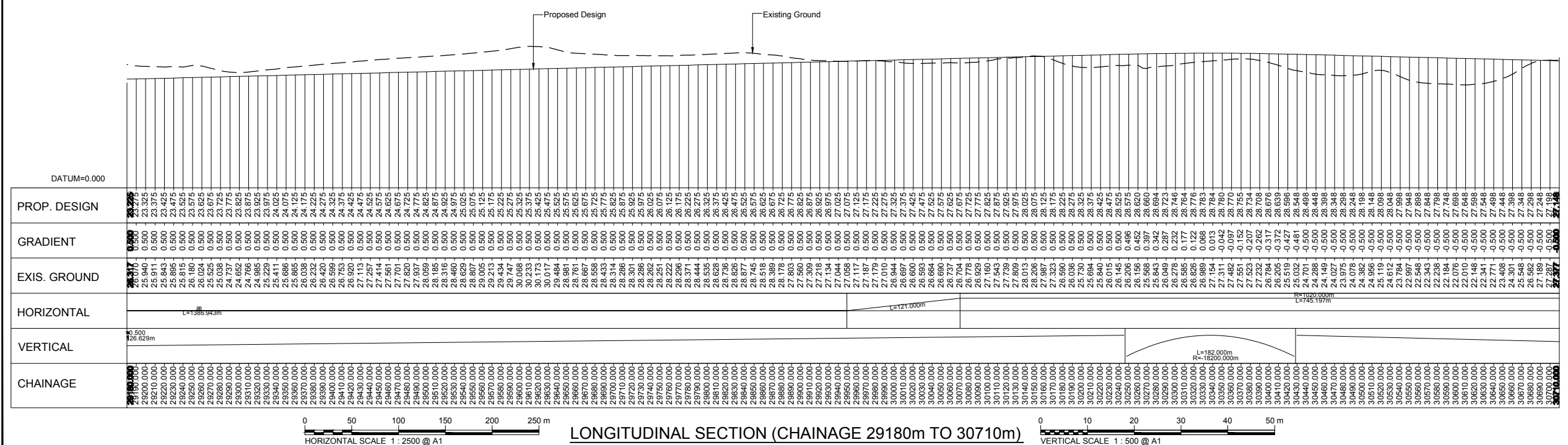
Scale  
 AS SHOWN @ A1 | DO NOT SCALE

Client no.  
 B1557601

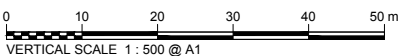
Drawing number  
**B1557601/MLA/2607**

Rev  
**A**

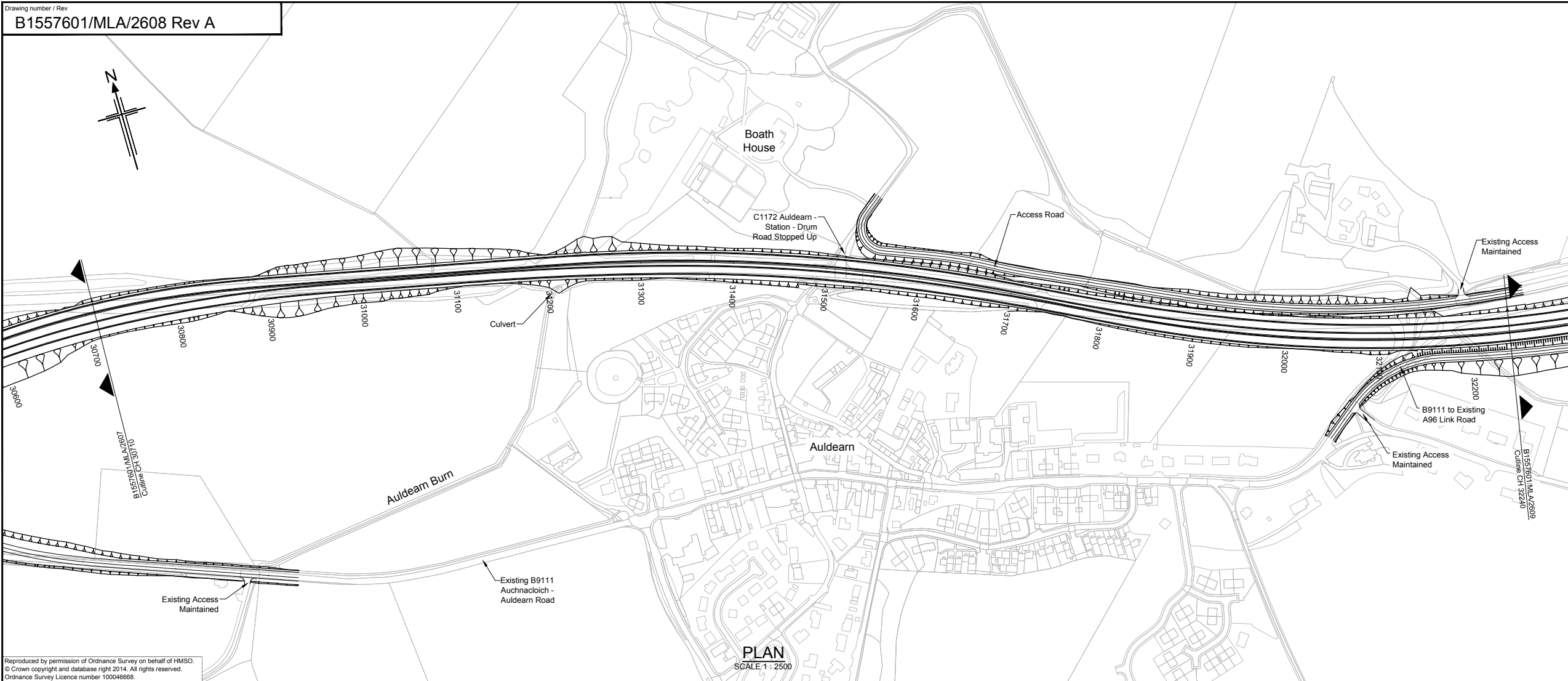
This drawing is not to be used in whole or part other than for the intended purpose and project as defined on this drawing. Refer to the contract for full terms and conditions.



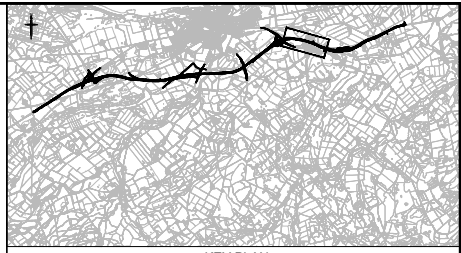
**LONGITUDINAL SECTION (CHAINAGE 29180m TO 30710m)**





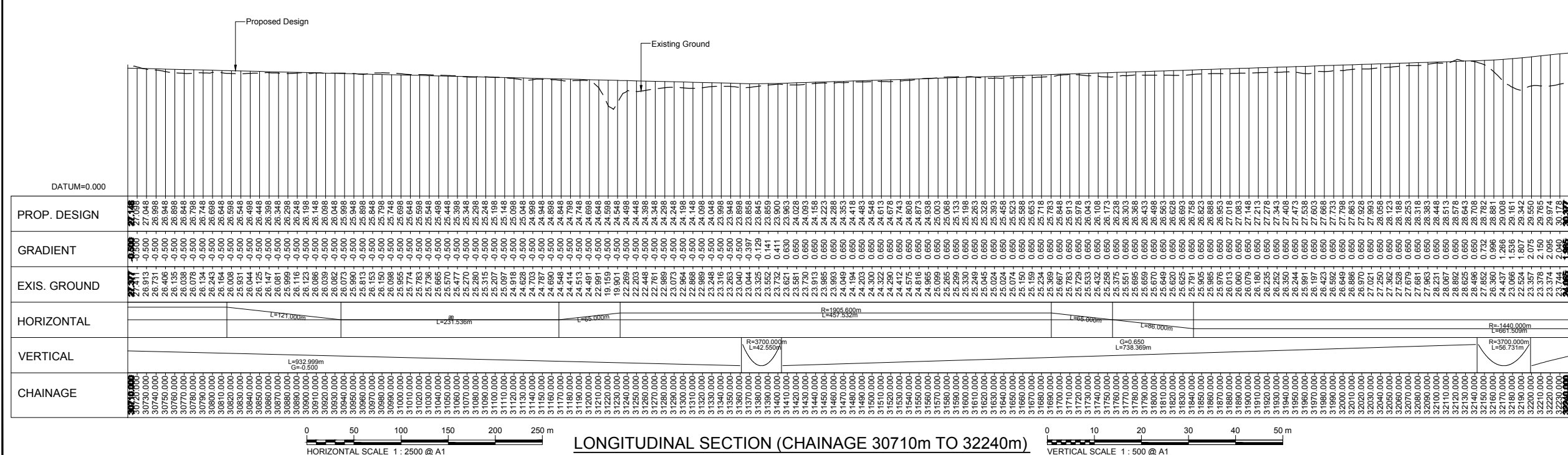


Reproduced by permission of Ordnance Survey on behalf of HMSO.  
 © Crown copyright and database right 2014. All rights reserved.  
 Ordnance Survey Licence number 100046668.



NOTES:  
 1. All dimensions are in metres unless stated otherwise.

This OS Mastermap was obtained in March 2014 and is for illustration purposes only.



CHAINAGE	PROF. DESIGN	GRADIENT	EXIS. GROUND
30710.000	27.458	-0.500	27.417
30720.000	26.913	-0.500	26.913
30730.000	26.913	-0.500	26.913
30740.000	26.913	-0.500	26.913
30750.000	26.913	-0.500	26.913
30760.000	26.913	-0.500	26.913
30770.000	26.913	-0.500	26.913
30780.000	26.913	-0.500	26.913
30790.000	26.913	-0.500	26.913
30800.000	26.913	-0.500	26.913
30810.000	26.913	-0.500	26.913
30820.000	26.913	-0.500	26.913
30830.000	26.913	-0.500	26.913
30840.000	26.913	-0.500	26.913
30850.000	26.913	-0.500	26.913
30860.000	26.913	-0.500	26.913
30870.000	26.913	-0.500	26.913
30880.000	26.913	-0.500	26.913
30890.000	26.913	-0.500	26.913
30900.000	26.913	-0.500	26.913
30910.000	26.913	-0.500	26.913
30920.000	26.913	-0.500	26.913
30930.000	26.913	-0.500	26.913
30940.000	26.913	-0.500	26.913
30950.000	26.913	-0.500	26.913
30960.000	26.913	-0.500	26.913
30970.000	26.913	-0.500	26.913
30980.000	26.913	-0.500	26.913
30990.000	26.913	-0.500	26.913
31000.000	26.913	-0.500	26.913
31010.000	26.913	-0.500	26.913
31020.000	26.913	-0.500	26.913
31030.000	26.913	-0.500	26.913
31040.000	26.913	-0.500	26.913
31050.000	26.913	-0.500	26.913
31060.000	26.913	-0.500	26.913
31070.000	26.913	-0.500	26.913
31080.000	26.913	-0.500	26.913
31090.000	26.913	-0.500	26.913
31100.000	26.913	-0.500	26.913
31110.000	26.913	-0.500	26.913
31120.000	26.913	-0.500	26.913
31130.000	26.913	-0.500	26.913
31140.000	26.913	-0.500	26.913
31150.000	26.913	-0.500	26.913
31160.000	26.913	-0.500	26.913
31170.000	26.913	-0.500	26.913
31180.000	26.913	-0.500	26.913
31190.000	26.913	-0.500	26.913
31200.000	26.913	-0.500	26.913
31210.000	26.913	-0.500	26.913
31220.000	26.913	-0.500	26.913
31230.000	26.913	-0.500	26.913
31240.000	26.913	-0.500	26.913
31250.000	26.913	-0.500	26.913
31260.000	26.913	-0.500	26.913
31270.000	26.913	-0.500	26.913
31280.000	26.913	-0.500	26.913
31290.000	26.913	-0.500	26.913
31300.000	26.913	-0.500	26.913
31310.000	26.913	-0.500	26.913
31320.000	26.913	-0.500	26.913
31330.000	26.913	-0.500	26.913
31340.000	26.913	-0.500	26.913
31350.000	26.913	-0.500	26.913
31360.000	26.913	-0.500	26.913
31370.000	26.913	-0.500	26.913
31380.000	26.913	-0.500	26.913
31390.000	26.913	-0.500	26.913
31400.000	26.913	-0.500	26.913
31410.000	26.913	-0.500	26.913
31420.000	26.913	-0.500	26.913
31430.000	26.913	-0.500	26.913
31440.000	26.913	-0.500	26.913
31450.000	26.913	-0.500	26.913
31460.000	26.913	-0.500	26.913
31470.000	26.913	-0.500	26.913
31480.000	26.913	-0.500	26.913
31490.000	26.913	-0.500	26.913
31500.000	26.913	-0.500	26.913
31510.000	26.913	-0.500	26.913
31520.000	26.913	-0.500	26.913
31530.000	26.913	-0.500	26.913
31540.000	26.913	-0.500	26.913
31550.000	26.913	-0.500	26.913
31560.000	26.913	-0.500	26.913
31570.000	26.913	-0.500	26.913
31580.000	26.913	-0.500	26.913
31590.000	26.913	-0.500	26.913
31600.000	26.913	-0.500	26.913
31610.000	26.913	-0.500	26.913
31620.000	26.913	-0.500	26.913
31630.000	26.913	-0.500	26.913
31640.000	26.913	-0.500	26.913
31650.000	26.913	-0.500	26.913
31660.000	26.913	-0.500	26.913
31670.000	26.913	-0.500	26.913
31680.000	26.913	-0.500	26.913
31690.000	26.913	-0.500	26.913
31700.000	26.913	-0.500	26.913
31710.000	26.913	-0.500	26.913
31720.000	26.913	-0.500	26.913
31730.000	26.913	-0.500	26.913
31740.000	26.913	-0.500	26.913
31750.000	26.913	-0.500	26.913
31760.000	26.913	-0.500	26.913
31770.000	26.913	-0.500	26.913
31780.000	26.913	-0.500	26.913
31790.000	26.913	-0.500	26.913
31800.000	26.913	-0.500	26.913
31810.000	26.913	-0.500	26.913
31820.000	26.913	-0.500	26.913
31830.000	26.913	-0.500	26.913
31840.000	26.913	-0.500	26.913
31850.000	26.913	-0.500	26.913
31860.000	26.913	-0.500	26.913
31870.000	26.913	-0.500	26.913
31880.000	26.913	-0.500	26.913
31890.000	26.913	-0.500	26.913
31900.000	26.913	-0.500	26.913
31910.000	26.913	-0.500	26.913
31920.000	26.913	-0.500	26.913
31930.000	26.913	-0.500	26.913
31940.000	26.913	-0.500	26.913
31950.000	26.913	-0.500	26.913
31960.000	26.913	-0.500	26.913
31970.000	26.913	-0.500	26.913
31980.000	26.913	-0.500	26.913
31990.000	26.913	-0.500	26.913
32000.000	26.913	-0.500	26.913
32010.000	26.913	-0.500	26.913
32020.000	26.913	-0.500	26.913
32030.000	26.913	-0.500	26.913
32040.000	26.913	-0.500	26.913
32050.000	26.913	-0.500	26.913
32060.000	26.913	-0.500	26.913
32070.000	26.913	-0.500	26.913
32080.000	26.913	-0.500	26.913
32090.000	26.913	-0.500	26.913
32100.000	26.913	-0.500	26.913
32110.000	26.913	-0.500	26.913
32120.000	26.913	-0.500	26.913
32130.000	26.913	-0.500	26.913
32140.000	26.913	-0.500	26.913
32150.000	26.913	-0.500	26.913
32160.000	26.913	-0.500	26.913
32170.000	26.913	-0.500	26.913
32180.000	26.913	-0.500	26.913
32190.000	26.913	-0.500	26.913
32200.000	26.913	-0.500	26.913
32210.000	26.913	-0.500	26.913
32220.000	26.913	-0.500	26.913
32230.000	26.913	-0.500	26.913
32240.000	26.913	-0.500	26.913

Rev	Rev. Date	Purpose of revision	Drawn	Checked	Rev'd	Apprv'd
A	08/09/14	DMRB Stage 2 Report	DAD	CMM	GAH	EHB

**JACOBS**  
 95 Bothwell St, Glasgow, G2 7HX  
 Tel: +44(0)141 243 8000 Fax: +44(0)141 226 3109  
 www.jacobs.com

Client  
  
**TRANSPORT SCOTLAND**  
 COMHAIL ALBA

Project  
  
**A96 DUALLING**  
 INVERNESS TO NAIRN  
(incl. A96 to A96)

Drawing title  
**DMRB STAGE 2  
 NAIRN BYPASS  
 OPTION 2F PLAN & PROFILE  
 CH 30710 TO CH 32240**

Drawing status  
**PRELIMINARY**

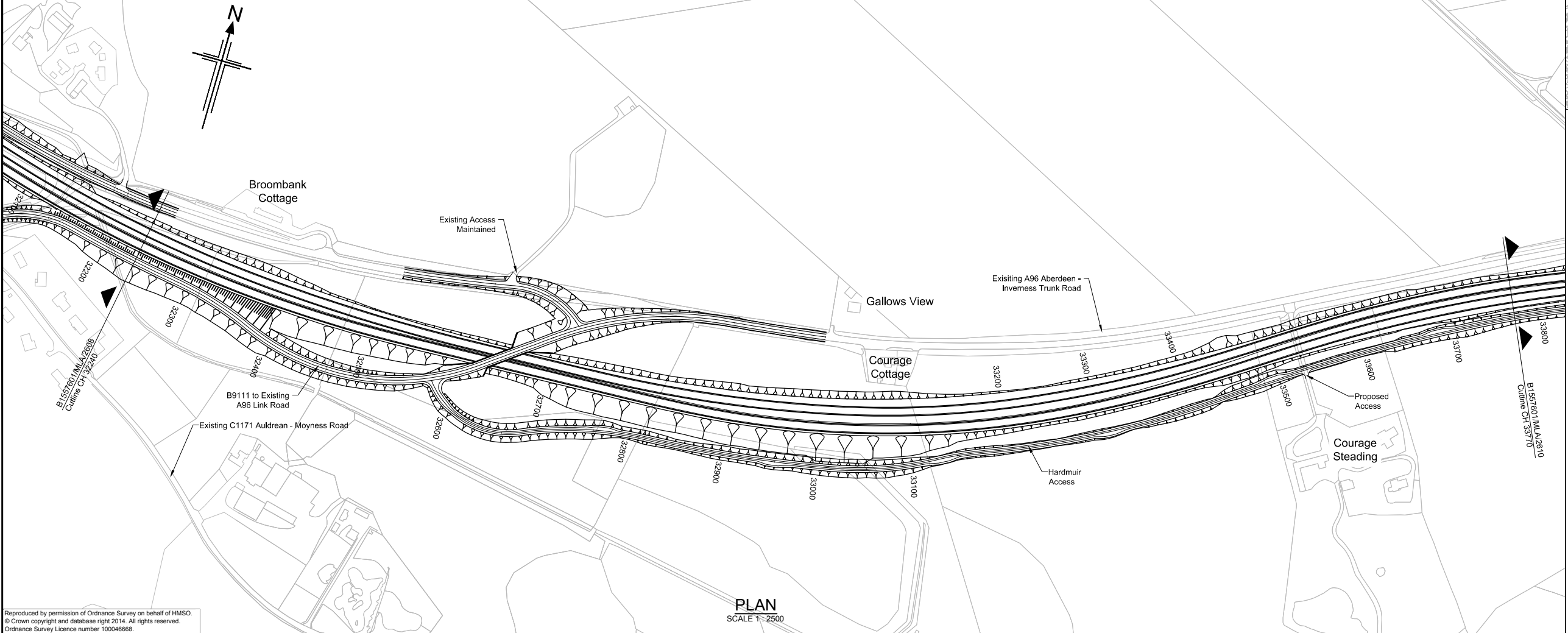
Scale  
 AS SHOWN @ A1      DO NOT SCALE

Client no.  
 B1557601

Drawing number  
**B1557601/MLA/2608**

Rev  
**A**

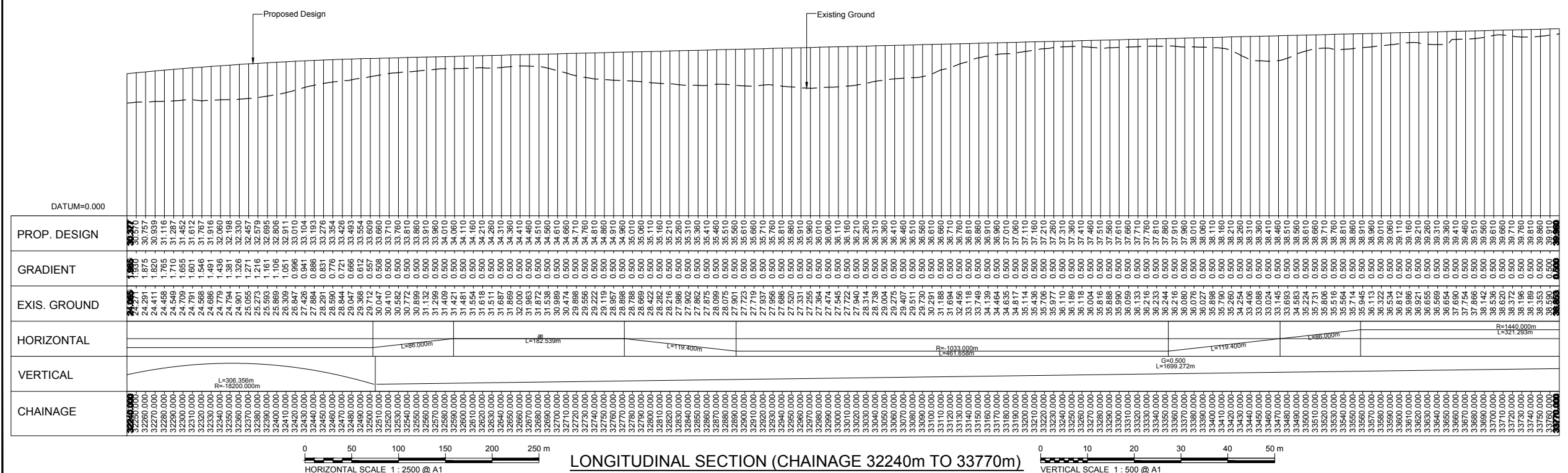
This drawing is not to be used in whole or part other than for the intended purpose and project as defined on this drawing. Refer to the contract for full terms and conditions.



NOTES:  
 1. All dimensions are in metres unless stated otherwise.

Reproduced by permission of Ordnance Survey on behalf of HMSO.  
 © Crown copyright and database right 2014. All rights reserved.  
 Ordnance Survey Licence number 100046668.

This OS Mastermap was obtained in March 2014 and is for illustration purposes only.



A	08/09/14	DMRB Stage 2 Report	DAD	CMM	GAH	EHB
Rev	Rev. Date	Purpose of revision	Drawn	Checked	Rev'd	Apprv'd

**JACOBS**  
 95 Bothwell St, Glasgow, G2 7HX  
 Tel: +44(0)141 243 8000 Fax: +44(0)141 226 3109  
 www.jacobs.com

Client  
  
 TRANSPORT SCOTLAND  
 COMHAL ALBA

Project  
  
**A96 DUALLING**  
 INVERNESS TO NAIRN  
 (incl. A96 bypass)

Drawing title  
**DMRB STAGE 2  
 NAIRN BYPASS  
 OPTION 2F PLAN & PROFILE  
 CH 32240 TO CH 33770**

Drawing status  
**PRELIMINARY**

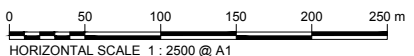
Scale  
 AS SHOWN @ A1 | DO NOT SCALE

Jacobs No.  
 B1557601

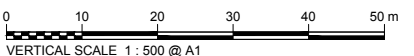
Drawing number  
**B1557601/MLA/2609**

Rev  
**A**

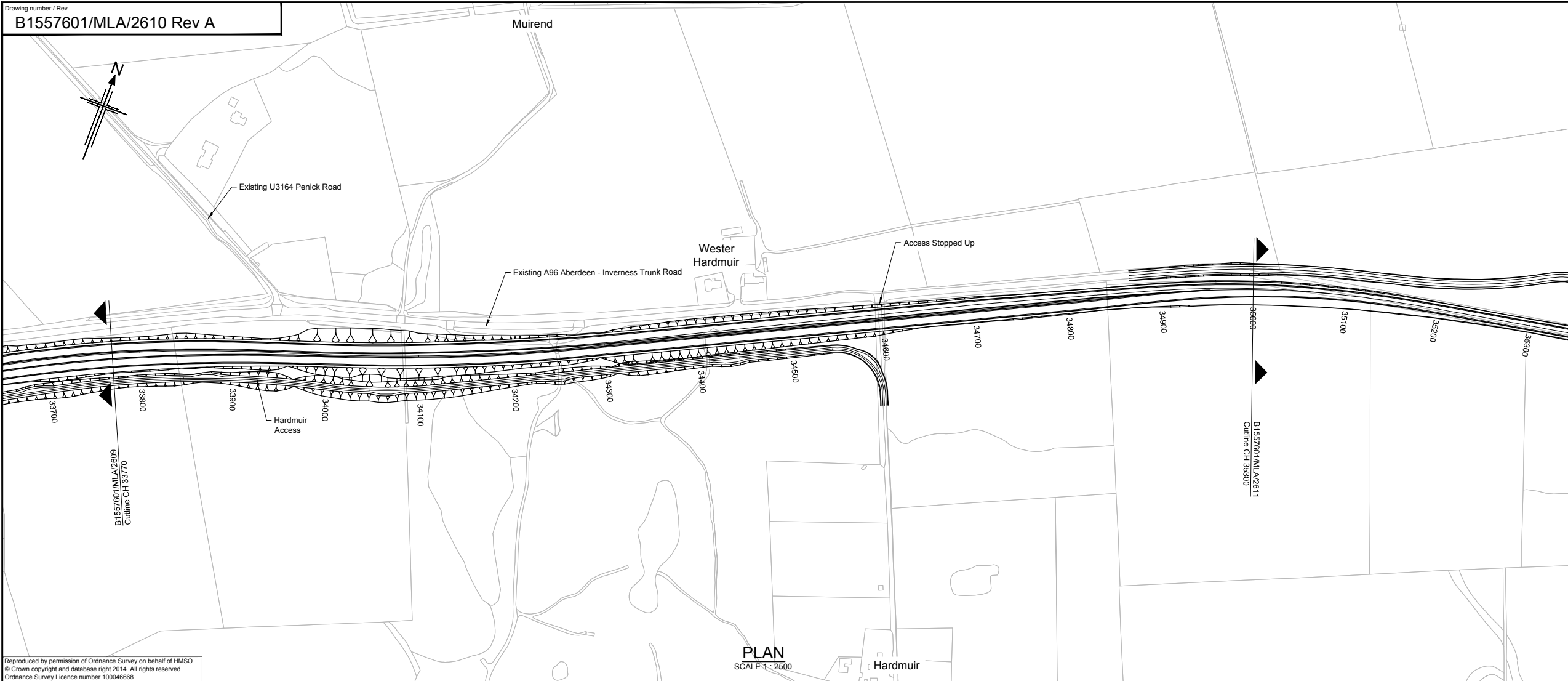
This drawing is not to be used in whole or part other than for the intended purpose and project as defined on this drawing. Refer to the contract for full terms and conditions.



**LONGITUDINAL SECTION (CHAINAGE 32240m TO 33770m)**





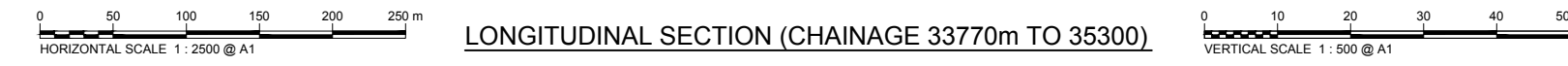
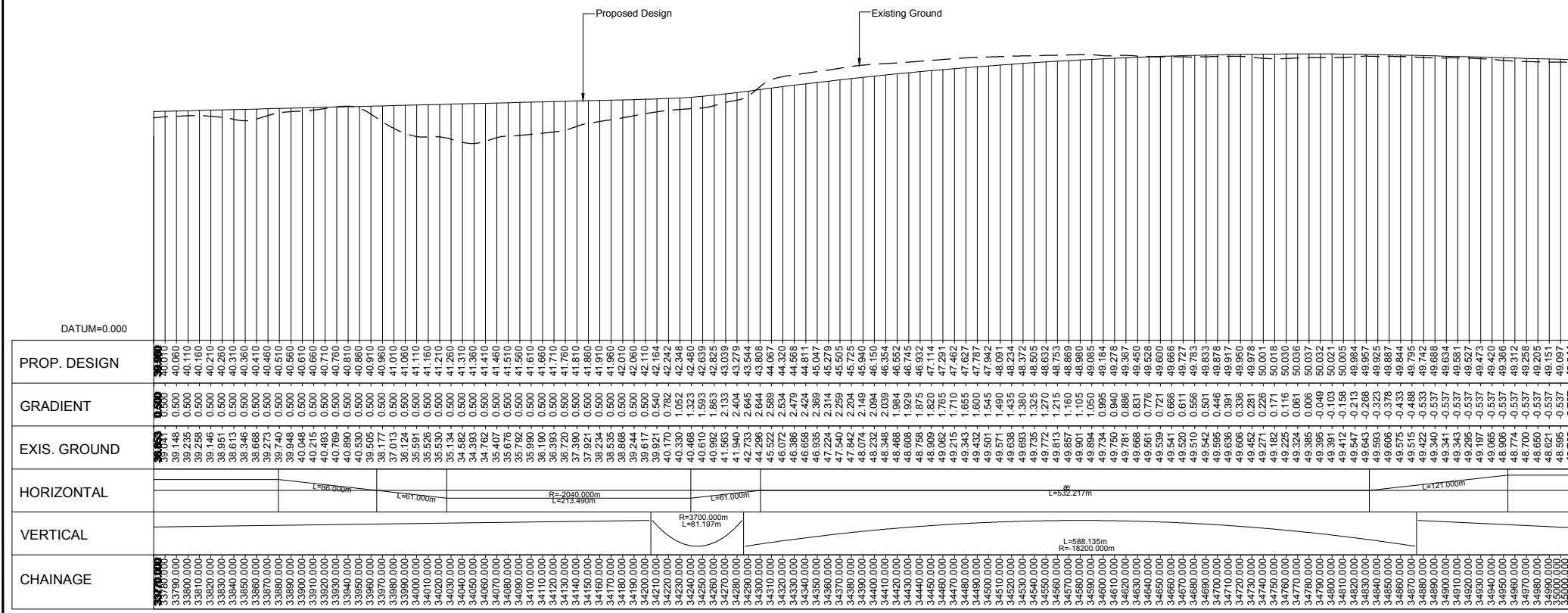


Reproduced by permission of Ordnance Survey on behalf of HMSO.  
 © Crown copyright and database right 2014. All rights reserved.  
 Ordnance Survey Licence number 100046668.



NOTES:  
 1. All dimensions are in metres unless stated otherwise.

This OS Mastermap was obtained in March 2014 and is for illustration purposes only.



LONGITUDINAL SECTION (CHAINAGE 33770m TO 35300)

A	08/09/14	DMRB Stage 2 Report	DAD	CMM	GAH	EHB
Rev	Rev. Date	Purpose of revision	Drawn	Checked	Rev'd	Apprv'd

**JACOBS**  
 95 Bothwell St, Glasgow, G2 7HX  
 Tel: +44(0)141 243 8000 Fax: +44(0)141 226 3109  
 www.jacobs.com

Client

TRANSPORT SCOTLAND  
 COMHAL ALBA

Project

A96  
 DUALLING  
 INVERNESS TO NAIRN  
 (incl. Malm Gypsies)

Drawing title  
**DMRB STAGE 2  
 NAIRN BYPASS  
 OPTION 2F PLAN & PROFILE  
 CH 33770 TO CH 35000**

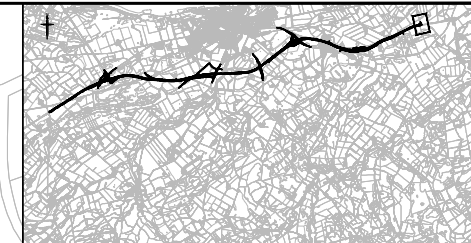
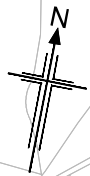
Drawing status  
**PRELIMINARY**

Scale	AS SHOWN @ A1	DO NOT SCALE
Jacobs No.	B1557601	

Drawing number  
**B1557601/MLA/2610**

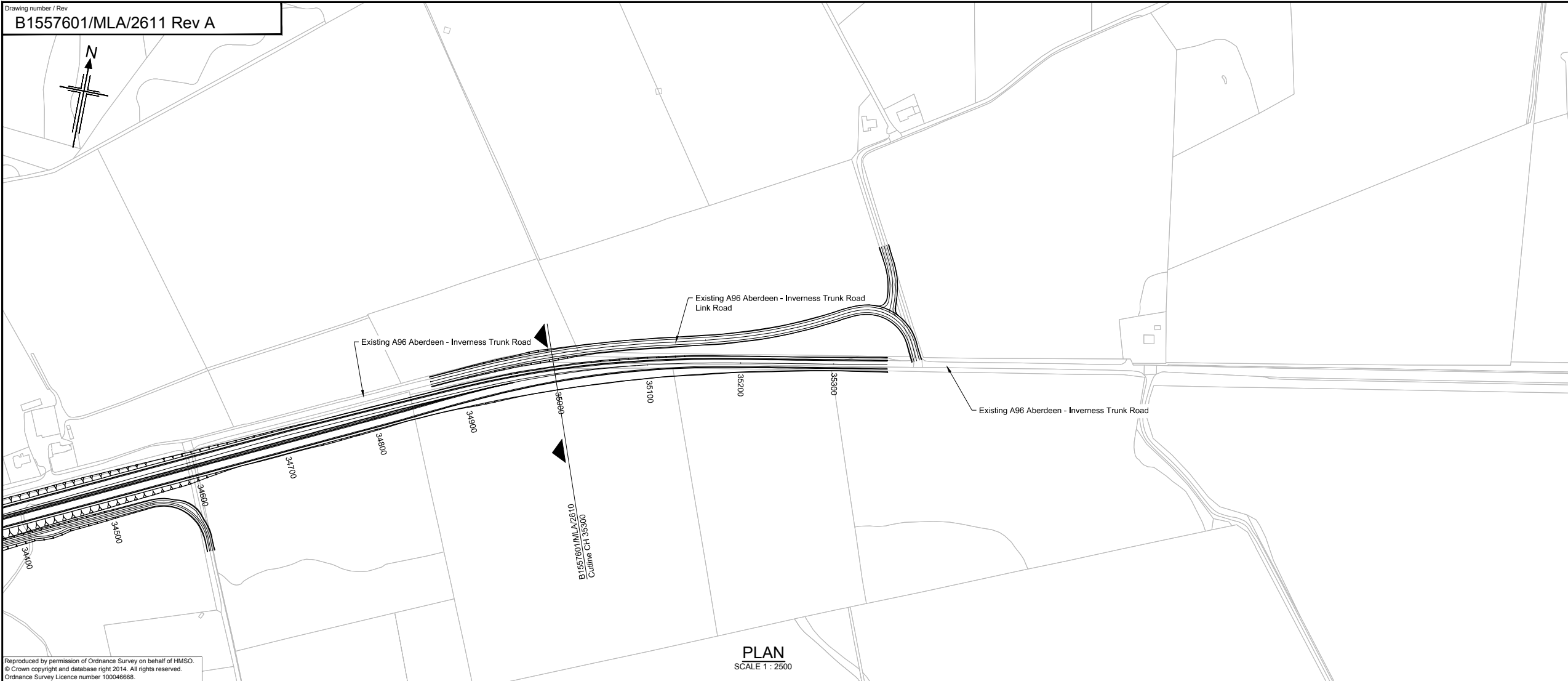
Rev  
**A**

This drawing is not to be used in whole or part other than for the intended purpose and project as defined on this drawing. Refer to the contract for full terms and conditions.



KEY PLAN

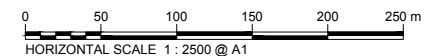
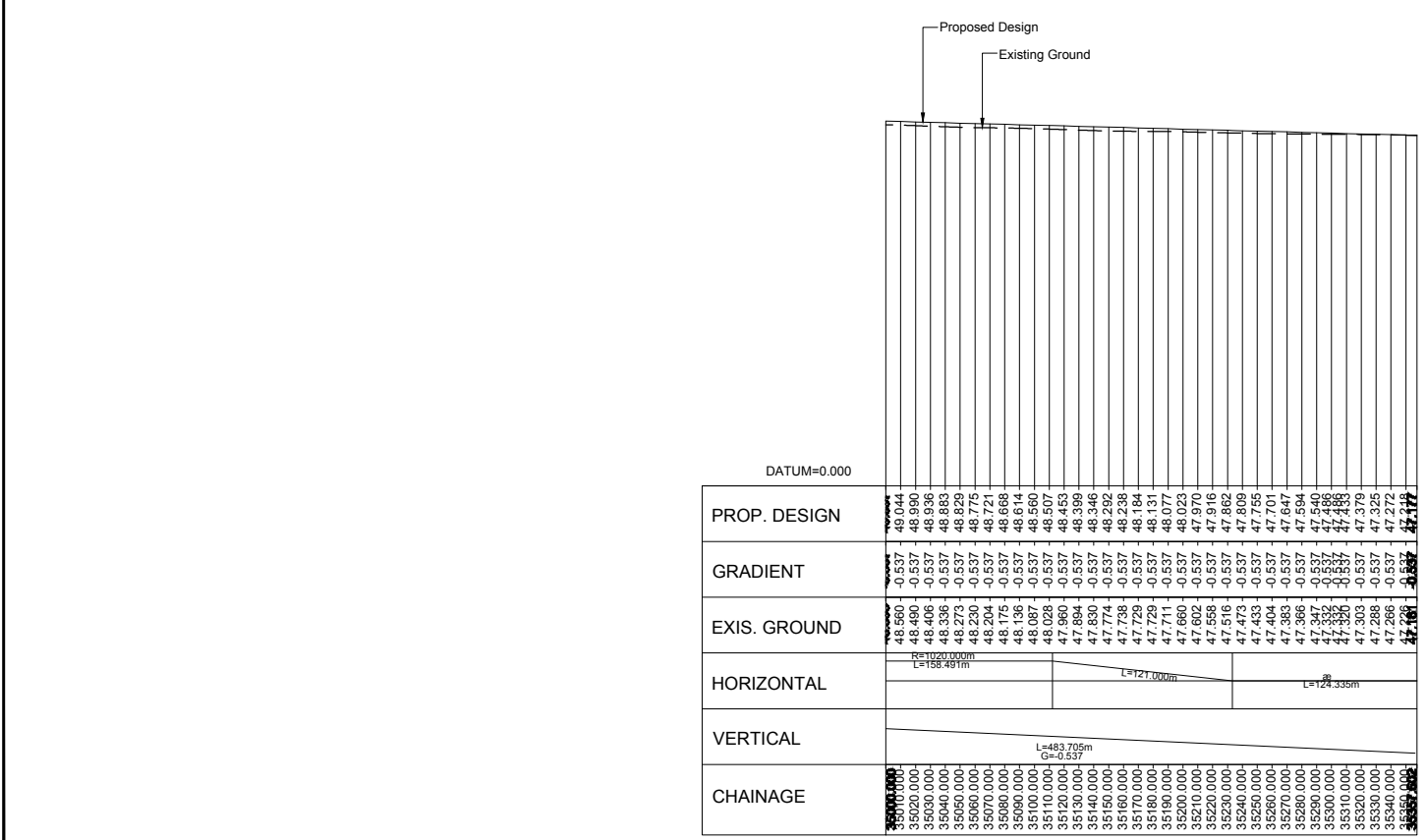
NOTES:  
 1. All dimensions are in metres unless stated otherwise.



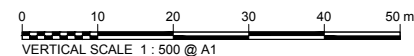
PLAN  
 SCALE 1 : 2500

Reproduced by permission of Ordnance Survey on behalf of HMSO.  
 © Crown copyright and database right 2014. All rights reserved.  
 Ordnance Survey Licence number 100046668.

This OS Mastermap was obtained in March 2014 and is for illustration purposes only.



LONGITUDINAL SECTION (CHAINAGE 35300m TO 35357.602)



A	08/09/14	DMRB Stage 2 Report	DAD	CMM	GAH	EHB
Rev	Rev. Date	Purpose of revision	Drawn	Checked	Rev'd	Appr'd

**JACOBS**  
 95 Bothwell St, Glasgow, G2 7HX  
 Tel: +44(0)141 243 8000 Fax: +44(0)141 226 3109  
 www.jacobs.com

Client

TRANSPORT SCOTLAND  
 COMHAL ALBA

Project

A96  
 DUALLING  
 INVERNESS TO NAIRN  
 (incl. Millin bypass)

Drawing title  
**DMRB STAGE 2  
 NAIRN BYPASS  
 OPTION 2F PLAN & PROFILE  
 CH 35000 TO CH 35357.602**

Drawing status  
**PRELIMINARY**

Scale  
 AS SHOWN @ A1 | DO NOT SCALE

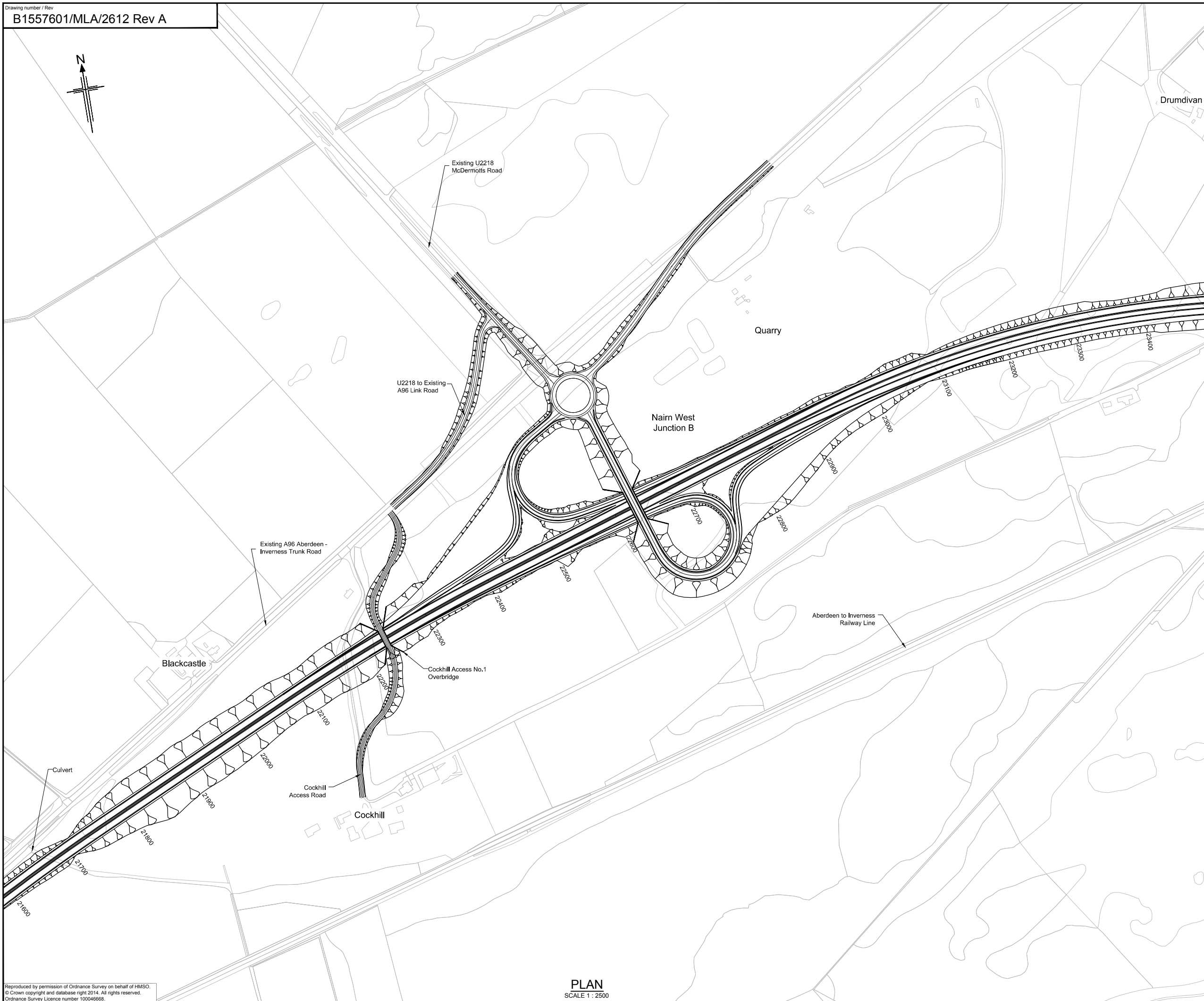
Jacobs No. B1557601

Drawing number  
**B1557601/MLA/2611**

Rev  
**A**

This drawing is not to be used in whole or part other than for the intended purpose and project as defined on this drawing. Refer to the contract for full terms and conditions.





KEY PLAN:

**NOTES:**

- All dimensions are in metres unless stated otherwise.

This OS Mastermap was obtained in March 2014 and is for illustration purposes only.

Rev	Rev. Date	Purpose of revision	Drawn	Checked	Rev'd	Appr'd
A	08/09/14	DMRB Stage 2 Report	DAD	CMM	GAH	EHB

**JACOBS**

95 Bothwell St, Glasgow, G2 7HX  
 Tel: +44(0)141 243 8000 Fax: +44(0)141 226 3109  
 www.jacobs.com

Client



**TRANSPORT SCOTLAND**  
 COMHAIL ALBA

Project



Drawing title

**DMRB STAGE 2  
 NAIRN BYPASS  
 NAIRN WEST JUNCTION B  
 OPTION 2F**

Drawing status

PRELIMINARY

Scale

AS SHOWN @ A1 DO NOT SCALE

Jacobs No.

B1557601

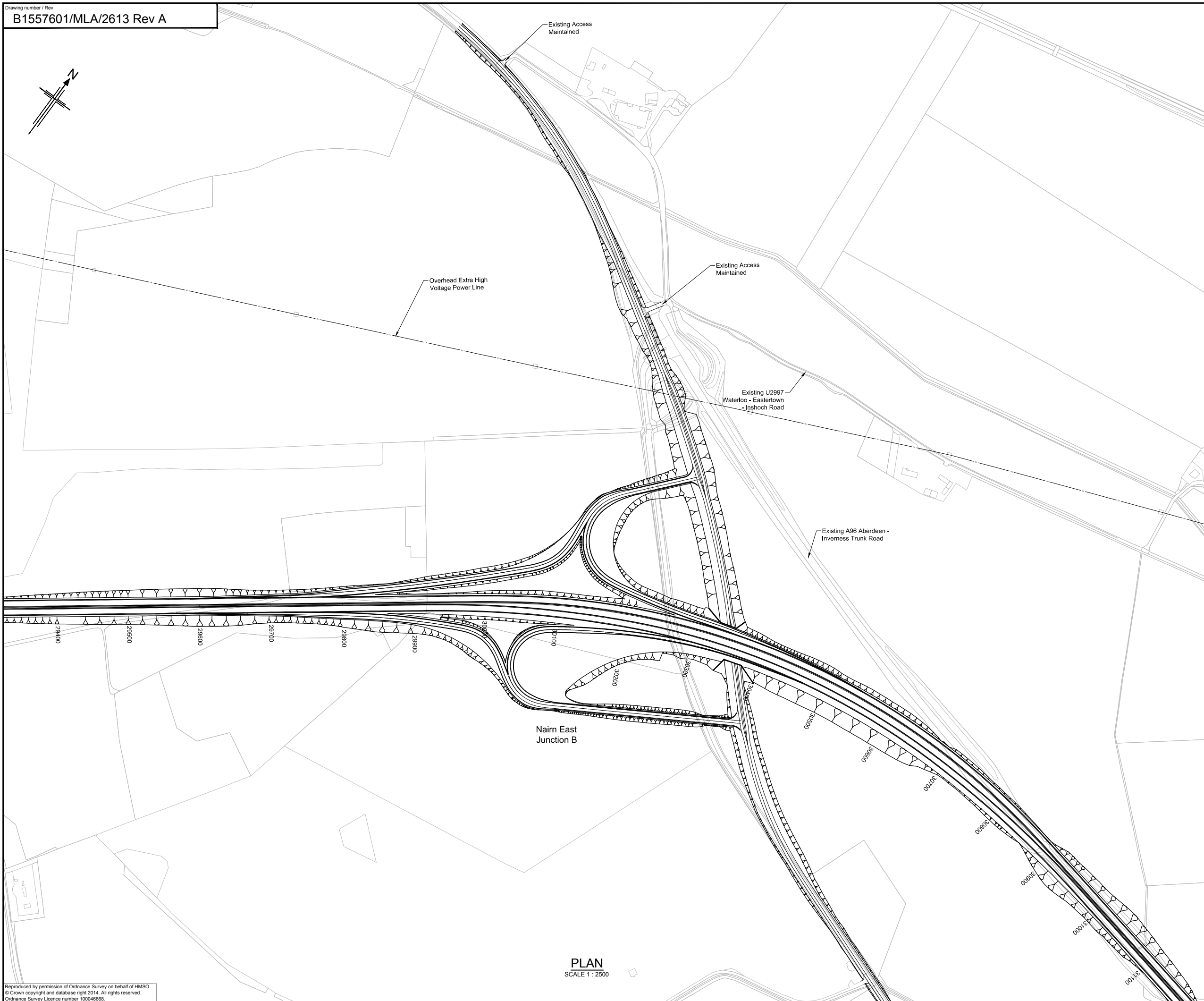
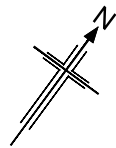
Client no.

Drawing number

B1557601/MLA/2612

Rev

A



KEY PLAN

NOTES:  
 1. All dimensions are in metres unless stated otherwise.

This OS Mastermap was obtained in March 2014 and is for illustration purposes only.

Rev	Rev. Date	Purpose of revision	Drawn	Checked	Rev'd	Appr'd
A	08/09/14	DMRB Stage 2 Report	DAD	CMM	GAH	EHB

**JACOBS**  
 95 Bothwell St, Glasgow, G2 7HX  
 Tel: +44(0)141 243 8000 Fax: +44(0)141 226 3109  
 www.jacobs.com

Client

TRANSPORT SCOTLAND  
 COMH-DHAL ALBA

Project

**A96**  
 DUALLING  
 INVERNESS TO NAIRN  
 (incl. Nairn Bypass)

Drawing title  
**DMRB STAGE 2  
 NAIRN BYPASS  
 NAIRN EAST JUNCTION B  
 OPTION 2F**

Drawing status  
 PRELIMINARY

Scale  
 AS SHOWN @ A1 | DO NOT SCALE

Jacobs No.  
 B1557601

Client no.

Drawing number  
**B1557601/MLA/2613**

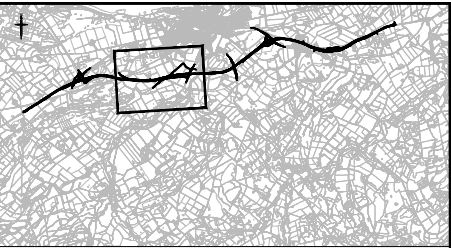
Rev  
**A**

This drawing is not to be used in whole or part other than for the intended purpose and project as defined on this drawing. Refer to the contract for full terms and conditions.

Reproduced by permission of Ordnance Survey on behalf of HMSO.  
 © Crown copyright and database right 2014. All rights reserved.  
 Ordnance Survey Licence number 100046668.

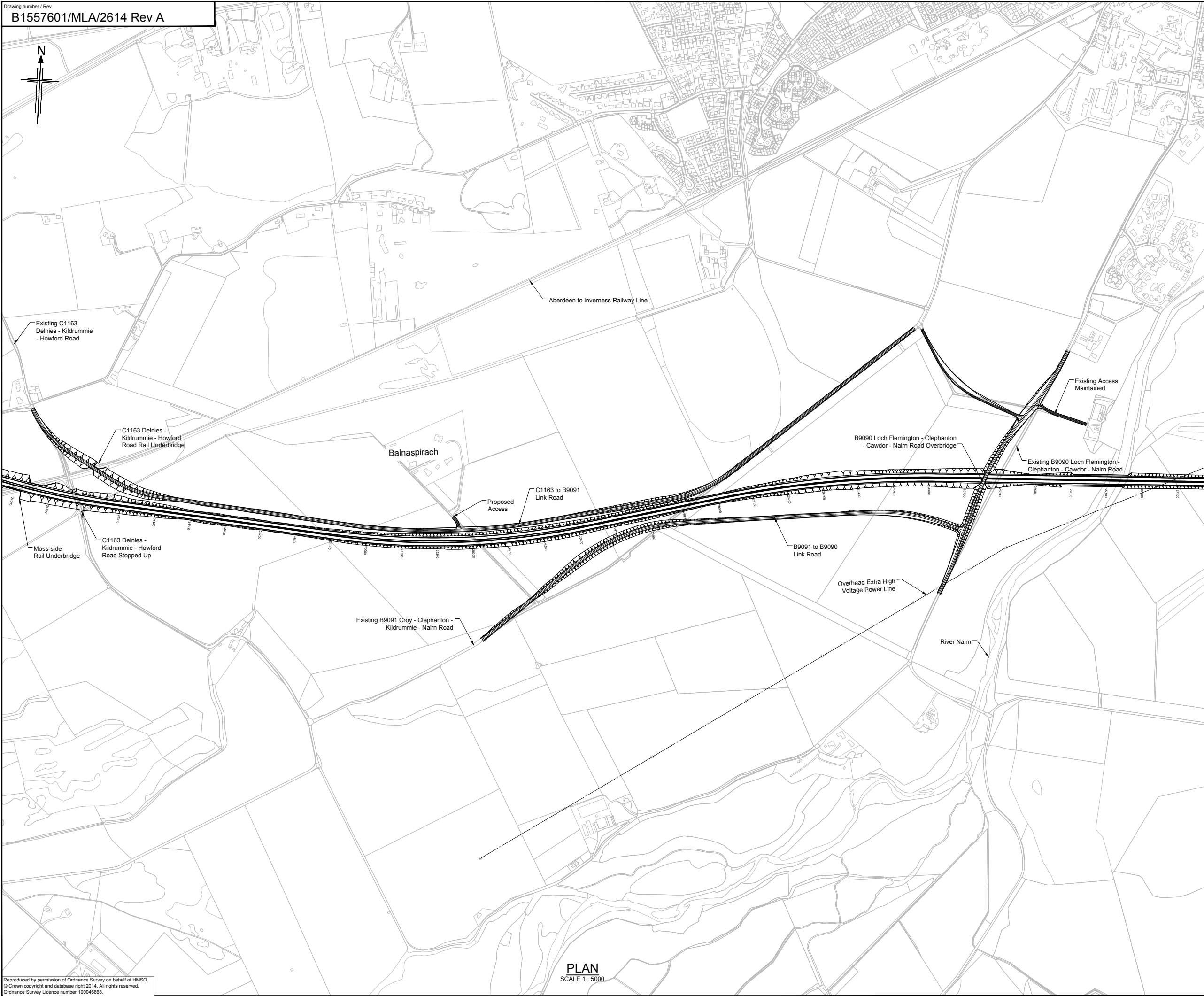
PLAN  
 SCALE 1 : 2500





KEY PLAN

- NOTES:**
- All dimensions are in metres unless stated otherwise.



This OS Mastermap was obtained in March 2014 and is for illustration purposes only.

Rev	Rev. Date	Purpose of revision	Drawn	Checked	Rev'd	Apprv'd
A	08/09/14	DMRB Stage 2 Report	DAD	CMM	GAH	EHB

**JACOBS**  
 95 Bothwell St, Glasgow, G2 7HX  
 Tel: +44(0)141 243 8000 Fax: +44(0)141 226 3109  
 www.jacobs.com



**DMRB STAGE 2  
 NAIRN BYPASS  
 SIDE ROAD B9090 AND B9091  
 OPTION 2F**

Drawing status	PRELIMINARY	
Scale	AS SHOWN @ A1	DO NOT SCALE
Jacobs No.	B1557601	
Client no.		
Drawing number	B1557601/MLA/2614	Rev A

Reproduced by permission of Ordnance Survey on behalf of HMSO.  
 © Crown copyright and database right 2014. All rights reserved.  
 Ordnance Survey Licence number 100046668.

**PLAN**  
 SCALE 1 : 5000

This drawing is not to be used in whole or part other than for the intended purpose and project as defined on this drawing. Refer to the contract for full terms and conditions.