

Legend

- Proposed Scheme (as per Draft Orders)
- SUDS (e.g Basin or Pond)*
- 50m Study Area
- 100m Study Area
- Desk Study Roost

Bat Roost Potential - Tree (BT)

- Category 1* Trees
- Category 1 Trees
- Category 2 Trees
- Category 3 Trees

Bat Roost Potential - Building (BB)

- Roost
- Moderate
- Negligible
- High
- Low

Bat Roost Potential - Structure (BS)

- High
- Low
- Moderate
- Negligible

Bat Habitat Value - Woodland Survey (BW)

- High
- Moderate
- Low

* Actual shape of pond/basin will be subject to detailed design

0	NOV 2016	ES Publication	HM	JF	PG	ENG
Rev.	Rev. Date	Purpose of revision	Orig/Dwn	Checked	Rev'd	Apprv'd

JACOBS
 65 Bedford Street, Glasgow, G2 7NK, UK
 Tel: +44(0)141 243 8000 Fax: +44(0)141 226 3109
 www.jacobs.com

Client

 TRANSPORT SCOTLAND
 COMH-DHAIL ALBA

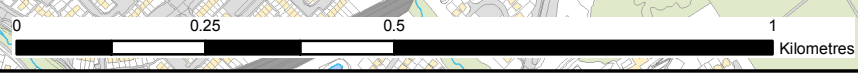
Project

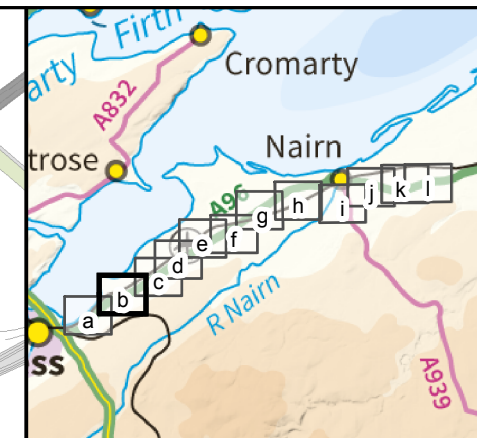
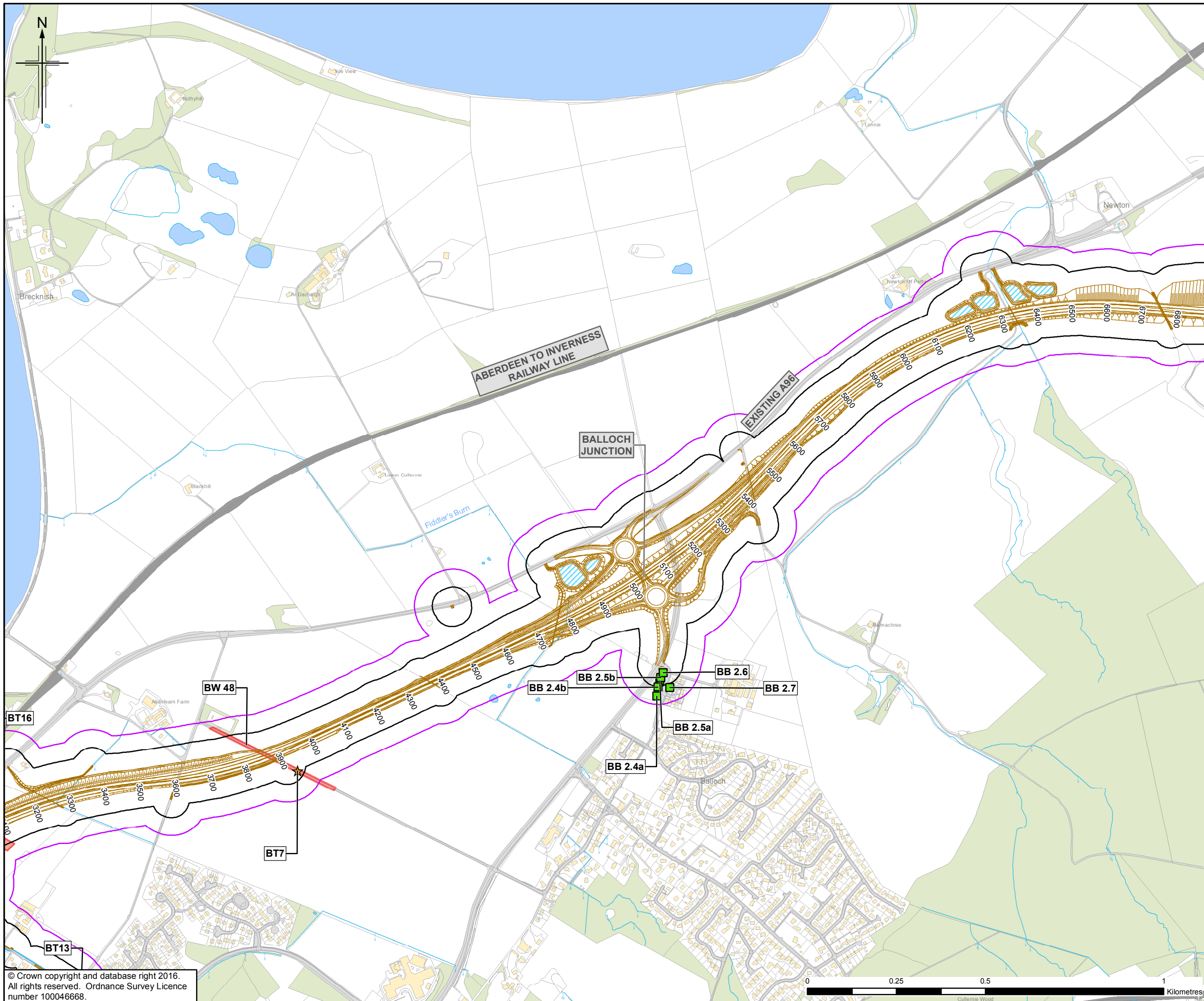
A96
 DUALLING
 INVERNESS TO NAIRN
 (incl. Nairn Bypass)

Drawing title
Figure 11.3a
Environmental Statement
Bat Habitat Assessment
 Sheet 1 of 12

Drawing Status: FINAL
 Scale: 1:10,000 @ A3 DO NOT SCALE
 Jacobs No. B2103500
 BIM No.
 Drawing number: B2103500/EN/EIA/DR/1103a Rev 0

This drawing is not to be used in whole or part other than for the intended purpose and project as defined on this drawing. Refer to the contract for full terms and conditions.





- Legend**
- Proposed Scheme (as per Draft Orders)
 - SUDS (e.g Basin or Pond)*
 - 50m Study Area
 - 100m Study Area
 - Desk Study Roost
- Bat Roost Potential - Tree (BT)**
- ★ Category 1* Trees
 - ★ Category 1 Trees
 - ★ Category 2 Trees
 - ★ Category 3 Trees
- Bat Roost Potential - Building (BB)**
- Roost
 - Moderate
 - Negligible
 - High
 - Low
- Bat Roost Potential - Structure (BS)**
- ▲ High
 - ▲ Moderate
 - ▲ Low
 - ▲ Negligible
- Bat Habitat Value - Woodland Survey (BW)**
- High
 - Moderate
 - Low

* Actual shape of pond/basin will be subject to detailed design

Rev.	Rev. Date	ES Position	HM	JF	PG	ENG
0	NOV 2016	ES Position	HM	JF	PG	ENG
		Purpose of revision	Orig/Dwn	Checkd	Rev'd	Apprv'd

JACOBS
 16 Bedford Street, Glasgow, G2 7NK, UK
 Tel: +44(0)141 243 8000 Fax: +44(0)141 228 3109
 www.jacobs.com

Client

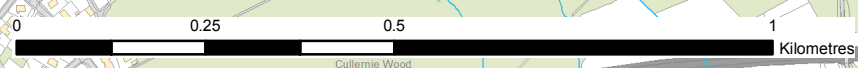
 TRANSPORT SCOTLAND
 COMHDAIL ALBA

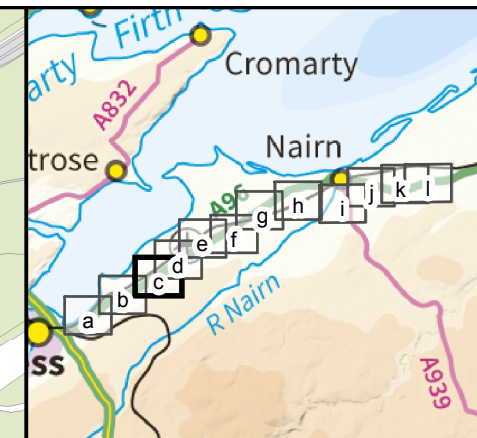
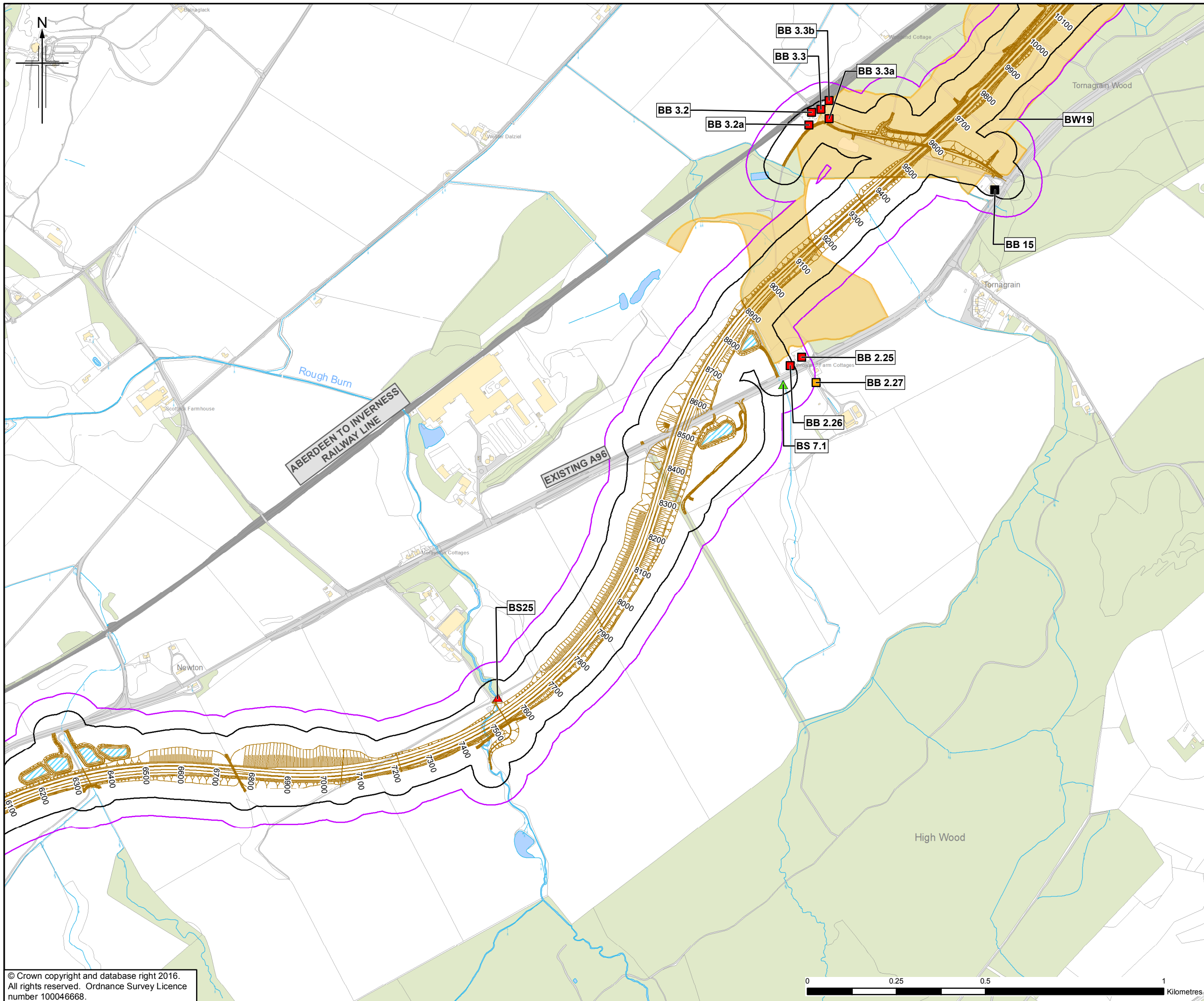
Project

A96
 DUALLING
 INVERNESS TO NAIRN
 (incl. Nairn Bypass)

Drawing title
Figure 11.3b
Environmental Statement
Bat Habitat Assessment

Drawing Status	FINAL		Sheet 2 of 12
Scale	1:10,000 @ A3	DO NOT SCALE	
Jacobs No.	B2103500		
BIM No.			
Drawing number	B2103500/EN/EIA/DR/1103b	Rev	0





- Legend**
- Proposed Scheme (as per Draft Orders)
 - SUDS (e.g Basin or Pond)*
 - 50m Study Area
 - 100m Study Area
 - Desk Study Roost
 - Bat Roost Potential - Tree (BT)**
 - Category 1* Trees
 - Category 1 Trees
 - Category 2 Trees
 - Category 3 Trees
 - Bat Roost Potential - Building (BB)**
 - Roost
 - Moderate
 - Negligible
 - High
 - Low
 - Bat Roost Potential - Structure (BS)**
 - High
 - Low
 - Moderate
 - Negligible
 - Bat Habitat Value - Woodland Survey (BW)**
 - High
 - Moderate
 - Low

* Actual shape of pond/basin will be subject to detailed design

Rev.	Rev. Date	Purpose of revision	Orig/Dwn	Checkd/Rev'd	Apprv'd	
0	NOV 2016	ES Publication	HM	JF	PG	ENG

JACOBS
 66 Biddulph Street, Glasgow, G2 7NK, UK
 Tel: +44(0)141 243 8000 Fax: +44(0)141 226 3109
 www.jacobs.com

Client

 TRANSPORT SCOTLAND
 COMH-DHAIL ALBA

Project

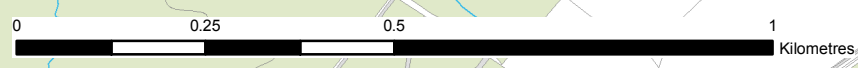
A96
 DUALLING
 INVERNESS TO NAIRN
 (incl. Nairn Bypass)

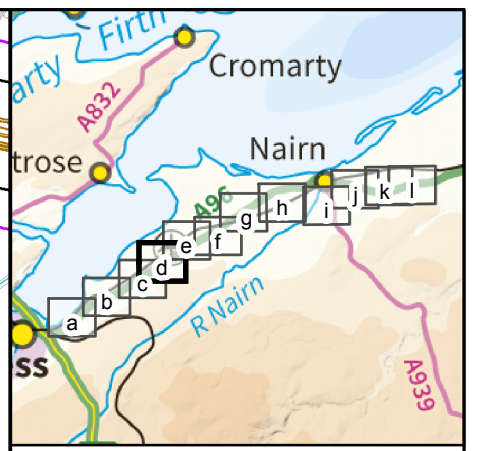
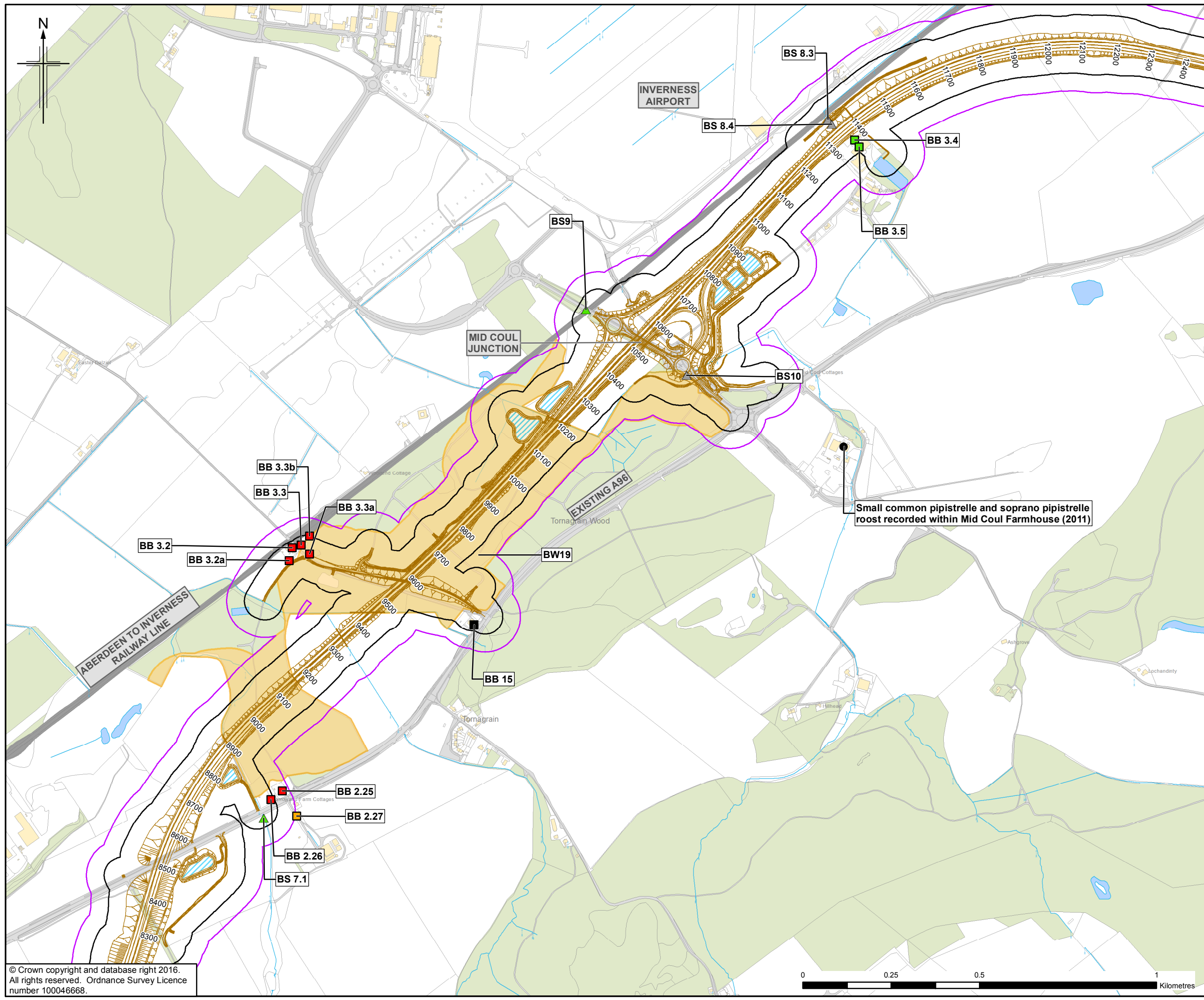
Drawing title
Figure 11.3c
Environmental Statement
Bat Habitat Assessment
 Sheet 3 of 12

Drawing Status	FINAL		
Scale	1:10,000	@ A3	DO NOT SCALE
Jacobs No.	B2103500		
BIM No.			
Drawing number	B2103500/EN/EIA/DR/1103c	Rev	0

This drawing is not to be used in whole or part other than for the intended purpose and project as defined on this drawing. Refer to the contract for full terms and conditions.

© Crown copyright and database right 2016.
 All rights reserved. Ordnance Survey Licence number 100046668.





- Legend**
- Proposed Scheme (as per Draft Orders)
 - SUDS (e.g Basin or Pond)*
 - 50m Study Area
 - 100m Study Area
 - Desk Study Roost
 - Bat Roost Potential - Tree (BT)**
 - Category 1* Trees
 - Category 1 Trees
 - Category 2 Trees
 - Category 3 Trees
 - Bat Roost Potential - Building (BB)**
 - Roost
 - Moderate
 - Negligible
 - High
 - Low
 - Bat Roost Potential - Structure (BS)**
 - High
 - Low
 - Moderate
 - Negligible
 - Bat Habitat Value - Woodland Survey (BW)**
 - High
 - Moderate
 - Low

Small common pipistrelle and soprano pipistrelle roost recorded within Mid Coul Farmhouse (2011)

* Actual shape of pond/basin will be subject to detailed design

0	NOV 2016	ES Publication	HM	JF	PG	ENG
Rev.	Rev. Date	Purpose of revision	Orig/Dwn	Checkd	Rev'd	Apprv'd

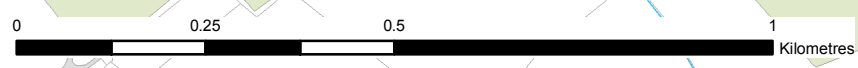
JACOBS
 66 Bellfield Street, Glasgow, G2 7NK, UK
 Tel: +44(0)141 243 8000 Fax: +44(0)141 226 3109
 www.jacobs.com

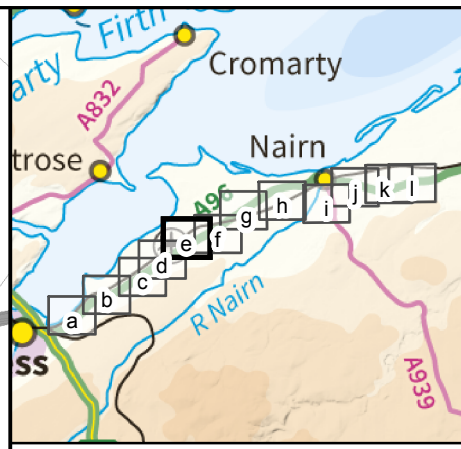
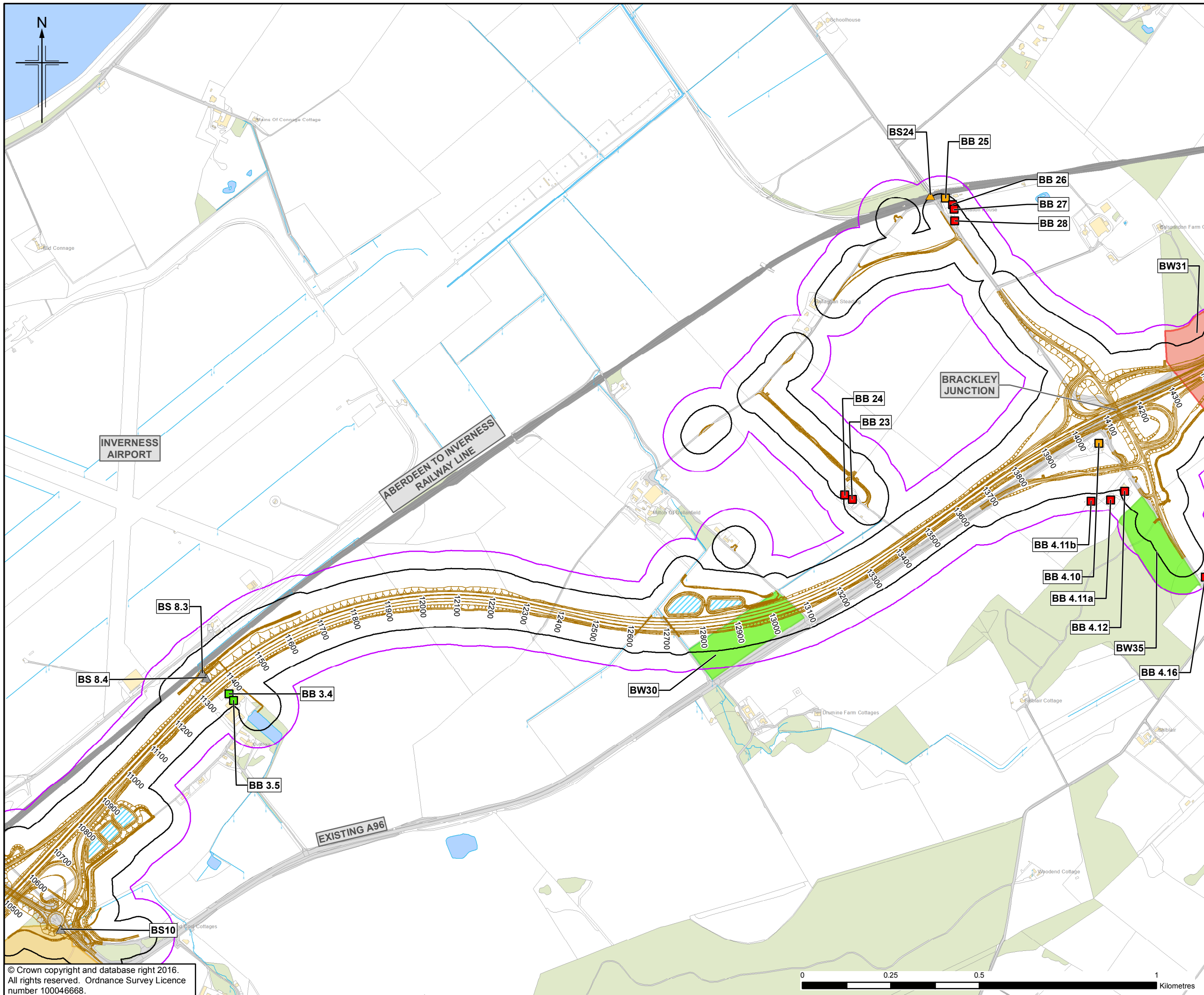


Drawing title
Figure 11.3d
Environmental Statement
Bat Habitat Assessment
 Sheet 4 of 12

Drawing Status	FINAL	
Scale	1:10,000 @ A3	DO NOT SCALE
Jacobs No.	B2103500	
BIM No.		
Drawing number	B2103500/EN/EIA/DR/1103d	Rev 0

This drawing is not to be used in whole or part other than for the intended purpose and project as defined on this drawing. Refer to the contract for full terms and conditions.





Legend

- Proposed Scheme (as per Draft Orders)
- SUDS (e.g Basin or Pond)*
- 50m Study Area
- 100m Study Area
- Desk Study Roost
- Bat Roost Potential - Tree (BT)**
 - Category 1* Trees
 - Category 1 Trees
 - Category 2 Trees
 - Category 3 Trees
- Bat Roost Potential - Building (BB)**
 - Roost
 - Moderate
 - Negligible
 - High
 - Low
- Bat Roost Potential - Structure (BS)**
 - High
 - Low
 - Moderate
 - Negligible
- Bat Habitat Value - Woodland Survey (BW)**
 - High
 - Moderate
 - Low

* Actual shape of pond/basin will be subject to detailed design

0	NOV 2016	ES Position	HM	JF	PG	ENG
Rev.	Rev. Date	Purpose of revision	Orig/Dwn	Checkd	Rev'd	Apprv'd

JACOBS
 66 Bonhill Street, Glasgow, G2 7NK, UK
 Tel: +44(0)141 243 8000 Fax: +44(0)141 226 3109
 www.jacobs.com

Client

 TRANSPORT SCOTLAND
 COMH-DHAIL ALBA

Project

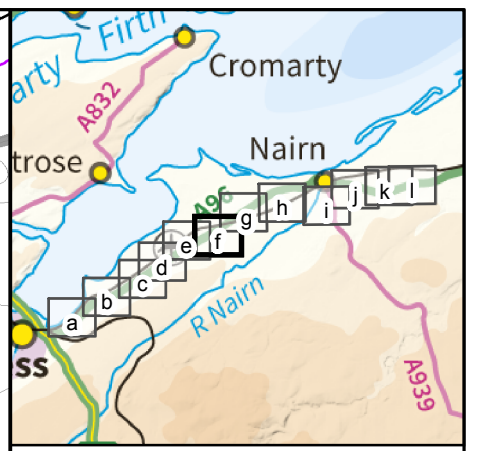
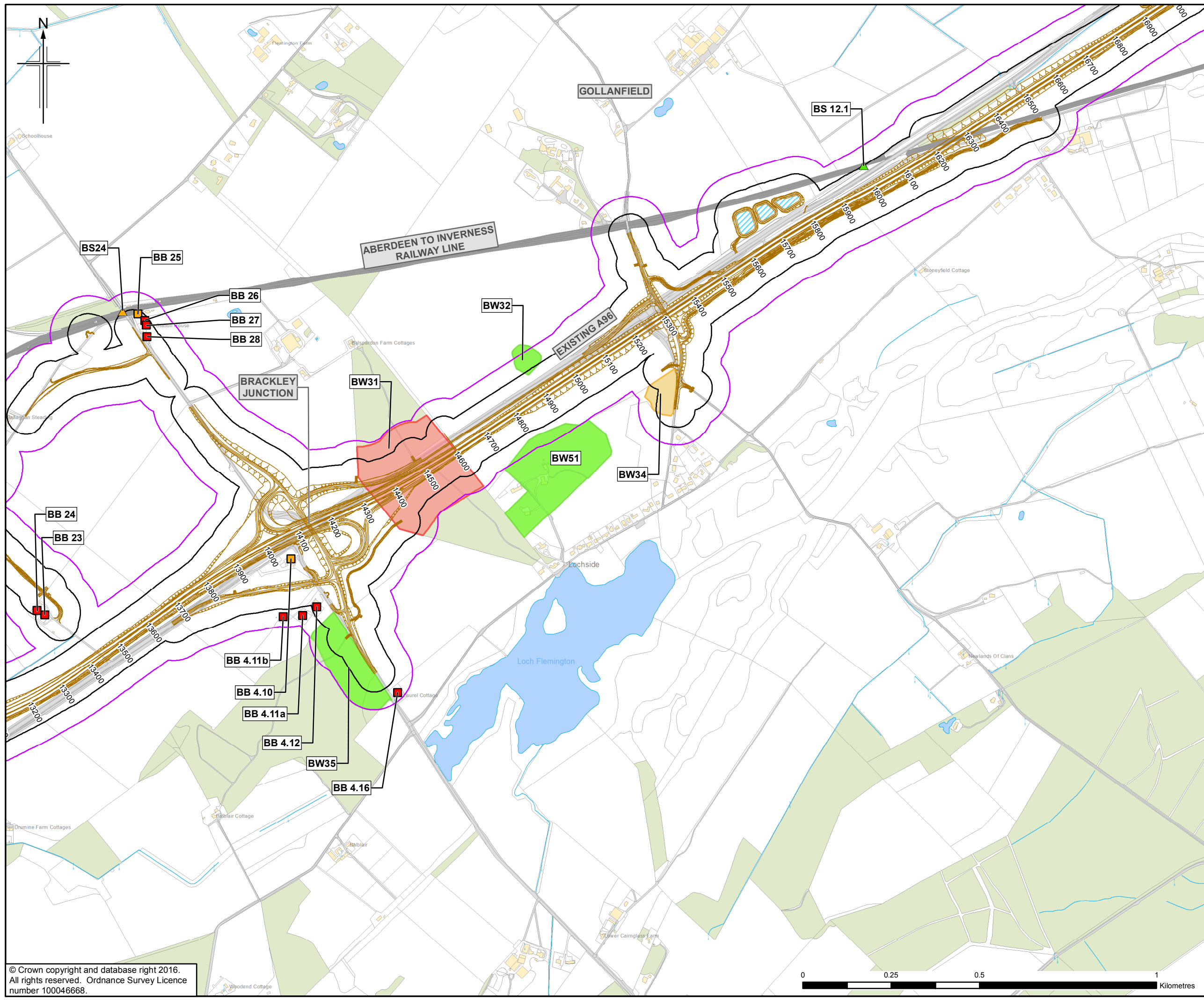
A96
 DUALLING
 INVERNESS TO NAIRN
 (incl. Nairn Bypass)

Drawing title
Figure 11.3e
Environmental Statement
Bat Habitat Assessment
 Sheet 5 of 12

Drawing Status	FINAL	
Scale	1:10,000 @ A3	DO NOT SCALE
Jacobs No.	B2103500	
BIM No.		
Drawing number	B2103500/EN/EIA/DR/1103e	Rev 0

This drawing is not to be used in whole or part other than for the intended purpose and project as defined on this drawing. Refer to the contract for full terms and conditions.





Legend

- Proposed Scheme (as per Draft Orders)
- SUDS (e.g Basin or Pond)*
- 50m Study Area
- 100m Study Area
- Desk Study Roost

Bat Roost Potential - Tree (BT)

- Category 1* Trees
- Category 1 Trees
- Category 2 Trees
- Category 3 Trees

Bat Roost Potential - Building (BB)

- Roost
- Moderate
- Negligible
- High
- Low

Bat Roost Potential - Structure (BS)

- High
- Low
- Moderate
- Negligible

Bat Habitat Value - Woodland Survey (BW)

- High
- Moderate
- Low

* Actual shape of pond/basin will be subject to detailed design

0	NOV 2016	ES Position	HM	JF	PG	ENG
Rev.	Rev. Date	Purpose of revision	Orig/Dwn	Checkd	Rev'd	Apprv'd

JACOBS
 55 Bedford Street, Glasgow, G2 7NK, UK
 Tel: +44(0)141 243 8000 Fax: +44(0)141 226 3109
 www.jacobs.com



A96
DUALLING
 INVERNESS TO NAIRN
 (incl. Nairn Bypass)

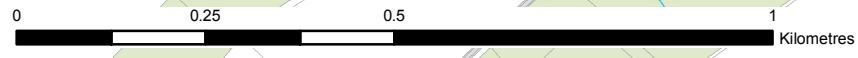
Figure 11.3f
Environmental Statement
Bat Habitat Assessment

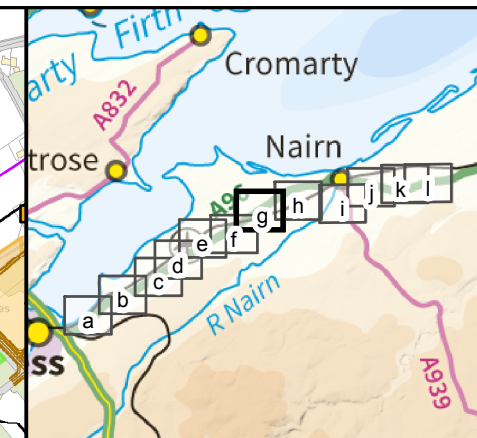
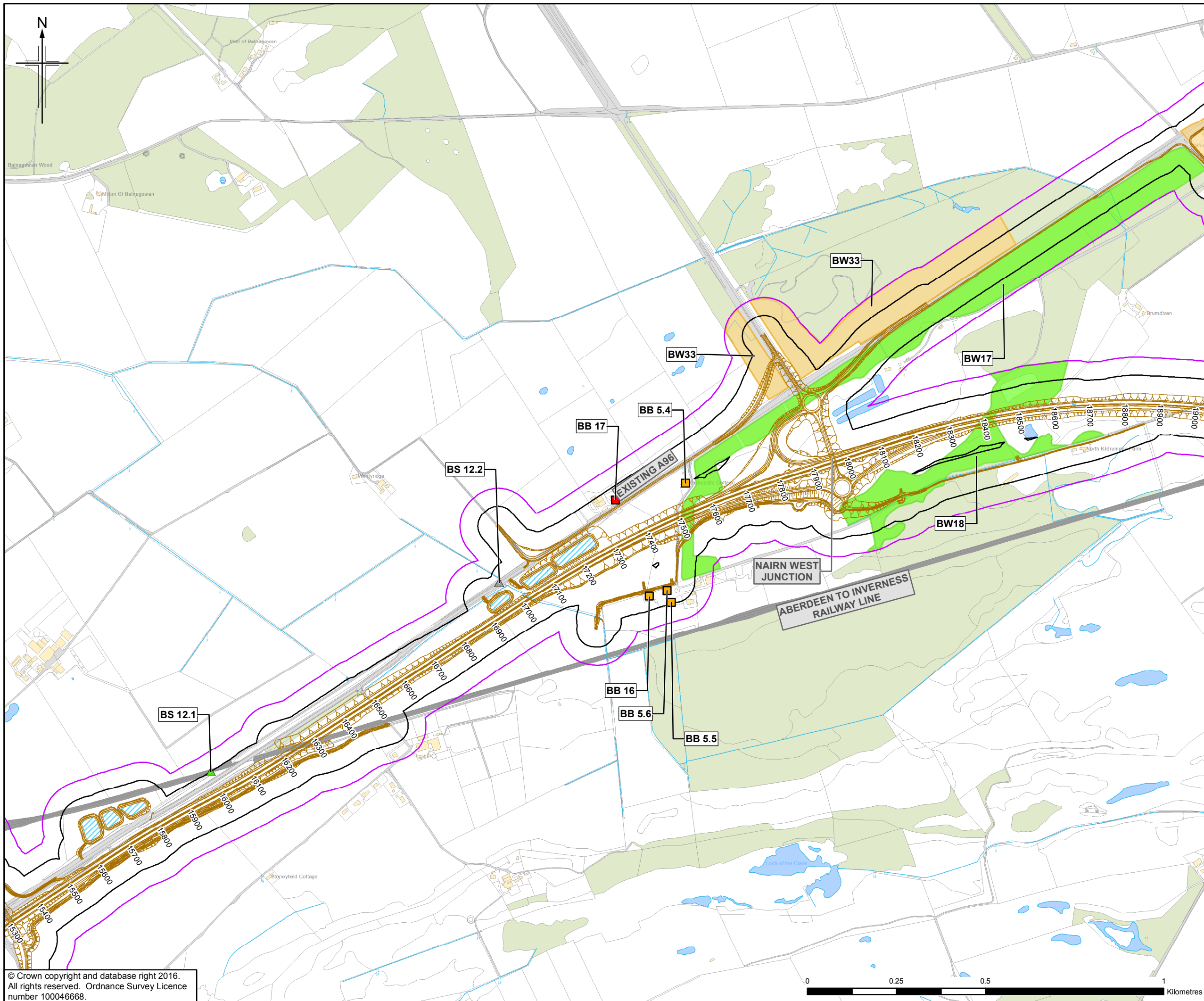
Sheet 6 of 12

Drawing Status: FINAL
 Scale: 1:10,000 @ A3 DO NOT SCALE
 Jacobs No. B2103500
 BIM No.
 Drawing number: B2103500/EN/EIA/DR/1103f Rev 0

This drawing is not to be used in whole or part other than for the intended purpose and project as defined on this drawing. Refer to the contract for full terms and conditions.

© Crown copyright and database right 2016.
 All rights reserved. Ordnance Survey Licence number 100046668.





- Legend**
- Proposed Scheme (as per Draft Orders)
 - SUDS (e.g Basin or Pond)*
 - 50m Study Area
 - 100m Study Area
 - Desk Study Roost
 - Bat Roost Potential - Tree (BT)**
 - ★ Category 1* Trees
 - ★ Category 1 Trees
 - ★ Category 2 Trees
 - ★ Category 3 Trees
 - Bat Roost Potential - Building (BB)**
 - Roost
 - Moderate
 - Negligible
 - High
 - Low
 - Bat Roost Potential - Structure (BS)**
 - ▲ High
 - ▲ Low
 - ▲ Moderate
 - ▲ Negligible
 - Bat Habitat Value - Woodland Survey (BW)**
 - High
 - Moderate
 - Low

* Actual shape of pond/basin will be subject to detailed design

0	NOV 2016	ES Publication	HM	JF	PG	ENG
Rev.	Rev. Date	Purpose of revision	Orig/Dwn	Checkd	Rev'd	Apprv'd

JACOBS
 66 Belford Street, Glasgow, G2 7NK, UK
 Tel: +44(0)141 243 8000 Fax: +44(0)141 226 3109
 www.jacobs.com

Client

 TRANSPORT SCOTLAND
 COMHÀIL ALBA

Project

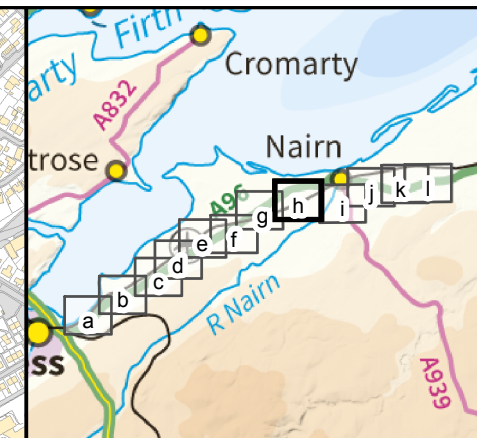
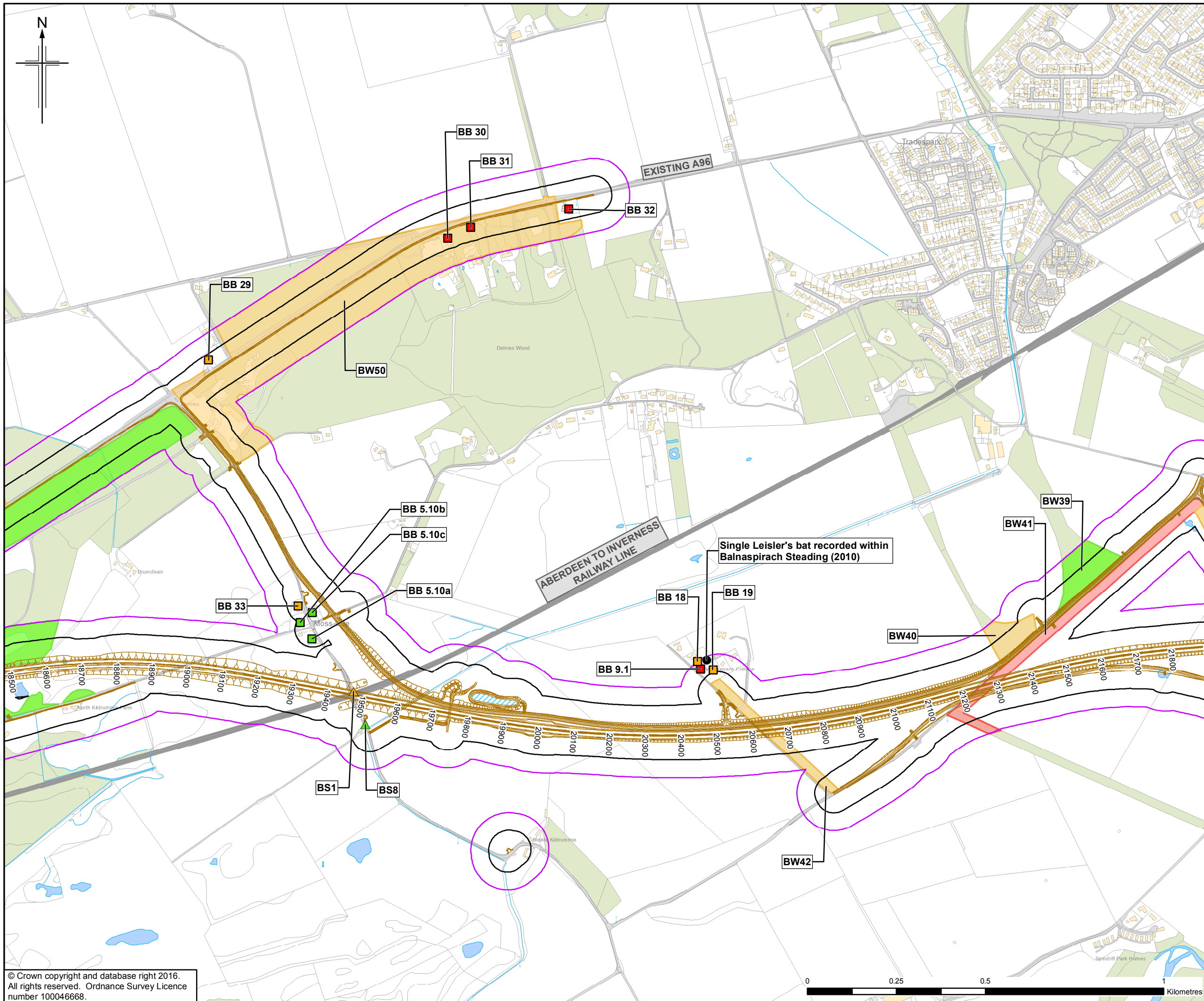
A96
 DUALLING
 INVERNESS TO NAIRN
 (incl. Nairn Bypass)

Drawing title
Figure 11.3g
Environmental Statement
Bat Habitat Assessment
 Sheet 7 of 12

Drawing Status	FINAL	
Scale	1:10,000 @ A3	DO NOT SCALE
Jacobs No.	B2103500	
BIM No.		
Drawing number	B2103500/EN/EIA/DR/1103g	Rev 0

This drawing is not to be used in whole or part other than for the intended purpose and project as defined on this drawing. Refer to the contract for full terms and conditions.





- Legend**
- Proposed Scheme (as per Draft Orders)
 - ▭ SUDS (e.g Basin or Pond)*
 - ▭ 50m Study Area
 - ▭ 100m Study Area
 - Desk Study Roost
 - Bat Roost Potential - Tree (BT)**
 - ★ Category 1* Trees
 - ★ Category 1 Trees
 - ★ Category 2 Trees
 - ★ Category 3 Trees
 - Bat Roost Potential - Building (BB)**
 - Roost
 - Moderate
 - Negligible
 - High
 - Low
 - Bat Roost Potential - Structure (BS)**
 - ▲ High
 - ▲ Low
 - ▲ Moderate
 - ▲ Negligible
 - Bat Habitat Value - Woodland Survey (BW)**
 - High
 - Moderate
 - Low
- * Actual shape of pond/basin will be subject to detailed design

Rev.	Rev. Date	ES Publication	HM	JF	PG	ENG
0	NOV 2016					
Rev.	Rev. Date	Purpose of revision	Orig/Dwn	Checkd	Rev'd	Apprv'd

JACOBS
 16 Bedford Street, Glasgow, G2 7NK, UK
 Tel: +44(0)141 243 8000 Fax: +44(0)141 228 3109
 www.jacobs.com



Drawing title

**Figure 11.3h
 Environmental Statement
 Bat Habitat Assessment**

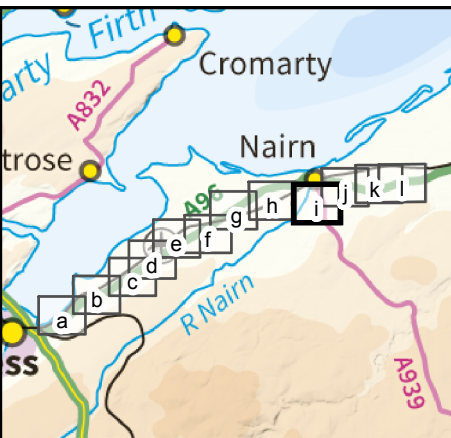
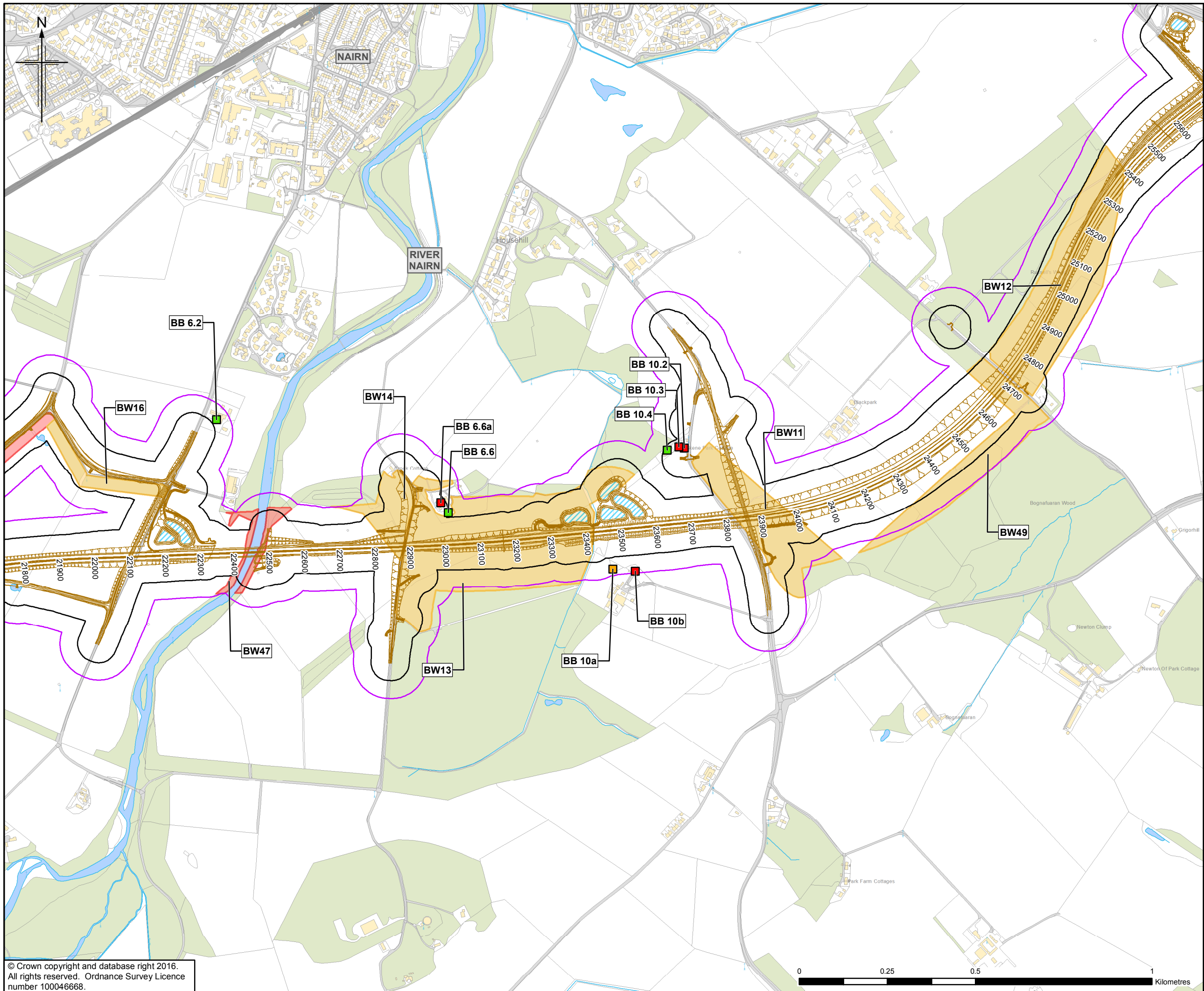
Sheet 8 of 12

Drawing Status	FINAL	
Scale	1:10,000 @ A3	DO NOT SCALE
Jacobs No.	B2103500	
BIM No.		
Drawing number	B2103500/EN/EIA/DR/1103h	Rev 0

This drawing is not to be used in whole or part other than for the intended purpose and project as defined on this drawing. Refer to the contract for full terms and conditions.

© Crown copyright and database right 2016.
 All rights reserved. Ordnance Survey Licence number 100046668.





- Legend**
- Proposed Scheme (as per Draft Orders)
 - SUDS (e.g Basin or Pond)*
 - 50m Study Area
 - 100m Study Area
 - Desk Study Roost
 - Bat Roost Potential - Tree (BT)**
 - ★ Category 1* Trees
 - ★ Category 1 Trees
 - ★ Category 2 Trees
 - ★ Category 3 Trees
 - Bat Roost Potential - Building (BB)**
 - Roost
 - Moderate
 - Negligible
 - High
 - Low
 - Bat Roost Potential - Structure (BS)**
 - ▲ High
 - ▲ Moderate
 - ▲ Negligible
 - ▲ Low
 - Bat Habitat Value - Woodland Survey (BW)**
 - High
 - Moderate
 - Low

* Actual shape of pond/basin will be subject to detailed design

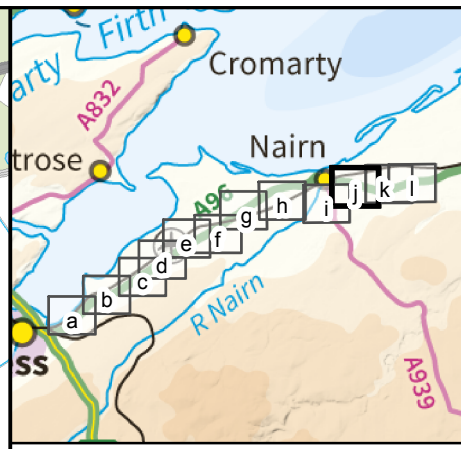
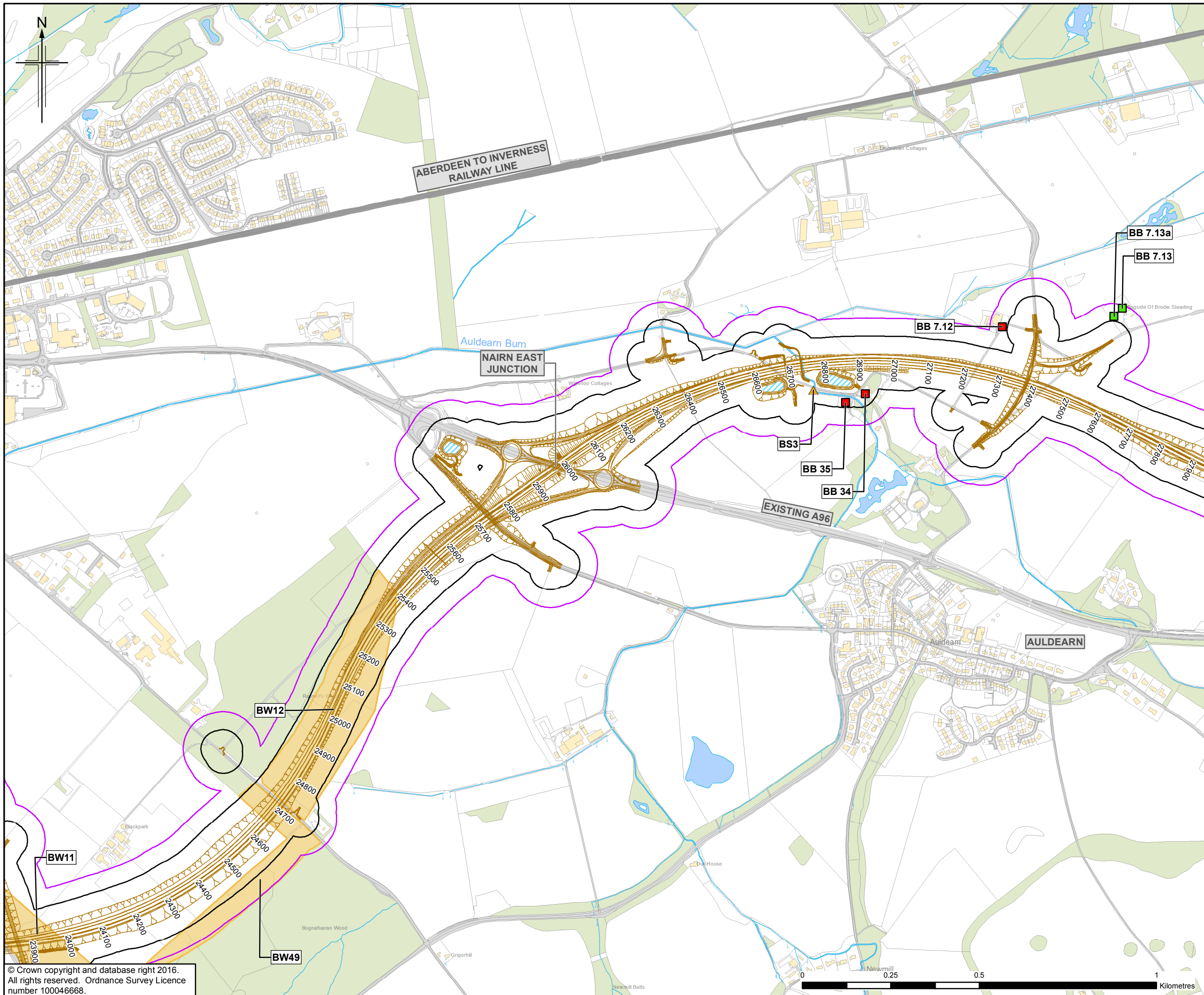
0	NOV 2016	ES Publication	HM	JF	PG	ENG
Rev.	Rev. Date	Purpose of revision	Orig/Dwn	Checkd	Rev'd	Apprv'd

JACOBS
 66 Bonhill Street, Glasgow, G2 7NK, UK
 Tel: +44(0)141 243 8000 Fax: +44(0)141 226 3109
 www.jacobs.com



Client
 Project
 Drawing title
Figure 11.3i
Environmental Statement
Bat Habitat Assessment
 Sheet 9 of 12
 Drawing Status: FINAL
 Scale: 1:10,000 @ A3 DO NOT SCALE
 Jacobs No.: B2103500
 BIM No.:
 Drawing number: B2103500/EN/EIA/DR/1103i Rev 0
 This drawing is not to be used in whole or part other than for the intended purpose and project as defined on this drawing. Refer to the contract for full terms and conditions.





Legend

- Proposed Scheme (as per Draft Orders)
- SUDS (e.g Basin or Pond)*
- 50m Study Area
- 100m Study Area
- Desk Study Roost

Bat Roost Potential - Tree (BT)

- Category 1* Trees
- Category 1 Trees
- Category 2 Trees
- Category 3 Trees

Bat Roost Potential - Building (BB)

- Roost
- Moderate
- Negligible
- High
- Low

Bat Roost Potential - Structure (BS)

- High
- Low
- Moderate
- Negligible

Bat Habitat Value - Woodland Survey (BW)

- High
- Moderate
- Low

* Actual shape of pond/basin will be subject to detailed design

0	NOV 2016	ES Publication	HM	JF	PG	ENG
Rev.	Rev. Date	Purpose of revision	Orig/Dwn	Checkd	Rev'd	Apprv'd

JACOBS
 66 Belford Street, Glasgow, G2 7NK, UK
 Tel: +44(0)141 243 8000 Fax: +44(0)141 226 3109
 www.jacobs.com



Drawing title

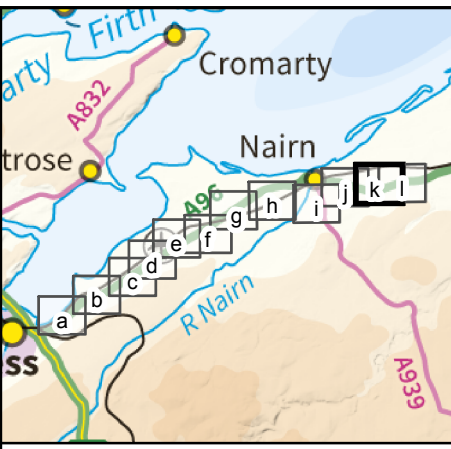
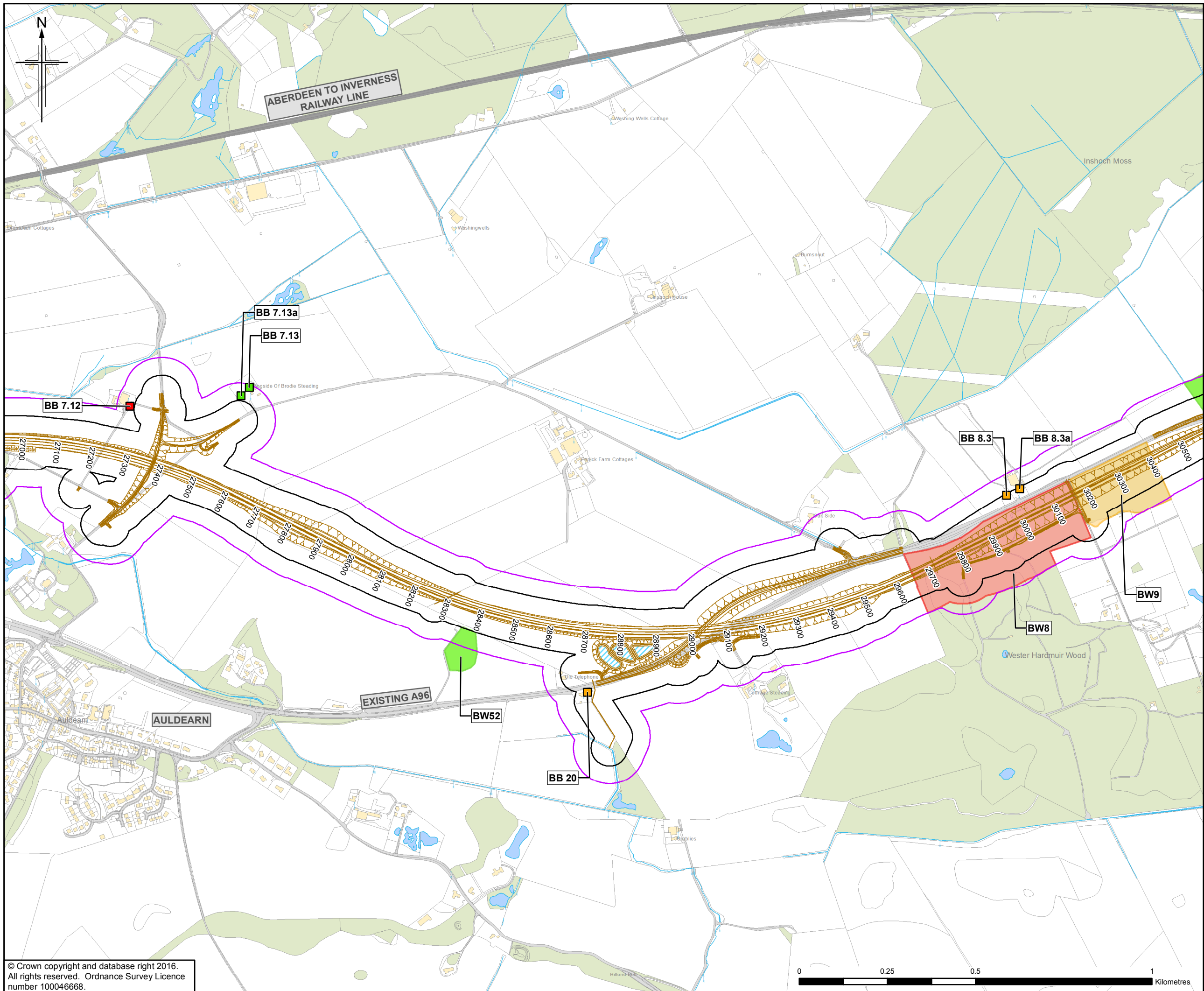
**Figure 11.3j
 Environmental Statement
 Bat Habitat Assessment**

Sheet 10 of 12

Drawing Status	FINAL	
Scale	1:10,000 @ A3	DO NOT SCALE
Jacobs No.	B2103500	
BIM No.		
Drawing number	B2103500/EN/EIA/DR/1103j	Rev 0

This drawing is not to be used in whole or part other than for the intended purpose and project as defined on this drawing. Refer to the contract for full terms and conditions.

© Crown copyright and database right 2016.
 All rights reserved. Ordnance Survey Licence number 100046668.



- Legend**
- Proposed Scheme (as per Draft Orders)
 - SUDS (e.g Basin or Pond)*
 - 50m Study Area
 - 100m Study Area
 - Desk Study Roost
 - Bat Roost Potential - Tree (BT)**
 - Category 1* Trees
 - Category 1 Trees
 - Category 2 Trees
 - Category 3 Trees
 - Bat Roost Potential - Building (BB)**
 - Roost
 - Moderate
 - Negligible
 - High
 - Low
 - Bat Roost Potential - Structure (BS)**
 - High
 - Low
 - Moderate
 - Negligible
 - Bat Habitat Value - Woodland Survey (BW)**
 - High
 - Moderate
 - Low

* Actual shape of pond/basin will be subject to detailed design

0	NOV 2016	ES Publication	HM	JF	PG	ENG
Rev.	Rev. Date	Purpose of revision	Orig/Dwn	Checkd	Rev'd	Apprv'd

JACOBS
 55 Bedford Street, Glasgow, G2 7NK, UK
 Tel: +44(0)141 243 8000 Fax: +44(0)141 226 3109
 www.jacobs.com

Client

 TRANSPORT SCOTLAND
 COMH-DHAIL ALBA

Project

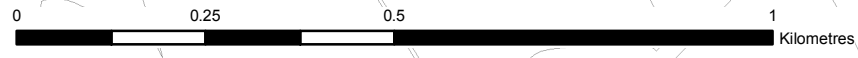
A96
 DUALLING
 INVERNESS TO NAIRN
 (incl. Nairn Bypass)

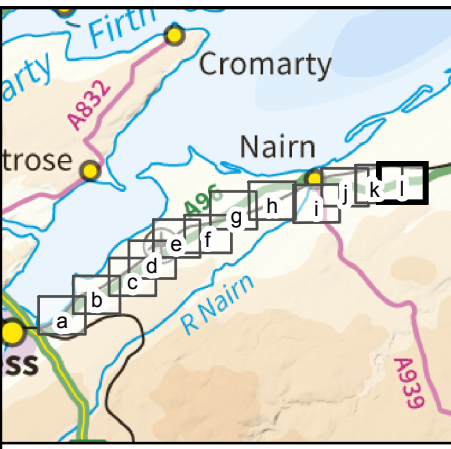
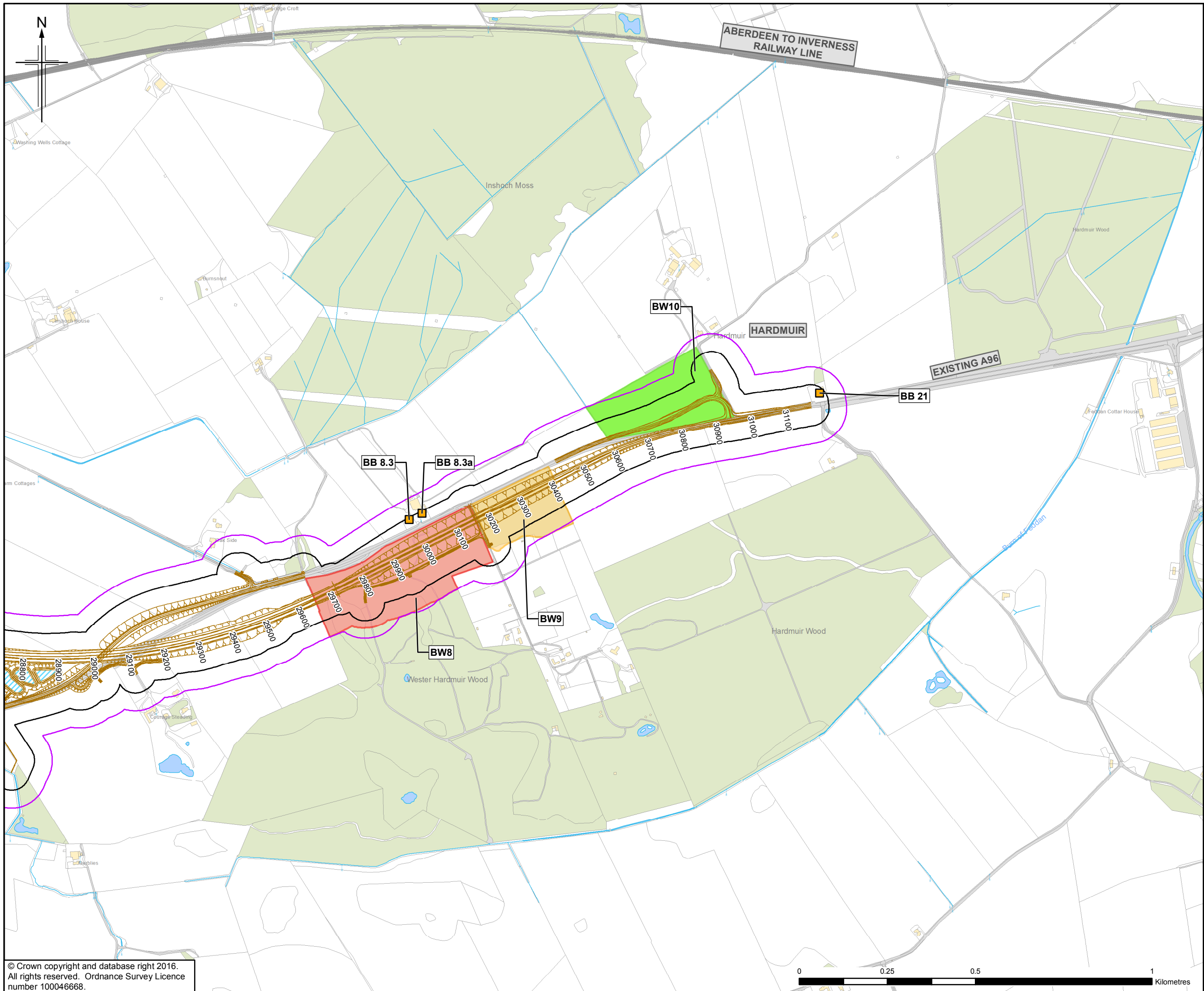
Drawing title
Figure 11.3k
Environmental Statement
Bat Habitat Assessment
 Sheet 11 of 12

Drawing Status	FINAL	
Scale	1:10,000 @ A3	DO NOT SCALE
Jacobs No.	B2103500	
BIM No.		
Drawing number	B2103500/EN/EIA/DR/1103k	Rev 0

This drawing is not to be used in whole or part other than for the intended purpose and project as defined on this drawing. Refer to the contract for full terms and conditions.

© Crown copyright and database right 2016.
 All rights reserved. Ordnance Survey Licence number 100046668.





- Legend**
- Proposed Scheme (as per Draft Orders)
 - SUDS (e.g Basin or Pond)*
 - 50m Study Area
 - 100m Study Area
 - Desk Study Roost
 - Bat Roost Potential - Tree (BT)**
 - ★ Category 1* Trees
 - ★ Category 1 Trees
 - ★ Category 2 Trees
 - ★ Category 3 Trees
 - Bat Roost Potential - Building (BB)**
 - Roost
 - Moderate
 - Negligible
 - High
 - Low
 - Bat Roost Potential - Structure (BS)**
 - ▲ High
 - ▲ Low
 - ▲ Moderate
 - ▲ Negligible
 - Bat Habitat Value - Woodland Survey (BW)**
 - High
 - Moderate
 - Low
- * Actual shape of pond/basin will be subject to detailed design

0	NOV 2016	ES Publication	HM	JF	PG	ENG
Rev.	Rev. Date	Purpose of revision	Orig/Dwn	Checked	Rev'd	Apprv'd

JACOBS
 66 Balmwell Street, Glasgow, G2 7NK, UK
 Tel: +44(0)141 243 8000 Fax: +44(0)141 226 3109
 www.jacobs.com



Drawing title
**Figure 11.31
 Environmental Statement
 Bat Habitat Assessment**

Sheet 12 of 12

Drawing Status: FINAL
 Scale: 1:10,000 @ A3 DO NOT SCALE
 Jacobs No.: B2103500
 BIM No.:
 Drawing number: B2103500/EN/EIA/DR/11031 Rev 0

This drawing is not to be used in whole or part other than for the intended purpose and project as defined on this drawing. Refer to the contract for full terms and conditions.

