

- Legend**
- No. S4.1 (Inv. - Ardersier - Culloden)
 - No. S4.2 (Inv. - Ardersier - Blackcastle - Culloden)
 - No. 2B (Inv. - Tornagrain - Nairn High Street) (Not presently in service)
 - No. 253 (Inv. - Nairn - Hardmuir - Brodie - Nairn) (Not presently in service)
 - No. 113 (Nairn Bus Station - Foynesfield - Hardmuir - Nairn)
 - No. 23 (Inv. - Tornagrain - Balloch)
 - No. 252 (Inv. - Gollanfield - Cawdor - Nairn)
 - School drop off point

OS Mastermap was obtained in November 2015 and is for illustration purposes only.

0 100 200 300 400 500 600 700 800 900 1000 m
 SCALE 1 : 10,000

0	11/11/2016	DMRB Stage 3 Report	LW	RJT	GAH	EHG
Rev	Rev. Date	Purpose of revision	Drawn	Checked	Rev'd	Appr'd

JACOBS
 95 Bothwell St, Glasgow, G2 7HX
 Tel: +44(0)141 243 8000 Fax: +44(0)141 226 3109
 www.jacobs.com

Client

TRANSPORT SCOTLAND
 CÒMHDHAIL ALBA

Project

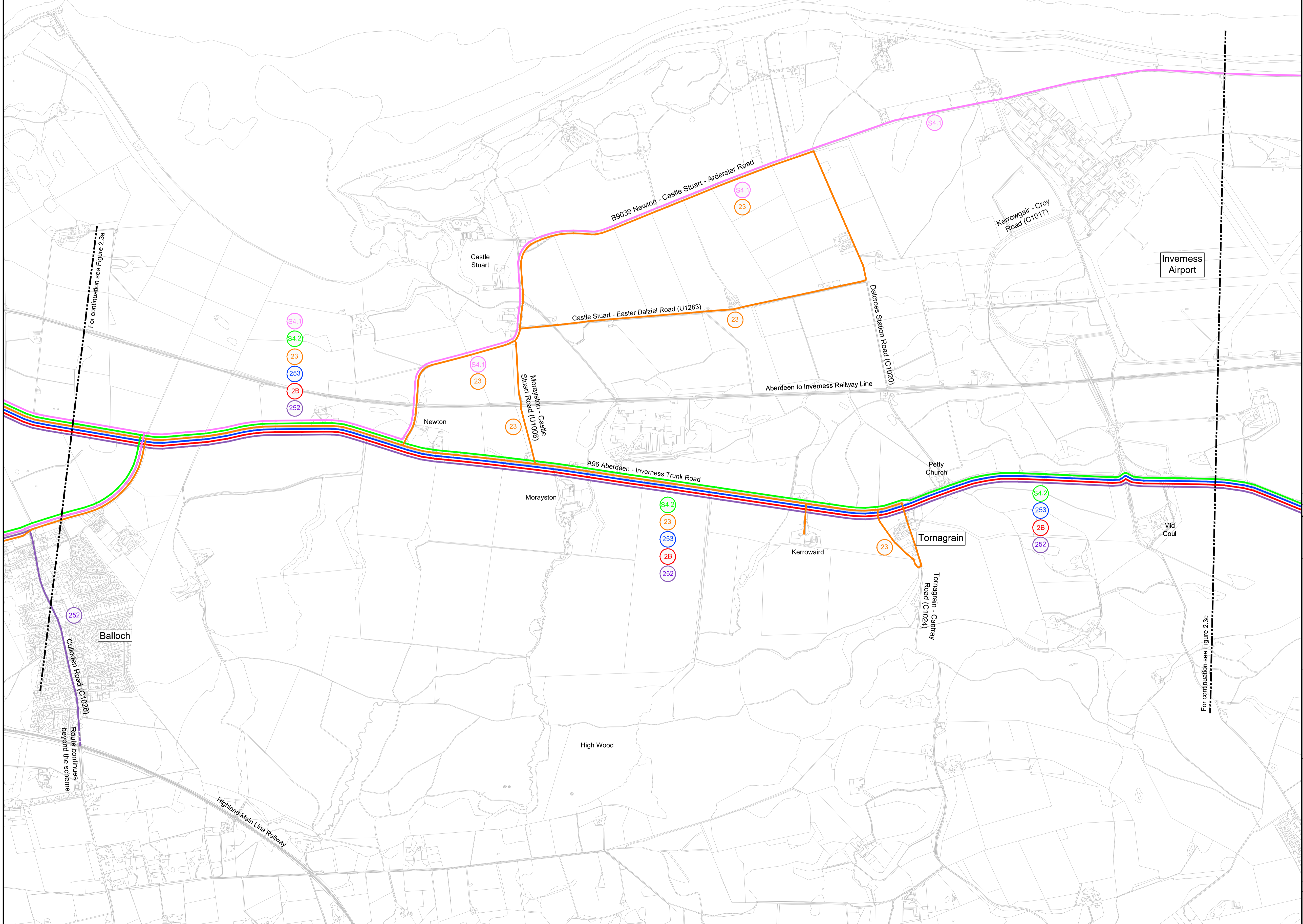
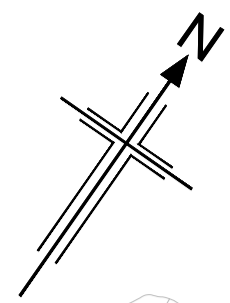
A96 DUALLING
 INVERNESS TO NAIRN
 (incl. Nairn Bypass)

Drawing title

**DMRB STAGE 3
 SCHEME ASSESSMENT REPORT
 EXISTING SCHOOL BUS ROUTES
 SHEET 1 OF 6**

Drawing status	FINAL	
Scale	1:10,000 @ A1	DO NOT SCALE
Jacobs No.	B2103500	
BIM No.		
Drawing number	FIGURE 2.3a	Rev 0

Reproduced by permission of Ordnance Survey on behalf of HMSO.
 © Crown copyright and database right 2016. All rights reserved.
 Ordnance Survey Licence number 100046668.



- Legend**
- No. S4.1 (Inv. - Ardersier - Culloden)
 - No. S4.2 (Inv. - Ardersier - Blackcastle - Culloden)
 - No. 2B (Inv. - Tornagrain - Nairn High Street)
(Not presently in service)
 - No. 253 (Inv. - Nairn - Hardmuir - Brodie - Nairn)
(Not presently in service)
 - No. 113 (Nairn Bus Station - Foynesfield - Hardmuir - Nairn)
 - No. 23 (Inv. - Tornagrain - Balloch)
 - No.252 (Inv. - Gollanfield - Cawdor - Nairn)
 - School drop off point

OS Mastermap was obtained in November 2015 and is for illustration purposes only.

SCALE 1 : 10,000

0	11/11/2016	DMRB Stage 3 Report	LW	RJT	GAH	EHG
Rev	Rev. Date	Purpose of revision	Drawn	Checked	Rev'd	Apprv'd

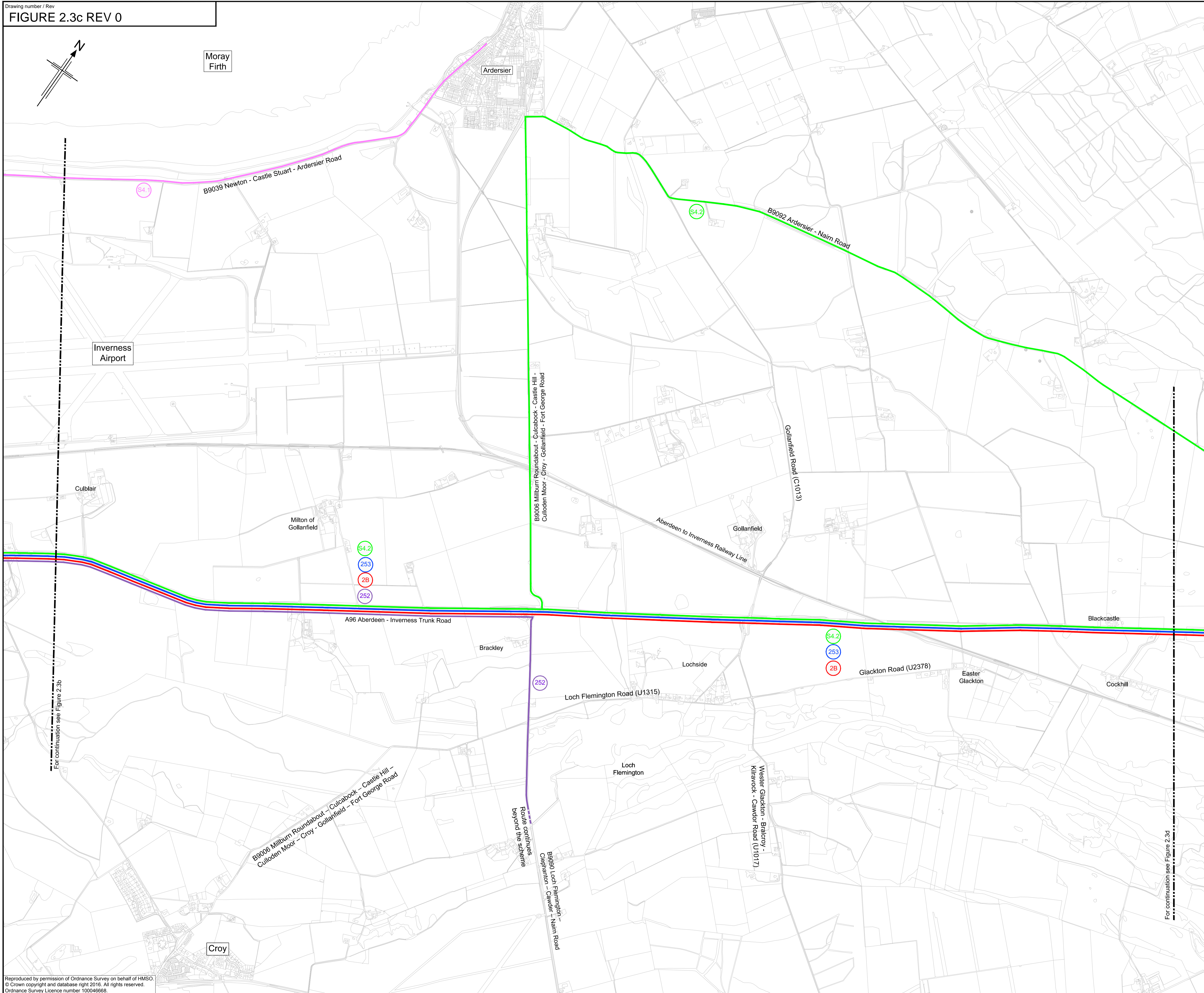
JACOBS
 95 Bothwell St, Glasgow, G2 7HX
 Tel:+44(0)141 243 8000 Fax:+44(0)141 226 3109
 www.jacobs.com



**DMRB STAGE 3
 SCHEME ASSESSMENT REPORT
 EXISTING SCHOOL BUS ROUTES
 SHEET 2 OF 6**

Drawing status	FINAL	
Scale	1:10,000 @ A1	DO NOT SCALE
Jacobs No.	B2103500	
BIM No.		
Drawing number	FIGURE 2.3b	Rev 0

Reproduced by permission of Ordnance Survey on behalf of HMSO.
 © Crown copyright and database right 2016. All rights reserved.
 Ordnance Survey Licence number 100046668



- Legend**
- No. S4.1 (Inv. - Ardersier - Culloden)
 - No. S4.2 (Inv. - Ardersier - Blackcastle - Culloden)
 - No. 2B (Inv. - Tornagrain - Nairn High Street)
 - No. 253 (Inv. - Nairn - Hardmuir - Brodie - Nairn) (Not presently in service)
 - No. 113 (Nairn Bus Station - Foynesfield - Hardmuir - Nairn)
 - No. 23 (Inv. - Tornagrain - Balloch)
 - No. 252 (Inv. - Gollanfield - Cawdor - Nairn)
 - School drop off point

OS Mastermap was obtained in November 2015 and is for illustration purposes only.

0 100 200 300 400 500 600 700 800 900 1000 m
 SCALE 1 : 10,000

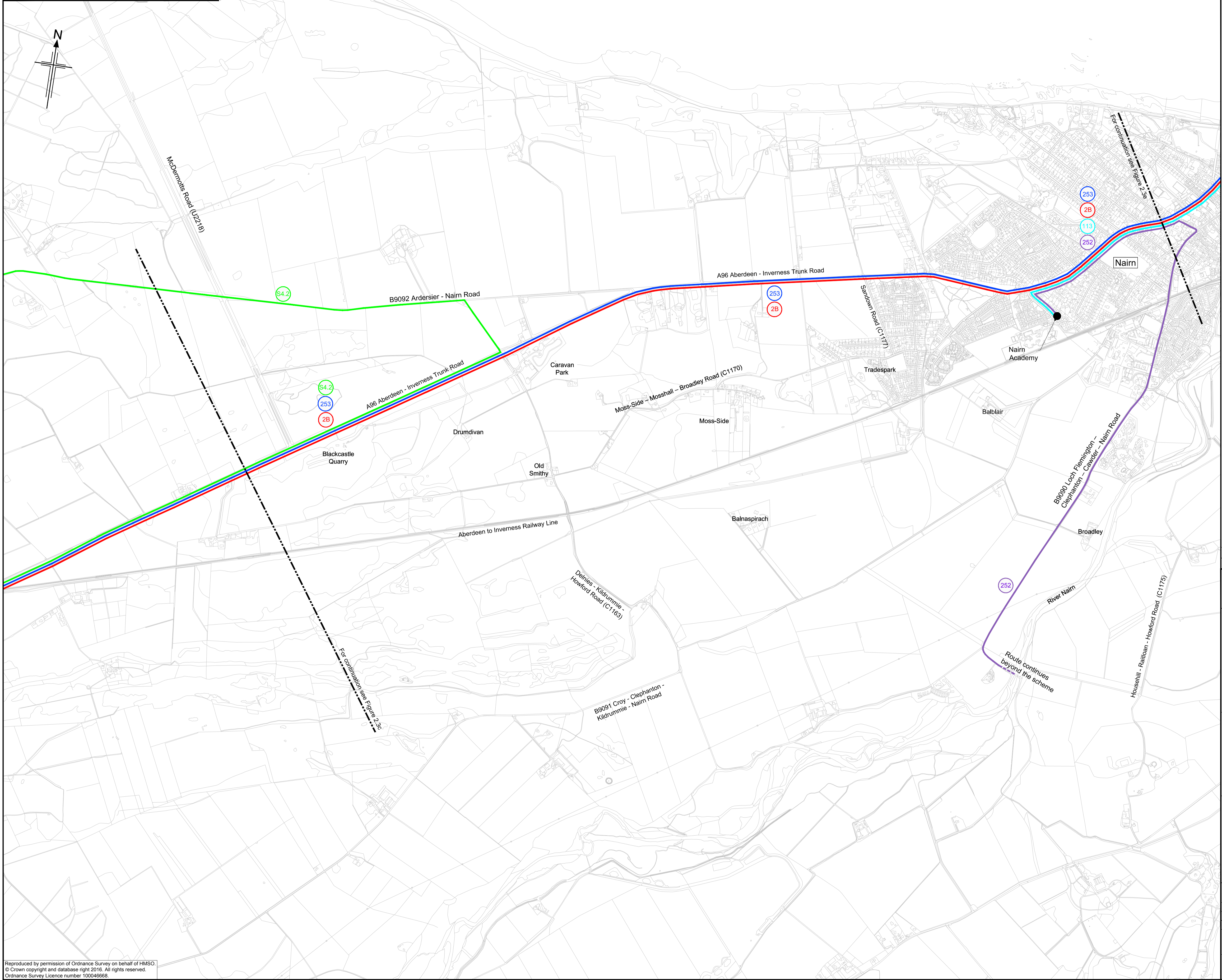
0	11/11/2016	DMRB Stage 3 Report	LW	RJT	GAH	EHG
Rev	Rev. Date	Purpose of revision	Drawn	Checked	Rev'd	Apprv'd



**DMRB STAGE 3
 SCHEME ASSESSMENT REPORT
 EXISTING SCHOOL BUS ROUTES
 SHEET 3 OF 6**

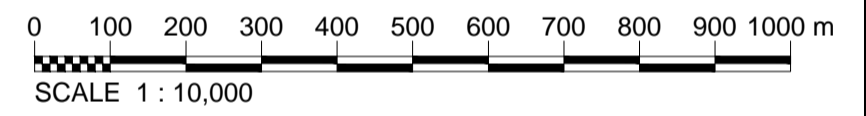
Drawing status	FINAL	
Scale	1:10,000 @ A1	DO NOT SCALE
Jacobs No.	B2103500	
BIM No.		
Drawing number	FIGURE 2.3c	Rev 0

Reproduced by permission of Ordnance Survey on behalf of HMSO.
 © Crown copyright and database right 2016. All rights reserved.
 Ordnance Survey Licence number 100046668.



- Legend**
- No. S4.1 (Inv. - Ardersier - Culloden)
 - No. S4.2 (Inv. - Ardersier - Blackcastle - Culloden)
 - No. 2B (Inv. - Tornagrain - Nairn High Street)
 - No. 253 (Inv. - Nairn - Hardmuir - Brodie - Nairn) (Not presently in service)
 - No. 113 (Nairn Bus Station - Foynesfield - Hardmuir - Nairn)
 - No. 23 (Inv. - Tornagrain - Balloch)
 - No. 252 (Inv. - Gollanfield - Cawdor - Nairn)
 - School drop off point

OS Mastermap was obtained in November 2015 and is for illustration purposes only.



0	11/11/2016	DMRB Stage 3 Report	LW	RJT	GAH	EHG
Rev	Rev. Date	Purpose of revision	Drawn	Checked	Rev'd	Apprv'd

JACOBS
 95 Bothwell St, Glasgow, G2 7HX
 Tel: +44(0)141 243 8000 Fax: +44(0)141 226 3109
 www.jacobs.com



**DMRB STAGE 3
 SCHEME ASSESSMENT REPORT
 EXISTING SCHOOL BUS ROUTES
 SHEET 4 OF 6**

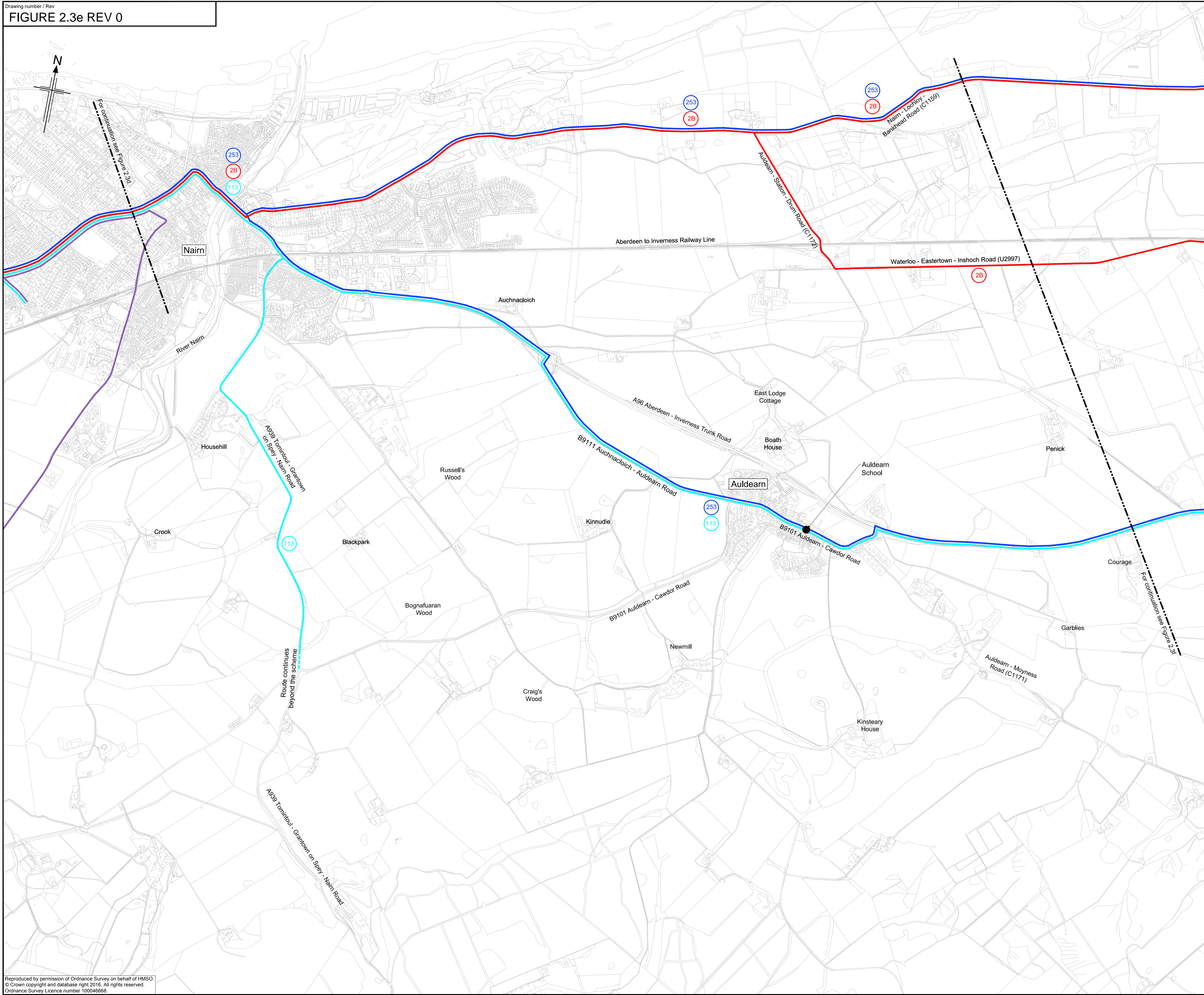
Drawing status: **FINAL**

Scale: 1:10,000 @ A1 **DO NOT SCALE**

Jacobs No. B2103500
 BIM No.

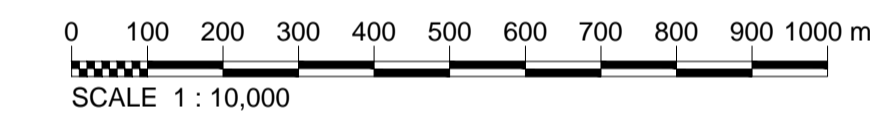
Drawing number: **FIGURE 2.3d** Rev: **0**

Reproduced by permission of Ordnance Survey on behalf of HMSO. © Crown copyright and database right 2016. All rights reserved. Ordnance Survey Licence number 100046668.



- Legend**
- No. S4.1 (Inv. - Ardersier - Culloden)
 - No. S4.2 (Inv. - Ardersier - Blackcastle - Culloden)
 - No. 2B (Inv. - Tornagrain - Nairn High Street)
 - No. 253 (Inv. - Nairn - Hardmuir - Brodie - Nairn)
(Not presently in service)
 - No. 113 (Nairn Bus Station - Foynesfield - Hardmuir - Nairn)
 - No. 23 (Inv. - Tornagrain - Balloch)
 - No. 252 (Inv. - Gollanfield - Cawdor - Nairn)
 - School drop off point

OS Mastermap was obtained in November 2015 and is for illustration purposes only.



0	11/11/2016	DMRB Stage 3 Report	LW	RJT	GAH	EHG
Rev	Rev. Date	Purpose of revision	Drawn	Checked	Rev'd	Approved

JACOBS
 95 Bothwell St, Glasgow, G2 7HX
 Tel: +44(0)141 243 8000 Fax: +44(0)141 226 3109
 www.jacobs.com

Client

Project

Drawing title

**DMRB STAGE 3
 SCHEME ASSESSMENT REPORT
 EXISTING SCHOOL BUS ROUTES
 SHEET 5 OF 6**

Drawing status

FINAL

Scale: 1:10,000 @ A1 **DO NOT SCALE**

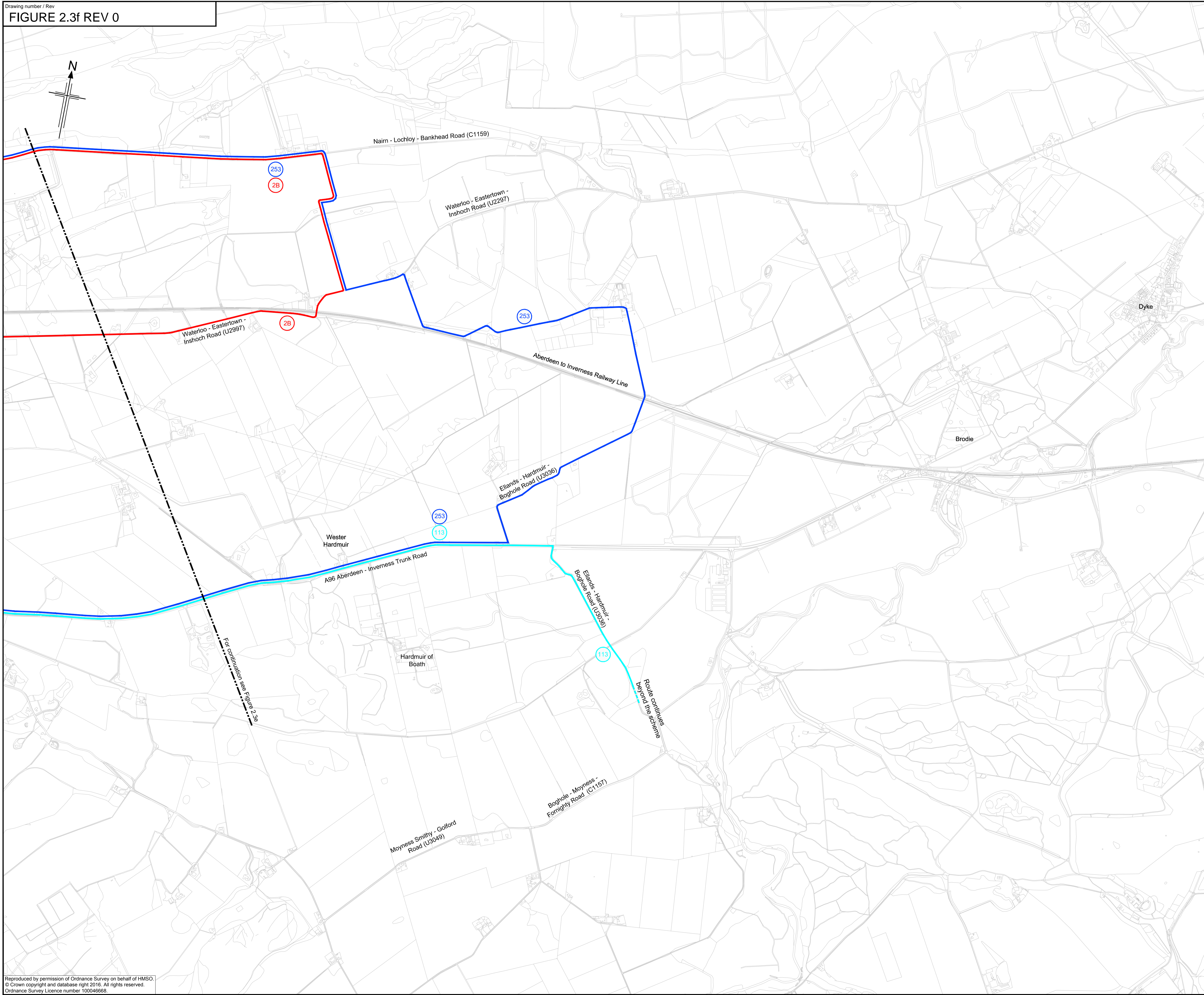
Jacobs No. B2103500

BIM No.

Drawing number **FIGURE 2.3e** Rev **0**

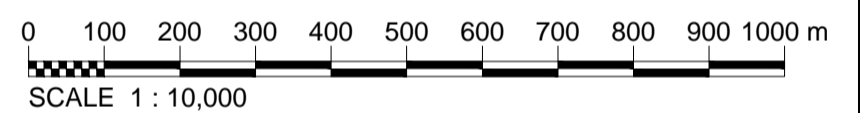
This drawing is not to be used in whole or part other than for the intended purpose and project as defined on this drawing. Refer to the contract for full terms and conditions.

Reproduced by permission of Ordnance Survey on behalf of HMSO.
 © Crown copyright and database right 2016. All rights reserved.
 Ordnance Survey Licence number 100046668



- Legend**
- No. S4.1 (Inv. - Ardersier - Culloden)
 - No. S4.2 (Inv. - Ardersier - Blackcastle - Culloden)
 - No. 2B (Inv. - Tornagrain - Nairn High Street)
(Not presently in service)
 - No. 253 (Inv. - Nairn - Hardmuir - Brodie - Nairn)
(Not presently in service)
 - No. 113 (Nairn Bus Station - Foynesfield - Hardmuir - Nairn)
 - No. 23 (Inv. - Tornagrain - Balloch)
 - No. 252 (Inv. - Gollanfield - Cawdor - Nairn)
 - School drop off point

OS Mastermap was obtained in November 2015 and is for illustration purposes only.



0	11/11/2016	DMRB Stage 3 Report	LW	RJT	GAH	EHG
Rev	Rev. Date	Purpose of revision	Drawn	Checked	Rev'd	Apprv'd

JACOBS
 95 Bothwell St, Glasgow, G2 7HX
 Tel: +44(0)141 243 8000 Fax: +44(0)141 226 3109
 www.jacobs.com



**DMRB STAGE 3
 SCHEME ASSESSMENT REPORT
 EXISTING SCHOOL BUS ROUTES
 SHEET 6 OF 6**

Scale	1:10,000 @ A1	DO NOT SCALE
Jacobs No.	B2103500	
BIM No.		

Drawing number	FIGURE 2.3f	Rev	0
----------------	--------------------	-----	----------

Reproduced by permission of Ordnance Survey on behalf of HMSO.
 © Crown copyright and database right 2016. All rights reserved.
 Ordnance Survey Licence number 100046668.

This drawing is not to be used in whole or part other than for the intended purpose and project as defined on this drawing. Refer to the contract for full terms and conditions.