

- Legend**
- Proposed Scheme (as per Draft Orders)
 - ▨ SUDS (e.g. Basin or Pond)*
 - Shared Use Path for Non-Motorised Users (NMU)

* Actual shape of pond/basin will be subject to detailed design

| Rev. | Rev. Date | Purpose of revision | Orig/Dwn | Checkd | Rev'd | Apprv'd |
|------|-----------|---------------------|----------|--------|-------|---------|
| 0 | NOV 2016 | ES Publication | HM | PS | PS | ENG |

JACOBS
 66 Belford Street, Glasgow, G2 7NK, UK
 Tel: +44(0)141 243 8000 Fax: +44(0)141 226 3109
 www.jacobs.com

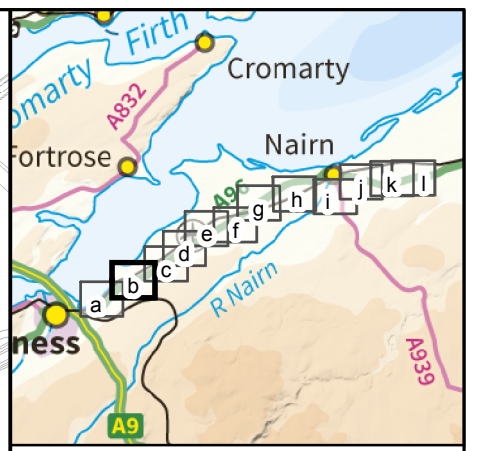
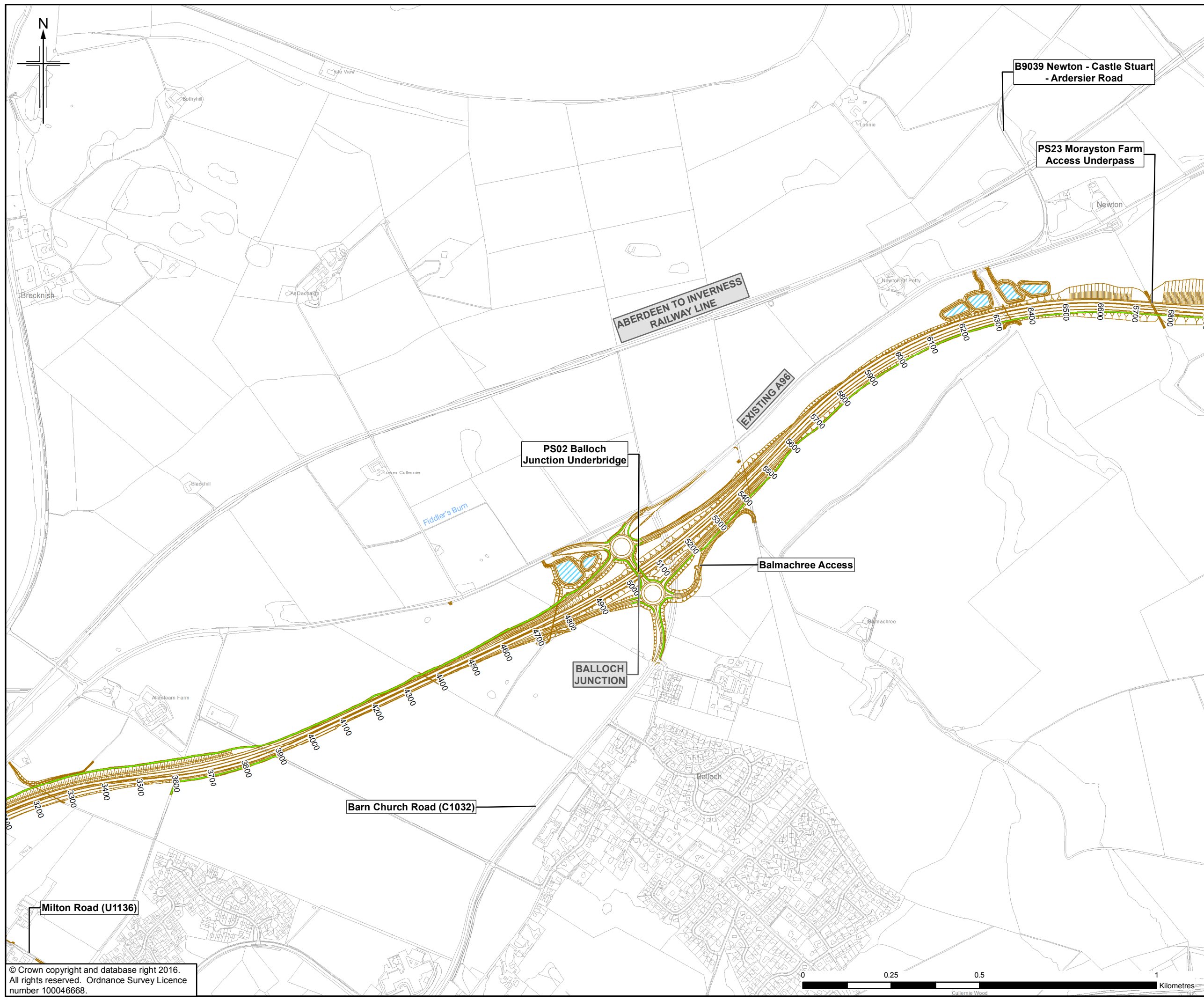


Drawing title
**Figure 4.1a
 Environmental Statement
 The Proposed Scheme**

| | | | |
|----------------|-------------------------|--------------|---------------|
| Drawing Status | FINAL | | Sheet 1 of 12 |
| Scale | 1:10,000 @ A3 | DO NOT SCALE | |
| Jacobs No. | B2103500 | | |
| BIM No. | | | |
| Drawing number | B2103500/EN/EIA/DR/401a | Rev | 0 |

© Crown copyright and database right 2016.
 All rights reserved. Ordnance Survey Licence number 100046668.





- Legend**
- Proposed Scheme (as per Draft Orders)
 - SUDS (e.g. Basin or Pond)*
 - Shared Use Path for Non-Motorised Users (NMU)

* Actual shape of pond/basin will be subject to detailed design

| Rev. | Rev. Date | Purpose of revision | Orig/Dwn | Check'd | Rev'd | Apprv'd |
|------|-----------|---------------------|----------|---------|-------|---------|
| 0 | NOV 2016 | ES Publication | HM | PS | PS | ENG |

JACOBS
 66 Bedford Street, Glasgow, G2 7NK, UK
 Tel: +44(0)141 243 8000 Fax: +44(0)141 226 3109
 www.jacobs.com

Client

 TRANSPORT SCOTLAND
 COMH-DHAIL ALBA

Project

A96
 DUALLING
 INVERNESS TO NAIRN
 (incl. Nairn Bypass)

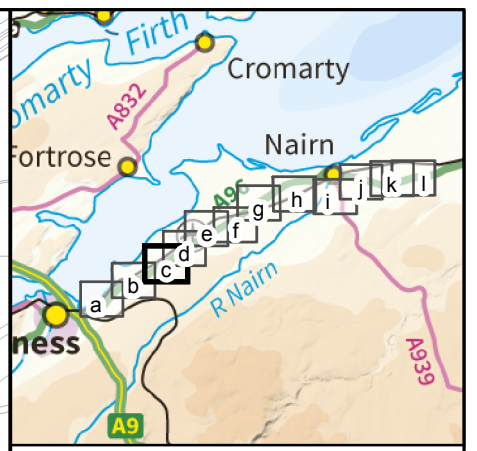
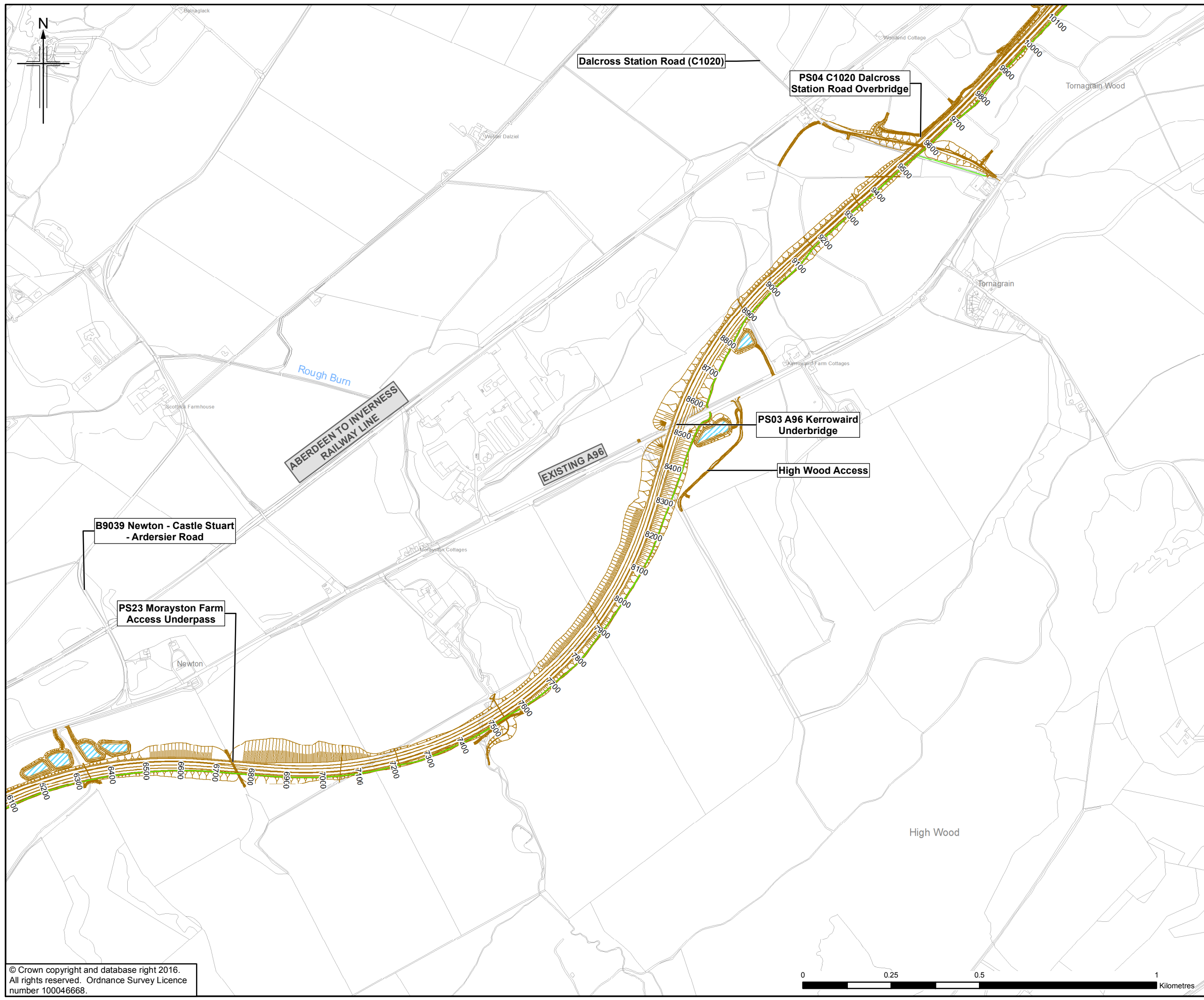
Drawing title
Figure 4.1b
Environmental Statement
The Proposed Scheme

Sheet 2 of 12

| | | |
|----------------|-------------------------|--------------|
| Drawing Status | FINAL | |
| Scale | 1:10,000 @ A3 | DO NOT SCALE |
| Jacobs No. | B2103500 | |
| BIM No. | | |
| Drawing number | B2103500/EN/EIA/DR/401b | Rev 0 |

This drawing is not to be used in whole or part other than for the intended purpose and project as defined on this drawing. Refer to the contract for full terms and conditions.





- Legend**
- Proposed Scheme (as per Draft Orders)
 - SUDS (e.g. Basin or Pond)*
 - Shared Use Path for Non-Motorised Users (NMU)

* Actual shape of pond/basin will be subject to detailed design

| Rev. | Rev. Date | Purpose of revision | Orig/Dwn | Checkd | Rev'd | Apprv'd |
|------|-----------|---------------------|----------|--------|-------|---------|
| 0 | NOV 2016 | ES Publication | HM | PS | PS | ENG |

JACOBS
 66 Belford Street, Glasgow, G2 7NK, UK
 Tel: +44(0)141 243 8000 Fax: +44(0)141 226 3109
 www.jacobs.com



Drawing title
**Figure 4.1c
 Environmental Statement
 The Proposed Scheme**

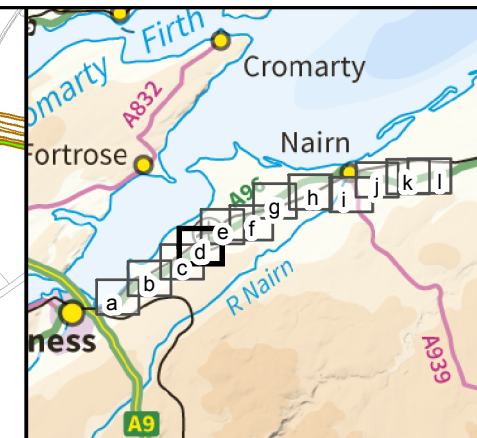
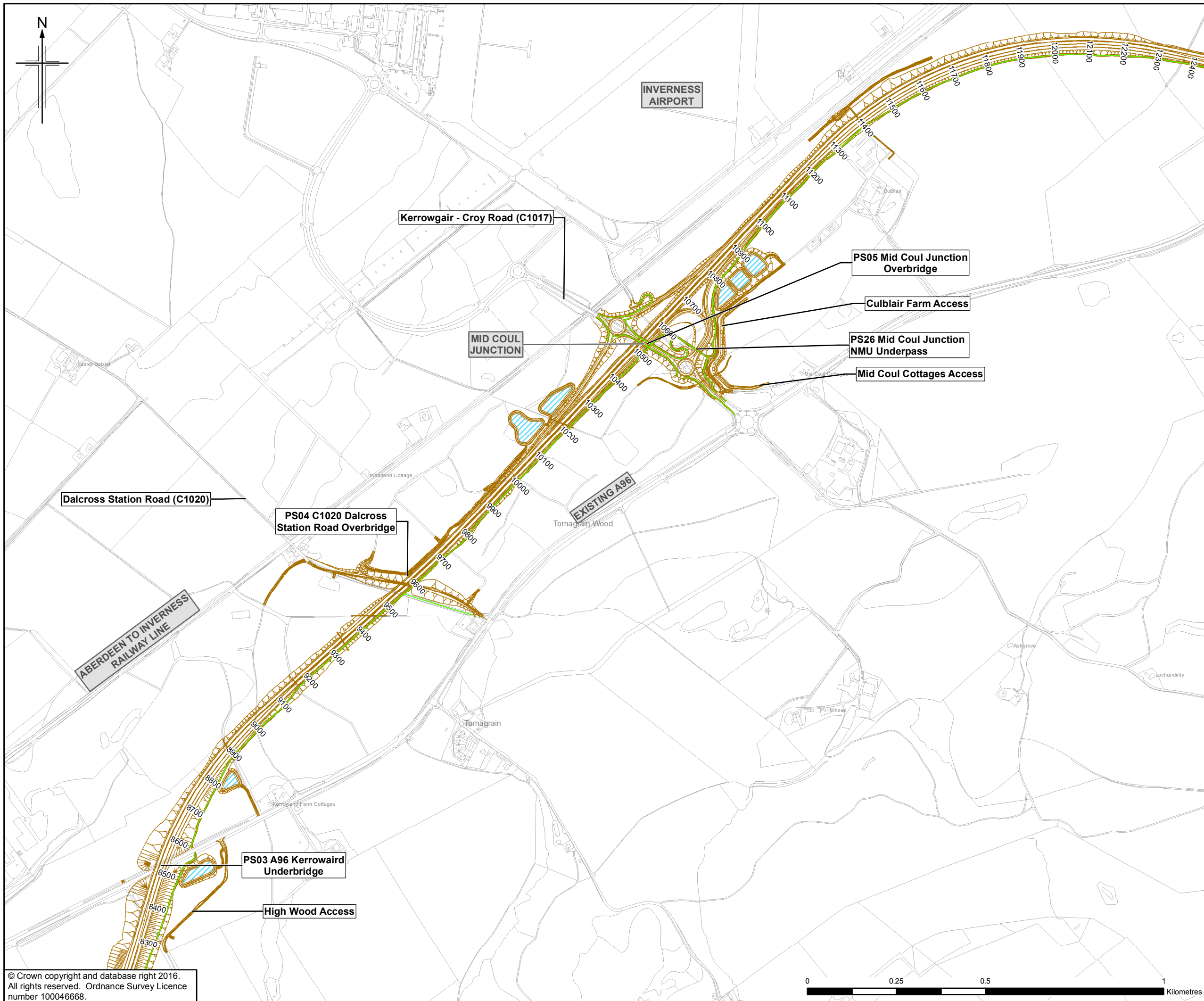
Sheet 3 of 12

| | | |
|----------------|-------------------------|--------------|
| Drawing Status | FINAL | |
| Scale | 1:10,000 @ A3 | DO NOT SCALE |
| Jacobs No. | B2103500 | |
| BIM No. | | |
| Drawing number | B2103500/EN/EIA/DR/401c | Rev 0 |

This drawing is not to be used in whole or part other than for the intended purpose and project as defined on this drawing. Refer to the contract for full terms and conditions.

© Crown copyright and database right 2016.
 All rights reserved. Ordnance Survey Licence number 100046668.





- Legend**
- Proposed Scheme (as per Draft Orders)
 - ▭ SUDS (e.g. Basin or Pond)*
 - Shared Use Path for Non-Motorised Users (NMU)

* Actual shape of pond/basin will be subject to detailed design

| Rev. | Rev. Date | Purpose of revision | Orig/Dwn | Check'd | Rev'd | Appr'd |
|------|-----------|---------------------|----------|---------|-------|--------|
| 0 | NOV 2016 | ES Publication | HM | PS | PS | ENG |

JACOBS
 66 Belford Street, Glasgow, G2 7NK, UK
 Tel: +44(0)141 243 8000 Fax: +44(0)141 226 3109
 www.jacobs.com

Client

 TRANSPORT SCOTLAND
 COMHDAIL ALBA

Project

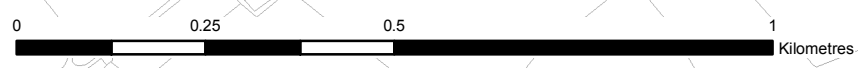
A96
 DUALLING
 INVERNESS TO NAIRN
 (incl. Nairn Bypass)

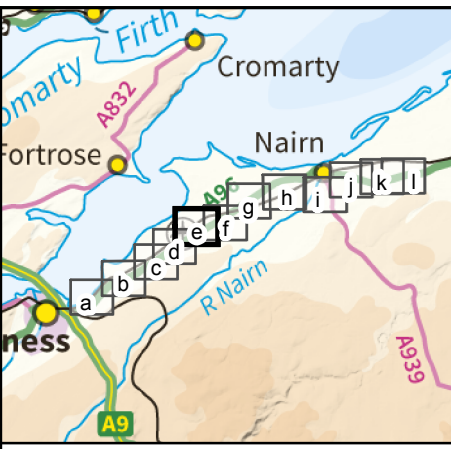
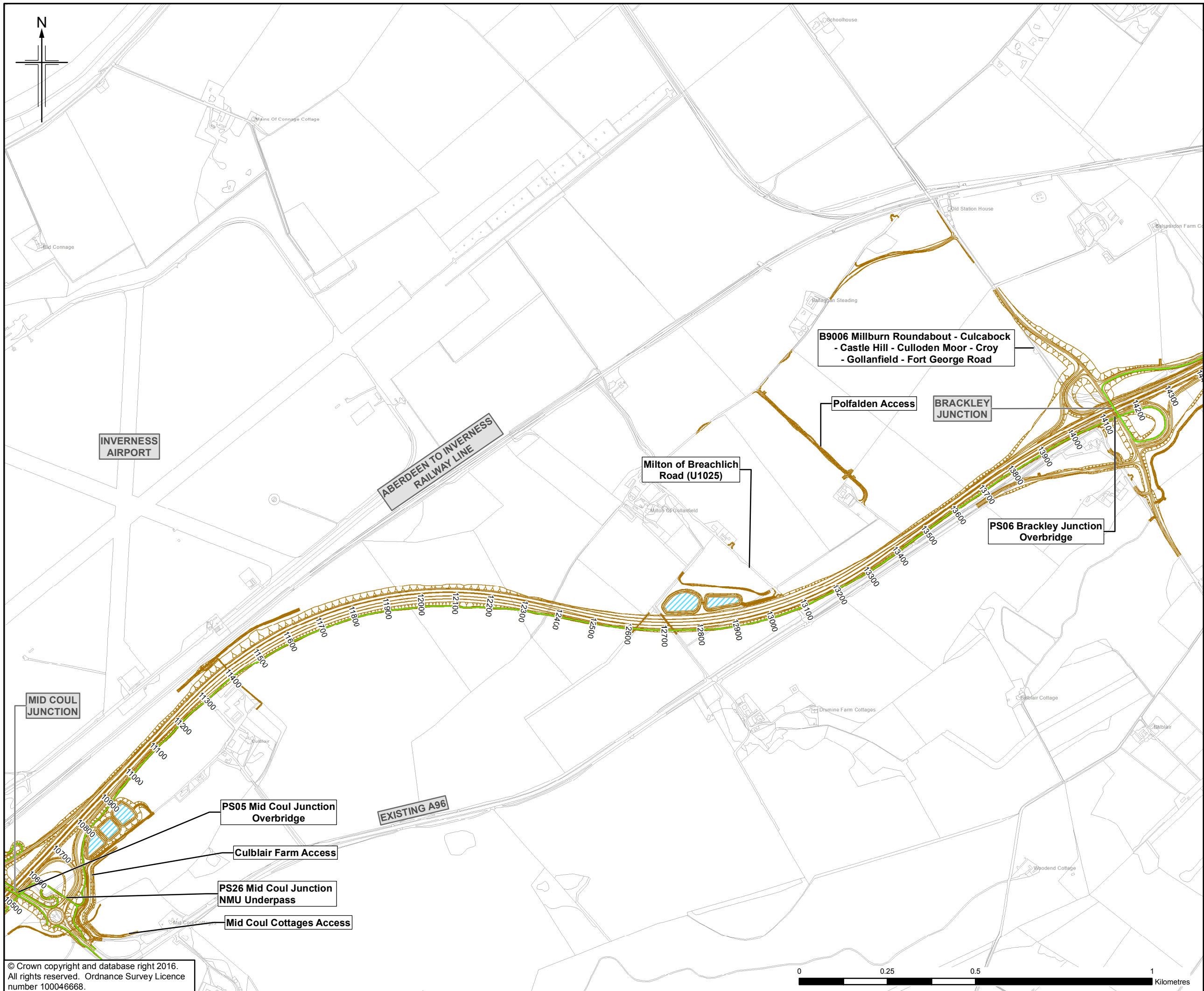
Drawing title
Figure 4.1d
Environmental Statement
The Proposed Scheme

| | | |
|----------------|-------------------------|--------------|
| Drawing Status | FINAL | |
| Scale | 1:10,000 @ A3 | DO NOT SCALE |
| Jacobs No. | B2103500 | |
| BIM No. | | |
| Drawing number | B2103500/EN/EIA/DR/401d | Rev 0 |

This drawing is not to be used in whole or part other than for the intended purpose and project as defined on this drawing. Refer to the contract for full terms and conditions.

© Crown copyright and database right 2016.
 All rights reserved. Ordnance Survey Licence number 100046668.





- Legend**
- Proposed Scheme (as per Draft Orders)
 - SUDS (e.g. Basin or Pond)*
 - Shared Use Path for Non-Motorised Users (NMU)

B9006 Millburn Roundabout - Culcabock - Castle Hill - Culloden Moor - Croy - Gollanfield - Fort George Road

Polfalden Access

BRACKLEY JUNCTION

PS06 Brackley Junction Overbridge

Milton of Breachlich Road (U1025)

INVERNESS AIRPORT

ABERDEEN TO INVERNESS RAILWAY LINE

MID COUL JUNCTION

PS05 Mid Coul Junction Overbridge

Culblair Farm Access

PS26 Mid Coul Junction NMU Underpass

Mid Coul Cottages Access

EXISTING A96

* Actual shape of pond/basin will be subject to detailed design

| Rev. | Rev. Date | Purpose of revision | Orig/Dwn | Checkd | Rev'd | Apprv'd |
|------|-----------|---------------------|----------|--------|-------|---------|
| 0 | NOV 2016 | ES Publication | HM | PS | PS | ENG |

JACOBS
 66 Belford Street, Glasgow, G2 7NK, UK
 Tel: +44(0)141 243 8000 Fax: +44(0)141 226 3109
 www.jacobs.com

Client

TRANSPORT SCOTLAND
 COMHÀHAIL ALBA

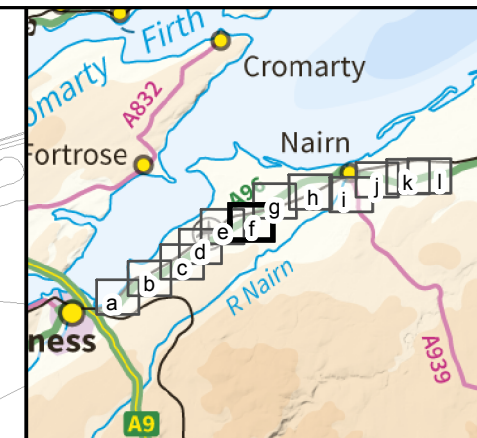
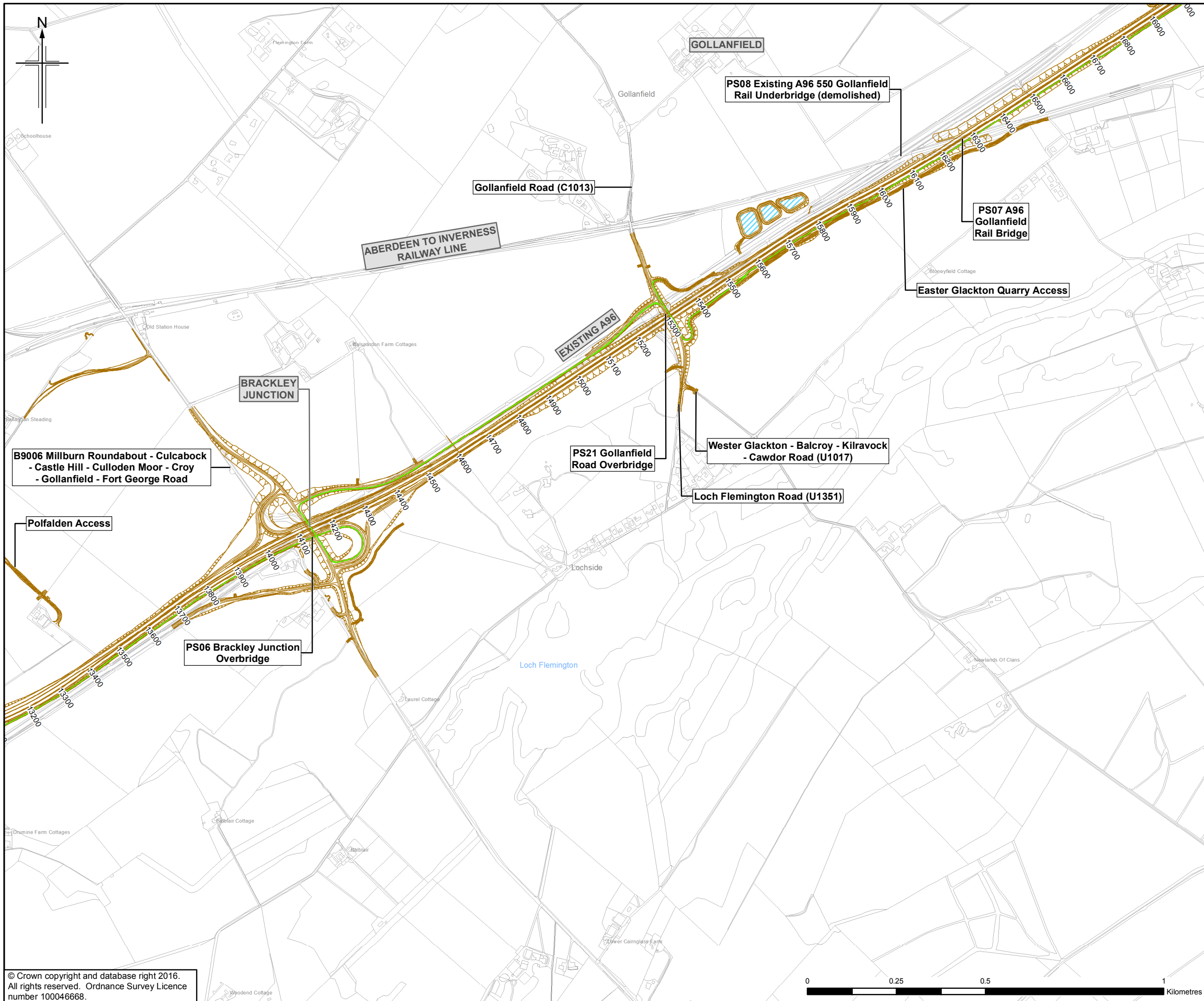
Project

A96 DUALLING
 INVERNESS TO NAIRN
 (incl. Nairn Bypass)

Drawing title
Figure 4.1e
Environmental Statement
The Proposed Scheme

| | | | |
|----------------|-------------------------|------|--------------|
| Drawing Status | FINAL | | |
| Scale | 1:10,000 | @ A3 | DO NOT SCALE |
| Jacobs No. | B2103500 | | |
| BIM No. | | | |
| Drawing number | B2103500/EN/EIA/DR/401e | Rev | 0 |

This drawing is not to be used in whole or part other than for the intended purpose and project as defined on this drawing. Refer to the contract for full terms and conditions.



- Legend**
- Proposed Scheme (as per Draft Orders)
 - SUDS (e.g. Basin or Pond)*
 - Shared Use Path for Non-Motorised Users (NMU)

* Actual shape of pond/basin will be subject to detailed design

| Rev. | Rev. Date | Purpose of revision | Orig/Dwn | Checkd | Rev'd | Apprv'd |
|------|-----------|---------------------|----------|--------|-------|---------|
| 0 | NOV 2016 | ES Publication | HM | PS | PS | ENG |

JACOBS
 55 Belford Street, Glasgow, G2 7NK, UK
 Tel: +44(0)141 243 8000 Fax: +44(0)141 226 3109
 www.jacobs.com



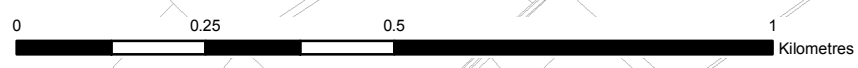
Drawing title
**Figure 4.1f
 Environmental Statement
 The Proposed Scheme**

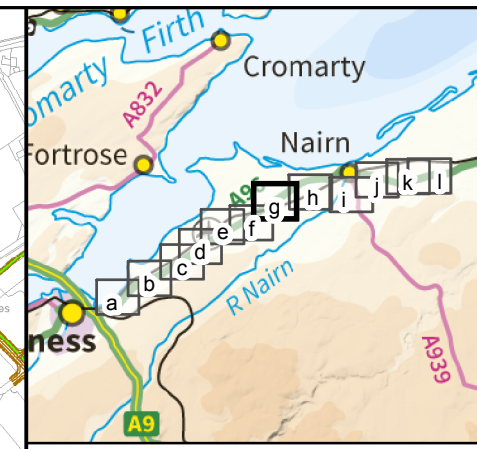
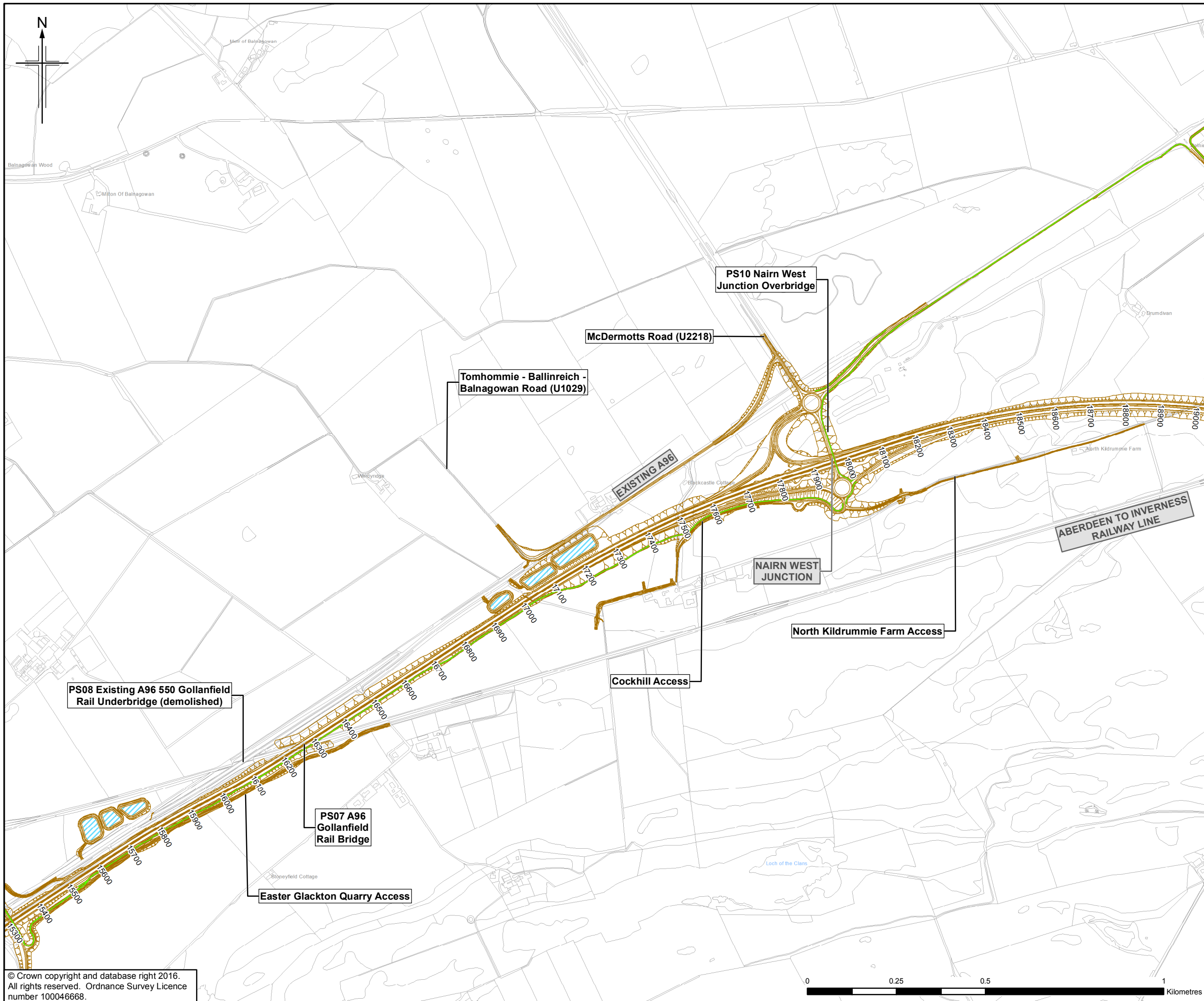
Sheet 6 of 12

| | | |
|----------------|-------------------------|--------------|
| Drawing Status | FINAL | |
| Scale | 1:10,000 @ A3 | DO NOT SCALE |
| Jacobs No. | B2103500 | |
| BIM No. | | |
| Drawing number | B2103500/EN/EIA/DR/401f | Rev 0 |

This drawing is not to be used in whole or part other than for the intended purpose and project as defined on this drawing. Refer to the contract for full terms and conditions.

© Crown copyright and database right 2016.
 All rights reserved. Ordnance Survey Licence number 100046668.





- Legend**
- Proposed Scheme (as per Draft Orders)
 - SUDS (e.g. Basin or Pond)*
 - Shared Use Path for Non-Motorised Users (NMU)

* Actual shape of pond/basin will be subject to detailed design

| Rev. | Rev. Date | Purpose of revision | Orig/Dwn | Checkd | Rev'd | Apprv'd |
|------|-----------|---------------------|----------|--------|-------|---------|
| 0 | NOV 2016 | ES Publication | HM | PS | PS | ENG |

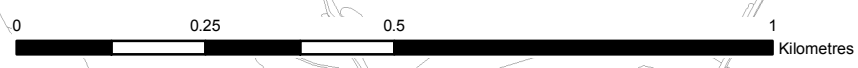
JACOBS
 55 Belford Street, Glasgow, G2 7NK, UK
 Tel: +44(0)141 243 8000 Fax: +44(0)141 226 3109
 www.jacobs.com

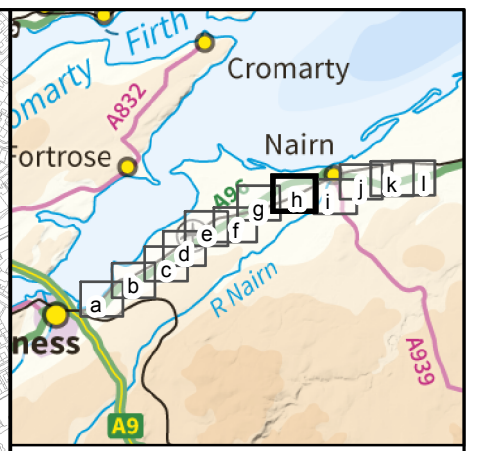
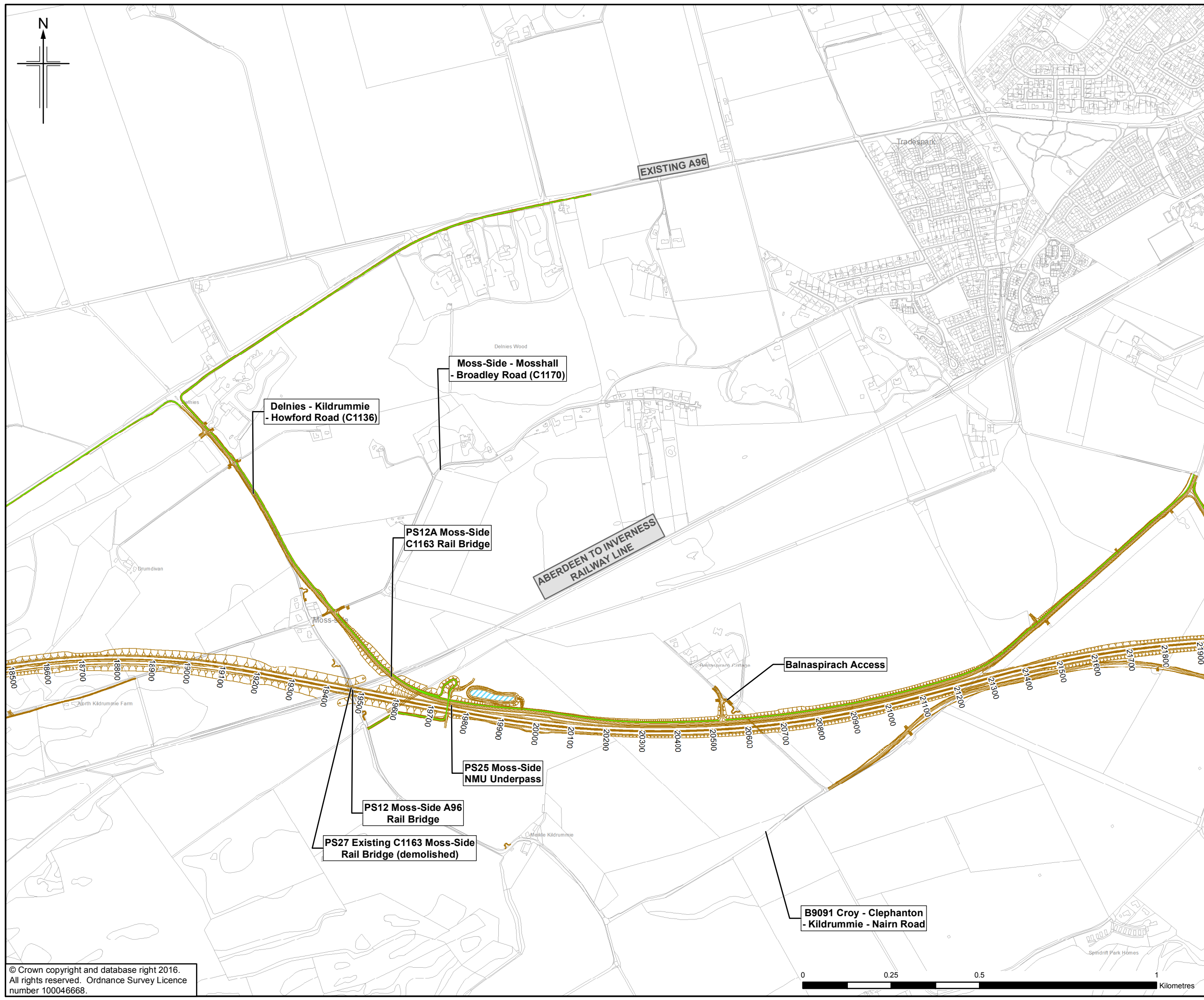
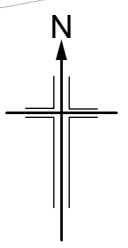





Drawing title
**Figure 4.1g
 Environmental Statement
 The Proposed Scheme**

| | | |
|----------------|-------------------------|--------------|
| Drawing Status | FINAL | |
| Scale | 1:10,000 @ A3 | DO NOT SCALE |
| Jacobs No. | B2103500 | |
| BIM No. | | |
| Drawing number | B2103500/EN/EIA/DR/401g | Rev 0 |

© Crown copyright and database right 2016.
 All rights reserved. Ordnance Survey Licence number 100046668.





- Legend**
-  Proposed Scheme (as per Draft Orders)
 -  SUDS (e.g. Basin or Pond)*
 -  Shared Use Path for Non-Motorised Users (NMU)

* Actual shape of pond/basin will be subject to detailed design

| | | | | | | |
|------|-----------|---------------------|----------|---------|-------|---------|
| 0 | NOV 2016 | ES Publication | HM | PS | PS | ENG |
| Rev. | Rev. Date | Purpose of revision | Orig/Dwn | Checked | Rev'd | Apprv'd |

JACOBS
 66 Belford Street, Glasgow, G2 7NK, UK
 Tel: +44(0)141 243 8000 Fax: +44(0)141 226 3109
 www.jacobs.com

Client



TRANSPORT SCOTLAND
COMHAIL ALBA

Project



A96
DUALLING
INVERNESS TO NAIRN
(incl. Nairn Bypass)

Drawing title

Figure 4.1h
Environmental Statement
The Proposed Scheme

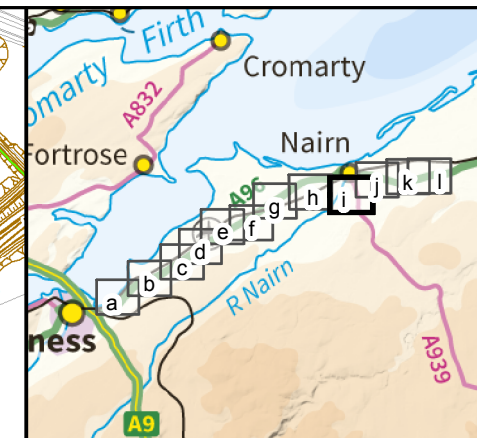
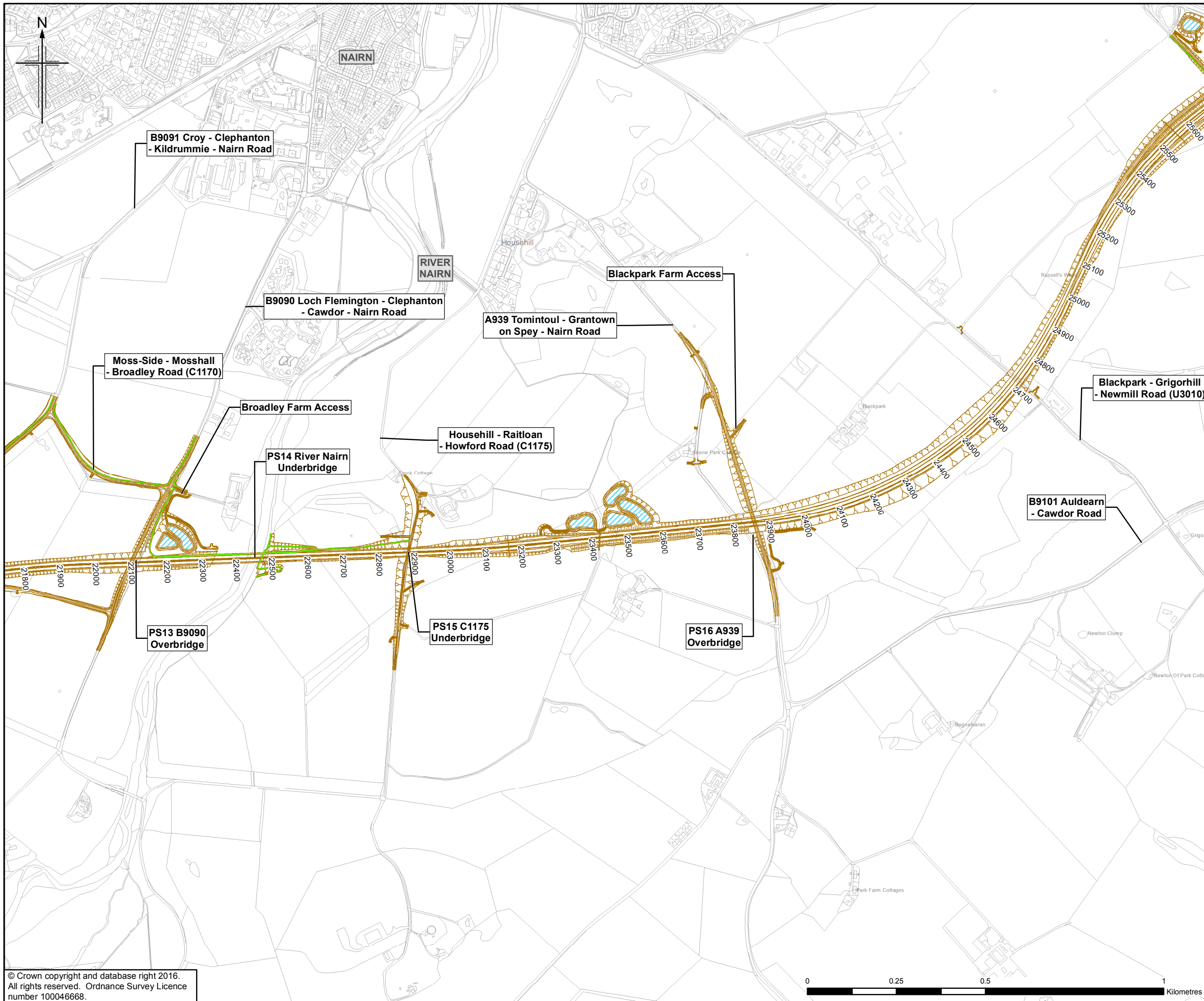
Sheet 8 of 12

| | | |
|----------------|-------------------------|--------------|
| Drawing Status | FINAL | |
| Scale | 1:10,000 @ A3 | DO NOT SCALE |
| Jacobs No. | B2103500 | |
| BIM No. | | |
| Drawing number | B2103500/EN/EIA/DR/401h | Rev 0 |

This drawing is not to be used in whole or part other than for the intended purpose and project as defined on this drawing. Refer to the contract for full terms and conditions.

© Crown copyright and database right 2016.
 All rights reserved. Ordnance Survey Licence number 100046668.





- Legend**
- Proposed Scheme (as per Draft Orders)
 - SUDS (e.g. Basin or Pond)*
 - Shared Use Path for Non-Motorised Users (NMU)

* Actual shape of pond/basin will be subject to detailed design

| Rev. | Rev. Date | ES Publication | HM | PS | PS | ENG |
|------|-----------|---------------------|----------|--------|-------|---------|
| 0 | NOV 2016 | | | | | |
| | | Purpose of revision | Orig/Dwn | Checkd | Rev'd | Apprv'd |

JACOBS
 66 Belford Street, Glasgow, G2 7NK, UK
 Tel: +44(0)141 243 8000 Fax: +44(0)141 226 3109
 www.jacobs.com

Client

 TRANSPORT SCOTLAND
 COMHAIL ALBA

Project

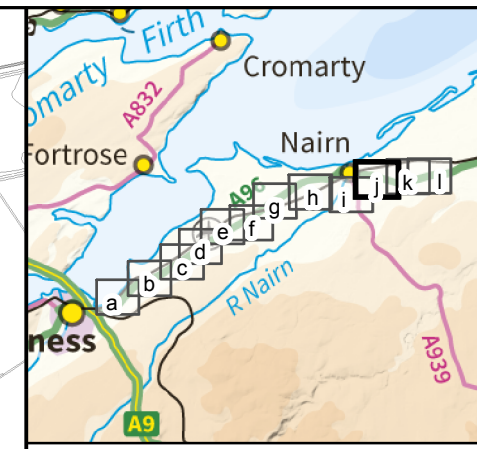
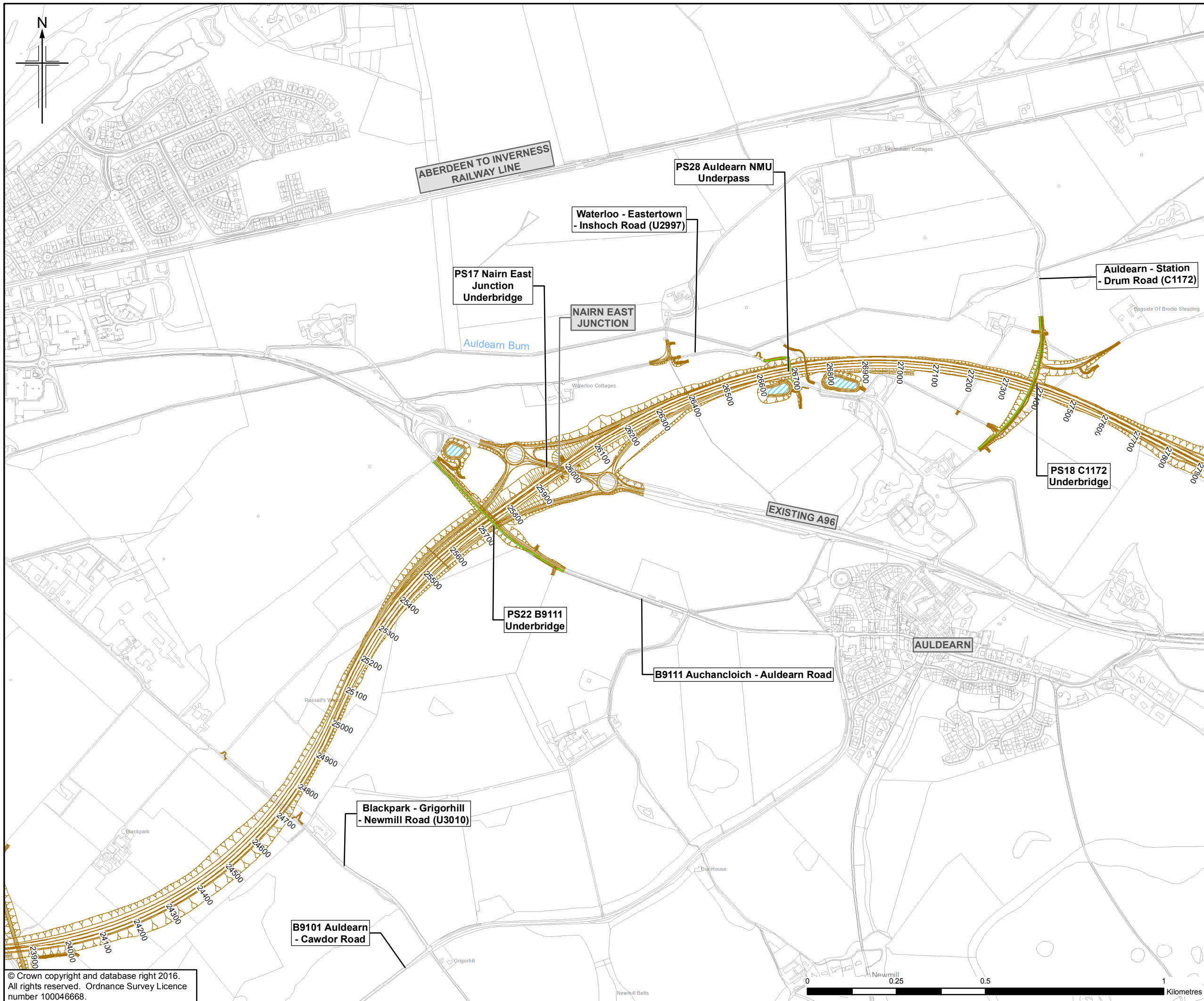
A96
 DUALLING
 INVERNESS TO NAIRN
 (incl. Nairn Bypass)

Drawing title
Figure 4.1
Environmental Statement
The Proposed Scheme

Sheet 9 of 12

| | | |
|----------------|-------------------------|--------------|
| Drawing Status | FINAL | |
| Scale | 1:10,000 @ A3 | DO NOT SCALE |
| Jacobs No. | B2103500 | |
| BIM No. | | |
| Drawing number | B2103500/EN/EIA/DR/401i | Rev 0 |

This drawing is not to be used in whole or part other than for the intended purpose and project as defined on this drawing. Refer to the contract for full terms and conditions.



- Legend**
- Proposed Scheme (as per Draft Orders)
 - ▨ SUDS (e.g. Basin or Pond)*
 - Shared Use Path for Non-Motorised Users (NMU)

* Actual shape of pond/basin will be subject to detailed design

| Rev. | Rev. Date | Purpose of revision | Orig/Dwn | Check'd | Rev'd | Appr'd |
|------|-----------|---------------------|----------|---------|-------|--------|
| 0 | NOV 2016 | ES Publication | HM | PS | PS | ENG |

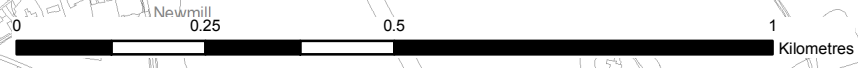
JACOBS
 66 Balfour Street, Glasgow, G2 7NK, UK.
 Tel: +44(0)141 243 8000 Fax: +44(0)141 226 3109
 www.jacobs.com

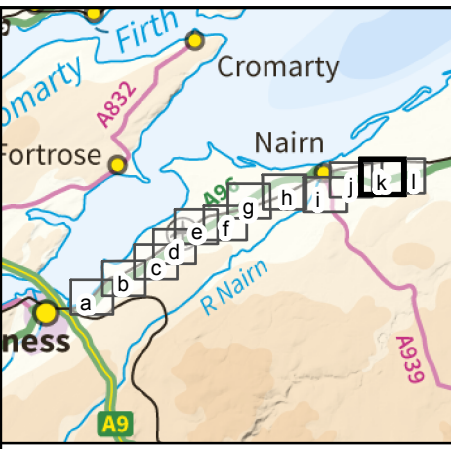
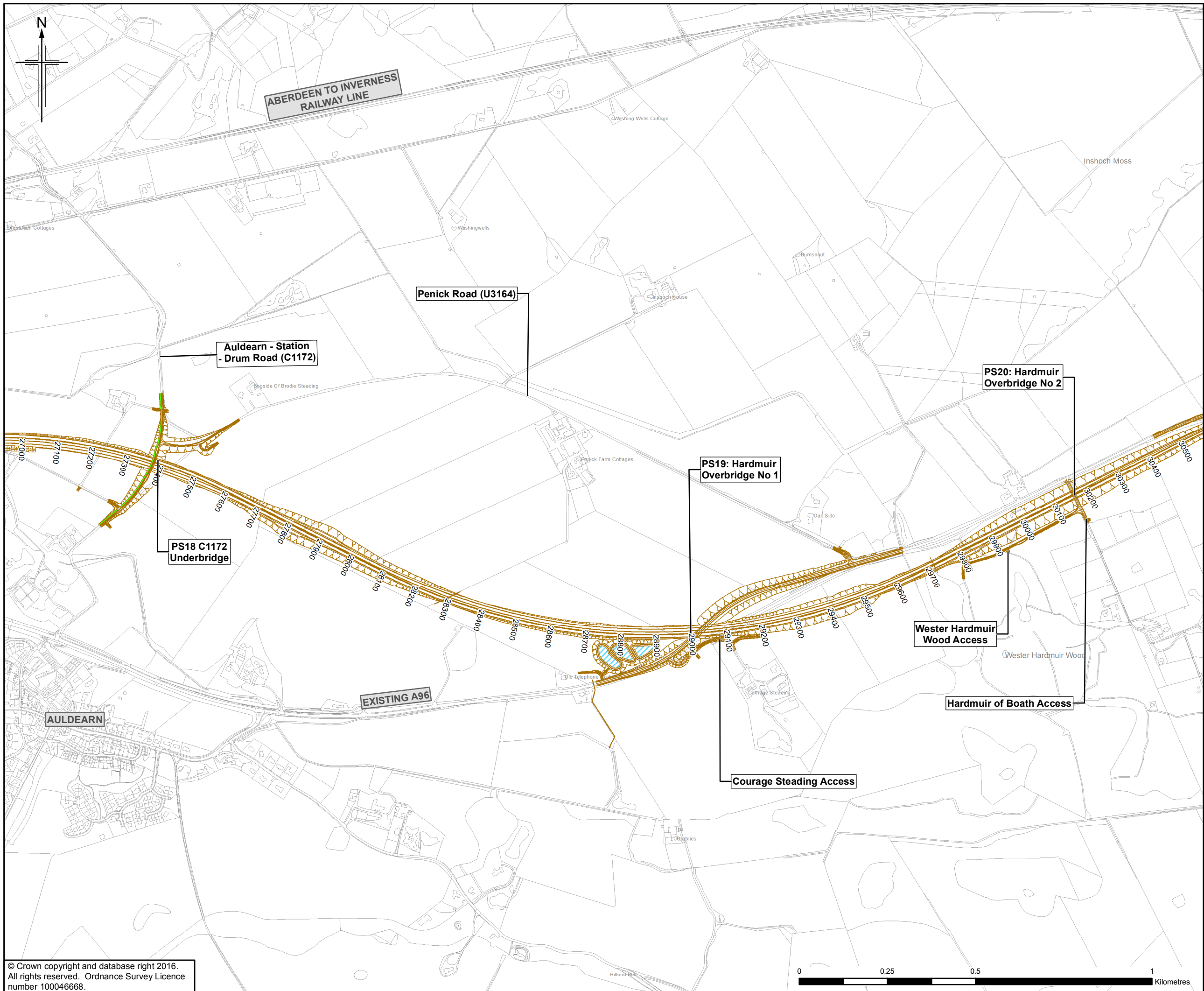


Drawing title
Figure 4.1j
Environmental Statement
The Proposed Scheme

| | | | |
|----------------|-------------------------|--------------|----------------|
| Drawing Status | FINAL | | Sheet 10 of 12 |
| Scale | 1:10,000 @ A3 | DO NOT SCALE | |
| Jacobs No. | B2103500 | | |
| BIM No. | | | |
| Drawing number | B2103500/EN/EIA/DR/401j | Rev | 0 |

© Crown copyright and database right 2016.
 All rights reserved. Ordnance Survey Licence number 100046668.





- Legend**
- Proposed Scheme (as per Draft Orders)
 - ▭ SUDS (e.g. Basin or Pond)*
 - Shared Use Path for Non-Motorised Users (NMU)

* Actual shape of pond/basin will be subject to detailed design

| Rev. | Rev. Date | Purpose of revision | Orig/Dwn | Checkd | Rev'd | Apprv'd |
|------|-----------|---------------------|----------|--------|-------|---------|
| 0 | NOV 2016 | ES Publication | HM | PS | PS | ENG |

JACOBS
 55 Bedford Street, Glasgow, G2 7NK, UK.
 Tel: +44(0)141 243 8000 Fax: +44(0)141 226 3109
 www.jacobs.com



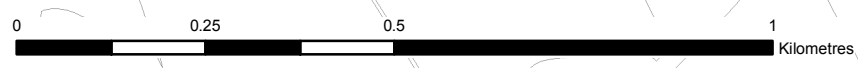
Drawing title
**Figure 4.1k
 Environmental Statement
 The Proposed Scheme**

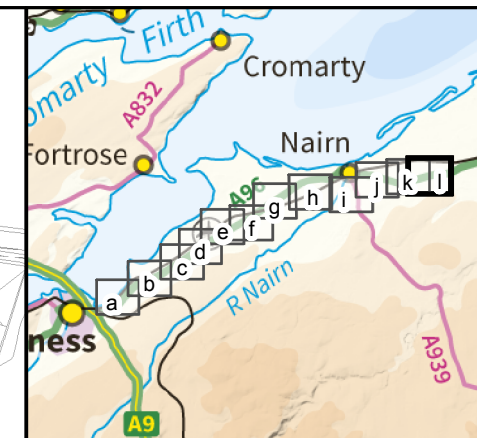
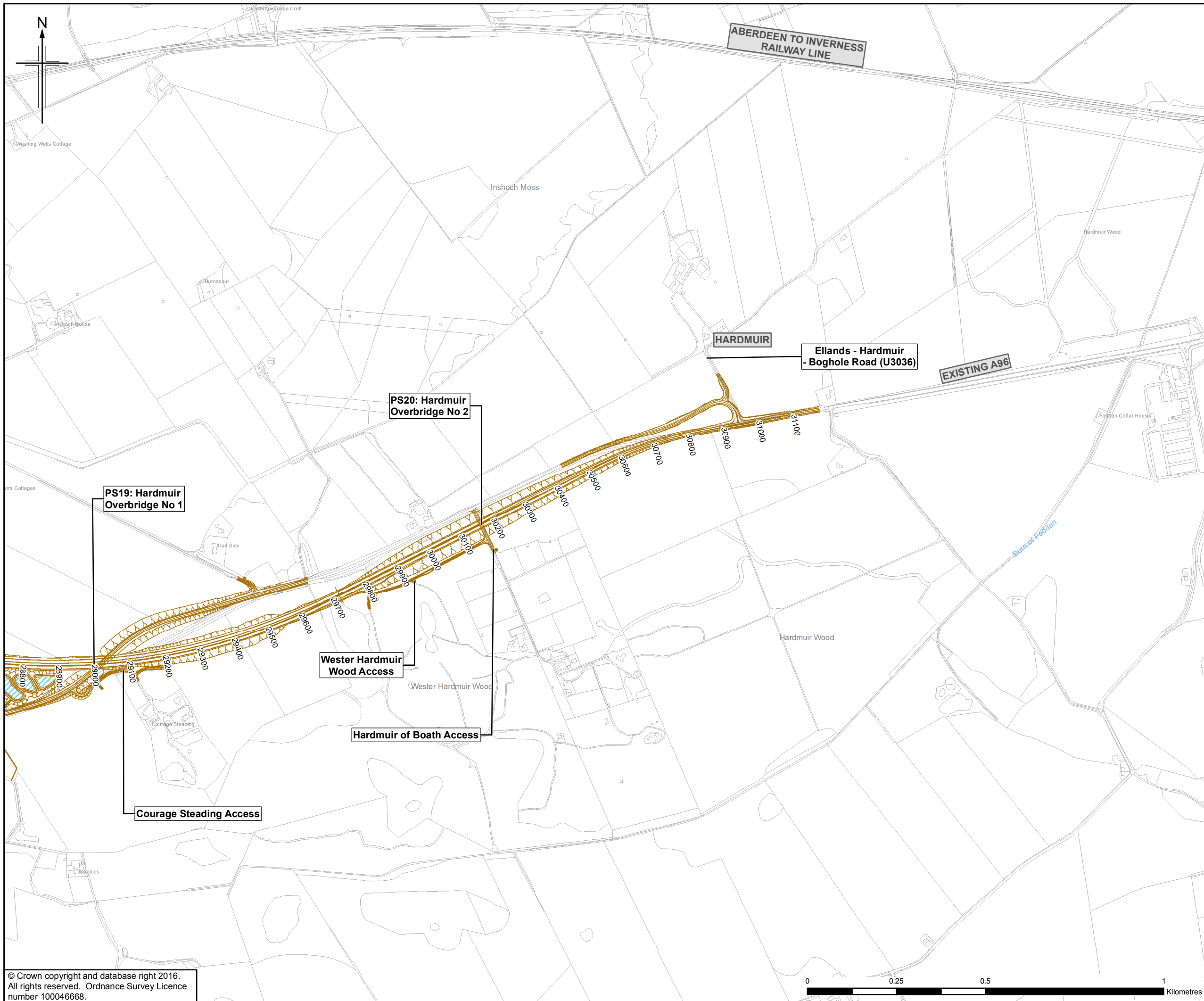
Sheet 11 of 12

| | | |
|----------------|-------------------------|--------------|
| Drawing Status | FINAL | |
| Scale | 1:10,000 @ A3 | DO NOT SCALE |
| Jacobs No. | B2103500 | |
| BIM No. | | |
| Drawing number | B2103500/EN/EIA/DR/401k | Rev 0 |

This drawing is not to be used in whole or part other than for the intended purpose and project as defined on this drawing. Refer to the contract for full terms and conditions.

© Crown copyright and database right 2016.
 All rights reserved. Ordnance Survey Licence number 100046668.





- Legend**
- Proposed Scheme (as per Draft Orders)
 - SUDS (e.g. Basin or Pond)*
 - Shared Use Path for Non-Motorised Users (NMU)

* Actual shape of pond/basin will be subject to detailed design

| | | | | | | |
|------|-----------|---------------------|----------|---------|-------|---------|
| 0 | NOV 2016 | ES Publication | HM | PS | PS | ENG |
| Rev. | Rev. Date | Purpose of revision | Orig/Dwn | Checked | Rev'd | Apprv'd |

JACOBS
 66 Balfour Street, Glasgow, G2 7NK, UK
 Tel: +44(0)141 243 8000 Fax: +44(0)141 226 3109
 www.jacobs.com



Drawing title
**Figure 4.11
 Environmental Statement
 The Proposed Scheme**

| | | | |
|----------------|-------------------------|--------------|----------------|
| Drawing Status | FINAL | | Sheet 12 of 12 |
| Scale | 1:10,000 @ A3 | DO NOT SCALE | |
| Jacobs No. | B2103500 | | |
| BIM No. | | | |
| Drawing number | B2103500/EN/EIA/DR/4011 | Rev 0 | |

© Crown copyright and database right 2016.
 All rights reserved. Ordnance Survey Licence number 100046668.

