

- Legend**
- Proposed Scheme (as per Draft Orders)
  - SUDS (e.g. Basin or Pond)\*
  - Calculation Area
  - Sample Receptor

Location Name**	
Do Minimum Baseline Year	Do Minimum Future Year
Do Minimum Baseline Year	Do Something Baseline Year
Do Minimum Baseline Year	Do Something Future Year
Significance of Impact (DMB vs DMF)	
Significance of Impact (DMB vs DSB)	
Significance of Impact (DMB vs DSF)	

DMB = Do Minimum Baseline Year  
 DMF = Do Minimum Future Year  
 DSB = Do Something Baseline Year  
 DSF = Do Something Future Year

\* Actual shape of pond/basin will be subject to detailed design  
 \*\* Predicted noise levels at the least beneficial façade for each scenario comparison

Rev.	Rev. Date	Purpose of revision	Orig/Dwnl	Checkd	Rev'd	Apprv'd
0	NOV 2016	BB Publication	KA	KF	BMCK	EHO

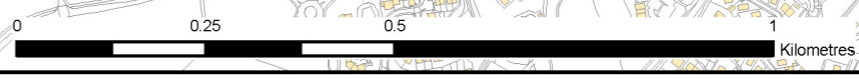
**JACOBS**  
 36 Belford Street, Glasgow, G2 7HX, UK  
 Tel: +44(0)141 243 8000 Fax: +44(0)141 226 3109  
 www.jacobs.com

Client  
  
 TRANSPORT SCOTLAND  
 COMHDAHL ALBA

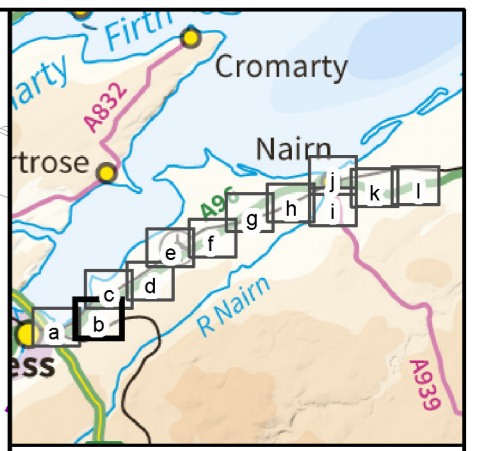
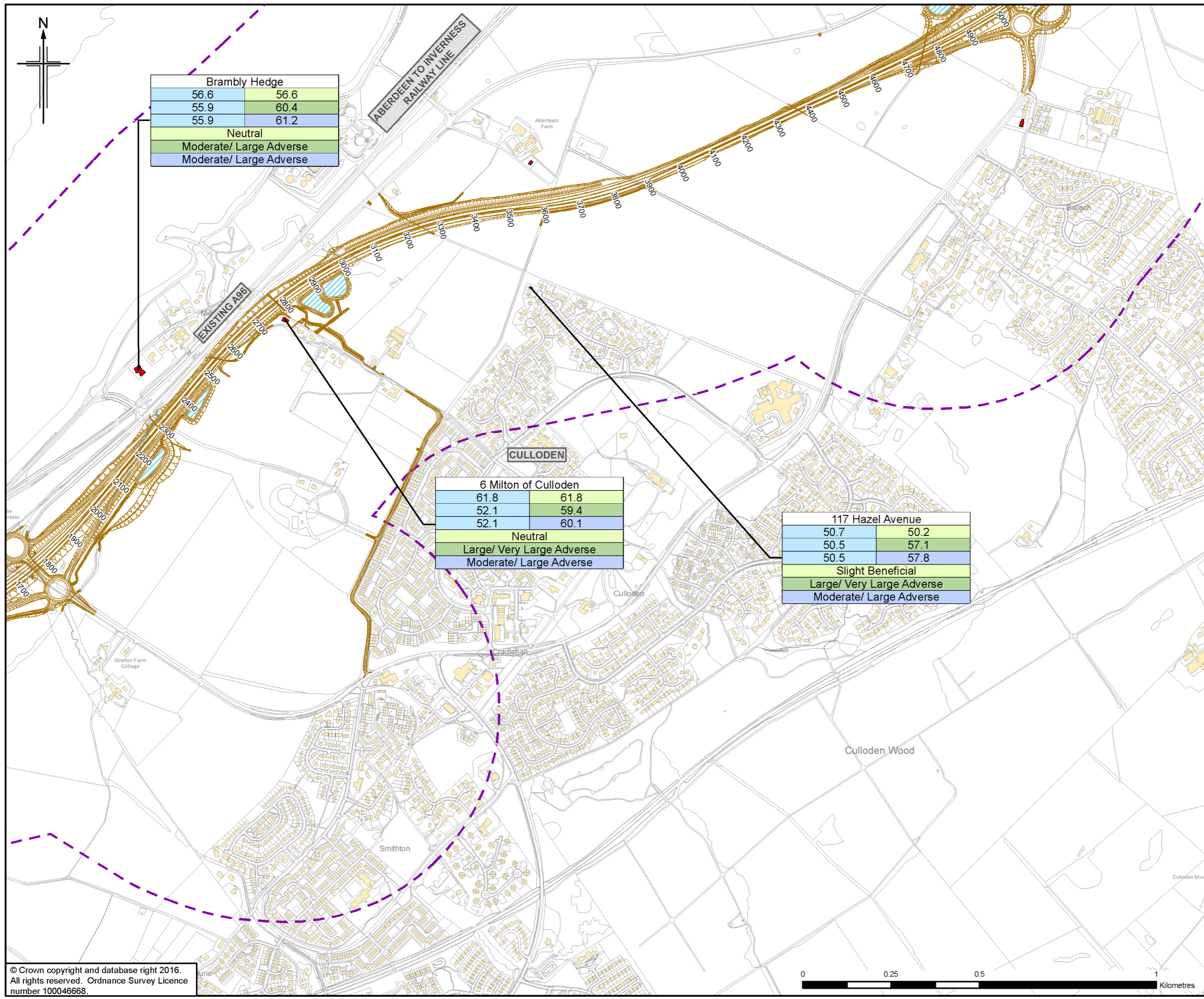
Project  
  
**A96**  
 DUALLING  
 INVERNESS TO NAIRN  
 (Incl. Nairn Bypass)

Drawing title  
**Figure 8.14a**  
**Environmental Statement**  
**Sample Receptor Predicted Daytime Noise Levels**  
**(Ground Floor)**

Drawing Status	FINAL		Sheet 1 of 12
Scale	1:10,000	@ A3	DO NOT SCALE
Jacobs No.	B2103500		
BIM No.			
Drawing number	B2103500/EN/EIA/DR/814a	Rev	0







**Legend**

- Proposed Scheme (as per Draft Orders)
- SUDS (e.g. Basin or Pond)\*
- Calculation Area
- Sample Receptor

Location Name**	
Do Minimum Baseline Year	Do Minimum Future Year
Do Minimum Baseline Year	Do Something Baseline Year
Do Minimum Baseline Year	Do Something Future Year
Significance of Impact (DMB vs DMF)	
Significance of Impact (DMB vs DSB)	
Significance of Impact (DMB vs DSF)	

DMB = Do Minimum Baseline Year  
 DMF = Do Minimum Future Year  
 DSB = Do Something Baseline Year  
 DSF = Do Something Future Year

\* Actual shape of pond/basin will be subject to detailed design  
 \*\* Predicted noise levels at the least beneficial façade for each scenario comparison

Rev.	Rev. Date	Purpose of revision	OrigDwnl	Checkd	Rev'd	Apprv'd
0	NOV 2016	ES Preparation	KA	KF	BMCK	EHG

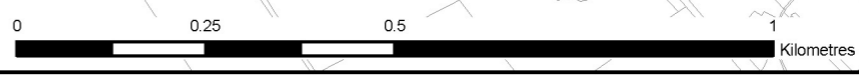
**JACOBS**  
 36 Belford Street, Glasgow, G2 7HX, UK  
 Tel: +44(0)141 243 8000 Fax: +44(0)141 226 3109  
 www.jacobs.com



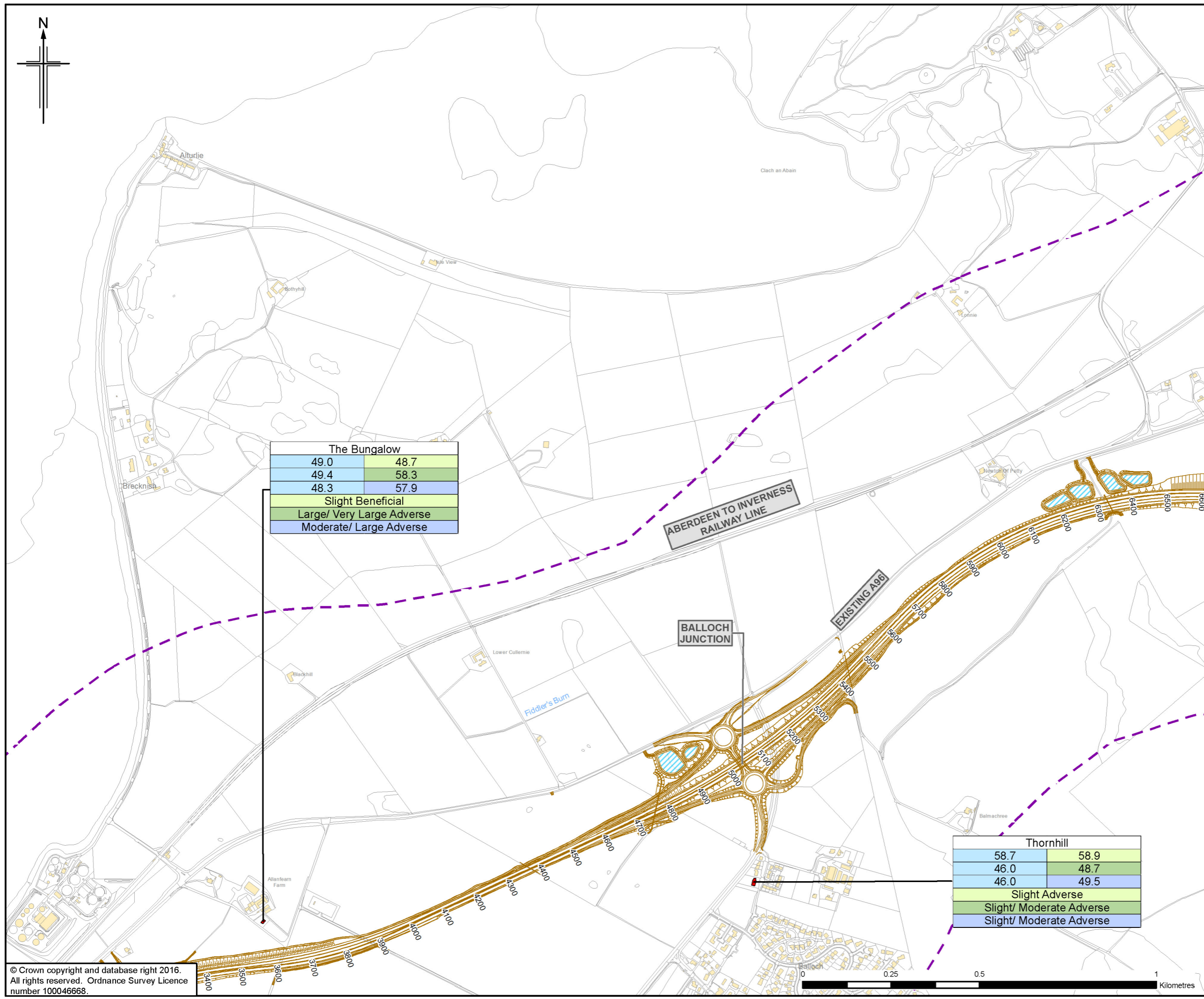
Drawing title: **Figure 8.14b Environmental Statement Sample Receptor Predicted Daytime Noise Levels (Ground Floor)**

Drawing Status	FINAL		Sheet 2 of 12
Scale	1:10,000 @ A3	DO NOT SCALE	
Jacobs No.	B2103500		
BIM No.			
Drawing number	B2103500/EN/EIA/DR/814b	Rev	0

This drawing is not to be used in whole or part other than for the intended purpose and project as defined on this drawing. Refer to the contract for full terms and conditions.

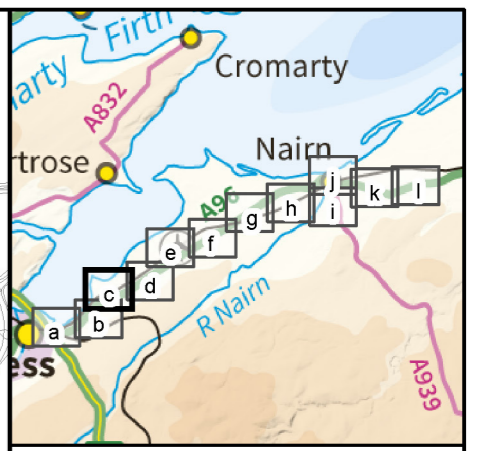






The Bungalow	
49.0	48.7
49.4	58.3
48.3	57.9
Slight Beneficial	
Large/ Very Large Adverse	
Moderate/ Large Adverse	

Thornhill	
58.7	58.9
46.0	48.7
46.0	49.5
Slight Adverse	
Slight/ Moderate Adverse	
Slight/ Moderate Adverse	



- Legend**
- Proposed Scheme (as per Draft Orders)
  - SUDS (e.g. Basin or Pond)\*
  - Calculation Area
  - Sample Receptor

Location Name**	
Do Minimum Baseline Year	Do Minimum Future Year
Do Minimum Baseline Year	Do Something Baseline Year
Do Minimum Baseline Year	Do Something Future Year
Significance of Impact (DMB vs DMF)	
Significance of Impact (DMB vs DSB)	
Significance of Impact (DMB vs DSF)	

DMB = Do Minimum Baseline Year  
 DMF = Do Minimum Future Year  
 DSB = Do Something Baseline Year  
 DSF = Do Something Future Year

\* Actual shape of pond/basin will be subject to detailed design  
 \*\* Predicted noise levels at the least beneficial façade for each scenario comparison

Rev.	Rev. Date	Purpose of revision	Orig'Dwnl	Check'd	Rev'd	Apprv'd
0	NOV 2016	ES Preparation	KA	KF	BMCK	EHG

**JACOBS**  
 36 Belford Street, Glasgow, G2 7HX, UK  
 Tel: +44(0)141 243 8000 Fax: +44(0)141 226 3109  
 www.jacobs.com

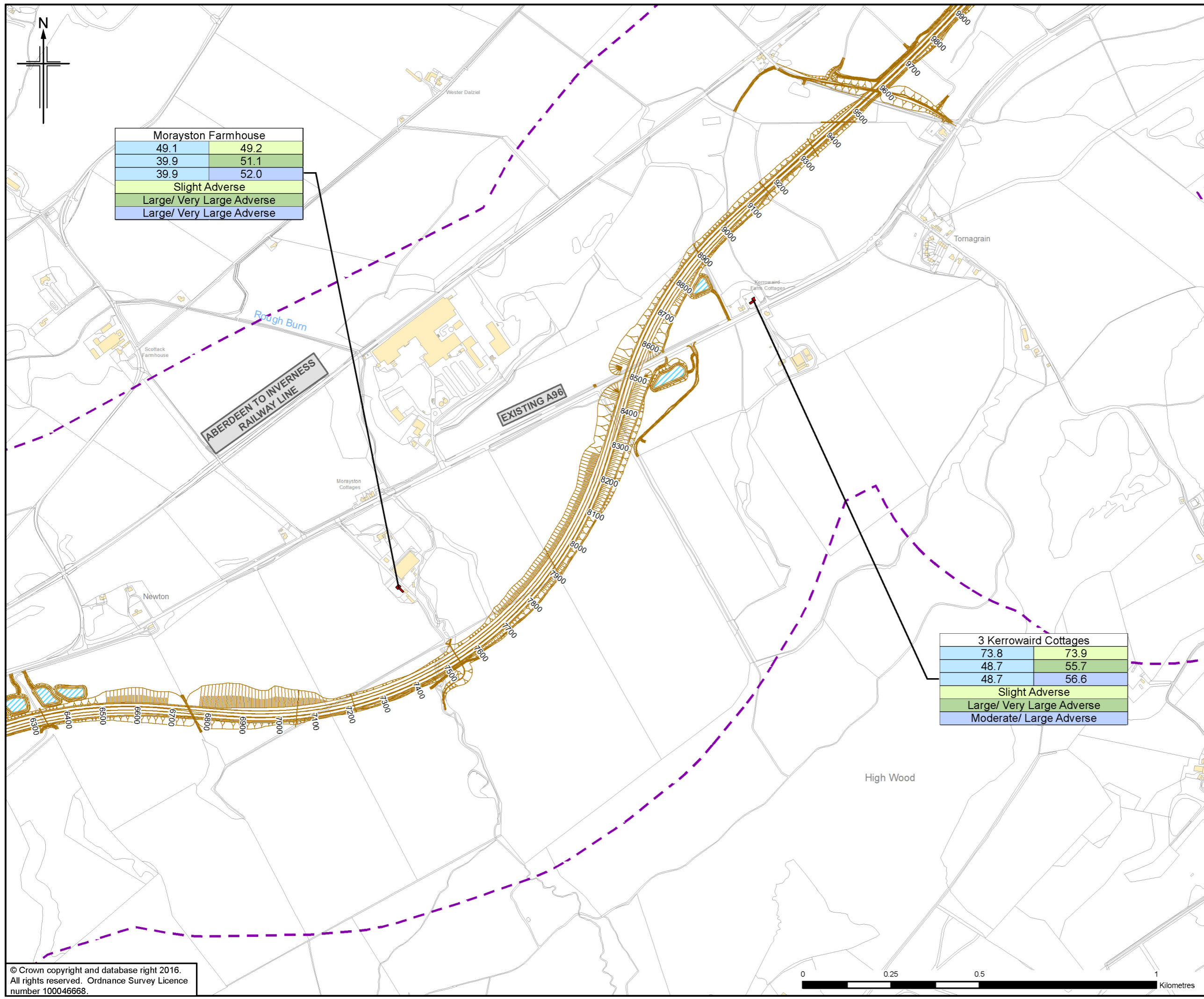
Client  
  
 TRANSPORT SCOTLAND  
 COMHDAHL ALBA

Project  
  
**A96**  
 DUALLING  
 INVERNESS TO NAIRN  
 (Incl. Nairn Bypass)

Drawing title  
**Figure 8.14c**  
**Environmental Statement**  
**Sample Receptor Predicted Daytime Noise Levels**  
**(Ground Floor)**

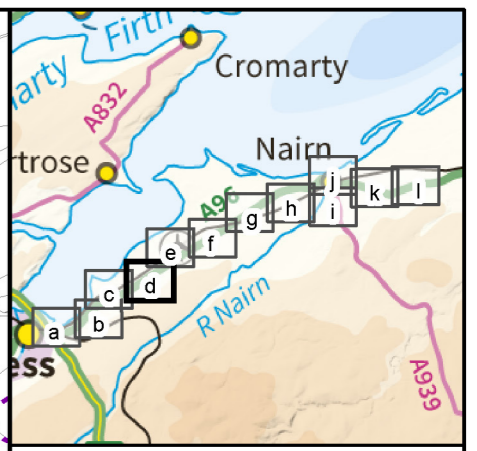
Drawing Status	FINAL		Sheet 3 of 12
Scale	1:10,000 @ A3	DO NOT SCALE	
Jacobs No.	B2103500		
BIM No.			
Drawing number	B2103500/EN/EIA/DR/814c	Rev	0





Morayston Farmhouse	
49.1	49.2
39.9	51.1
39.9	52.0
Slight Adverse	
Large/ Very Large Adverse	
Large/ Very Large Adverse	

3 Kerrowaird Cottages	
73.8	73.9
48.7	55.7
48.7	56.6
Slight Adverse	
Large/ Very Large Adverse	
Moderate/ Large Adverse	



- Legend**
- Proposed Scheme (as per Draft Orders)
  - SUDS (e.g. Basin or Pond)\*
  - Calculation Area
  - Sample Receptor

Location Name**	
Do Minimum Baseline Year	Do Minimum Future Year
Do Minimum Baseline Year	Do Something Baseline Year
Do Minimum Baseline Year	Do Something Future Year
Significance of Impact (DMB vs DMF)	
Significance of Impact (DMB vs DSB)	
Significance of Impact (DMB vs DSF)	

DMB = Do Minimum Baseline Year  
 DMF = Do Minimum Future Year  
 DSB = Do Something Baseline Year  
 DSF = Do Something Future Year

\* Actual shape of pond/basin will be subject to detailed design  
 \*\* Predicted noise levels at the least beneficial façade for each scenario comparison

Rev.	Rev. Date	Purpose of revision	Orig/Dwnl	Checkd	Rev'd	Apprv'd
0	NOV 2016	ES Preparation	KA	KF	BMCK	EHO

**JACOBS**  
 36 Belford Street, Glasgow, G2 7NE, UK  
 Tel: +44(0)141 243 8000 Fax: +44(0)141 226 3109  
 www.jacobs.com

Client: **TRANSPORT SCOTLAND**  
 COMHDAE ALBA

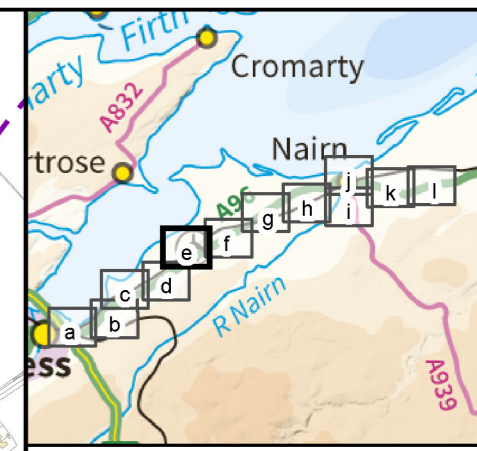
Project: **A96 DUALLING**  
 INVERNESS TO NAIRN  
 (Incl. Nairn Bypass)

Drawing title: **Figure 8.14d Environmental Statement Sample Receptor Predicted Daytime Noise Levels (Ground Floor)**

Sheet 4 of 12		
Drawing Status	FINAL	
Scale	1:10,000 @ A3	DO NOT SCALE
Jacobs No.	B2103500	
BIM No.		
Drawing number	B2103500/EN/EIA/DR/814d	Rev 0

This drawing is not to be used in whole or part other than for the intended purpose and project as defined on this drawing. Refer to the contract for full terms and conditions.





- Legend**
- Proposed Scheme (as per Draft Orders)
  - ▭ SUDS (e.g. Basin or Pond)\*
  - - - Calculation Area
  - Sample Receptor

Location Name**	
Do Minimum Baseline Year	Do Minimum Future Year
Do Minimum Baseline Year	Do Something Baseline Year
Do Minimum Baseline Year	Do Something Future Year
Significance of Impact (DMB vs DMF)	
Significance of Impact (DMB vs DSB)	
Significance of Impact (DMB vs DSF)	

DMB = Do Minimum Baseline Year  
 DMF = Do Minimum Future Year  
 DSB = Do Something Baseline Year  
 DSF = Do Something Future Year

\* Actual shape of pond/basin will be subject to detailed design  
 \*\* Predicted noise levels at the least beneficial façade for each scenario comparison

Rev.	Rev. Date	Purpose of revision	Orig'Dwnl	Check'd	Rev'd	Apprv'd
0	NOV 2016	ES Preparation	KA	KF	BMCK	EHO

**JACOBS**  
 36 Belford Street, Glasgow, G2 7HX, UK  
 Tel: +44(0)141 243 8000 Fax: +44(0)141 226 3109  
 www.jacobs.com

Client  
  
 TRANSPORT SCOTLAND  
 COMHDAHL ALBA

Project  
  
**A96**  
 DUALLING  
 INVERNESS TO NAIRN  
 (Incl. Nairn Bypass)

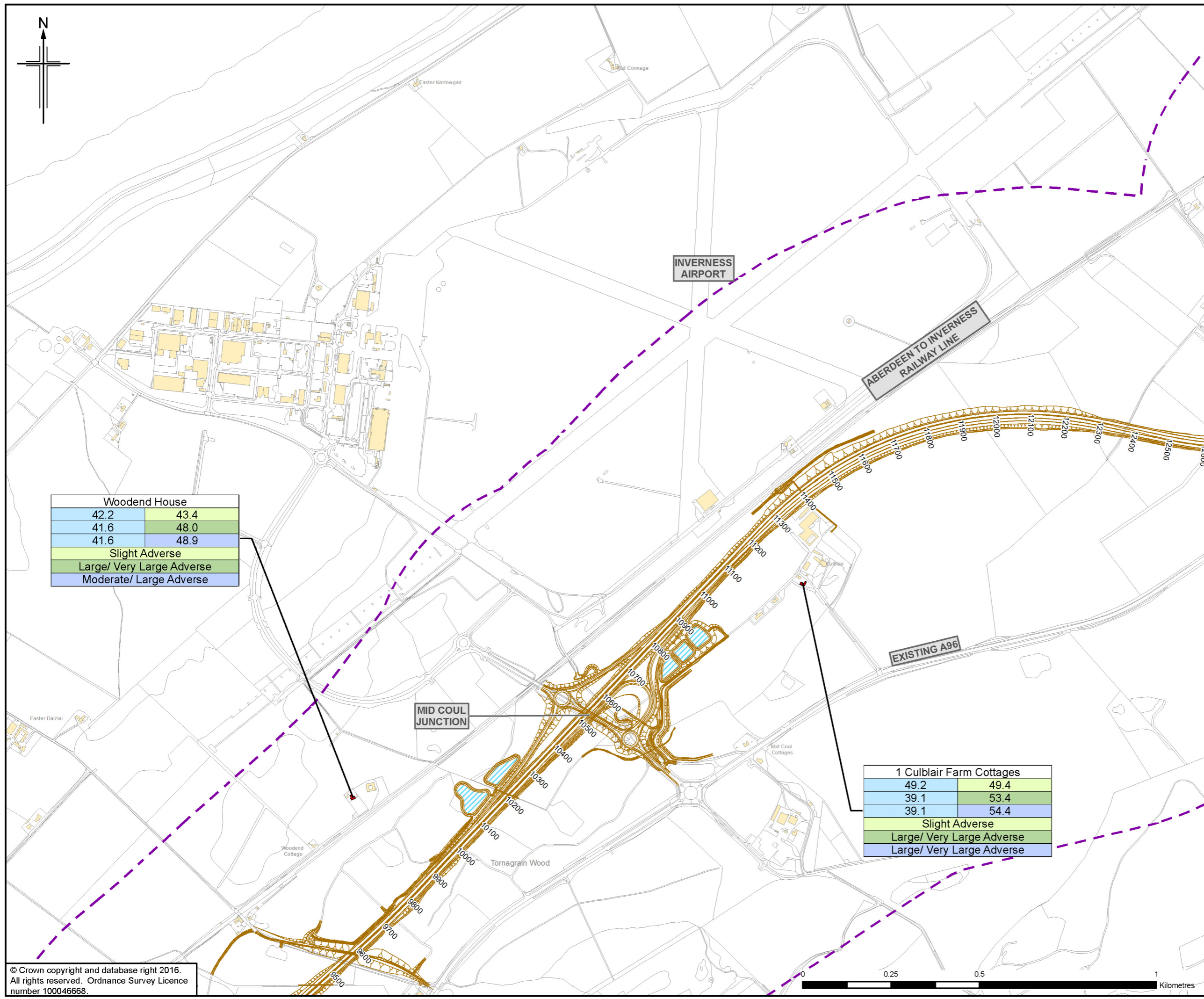
Drawing title  
**Figure 8.14e**  
**Environmental Statement**  
**Sample Receptor Predicted Daytime Noise Levels**  
**(Ground Floor)**

Drawing Status	FINAL		Sheet 5 of 12
Scale	1:10,000	@ A3	DO NOT SCALE
Jacobs No.	B2103500		
BIM No.			
Drawing number	B2103500/EN/EIA/DR/814e	Rev	0

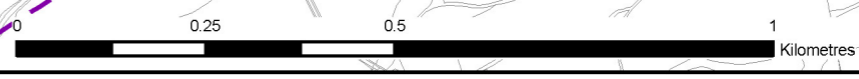
This drawing is not to be used in whole or part other than for the intended purpose and project as defined on this drawing. Refer to the contract for full terms and conditions.

Woodend House	
42.2	43.4
41.6	48.0
41.6	48.9
Slight Adverse	
Large/ Very Large Adverse	
Moderate/ Large Adverse	

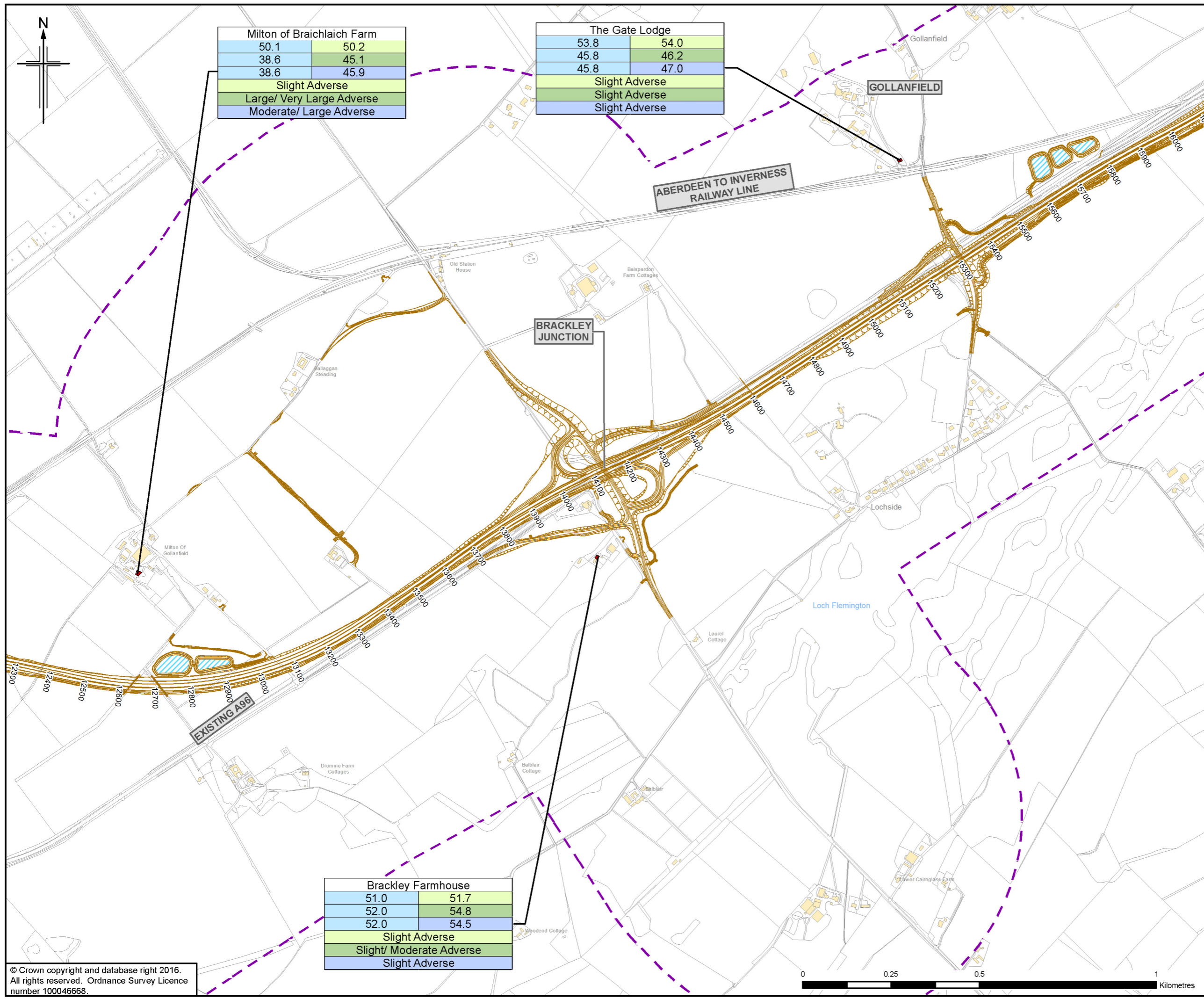
1 Culblair Farm Cottages	
49.2	49.4
39.1	53.4
39.1	54.4
Slight Adverse	
Large/ Very Large Adverse	
Large/ Very Large Adverse	



© Crown copyright and database right 2016.  
 All rights reserved. Ordnance Survey Licence number 100046668.



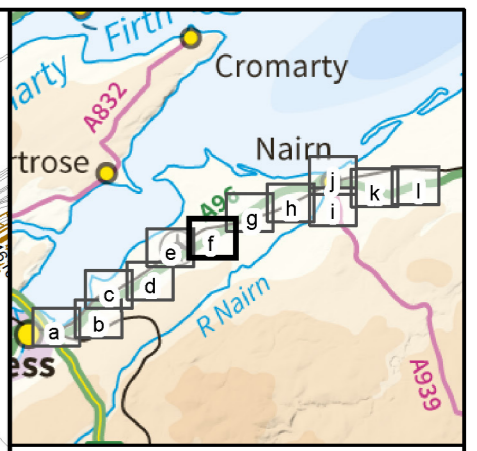




Milton of Braichlaich Farm	
50.1	50.2
38.6	45.1
38.6	45.9
Slight Adverse	
Large/ Very Large Adverse	
Moderate/ Large Adverse	

The Gate Lodge	
53.8	54.0
45.8	46.2
45.8	47.0
Slight Adverse	
Slight Adverse	
Slight Adverse	

Brackley Farmhouse	
51.0	51.7
52.0	54.8
52.0	54.5
Slight Adverse	
Slight/ Moderate Adverse	
Slight Adverse	



- Legend**
- Proposed Scheme (as per Draft Orders)
  - SUDS (e.g. Basin or Pond)\*
  - Calculation Area
  - Sample Receptor

Location Name**	
Do Minimum Baseline Year	Do Minimum Future Year
Do Minimum Baseline Year	Do Something Baseline Year
Do Minimum Baseline Year	Do Something Future Year
Significance of Impact (DMB vs DMF)	
Significance of Impact (DMB vs DSB)	
Significance of Impact (DMB vs DSF)	

DMB = Do Minimum Baseline Year  
 DMF = Do Minimum Future Year  
 DSB = Do Something Baseline Year  
 DSF = Do Something Future Year

\* Actual shape of pond/basin will be subject to detailed design  
 \*\* Predicted noise levels at the least beneficial façade for each scenario comparison

0	NOV 2016	ES Preparation	KA	KF	BMCK	EHO
Rev.	Rev. Date	Purpose of revision	Orig/Dwnl	Checkd	Rev'd	Apprv'd

**JACOBS**  
 36 Belford Street, Glasgow, G2 7HF, UK  
 Tel: +44(0)141 243 8000 Fax: +44(0)141 226 3109  
 www.jacobs.com

Client  
  
 TRANSPORT SCOTLAND  
 COMHDAI ALBA

Project  
  
**A96**  
 DUALLING  
 INVERNESS TO NAIRN  
 (Incl. Nairn Bypass)

Drawing title  
**Figure 8.14f**  
**Environmental Statement**  
**Sample Receptor Predicted Daytime Noise Levels**  
**(Ground Floor)**

Sheet 6 of 12		
Drawing Status	FINAL	
Scale	1:10,000 @ A3	DO NOT SCALE
Jacobs No.	B2103500	
BIM No.		
Drawing number	B2103500/EN/EIA/DR/814f	Rev 0

This drawing is not to be used in whole or part other than for the intended purpose and project as defined on this drawing. Refer to the contract for full terms and conditions.