

- Legend**
- Proposed Scheme (as per Draft Orders)
  - SUDS Detention Basin/Pond \*\* (Green = Basin / Blue = Detention Pond)
  - Existing Vegetation / Approximate area of Existing Vegetation to be Retained (M) Managed area
  - Existing Contours (5m Intervals)
  - Cross Section Locations \*
- Landscape and Ecological Mitigation Proposals**
- Landscape Planting Proposals
  - Ecological Planting Proposals
  - Ecological and Landscape Planting Proposals
  - Coniferous Woodland
  - Deciduous Woodland
  - Mixed Woodland
  - Riparian Woodland
  - Scrub Woodland
  - Feathered Tree Planting
  - Heavy Standard Deciduous Trees
  - Hedgerow
  - Hedgerow with Trees
  - Species Rich Grassland
  - Wet Grassland Mix
  - Verge Grass
  - Landscape Earthworks
  - Bat Box Provision with number
  - Proposed Noise Mitigation
  - Dry Mammal Underpass
  - Culvert / Bridge with provision for mammal crossing (see individual labels)
  - Mammal Fencing
  - Hibernacula Locations

\* See Figure 9.6 for Cross Sections  
 \*\* Actual shape of pond/basin will be subject to detailed design

Rev	Rev. Date	ES Publication	SHF	IL	KS	EHG
0	NOV 2016	ES Publication	SHF	IL	KS	EHG
Rev	Rev. Date	Purpose of revision	Drawn	Checked	Rev'd	Apprv'd

**JACOBS**  
 95 Bothwell St, Glasgow, G2 7HX  
 Tel: +44(0)141 243 8300 Fax: +44(0)141 226 3109  
 www.jacobs.com

Client: **TRANSPORT SCOTLAND**  
 COMHDAIL ALBA

Project: **A96 DUALLING**  
 INVERNESS TO NAIRN  
 (incl. Nairn Bypass)

Drawing title: **Figure 9.5a Environmental Statement Landscape and Ecological Mitigation** Sheet 1 of 21

Drawing status: **FINAL**

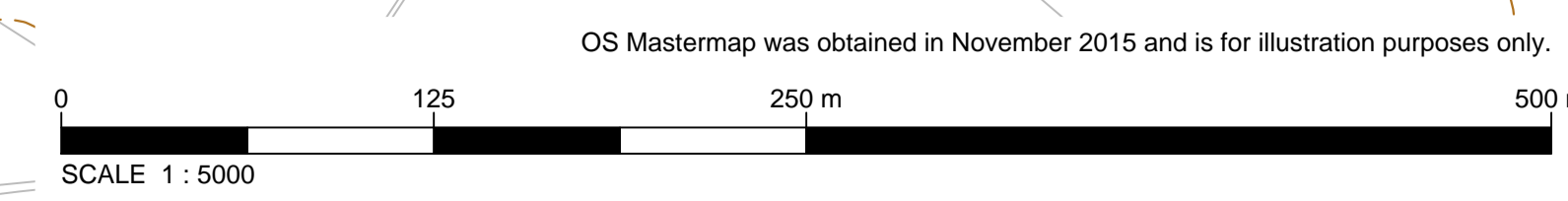
Scale: 1:5000 @ A3 **DO NOT SCALE**

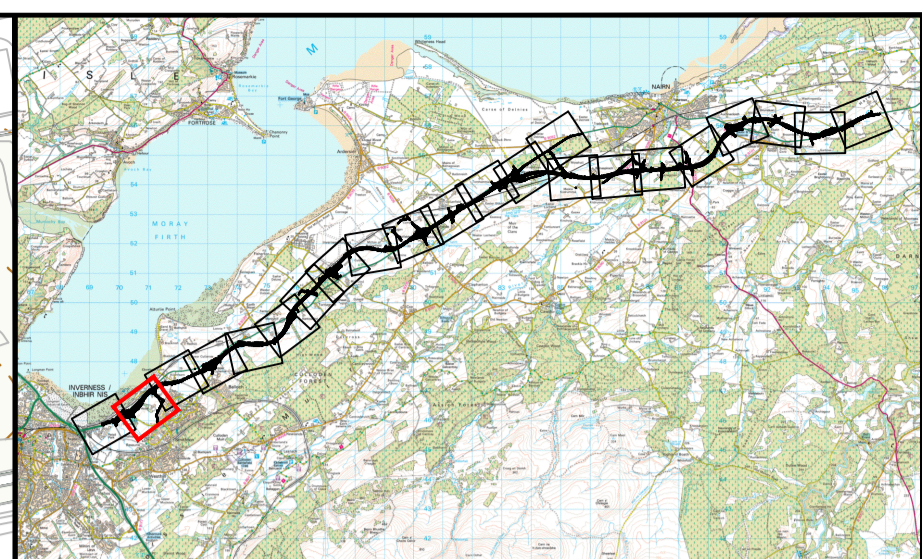
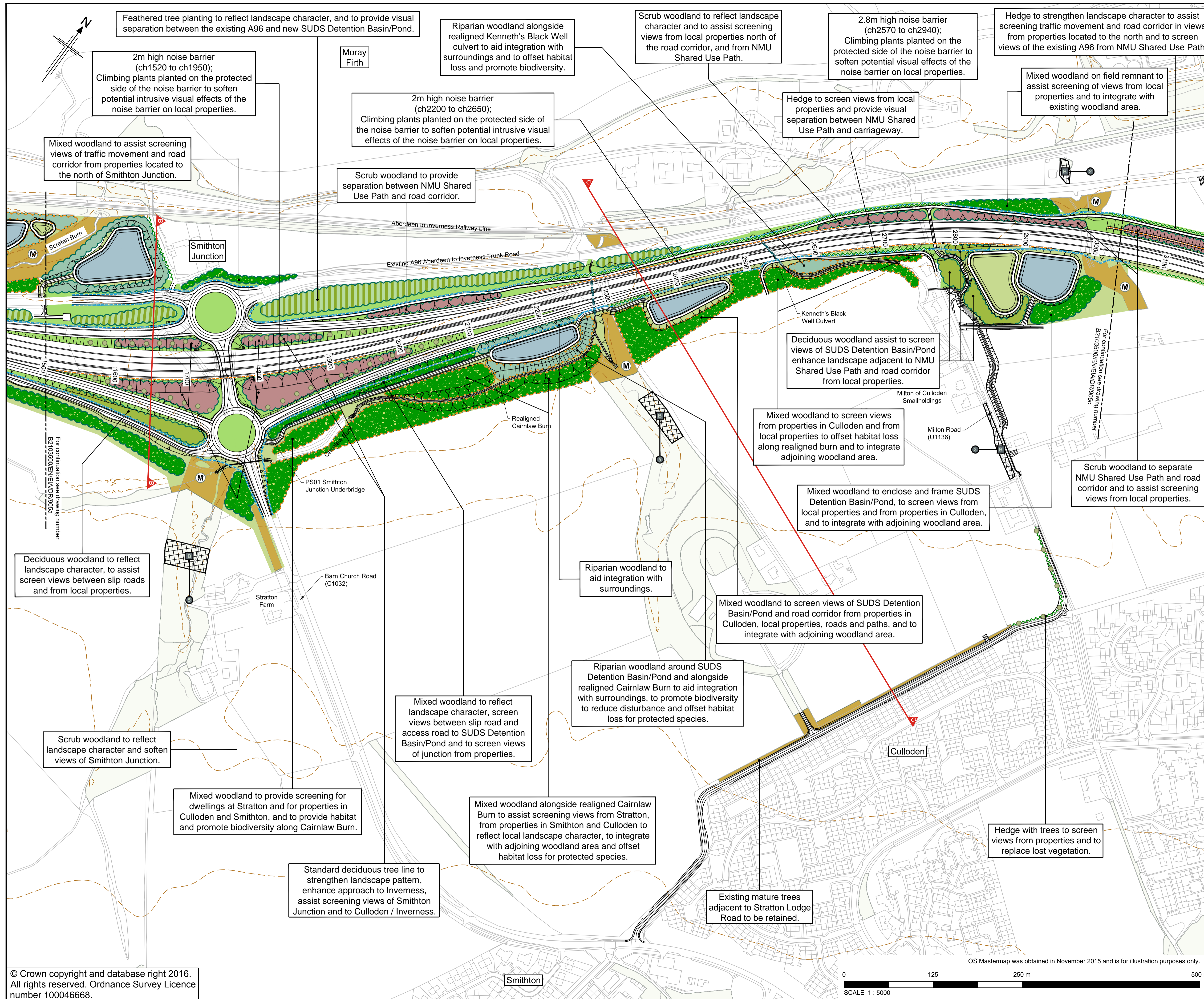
Jacobs No. B2103500

BIM no.

Drawing number: **B2103500/EN/EIA/DR/905a** Rev **0**

This drawing is not to be used in whole or part other than for the intended purpose and project as defined on this drawing. Refer to the contract for full terms and conditions.





**Legend**

- Proposed Scheme (as per Draft Orders)
- SUDS Detention Basin/Pond \*\* (Green = Basin / Blue = Detention Pond)
- Existing Vegetation / Approximate area of Existing Vegetation to be Retained (M) Managed area
- Existing Contours (5m Intervals)
- Cross Section Locations \*

**Landscape and Ecological Mitigation Proposals**

- Landscape Planting Proposals
- Ecological Planting Proposals
- Ecological and Landscape Planting Proposals
- Coniferous Woodland
- Deciduous Woodland
- Mixed Woodland
- Riparian Woodland
- Scrub Woodland
- Feathered Tree Planting
- Heavy Standard Deciduous Trees
- Hedgerow
- Hedgerow with Trees
- Species Rich Grassland
- Wet Grassland Mix
- Verge Grass
- Landscape Earthworks
- Bat Box Provision with number
- Proposed Noise Mitigation
- Dry Mammal Underpass
- Culvert / Bridge with provision for mammal crossing (see individual labels)
- Mammal Fencing
- Hibernacula Locations

\* See Figure 9.6 for Cross Sections  
 \*\* Actual shape of pond/basin will be subject to detailed design

Rev	Rev. Date	Purpose of revision	SHF	IL	KS	EHG
0	NOV 2016	ES Publication				

**JACOBS**  
 95 Bothwell St, Glasgow, G2 7HX  
 Tel: +44(0)141 243 8300 Fax: +44(0)141 226 3109  
 www.jacobs.com

Client  
  
 TRANSPORT SCOTLAND  
 COMHAIL ALBA

Project  
  
 A96 DUALLING  
 INVERNESS TO NAIRN  
 (incl. Nairn Bypass)

Drawing title  
**Figure 9.5b**  
 Environmental Statement  
 Landscape and Ecological  
 Mitigation  
 Sheet 2 of 21

Drawing status: FINAL

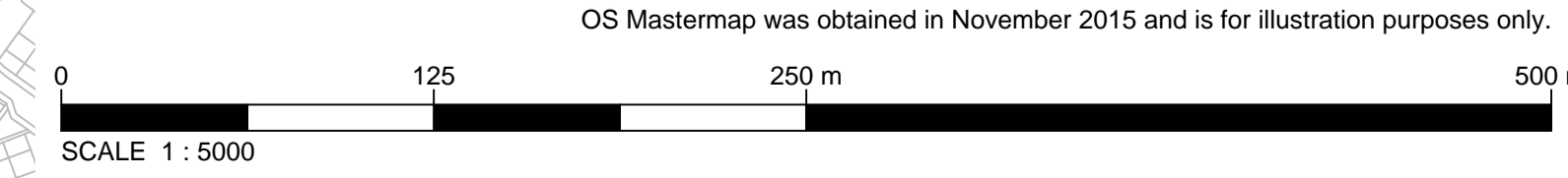
Scale: 1:5000 @ A3 DO NOT SCALE

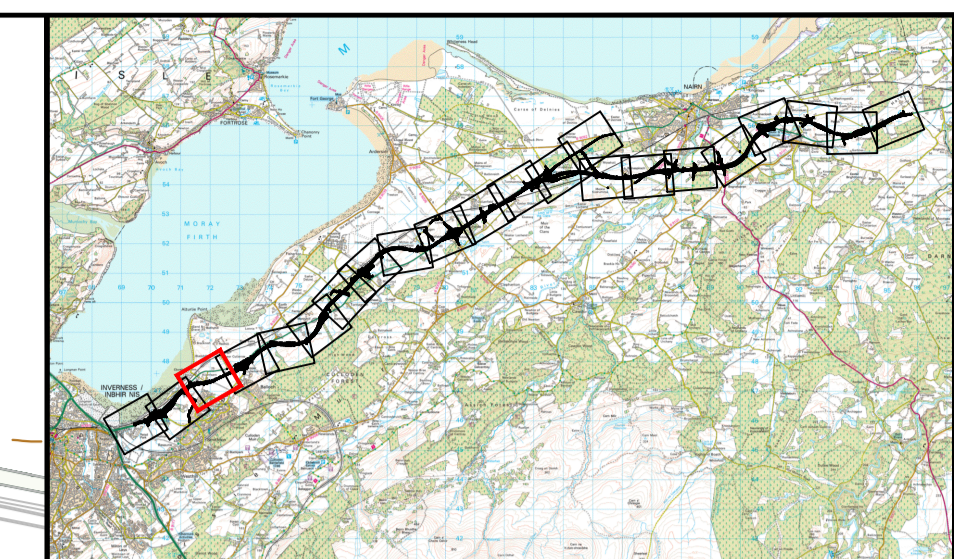
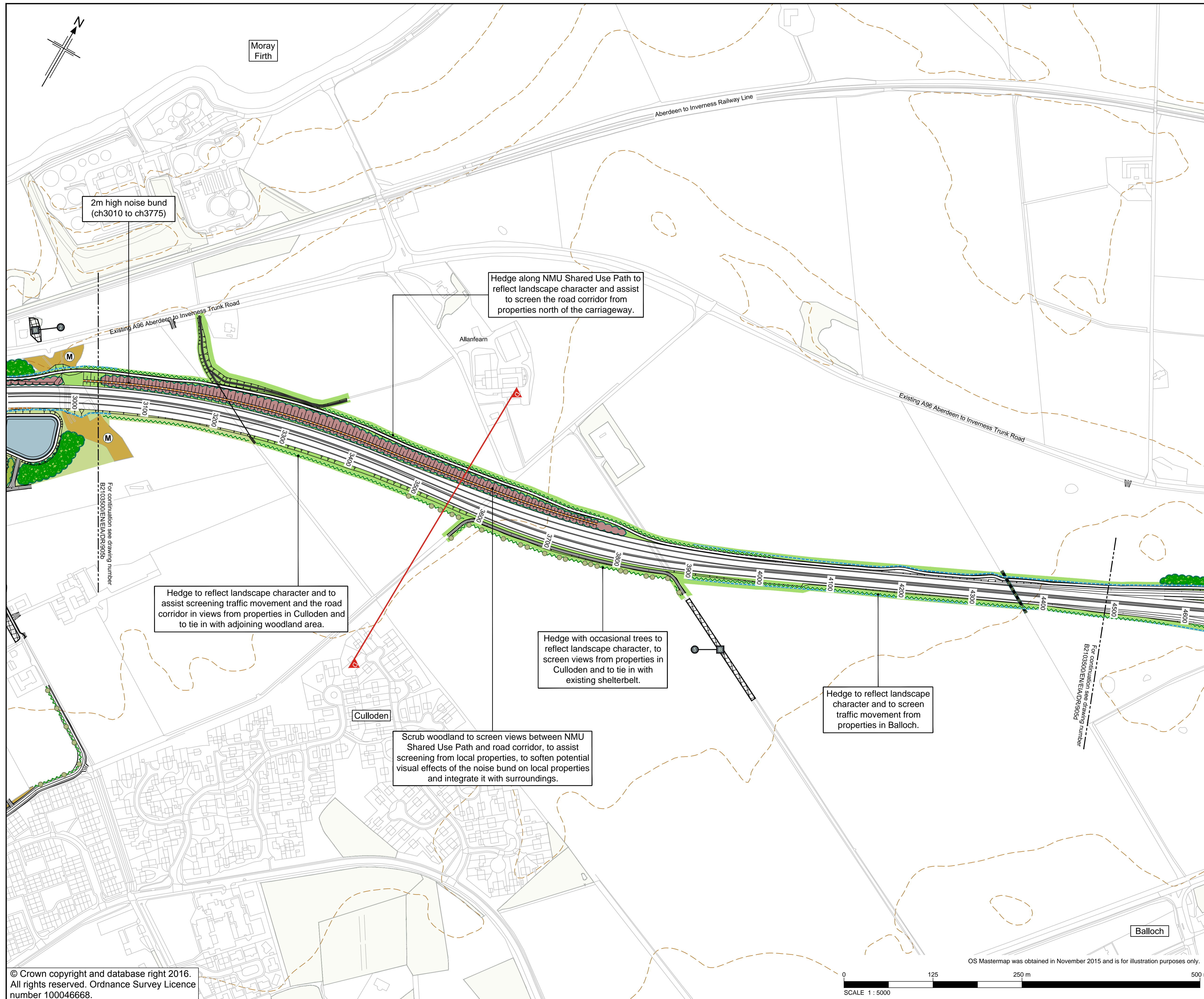
Jacobs No. B2103500

BIM no.

Drawing number: B2103500/EN/EIA/DR/905b Rev 0

This drawing is not to be used in whole or part other than for the intended purpose and project as defined on this drawing. Refer to the contract for full terms and conditions.





**Legend**

- Proposed Scheme (as per Draft Orders)
- SUDS Detention Basin/Pond \*\* (Green = Basin / Blue = Detention Pond)
- Existing Vegetation / Approximate area of Existing Vegetation to be Retained
- Managed area (M)
- Existing Contours (5m Intervals)
- Cross Section Locations \*

**Landscape and Ecological Mitigation Proposals**

- Landscape Planting Proposals
- Ecological Planting Proposals
- Ecological and Landscape Planting Proposals
- Coniferous Woodland
- Deciduous Woodland
- Mixed Woodland
- Riparian Woodland
- Scrub Woodland
- Feathered Tree Planting
- Heavy Standard Deciduous Trees
- Hedgerow
- Hedgerow with Trees
- Species Rich Grassland
- Wet Grassland Mix
- Verge Grass
- Landscape Earthworks
- Bat Box Provision with number (B)
- Proposed Noise Mitigation
- Dry Mammal Underpass
- Culvert / Bridge with provision for mammal crossing (see individual labels)
- Mammal Fencing
- Hibernacula Locations

\* See Figure 9.6 for Cross Sections  
 \*\* Actual shape of pond/basin will be subject to detailed design

Rev	Rev. Date	Purpose of revision	SHF	IL	KS	EHG	Apprv'd
0	NOV 2016	ES Publication					

**JACOBS**  
 95 Bothwell St, Glasgow, G2 7HX  
 Tel: +44(0)141 243 8300 Fax: +44(0)141 226 3109  
 www.jacobs.com

Client  
  
 TRANSPORT SCOTLAND  
 COMHAIL ALBA

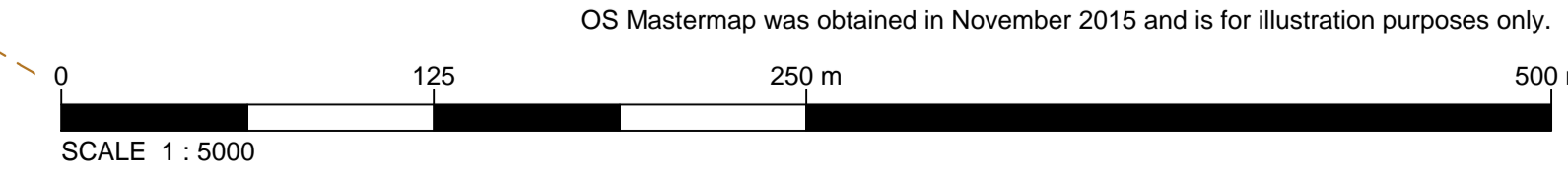
Project  
  
**A96**  
 DUALLING  
 INVERNESS TO NAIRN  
 (incl. Nairn Bypass)

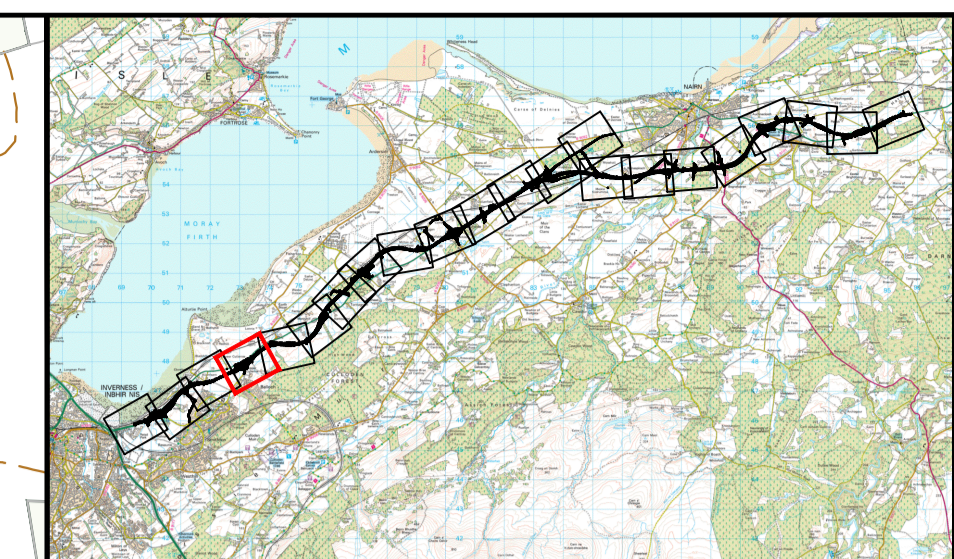
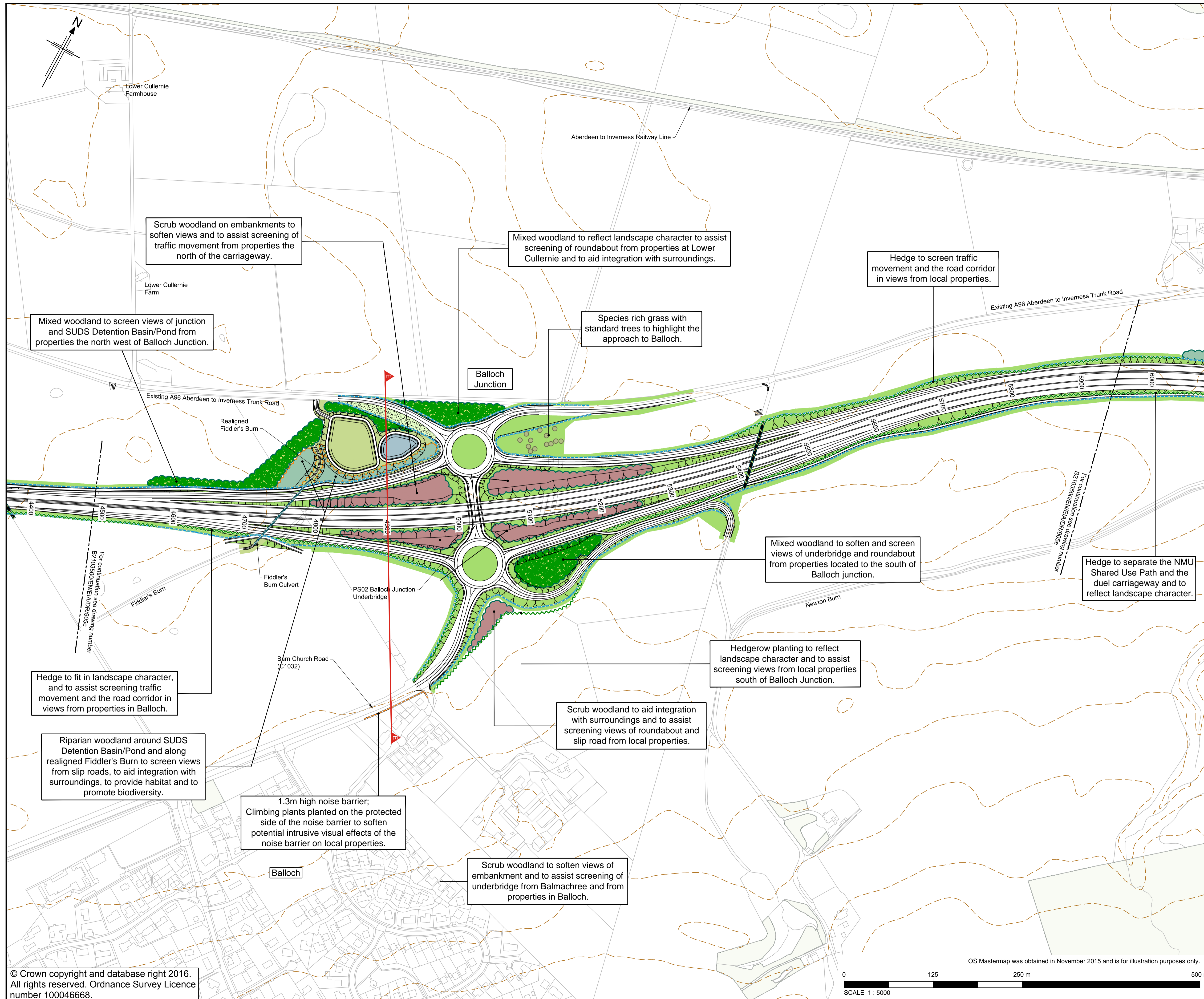
Drawing title  
**Figure 9.5c**  
 Environmental Statement  
 Landscape and Ecological  
 Mitigation  
 Sheet 3 of 21

Drawing status	FINAL	DO NOT SCALE
Scale	1:5000 @ A3	
Jacobs No.	B2103500	
BIM no.		
Drawing number	B2103500/EN/EIA/DR/905c	Rev 0

This drawing is not to be used in whole or part other than for the intended purpose and project as defined on this drawing. Refer to the contract for full terms and conditions.

© Crown copyright and database right 2016.  
 All rights reserved. Ordnance Survey Licence number 100046668.





**Legend**

- Proposed Scheme (as per Draft Orders)
- SUDS Detention Basin/Pond \*\* (Green = Basin / Blue = Detention Pond)
- Existing Vegetation / Approximate area of Existing Vegetation to be Retained
- Managed area
- Existing Contours (5m Intervals)
- Cross Section Locations \*

**Landscape and Ecological Mitigation Proposals**

- Landscape Planting Proposals
- Ecological Planting Proposals
- Ecological and Landscape Planting Proposals
- Coniferous Woodland
- Deciduous Woodland
- Mixed Woodland
- Riparian Woodland
- Scrub Woodland
- Feathered Tree Planting
- Heavy Standard Deciduous Trees
- Hedgerow
- Hedgerow with Trees
- Species Rich Grassland
- Wet Grassland Mix
- Verge Grass
- Landscape Earthworks
- Bat Box Provision with number
- Proposed Noise Mitigation
- Dry Mammal Underpass
- Culvert / Bridge with provision for mammal crossing (see individual labels)
- Mammal Fencing
- Hibernacula Locations

\* See Figure 9.6 for Cross Sections  
 \*\* Actual shape of pond/basin will be subject to detailed design

Rev	Rev. Date	Purpose of revision	Drawn	Checked	Rev'd	Apprv'd
0	NOV 2016	ES Publication	SHF	IL	KS	EHG

**JACOBS**  
 85 Bothwell St, Glasgow, G2 7HX  
 Tel: +44(0)141 243 8300 Fax: +44(0)141 226 3109  
 www.jacobs.com

Client

**TRANSPORT SCOTLAND**  
 COMHIDHAILE ALBA

Project

**A96 DUALLING**  
 INVERNESS TO NAIRN  
 (incl. Nairn Bypass)

Drawing title

**Figure 9.5d**  
 Environmental Statement  
 Landscape and Ecological Mitigation

Sheet 4 of 21

Drawing status: **FINAL**

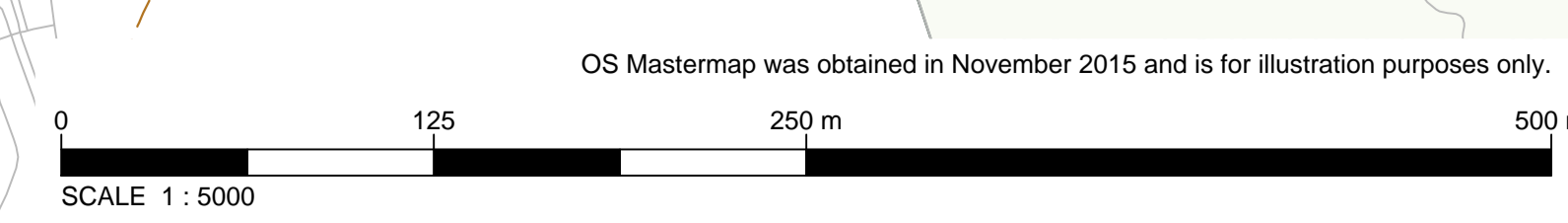
Scale: 1:5000 @ A3 DO NOT SCALE

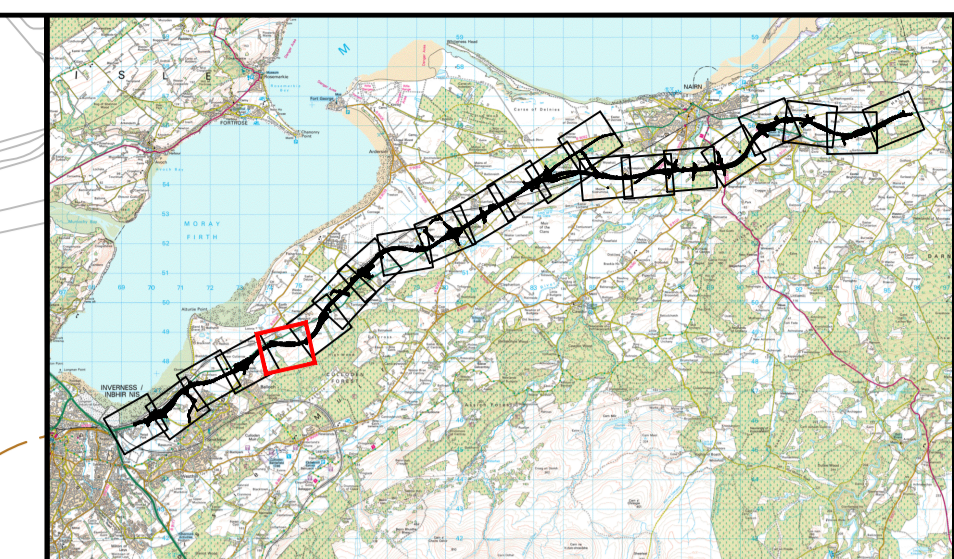
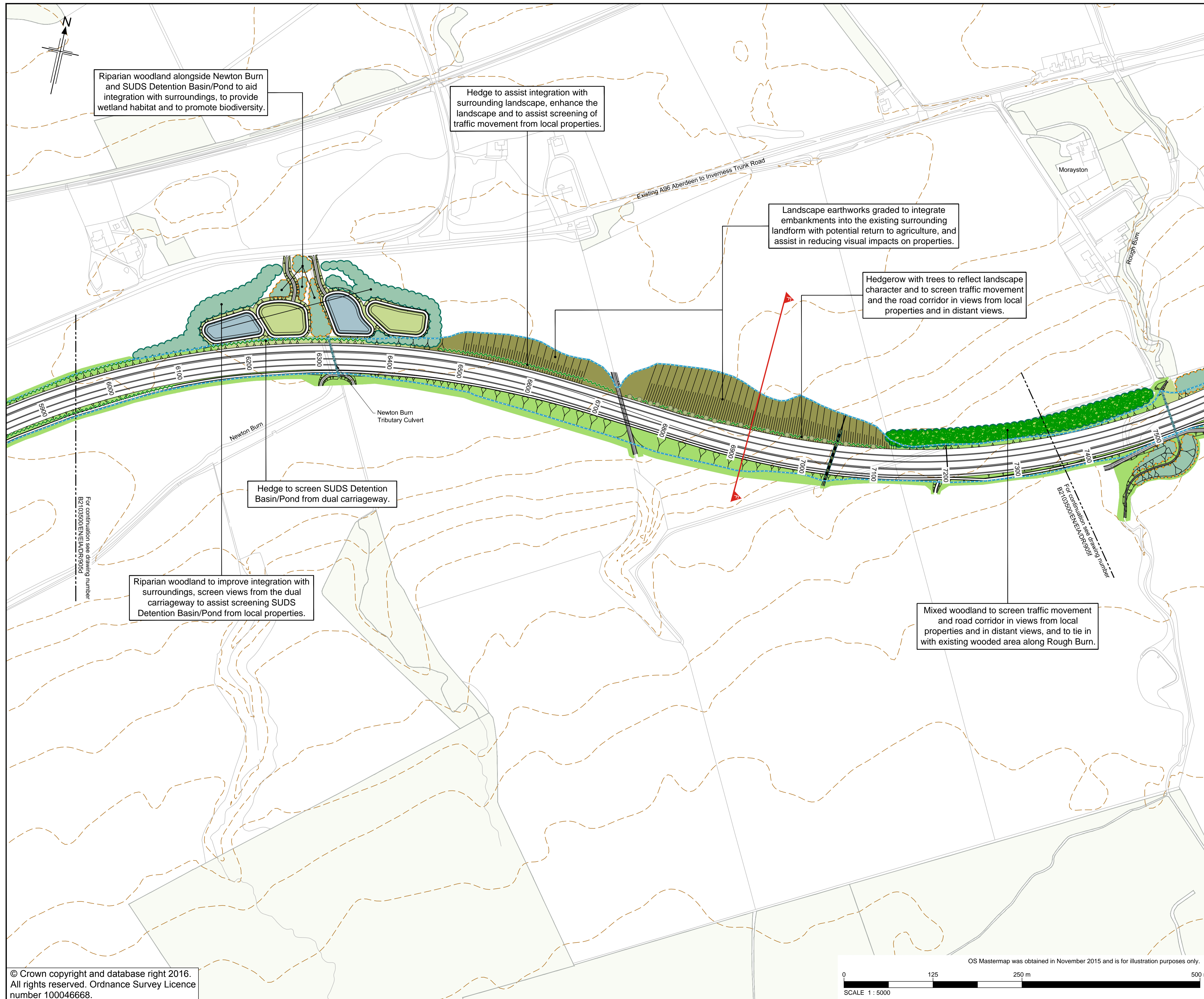
Jacobs No. B2103500

BIM no.

Drawing number: **B2103500/EN/EIA/DR/905d** Rev 0

This drawing is not to be used in whole or part other than for the intended purpose and project as defined on this drawing. Refer to the contract for full terms and conditions.





**Legend**

- Proposed Scheme (as per Draft Orders)
- SUDS Detention Basin/Pond \*\* (Green = Basin / Blue = Detention Pond)
- Existing Vegetation / Approximate area of Existing Vegetation to be Retained (M) Managed area
- Existing Contours (5m Intervals)
- Cross Section Locations \*

**Landscape and Ecological Mitigation Proposals**

- Landscape Planting Proposals
- Ecological Planting Proposals
- Ecological and Landscape Planting Proposals
- Coniferous Woodland
- Deciduous Woodland
- Mixed Woodland
- Riparian Woodland
- Scrub Woodland
- Feathered Tree Planting
- Heavy Standard Deciduous Trees
- Hedgerow
- Hedgerow with Trees
- Species Rich Grassland
- Wet Grassland Mix
- Verge Grass
- Landscape Earthworks
- Bat Box Provision with number
- Proposed Noise Mitigation
- Dry Mammal Underpass
- Culvert / Bridge with provision for mammal crossing (see individual labels)
- Mammal Fencing
- Hibernacula Locations

\* See Figure 9.6 for Cross Sections  
 \*\* Actual shape of pond/basin will be subject to detailed design

Rev	Rev. Date	Purpose of revision	Drawn	Checkd	Rev'd	Apprv'd
0	NOV 2016	ES Publication	SHF	IL	KS	EHG

**JACOBS**  
 95 Bothwell St, Glasgow, G2 7HX  
 Tel: +44(0)141 243 8300 Fax: +44(0)141 226 3109  
 www.jacobs.com

Client

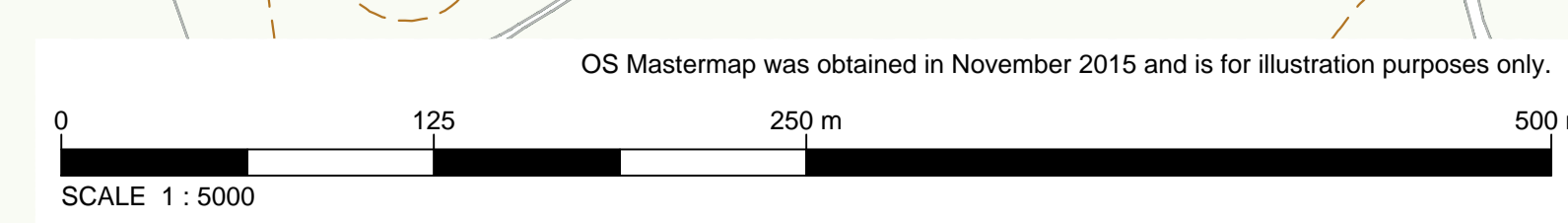
Project  
  
 INVERNESS TO NAIRN  
 (incl. Nairn Bypass)

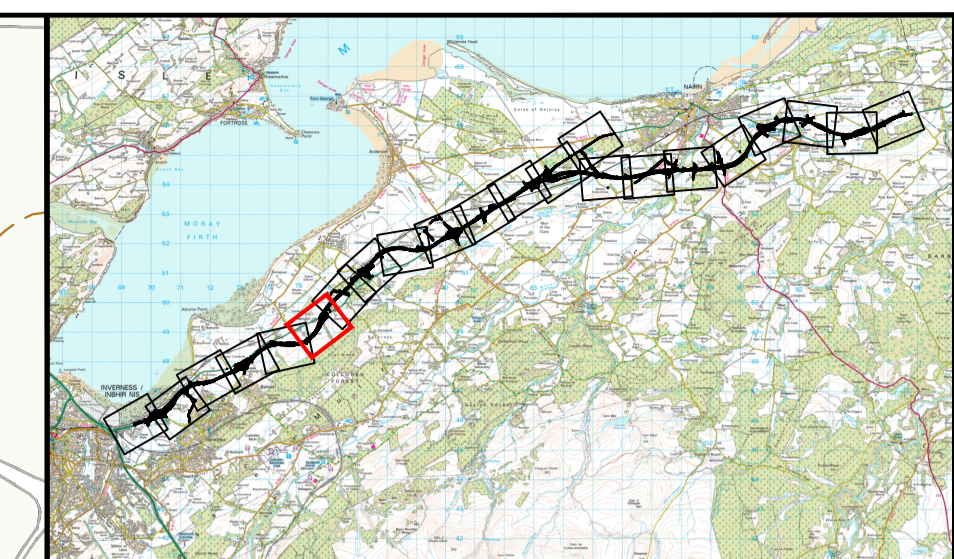
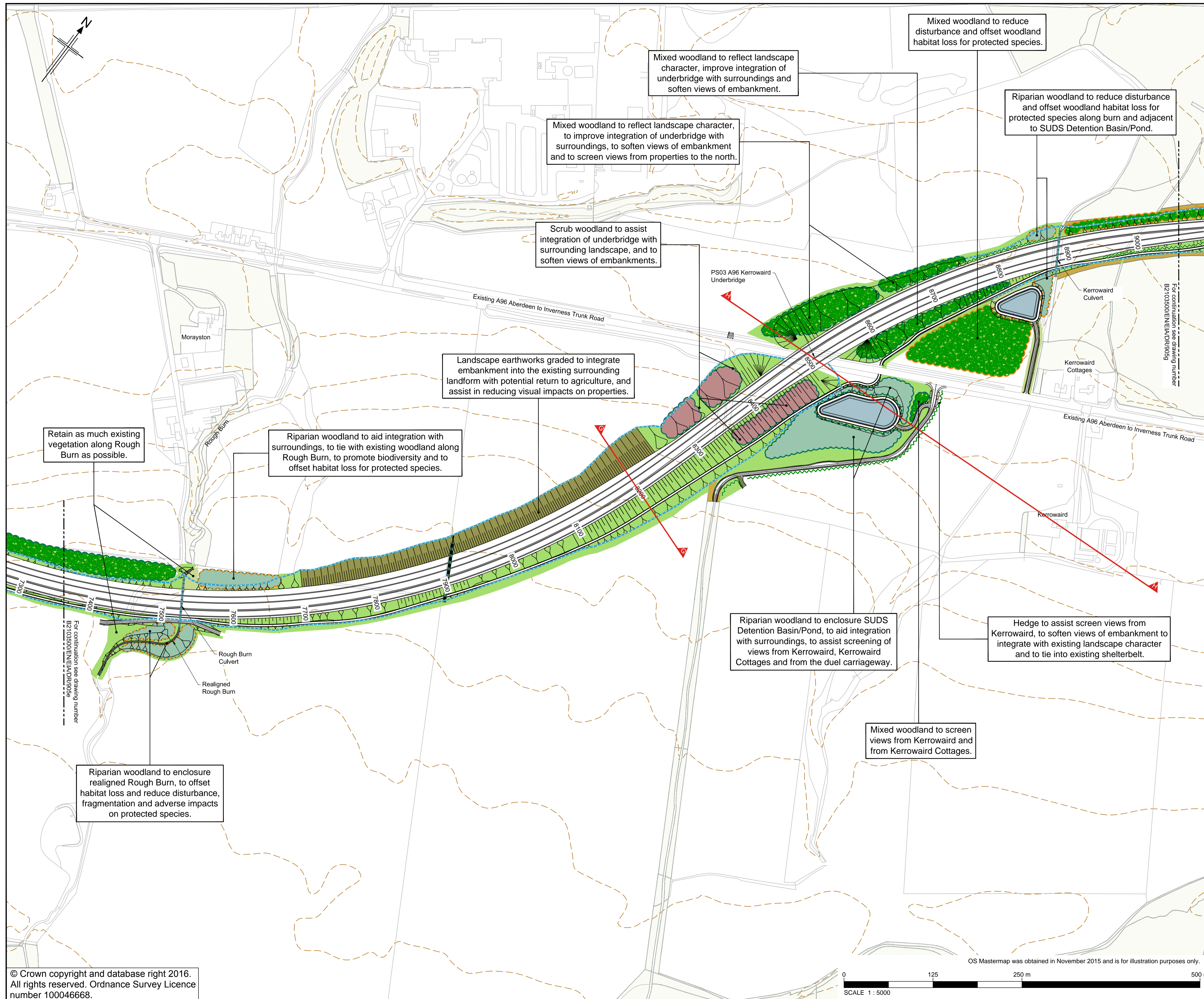
Drawing title  
**Figure 9.5e**  
 Environmental Statement  
 Landscape and Ecological  
 Mitigation  
 Sheet 5 of 21

Drawing status	FINAL
Scale	1:5000 @ A3 DO NOT SCALE
Jacobs No.	B2103500
BIM no.	
Drawing number	B2103500/EN/EIA/DR/905e
Rev	0

This drawing is not to be used in whole or part other than for the intended purpose and project as defined on this drawing. Refer to the contract for full terms and conditions.

© Crown copyright and database right 2016.  
 All rights reserved. Ordnance Survey Licence number 100046668.





**Legend**

- Proposed Scheme (as per Draft Orders)
- SUDS Detention Basin/Pond \*\* (Green = Basin / Blue = Detention Pond)
- Existing Vegetation / Approximate area of Existing Vegetation to be Retained (M) Managed area
- Existing Contours (5m Intervals)
- Cross Section Locations \*

**Landscape and Ecological Mitigation Proposals**

- Landscape Planting Proposals
- Ecological Planting Proposals
- Ecological and Landscape Planting Proposals
- Coniferous Woodland
- Deciduous Woodland
- Mixed Woodland
- Riparian Woodland
- Scrub Woodland
- Feathered Tree Planting
- Heavy Standard Deciduous Trees
- Hedgerow
- Hedgerow with Trees
- Species Rich Grassland
- Wet Grassland Mix
- Verge Grass
- Landscape Earthworks
- Bat Box Provision with number
- Proposed Noise Mitigation
- Dry Mammal Underpass
- Culvert / Bridge with provision for mammal crossing (see individual labels)
- Mammal Fencing
- Hibernacula Locations

\* See Figure 9.6 for Cross Sections  
 \*\* Actual shape of pond/basin will be subject to detailed design

Rev	Rev. Date	Purpose of revision	Drawn	Checkd	Rev'd	Apprv'd
0	NOV 2016	ES Publication	SHF	IL	KS	EHG

**JACOBS**  
 95 Bothwell St, Glasgow, G2 7HX  
 Tel: +44(0)141 243 8300 Fax: +44(0)141 226 3109  
 www.jacobs.com



Drawing title: **Figure 9.5f Environmental Statement Landscape and Ecological Mitigation** Sheet 6 of 21

Drawing status: **FINAL**

Scale: 1:5000 @ A3 DO NOT SCALE

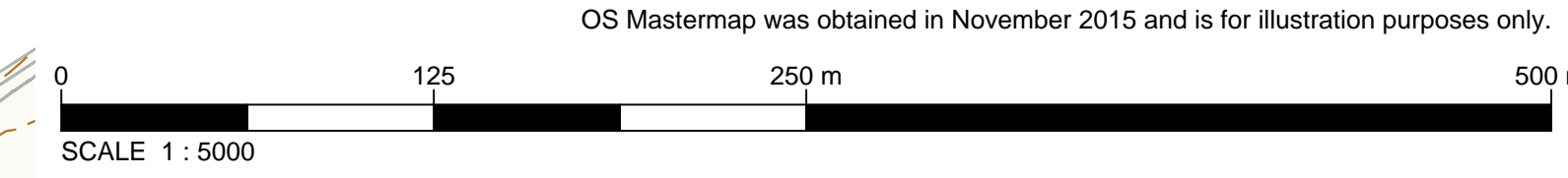
Jacobs No. B2103500

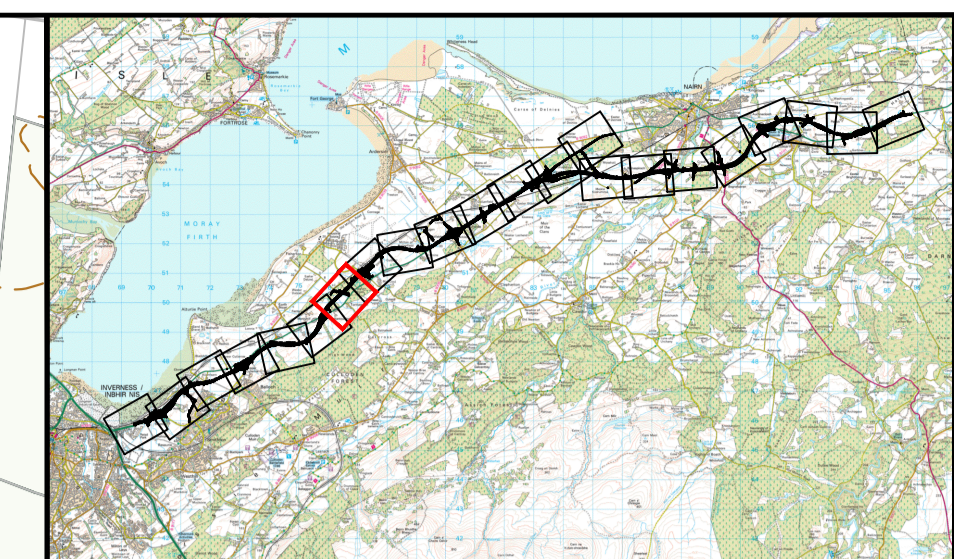
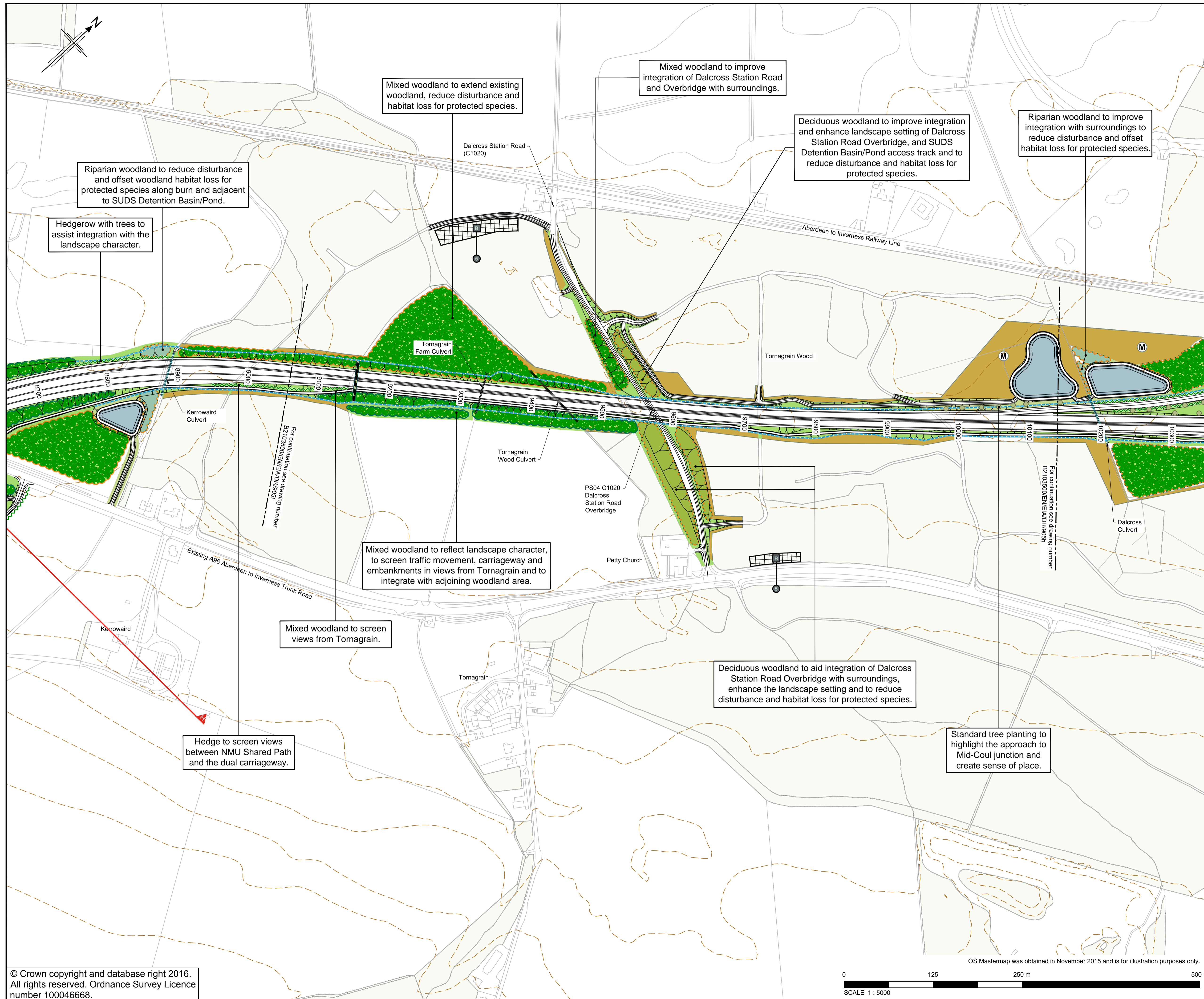
BIM no.

Drawing number: **B2103500/EN/EIA/DR/905f** Rev 0

This drawing is not to be used in whole or part other than for the intended purpose and project as defined on this drawing. Refer to the contract for full terms and conditions.

© Crown copyright and database right 2016. All rights reserved. Ordnance Survey Licence number 100046668.





**Legend**

- Proposed Scheme (as per Draft Orders)
- SUDS Detention Basin/Pond \*\* (Green = Basin / Blue = Detention Pond)
- Existing Vegetation / Approximate area of Existing Vegetation to be Retained (M) Managed area
- Existing Contours (5m Intervals)
- Cross Section Locations \*

**Landscape and Ecological Mitigation Proposals**

- Landscape Planting Proposals
- Ecological Planting Proposals
- Ecological and Landscape Planting Proposals
- Coniferous Woodland
- Deciduous Woodland
- Mixed Woodland
- Riparian Woodland
- Scrub Woodland
- Feathered Tree Planting
- Heavy Standard Deciduous Trees
- Hedgerow
- Hedgerow with Trees
- Species Rich Grassland
- Wet Grassland Mix
- Verge Grass
- Landscape Earthworks
- Bat Box Provision with number
- Proposed Noise Mitigation
- Dry Mammal Underpass
- Culvert / Bridge with provision for mammal crossing (see individual labels)
- Mammal Fencing
- Hibernacula Locations

\* See Figure 9.6 for Cross Sections  
 \*\* Actual shape of pond/basin will be subject to detailed design

Rev	Rev. Date	Purpose of revision	SHF	IL	KS	EHG	Apprv'd
0	NOV 2016	ES Publication					

**JACOBS**  
 95 Bothwell St, Glasgow, G2 7HX  
 Tel: +44(0)141 243 8300 Fax: +44(0)141 226 3109  
 www.jacobs.com

Client  
  
 TRANSPORT SCOTLAND  
 COMHIDHAIL ALBA

Project  
  
**A96 DUALLING**  
 INVERNESS TO NAIRN  
 (incl. Nairn Bypass)

Drawing title  
**Figure 9.5g**  
 Environmental Statement  
 Landscape and Ecological  
 Mitigation  
 Sheet 7 of 21

Drawing status: **FINAL**

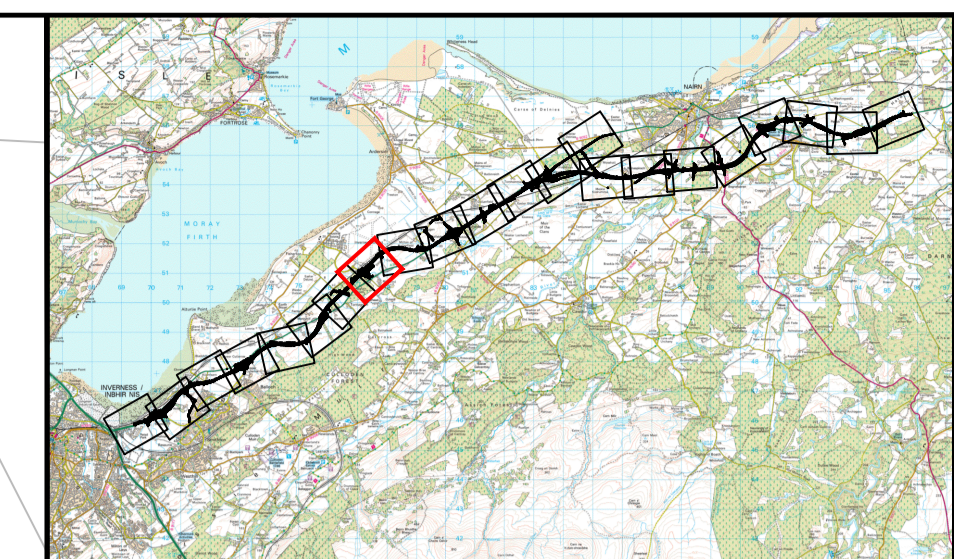
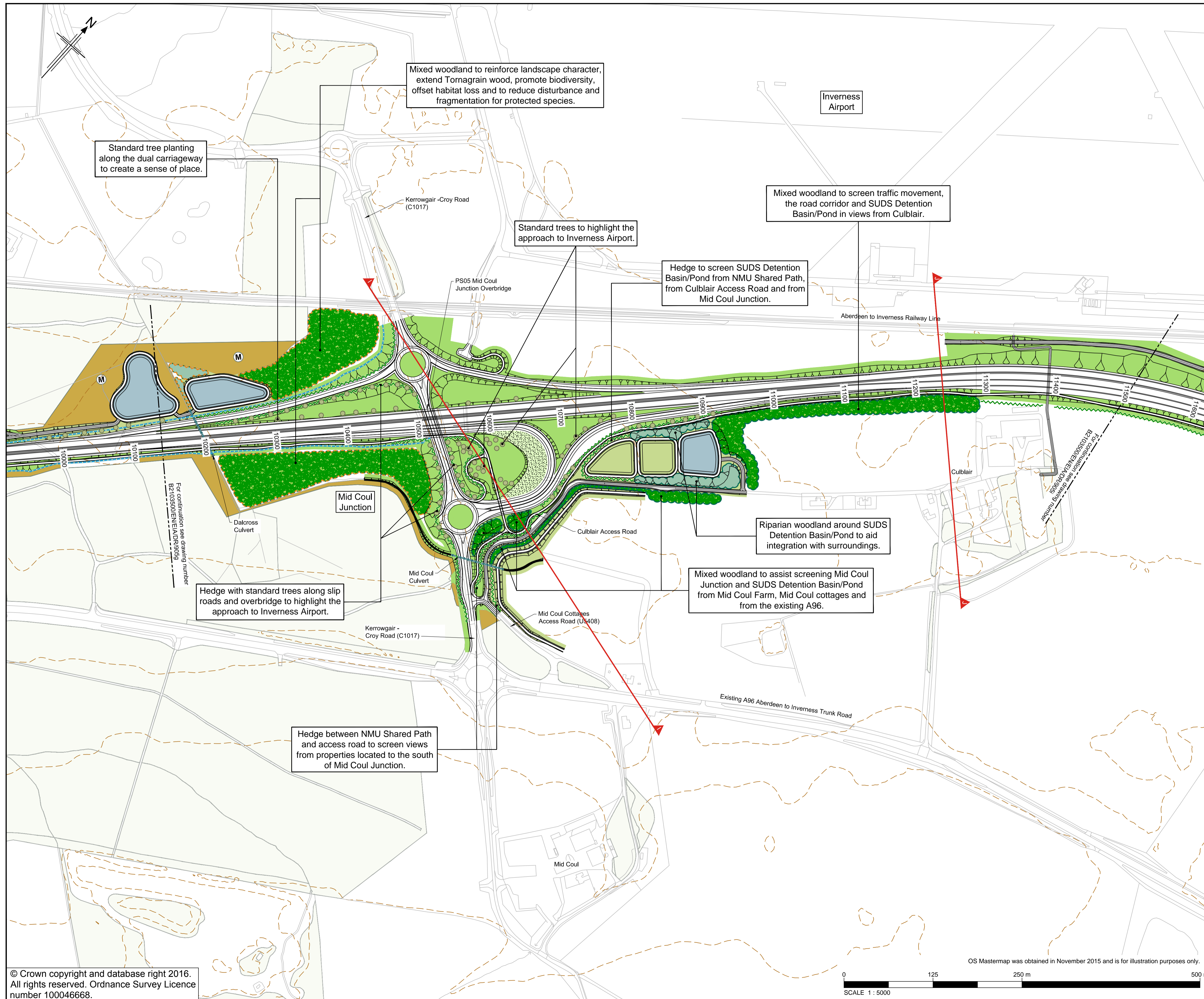
Scale: 1:5000 @ A3 **DO NOT SCALE**

Jacobs No. B2103500

BIM no.

Drawing number: **B2103500/EN/EIA/DR/905g** Rev **0**

This drawing is not to be used in whole or part other than for the intended purpose and project as defined on this drawing. Refer to the contract for full terms and conditions.



**Legend**

- Proposed Scheme (as per Draft Orders)
- SUDS Detention Basin/Pond \*\* (Green = Basin / Blue = Detention Pond)
- Existing Vegetation / Approximate area of Existing Vegetation to be Retained (M) Managed area
- Existing Contours (5m Intervals)
- Cross Section Locations \*

**Landscape and Ecological Mitigation Proposals**

- Landscape Planting Proposals
- Ecological Planting Proposals
- Ecological and Landscape Planting Proposals
- Coniferous Woodland
- Deciduous Woodland
- Mixed Woodland
- Riparian Woodland
- Scrub Woodland
- Feathered Tree Planting
- Heavy Standard Deciduous Trees
- Hedgerow
- Hedgerow with Trees
- Species Rich Grassland
- Wet Grassland Mix
- Verge Grass
- Landscape Earthworks
- Bat Box Provision with number
- Proposed Noise Mitigation
- Dry Mammal Underpass
- Culvert / Bridge with provision for mammal crossing (see individual labels)
- Mammal Fencing
- Hibernacula Locations

\* See Figure 9.6 for Cross Sections  
 \*\* Actual shape of pond/basin will be subject to detailed design

Rev	Rev. Date	Purpose of revision	SHF	IL	KS	EHG	Apprv
0	NOV 2016	ES Publication					

**JACOBS**  
 95 Bothwell St, Glasgow, G2 7HX  
 Tel: +44(0)141 243 8300 Fax: +44(0)141 226 3109  
 www.jacobs.com

Client  
  
 TRANSPORT SCOTLAND  
 COMHAIL ALBA

Project  
  
**A96**  
 DUALLING  
 INVERNESS TO NAIRN  
 (incl. Nairn Bypass)

Drawing title  
**Figure 9.5h**  
 Environmental Statement  
 Landscape and Ecological  
 Mitigation  
 Sheet 8 of 21

Drawing status: **FINAL**

Scale: 1:5000 @ A3 **DO NOT SCALE**

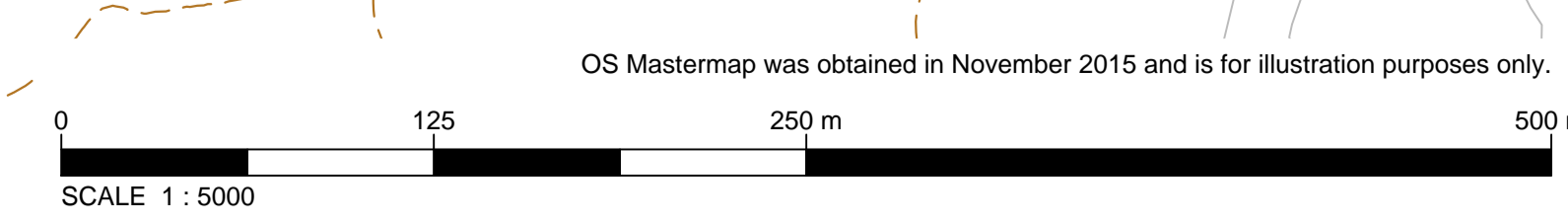
Jacobs No. B2103500

BIM no.

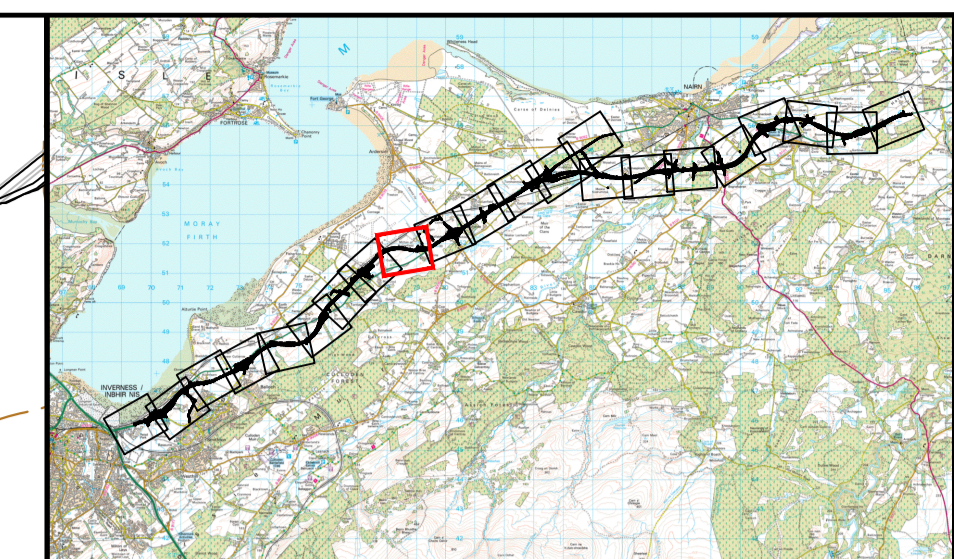
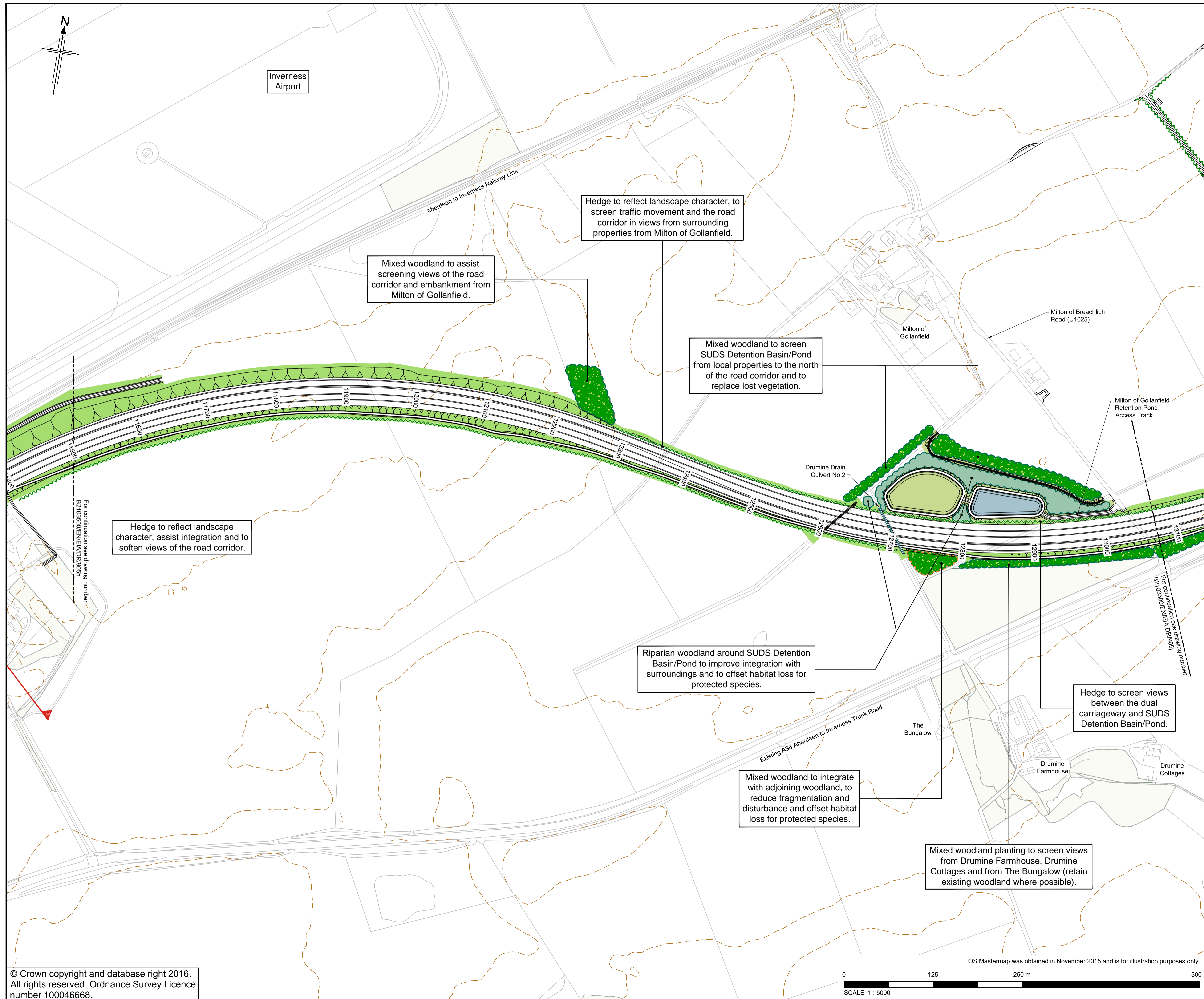
Drawing number: **B2103500/EN/EIA/DR/905h** Rev **0**

This drawing is not to be used in whole or part other than for the intended purpose and project as defined on this drawing. Refer to the contract for full terms and conditions.

© Crown copyright and database right 2016.  
 All rights reserved. Ordnance Survey Licence number 100046668.







- Legend**
- Proposed Scheme (as per Draft Orders)
  - SUDS Detention Basin/Pond \*\* (Green = Basin / Blue = Detention Pond)
  - Existing Vegetation / Approximate area of Existing Vegetation to be Retained
  - Managed area
  - Existing Contours (5m Intervals)
  - Cross Section Locations \*
- Landscape and Ecological Mitigation Proposals**
- Landscape Planting Proposals
  - Ecological Planting Proposals
  - Ecological and Landscape Planting Proposals
  - Coniferous Woodland
  - Deciduous Woodland
  - Mixed Woodland
  - Riparian Woodland
  - Scrub Woodland
  - Feathered Tree Planting
  - Heavy Standard Deciduous Trees
  - Hedgerow
  - Hedgerow with Trees
  - Species Rich Grassland
  - Wet Grassland Mix
  - Verge Grass
  - Landscape Earthworks
  - Bat Box Provision with number
  - Proposed Noise Mitigation
  - Dry Mammal Underpass
  - Culvert / Bridge with provision for mammal crossing (see individual labels)
  - Mammal Fencing
  - Hibernacula Locations

\* See Figure 9.6 for Cross Sections  
 \*\* Actual shape of pond/basin will be subject to detailed design

Rev	Rev. Date	Purpose of revision	Drawn	Checkd	Rev'd	Apprv'd
0	NOV 2016	ES Publication	SHF	IL	KS	EHG

**JACOBS**  
 95 Bothwell St, Glasgow, G2 7HX  
 Tel: +44(0)141 243 8300 Fax: +44(0)141 226 3109  
 www.jacobs.com

Client  
  
 TRANSPORT SCOTLAND  
 COMHIDHAIL ALBA

Project  
  
 A96 DUALLING  
 INVERNESS TO NAIRN  
 (incl. Nairn Bypass)

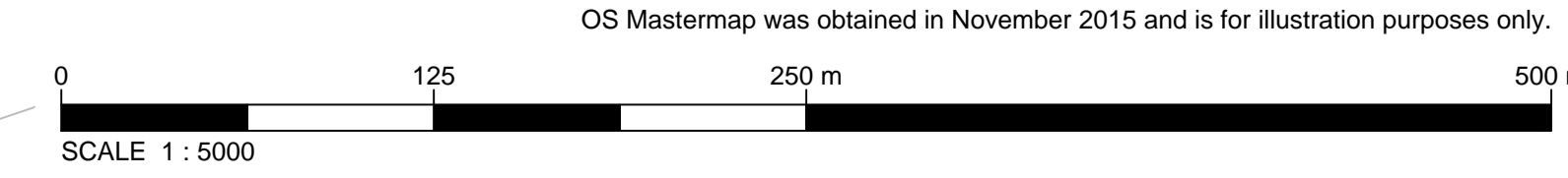
Drawing title  
**Figure 9.5i**  
 Environmental Statement  
 Landscape and Ecological  
 Mitigation

Sheet 9 of 21

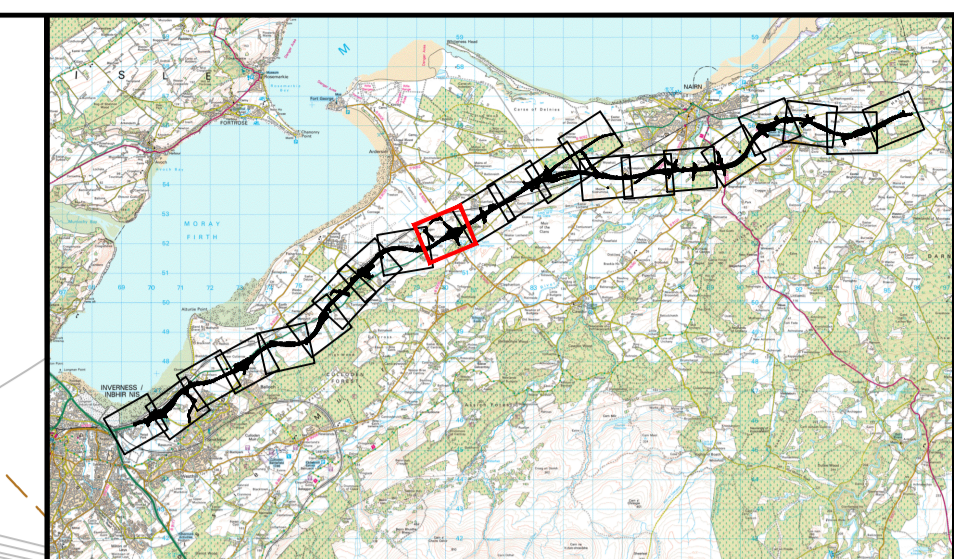
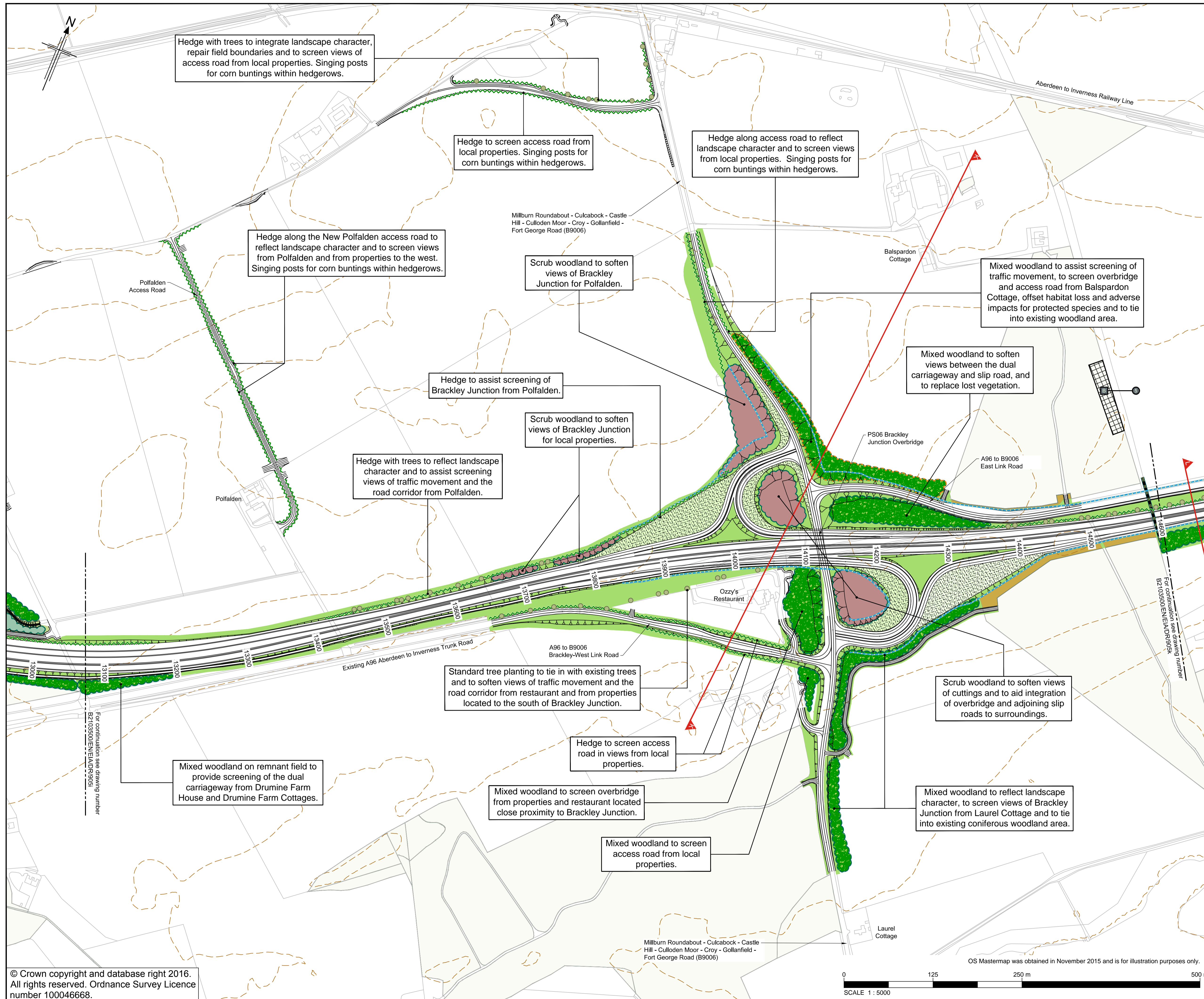
Drawing status	FINAL	
Scale	1:5000 @ A3	DO NOT SCALE
Jacobs No.	B2103500	
BIM no.		
Drawing number	B2103500/EN/EIA/DR/905i	Rev 0

This drawing is not to be used in whole or part other than for the intended purpose and project as defined on this drawing. Refer to the contract for full terms and conditions.

© Crown copyright and database right 2016.  
 All rights reserved. Ordnance Survey Licence  
 number 100046668.



OS Mastermap was obtained in November 2015 and is for illustration purposes only.



**Legend**

- Proposed Scheme (as per Draft Orders)
- SUDS Detention Basin/Pond \*\* (Green = Basin / Blue = Detention Pond)
- Existing Vegetation / Approximate area of Existing Vegetation to be Retained (M) Managed area
- Existing Contours (5m Intervals)
- Cross Section Locations \*

**Landscape and Ecological Mitigation Proposals**

- Landscape Planting Proposals
- Ecological Planting Proposals
- Ecological and Landscape Planting Proposals
- Coniferous Woodland
- Deciduous Woodland
- Mixed Woodland
- Riparian Woodland
- Scrub Woodland
- Feathered Tree Planting
- Heavy Standard Deciduous Trees
- Hedgerow
- Hedgerow with Trees
- Species Rich Grassland
- Wet Grassland Mix
- Verge Grass
- Landscape Earthworks
- Bat Box Provision with number
- Proposed Noise Mitigation
- Dry Mammal Underpass
- Culvert / Bridge with provision for mammal crossing (see individual labels)
- Mammal Fencing
- Hibernacula Locations

\* See Figure 9.6 for Cross Sections  
 \*\* Actual shape of pond/basin will be subject to detailed design

Rev	Rev. Date	Purpose of revision	SHF	IL	KS	EHG	Apprv
0	NOV 2016	ES Publication					

**JACOBS**  
 95 Bothwell St, Glasgow, G2 7HX  
 Tel: +44(0)141 243 8300 Fax: +44(0)141 226 3109  
 www.jacobs.com

**TRANSPORT SCOTLAND**  
 COMHDAIL ALBA

**A96 DUALLING**  
 INVERNESS TO NAIRN  
 (incl. Nairn Bypass)

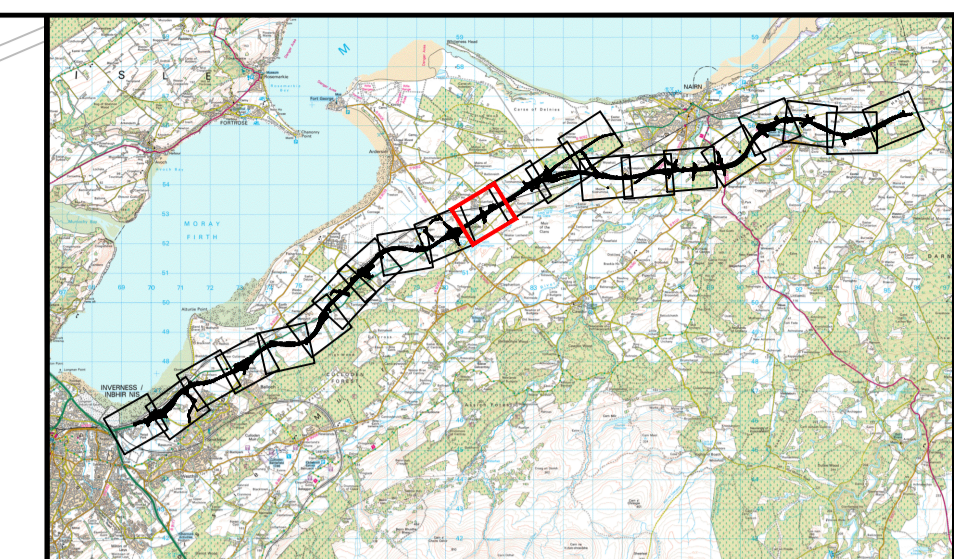
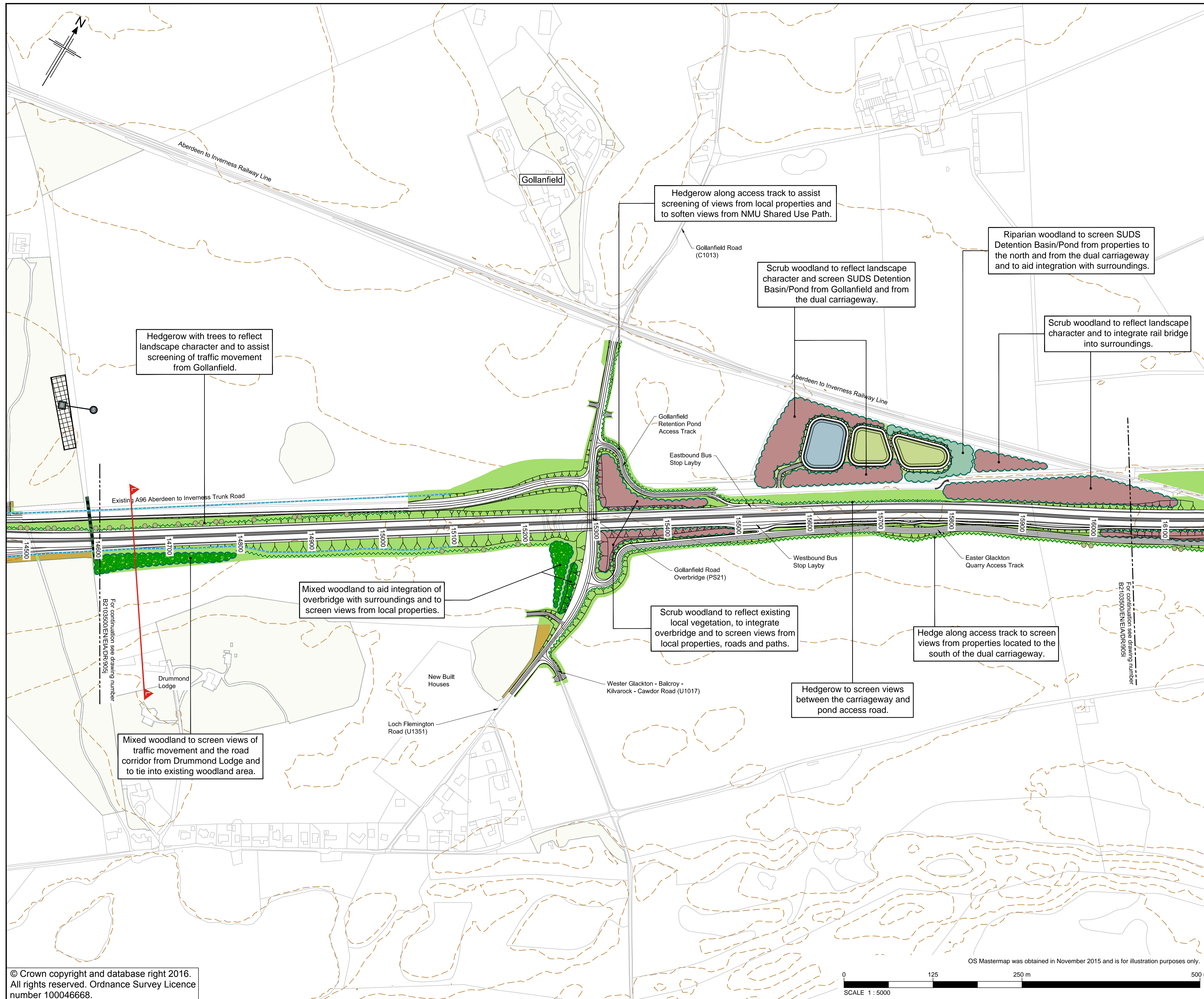
Drawing title: **Figure 9.5j Environmental Statement Landscape and Ecological Mitigation** Sheet 10 of 21

Drawing status: **FINAL**

Scale	1:5000 @ A3	DO NOT SCALE
Jacobs No.	B2103500	
BIM no.		
Drawing number	B2103500/EN/EIA/DR/905j	Rev 0

OS Mastermap was obtained in November 2015 and is for illustration purposes only.

© Crown copyright and database right 2016. All rights reserved. Ordnance Survey Licence number 100046668.



**Legend**

- Proposed Scheme (as per Draft Orders)
- SUDS Detention Basin/Pond \*\* (Green = Basin / Blue = Detention Pond)
- Existing Vegetation / Approximate area of Existing Vegetation to be Retained (M) Managed area
- Existing Contours (5m Intervals)
- Cross Section Locations \*

**Landscape and Ecological Mitigation Proposals**

- Landscape Planting Proposals
- Ecological Planting Proposals
- Ecological and Landscape Planting Proposals
- Coniferous Woodland
- Deciduous Woodland
- Mixed Woodland
- Riparian Woodland
- Scrub Woodland
- Feathered Tree Planting
- Heavy Standard Deciduous Trees
- Hedgerow
- Hedgerow with Trees
- Species Rich Grassland
- Wet Grassland Mix
- Verge Grass
- Landscape Earthworks
- Bat Box Provision with number
- Proposed Noise Mitigation
- Dry Mammal Underpass
- Culvert / Bridge with provision for mammal crossing (see individual labels)
- Mammal Fencing
- Hibernacula Locations

\* See Figure 9.6 for Cross Sections  
 \*\* Actual shape of pond/basin will be subject to detailed design

Rev	Rev. Date	Purpose of revision	SHF	IL	KS	EHG	Appr'd
0	NOV 2016	ES Publication					

**JACOBS**  
 95 Bothwell St, Glasgow, G2 7HX  
 Tel: +44(0)141 243 8300 Fax: +44(0)141 226 3109  
 www.jacobs.com

Client  
  
 TRANSPORT SCOTLAND  
 COMHAIL ALBA

Project  
  
**A96 DUALLING**  
 INVERNESS TO NAIRN  
 (incl. Nairn Bypass)

Drawing title  
**Figure 9.5k**  
 Environmental Statement  
 Landscape and Ecological Mitigation  
 Sheet 11 of 21

Drawing status: **FINAL**

Scale: 1:5000 @ A3 **DO NOT SCALE**

Jacobs No. B2103500

BIM no.

Drawing number: **B2103500/EN/EIA/DR/905k** Rev **0**

This drawing is not to be used in whole or part other than for the intended purpose and project as defined on this drawing. Refer to the contract for full terms and conditions.

© Crown copyright and database right 2016.  
 All rights reserved. Ordnance Survey Licence number 100046668.

