

- Legend**
- Option 1A
 - Option 1A (MV) *
 - Nairn Bypass Options
 - Representative Residential Receptors
 - Designated Sites Transect
 - ⊙ Highland Council Air Quality Monitoring Station
- Assessed Designated Sites**
- Inner Moray Firth Special Protection Area (SPA) **
 - Kildrummie Kames Site of Special Scientific Interest (SSSI) **
 - Longman and Castle Stuart Bays Site of Special Scientific Interest (SSSI) **

* MV = Morayston Variant. For this route, only the variation to Option 1A has been shown. Where no variation is shown, Option 1A (MV) is as Option 1A.

** Downloaded from SNHI, Mar 2014.

1	29/08/2014	DMRB Stage 2 Report	KA	AS	NB	EHB
0	01/07/2014	Initial Issue	KA	AS	NB	GH
Rev.	Rev. Date	Purpose of revision	Orig/Dwn	Checkd	Rev'd	Apprv'd

JACOBS
 95 Bothwell Street, Glasgow, G2 7HX, UK.
 Tel: +44(0)141 204 2511 Fax: +44(0)141 226 3109
www.jacobs.com

Client

TRANSPORT SCOTLAND
CORPORATE ALBA

Project

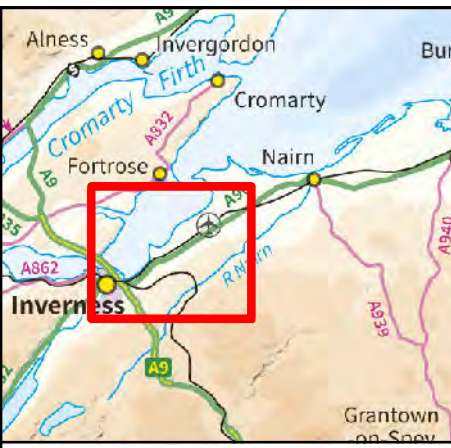
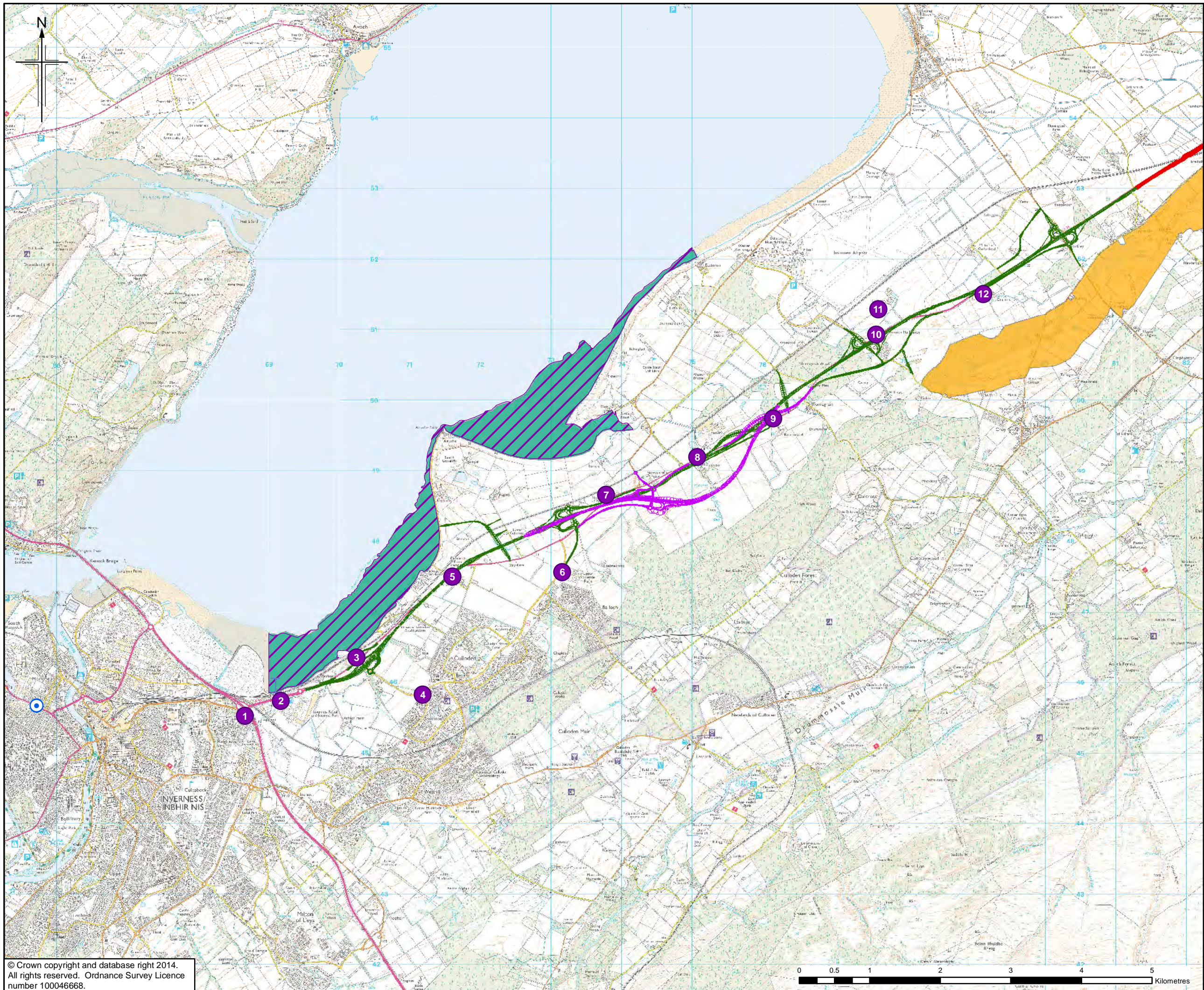
A95
DUALLING
INVERNESS TO NAIRN
(incl. Nairn Bypass)

Drawing title

**DMRB STAGE 2
 REPRESENTATIVE RECEPTOR LOCATIONS
 OPTION 1A AND 1A (MV)**

Drawing Status	FINAL
Scale	1:50,000 @ A3 DO NOT SCALE
Jacobs No.	B1557601
Client No.	
Drawing number	Figure 8.1
	Rev 1





- Legend**
- Option 1B
 - Option 1B (MV) *
 - Nairn Bypass Options
 - Representative Residential Receptors
 - Designated Sites Transect
 - ⊙ Highland Council Air Quality Monitoring Station
- Assessed Designated Sites**
- Inner Moray Firth Special Protection Area (SPA) **
 - Kildrummie Kames Site of Special Scientific Interest (SSSI) **
 - Longman and Castle Stuart Bays Site of Special Scientific Interest (SSSI) **

* MV = Morayston Variant. For this route, only the variation to Option 1B has been shown. Where no variation is shown, Option 1B (MV) is as Option 1B.

** Downloaded from SNHI, Mar 2014.

1	29/08/2014	DMRB Stage 2 Report	KA	AS	NB	EHB
0	01/07/2014	Initial Issue	KA	AS	NB	GH
Rev.	Rev. Date	Purpose of revision	Orig/Dwn	Checked	Rev'd	Apprv'd

JACOBS
95 Botwell Street, Glasgow, G2 7HX, UK
Tel: +44(0)141 204 2511 Fax: +44(0)141 226 3109
www.jacobs.com

Client
TRANSPORT SCOTLAND
CORPORATE ALBA

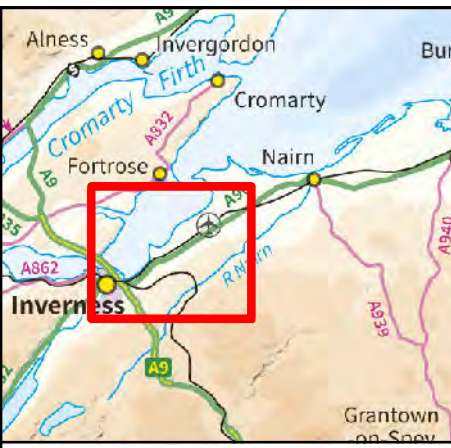
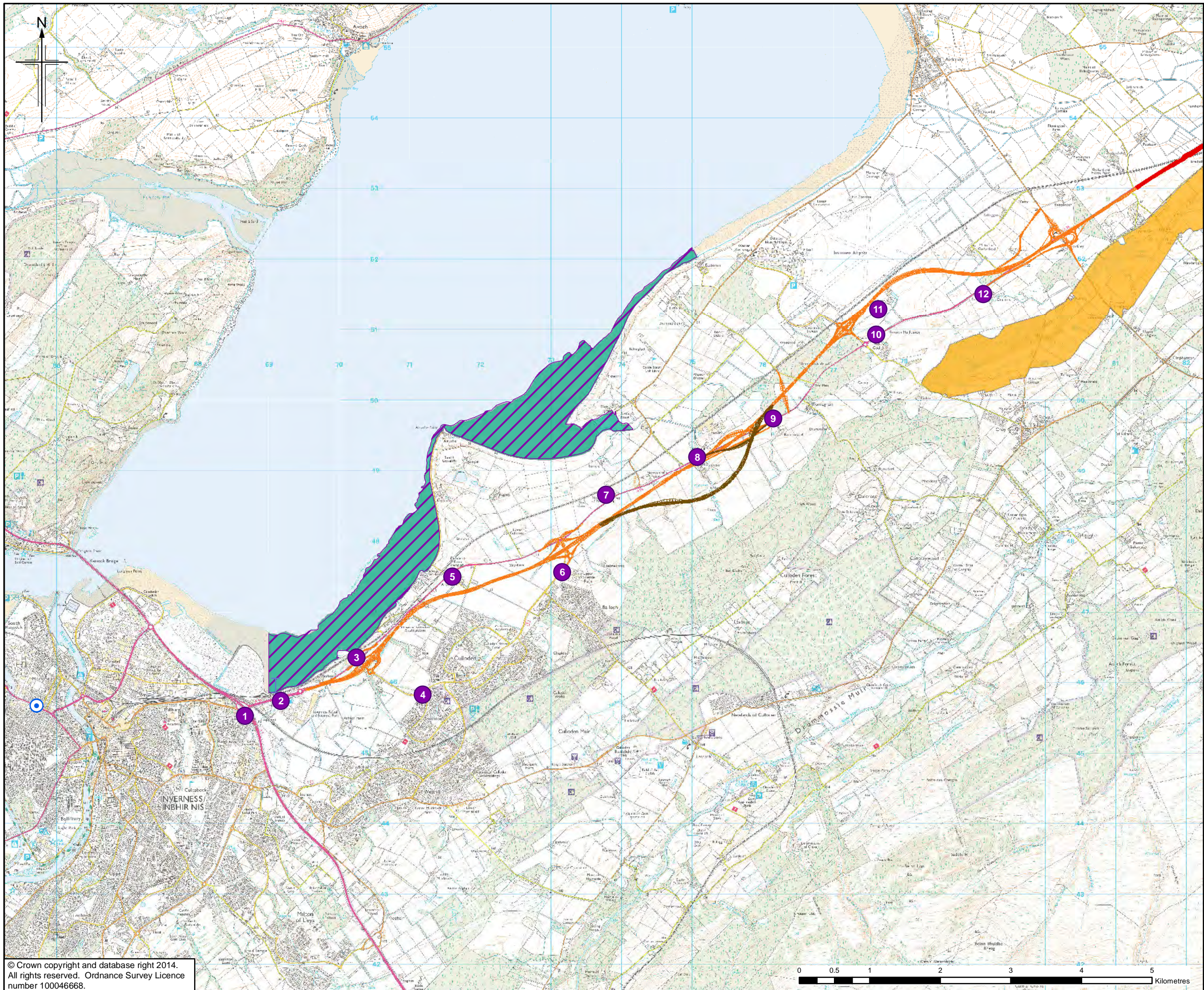
Project
A95 DUALLING
INVERNESS TO NAIRN
(incl. Nairn Bypass)

Drawing title
DMRB STAGE 2 REPRESENTATIVE RECEPTOR LOCATIONS OPTION 1B AND 1B (MV)

Drawing Status	FINAL	Sheet 1 of 1
Scale	1:50,000 @ A3	DO NOT SCALE
Jacobs No.	B1557601	
Client No.		
Drawing number	Figure 8.2	Rev 1

This drawing is not to be used in whole or part other than for the intended purpose and project as defined on this drawing. Refer to the contract for full terms and conditions.





- Legend**
- Option 1C
 - Option 1C (MV) *
 - Nairn Bypass Options
 - Representative Residential Receptors
 - Designated Sites Transect
 - ⊙ Highland Council Air Quality Monitoring Station
- Assessed Designated Sites**
- Inner Moray Firth Special Protection Area (SPA) **
 - Kildrummie Kames Site of Special Scientific Interest (SSSI) **
 - Longman and Castle Stuart Bays Site of Special Scientific Interest (SSSI) **

* MV = Morayston Variant. For this route, only the variation to Option 1C has been shown. Where no variation is shown, Option 1C (MV) is as Option 1C.

** Downloaded from SNHI, Mar 2014.

1	29/08/2014	DMRB Stage 2 Report	KA	AS	NB	EHB
0	01/07/2014	Initial Issue	KA	AS	NB	GH
Rev.	Rev. Date	Purpose of revision	Orig/Dwn	Checkd	Rev'd	Apprv'd

JACOBS
95 Bothwell Street, Glasgow, G2 7HX, UK
Tel: +44(0)141 204 2511 Fax: +44(0)141 226 3109
www.jacobs.com

Client: **TRANSPORT SCOTLAND**
CORPORATE ALBA

Project: **A95 DUALLING**
INVERNESS TO NAIRN
(incl. Nairn Bypass)

Drawing title: **DMRB STAGE 2 REPRESENTATIVE RECEPTOR LOCATIONS OPTION 1C AND 1C (MV)**

Sheet 1 of 1

Drawing Status: **FINAL**

Scale: **1:50,000 @ A3 DO NOT SCALE**

Jacobs No. **B1557601**

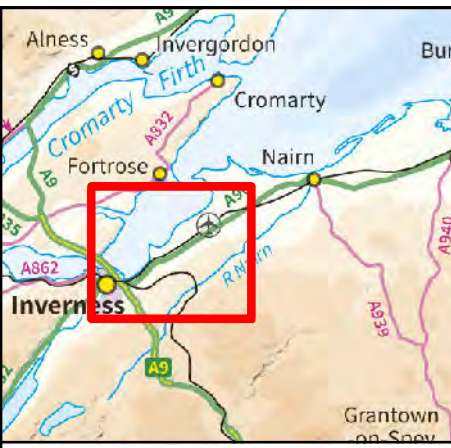
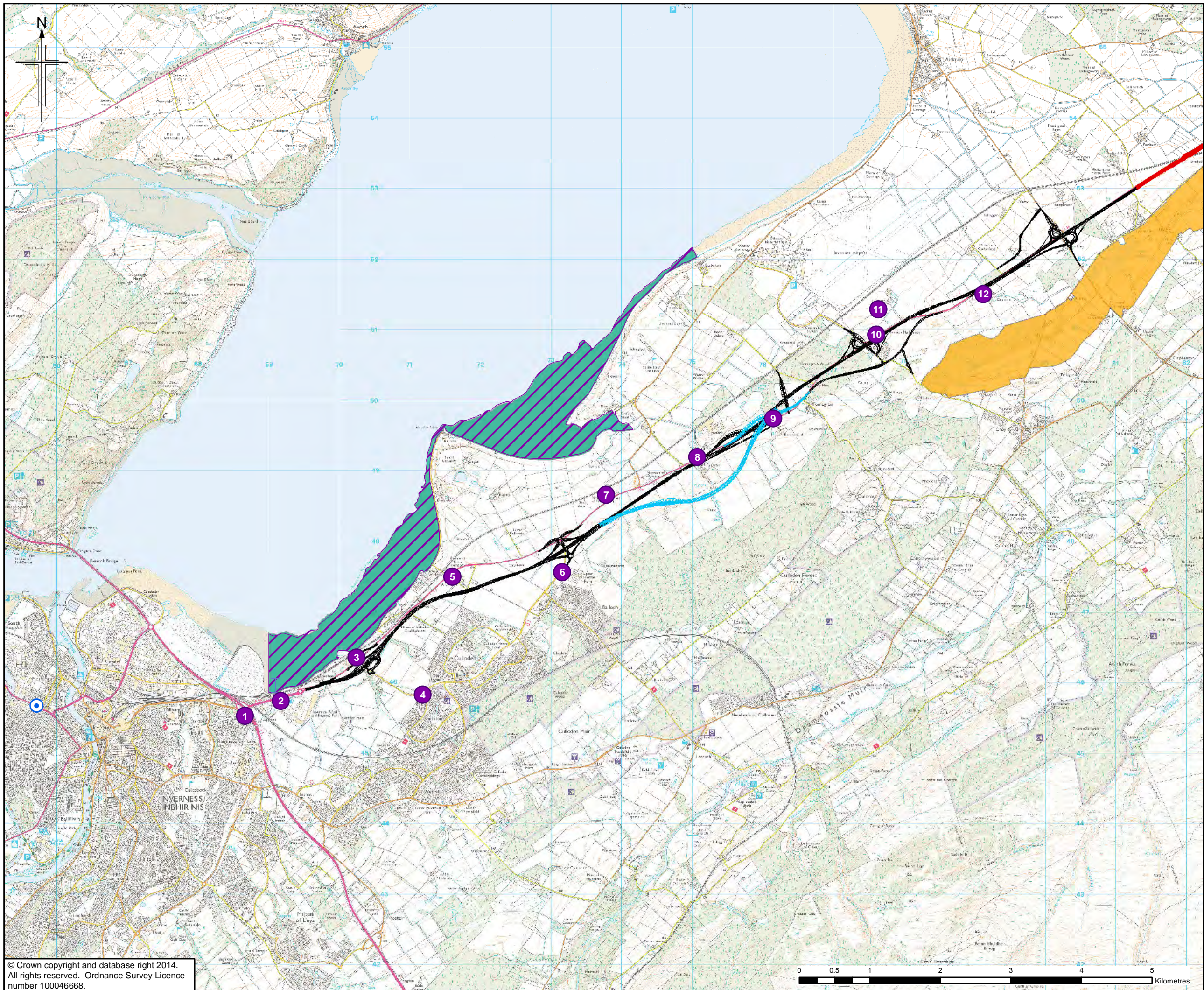
Client No.

Drawing number: **Figure 8.3**

Rev **1**

This drawing is not to be used in whole or part other than for the intended purpose and project as defined on this drawing. Refer to the contract for full terms and conditions.





- Legend**
- Option 1D
 - Option 1D (MV) *
 - Nairn Bypass Options
 - Representative Residential Receptors
 - Designated Sites Transect
 - ⊙ Highland Council Air Quality Monitoring Station
- Assessed Designated Sites**
- ▨ Inner Moray Firth Special Protection Area (SPA) **
 - Kildrummie Kames Site of Special Scientific Interest (SSSI) **
 - Longman and Castle Stuart Bays Site of Special Scientific Interest (SSSI) **

* MV = Morayston Variant. For this route, only the variation to Option 1D has been shown. Where no variation is shown, Option 1D (MV) is as Option 1D.

** Downloaded from SNHI, Mar 2014.

1	29/08/2014	DMRB Stage 2 Report	KA	AS	NB	EHB
0	01/07/2014	Initial Issue	KA	AS	NB	GH
Rev.	Rev. Date	Purpose of revision	Orig/Dwn	Checked	Rev'd	Apprv'd

JACOBS
95 Bothwell Street, Glasgow, G2 7HX, UK
Tel: +44(0)141 204 2511 Fax: +44(0)141 226 3109
www.jacobs.com

Client
TRANSPORT SCOTLAND
CORPORATE ALBA

Project
A95 DUALLING
INVERNESS TO NAIRN
(incl. Nairn Bypass)

Drawing title
DMRB STAGE 2 REPRESENTATIVE RECEPTOR LOCATIONS OPTION 1D AND 1D (MV)

Sheet 1 of 1

Drawing Status: FINAL

Scale: 1:50,000 @ A3 DO NOT SCALE

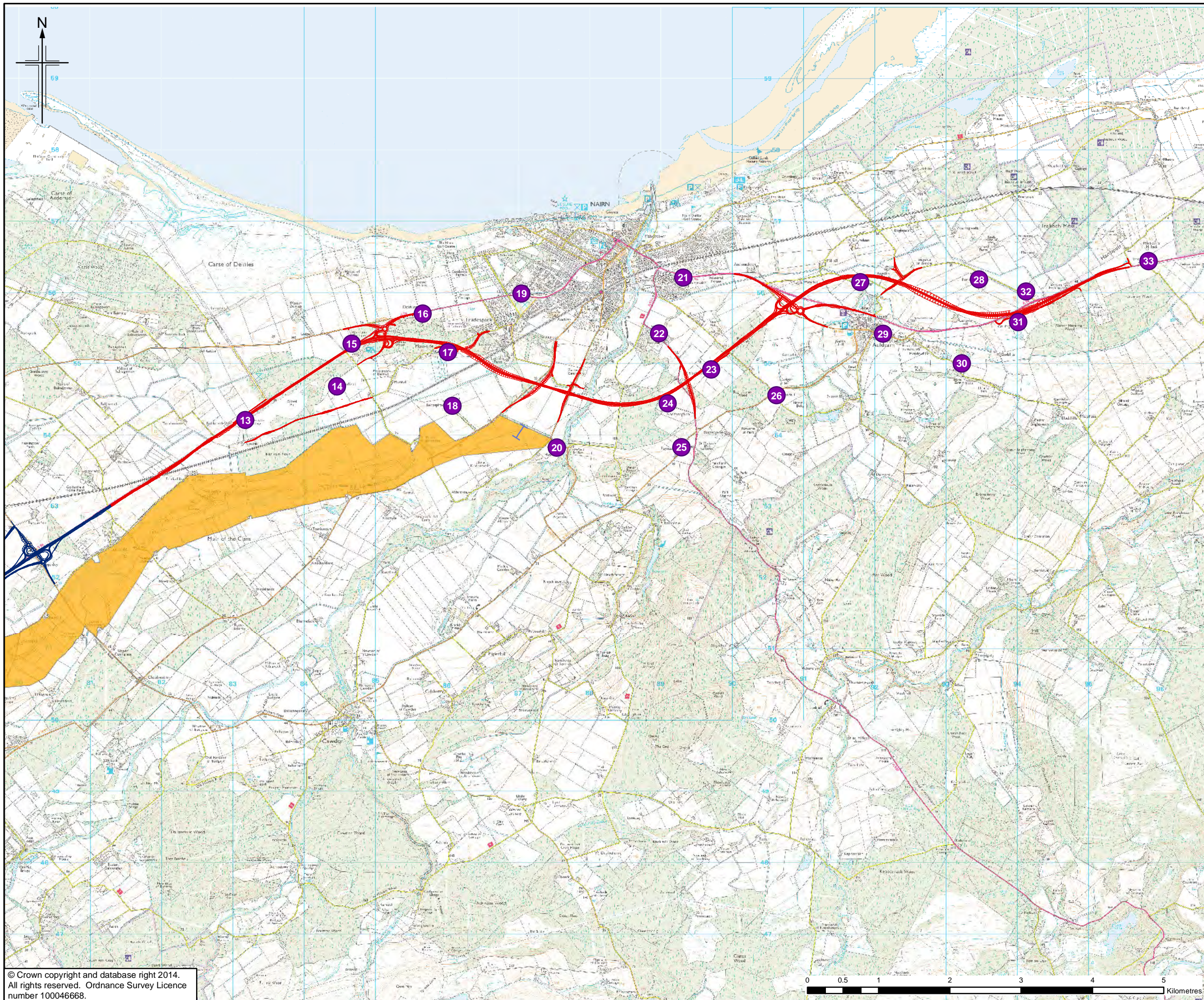
Jacobs No. B1557601

Client No.

Drawing number **Figure 8.4** Rev 1

This drawing is not to be used in whole or part other than for the intended purpose and project as defined on this drawing. Refer to the contract for full terms and conditions.





- Legend**
- Option 2A
 - Inverness to Gollanfield Options
 - Representative Residential Receptors
 - Designated Sites Transect
- Assessed Designated Sites**
- Kildrummie Kames Site of Special Scientific Interest (SSSI) *

* Downloaded from SNHi, Mar 2014.

1	29/08/2014	DMRB Stage 2 Report	KA	AS	NB	EHB
0	01/07/2014	Initial Issue	KA	AS	NB	GH
Rev.	Rev. Date	Purpose of revision	Orig/Dwn	Check'd	Rev'd	Apprv'd

JACOBS
 95 Botwell Street, Glasgow, G2 7HX, UK.
 Tel: +44(0)141 204 2511 Fax: +44(0)141 226 3109
 www.jacobs.com

Client

 TRANSPORT SCOTLAND
 COTHRHAIE ALBA

Project

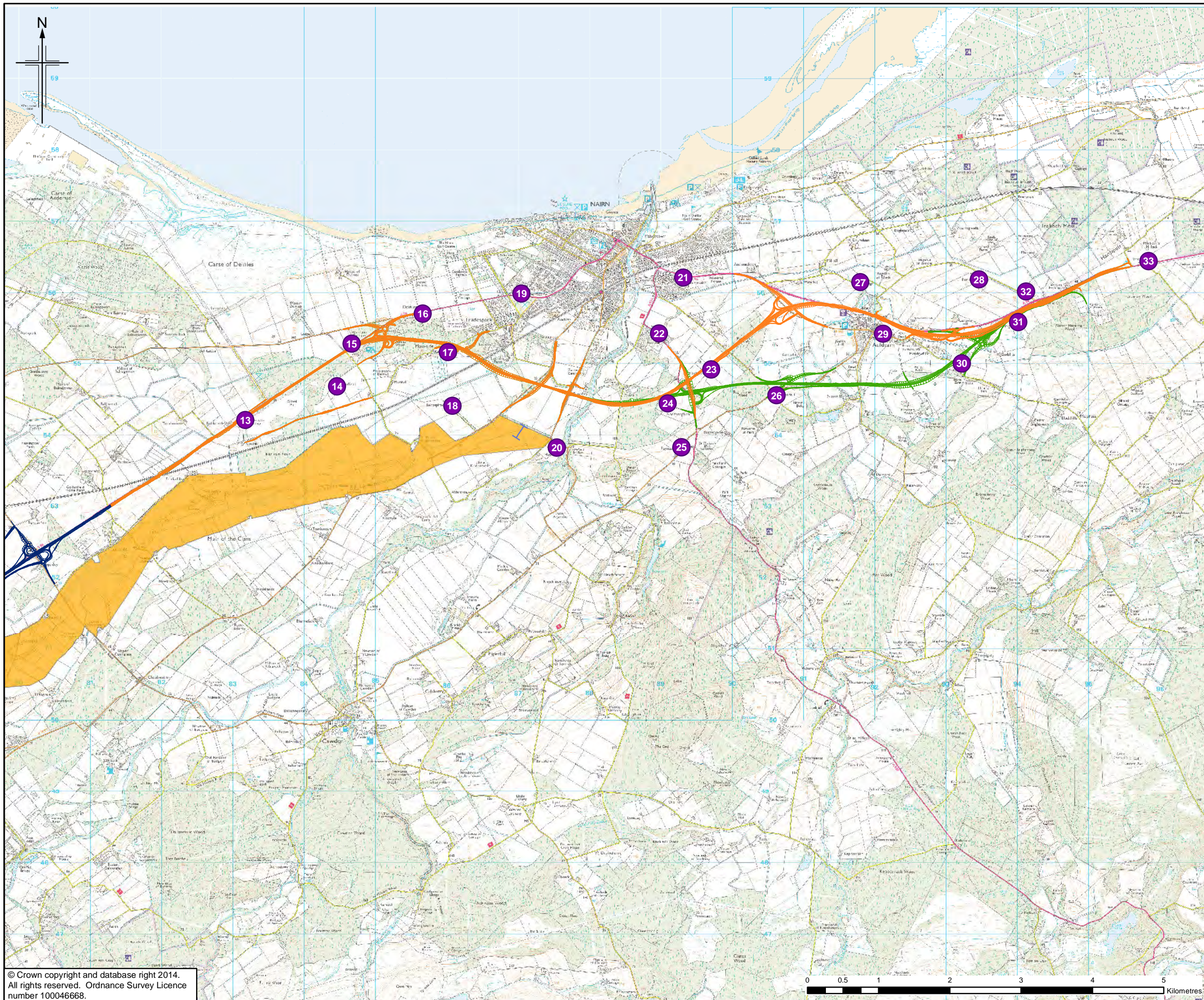
A95
 DUALLING
 INVERNESS TO NAIRN
 (incl. Nairn Bypass)

Drawing title
**DMRB STAGE 2
 REPRESENTATIVE RECEPTOR LOCATIONS
 OPTION 2A**

Drawing Status	FINAL	Sheet 1 of 1
Scale	1:50,000 @ A3	DO NOT SCALE
Jacobs No.	B1557601	
Client No.		
Drawing number	Figure 8.5	Rev 1



This drawing is not to be used in whole or part other than for the intended purpose and project as defined on this drawing. Refer to the contract for full terms and conditions.



- Legend**
- Option 2B
 - Option 2C *
 - Inverness to Gollanfield Options
 - Representative Residential Receptors
 - Designated Sites Transect
 - Assessed Designated Sites
 - Kildrummie Kames Site of Special Scientific Interest (SSSI) **

* For this route, only the variation to Option 2B has been shown. Where no variation is shown, Option 2C is as Option 2B.
 ** Downloaded from SNHi, Mar 2014.

1	29/08/2014	DMRB Stage 2 Report	KA	AS	NB	EHB
0	01/07/2014	Initial Issue	KA	AS	NB	GH
Rev.	Rev. Date	Purpose of revision	Orig/Dwn	Checkd	Rev'd	Apprv'd

JACOBS
 95 Botwell Street, Glasgow, G2 7HX, UK
 Tel: +44(0)141 204 2511 Fax: +44(0)141 226 3109
 www.jacobs.com

Client

 TRANSPORT SCOTLAND
 COTHRHAIE ALBA

Project

A95
 DUALLING
 INVERNESS TO NAIRN
 (incl. Nairn Bypass)

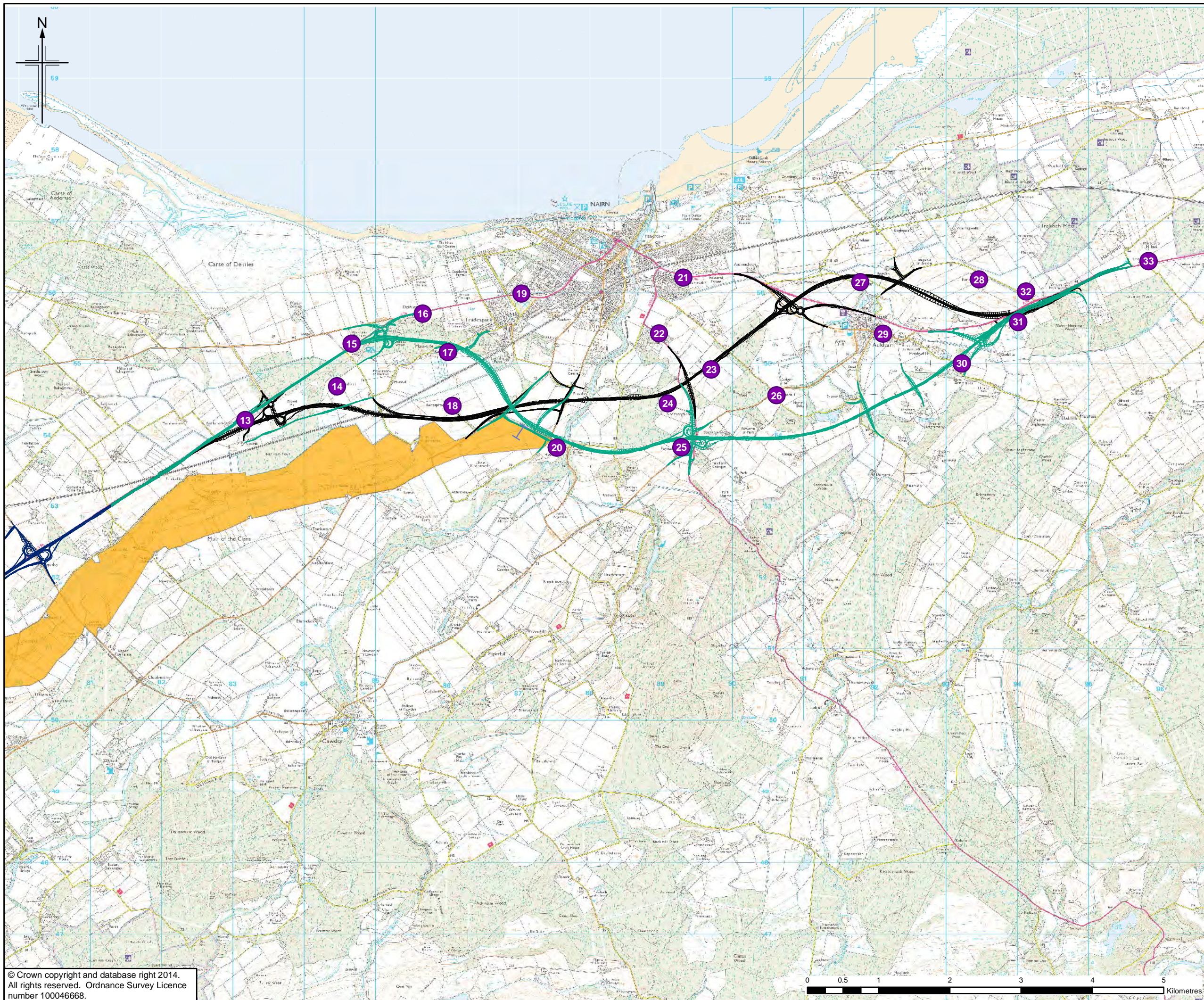
Drawing title
DMRB STAGE 2 REPRESENTATIVE RECEPTOR LOCATIONS OPTION 2B and 2C

Sheet 1 of 1

Drawing Status	FINAL
Scale	1:50,000 @ A3 DO NOT SCALE
Jacobs No.	B1557601
Client No.	
Drawing number	Figure 8.6
Rev	1

This drawing is not to be used in whole or part other than for the intended purpose and project as defined on this drawing. Refer to the contract for full terms and conditions.





- Legend**
- Option 2D
 - Option 2E *
 - Inverness to Gollanfield Options
 - Representative Residential Receptors
 - Designated Sites Transect
 - Assessed Designated Sites
 - Kildrummie Kames Site of Special Scientific Interest (SSSI) **

* For this route, only the variation to Option 2D has been shown. Where no variation is shown, Option 2E is as Option 2D.
 ** Downloaded from SNHi, Mar 2014.

1	29/08/2014	DMRB Stage 2 Report	KA	AS	NB	EHB
0	01/07/2014	Initial Issue	KA	AS	NB	GH
Rev.	Rev. Date	Purpose of revision	Orig/Dwn	Check'd	Rev'd	Apprv'd

JACOBS
 95 Botwell Street, Glasgow, G2 7HX, UK
 Tel: +44(0)141 204 2511 Fax: +44(0)141 226 3109
 www.jacobs.com

Client

 TRANSPORT SCOTLAND
 COPHERAE ALBA

Project

A95
 DUALLING
 INVERNESS TO NAIRN
 (incl. Nairn Bypass)

Drawing title
**DMRB STAGE 2
 REPRESENTATIVE RECEPTOR LOCATIONS
 OPTION 2D and 2E**

Sheet 1 of 1

Drawing Status: **FINAL**

Scale: **1:50,000 @ A3 DO NOT SCALE**

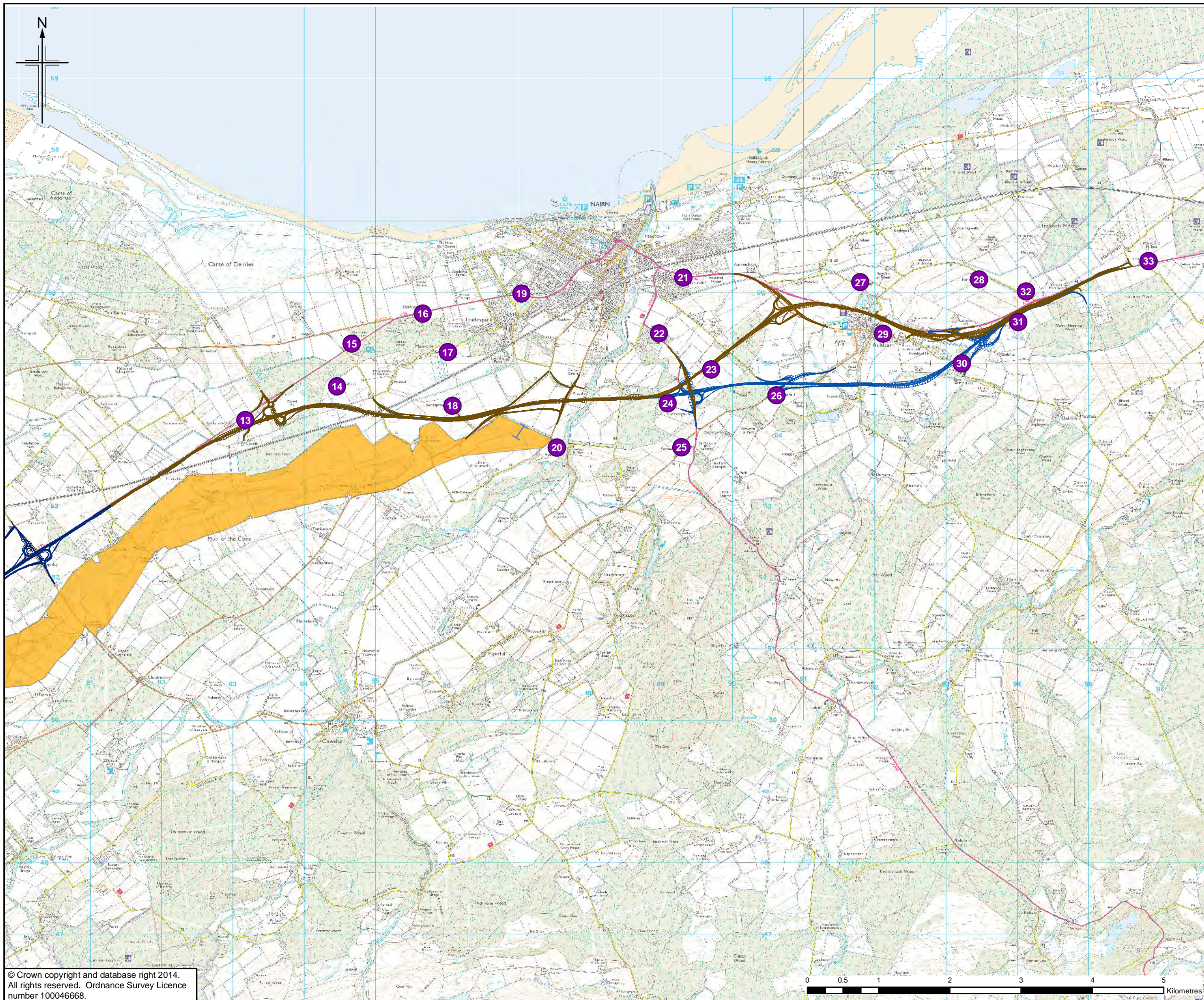
Jacobs No. **B1557601**

Client No.

Drawing number **Figure 8.7** Rev **1**

This drawing is not to be used in whole or part other than for the intended purpose and project as defined on this drawing. Refer to the contract for full terms and conditions.





- Legend**
- Option 2F
 - Option 2G *
 - Inverness to Gollanfield Options
 - Representative Residential Receptors
 - Designated Sites Transect
 - Assessed Designated Sites
 - Kildrummie Kames Site of Special Scientific Interest (SSSI) **

* For this route, only the variation to Option 2F has been shown. Where no variation is shown, Option 2G is as Option 2F.
 ** Downloaded from SNHi, Mar 2014.

1	29/08/2014	DMRB Stage 2 Report	KA	AS	NB	EHB
0	01/07/2014	Initial Issue	KA	AS	NB	GH
Rev.	Rev. Date	Purpose of revision	Orig/Dwn	Check'd	Rev'd	Apprv'd

JACOBS
 95 Botwell Street, Glasgow, G2 7HX, UK.
 Tel: +44(0)141 204 2511 Fax: +44(0)141 226 3109
 www.jacobs.com

Client

 TRANSPORT SCOTLAND
 COPHERAE ALBA

Project

A95
 DUALLING
 INVERNESS TO NAIRN
 (incl. Nairn Bypass)

Drawing title
**DMRB STAGE 2
 REPRESENTATIVE RECEPTOR LOCATIONS
 OPTION 2F and 2G**

Sheet 1 of 1

Drawing Status: **FINAL**

Scale: **1:50,000 @ A3 DO NOT SCALE**

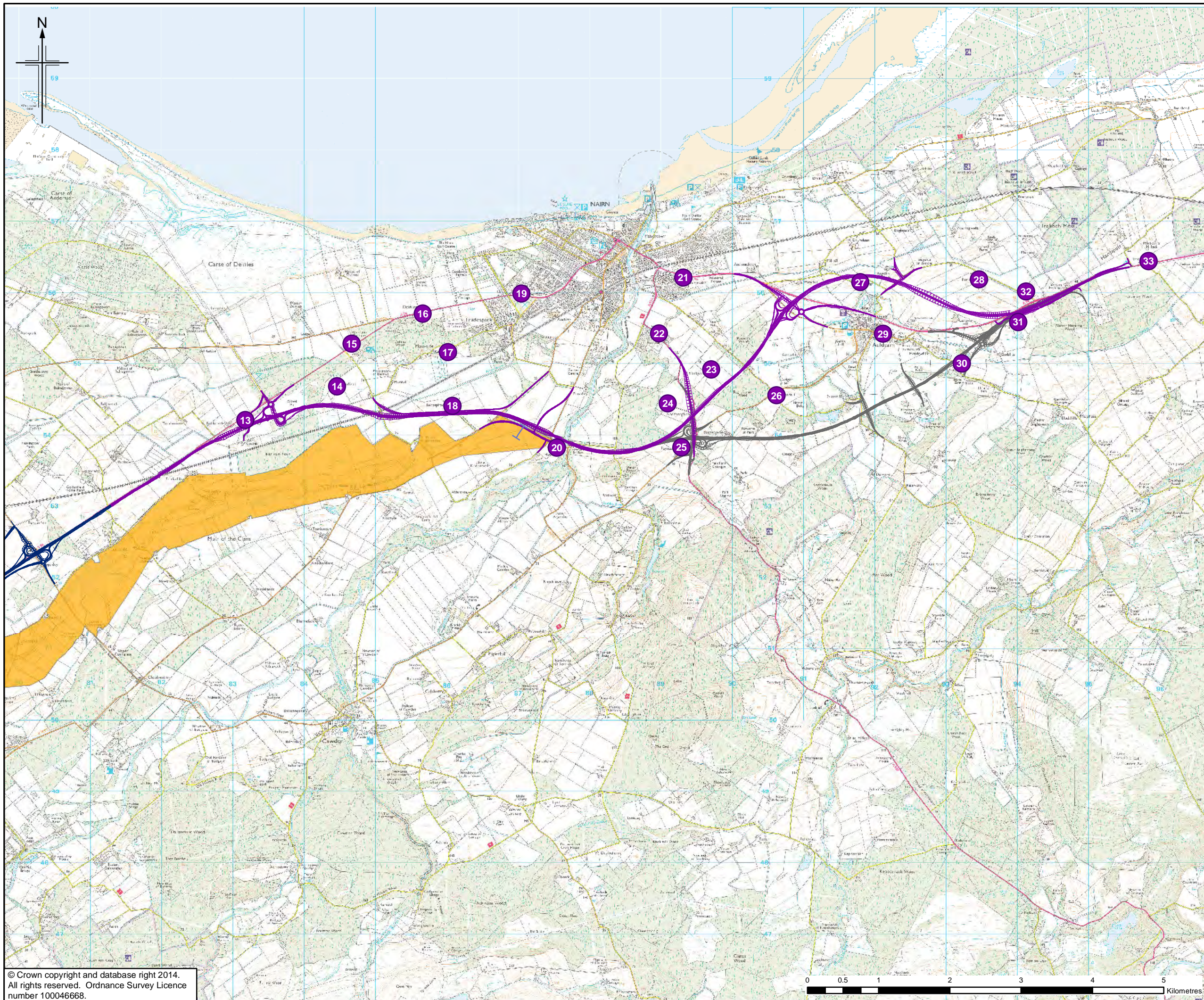
Jacobs No. **B1557601**

Client No.

Drawing number **Figure 8.8** Rev **1**

This drawing is not to be used in whole or part other than for the intended purpose and project as defined on this drawing. Refer to the contract for full terms and conditions.





- Legend**
- Option 2H
 - Option 2I *
 - Inverness to Gollanfield Options
 - Representative Residential Receptors
 - Designated Sites Transect
- Assessed Designated Sites**
- Kildrummie Kames Site of Special Scientific Interest (SSSI) **

* For this route, only the variation to Option 2H has been shown. Where no variation is shown, Option 2I is as Option 2H.
 ** Downloaded from SNHi, Mar 2014.

1	29/08/2014	DMRB Stage 2 Report	KA	AS	NB	EHB
0	01/07/2014	Initial Issue	KA	AS	NB	GH
Rev.	Rev. Date	Purpose of revision	Orig/Dwn	Checkd	Rev'd	Apprv'd

JACOBS
 95 Botwell Street, Glasgow, G2 7HX, UK.
 Tel: +44(0)141 204 2511 Fax: +44(0)141 226 3109
 www.jacobs.com

Client

 TRANSPORT SCOTLAND
 COTHRHAIE ALBA

Project

A95
 DUALLING
 INVERNESS TO NAIRN
 (incl. Nairn Bypass)

Drawing title
**DMRB STAGE 2
 REPRESENTATIVE RECEPTOR LOCATIONS
 OPTION 2H and 2I**

Sheet 1 of 1

Drawing Status: **FINAL**

Scale: **1:50,000 @ A3 DO NOT SCALE**

Jacobs No. **B1557601**

Client No.

Drawing number **Figure 8.9** Rev **1**

This drawing is not to be used in whole or part other than for the intended purpose and project as defined on this drawing. Refer to the contract for full terms and conditions.