

Stirling Alloa Kincardine Railway and Linked Improvements Project – Line now open

Transport Scotland's reopening of the Stirling-Alloa-Kincardine route is one of the most important railway infrastructure projects Scotland has seen for decades.

Full Steam Ahead as Railway Launches



Hundreds of residents from across Central Scotland gathered at Alloa station on 15 May as the Stirling-Alloa-Kincardine railway line reopened after 40 years. The historic occasion was marked in style as guests travelled from the newly built Alloa station for a return trip to Stirling station aboard a steam train hauled by The Great Marquess 61994, a majestic locomotive built in 1939.

Transport Minister Stewart Stevenson joined local people of all ages as they climbed aboard the steam train to celebrate the culmination of eight years' work to re-establish the rail line. It is the first time a passenger train has been seen at Alloa station since it closed in 1968. Among the invited guests were employees of the previous railway and over 30 schoolchildren from local primary and secondary schools.

Guests also enjoyed a special exhibition organised by Clackmannanshire Council's Museum and Heritage Service which looked back over the history of the railway



The launch took place at the new Alloa station 40 years after the original station closed. Transport Minister Stewart Stevenson aboard the Great Marquess.

in the Wee County and a display of photographs inspired by rail travel from members of Stirling & District Camera Club. Hillfoots Music for Youth, whose members are youngsters from the area, entertained guests with a selection of pieces.

With passenger services underway since Monday 19 May, the reopening is another important part of Transport Scotland's programme of investment in major rail infrastructure, creating high quality public transport links across Scotland.

Mr Stevenson said that this was a

great day for the people of Alloa and central Scotland who could now look forward to much improved rail connections:

"This is a fantastic day. It has been a long time coming, but after 40 years we can now all look forward to passenger trains travelling through Alloa station once again.

"This is one of the most important infrastructure projects Scotland has seen in decades, and the significance of this project extends beyond Stirling, Alloa and Kincardine. The whole of Scotland is set to benefit.



Pictures clockwise from left: The Great Marquess steams into Alloa station; Clackmannanshire Council Provost Derek Stewart with Stirling Council Provost Fergus Reid; Hillfoots Music for Youth provided the entertainment at the event; a fascinating exhibition looked back at the long history of the railway in Alloa; guests enjoyed a display of photographs by Stirling and District Camera Club.

“This is a vital new link which will provide improved links to education and employment opportunities for communities across central Scotland, promote inward investment and increase sustainable economic growth to the area. It will also bring faster, more efficient freight routes for businesses, taking more lorries off our roads and onto rail.

“This project has not been without its challenges, but we should celebrate a great day for the people of Alloa who can now look forward to much improved rail connections.

“Transport Scotland has done a good job since taking the reins of this project last summer.”

The celebrations continued over the weekend with project promoter Clackmannanshire Council holding a celebratory fayre for the community which was attended by over 6,000 people. The fun packed day featured an array of family entertainment, from a parade and pony rides to falconry and a fun fair.

Council leader Janet Cadenhead said of the reopening:

“Clackmannanshire Council has campaigned for decades for the reopening of the rail link, and I would like to thank the many officers who have played a part in making this come about. The Council’s consistent involvement was key in drawing together the complex planning, building and legal issues in this massive project. Indeed, the first private rail bill ever approved by the Scottish Parliament in 2004 was lodged by the Council.

“The railway will breathe new life into Alloa and Clackmannanshire, encouraging businesses and jobs while providing our citizens with convenient, safe and fast public transport to Stirling, Glasgow and Edinburgh. I look forward to using the railway for many years to come.”

Pictures left to right: Provost Derek Stewart and Council leader Janet Cadenhead led the fayre parade in Chitty Chitty Bang Bang; Crowds were drawn to the fayre by Alloa & Bowmar Pipe Band; This penny farthing was one of the many modes of transport on display in the transport-themed parade.



Winners Strike Gold

Five lucky members of the public won a pair of tickets to attend the launch of the new Stirling-Alloa-Kincardine railway line from a Golden Tickets competition in the Alloa Advertiser.

The winners, 75 year old Cathie Dennis from Alloa, 11 year old Kirsty McPherson from Dollar, 58 year old Jane Campbell from Alloa, 63 year old John Stewart from Tullibody and 63 year old Margaret Stoddart from Sauchie, all enjoyed the official reopening celebrations on Thursday 15 May.

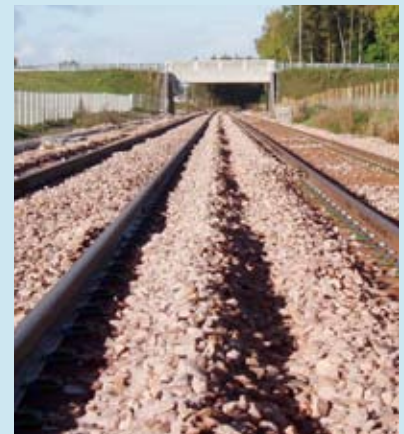
David Beveridge, grandfather and guest of winner Kirsty McPherson said: "We've had a fantastic time and will remember this day for the rest of our lives."



SAK Facts

The Stirling-Alloa-Kincardine Railway project features:

- 22,630m plain line track & cable troughing
- 33,846 rail sleepers
- 79,094 tonnes of ballast
- 29 signals
- 29 AWS (Automatic Warning System) Units
- 19 overbridges
- 13 underbridges
- 4 footbridges
- 3 public level crossings (Waterside, Blackgrange & Cambus)
- 3 private level crossings (Manor Neuk, Manor Powis & Kincardine)
- 1 superstructure (The Forth Viaduct)
- A brand new station at Alloa



New Community Enquiry Details Announced

Community enquiries will now be dealt with by Network Rail, the operators of the railway.

The Network Rail National Helpline is available 24 hours a day, 365 days a year on 08457 11 41 41 for those who have questions about the railway or require assistance with any problems caused by it.

For all enquiries regarding train tickets, ticket refunds, timetables, journey planners and running times, members of the public should call National Rail Enquiries on 08457 48 49 50.

The project team will continue to work closely with Network Rail to provide them with information on the progress of noise measurements and other works still to be completed.

A message from Mary Grant – Managing Director of FirstScotRail



This is an exciting time for the railway in Scotland, with more opportunities to travel, improved punctuality and reliability, greater comfort and provision of facilities and an improved overall customer journey experience.

We welcome the opening of this line between Stirling and Alloa, which will provide a widely accessible and convenient mode of public transport to people living in these areas.

What’s more, the opening of the line will reduce the number of freight trains crossing the Forth Bridge, allowing for additional passenger services to be considered for the benefit of people living in Fife and beyond.

The delivery of this project is testament to the drive and commitment of Transport Scotland, alongside ourselves and industry partners, to provide a continually improving rail network - with services to match - which not only meets the growing requirements of our existing customers but also encourages new customers to choose this mode of public transport.

Play It Safe!

Railways can be a very dangerous so it is important that everyone is fully informed about the risks and how to be safe near a railway.

Train Facts

- Trains can travel at speeds of up to 125 mph
- A train travelling at this speed will take 2000 metres to stop - the length of 20 football pitches!
- Passenger trains weigh in excess of 400 tonnes - over 400 times heavier than a car

Railway Crime Statistics

There are:

- an estimated 27 million cases of trespass on railways every year
- 640,000 objects placed on the line every year
- 4 million objects thrown at trains every year

In addition to this there were 59 deaths in 2007 alone - all of which were preventable.

Even slow moving trains can be involved in accidents with pedestrians who are not paying attention or who haven’t taken the appropriate action to prevent the accident.

It is very important that you NEVER:

- walk across a railway track
- climb on the structures in and around the railway
- damage fencing
- throw missiles or stones
- graffiti trains or railway property
- take risks that can end in tragedy

It is a criminal offence to do any of these things; the line is patrolled by the British Transport Police.

A Note to Parents:

Railways and embankments are often seen by young people as somewhere to drink, smoke and hang out in the warmer evenings. As these areas are often quiet and secluded, the young people feel free from adults and authority which can lead to unsafe behaviour. Five 17 year olds were killed around the time of Christmas 2007 in similar circumstances. Please keep your children away from railway lines.

For more information on the Stirling-Alloa-Kincardine rail link visit www.sakrailway.co.uk

