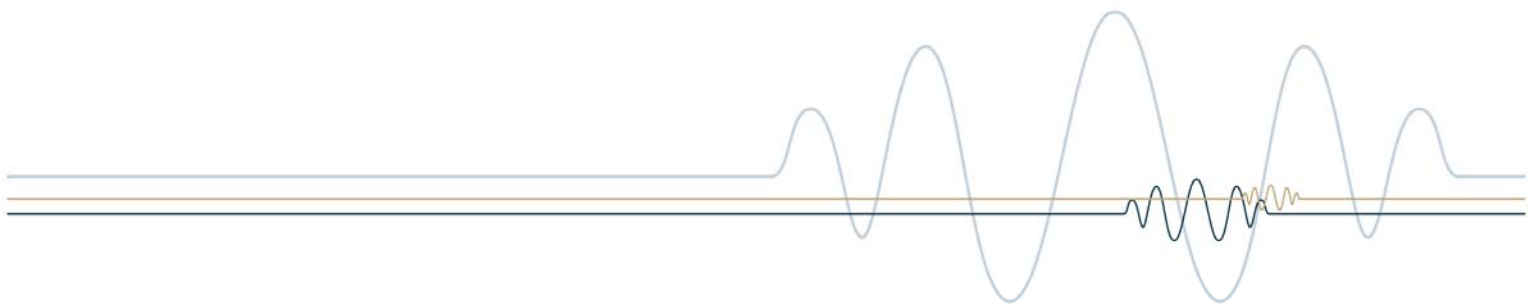


## Technical Report ::

# Ambient Noise Monitoring: Camphill Estate, Milltimber, Aberdeenshire

## Aberdeen Western Peripheral Route



**TECHNICAL REPORT NO: RK/JB/BMcK/JN 312/R1**

**Ambient Noise Monitoring:  
Camphill Estate, Milltimber, Aberdeenshire**

**Aberdeen Western Peripheral Route**

Approved by: **Dr Bernadette McKell, BSc, MSc, CEng, MIOA  
Partner**

Prepared for: **Jacobs UK Limited  
95 Bothwell Street  
Glasgow  
G2 7HX**

**5 July 2006**

**TABLE OF CONTENTS**

<b>1</b>	<b>INTRODUCTION .....</b>	<b>1</b>
<b>2</b>	<b>INSTRUMENTATION .....</b>	<b>2</b>
<b>3</b>	<b>SATELLITE LOCATIONS .....</b>	<b>3</b>
<b>4</b>	<b>PERMANENT LOCATIONS .....</b>	<b>26</b>
<b>5</b>	<b>CONCLUSIONS .....</b>	<b>44</b>

**APPENDICES**

- 1. GLOSSARY OF ACOUSTICAL TERMINOLOGY**
- 2. WIND DATA**

## 1 INTRODUCTION

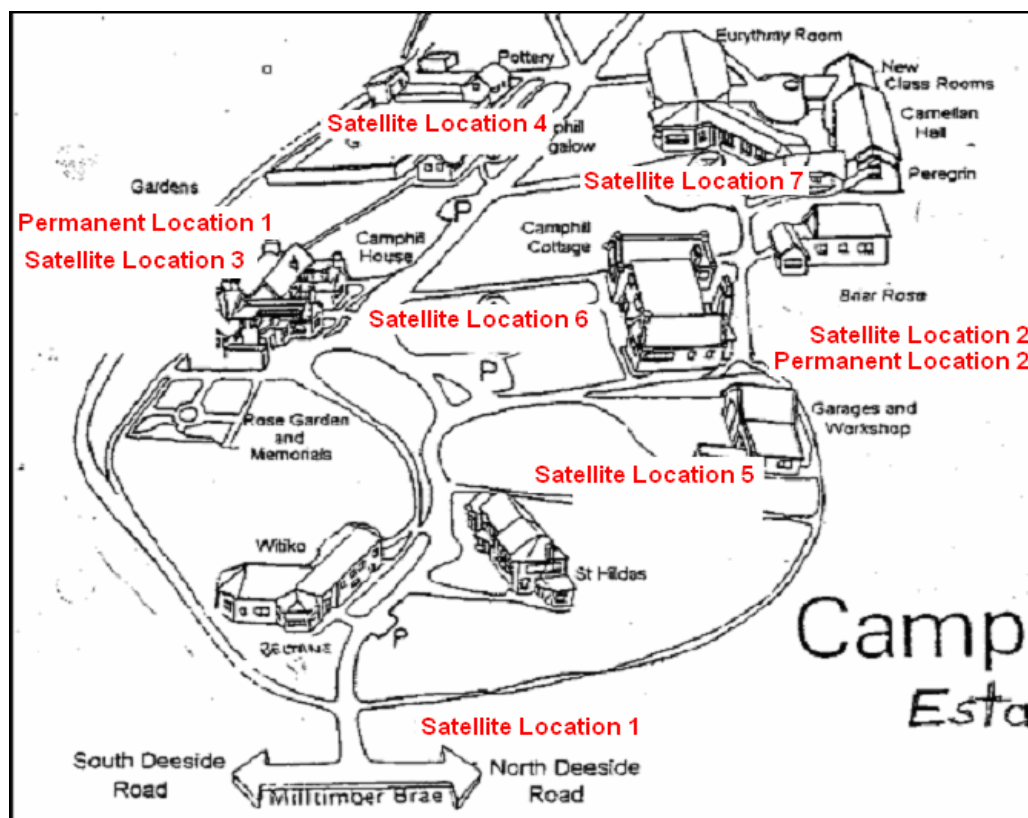
1.1. Noise monitoring has been undertaken at Camphill Estate to determine the existing ambient noise levels at various locations around the estate.

1.2. Two permanent monitoring locations and seven satellite monitoring locations were selected in agreement with Colin English, of the English Cogger Partnership. The agreed requirements for the satellite noise monitoring are outlined below:

- 30 minute measurements at each location;
- 5 minute sample periods;
- statistical data to include  $L_{Aeq}$ ,  $L_{A10}$ ,  $L_{A90}$ ,  $L_{A1}$ ;
- octave band data.

1.3. A plan showing the satellite and permanent monitoring locations is reproduced below in Figure 1.

**Figure 1: Location Map indicating Permanent and Satellite Monitoring Stations**



1.4. The noise monitoring work undertaken is detailed in the Sections that follow.

- 1.5. In addition to the two permanent noise monitoring stations, a permanent wind station was erected near to Permanent Monitor Station 1, as agreed with staff on the estate.

## **2 INSTRUMENTATION**

### **Instrumentation used for Satellite Noise Monitoring Locations**

Brüel & Kjær Sound Analyser Type 2260

Serial Number 2391258

Brüel & Kjær Microphone Type 4189

Serial Number 2470805

Brüel & Kjær Sound Level Calibrator Type 4231

Serial Number 2389067

Brüel & Kjær Sound Analysis Software BZ 7206

### **Instrumentation used for Permanent Noise Monitoring Locations**

Norsonic 118 Real Time Analyser

Serial Number 28254

Norsonic 118 Real Time Analyser

Serial Number 28116

Norsonic 1206 Preamplifier

Serial Number 30228

Norsonic 1206 Preamplifier

Serial Number 27148

Norsonic 1225 Microphone

Serial Number 29881

Norsonic 1212 Microphone Outdoor Protection Kit

Norsonic 1225 Microphone

Serial Number 18448

Norsonic 1212 Microphone Outdoor Protection Kit

### **Instrumentation used for Wind Monitoring**

Davis Pro Weather Wizard III Weather Station

Serial Number A51207A60C

### 3 SATELLITE LOCATIONS

3.1. Noise monitoring was undertaken at the following satellite locations:

- Donkey Enclosure at Eastern End of Estate (Satellite Location 1)
- North Perimeter Walk, close to Camphill Cottage (Satellite Location 2)
- Southern Perimeter Walk, below Camphill House (Satellite Location 3)
- Southern Perimeter, within the Walled Garden (Satellite Location 4)
- Sensory Garden; (Satellite Location 5)
- Play Area with Red Perimeter Fence, south of Briar Rose (Satellite Location 6)
- Area in front (south) of School Building. (Satellite Location 7).

3.2. Noise measurements were conducted in accordance with the guidance contained within BS 7445 1991 "Description and measurement of environmental noise". Part 2 "Guide to the acquisition of data pertinent to land use".

3.3. The noise monitoring equipment was calibrated at the beginning and end of each measurement period using an acoustic calibrator, which has itself been calibrated against a reference set traceable to National and International Standards. Unless otherwise stated no shift in calibration level was observed.

3.4. At each location a 30 minute measurement was undertaken before moving on to the next position. Each site was visited on four to eleven different occasions. The noise measurements have been tabulated for each location and arranged in terms of weekday and Saturday/Sunday readings and then subdivided into 'AM and PM.

3.5. Details of the measurement locations and measurement results are presented below. The spectral data has been presented from 63Hz to 8kHz, and is accurate in comparison to the measured  $L_{Aeq}$  levels to within 0.1dB. The reason for the 0.1dB margin is that the single figure  $L_{Aeq}$  values are obtained by the instrumentation using an extended frequency range of 20Hz to 20kHz.

3.6. **Satellite Location 1 – Donkey Enclosure at eastern End of Estate:** This measurement location was 2.2m from the western perimeter of the Donkey Enclosure, at the eastern edge of Camphill Estate. The sound level meter was located 1.5m above the ground in free field conditions, between the pathway and the enclosure. Milltimber Brae, visible through the trees, was approximately 40m to the east of the location and 14.5m to the north of the access road to the Estate.

**Figure 2: Satellite Location 1: Donkey Enclosure at eastern End of Estate**



3.7. The dominant noise in this location is road traffic on Milltimber Brae.

**Table 1: Satellite Location 1: Donkey Enclosure at eastern End of Estate**

Period	Start Date	Start Time (hh:mm)	Duration (hh:mm)	Noise Level (dB)				Weather		Comments
				L <sub>Aeq</sub>	L <sub>A10</sub>	L <sub>A90</sub>	L <sub>A1</sub>	Wind (Max m/s)	Conditions	
Weekday AM	25/05/06	07:07	00:30	63.4	67.1	52.1	70.1	0	Sunny Spells. Clear. Cool.	Almost constant flow of traffic on Milltimber Brae. High % HGVs. 2 passing cars on access road. Some bird song including crow squawking.

Period	Start Date	Start Time (hh:mm)	Duration (hh:mm)	Noise Level (dB)				Weather		Comments
				L <sub>Aeq</sub>	L <sub>A10</sub>	L <sub>A90</sub>	L <sub>A1</sub>	Wind (Max m/s)	Conditions	
Weekday AM	31/05/06	07:20	00:30	63.4	66.8	54.1	69.0	1.3 N	Cool. Bright. Gentle Breeze.	Almost constant flow of traffic on Milltimber Brae. High % HGVs. JCB passed on access road. Some bird song. Donkeys walked past (quietly) on path with minder. Occasional vehicle overtaking on B979.
Weekday AM	06/06/06	07:35	00:30	64.1	67.3	54.8	70.1	south < 1.5	Sunny	Almost constant flow of traffic on Milltimber Brae. High % HGVs. Occasional vehicle overtaking on B979.
Weekday PM	25/05/06	12:30	00:30	60.1	64.3	47.7	67.8	0	Cloudy. Sunny Spells.	Similar flow of traffic on Milltimber Brae as morning. 1 passing car on access road. Bird Song
Weekday PM	31/05/06	11:55	00:30	61.5	65.2	51.2	68.5	0	Clear. Sunny Spells.	Traffic on Milltimber Brae still busy but quieter than morning. 1 passing car + 1 van on access road. Bird Song inc. group of crows (briefly).
Weekday PM	05/06/06	15:34	00:34	61.5	65.3	50.2	69.5	south < 2.2	Sunny	Almost constant flow of traffic on Milltimber Brae. Bird song,
Saturday AM	03/06/06	10:00	00:30	60.3	64.2	48.4	67.7	NW < 2.4	Overcast	Almost constant flow of traffic on Milltimber Brae. Bird song including crows squawking.
Sunday AM	04/06/06	13:03	00:30	61.4	64.9	47.7	68.4	east < 2.5	Sunny	Almost constant flow of traffic on Milltimber Brae. Bird song, Emergency vehicle with siren on pass.
Saturday PM	03/06/06	15:29	00:30	60.7	64.6	48.3	67.9	N < 1.8	Overcast	Almost constant flow of traffic on Milltimber Brae. Bird song, motorcycles in field across road. Helicopter.
Sunday PM	04/06/06	18:56	00:30	60.2	64.1	46.2	68.7	east < 1.9	Sunny	Almost constant flow of traffic on Milltimber Brae. Bird song.



Table 2: Satellite Location 1: Octave Band Data

Period	Start Date	Start Time (hh:mm)	Duration (hh:mm)	L <sub>eq</sub> in Octave Bands (dB)							
				63 Hz	125 Hz	250 Hz	500 Hz	1000 Hz	2000 Hz	4000 Hz	8000 Hz
Weekday AM	25/05/06	07:07	00:30	66.5	61.1	53.1	55.0	61.5	55.3	49.0	39.0
Weekday AM	31/05/06	07:20	00:30	65.2	60.1	53.2	55.3	61.5	55.3	48.8	42.5
Weekday AM	06/06/06	07:35	00:30	66.2	60.1	54.1	56.0	62.3	55.4	50.8	38.3
Weekday PM	25/05/06	12:30	00:30	62.0	57.6	51.3	52.3	58.1	52.1	46.5	31.4
Weekday PM	31/05/06	11:55	00:30	64.8	60.0	52.7	54.1	59.5	53.6	44.6	33.6
Weekday PM	05/06/06	15:34	00:34	65.1	60.3	52.7	53.8	59.6	53.4	45.1	31.6
Saturday AM	03/06/06	10:00	00:30	60.5	55.8	49.4	51.6	58.7	51.9	43.3	30.0
Sunday AM	04/06/06	13:03	00:30	58.3	55.9	49.2	51.2	59.8	53.1	46.8	31.9
Saturday PM	03/06/06	15:29	00:30	61.7	57.5	50.9	52.5	59.0	52.5	41.6	31.4
Sunday PM	04/06/06	18:56	00:30	59.8	57.5	50.2	51.3	58.5	52.0	45.8	34.1

- 3.8. **Satellite Location 2 – North Perimeter Walk, close to Camphill Cottage:** This measurement location was between the Northern Perimeter Walk and Estate perimeter. The sound level meter was located 1.5m above the ground in free field conditions, 3.5m from the northern Estate perimeter. Milltimber Brae, just visible through the trees and across a field, was to the northeast of the location.

**Figure 3: Satellite Location 2: North Perimeter Walk, close to Camphill Cottage**



- 3.9. In the absence of wind, the dominant noise in this location is distant road traffic on both Milltimber Brae and the A93. In the presence of wind, noise from the surrounding trees, 'drowned out' the noise of distant road traffic.
- 3.10. The satellite location was near (approx. 20m) the permanent monitoring location at Camphill Cottage.

**Table 3: Satellite Location 2: North Perimeter Walk, close to Camphill Cottage**

Period	Start Date	Start Time (hh:mm)	Duration (hh:mm)	Noise Level (dB)				Weather		Comments
				L <sub>Aeq</sub>	L <sub>A10</sub>	L <sub>A90</sub>	L <sub>A1</sub>	Wind (Max m/s)	Conditions	
Weekday AM	25/05/06	07:48	00:30	48.6	50.5	45.2	55.9	1.9 W	Clear. Sunny Spells. Cool.	Road Traffic Noise from east and northwest dominates. Wheelie-Bin Lid closing (x2). Door Slam. Person sneezing within vicinity of SLM.
Weekday AM	31/05/06	08:08	00:30	51.2	53.3	47.3	58.7	1.6 N	Cool. Bright. Occasional Gentle Breeze.	Road Traffic Noise dominates from east and northwest. Bird song. Gentle breeze in trees.
Weekday AM	06/06/06	08:41	00:30	49.9	52.5	41.0	61.1	No wind	Sunny	Road traffic noise, bird song. Door slam at cottage.
Weekday PM	25/05/06	13:14	00:30	48.9	51.7	42.8	57.7	3.3 N	Cloudy. Very Light Rain Shower (Start 13:22).	Road Traffic Noise can be heard from west and northwest. Gusts of Wind at start of measurement (first 5mins). <b>Bird Song dominating noise.</b>
Weekday PM	30/05/06	20:08	00:30	50.3	53.0	45.9	57.5	3.4 NW	Cloudy. Breezy. Dry.	Road Traffic Noise can be heard from east and northwest. Moderate bird song. <b>Wind in trees dominating noise.</b>
Weekday PM	31/05/06	15:48	00:30	48.4	50.2	45.0	56.1	0	Very calm. Warm. Sunny.	Road Traffic Noise from east and northwest dominates. Plane overhead (15:49). Dog bark in vicinity (16:07). Banging nearby (16:09:41). Moderately Loud Bang (16:11). Moderately noisy wheelbarrow (passing-by area near cottage) (16:14:)
Weekday PM	05/06/06	16:42	00:30	48.2	50.7	42.7	57.5	No wind	Sunny	Bird song. Distant road traffic. Aircraft. Can hear reversing alarm from construction plant in distance to northwest (at start of measurement).

Period	Start Date	Start Time (hh:mm)	Duration (hh:mm)	Noise Level (dB)				Weather		Comments
				L <sub>Aeq</sub>	L <sub>A10</sub>	L <sub>A90</sub>	L <sub>A1</sub>	Wind (Max m/s)	Conditions	
Saturday AM	03/06/06	13:00	00:30	49.3	51.4	44.3	59.1	NW < 1.0	Overcast	Road traffic noise, bird song.
Sunday AM	04/06/06	10:40	00:30	47.6	50.3	41.6	56.8	No wind	Light rain	Road traffic noise, bird song, aircraft. Trolley of laundry rumbling past on path approx 20m away.
Sunday PM	04/06/06	15:37	00:30	50.1	53.6	42.1	61.1	east < 1.5	Sunny	Road traffic noise, bird song, aircraft.

Table 4: Satellite Location 2: Octave Band Data

Period	Start Date	Start Time (hh:mm)	Duration (hh:mm)	L <sub>eq</sub> in Octave Bands (dB)							
				63 Hz	125 Hz	250 Hz	500 Hz	1000 Hz	2000 Hz	4000 Hz	8000 Hz
Weekday AM	25/05/06	07:48	00:30	59.7	47.5	43.5	43.8	44.3	38.0	41.1	36.4
Weekday AM	31/05/06	08:08	00:30	61.0	53.3	46.8	46.0	46.9	40.2	44.2	35.3
Weekday AM	06/06/06	08:41	00:30	59.1	51.0	45.5	44.2	42.9	38.3	45.2	38.0
Weekday PM	25/05/06	13:14	00:30	57.6	50.4	44.8	44.5	45.1	40.8	37.8	31.6
Weekday PM	30/05/06	20:08	00:30	53.9	46.1	43.6	44.2	46.1	41.2	43.7	33.0
Weekday PM	31/05/06	15:48	00:30	59.9	52.8	45.5	44.2	44.3	37.6	38.7	25.8
Weekday PM	05/06/06	16:42	00:30	58.7	49.1	42.2	42.7	43.6	39.9	41.0	28.4
Saturday AM	03/06/06	13:00	00:30	55.5	46.1	40.2	41.1	43.5	41.0	44.6	30.5
Sunday AM	04/06/06	10:40	00:30	53.6	46.0	41.7	41.6	40.5	39.2	43.0	30.4
Sunday PM	04/06/06	15:37	00:30	55.8	51.7	47.4	44.6	44.0	40.4	44.8	23.8

- 3.11. **Satellite Location 3 – Southern Perimeter Walk, below Camphill House:** This measurement location was 2m from the southern perimeter walkway, below Camphill House. The sound level meter was located 1.5m above the ground in free field conditions. High vehicles on Milltimber Brae were just visible through the trees and across a field.

**Figure 4: Satellite Location 3: Southern Perimeter Walk, below Camphill House**



- 3.12. The dominant noise in this location was bird song. However road traffic noise was audible from Milltimber Brae and from traffic in the west (most likely from north Deeside Road) during all measurements.
- 3.13. This satellite location was approx. 55m south of the permanent Monitoring Location 1 (Camphill House).

**Table 5: Satellite Location 3: Southern Perimeter Walk, below Camphill House**

Period	Start Date	Start Time (hh:mm)	Duration (hh:mm)	Noise Level (dB)				Weather		Comments
				L <sub>Aeq</sub>	L <sub>A10</sub>	L <sub>A90</sub>	L <sub>A1</sub>	Wind (Max m/s)	Conditions	
Weekday AM	25/05/06	11:10	00:30	47.5	49.3	40.1	57.8	0	Sunny Spells. Dry. Calm.	Plane overhead (11:21)
Weekday AM	31/05/06	11:08	00:30	46.9	50.5	40.4	55.7	0	Very calm. Sunny Spells.	Occasional vehicle with loud exhausts can be heard in distance (unlikely to affect measurement)
Weekday AM	05/06/06	10:50	00:30	47.9	50.8	40.8	58.0	SE < 2.9	Sunny spells	Aircraft. Bird song. Distant road traffic.
Weekday PM	25/05/06	16:29	00:30	47.3	49.4	42.7	55.4	0	Sunny Spells. Dry. Calm.	Long sounding of horn in the distance (16:40). Unlikely to effect measurement).
Weekday PM	31/05/06	13:51	00:30	45.8	48.8	39.9	54.2	2.8 S	Only occasional breeze of wind. Sunny.	Tractor approaches measurement location, stops at nearside of walled garden (approx 50m) with engine running (14:10). Loud bird song (14:21). Adult passing SLM with child dragging feet loudly (14:21). Bird song overall dominant noise.
Weekday PM	31/05/06	15:13	00:30	46.8	49.1	38.5	58.1	0	Sunny. Calm.	Children talking in area (15:15-15:18). Loud bird song (15:30)
Weekday PM	05/06/06	18:53	00:30	45.8	48.6	41.1	52.9	SW < 2.8	Sunny	Bird song. Distant road traffic. Aircraft. A few bangs from Camphill House.
Saturday AM	03/06/06	12:24	00:30	48.3	51.1	39.1	59.1	NW < 1.1	Overcast	Bird song. Barely discernable road traffic. Cement mixer approx 100m away. Aircraft.
Sunday AM	04/06/06	11:15	00:30	49.0	51.8	40.0	59.3	No wind	Sunny	Bird song. Distant road traffic.
Saturday PM	03/06/06	18:20	00:16	45.3	48.4	40.0	52.6	No wind	Very fine light rain, turning heavy.	Bird song. Distant road traffic. Can also hear trail bikes in distance to south. Cut short due to heavy rain.
Sunday PM	04/06/06	16:12	00:30	49.5	52.8	40.0	60.2	SE < 2.9	Sunny	Bird song. Distant road traffic. Lots of aircraft. Can hear flute being played in Camphill House for initial 5min.

Table 6: Satellite Location 3: Octave Band Data

Period	Start Date	Start Time (hh:mm)	Duration (hh:mm)	L <sub>eq</sub> in Octave Bands (dB)							
				63 Hz	125 Hz	250 Hz	500 Hz	1000 Hz	2000 Hz	4000 Hz	8000 Hz
Weekday AM	25/05/06	11:10	00:30	53.7	49.5	46.3	44.7	39.1	40.0	39.6	31.6
Weekday AM	31/05/06	11:08	00:30	54.5	44.0	34.5	38.1	38.0	40.9	42.1	33.9
Weekday AM	05/06/06	10:50	00:30	51.7	43.0	40.7	40.6	39.3	40.0	43.5	37.0
Weekday PM	25/05/06	16:29	00:30	55.9	46.7	41.0	42.4	41.7	41.0	39.1	29.9
Weekday PM	31/05/06	13:51	00:30	54.6	48.2	35.0	36.7	37.5	40.7	39.5	30.2
Weekday PM	31/05/06	15:13	00:30	53.1	42.3	34.6	35.7	37.0	40.8	42.6	30.2
Weekday PM	05/06/06	18:53	00:30	49.4	45.1	39.8	39.8	40.7	39.1	38.3	23.5
Saturday AM	03/06/06	12:24	00:30	54.1	46.1	41.9	42.8	40.2	41.9	42.8	32.2
Sunday AM	04/06/06	11:15	00:30	47.8	37.0	27.9	33.2	38.5	43.3	44.4	40.1
Saturday PM	03/06/06	18:20	00:16	47.9	37.2	30.0	35.7	39.1	40.6	38.2	22.7
Sunday PM	04/06/06	16:12	00:30	51.2	46.1	42.0	42.4	41.1	45.5	41.5	33.6

3.14. **Satellite Location 4 – Southern Perimeter, within the Walled Garden:** This measurement location was 2m from the southern perimeter of the walled garden, situated south of the Estate. The sound level meter was located 1.5m above the ground in free field conditions (there is no wall present on the south perimeter of the walled garden). No roads were visible from this location. Unlike the other measurement locations, there were no trees within the close proximity.

**Figure 5: Satellite Location 4: Southern Perimeter, within the Walled Garden**



3.15. The dominant noise in this location was bird song. Road traffic noise was audible from traffic in the west (most likely from north Deeside road).



Table 7: Satellite Location 4: Southern Perimeter, within the walled Garden

Period	Start Date	Start Time (hh:mm)	Duration (hh:mm)	Noise Level (dB)				Weather		Comments
				L <sub>Aeq</sub>	L <sub>A10</sub>	L <sub>A90</sub>	L <sub>A10</sub>	Wind (Max m/s)	Conditions	
Weekday AM	25/05/06	10:33	00:30	49.0	52.1	40.7	59.4	0	Sunny Spells.	No activity. Noise comprised bird song and road traffic from north Deeside Road.
Weekday AM	05/06/06	10:16	00:30	47.1	50.0	40.2	57.4	SE < 3.6	Sunny spells	Bird song. Gardener shovelling earth 30m away. Aircraft.
Weekday PM	25/05/06	15:51	00:30	47.7	50.7	41.6	56.3	4 W	Occasional Breeze. Sunny Spells.	Noisy wheel barrow passes close to SLM (15:58 – <b>Omitted from measurement</b> ). Gardner walks past (16:03). Hammering in the vicinity (16:04). Sirens in distance (16:17-16:18)
Weekday PM	31/05/06	13:14	00:30	46.0	48.6	40.1	55.4	3.4 NW	Wind calm at times. Sunny.	Workmen talking quietly nearby (13:35-13:37). People talking briefly nearby (13:42).
Weekday PM	05/06/06	18:21	00:30	50.0	53.7	41.9	59.8	SW < 3.1	Sunny	Bird song. Distant road traffic, aircraft.
Saturday AM	03/06/06	11:50	00:30	46.7	49.4	40.6	56.1	NW < 2.3	Overcast	Bird song. People talking briefly nearby. Aircraft, cement mixer starts up approx 40m away during final 6mins.
Sunday AM	04/06/06	11:55	00:30	47.2	50.4	39.2	56.9	No wind	Sunny	Bird song. People talking briefly nearby, aircraft.
Saturday PM	03/06/06	17:47	00:30	49.7	54.0	40.2	58.5	east < 3.2	Very fine light rain	Bird song. Distant road traffic.
Sunday PM	04/06/06	16:45	00:30	47.7	51.6	38.6	56.9	ESE < 3.1	Sunny	Bird song. Distant road traffic, aircraft.

Table 8: Satellite Location 4: Octave Band Data

Period	Start Date	Start Time (hh:mm)	Duration (hh:mm)	L <sub>eq</sub> in Octave Bands (dB)							
				63 Hz	125 Hz	250 Hz	500 Hz	1000 Hz	2000 Hz	4000 Hz	8000 Hz
Weekday AM	25/05/06	10:33	00:30	51.2	41.2	38.1	38.9	37.4	45.5	42.1	34.9
Weekday AM	05/06/06	10:16	00:30	50.3	45.6	41.8	40.5	38.4	40.4	41.5	36.4
Weekday PM	25/05/06	15:51	00:30	53.3	47.2	39.9	40.1	40.1	41.2	42.3	35.1
Weekday PM	31/05/06	13:14	00:30	51.5	40.9	38.6	40.1	38.7	38.7	40.7	32.6
Weekday PM	05/06/06	18:21	00:30	51.4	50.3	45.7	44.5	42.6	45.4	40.1	28.1
Saturday AM	03/06/06	11:50	00:30	52.8	44.2	36.9	39.1	39.0	41.8	39.7	32.1
Sunday AM	04/06/06	11:55	00:30	49.0	41.5	39.6	36.8	36.9	43.2	40.7	32.3
Saturday PM	03/06/06	17:47	00:30	48.2	35.6	33.7	35.6	37.2	47.2	40.8	31.5
Sunday PM	04/06/06	16:45	00:30	50.6	42.7	36.9	37.6	36.7	44.6	39.8	29.2

3.16. **Satellite Location 5 – Sensory Garden:** This measurement location was in the centre of the Sensory Garden, adjacent to the central garden feature. The sound level meter was located 1.5m above the ground in free field conditions. No roads were visible from this location.

**Figure 6. Satellite Location 5: Sensory Garden**



3.17. The dominant noise in this location was road traffic noise from Milltimber Brae to the northeast.

Table 9. Satellite Location 5: Sensory Garden

Period	Start Date	Start Time (hh:mm)	Duration (hh:mm)	Noise Level (dB)				Weather		Comments
				L <sub>Aeq</sub>	L <sub>A10</sub>	L <sub>A90</sub>	L <sub>A1</sub>	Wind (Max m/s)	Conditions	
Weekday AM	25/05/06	08:24	00:30	49.4	51.9	45.8	56.1	0	Sunny Spells. Clear. Cool.	Occasional gentle noise from wind chimes. Bird song. Car passing (x2). Door slam (x2) (08:26). Car starting and leaving (08:27). Plane Overhead (08:35)
Weekday AM	31/05/06	09:07	00:30	50.8	53.2	46.8	58.3	1.2 N	Occasional gentle breeze. Sunny spells. Cool.	5 Car Passes. Car door close (x2). Van arrives/parks + door slam (09:22). Car starts and leaves (09:26). Van starts/leaves (09:23) Child shouting in the distance (09:35)
Weekday AM	06/06/06	08:09	00:30	50.0	53.4	42.2	59.5	No wind	Sunny	Bird song. Distant road traffic. Aircraft. Cars passing. Refuse lorry passing. Can hear grass cutter in distance.
Weekday PM	25/05/06	13:53	00:30	52.4	53.0	44.7	64.0	0	Sunny Spells. A light rain shower. Generally no wind.	Bird song. Gust of wind blows wind chimes (13:58:06). Van Pass (13:59:06). Light rain shower (14:15)
Weekday PM	30/05/06	19:32	00:30	50.5	52.6	46.3	57.5	0	Very light rain shower. Sunny Spells.	Bird song. Occasional gentle breeze through trees. Helicopter passing overhead (19:40-19:41). Music can be heard in the distance to the east (for approx 10mins). People walking past garden- talking and laughing moderately (19:45:13).
Weekday PM	05/06/06	16:08	00:30	48.8	52.2	41.1	59.0	No wind	Sunny	Bird song. Distant road traffic. Can hear dogs barking in distance. Cars passing.
Saturday AM	03/06/06	09:25	00:30	48.8	50.6	45.2	57.5	north < 1.8	Overcast	Bird song. Road traffic noise. Can occasionally hear wind chimes.
Sunday AM	04/06/06	09:31	00:30	48.4	52.0	38.4	58.4	No wind	Light rain	Bird song. Road traffic noise.

Period	Start Date	Start Time (hh:mm)	Duration (hh:mm)	Noise Level (dB)				Weather		Comments
				L <sub>Aeq</sub>	L <sub>A10</sub>	L <sub>A90</sub>	L <sub>A1</sub>	Wind (Max m/s)	Conditions	
Saturday PM	03/06/06	16:09	00:30	47.8	48.9	42.9	57.9	No wind	Overcast	Bird song. Road traffic noise. Convoy of motorcycles on road to north, car pass.
Sunday PM	04/06/06	18:21	00:30	46.6	49.0	40.7	56.1	east < 1.4	Sunny	Bird song. Road traffic noise.

Table 10. Satellite Location 5: Octave Band Data

Period	Start Date	Start Time (hh:mm)	Duration (hh:mm)	L <sub>eq</sub> in Octave Bands (dB)							
				63 Hz	125 Hz	250 Hz	500 Hz	1000 Hz	2000 Hz	4000 Hz	8000 Hz
Weekday AM	25/05/06	08:24	00:30	59.8	55.1	43.3	45.0	44.8	38.9	41.8	30.7
Weekday AM	31/05/06	09:07	00:30	58.5	51.0	43.2	46.3	46.6	40.8	43.1	38.2
Weekday AM	06/06/06	08:09	00:30	58.2	51.9	45.4	42.3	40.9	41.5	46.0	32.6
Weekday PM	25/05/06	13:53	00:30	58.2	49.1	42.3	45.3	45.4	48.5	42.6	29.0
Weekday PM	30/05/06	19:32	00:30	57.4	55.0	47.9	46.5	46.2	42.3	38.7	28.6
Weekday PM	05/06/06	16:08	00:30	57.6	49.0	45.9	43.2	39.8	44.2	40.2	27.3
Saturday AM	03/06/06	09:25	00:30	54.2	46.6	38.1	43.0	44.2	39.2	42.7	36.1
Sunday AM	04/06/06	09:31	00:30	48.6	41.2	31.8	33.5	35.6	41.9	45.3	28.2
Saturday PM	03/06/06	16:09	00:30	56.6	52.2	46.3	45.6	43.3	36.5	36.0	26.0
Sunday PM	04/06/06	18:21	00:30	51.9	46.2	38.0	38.3	40.7	41.6	38.6	21.7

**3.18. Satellite Location 6 – Play Area with Red Perimeter Fence, south of Briar Rose:**

This measurement location was in the centre of the play area with the red perimeter fence. The sound level meter was located 1.5m above the ground in free field conditions. No roads were visible from the location.

**Figure 7. Satellite Location 5: Play Area with Red Perimeter Fence, south of Briar Rose**



3.19. The dominant noise in this location was road traffic noise from the north (most likely from north Deeside Road).

Table 11. Satellite Location 6: Play Area with Red Perimeter Fence, south of Briar Rose

Period	Start Date	Start Time (hh:mm)	Duration (hh:mm)	Noise Level (dB)				Weather		Comments
				L <sub>Aeq</sub>	L <sub>A10</sub>	L <sub>A90</sub>	L <sub>A1</sub>	Wind (Max m/s)	Conditions	
Weekday AM	25/5/06	09:06	00:30	48.4	51.1	44.6	55.4	2.3 N	Clear. Sunny Spells. Cool.	Car passing (09:11). Van arriving (09:14). Van Leaving (09:16). Van Passing (09:17). Van Passing (09:18) Van Passing (09:25) Car passing (09:33)
Weekday AM	31/05/06	09:46	00:30	49.7	52.2	46.5	54.7	north < 2.0	Sunny spells. Cool.	Child singing in the area (distant). Singing child passes area (09:49). Slight increase in wind (10:13).
Weekday AM	05/06/06	09:08	00:30	49.1	52.6	41.9	56.1	No wind	Sunny spells	Tractor pass, minibus arrives and collects children from Camphill House – doors open / close, etc. Vehicles passing. Kids playing in park.
Weekday PM	25/05/06	14:36	00:30	47.2	49.5	44.4	52.9	3.1 W	Sunny Spells	Compressor in operation in distance. Van arrives (15:00). Door slam (15:01). Boy passing area with wheel barrow (15:03). Car passing (15:05)
Weekday PM	30/05/06	18:39	00:30	50.2	52.3	46.3	55.9	4 NE	Cloudy. Breezy.	Bird song. Noise from wind in nearby trees. Child talking nearby (18:43) and (18:53). Door slam (18:54). Child screaming (18:55) Gate closing (19:04). Child shouting (19:11)
Weekday PM	05/06/06	17:14	00:30	47.8	51.0	42.9	55.8	SW < 3.1	Sunny	Bird song & distant road traffic noise. Aircraft, cars passing.
Saturday AM	03/06/06	10:37	00:30	47.7	50.0	44.3	54.4	No wind	Overcast	Bird song & distant road traffic noise. Aircraft, van pass.
Sunday AM	04/06/06	10:03	00:30	48.0	50.9	41.1	55.3	No wind	Light rain	Bird song. Road traffic noise.
Saturday PM	03/06/06	16:42	00:30	46.0	48.4	42.7	51.4	north < 1.3	Overcast	Bird song & distant road traffic noise. Car pass.
Sunday PM	04/06/06	17:50	00:30	48.0	49.0	40.4	60.3	east < 1.2	Sunny	Bird song, distant road traffic, cars passing, aircraft. People talking, vehicles starting / leaving / arriving, doors slamming.

**Table 12. Satellite Location 6: Octave Band Data**

Period	Start Date	Start Time (hh:mm)	Duration (hh:mm)	L <sub>eq</sub> in Octave Bands (dB)							
				63 Hz	125 Hz	250 Hz	500 Hz	1000 Hz	2000 Hz	4000 Hz	8000 Hz
Weekday AM	25/5/06	09:06	00:30	58.5	49.0	41.7	43.0	43.5	39.4	41.8	33.4
Weekday AM	31/05/06	09:46	00:30	58.3	49.8	42.7	45.5	45.3	40.9	41.8	30.3
Weekday AM	05/06/06	09:08	00:30	56.1	51.2	44.1	41.1	40.6	40.3	45.1	33.1
Weekday PM	25/05/06	14:36	00:30	57.8	52.1	40.9	40.7	41.6	41.1	38.2	25.7
Weekday PM	30/05/06	18:39	00:30	56.6	49.7	43.0	45.2	46.5	42.2	40.6	33.7
Weekday PM	05/06/06	17:14	00:30	56.0	50.0	43.9	41.3	41.1	41.2	41.2	26.5
Saturday AM	03/06/06	10:37	00:30	56.5	46.7	38.7	41.3	42.9	39.4	41.4	30.0
Sunday AM	04/06/06	10:03	00:30	52.4	48.4	41.6	40.2	39.1	40.6	43.9	31.2
Saturday PM	03/06/06	16:42	00:30	52.8	49.1	37.1	39.4	41.5	38.8	37.9	24.2
Sunday PM	04/06/06	17:50	00:30	55.7	50.4	48.9	44.7	42.7	38.6	38.1	23.7



3.20. **Satellite Location 7 – Area in front (south) of School Building:** This measurement location was in the centre of the paved area, 7m from the school building. The sound level meter was located 1.5m above the ground in free field conditions. No roads were visible from this location.

**Figure 8. Satellite Location 7: Area in front (south) of School Building**



3.21. The dominant noise in this location was road traffic noise from the northeast (most likely from Milltimber Brae) during quiet periods. There is greater activity at this measurement location compared with others, with people and vehicles arriving and leaving.

Table 13. Satellite Location 7: Area in front (south) of School Building

Period	Start Date	Start Time (hh:mm)	Duration (hh:mm)	Noise Level (dB)				Weather		Comments
				L <sub>Aeq</sub>	L <sub>A10</sub>	L <sub>A90</sub>	L <sub>A1</sub>	Wind (Max m/s)	Conditions	
Weekday AM	25/05/06	09:54	00:30	50.6	52.3	41.7	62.6	2.5 E	Clear. Sunny Spells. Cool.	Lots of activity – people talking, vehicles starting /leaving/arriving, doors slamming. Road traffic noise can be heard in quiet periods.
Weekday AM	31/05/06	10:28	00:30	48.6	50.2	44.0	57.6	1.5 E	Sunny spells. Cool.	Van arrives + door slam. Child talks nearby briefly. Child knocks on window. Worker talking quietly nearby. Door slam (x2). Group of workers arrive and exit car. Talking briefly.
Weekday AM	05/06/06	09:40	00:30	50.9	53.4	41.9	61.7	No wind	Cloudy	Wheelee bins trundling along ground. Aircraft. Workmen unloading van (approx 30m away). Cars passing. People in and out of school – doors open / close, etc.
Weekday PM	25/05/06	15:10	00:30	51.0	55.4	44.3	58.8	1.5 SW	Sunny Spells. One strong gust of wind.	1 <sup>st</sup> 15mins: little activity – 1 car pass. 2 <sup>nd</sup> 15mins: car pass (x2). Van arrives, people leave van, talking moderately.
Weekday PM	31/05/06	12:38	00:28	48.1	50.0	42.7	57.0	2.6 NE	Sunny spells. Warm.	Child sings into meter ( <b>omitted from measurement</b> ). Lawnmower can be heard in the distance. Dominant source – wind in nearby trees. Lots of activity – people talking, vehicles starting/leaving/ arriving, doors slamming.
Weekday PM	05/06/06	17:46	00:30	51.2	53.1	42.1	63.5	No wind	Sunny	Bird song, distant road traffic, cars passing, aircraft, children shouting in distance.

Period	Start Date	Start Time (hh:mm)	Duration (hh:mm)	Noise Level (dB)				Weather		Comments
				L <sub>Aeq</sub>	L <sub>A10</sub>	L <sub>A90</sub>	L <sub>A1</sub>	Wind (Max m/s)	Conditions	
Saturday AM	03/06/06	11:15	00:30	47.8	50.1	43.1	56.8	east < 3.2	Overcast	Bird song, distant road traffic, cars passing, aircraft, group of people talking 30-40m away.
Sunday AM	04/06/06	12:28	00:30	47.8	50.7	40.0	58.4	No wind	Sunny	Bird song, distant road traffic, aircraft, people talking nearby.
Saturday PM	03/06/06	17:14	00:30	46.1	49.2	40.3	54.6	No Wind	Overcast	Bird song, distant road traffic, cars passing, aircraft. People talking, vehicles starting/ leaving/arriving, doors slamming.
Sunday PM	04/06/06	17:17	00:30	46.0	49.1	39.0	55.8	No wind	Sunny	Bird song, distant road traffic, cars passing, aircraft. People talking, going in and out of school building – doors slamming.

Table 14. Satellite Location 7: Octave Band Data

Period	Start Date	Start Time (hh:mm)	Duration (hh:mm)	L <sub>eq</sub> in Octave Bands (dB)							
				63 Hz	125 Hz	250 Hz	500 Hz	1000 Hz	2000 Hz	4000 Hz	8000 Hz
Weekday AM	25/05/06	09:54	00:30	59.5	49.1	45.0	46.0	45.2	45.1	39.6	32.8
Weekday AM	31/05/06	10:28	00:30	57.7	50.0	43.8	44.3	43.6	40.9	40.2	31.3
Weekday AM	05/06/06	09:40	00:30	56.5	49.5	47.7	42.7	40.9	46.8	43.2	35.6
Weekday PM	25/05/06	15:10	00:30	61.9	50.8	45.8	46.0	46.5	44.0	41.3	34.2
Weekday PM	31/05/06	12:38	00:28	58.4	51.6	44.0	44.1	43.1	40.6	37.5	29.1
Weekday PM	05/06/06	17:46	00:30	52.6	47.4	43.7	41.2	41.1	48.3	41.6	33.9
Saturday AM	03/06/06	11:15	00:30	56.3	48.6	42.7	42.3	42.1	41.5	39.7	31.3
Sunday AM	04/06/06	12:28	00:30	50.4	45.2	42.8	40.8	40.5	41.1	42.5	31.3
Saturday PM	03/06/06	17:14	00:30	52.0	48.2	40.7	37.7	38.8	41.1	39.0	23.3
Sunday PM	04/06/06	17:17	00:30	48.6	43.5	39.9	38.8	38.8	39.3	40.5	32.1

## 4 PERMANENT LOCATIONS

- 4.1. Noise monitoring was undertaken at the following permanent locations:
- Camphill House (Permanent Location 1)
  - Camphill Cottage (Permanent Location 2).
- 4.2. In addition to the permanent noise monitors, a permanent wind station was erected nearby the noise monitoring station at Camphill Cottage. This location was agreed with Camphill Estate staff on-site.
- 4.3. Noise measurements were conducted in accordance with the guidance contained within BS 7445 1991 "Description and measurement of environmental noise" Part 2 "Guide to the acquisition of data pertinent to land use".
- 4.4. The noise monitoring equipment was calibrated periodically during the measurement period using an acoustic calibrator, which has itself been calibrated against a reference set traceable to National and International Standards.
- 4.5. The noise measurements have been tabulated for each location and arranged in terms of weekday or weekend and subdivided into 'Day' (07.00 to 19.00 hours), 'Evening' (19.00 to 23.00 hours), and 'Night' (23.00 to 07.00 hours) periods. The wind data, where available, has also been averaged over the same periods, i.e. day, evening and night.
- 4.6. Details of the measurement locations and measurement results are presented below.
- 4.7. **Permanent Location 1 – Camphill House:** This measurement location was in front of the south facing façade of Camphill House on the 1<sup>st</sup> Floor. The microphone was positioned 1m from the façade.

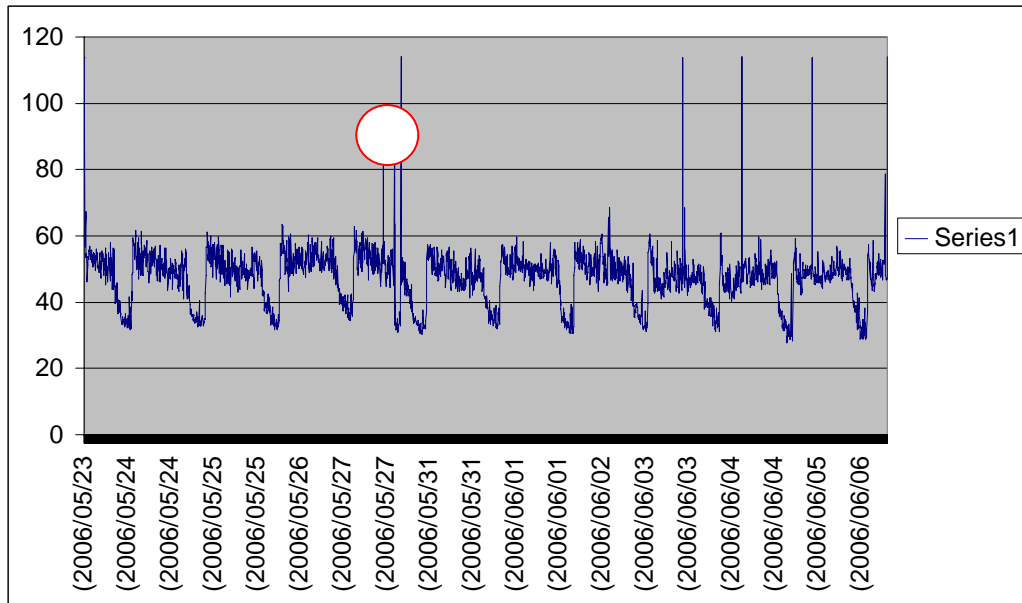
**Figure 9. Permanent Location 1: Camphill House**



- 4.8. The microphone for this monitoring station provided an initial calibration value of 113.8dB, and the sound level meter started recording noise data at 12.08 on Tuesday 23 May 2006. The station was, as agreed, unsupervised until the following Tuesday 30 May. At this time, it was noted that the meter had stopped recording at 18:49 on Saturday 27 May as a consequence of the memory being full. Upon calibration, it was revealed that there was a significant calibration shift (105 – 106dB).
- 4.9. It should be noted that there was severe weather (wind and hail) on Wednesday 24 May 2006. There was evidence of water leakage on the microphone cable at the bottom of the all weather cylindrical housing, however no water was observed to be on the microphone or pre-amp. The microphone and pre-amplifier were replaced with the microphone and pre-amplifier from Station 2, and calibrated satisfactorily at a level of 114dB. The meter started recording again at 19.09 on Tuesday 30 May 2006.
- 4.10. A further calibration (113.8dB) was undertaken at 14.08 on Saturday 3 June 2006. The meter was then calibrated daily until Tuesday 6 June. The meter calibrated satisfactorily each time.
- 4.11. The chart below plots the measured  $L_{Aeq,5min}$  against time (date). It can be seen that there are two anomalies on Saturday 27 May (the second and third spikes from the left

– note that the first spike is the initial calibration at the extreme left, and the fourth and subsequent spikes are further calibrations). The dips represent the quietest period at night time (22.00/23.00 – 03.00/04.00).

**Chart 1. Permanent Location 1: Camphill House**



4.12. The two anomalies, as described above, provide values of  $L_{Aeq,5min}$  86.5dB, and  $L_{Aeq,5min}$  96.4dB, at 13.09 and 16.44, respectively, both on the 27 May. The meter indicated an overload (a reading of above 140dB) during both of these 5 minute periods. It could have been at this point that the microphone lost its calibration.

4.13. Table 8 below presents the calculated day, evening and night-time noise levels. The discrepancies described in the above paragraph have been excluded. Table 8b shows the data excluding the days where the data are questionable due to calibration shifts.

**Table 15. Permanent Monitor Location 1: Camphill House**

Period	Start Date	Start Time (hh:mm)	Duration (hh:mm)	Noise Level (dB)				Wind		Comments
				L <sub>Aeq</sub>	L <sub>A10</sub>	L <sub>A90</sub>	L <sub>Amax</sub>	Speed (m/s)	Direction	
Weekday Day	23/05/06	12:08	06:52	54.9	55.9	47.6	77.3			23 – 27 May: Calibration discrepancy.
Weekday Day	24/05/06	07:00	12:00	52.1	54.5	43.6	75.9			23 – 27 May: Calibration discrepancy.
Weekday Day	25/05/06	07:00	12:00	51.1	53.1	42.0	81.0			23 – 27 May: Calibration discrepancy.
Weekday Day	26/05/06	07:00	12:00	54.1	56.2	46.9	77.5			23 – 27 May: Calibration discrepancy.
Weekday Day	31/05/06	07:00	12:00	50.2	51.8	41.0	76.0	0.3	NNW	Calibration ok.
Weekday Day	01/06/06	07:00	12:00	51.2	53.2	43.9	78.2	0.1	SSW	Calibration ok.
Weekday Day	02/06/06	07:00	12:00	54.4	54.5	43.9	79.4	0.1	SSW	Calibration ok.
Weekday Day	05/06/06	07:00	12:00	49.5	51.1	44.7	86.7	0.0	-	Calibration ok.
Weekday Day	<b>Average</b>			<b>52.6</b>	<b>53.8</b>	<b>44.2</b>	<b>79.0</b>			
Weekend Day	27/05/06	07:00	12:00	53.0	52.9	40.0	78.2			23 – 27 May: Calibration discrepancy. 2 abnormal noise peaks during day.
Weekend Day	03/06/06	07:00	12:00	51.8	50.6	40.4	87.0	0.4	NNE	Calibration ok.
Weekend Day	04/06/06	07:00	12:00	49.6	51.2	41.0	88.4	0.1	NE	Calibration ok.
Weekend Day	<b>Average</b>			<b>50.5</b>	<b>51.0</b>	<b>40.5</b>	<b>84.5</b>			
Weekday Evening	23/05/06	19:00	04:00	51.5	51.8	40.4	74.5			23 – 27 May: Calibration discrepancy.



Period	Start Date	Start Time (hh:mm)	Duration (hh:mm)	Noise Level (dB)				Wind		Comments
				L <sub>Aeq</sub>	L <sub>A10</sub>	L <sub>A90</sub>	L <sub>Amax</sub>	Speed (m/s)	Direction	
Weekday Evening	24/05/06	19:00	04:00	49.6	49.4	38.8	70.3			23 – 27 May: Calibration discrepancy.
Weekday Evening	25/05/06	19:00	04:00	50.4	51.8	39.0	74.8			23 <sup>f</sup> – 27 May: Calibration discrepancy.
Weekday Evening	26/05/06	19:00	04:00	53.4	53.6	42.1	76.8			23 – 27 May: Calibration discrepancy.
Weekday Evening	30/05/06	19:00	04:00	46.2	46.4	38.9	72.3	0.1	NNW	Calibration ok.
Weekday Evening	31/05/06	19:00	04:00	48.7	49.8	39.7	78.2	0	NE	Calibration ok.
Weekday Evening	01/06/06	19:00	04:00	51.1	52.1	41.7	80.5	0	NE	Calibration ok.
Weekday Evening	02/06/06	19:00	04:00	48.3	49.0	39.3	76.7	0.3	SSW	Calibration ok.
Weekday Evening	05/06/06	19:00	04:00	48.6	50.5	41.1	73.2	0.0	-	Calibration ok.
Weekday Evening	Average			50.2	50.5	40.1	75.3			
Weekend Evening	03/06/06	19:00	04:00	47.1	48.4	39.3	69.2	0.0	-	Calibration ok.
Weekend Evening	04/06/06	19:00	04:00	49.4	50.2	39.0	74.6	0.0	-	Calibration ok.
Weekend Evening	Average			48.4	49.3	39.2	71.9			
Weekday Night	23/05/06	23:00	08:00	52.3	46.0	36.7	90.2			23 – 27 May: Calibration discrepancy.
Weekday Night	24/05/06	23:00	08:00	52.1	46.6	36.5	74.5			23 – 27 May: Calibration discrepancy.
Weekday Night	25/05/06	23:00	08:00	53.0	47.3	36.7	74.5			23 – 27 May: Calibration discrepancy.

Period	Start Date	Start Time (hh:mm)	Duration (hh:mm)	Noise Level (dB)				Wind		Comments
				L <sub>Aeq</sub>	L <sub>A10</sub>	L <sub>A90</sub>	L <sub>Amax</sub>	Speed (m/s)	Direction	
Weekday Night	26/05/06	23:00	08:00	53.7	50.0	38.6	77.7	/	/	23 – 27 May: Calibration discrepancy.
Weekday Night	30/05/06	23:00	08:00	50.7	45.5	35.3	70.4	0.6	SSW	Calibration ok.
Weekday Night	31/05/06	23:00	08:00	49.5	46.0	36.5	70.2	0	WSW	Calibration ok.
Weekday Night	01/06/06	23:00	08:00	50.5	45.9	36.0	71.1	0.1	SSW	Calibration ok.
Weekday Night	04/06/06	23:00	08:00	48.0	43.5	34.4	74.3	0.0	-	Calibration ok.
Weekday Night	05/06/06	23:00	08:00	48.6	43.8	35.5	81.8	0.0	-	Calibration ok.
Weekday Night	Average			51.3	46.1	36.2	76.1	/		
Weekend Night	02/06/06	23:00	08:00	50.4	45.3	36.4	84.7	1.0	SSW	Calibration ok.
Weekend Night	03/06/06	23:00	08:00	47.9	44.7	35.7	75.6	0.0	-	Calibration ok.
Weekend Night	Average			49.3	45.0	36.1	80.2	/		

Table 16. Permanent Monitor Location 1: Camphill House (Octave Band Data)

Period	Start Date	Start Time (hh:mm)	Duration (hh:mm)	L <sub>eq</sub> in Octave Bands (dB)							
				63 Hz	125 Hz	250 Hz	500 Hz	1000 Hz	2000 Hz	4000 Hz	8000 Hz
Weekday Day	31/05/06	07:00	12:00	54.5	48.2	41.0	40.2	39.5	42.4	45.6	43.6
Weekday Day	01/06/06	07:00	12:00	54.3	48.5	44.7	42.9	42.5	43.4	46.0	43.7

Period	Start Date	Start Time (hh:mm)	Duration (hh:mm)	L <sub>eq</sub> in Octave Bands (dB)							
				63 Hz	125 Hz	250 Hz	500 Hz	1000 Hz	2000 Hz	4000 Hz	8000 Hz
Weekday Day	02/06/06	07:00	12:00	58.1	52.5	50.3	47.4	48.7	47.6	46.6	43.7
Weekday Day	05/06/06	07:00	12:00	51.5	47.2	45.4	44.2	43.6	43.0	41.9	36.2
Weekday Day	Average			55.2	49.6	46.6	44.4	44.9	44.7	45.4	42.7
Weekend Day	03/06/06	07:00	12:00	49.6	43.4	41.1	48.3	45.2	44.2	42.8	34.6
Weekend Day	04/06/06	07:00	12:00	48.8	44.0	42.1	41.4	43.1	43.3	43.5	37.5
Weekend Day	Average			49.2	43.7	41.6	46.1	44.3	43.8	43.2	36.3
Weekday Evening	30/05/06	19:00	04:00	49.2	46.6	41.8	40.5	38.7	40.4	38.7	34.3
Weekday Evening	31/05/06	19:00	04:00	45.5	44.0	41.3	42.5	41.0	43.3	41.6	36.5
Weekday Evening	01/06/06	19:00	04:00	50.8	48.1	45.4	44.4	41.1	45.2	45.7	39.0
Weekday Evening	02/06/06	19:00	04:00	46.8	41.2	38.6	38.3	37.9	42.7	43.1	39.1
Weekday Evening	05/06/06	19:00	04:00	47.0	46.5	44.1	41.1	41.2	43.3	41.8	35.3
Weekday Evening	Average			48.3	45.9	42.8	41.8	40.2	43.2	42.8	37.3
Weekend Evening	03/06/06	19:00	04:00	42.8	38.3	38.1	37.3	38.3	43.0	39.8	33.7
Weekend Evening	04/06/06	19:00	04:00	44.8	41.1	40.5	38.5	39.5	45.8	41.8	34.5
Weekend Evening	Average			43.9	39.9	39.5	37.9	39.0	44.6	40.9	34.1

Period	Start Date	Start Time (hh:mm)	Duration (hh:mm)	L <sub>eq</sub> in Octave Bands (dB)							
				63 Hz	125 Hz	250 Hz	500 Hz	1000 Hz	2000 Hz	4000 Hz	8000 Hz
Weekday Night	30/05/06	23:00	08:00	41.7	38.2	32.3	33.0	33.1	39.5	47.6	45.5
Weekday Night	31/05/06	23:00	08:00	40.6	34.3	34.3	34.1	34.0	38.9	46.4	44.0
Weekday Night	01/06/06	23:00	08:00	42.0	38.5	34.5	34.5	33.5	42.0	47.0	44.6
Weekday Night	04/06/06	23:00	08:00	40.1	35.2	34.3	35.0	35.1	42.4	43.1	40.2
Weekday Night	05/06/06	23:00	08:00	43.3	40.0	39.6	38.5	38.9	43.6	42.9	38.2
Weekday Night	Average			41.7	37.7	35.8	35.5	35.5	41.6	45.8	43.3
Weekend Night	02/06/06	23:00	08:00	42.9	37.8	37.5	36.4	37.0	44.9	45.8	41.8
Weekend Night	03/06/06	23:00	08:00	40.2	34.6	34.0	34.4	34.3	43.8	42.3	37.2
Weekend Night	Average			41.8	36.5	36.1	35.5	35.9	44.4	44.4	40.1

4.14. **Permanent Location 2 – Camphill Cottage:** This measurement location was on the roof of a small porch on the north facing façade of Camphill Cottage at the 1<sup>st</sup> floor level. The microphone was positioned 1m from the façade.

**Figure 10. Permanent Location 2: Camphill Cottage**



- 4.15. The microphone for this monitoring station provided an initial calibration value of 113.8dB, and the sound level meter started recording noise data at 14.39 on Tuesday 23 May 2006. The station was, as agreed, unsupervised until the following Tuesday 30 May. At this time, it was noted that the meter had stopped recording data after two 5 minute repeat measurements, for reasons unknown. The microphone was still in calibration and was swapped with Station 1 while the batteries for this station were charged overnight.
- 4.16. The microphone and pre-amplifier from Station 1 was left inside overnight which improved the calibration signal to around 112dB. After inspecting the microphone diaphragm it was observed that there was a build up of dusty residue on the diaphragm, note that this was the microphone with evidence of water ingress. This was carefully removed and resulted in a satisfactory calibration. The meter started recording again at 08.56 on Wednesday 31 May 2006.
- 4.17. The monitoring station was left, as agreed, unsupervised until Saturday 3 June 2006. Upon return, it was observed that a half eaten apple had been impaled on the bird spike at the top of the all weather microphone housing, and, the LCD screen on the sound level meter, stored inside the heavy duty padlocked case, was detached from the meter housing (see Figures below).

Figure 11. Permanent Location 2: Apple Impaled on Bird Spike



Figure 12. Permanent Location 2: Apple Impaled on Bird Spike



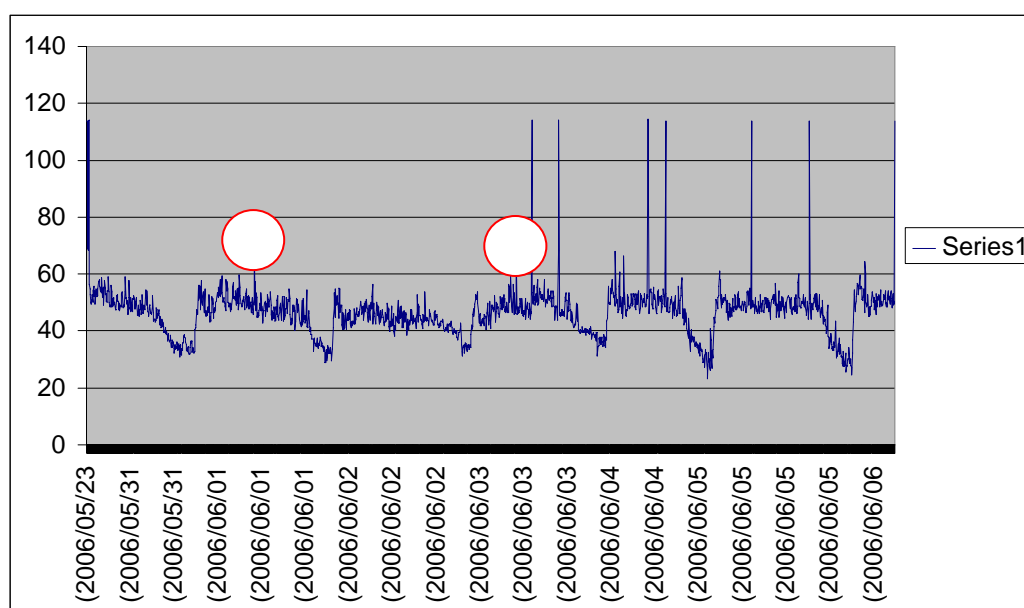
Figure 13: Permanent Location 2. LCD Screen Damage



4.18. Once again recalibration revealed a significant shift. The microphone did later calibrate satisfactorily, and was then calibrated twice daily until Tuesday 6 June. The meter calibrated satisfactorily each time.

4.19. The chart below plots the measured  $L_{Aeq,5min}$  against time. It can be seen that there are two anomalies; one at 13.33 on Thursday 1 June ( $L_{Aeq,5min}$  71.8dB), and one at 11.00 on Saturday 3 June ( $L_{Aeq,5min}$  69.8dB). This second anomaly is the result of the site operator removing the apple from the bird spike. It is therefore reasonable to assume that the first anomaly is the result of the apple being placed on the spike.

**Chart 2. Permanent Location 2: Camphill Cottage**



**Table 17. Permanent Monitor Location 2: Camphill Cottage**

Period	Start Date	Start Time (hh:mm)	Duration (hh:mm)	Noise Level (dB)				Wind		Comments
				$L_{Aeq}$	$L_{A10}$	$L_{A90}$	$L_{A1}$	Speed (m/s)	Direction	
Weekday Day	31/05/06	08:56	10:04	52.4	53.4	45.4	85.4	0.3	NNW	31 May – 3 June: Calibration discrepancy.
Weekday Day	01/06/06	07:00	12:00	53.8	52.6	42.9	94.3	0.1	SSW	31 May – 3 June: Calibration discrepancy.
Weekday Day	02/06/06	07:00	12:00	46.4	48.5	38.9	73.9	0.1	SSW	31 May – 3 June: Calibration discrepancy.
Weekday Day	05/06/06	07:00	12:00	50.4	52.6	43.0	76.6	0.0	-	Calibration ok.



Period	Start Date	Start Time (hh:mm)	Duration (hh:mm)	Noise Level (dB)				Wind		Comments
				L <sub>Aeq</sub>	L <sub>A10</sub>	L <sub>A90</sub>	L <sub>A1</sub>	Speed (m/s)	Direction	
<b>Weekday Day</b>	<b>Average</b>			<b>51.5</b>	<b>51.8</b>	<b>42.6</b>	<b>82.6</b>			
<b>Weekend Day</b>	03/06/06	07:00	12:00	52.9	52.1	43.8	102.0	0.4	NNW	31 May – 3 June: Calibration discrepancy.
<b>Weekend Day</b>	04/06/06	07:00	12:00	51.3	53.8	42.8	77.7	0.1	NE	Calibration ok.
<b>Weekend Day</b>	<b>Average</b>			<b>50.9</b>	<b>51.5</b>	<b>43.4</b>	<b>89.9</b>			
<b>Weekday Evening</b>	31/05/06	19:00	04:00	44.9	45.4	38.8	68.2	0	NE	31 May – 3 June: Calibration discrepancy.
<b>Weekday Evening</b>	01/06/06	19:00	04:00	48.0	48.2	39.2	85.9	0	NE	31 May – 3 June: Calibration discrepancy.
<b>Weekday Evening</b>	02/06/06	19:00	04:00	44.4	45.9	39.2	65.6	0.3	SSW	31 May – 3 June: Calibration discrepancy.
<b>Weekday Evening</b>	05/06/06	19:00	04:00	48.3	49.7	40.7	73.9	0.0	-	Calibration ok.
<b>Weekday Evening</b>	<b>Average</b>			<b>46.7</b>	<b>47.3</b>	<b>39.5</b>	<b>73.4</b>			
<b>Weekend Evening</b>	03/06/06	19:00	04:00	47.1	47.9	39.5	72.0	0.0	-	Calibration ok.
<b>Weekend Evening</b>	04/06/06	19:00	04:00	49.9	49.4	39.5	88.9	0.0	-	Calibration ok.
<b>Weekend Evening</b>	<b>Average</b>			<b>48.7</b>	<b>48.7</b>	<b>39.5</b>	<b>80.5</b>			
<b>Weekday Night</b>	31/05/06	23:00	08:00	47.3	43.9	34.7	76.6	0	WSW	31 May – 3 June: Calibration discrepancy.
<b>Weekday Night</b>	01/06/06	23:00	08:00	45.1	43.2	33.2	76.9	0.1	SSW	31 May – 3 June: Calibration discrepancy.
<b>Weekday Night</b>	04/06/06	23:00	08:00	48.6	44.8	32.1	73.0	0.0	-	Calibration ok.

Period	Start Date	Start Time (hh:mm)	Duration (hh:mm)	Noise Level (dB)				Wind		Comments
				L <sub>Aeq</sub>	L <sub>A10</sub>	L <sub>A90</sub>	L <sub>A1</sub>	Speed (m/s)	Direction	
Weekday Night	05/06/06	23:00	08:00	50.9	45.2	32.7	77.5	0.0	-	Calibration ok.
Weekday Night	Average			48.5	44.3	33.2	76.0			
Weekend Night	02/06/06	23:00	08:00	44.8	45.0	34.4	67.3	1.0	SSW	31 May – 3 June: Calibration discrepancy.
Weekend Night	03/06/06	23:00	08:00	52.8	47.6	35.6	94.8	0	-	Calibration ok.
Weekend Night	Average			50.4	46.3	35.0	81.1			

Table 18. Permanent Monitor Location 2: Camphill Cottage (Octave Band Data)

Period	Start Date	Start Time (hh:mm)	Duration (hh:mm)	L <sub>eq</sub> in Octave Bands (dB)							
				63 Hz	125 Hz	250 Hz	500 Hz	1000 Hz	2000 Hz	4000 Hz	8000 Hz
Weekday Day	05/06/06	07:00	12:00	55.3	48.7	45.7	43.0	41.6	39.2	46.9	38.4
Weekend Day	04/06/06	07:00	12:00	51.2	45.3	42.4	41.5	42.3	39.6	48.5	39.3
Weekday Evening	05/06/06	19:00	04:00	50.5	48.0	44.3	41.3	40.3	39.5	44.2	34.6
Weekend Evening	03/06/06	19:00	04:00	48.1	42.6	38.6	38.1	39.1	38.2	43.4	34.6
Weekend Evening	04/06/06	19:00	04:00	50.0	46.5	43.2	40.5	41.5	42.3	45.0	42.1
Weekend Evening	Average			49.2	45.0	41.5	39.5	40.4	40.7	44.3	39.8
Weekday Night	04/06/06	23:00	08:00	44.1	38.9	36.5	34.6	34.5	36.8	46.0	41.6

Period	Start Date	Start Time (hh:mm)	Duration (hh:mm)	L <sub>eq</sub> in Octave Bands (dB)							
				63 Hz	125 Hz	250 Hz	500 Hz	1000 Hz	2000 Hz	4000 Hz	8000 Hz
Weekday Night	05/06/06	23:00	08:00	47.1	40.7	37.6	34.8	34.2	37.0	48.5	44.6
Weekday Night	Average			45.9	39.9	37.1	34.7	34.4	36.9	47.4	43.4
Weekend Night	03/06/06	23:00	08:00	43.7	38.5	34.4	34.2	36.8	41.0	50.8	42.9

4.20. **Weather Station:** The weather station started recording data at 15.30 on 23 May 2006. It was left unsupervised until Tuesday 30 May.

Figure 14. Weather Station



4.21. On Tuesday 30 May, it was discovered that the weather station had stopped sending data to the data logger at 18.00 on Tuesday 23 May, the day it was set up. A short investigation found that all of the cables on the weather machine had been removed from their connections, but kept in place such that the cables would appear to be connected. All of the connectors are held in place by a clip when connected, which is a safeguard against the cables being accidentally pulled out. Also, to gain access to the cables, the front fascia to the machine must be removed. This is very stiff and difficult to remove. The Figures below show how the cables were found (removed) and also shows the cables connected.

Figure 15. Cables removed but kept in position



Figure16. Cables re-connected



- 4.22. The cables were reconnected on Tuesday 30 May and the weather station operated correctly and captured data until Tuesday 6 June.
- 4.23. The recorded data are included as Appendix 2 to this document. There is no direct correlation between wind speed and noise level.

## 5 CONCLUSIONS

- 5.1 Noise monitoring has been undertaken at Camphill Estate to determine the existing ambient noise levels at various locations around the estate.
- 5.2 Two permanent monitoring locations and five satellite monitoring locations were selected in agreement with Colin English, of the English Cogger Partnership who is advising the Camphill Community.
- 5.3 The agreed requirements are stated in the in Section 1.2 of this report. All of the data with exception of the wind data are supplied within the text of this report. The wind data are contained within Appendix 2.

## APPENDIX 1

### GLOSSARY OF ACOUSTICAL TERMINOLOGY

<b>Ambient noise</b>	Totally encompassing sound in a given situation at a given time usually composed of sound from many sources near and far.
<b>"A" Weighting (dB(A))</b>	The human ear does not respond uniformly to different frequencies. "A" weighting is commonly used to simulate the frequency response of the ear. It is used in the assessment of the risk of damage to hearing due to noise.
<b>Decibel (dB)</b>	The range of audible sound pressures is approximately $2 \times 10^{-5}$ Pa to 200 Pa. Using decibel notation presents this range in a more manageable form, 0 dB to 140 dB. Mathematically: Sound Pressure Level (dB) = $20 \log \{ p(t) / P_o \}$ where $P_o = 2 \times 10^{-5}$ Pa
<b>Frequency (Hz)</b>	The number of cycles per second; for sound this is subjectively perceived as pitch.
<b>Frequency Spectrum</b>	The analysis of the relative contributions of different frequencies that make up a noise.
<b><math>L_{eq(T)}</math></b>	The equivalent continuous sound level. It is that steady sound level which would produce the same energy over a given time period, (T) as a specified time varying sound.
<b><math>L_{A90,T}</math></b>	Background noise level. The A-weighted sound pressure level of the residual noise in decibels exceeded for 90% of a given time interval.
<b><math>L_{A10,T}</math></b>	The A-weighted sound pressure level of the residual noise in decibels exceeded for 10% of a given time interval. This is the parameter defined by the government to describe road traffic noise.
<b><math>L_{A1,T}</math></b>	The A-weighted sound pressure level of the residual noise in decibels exceeded for 1% of a given time interval.
<b>Noise</b>	Unwanted sound.



## APPENDIX 2

### WIND DATA

Date	Time	Wind Speed	Wind Direction	Wind Run	Hi Speed	Hi Direction
23/05/2006	15:30	0.9	SW	0.27	4	SW
23/05/2006	15:35	1.3	SW	0.4	3.1	SW
23/05/2006	15:40	1.3	SSW	0.4	3.1	SSW
23/05/2006	15:45	0.4	SSW	0.13	2.7	S
23/05/2006	15:50	1.3	SSW	0.4	2.7	SSW
23/05/2006	15:55	0.9	SSW	0.27	2.7	SSW
23/05/2006	16:00	0.9	SSW	0.27	2.7	SSW
23/05/2006	16:05	1.3	SSW	0.4	2.7	SSW
23/05/2006	16:10	0.9	SSW	0.27	2.2	SSW
23/05/2006	16:15	1.3	SSW	0.4	3.6	S
23/05/2006	16:20	1.8	SW	0.54	3.6	SW
23/05/2006	16:25	0.4	S	0.13	2.7	SSW
23/05/2006	16:30	0.4	SSW	0.13	1.8	SSW
23/05/2006	16:35	1.3	SSW	0.4	2.7	SSW
23/05/2006	16:40	0.9	SW	0.27	4	SSW
23/05/2006	16:45	1.3	SSW	0.4	3.6	SW
23/05/2006	16:50	0.4	SSW	0.13	2.7	SSW
23/05/2006	16:55	1.3	SSW	0.4	2.7	SSW
23/05/2006	17:00	1.3	SSW	0.4	3.1	SSW
23/05/2006	17:05	0.9	SSW	0.27	2.7	SW
23/05/2006	17:10	1.8	SSW	0.54	3.6	SSW
23/05/2006	17:15	1.3	SW	0.4	3.1	SW
23/05/2006	17:20	0.9	SSW	0.27	4	WSW
23/05/2006	17:25	0.9	SSW	0.27	2.2	SW
23/05/2006	17:30	0.4	SSW	0.13	1.8	S
23/05/2006	17:35	0.9	SW	0.27	3.6	SSW
23/05/2006	17:40	2.2	SSW	0.67	4.5	S
23/05/2006	17:45	2.2	SSW	0.67	4.5	SW
23/05/2006	17:50	1.3	SSW	0.4	3.6	SSW
23/05/2006	17:55	1.3	SSW	0.4	3.1	SW
23/05/2006	18:00	1.8	SW	0.54	3.1	SW
30/05/2006	20:50	0.4	NNW	0.13	4.9	W
30/05/2006	20:55	0.4	NW	0.13	2.2	NNW
30/05/2006	21:00	0.4	NW	0.13	1.8	WSW
30/05/2006	21:05	0	NNW	0	0.9	WNW
30/05/2006	21:10	0	NW	0	0.4	NW
30/05/2006	21:15	0	NNW	0	0.9	W
30/05/2006	21:20	0	NW	0	0.9	NW
30/05/2006	21:25	0	N	0	1.8	SE
30/05/2006	21:30	0.4	N	0.13	2.7	W
30/05/2006	21:35	0.4	N	0.13	1.3	NE
30/05/2006	21:40	0	NNE	0	0.9	NNE
30/05/2006	21:45	0	NNW	0	1.3	N
30/05/2006	21:50	0	NNW	0	0.4	NNW
30/05/2006	21:55	0	N	0	0.9	NNW
30/05/2006	22:00	0	NNW	0	1.3	NNW
30/05/2006	22:05	0.4	SSW	0.13	1.8	SSW
30/05/2006	22:10	0	WNW	0	0.9	WNW
30/05/2006	22:15	0	N	0	0.9	N

Date	Time	Wind Speed	Wind Direction	Wind Run	Hi Speed	Hi Direction
30/05/2006	22:20	0.4	NW	0.13	1.3	NNW
30/05/2006	22:25	0	NNW	0	0.9	NNW
30/05/2006	22:30	0	SSW	0	1.3	SSW
30/05/2006	22:35	0.4	SSW	0.13	1.8	WNW
30/05/2006	22:40	0	NNW	0	0.9	ENE
30/05/2006	22:45	0	NNE	0	1.3	SSE
30/05/2006	22:50	0.4	NNW	0.13	1.3	NNW
30/05/2006	22:55	0.4	NW	0.13	0.9	NW
30/05/2006	23:00	0	S	0	1.3	SSW
30/05/2006	23:05	0	SSW	0	0.9	S
30/05/2006	23:10	0	NNW	0	0.4	NNW
30/05/2006	23:15	0	NNW	0	0.4	WNW
30/05/2006	23:20	0	SSW	0	0.9	SSW
30/05/2006	23:25	0	SSW	0	0.4	SSW
30/05/2006	23:30	0	S	0	1.3	S
30/05/2006	23:35	0.4	SSW	0.13	2.2	S
30/05/2006	23:40	0.4	SSW	0.13	2.2	SSE
30/05/2006	23:45	0	S	0	1.3	SW
30/05/2006	23:50	0	SSW	0	1.3	SSW
30/05/2006	23:55	0.4	SSW	0.13	1.8	SSE
31/05/2006	00:00	0.9	SSW	0.27	1.8	SSW
31/05/2006	00:05	0.4	SSW	0.13	2.2	S
31/05/2006	00:10	0.4	SSW	0.13	2.2	SSW
31/05/2006	00:15	0.4	SSW	0.13	1.3	S
31/05/2006	00:20	0.4	SSW	0.13	2.2	SSW
31/05/2006	00:25	0.4	SSW	0.13	2.2	SSW
31/05/2006	00:30	0.4	SSW	0.13	2.2	SSW
31/05/2006	00:35	0.4	SSW	0.13	1.3	SSW
31/05/2006	00:40	0.4	SSW	0.13	2.2	S
31/05/2006	00:45	0.9	SSW	0.27	2.2	SSW
31/05/2006	00:50	0.4	SSW	0.13	1.3	SSW
31/05/2006	00:55	0.4	SSW	0.13	1.8	SSW
31/05/2006	01:00	0	E	0	0.4	E
31/05/2006	01:05	0	NE	0	0.9	W
31/05/2006	01:10	0.4	SSW	0.13	2.2	SSW
31/05/2006	01:15	0	N	0	0.9	N
31/05/2006	01:20	0	WNW	0	0.9	NW
31/05/2006	01:25	0	NW	0	1.8	WNW
31/05/2006	01:30	0	NNW	0	1.3	NNW
31/05/2006	01:35	0	NNW	0	1.3	NNW
31/05/2006	01:40	0	NNW	0	0.4	NNW
31/05/2006	01:45	0	N	0	0.4	N
31/05/2006	01:50	0	NNE	0	0.4	NNE
31/05/2006	01:55	0	SSW	0	1.3	SSW
31/05/2006	02:00	0.4	SSW	0.13	1.8	SSW
31/05/2006	02:05	0.4	SSW	0.13	2.7	SSW
31/05/2006	02:10	0.4	SSW	0.13	2.2	SSW
31/05/2006	02:15	0.4	SSW	0.13	1.3	SSW
31/05/2006	02:20	0.4	SSW	0.13	1.8	SSW
31/05/2006	02:25	0.9	SSW	0.27	2.7	SSW
31/05/2006	02:30	0.9	SSW	0.27	2.2	SSW
31/05/2006	02:35	0	SSW	0	1.8	SSW
31/05/2006	02:40	0.4	SSW	0.13	1.8	SSW
31/05/2006	02:45	1.3	SSW	0.4	2.2	SSW
31/05/2006	02:50	1.3	SSW	0.4	3.1	SSW

Date	Time	Wind Speed	Wind Direction	Wind Run	Hi Speed	Hi Direction
31/05/2006	02:55	0.9	SSW	0.27	2.2	SSW
31/05/2006	03:00	0.9	SSW	0.27	2.2	SSW
31/05/2006	03:05	1.3	SSW	0.4	3.1	SSW
31/05/2006	03:10	0.4	SSW	0.13	2.2	SW
31/05/2006	03:15	0.9	SSW	0.27	1.8	SSW
31/05/2006	03:20	1.3	SSW	0.4	4	SSW
31/05/2006	03:25	0.4	SSW	0.13	1.8	SSW
31/05/2006	03:30	0.9	SSW	0.27	2.2	SW
31/05/2006	03:35	1.3	SSW	0.4	2.7	SSW
31/05/2006	03:40	1.3	SSW	0.4	2.2	S
31/05/2006	03:45	1.8	SSW	0.54	3.1	SSW
31/05/2006	03:50	1.3	SSW	0.4	2.7	SSW
31/05/2006	03:55	1.8	SSW	0.54	4.5	SSW
31/05/2006	04:00	1.8	SSW	0.54	4	SSW
31/05/2006	04:05	1.3	SSW	0.4	3.1	SSW
31/05/2006	04:10	1.3	SSW	0.4	3.1	SSW
31/05/2006	04:15	1.3	SSW	0.4	2.7	SSW
31/05/2006	04:20	1.8	SSW	0.54	2.7	SSW
31/05/2006	04:25	1.8	SSW	0.54	2.7	SSW
31/05/2006	04:30	1.3	SSW	0.4	3.1	SSW
31/05/2006	04:35	0.4	SSW	0.13	1.8	S
31/05/2006	04:40	0	---	0	0	---
31/05/2006	04:45	0	SSW	0	1.8	SSW
31/05/2006	04:50	0	SSW	0	1.3	SSW
31/05/2006	04:55	0.4	SSW	0.13	1.8	SW
31/05/2006	05:00	0	SSW	0	1.3	SW
31/05/2006	05:05	0.4	SSW	0.13	1.3	SSW
31/05/2006	05:10	0.4	SSW	0.13	1.8	S
31/05/2006	05:15	0	SSW	0	0.9	SSW
31/05/2006	05:20	0	---	0	0	---
31/05/2006	05:25	0.4	SSW	0.13	2.2	SSW
31/05/2006	05:30	0.9	SSW	0.27	2.2	S
31/05/2006	05:35	0.9	SSW	0.27	2.7	S
31/05/2006	05:40	0.4	SSW	0.13	2.7	SSW
31/05/2006	05:45	0.9	SSW	0.27	4	SSW
31/05/2006	05:50	0.9	SSW	0.27	4.5	SW
31/05/2006	05:55	0.9	SSW	0.27	2.7	SSW
31/05/2006	06:00	0.9	SSW	0.27	2.7	SSW
31/05/2006	06:05	0.9	SSW	0.27	2.7	SSW
31/05/2006	06:10	1.8	SSW	0.54	3.1	SSW
31/05/2006	06:15	1.3	SSW	0.4	4.5	SSW
31/05/2006	06:20	0.9	SSW	0.27	3.1	S
31/05/2006	06:25	0.9	SSW	0.27	2.7	SSW
31/05/2006	06:30	0.9	SSW	0.27	2.7	SW
31/05/2006	06:35	0.9	SW	0.27	2.7	SW
31/05/2006	06:40	0.9	SSW	0.27	4	SW
31/05/2006	06:45	0.4	WSW	0.13	2.7	SSW
31/05/2006	06:50	0.9	SSW	0.27	2.7	SSW
31/05/2006	06:55	0.9	SSW	0.27	3.1	SSW
31/05/2006	07:00	0.4	SSW	0.13	3.1	SSW
31/05/2006	07:05	0.4	NNW	0.13	2.2	SSW
31/05/2006	07:10	0	NW	0	0.9	W
31/05/2006	07:15	0	WNW	0	0.9	WNW
31/05/2006	07:20	0.4	SSW	0.13	1.3	NNW
31/05/2006	07:25	0.4	SSW	0.13	2.7	SW

Date	Time	Wind Speed	Wind Direction	Wind Run	Hi Speed	Hi Direction
31/05/2006	07:30	1.3	SSW	0.4	3.1	WSW
31/05/2006	07:35	0.4	SSW	0.13	4	S
31/05/2006	07:40	0.4	SSW	0.13	4	SSW
31/05/2006	07:45	0.4	N	0.13	2.2	N
31/05/2006	07:50	0.4	N	0.13	2.2	NW
31/05/2006	07:55	0.4	NNW	0.13	1.8	SSW
31/05/2006	08:00	0.9	SW	0.27	3.1	S
31/05/2006	08:05	0.4	N	0.13	1.8	NNE
31/05/2006	08:10	0.9	NNW	0.27	2.7	SSW
31/05/2006	08:15	0.9	NW	0.27	3.1	S
31/05/2006	08:20	0.9	NNW	0.27	2.2	NNW
31/05/2006	08:25	0	NW	0	1.3	W
31/05/2006	08:30	0.4	SSW	0.13	2.2	SSW
31/05/2006	08:35	0.4	N	0.13	1.3	N
31/05/2006	08:40	0.4	NNW	0.13	3.1	NNE
31/05/2006	08:45	0.4	WNW	0.13	2.7	W
31/05/2006	08:50	0.4	NNW	0.13	2.2	NNW
31/05/2006	08:55	0.9	NNW	0.27	2.2	N
31/05/2006	09:00	0.4	WNW	0.13	1.3	WNW
31/05/2006	09:05	0.4	SSW	0.13	2.2	S
31/05/2006	09:10	0.9	NNW	0.27	2.2	WSW
31/05/2006	09:15	0.4	S	0.13	2.2	SW
31/05/2006	09:20	0.4	NNW	0.13	3.1	S
31/05/2006	09:25	0.4	N	0.13	1.3	NW
31/05/2006	09:30	0.4	S	0.13	2.2	S
31/05/2006	09:35	0.4	SSW	0.13	1.8	SW
31/05/2006	09:40	0.4	SSW	0.13	3.1	SSW
31/05/2006	09:45	0.4	WNW	0.13	1.8	W
31/05/2006	09:50	0.4	NNW	0.13	1.8	NNW
31/05/2006	09:55	0.4	NW	0.13	1.3	NNW
31/05/2006	10:00	0.4	NNW	0.13	1.8	NNW
31/05/2006	10:05	0.4	NNW	0.13	2.2	NNW
31/05/2006	10:10	0.4	NNW	0.13	4	NNW
31/05/2006	10:15	0.9	SW	0.27	3.6	SSW
31/05/2006	10:20	0.9	SSW	0.27	3.1	SW
31/05/2006	10:25	0.4	NW	0.13	2.2	WNW
31/05/2006	10:30	0	NNW	0	1.8	N
31/05/2006	10:35	0.4	NW	0.13	1.3	NNE
31/05/2006	10:40	0	N	0	0.9	WNW
31/05/2006	10:45	0.4	NW	0.13	1.8	NE
31/05/2006	10:50	0	NW	0	1.8	W
31/05/2006	10:55	0.4	W	0.13	3.1	W
31/05/2006	11:00	0	N	0	1.8	N
31/05/2006	11:05	0.4	N	0.13	1.8	NNW
31/05/2006	11:10	0.4	NNW	0.13	1.8	W
31/05/2006	11:15	0.4	NNW	0.13	2.2	SSW
31/05/2006	11:20	0.4	NNW	0.13	2.7	SSW
31/05/2006	11:25	0.4	SW	0.13	4	S
31/05/2006	11:30	0.4	NNW	0.13	1.8	NNW
31/05/2006	11:35	0.4	NNW	0.13	1.3	NNW
31/05/2006	11:40	0.4	SSW	0.13	4	SSW
31/05/2006	11:45	0.4	NW	0.13	2.2	NNE
31/05/2006	11:50	0.4	N	0.13	2.2	W
31/05/2006	11:55	0.4	WNW	0.13	1.8	SSW
31/05/2006	12:00	0.4	NNW	0.13	1.3	N

Date	Time	Wind Speed	Wind Direction	Wind Run	Hi Speed	Hi Direction
31/05/2006	12:05	0.4	SW	0.13	2.2	SSW
31/05/2006	12:10	0.4	SSW	0.13	2.7	S
31/05/2006	12:15	0	WNW	0	0.9	WNW
31/05/2006	12:20	0.4	WNW	0.13	2.7	SSW
31/05/2006	12:25	0.4	NNW	0.13	1.3	NNW
31/05/2006	12:30	0.4	NNW	0.13	1.8	NW
31/05/2006	12:35	0.4	NNW	0.13	1.3	W
31/05/2006	12:40	0	N	0	1.8	NNW
31/05/2006	12:45	0.9	NNW	0.27	2.7	NNW
31/05/2006	12:50	0.4	SW	0.13	2.2	SSW
31/05/2006	12:55	0.4	NW	0.13	4	SSW
31/05/2006	13:00	0.4	W	0.13	2.2	SSE
31/05/2006	13:05	0.4	NNW	0.13	1.3	NNW
31/05/2006	13:10	0.4	SSW	0.13	4	SSW
31/05/2006	13:15	0.9	SSW	0.27	4	S
31/05/2006	13:20	0.4	NNW	0.13	1.8	NW
31/05/2006	13:25	0	NNE	0	0.9	WNW
31/05/2006	13:30	0	WNW	0	2.2	NW
31/05/2006	13:35	0.4	N	0.13	1.8	SW
31/05/2006	13:40	0	SW	0	1.3	SSW
31/05/2006	13:45	0	NNW	0	2.2	WNW
31/05/2006	13:50	0	NNW	0	0.9	NNW
31/05/2006	13:55	0.4	NW	0.13	1.3	NW
31/05/2006	14:00	0.4	NNW	0.13	1.8	WNW
31/05/2006	14:05	0.4	NW	0.13	1.8	NNW
31/05/2006	14:10	0	NNW	0	1.3	NNW
31/05/2006	14:15	0.4	SSW	0.13	2.7	WSW
31/05/2006	14:20	0.9	SSW	0.27	5.8	S
31/05/2006	14:25	0.4	NW	0.13	1.3	NNW
31/05/2006	14:30	0.4	NW	0.13	3.1	S
31/05/2006	14:35	0.4	NNW	0.13	1.3	NW
31/05/2006	14:40	0.4	NNW	0.13	1.8	NNW
31/05/2006	14:45	0.4	NW	0.13	2.2	SSW
31/05/2006	14:50	0.4	SW	0.13	4	S
31/05/2006	14:55	0.4	W	0.13	2.7	SSW
31/05/2006	15:00	1.8	SSW	0.54	5.4	SSW
31/05/2006	15:05	0.9	NNW	0.27	4.5	SW
31/05/2006	15:10	0.4	SSW	0.13	3.1	SSW
31/05/2006	15:15	0.4	NNE	0.13	2.2	NNE
31/05/2006	15:20	0.4	N	0.13	1.3	NNW
31/05/2006	15:25	0.9	NNW	0.27	2.7	SSW
31/05/2006	15:30	0.4	NW	0.13	1.3	NNW
31/05/2006	15:35	0.4	NNW	0.13	1.3	NNW
31/05/2006	15:40	0.4	NNW	0.13	1.3	SW
31/05/2006	15:45	0.4	NW	0.13	1.3	W
31/05/2006	15:50	0.4	WSW	0.13	2.2	SSW
31/05/2006	15:55	0	SSW	0	1.3	S
31/05/2006	16:00	0.4	WNW	0.13	1.3	SW
31/05/2006	16:05	0.4	WSW	0.13	3.1	SW
31/05/2006	16:10	0.4	NW	0.13	2.7	S
31/05/2006	16:15	0	W	0	1.3	NNE
31/05/2006	16:20	0	ENE	0	1.3	W
31/05/2006	16:25	0.4	SSW	0.13	3.1	SW
31/05/2006	16:30	0.4	N	0.13	3.1	SSW
31/05/2006	16:35	0	WNW	0	1.3	WNW

Date	Time	Wind Speed	Wind Direction	Wind Run	Hi Speed	Hi Direction
31/05/2006	16:40	0	NNW	0	1.3	NNW
31/05/2006	16:45	0.4	NNW	0.13	0.9	NNW
31/05/2006	16:50	0	W	0	0.9	W
31/05/2006	16:55	0	N	0	1.3	ESE
31/05/2006	17:00	0.4	N	0.13	1.3	N
31/05/2006	17:05	0	NNW	0	0.9	NNW
31/05/2006	17:10	0	NNE	0	0.9	NNE
31/05/2006	17:15	0.4	N	0.13	0.9	W
31/05/2006	17:20	0	WNW	0	0.9	WNW
31/05/2006	17:25	0	N	0	0.4	N
31/05/2006	17:30	0	W	0	1.3	W
31/05/2006	17:35	0	NW	0	0.9	NW
31/05/2006	17:40	0	WNW	0	0.9	WNW
31/05/2006	17:45	0	WNW	0	1.8	W
31/05/2006	17:50	0	WNW	0	0.4	WNW
31/05/2006	17:55	0	NW	0	0.9	NW
31/05/2006	18:00	0	NE	0	0.9	ENE
31/05/2006	18:05	0	NW	0	1.3	NW
31/05/2006	18:10	0	WNW	0	0.9	NNE
31/05/2006	18:15	0	NW	0	0.9	NW
31/05/2006	18:20	0	NNW	0	0.4	NNW
31/05/2006	18:25	0	W	0	1.3	W
31/05/2006	18:30	0	WNW	0	0.9	WNW
31/05/2006	18:35	0	NW	0	0.9	NW
31/05/2006	18:40	0	N	0	0.9	N
31/05/2006	18:45	0	NW	0	0.4	NW
31/05/2006	18:50	0	NNW	0	0.9	NNW
31/05/2006	18:55	0	NNW	0	0.4	NNW
31/05/2006	19:00	0	NNE	0	1.3	NNE
31/05/2006	19:05	0	---	0	0	---
31/05/2006	19:10	0	---	0	0	---
31/05/2006	19:15	0	---	0	0	---
31/05/2006	19:20	0	---	0	0	---
31/05/2006	19:25	0	---	0	0	---
31/05/2006	19:30	0	---	0	0	---
31/05/2006	19:35	0	---	0	0	---
31/05/2006	19:40	0	---	0	0	---
31/05/2006	19:45	0	---	0	0	---
31/05/2006	19:50	0	---	0	0	---
31/05/2006	19:55	0	---	0	0	---
31/05/2006	20:00	0	---	0	0	---
31/05/2006	20:05	0	---	0	0	---
31/05/2006	20:10	0	---	0	0	---
31/05/2006	20:15	0	---	0	0	---
31/05/2006	20:20	0	---	0	0	---
31/05/2006	20:25	0	---	0	0	---
31/05/2006	20:30	0	---	0	0	---
31/05/2006	20:35	0	---	0	0	---
31/05/2006	20:40	0	---	0	0	---
31/05/2006	20:45	0	---	0	0	---
31/05/2006	20:50	0	---	0	0	---
31/05/2006	20:55	0	---	0	0	---
31/05/2006	21:00	0	---	0	0	---
31/05/2006	21:05	0	---	0	0	---
31/05/2006	21:10	0	---	0	0	---

Date	Time	Wind Speed	Wind Direction	Wind Run	Hi Speed	Hi Direction
31/05/2006	21:15	0	---	0	0	---
31/05/2006	21:20	0	---	0	0	---
31/05/2006	21:25	0	---	0	0	---
31/05/2006	21:30	0	---	0	0	---
31/05/2006	21:35	0	---	0	0	---
31/05/2006	21:40	0	---	0	0	---
31/05/2006	21:45	0	---	0	0	---
31/05/2006	21:50	0	---	0	0	---
31/05/2006	21:55	0	---	0	0	---
31/05/2006	22:00	0	---	0	0	---
31/05/2006	22:05	0	---	0	0	---
31/05/2006	22:10	0	NE	0	0.4	NE
31/05/2006	22:15	0	NE	0	0.4	NE
31/05/2006	22:20	0	N	0	0.4	NE
31/05/2006	22:25	0	---	0	0	---
31/05/2006	22:30	0	---	0	0	---
31/05/2006	22:35	0	---	0	0	---
31/05/2006	22:40	0	---	0	0	---
31/05/2006	22:45	0	---	0	0	---
31/05/2006	22:50	0	---	0	0	---
31/05/2006	22:55	0	---	0	0	---
31/05/2006	23:00	0	---	0	0	---
31/05/2006	23:05	0	---	0	0	---
31/05/2006	23:10	0	---	0	0	---
31/05/2006	23:15	0	---	0	0	---
31/05/2006	23:20	0	---	0	0	---
31/05/2006	23:25	0	---	0	0	---
31/05/2006	23:30	0	---	0	0	---
31/05/2006	23:35	0	---	0	0	---
31/05/2006	23:40	0	---	0	0	---
31/05/2006	23:45	0	---	0	0	---
31/05/2006	23:50	0	---	0	0	---
31/05/2006	23:55	0	---	0	0	---
01/06/2006	00:00	0	WSW	0	0.9	SW
01/06/2006	00:05	0	---	0	0	---
01/06/2006	00:10	0	---	0	0	---
01/06/2006	00:15	0	---	0	0	---
01/06/2006	00:20	0	---	0	0	---
01/06/2006	00:25	0	---	0	0	---
01/06/2006	00:30	0	---	0	0	---
01/06/2006	00:35	0	---	0	0	---
01/06/2006	00:40	0	---	0	0	---
01/06/2006	00:45	0	---	0	0	---
01/06/2006	00:50	0	---	0	0	---
01/06/2006	00:55	0	---	0	0	---
01/06/2006	01:00	0	---	0	0	---
01/06/2006	01:05	0	---	0	0	---
01/06/2006	01:10	0	---	0	0	---
01/06/2006	01:15	0	---	0	0	---
01/06/2006	01:20	0	---	0	0	---
01/06/2006	01:25	0	---	0	0	---
01/06/2006	01:30	0	---	0	0	---
01/06/2006	01:35	0	---	0	0	---
01/06/2006	01:40	0	---	0	0	---
01/06/2006	01:45	0	---	0	0	---

Date	Time	Wind Speed	Wind Direction	Wind Run	Hi Speed	Hi Direction
01/06/2006	01:50	0	---	0	0	---
01/06/2006	01:55	0	---	0	0	---
01/06/2006	02:00	0	---	0	0	---
01/06/2006	02:05	0	---	0	0	---
01/06/2006	02:10	0	---	0	0	---
01/06/2006	02:15	0	---	0	0	---
01/06/2006	02:20	0	---	0	0	---
01/06/2006	02:25	0	---	0	0	---
01/06/2006	02:30	0	---	0	0	---
01/06/2006	02:35	0	---	0	0	---
01/06/2006	02:40	0	---	0	0	---
01/06/2006	02:45	0	---	0	0	---
01/06/2006	02:50	0	---	0	0	---
01/06/2006	02:55	0	---	0	0	---
01/06/2006	03:00	0	---	0	0	---
01/06/2006	03:05	0	---	0	0	---
01/06/2006	03:10	0	---	0	0	---
01/06/2006	03:15	0	---	0	0	---
01/06/2006	03:20	0	---	0	0	---
01/06/2006	03:25	0	---	0	0	---
01/06/2006	03:30	0	---	0	0	---
01/06/2006	03:35	0	---	0	0	---
01/06/2006	03:40	0	---	0	0	---
01/06/2006	03:45	0	---	0	0	---
01/06/2006	03:50	0	---	0	0	---
01/06/2006	03:55	0	---	0	0	---
01/06/2006	04:00	0	---	0	0	---
01/06/2006	04:05	0	---	0	0	---
01/06/2006	04:10	0	---	0	0	---
01/06/2006	04:15	0	---	0	0	---
01/06/2006	04:20	0	---	0	0	---
01/06/2006	04:25	0	---	0	0	---
01/06/2006	04:30	0	---	0	0	---
01/06/2006	04:35	0	---	0	0	---
01/06/2006	04:40	0	---	0	0	---
01/06/2006	04:45	0	---	0	0	---
01/06/2006	04:50	0	---	0	0	---
01/06/2006	04:55	0	---	0	0	---
01/06/2006	05:00	0	---	0	0	---
01/06/2006	05:05	0	---	0	0	---
01/06/2006	05:10	0	---	0	0	---
01/06/2006	05:15	0	---	0	0	---
01/06/2006	05:20	0	---	0	0	---
01/06/2006	05:25	0	---	0	0	---
01/06/2006	05:30	0	---	0	0	---
01/06/2006	05:35	0	---	0	0	---
01/06/2006	05:40	0	---	0	0	---
01/06/2006	05:45	0	---	0	0	---
01/06/2006	05:50	0	---	0	0	---
01/06/2006	05:55	0	---	0	0	---
01/06/2006	06:00	0	---	0	0	---
01/06/2006	06:05	0	---	0	0	---
01/06/2006	06:10	0	---	0	0	---
01/06/2006	06:15	0	---	0	0	---
01/06/2006	06:20	0	---	0	0	---



Date	Time	Wind Speed	Wind Direction	Wind Run	Hi Speed	Hi Direction
01/06/2006	06:25	0	---	0	0	---
01/06/2006	06:30	0	---	0	0	---
01/06/2006	06:35	0	---	0	0	---
01/06/2006	06:40	0	---	0	0	---
01/06/2006	06:45	0	---	0	0	---
01/06/2006	06:50	0	---	0	0	---
01/06/2006	06:55	0	---	0	0	---
01/06/2006	07:00	0	---	0	0	---
01/06/2006	07:05	0	---	0	0	---
01/06/2006	07:10	0	---	0	0	---
01/06/2006	07:15	0	---	0	0	---
01/06/2006	07:20	0	---	0	0	---
01/06/2006	07:25	0	---	0	0	---
01/06/2006	07:30	0	---	0	0	---
01/06/2006	07:35	0	---	0	0	---
01/06/2006	07:40	0	---	0	0	---
01/06/2006	07:45	0	---	0	0	---
01/06/2006	07:50	0	---	0	0	---
01/06/2006	07:55	0	---	0	0	---
01/06/2006	08:00	0	---	0	0	---
01/06/2006	08:05	0	---	0	0	---
01/06/2006	08:10	0	---	0	0	---
01/06/2006	08:15	0	---	0	0	---
01/06/2006	08:20	0	---	0	0	---
01/06/2006	08:25	0	---	0	0	---
01/06/2006	08:30	0	---	0	0	---
01/06/2006	08:35	0	---	0	0	---
01/06/2006	08:40	0	---	0	0	---
01/06/2006	08:45	0	---	0	0	---
01/06/2006	08:50	0	---	0	0	---
01/06/2006	08:55	0	---	0	0	---
01/06/2006	09:00	0	---	0	0	---
01/06/2006	09:05	0	---	0	0	---
01/06/2006	09:10	0	---	0	0	---
01/06/2006	09:15	0	---	0	0	---
01/06/2006	09:20	0	---	0	0	---
01/06/2006	09:25	0	---	0	0	---
01/06/2006	09:30	0	---	0	0	---
01/06/2006	09:35	0	---	0	0	---
01/06/2006	09:40	0	---	0	0	---
01/06/2006	09:45	0	---	0	0	---
01/06/2006	09:50	0	SSW	0	1.3	SSW
01/06/2006	09:55	0.4	SSW	0.13	1.3	SSW
01/06/2006	10:00	0	S	0	1.3	SSW
01/06/2006	10:05	0	---	0	0	---
01/06/2006	10:10	0	---	0	0	---
01/06/2006	10:15	0.4	SSW	0.13	1.8	SSW
01/06/2006	10:20	0	S	0	0.4	SW
01/06/2006	10:25	0	SSW	0	1.8	S
01/06/2006	10:30	0.9	SSW	0.27	2.2	SSW
01/06/2006	10:35	0.4	SSW	0.13	1.8	SSW
01/06/2006	10:40	0	WSW	0	0.9	SSE
01/06/2006	10:45	0.4	SW	0.13	2.2	SW
01/06/2006	10:50	0	N	0	3.1	SSW
01/06/2006	10:55	1.3	SSW	0.4	3.1	SSW

Date	Time	Wind Speed	Wind Direction	Wind Run	Hi Speed	Hi Direction
01/06/2006	11:00	0.9	SSW	0.27	4	S
01/06/2006	11:05	0.9	SSW	0.27	3.1	SSW
01/06/2006	11:10	0.4	SSW	0.13	2.7	SSW
01/06/2006	11:15	0.4	SSW	0.13	2.2	S
01/06/2006	11:20	0	SSW	0	0.9	SSW
01/06/2006	11:25	0.9	SSW	0.27	4.5	SW
01/06/2006	11:30	0.9	SSW	0.27	2.7	SSW
01/06/2006	11:35	0.9	SSW	0.27	3.1	SSW
01/06/2006	11:40	1.3	SSW	0.4	2.7	SSW
01/06/2006	11:45	0.9	SSW	0.27	2.7	SSW
01/06/2006	11:50	0	S	0	1.8	S
01/06/2006	11:55	0	SW	0	2.2	SW
01/06/2006	12:00	0.4	SSW	0.13	2.2	SSW
01/06/2006	12:05	0	NE	0	0.4	SE
01/06/2006	12:10	0.4	S	0.13	2.2	SSW
01/06/2006	12:15	0.4	SSW	0.13	2.2	S
01/06/2006	12:20	0.4	SSW	0.13	1.8	S
01/06/2006	12:25	0.4	SSW	0.13	1.8	S
01/06/2006	12:30	0	SSW	0	1.3	SSW
01/06/2006	12:35	0	S	0	0.9	S
01/06/2006	12:40	0.4	SSW	0.13	2.7	SW
01/06/2006	12:45	0.4	SSW	0.13	2.2	SSW
01/06/2006	12:50	0.9	SSW	0.27	2.7	SSW
01/06/2006	12:55	0.9	SSW	0.27	2.7	SW
01/06/2006	13:00	0.9	SSW	0.27	3.6	SSE
01/06/2006	13:05	0	NNW	0	1.8	SSW
01/06/2006	13:10	0	N	0	0.9	N
01/06/2006	13:15	0	SW	0	1.3	SSW
01/06/2006	13:20	0.9	SSW	0.27	2.7	SSW
01/06/2006	13:25	0	NNE	0	0.9	N
01/06/2006	13:30	0	---	0	0	---
01/06/2006	13:35	0	---	0	0	---
01/06/2006	13:40	0	---	0	0	---
01/06/2006	13:45	0	---	0	0	---
01/06/2006	13:50	0	SSW	0	1.3	S
01/06/2006	13:55	0	SSW	0	0.4	SSW
01/06/2006	14:00	0	---	0	0	---
01/06/2006	14:05	0	---	0	0	---
01/06/2006	14:10	0	---	0	0	---
01/06/2006	14:15	0	SSW	0	0.4	SE
01/06/2006	14:20	0	SSW	0	0.4	SSW
01/06/2006	14:25	0	SSW	0	0.9	S
01/06/2006	14:30	0	---	0	0	---
01/06/2006	14:35	0	---	0	0	---
01/06/2006	14:40	0	---	0	0	---
01/06/2006	14:45	0	E	0	0.4	E
01/06/2006	14:50	0	---	0	0	---
01/06/2006	14:55	0	ENE	0	0.4	ENE
01/06/2006	15:00	0	ENE	0	0.4	ENE
01/06/2006	15:05	0	NE	0	0.4	ENE
01/06/2006	15:10	0	---	0	0	---
01/06/2006	15:15	0	NE	0	0.9	NE
01/06/2006	15:20	0	---	0	0	---
01/06/2006	15:25	0	---	0	0	---
01/06/2006	15:30	0	---	0	0	---

Date	Time	Wind Speed	Wind Direction	Wind Run	Hi Speed	Hi Direction
01/06/2006	15:35	0	---	0	0	---
01/06/2006	15:40	0	ENE	0	0.4	ENE
01/06/2006	15:45	0	ENE	0	0.4	ENE
01/06/2006	15:50	0	---	0	0	---
01/06/2006	15:55	0	ENE	0	0.4	ENE
01/06/2006	16:00	0	---	0	0	---
01/06/2006	16:05	0	NNW	0	0.4	NNW
01/06/2006	16:10	0	N	0	0.9	N
01/06/2006	16:15	0	NE	0	0.4	NNW
01/06/2006	16:20	0	NE	0	0.4	NE
01/06/2006	16:25	0	---	0	0	---
01/06/2006	16:30	0	NNE	0	0.4	NNE
01/06/2006	16:35	0	NNE	0	0.4	NNE
01/06/2006	16:40	0	---	0	0	---
01/06/2006	16:45	0	NNE	0	1.3	NNE
01/06/2006	16:50	0	N	0	0.9	N
01/06/2006	16:55	0	NNW	0	0.4	N
01/06/2006	17:00	0	NE	0	0.9	NE
01/06/2006	17:05	0	NNE	0	0.9	NE
01/06/2006	17:10	0	NW	0	0.4	NNW
01/06/2006	17:15	0	NW	0	0.4	NW
01/06/2006	17:20	0	N	0	1.3	NE
01/06/2006	17:25	0	NW	0	0.4	NE
01/06/2006	17:30	0	SSW	0	0.4	NW
01/06/2006	17:35	0	SW	0	0.9	SW
01/06/2006	17:40	0	ENE	0	0.4	ENE
01/06/2006	17:45	0	ENE	0	0.4	ENE
01/06/2006	17:50	0	ESE	0	0.4	ENE
01/06/2006	17:55	0	ENE	0	0.9	N
01/06/2006	18:00	0	ENE	0	0.4	ENE
01/06/2006	18:05	0	ENE	0	0.4	E
01/06/2006	18:10	0	NE	0	0.9	NE
01/06/2006	18:15	0	SSE	0	0.4	SSE
01/06/2006	18:20	0	---	0	0	---
01/06/2006	18:25	0	---	0	0	---
01/06/2006	18:30	0	---	0	0	---
01/06/2006	18:35	0	W	0	0.4	W
01/06/2006	18:40	0	---	0	0	---
01/06/2006	18:45	0	N	0	0.4	N
01/06/2006	18:50	0	NE	0	1.3	NE
01/06/2006	18:55	0	NE	0	0.4	NE
01/06/2006	19:00	0	---	0	0	---
01/06/2006	19:05	0	SW	0	0.9	SSW
01/06/2006	19:10	0	NE	0	0.4	NE
01/06/2006	19:15	0	---	0	0	---
01/06/2006	19:20	0	---	0	0	---
01/06/2006	19:25	0	---	0	0	---
01/06/2006	19:30	0	---	0	0	---
01/06/2006	19:35	0	---	0	0	---
01/06/2006	19:40	0	---	0	0	---
01/06/2006	19:45	0	---	0	0	---
01/06/2006	19:50	0	---	0	0	---
01/06/2006	19:55	0	NE	0	0.4	NE
01/06/2006	20:00	0	---	0	0	---
01/06/2006	20:05	0	---	0	0	---

Date	Time	Wind Speed	Wind Direction	Wind Run	Hi Speed	Hi Direction
01/06/2006	20:10	0	NE	0	0.4	NE
01/06/2006	20:15	0	NE	0	0.4	NE
01/06/2006	20:20	0	---	0	0	---
01/06/2006	20:25	0	---	0	0	---
01/06/2006	20:30	0	---	0	0	---
01/06/2006	20:35	0	---	0	0	---
01/06/2006	20:40	0	---	0	0	---
01/06/2006	20:45	0	---	0	0	---
01/06/2006	20:50	0	---	0	0	---
01/06/2006	20:55	0	---	0	0	---
01/06/2006	21:00	0	---	0	0	---
01/06/2006	21:05	0	---	0	0	---
01/06/2006	21:10	0	---	0	0	---
01/06/2006	21:15	0	---	0	0	---
01/06/2006	21:20	0	---	0	0	---
01/06/2006	21:25	0	---	0	0	---
01/06/2006	21:30	0	---	0	0	---
01/06/2006	21:35	0	---	0	0	---
01/06/2006	21:40	0	---	0	0	---
01/06/2006	21:45	0	---	0	0	---
01/06/2006	21:50	0	---	0	0	---
01/06/2006	21:55	0	---	0	0	---
01/06/2006	22:00	0	---	0	0	---
01/06/2006	22:05	0	---	0	0	---
01/06/2006	22:10	0	---	0	0	---
01/06/2006	22:15	0	---	0	0	---
01/06/2006	22:20	0	---	0	0	---
01/06/2006	22:25	0	---	0	0	---
01/06/2006	22:30	0	---	0	0	---
01/06/2006	22:35	0	---	0	0	---
01/06/2006	22:40	0	---	0	0	---
01/06/2006	22:45	0	---	0	0	---
01/06/2006	22:50	0	---	0	0	---
01/06/2006	22:55	0	---	0	0	---
01/06/2006	23:00	0	---	0	0	---
01/06/2006	23:05	0	---	0	0	---
01/06/2006	23:10	0	---	0	0	---
01/06/2006	23:15	0	---	0	0	---
01/06/2006	23:20	0	NE	0	0.4	NE
01/06/2006	23:25	0	NNW	0	0.4	NNW
01/06/2006	23:30	0	---	0	0	---
01/06/2006	23:35	0	N	0	0.4	N
01/06/2006	23:40	0	---	0	0	---
01/06/2006	23:45	0	---	0	0	---
01/06/2006	23:50	0	---	0	0	---
01/06/2006	23:55	0	---	0	0	---
02/06/2006	00:00	0	---	0	0	---
02/06/2006	00:05	0	---	0	0	---
02/06/2006	00:10	0	---	0	0	---
02/06/2006	00:15	0	---	0	0	---
02/06/2006	00:20	0	---	0	0	---
02/06/2006	00:25	0	---	0	0	---
02/06/2006	00:30	0	---	0	0	---
02/06/2006	00:35	0	---	0	0	---
02/06/2006	00:40	0.9	SSW	0.27	2.2	SSW

Date	Time	Wind Speed	Wind Direction	Wind Run	Hi Speed	Hi Direction
02/06/2006	00:45	0.4	SSW	0.13	2.2	SSW
02/06/2006	00:50	0.4	SSW	0.13	1.3	SSW
02/06/2006	00:55	1.3	SSW	0.4	2.2	SSW
02/06/2006	01:00	0.9	SSW	0.27	1.8	SSW
02/06/2006	01:05	0.9	SSW	0.27	1.8	SSW
02/06/2006	01:10	0.9	SSW	0.27	1.3	SSW
02/06/2006	01:15	0.4	SSW	0.13	0.9	SSW
02/06/2006	01:20	0	SSW	0	0.4	SSW
02/06/2006	01:25	0	SSW	0	0.4	SSW
02/06/2006	01:30	0.4	SSW	0.13	0.9	SSW
02/06/2006	01:35	0	SSW	0	0.4	SSW
02/06/2006	01:40	0	SSW	0	0.4	SSW
02/06/2006	01:45	0.4	SSW	0.13	1.3	SSW
02/06/2006	01:50	0	---	0	0	---
02/06/2006	01:55	0	SSW	0	0.9	SSW
02/06/2006	02:00	0.4	SSW	0.13	0.9	SSW
02/06/2006	02:05	0	SSW	0	0.4	SSW
02/06/2006	02:10	0	---	0	0	---
02/06/2006	02:15	0	SSW	0	0.4	SSW
02/06/2006	02:20	0	SSW	0	0.9	SSW
02/06/2006	02:25	0.9	SSW	0.27	2.7	SSW
02/06/2006	02:30	0.4	SSW	0.13	1.3	SSW
02/06/2006	02:35	0.4	SSW	0.13	1.3	SSW
02/06/2006	02:40	0.4	SSW	0.13	1.3	SSW
02/06/2006	02:45	0.4	SSW	0.13	1.8	SW
02/06/2006	02:50	0.9	SSW	0.27	1.3	SSW
02/06/2006	02:55	0.4	SSW	0.13	1.3	SSW
02/06/2006	03:00	0	---	0	0	---
02/06/2006	03:05	0	---	0	0	---
02/06/2006	03:10	0	---	0	0	---
02/06/2006	03:15	0	---	0	0	---
02/06/2006	03:20	0	---	0	0	---
02/06/2006	03:25	0	---	0	0	---
02/06/2006	03:30	0	---	0	0	---
02/06/2006	03:35	0	---	0	0	---
02/06/2006	03:40	0	---	0	0	---
02/06/2006	03:45	0	---	0	0	---
02/06/2006	03:50	0	---	0	0	---
02/06/2006	03:55	0	---	0	0	---
02/06/2006	04:00	0	---	0	0	---
02/06/2006	04:05	0	---	0	0	---
02/06/2006	04:10	0	---	0	0	---
02/06/2006	04:15	0	SSW	0	0.9	SSW
02/06/2006	04:20	0	SSW	0	0.4	SSW
02/06/2006	04:25	0	---	0	0	---
02/06/2006	04:30	0	---	0	0	---
02/06/2006	04:35	0	---	0	0	---
02/06/2006	04:40	0	---	0	0	---
02/06/2006	04:45	0	---	0	0	---
02/06/2006	04:50	0	---	0	0	---
02/06/2006	04:55	0	---	0	0	---
02/06/2006	05:00	0	---	0	0	---
02/06/2006	05:05	0	---	0	0	---
02/06/2006	05:10	0	---	0	0	---
02/06/2006	05:15	0	---	0	0	---

Date	Time	Wind Speed	Wind Direction	Wind Run	Hi Speed	Hi Direction
02/06/2006	05:20	0	---	0	0	---
02/06/2006	05:25	0	SSW	0	0.4	SSW
02/06/2006	05:30	0	---	0	0	---
02/06/2006	05:35	0	---	0	0	---
02/06/2006	05:40	0	---	0	0	---
02/06/2006	05:45	0	---	0	0	---
02/06/2006	05:50	0	---	0	0	---
02/06/2006	05:55	0	---	0	0	---
02/06/2006	06:00	0	---	0	0	---
02/06/2006	06:05	0	---	0	0	---
02/06/2006	06:10	0	---	0	0	---
02/06/2006	06:15	0	---	0	0	---
02/06/2006	06:20	0	---	0	0	---
02/06/2006	06:25	0	---	0	0	---
02/06/2006	06:30	0	---	0	0	---
02/06/2006	06:35	0	---	0	0	---
02/06/2006	06:40	0	---	0	0	---
02/06/2006	06:45	0	---	0	0	---
02/06/2006	06:50	0	---	0	0	---
02/06/2006	06:55	0	SE	0	0.4	SE
02/06/2006	07:00	0	SSW	0	1.3	SSW
02/06/2006	07:05	0.4	SSW	0.13	1.3	SSW
02/06/2006	07:10	0.4	SSW	0.13	1.3	SSW
02/06/2006	07:15	0.4	SSW	0.13	1.3	SSW
02/06/2006	07:20	0	SSW	0	0.4	SSW
02/06/2006	07:25	0	SSW	0	1.3	SSW
02/06/2006	07:30	0	SSW	0	0.9	SSW
02/06/2006	07:35	0	---	0	0	---
02/06/2006	07:40	0	SSW	0	0.4	SSW
02/06/2006	07:45	0	SSW	0	0.4	SSW
02/06/2006	07:50	0.4	SSW	0.13	1.8	S
02/06/2006	07:55	0.9	SSW	0.27	1.8	SSW
02/06/2006	08:00	0.4	SSW	0.13	1.3	SSW
02/06/2006	08:05	0	SSW	0	1.3	SSW
02/06/2006	08:10	0	S	0	0.9	S
02/06/2006	08:15	0.4	SSW	0.13	1.8	SW
02/06/2006	08:20	0	SSW	0	0.4	SSW
02/06/2006	08:25	0.4	SSW	0.13	1.8	SSW
02/06/2006	08:30	0.9	SSW	0.27	2.2	SSW
02/06/2006	08:35	0.9	SSW	0.27	1.8	S
02/06/2006	08:40	0.9	SSW	0.27	2.2	SSW
02/06/2006	08:45	0	S	0	0.9	SSW
02/06/2006	08:50	0	S	0	0.9	S
02/06/2006	08:55	0.4	SSW	0.13	2.7	SSW
02/06/2006	09:00	0.4	S	0.13	2.2	S
02/06/2006	09:05	0.4	SSW	0.13	1.8	SSW
02/06/2006	09:10	0	---	0	0	---
02/06/2006	09:15	0	SSW	0	0.9	SSW
02/06/2006	09:20	0	S	0	0.4	SSW
02/06/2006	09:25	0	S	0	0.9	S
02/06/2006	09:30	0.9	S	0.27	2.7	SSW
02/06/2006	09:35	0.4	SSW	0.13	1.8	SSW
02/06/2006	09:40	0.4	S	0.13	2.2	SSW
02/06/2006	09:45	0.4	S	0.13	1.8	SSW
02/06/2006	09:50	1.8	SSW	0.54	4.5	SSW

Date	Time	Wind Speed	Wind Direction	Wind Run	Hi Speed	Hi Direction
02/06/2006	09:55	0.9	SSW	0.27	3.1	SSW
02/06/2006	10:00	1.3	SSW	0.4	2.7	SSW
02/06/2006	10:05	0.9	SSW	0.27	2.7	SSW
02/06/2006	10:10	0	SW	0	0.9	SW
02/06/2006	10:15	0.4	SSW	0.13	1.8	SSW
02/06/2006	10:20	0	SW	0	0.9	SW
02/06/2006	10:25	0	SW	0	0.9	SSE
02/06/2006	10:30	0	SSW	0	1.8	SSW
02/06/2006	10:35	0	NNE	0	0.9	NNE
02/06/2006	10:40	0.4	SSW	0.13	1.8	SSW
02/06/2006	10:45	0	SW	0	1.3	SW
02/06/2006	10:50	0	N	0	0.4	NW
02/06/2006	10:55	0	NNW	0	0.4	WNW
02/06/2006	11:00	0	---	0	0	---
02/06/2006	11:05	0	WSW	0	1.3	SW
02/06/2006	11:10	0	NE	0	0.4	S
02/06/2006	11:15	0	ENE	0	0.9	E
02/06/2006	11:20	0	NE	0	0.9	NE
02/06/2006	11:25	0	NE	0	0.4	NE
02/06/2006	11:30	0.4	NNE	0.13	1.8	NNE
02/06/2006	11:35	0	NE	0	1.3	ENE
02/06/2006	11:40	0	NE	0	0.4	NE
02/06/2006	11:45	0	ENE	0	0.4	NE
02/06/2006	11:50	0	---	0	0	---
02/06/2006	11:55	0	ENE	0	0.4	ENE
02/06/2006	12:00	0	S	0	0.4	ENE
02/06/2006	12:05	0.4	SSW	0.13	1.8	SSW
02/06/2006	12:10	0	NE	0	0.9	NE
02/06/2006	12:15	0.4	NNE	0.13	1.3	N
02/06/2006	12:20	0	NNE	0	1.8	NE
02/06/2006	12:25	0	WNW	0	0.4	WNW
02/06/2006	12:30	0.4	SSW	0.13	1.3	SSW
02/06/2006	12:35	0	S	0	0.9	S
02/06/2006	12:40	0	NE	0	1.3	NE
02/06/2006	12:45	0	ENE	0	0.4	ENE
02/06/2006	12:50	0	N	0	1.3	NNW
02/06/2006	12:55	0	NW	0	0.4	NW
02/06/2006	13:00	0	NNE	0	0.9	NNE
02/06/2006	13:05	0	NNE	0	0.9	NNE
02/06/2006	13:10	0	N	0	1.3	N
02/06/2006	13:15	0	NE	0	1.8	NE
02/06/2006	13:20	0	ENE	0	1.3	NE
02/06/2006	13:25	0	NNW	0	0.9	NNW
02/06/2006	13:30	0	N	0	1.3	N
02/06/2006	13:35	0	N	0	0.9	N
02/06/2006	13:40	0	NNE	0	1.3	N
02/06/2006	13:45	0	S	0	0.4	NNW
02/06/2006	13:50	0.4	S	0.13	2.7	NE
02/06/2006	13:55	0.4	NE	0.13	2.2	NE
02/06/2006	14:00	0	S	0	0.9	S
02/06/2006	14:05	0	NNE	0	1.3	NNE
02/06/2006	14:10	0	ENE	0	0.9	SSW
02/06/2006	14:15	0	S	0	0.9	S
02/06/2006	14:20	0	SSW	0	0.9	SW
02/06/2006	14:25	0.4	NE	0.13	1.8	NE

Date	Time	Wind Speed	Wind Direction	Wind Run	Hi Speed	Hi Direction
02/06/2006	14:30	0	NNE	0	1.3	N
02/06/2006	14:35	0	NNE	0	1.3	NNE
02/06/2006	14:40	0	SSE	0	0.9	NNE
02/06/2006	14:45	0	S	0	1.3	SSW
02/06/2006	14:50	0	S	0	1.3	SSW
02/06/2006	14:55	0	SSE	0	2.2	NE
02/06/2006	15:00	0	N	0	1.8	N
02/06/2006	15:05	0	NNW	0	0.9	NNW
02/06/2006	15:10	0	S	0	0.9	S
02/06/2006	15:15	0	WNW	0	0.4	WNW
02/06/2006	15:20	0	N	0	1.3	N
02/06/2006	15:25	0	NNE	0	0.4	W
02/06/2006	15:30	0	NNW	0	0.4	NNE
02/06/2006	15:35	0.4	N	0.13	2.2	NNE
02/06/2006	15:40	0.4	NNW	0.13	2.2	NE
02/06/2006	15:45	0	NNW	0	0.9	NNW
02/06/2006	15:50	0	ENE	0	1.3	NE
02/06/2006	15:55	0	S	0	0.9	SSW
02/06/2006	16:00	0	WNW	0	0.9	WNW
02/06/2006	16:05	0	NNW	0	0.9	NW
02/06/2006	16:10	0	NNW	0	0.9	WSW
02/06/2006	16:15	0	WSW	0	0.9	W
02/06/2006	16:20	0	NNW	0	1.8	N
02/06/2006	16:25	0	SSE	0	0.9	SSW
02/06/2006	16:30	0	S	0	0.9	WSW
02/06/2006	16:35	0	SSW	0	1.3	SW
02/06/2006	16:40	0	NNE	0	0.9	NNE
02/06/2006	16:45	0	W	0	0.9	W
02/06/2006	16:50	0	SW	0	0.9	SW
02/06/2006	16:55	0	S	0	1.3	NNW
02/06/2006	17:00	0	SSW	0	0.9	SSW
02/06/2006	17:05	0	SSW	0	1.3	SSW
02/06/2006	17:10	0	NW	0	0.4	NW
02/06/2006	17:15	0	N	0	1.3	NNW
02/06/2006	17:20	0	N	0	0.4	N
02/06/2006	17:25	0	N	0	0.4	N
02/06/2006	17:30	0	N	0	0.4	N
02/06/2006	17:35	0	N	0	0.4	N
02/06/2006	17:40	0	N	0	0.4	N
02/06/2006	17:45	0	N	0	0.4	N
02/06/2006	17:50	0	N	0	0.4	N
02/06/2006	17:55	0.4	NE	0.13	1.8	NE
02/06/2006	18:00	0	NW	0	0.9	ESE
02/06/2006	18:05	0	---	0	0	---
02/06/2006	18:10	0	NW	0	0.4	NW
02/06/2006	18:15	0	NW	0	0.4	NW
02/06/2006	18:20	0	NW	0	0.4	NW
02/06/2006	18:25	0	---	0	0	---
02/06/2006	18:30	0	---	0	0	---
02/06/2006	18:35	0	---	0	0	---
02/06/2006	18:40	0	---	0	0	---
02/06/2006	18:45	0	---	0	0	---
02/06/2006	18:50	0	---	0	0	---
02/06/2006	18:55	0	NW	0	0.4	NW
02/06/2006	19:00	0	NW	0	0.4	NW



Date	Time	Wind Speed	Wind Direction	Wind Run	Hi Speed	Hi Direction
02/06/2006	19:05	0	---	0	0	---
02/06/2006	19:10	0	---	0	0	---
02/06/2006	19:15	0	---	0	0	---
02/06/2006	19:20	0	NW	0	0.4	NW
02/06/2006	19:25	0	NNE	0	0.4	NW
02/06/2006	19:30	0	---	0	0	---
02/06/2006	19:35	0	NNE	0	0.4	NNE
02/06/2006	19:40	0	NNE	0	0.9	NNE
02/06/2006	19:45	0	NNE	0	0.4	NNE
02/06/2006	19:50	0	NNE	0	0.4	NNE
02/06/2006	19:55	0	---	0	0	---
02/06/2006	20:00	0	---	0	0	---
02/06/2006	20:05	0	---	0	0	---
02/06/2006	20:10	0	---	0	0	---
02/06/2006	20:15	0	---	0	0	---
02/06/2006	20:20	0	---	0	0	---
02/06/2006	20:25	0	SSW	0	1.8	SSW
02/06/2006	20:30	0	SSW	0	0.4	SSW
02/06/2006	20:35	0	---	0	0	---
02/06/2006	20:40	0	SSW	0	1.3	SSW
02/06/2006	20:45	0.4	SSW	0.13	2.2	SSW
02/06/2006	20:50	0	SSW	0	0.4	SSW
02/06/2006	20:55	0	WSW	0	0.9	WSW
02/06/2006	21:00	0	SSW	0	1.3	SSW
02/06/2006	21:05	0	NNW	0	1.3	NNW
02/06/2006	21:10	0	NNW	0	0.4	NNW
02/06/2006	21:15	0	SW	0	0.4	NNW
02/06/2006	21:20	0.4	SSW	0.13	2.2	S
02/06/2006	21:25	0.4	SSW	0.13	2.2	SW
02/06/2006	21:30	0	NE	0	0.4	NE
02/06/2006	21:35	0	NE	0	0.4	NE
02/06/2006	21:40	0	NNE	0	0.4	NE
02/06/2006	21:45	0	NNE	0	0.9	N
02/06/2006	21:50	0	N	0	0.9	N
02/06/2006	21:55	0	N	0	0.4	N
02/06/2006	22:00	0.4	SW	0.13	1.3	SSW
02/06/2006	22:05	0.9	SW	0.27	2.7	SSW
02/06/2006	22:10	1.3	SSW	0.4	4	SSW
02/06/2006	22:15	1.3	SSW	0.4	2.7	SSW
02/06/2006	22:20	0.9	SSW	0.27	4	SSW
02/06/2006	22:25	1.3	SSW	0.4	2.7	SSW
02/06/2006	22:30	0.9	SSW	0.27	2.2	SW
02/06/2006	22:35	1.8	SSW	0.54	2.7	SSW
02/06/2006	22:40	1.3	SSW	0.4	2.2	SSW
02/06/2006	22:45	1.8	SSW	0.54	4	SSW
02/06/2006	22:50	1.8	SSW	0.54	3.1	SSW
02/06/2006	22:55	0.4	SSW	0.13	2.7	SSW
02/06/2006	23:00	0.9	SSW	0.27	2.2	SSW
02/06/2006	23:05	1.3	SSW	0.4	4	S
02/06/2006	23:10	1.3	SSW	0.4	3.1	SW
02/06/2006	23:15	0.9	SW	0.27	4.9	SSW
02/06/2006	23:20	0.9	SSW	0.27	3.6	SW
02/06/2006	23:25	2.2	SSW	0.67	4.9	SSW
02/06/2006	23:30	1.8	SSW	0.54	4.9	SSW
02/06/2006	23:35	1.8	SSW	0.54	4.9	SSW

Date	Time	Wind Speed	Wind Direction	Wind Run	Hi Speed	Hi Direction
02/06/2006	23:40	1.3	SSW	0.4	4	SSW
02/06/2006	23:45	0.9	WSW	0.27	2.7	SW
02/06/2006	23:50	0.4	WSW	0.13	2.7	S
02/06/2006	23:55	0.9	SSW	0.27	4.9	SW
03/06/2006	00:00	0.9	SSW	0.27	2.7	SSW
03/06/2006	00:05	1.8	SSW	0.54	3.6	SSW
03/06/2006	00:10	2.2	SSW	0.67	4.5	SSW
03/06/2006	00:15	3.1	SSW	0.94	4.9	SSW
03/06/2006	00:20	2.2	SSW	0.67	4.5	SSW
03/06/2006	00:25	1.8	SW	0.54	4.5	SSW
03/06/2006	00:30	0.4	SW	0.13	2.2	SSW
03/06/2006	00:35	1.8	SSW	0.54	4	SSW
03/06/2006	00:40	2.2	SSW	0.67	5.4	SSW
03/06/2006	00:45	1.3	SSW	0.4	3.6	SSW
03/06/2006	00:50	2.2	SSW	0.67	4.9	SSW
03/06/2006	00:55	1.3	SSW	0.4	5.8	SW
03/06/2006	01:00	2.2	SSW	0.67	4.5	SSW
03/06/2006	01:05	2.7	SSW	0.8	5.4	SSW
03/06/2006	01:10	2.2	SSW	0.67	4.9	SW
03/06/2006	01:15	2.7	SSW	0.8	4.9	SW
03/06/2006	01:20	3.1	SSW	0.94	5.8	SW
03/06/2006	01:25	3.1	SSW	0.94	5.8	SSW
03/06/2006	01:30	1.8	SSW	0.54	3.1	SW
03/06/2006	01:35	1.3	SSW	0.4	2.2	SSW
03/06/2006	01:40	0	SSW	0	0.9	SSW
03/06/2006	01:45	0	SSW	0	1.3	SSW
03/06/2006	01:50	0	SW	0	1.3	SW
03/06/2006	01:55	0.4	SSW	0.13	1.3	SW
03/06/2006	02:00	0.4	SSW	0.13	2.7	SSW
03/06/2006	02:05	0.4	SSW	0.13	1.8	SSW
03/06/2006	02:10	1.3	SSW	0.4	3.1	SW
03/06/2006	02:15	1.8	SSW	0.54	4.9	SSW
03/06/2006	02:20	2.2	SSW	0.67	4.5	SW
03/06/2006	02:25	1.3	SSW	0.4	3.1	SSW
03/06/2006	02:30	0.9	SSW	0.27	2.2	SW
03/06/2006	02:35	0.9	SSW	0.27	2.7	SSW
03/06/2006	02:40	1.3	SSW	0.4	4	SW
03/06/2006	02:45	0.9	SSW	0.27	2.7	SSW
03/06/2006	02:50	0.9	SSW	0.27	1.8	SSW
03/06/2006	02:55	1.8	SSW	0.54	2.7	SSW
03/06/2006	03:00	1.8	SSW	0.54	3.1	SSW
03/06/2006	03:05	1.3	SSW	0.4	2.7	SSW
03/06/2006	03:10	0.4	SSW	0.13	1.8	SSW
03/06/2006	03:15	0.9	SSW	0.27	3.1	SSW
03/06/2006	03:20	0.9	SSW	0.27	2.2	S
03/06/2006	03:25	0.9	SSW	0.27	2.2	SSW
03/06/2006	03:30	0.4	SSW	0.13	1.3	SSW
03/06/2006	03:35	0.4	SSW	0.13	1.3	SSW
03/06/2006	03:40	0.9	SSW	0.27	1.8	SSW
03/06/2006	03:45	0.9	SSW	0.27	1.3	SSW
03/06/2006	03:50	0.9	SSW	0.27	2.2	SSW
03/06/2006	03:55	0.9	SSW	0.27	1.3	SSW
03/06/2006	04:00	0.4	SSW	0.13	1.3	SSW
03/06/2006	04:05	0.4	SSW	0.13	1.3	SSW
03/06/2006	04:10	0	SSW	0	0.9	SSW

Date	Time	Wind Speed	Wind Direction	Wind Run	Hi Speed	Hi Direction
03/06/2006	04:15	0.4	SSW	0.13	1.3	SSW
03/06/2006	04:20	0	SSW	0	0.9	SSW
03/06/2006	04:25	0	SSW	0	0.9	SSW
03/06/2006	04:30	0	SSW	0	0.9	SSW
03/06/2006	04:35	0.4	SSW	0.13	1.3	SSW
03/06/2006	04:40	0	---	0	0	---
03/06/2006	04:45	0	---	0	0	---
03/06/2006	04:50	0	---	0	0	---
03/06/2006	04:55	0	---	0	0	---
03/06/2006	05:00	0	S	0	0.4	S
03/06/2006	05:05	0	SSW	0	2.7	S
03/06/2006	05:10	0.4	S	0.13	2.2	SSW
03/06/2006	05:15	0	S	0	1.8	S
03/06/2006	05:20	0	SSW	0	1.3	E
03/06/2006	05:25	0	NE	0	1.8	ENE
03/06/2006	05:30	0	S	0	1.3	S
03/06/2006	05:35	0.4	SSW	0.13	1.8	NW
03/06/2006	05:40	0.9	SSW	0.27	4.9	S
03/06/2006	05:45	0.4	SSW	0.13	5.8	SSW
03/06/2006	05:50	0.9	SSW	0.27	4.9	SSW
03/06/2006	05:55	0.9	SSW	0.27	4	SSW
03/06/2006	06:00	0.9	WSW	0.27	4	SSW
03/06/2006	06:05	0.9	SSW	0.27	4	SSW
03/06/2006	06:10	0.9	SW	0.27	2.7	S
03/06/2006	06:15	0.4	SSW	0.13	2.7	SSW
03/06/2006	06:20	0.9	SW	0.27	3.6	SSW
03/06/2006	06:25	1.3	SSW	0.4	4.9	WSW
03/06/2006	06:30	0.9	SSW	0.27	2.7	SSW
03/06/2006	06:35	1.3	SSW	0.4	4.5	SSW
03/06/2006	06:40	0.4	SW	0.13	2.2	S
03/06/2006	06:45	2.2	SSW	0.67	5.4	SSW
03/06/2006	06:50	1.3	SSW	0.4	6.7	SW
03/06/2006	06:55	1.8	SSW	0.54	6.3	SSW
03/06/2006	07:00	2.7	SSW	0.8	6.7	SSW
03/06/2006	07:05	2.7	SSW	0.8	6.3	SSW
03/06/2006	07:10	0.9	SSW	0.27	3.6	SSE
03/06/2006	07:15	1.3	SSW	0.4	4.5	SW
03/06/2006	07:20	0.4	SSW	0.13	2.2	SSW
03/06/2006	07:25	0	---	0	0	---
03/06/2006	07:30	0.4	SSW	0.13	1.8	SSW
03/06/2006	07:35	0.4	SW	0.13	2.7	S
03/06/2006	07:40	1.3	SSW	0.4	2.7	S
03/06/2006	07:45	2.2	SSW	0.67	6.3	SSW
03/06/2006	07:50	3.1	SSW	0.94	5.8	SSW
03/06/2006	07:55	1.8	SSW	0.54	4.5	SSW
03/06/2006	08:00	1.8	SSW	0.54	4.5	SSW
03/06/2006	08:05	1.3	SSW	0.4	4.5	SSW
03/06/2006	08:10	0.4	SSW	0.13	1.8	SSW
03/06/2006	08:15	1.8	SSW	0.54	4.9	SSW
03/06/2006	08:20	0.9	SSW	0.27	2.7	SSW
03/06/2006	08:25	1.8	SSW	0.54	5.4	SSW
03/06/2006	08:30	1.8	SSW	0.54	4.5	SSW
03/06/2006	08:35	2.2	SSW	0.67	4.9	S
03/06/2006	08:40	1.8	SW	0.54	6.3	S
03/06/2006	08:45	0.9	SSW	0.27	4	SSW

Date	Time	Wind Speed	Wind Direction	Wind Run	Hi Speed	Hi Direction
03/06/2006	08:50	2.2	SSW	0.67	4.5	SSW
03/06/2006	08:55	2.2	SSW	0.67	4.9	SW
03/06/2006	09:00	0.9	SSW	0.27	4.9	SSW
03/06/2006	09:05	1.3	SSW	0.4	3.6	SSW
03/06/2006	09:10	1.8	SSW	0.54	4.5	SSW
03/06/2006	09:15	0.4	WSW	0.13	2.2	SSW
03/06/2006	09:20	0.4	W	0.13	2.7	SSW
03/06/2006	09:25	2.2	SSW	0.67	4.9	S
03/06/2006	09:30	0.4	N	0.13	1.3	SW
03/06/2006	09:35	0.4	NNE	0.13	1.3	NNE
03/06/2006	09:40	0	NNE	0	0.9	NNE
03/06/2006	09:45	0	NNE	0	1.3	NNE
03/06/2006	09:50	0.4	N	0.13	1.3	N
03/06/2006	09:55	0	N	0	1.3	N
03/06/2006	10:00	0.4	NNW	0.13	1.3	WNW
03/06/2006	10:05	0.4	N	0.13	1.3	NNW
03/06/2006	10:10	0.4	NNW	0.13	0.9	NNW
03/06/2006	10:15	0	NNW	0	0.9	NNW
03/06/2006	10:20	0	NNW	0	0.4	NNW
03/06/2006	10:25	0	NNW	0	0.9	NNW
03/06/2006	10:30	0.4	NNW	0.13	1.3	NNW
03/06/2006	10:35	0	NNW	0	0.9	NNW
03/06/2006	10:40	0	WNW	0	1.3	NW
03/06/2006	10:45	0	NW	0	1.8	NW
03/06/2006	10:50	0	NW	0	0.9	NW
03/06/2006	10:55	0	NW	0	0.9	NW
03/06/2006	11:00	0.4	NW	0.13	1.3	NW
03/06/2006	11:05	0	NNW	0	0.9	NNW
03/06/2006	11:10	0.4	NW	0.13	1.3	NW
03/06/2006	11:15	0	NW	0	0.4	NW
03/06/2006	11:20	0	NW	0	0.9	WNW
03/06/2006	11:25	0	NNW	0	0.9	NNW
03/06/2006	11:30	0	NNW	0	1.3	NNW
03/06/2006	11:35	0	N	0	0.9	N
03/06/2006	11:40	0.4	NNW	0.13	0.9	NW
03/06/2006	11:45	0	NNW	0	0.9	NNW
03/06/2006	11:50	0.4	NW	0.13	1.3	NW
03/06/2006	11:55	0.4	N	0.13	1.3	N
03/06/2006	12:00	0	N	0	0.9	N
03/06/2006	12:05	0.4	N	0.13	0.9	N
03/06/2006	12:10	0	N	0	0.9	N
03/06/2006	12:15	0	NW	0	0.9	NW
03/06/2006	12:20	0.4	N	0.13	0.9	NNE
03/06/2006	12:25	0	N	0	0.9	NNW
03/06/2006	12:30	0	NW	0	0.4	N
03/06/2006	12:35	0	W	0	1.3	W
03/06/2006	12:40	0	N	0	0.9	N
03/06/2006	12:45	0	N	0	0.9	N
03/06/2006	12:50	0	N	0	0.4	N
03/06/2006	12:55	0	NNW	0	0.9	NNW
03/06/2006	13:00	0	NNW	0	1.3	NNW
03/06/2006	13:05	0	N	0	0.4	NW
03/06/2006	13:10	0	N	0	0.9	N
03/06/2006	13:15	0.4	N	0.13	1.3	N
03/06/2006	13:20	0	NNE	0	0.4	NNE

Date	Time	Wind Speed	Wind Direction	Wind Run	Hi Speed	Hi Direction
03/06/2006	13:25	0	NNW	0	0.9	NW
03/06/2006	13:30	0	NNW	0	0.9	NNW
03/06/2006	13:35	0	NNW	0	0.9	NW
03/06/2006	13:40	0.4	NNW	0.13	0.9	NNW
03/06/2006	13:45	0	NNW	0	0.9	NNW
03/06/2006	13:50	0	NNW	0	0.9	NW
03/06/2006	13:55	0	NNW	0	0.4	NNW
03/06/2006	14:00	0	N	0	0.4	N
03/06/2006	14:05	0	SSW	0	1.8	SSW
03/06/2006	14:10	0.4	SSW	0.13	2.2	SSW
03/06/2006	14:15	0.4	NNE	0.13	1.3	NNE
03/06/2006	14:20	0	N	0	0.4	N
03/06/2006	14:25	0	NNW	0	0.4	N
03/06/2006	14:30	0	NNW	0	0.9	NNE
03/06/2006	14:35	0	NW	0	0.4	NW
03/06/2006	14:40	0	NW	0	0.9	NW
03/06/2006	14:45	0	NW	0	0.9	NNE
03/06/2006	14:50	0	---	0	0	---
03/06/2006	14:55	0	WNW	0	1.3	S
03/06/2006	15:00	0	NW	0	0.4	WNW
03/06/2006	15:05	0	NNW	0	0.4	NW
03/06/2006	15:10	0	N	0	0.4	N
03/06/2006	15:15	0	N	0	0.4	N
03/06/2006	15:20	0	N	0	0.4	N
03/06/2006	15:25	0	N	0	0.4	N
03/06/2006	15:30	0	N	0	0.9	N
03/06/2006	15:35	0	N	0	0.4	N
03/06/2006	15:40	0	N	0	0.9	N
03/06/2006	15:45	0	N	0	0.9	N
03/06/2006	15:50	0	WNW	0	1.3	WNW
03/06/2006	15:55	0	W	0	0.9	NW
03/06/2006	16:00	0.4	NW	0.13	0.9	NW
03/06/2006	16:05	0	N	0	0.4	N
03/06/2006	16:10	0	NE	0	0.9	NE
03/06/2006	16:15	0	NW	0	0.4	NNE
03/06/2006	16:20	0	NW	0	0.4	NW
03/06/2006	16:25	0	N	0	1.3	N
03/06/2006	16:30	0	WNW	0	0.4	WNW
03/06/2006	16:35	0	WNW	0	0.4	WNW
03/06/2006	16:40	0	SSW	0	0.9	SSW
03/06/2006	16:45	0	WSW	0	0.4	E
03/06/2006	16:50	0	SW	0	0.4	WNW
03/06/2006	16:55	0	WNW	0	0.9	WNW
03/06/2006	17:00	0	N	0	0.9	NW
03/06/2006	17:05	0	NE	0	0.9	WNW
03/06/2006	17:10	0	NE	0	0.9	NE
03/06/2006	17:15	0	WNW	0	0.4	WNW
03/06/2006	17:20	0	NW	0	0.4	WNW
03/06/2006	17:25	0	NW	0	0.4	NW
03/06/2006	17:30	0	NNE	0	0.9	NNE
03/06/2006	17:35	0	---	0	0	---
03/06/2006	17:40	0	NNE	0	0.9	NNE
03/06/2006	17:45	0	NNE	0	0.4	NNE
03/06/2006	17:50	0	NNE	0	0.4	NNE
03/06/2006	17:55	0	---	0	0	---

Date	Time	Wind Speed	Wind Direction	Wind Run	Hi Speed	Hi Direction
03/06/2006	18:00	0	---	0	0	---
03/06/2006	18:05	0	NNE	0	1.3	NNE
03/06/2006	18:10	0.4	NNE	0.13	1.8	NNE
03/06/2006	18:15	0	---	0	0	---
03/06/2006	18:20	0	---	0	0	---
03/06/2006	18:25	0	NE	0	0.9	NE
03/06/2006	18:30	0	NE	0	1.3	NE
03/06/2006	18:35	0	NE	0	0.9	NE
03/06/2006	18:40	0	---	0	0	---
03/06/2006	18:45	0	---	0	0	---
03/06/2006	18:50	0	---	0	0	---
03/06/2006	18:55	0	NE	0	0.4	NE
03/06/2006	19:00	0	NE	0	0.4	NE
03/06/2006	19:05	0	---	0	0	---
03/06/2006	19:10	0	---	0	0	---
03/06/2006	19:15	0	---	0	0	---
03/06/2006	19:20	0	NE	0	0.4	NE
03/06/2006	19:25	0	E	0	0.4	E
03/06/2006	19:30	0	---	0	0	---
03/06/2006	19:35	0	E	0	0.4	E
03/06/2006	19:40	0	---	0	0	---
03/06/2006	19:45	0	ESE	0	0.4	ESE
03/06/2006	19:50	0	---	0	0	---
03/06/2006	19:55	0	---	0	0	---
03/06/2006	20:00	0	---	0	0	---
03/06/2006	20:05	0	NNE	0	1.3	NNE
03/06/2006	20:10	0	NNE	0	0.9	NNE
03/06/2006	20:15	0	---	0	0	---
03/06/2006	20:20	0	---	0	0	---
03/06/2006	20:25	0	---	0	0	---
03/06/2006	20:30	0	---	0	0	---
03/06/2006	20:35	0	---	0	0	---
03/06/2006	20:40	0	---	0	0	---
03/06/2006	20:45	0	---	0	0	---
03/06/2006	20:50	0	---	0	0	---
03/06/2006	20:55	0	---	0	0	---
03/06/2006	21:00	0	---	0	0	---
03/06/2006	21:05	0	---	0	0	---
03/06/2006	21:10	0	NNE	0	0.4	NNE
03/06/2006	21:15	0	---	0	0	---
03/06/2006	21:20	0	NNE	0	0.4	NNE
03/06/2006	21:25	0	---	0	0	---
03/06/2006	21:30	0	NNE	0	0.4	NNE
03/06/2006	21:35	0	NNE	0	0.4	NNE
03/06/2006	21:40	0	NE	0	1.8	NNE
03/06/2006	21:45	0	---	0	0	---
03/06/2006	21:50	0	NE	0	0.9	NE
03/06/2006	21:55	0	---	0	0	---
03/06/2006	22:00	0	NE	0	0.4	NE
03/06/2006	22:05	0	NE	0	0.4	NE
03/06/2006	22:10	0	---	0	0	---
03/06/2006	22:15	0	---	0	0	---
03/06/2006	22:20	0	NE	0	0.9	ENE
03/06/2006	22:25	0	---	0	0	---
03/06/2006	22:30	0	---	0	0	---

Date	Time	Wind Speed	Wind Direction	Wind Run	Hi Speed	Hi Direction
03/06/2006	22:35	0	---	0	0	---
03/06/2006	22:40	0	---	0	0	---
03/06/2006	22:45	0	NE	0	0.4	NE
03/06/2006	22:50	0	---	0	0	---
03/06/2006	22:55	0	---	0	0	---
03/06/2006	23:00	0	NNW	0	0.4	NE
03/06/2006	23:05	0	NNW	0	0.4	NNW
03/06/2006	23:10	0	---	0	0	---
03/06/2006	23:15	0	---	0	0	---
03/06/2006	23:20	0	---	0	0	---
03/06/2006	23:25	0	---	0	0	---
03/06/2006	23:30	0	---	0	0	---
03/06/2006	23:35	0	---	0	0	---
03/06/2006	23:40	0	---	0	0	---
03/06/2006	23:45	0	---	0	0	---
03/06/2006	23:50	0	---	0	0	---
03/06/2006	23:55	0	---	0	0	---
04/06/2006	00:00	0	---	0	0	---
04/06/2006	00:05	0	---	0	0	---
04/06/2006	00:10	0	---	0	0	---
04/06/2006	00:15	0	---	0	0	---
04/06/2006	00:20	0	---	0	0	---
04/06/2006	00:25	0	---	0	0	---
04/06/2006	00:30	0	---	0	0	---
04/06/2006	00:35	0	---	0	0	---
04/06/2006	00:40	0	---	0	0	---
04/06/2006	00:45	0	NNW	0	0.4	NNW
04/06/2006	00:50	0	NNW	0	0.4	NNW
04/06/2006	00:55	0	---	0	0	---
04/06/2006	01:00	0	---	0	0	---
04/06/2006	01:05	0	---	0	0	---
04/06/2006	01:10	0	---	0	0	---
04/06/2006	01:15	0	---	0	0	---
04/06/2006	01:20	0	---	0	0	---
04/06/2006	01:25	0	---	0	0	---
04/06/2006	01:30	0	---	0	0	---
04/06/2006	01:35	0	---	0	0	---
04/06/2006	01:40	0	---	0	0	---
04/06/2006	01:45	0	---	0	0	---
04/06/2006	01:50	0	---	0	0	---
04/06/2006	01:55	0	---	0	0	---
04/06/2006	02:00	0	---	0	0	---
04/06/2006	02:05	0	---	0	0	---
04/06/2006	02:10	0	---	0	0	---
04/06/2006	02:15	0	---	0	0	---
04/06/2006	02:20	0	---	0	0	---
04/06/2006	02:25	0	---	0	0	---
04/06/2006	02:30	0	---	0	0	---
04/06/2006	02:35	0	---	0	0	---
04/06/2006	02:40	0	---	0	0	---
04/06/2006	02:45	0	---	0	0	---
04/06/2006	02:50	0	---	0	0	---
04/06/2006	02:55	0	---	0	0	---
04/06/2006	03:00	0	---	0	0	---
04/06/2006	03:05	0	---	0	0	---

Date	Time	Wind Speed	Wind Direction	Wind Run	Hi Speed	Hi Direction
04/06/2006	03:10	0	---	0	0	---
04/06/2006	03:15	0	---	0	0	---
04/06/2006	03:20	0	---	0	0	---
04/06/2006	03:25	0	---	0	0	---
04/06/2006	03:30	0	---	0	0	---
04/06/2006	03:35	0	---	0	0	---
04/06/2006	03:40	0	---	0	0	---
04/06/2006	03:45	0	---	0	0	---
04/06/2006	03:50	0	---	0	0	---
04/06/2006	03:55	0	---	0	0	---
04/06/2006	04:00	0	---	0	0	---
04/06/2006	04:05	0	---	0	0	---
04/06/2006	04:10	0	---	0	0	---
04/06/2006	04:15	0	---	0	0	---
04/06/2006	04:20	0	---	0	0	---
04/06/2006	04:25	0	---	0	0	---
04/06/2006	04:30	0	---	0	0	---
04/06/2006	04:35	0	---	0	0	---
04/06/2006	04:40	0	---	0	0	---
04/06/2006	04:45	0	---	0	0	---
04/06/2006	04:50	0	---	0	0	---
04/06/2006	04:55	0	---	0	0	---
04/06/2006	05:00	0	---	0	0	---
04/06/2006	05:05	0	---	0	0	---
04/06/2006	05:10	0	---	0	0	---
04/06/2006	05:15	0	---	0	0	---
04/06/2006	05:20	0	---	0	0	---
04/06/2006	05:25	0	---	0	0	---
04/06/2006	05:30	0	---	0	0	---
04/06/2006	05:35	0	---	0	0	---
04/06/2006	05:40	0	---	0	0	---
04/06/2006	05:45	0	---	0	0	---
04/06/2006	05:50	0	---	0	0	---
04/06/2006	05:55	0	---	0	0	---
04/06/2006	06:00	0	---	0	0	---
04/06/2006	06:05	0	---	0	0	---
04/06/2006	06:10	0	---	0	0	---
04/06/2006	06:15	0	---	0	0	---
04/06/2006	06:20	0	---	0	0	---
04/06/2006	06:25	0	---	0	0	---
04/06/2006	06:30	0	---	0	0	---
04/06/2006	06:35	0	---	0	0	---
04/06/2006	06:40	0	---	0	0	---
04/06/2006	06:45	0	---	0	0	---
04/06/2006	06:50	0	---	0	0	---
04/06/2006	06:55	0	---	0	0	---
04/06/2006	07:00	0	---	0	0	---
04/06/2006	07:05	0	---	0	0	---
04/06/2006	07:10	0	---	0	0	---
04/06/2006	07:15	0	---	0	0	---
04/06/2006	07:20	0	---	0	0	---
04/06/2006	07:25	0	WSW	0	0.4	WNW
04/06/2006	07:30	0	WSW	0	0.4	WSW
04/06/2006	07:35	0	---	0	0	---
04/06/2006	07:40	0	---	0	0	---



Date	Time	Wind Speed	Wind Direction	Wind Run	Hi Speed	Hi Direction
04/06/2006	07:45	0	SW	0	0.9	SW
04/06/2006	07:50	0	SSW	0	0.9	SSW
04/06/2006	07:55	0.4	SSW	0.13	1.3	SSW
04/06/2006	08:00	0	SSW	0	0.9	SSW
04/06/2006	08:05	0	SSW	0	0.9	SSW
04/06/2006	08:10	0	---	0	0	---
04/06/2006	08:15	0	SSW	0	0.9	SSW
04/06/2006	08:20	0	SSW	0	0.4	SSW
04/06/2006	08:25	0.4	SSW	0.13	1.8	SSW
04/06/2006	08:30	0.4	SSW	0.13	1.8	SSW
04/06/2006	08:35	0	SSW	0	0.9	SSW
04/06/2006	08:40	0	SSW	0	0.9	SSW
04/06/2006	08:45	0.4	SSW	0.13	1.3	SSW
04/06/2006	08:50	0	---	0	0	---
04/06/2006	08:55	0.4	SSW	0.13	1.3	SSW
04/06/2006	09:00	0	SSW	0	0.9	SSW
04/06/2006	09:05	0.4	SSW	0.13	1.3	S
04/06/2006	09:10	0.4	SSW	0.13	0.9	SSW
04/06/2006	09:15	0	SSW	0	0.9	SSW
04/06/2006	09:20	0	SSW	0	0.9	SSW
04/06/2006	09:25	0.4	SSW	0.13	0.9	SSW
04/06/2006	09:30	0	SSW	0	0.9	SSW
04/06/2006	09:35	0.4	SSW	0.13	0.9	SSW
04/06/2006	09:40	0.4	SSW	0.13	1.8	SSW
04/06/2006	09:45	0.4	SSW	0.13	1.3	SSW
04/06/2006	09:50	0.4	SSW	0.13	1.3	SSW
04/06/2006	09:55	0	SSW	0	1.3	SSW
04/06/2006	10:00	0.4	SSW	0.13	1.3	SSW
04/06/2006	10:05	0.4	SSW	0.13	1.3	SSW
04/06/2006	10:10	0.4	SSW	0.13	1.3	SSW
04/06/2006	10:15	0.4	SSW	0.13	1.8	SSW
04/06/2006	10:20	0	SSW	0	0.9	SSW
04/06/2006	10:25	0	SSW	0	0.9	S
04/06/2006	10:30	0	S	0	0.4	SSW
04/06/2006	10:35	0	SSW	0	0.4	SSW
04/06/2006	10:40	0	---	0	0	---
04/06/2006	10:45	0	S	0	0.4	SSW
04/06/2006	10:50	0	S	0	0.4	S
04/06/2006	10:55	0	S	0	0.4	S
04/06/2006	11:00	0	S	0	0.4	S
04/06/2006	11:05	0	S	0	0.4	S
04/06/2006	11:10	0.4	SSW	0.13	1.8	SSW
04/06/2006	11:15	0.4	SSW	0.13	1.3	SSW
04/06/2006	11:20	0.9	SSW	0.27	1.8	SSW
04/06/2006	11:25	0.4	SSW	0.13	2.2	SW
04/06/2006	11:30	0	SSW	0	0.4	SSW
04/06/2006	11:35	0	ENE	0	0.9	ENE
04/06/2006	11:40	0	ENE	0	0.4	ENE
04/06/2006	11:45	0	ENE	0	0.4	ENE
04/06/2006	11:50	0	ENE	0	0.4	ENE
04/06/2006	11:55	0	ENE	0	0.9	ENE
04/06/2006	12:00	0	---	0	0	---
04/06/2006	12:05	0	ENE	0	0.4	ENE
04/06/2006	12:10	0	ENE	0	0.4	ENE
04/06/2006	12:15	0	ENE	0	0.9	ENE

Date	Time	Wind Speed	Wind Direction	Wind Run	Hi Speed	Hi Direction
04/06/2006	12:20	0	ENE	0	0.9	ENE
04/06/2006	12:25	0	NE	0	0.9	E
04/06/2006	12:30	0	ENE	0	2.2	NE
04/06/2006	12:35	0	NE	0	0.9	NE
04/06/2006	12:40	0.4	NE	0.13	0.9	NE
04/06/2006	12:45	0	NE	0	0.9	NE
04/06/2006	12:50	0.4	ENE	0.13	2.7	NNE
04/06/2006	12:55	0.4	NE	0.13	1.3	E
04/06/2006	13:00	0	NE	0	0.4	NE
04/06/2006	13:05	0.4	NE	0.13	0.9	NE
04/06/2006	13:10	0.4	NE	0.13	0.9	NE
04/06/2006	13:15	0.4	NNE	0.13	0.9	SSW
04/06/2006	13:20	0	NE	0	0.9	ENE
04/06/2006	13:25	0.4	NE	0.13	0.9	NE
04/06/2006	13:30	0.4	NE	0.13	0.9	NE
04/06/2006	13:35	0.4	NE	0.13	0.9	NE
04/06/2006	13:40	0.4	NE	0.13	0.9	NE
04/06/2006	13:45	0	NNE	0	0.9	NE
04/06/2006	13:50	0	NNE	0	0.4	NNE
04/06/2006	13:55	0.4	NE	0.13	1.3	NE
04/06/2006	14:00	0	NNE	0	0.9	E
04/06/2006	14:05	0	NE	0	0.9	ENE
04/06/2006	14:10	0	NE	0	1.8	NE
04/06/2006	14:15	0	NE	0	0.9	NE
04/06/2006	14:20	0	NE	0	0.9	NE
04/06/2006	14:25	0.4	NE	0.13	1.8	NE
04/06/2006	14:30	0	NE	0	1.3	NE
04/06/2006	14:35	0	NE	0	0.4	NE
04/06/2006	14:40	0	NE	0	0.4	NE
04/06/2006	14:45	0	NE	0	0.4	NE
04/06/2006	14:50	0	NE	0	0.4	NE
04/06/2006	14:55	0	NE	0	0.4	ENE
04/06/2006	15:00	0	NE	0	0.4	NE
04/06/2006	15:05	0	NE	0	0.9	NE
04/06/2006	15:10	0.4	ENE	0.13	1.8	ENE
04/06/2006	15:15	0	N	0	0.9	ENE
04/06/2006	15:20	0	NNE	0	0.9	NNE
04/06/2006	15:25	0.4	ENE	0.13	1.8	E
04/06/2006	15:30	0	NE	0	1.3	NNE
04/06/2006	15:35	0	ENE	0	0.9	ENE
04/06/2006	15:40	0	ENE	0	0.9	NE
04/06/2006	15:45	0.4	ENE	0.13	1.8	NE
04/06/2006	15:50	0	NE	0	0.4	NE
04/06/2006	15:55	0	NNE	0	1.3	NE
04/06/2006	16:00	0	ENE	0	0.9	ENE
04/06/2006	16:05	0	ENE	0	1.8	NE
04/06/2006	16:10	0.4	ENE	0.13	2.2	NE
04/06/2006	16:15	0	NNE	0	0.9	NNE
04/06/2006	16:20	0	NNE	0	1.3	NNE
04/06/2006	16:25	0.4	NNE	0.13	1.3	ENE
04/06/2006	16:30	0	NE	0	1.3	ENE
04/06/2006	16:35	0.4	NNE	0.13	2.2	NE
04/06/2006	16:40	0	NNE	0	0.9	NNE
04/06/2006	16:45	0	WNW	0	0.9	WNW
04/06/2006	16:50	0.4	NE	0.13	1.3	NE

Date	Time	Wind Speed	Wind Direction	Wind Run	Hi Speed	Hi Direction
04/06/2006	16:55	0.4	NE	0.13	1.3	ENE
04/06/2006	17:00	0.4	NNE	0.13	0.9	NNE
04/06/2006	17:05	0	NNE	0	0.9	NNE
04/06/2006	17:10	0	NNE	0	0.4	NNE
04/06/2006	17:15	0	NNE	0	0.4	NNE
04/06/2006	17:20	0	ENE	0	0.9	ENE
04/06/2006	17:25	0	NE	0	0.4	NE
04/06/2006	17:30	0	ENE	0	0.4	NE
04/06/2006	17:35	0	ENE	0	1.3	NNE
04/06/2006	17:40	0.4	NNE	0.13	1.8	NE
04/06/2006	17:45	0	NNE	0	0.9	NNE
04/06/2006	17:50	0	N	0	0.9	NE
04/06/2006	17:55	0	N	0	0.9	N
04/06/2006	18:00	0	NE	0	0.4	NE
04/06/2006	18:05	0	---	0	0	---
04/06/2006	18:10	0	NE	0	0.9	NE
04/06/2006	18:15	0	NE	0	0.4	NE
04/06/2006	18:20	0	NE	0	0.4	NE
04/06/2006	18:25	0	NE	0	0.4	NE
04/06/2006	18:30	0	NE	0	0.4	NE
04/06/2006	18:35	0	NE	0	0.4	NE
04/06/2006	18:40	0	NE	0	0.4	NE
04/06/2006	18:45	0	NE	0	0.4	NE
04/06/2006	18:50	0	---	0	0	---
04/06/2006	18:55	0	---	0	0	---
04/06/2006	19:00	0	NE	0	0.9	NE
04/06/2006	19:05	0	---	0	0	---
04/06/2006	19:10	0	ENE	0	0.4	ENE
04/06/2006	19:15	0	---	0	0	---
04/06/2006	19:20	0	NE	0	1.3	NE
04/06/2006	19:25	0	NE	0	0.9	NE
04/06/2006	19:30	0	---	0	0	---
04/06/2006	19:35	0	NE	0	0.4	NE
04/06/2006	19:40	0	NE	0	0.4	NE
04/06/2006	19:45	0	NE	0	0.4	NE
04/06/2006	19:50	0	---	0	0	---
04/06/2006	19:55	0	---	0	0	---
04/06/2006	20:00	0	---	0	0	---
04/06/2006	20:05	0	---	0	0	---
04/06/2006	20:10	0	NE	0	0.4	NE
04/06/2006	20:15	0	---	0	0	---
04/06/2006	20:20	0	---	0	0	---
04/06/2006	20:25	0	---	0	0	---
04/06/2006	20:30	0	NE	0	1.3	NNE
04/06/2006	20:35	0	---	0	0	---
04/06/2006	20:40	0	---	0	0	---
04/06/2006	20:45	0	---	0	0	---
04/06/2006	20:50	0	ENE	0	0.4	ENE
04/06/2006	20:55	0	---	0	0	---
04/06/2006	21:00	0	---	0	0	---
04/06/2006	21:05	0	---	0	0	---
04/06/2006	21:10	0	---	0	0	---
04/06/2006	21:15	0	---	0	0	---
04/06/2006	21:20	0	---	0	0	---
04/06/2006	21:25	0	ENE	0	0.4	ENE

Date	Time	Wind Speed	Wind Direction	Wind Run	Hi Speed	Hi Direction
04/06/2006	21:30	0	---	0	0	---
04/06/2006	21:35	0	---	0	0	---
04/06/2006	21:40	0	ENE	0	0.4	ENE
04/06/2006	21:45	0	---	0	0	---
04/06/2006	21:50	0	---	0	0	---
04/06/2006	21:55	0	---	0	0	---
04/06/2006	22:00	0	---	0	0	---
04/06/2006	22:05	0	---	0	0	---
04/06/2006	22:10	0	---	0	0	---
04/06/2006	22:15	0	---	0	0	---
04/06/2006	22:20	0	---	0	0	---
04/06/2006	22:25	0	---	0	0	---
04/06/2006	22:30	0	---	0	0	---
04/06/2006	22:35	0	---	0	0	---
04/06/2006	22:40	0	---	0	0	---
04/06/2006	22:45	0	---	0	0	---
04/06/2006	22:50	0	---	0	0	---
04/06/2006	22:55	0	---	0	0	---
04/06/2006	23:00	0	---	0	0	---
04/06/2006	23:05	0	---	0	0	---
04/06/2006	23:10	0	---	0	0	---
04/06/2006	23:15	0	---	0	0	---
04/06/2006	23:20	0	---	0	0	---
04/06/2006	23:25	0	---	0	0	---
04/06/2006	23:30	0	---	0	0	---
04/06/2006	23:35	0	---	0	0	---
04/06/2006	23:40	0	---	0	0	---
04/06/2006	23:45	0	---	0	0	---
04/06/2006	23:50	0	---	0	0	---
04/06/2006	23:55	0	---	0	0	---
05/06/2006	00:00	0	---	0	0	---
05/06/2006	00:05	0	ENE	0	0.4	ENE
05/06/2006	00:10	0	---	0	0	---
05/06/2006	00:15	0	---	0	0	---
05/06/2006	00:20	0	---	0	0	---
05/06/2006	00:25	0	---	0	0	---
05/06/2006	00:30	0	---	0	0	---
05/06/2006	00:35	0	---	0	0	---
05/06/2006	00:40	0	---	0	0	---
05/06/2006	00:45	0	---	0	0	---
05/06/2006	00:50	0	---	0	0	---
05/06/2006	00:55	0	---	0	0	---
05/06/2006	01:00	0	---	0	0	---
05/06/2006	01:05	0	---	0	0	---
05/06/2006	01:10	0	---	0	0	---
05/06/2006	01:15	0	---	0	0	---
05/06/2006	01:20	0	---	0	0	---
05/06/2006	01:25	0	---	0	0	---
05/06/2006	01:30	0	---	0	0	---
05/06/2006	01:35	0	---	0	0	---
05/06/2006	01:40	0	---	0	0	---
05/06/2006	01:45	0	---	0	0	---
05/06/2006	01:50	0	---	0	0	---
05/06/2006	01:55	0	---	0	0	---
05/06/2006	02:00	0	---	0	0	---

Date	Time	Wind Speed	Wind Direction	Wind Run	Hi Speed	Hi Direction
05/06/2006	02:05	0	---	0	0	---
05/06/2006	02:10	0	---	0	0	---
05/06/2006	02:15	0	---	0	0	---
05/06/2006	02:20	0	---	0	0	---
05/06/2006	02:25	0	ENE	0	0.4	ENE
05/06/2006	02:30	0	---	0	0	---
05/06/2006	02:35	0	ENE	0	0.4	ENE
05/06/2006	02:40	0	---	0	0	---
05/06/2006	02:45	0	---	0	0	---
05/06/2006	02:50	0	---	0	0	---
05/06/2006	02:55	0	---	0	0	---
05/06/2006	03:00	0	---	0	0	---
05/06/2006	03:05	0	---	0	0	---
05/06/2006	03:10	0	ENE	0	0.4	ENE
05/06/2006	03:15	0	---	0	0	---
05/06/2006	03:20	0	---	0	0	---
05/06/2006	03:25	0	---	0	0	---
05/06/2006	03:30	0	---	0	0	---
05/06/2006	03:35	0	---	0	0	---
05/06/2006	03:40	0	---	0	0	---
05/06/2006	03:45	0	---	0	0	---
05/06/2006	03:50	0	---	0	0	---
05/06/2006	03:55	0	---	0	0	---
05/06/2006	04:00	0	---	0	0	---
05/06/2006	04:05	0	---	0	0	---
05/06/2006	04:10	0	---	0	0	---
05/06/2006	04:15	0	---	0	0	---
05/06/2006	04:20	0	---	0	0	---
05/06/2006	04:25	0	---	0	0	---
05/06/2006	04:30	0	---	0	0	---
05/06/2006	04:35	0	---	0	0	---
05/06/2006	04:40	0	---	0	0	---
05/06/2006	04:45	0	---	0	0	---
05/06/2006	04:50	0	---	0	0	---
05/06/2006	04:55	0	---	0	0	---
05/06/2006	05:00	0	---	0	0	---
05/06/2006	05:05	0	---	0	0	---
05/06/2006	05:10	0	---	0	0	---
05/06/2006	05:15	0	---	0	0	---
05/06/2006	05:20	0	---	0	0	---
05/06/2006	05:25	0	ENE	0	0.9	ENE
05/06/2006	05:30	0	---	0	0	---
05/06/2006	05:35	0	ENE	0	0.4	ENE
05/06/2006	05:40	0	---	0	0	---
05/06/2006	05:45	0	---	0	0	---
05/06/2006	05:50	0	---	0	0	---
05/06/2006	05:55	0	---	0	0	---
05/06/2006	06:00	0	---	0	0	---
05/06/2006	06:05	0	NE	0	0.4	NE
05/06/2006	06:10	0	---	0	0	---
05/06/2006	06:15	0	---	0	0	---
05/06/2006	06:20	0	---	0	0	---
05/06/2006	06:25	0	---	0	0	---
05/06/2006	06:30	0	NE	0	0.4	NE
05/06/2006	06:35	0	---	0	0	---

Date	Time	Wind Speed	Wind Direction	Wind Run	Hi Speed	Hi Direction
05/06/2006	06:40	0	---	0	0	---
05/06/2006	06:45	0	---	0	0	---
05/06/2006	06:50	0	---	0	0	---
05/06/2006	06:55	0	---	0	0	---
05/06/2006	07:00	0	---	0	0	---
05/06/2006	07:05	0	NE	0	0.4	NE
05/06/2006	07:10	0	---	0	0	---
05/06/2006	07:15	0	---	0	0	---
05/06/2006	07:20	0	---	0	0	---
05/06/2006	07:25	0	NNE	0	0.4	NE
05/06/2006	07:30	0	---	0	0	---
05/06/2006	07:35	0	NNE	0	0.4	NNE
05/06/2006	07:40	0	---	0	0	---
05/06/2006	07:45	0	WNW	0	0.4	NNW
05/06/2006	07:50	0	WNW	0	0.4	WNW
05/06/2006	07:55	0	WNW	0	0.4	WNW
05/06/2006	08:00	0	---	0	0	---
05/06/2006	08:05	0	NE	0	0.4	NNW
05/06/2006	08:10	0	N	0	0.4	NE
05/06/2006	08:15	0	WNW	0	1.3	WNW
05/06/2006	08:20	0	WNW	0	0.4	WNW
05/06/2006	08:25	0	N	0	0.9	N
05/06/2006	08:30	0	N	0	0.9	N
05/06/2006	08:35	0	NE	0	0.4	NE
05/06/2006	08:40	0	---	0	0	---
05/06/2006	08:45	0	NE	0	0.4	NE
05/06/2006	08:50	0	NE	0	1.3	W
05/06/2006	08:55	0	NE	0	0.9	SSE
05/06/2006	09:00	0	ENE	0	0.4	ENE
05/06/2006	09:05	0	ENE	0	0.4	NE
05/06/2006	09:10	0	ENE	0	0.4	ENE
05/06/2006	09:15	0	NE	0	0.4	NE
05/06/2006	09:20	0	E	0	0.9	SE
05/06/2006	09:25	0	ENE	0	0.4	ENE
05/06/2006	09:30	0	---	0	0	---
05/06/2006	09:35	0	---	0	0	---
05/06/2006	09:40	0	---	0	0	---
05/06/2006	09:45	0	NE	0	1.3	NNE
05/06/2006	09:50	0.4	NE	0.13	1.3	NE
05/06/2006	09:55	0	NNE	0	0.9	NE
05/06/2006	10:00	0	N	0	0.4	N
05/06/2006	10:05	0	NE	0	0.9	NE
05/06/2006	10:10	0	NE	0	0.4	NE
05/06/2006	10:15	0	E	0	0.4	ENE
05/06/2006	10:20	0	NE	0	1.3	NE
05/06/2006	10:25	0	NE	0	1.3	NE
05/06/2006	10:30	0	NE	0	0.4	NE
05/06/2006	10:35	0	NNW	0	0.9	NNW
05/06/2006	10:40	0	NNW	0	0.4	NNW
05/06/2006	10:45	0	NE	0	0.9	NE
05/06/2006	10:50	0	---	0	0	---
05/06/2006	10:55	0	NNW	0	1.3	NNW
05/06/2006	11:00	0	---	0	0	---
05/06/2006	11:05	0	---	0	0	---
05/06/2006	11:10	0	NNE	0	0.9	NNE

Date	Time	Wind Speed	Wind Direction	Wind Run	Hi Speed	Hi Direction
05/06/2006	11:15	0	NNE	0	0.9	NNE
05/06/2006	11:20	0	N	0	0.4	N
05/06/2006	11:25	0	NE	0	1.3	N
05/06/2006	11:30	0	NNE	0	1.3	NE
05/06/2006	11:35	0	NNW	0	0.9	E
05/06/2006	11:40	0	NW	0	1.3	NW
05/06/2006	11:45	0	WNW	0	0.4	NW
05/06/2006	11:50	0	NW	0	0.9	NW
05/06/2006	11:55	0	ENE	0	1.3	NE
05/06/2006	12:00	0	NNE	0	1.3	N
05/06/2006	12:05	0	W	0	0.4	W
05/06/2006	12:10	0	NNE	0	0.9	ENE
05/06/2006	12:15	0	---	0	0	---
05/06/2006	12:20	0.4	NNE	0.13	2.2	NE
05/06/2006	12:25	0	NNE	0	1.3	N
05/06/2006	12:30	0	SSW	0	1.3	SE
05/06/2006	12:35	0	NE	0	1.3	E
05/06/2006	12:40	0	N	0	0.9	NNE
05/06/2006	12:45	0	NNE	0	0.4	N
05/06/2006	12:50	0	NE	0	0.4	E
05/06/2006	12:55	0	ENE	0	0.9	NE
05/06/2006	13:00	0	NNE	0	1.3	S
05/06/2006	13:05	0	NE	0	1.8	NE
05/06/2006	13:10	0	NNE	0	0.4	NE
05/06/2006	13:15	0	NW	0	0.9	NW
05/06/2006	13:20	0	N	0	1.3	N
05/06/2006	13:25	0	E	0	0.9	WNW
05/06/2006	13:30	0	NNE	0	1.3	NNE
05/06/2006	13:35	0	NE	0	0.9	NE
05/06/2006	13:40	0	NNE	0	1.3	N
05/06/2006	13:45	0	N	0	1.3	NNE
05/06/2006	13:50	0	N	0	0.9	N
05/06/2006	13:55	0	NNE	0	0.9	NNE
05/06/2006	14:00	0	NE	0	1.3	NE
05/06/2006	14:05	0.4	NE	0.13	1.3	NE
05/06/2006	14:10	0.4	NNE	0.13	1.8	NE
05/06/2006	14:15	0	N	0	0.4	N
05/06/2006	14:20	0	NNW	0	0.9	NNW
05/06/2006	14:25	0.4	NNE	0.13	2.2	NE
05/06/2006	14:30	0	W	0	0.9	NNE
05/06/2006	14:35	0.4	NE	0.13	2.2	NNE
05/06/2006	14:40	0	NNE	0	2.2	NNE
05/06/2006	14:45	0	NNW	0	1.3	NE
05/06/2006	14:50	0	NW	0	0.9	NW
05/06/2006	14:55	0	NW	0	0.4	N
05/06/2006	15:00	0	NNE	0	2.2	NNE
05/06/2006	15:05	0	ENE	0	1.3	S
05/06/2006	15:10	0.4	NNW	0.13	2.7	NE
05/06/2006	15:15	0.4	NNE	0.13	1.3	NNW
05/06/2006	15:20	0	NE	0	2.7	NE
05/06/2006	15:25	0.4	NNE	0.13	1.3	NNE
05/06/2006	15:30	0	NE	0	0.9	WSW
05/06/2006	15:35	0	NNE	0	0.4	NNE
05/06/2006	15:40	0.4	NNE	0.13	1.3	NE
05/06/2006	15:45	0	N	0	0.9	NE

Date	Time	Wind Speed	Wind Direction	Wind Run	Hi Speed	Hi Direction
05/06/2006	15:50	0	NNE	0	0.9	N
05/06/2006	15:55	0	N	0	1.3	N
05/06/2006	16:00	0	NE	0	1.8	NNE
05/06/2006	16:05	0	WNW	0	0.9	WNW
05/06/2006	16:10	0	W	0	0.9	NW
05/06/2006	16:15	0	NNW	0	1.3	NW
05/06/2006	16:20	0	NNE	0	1.3	NE
05/06/2006	16:25	0.4	NE	0.13	1.8	NE
05/06/2006	16:30	0	WNW	0	0.9	WNW
05/06/2006	16:35	0	NNE	0	0.9	NNE
05/06/2006	16:40	0	NE	0	1.3	N
05/06/2006	16:45	0	NNW	0	0.9	NNW
05/06/2006	16:50	0	NNE	0	0.9	NNE
05/06/2006	16:55	0	NE	0	0.4	NE
05/06/2006	17:00	0	NNE	0	1.8	NNE
05/06/2006	17:05	0	NNE	0	1.3	NNW
05/06/2006	17:10	0	NE	0	0.9	NE
05/06/2006	17:15	0	NE	0	0.9	NE
05/06/2006	17:20	0	NNE	0	1.8	NE
05/06/2006	17:25	0	---	0	0	---
05/06/2006	17:30	0	NE	0	0.4	NE
05/06/2006	17:35	0	NE	0	0.4	ENE
05/06/2006	17:40	0	NNE	0	3.1	NE
05/06/2006	17:45	0	NE	0	0.4	NNE
05/06/2006	17:50	0	WNW	0	0.4	N
05/06/2006	17:55	0	N	0	0.9	N
05/06/2006	18:00	0	S	0	1.3	SW
05/06/2006	18:05	0	NE	0	1.3	N
05/06/2006	18:10	0	NNW	0	1.3	N
05/06/2006	18:15	0	NNW	0	1.3	NE
05/06/2006	18:20	0	N	0	0.4	N
05/06/2006	18:25	0	NE	0	1.8	NE
05/06/2006	18:30	0	N	0	0.4	N
05/06/2006	18:35	0	NNE	0	2.2	N
05/06/2006	18:40	0	N	0	0.4	N
05/06/2006	18:45	0	SSW	0	0.9	SW
05/06/2006	18:50	0	NNW	0	0.9	SSE
05/06/2006	18:55	0	N	0	0.4	NNW
05/06/2006	19:00	0	N	0	0.9	N
05/06/2006	19:05	0	NE	0	0.9	NE
05/06/2006	19:10	0.4	NE	0.13	1.3	NE
05/06/2006	19:15	0	NE	0	1.3	NE
05/06/2006	19:20	0	NNE	0	0.9	NNE
05/06/2006	19:25	0	NNW	0	0.4	N
05/06/2006	19:30	0	NNE	0	0.9	NW
05/06/2006	19:35	0	ENE	0	1.3	NNE
05/06/2006	19:40	0	NNW	0	0.4	NNW
05/06/2006	19:45	0	N	0	0.4	NNW
05/06/2006	19:50	0	---	0	0	---
05/06/2006	19:55	0	NNW	0	0.4	NNW
05/06/2006	20:00	0	NNW	0	0.4	NNW
05/06/2006	20:05	0	N	0	0.9	N
05/06/2006	20:10	0	---	0	0	---
05/06/2006	20:15	0	N	0	0.4	N
05/06/2006	20:20	0	NNW	0	0.4	NNW



Date	Time	Wind Speed	Wind Direction	Wind Run	Hi Speed	Hi Direction
05/06/2006	20:25	0	NNE	0	0.4	NNE
05/06/2006	20:30	0	NNE	0	0.4	NNE
05/06/2006	20:35	0	W	0	1.3	NNW
05/06/2006	20:40	0	N	0	0.4	SW
05/06/2006	20:45	0	---	0	0	---
05/06/2006	20:50	0	NE	0	1.3	NE
05/06/2006	20:55	0	---	0	0	---
05/06/2006	21:00	0	---	0	0	---
05/06/2006	21:05	0	N	0	1.3	NNE
05/06/2006	21:10	0	NNE	0	0.9	NNE
05/06/2006	21:15	0	---	0	0	---
05/06/2006	21:20	0	N	0	1.3	N
05/06/2006	21:25	0	---	0	0	---
05/06/2006	21:30	0	N	0	0.4	N
05/06/2006	21:35	0	---	0	0	---
05/06/2006	21:40	0	---	0	0	---
05/06/2006	21:45	0	---	0	0	---
05/06/2006	21:50	0	---	0	0	---
05/06/2006	21:55	0	---	0	0	---
05/06/2006	22:00	0	NNW	0	0.4	NNW
05/06/2006	22:05	0	---	0	0	---
05/06/2006	22:10	0	---	0	0	---
05/06/2006	22:15	0	---	0	0	---
05/06/2006	22:20	0	---	0	0	---
05/06/2006	22:25	0	---	0	0	---
05/06/2006	22:30	0	NNW	0	0.4	NNW
05/06/2006	22:35	0	NNW	0	0.4	NNW
05/06/2006	22:40	0	---	0	0	---
05/06/2006	22:45	0	---	0	0	---
05/06/2006	22:50	0	NNW	0	0.4	NNW
05/06/2006	22:55	0	NNW	0	0.4	NNW
05/06/2006	23:00	0	---	0	0	---
05/06/2006	23:05	0	---	0	0	---
05/06/2006	23:10	0	NNW	0	0.4	NNW
05/06/2006	23:15	0	---	0	0	---
05/06/2006	23:20	0	NNW	0	0.4	NNW
05/06/2006	23:25	0	---	0	0	---
05/06/2006	23:30	0	---	0	0	---
05/06/2006	23:35	0	WNW	0	0.4	NW
05/06/2006	23:40	0	WNW	0	0.4	WNW
05/06/2006	23:45	0	NNE	0	0.9	NNE
05/06/2006	23:50	0	NE	0	0.4	NE
05/06/2006	23:55	0	---	0	0	---
06/06/2006	00:00	0	---	0	0	---
06/06/2006	00:05	0	---	0	0	---
06/06/2006	00:10	0	---	0	0	---
06/06/2006	00:15	0	E	0	0.9	ENE
06/06/2006	00:20	0	---	0	0	---
06/06/2006	00:25	0	---	0	0	---
06/06/2006	00:30	0	W	0	1.3	NNW
06/06/2006	00:35	0	W	0	0.4	W
06/06/2006	00:40	0	NNE	0	0.9	NNE
06/06/2006	00:45	0	---	0	0	---
06/06/2006	00:50	0	---	0	0	---
06/06/2006	00:55	0	---	0	0	---

Date	Time	Wind Speed	Wind Direction	Wind Run	Hi Speed	Hi Direction
06/06/2006	01:00	0	NE	0	1.3	NE
06/06/2006	01:05	0	NE	0	0.4	NE
06/06/2006	01:10	0	---	0	0	---
06/06/2006	01:15	0	---	0	0	---
06/06/2006	01:20	0	---	0	0	---
06/06/2006	01:25	0	---	0	0	---
06/06/2006	01:30	0	---	0	0	---
06/06/2006	01:35	0	NNE	0	0.4	NNE
06/06/2006	01:40	0	---	0	0	---
06/06/2006	01:45	0	NNE	0	0.9	NNE
06/06/2006	01:50	0	NNE	0	0.4	NNE
06/06/2006	01:55	0	---	0	0	---
06/06/2006	02:00	0	---	0	0	---
06/06/2006	02:05	0	---	0	0	---
06/06/2006	02:10	0	---	0	0	---
06/06/2006	02:15	0	---	0	0	---
06/06/2006	02:20	0	---	0	0	---
06/06/2006	02:25	0	---	0	0	---
06/06/2006	02:30	0	---	0	0	---
06/06/2006	02:35	0	---	0	0	---
06/06/2006	02:40	0	---	0	0	---
06/06/2006	02:45	0	---	0	0	---
06/06/2006	02:50	0	---	0	0	---
06/06/2006	02:55	0	---	0	0	---
06/06/2006	03:00	0	---	0	0	---
06/06/2006	03:05	0	---	0	0	---
06/06/2006	03:10	0	---	0	0	---
06/06/2006	03:15	0	---	0	0	---
06/06/2006	03:20	0	---	0	0	---
06/06/2006	03:25	0	---	0	0	---
06/06/2006	03:30	0	---	0	0	---
06/06/2006	03:35	0	---	0	0	---
06/06/2006	03:40	0	---	0	0	---
06/06/2006	03:45	0	---	0	0	---
06/06/2006	03:50	0	---	0	0	---
06/06/2006	03:55	0	---	0	0	---
06/06/2006	04:00	0	---	0	0	---
06/06/2006	04:05	0	---	0	0	---
06/06/2006	04:10	0	---	0	0	---
06/06/2006	04:15	0	---	0	0	---
06/06/2006	04:20	0	---	0	0	---
06/06/2006	04:25	0	---	0	0	---
06/06/2006	04:30	0	---	0	0	---
06/06/2006	04:35	0	---	0	0	---
06/06/2006	04:40	0	---	0	0	---
06/06/2006	04:45	0	---	0	0	---
06/06/2006	04:50	0	---	0	0	---
06/06/2006	04:55	0	---	0	0	---
06/06/2006	05:00	0	---	0	0	---
06/06/2006	05:05	0	---	0	0	---
06/06/2006	05:10	0	---	0	0	---
06/06/2006	05:15	0	---	0	0	---
06/06/2006	05:20	0	---	0	0	---
06/06/2006	05:25	0	---	0	0	---
06/06/2006	05:30	0	---	0	0	---

Date	Time	Wind Speed	Wind Direction	Wind Run	Hi Speed	Hi Direction
06/06/2006	05:35	0	---	0	0	---
06/06/2006	05:40	0	---	0	0	---
06/06/2006	05:45	0	NNE	0	0.4	NNE
06/06/2006	05:50	0	NNE	0	0.4	NNE
06/06/2006	05:55	0	---	0	0	---
06/06/2006	06:00	0	---	0	0	---
06/06/2006	06:05	0	---	0	0	---
06/06/2006	06:10	0	---	0	0	---
06/06/2006	06:15	0	---	0	0	---
06/06/2006	06:20	0	---	0	0	---
06/06/2006	06:25	0	---	0	0	---
06/06/2006	06:30	0	NNE	0	0.4	NNE
06/06/2006	06:35	0	NNE	0	0.4	NNE
06/06/2006	06:40	0	NE	0	0.9	NE
06/06/2006	06:45	0	NE	0	0.4	NE
06/06/2006	06:50	0	NE	0	0.9	NE
06/06/2006	06:55	0	NE	0	0.4	ENE
06/06/2006	07:00	0	NE	0	0.4	NE
06/06/2006	07:05	0	NE	0	0.4	NE
06/06/2006	07:10	0	ENE	0	0.9	NE
06/06/2006	07:15	0	---	0	0	---
06/06/2006	07:20	0	NNE	0	0.4	NNE
06/06/2006	07:25	0	NNE	0	0.4	NNE
06/06/2006	07:30	0	---	0	0	---
06/06/2006	07:35	0	---	0	0	---
06/06/2006	07:40	0	NE	0	0.4	NE
06/06/2006	07:45	0	N	0	0.9	N
06/06/2006	07:50	0	NE	0	0.9	NE
06/06/2006	07:55	0	---	0	0	---
06/06/2006	08:00	0	NE	0	0.9	N
06/06/2006	08:05	0	NE	0	0.9	NE
06/06/2006	08:10	0	ENE	0	0.9	NE
06/06/2006	08:15	0	NE	0	0.9	NE
06/06/2006	08:20	0	NNE	0	1.8	NE
06/06/2006	08:25	0	N	0	0.9	ENE
06/06/2006	08:30	0	NE	0	0.9	NNE
06/06/2006	08:35	0	N	0	0.9	NNE
06/06/2006	08:40	0	NNE	0	1.3	E
06/06/2006	08:45	0	NE	0	2.2	NNE
06/06/2006	08:50	0	ENE	0	0.4	ENE
06/06/2006	08:55	0	NNE	0	0.9	NNE
06/06/2006	09:00	0	N	0	1.3	NE
06/06/2006	09:05	0	NE	0	1.3	NNE
06/06/2006	09:10	0	NE	0	1.3	NE
06/06/2006	09:15	0	SW	0	1.3	NW
06/06/2006	09:20	0	E	0	0.4	E
06/06/2006	09:25	0	NNE	0	0.4	NNE
06/06/2006	09:30	0	N	0	1.3	N
06/06/2006	09:35	0	NE	0	0.9	NE
06/06/2006	09:40	0	NE	0	1.3	NE
06/06/2006	09:45	0	NE	0	0.9	NE
06/06/2006	09:50	0	E	0	0.4	WNW
06/06/2006	09:55	0	ENE	0	0.9	ENE
06/06/2006	10:00	0	NNE	0	0.4	SE
06/06/2006	10:05	0	N	0	0.9	NNE

Date	Time	Wind Speed	Wind Direction	Wind Run	Hi Speed	Hi Direction
06/06/2006	10:10	0	S	0	0.9	S
06/06/2006	10:15	0	ENE	0	0.9	E
06/06/2006	10:20	0	SW	0	0.4	W
06/06/2006	10:25	0	N	0	1.3	NE
06/06/2006	10:30	0	NNE	0	0.9	NNE
06/06/2006	10:35	0	WSW	0	0.4	WSW
06/06/2006	10:40	0	NNE	0	1.3	SSW
06/06/2006	10:45	0	N	0	1.3	NNW
06/06/2006	10:50	0	NNW	0	0.9	NNW
06/06/2006	10:55	0	ESE	0	0.4	ESE
06/06/2006	11:00	0.4	NE	0.13	2.7	NNE
06/06/2006	11:05	0	NE	0	0.4	NNE