

- Legend**
- Topography**
 - Earthworks
 - Hydrology**
 - River / Stream / Lochs
 - SEPA Flood Mapping (1:200 year)
 - Infrastructure**
 - Building
 - Pylons
 - Rail
 - Road / Track / Footpath / Cycle Route
 - A96 Infrastructure**
 - Access and Junction
 - Structure
 - Key Environmental Sites**
 - Ancient Woodlands
 - Battlefield Sites
 - Conservation Areas
 - Geological Conservation Review Sites
 - Historic Gardens and Designed Landscapes
 - Listed Buildings
 - Ramsar Site
 - SAC
 - Scheduled Monuments
 - SPA
 - SSSI

Notes:
 1. Contours shown at 5m intervals.

0	05/03/15	Issued for information.	SA	SC	DB	EHB
Rev	Rev. Date	Purpose of revision	Drawn	Checked	Reviewed	Approved

JACOBS
 95 Bothwell St, Glasgow, G2 7HX
 Tel: +44(0)141 243 8000 Fax: +44(0)141 226 3109
 www.jacobs.com

Client

 TRANSPORT SCOTLAND
 COMBHAL ALBA

Project

 A96
 DUALLING
 INVERNESS TO ABERDEEN

Drawing title
**KEY CONSTRAINT PLANS
 SHEET 1 OF 37**

Drawing status
FOR INFORMATION

Scale	1:10,000 @ A1	DO NOT SCALE
Jacobs No.	B1557621	
Drawing number	B1557621/2601/001	Rev
		0

This drawing is not to be used in whole or part other than for the intended purpose and project as defined on this drawing. Refer to the contract for full terms and conditions.

File: P:\Data3\B1557621 - A96 PES\A96 CAD\2600 - A96 Constraint Mapping\B1557621-2601-001 Rev 0.dwg Date: Apr 14, 2015 - 3:07pm Plotted by: Ffindit
 Reproduced by permission of Ordnance Survey on behalf of HMSO.
 © Crown copyright and database right 2015. All rights reserved.
 Ordnance Survey Licence number 100046668



- Legend**
- Topography**
 - Earthworks
 - Hydrology**
 - River / Stream / Lochs
 - SEPA Flood Mapping (1:200 year)
 - Infrastructure**
 - Building
 - Pylons
 - Rail
 - Road / Track / Footpath / Cycle Route
 - A96 Infrastructure**
 - Access and Junction
 - Structure
 - Key Environmental Sites**
 - Ancient Woodlands
 - Battlefield Sites
 - Conservation Areas
 - Geological Conservation Review Sites
 - Historic Gardens and Designed Landscapes
 - Listed Buildings
 - Ramsar Site
 - SAC
 - Scheduled Monuments
 - SPA
 - SSSI

Notes:
 1. Contours shown at 5m intervals.

File: P:\Data\31\B1557621 - A96 PE\A96 CAD\2600 - A96 Constraint Mapping\2601 - A96 Constraint Mapping\B1557621-2601-002 Rev 0.dwg Date: Apr 16, 2015 - 3:28pm. Plotted by: henderst.

For continuation see drawing number B1557621/2601/001

For continuation see drawing number B1557621/2601/003

Reproduced by permission of Ordnance Survey on behalf of HMSO.
 © Crown copyright and database right 2015. All rights reserved.
 Ordnance Survey Licence number 100046666.

Rev	Rev. Date	Purpose of revision	SA	SC	DB	EHL
0	05/03/15	Issued for information.				



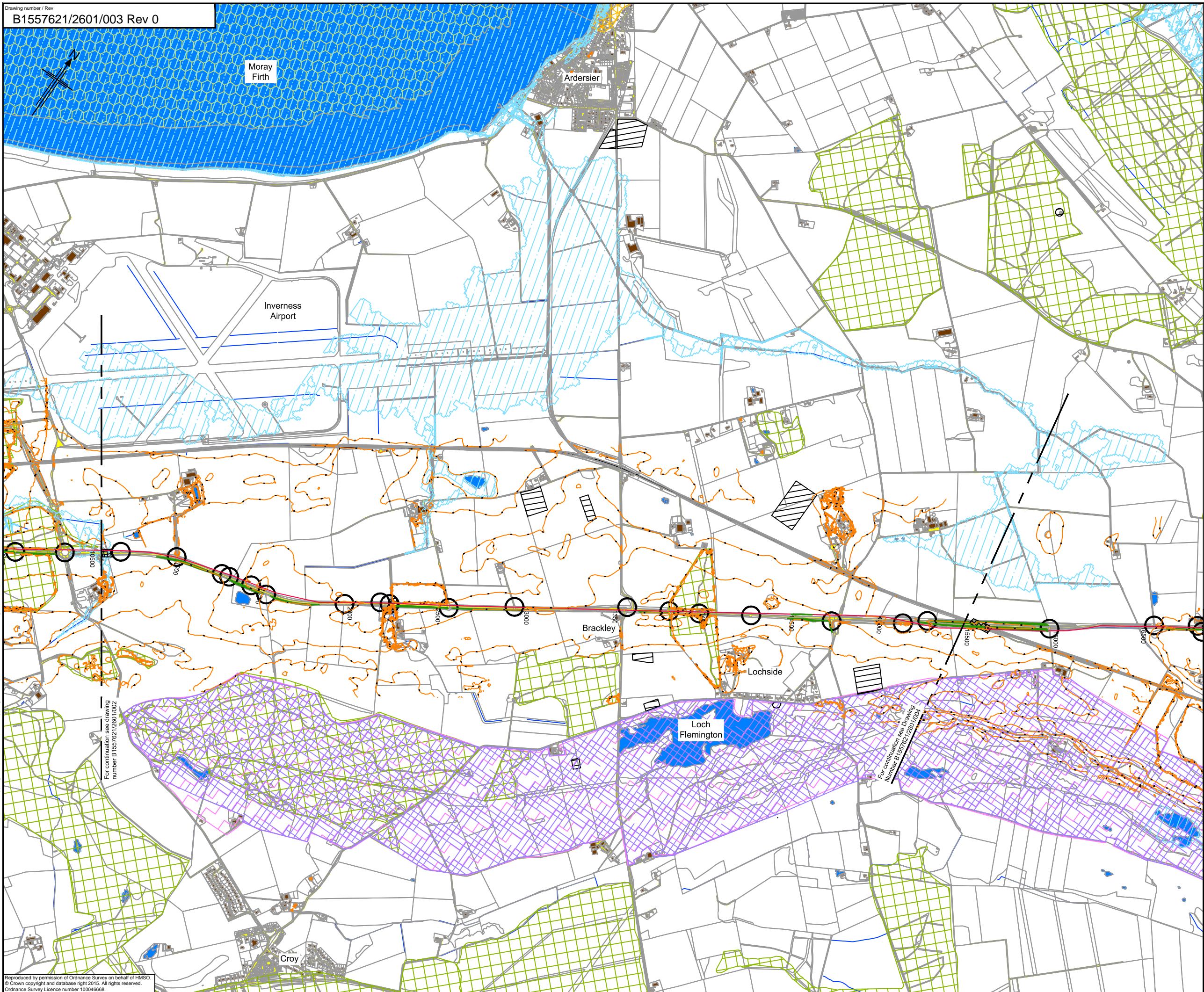
95 Bothwell St, Glasgow, G2 7HX
 Tel: +44(0)141 243 8000 Fax: +44(0)141 226 3109
 www.jacobs.com



KEY CONSTRAINT PLANS
SHEET 2 OF 37

Drawing status			FOR INFORMATION		
Scale	1:10,000 @ A1	DO NOT SCALE			
Jacobs No.	B1557621				
Drawing number	B1557621/2601/002	Rev	0		

This drawing is not to be used in whole or part other than for the intended purpose and project as defined on this drawing. Refer to the contract for full terms and conditions.



- Legend**
- Topography**
 - Earthworks
 - Hydrology**
 - River / Stream / Lochs
 - SEPA Flood Mapping (1:200 year)
 - Infrastructure**
 - Building
 - Pylons
 - Rail
 - Road / Track / Footpath / Cycle Route
 - A96 Infrastructure**
 - Access and Junction
 - Structure
 - Key Environmental Sites**
 - Ancient Woodlands
 - Battlefield Sites
 - Conservation Areas
 - Geological Conservation Review Sites
 - Historic Gardens and Designed Landscapes
 - Listed Buildings
 - Ramsar Site
 - SAC
 - Scheduled Monuments
 - SPA
 - SSSI

Notes:
 1. Contours shown at 5m intervals.

Rev	Rev. Date	Purpose of revision	SA	SC	DB	EHL
0	05/03/15	Issued for information.				



95 Bothwell St, Glasgow, G2 7HX
 Tel: +44(0)141 243 8000 Fax: +44(0)141 226 3109
 www.jacobs.com

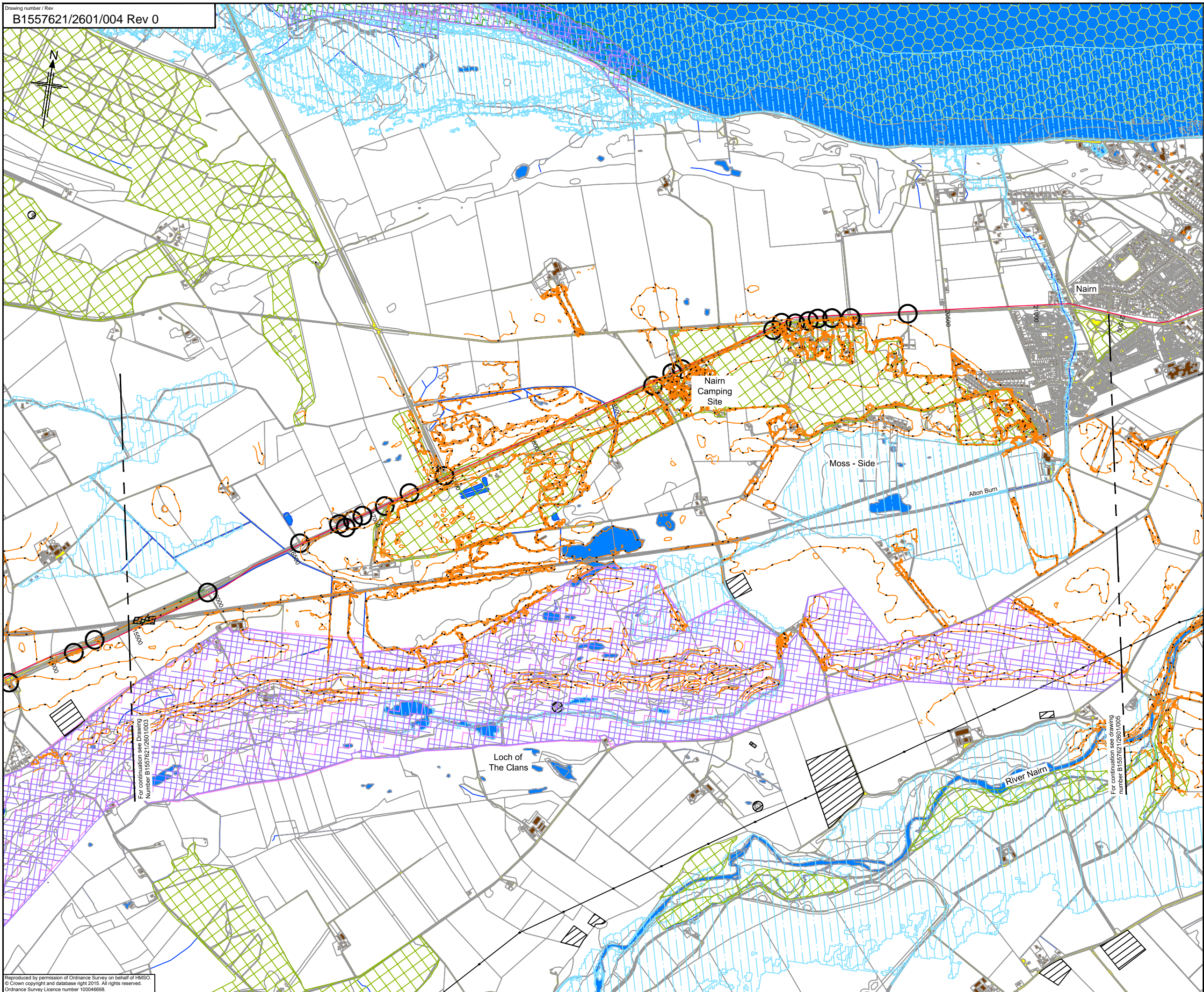


**KEY CONSTRAINT PLANS
 SHEET 3 OF 37**

Drawing status		
FOR INFORMATION		
Scale	1:10,000 @ A1	DO NOT SCALE
Jacobs No.	B1557621	
Drawing number	B1557621/2601/003	Rev 0

File: P:\Data3\B1557621 - A96 PES\A96 CAD\2600 - A96 Constraint Mapping\2601 - Constraints Mapping\B1557621-2601-003 Rev 0.dwg Date: Apr 16, 2015 - 3:39pm. Plotted by: henderst.

Reproduced by permission of Ordnance Survey on behalf of HMSO.
 © Crown copyright and database right 2015. All rights reserved.
 Ordnance Survey Licence number 100046668.



Legend

Topography

- Earthworks

Hydrology

- River / Stream / Lochs
- SEPA Flood Mapping (1:200 year)

Infrastructure

- Building
- Pylons
- Rail
- Road / Track / Footpath / Cycle Route

A96 Infrastructure

- Access and Junction
- Structure

Key Environmental Sites

- Ancient Woodlands
- Battlefield Sites
- Conservation Areas
- Geological Conservation Review Sites
- Historic Gardens and Designed Landscapes
- Listed Buildings
- Ramsar Site
- SAC
- Scheduled Monuments
- SPA
- SSSI

Notes:

- Contours shown at 5m intervals.

0	05/03/15	Issued for information.	SA	SC	DB	EHL
Rev	Rev. Date	Purpose of revision	Drawn	Checked	Reviewed	Approved

JACOBS
 95 Bothwell St, Glasgow, G2 7HX
 Tel: +44(0)141 243 8000 Fax: +44(0)141 226 3109
 www.jacobs.com

Client

Project

Drawing title

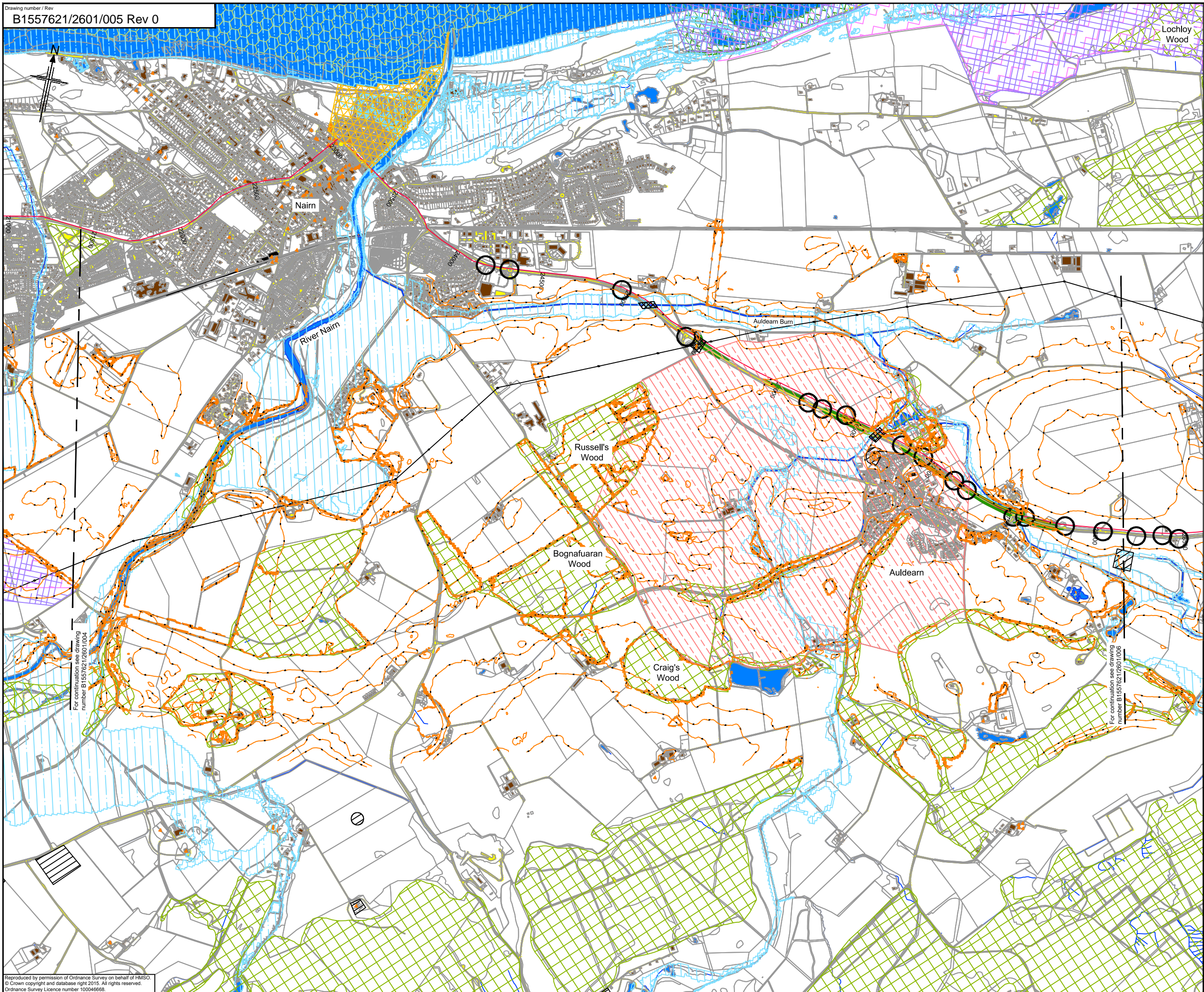
**KEY CONSTRAINT PLANS
 SHEET 4 OF 37**

Drawing status: **FOR INFORMATION**

Scale	1:10,000 @ A1	DO NOT SCALE
Jacobs No.	B1557621	
Drawing number	B1557621/2601/004	Rev
		0

This drawing is not to be used in whole or part other than for the intended purpose and project as defined on this drawing. Refer to the contract for full terms and conditions.

File: P:\Data\31B1557621 - A96 PES\A96 CAD\2600 - A96 Constraint Mapping\B1557621-2601-004 Rev 0.dwg Date: Apr 16, 2015 - 3:50pm Plotted by: henderst
 Reproduced by permission of Ordnance Survey on behalf of HMSO.
 © Crown copyright and database right 2015. All rights reserved.
 Ordnance Survey Licence number 100046666.



- Legend**
- Topography**
 - Earthworks
 - Hydrology**
 - River / Stream / Lochs
 - SEPA Flood Mapping (1:200 year)
 - Infrastructure**
 - Building
 - Pylons
 - Rail
 - Road / Track / Footpath / Cycle Route
 - A96 Infrastructure**
 - Access and Junction
 - Structure
 - Key Environmental Sites**
 - Ancient Woodlands
 - Battlefield Sites
 - Conservation Areas
 - Geological Conservation Review Sites
 - Historic Gardens and Designed Landscapes
 - Listed Buildings
 - Ramsar Site
 - SAC
 - Scheduled Monuments
 - SPA
 - SSSI

Notes:
 1. Contours shown at 5m intervals.

0	05/03/15	Issued for information.	SA	SC	DB	EHL
Rev	Rev. Date	Purpose of revision	Drawn	Checked	Reviewed	Approved



**KEY CONSTRAINT PLANS
 SHEET 5 OF 37**

Drawing status: **FOR INFORMATION**

Scale: 1:10,000 @ A1 **DO NOT SCALE**

Jacobs No: B1557621

Drawing number: **B1557621/2601/005**

Rev: **0**

File: P:\Data\31557621 - A96 PES\A96 CAD\2600 - A96 Constraint Mapping\2601 - A96 Constraint Mapping\2601 - A96 Constraint Mapping.dwg Date: Apr 16, 2015 - 1:57pm. Plotted by: henderst

Reproduced by permission of Ordnance Survey on behalf of HMSO.
 © Crown copyright and database right 2015. All rights reserved.
 Ordnance Survey Licence number 100046666.

This drawing is not to be used in whole or part other than for the intended purpose and project as defined on this drawing. Refer to the contract for full terms and conditions.