

**Legend**

**Topography**

- Earthworks

**Hydrology**

- River / Stream / Lochs
- SEPA Flood Mapping (1:200 year)

**Infrastructure**

- Building
- Pylons
- Rail
- Road / Track / Footpath / Cycle Route

**A96 Infrastructure**

- Access and Junction
- Structure

**Key Environmental Sites**

- Ancient Woodlands
- Battlefield Sites
- Conservation Areas
- Geological Conservation Review Sites
- Historic Gardens and Designed Landscapes
- Listed Buildings
- Ramsar Site
- SAC
- Scheduled Monuments
- SPA
- SSSI

**Notes:**

- Contours shown at 5m intervals.

Rev	Rev. Date	Purpose of revision	Drawn	Checked	Reviewed	Approved
0	05/03/15	Issued for information.	SA	SC	DB	EHL

**JACOBS**  
 95 Bothwell St, Glasgow, G2 7HX  
 Tel: +44(0)141 243 8000 Fax: +44(0)141 226 3109  
 www.jacobs.com

**Client**

**Project**

**Drawing title**

**KEY CONSTRAINT PLANS  
 SHEET 19 OF 37**

**Drawing status**

**FOR INFORMATION**

Scale	1:10,000 @ A1	DO NOT SCALE
Jacobs No.	B1557621	
Drawing number	<b>B1557621/2601/019</b>	Rev
		<b>0</b>

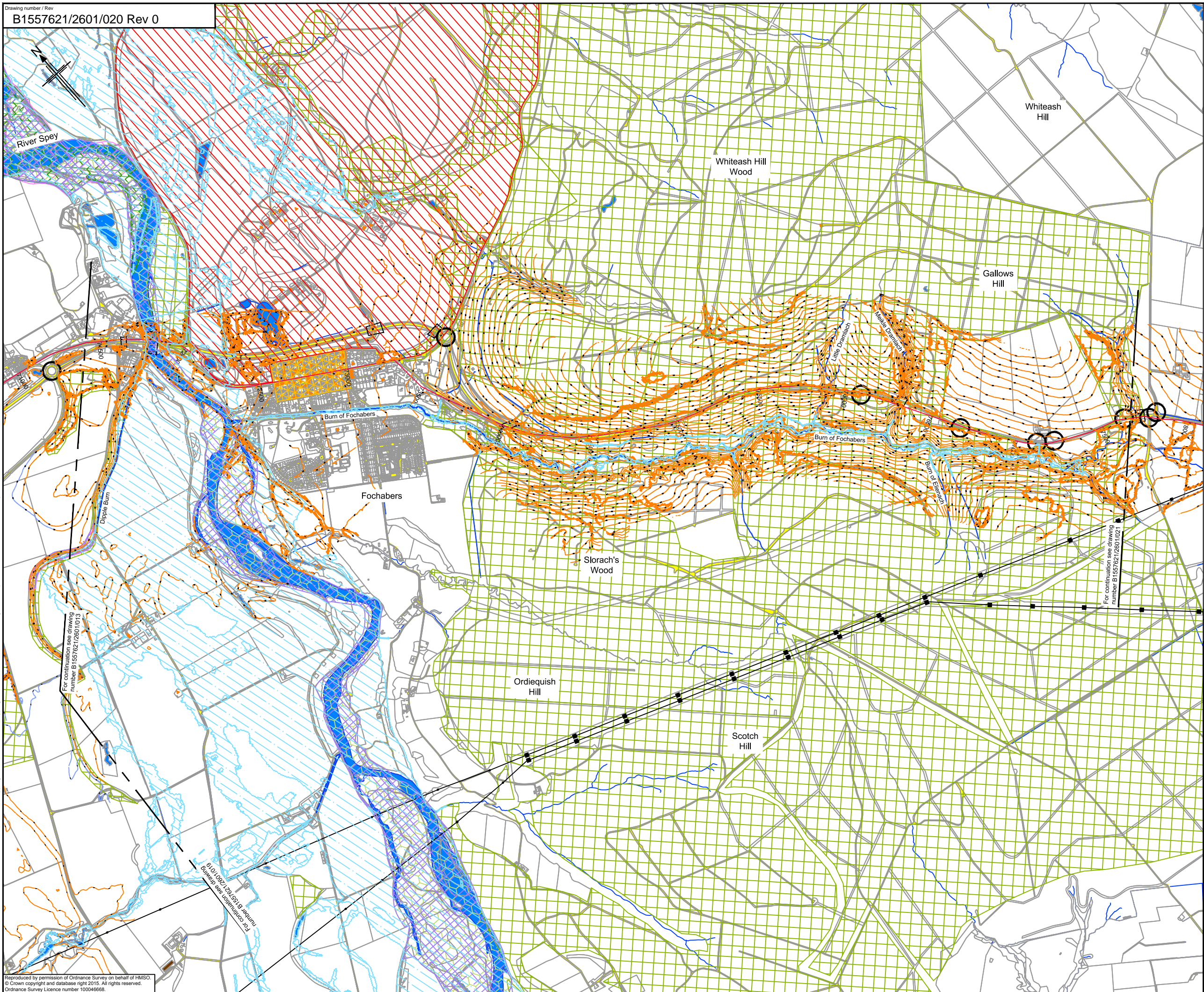
This drawing is not to be used in whole or part other than for the intended purpose and project as defined on this drawing. Refer to the contract for full terms and conditions.

File: P:\Data\B1557621 - A96 PES\A96 CAD\2600 - A96 Constraint Mapping\B1557621-2601-019 Rev 0.dwg Date: Apr 15, 2015 - 11:31am Plotted by: henderst  
 Reproduced by permission of Ordnance Survey on behalf of HMSO.  
 © Crown copyright and database right 2015. All rights reserved.  
 Ordnance Survey Licence number 100046666.

For continuation see Drawing  
 Number B1557621/2601/016

For continuation see Drawing  
 Number B1557621/2601/020





- Legend**
- Topography**
    - Green grid: Earthworks
  - Hydrology**
    - Blue line: River / Stream / Lochs
    - Blue hatched: SEPA Flood Mapping (1:200 year)
  - Infrastructure**
    - Black rectangle: Building
    - Black line: Pylons
    - Black line: Rail
    - Yellow line: Road / Track / Footpath / Cycle Route
  - A96 Infrastructure**
    - Circle with cross: Access and Junction
    - Square with cross: Structure
  - Key Environmental Sites**
    - Green hatched: Ancient Woodlands
    - Red hatched: Battlefield Sites
    - Orange hatched: Conservation Areas
    - Pink hatched: Geological Conservation Review Sites
    - Red hatched: Historic Gardens and Designed Landscapes
    - Triangle: Listed Buildings
    - Green hatched: Ramsar Site
    - Yellow hatched: SAC
    - Black hatched: Scheduled Monuments
    - Green hatched: SPA
    - Purple hatched: SSSI

**Notes:**  
 1. Contours shown at 5m intervals.

File: P:\Data\31557621 - A96 PES\A96 CAD\2600 - A96 Constraint Mapping\2601 - Constraints Mapping\B1557621-2601-020 Rev 0.dwg Date: Apr 15, 2015 - 11:44am Plotted by: hendert

For continuation see drawing number B1557621/2601/010

For continuation see drawing number B1557621/2601/021

Rev	Rev. Date	Purpose of revision	SA	SC	DB	EHL
0	05/03/15	Issued for information.				



95 Bothwell St, Glasgow, G2 7HX  
 Tel: +44(0)141 243 8000 Fax: +44(0)141 226 3109  
 www.jacobs.com

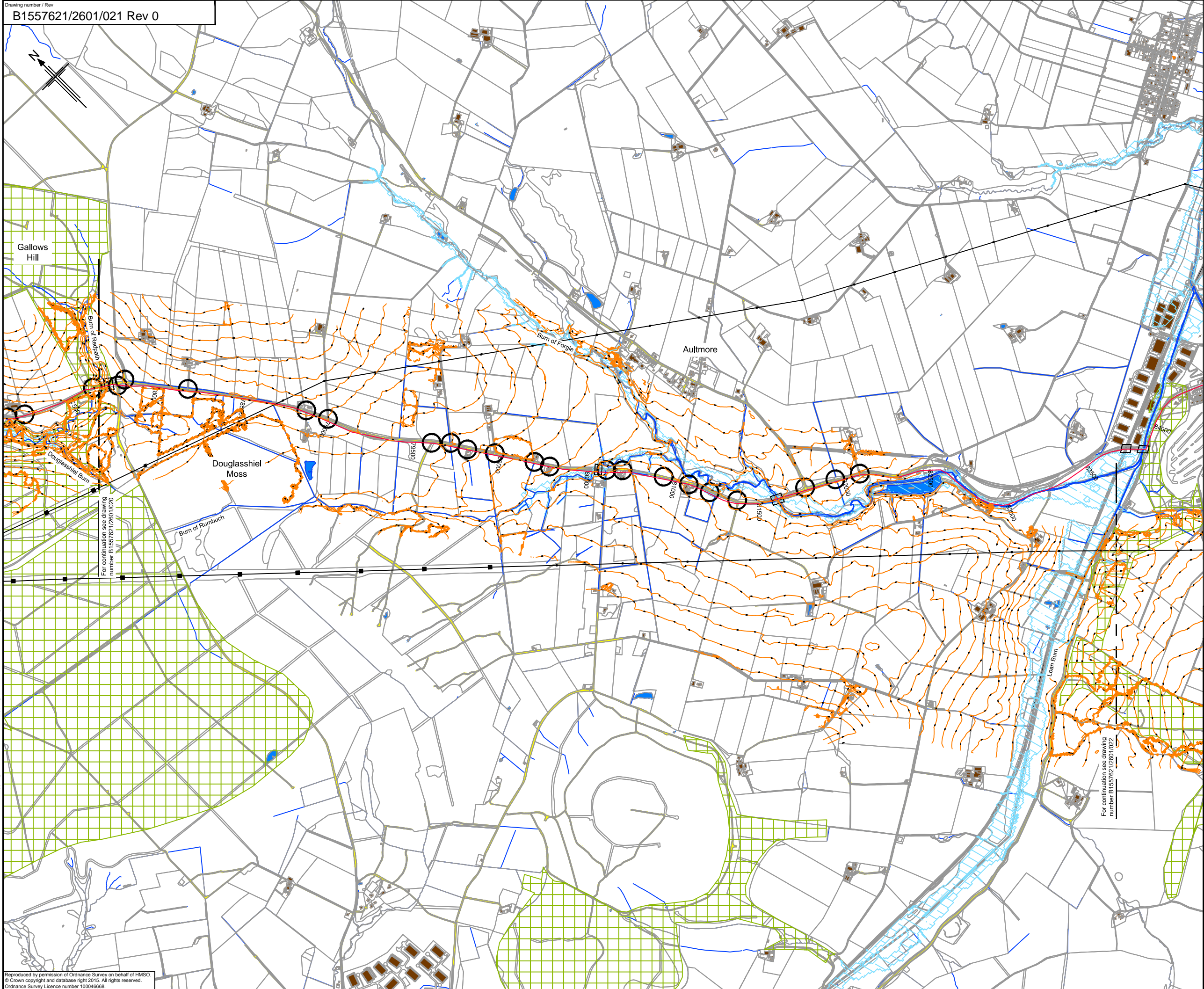


**KEY CONSTRAINT PLANS  
 SHEET 20 OF 37**

Drawing status: <b>FOR INFORMATION</b>		
Scale:	1:10,000 @ A1	DO NOT SCALE
Jacobs No:	B1557621	
Drawing number:	B1557621/2601/020	Rev: 0

Reproduced by permission of Ordnance Survey on behalf of HMSO.  
 © Crown copyright and database right 2015. All rights reserved.  
 Ordnance Survey Licence number 100046666.





**Legend**

**Topography**

- Earthworks

**Hydrology**

- River / Stream / Lochs
- SEPA Flood Mapping (1:200 year)

**Infrastructure**

- Building
- Pylons
- Rail
- Road / Track / Footpath / Cycle Route

**A96 Infrastructure**

- Access and Junction
- Structure

**Key Environmental Sites**

- Ancient Woodlands
- Battlefield Sites
- Conservation Areas
- Geological Conservation Review Sites
- Historic Gardens and Designed Landscapes
- Listed Buildings
- Ramsar Site
- SAC
- Scheduled Monuments
- SPA
- SSSI

**Notes:**

- Contours shown at 5m intervals.

File: P:\Data\31557621 - A96 PES\A96 CAD\2600 - A96 Constraint Mapping\B1557621-2601-021 Rev 0.dwg Date: Apr 15, 2015 - 11:48am Plotted by: hendest  
 Reproduced by permission of Ordnance Survey on behalf of HMSO.  
 © Crown copyright and database right 2015. All rights reserved.  
 Ordnance Survey Licence number 100046666.

Rev	Rev. Date	Purpose of revision	SA	SC	DB	EHL
0	05/03/15	Issued for information.				

**JACOBS**  
 95 Bothwell St, Glasgow, G2 7HX  
 Tel:+44(0)141 243 8000 Fax:+44(0)141 226 3109  
 www.jacobs.com

Client

TRANSPORT SCOTLAND  
 CÒRRAIDH ALBA

Project

A96  
 DUALLING  
 BUSINESS TO BUSINESS

Drawing title

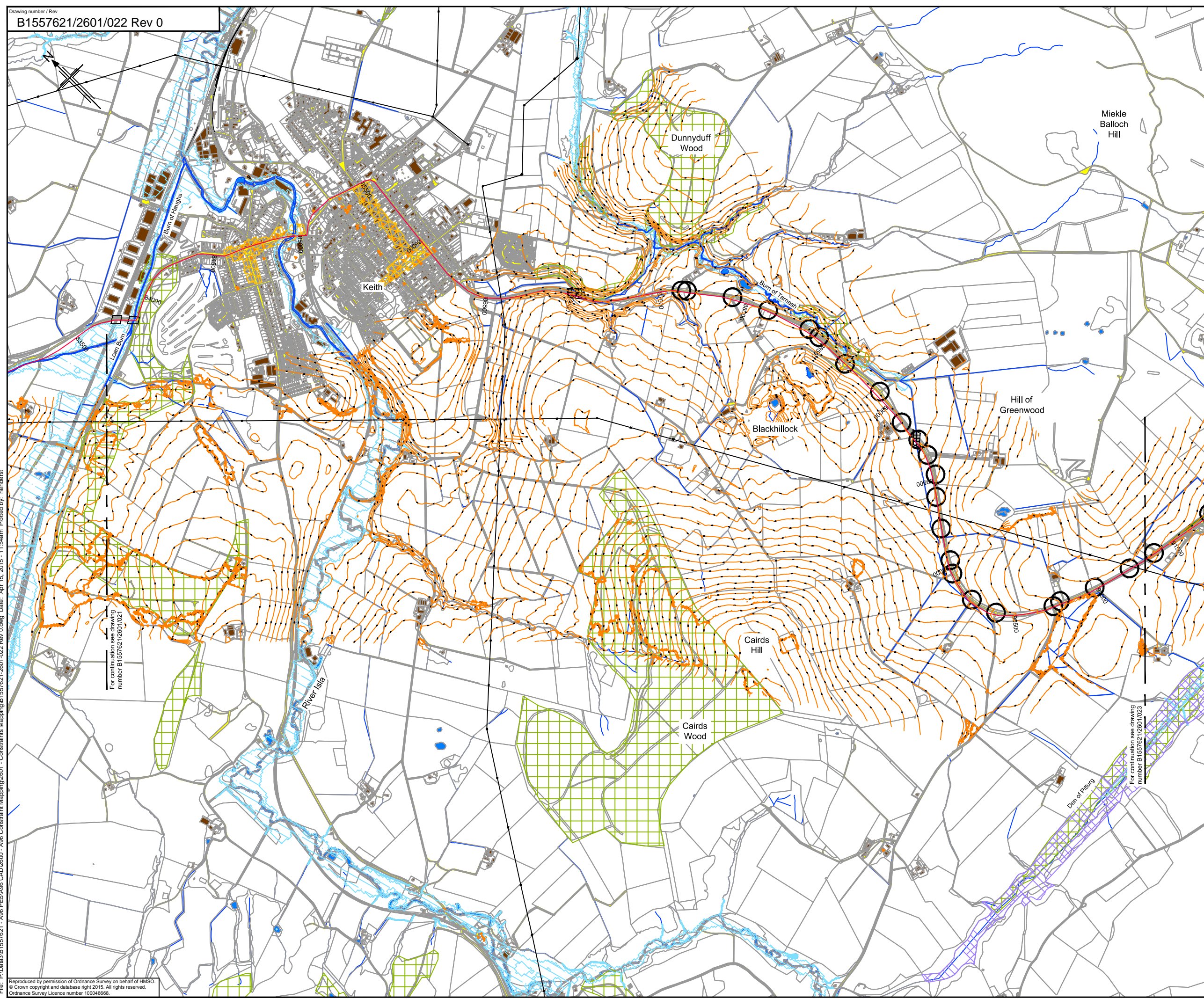
**KEY CONSTRAINT PLANS  
 SHEET 21 OF 37**

Drawing status: **FOR INFORMATION**

Scale	1:10,000 @ A1	DO NOT SCALE
Jacobs No.	B1557621	
Drawing number	<b>B1557621/2601/021</b>	Rev
		<b>0</b>

This drawing is not to be used in whole or part other than for the intended purpose and project as defined on this drawing. Refer to the contract for full terms and conditions.





**Legend**

**Topography**

- Earthworks

**Hydrology**

- River / Stream / Lochs
- SEPA Flood Mapping (1:200 year)

**Infrastructure**

- Building
- Pylons
- Rail
- Road / Track / Footpath / Cycle Route

**A96 Infrastructure**

- Access and Junction
- Structure

**Key Environmental Sites**

- Ancient Woodlands
- Battlefield Sites
- Conservation Areas
- Geological Conservation Review Sites
- Historic Gardens and Designed Landscapes
- Listed Buildings
- Ramsar Site
- SAC
- Scheduled Monuments
- SPA
- SSSI

**Notes:**

- Contours shown at 5m intervals.

File: P:\Data3\B1557621 - A96 PES\A96 CAD\2600 - A96 Constraint Mapping\2601 - Constraints Mapping\B1557621-2601-022 Rev 0.dwg Date: Apr 15, 2015 - 11:54am Plotted by: hendest

For continuation see drawing number B1557621/2601/021

For continuation see drawing number B1557621/2601/023

Rev	Rev. Date	Purpose of revision	SA	SC	DB	EHL
0	05/03/15	Issued for information.				



95 Bothwell St, Glasgow, G2 7HX  
 Tel: +44(0)141 243 8000 Fax: +44(0)141 226 3109  
 www.jacobs.com



**KEY CONSTRAINT PLANS  
 SHEET 22 OF 37**

Drawing status			FOR INFORMATION		
Scale	1:10,000 @ A1	DO NOT SCALE			
Jacobs No.	B1557621				
Drawing number	B1557621/2601/022	Rev	0		

This drawing is not to be used in whole or part other than for the intended purpose and project as defined on this drawing. Refer to the contract for full terms and conditions.