

- Legend:
- Existing Core Paths
 - Existing National Cycle Networks
 - The Dava Way
 - Moray Coast Trail
 - Speyside Way
 - The Isla Way
 - The Fish Wives Path
 - Existing Local Routes

For continuation see drawing number B1557621/1101/009

For continuation see drawing number B1557621/1101/011

For continuation see drawing number B1557621/1101/017

File: P:\Data3\B1557621 - A96 PES\A96 CAD\1100 - A96 Kerbs, Footways and Paved Areas\1101 - Existing NMU Provision\B1557621-1101-010 Rev 0.dwg Date: Mar 08, 2015 - 2:00pm Plotted by: atkins

Reproduced by permission of Ordnance Survey on behalf of HMSO.
 © Crown copyright and database right 2015. All rights reserved.
 Ordnance Survey Licence number 100046668.

Rev	Rev. Date	Purpose of revision	Drawn	Checked	Reviewed	Approved
0	04/03/15	Issued for information.	SA	SC	DB	EHB

JACOBS
 85 Bothwell St, Glasgow, G2 7HX
 Tel:+44(0)141 243 8200 Fax:+44(0)141 226 3109
 www.jacobs.com

Client



TRANSPORT SCOTLAND
 COMHDHAL ALBA

Project



ASS DUALLING
 INVERNESS TO ABERDEEN

Drawing title

**EXISTING NMU PROVISION
 SHEET 10 OF 37**

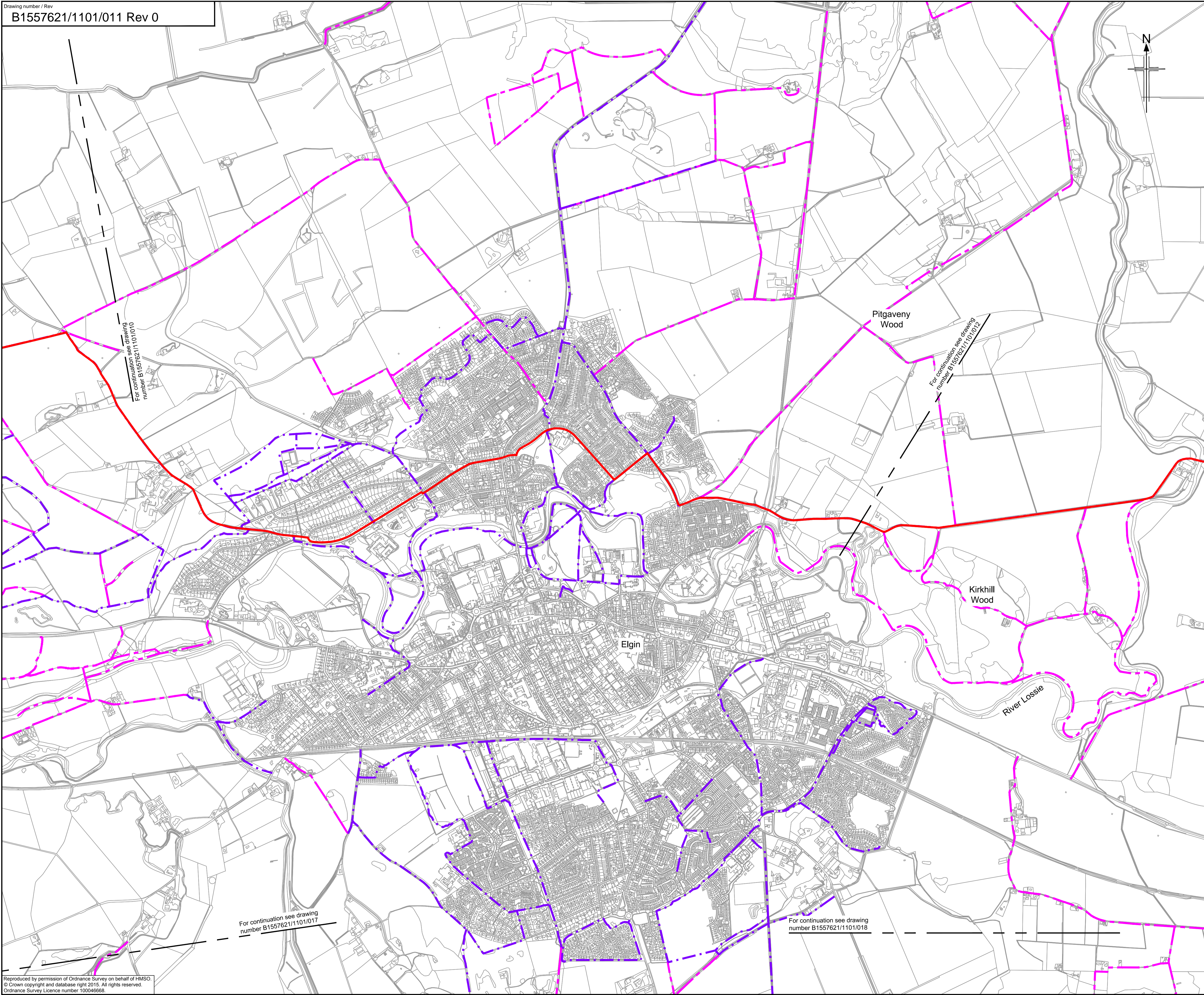
Drawing status

FOR INFORMATION

Scale 1:10,000 @ A1 DO NOT SCALE

Jacobs No. B1557621
 Drawing number **B1557621/1101/010** Rev **0**

This drawing is not to be used in whole or part other than for the intended purpose and project as defined on this drawing. Refer to the contract for full terms and conditions.



- Legend:
- - - Existing Core Paths
 - Existing National Cycle Networks
 - The Dava Way
 - Moray Coast Trail
 - Speyside Way
 - The Isla Way
 - The Fish Wives Path
 - - - Existing Local Routes

For continuation see drawing number B1557621/1101/010

For continuation see drawing number B1557621/1101/012

For continuation see drawing number B1557621/1101/017

For continuation see drawing number B1557621/1101/018

0	04/03/15	Issued for information.	SA	SC	DB	EHB
Rev	Rev. Date	Purpose of revision	Drawn	Checked	Reviewed	Approved

JACOBS
 55 Bothwell St, Glasgow, G2 7HX
 Tel:+44(0)141 225 8000 Fax:+44(0)141 226 3109
 www.jacobs.com



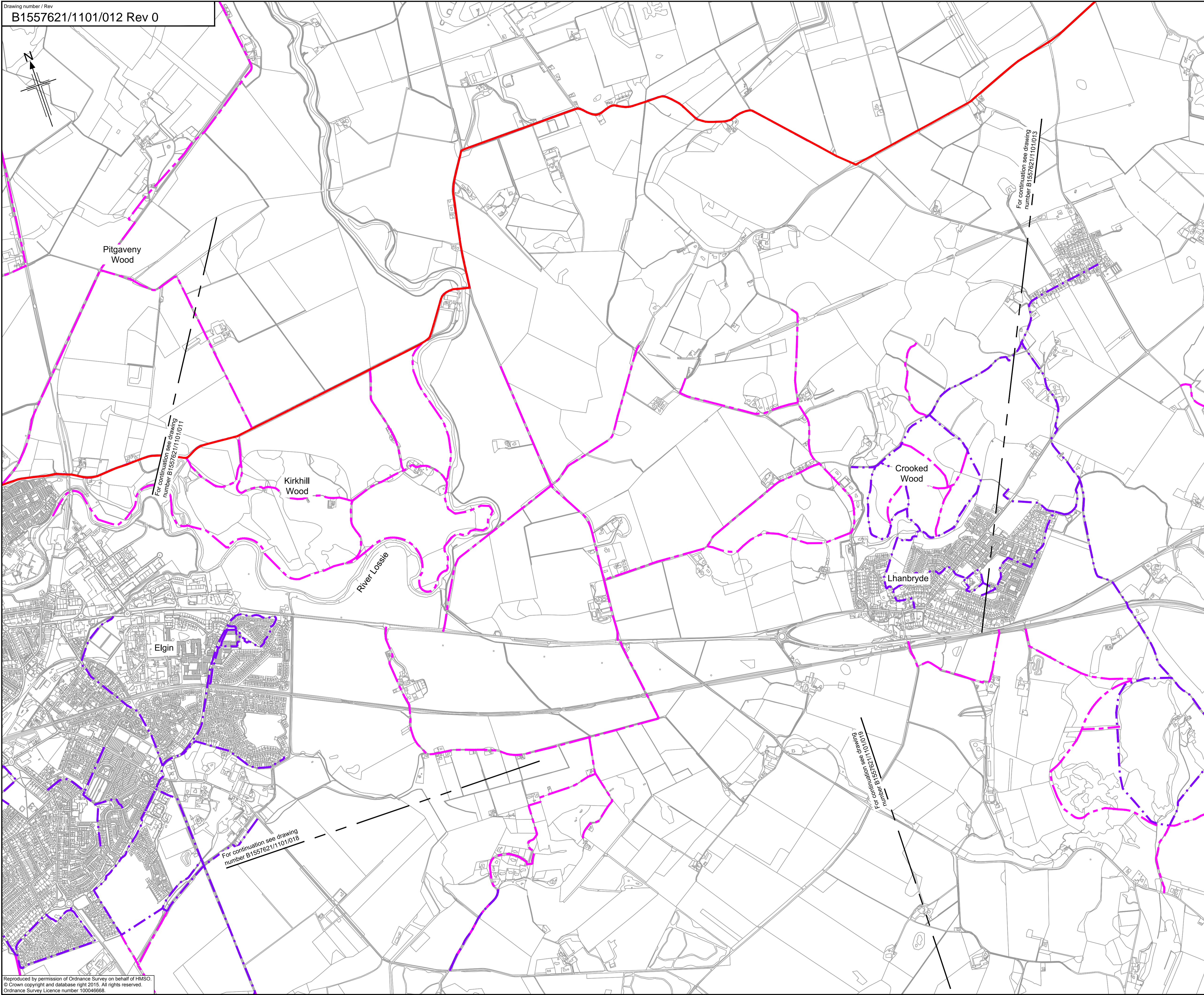
Client
 Project
 Drawing title

**EXISTING NMU PROVISION
 SHEET 11 OF 37**

Drawing status: **FOR INFORMATION**
 Scale: 1:10,000 @ A1 **DO NOT SCALE**
 Jacobs No. B1557621

Drawing number: **B1557621/1101/011** Rev: **0**

This drawing is not to be used in whole or part other than for the intended purpose and project as defined on this drawing. Refer to the contract for full terms and conditions.



- Legend:**
- - - Existing Core Paths
 - Existing National Cycle Networks
 - - - The Dava Way
 - - - Moray Coast Trail
 - - - Speyside Way
 - - - The Isla Way
 - - - The Fish Wives Path
 - - - Existing Local Routes

File: P:\Data3\B1557621 - A96 PES\A96 CAD\1100 - A96 Kerbs, Footways and Paved Areas\1101 - Existing NMU Provision\B1557621-1101-012 Rev 0.dwg Date: Mar 06, 2015 - 2:00pm Plotted by: atkens

Reproduced by permission of Ordnance Survey on behalf of HMSO.
 © Crown copyright and database right 2015. All rights reserved.
 Ordnance Survey Licence number 100046668.

Rev	Rev. Date	Purpose of revision	SA	SC	DB	EHB
0	04/03/15	Issued for information.				

JACOBS
 55 Bothwell St, Glasgow, G2 7HX
 Tel:+44(0)141 243 8000 Fax:+44(0)141 226 3109
 www.jacobs.com

Client



TRANSPORT SCOTLAND
 COMHDHAIL ALBA

Project



ASS DUALLING
 INVERNESS TO ABERDEEN

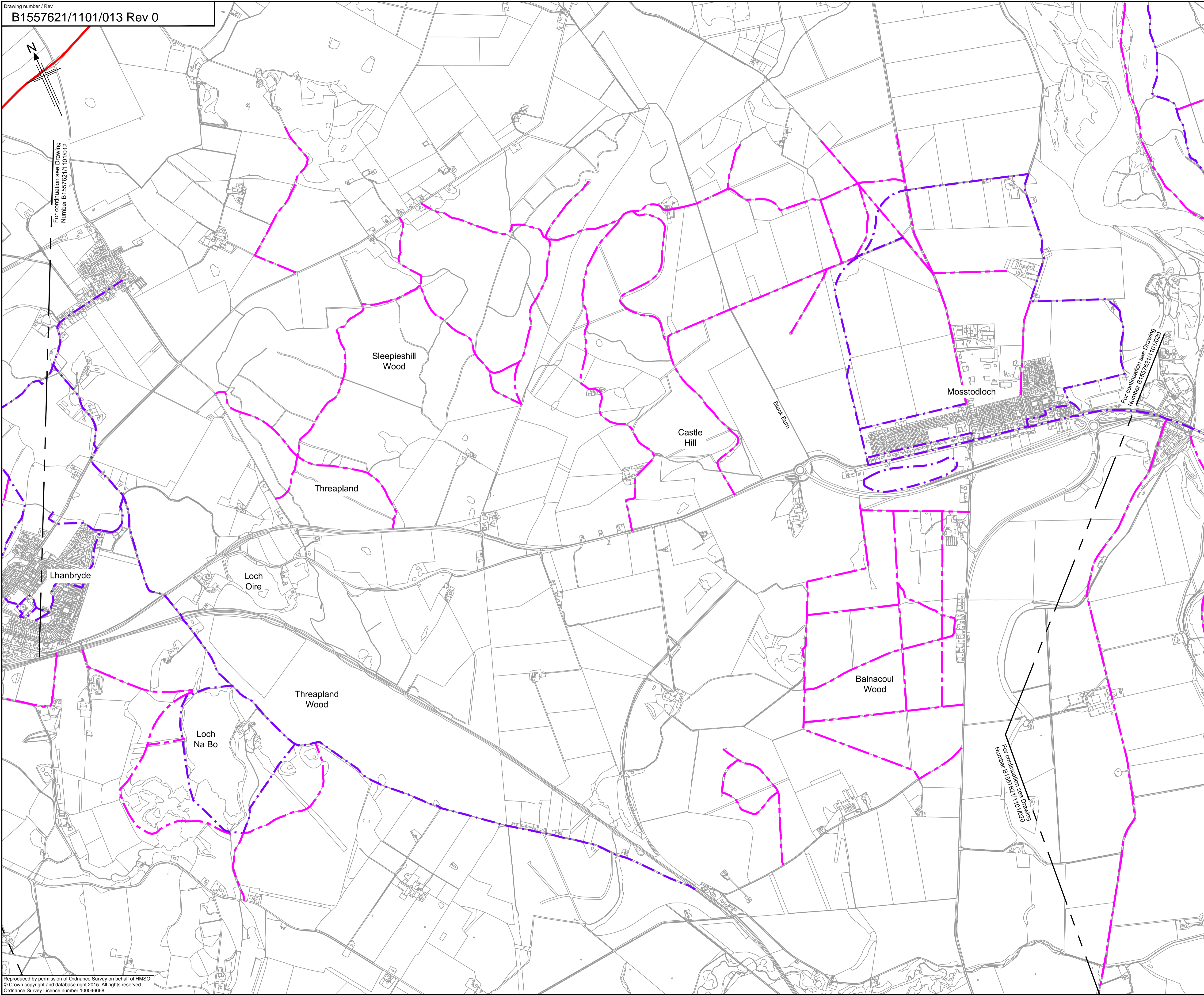
Drawing title

**EXISTING NMU PROVISION
 SHEET 12 OF 37**

Drawing status: **FOR INFORMATION**

Scale	1:10,000 @ A1	DO NOT SCALE
Jacobs No.	B1557621	
Drawing number	B1557621/1101/012	Rev
		0

This drawing is not to be used in whole or part other than for the intended purpose and project as defined on this drawing. Refer to the contract for full terms and conditions.



- Legend:**
- - - Existing Core Paths
 - Existing National Cycle Networks
 - - - The Dava Way
 - - - Moray Coast Trail
 - - - Speyside Way
 - - - The Isla Way
 - - - The Fish Wives Path
 - - - Existing Local Routes

File: P:\Data3\B1557621 - A96 PESVA96 CAD\1100 - A96 Kerbs, Footways and Paved Areas\1101 - Existing NMU Provision\B1557621-1101-013 Rev 0.dwg Date: Mar 06, 2015 - 2:00pm Plotted by: atkens
 © Crown copyright and database right 2015. All rights reserved.
 Ordnance Survey Licence number 100046668.

0	04/03/15	Issued for information.	SA	SC	DB	EHB
Rev	Rev. Date	Purpose of revision	Drawn	Checked	Reviewed	Approved

JACOBS
 85 Bothwell St, Glasgow, G2 7HX
 Tel:+44(0)141 243 8000 Fax:+44(0)141 226 3109
 www.jacobs.com

Client



TRANSPORT SCOTLAND
 COMHDHAIL ALBA

Project



ASS DUALLING
 INVERNESS TO ABERDEEN

Drawing title

**EXISTING NMU PROVISION
 SHEET 13 OF 37**

Drawing status

FOR INFORMATION

Scale	1:10,000 @ A1	DO NOT SCALE
Jacobs No.	B1557621	
Drawing number	B1557621/1101/013	Rev
		0

This drawing is not to be used in whole or part other than for the intended purpose and project as defined on this drawing. Refer to the contract for full terms and conditions.