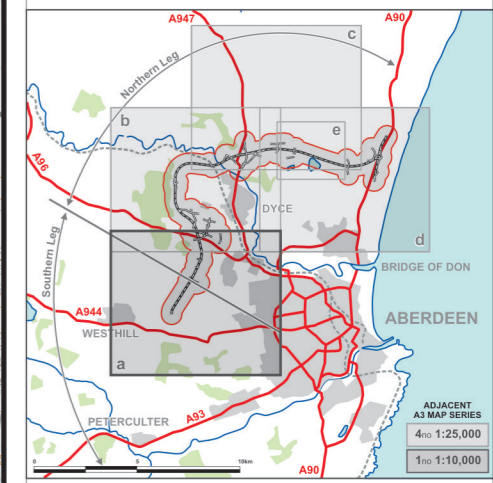


Continued on Sheet 2 of 5 (Figure 9.2b)

FIGURE 9.2a



- LEGEND**
- Proposed Route (Engineering Profile 04/05/07)
  - Watercourses
  - Direction of Flow
  - Waterbody
  - Hydrological Feature Boundary
  - Natural Catchment Boundary / Dissected Catchment Boundary
  - Spring Location
  - Private Groundwater Well Supply
  - Depressed Invert Culvert
  - Network Culvert
  - Stream Re-Alignment
  - Watercourse Lost (to Stream Re-Alignment)
  - Watercourse Lost (to Pre-Earthworks Drainage)
  - Watercourse/Feature Lost (Filled In)
  - Bridge
  - Aqueduct
  - SEPA Flow Gauges
  - SEPA Spot Gauging Location
  - JACOBS Spot Gauging Location
  - SEPA Rain Gauge (Daily Recording and Tipping Bucket)

**JE JACOBS**  
 95 Bothwell Street, Glasgow, G2 7HX, UK  
 Tel: 0141 204 2511 Fax: 0141 226 3109  
 www.jacobsbattle.com

Client	Aberdeen Western Peripheral Route	
Project	Aberdeen Western Peripheral Route Environmental Statement, Part B - Northern Leg	
Title	Surface Water Hydrology Sheet 1 of 5	
Drawing Status	FINAL	
JB No.	0010332	
Figure No.	FIGURE 9.2a	Revisions
Scale	1:25,000	Date July 2007
Drawn	GMcA	Checked
		LB
		Approved
		SH

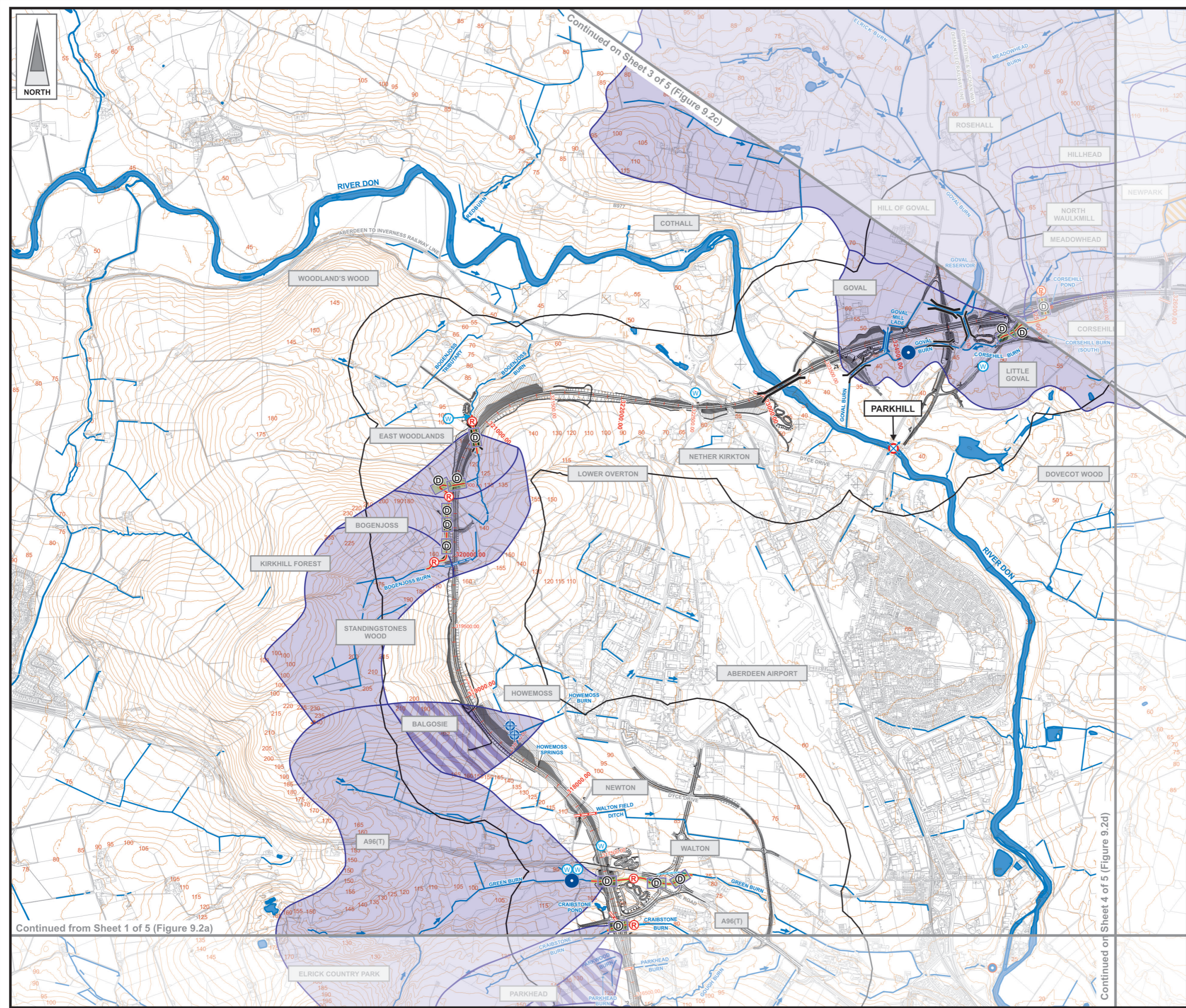
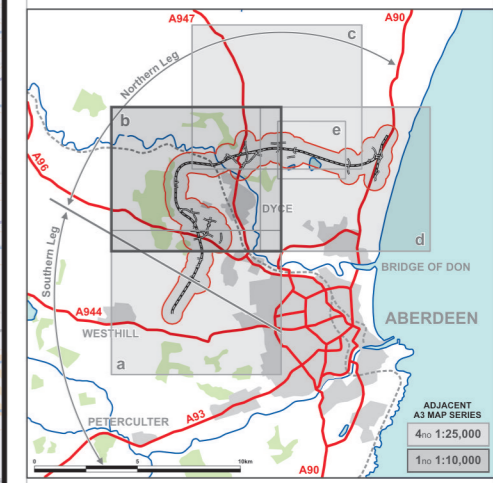


FIGURE 9.2b



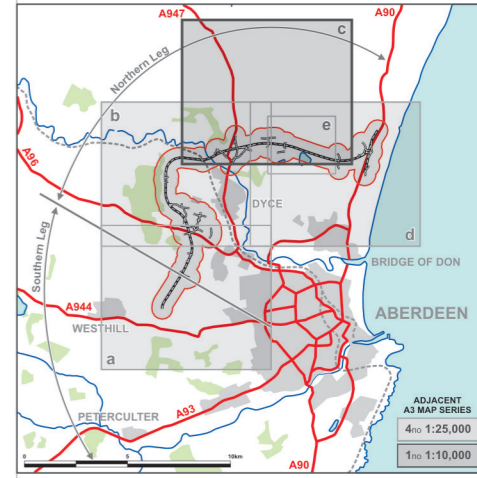
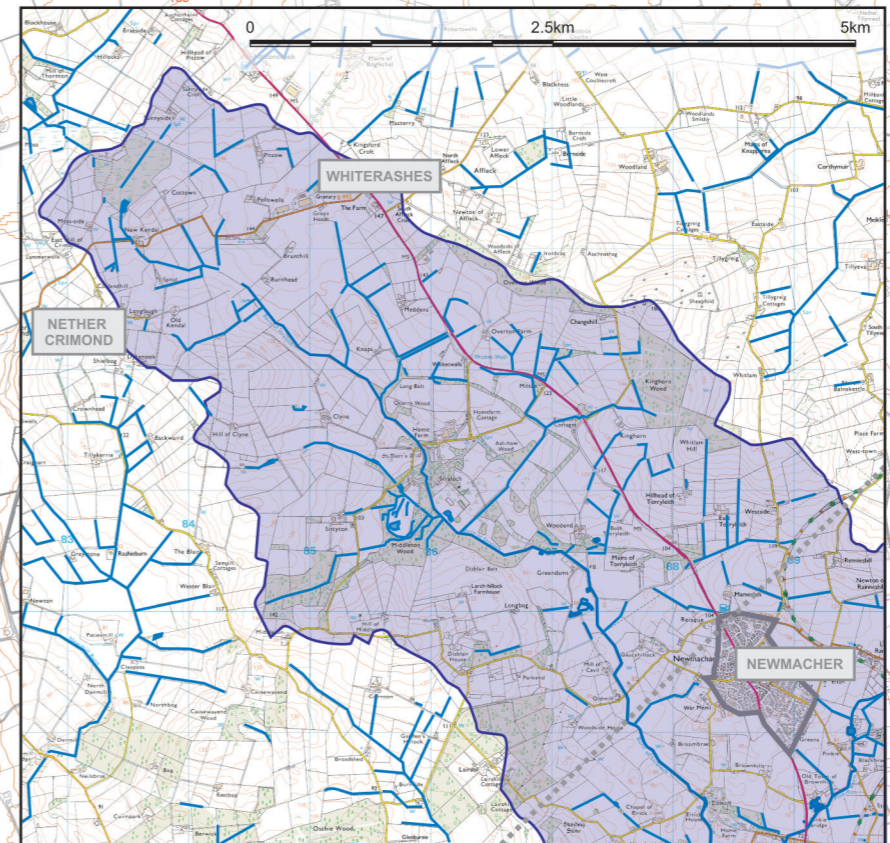
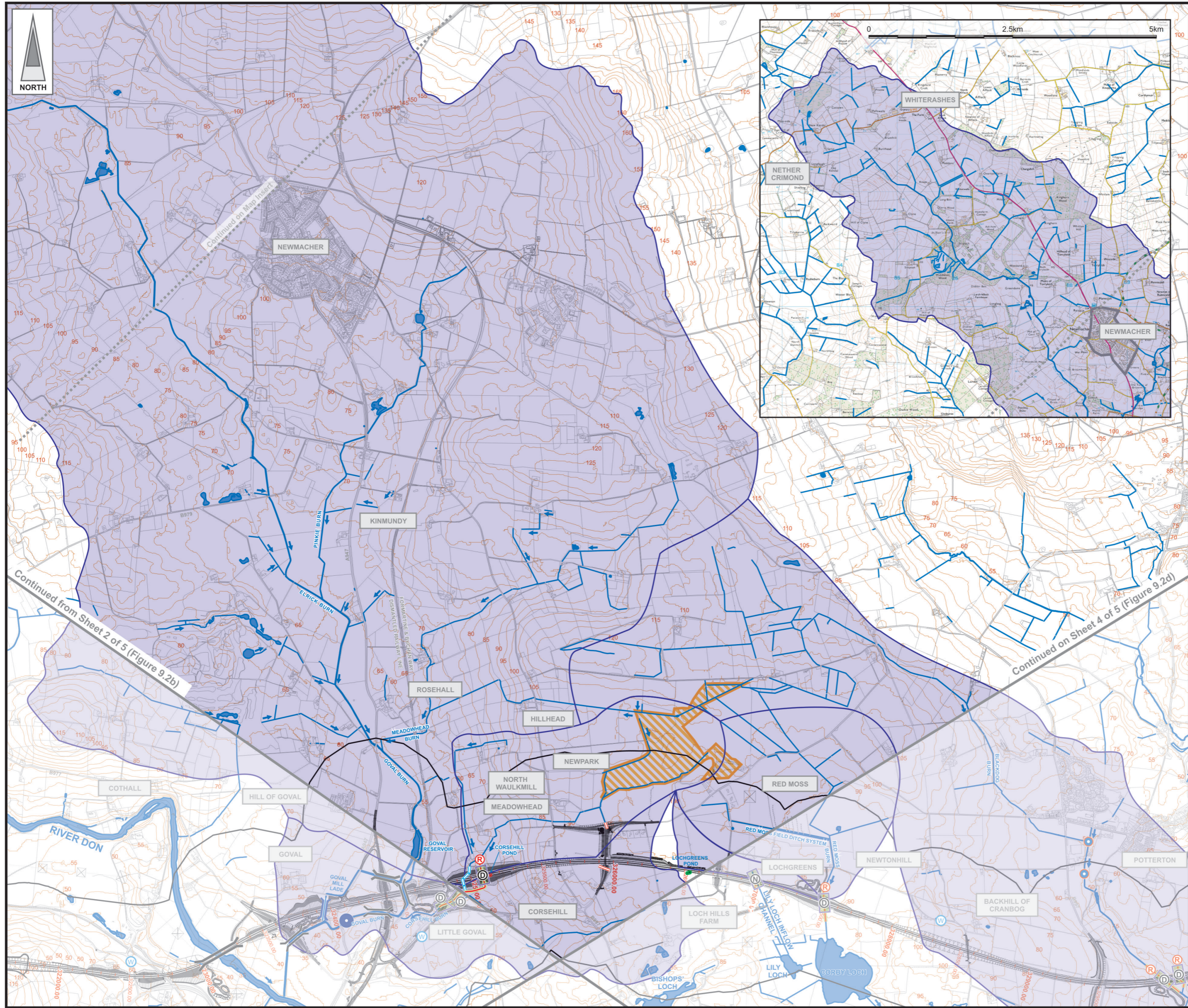
- LEGEND**
- Proposed Route (Engineering Profile 04/05/07)
  - Watercourses
  - Direction of Flow
  - Waterbody
  - Hydrological Feature Boundary
  - Natural Catchment Boundary / Dissected Catchment Boundary
  - Spring Location
  - Private Groundwater Well Supply
  - Depressed Invert Culvert
  - Network Culvert
  - Stream Re-Alignment
  - Watercourse Lost (to Stream Re-Alignment)
  - Watercourse Lost (to Pre-Earthworks Drainage)
  - Watercourse/Feature Lost (Filled In)
  - Bridge
  - Aqueduct
  - SEPA Flow Gauges
  - SEPA Spot Gauging Location
  - JACOBS Spot Gauging Location
  - SEPA Rain Gauge (Daily Recording and Tipping Bucket)

**JE JACOBS**  
 95 Bothwell Street, Glasgow, G2 7HX, UK  
 Tel: 0141 204 2511 Fax: 0141 226 3109  
 www.jacobsbabtie.com

Client	Aberdeen Western Peripheral Route		
Project	Aberdeen Western Peripheral Route Environmental Statement, Part B - Northern Leg		
Title	Surface Water Hydrology Sheet 2 of 5		
Drawing Status	FINAL		
JB No.	0010332		
Figure No.	FIGURE 9.2b	Revisions	
Scale	1:25,000	Date	July 2007
Drawn	KA	Checked	LB
		Approved	SH

This drawing is not to be used in whole or part other than for the intended purpose and project as defined on this drawing. Refer to the contract for full terms and conditions. Maps produced by Jacobs UK Ltd. This map should NOT be rescaled. Copyright reserved.

**FIGURE 9.2c**



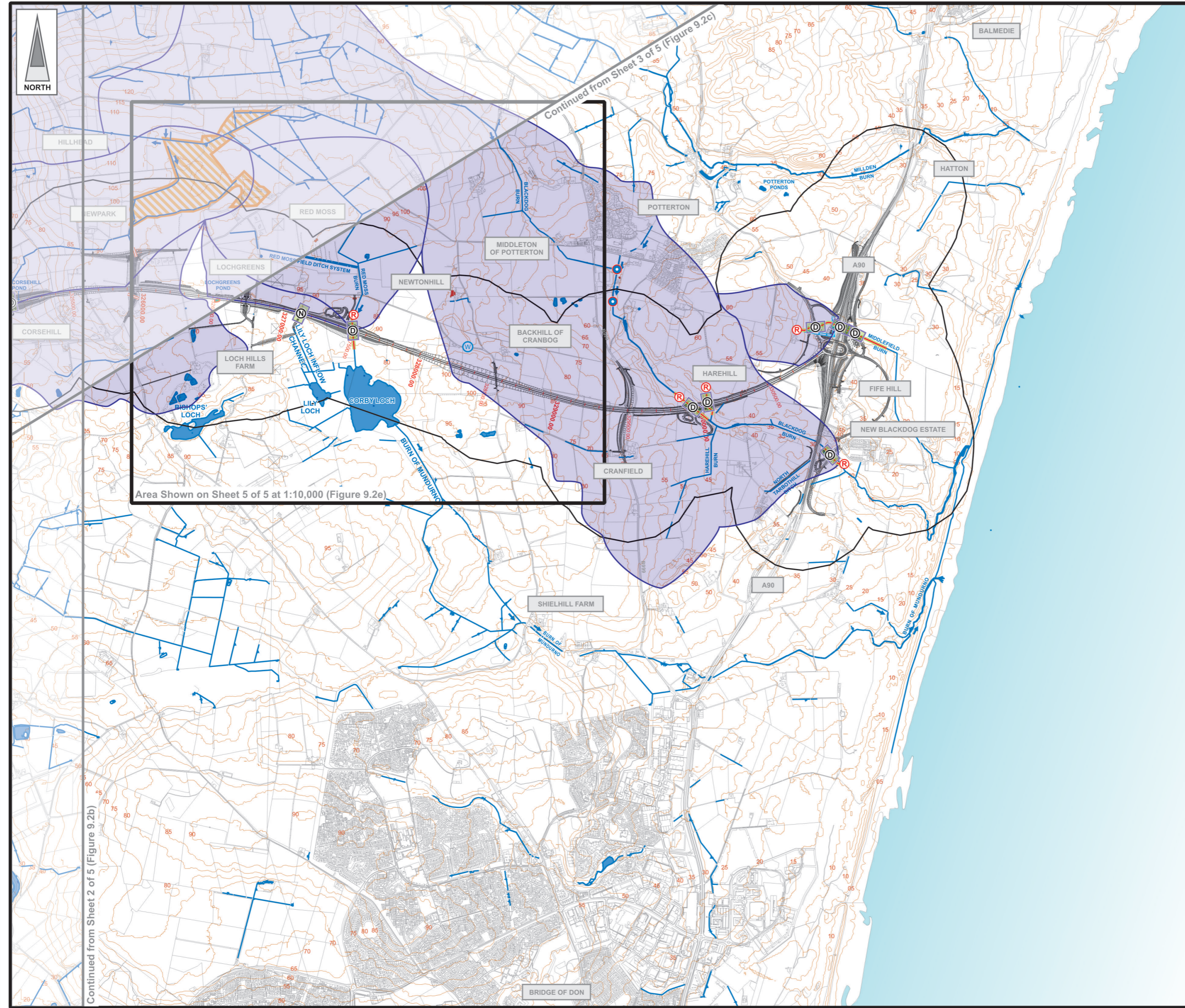
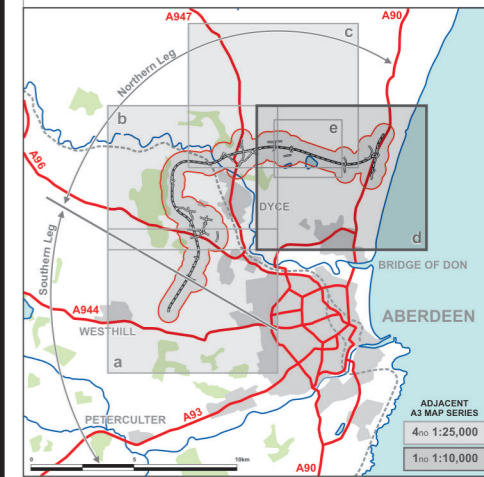
- LEGEND**
- Proposed Route (Engineering Profile 04/05/07)
  - Watercourses
  - Direction of Flow
  - Waterbody
  - Hydrological Feature Boundary
  - Natural Catchment Boundary / Dissected Catchment Boundary
  - Spring Location
  - Private Groundwater Well Supply
  - Depressed Invert Culvert
  - Network Culvert
  - Stream Re-Alignment
  - Watercourse Lost (to Stream Re-Alignment)
  - Watercourse Lost (to Pre-Earthworks Drainage)
  - Watercourse/Feature Lost (Filled In)
  - Bridge
  - Aqueduct
  - SEPA Flow Gauges
  - SEPA Spot Gauging Location
  - JACOBS Spot Gauging Location
  - SEPA Rain Gauge (Daily Recording and Tipping Bucket)

**JE JACOBS**  
 95 Bothwell Street, Glasgow, G2 7HX, UK  
 Tel: 0141 204 2511 Fax: 0141 226 3109  
 www.jacobsbatle.com

Client	Aberdeen Western Peripheral Route	
Project	Aberdeen Western Peripheral Route Environmental Statement, Part B - Northern Leg	
Title	Surface Water Hydrology Sheet 3 of 5	
Drawing Status	FINAL	Revisions
JB No.	0010332	Date July 2007
Figure No.	FIGURE 9.2c	Approved SH
Scale	1:25,000	Checked LB
Drawn	KA	signature

Based upon the Ordnance Survey mapping with the permission of Ordnance Survey on behalf of the Controller of Her Majesty's Stationery Office © Crown Copyright. Unauthorised reproduction infringes Crown Copyright and may lead to prosecution or civil proceedings. Scottish Executive Licence number: SE100020540 (2007). This drawing is not to be used in whole or part other than for the intended purpose and project as defined on this drawing. Refer to the contract for full terms and conditions. Maps produced by Jacobs UK Ltd. This map should NOT be rescaled. Copyright reserved.

FIGURE 9.2d



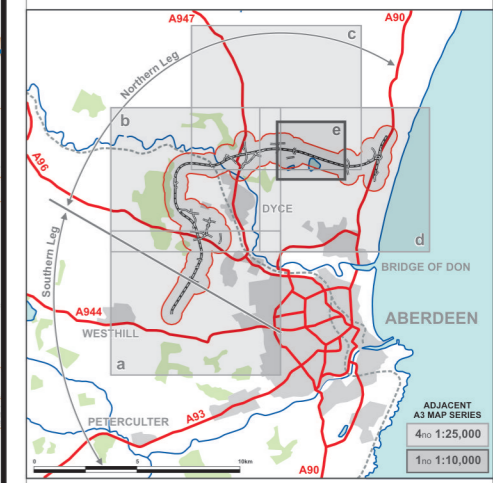
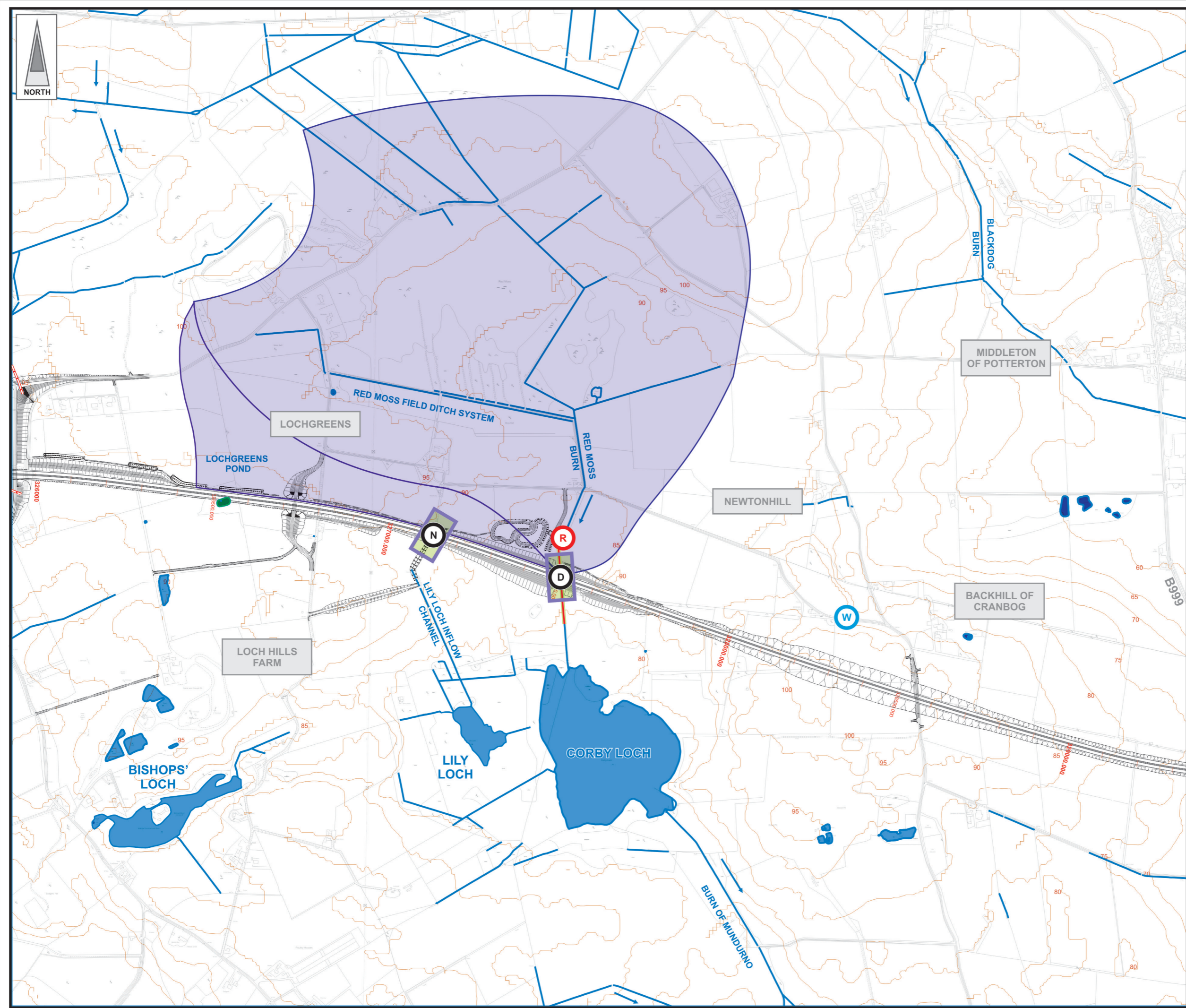
- LEGEND**
- Proposed Route (Engineering Profile 04/05/07)
  - Watercourses
  - Direction of Flow
  - Waterbody
  - Hydrological Feature Boundary
  - Natural Catchment Boundary / Dissected Catchment Boundary
  - Spring Location
  - Private Groundwater Well Supply
  - Depressed Invert Culvert
  - Network Culvert
  - Stream Re-Alignment
  - Watercourse Lost (to Stream Re-Alignment)
  - Watercourse Lost (to Pre-Earthworks Drainage)
  - Watercourse/Feature Lost (Filled In)
  - Bridge
  - Aqueduct
  - SEPA Flow Gauges
  - SEPA Spot Gauging Location
  - JACOBS Spot Gauging Location
  - SEPA Rain Gauge (Daily Recording and Tipping Bucket)

**JE JACOBS**  
 95 Bothwell Street, Glasgow, G2 7HX, UK  
 Tel: 0141 204 2511 Fax: 0141 226 3109  
 www.jacobsbattle.com

Client	Aberdeen Western Peripheral Route		
Project	Aberdeen Western Peripheral Route Environmental Statement, Part B - Northern Leg		
Title	Surface Water Hydrology Sheet 4 of 5		
Drawing Status	FINAL		
JB No.	0010332		
Figure No.	FIGURE 9.2d	Revisions	
Scale	1:25,000	Date	July 2007
Drawn	KA	Checked	LB
		Approved	SH

Based upon the Ordnance Survey mapping with the permission of Ordnance Survey on behalf of the Controller of Her Majesty's Stationery Office © Crown Copyright. Unauthorised reproduction infringes Crown Copyright and may lead to prosecution or civil proceedings. Scottish Executive Licence number: SE100020540 (2007). This drawing is not to be used in whole or part other than for the intended purpose and project as defined on this drawing. Refer to the contract for full terms and conditions. Maps produced by Jacobs UK Ltd. This map should NOT be rescaled. Copyright reserved.

FIGURE 9.2e



- LEGEND**
- Proposed Route (Engineering Profile 04/05/07)
  - Watercourses
  - Direction of Flow
  - Waterbody
  - Hydrological Feature Boundary
  - Natural Catchment Boundary / Dissected Catchment Boundary
  - Spring Location
  - Private Groundwater Well Supply
  - Depressed Invert Culvert
  - Network Culvert
  - Flood Flow Culvert
  - Stream Re-Alignment
  - Watercourse Lost (to Pre-Earthworks Drainage)
  - Bridge
  - Aqueduct
  - SEPA Flow Gauges
  - SEPA Spot Gauging Location
  - JACOBS Spot Gauging Location
  - SEPA Rain Gauge (Daily Recording and Tipping Bucket)

**JE JACOBS**  
 95 Bothwell Street, Glasgow, G2 7HX, UK  
 Tel: 0141 204 2511 Fax: 0141 226 3109  
 www.jacobsbabtie.com

Client: **Aberdeen Western Peripheral Route**

Project: **Aberdeen Western Peripheral Route**  
 Environmental Statement, Part B - Northern Leg

Title: **Surface Water Hydrology**  
 Sheet 5 of 5

Drawing Status	FINAL	Revisions	
JB No.	0010332	Date	July 2007
Figure No.	FIGURE 9.2e	Checked	LB
Scale	1:10,000	Approved	SH
Drawn	KA	signature	signature



Based upon the Ordnance Survey mapping with the permission of Ordnance Survey on behalf of the Controller of Her Majesty's Stationery Office © Crown Copyright. Unauthorised reproduction infringes Crown Copyright and may lead to prosecution or civil proceedings. Scottish Executive Licence number: SE100020540 (2007).

This drawing is not to be used in whole or part other than for the intended purpose and project as defined on this drawing. Refer to the contract for full terms and conditions. Maps produced by Jacobs UK Ltd. This map should NOT be rescaled. Copyright reserved.