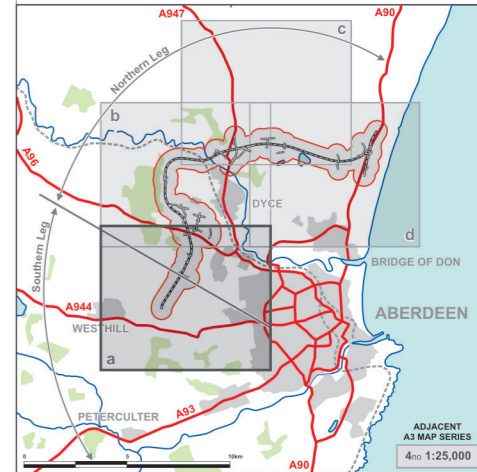
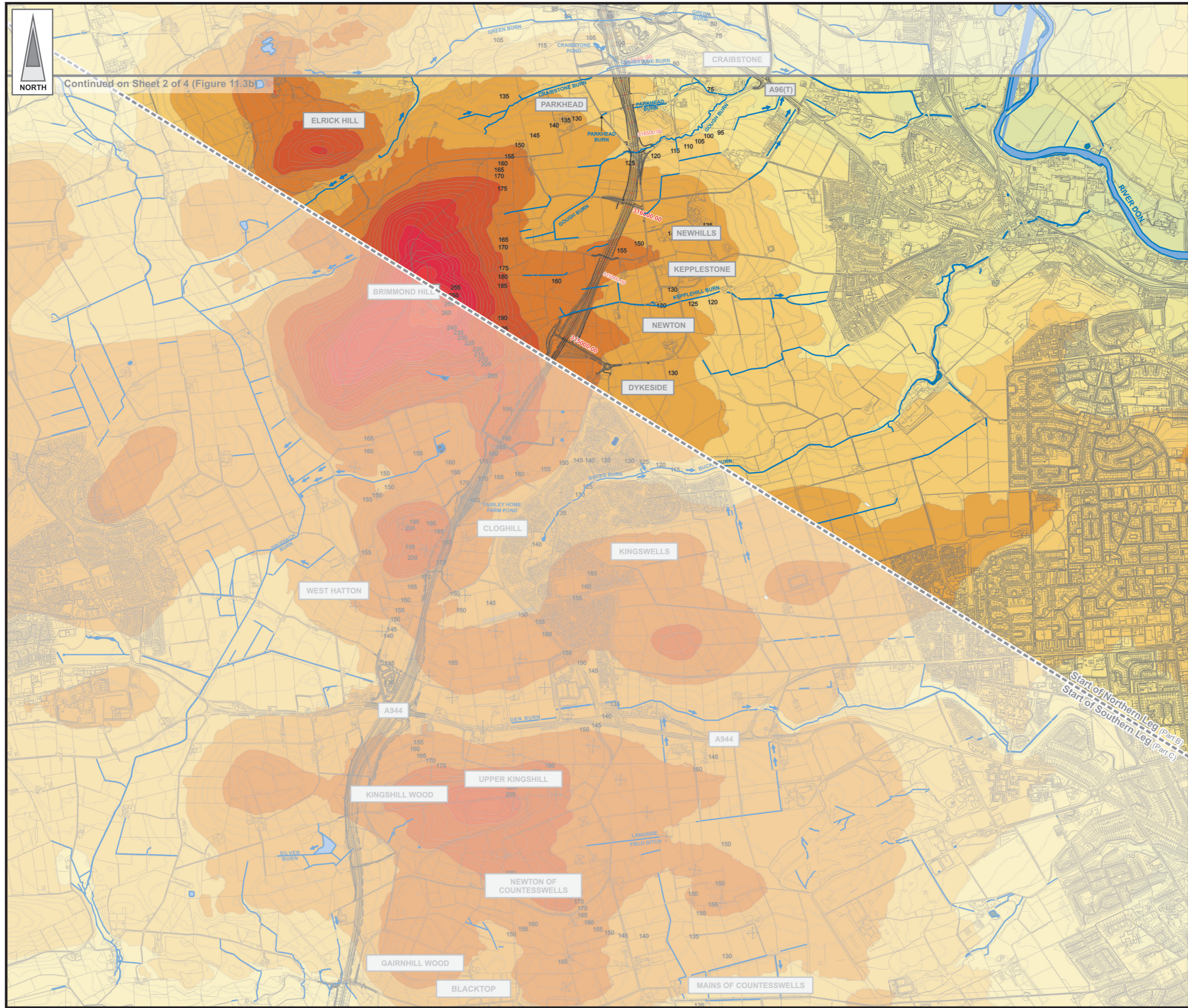


FIGURE 11.3a



LEGEND

- Proposed Route (Engineering Profile 04/05/07)
- Watercourses
- Direction of Flow
- Waterbody

	250 - 275m
	225 - 250m
	200 - 225m
	175 - 200m
	150 - 175m
	125 - 150m
	100 - 125m
	75 - 100m
	50 - 75m
	25 - 50m
	0 - 25m
	Below 0m

Rev	Date	Purpose of Revision	Drwn	Chkd	Appd

JE JACOBS
 95 Bothwell Street, Glasgow, G2 7HX, UK
 Tel: 0141 204 2511 Fax: 0141 226 3109
 www.jacobsbabtie.com

Client: **Aberdeen Western Peripheral Route**

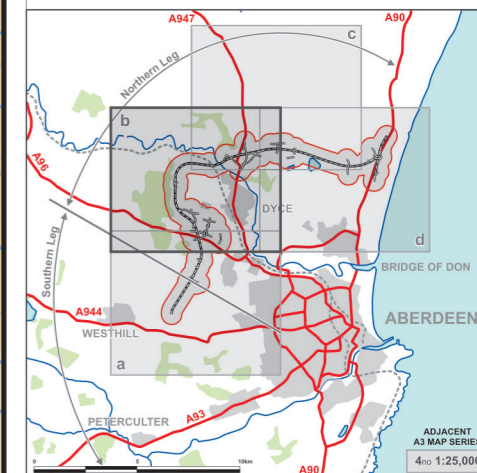
Project: **Aberdeen Western Peripheral Route Environmental Statement, Part B - Northern Leg**

Title: **Topography and Drainage Sheet 1 of 4**

Drawing Status	FINAL	Revisions	
JB No.	0010332	Date	July 2007
Figure No.	FIGURE 11.3a	Approved	SH
Scale	1:25,000	Checked	JT
Drawn	SHF	signature	signature

Based upon the Ordnance Survey mapping with the permission of Ordnance Survey on behalf of the Controller of Her Majesty's Stationery Office © Crown Copyright. Unauthorised reproduction infringes Crown Copyright and may lead to prosecution or civil proceedings. Scottish Executive Licence number: SE100020540 (2007). This drawing is not to be used in whole or part other than for the intended purpose and project as defined on this drawing. Refer to the contract for full terms and conditions. Maps produced by Jacobs UK Ltd. This map should NOT be rescaled. Copyright reserved.

FIGURE 11.3b



LEGEND

- Proposed Route (Engineering Profile 04/05/07)
- Watercourses
- Direction of Flow
- Waterbody

Elevation Legend

- 250 - 275m
- 225 - 250m
- 200 - 225m
- 175 - 200m
- 150 - 175m
- 125 - 150m
- 100 - 125m
- 75 - 100m
- 50 - 75m
- 25 - 50m
- 0 - 25m
- Below 0m

Rev	Date	Purpose of Revision	Drwn	Chkd	Appd

JE JACOBS
 95 Bothwell Street, Glasgow, G2 7HX, UK
 Tel: 0141 204 2511 Fax: 0141 226 3109
 www.jacobsbaltie.com

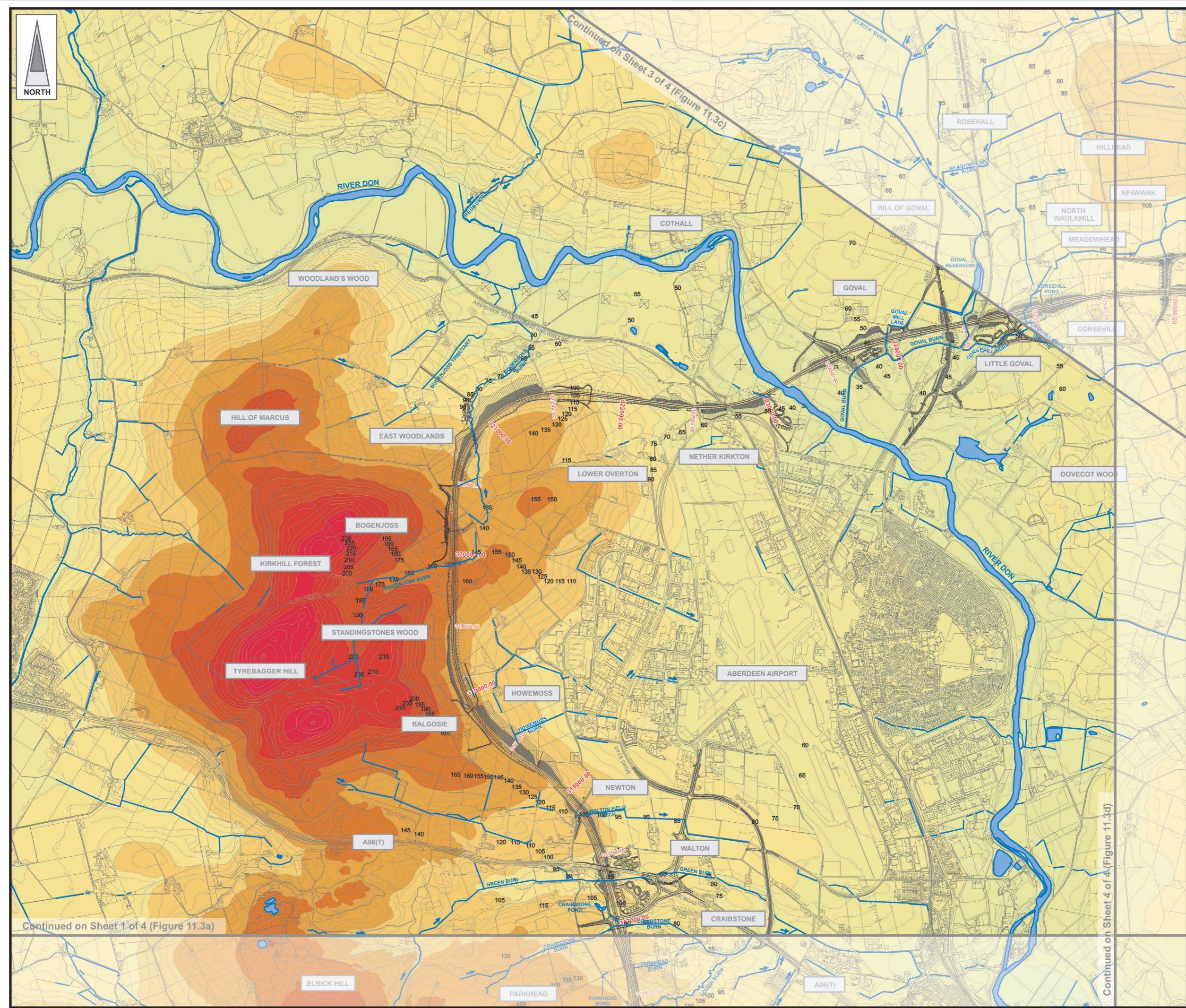
Client: **Aberdeen Western Peripheral Route**

Project: **Aberdeen Western Peripheral Route Environmental Statement, Part B - Northern Leg**

Title: **Topography and Drainage Sheet 2 of 4**

Drawing Status	FINAL	Revisions	
JB No.	0010332	Date	July 2007
Figure No.	FIGURE 11.3b	Checked	JT
Scale	1:25,000	Approved	SH
Drawn	SHF		

This drawing is not to be used in whole or part other than for the intended purpose and project as defined on this drawing. Refer to the contract for full terms and conditions. Maps produced by Jacobs UK Ltd. This map should NOT be rescaled. Copyright reserved.



Continued on Sheet 1 of 4 (Figure 11.3a)

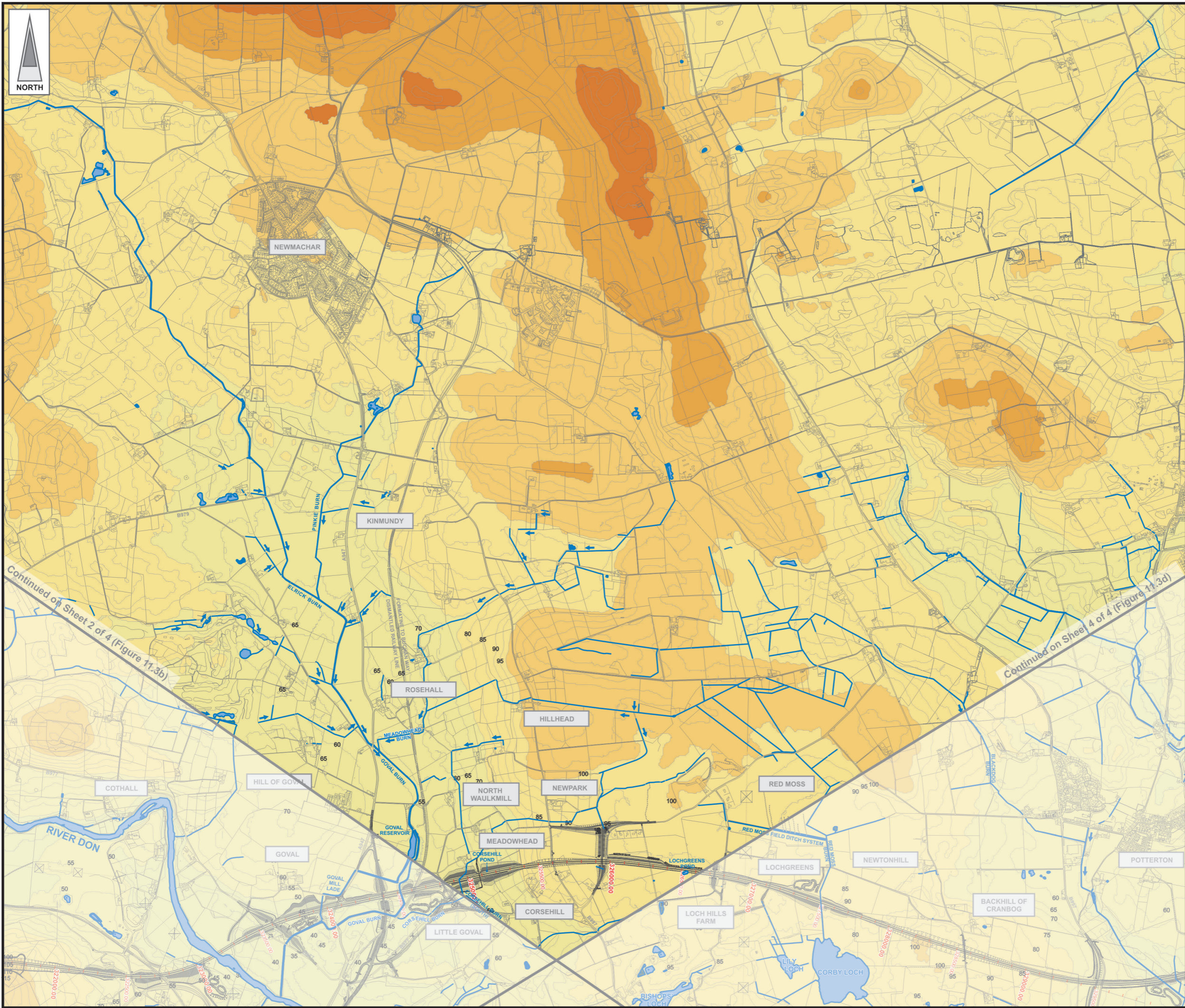
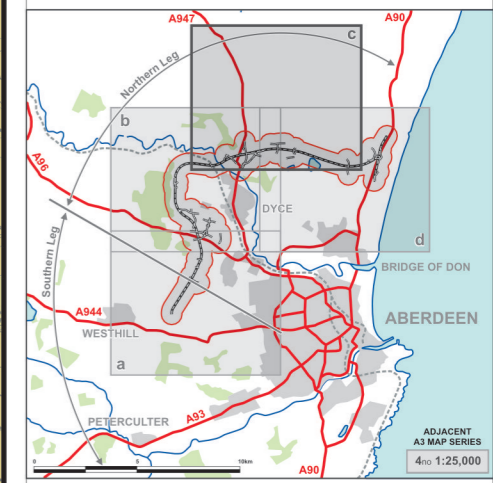
Continued on Sheet 3 of 4 (Figure 11.3c)

Continued on Sheet 4 of 4 (Figure 11.3d)



Based upon the Ordnance Survey mapping with the permission of Ordnance Survey on behalf of the Controller of Her Majesty's Stationery Office © Crown Copyright. Unauthorised reproduction infringes Crown Copyright and may lead to prosecution or civil proceedings. Scottish Executive Licence number: SE100020540 (2007).

FIGURE 11.3c



LEGEND

- Proposed Route
(Engineering Profile 04/05/07)
- Watercourses
- Direction of Flow
- Waterbody

	250 - 275m
	225 - 250m
	200 - 225m
	175 - 200m
	150 - 175m
	125 - 150m
	100 - 125m
	75 - 100m
	50 - 75m
	25 - 50m
	0 - 25m
	Below 0m

Rev	Date	Purpose of Revision	Drwn	Chkd	Appd

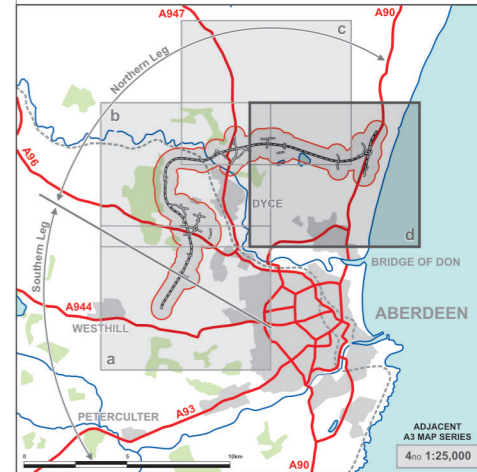
JE JACOBS
 95 Bothwell Street, Glasgow, G2 7HX, UK
 Tel: 0141 204 2511 Fax: 0141 226 3109
 www.jacobsbabtie.com

Client					
Project	Aberdeen Western Peripheral Route Environmental Statement, Part B - Northern Leg				
Title	Topography and Drainage Sheet 3 of 4				

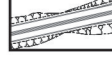
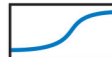









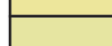




Drawing Status	FINAL	Revisions	
JB No.	0010332	Date	July 2007
Figure No.	FIGURE 11.3c	Checked	SH
Scale	1:25,000	Approved	SH
Drawn	SHF	Checked	JT

Based upon the Ordnance Survey mapping with the permission of Ordnance Survey on behalf of the Controller of Her Majesty's Stationery Office © Crown Copyright. Unauthorised reproduction infringes Crown Copyright and may lead to prosecution or civil proceedings. Scottish Executive Licence number: SE100020540 (2007). This drawing is not to be used in whole or part other than for the intended purpose and project as defined on this drawing. Refer to the contract for full terms and conditions. Maps produced by Jacobs UK Ltd. This map should NOT be rescaled. Copyright reserved.

FIGURE 11.3d



LEGEND

-  Proposed Route (Engineering Profile 04/05/07)
 -  Watercourses
 -  Direction of Flow
 -  Waterbody
-
-  250 - 275m
 -  225 - 250m
 -  200 - 225m
 -  175 - 200m
 -  150 - 175m
 -  125 - 150m
 -  100 - 125m
 -  75 - 100m
 -  50 - 75m
 -  25 - 50m
 -  0 - 25m
 -  Below 0m

Rev	Date	Purpose of Revision	Drwn	Chkd	Appd

JE JACOBS
 95 Bothwell Street, Glasgow, G2 7HX, UK
 Tel: 0141 204 2511 Fax: 0141 226 3109
 www.jacobsbabtie.com

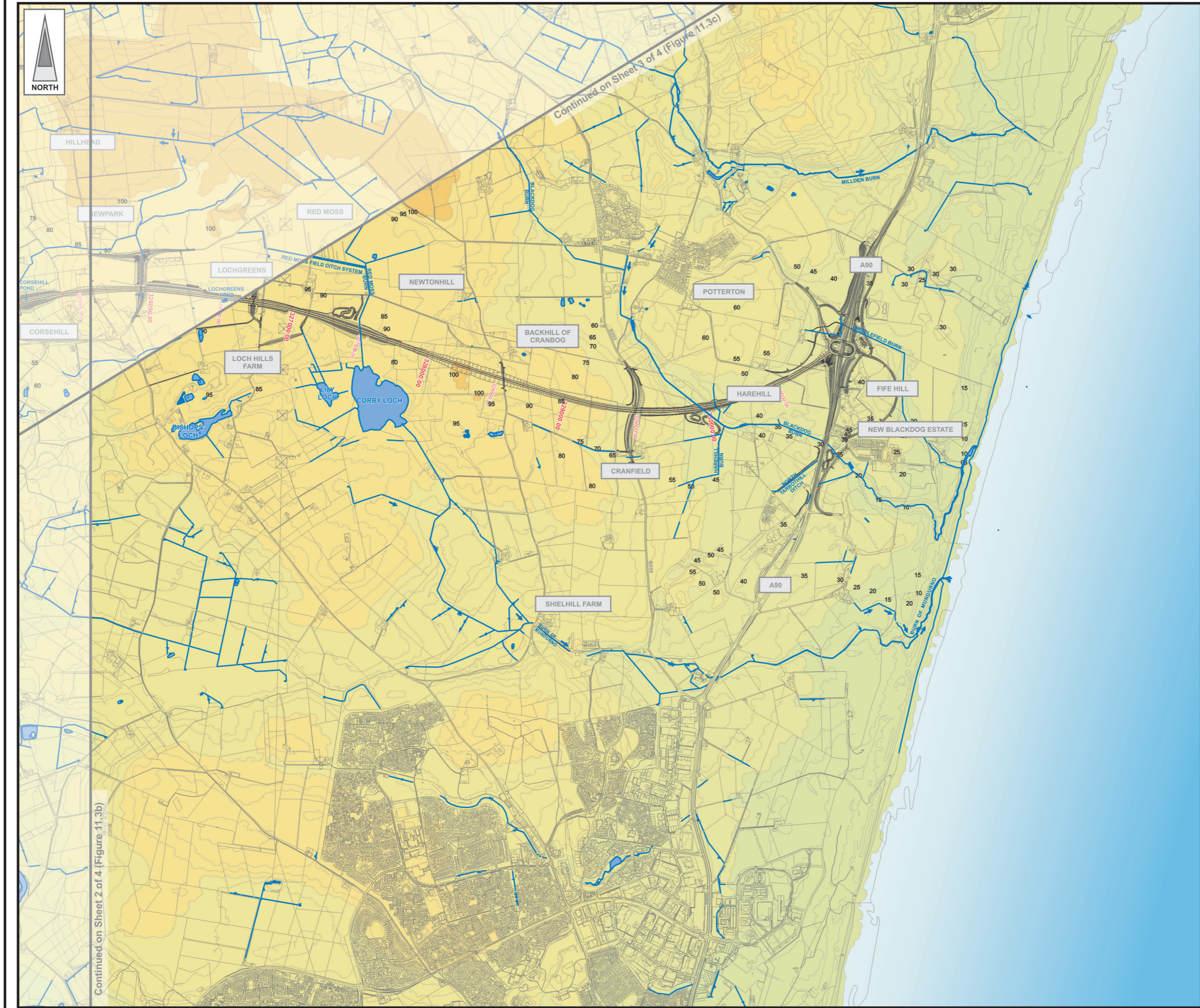
Client: **Aberdeen Western Peripheral Route**

Project: **Aberdeen Western Peripheral Route**
 Environmental Statement, Part B - Northern Leg

Title: **Topography and Drainage**
 Sheet 4 of 4

Drawing Status	FINAL	Revisions	
JB No.	0010332	Date	July 2007
Figure No.	FIGURE 11.3d	Drawn	SHF
Scale	1:25,000	Checked	JT
		Approved	SH

This drawing is not to be used in whole or part other than for the intended purpose and project as defined on this drawing. Refer to the contract for full terms and conditions. Maps produced by Jacobs UK Ltd. This map should NOT be rescaled. Copyright reserved.



Based upon the Ordnance Survey mapping with the permission of Ordnance Survey on behalf of the Controller of Her Majesty's Stationery Office © Crown Copyright. Unauthorised reproduction infringes Crown Copyright and may lead to prosecution or civil proceedings. Scottish Executive Licence number: SE100020540 (2007).