



Viewpoint 01 - Brimmond Hill (Hill Landscape Character Type)



Viewpoint 02 - Elrick Hill (Hill Landscape Character Type)

Rev	Date	Purpose of Revision	Drwn	Chkd	Appd

**JE JACOBS**  
 95 Bothwell Street, Glasgow, G2 7HX, UK  
 Tel: 0141 204 2511 Fax: 0141 226 3109  
 www.jacobsabtie.com

Client: **Aberdeen Western Peripheral Route**

Project: **Aberdeen Western Peripheral Route**  
 Environmental Statement, Part B - Northern Leg

Title: **Landscape Character Area**  
 Photographs  
 Sheet 1 of 11

Drawing Status: **FINAL**

JB No.: **0010332**

Figure No.: **FIGURE 11.4a**

Scale: Drawn **RB** Checked **JT/LS** Date **July 2007** Approved **SH**

Revisions: 

--	--	--	--

This drawing is not to be used in whole or part other than for the intended purpose and project as defined on this drawing. Refer to the contract for full terms and conditions. Maps produced by Jacobs UK Ltd. This map should NOT be rescaled. Copyright reserved.





Viewpoint 03 - Tyrebagger Hill (Hill Landscape Character Type)



Viewpoint 04 - Foresterseat (Hill Landscape Character Type)

--	--	--	--	--	--

Rev	Date	Purpose of Revision	Drwn	Chkd	Appd
-----	------	---------------------	------	------	------

**JE JACOBS**  
 95 Bothwell Street, Glasgow, G2 7HX, UK  
 Tel: 0141 204 2511 Fax: 0141 226 3109  
 www.jacobsbabtie.com

Client **Aberdeen Western Peripheral Route**

Project **Aberdeen Western Peripheral Route  
 Environmental Statement, Part B - Northern Leg**

Title **Landscape Character Area  
 Photographs  
 Sheet 2 of 11**

Drawing Status **FINAL**

JB No. **0010332**

Figure No. **FIGURE 11.4b**

Scale **RB** Checked **JT/LS** Date **July 2007** Approved **SH**

This drawing is not to be used in whole or part other than for the intended purpose and project as defined on this drawing. Refer to the contract for full terms and conditions. Maps produced by Jacobs UK Ltd. This map should NOT be rescaled. Copyright reserved.





Viewpoint 05 - Greenferns (Open Farmland Landscape Character Type)



Viewpoint 06 - Overhills (Open Farmland Landscape Character Type)

Rev	Date	Purpose of Revision	Drwn	Chkd	Appd

**JE JACOBS**  
 95 Bothwell Street, Glasgow, G2 7HX, UK  
 Tel: 0141 204 2511 Fax: 0141 226 3109  
 www.jacobsabtie.com

Client **Aberdeen Western Peripheral Route**

Project **Aberdeen Western Peripheral Route  
 Environmental Statement, Part B - Northern Leg**

Title **Landscape Character Area  
 Photographs  
 Sheet 3 of 11**

Drawing Status **FINAL**

JB No. **0010332**

Figure No. **FIGURE 11.4c**

Scale **Drawn RB Checked JT/LS Approved SH**

Date **July 2007**

This drawing is not to be used in whole or part other than for the intended purpose and project as defined on this drawing. Refer to the contract for full terms and conditions. Maps produced by Jacobs UK Ltd. This map should NOT be rescaled. Copyright reserved.





Viewpoint 07 - Newton (Open Farmland Landscape Character Type)



Viewpoint 08 - Goval (Open Farmland Landscape Character Type)

--	--	--	--	--	--

Rev	Date	Purpose of Revision	Drwn	Chkd	Appd
-----	------	---------------------	------	------	------

**JE JACOBS**  
 95 Bothwell Street, Glasgow, G2 7HX, UK  
 Tel: 0141 204 2511 Fax: 0141 226 3109  
 www.jacobsabtie.com

Client **Aberdeen Western Peripheral Route**

Project **Aberdeen Western Peripheral Route  
 Environmental Statement, Part B - Northern Leg**

Title **Landscape Character Area  
 Photographs  
 Sheet 4 of 11**

Drawing Status **FINAL**

JB No. **0010332**

Figure No. **FIGURE 11.4d**

Scale **Drawn RB Checked JT/LS Approved SH**

Date **July 2007**

This drawing is not to be used in whole or part other than for the intended purpose and project as defined on this drawing. Refer to the contract for full terms and conditions. Maps produced by Jacobs UK Ltd. This map should NOT be rescaled. Copyright reserved.





Viewpoint 09 - Perwinnes (Open Farmland Landscape Character Type)



Viewpoint 10 - Potterton (Open Farmland Landscape Character Type)



Viewpoint 11 - Cloverhill (Open Farmland Landscape Character Type)

Rev	Date	Purpose of Revision	Drwn	Chkd	Appd

**JE JACOBS**  
 95 Bothwell Street, Glasgow, G2 7HX, UK  
 Tel: 0141 204 2511 Fax: 0141 226 3109  
 www.jacobsbabtie.com

Client: **Aberdeen Western Peripheral Route**

Project: **Aberdeen Western Peripheral Route  
 Environmental Statement, Part B - Northern Leg**

Title: **Landscape Character Area  
 Photographs  
 Sheet 5 of 11**

Drawing Status: **FINAL**

JB No.: **0010332**

Figure No.: **FIGURE 11.4e**

Scale: **Drawn RB, Checked JT/LS, Date July 2007, Approved SH**

This drawing is not to be used in whole or part other than for the intended purpose and project as defined on this drawing. Refer to the contract for full terms and conditions. Maps produced by Jacobs UK Ltd. This map should NOT be rescaled. Copyright reserved.





Viewpoint 12 - Blackdog (Open Farmland Landscape Character Type)



Viewpoint 13 - Craibstone (Wooded Farmland Landscape Character Type)

Rev	Date	Purpose of Revision	Drwn	Chkd	Appd

**JE JACOBS**  
 95 Bothwell Street, Glasgow, G2 7HX, UK  
 Tel: 0141 204 2511 Fax: 0141 226 3109  
 www.jacobsabtie.com

Client **Aberdeen Western Peripheral Route**

Project **Aberdeen Western Peripheral Route  
 Environmental Statement, Part B - Northern Leg**

Title **Landscape Character Area  
 Photographs  
 Sheet 6 of 11**

Drawing Status **FINAL**

JB No. **0010332**

Figure No. **FIGURE 11.4f**

Scale **Drawn RB Checked JT/LS Date July 2007 Approved SH**





Viewpoint 14 - Braes Of Don (Wooded Farmland Landscape Character Type)



Viewpoint 15 - Red Moss (Wooded Farmland Landscape Character Type)



Viewpoint 16 - Lower Don Valley (Valley Landscape Character Type)

--	--	--	--	--	--

Rev	Date	Purpose of Revision	Drwn	Chkd	Appd

**JE JACOBS**  
 95 Bothwell Street, Glasgow, G2 7HX, UK  
 Tel: 0141 204 2511 Fax: 0141 226 3109  
 www.jacobsabtie.com

Client **Aberdeen Western Peripheral Route**

Project **Aberdeen Western Peripheral Route  
 Environmental Statement, Part B - Northern Leg**

Title **Landscape Character Area  
 Photographs  
 Sheet 7 of 11**

Drawing Status **FINAL**

JB No. **0010332**

Figure No. **FIGURE 11.4g**

Scale **Drawn RB Checked JT/LS Approved SH**

Date **July 2007**

Revisions

--	--	--	--

This drawing is not to be used in whole or part other than for the intended purpose and project as defined on this drawing. Refer to the contract for full terms and conditions. Maps produced by Jacobs UK Ltd. This map should NOT be rescaled. Copyright reserved.





Viewpoint 17 - Upper Don Valley (Valley Landscape Character Type)



Viewpoint 18 - St. Fergus' (Valley Landscape Character Type)

Rev	Date	Purpose of Revision	Drwn	Chkd	Appd

**JE JACOBS**  
 95 Bothwell Street, Glasgow, G2 7HX, UK  
 Tel: 0141 204 2511 Fax: 0141 226 3109  
 www.jacobsbabtie.com

Client **Aberdeen Western Peripheral Route**

Project **Aberdeen Western Peripheral Route  
 Environmental Statement, Part B - Northern Leg**

Title **Landscape Character Area  
 Photographs  
 Sheet 8 of 11**

Drawing Status **FINAL**

JB No. **0010332**

Figure No. **FIGURE 11.4h**

Scale **RB** **JT/LS** **SH**

Date **July 2007**

Approved **SH**

This drawing is not to be used in whole or part other than for the intended purpose and project as defined on this drawing. Refer to the contract for full terms and conditions. Maps produced by Jacobs UK Ltd. This map should NOT be rescaled. Copyright reserved.





Viewpoint 19 - Lower Goval (Valley Landscape Character Type)



Viewpoint 20 - Balgownie Links (Coast Landscape Character Type)

Rev	Date	Purpose of Revision	Drwn	Chkd	Appd

**JE JACOBS**  
 95 Bothwell Street, Glasgow, G2 7HX, UK  
 Tel: 0141 204 2511 Fax: 0141 226 3109  
 www.jacobsbabtie.com

Client **Aberdeen Western Peripheral Route**

Project **Aberdeen Western Peripheral Route  
 Environmental Statement, Part B - Northern Leg**

Title **Landscape Character Area  
 Photographs  
 Sheet 9 of 11**

Drawing Status **FINAL**

JB No. **0010332**

Figure No. **FIGURE 11.4i**

Scale **Drawn RB Checked JT/LS Date July 2007 Approved SH**

Revisions

Date	July 2007
Approved	SH

This drawing is not to be used in whole or part other than for the intended purpose and project as defined on this drawing. Refer to the contract for full terms and conditions. Maps produced by Jacobs UK Ltd. This map should NOT be rescaled. Copyright reserved.





Viewpoint 21 - Auchmill Golf Course (Recreation Landscape Character Type)



Viewpoint 22 - Craibstone Golf Course (Recreation Landscape Character Type)

--	--	--	--	--	--

Rev	Date	Purpose of Revision	Drwn	Chkd	Appd

**JE JACOBS**  
 95 Bothwell Street, Glasgow, G2 7HX, UK  
 Tel: 0141 204 2511 Fax: 0141 226 3109  
 www.jacobsabtie.com

Client **Aberdeen Western Peripheral Route**

Project **Aberdeen Western Peripheral Route  
 Environmental Statement, Part B - Northern Leg**

Title **Landscape Character Area  
 Photographs  
 Sheet 10 of 11**

Drawing Status **FINAL**

JB No. **0010332**

Figure No. **FIGURE 11.4j**

Scale **Drawn RB Checked JT/LS Approved SH**

Date **July 2007**

Revisions

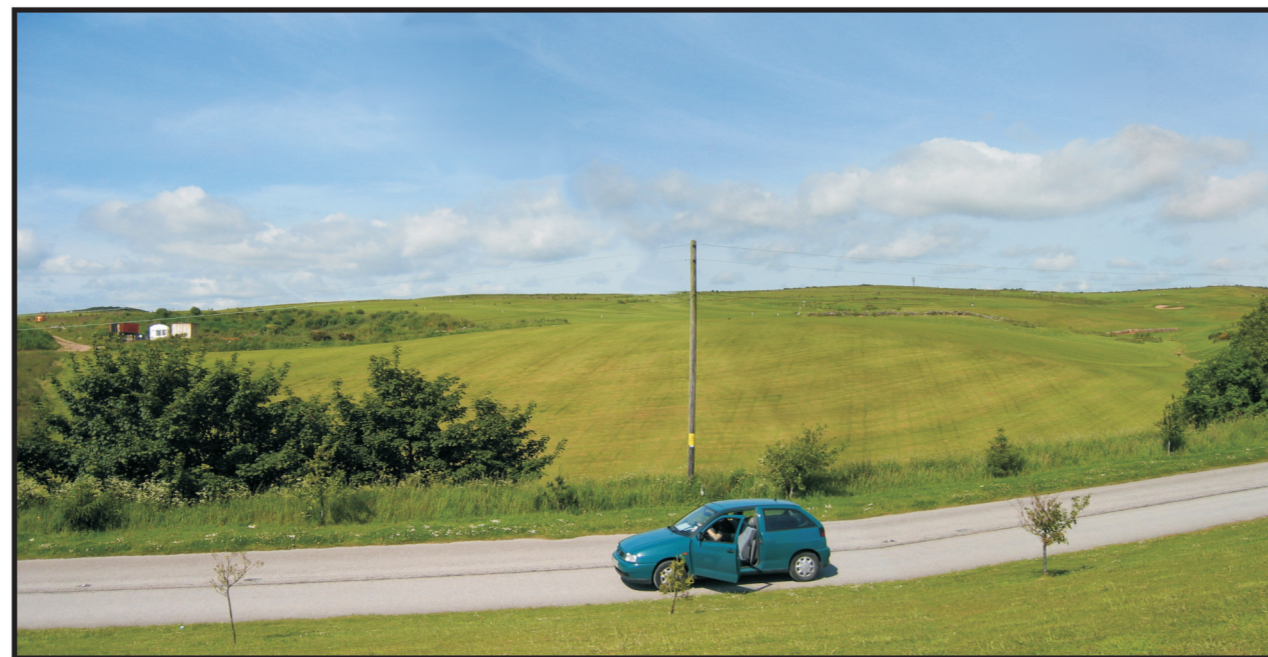
--	--	--	--

This drawing is not to be used in whole or part other than for the intended purpose and project as defined on this drawing. Refer to the contract for full terms and conditions. Maps produced by Jacobs UK Ltd. This map should NOT be rescaled. Copyright reserved.





Viewpoint 23 - Newmachar Golf Course (Recreation Landscape Character Type)



Viewpoint 24 - East Aberdeenshire Golf Course (Recreation Landscape Character Type)

Rev	Date	Purpose of Revision	Drwn	Chkd	Appd

**JE JACOBS**  
 95 Bothwell Street, Glasgow, G2 7HX, UK  
 Tel: 0141 204 2511 Fax: 0141 226 3109  
 www.jacobsabtie.com

Client **Aberdeen Western Peripheral Route**

Project **Aberdeen Western Peripheral Route  
 Environmental Statement, Part B - Northern Leg**

Title **Landscape Character Area  
 Photographs  
 Sheet 11 of 11**

Drawing Status **FINAL**

JB No. **0010332**

Figure No. **FIGURE 11.4k**

Scale **Drawn RB Checked JT/LS Approved SH**

Date **July 2007**

This drawing is not to be used in whole or part other than for the intended purpose and project as defined on this drawing. Refer to the contract for full terms and conditions. Maps produced by Jacobs UK Ltd. This map should NOT be rescaled. Copyright reserved.