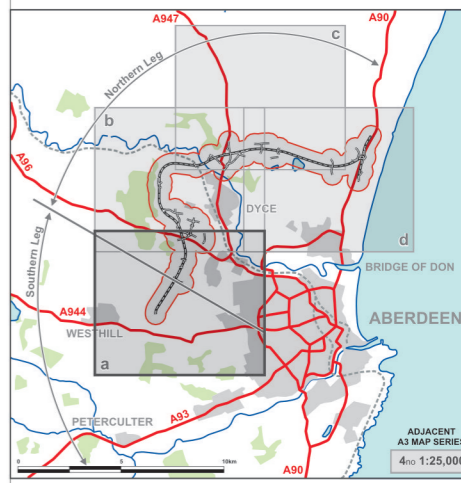
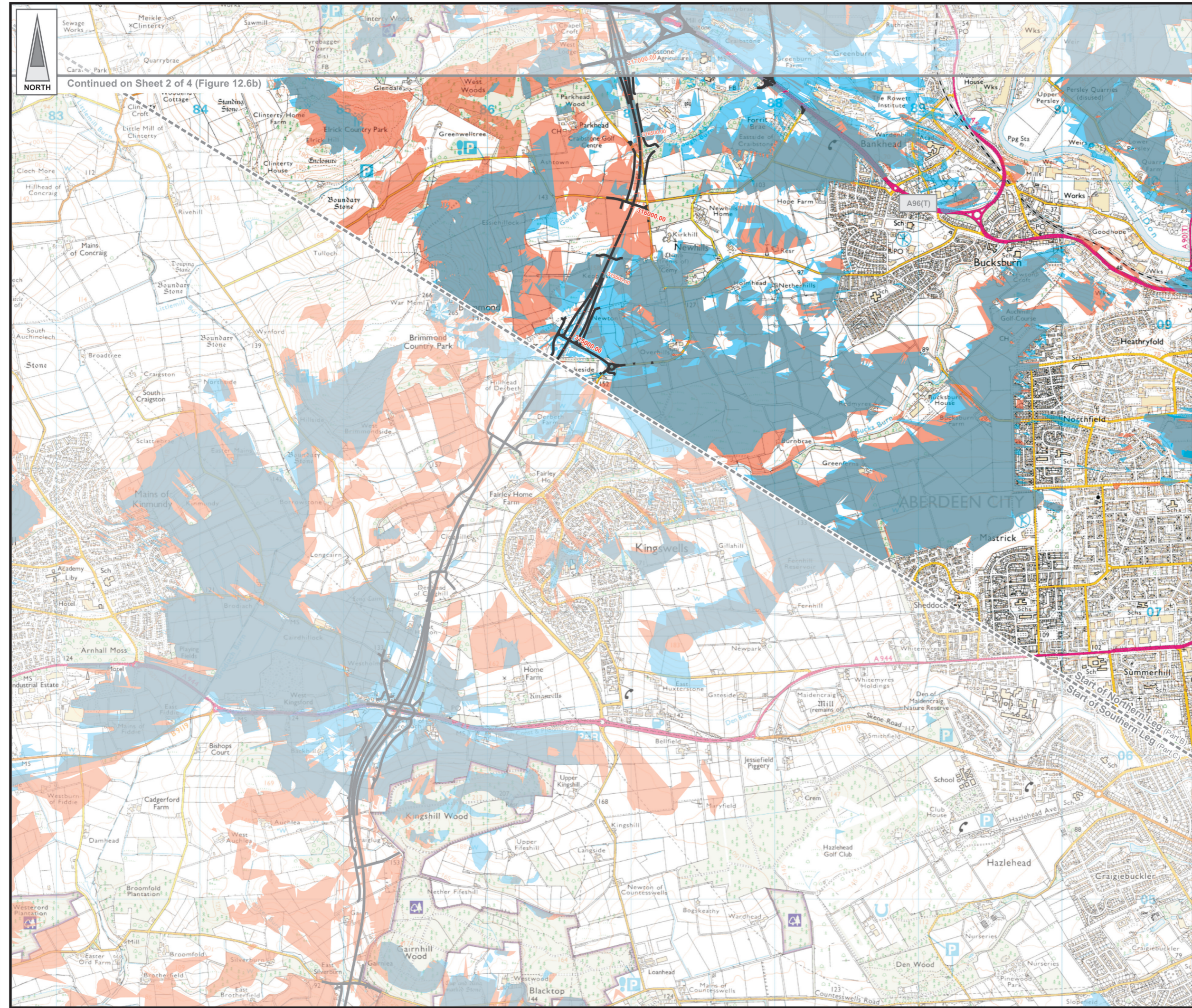






FIGURE 12.6a



LEGEND

-  Proposed Route
(Engineering Profile 04/05/07)
-  Daytime Visual Envelope
-  Nighttime Visual Envelope
-  Day and Night Visual Envelope

Rev	Date	Purpose of Revision	Drwn	Chkd	Appd

JE JACOBS
 95 Bothwell Street, Glasgow, G2 7HX, UK
 Tel: 0141 204 2511 Fax: 0141 226 3109
 www.jacobsabbie.com

Client: **Aberdeen Western Peripheral Route**

Project: **Aberdeen Western Peripheral Route Environmental Statement, Part B - Northern Leg**

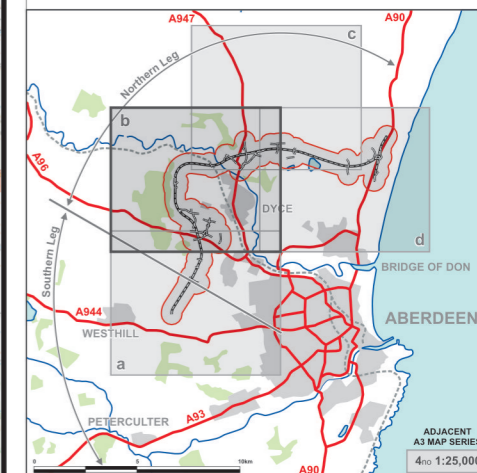
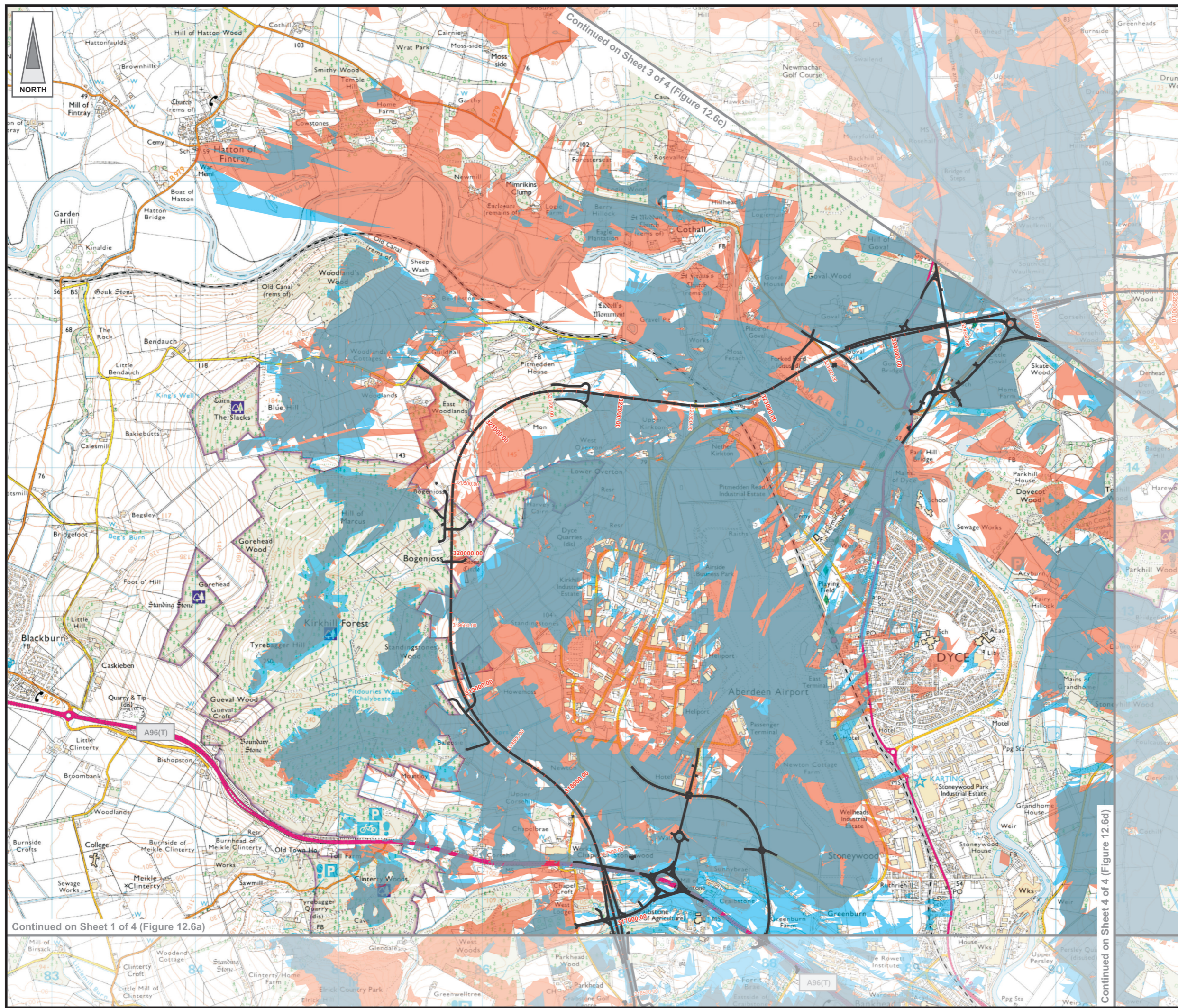
Title: **Theoretical Visual Envelope Map (Summer 15 years after Opening - Day and Night) Sheet 1 of 4**

Drawing Status	FINAL	Revisions	
JB No.	0010332	Date	July 2007
Figure No.	FIGURE 12.6a	Checked	SH
Scale	1:25,000	Approved	SH
Drawn	RB	Checked	JT







This map is based on Ordnance Survey material with the permission of Ordnance Survey on behalf of the controller of Her Majesty's Stationery Office © Crown copyright. Unauthorised reproduction infringes Crown copyright and may lead to prosecution or civil proceedings. Aberdeen City Council, 100023401 (2007).
 This drawing is not to be used in whole or part other than for the intended purpose and project as defined on this drawing. Refer to the contract for full terms and conditions. Maps produced by Jacobs UK Ltd. This map should NOT be rescaled. Copyright reserved.

FIGURE 12.6b



LEGEND

-  Proposed Route
(Engineering Profile 04/05/07)
-  Daytime Visual Envelope
-  Nighttime Visual Envelope
-  Day and Night Visual Envelope

Rev	Date	Purpose of Revision	Drwn	Chkd	Appd

JE JACOBS
 95 Bothwell Street, Glasgow, G2 7HX, UK
 Tel: 0141 204 2511 Fax: 0141 226 3109
 www.jacobsbatle.com

Client: **Aberdeen Western Peripheral Route**

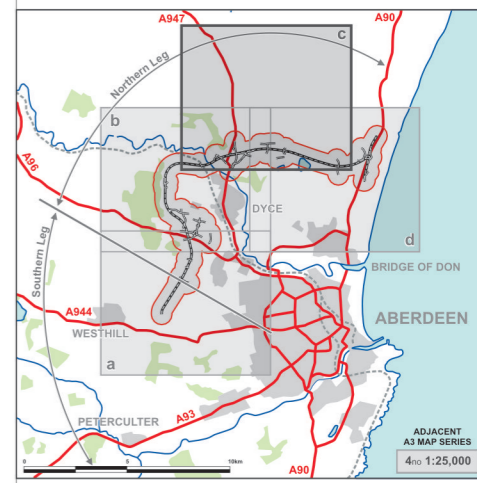
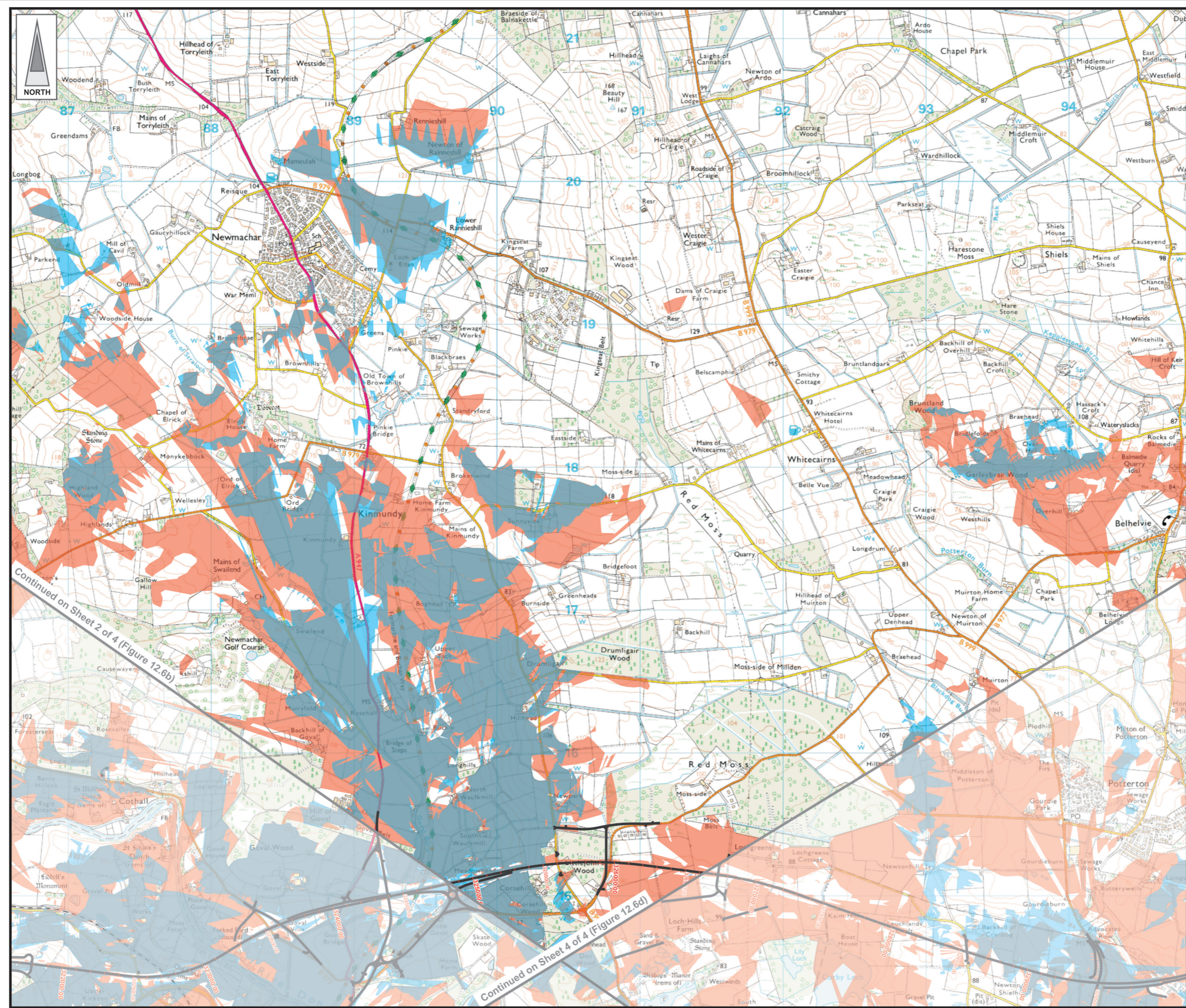
Project: **Aberdeen Western Peripheral Route Environmental Statement, Part B - Northern Leg**

Title: **Theoretical Visual Envelope Map (Summer 15 years after Opening - Day and Night) Sheet 2 of 4**





Drawing Status	FINAL	Revisions	
JB No.	0010332	Date	July 2007
Figure No.	FIGURE 12.6b	Checked	Approved
Scale	1:25,000	Drawn	SH

This map is based on Ordnance Survey material with the permission of Ordnance Survey on behalf of the controller of Her Majesty's Stationery Office © Crown copyright. Unauthorised reproduction infringes Crown copyright and may lead to prosecution or civil proceedings. Aberdeen City Council, 100023401 (2007).
 This drawing is not to be used in whole or part other than for the intended purpose and project as defined on this drawing. Refer to the contract for full terms and conditions. Maps produced by Jacobs UK Ltd. This map should NOT be rescaled. Copyright reserved.

FIGURE 12.6c



LEGEND

-  Proposed Route
(Engineering Profile 04/05/07)
-  Daytime Visual Envelope
-  Nighttime Visual Envelope
-  Day and Night Visual Envelope

Rev	Date	Purpose of Revision	Drwn	Chkd	Appd

JE JACOBS
 95 Bothwell Street, Glasgow, G2 7HX, UK
 Tel: 0141 204 2511 Fax: 0141 226 3109
 www.jacobsbabtie.com

Client: **Aberdeen Western Peripheral Route**

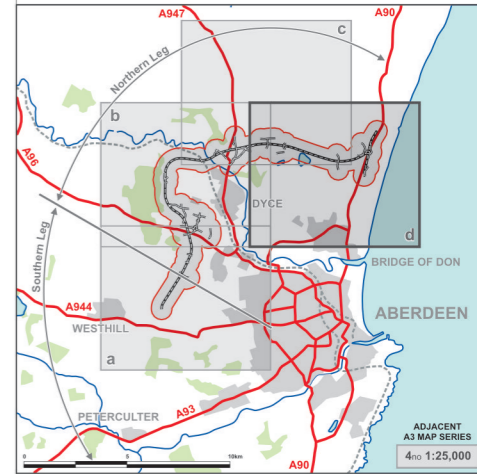
Project: **Aberdeen Western Peripheral Route Environmental Statement, Part B - Northern Leg**





Title: **Theoretical Visual Envelope Map (Summer 15 years after Opening - Day and Night) Sheet 3 of 4**

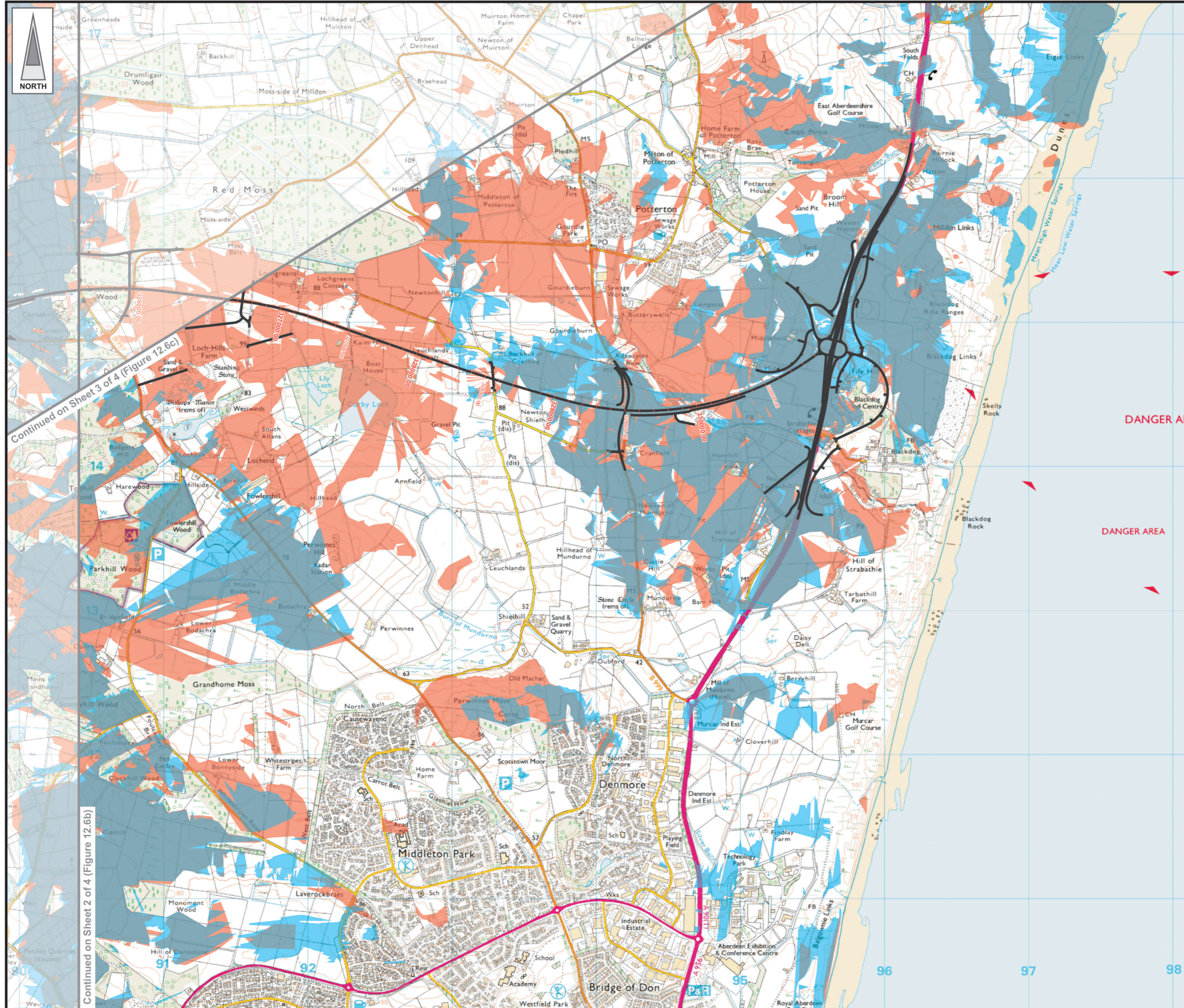
Drawing Status	FINAL	Revisions	
JB No.	0010332	Date	July 2007
Figure No.	FIGURE 12.6c	Approved	SH
Scale	1:25,000	Checked	JT
Drawn	RB	signature	

This map is based on Ordnance Survey material with the permission of Ordnance Survey on behalf of the controller of Her Majesty's Stationery Office © Crown copyright. Unauthorised reproduction infringes Crown copyright and may lead to prosecution or civil proceedings. Aberdeen City Council, 100023401 (2007).
 This drawing is not to be used in whole or part other than for the intended purpose and project as defined on this drawing. Refer to the contract for full terms and conditions. Maps produced by Jacobs UK Ltd. This map should NOT be rescaled. Copyright reserved.

FIGURE 12.6d



- LEGEND**
-  Proposed Route
(Engineering Profile 04/05/07)
 -  Daytime Visual Envelope
 -  Nighttime Visual Envelope
 -  Day and Night Visual Envelope



Continued on Sheet 3 of 4 (Figure 12.6c)

Continued on Sheet 2 of 4 (Figure 12.6b)

DANGER AREA
DANGER AREA

Rev	Date	Purpose of Revision	Drwn	Chkd	Appd

JE JACOBS
 95 Bothwell Street, Glasgow, G2 7HX, UK
 Tel: 0141 204 2511 Fax: 0141 226 3109
 www.jacobsbattle.com

Client: **Aberdeen Western Peripheral Route**

Project: **Aberdeen Western Peripheral Route Environmental Statement, Part B - Northern Leg**

Title: **Theoretical Visual Envelope Map (Summer 15 years after Opening - Day and Night) Sheet 4 of 4**

Drawing Status	FINAL	Revisions	
JB No.	0010332	Date	July 2007
Figure No.	FIGURE 12.6d	Approved	SH
Scale	1:25,000	Checked	JT
Drawn	RB		

This map is based on Ordnance Survey material with the permission of Ordnance Survey on behalf of the controller of Her Majesty's Stationery Office © Crown copyright. Unauthorised reproduction infringes Crown copyright and may lead to prosecution or civil proceedings. Aberdeen City Council, 100023401 (2007).
 This drawing is not to be used in whole or part other than for the intended purpose and project as defined on this drawing. Refer to the contract for full terms and conditions. Maps produced by Jacobs UK Ltd. This map should NOT be rescaled. Copyright reserved.