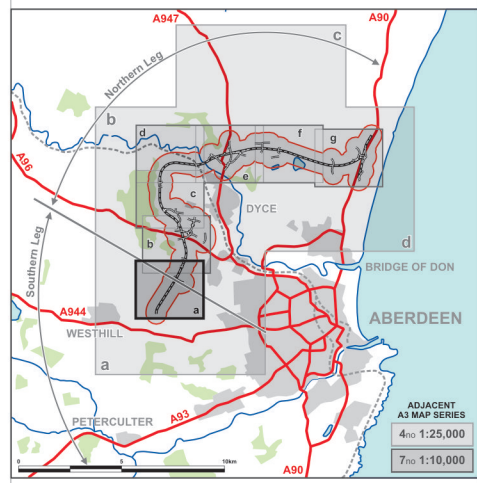
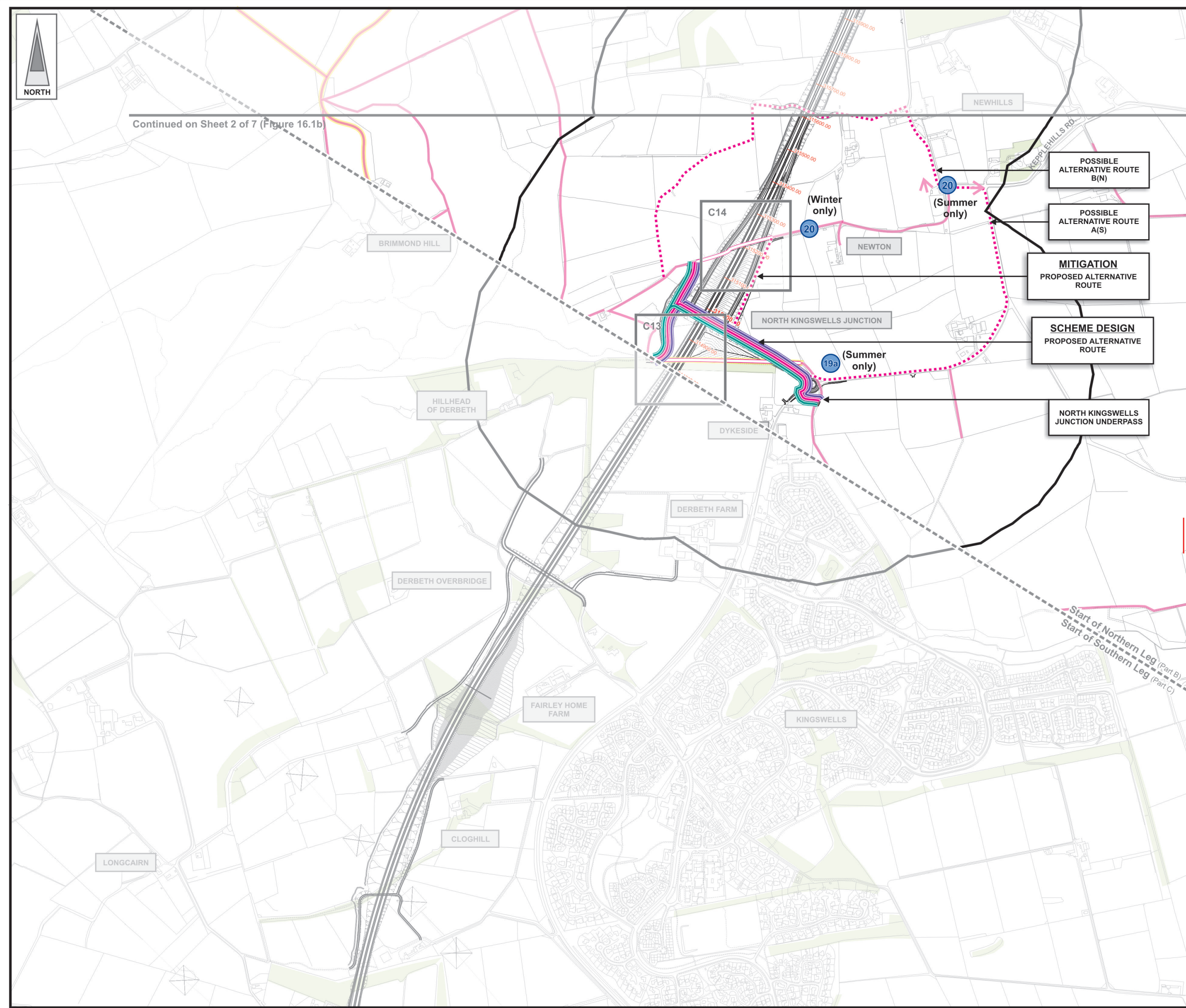


**FIGURE 16.1a**



**LEGEND**

- Proposed Route (Engineering Profile 04/05/2007)
- Minimum Study Area 500m from centre of Proposed Route
- Woodland
- Community Sites and Facilities
- Stable / Livery Yard

**Existing Routes**

- Pedestrian Routes/Right of Way
- Equestrian Routes
- Cycleway
- Count Locations
- Bus Stop Location
- Area of Conflict with Proposed AWPR Route

**Proposed Mitigation**

- Proposed Mitigation (pedestrian/cycle/equestrian)
- Proposed Alternative Route (pedestrian/cycle/equestrian)
- Possible Alternative Route (pedestrian/cycle/equestrian)
- Route lost to AWPR (pedestrian/cycle/equestrian)
- Bus Stop Lost to AWPR / Bus Stop Relocated

Rev	Date	Purpose of Revision	Drwn	Chkd	Appd

**JE JACOBS**  
 95 Bothwell Street, Glasgow, G2 7HX, UK  
 Tel: 0141 204 2511 Fax: 0141 226 3109  
 www.jacobsbabtie.com

Client: **Aberdeen Western Peripheral Route**

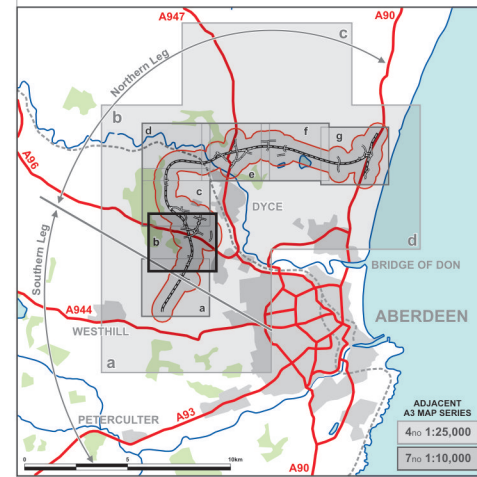
Project: **Aberdeen Western Peripheral Route Environmental Statement, Part B - Northern Leg**

Title: **Pedestrians, Cyclists and Equestrians Sheet 1 of 7**

Drawing Status	FINAL	Revisions	
JB No.	0010332	Date	July 2007
Figure No.	<b>FIGURE 16.1a</b>	Drawn	SHF/JKA
Scale	1:10,000	Checked	FB
		Approved	SH



**FIGURE 16.1b**



**LEGEND**

- Proposed Route (Engineering Profile 04/05/2007)
- Minimum Study Area 500m from centre of Proposed Route
- Woodland
- Community Sites and Facilities
- Stable / Livory Yard
- Existing Routes**
- Pedestrian Routes/Right of Way
- Equestrian Routes
- Cycleway
- Count Locations
- Bus Stop Location
- Area of Conflict with Proposed AWPR Route
- Proposed Mitigation**
- Proposed Mitigation (pedestrian/cycle/equestrian)
- Proposed Alternative Route (pedestrian/cycle/equestrian)
- Possible Alternative Route (pedestrian/cycle/equestrian)
- Route lost to AWPR (pedestrian/cycle/equestrian)
- Bus Stop Lost to AWPR / Bus Stop Relocated

Rev	Date	Purpose of Revision	Drawn	Chkd	Appd

**JE JACOBS**  
 95 Bothwell Street, Glasgow, G2 7HX, UK  
 Tel: 0141 204 2511 Fax: 0141 226 3109  
 www.jacobsbabtie.com

Client: **Aberdeen Western Peripheral Route**

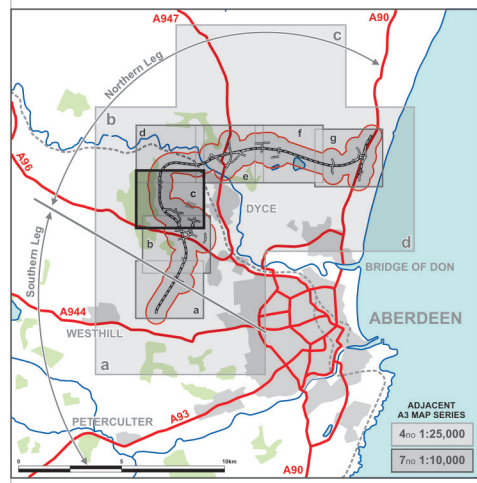
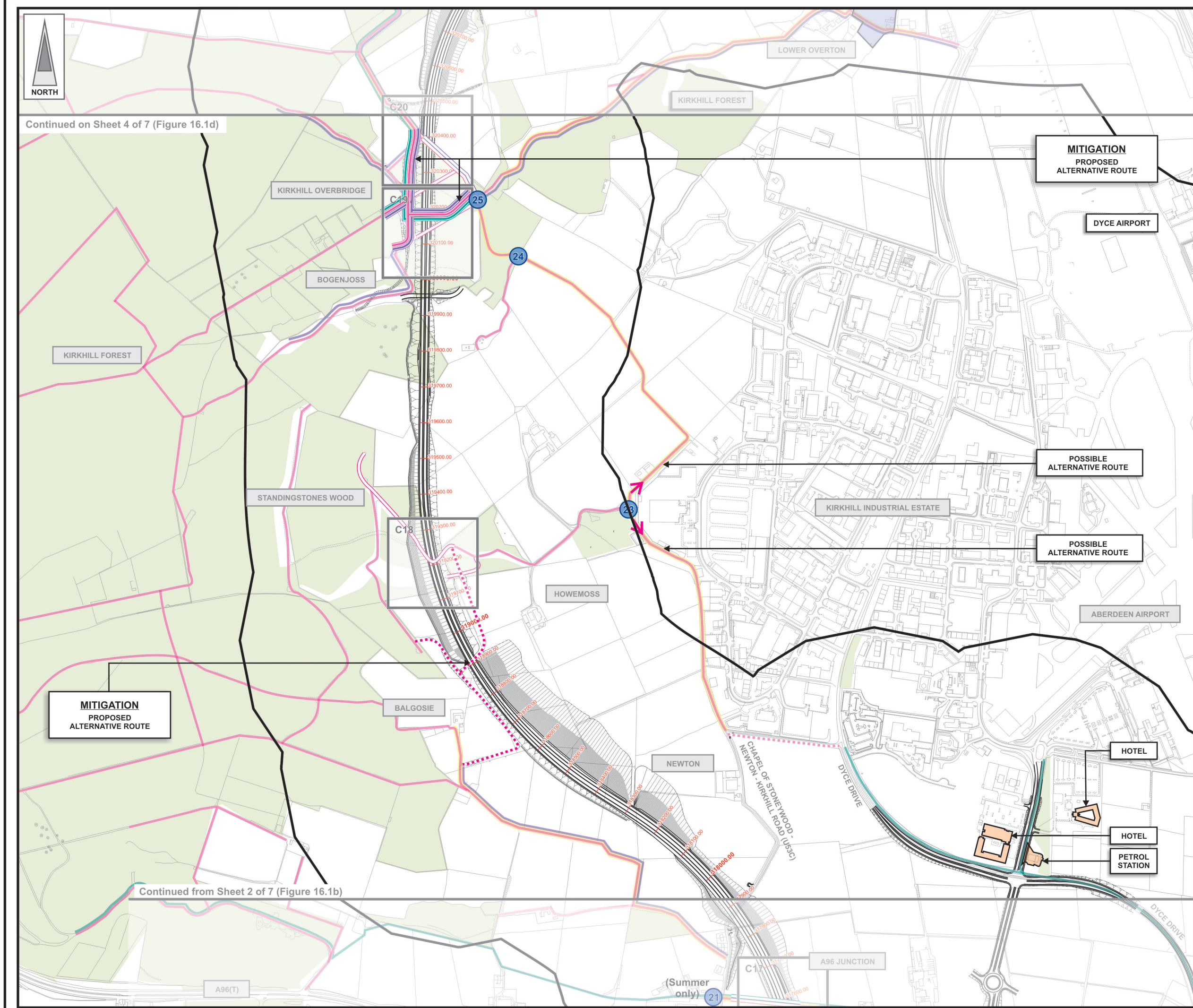
Project: **Aberdeen Western Peripheral Route Environmental Statement, Part B - Northern Leg**

Title: **Pedestrians, Cyclists and Equestrians Sheet 2 of 7**

Drawing Status	FINAL	Revisions	
JB No.	0010332	Date	July 2007
Figure No.	<b>FIGURE 16.1b</b>	Drawn	SHF/JKA
Scale	1:10,000	Checked	FB
		Approved	SH



FIGURE 16.1c



**LEGEND**

- Proposed Route (Engineering Profile 04/05/2007)
- Minimum Study Area 500m from centre of Proposed Route
- Woodland
- Community Sites and Facilities
- Stable / Liverty Yard

**Existing Routes**

- Pedestrian Routes/Right of Way
- Equestrian Routes
- Cycleway
- Count Locations
- Bus Stop Location
- Area of Conflict with Proposed AWPR Route

**Proposed Mitigation**

- Proposed Mitigation (pedestrian/cycle/equestrian)
- Proposed Alternative Route (pedestrian/cycle/equestrian)
- Possible Alternative Route (pedestrian/cycle/equestrian)
- Route lost to AWPR (pedestrian/cycle/equestrian)
- Bus Stop Lost to AWPR / Bus Stop Relocated

Rev	Date	Purpose of Revision	Drwn	Chkd	Appd

**JE JACOBS**  
 95 Bothwell Street, Glasgow, G2 7HX, UK  
 Tel: 0141 204 2511 Fax: 0141 226 3109  
 www.jacobsbabtie.com

Client: Aberdeen Western Peripheral Route

Project: Aberdeen Western Peripheral Route Environmental Statement, Part B - Northern Leg

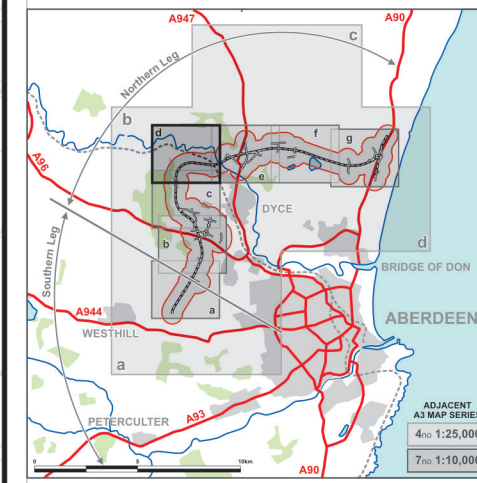
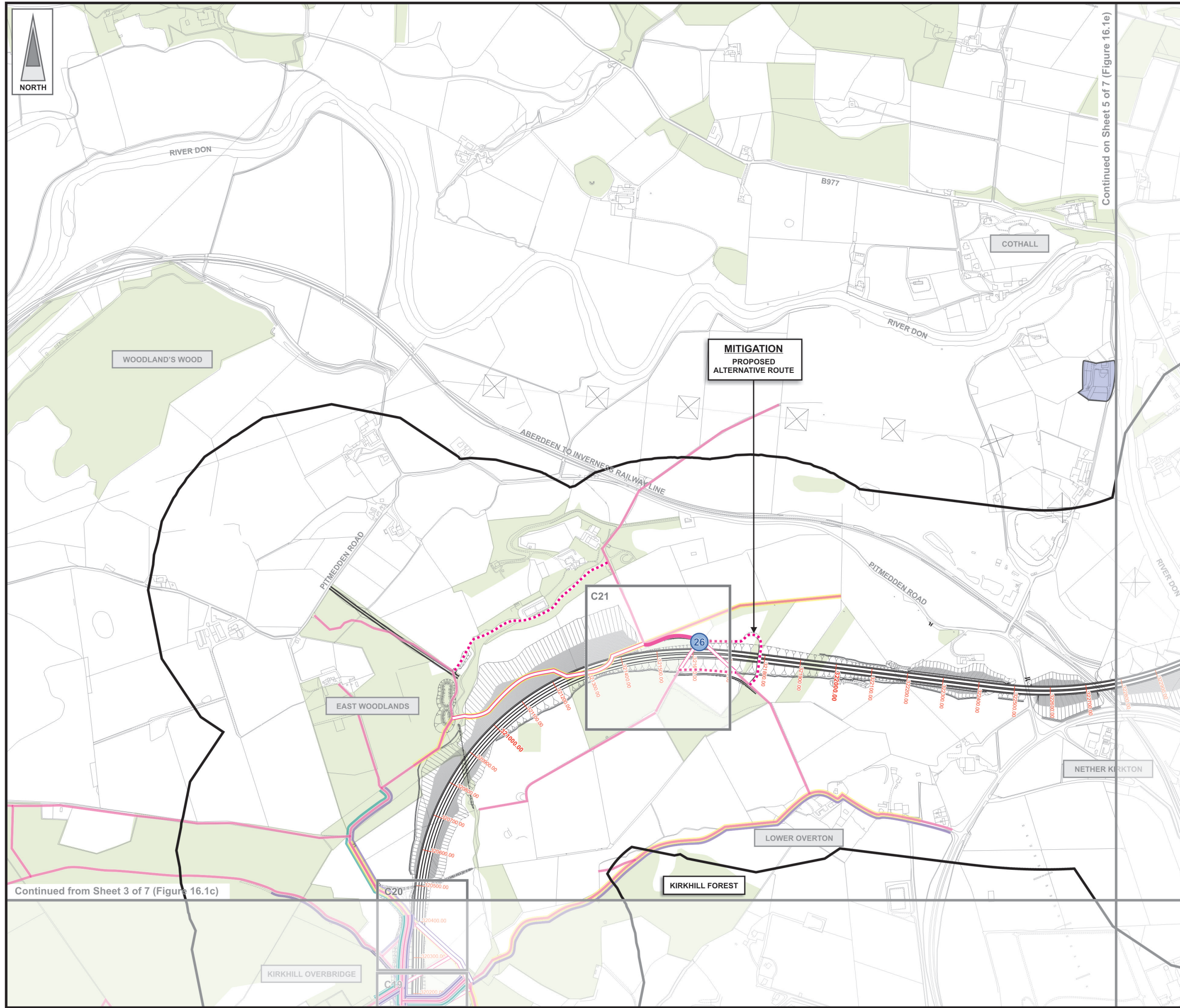
Title: Pedestrians, Cyclists and Equestrians Sheet 3 of 7

Drawing Status	FINAL	Revisions	
JB No.	0010332	Date	July 2007
Figure No.	FIGURE 16.1c	Drawn	SHFKA
Scale	1:10,000	Checked	FB
		Approved	SH

Based upon the Ordnance Survey mapping with the permission of Ordnance Survey on behalf of the Controller of Her Majesty's Stationery Office © Crown Copyright 2003. Unauthorised reproduction infringes Crown Copyright and may lead to prosecution or civil proceedings. Scottish Executive Licence number: SE100020540 (2007).



FIGURE 16.1d



- LEGEND**
- Proposed Route (Engineering Profile 04/05/2007)
  - Minimum Study Area 500m from centre of Proposed Route
  - Woodland
  - Community Sites and Facilities
  - Stable / Liverty Yard
- Existing Routes**
- Pedestrian Routes/Right of Way
  - Equestrian Routes
  - Cycleway
  - Count Locations
  - Bus Stop Location
  - Area of Conflict with Proposed AWPR Route
- Proposed Mitigation**
- Proposed Mitigation (pedestrian/cycle/equestrian)
  - Proposed Alternative Route (pedestrian/cycle/equestrian)
  - Possible Alternative Route (pedestrian/cycle/equestrian)
  - Route lost to AWPR (pedestrian/cycle/equestrian)
  - Bus Stop Lost to AWPR / Bus Stop Relocated

Rev	Date	Purpose of Revision	Drawn	Chkd	Appd

**JE JACOBS**  
 95 Bothwell Street, Glasgow, G2 7HX, UK  
 Tel: 0141 204 2511 Fax: 0141 226 3109  
 www.jacobsbabtie.com

Client: **Aberdeen Western Peripheral Route**

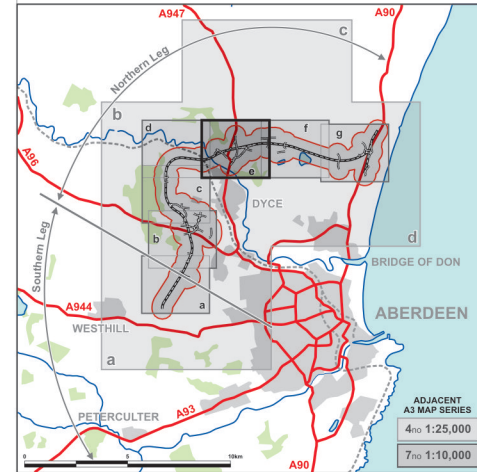
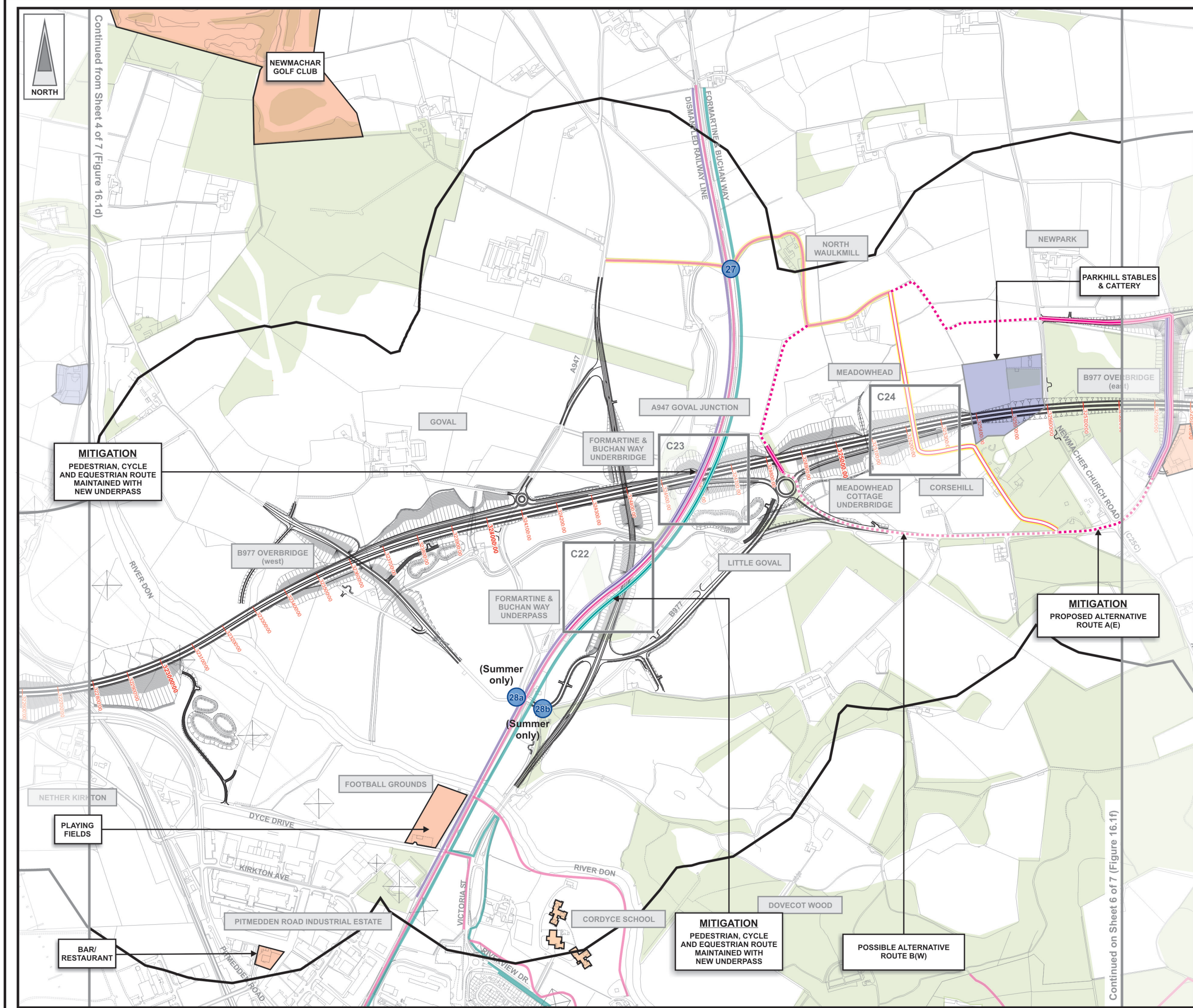
Project: **Aberdeen Western Peripheral Route Environmental Statement, Part B - Northern Leg**

Title: **Pedestrians, Cyclists and Equestrians Sheet 4 of 7**

Drawing Status	FINAL	Revisions	
JB No.	0010332	Date	July 2007
Figure No.	FIGURE 16.1d	Drawn	SHF/JKA
Scale	1:10,000	Checked	FB
		Approved	SH



FIGURE 16.1e



**LEGEND**

- Proposed Route (Engineering Profile 04/05/2007)
- Minimum Study Area 500m from centre of Proposed Route
- Woodland
- Community Sites and Facilities
- Stable / Livory Yard

**Existing Routes**

- Pedestrian Routes/Right of Way
- Equestrian Routes
- Cycleway
- Count Locations
- Bus Stop Location
- Area of Conflict with Proposed AWPR Route

**Proposed Mitigation**

- Proposed Mitigation (pedestrian/cycle/equestrian)
- Proposed Alternative Route (pedestrian/cycle/equestrian)
- Possible Alternative Route (pedestrian/cycle/equestrian)
- Route lost to AWPR (pedestrian/cycle/equestrian)
- Bus Stop Lost to AWPR / Bus Stop Relocated

Rev	Date	Purpose of Revision	Drwn	Chkd	Appd

**JE JACOBS**  
 95 Bothwell Street, Glasgow, G2 7HX, UK  
 Tel: 0141 204 2511 Fax: 0141 226 3109  
 www.jacobsbabtie.com

Client: Aberdeen Western Peripheral Route

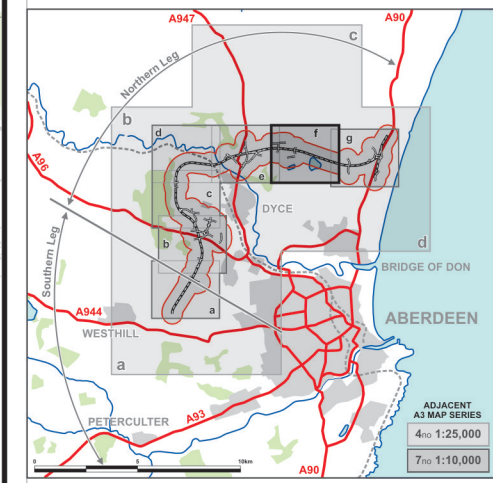
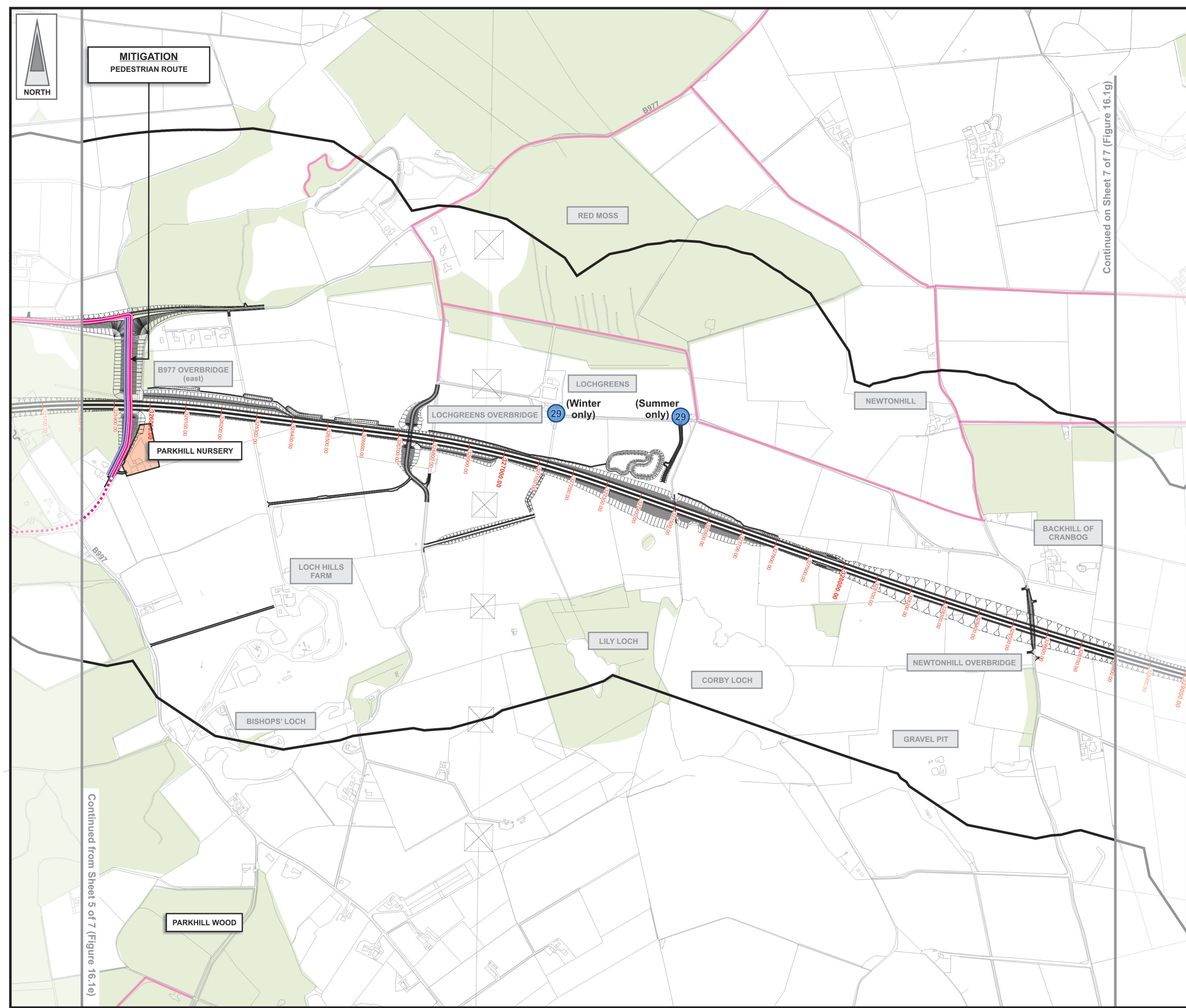
Project: Aberdeen Western Peripheral Route Environmental Statement, Part B - Northern Leg

Title: Pedestrians, Cyclists and Equestrians Sheet 5 of 7

Drawing Status	FINAL	Revisions	
JB No.	0010332	Date	July 2007
Figure No.	FIGURE 16.1e	Drawn	SHF/JKA
Scale	1:10,000	Checked	FB
		Approved	SH



FIGURE 16.1f



**LEGEND**

- Proposed Route (Engineering Profile 04/05/2007)
- Minimum Study Area (500m from centre of Proposed Route)
- Woodland
- Community Sites and Facilities
- Stable / Livory Yard

**Existing Routes**

- Pedestrian Routes/Right of Way
- Equestrian Routes
- Cycleway
- Count Locations
- Bus Stop Location
- Area of Conflict with Proposed AWPR Route

**Proposed Mitigation**

- Proposed Mitigation (pedestrian/cycle/equestrian)
- Proposed Alternative Route (pedestrian/cycle/equestrian)
- Possible Alternative Route (pedestrian/cycle/equestrian)
- Route lost to AWPR (pedestrian/cycle/equestrian)
- Bus Stop Lost to AWPR / Bus Stop Relocated

Rev	Date	Purpose of Revision	Drwn	Chkd	Appd

**JE JACOBS**  
 95 Bothwell Street, Glasgow, G2 7HX, UK  
 Tel: 0141 204 2511 Fax: 0141 226 3109  
 www.jacobsbabtie.com

Client: **Aberdeen Western Peripheral Route**

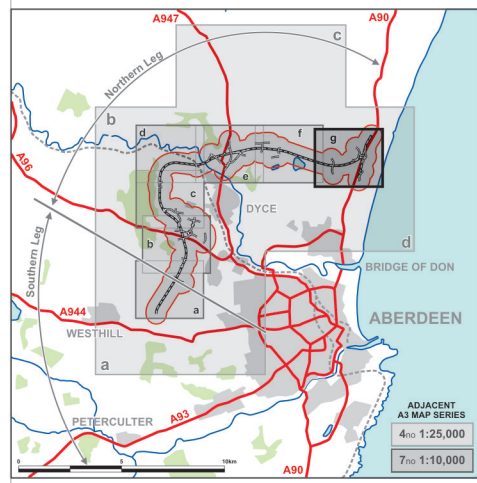
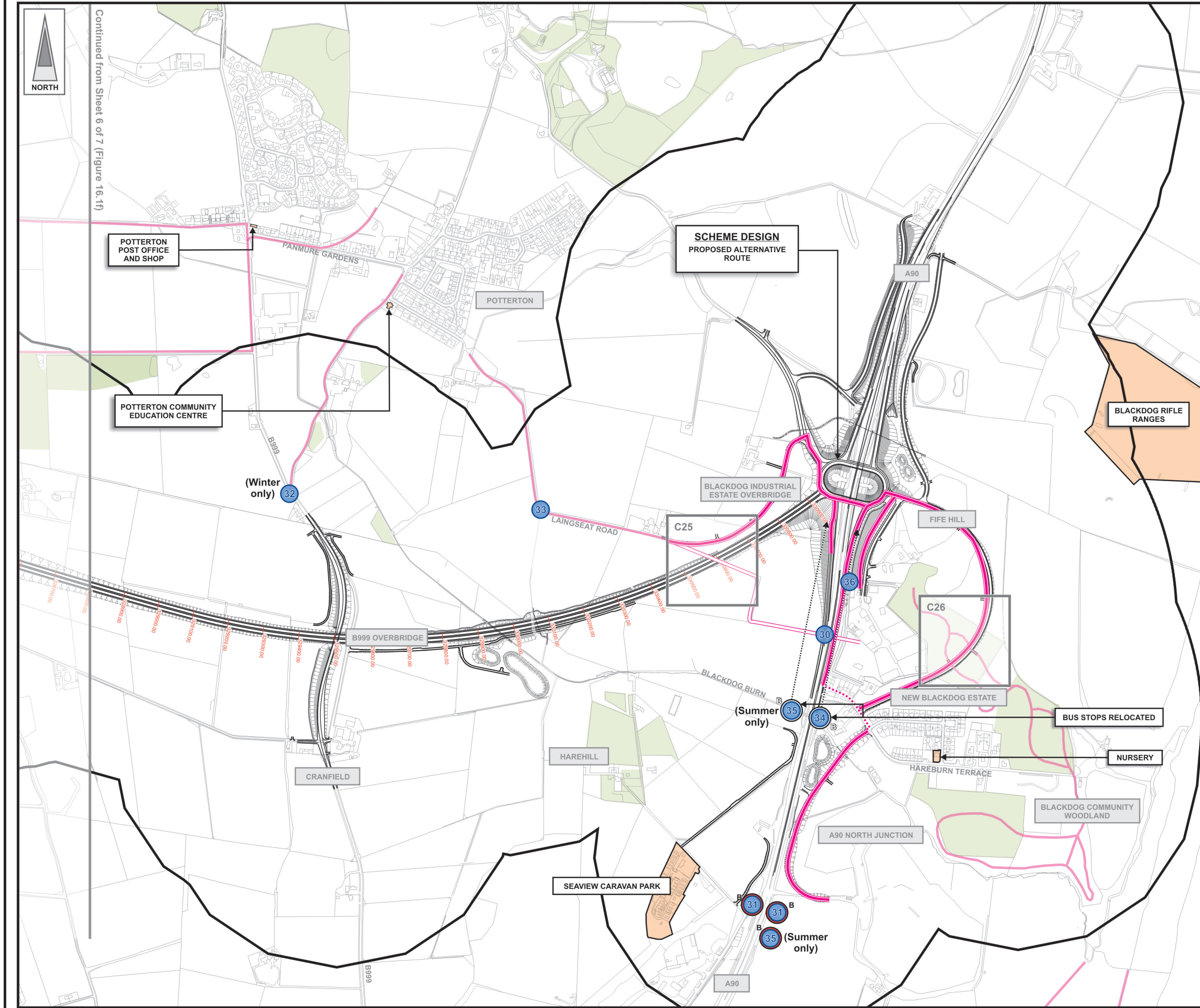
Project: **Aberdeen Western Peripheral Route Environmental Statement, Part B - Northern Leg**

Title: **Pedestrians, Cyclists and Equestrians Sheet 6 of 7**

Drawing Status	FINAL	Revisions	
JB No.	0010332	Date	July 2007
Figure No.	FIGURE 16.1f	Approved	SH
Scale	1:10,000	Checked	FB
Drawn	SHF/JKA	signature	



FIGURE 16.1g



**LEGEND**

- Proposed Route (Engineering Profile 04/05/2007)
- Minimum Study Area 500m from centre of Proposed Route
- Woodland
- Community Sites and Facilities
- Stable / Livory Yard

**Existing Routes**

- Pedestrian Routes/Right of Way
- Equestrian Routes
- Cycleway
- Count Locations
- Bus Stop Location
- Area of Conflict with Proposed AWPR Route

**Proposed Mitigation**

- Proposed Mitigation (pedestrian/cycle/equestrian)
- Proposed Alternative Route (pedestrian/cycle/equestrian)
- Possible Alternative Route (pedestrian/cycle/equestrian)
- Route lost to AWPR (pedestrian/cycle/equestrian)
- Bus Stop Lost to AWPR / Bus Stop Relocated

Rev	Date	Purpose of Revision	Drwn	Chkd	Appd

**JE JACOBS**  
 95 Bothwell Street, Glasgow, G2 7HX, UK  
 Tel: 0141 204 2511 Fax: 0141 226 3109  
 www.jacobsbabtie.com

Client: Aberdeen Western Peripheral Route

Project: Aberdeen Western Peripheral Route Environmental Statement, Part B - Northern Leg

Title: Pedestrians, Cyclists and Equestrians Sheet 7 of 7

Drawing Status	FINAL	Revisions	
JB No.	0010332	Date	July 2007
Figure No.	FIGURE 16.1g	Drawn	SHF/JKA
Scale	1:10,000	Checked	FB
		Approved	SH

Based upon the Ordnance Survey mapping with the permission of Ordnance Survey on behalf of the Controller of Her Majesty's Stationery Office © Crown Copyright 2003. Unauthorised reproduction infringes Crown Copyright and may lead to prosecution or civil proceedings. Scottish Executive Licence number: SE100020540 (2007).