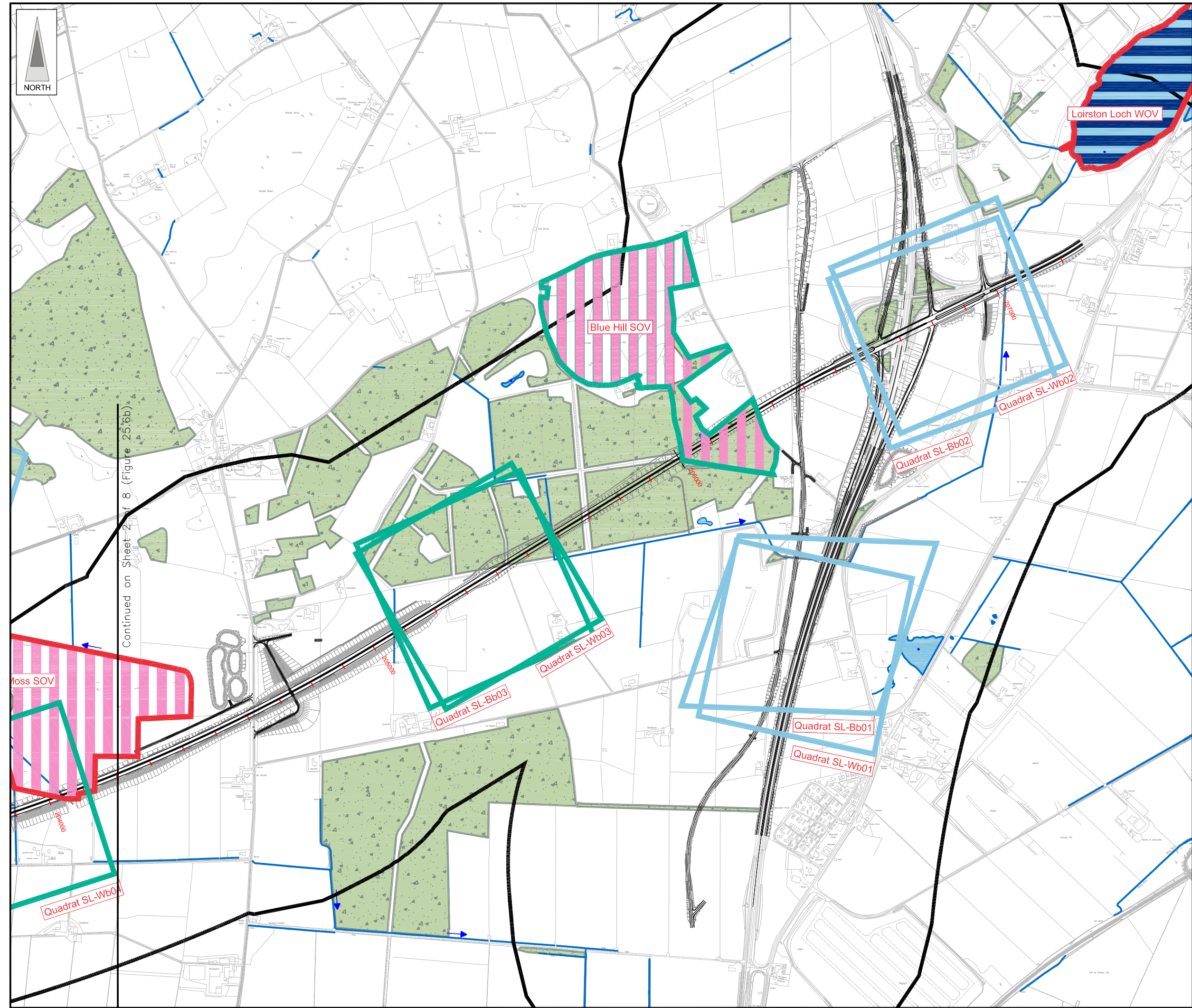
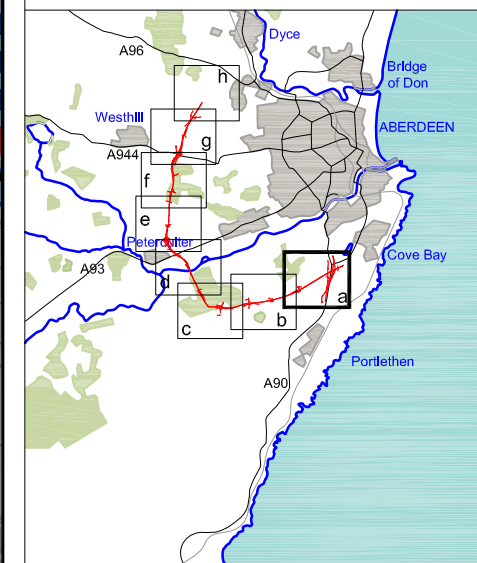


FIGURE 25.6a



LEGEND

- Proposed Route (Engineering Profile 04/05/07)
- Indicative Study Area (500m from centre of Proposed Route)
- Watercourses
- Direction of Flow
- Waterbody
- Woodland

Breeding Bird Survey : Quadrats*

- High Habitat Value
- Medium Habitat Value
- Low Habitat Value

Breeding Bird Survey : Sites of Ornithological Value

- High Habitat Value
- Medium Habitat Value
- Low Habitat Value

Wintering Bird Survey : Quadrats

- High Habitat Value
- Medium Habitat Value
- Low Habitat Value

Wintering Bird Survey : Waterbodies of Ornithological Value

- High Habitat Value

*Seasonal Breeding Bird Surveys are ongoing & due for completion in June 2007

Rev	Date	Purpose of Revision	Drwn	Chkd	Appd

JE JACOBS
 95 Bothwell Street, Glasgow, G2 7HX, UK
 Tel: 0141 204 2511 Fax: 0141 226 3109
 www.jacobsbattle.com

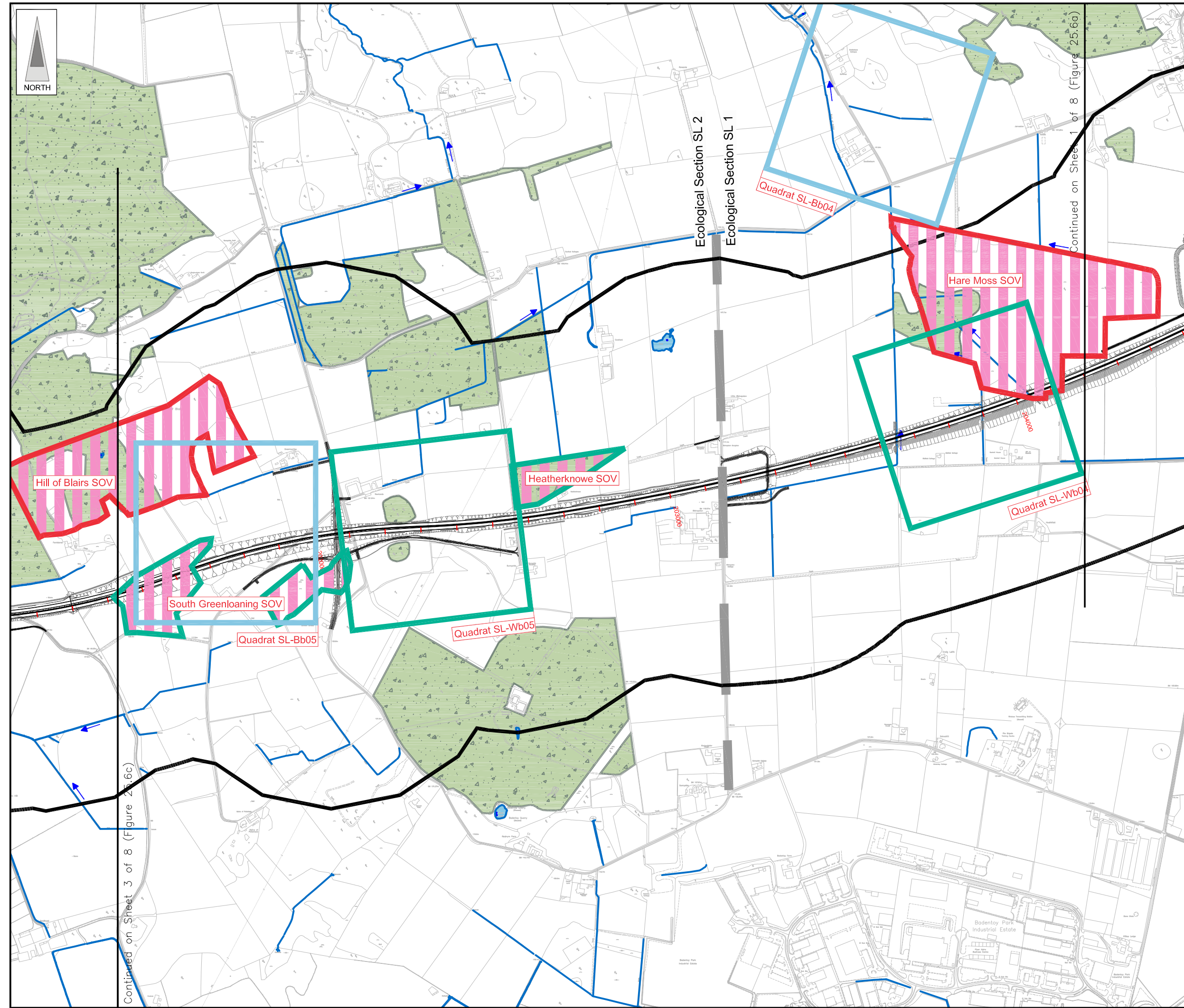
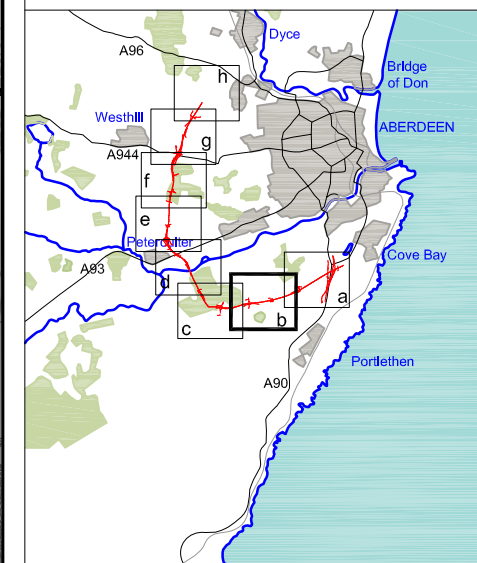
Client: **Aberdeen Western Peripheral Route**

Project: **Aberdeen Western Peripheral Route
 Environmental Statement, Part C - Southern Leg**

Title: **Breeding & Wintering Bird Surveys
 Sheet 1 of 8**

Drawing Status	FINAL	Revisions	
JB No.	0010332	Date	July 2007
Figure No.	FIGURE 25.6a	Checked	GR
Scale	1:10,000	Approved	SH
Drawn	SHF		

FIGURE 25.6b



LEGEND

- Proposed Route (Engineering Profile 04/05/07)
- Indicative Study Area (500m from centre of Proposed Route)
- Watercourses
- Direction of Flow
- Waterbody
- Woodland

Breeding Bird Survey : Quadrats*

- High Habitat Value
- Medium Habitat Value
- Low Habitat Value

Breeding Bird Survey : Sites of Ornithological Value

- High Habitat Value
- Medium Habitat Value
- Low Habitat Value

Wintering Bird Survey : Quadrats

- High Habitat Value
- Medium Habitat Value
- Low Habitat Value

Wintering Bird Survey : Waterbodies of Ornithological Value

- High Habitat Value

*Seasonal Breeding Bird Surveys are ongoing & due for completion in June 2007

Rev	Date	Purpose of Revision	Drwn	Chkd	Appd

JE JACOBS
 95 Bothwell Street, Glasgow, G2 7HX, UK
 Tel: 0141 204 2511 Fax: 0141 226 3109
 www.jacobsbattle.com

Client: **Aberdeen Western Peripheral Route**

Project: **Aberdeen Western Peripheral Route Environmental Statement, Part C - Southern Leg**

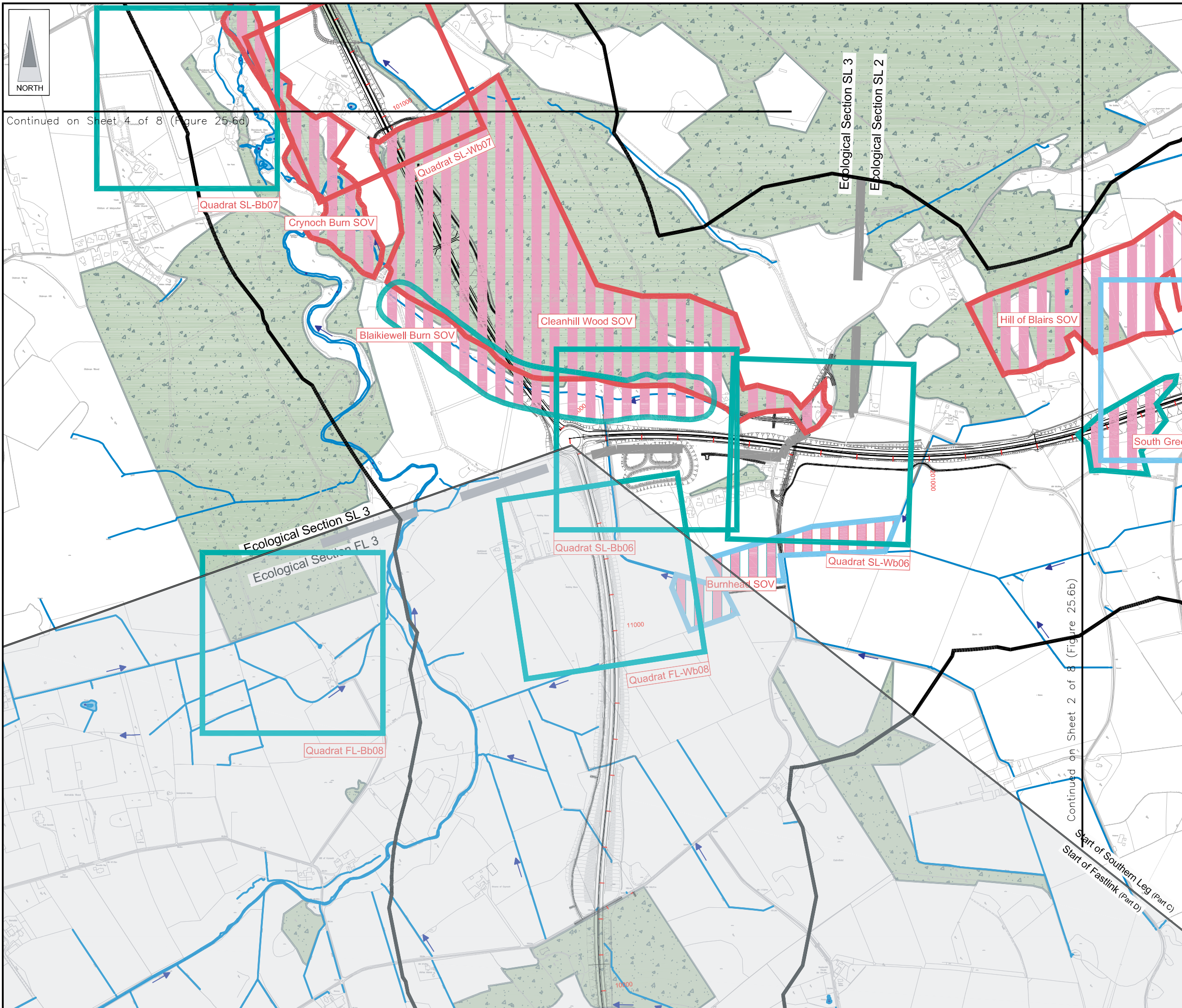
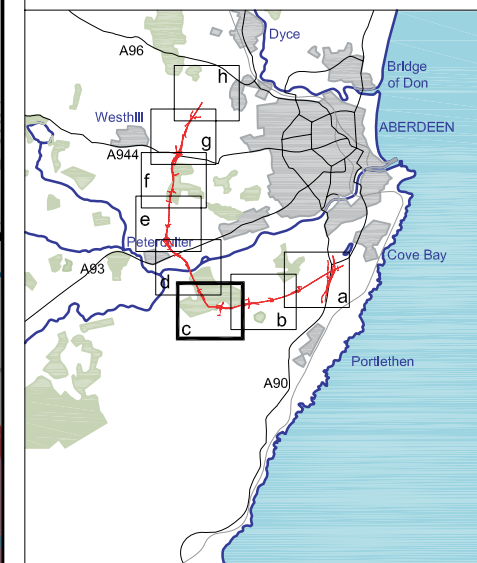
Title: **Breeding & Wintering Bird Surveys Sheet 2 of 8**

Drawing Status	FINAL	Revisions	
JB No.	0010332	Date	July 2007
Figure No.	FIGURE 25.6b	Drawn	SHF
Scale	1:10,000	Checked	GR
		Approved	SH

This drawing is not to be used in whole or part other than for the intended purpose and project as defined on this drawing. Refer to the contract for full terms and conditions. Maps produced by Jacobs UK Ltd. This map should NOT be rescaled. Copyright reserved.

This map is based on Ordnance Survey material with the permission of Ordnance Survey on behalf of the controller of Her Majesty's Stationary Office. Crown copyright. Unauthorised reproduction infringes Crown copyright and may lead to prosecution or civil proceedings. Scottish Executive Licence Number, 100020540 (2007).

FIGURE 25.6c



LEGEND

- Proposed Route (Engineering Profile 04/05/07)
- Indicative Study Area (500m from centre of Proposed Route)
- Watercourses
- Direction of Flow
- Waterbody
- Woodland

Breeding Bird Survey : Quadrats*

- High Habitat Value
- Medium Habitat Value
- Low Habitat Value

Breeding Bird Survey : Sites of Ornithological Value

- High Habitat Value
- Medium Habitat Value
- Low Habitat Value

Wintering Bird Survey : Quadrats

- High Habitat Value
- Medium Habitat Value
- Low Habitat Value

Wintering Bird Survey : Waterbodies of Ornithological Value

- High Habitat Value

*Seasonal Breeding Bird Surveys are ongoing & due for completion in June 2007

Rev	Date	Purpose of Revision	Drwn	Chkd	Appd

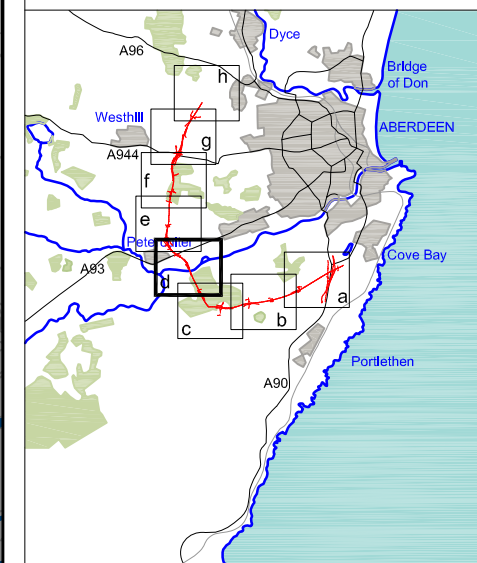
JE JACOBS
 95 Bothwell Street, Glasgow, G2 7HX, UK
 Tel: 0141 204 2511 Fax: 0141 226 3109
 www.jacobstabtie.com

Client					
Project	Aberdeen Western Peripheral Route Environmental Statement, Part C - Southern Leg				
Title	Breeding & Wintering Bird Surveys Sheet 3 of 8				

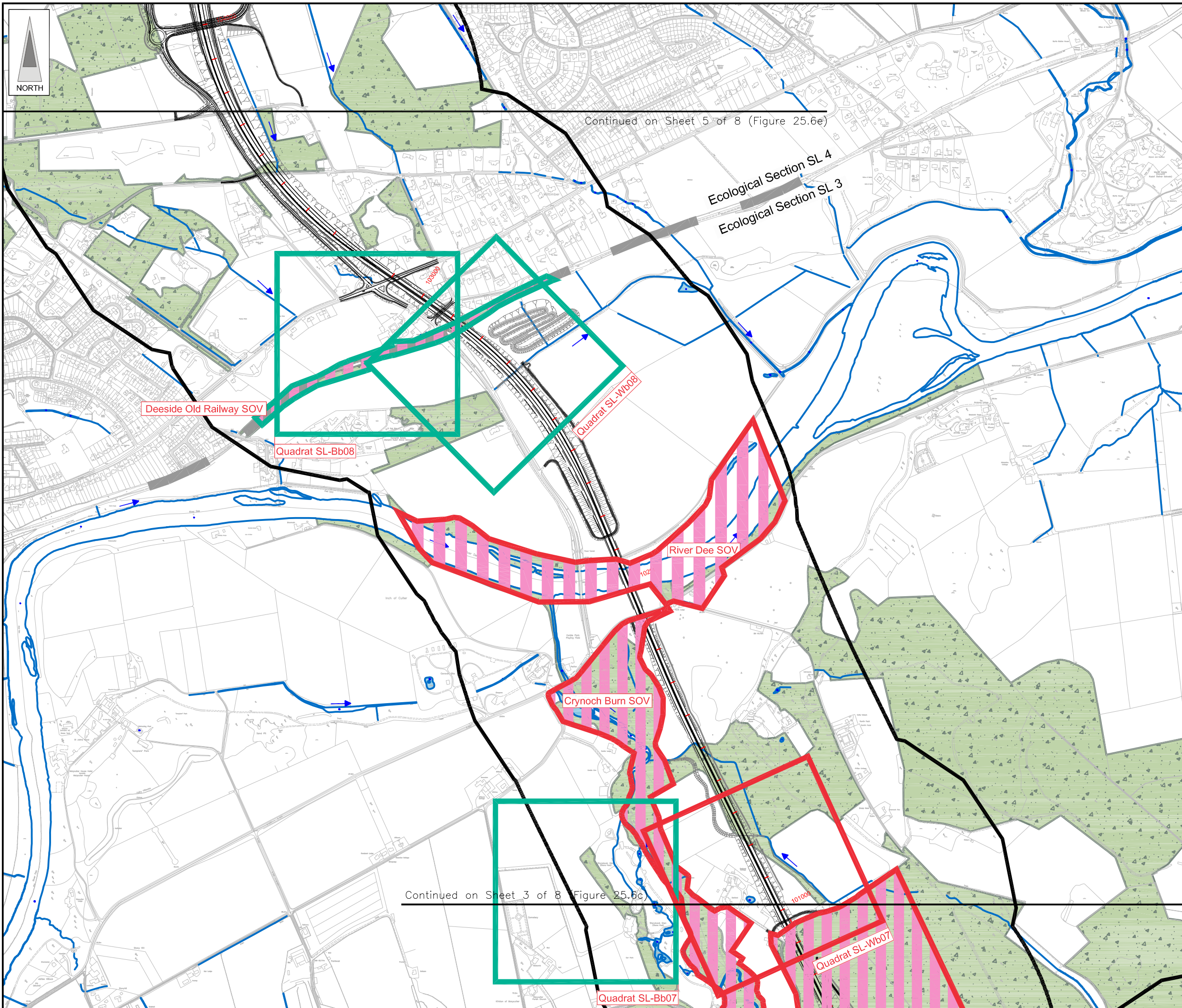
Drawing Status	FINAL	Revisions			
JB No.	0010332				
Figure No.	FIGURE 25.6c				
Scale	1:10,000	Date	July 2007		
Drawn	SHF	Checked	GR	Approved	SH

This map is based on Ordnance Survey material with the permission of Ordnance Survey on behalf of the controller of Her Majesty's Stationary Office. Crown copyright. Unauthorised reproduction infringes Crown copyright and may lead to prosecution or civil proceedings. Scottish Executive Licence Number, 100020540 (2007).
 This drawing is not to be used in whole or part other than for the intended purpose and project as defined on this drawing. Refer to the contract for full terms and conditions. Maps produced by Jacobs UK Ltd. This map should NOT be rescaled. Copyright reserved.

FIGURE 25.6d



Continued on Sheet 5 of 8 (Figure 25.6e)



Continued on Sheet 3 of 8 (Figure 25.6c)

- LEGEND**
- Proposed Route (Engineering Profile 04/05/07)
 - Indicative Study Area (500m from centre of Proposed Route)
 - Watercourses
 - Direction of Flow
 - Waterbody
 - Woodland
- Breeding Bird Survey : Quadrats***
- High Habitat Value
 - Medium Habitat Value
 - Low Habitat Value
- Breeding Bird Survey : Sites of Ornithological Value**
- High Habitat Value
 - Medium Habitat Value
 - Low Habitat Value
- Wintering Bird Survey : Quadrats**
- High Habitat Value
 - Medium Habitat Value
 - Low Habitat Value
- Wintering Bird Survey : Waterbodies of Ornithological Value**
- High Habitat Value
- *Seasonal Breeding Bird Surveys are ongoing & due for completion in June 2007

Rev	Date	Purpose of Revision	Drwn	Chkd	Appd

JE JACOBS
 95 Bothwell Street, Glasgow, G2 7HX, UK
 Tel: 0141 204 2511 Fax: 0141 226 3109
 www.jacobstabble.com

Client: Aberdeen Western Peripheral Route

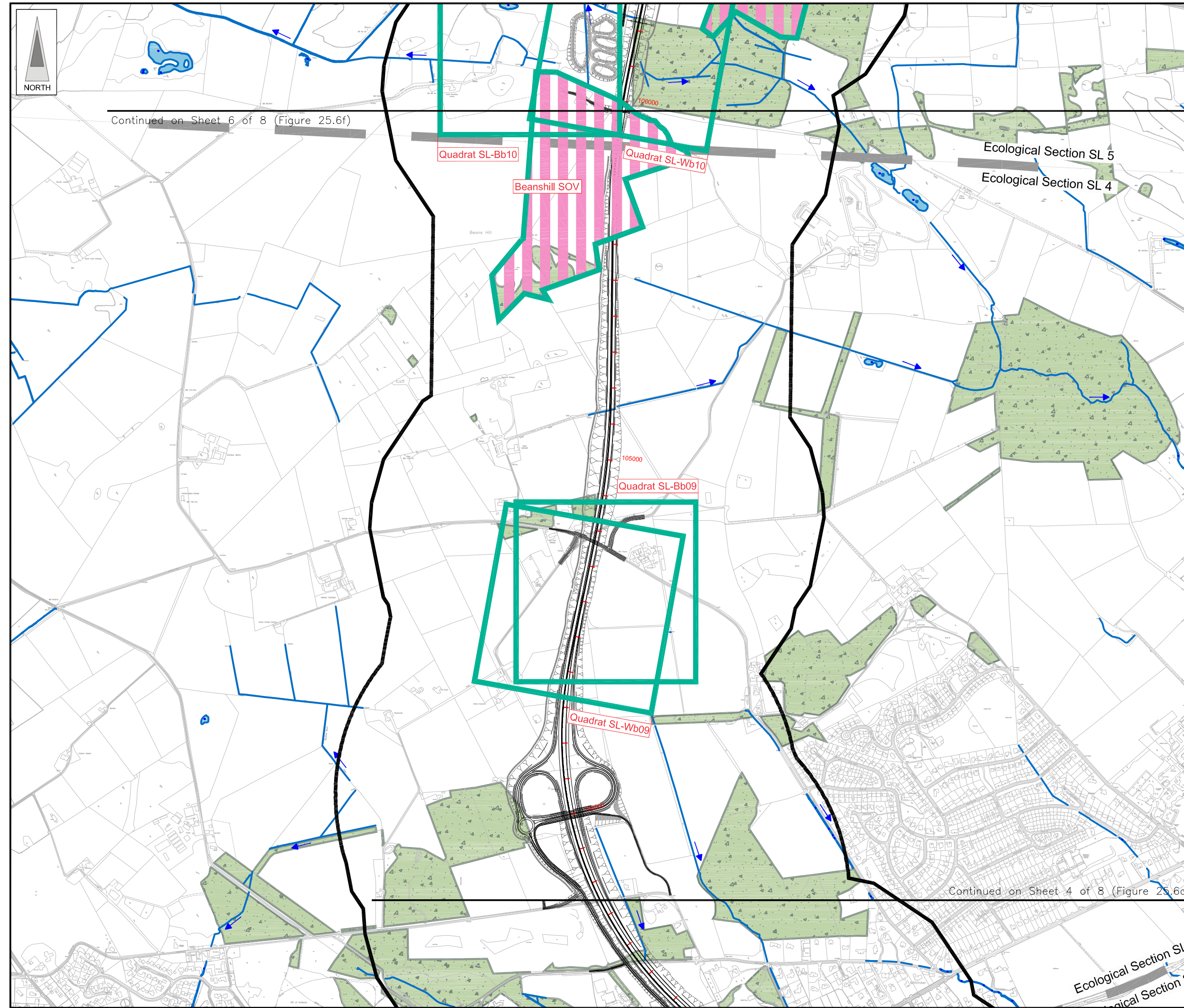
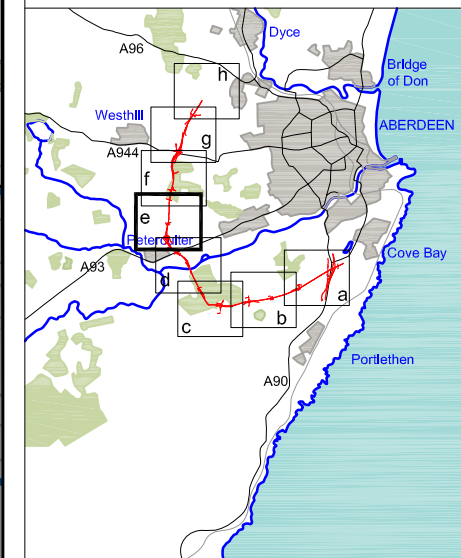
Project: Aberdeen Western Peripheral Route
 Environmental Statement, Part C - Southern Leg

Title: Breeding & Wintering Bird Surveys
 Sheet 4 of 8

Drawing Status	FINAL	Revisions	
JB No.	0010332	Date	July 2007
Figure No.	FIGURE 25.6d	Checked	GR
Scale	1:10,000	Approved	SH
Drawn	SHF		

This map is based on Ordnance Survey material with the permission of Ordnance Survey on behalf of the controller of Her Majesty's Stationary Office. Unauthorised reproduction infringes Crown copyright and may lead to prosecution or civil proceedings. Scottish Executive Licence Number, 100020540 (2007). Maps produced by Jacobs UK Ltd. This map should NOT be rescaled. Copyright reserved.

FIGURE 25.6e



- LEGEND**
- Proposed Route (Engineering Profile 04/05/07)
 - Indicative Study Area (500m from centre of Proposed Route)
 - Watercourses
 - Direction of Flow
 - Waterbody
 - Woodland
- Breeding Bird Survey : Quadrats***
- High Habitat Value
 - Medium Habitat Value
 - Low Habitat Value
- Breeding Bird Survey : Sites of Ornithological Value**
- High Habitat Value
 - Medium Habitat Value
 - Low Habitat Value
- Wintering Bird Survey : Quadrats**
- High Habitat Value
 - Medium Habitat Value
 - Low Habitat Value
- Wintering Bird Survey : Waterbodies of Ornithological Value**
- High Habitat Value
- *Seasonal Breeding Bird Surveys are ongoing & due for completion in June 2007

Rev	Date	Purpose of Revision	Drwn	Chkd	Appd

JE JACOBS
 95 Bothwell Street, Glasgow, G2 7HX, UK
 Tel: 0141 204 2511 Fax: 0141 226 3109
 www.jacobstablie.com

Client: **Aberdeen Western Peripheral Route**

Project: **Aberdeen Western Peripheral Route Environmental Statement, Part C - Southern Leg**

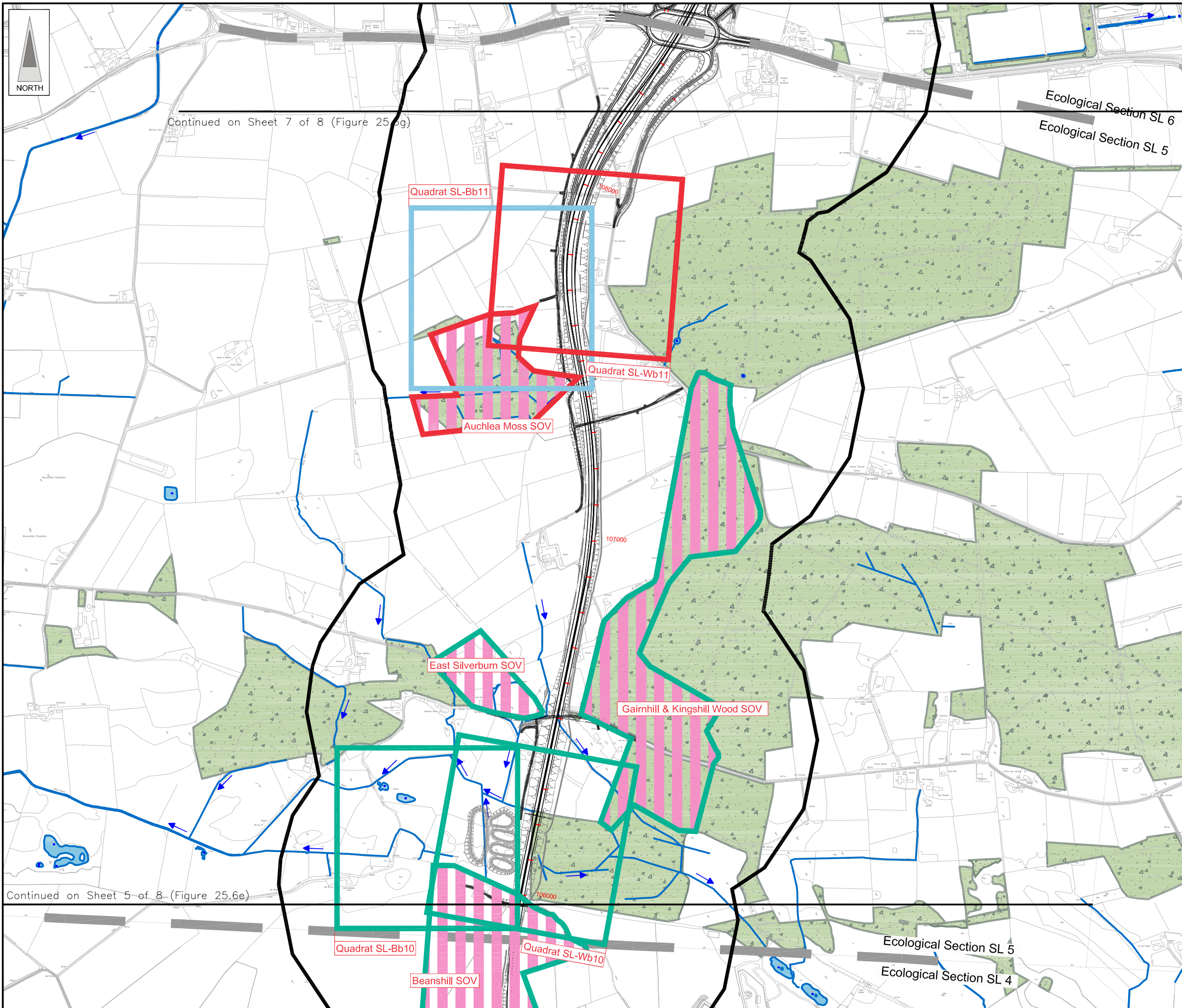
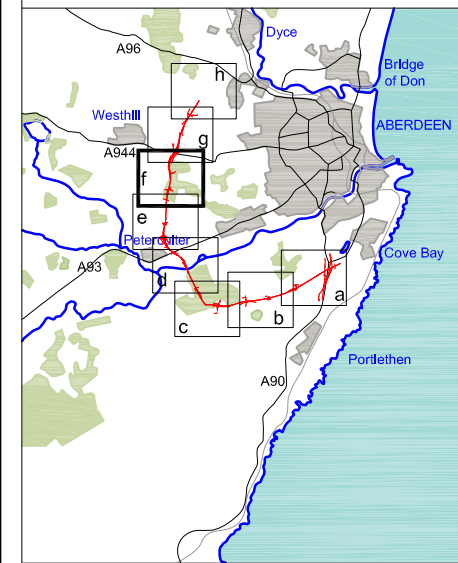
Title: **Breeding & Wintering Bird Surveys Sheet 5 of 8**

Drawing Status	FINAL	Revisions	
JB No.	0010332	Date	July 2007
Figure No.	FIGURE 25.6e	Approved	SH
Scale	1:10,000	Checked	GR
Drawn	SHF		

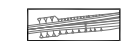
This drawing is not to be used in whole or part other than for the intended purpose and project as defined on this drawing. Refer to the contract for full terms and conditions. Maps produced by Jacobs UK Ltd. This map should NOT be rescaled. Copyright reserved.

This map is based on Ordnance Survey material with the permission of Ordnance Survey on behalf of the controller of Her Majesty's Stationary Office. Crown copyright. Unauthorised reproduction infringes Crown copyright and may lead to prosecution or civil proceedings. Scottish Executive Licence Number, 100020540 (2007).

FIGURE 25.6f



LEGEND

-  Proposed Route
(Engineering Profile 04/05/07)
-  Indicative Study Area
(500m from centre of Proposed Route)
-  Watercourses
-  Direction of Flow
-  Waterbody
-  Woodland
- Breeding Bird Survey : Quadrats***
-  High Habitat Value
-  Medium Habitat Value
-  Low Habitat Value
- Breeding Bird Survey : Sites of Ornithological Value**
-  High Habitat Value
-  Medium Habitat Value
-  Low Habitat Value
- Wintering Bird Survey : Quadrats**
-  High Habitat Value
-  Medium Habitat Value
-  Low Habitat Value
- Wintering Bird Survey : Waterbodies of Ornithological Value**
-  High Habitat Value

*Seasonal Breeding Bird Surveys are ongoing & due for completion in June 2007

Rev	Date	Purpose of Revision	Drwn	Chkd	Appd

JE JACOBS
 95 Bothwell Street, Glasgow, G2 7HX, UK
 Tel: 0141 204 2511 Fax: 0141 226 3109
 www.jacobsabbie.com

Client: **Aberdeen Western Peripheral Route**

Project: **Aberdeen Western Peripheral Route
 Environmental Statement, Part C - Southern Leg**

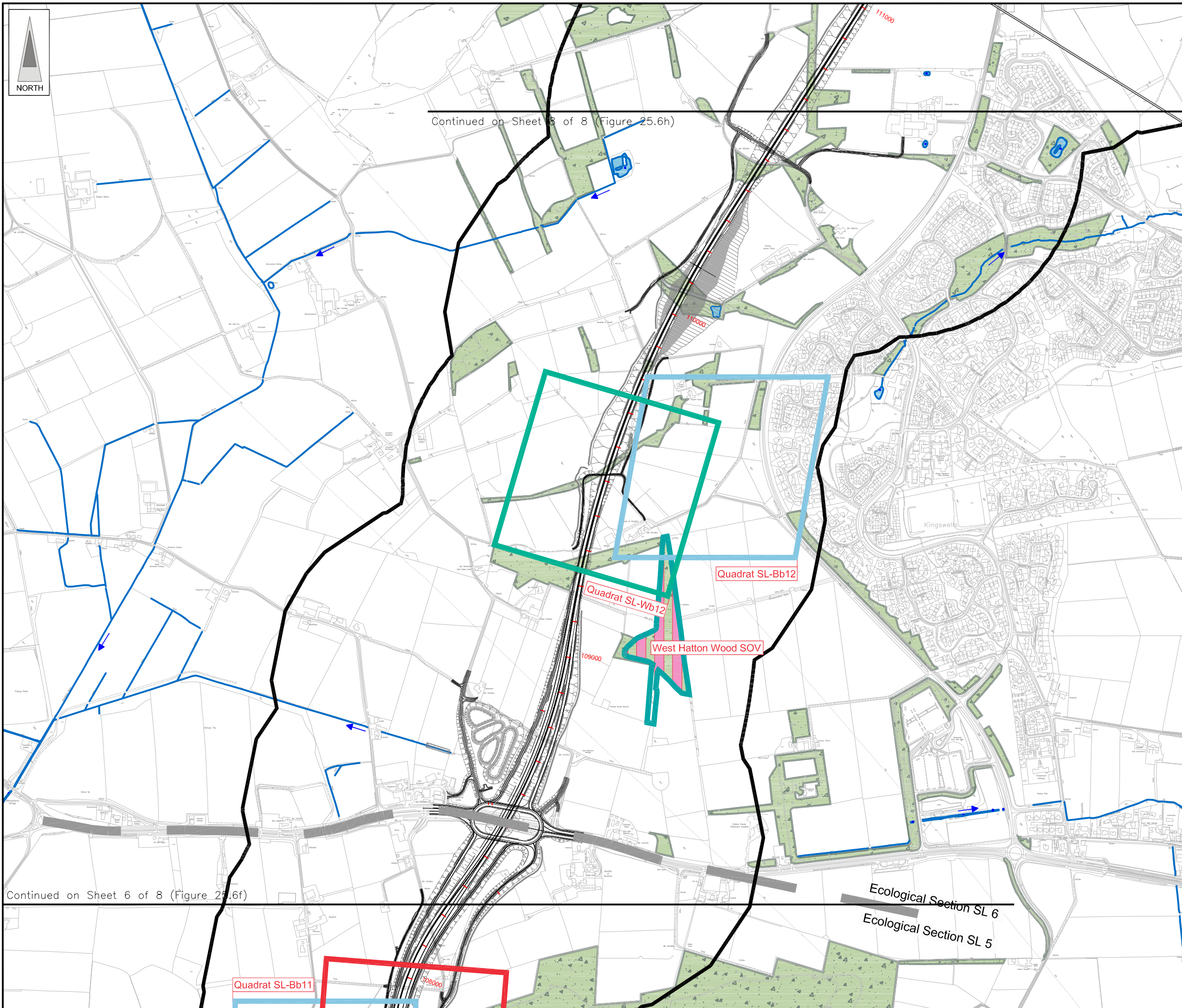
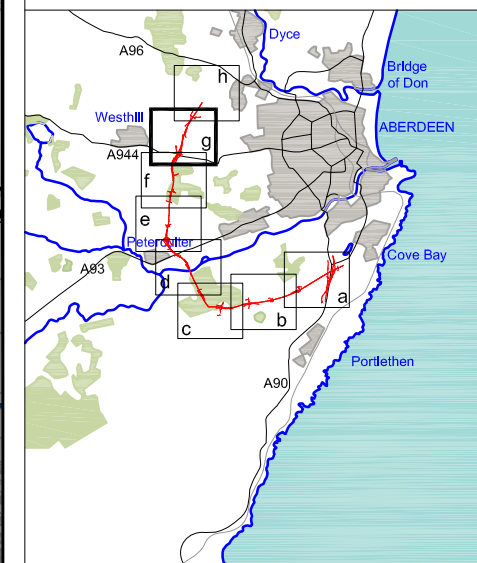
Title: **Breeding & Wintering Bird Surveys
 Sheet 6 of 8**

Drawing Status: FINAL	Revisions
JB No. 0010332	Date July 2007
Figure No. FIGURE 25.6f	Approved SH
Scale 1:10,000	Checked GR
Drawn SHF	Approved SH

This drawing is not to be used in whole or part other than for the intended purpose and project as defined on this drawing. Refer to the contract for full terms and conditions. Maps produced by Jacobs UK Ltd. This map should NOT be rescaled. Copyright reserved.

This map is based on Ordnance Survey material with the permission of Ordnance Survey on behalf of the controller of Her Majesty's Stationary Office. Crown copyright. Unauthorised reproduction infringes Crown copyright and may lead to prosecution or civil proceedings. Scottish Executive Licence Number, 100020540 (2007).

FIGURE 25.6g



Continued on Sheet 8 of 8 (Figure 25.6h)

Continued on Sheet 6 of 8 (Figure 25.6f)

LEGEND

- Proposed Route (Engineering Profile 04/05/07)
- Indicative Study Area (500m from centre of Proposed Route)
- Watercourses
- Direction of Flow
- Waterbody
- Woodland

Breeding Bird Survey : Quadrats*

- High Habitat Value
- Medium Habitat Value
- Low Habitat Value

Breeding Bird Survey : Sites of Ornithological Value

- High Habitat Value
- Medium Habitat Value
- Low Habitat Value

Wintering Bird Survey : Quadrats

- High Habitat Value
- Medium Habitat Value
- Low Habitat Value

Wintering Bird Survey : Waterbodies of Ornithological Value

- High Habitat Value

*Seasonal Breeding Bird Surveys are ongoing & due for completion in June 2007

Rev	Date	Purpose of Revision	Drwn	Chkd	Appd

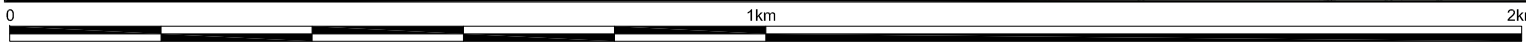
JE JACOBS
 95 Bothwell Street, Glasgow, G2 7HX, UK
 Tel: 0141 204 2511 Fax: 0141 226 3109
 www.jacobstabtie.com

Client: Aberdeen Western Peripheral Route

Project: Aberdeen Western Peripheral Route Environmental Statement, Part C - Southern Leg

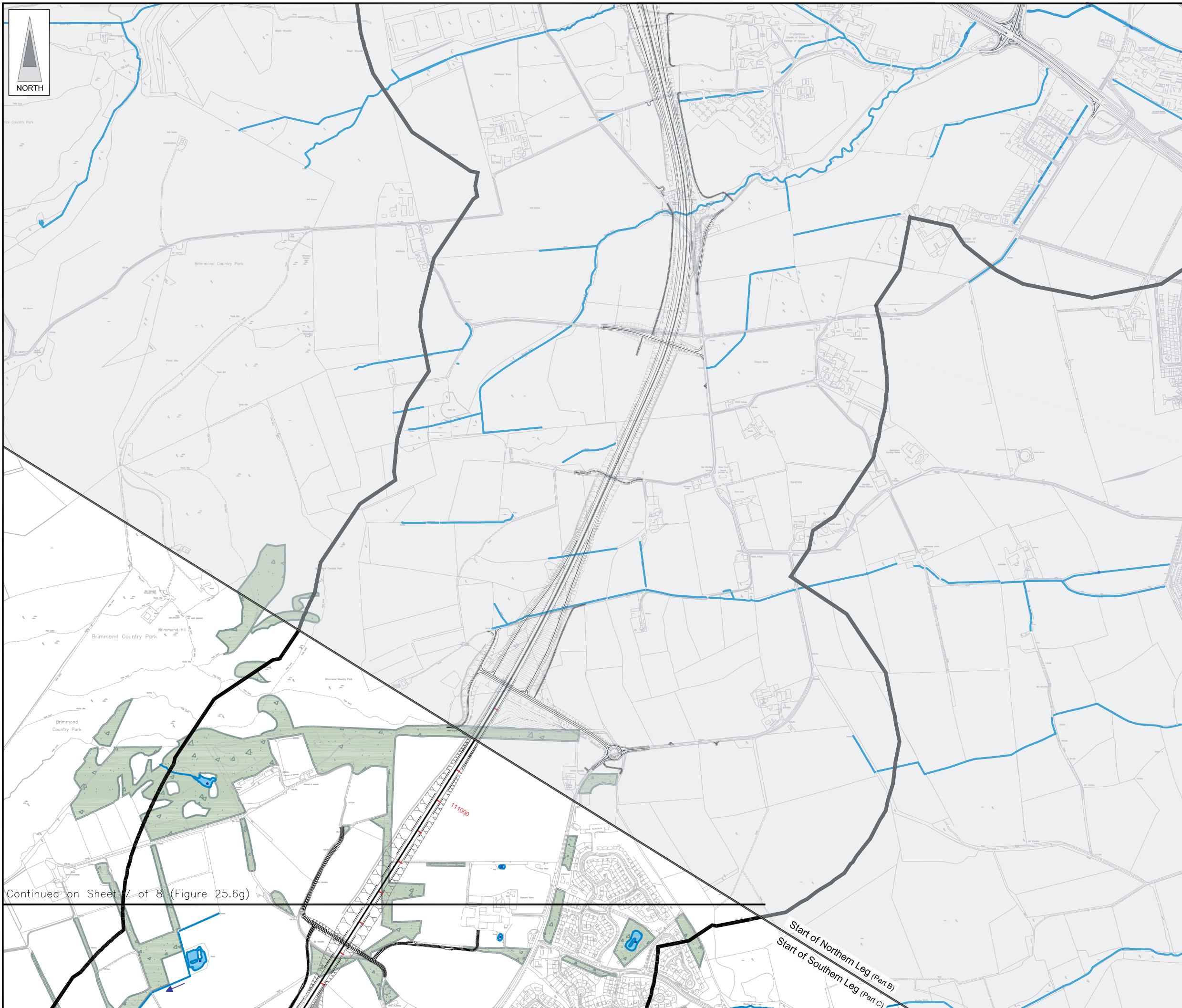
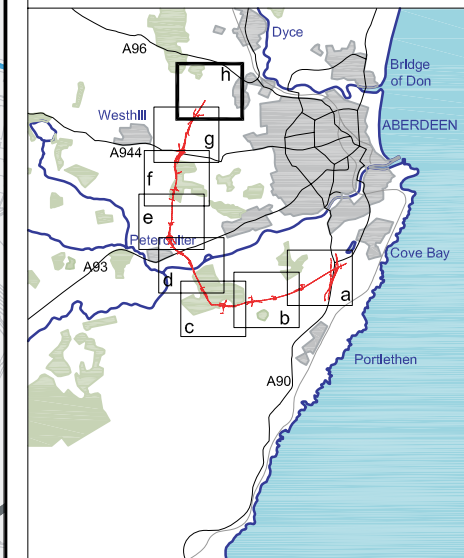
Title: Breeding & Wintering Bird Surveys Sheet 7 of 8

Drawing Status: FINAL	Revisions
JB No. 0010332	Date: July 2007
Figure No. FIGURE 25.6g	Drawn: SHF
Scale: 1:10,000	Checked: GR
	Approved: SH



This map is based on Ordnance Survey material with the permission of Ordnance Survey on behalf of the controller of Her Majesty's Stationary Office. Unauthorised reproduction infringes Crown copyright and may lead to prosecution or civil proceedings. Scottish Executive Licence Number, 100020540 (2007).

FIGURE 25.6h



- LEGEND**
- Proposed Route (Engineering Profile 04/05/07)
 - Indicative Study Area (500m from centre of Proposed Route)
 - Watercourses
 - Direction of Flow
 - Waterbody
 - Woodland
- Breeding Bird Survey : Quadrats***
- High Habitat Value
 - Medium Habitat Value
 - Low Habitat Value
- Breeding Bird Survey : Sites of Ornithological Value**
- High Habitat Value
 - Medium Habitat Value
 - Low Habitat Value
- Wintering Bird Survey : Quadrats**
- High Habitat Value
 - Medium Habitat Value
 - Low Habitat Value
- Wintering Bird Survey : Waterbodies of Ornithological Value**
- High Habitat Value

Rev	Date	Purpose of Revision	Drwn	Chkd	Appd

JE JACOBS
 95 Bothwell Street, Glasgow, G2 7HX, UK
 Tel: 0141 204 2511 Fax: 0141 226 3109
 www.jacobstabtie.com

Client: **Aberdeen Western Peripheral Route**

Project: **Aberdeen Western Peripheral Route Environmental Statement, Part C - Southern Leg**

Title: **Breeding & Wintering Bird Surveys Sheet 8 of 8**

Drawing Status	FINAL	Revisions	
JB No.	0010332	Date	July 2007
Figure No.	FIGURE 25.6h	Drawn	SHF
Scale	1:10,000	Checked	GR
		Approved	SH