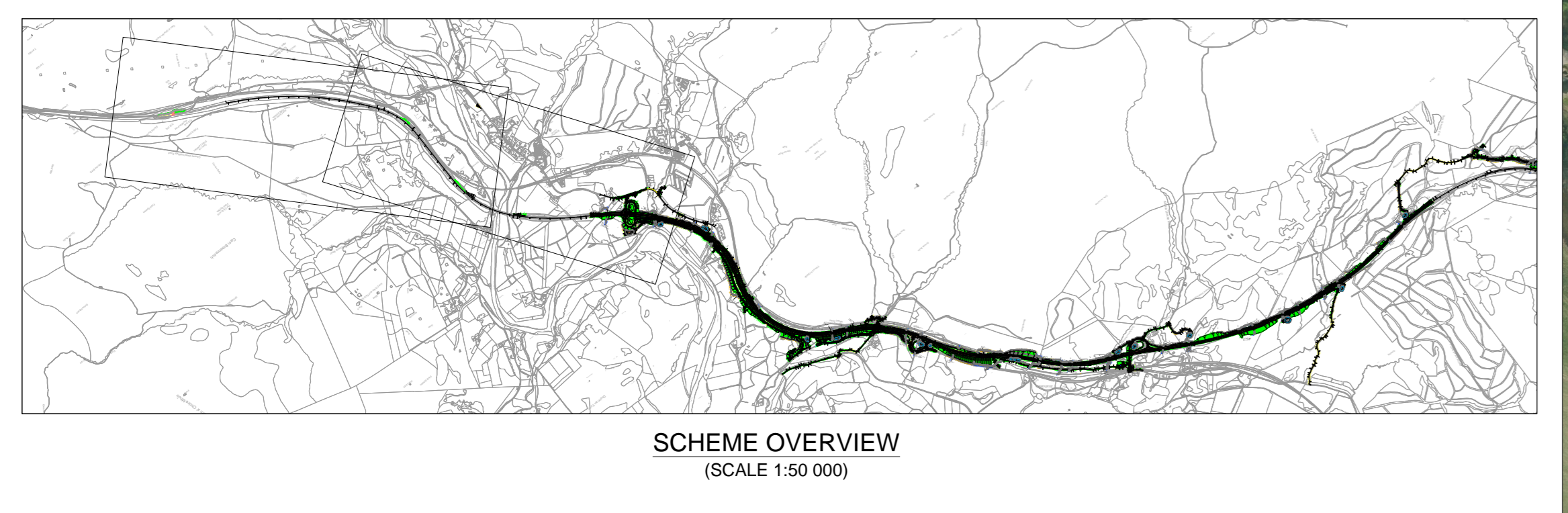
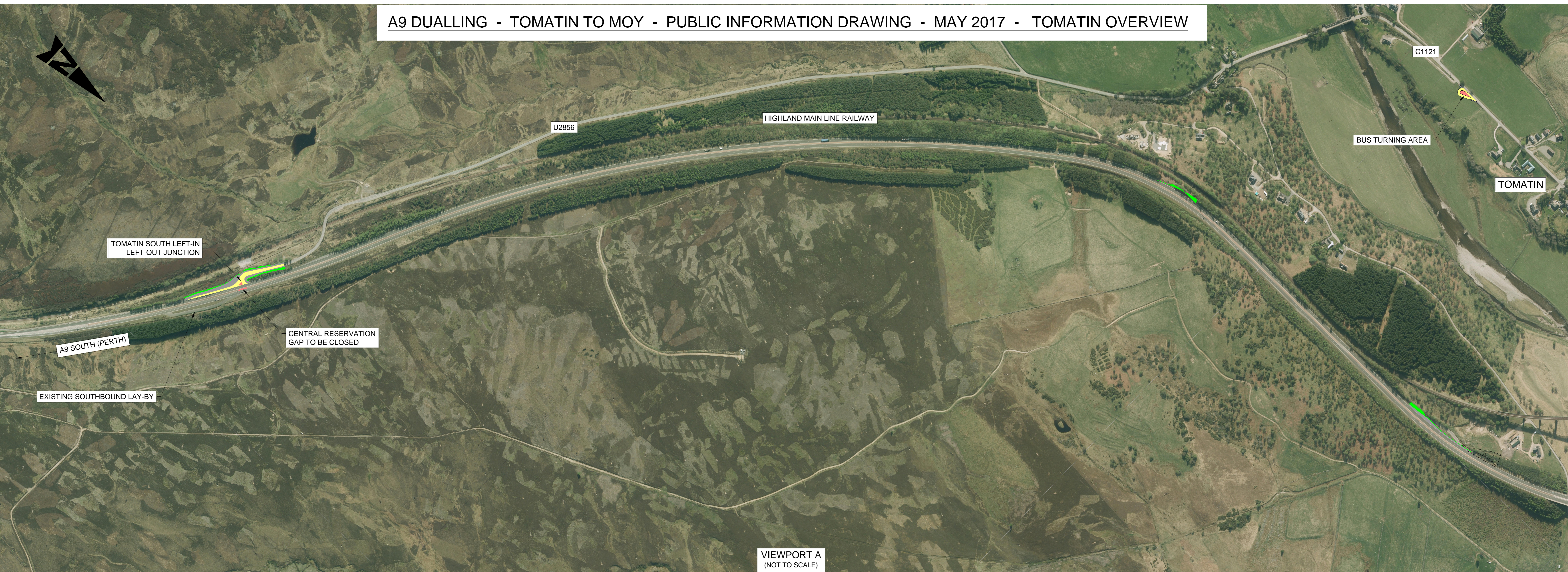


A9 DUALLING - TOMATIN TO MOY - PUBLIC INFORMATION DRAWING - MAY 2017 - TOMATIN OVERVIEW

100  
0  
10  
Miles  
DO NOT SCALE



**LEGEND**

ALIGNMENT	DESCRIPTION
[Green]	EARTHWORKS
[Grey]	VERGE
[Yellow]	CARRIAGEWAY
[Red]	CENTRAL RESERVE
[Blue]	REALIGNED WATERCOURSE
[Orange]	DRAINAGE DITCH
[Brown]	DRAINAGE BASIN
[Dark Blue]	STREAM REALIGNMENT

Rev	Drawn / Des	Checked	Approved	Date
P01	JK	RB	GA	17/05/17

FOR INFORMATION

Client	TRANSPORT SCOTLAND
Project	A9 DUALLING PERTH TO INVERNESS Tomatin to Moy



Drawing Title: PUBLIC INFORMATION DRAWINGS MAY 2017 TOMATIN OVERVIEW

AS SHOWN	Design / Drawn	Checked	Approved	Authorised
AO	JK	RB	GA	DM

Project: A9P12 - AMJ - HML - A\_ZZZZ\_ZZ - SK - RD - 0013

Revision: P01

Printed: May 17, 2017 - 4:25pm by: JAKILLIC

Reproduced by permission of Ordnance Survey on behalf of HMSO. © Crown copyright and database right 2015. All rights reserved. Ordnance Survey Licence number 100046668.