



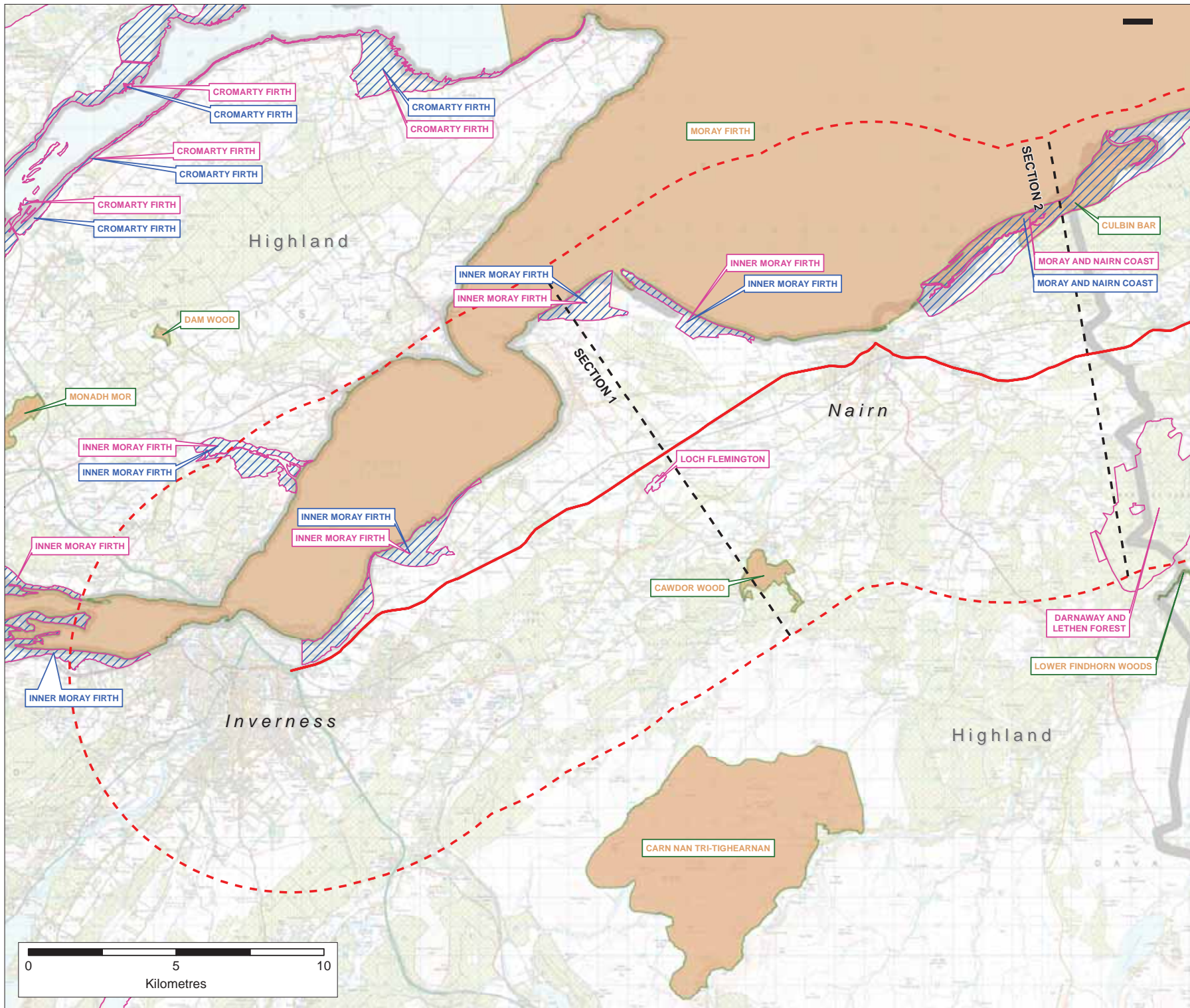
**TRANSPORT
SCOTLAND**
CÒMHDHAIL ALBA

A96 Dualling Programme

Strategic Environmental Assessment
Tier 1 Environmental Report

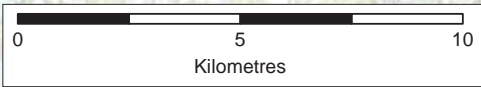
Appendix C - GIS Constraints Mapping
Baseline Study Area Sections 1 and 2

September 2014



Key

- A96 Route (Existing)
- SEA Baseline Study Section Break
- 15km Wide Baseline Study Area Boundary
- Special Protection Area
- Special Areas of Conservation
- Ramsar



Rev	Rev date	Purpose of revision	Drawn	Checked	Approved

City Park,
395 Alexandra Parade,
Glasgow, G3 7LU
+44 (0)141 552 2000

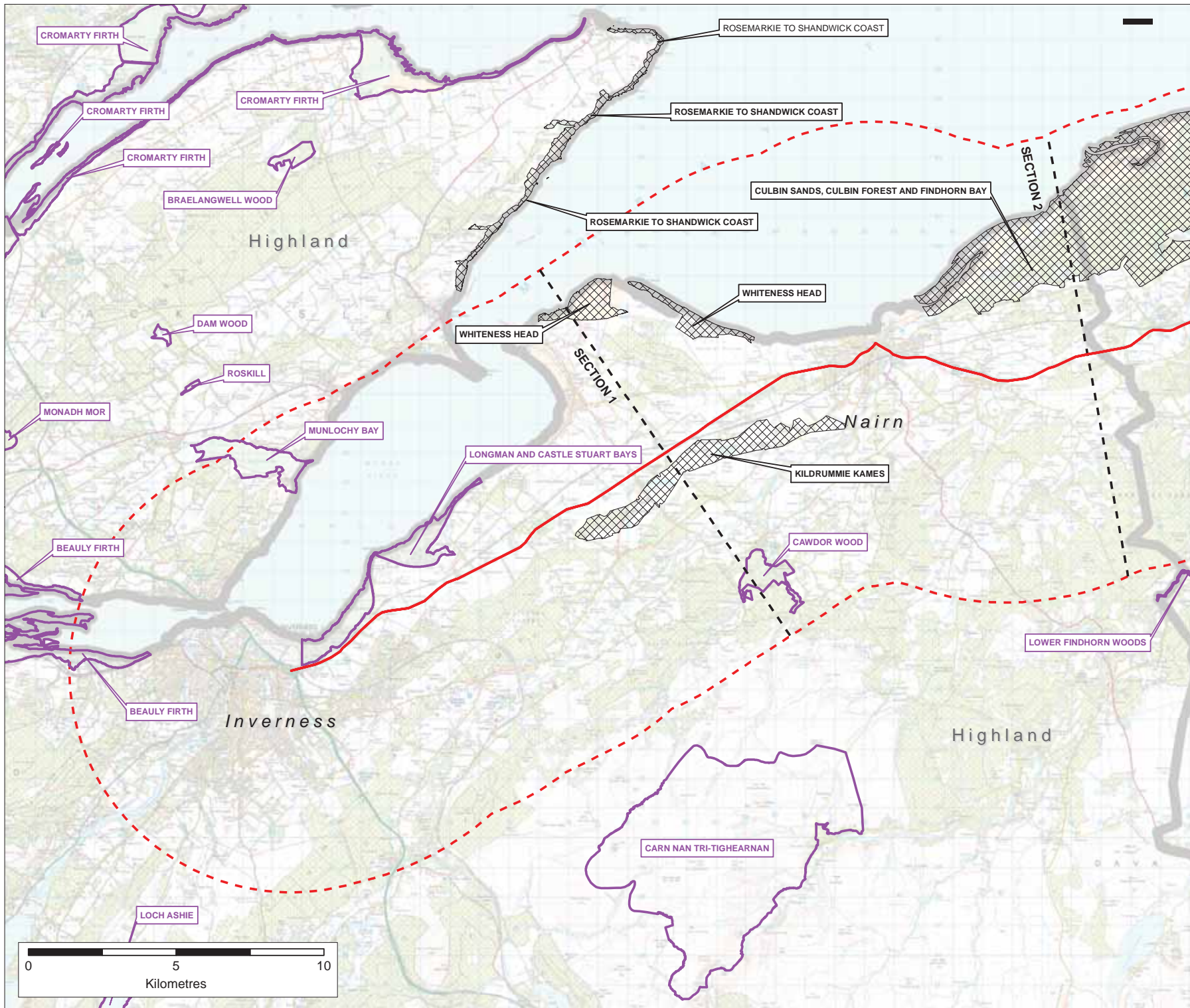
Project
A96 Strategic Environmental Assessment

Drawing:
Baseline Constraints Mapping
Biodiversity, Flora & Fauna - Natura and Ramsar Sites

Drawn by: Jason Greenwell	Date: 25/08/2014
Checked by: Tim Hughes	Date: 25/08/2014
Approved by: John Fox	Date: 25/08/2014

Drawing No: TSEA96IER10011A **Rev** 1

Drawing scale: 1:25,000



Key

- A96 Route (Existing)
- SEA Baseline Study Section Break
- SSSI_Biological
- SSSI_Mixed
- 15km Wide Baseline Study Area Boundary

Rev	Rev date	Purpose of revision	Drawn	Checked	Approved



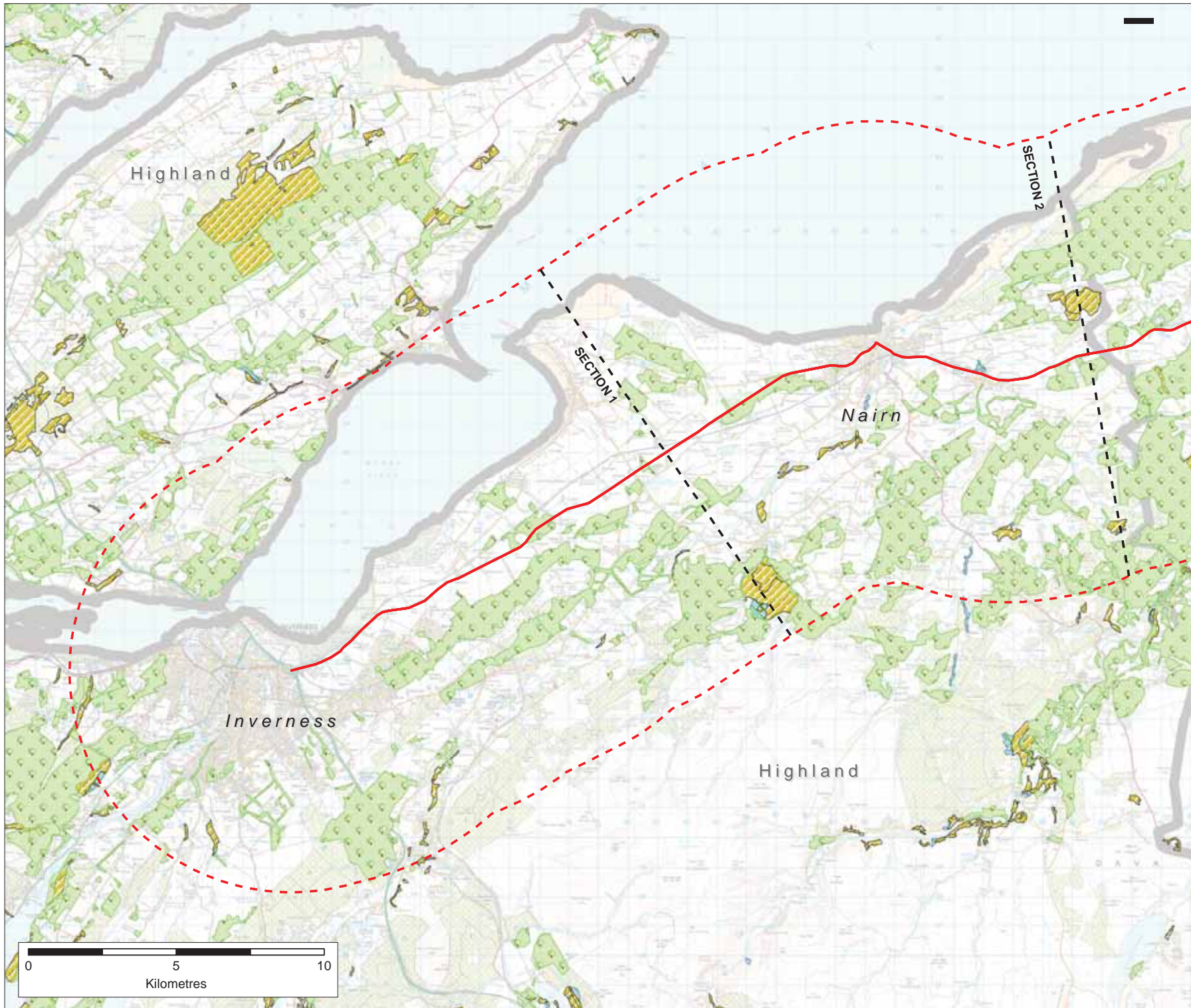
City Park,
395 Alexandra Parade,
Glasgow, G3 7JL
+44 (0)141 552 2000

Project
A96 Strategic Environmental Assessment

Drawing:
Baseline Constraints Mapping
Biodiversity, Flora & Fauna - Biological & Mixed SSSI Sites

Drawn by:	Simon Greenwell	Date:	25/08/2014
Checked by:	Joe Hughes	Date:	25/08/2014
Approved by:	John Fox	Date:	25/08/2014

Drawing No:	TSEA961ER10021A	Rev	1
Drawing scale:	1:25,000		



Key

- A96 Route (Existing)
- SEA Baseline Study Section Break
- 15km Wide Baseline Study Area Boundary
- Ancient Woodland - Plantation
- Ancient Woodland - Semi Natural
- Ancient Woodland - Royal



Rev	Rev date	Purpose of revision	Drawn	Checked	Approved

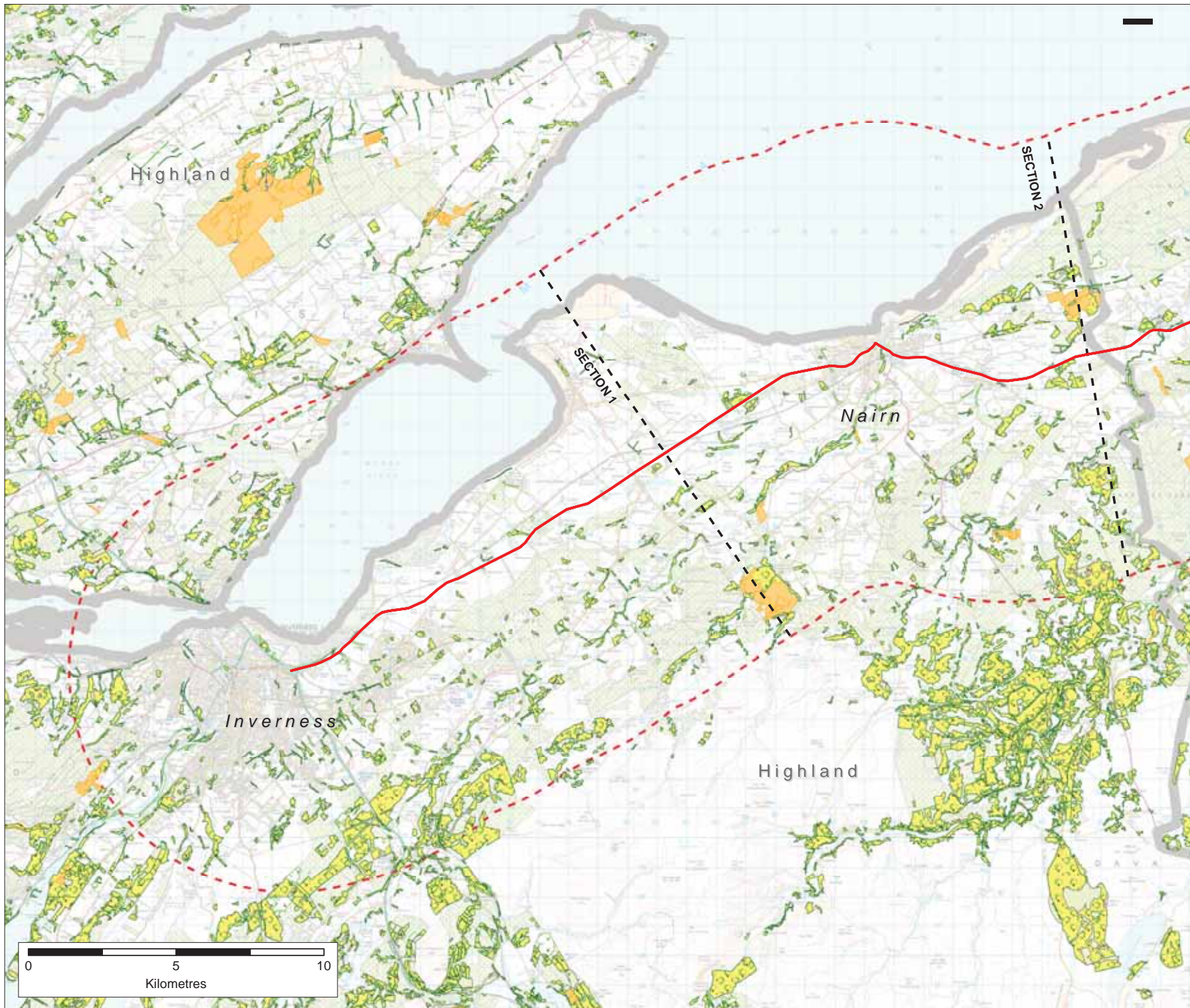
City Park,
 359 Alexandra Parade,
 Glasgow, G3 7LU
 +44 (0)141 552 2000

Project
A96 Strategic Environmental Assessment

Drawing:
Baseline Constraints Mapping
Biodiversity, Flora & Fauna - Ancient Woodland Inventory

Drawn by:	Simon Greenwood	Date:	25/08/2014
Checked by:	Joe Hughes	Date:	25/08/2014
Approved by:	John Fox	Date:	25/08/2014

Drawing No:	Rev
TSEA96IER10031A	1
Drawing scale:	1:25,000

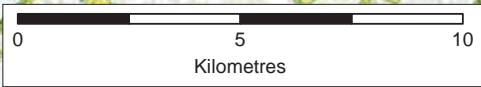


Key

- A96 Route (Existing)
- SEA Baseline Study Section Break
- 15km Wide Baseline Study Area Boundary

Native Woodland Survey Type

- Native Woodland
- Nearly-Native Woodland
- Open Land Habitat
- PAWS (Plantation on Ancient Woodland Site)



Rev	Rev date	Purpose of revision	Drawn	Checked	Approved



City Park,
359 Alexandra Parade,
Glasgow, G3 7LU
+44 (0)141 552 2000

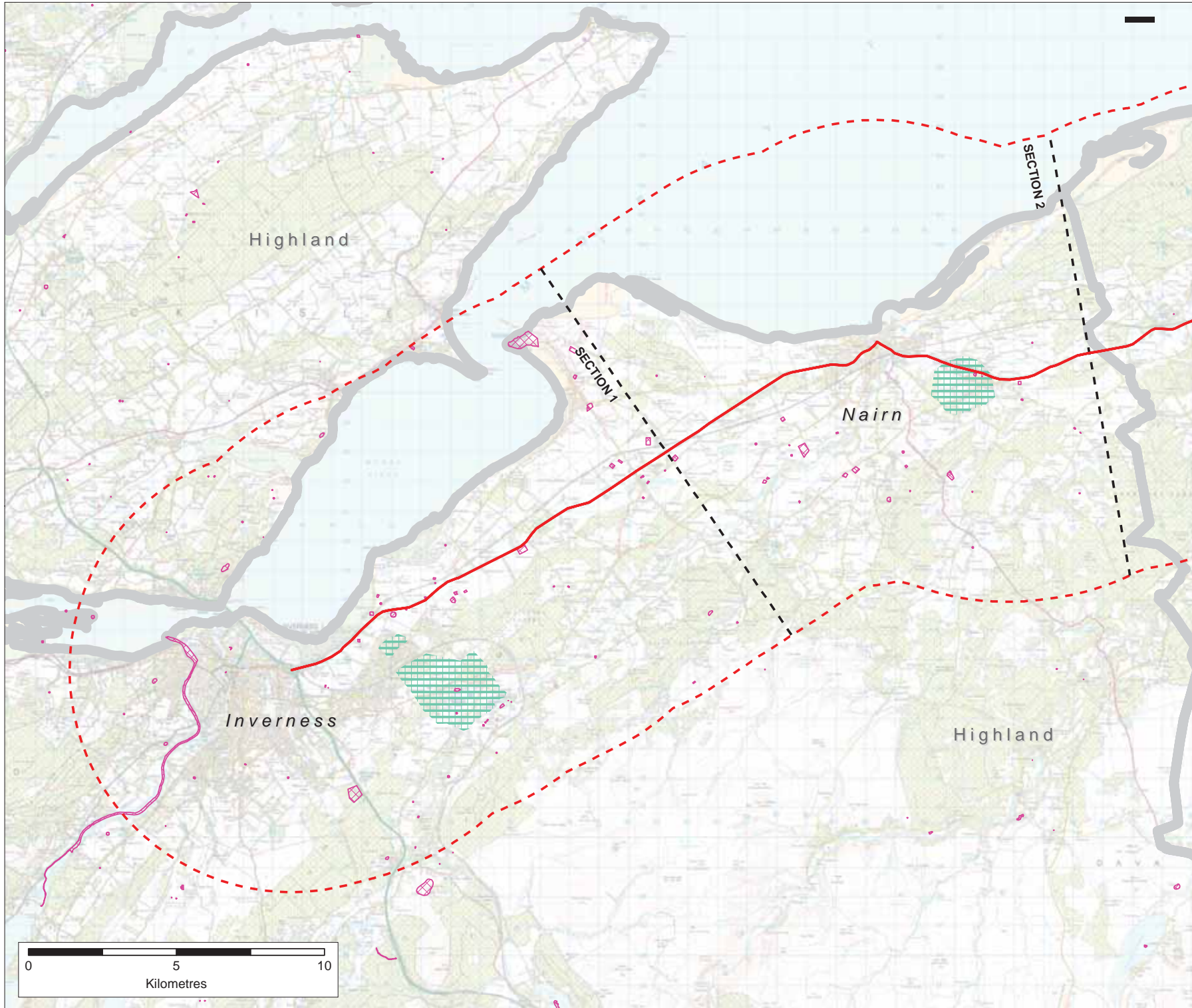


Project
A96 Strategic Environmental Assessment






Drawing:
Baseline Constraints Mapping
Biodiversity, Flora & Fauna - Native Woodland Survey of
Scotland




Drawn by:	Geoff Greenwell	Date:	25/08/2014
Checked by:	Jon Ingram	Date:	25/08/2014
Approved by:	John Fox	Date:	25/08/2014

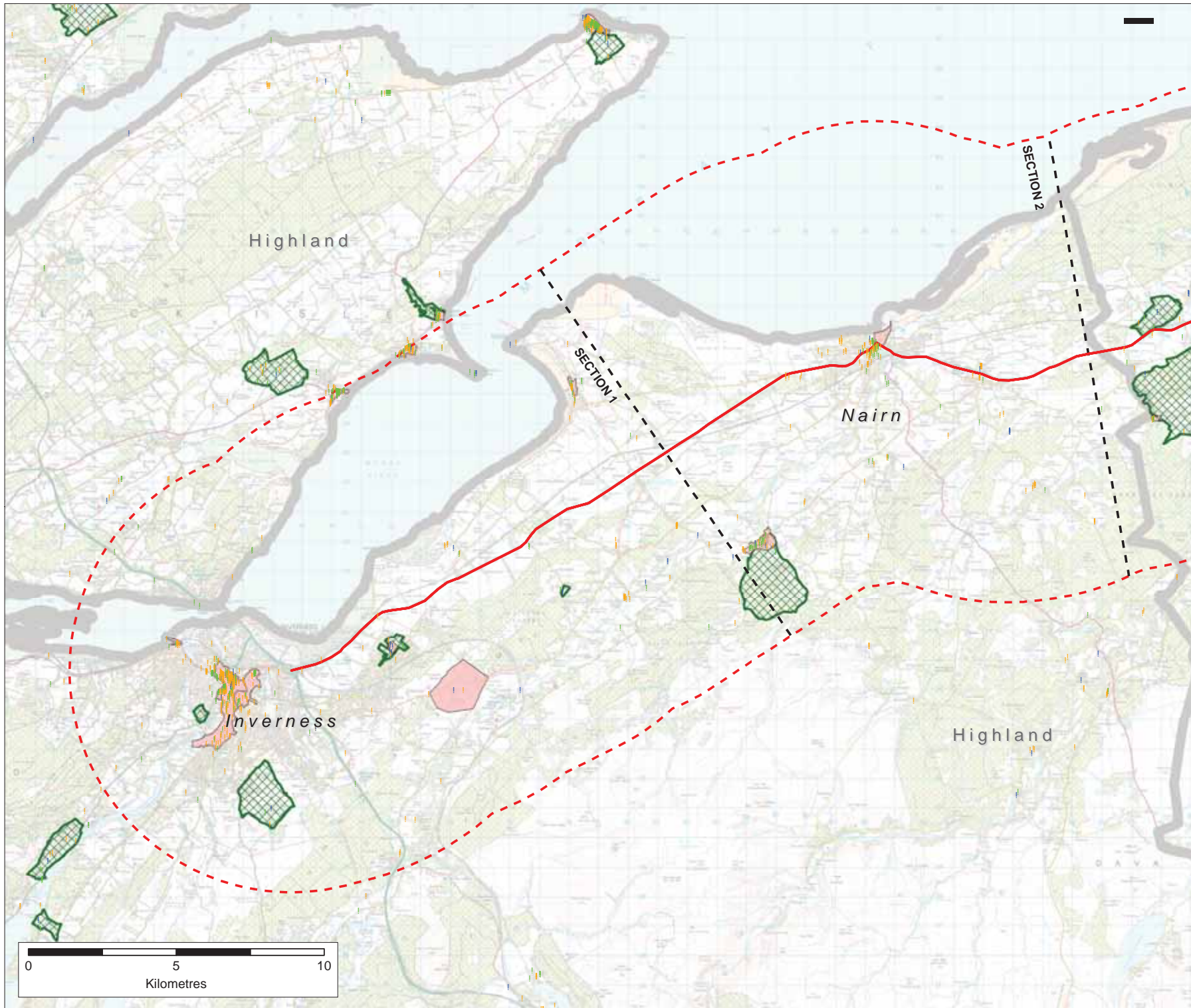
Drawing No:	TSEA96/ER1004/A	Rev	1
Drawing scale:	1:25,000		



Key

-  A96 Route (Existing)
-  SEA Baseline Study Section Break
-  15km Wide Baseline Study Area Boundary
-  Battlefields
-  Scheduled Monuments

Rev	Rev date	Purpose of revision	Drawn	Checked	Approved
					
City Park, 359 Alexandra Parade, Glasgow, G3 7LU +44 (0)141 552 2000					
Project A96 Strategic Environmental Assessment					
Drawing: Baseline Constraints Mapping Historic Environment - Battlefields & Scheduled Monument Sites					
Drawn by: <i>Geoff Greenwell</i>		Date: 25/08/2014			
Checked by: <i>Joe Hughes</i>		Date: 25/08/2014			
Approved by: <i>John Fox</i>		Date: 25/08/2014			
Drawing No: TSEA96IER10051A					Rev 1
Drawing scale: 1:25,000					



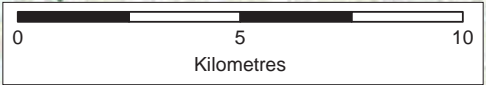
Key

- A96 Route (Existing)
- SEA Baseline Study Section Break
- 15km Wide Baseline Study Area Boundary

Listed Buildings

- Category A
- Category B
- Category C

- Conservation Areas
- Gardens & Designed Landscapes



Rev	Rev date	Purpose of revision	Drawn	Checked	Approved

**A96
DUALLING**

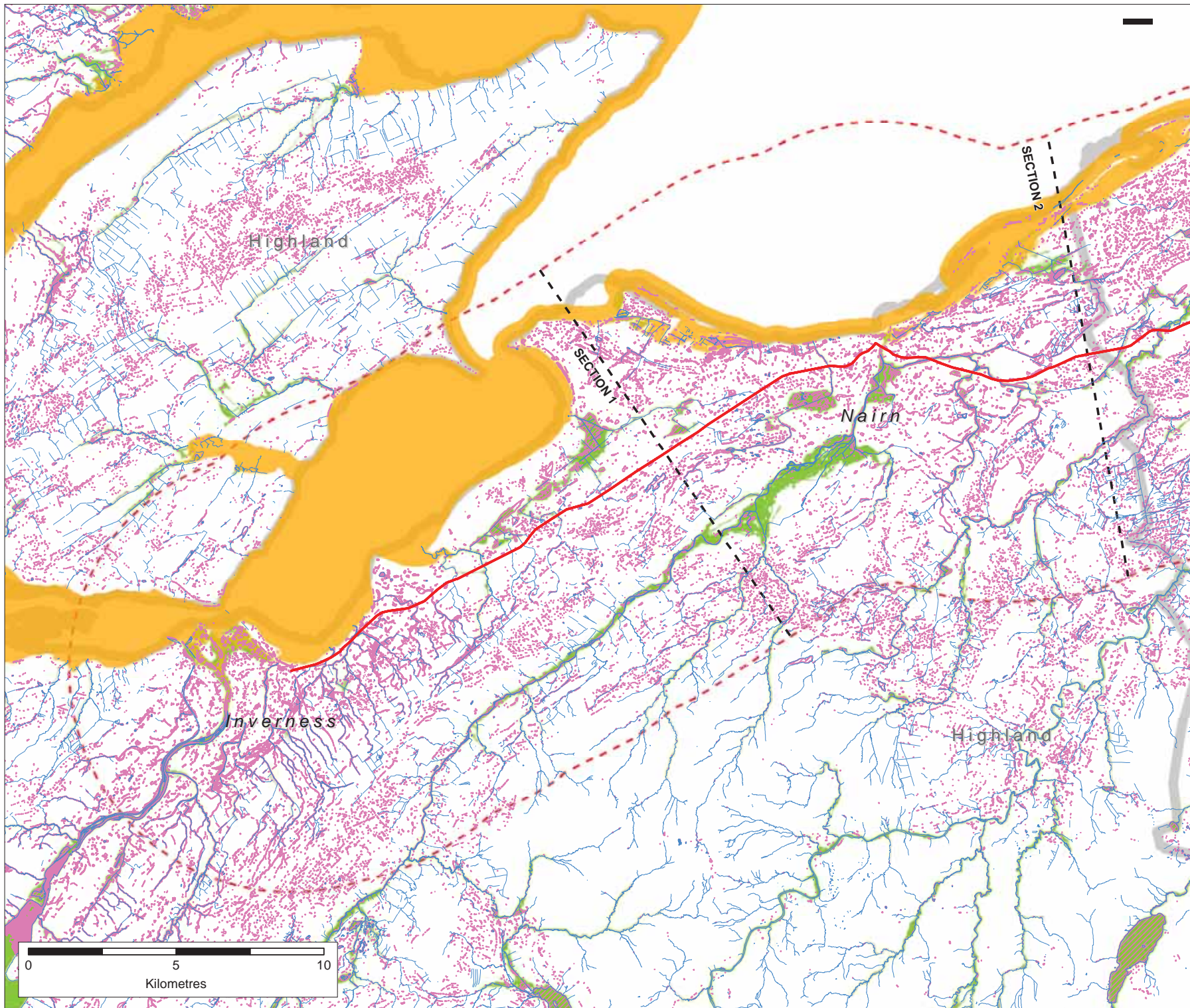
City Park,
395 Alexandra Parade,
Glasgow, G3 7LU
+44 (0)141 552 2000

Project
A96 Dualling - Strategic Environmental Assessment

Drawing:
Baseline Constraints Mapping
Historic Environment - Gardens & Designed Landscapes,
Listed Buildings (CAT A/B/C) & Conservation Areas

Drawn by: <small>John Greenwell</small>	Date: <small>25/08/2014</small>
Checked by: <small>John Fox</small>	Date: <small>25/08/2014</small>
Approved by: <small>John Fox</small>	Date: <small>25/08/2014</small>

Drawing No: TSEA96IER10061A	Rev 1
---------------------------------------	-----------------



Key

- A96 Route (Existing)
- SEA Baseline Study Section Break
- 15km Wide Baseline Study Area Boundary
- Watercourses
- Flood Zone - Surface Water (1 in 200 year)
- Flood Zone - Fluvial (1 in 200 year)
- Flood Zone - Coastal (1 in 200 year)

Rev	Rev date	Purpose of revision	Drawn	Checked	Approved



City Park,
395 Alexandra Parade,
Glasgow, G3 7LU
+44 (0)141 552 2000

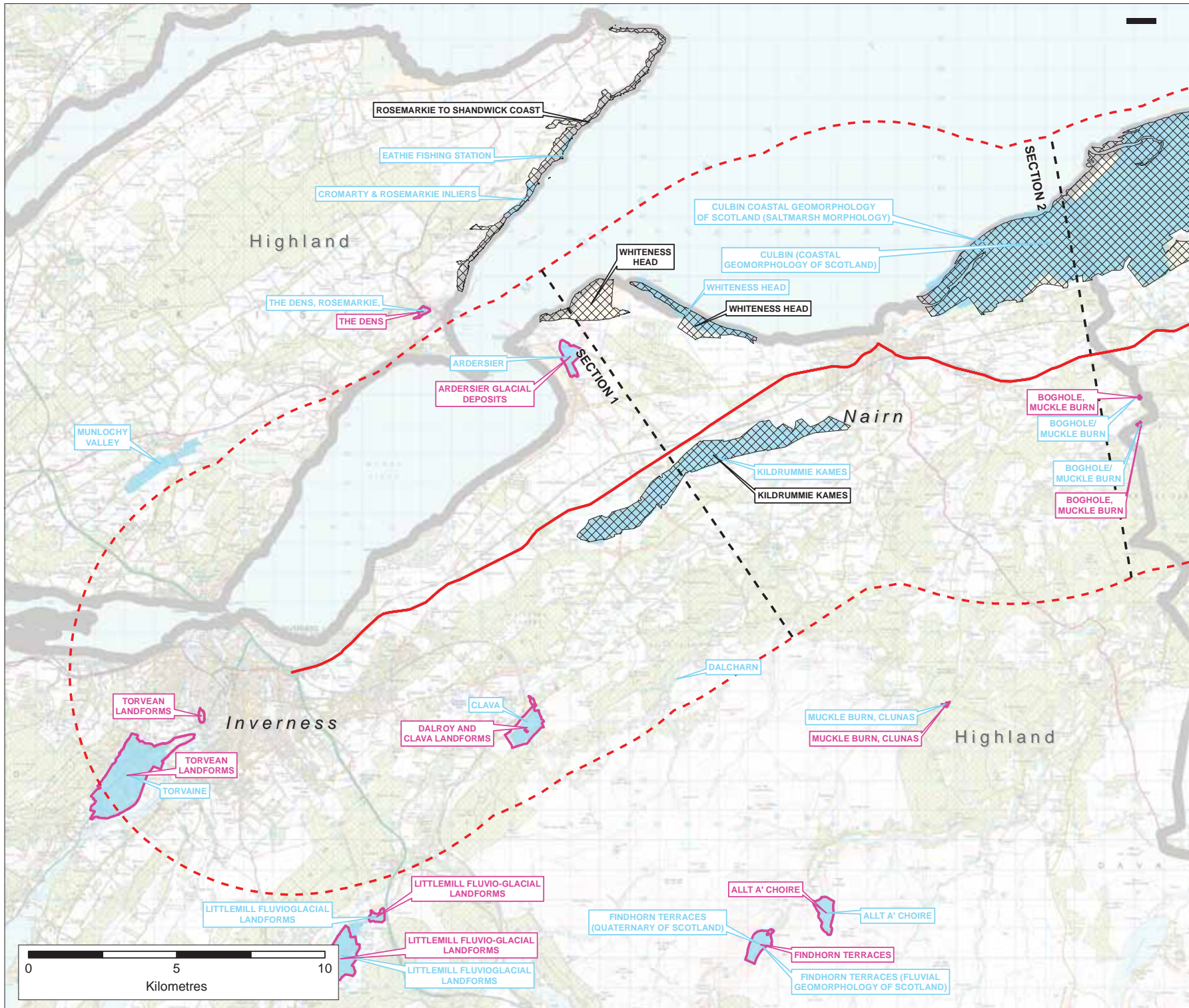
Project
A96 Dualling - Strategic Environmental Assessment

Drawing:
Baseline Constraints Mapping
Water & Soils - Watercourses and Flood Zones (1 in 200 year)

Designer:	John Gibberd	Date:	25/08/2014
Checked by:	Tom Hughes	Date:	25/08/2014
Approved by:	John Fox	Date:	25/08/2014

Drawing No:
TSEA96ER1007A

Drawing scale:	1:25,000
----------------	----------



- Key**
- A96 Route (Existing)
 - SEA Baseline Study Section Break
 - 15km Wide Baseline Study Area Boundary
 - Geological SSSI
 - Mixed SSSI
 - Geological Conservation Review



Rev	Rev date	Purpose of revision	Drawn	Checked	Approved

City Park,
350 Alexandra Parade,
Glasgow, G3 7LU
+44 (0)141 552 2000

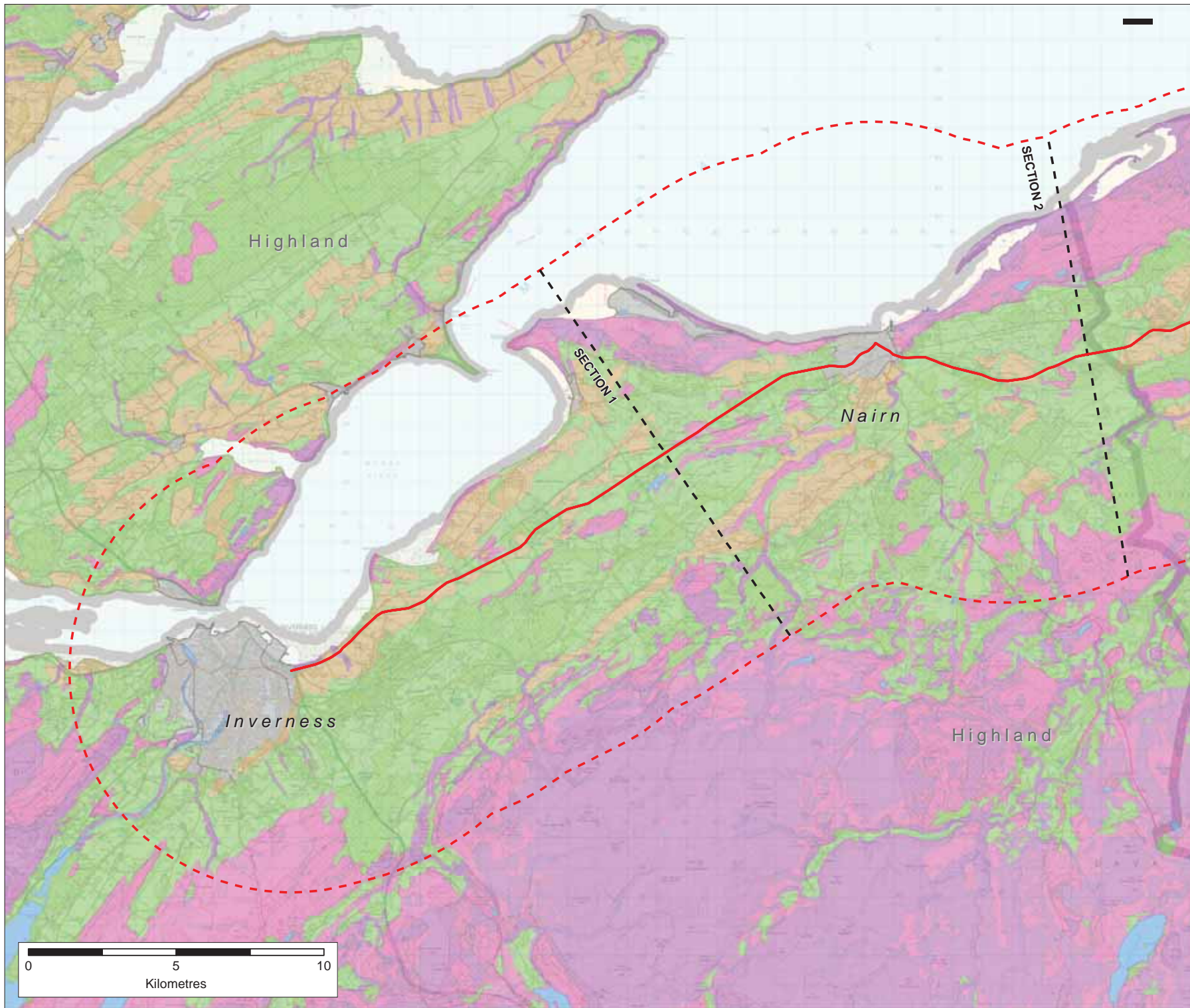
Project
A96 Strategic Environmental Assessment

Drawing:
Baseline Constraints Mapping
Water & Soils - Geological & Mixed SSSI and Geological
Conservation Review

Drawn by:	John Greenwell	Date:	25/08/2014
Checked by:	John Greenwell	Date:	25/08/2014
Approved by:	John Fox	Date:	25/08/2014

Drawing No: TSEA96/ER1008IA **Rev** 1

Drawing scale: 1:25,000



Key

- A96 Route (Existing)
- - - SEA Baseline Study Section Break
- - - - 15km Wide Baseline Study Area Boundary

Land Capability for Agriculture (Grade)

- Arable Agriculture (Grade 1-3.1)
- Mixed Agriculture (Grade 3.2-4.2)
- Improved Grassland (Grade 5.1-5.3)
- Rough Grazing (Grade 6.1-7)
- Water
- Urban

Rev	Rev date	Purpose of revision	Drawn	Checked	Approved




City Park,
359 Alexandra Parade,
Glasgow, G3 7LU
+44 (0)141 552 2000

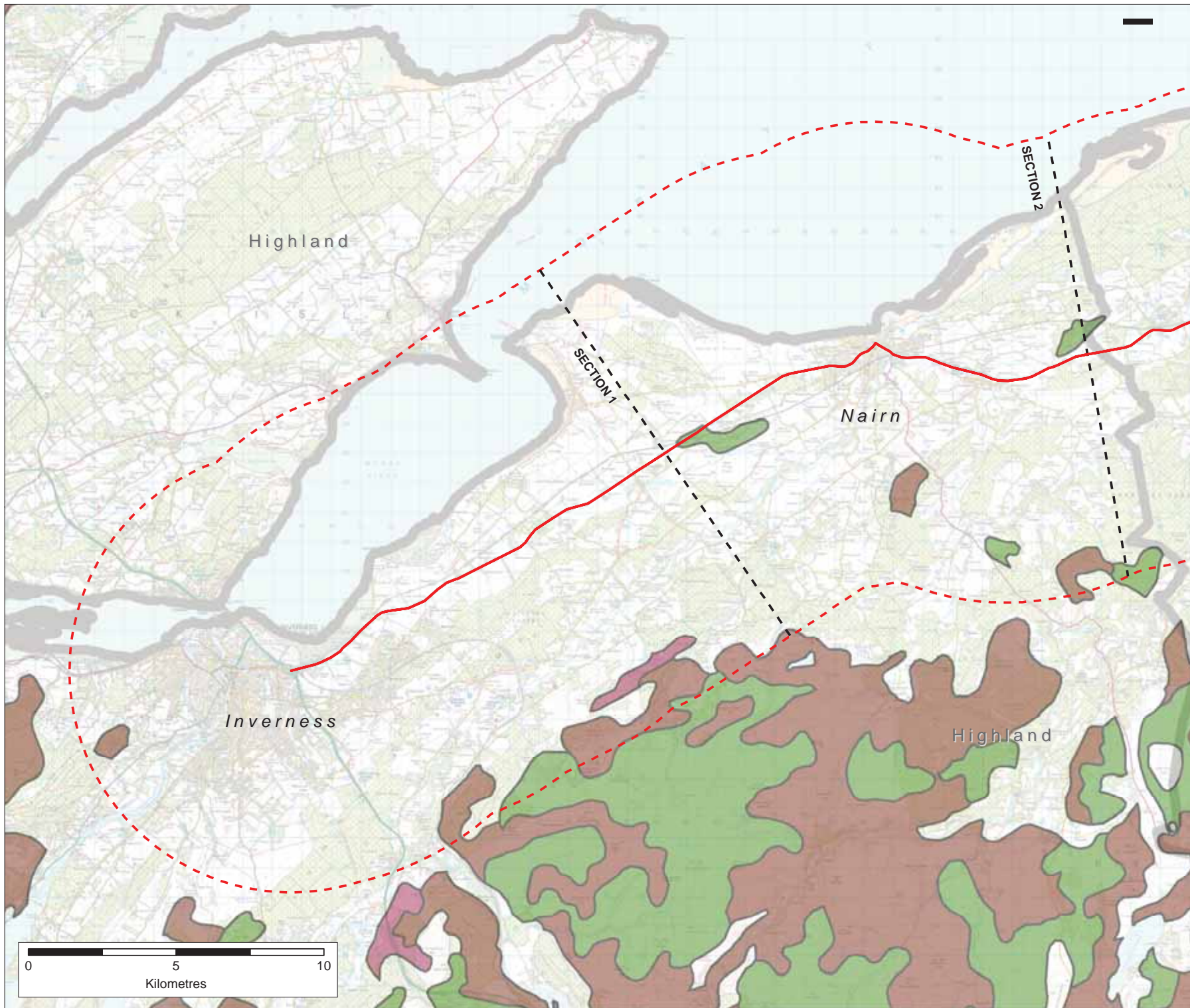


Project
A96 Dualling - Strategic Environmental Assessment

Drawing:
Baseline Constraints Mapping
Water & Soils - Land Capability for Agriculture



Drawn by:	John Gibberd	Date:	25/08/2014
Checked by:	Tom Hughes	Date:	25/08/2014
Approved by:	John Fox	Date:	25/08/2014

Drawing No:	TSEA96IER10091A	Rev	1
Drawing scale:	1:25,000		



- Key**
- A96 Route (Existing)
 - - - SEA Baseline Study Section Break
 - - - 15km Wide Baseline Study Area Boundary
- Soil Type**
- Peat
 - Peaty gleys
 - Peaty podzols

Rev	Rev date	Purpose of revision	Drawn	Checked	Approved

City Park,
359 Alexandra Parade,
Glasgow, G3 7LU
+44 (0)141 552 2000

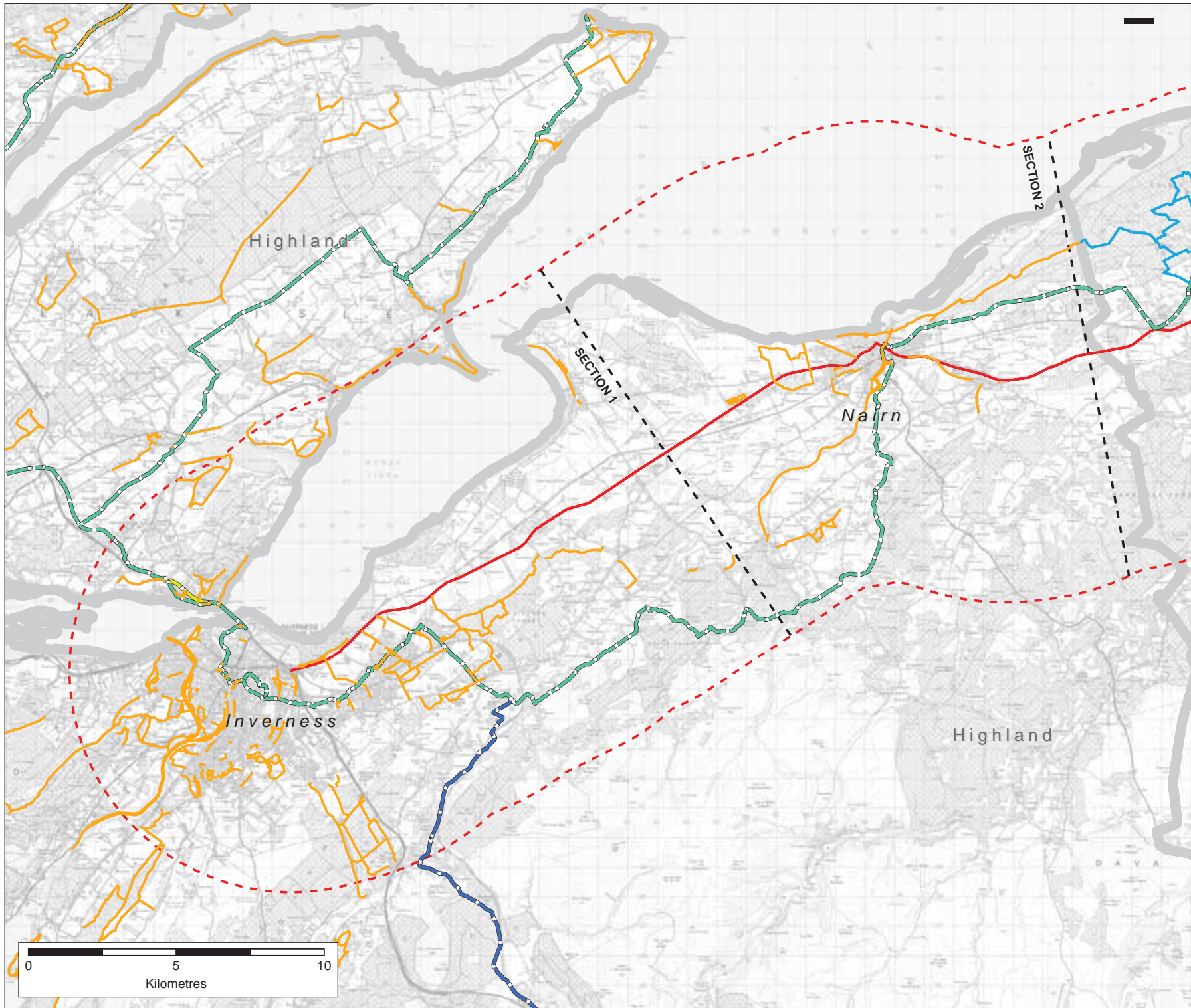
Project
A96 Dualling - Strategic Environmental Assessment

Drawing:
Baseline Constraints Mapping
Water & Soils - Peat & Peaty Soils

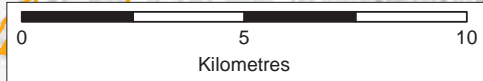
Drawn by:	John Glenworth	Date:	25/08/2014
Checked by:	Tim Hughes	Date:	25/08/2014
Approved by:	John Fox	Date:	25/08/2014

Drawing No:	TSEA96ER10101A	Rev	1
Drawing scale:	1:25,000		



Reproduced by permission of Ordnance Survey on behalf of HMSO. © Crown copyright and database right. All rights reserved.
Transport Scotland Licence number 100046668, 2014




- Key**
- A96 Route (Existing)
 - - - SEA Baseline Study Section Break
 - - - 15km Wide Baseline Study Area Boundary
 - Highland Council - Core Paths
 - Moray Council - Core Paths
 - Sustrans National Cycle Route - 1
 - Sustrans National Cycle Route - 7
 - Sustrans National Cycle Network Link



Rev	Rev date	Purpose of revision	Drawn	Checked	Approved

City Park,
 350 Alexandra Parade,
 Glasgow, G3 7LU
 +44 (0)141 552 2000



Project
 A96 Dualling - Strategic Environmental Assessment

Drawing:
 Baseline Constraints Mapping
 Population and Human Health - Non Motorised Users (NMU)
 Core Paths and Cycle Routes

Drawn by:	John Greenaway	Date:	25/08/2014
Checked by:	Joe Hughes	Date:	25/08/2014
Approved by:	John Fox	Date:	25/08/2014

Drawing No:
 TSEA96IER10111A

Rev	1
-----	---

Drawing scale: 1:25,000



© Crown copyright 2014

You may re-use this information (excluding logos) free of charge in any format or medium, under the terms of the Open Government Licence. To view this licence, visit <http://www.nationalarchives.gov.uk/doc/open-government-licence/> or e-mail: psi@nationalarchives.gsi.gov.uk.

Where we have identified any third party copyright information you will need to obtain permission from the copyright holders concerned.