



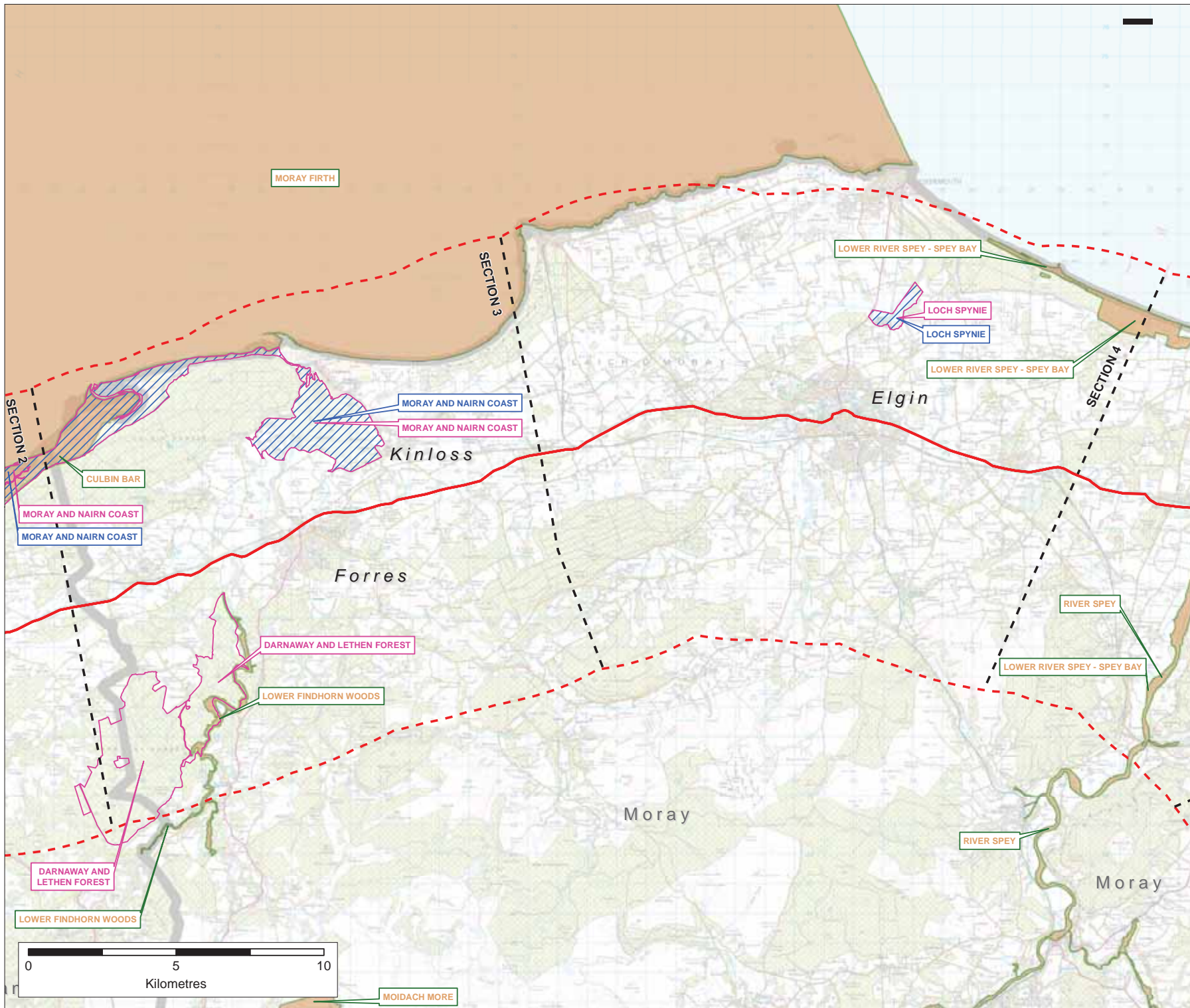
**TRANSPORT
SCOTLAND**
CÒMHDHAIL ALBA

A96 Dualling Programme

Strategic Environmental Assessment
Tier 1 Environmental Report



Appendix C - GIS Constraints Mapping
Baseline Study Area Sections 3 and 4

September 2014



- Key**
- A96 Route (Existing)
 - SEA Baseline Study Section Break
 - 15km Wide Baseline Study Area Boundary
 - Special Protection Area
 - Special Areas of Conservation
 - Ramsar

Rev	Rev date	Purpose of revision	Drawn	Checked	Approved

City Park,
355 Alexandra Parade,
Glasgow, G3 7LU
+44 (0)141 552 2000

Project
A96 Strategic Environmental Assessment

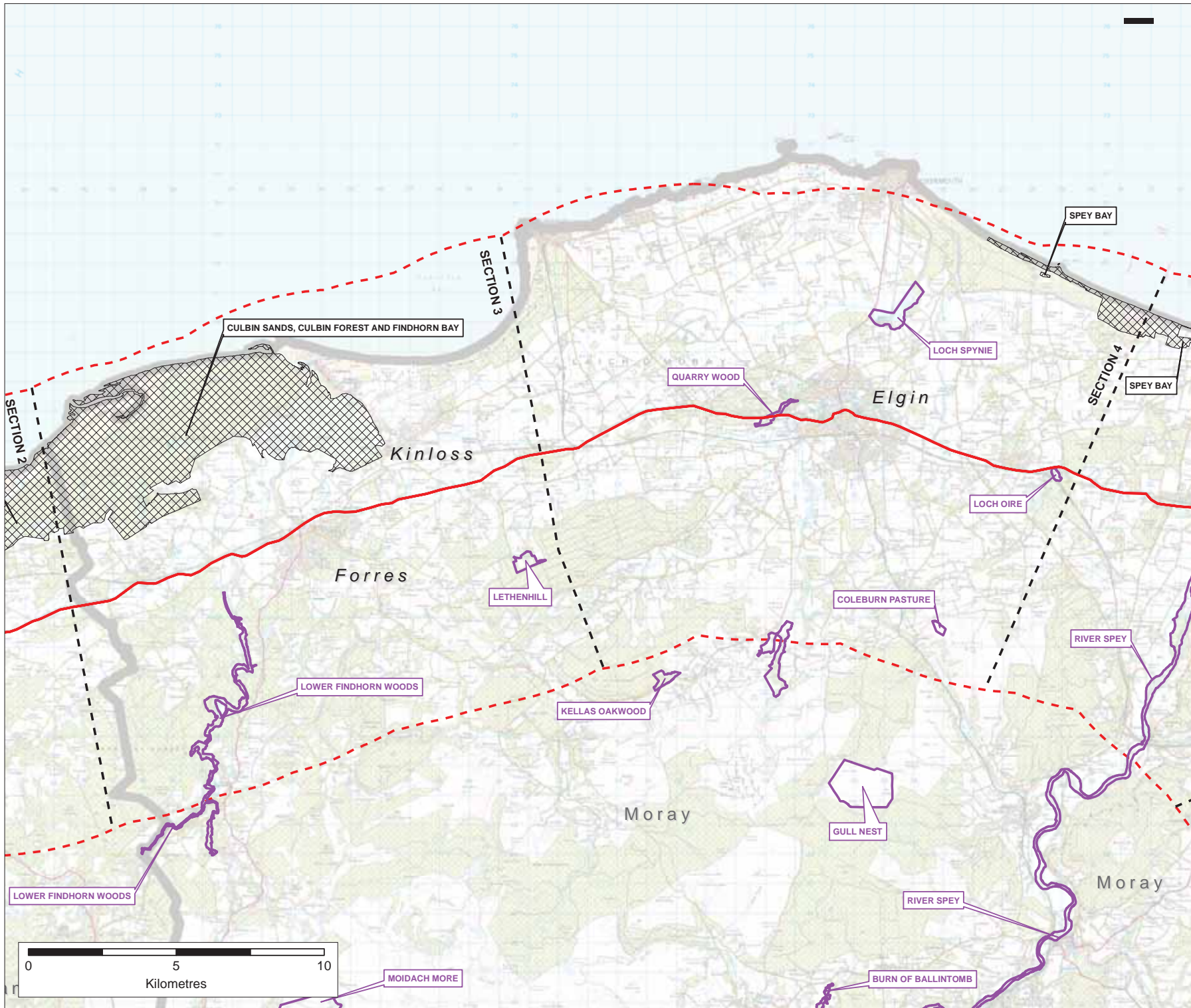
Drawing:
Baseline Constraints Mapping
Biodiversity, Flora & Fauna - Natura and Ramsar Sites

Drawn by: John Gibberd	Date: 25/08/2014
Checked by: Tom Hughes	Date: 25/08/2014
Approved by: John Fox	Date: 25/08/2014

Drawing No: **TSEA96/ER/1001B** Rev: **1**

Drawing scale: 1:25,000





- Key**
- A96 Route (Existing)
 - SEA Baseline Study Section Break
 - SSSI_Biological
 - SSSI_Mixed
 - 15km Wide Baseline Study Area Boundary

Rev	Rev date	Purpose of revision	Drawn	Checked	Approved

City Park,
 359 Alexandra Parade,
 Glasgow, G3 7LU
 +44 (0)141 552 2000

Project
 A96 Strategic Environmental Assessment

Drawing:
 Baseline Constraints Mapping
 Biodiversity, Flora & Fauna - Biological & Mixed SSSI Sites

Drawn by: Owen Greenwood	Date: 25/08/2014
Checked by: Joe Hughes	Date: 25/08/2014
Approved by: John Fox	Date: 25/08/2014

Drawing No: TSEA96/ER1002/B **Rev** 1

Drawing scale: 1:25,000



Key

- A96 Route (Existing)
- SEA Baseline Study Section Break
- 15km Wide Baseline Study Area Boundary
- Ancient Woodland - Plantation
- Ancient Woodland - Semi Natural
- Ancient Woodland - Roy

Rev	Rev date	Purpose of revision	Drawn	Checked	Approved

City Park,
359 Alexandra Parade,
Glasgow, G3 7LU
+44 (0)141 552 2000

Halcrow
A HALECROW COMPANY

Project
A96 Strategic Environmental Assessment

Drawing:
Baseline Constraints Mapping
Biodiversity, Flora & Fauna - Ancient Woodland Inventory




Client:	Scottish Government	Date:	25/08/2014
Created by:	Joe Hughes	Date:	25/08/2014
Approved by:	John Fox	Date:	25/08/2014

Drawing No: **TSEA96IER1003IB** Rev 1



Drawing scale: 1:25,000



Key

-  A96 Route (Existing)
-  SEA Baseline Study Section Break
-  15km Wide Baseline Study Area Boundary

Native Woodland Survey Type

-  Native Woodland
-  Nearly-Native Woodland
-  Open Land Habitat
-  PAWS (Plantation on Ancient Woodland Site)

Rev	Rev date	Purpose of revision	Drawn	Checked	Approved



City Park,
359 Alexandra Parade,
Glasgow, G3 7LU
+44 (0)141 552 2000

Project
A96 Strategic Environmental Assessment

Drawing:
Baseline Constraints Mapping
Biodiversity, Flora & Fauna - Native Woodland Survey of
Scotland





Client:	Scottish Government	Date:	25/08/2014
Designer:	Tom Ingram	Date:	25/08/2014
Approver:	John Fox	Date:	25/08/2014

Drawing No: **TSEA96/ER1004B** Rev: **1**

Drawing scale: 1:25,000



Key

-  A96 Route (Existing)
-  SEA Baseline Study Section Break
-  15km Wide Baseline Study Area Boundary
-  Scheduled Monuments

Rev	Rev date	Purpose of revision	Drawn	Checked	Approved



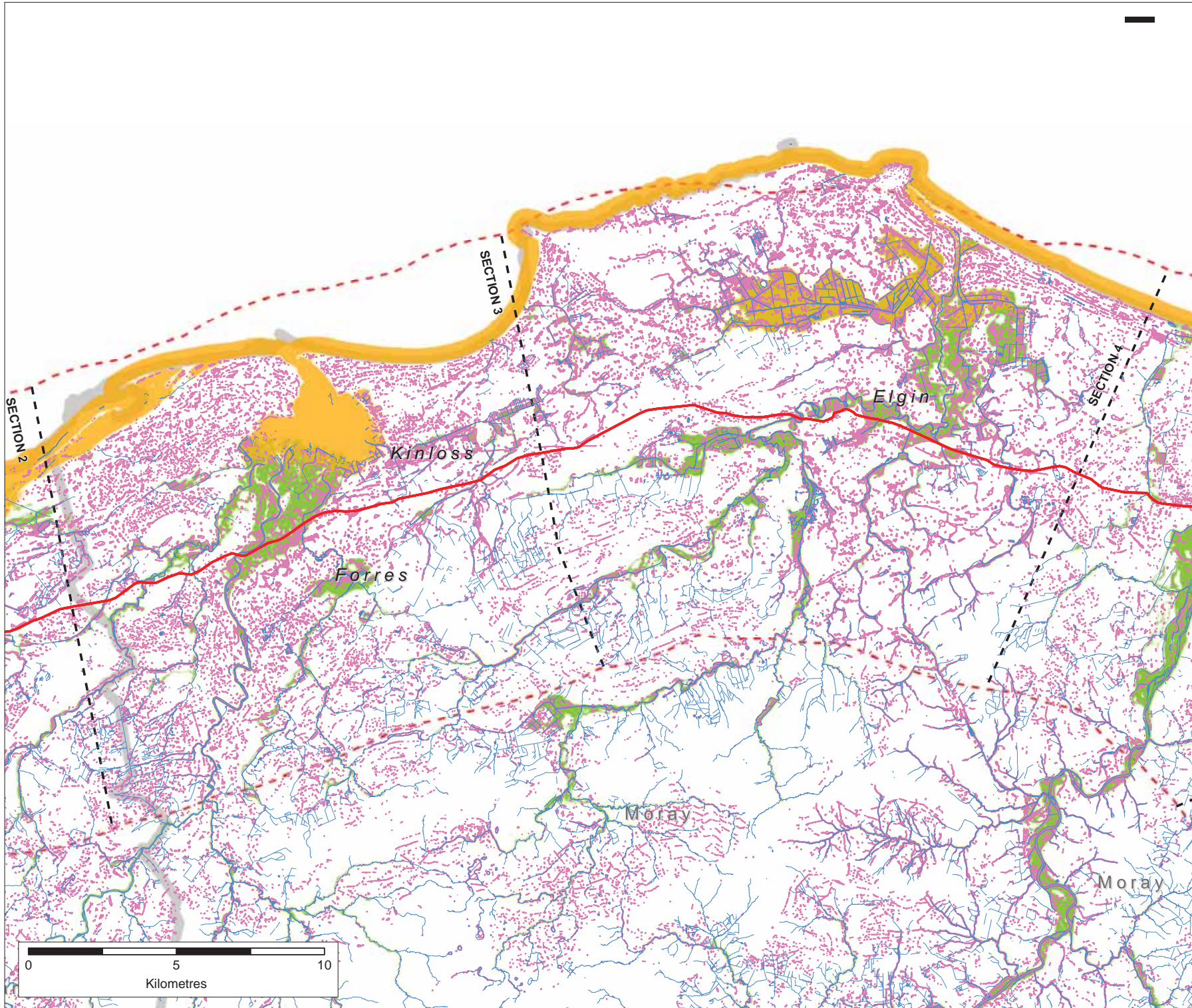
City Park,
395 Alexandra Parade,
Glasgow, G3 7LU
+44 (0)141 552 2000

Project
A96 Strategic Environmental Assessment

Drawing:
Baseline Constraints Mapping
Historic Environment - Battlefields & Scheduled Monument Sites

Drawn by:	Simon Greenwell	Date:	25/08/2014
Checked by:	Joe Hughes	Date:	25/08/2014
Approved by:	John Fox	Date:	25/08/2014

Drawing No:	TSEA96IER10051B	Rev	1
Drawing scale:	1:25,000		



Key

- A96 Route (Existing)
- SEA Baseline Study Section Break
- 15km Wide Baseline Study Area Boundary
- Watercourses
- Flood Zone - Surface Water (1 in 200 year)
- Flood Zone - Fluvial (1 in 200 year)
- Flood Zone - Coastal (1 in 200 year)

Rev	Rev date	Purpose of revision	Drawn	Checked	Approved

**A96
DUALLING**

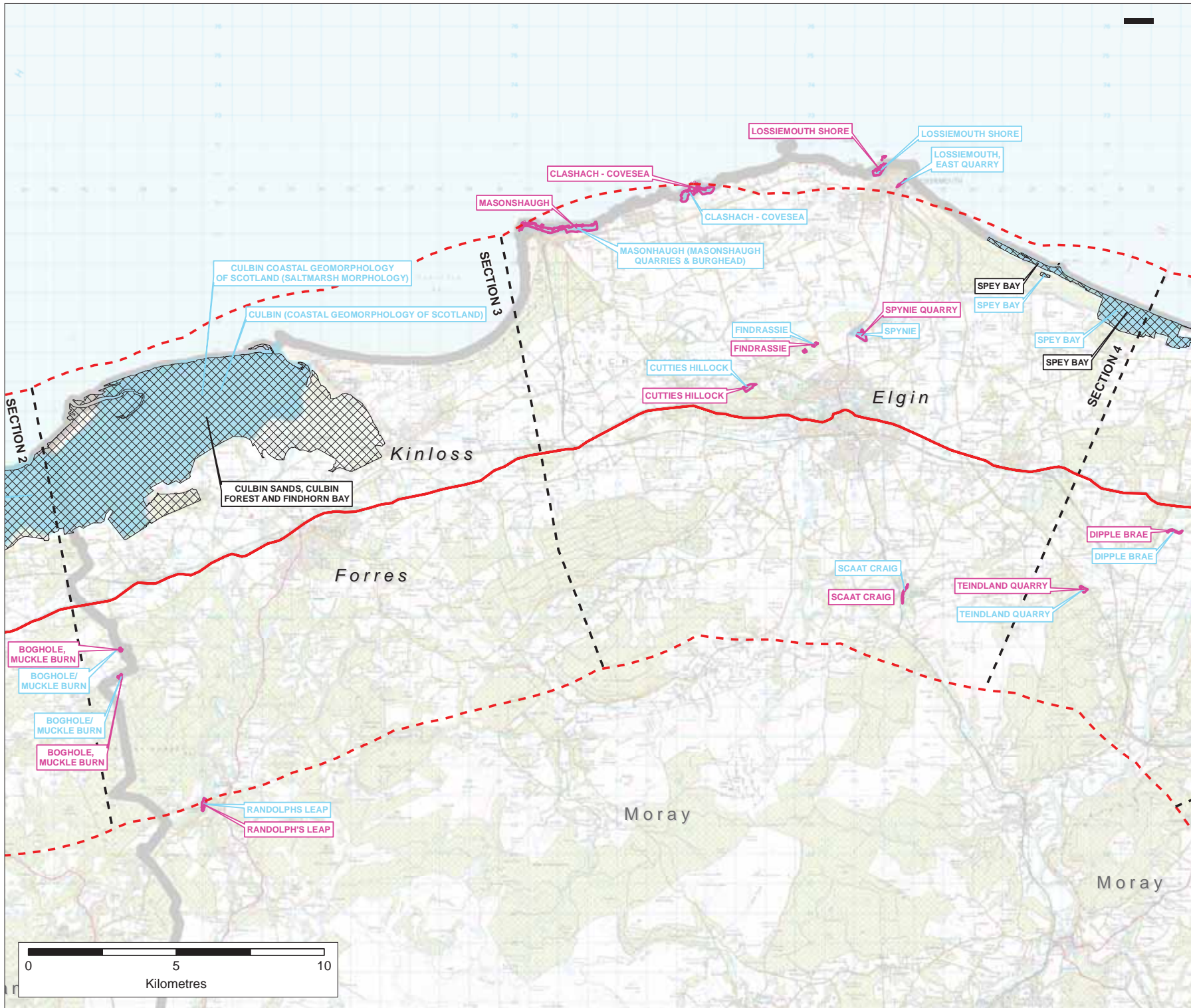
City Park,
398 Alexandra Parade,
Glasgow, G3 7LU
+44 (0)141 552 2000

Project
A96 Dualling - Strategic Environmental Assessment

Drawing:
Baseline Constraints Mapping
Water & Soils - Watercourses and Flood Zones (1 in 200 year)

Drawn by:	John Gibberd	Date:	25/08/2014
Checked by:	Tom Hughes	Date:	25/08/2014
Approved by:	John Fox	Date:	25/08/2014

Drawing No:	TSEA96/ER/1007/B	Rev	1
Drawing scale:	1:25,000		



- Key**
- A96 Route (Existing)
 - SEA Baseline Study Section Break
 - 15km Wide Baseline Study Area Boundary
 - Geological SSSI
 - Mixed SSSI
 - Geological Conservation Review



Rev	Rev date	Purpose of revision	Drawn	Checked	Approved

City Park,
395 Alexandra Parade,
Glasgow, G3 7LU
+44 (0)141 552 2000

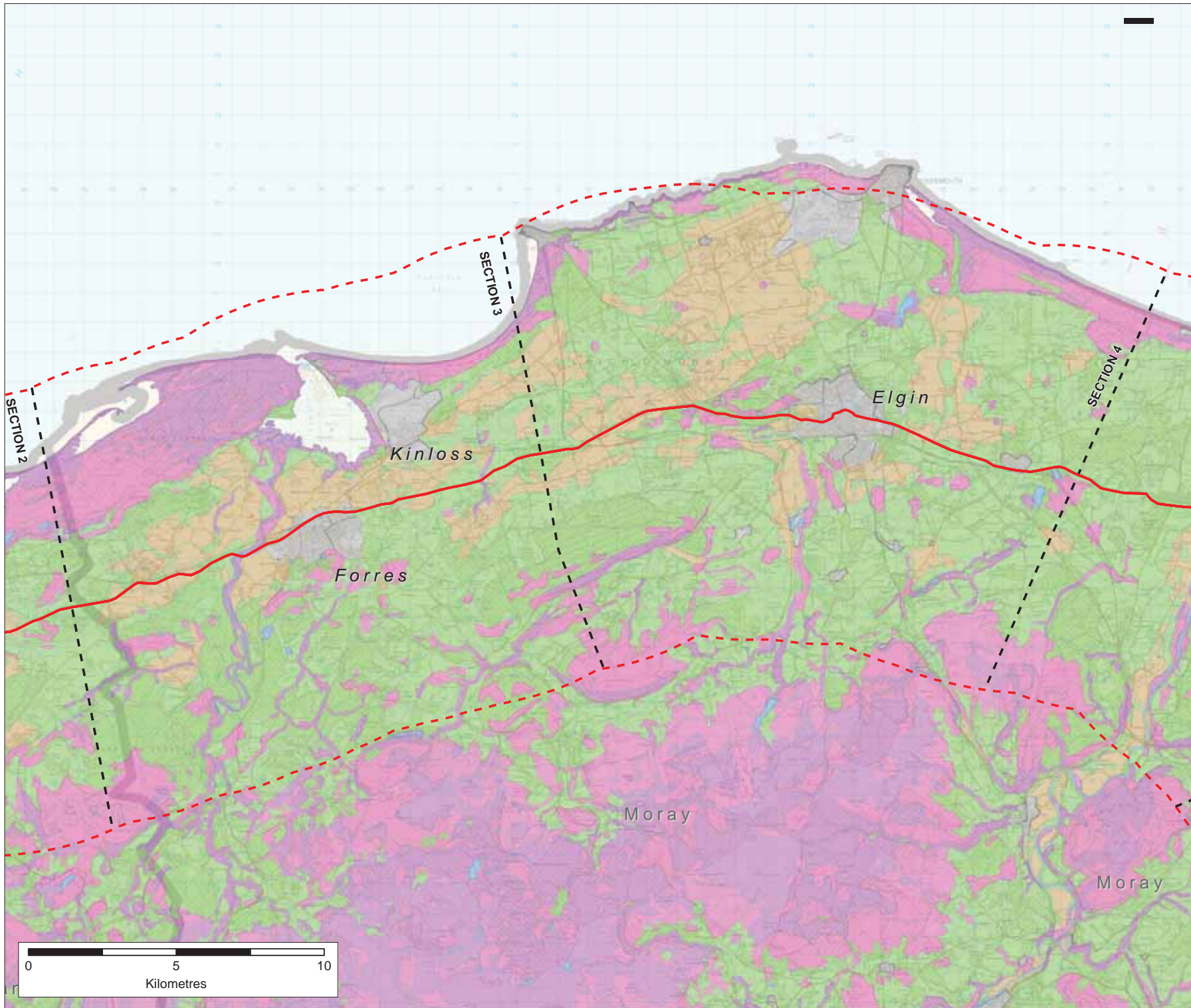
Project
A96 Strategic Environmental Assessment

Drawing:
Baseline Constraints Mapping
Water & Soils - Geological & Mixed SSSI and Geological
Conservation Review

Drawn by: John Gibbon	Date: 25/08/2014
Checked by: Ian Hughes	Date: 25/08/2014
Approved by: John Fox	Date: 25/08/2014

Drawing No: **TSEA96/ER1008/B** Rev 1

Drawing scale: 1:25,000



Key

- A96 Route (Existing)
- - - SEA Baseline Study Section Break
- - - 15km Wide Baseline Study Area Boundary

Land Capability for Agriculture (Grade)

- Arable Agriculture (Grade 1-3.1)
- Mixed Agriculture (Grade 3.2-4.2)
- Improved Grassland (Grade 5.1-5.3)
- Rough Grazing (Grade 6.1-7)
- Water
- Urban

Rev	Rev date	Purpose of revision	Drawn	Checked	Approved

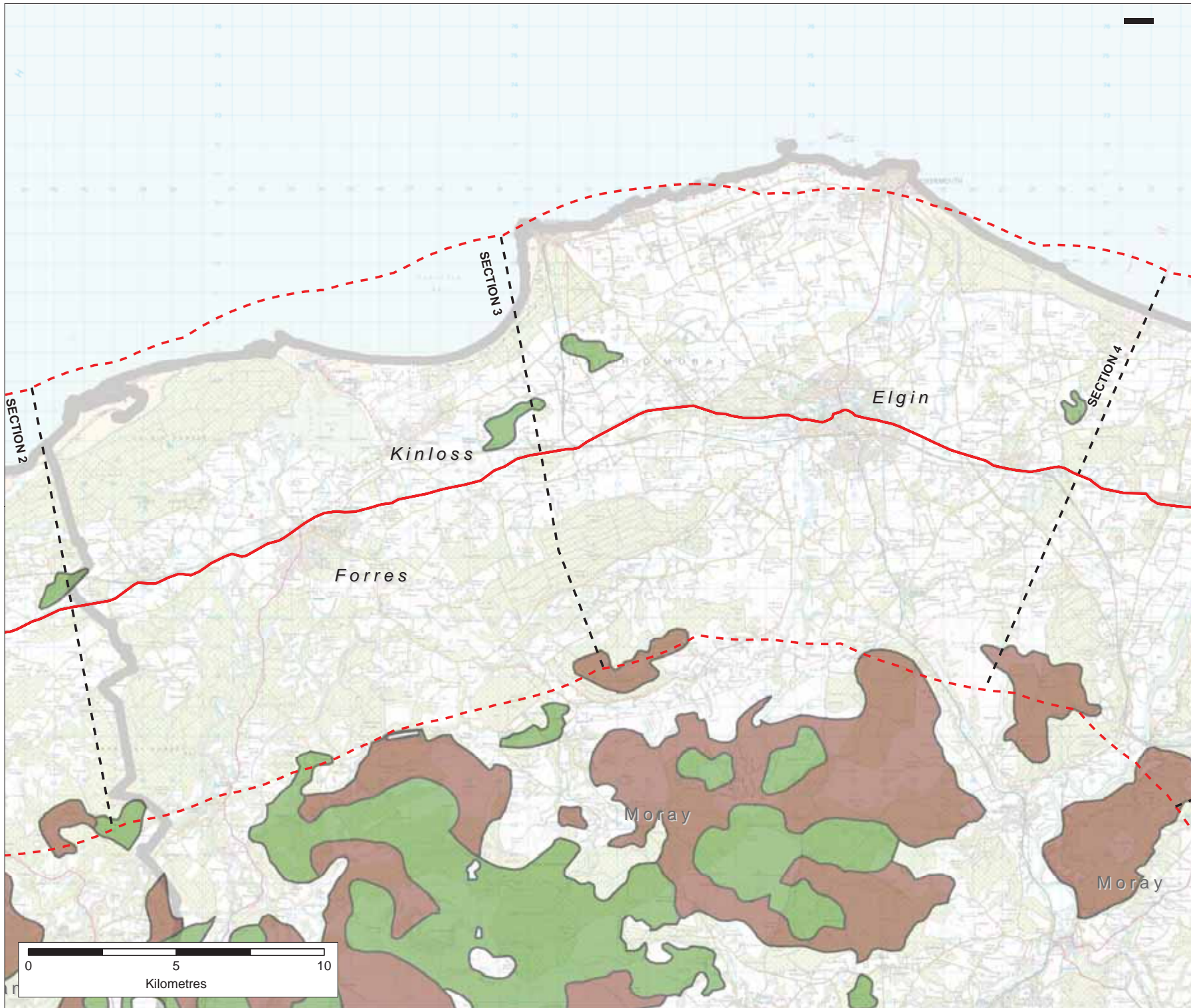


City Park,
359 Alexandra Parade,
Glasgow, G3 7LU
+44 (0)141 552 2000

Project
A96 Dualling - Strategic Environmental Assessment

Drawing:
Baseline Constraints Mapping
Water & Soils - Land Capability for Agriculture

Drawn by:	John Gibberd	Date:	25/08/2014
Checked by:	Tom Hughes	Date:	25/08/2014
Approved by:	John Fox	Date:	25/08/2014
Drawing No:	TSEA96/ER1009/B	Rev	1
Drawing scale:	1:25,000		



Key

- A96 Route (Existing)
- SEA Baseline Study Section Break
- 15km Wide Baseline Study Area Boundary

Soil Type

- Peat
- Peaty podzols

Rev	Rev date	Purpose of revision	Drawn	Checked	Approved



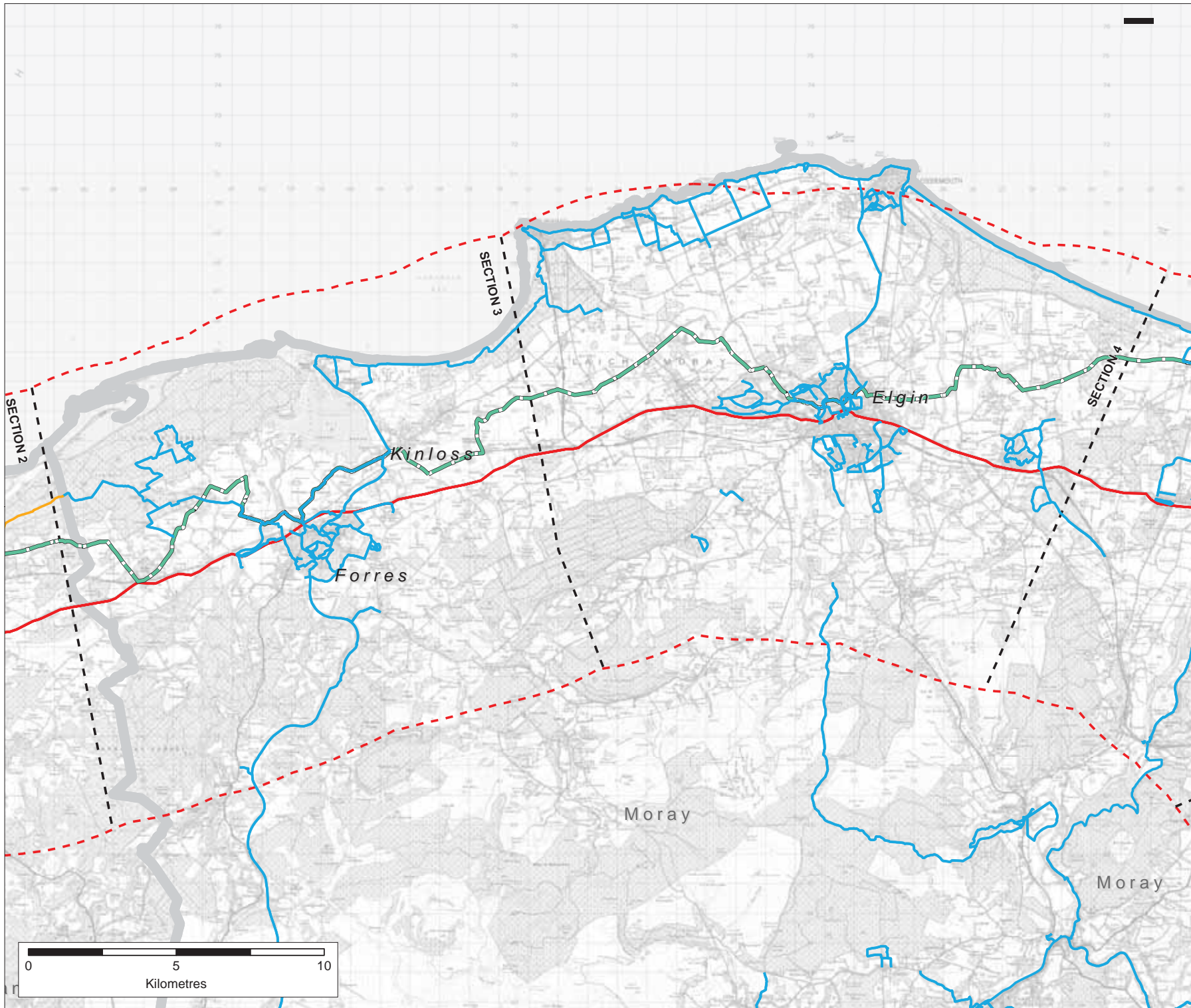
City Park,
398 Alexandra Parade,
Glasgow, G3 7LU
+44 (0)141 552 2000

Project
A96 Dualling - Strategic Environmental Assessment

Drawing:
Baseline Constraints Mapping
Water & Soils - Peat & Peaty Soils

Drawn by:	John Glenneville	Date:	25/08/2014
Checked by:	Tim Hughes	Date:	25/08/2014
Approved by:	John Fox	Date:	25/08/2014

Drawing No: **TSEA96ER11010B** Rev: **1**



- Key**
- A96 Route (Existing)
 - SEA Baseline Study Section Break
 - 15km Wide Baseline Study Area Boundary
 - Highland Council - Core Paths
 - Moray Council - Core Paths
 - Sustrans National Cycle Route - 1

Rev	Rev date	Purpose of revision	Drawn	Checked	Approved

City Park,
 300 Alexandra Parade,
 Glasgow, G3 7LU
 +44 (0)141 552 2000

Project
 A96 Dualling - Strategic Environmental Assessment

Drawing:
 Baseline Constraints Mapping
 Population and Human Health - Non Motorised Users (NMU)
 Core Paths and Cycle Routes

Drawn by: John Greenaway	Date: 25/08/2014
Checked by: Joe Hughes	Date: 25/08/2014
Approved by: John Fox	Date: 25/08/2014

Drawing No: TSEA96IER10111B **Rev** 1

Drawing scale: 1:25,000



© Crown copyright 2014

You may re-use this information (excluding logos) free of charge in any format or medium, under the terms of the Open Government Licence. To view this licence, visit <http://www.nationalarchives.gov.uk/doc/open-government-licence/> or e-mail: psi@nationalarchives.gsi.gov.uk.

Where we have identified any third party copyright information you will need to obtain permission from the copyright holders concerned.