



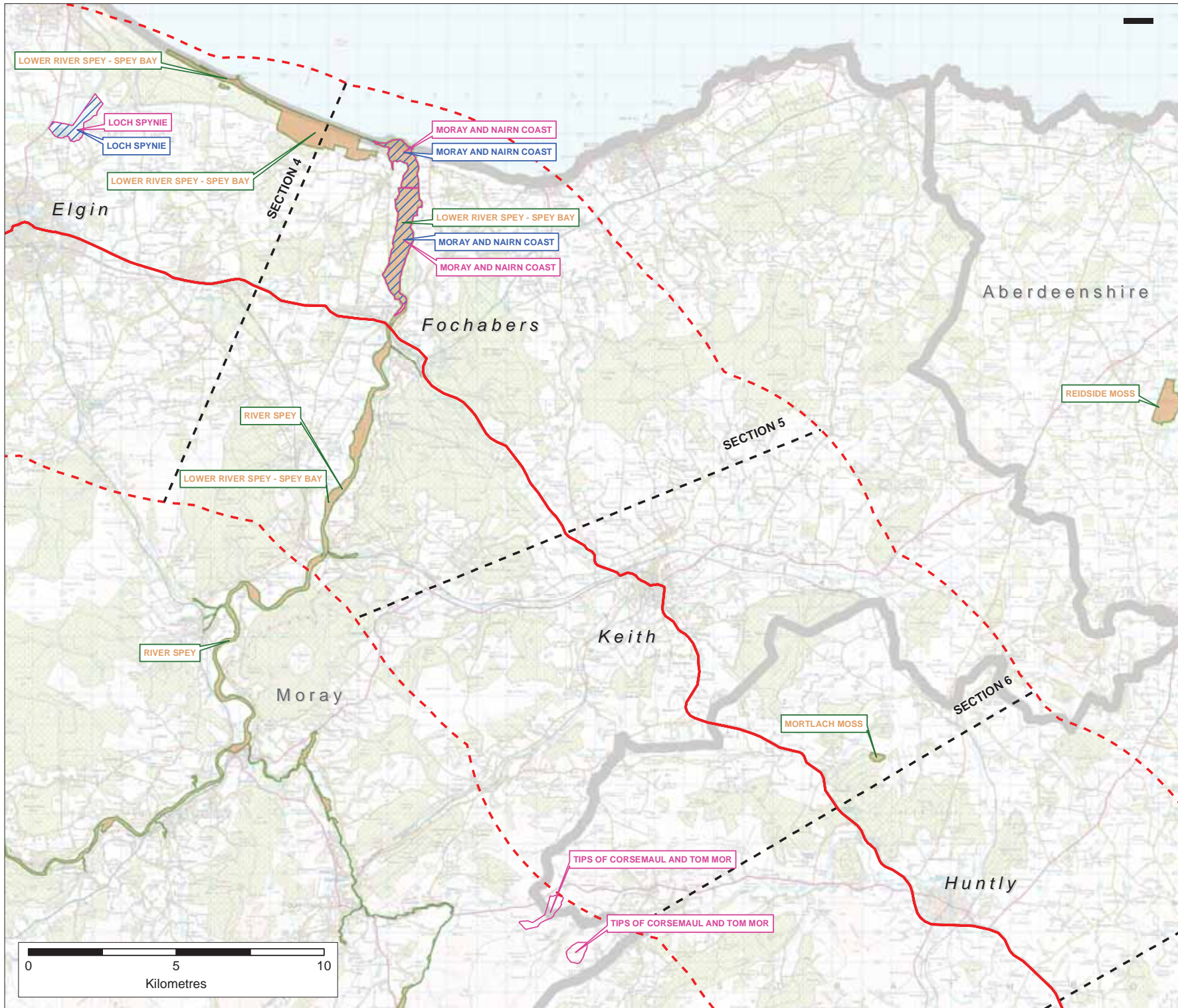
**TRANSPORT
SCOTLAND**
CÒMHDHAIL ALBA

A96 Dualling Programme

Strategic Environmental Assessment
Tier 1 Environmental Report

Appendix C - GIS Constraints Mapping
Baseline Study Area Sections 5 and 6

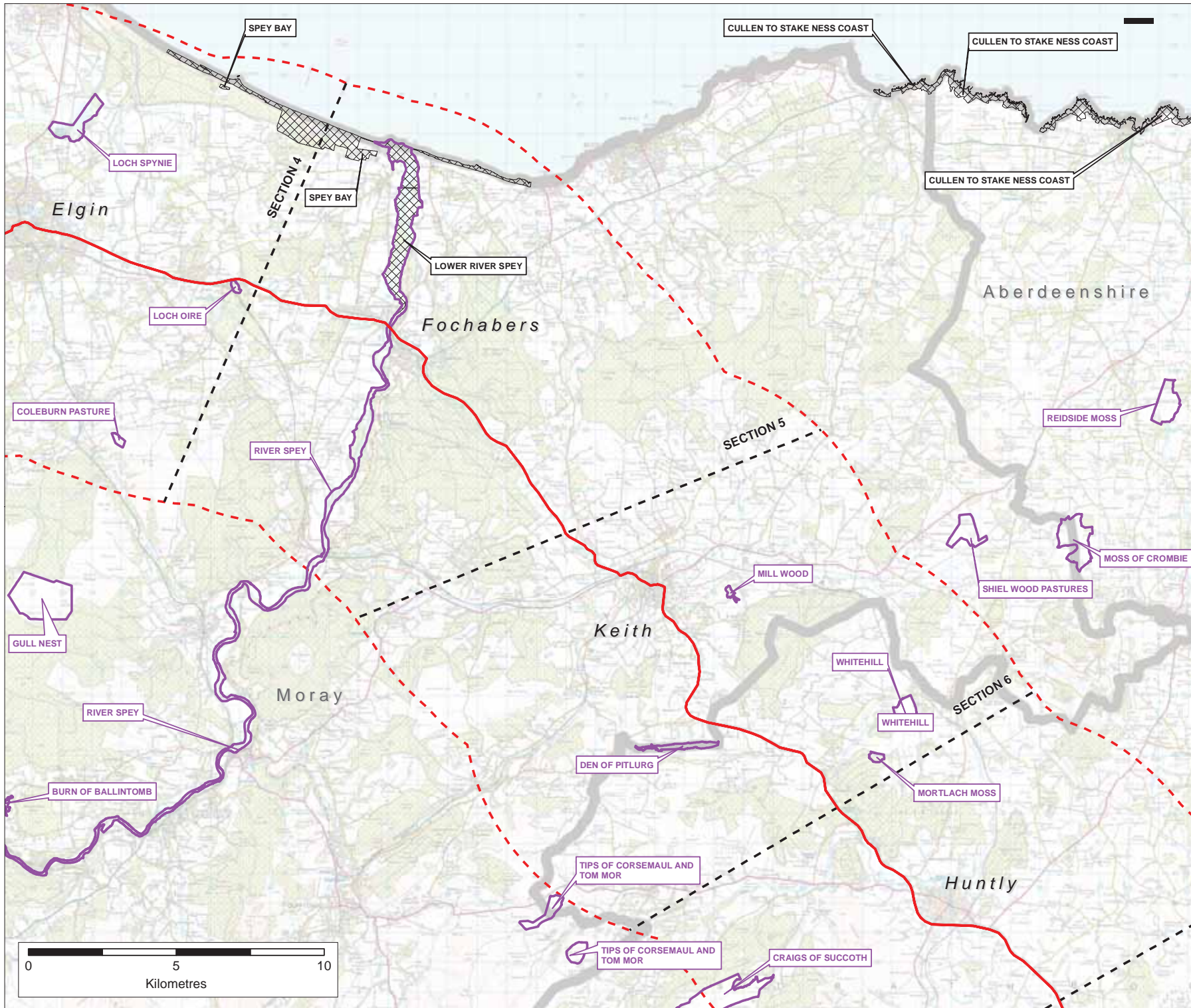
September 2014



Key

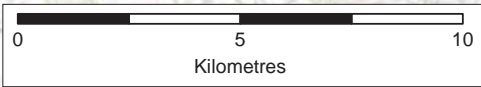
- A96 Route (Existing)
- SEA Baseline Study Section Break
- 15km Wide Baseline Study Area Boundary
- Special Protection Area
- Special Areas of Conservation
- Ramsar

Rev	Rev date	Purpose of revision	Drawn	Checked	Approved
Project: A96 Strategic Environmental Assessment					
Drawing: Baseline Constraints Mapping Biodiversity, Flora & Fauna - Natura and Ramsar Sites					
Drawn by:	John Greenwell	Date:	25/08/2014		
Checked by:	Tom Hughes	Date:	25/08/2014		
Approved by:	John Fox	Date:	25/08/2014		
Drawing No:	TSEA96IER10011C				Rev
Drawing scale:	1:25,000				1



Key

- A96 Route (Existing)
- - - SEA Baseline Study Section Break
- SSSI_Biological
- SSSI_Mixed
- 15km Wide Baseline Study Area Boundary



Rev	Rev date	Purpose of revision	Drawn	Checked	Approved

City Park,
355 Alexandra Parade,
Glasgow, G3 7LU
+44 (0)141 552 2000

Project
A96 Strategic Environmental Assessment

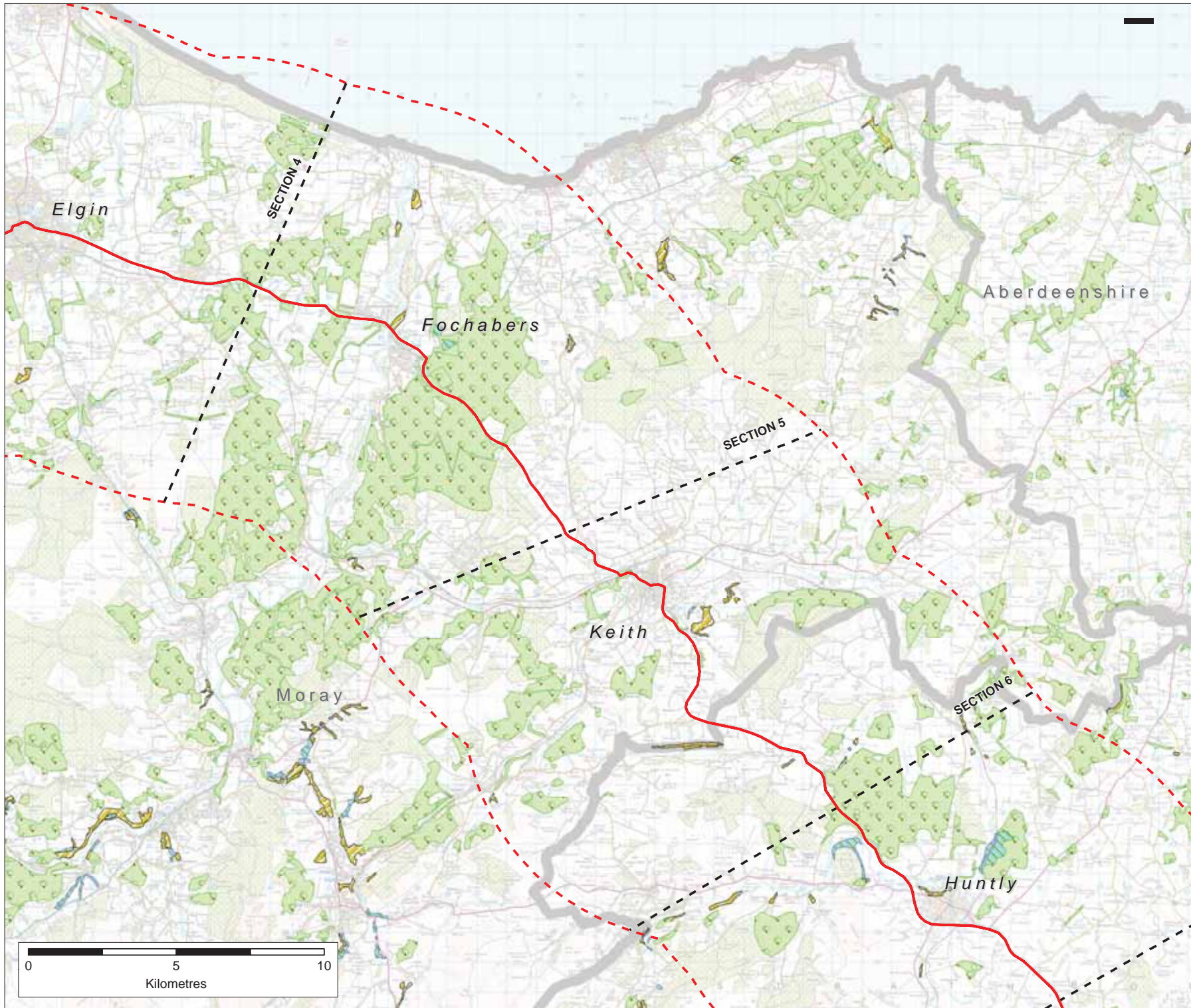
Drawing:
Baseline Constraints Mapping
Biodiversity, Flora & Fauna - Biological & Mixed SSSI Sites

Drawn by: Jason Greenwood	Date: 25/08/2014
Checked by: Joe Hughes	Date: 25/08/2014
Approved by: John Fox	Date: 25/08/2014

Drawing No:
TSEA96IER1002IC

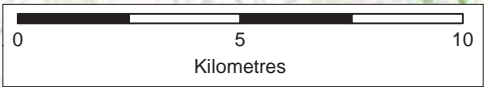
Rev 1

Drawing scale: 1:25,000



Key

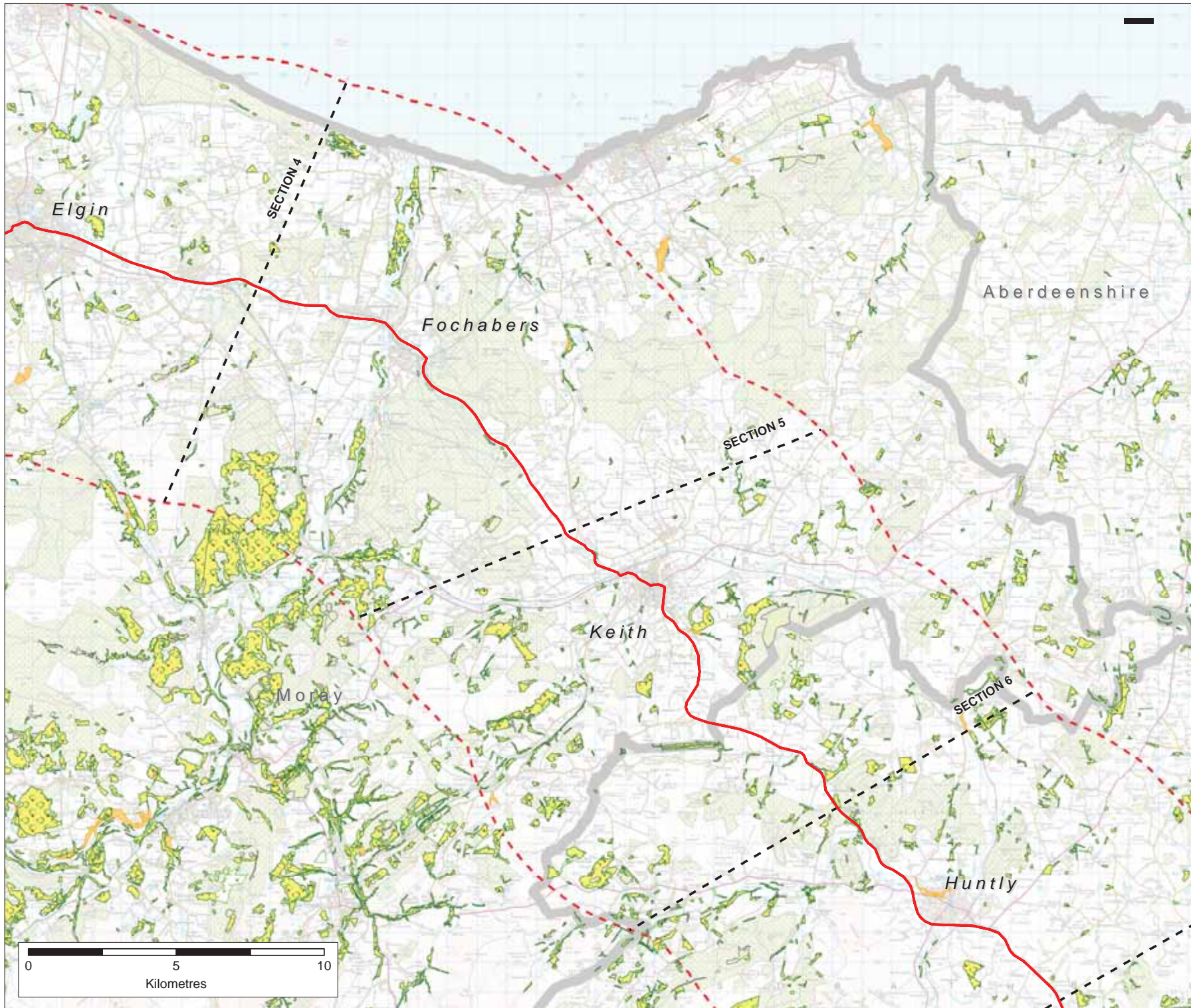
- A96 Route (Existing)
- - - SEA Baseline Study Section Break
- - - 15km Wide Baseline Study Area Boundary
- Ancient Woodland - Plantation
- Ancient Woodland - Semi Natural
- Ancient Woodland - Roy



Rev	Rev date	Purpose of revision	Drawn	Checked	Approved

City Park,
 358 Alexandra Parade,
 Glasgow, G3 7LU
 +44 (0)141 552 2000

Project		A96 Strategic Environmental Assessment	
Drawing: Baseline Constraints Mapping Biodiversity, Flora & Fauna - Ancient Woodland Inventory			
Client:	Scottish Government	Date:	25/08/2014
Drawn by:	Joe Maguire	Date:	25/08/2014
Approved by:	John Fox	Date:	25/08/2014
Drawing No:	TSEA96/ER10031C	Rev	1
Drawing scale:	1:25,000		



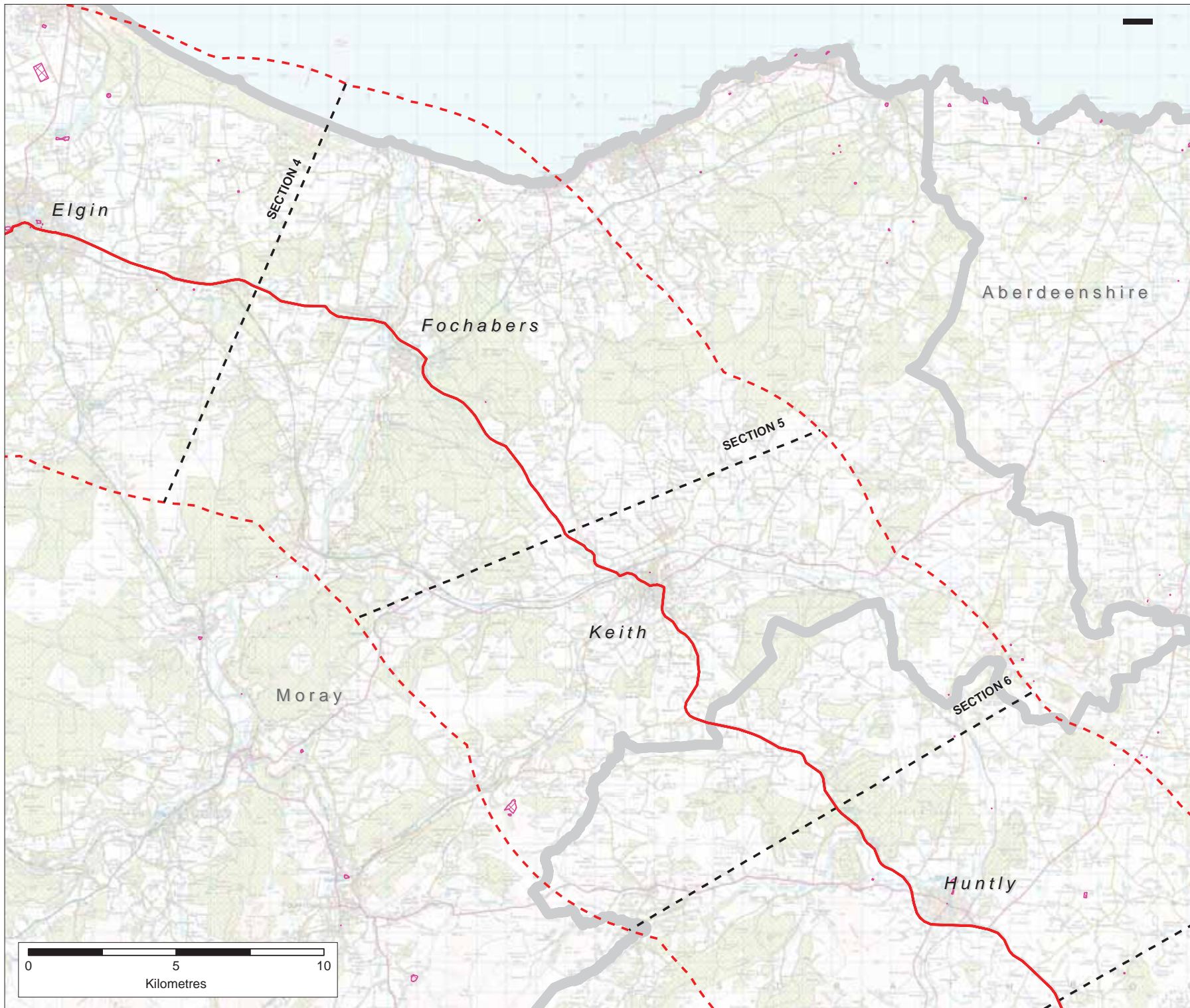
Key

- A96 Route (Existing)
 - SEA Baseline Study Section Break
 - 15km Wide Baseline Study Area Boundary
- Native Woodland Survey Type**
- Native Woodland
 - Nearly-Native Woodland
 - Open Land Habitat
 - PAWS (Plantation on Ancient Woodland Site)

Rev	Rev date	Purpose of revision	Drawn	Checked	Approved

City Park,
 350 Alexandra Parade,
 Glasgow, G3 7LU
 +44 (0)141 552 2000

Project		A96 Strategic Environmental Assessment	
Drawing: Baseline Constraints Mapping Biodiversity, Flora & Fauna - Native Woodland Survey of Scotland			
Drawn by:	Gordon Greenwood	Date:	25/08/2014
Checked by:	John Fife	Date:	25/08/2014
Approved by:	John Fife	Date:	25/08/2014
Drawing No:	TSEA96IER1004IC		Rev
Drawing scale:	1:25,000		1



Key

- A96 Route (Existing)
- - - SEA Baseline Study Section Break
- - - 15km Wide Baseline Study Area Boundary
- Scheduled Monuments

Rev	Rev date	Purpose of revision	Drawn	Checked	Approved



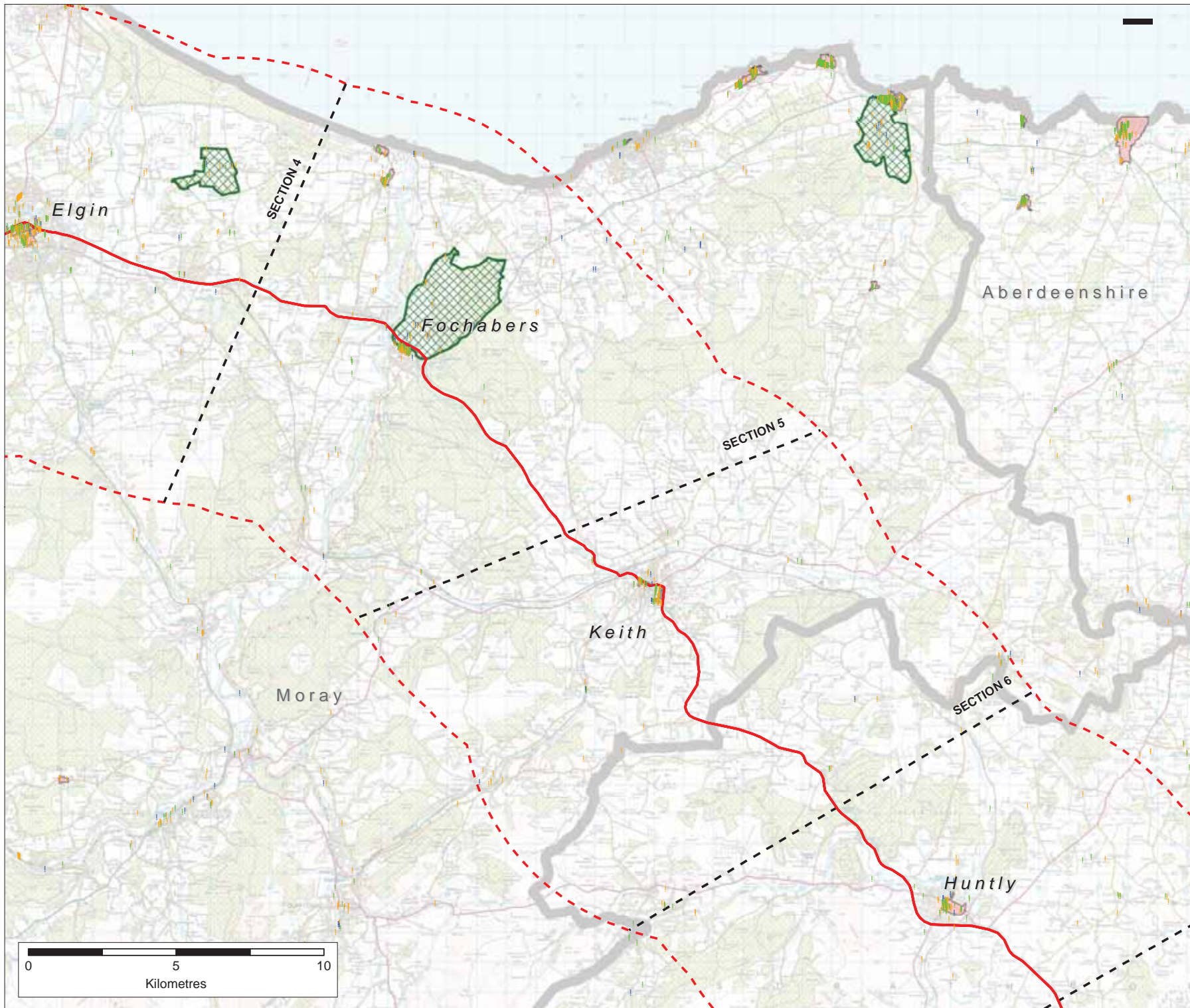
City Park,
350 Alexandra Parade,
Glasgow, G3 7LU
+44 (0)141 552 2000

Project
A96 Strategic Environmental Assessment

Drawing: Baseline Constraints Mapping
Historic Environment - Battlefields & Scheduled Monument Sites

Designer:	Simon Greenwood	Date:	25/08/2014
Checker:	Joe Hughes	Date:	25/08/2014
Approver:	John Fox	Date:	25/08/2014

Drawing No:	TSEA96IER10051C	Rev	1
Drawing scale:	1:25,000		



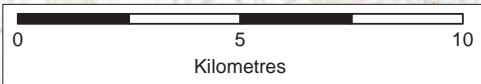
Key

- A96 Route (Existing)
- SEA Baseline Study Section Break
- 15km Wide Baseline Study Area Boundary

Listed Buildings

- Category A
- Category B
- Category C

- Conservation Areas
- Gardens & Designed Landscapes



Rev	Rev date	Purpose of revision	Drawn	Checked	Approved



City Park,
355 Abercromby Parade,
Glasgow, G3 7JL
+44 (0)141 552 2000

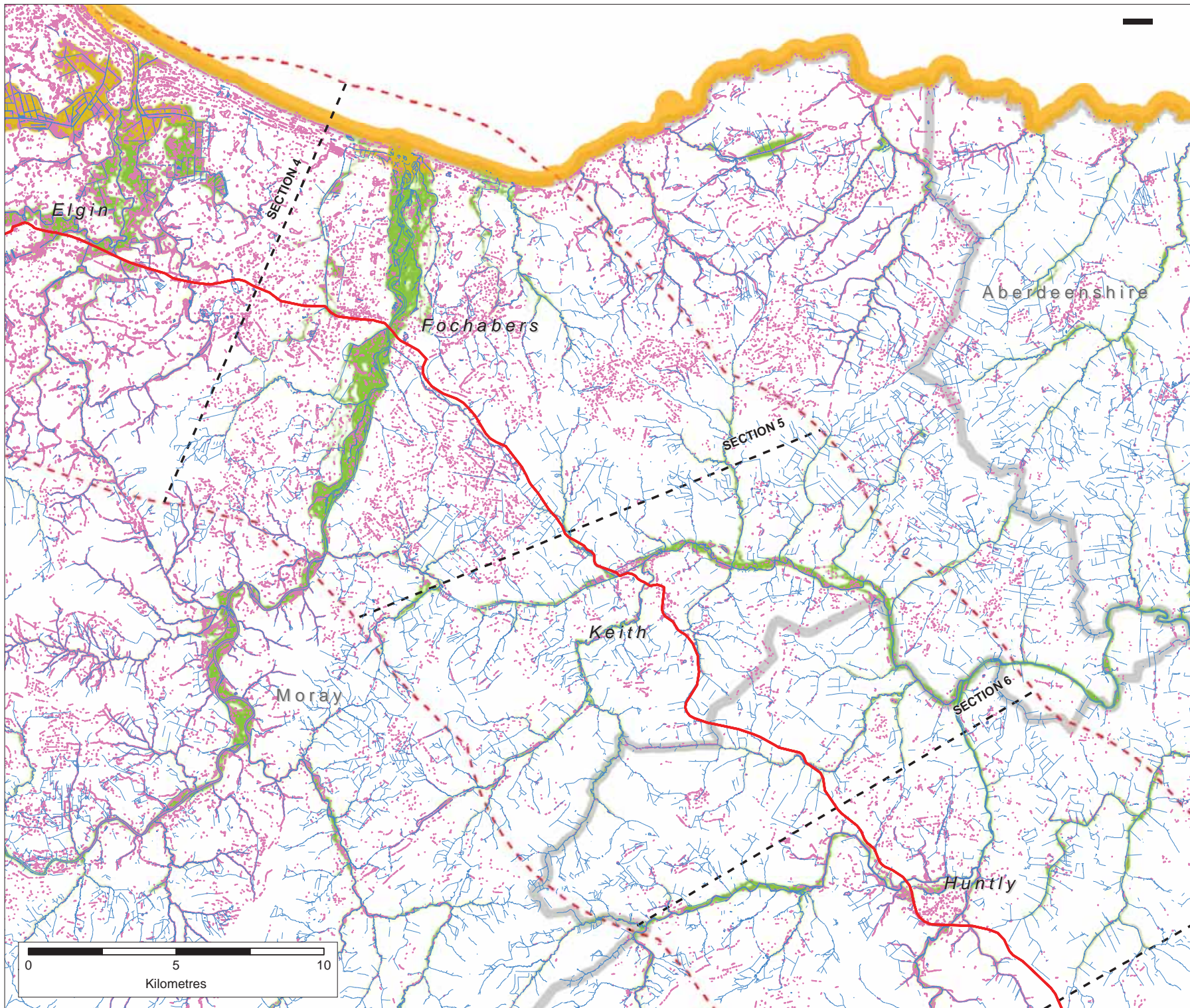
Project
A96 Dualling - Strategic Environmental Assessment

Drawing:
Baseline Constraints Mapping
Historic Environment - Gardens & Designed Landscapes,
Listed Buildings (CAT A/B/C) & Conservation Areas








Drawn by:	James Greenwell	Date:	25/08/2014
Checked by:	Tim Hughes	Date:	25/08/2014
Approved by:	John Fox	Date:	25/08/2014

Drawing No:
TSEA96IER10061C

Rev: 1



Key

-  A96 Route (Existing)
-  SEA Baseline Study Section Break
-  15km Wide Baseline Study Area Boundary
-  Watercourses
-  Flood Zone - Surface Water (1 in 200 year)
-  Flood Zone - Fluvial (1 in 200 year)
-  Flood Zone - Coastal (1 in 200 year)

Rev	Rev date	Purpose of revision	Drawn	Checked	Approved



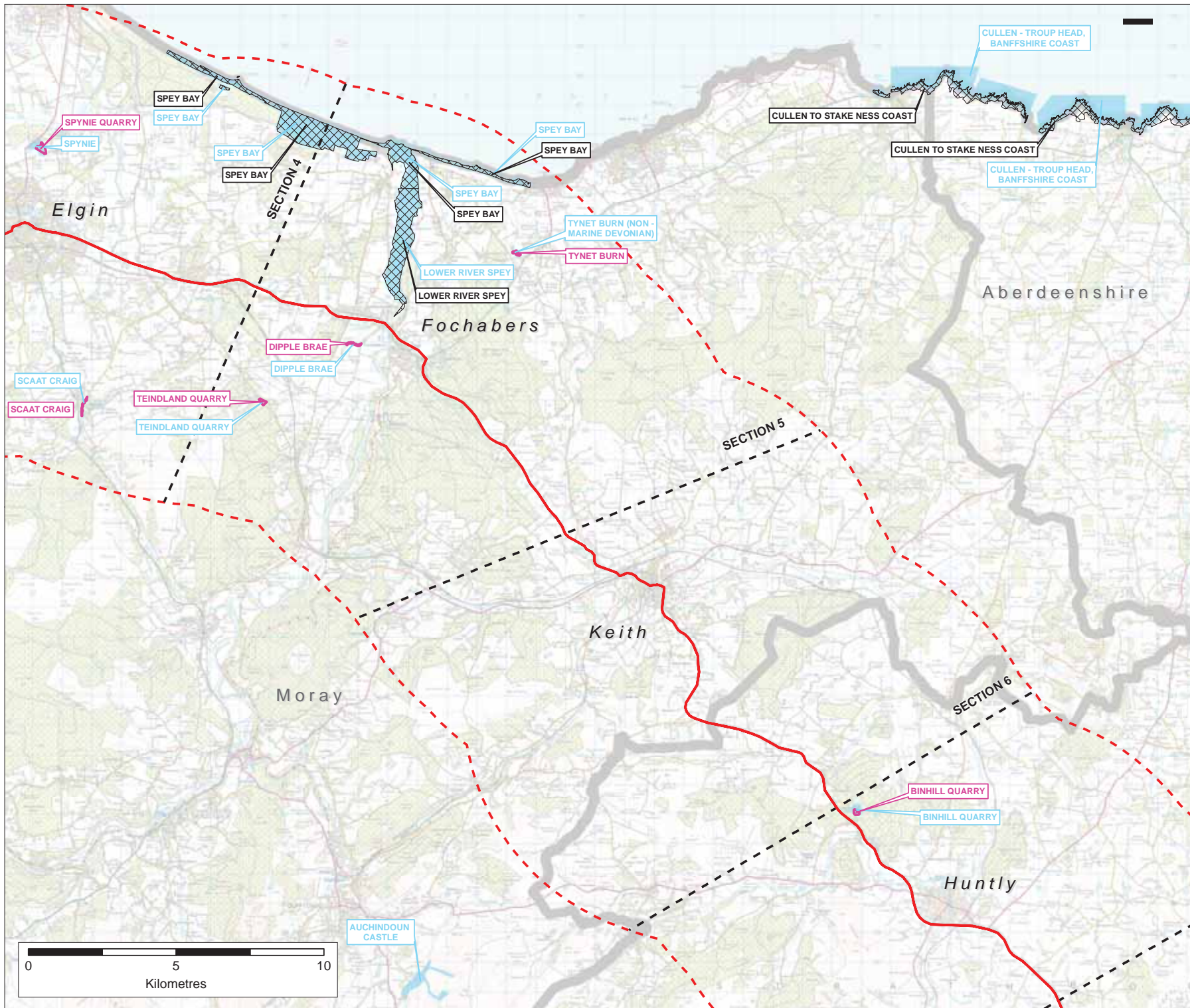
City Park,
398 Alexandra Parade,
Glasgow, G3 7JL
+44 (0)141 552 2000

Project
A96 Dualling - Strategic Environmental Assessment

Drawing: Baseline Constraints Mapping
Water & Soils - Watercourses and Flood Zones (1 in 200 year)

Drawn by:	John Gibberd	Date:	25/08/2014
Checked by:	Tom Hughes	Date:	25/08/2014
Approved by:	John Fox	Date:	25/08/2014



Drawing No:	TSEA96/ER1007/C	Rev	1
Drawing scale:	1:25,000		



- Key**
- A96 Route (Existing)
 - SEA Baseline Study Section Break
 - 15km Wide Baseline Study Area Boundary
 - Geological SSSI
 - Mixed SSSI
 - Geological Conservation Review



Rev	Rev date	Purpose of revision	Drawn	Checked	Approved

City Park,
359 Alexandra Parade,
Glasgow, G3 7LU
+44 (0)141 552 2000

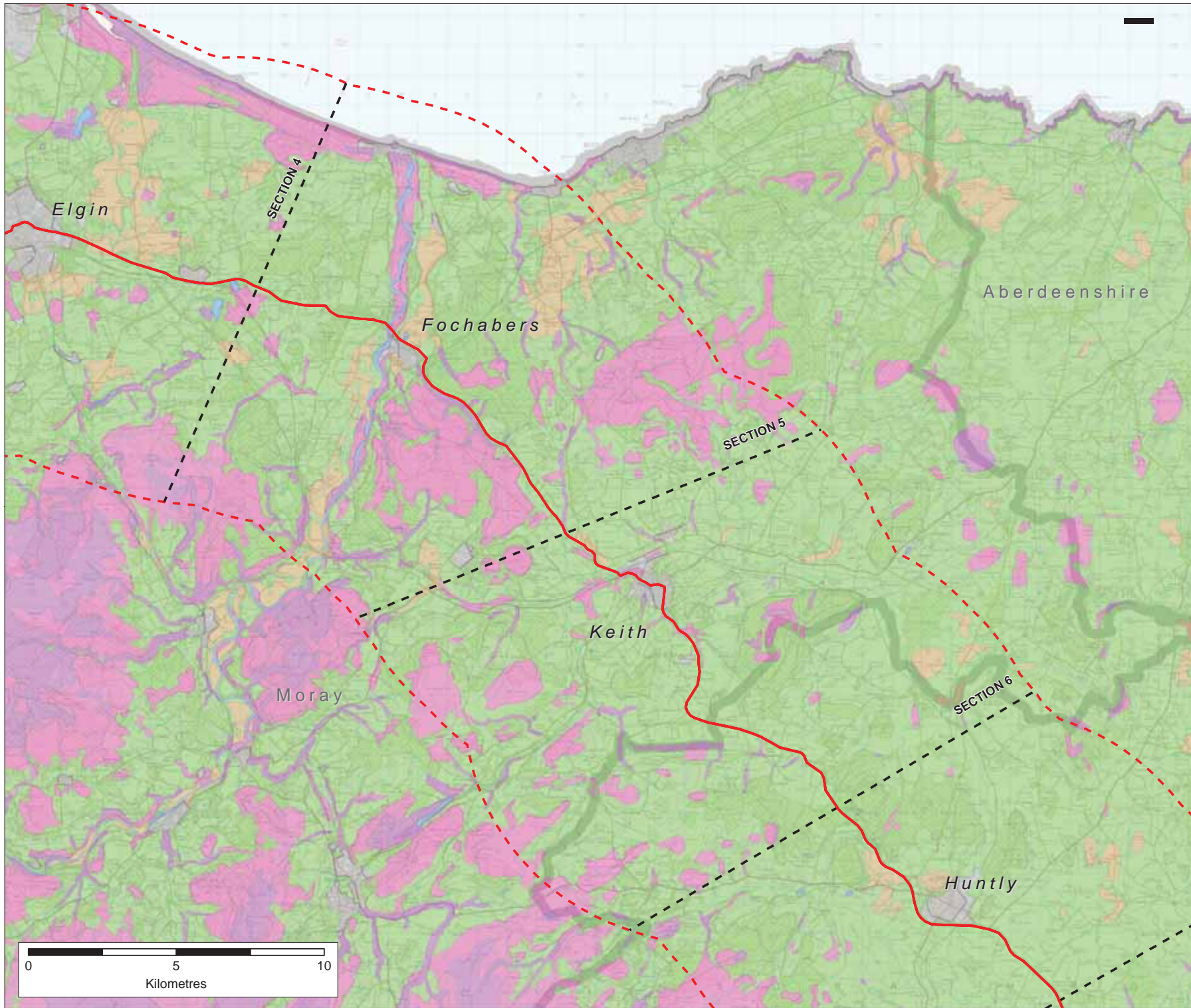
Project
A96 Strategic Environmental Assessment

Drawing:
**Baseline Constraints Mapping
Water & Soils - Geological & Mixed SSSI and Geological
Conservation Review**

Drawn by: John Greenwell	Date: 25/08/2014
Checked by: John Greenwell	Date: 25/08/2014
Approved by: John Fox	Date: 25/08/2014

Drawing No: **TSEA96IER1008IC** Rev: **1**

Drawing scale: 1:25,000

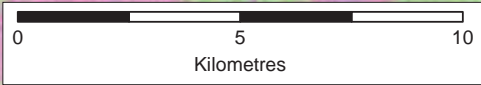


Key



- A96 Route (Existing)
- SEA Baseline Study Section Break
- 15km Wide Baseline Study Area Boundary

Land Capability for Agriculture (Grade)

- Arable Agriculture (Grade 1-3.1)
- Mixed Agriculture (Grade 3.2-4.2)
- Improved Grassland (Grade 5.1-5.3)
- Rough Grazing (Grade 6.1-7)
- Water
- Urban



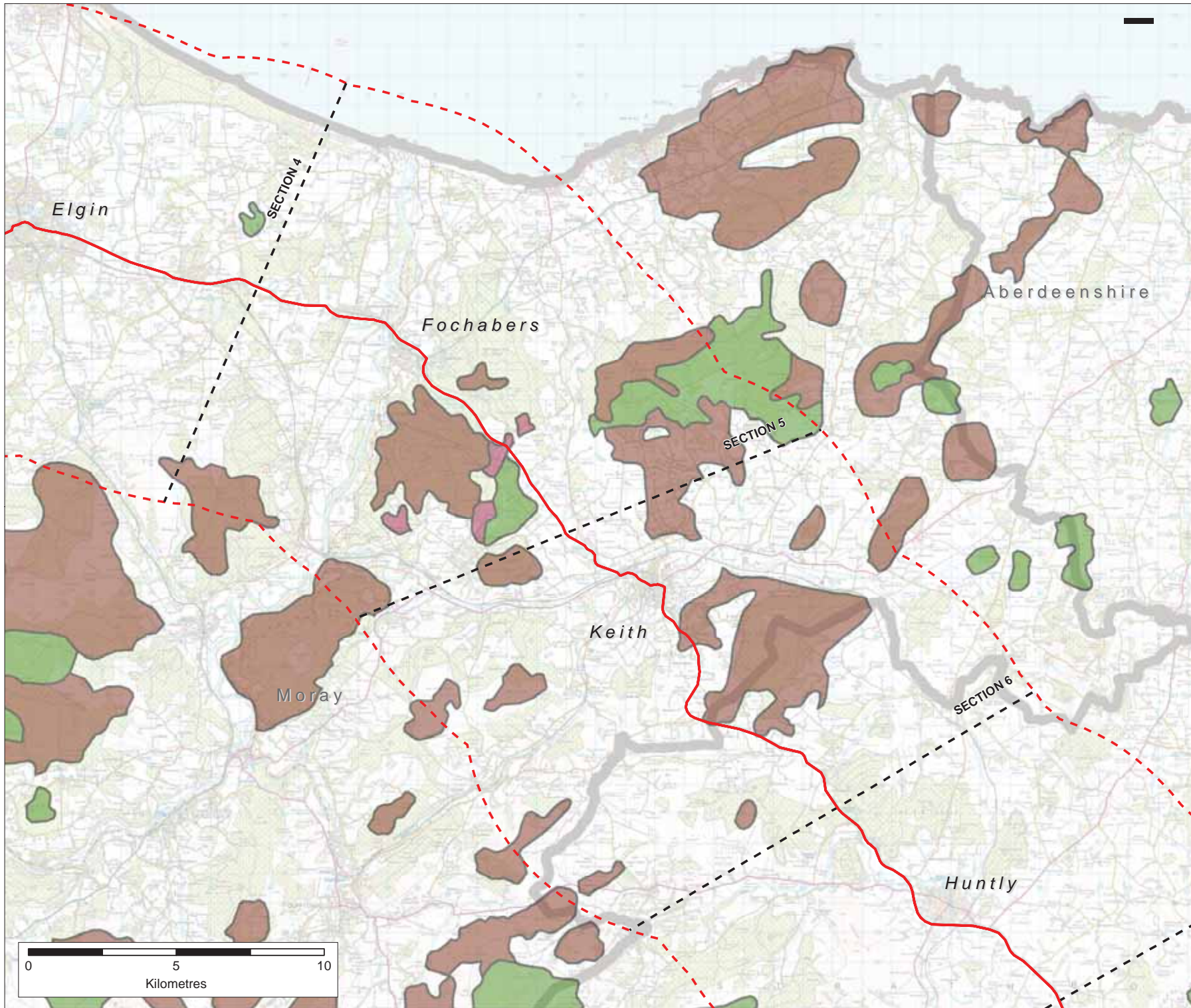
Rev	Rev date	Purpose of revision	Drawn	Checked	Approved



City Park,
399 Alexandra Parade,
Glasgow, G3 7LU
+44 (0)141 552 2000

Project	
A96 Dualling - Strategic Environmental Assessment	
Drawing	
Baseline Constraints Mapping Water & Soils - Land Capability for Agriculture	
Designer	Date
Checked by	Date
Approver	Date
Drawing No:	Rev
TSEA96IER1009IC	1
Drawing scale:	1:25,000

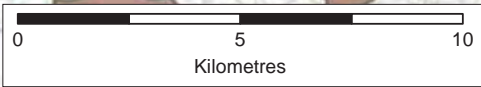


Key

- A96 Route (Existing)
- SEA Baseline Study Section Break
- 15km Wide Baseline Study Area Boundary

Soil Type

- Peat
- Peaty gleys
- Peaty podzol
- Peaty podzols



Rev	Rev date	Purpose of revision	Drawn	Checked	Approved



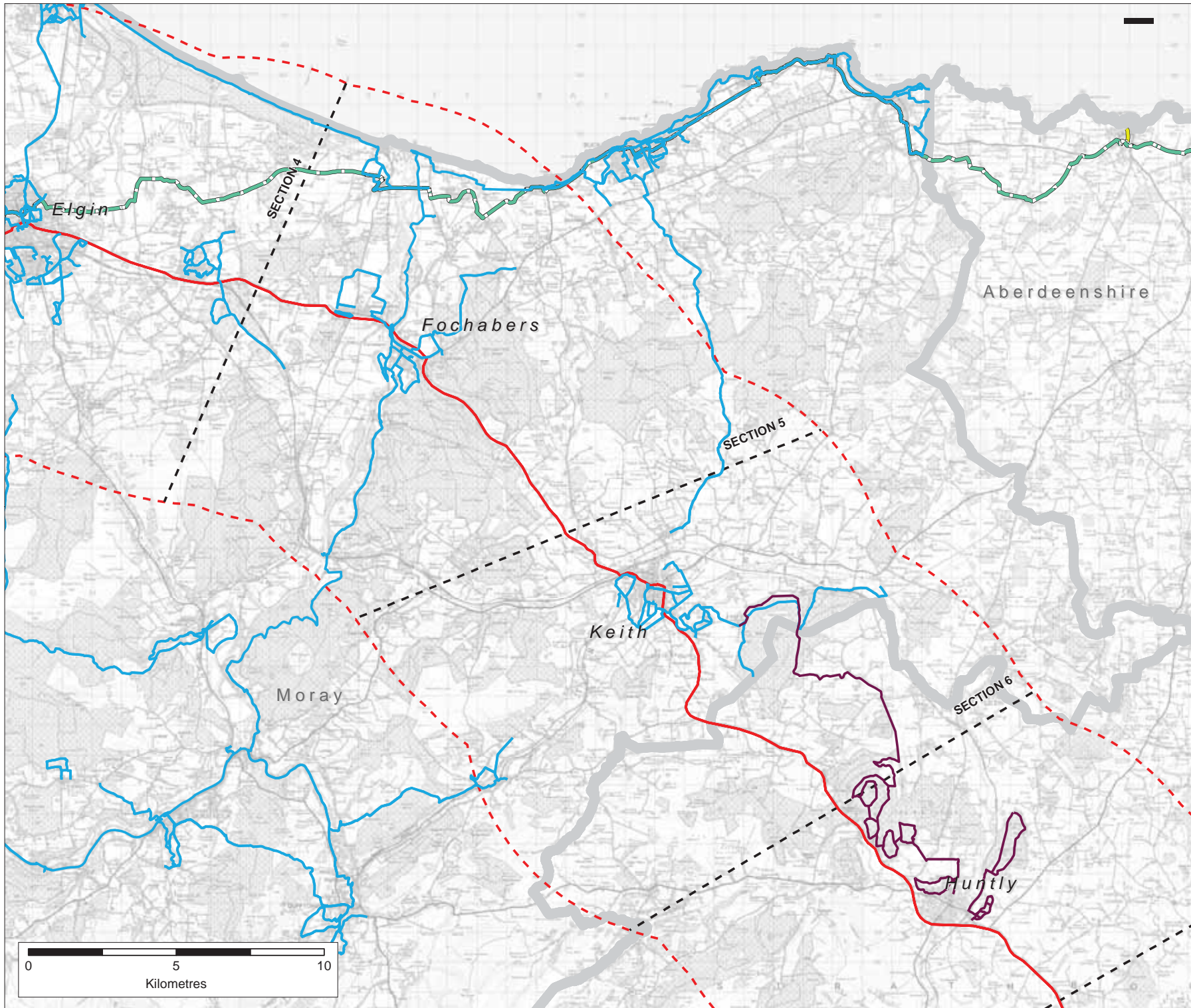
City Park,
359 Alexandra Parade,
Glasgow, G3 7LU
+44 (0)141 552 2000

Project
A96 Dualling - Strategic Environmental Assessment

Drawing:
Baseline Constraints Mapping
Water & Soils - Peat & Peaty Soils

Drawn by:	John Glenneville	Date:	25/08/2014
Checked by:	Tom Hughes	Date:	25/08/2014
Approved by:	John Fox	Date:	25/08/2014

Drawing No: **TSEA96IER10101C** Rev: **1**



Key

- A96 Route (Existing)
- - - SEA Baseline Study Section Break
- - - 15km Wide Baseline Study Area Boundary
- Aberdeenshire Council - Core Paths
- Moray Council - Core Paths
- Sustrans National Cycle Route - 1
- Sustrans National Cycle Network Link

Rev	Rev date	Purpose of revision	Drawn	Checked	Approved




City Park,
 350 Alexandra Parade,
 Glasgow, G3 7LU
 +44 (0)141 552 2000



Project
A96 Dualling - Strategic Environmental Assessment

Drawing:
Baseline Constraints Mapping
Population and Human Health - Non Motorised Users (NMU)
Core Paths and Cycle Routes

Drawn by:	John Greenaway	Date:	25/08/2014
Checked by:	Joe Hughes	Date:	25/08/2014
Approved by:	John Fox	Date:	25/08/2014

Drawing No:	TSEA96IER10111C	Rev:	1
Drawing scale:	1:25,000		



© Crown copyright 2014

You may re-use this information (excluding logos) free of charge in any format or medium, under the terms of the Open Government Licence. To view this licence, visit <http://www.nationalarchives.gov.uk/doc/open-government-licence/> or e-mail: psi@nationalarchives.gsi.gov.uk.

Where we have identified any third party copyright information you will need to obtain permission from the copyright holders concerned.