

- Legend**
- Proposed scheme (DMRB Stage 3 Design)
 - SuDS
 - 500m Study area
 - CNPA wildcat records
- Potential Wildcat Habitats**
- Wildcat cover habitats
 - Wildcat prey habitats
 - Wildcat movement habitats
- Crossing Structure Permeability**
- ◆ Good
 - ◆ Possible
 - ◆ Unsuitable
 - ◆ Unknown

0	NOV 2017	ES Publication	EM	LM	PG	AJG
Rev.	Rev. Date	Purpose of revision	Orig/Dwn	Check'd	Rev'd	Apprv'd

JACOBS
 95 Bothwell Street, Glasgow, G2 7HX, UK.
 Tel: +44(0)141 243 8000
 www.jacobs.com

Client

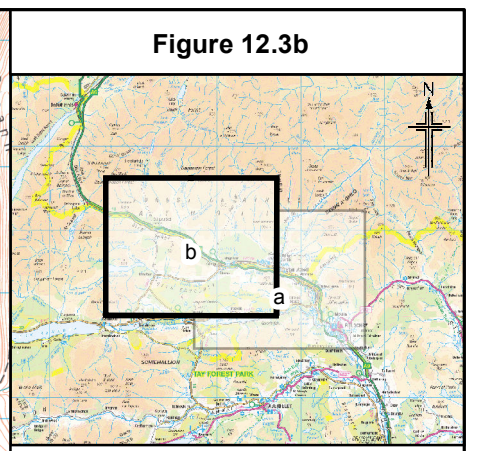
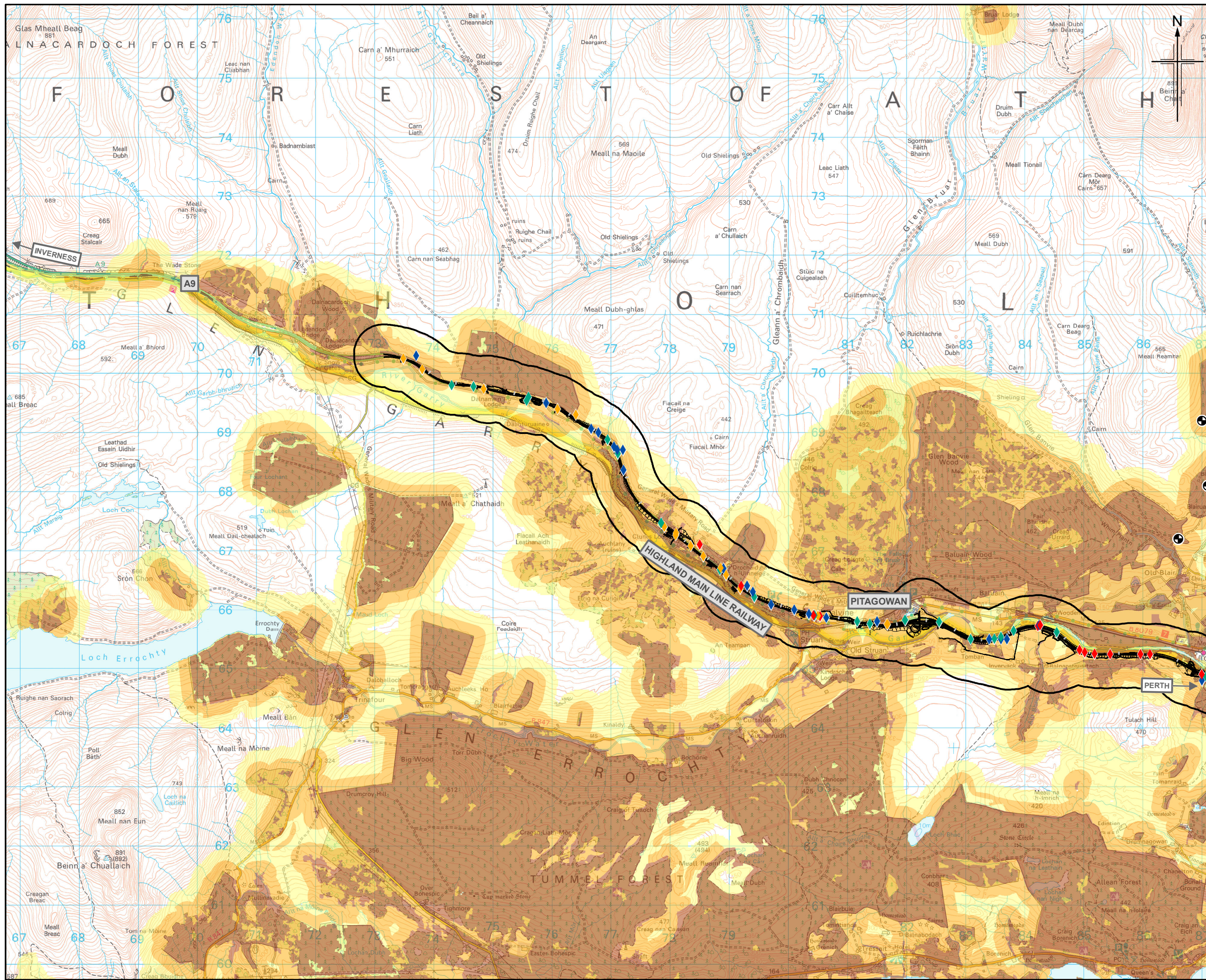
 TRANSPORT SCOTLAND
 COPHDHAL ALBA

Project

A9 DUALLING
 PERTH TO INVERNESS
 Killiecrankie to Glen Garry

Drawing title
**Environmental Statement
 Wildcat Habitat Suitability
 Model and Incidental Records**

Drawing Status	FINAL	Sheet 1 of 2
Scale	1:60,000 @ A3	DO NOT SCALE
Jacobs No.	B2140005	
BIM No.		
Drawing number	Figure 12.3a	Rev 0



- Legend**
- Proposed scheme (DMRB Stage 3 Design)
 - SuDS
 - 500m Study area
 - CNPA wildcat records
- Potential Wildcat Habitats**
- Wildcat cover habitats
 - Wildcat prey habitats
 - Wildcat movement habitats
- Crossing Structure Permeability**
- Good
 - Possible
 - Unsuitable
 - Unknown

0	NOV 2017	ES Publication	EM	LM	PG	AJG
Rev.	Rev. Date	Purpose of revision	Orig/Dwn	Checkd	Rev'd	Apprv'd

JACOBS
 95 Bothwell Street, Glasgow, G2 7HX, UK.
 Tel: +44(0)141 243 8000
 www.jacobs.com

Client
TRANSPORT SCOTLAND
 COMHIDHAL ALBA

Project
A9 DUALLING
 PERTH TO INVERNESS
 Killiecrankie to Glen Garry

Drawing title
**Environmental Statement
 Wildcat Habitat Suitability
 Model and Incidental Records**

Drawing Status	FINAL	Sheet 2 of 2
Scale	1:60,000 @ A3	DO NOT SCALE
Jacobs No.	B2140005	
BIM No.		
Drawing number	Figure 12.3b	Rev 0

