

**Legend**

- Proposed scheme (DMRB Stage 3 Design)
- SuDS
- 150m Study area

**Birds of Conservation Concern (BoCC) Status**

- Red
- Amber
- Green

|      |           |                     |          |        |       |         |
|------|-----------|---------------------|----------|--------|-------|---------|
| 0    | NOV 2017  | ES Publication      | JCr      | LM     | PG    | AJG     |
| Rev. | Rev. Date | Purpose of revision | Orig/Dwn | Checkd | Rev'd | Apprv'd |

**JACOBS**  
 95 Bothwell Street, Glasgow, G2 7HX, UK.  
 Tel: +44(0) 141 243 8000  
 www.jacobs.com

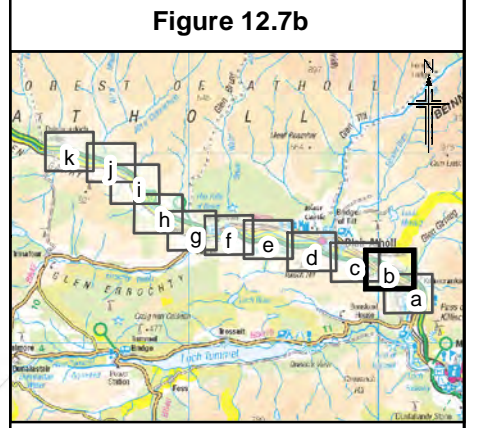
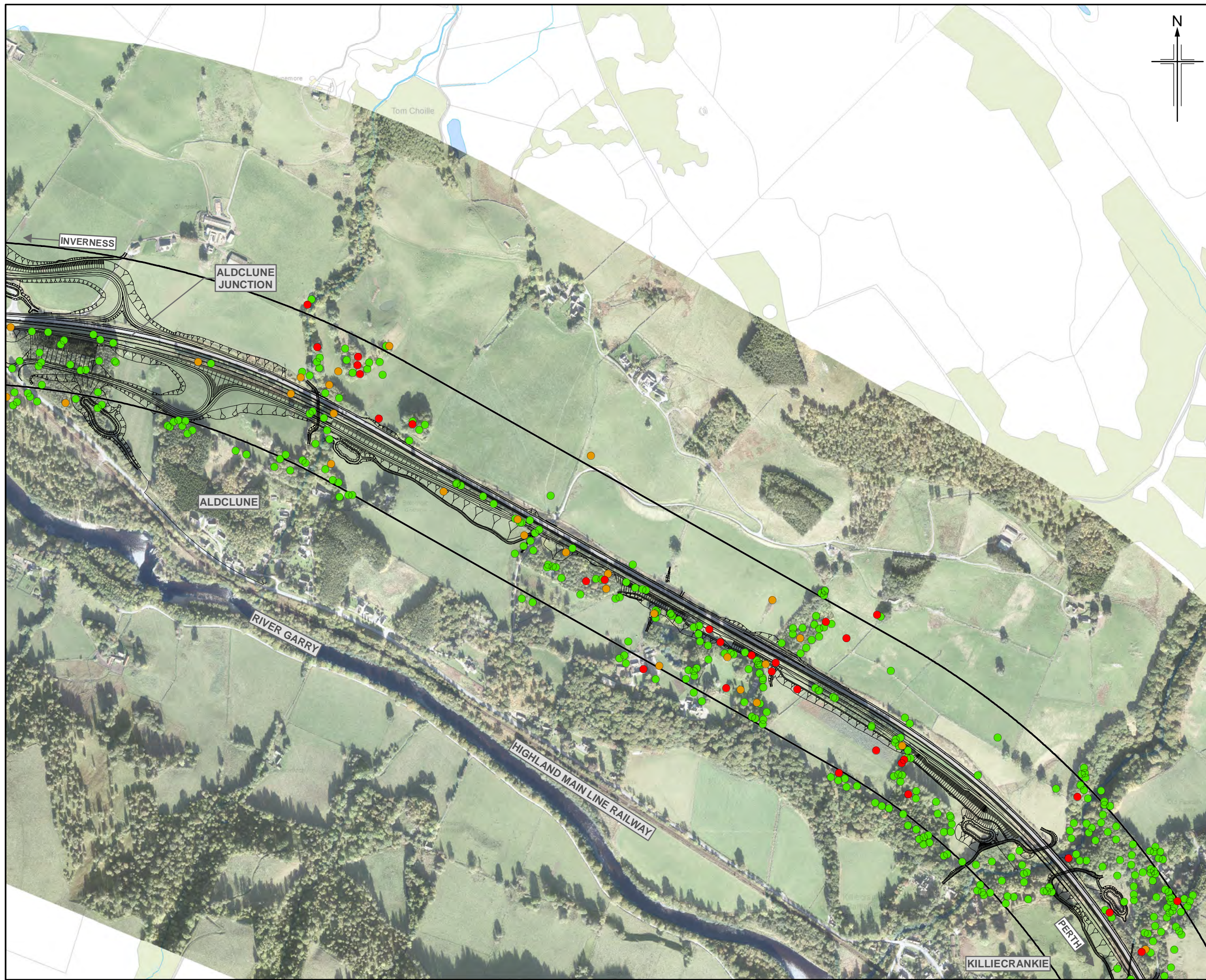
Client  
  
 TRANSPORT SCOTLAND  
 CORRIDOR ALBA

Project  
  
**A9**  
 DUALLING  
 PERTH TO INVERNESS  
 Killiecrankie to Glen Garry

Drawing title  
**Environmental Statement  
 Breeding Birds Survey Results**  
 Sheet 1 of 11

|                |                     |      |              |
|----------------|---------------------|------|--------------|
| Drawing Status | FINAL               |      |              |
| Scale          | 1:7,500             | @ A3 | DO NOT SCALE |
| Jacobs No.     | B2140005            |      |              |
| BIM No.        |                     |      |              |
| Drawing number | <b>Figure 12.7a</b> |      | Rev <b>0</b> |





- Legend**
- Proposed scheme (DMRB Stage 3 Design)
  - SuDS
  - 150m Study area
- Birds of Conservation Concern (BoCC) Status**
- Red
  - Amber
  - Green

|      |           |                     |          |        |       |         |
|------|-----------|---------------------|----------|--------|-------|---------|
| 0    | NOV 2017  | ES Publication      | JCr      | LM     | PG    | AJG     |
| Rev. | Rev. Date | Purpose of revision | Orig/Dwn | Checkd | Rev'd | Apprv'd |

**JACOBS**  
 95 Bothwell Street, Glasgow, G2 7HX, UK.  
 Tel: +44(0) 141 243 8000  
 www.jacobs.com

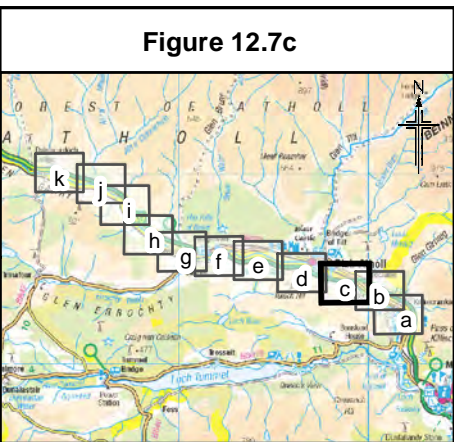
Client  
  
 TRANSPORT SCOTLAND  
 CÒRRAIDH ALBA

Project  
  
**A9**  
 DUALLING  
 PERTH TO INVERNESS  
 Killiecrankie to Glen Garry

Drawing title  
**Environmental Statement  
 Breeding Birds Survey Results**  
 Sheet 2 of 11

|                |                     |      |              |
|----------------|---------------------|------|--------------|
| Drawing Status | FINAL               |      |              |
| Scale          | 1:7,500             | @ A3 | DO NOT SCALE |
| Jacobs No.     | B2140005            |      |              |
| BIM No.        |                     |      |              |
| Drawing number | <b>Figure 12.7b</b> |      | Rev <b>0</b> |





**Legend**

- Proposed scheme (DMRB Stage 3 Design)
- SuDS
- 150m Study area

**Birds of Conservation Concern (BoCC) Status**

- Red
- Amber
- Green

| Rev. | Rev. Date | Purpose of revision | Orig/Dwn | Checkd | Rev'd | Apprv'd |
|------|-----------|---------------------|----------|--------|-------|---------|
| 0    | NOV 2017  | ES Publication      | JCr      | LM     | PG    | AJG     |

**JACOBS**  
 95 Bothwell Street, Glasgow, G2 7HX, UK.  
 Tel: +44(0) 141 243 8000  
 www.jacobs.com

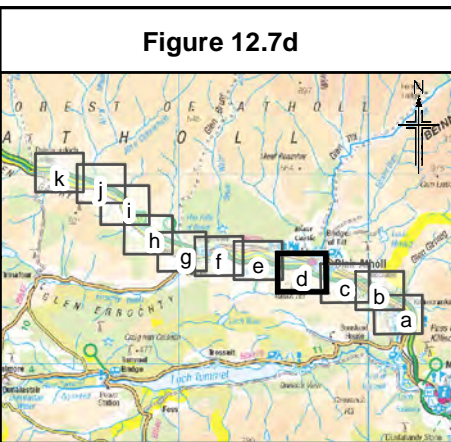
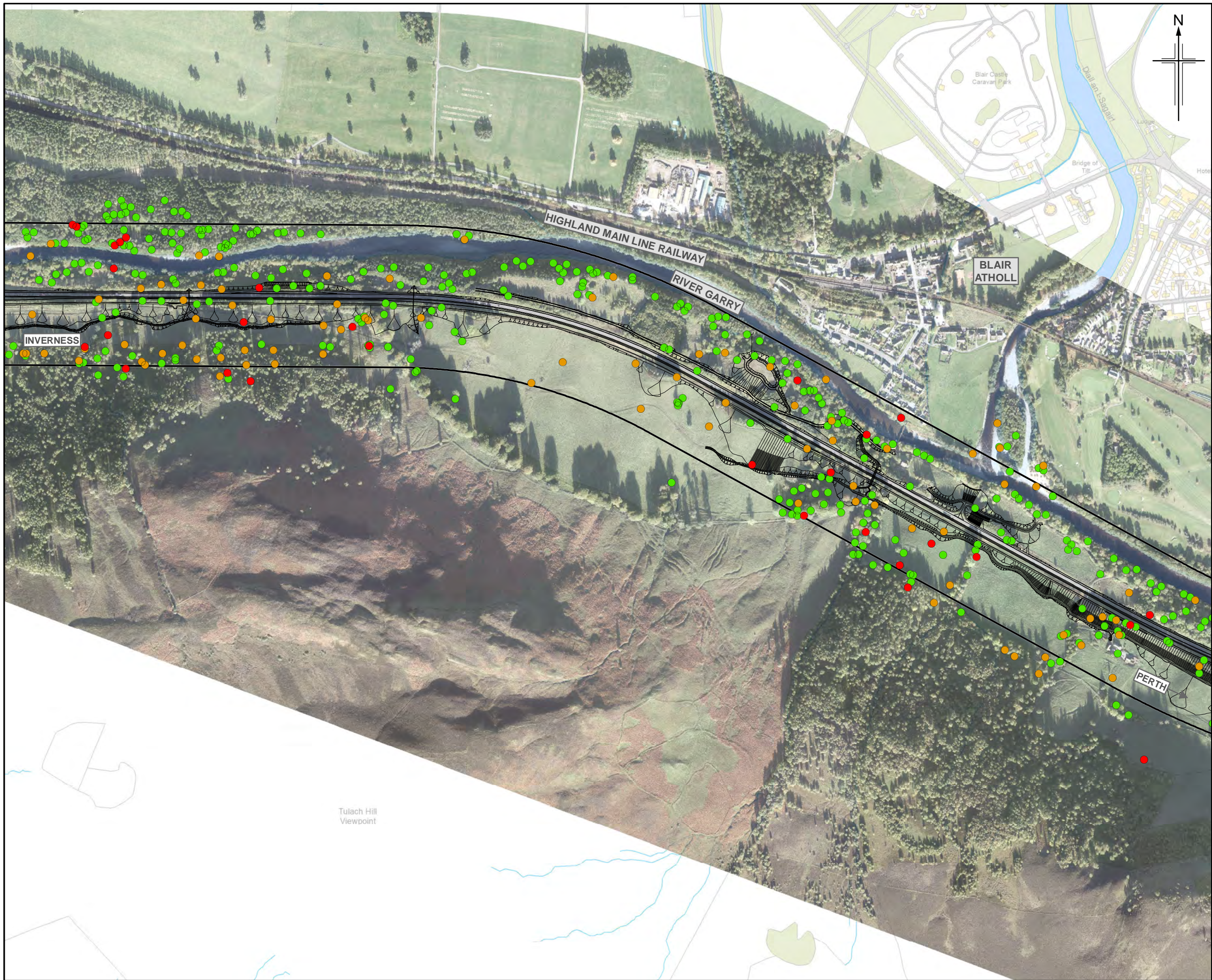
Client  
  
 TRANSPORT SCOTLAND  
 CÒRRAIDH ALBA

Project  
  
**A9**  
 DUALLING  
 PERTH TO INVERNESS  
 Killiecrankie to Glen Garry

Drawing title  
**Environmental Statement  
 Breeding Birds Survey Results**  
 Sheet 3 of 11

|                |              |      |              |
|----------------|--------------|------|--------------|
| Drawing Status | FINAL        |      |              |
| Scale          | 1:7,500      | @ A3 | DO NOT SCALE |
| Jacobs No.     | B2140005     |      |              |
| BIM No.        |              |      |              |
| Drawing number | Figure 12.7c |      | Rev 0        |





**Figure 12.7d**

**Legend**

- Proposed scheme (DMRB Stage 3 Design)
- SuDS
- 150m Study area

**Birds of Conservation Concern (BoCC) Status**

- Red
- Amber
- Green

|      |           |                     |          |        |       |        |
|------|-----------|---------------------|----------|--------|-------|--------|
| 0    | NOV 2017  | ES Publication      | JCr      | LM     | PG    | AJG    |
| Rev. | Rev. Date | Purpose of revision | Orig/Dwn | Checkd | Rev'd | Appr'd |

**JACOBS**  
 95 Bothwell Street, Glasgow, G2 7HX, UK.  
 Tel: +44(0) 141 243 8000  
 www.jacobs.com

Client  
  
 TRANSPORT SCOTLAND  
 CÒRRAIDH ALBA

Project  
  
**A9**  
 DUALLING  
 PERTH TO INVERNESS  
 Killiecrankie to Glen Garry

Drawing title  
**Environmental Statement**  
**Breeding Birds Survey Results**  
 Sheet 4 of 11

|                |                     |      |              |
|----------------|---------------------|------|--------------|
| Drawing Status | FINAL               |      |              |
| Scale          | 1:7,500             | @ A3 | DO NOT SCALE |
| Jacobs No.     | B2140005            |      |              |
| BIM No.        |                     |      |              |
| Drawing number | <b>Figure 12.7d</b> |      | Rev <b>0</b> |

This drawing is not to be used in whole or part other than for the intended purpose and project as defined on this drawing. Refer to the contract for full terms and conditions.



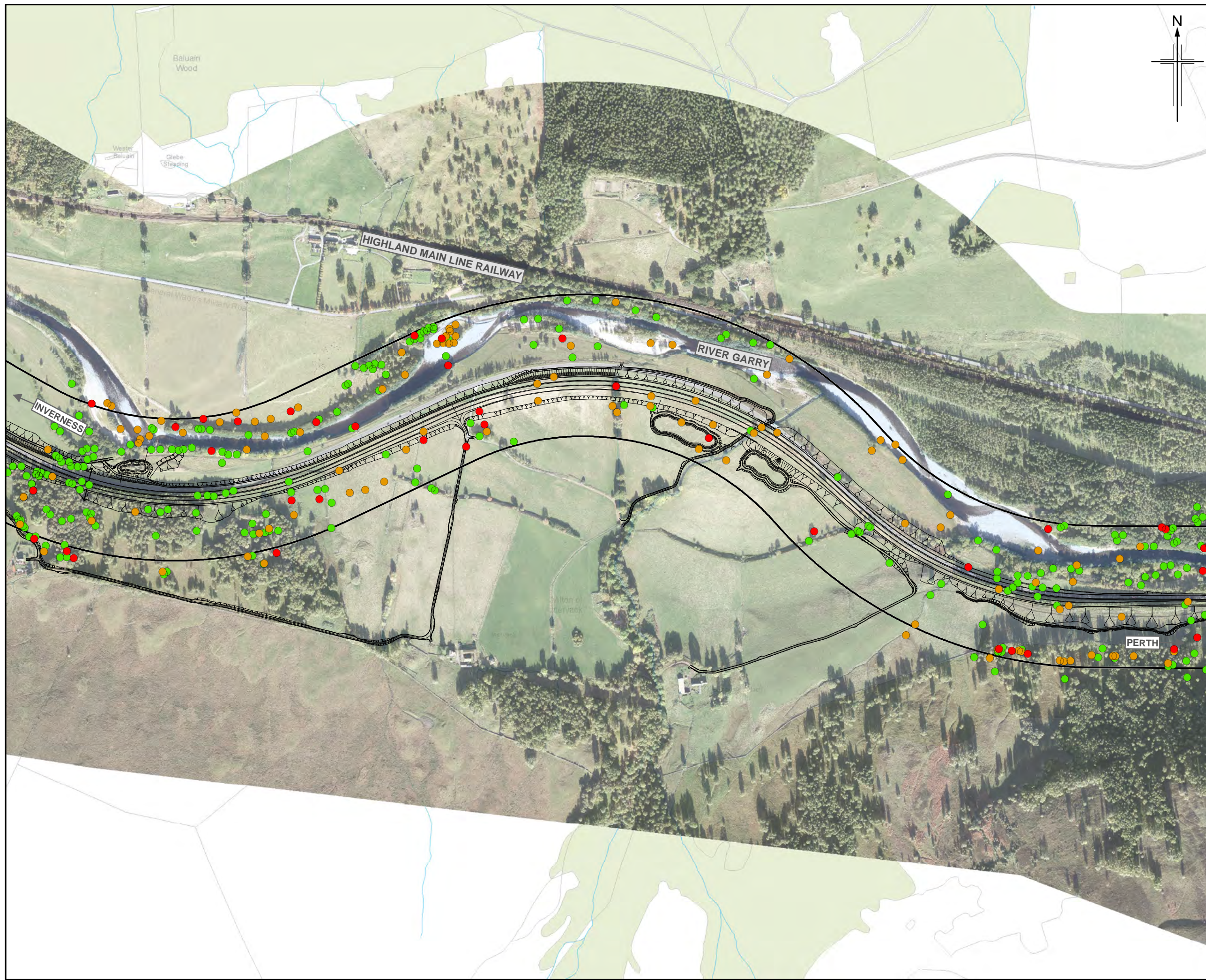
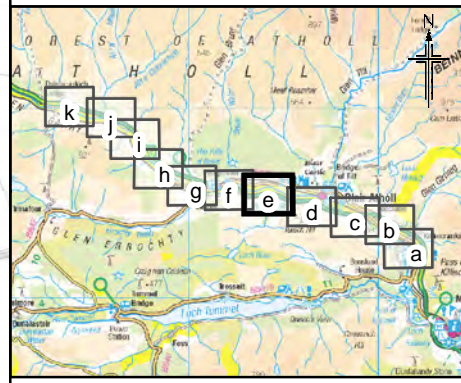


Figure 12.7e



- Legend**
- Proposed scheme (DMRB Stage 3 Design)
  - SuDS
  - 150m Study area
- Birds of Conservation Concern (BoCC) Status**
- Red
  - Amber
  - Green

| Rev. | Rev. Date | Purpose of revision | Orig/Dwn | Check'd | Rev'd | Appr'd |
|------|-----------|---------------------|----------|---------|-------|--------|
| 0    | NOV 2017  | ES Publication      | JCr      | LM      | PG    | AJG    |

**JACOBS**  
 95 Bothwell Street, Glasgow, G2 7HX, UK.  
 Tel: +44(0) 141 243 8000  
 www.jacobs.com



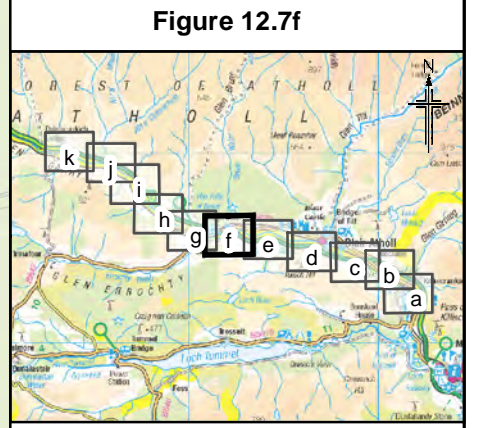
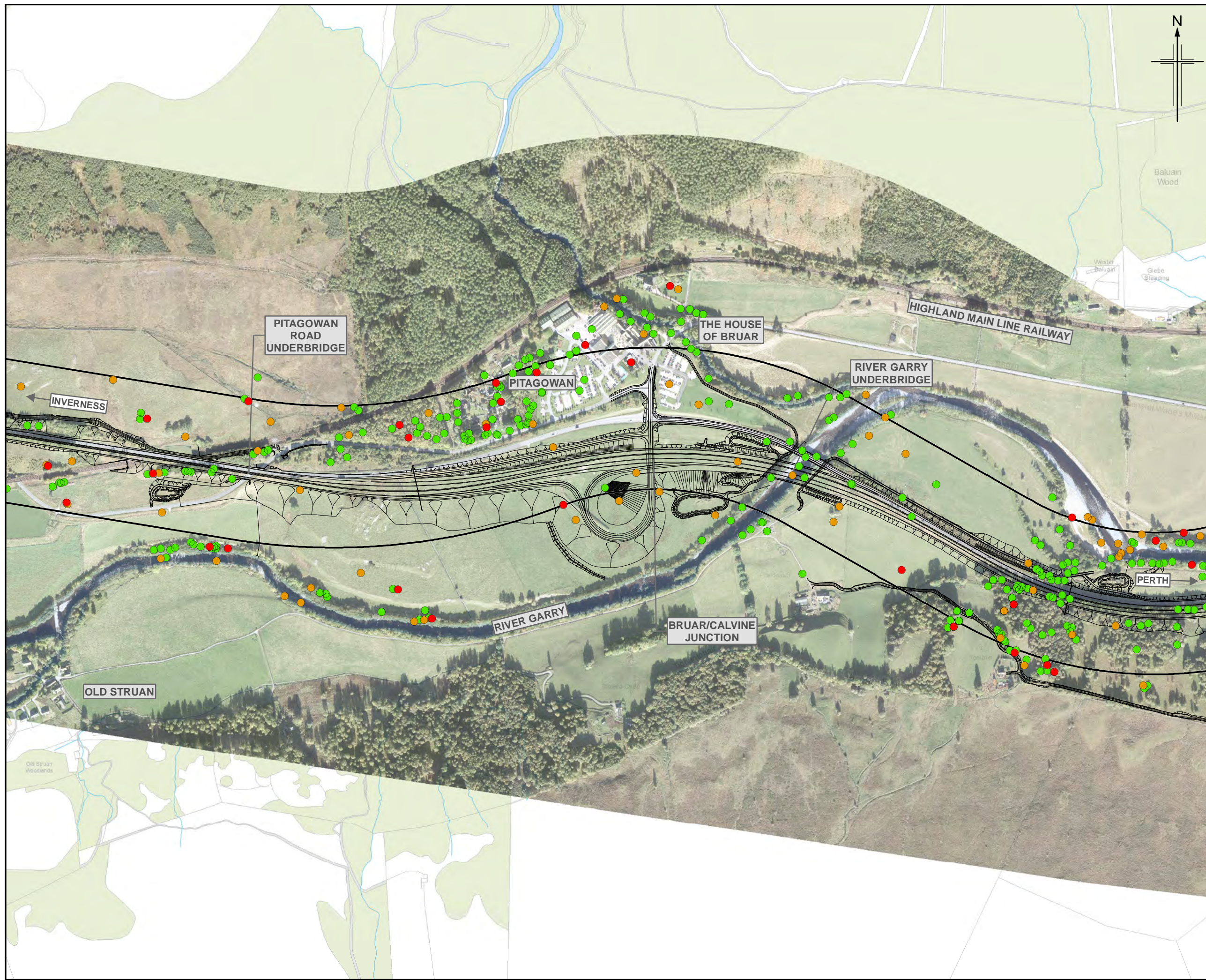
Drawing title

**Environmental Statement  
Breeding Birds Survey Results**

Sheet 5 of 11

|                |                     |      |              |
|----------------|---------------------|------|--------------|
| Drawing Status | FINAL               |      |              |
| Scale          | 1:7,500             | @ A3 | DO NOT SCALE |
| Jacobs No.     | B2140005            |      |              |
| BIM No.        |                     |      |              |
| Drawing number | <b>Figure 12.7e</b> |      | Rev <b>0</b> |





**Legend**

- Proposed scheme (DMRB Stage 3 Design)
- SuDS
- 150m Study area

**Birds of Conservation Concern (BoCC) Status**

- Red
- Amber
- Green

| Rev. | Rev. Date | Purpose of revision | Orig/Dwn | Check'd | Rev'd | Appr'd |
|------|-----------|---------------------|----------|---------|-------|--------|
| 0    | NOV 2017  | ES Publication      | JCr      | LM      | PG    | AJG    |

**JACOBS**  
 95 Bothwell Street, Glasgow, G2 7HX, UK.  
 Tel: +44(0) 141 243 8000  
 www.jacobs.com

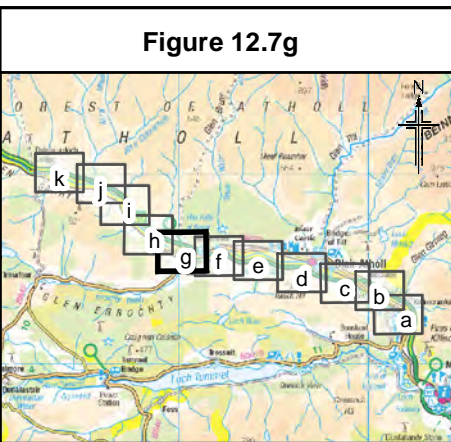
Client  
  
 TRANSPORT SCOTLAND  
 CORPHISAL ALBA

Project  
  
**A9 DUALLING**  
 PERTH TO INVERNESS  
 Killiecrankie to Glen Garry

Drawing title  
**Environmental Statement  
 Breeding Birds Survey Results**  
 Sheet 6 of 11

|                |                     |      |              |
|----------------|---------------------|------|--------------|
| Drawing Status | FINAL               |      |              |
| Scale          | 1:7,500             | @ A3 | DO NOT SCALE |
| Jacobs No.     | B2140005            |      |              |
| BIM No.        |                     |      |              |
| Drawing number | <b>Figure 12.7f</b> |      | Rev <b>0</b> |





**Figure 12.7g**

**Legend**

- Proposed scheme (DMRB Stage 3 Design)
- SuDS
- 150m Study area

**Birds of Conservation Concern (BoCC) Status**

- Red
- Amber
- Green

|      |           |                     |          |         |       |         |
|------|-----------|---------------------|----------|---------|-------|---------|
| 0    | NOV 2017  | ES Publication      | JCr      | LM      | PG    | AJG     |
| Rev. | Rev. Date | Purpose of revision | Orig/Dwn | Check'd | Rev'd | Apprv'd |

**JACOBS**  
 95 Bothwell Street, Glasgow, G2 7HX, UK.  
 Tel: +44(0) 141 243 8000  
 www.jacobs.com



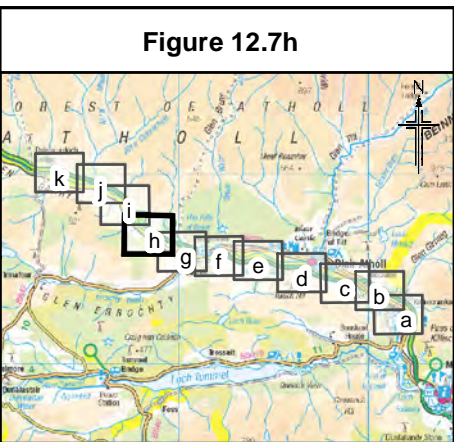
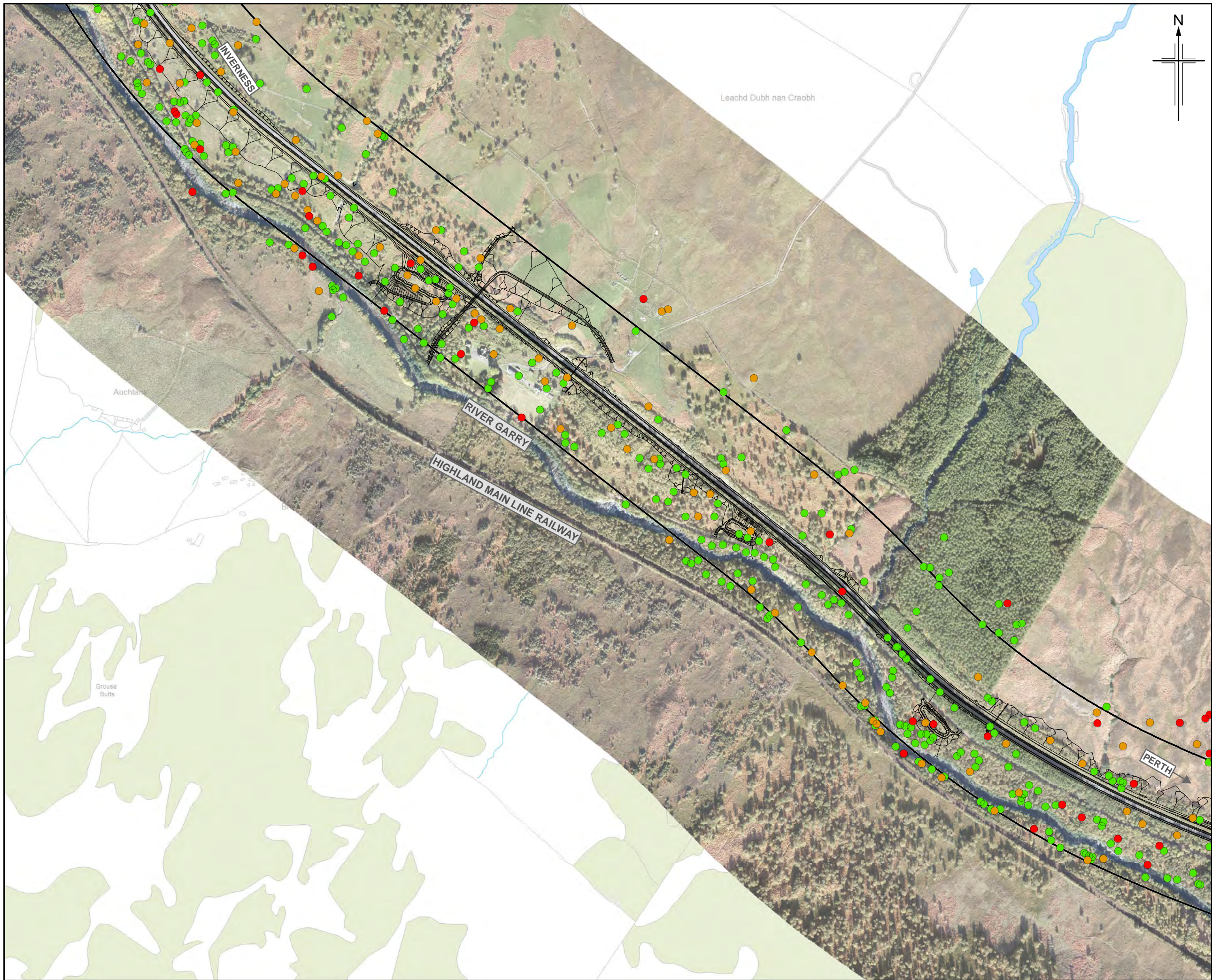
Drawing title

**Environmental Statement  
 Breeding Birds Survey Results**

**Sheet 7 of 11**

|                |                     |      |                 |
|----------------|---------------------|------|-----------------|
| Drawing Status | FINAL               |      |                 |
| Scale          | 1:7,500             | @ A3 | DO NOT SCALE    |
| Jacobs No.     | B2140005            |      |                 |
| BIM No.        |                     |      |                 |
| Drawing number | <b>Figure 12.7g</b> |      | Rev<br><b>0</b> |





- Legend**
- Proposed scheme (DMRB Stage 3 Design)
  - SuDS
  - 150m Study area
- Birds of Conservation Concern (BoCC) Status**
- Red
  - Amber
  - Green

|      |           |                     |          |        |       |         |
|------|-----------|---------------------|----------|--------|-------|---------|
| 0    | NOV 2017  | ES Publication      | JCr      | LM     | PG    | AJG     |
| Rev. | Rev. Date | Purpose of revision | Orig/Dwn | Checkd | Rev'd | Apprv'd |

**JACOBS**  
 95 Bothwell Street, Glasgow, G2 7HX, UK.  
 Tel: +44(0) 141 243 8000  
 www.jacobs.com

Client  
  
 TRANSPORT SCOTLAND  
 CÙRRAIDH ALBA

Project  
  
**A9 DUALLING**  
 PERTH TO INVERNESS  
 Killiecrankie to Glen Garry

Drawing title  
**Environmental Statement**  
**Breeding Birds Survey Results**  
 Sheet 8 of 11

|                |              |      |              |
|----------------|--------------|------|--------------|
| Drawing Status | FINAL        |      |              |
| Scale          | 1:7,500      | @ A3 | DO NOT SCALE |
| Jacobs No.     | B2140005     |      |              |
| BIM No.        |              |      |              |
| Drawing number | Figure 12.7h |      | Rev 0        |



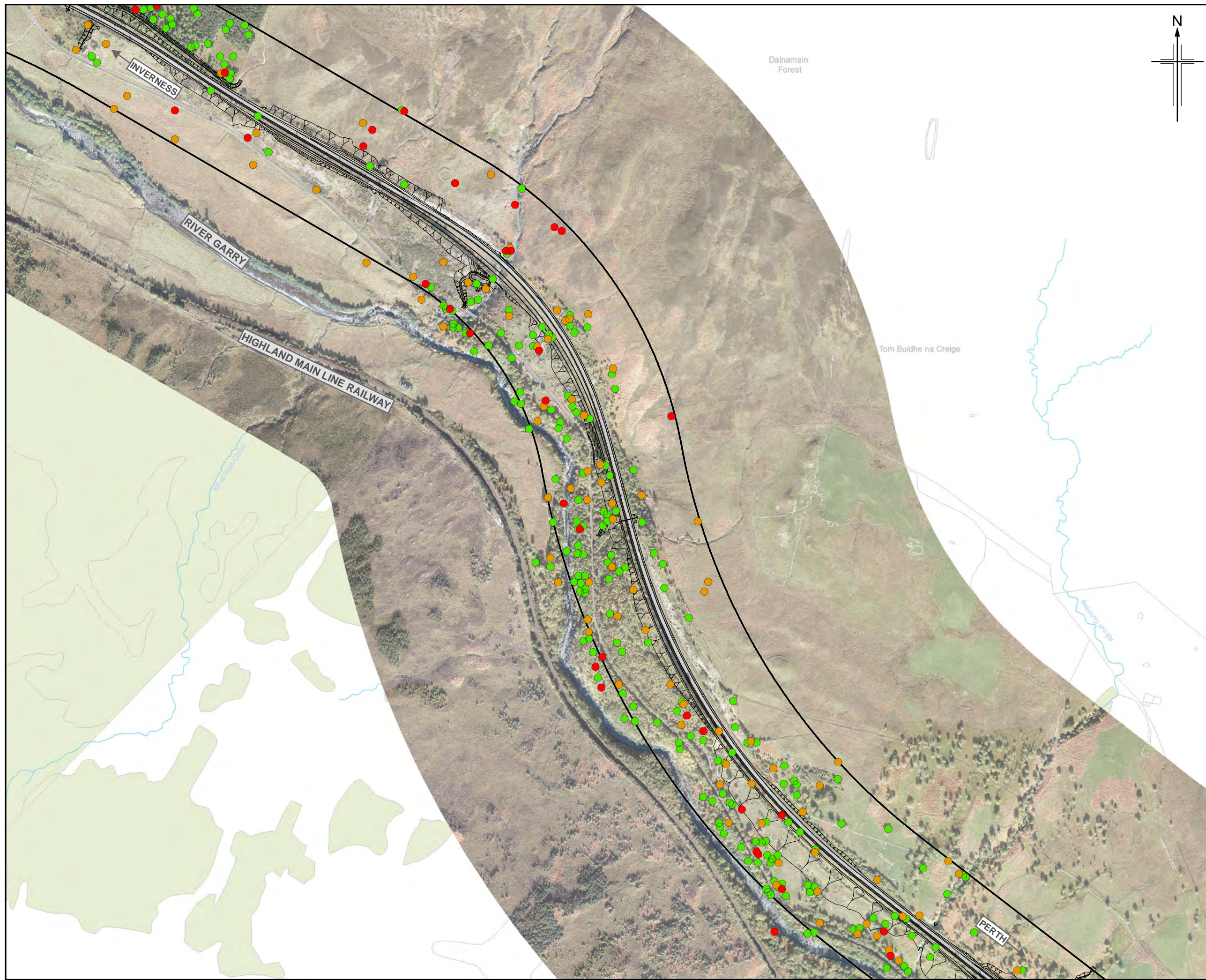
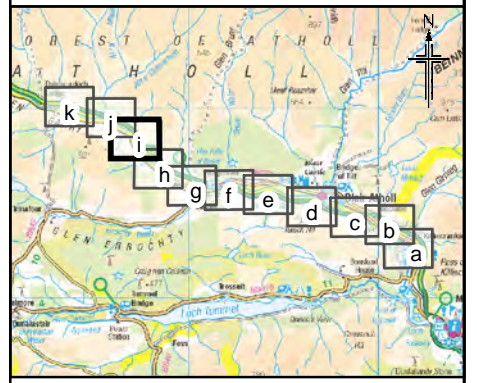


Figure 12.7i



**Legend**

- Proposed scheme (DMRB Stage 3 Design)
- SuDS
- 150m Study area

**Birds of Conservation Concern (BoCC) Status**

- Red
- Amber
- Green

| 0    | NOV 2017  | ES Publication      | JCr      | LM      | PG    | AJG     |
|------|-----------|---------------------|----------|---------|-------|---------|
| Rev. | Rev. Date | Purpose of revision | Orig/Dwn | Check'd | Rev'd | Apprv'd |



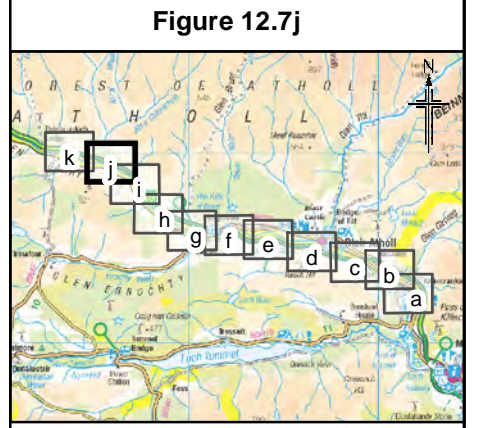
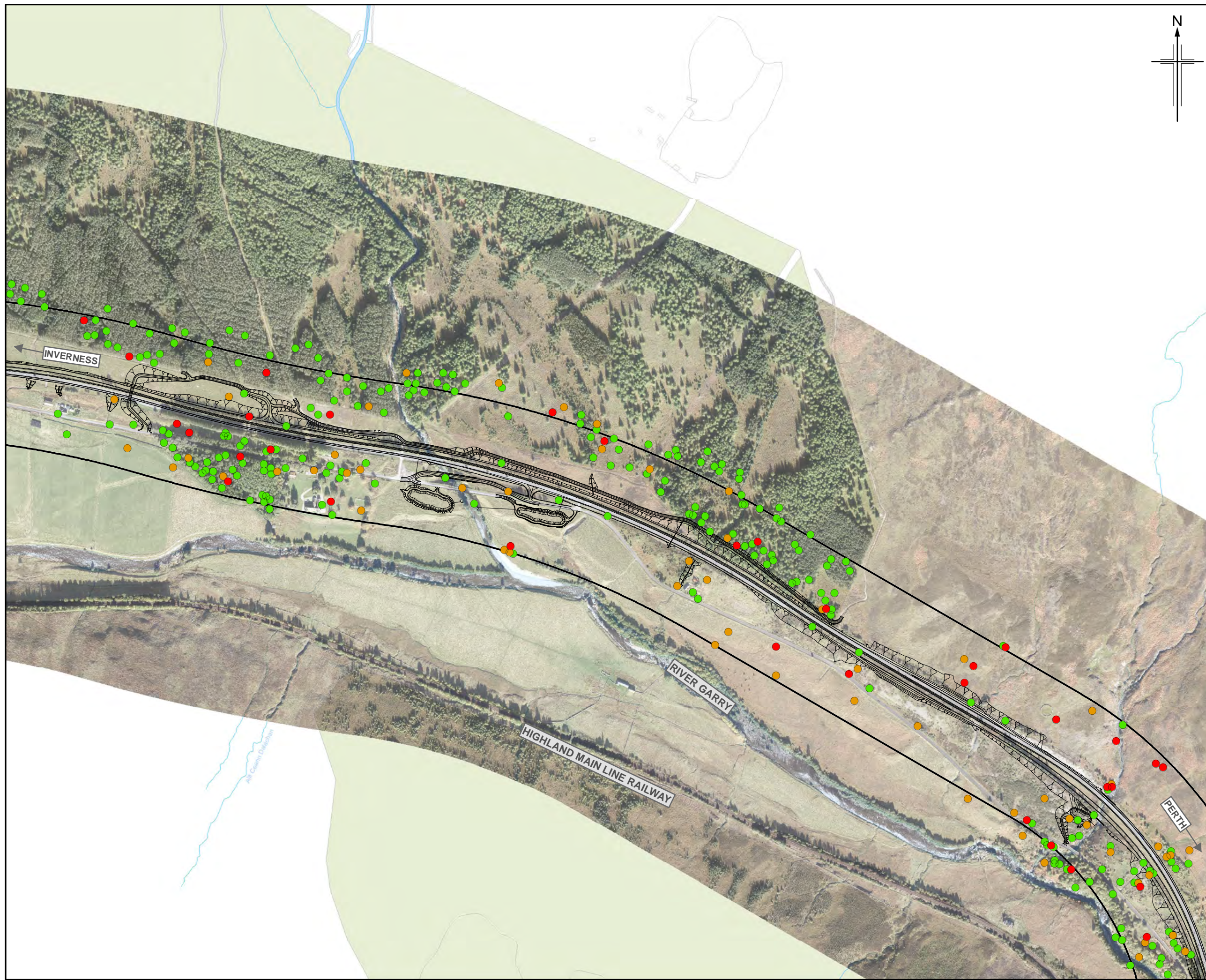
Client  
 TRANSPORT SCOTLAND  
 CDPHSHAL ALBA

Project  
 A9 DUALLING  
 PERTH TO INVERNESS  
 Killiecrankie to Glen Garry

Drawing title  
**Environmental Statement  
 Breeding Birds Survey Results**  
 Sheet 9 of 11

|                |              |      |              |
|----------------|--------------|------|--------------|
| Drawing Status | FINAL        |      |              |
| Scale          | 1:7,500      | @ A3 | DO NOT SCALE |
| JACOBS No.     | B2140005     |      |              |
| BIM No.        |              |      |              |
| Drawing number | Figure 12.7i |      | Rev 0        |





**Legend**

- Proposed scheme (DMRB Stage 3 Design)
- SuDS
- 150m Study area

**Birds of Conservation Concern (BoCC) Status**

- Red
- Amber
- Green

| Rev. | Rev. Date | Purpose of revision | Orig/Dwn | Check'd | Rev'd | Appr'd |
|------|-----------|---------------------|----------|---------|-------|--------|
| 0    | NOV 2017  | ES Publication      | JCr      | LM      | PG    | AJG    |

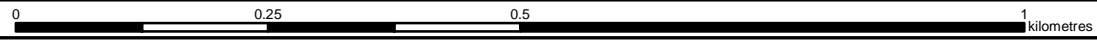
**JACOBS**  
 95 Bothwell Street, Glasgow, G2 7HX, UK.  
 Tel: +44(0) 141 243 8000  
 www.jacobs.com

Client  
  
 TRANSPORT SCOTLAND  
 CÒRRAIDH ALBA

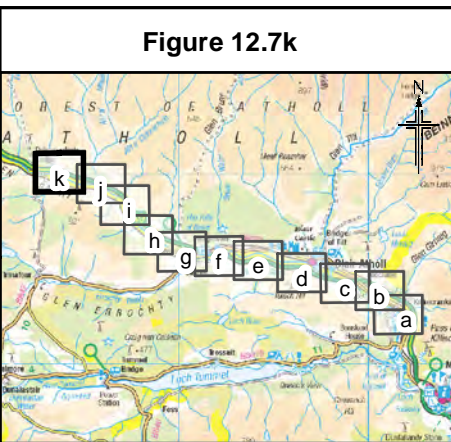
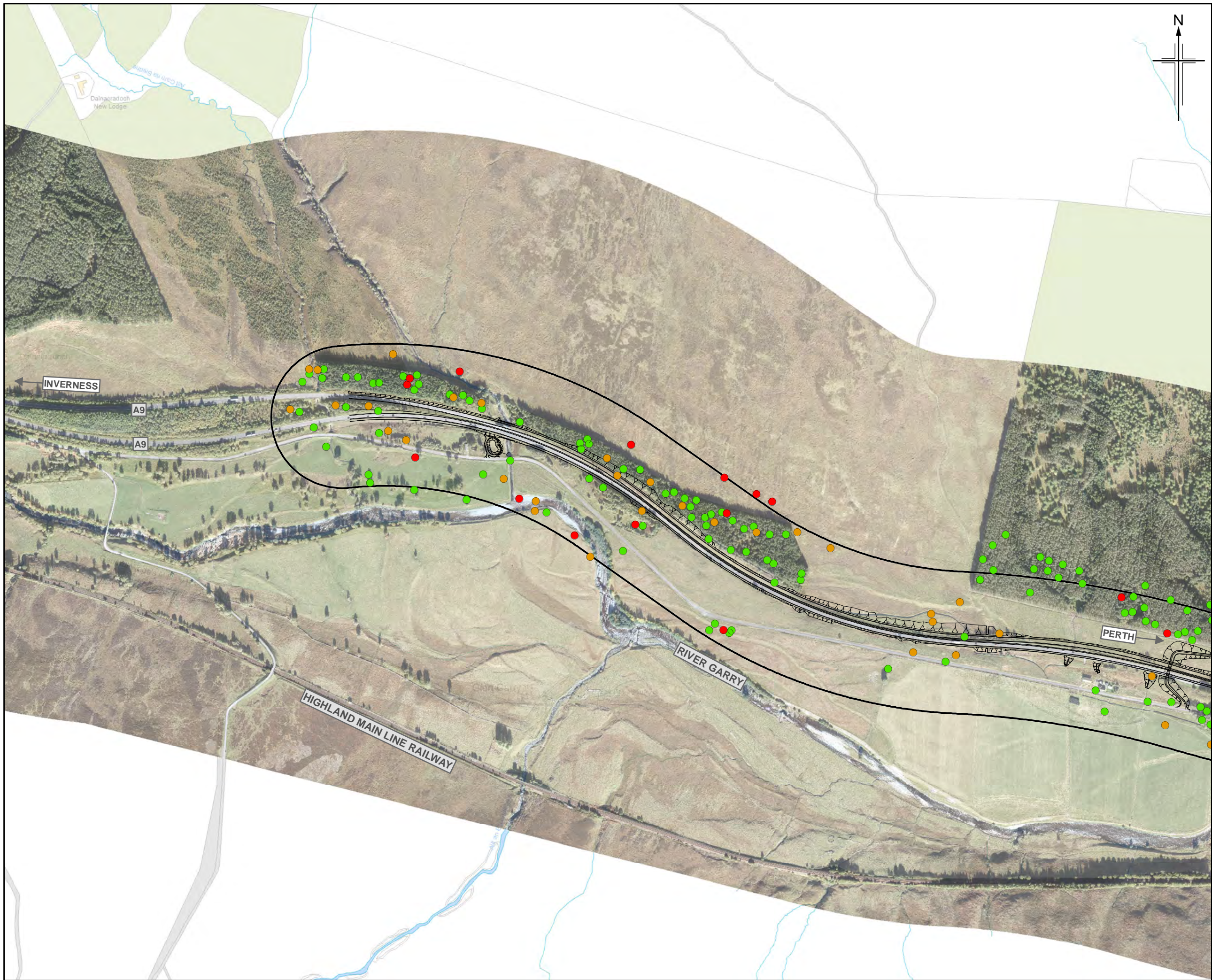
Project  
  
**A9 DUALLING**  
 PERTH TO INVERNESS  
 Killiecrankie to Glen Garry

Drawing title  
**Environmental Statement**  
**Breeding Birds Survey Results**  
 Sheet 10 of 11

|                |              |      |              |
|----------------|--------------|------|--------------|
| Drawing Status | FINAL        |      |              |
| Scale          | 1:7,500      | @ A3 | DO NOT SCALE |
| Jacobs No.     | B2140005     |      |              |
| BIM No.        |              |      |              |
| Drawing number | Figure 12.7j |      | Rev 0        |







- Legend**
- Proposed scheme (DMRB Stage 3 Design)
  - SuDS
  - 150m Study area
- Birds of Conservation Concern (BoCC) Status**
- Red
  - Amber
  - Green

|      |           |                     |          |         |       |         |
|------|-----------|---------------------|----------|---------|-------|---------|
| 0    | NOV 2017  | ES Publication      | JCr      | LM      | PG    | AJG     |
| Rev. | Rev. Date | Purpose of revision | Orig/Dwn | Checked | Rev'd | Apprv'd |

**JACOBS**  
 95 Bothwell Street, Glasgow, G2 7HX, UK.  
 Tel: +44(0) 141 243 8000  
 www.jacobs.com

Client  
  
 TRANSPORT SCOTLAND  
 CORPHORAL ALBA

Project  
  
**A9**  
 DUALLING  
 PERTH TO INVERNESS  
 Killiecrankie to Glen Garry

Drawing title  
**Environmental Statement  
 Breeding Birds Survey Results**  
 Sheet 11 of 11

|                |                     |      |              |
|----------------|---------------------|------|--------------|
| Drawing Status | FINAL               |      |              |
| Scale          | 1:7,500             | @ A3 | DO NOT SCALE |
| Jacobs No.     | B2140005            |      |              |
| BIM No.        |                     |      |              |
| Drawing number | <b>Figure 12.7k</b> |      | Rev <b>0</b> |