

- Legend**
- Proposed scheme (DMRB Stage 3 Design)
  - SuDS
  - Land Made Available (LMA)
  - Verified AWI (wooded)
  - Lost AWI (unwooded)
  - AWI mitigation area

Deciduous woodland planted prior to construction where practicable to replace the functions in habitat connectivity and carrying capacity of lost AWI woodland

Deciduous woodland planted prior to construction where practicable to replace the functions in habitat connectivity and carrying capacity of lost AWI woodland

Deciduous woodland (e.g. oak, birch, rowan and hazel) planted prior to construction where practicable to replace the functions in habitat connectivity and carrying capacity of lost AWI woodland

0	NOV 2017	ES Publication	EM	SC	PG	AJG
Rev.	Rev. Date	Purpose of revision	Orig/Dwn	Checkd	Rev'd	Apprv'd

**JACOBS**  
95 Bothwell Street, Glasgow, G2 7HX, UK.  
Tel: +44(0) 141 243 8000  
www.jacobs.com

Client  
**TRANSPORT SCOTLAND**  
CORPORAL ALBA

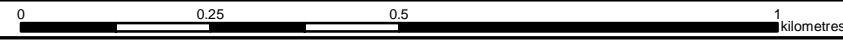
Project  
**A9 DUALLING**  
PERTH TO INVERNESS  
Killiecrankie to Glen Garry

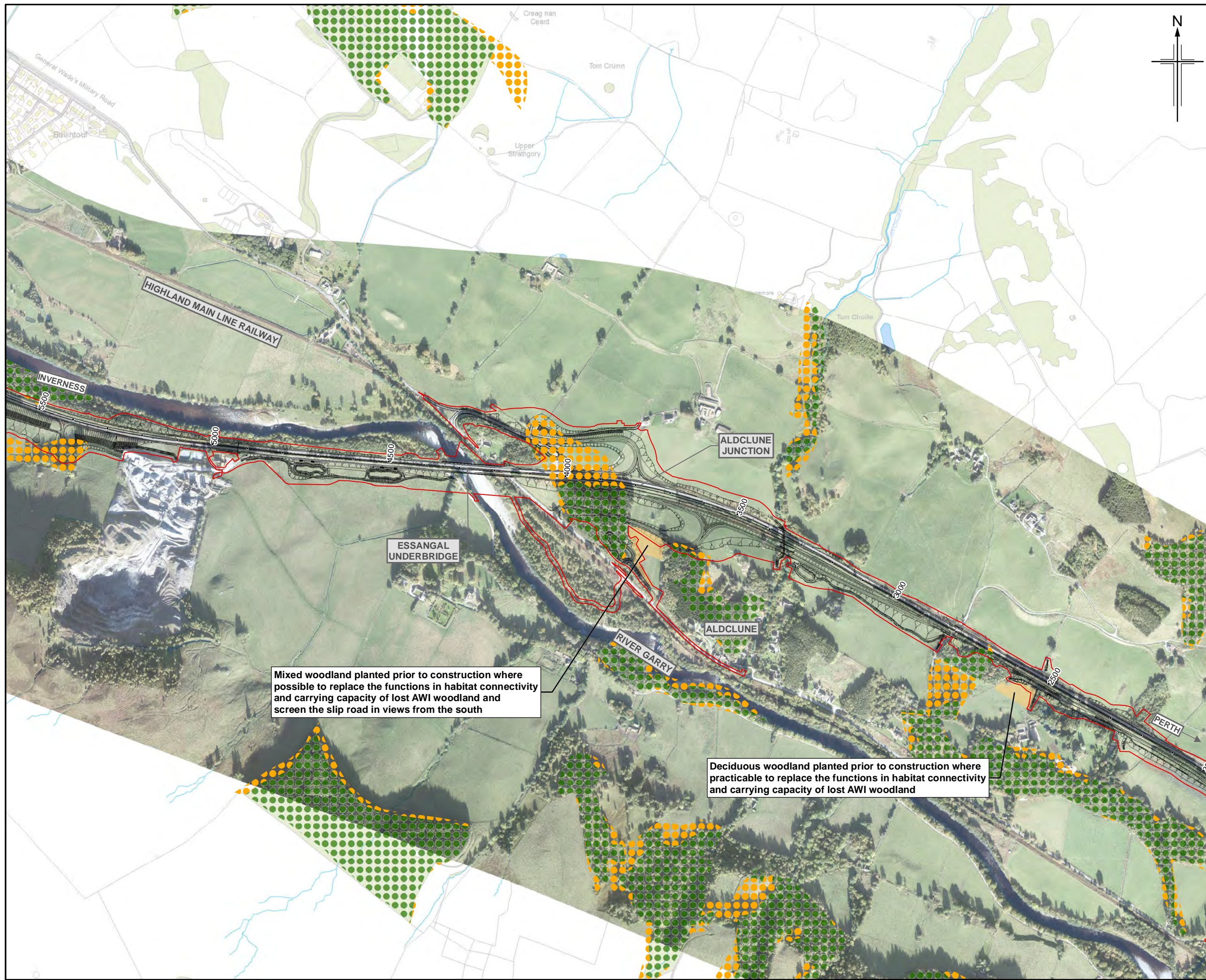
Drawing title  
**Environmental Statement  
Ancient Woodland Inventory (AWI)  
Loss and Compensation**

Sheet 1 of 8

Drawing Status	FINAL
Scale	1:10,000 @ A3 DO NOT SCALE
Jacobs No.	B2140005
BIM No.	
Drawing number	Figure 12.14a
Rev	0

This drawing is not to be used in whole or part other than for the intended purpose and project as defined on this drawing. Refer to the contract for full terms and conditions.

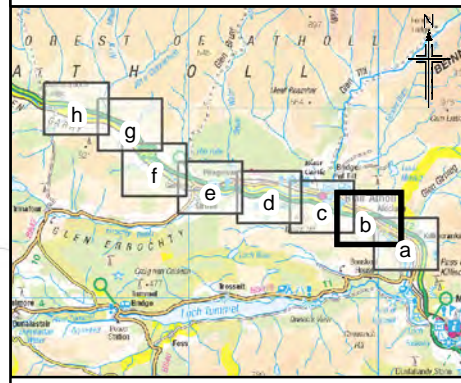




Mixed woodland planted prior to construction where possible to replace the functions in habitat connectivity and carrying capacity of lost AWI woodland and screen the slip road in views from the south

Deciduous woodland planted prior to construction where practicable to replace the functions in habitat connectivity and carrying capacity of lost AWI woodland

Figure 12.14b



- Legend**
- Proposed scheme (DMRB Stage 3 Design)
  - SuDS
  - Land Made Available (LMA)
  - Verified AWI (wooded)
  - Lost AWI (unwooded)
  - AWI mitigation area

0	NOV 2017	ES Publication	EM	SC	PG	AJG
Rev.	Rev. Date	Purpose of revision	Orig/Dwn	Checkd	Rev'd	Apprv'd

**JACOBS**  
95 Bothwell Street, Glasgow, G2 7HX, UK  
Tel: +44(0) 141 243 8000  
www.jacobs.com

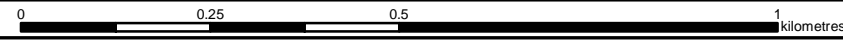
Client  
**TRANSPORT SCOTLAND**  
CORRIDOR ALBA

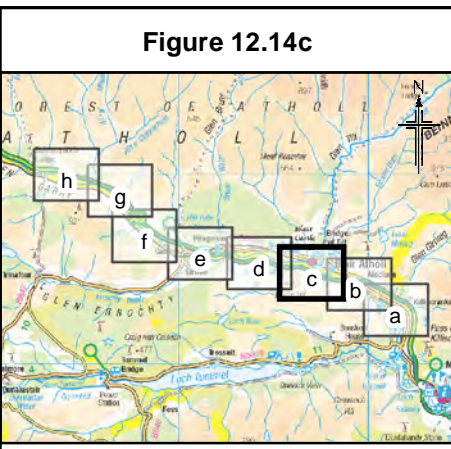
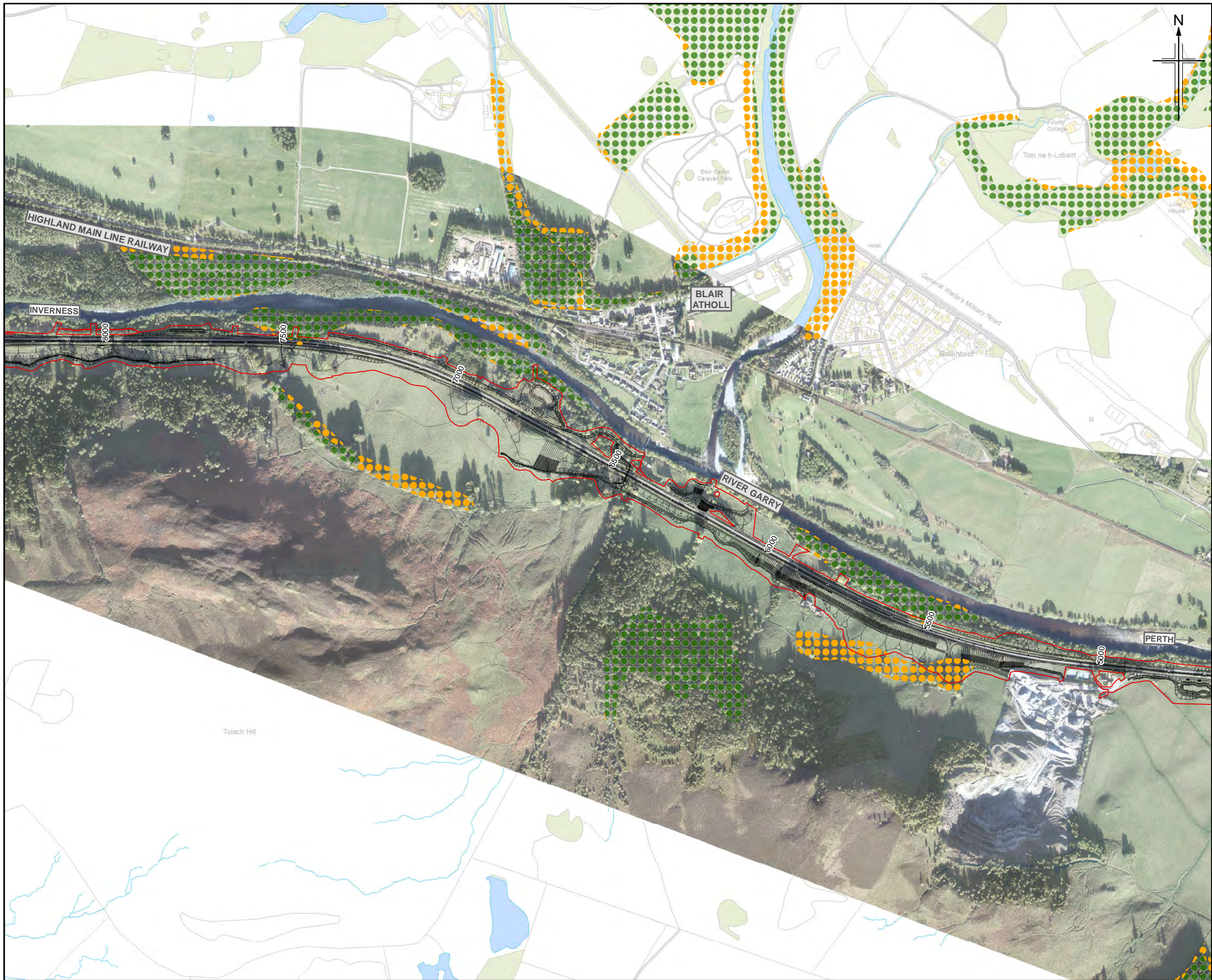
Project  
**A9 DUALLING**  
PERTH TO INVERNESS  
Killiecrankie to Glen Garry

Drawing title  
**Environmental Statement  
Ancient Woodland Inventory (AWI)  
Loss and Compensation**

Drawing Status	FINAL		
Scale	1:10,000	@ A3	DO NOT SCALE
Jacobs No.	B2140005		
BIM No.			
Drawing number	Figure 12.14b		Rev 0

This drawing is not to be used in whole or part other than for the intended purpose and project as defined on this drawing. Refer to the contract for full terms and conditions.





- Legend**
- Proposed scheme (DMRB Stage 3 Design)
  - SuDS
  - Land Made Available (LMA)
  - Verified AWI (wooded)
  - Lost AWI (unwooded)
  - AWI mitigation area

0	NOV 2017	ES Publication	EM	SC	PG	AJG
Rev.	Rev. Date	Purpose of revision	Orig/Dwn	Checkd	Rev'd	Appr'd

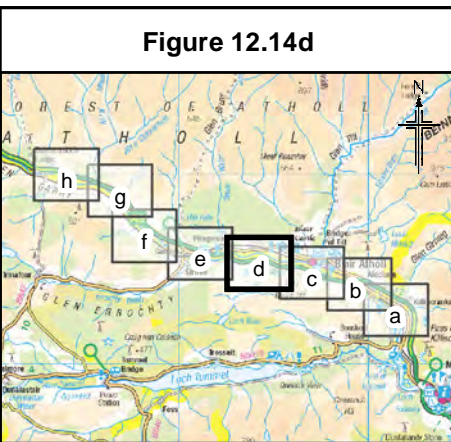
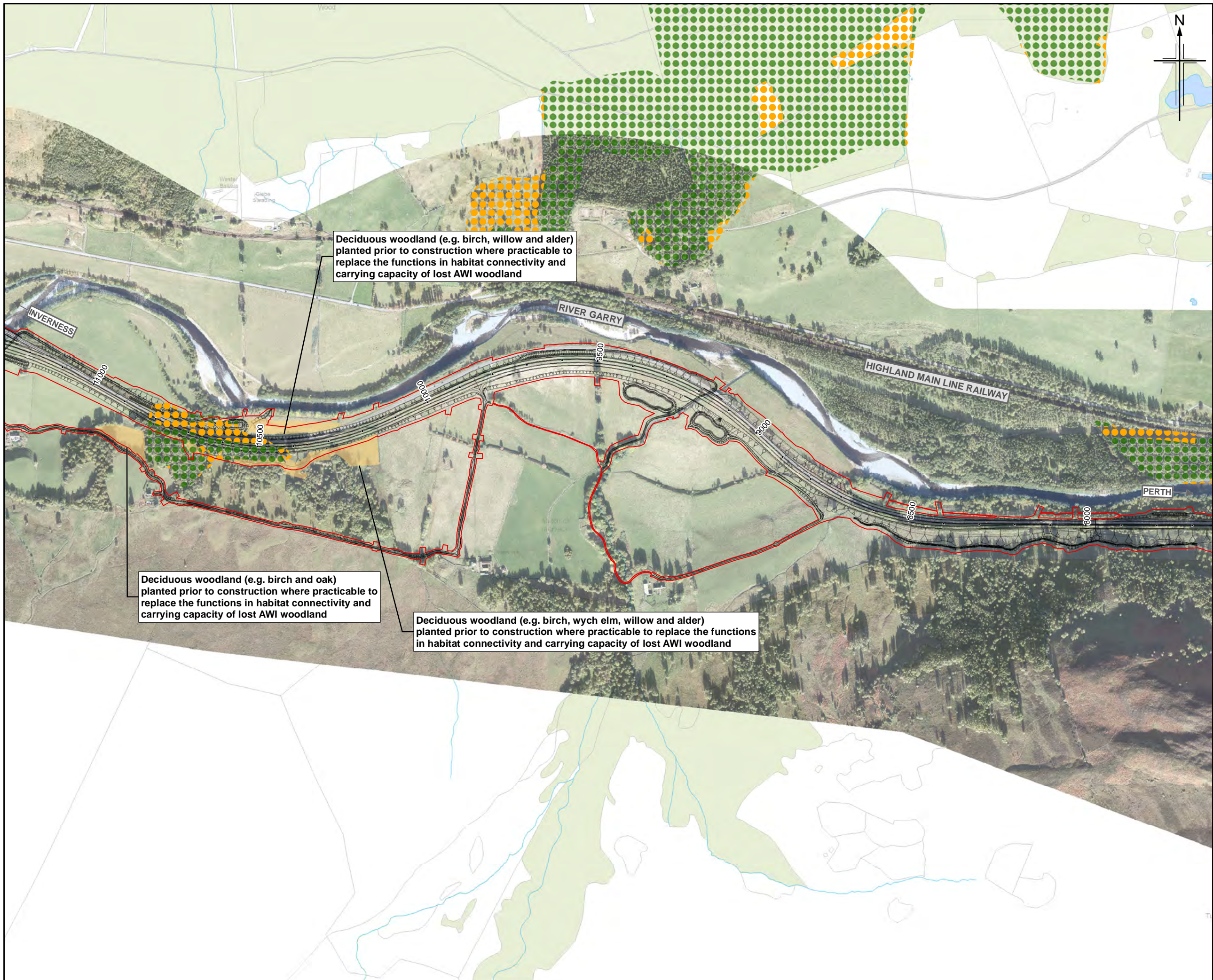
**JACOBS**  
 95 Bothwell Street, Glasgow, G2 7HX, UK.  
 Tel: +44(0) 141 243 8000  
 www.jacobs.com

Client  
  
 TRANSPORT SCOTLAND  
 CORRIDOR ALBA

Project  
  
**A9**  
 DUALLING  
 PERTH TO INVERNESS  
 Killiecrankie to Glen Garry

Drawing title  
**Environmental Statement  
 Ancient Woodland Inventory (AWI)  
 Loss and Compensation**

Drawing Status	FINAL		
Scale	1:10,000	@ A3	DO NOT SCALE
Jacobs No.	B2140005		
BIM No.			
Drawing number	Figure 12.14c		Rev 0



- Legend**
- Proposed scheme (DMRB Stage 3 Design)
  - SuDS
  - Land Made Available (LMA)
  - Verified AWI (wooded)
  - Lost AWI (unwooded)
  - AWI mitigation area

0	NOV 2017	ES Publication	EM	SC	PG	AJG
Rev.	Rev. Date	Purpose of revision	Orig/Dwn	Checkd	Rev'd	Apprv'd

**JACOBS**  
 95 Bothwell Street, Glasgow, G2 7HX, UK.  
 Tel: +44(0) 141 243 8000  
 www.jacobs.com

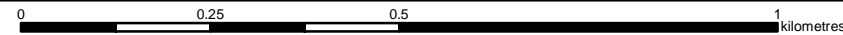
Client  
  
 TRANSPORT SCOTLAND  
 CORRIDOR ALBA

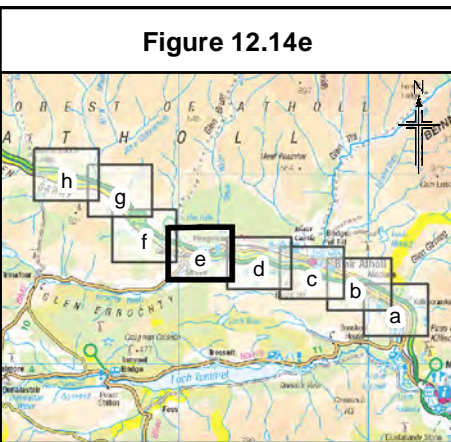
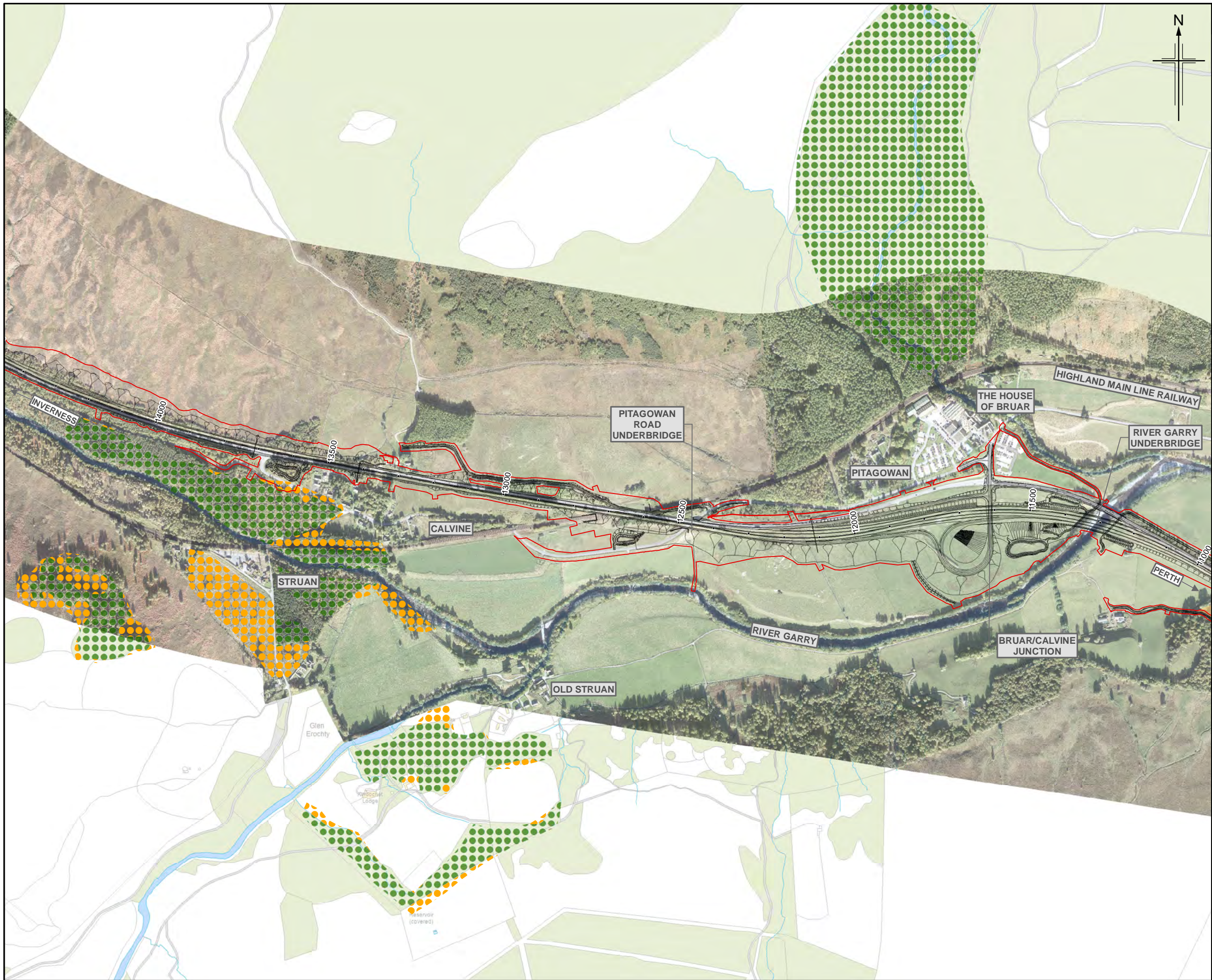
Project  
  
**A9**  
 DUALLING  
 PERTH TO INVERNESS  
 Killiecrankie to Glen Garry

Drawing title  
**Environmental Statement  
 Ancient Woodland Inventory (AWI)  
 Loss and Compensation**  
 Sheet 4 of 8

Drawing Status	FINAL		
Scale	1:10,000	@ A3	DO NOT SCALE
Jacobs No.	B2140005		
BIM No.			
Drawing number	<b>Figure 12.14d</b>		Rev <b>0</b>

This drawing is not to be used in whole or part other than for the intended purpose and project as defined on this drawing. Refer to the contract for full terms and conditions.





- Legend**
- Proposed scheme (DMRB Stage 3 Design)
  - SuDS
  - Land Made Available (LMA)
  - Verified AWI (wooded)
  - Lost AWI (unwooded)
  - AWI mitigation area

0	NOV 2017	ES Publication	EM	SC	PG	AJG
Rev.	Rev. Date	Purpose of revision	Orig/Dwn	Check'd	Rev'd	Appr'd

**JACOBS**  
 95 Bothwell Street, Glasgow, G2 7HX, UK.  
 Tel: +44(0) 141 243 8000  
 www.jacobs.com

Client  
  
 TRANSPORT SCOTLAND  
 CORRIDOR ALBA

Project  
  
**A9**  
 DUALLING  
 PERTH TO INVERNESS  
 Killiecrankie to Glen Garry

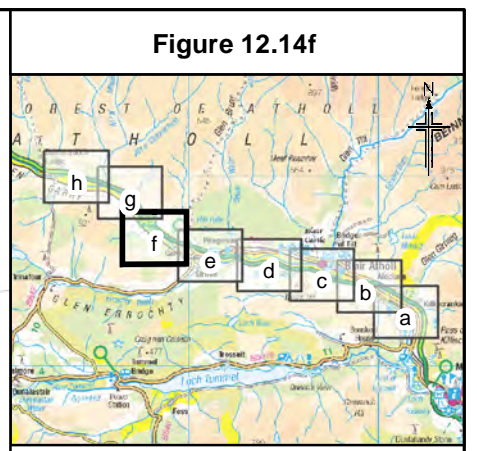
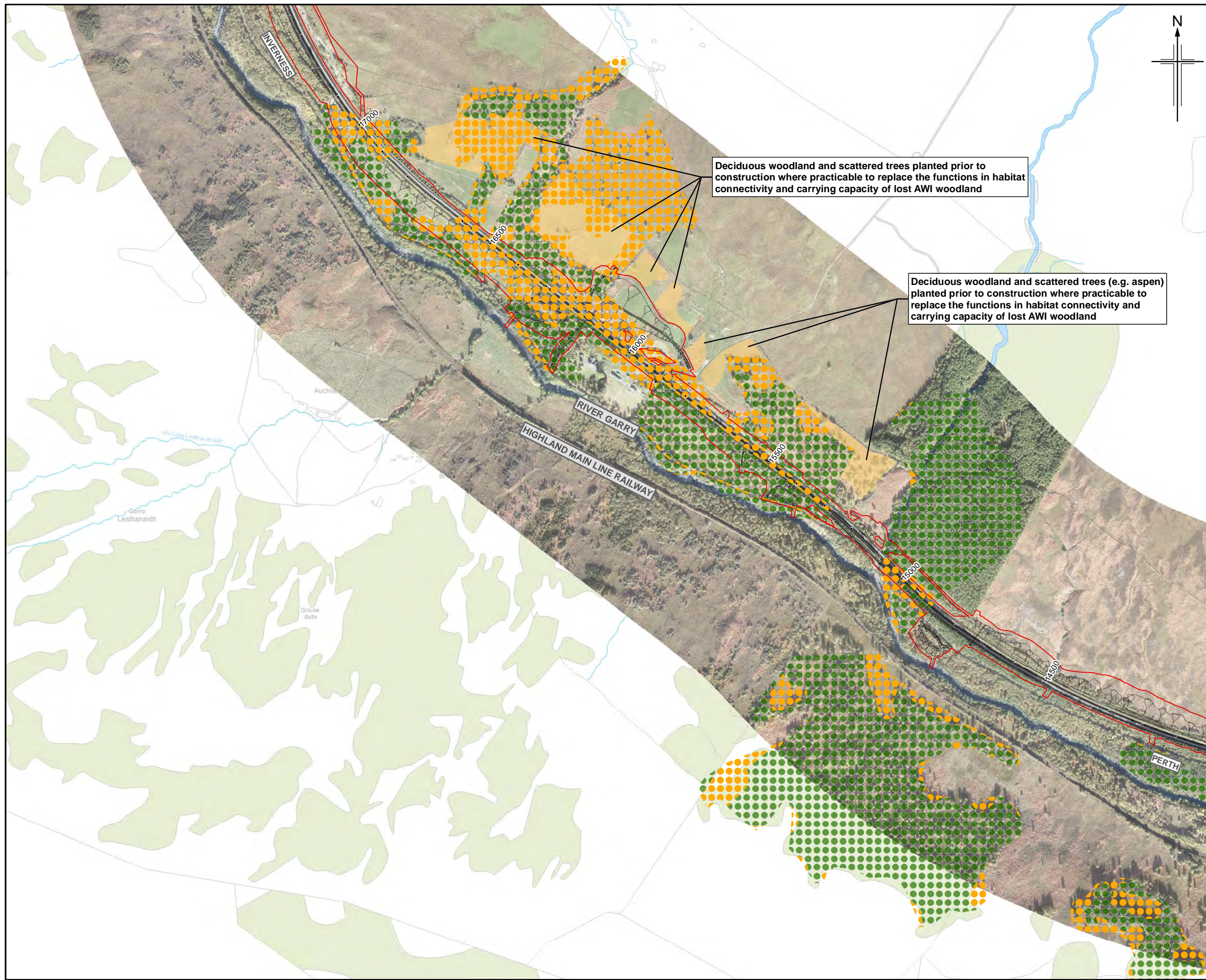
Drawing title  
**Environmental Statement  
 Ancient Woodland Inventory (AWI)  
 Loss and Compensation**

Sheet 5 of 8

Drawing Status	FINAL		
Scale	1:10,000	@ A3	DO NOT SCALE
Jacobs No.	B2140005		
BIM No.			
Drawing number	<b>Figure 12.14e</b>		Rev <b>0</b>



This drawing is not to be used in whole or part other than for the intended purpose and project as defined on this drawing. Refer to the contract for full terms and conditions.



- Legend**
- Proposed scheme (DMRB Stage 3 Design)
  - SuDS
  - Land Made Available (LMA)
  - Verified AWI (wooded)
  - Lost AWI (unwooded)
  - AWI mitigation area

0	NOV 2017	ED Publication	EM	SC	PG	AJG
Rev.	Rev. Date	Purpose of revision	Orig/Dwn	Checkd	Rev'd	Appr'd

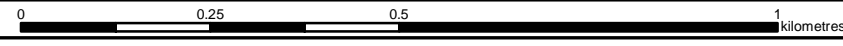
**JACOBS**  
 95 Bothwell Street, Glasgow, G2 7HX, UK.  
 Tel: +44(0) 141 243 8000  
 www.jacobs.com

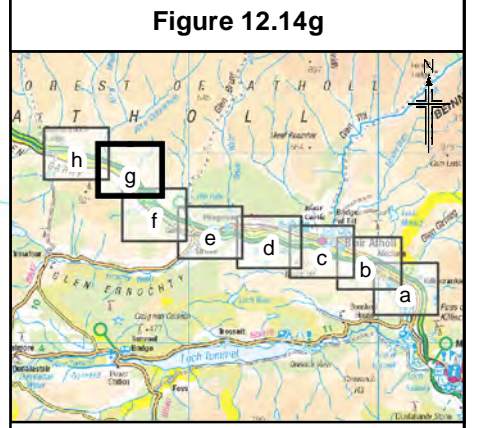
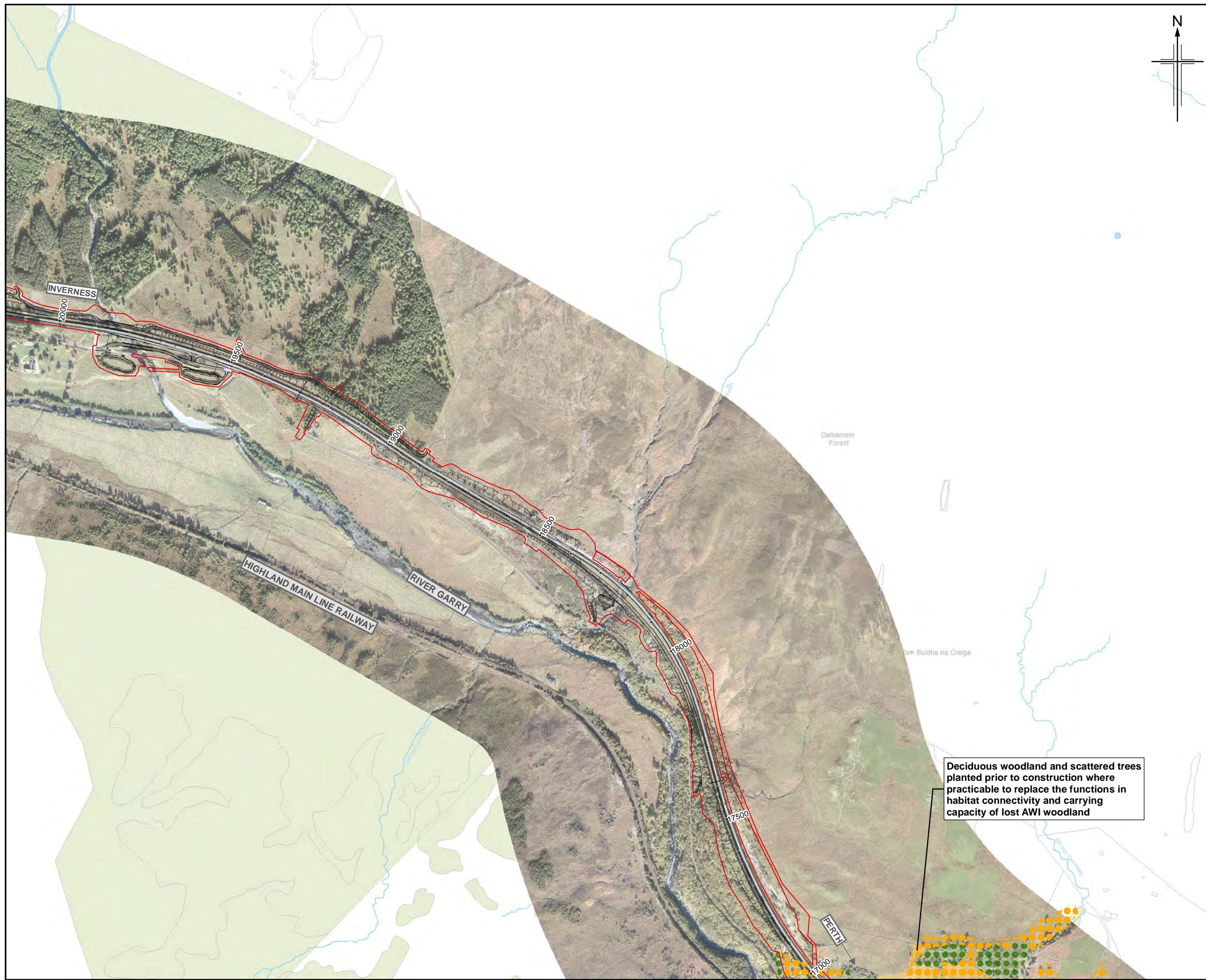
Client  
  
 TRANSPORT SCOTLAND  
 CÒRRAIDH ALBA

Project  
  
**A9**  
 DUALLING  
 PERTH TO INVERNESS  
 Killiecrankie to Glen Garry

Drawing title  
**Environmental Statement  
 Ancient Woodland Inventory (AWI)  
 Loss and Compensation**

Drawing Status	FINAL		
Scale	1:10,000	@ A3	DO NOT SCALE
Jacobs No.	B2140005		
BIM No.			
Drawing number	Figure 12.14f		Rev 0





- Legend**
- Proposed scheme (DMRB Stage 3 Design)
  - SuDS
  - Land Made Available (LMA)
  - Verified AWI (wooded)
  - Lost AWI (unwooded)
  - AWI mitigation area

0	NOV 2017	ES Publication	EM	SC	PG	AJG
Rev.	Rev. Date	Purpose of revision	Orig/Dwn	Checkd	Rev'd	Apprv'd

**JACOBS**  
 95 Bothwell Street, Glasgow, G2 7HX, UK.  
 Tel: +44(0) 141 243 8000  
 www.jacobs.com

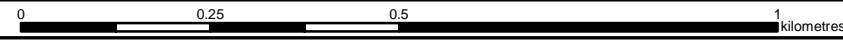
Client  
  
 TRANSPORT SCOTLAND  
 CÒRRAIDH ALBA

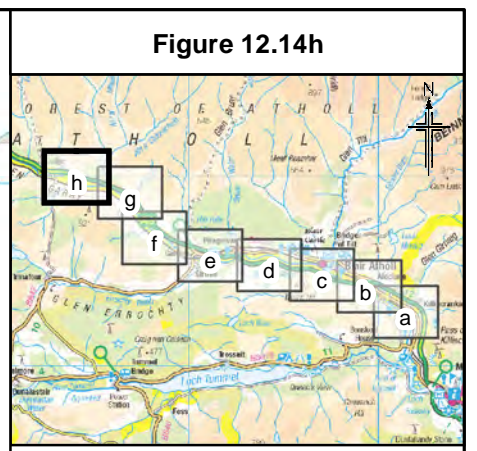
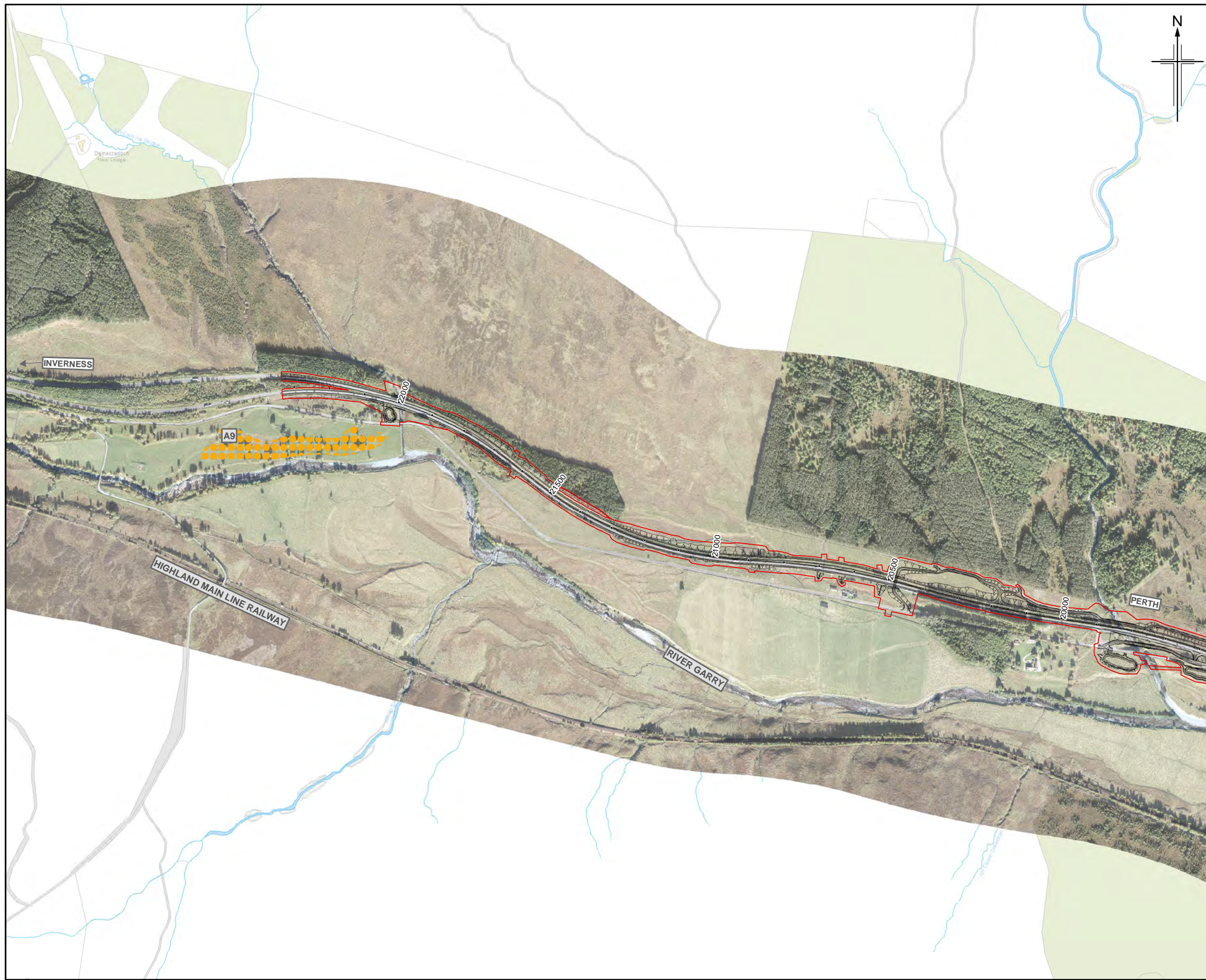
Project  
  
**A9 DUALLING**  
 PERTH TO INVERNESS  
 Killiecrankie to Glen Garry

Drawing title  
**Environmental Statement  
 Ancient Woodland Inventory (AWI)  
 Loss and Compensation**

Drawing Status	FINAL		
Scale	1:10,000	@ A3	DO NOT SCALE
Jacobs No.	B2140005		
BIM No.			
Drawing number	<b>Figure 12.14g</b>		Rev <b>0</b>

This drawing is not to be used in whole or part other than for the intended purpose and project as defined on this drawing. Refer to the contract for full terms and conditions.





- Legend**
- Proposed scheme (DMRB Stage 3 Design)
  - Lost AWI (unwooded)
  - Verified AWI (wooded)
  - AWI mitigation area

0	NOV 2017	ES Publication	EM	SC	PG	AJG
Rev.	Rev. Date	Purpose of revision	Orig/Dwn	Checkd	Rev'd	Apprv'd

**JACOBS**  
 95 Bothwell Street, Glasgow, G2 7HX, UK.  
 Tel: +44(0) 141 243 8000  
 www.jacobs.com

Client  
  
 TRANSPORT SCOTLAND  
 CORRIDOR ALBA

Project  
  
**A9**  
 DUALLING  
 PERTH TO INVERNESS  
 Killiecrankie to Glen Garry

Drawing title

**Environmental Statement  
 Ancient Woodland Inventory (AWI)  
 Loss and Compensation**

Sheet 8 of 8

Drawing Status	FINAL		
Scale	1:10,000	@ A3	DO NOT SCALE
Jacobs No.	B2140005		
BIM No.			
Drawing number	<b>Figure 12.14h</b>		Rev <b>0</b>

