

**Legend**

- Proposed scheme (DMRB Stage 3 Design)
- 5km Study area
- Target point

**Zone of Theoretical Visibility (ZTV) \***

- Visibility of a high number of target points along the proposed scheme
- Visibility of a low number of target points along the proposed scheme

\* Note:  
 Target points every 50m along the proposed scheme (using the centre line of the scheme and including side roads) were used to establish visibility. The height from alignment was set at 4.5m and viewer height was 1.75m. The ZTV calculation only takes account of landform and does not take into account any surface features such as buildings or vegetation.

0	NOV 2017	ES Publication	EM/JCr	MK/NO	ML	AJG
Rev.	Rev. Date	Purpose of revision	Orig/Dwn	Checkd	Rev'd	Apprv'd

**JACOBS**  
 95 Bothwell Street, Glasgow, G2 7HX, UK.  
 Tel: +44(0)141 243 8000  
 www.jacobs.com

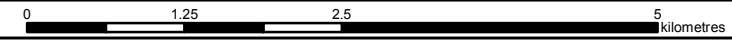
Client  
  
 TRANSPORT SCOTLAND  
 COPHDHAL ALBA

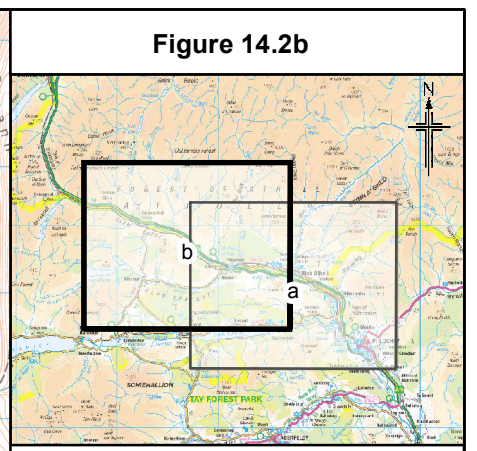
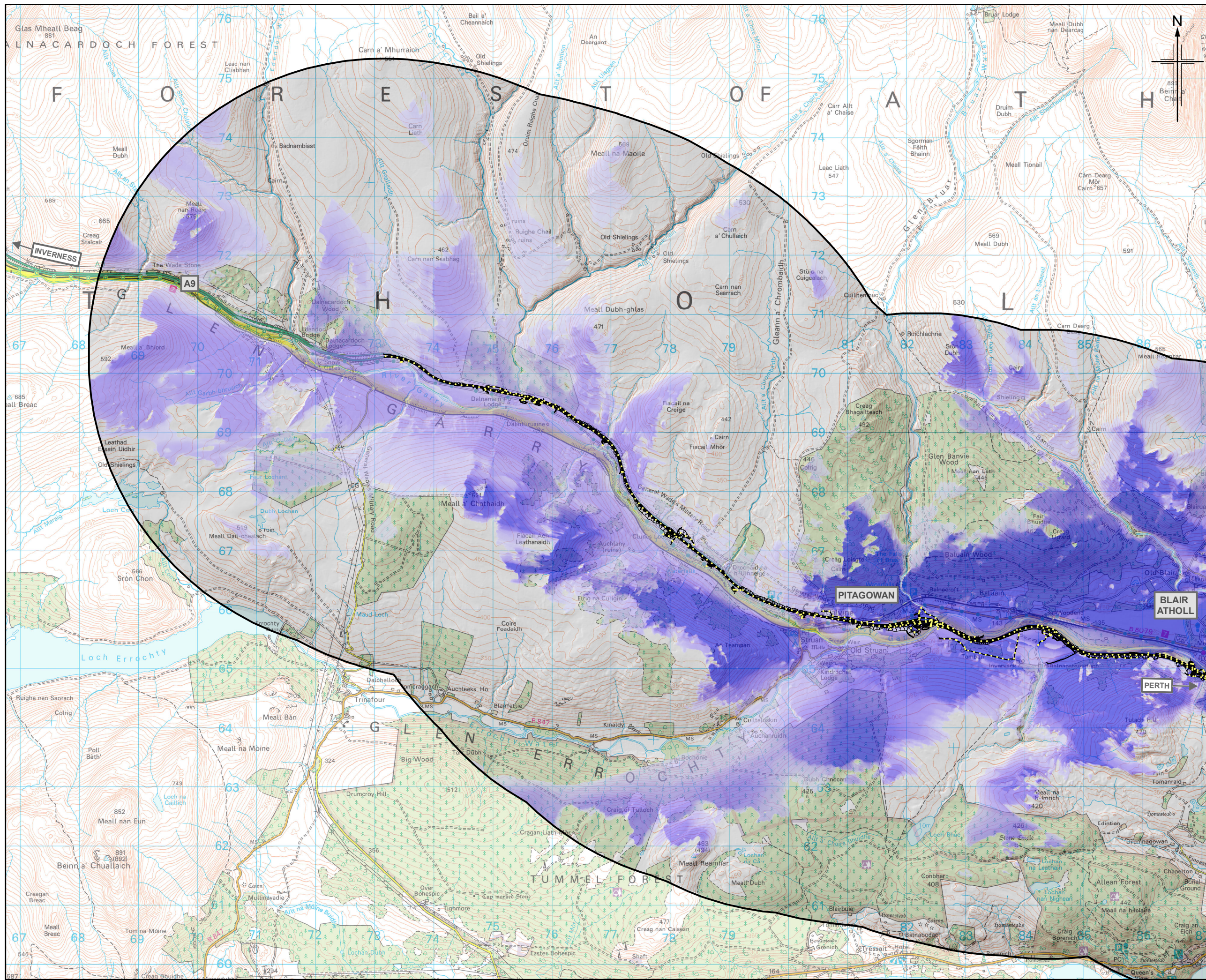
Project  
  
 A9  
 DUALLING  
 PERTH TO INVERNESS  
 Killiecrankie to Glen Garry

Drawing title  
**Environmental Statement  
 Zone of Theoretical Visibility (ZTV) Analysis  
 Proposed Scheme**

Drawing Status	FINAL	Sheet 1 of 2
Scale	1:60,000 @ A3	DO NOT SCALE
Jacobs No.	B2140005	
BIM No.		
Drawing number	<b>Figure 14.2a</b>	Rev 0

This drawing is not to be used in whole or part other than for the intended purpose and project as defined on this drawing. Refer to the contract for full terms and conditions.





**Legend**

- Proposed scheme (DMRB Stage 3 Design)
- 5km Study area
- Target point

**Zone of Theoretical Visibility (ZTV) \***

- Visibility of a high number of target points along the proposed scheme
- Visibility of a low number of target points along the proposed scheme

\* Note:  
 Target points every 50m along the proposed scheme (using the centre line of the scheme and including side roads) were used to establish visibility. The height from alignment was set at 4.5m and viewer height was 1.75m. The ZTV calculation only takes account of landform and does not take into account any surface features such as buildings or vegetation.

Rev.	Rev. Date	Purpose of revision	Orig/Dwn	Check'd	Rev'd	Apprv'd
0	NOV 2017	ES Publication	JCR	MK/NO	ML	AJG

**JACOBS**  
 95 Bothwell Street, Glasgow, G2 7HX, UK.  
 Tel: +44(0)141 243 8000  
 www.jacobs.com

Client  
**TRANSPORT SCOTLAND**  
 COMHIAL ALBA

Project  
**A9 DUALLING**  
 PERTH TO INVERNESS  
 Killiecrankie to Glen Garry

Drawing title  
**Environmental Statement**  
**Zone of Theoretical Visibility (ZTV) Analysis**  
**Proposed Scheme**

Drawing Status	FINAL	Sheet 2 of 2
Scale	1:60,000 @ A3	DO NOT SCALE
Jacobs No.	B2140005	
BIM No.		
Drawing number	Figure 14.2b	Rev 0