

**Figure 17.8a**

**Legend**

- Proposed scheme (DMRB Stage 3 Design)
- SuDS
- 600m Calculation area
- Health and education buildings
- Baseline noise monitoring locations - sample receptor

**Do-Minimum Baseline Year Vs Do-Something Future Assessment Year (L<sub>A10,18hr</sub> Free-field) First Floor**

**x = noise level**

- $x \geq 10$  dB
- $5 \leq x < 10$  dB
- $3 \leq x < 5$  dB
- $0 < x < 3$  dB
- $x = 0$  dB
- $-3 < x < 0$  dB
- $-5 < x \leq -3$  dB
- $-10 < x \leq -5$  dB
- $x \leq -10$  dB

0	NOV 2017	ES Publication	KAJCr	SG	DP	AJG
Rev.	Rev. Date	Purpose of revision	Orig/Dwn	Checkd	Rev'd	Apprv'd

**JACOBS**  
95 Bothwell Street, Glasgow, G2 7HX, UK.  
Tel: +44(0)141 243 8000  
www.jacobs.com

Client

**TRANSPORT SCOTLAND**  
COBHIDHAL ALBA

Project

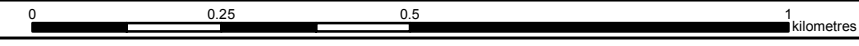
**A9 DUALLING**  
PERTH TO INVERNESS  
Killiecrankie to Glen Garry

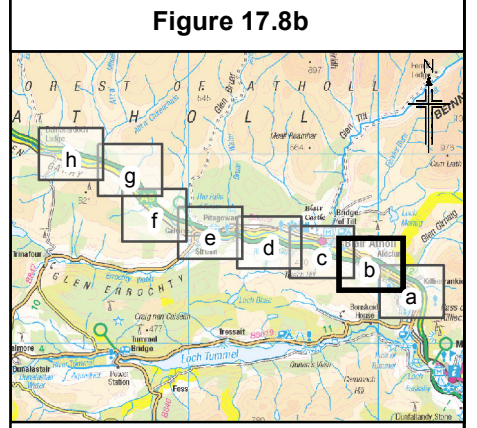
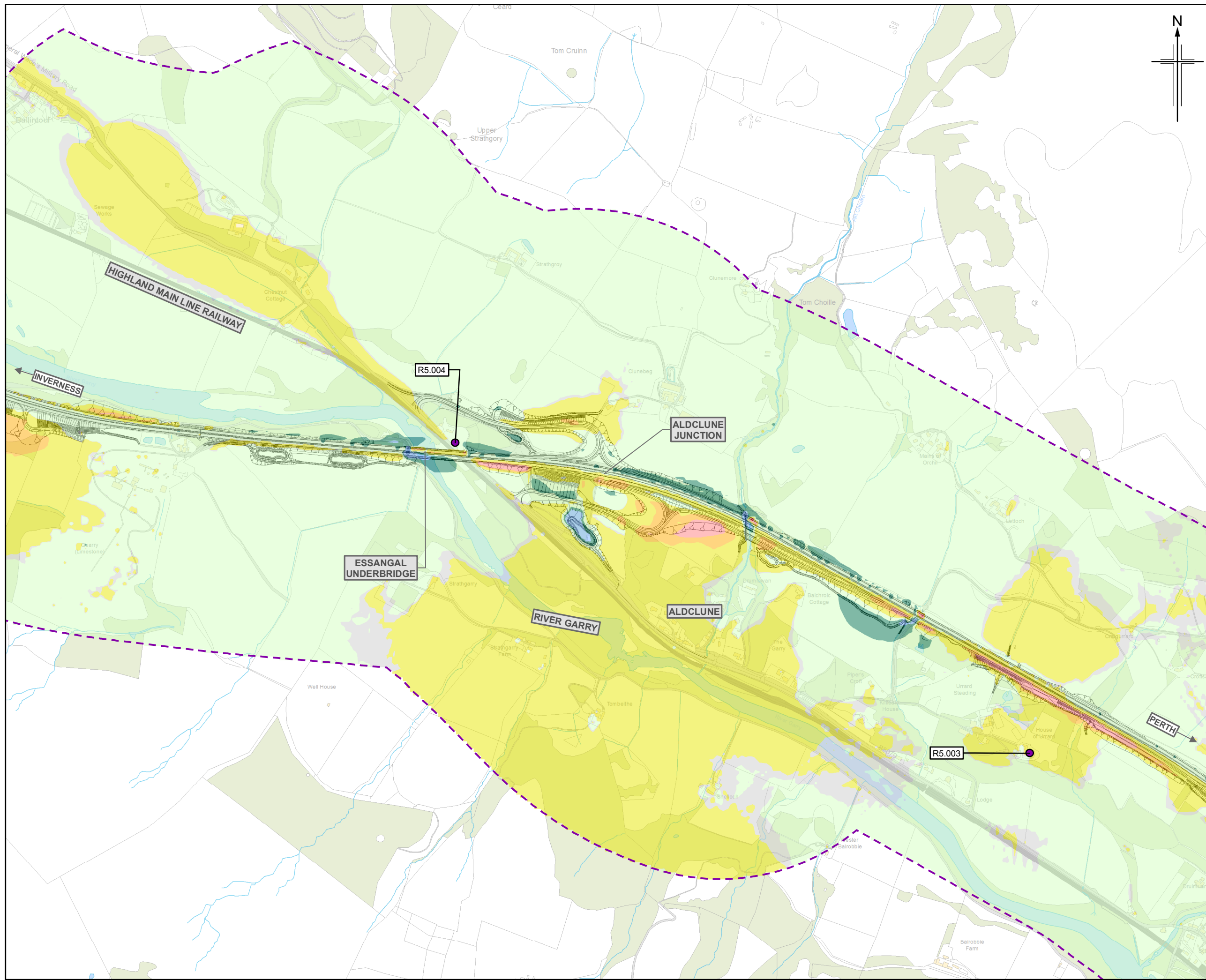
Drawing title

**Environmental Statement  
Noise Level Difference Contour Map  
(First Floor) Do-Minimum Baseline Year Vs  
Do-Something Future Assessment Year**

Sheet 1 of 8

Drawing Status	FINAL
Scale	1:10,000 @ A3 DO NOT SCALE
Jacobs No.	B2140005
BIM No.	
Drawing number	<b>Figure 17.8a</b>
Rev	<b>0</b>





**Legend**

- Proposed scheme (DMRB Stage 3 Design)
- SuDS
- 600m Calculation area
- Health and education buildings
- Baseline noise monitoring locations - sample receptor

**Do-Minimum Baseline Year Vs Do-Something Future Assessment Year (L<sub>A10,18hr</sub> Free-field) First Floor**

**x = noise level**

- x ≥ 10 dB
- 5 ≤ x < 10 dB
- 3 ≤ x < 5 dB
- 0 < x < 3 dB
- x = 0 dB
- 3 < x < 0 dB
- 5 < x ≤ -3 dB
- 10 < x ≤ -5 dB
- x ≤ -10 dB

0	NOV 2017	ES Publication	KAJCr	SG	DP	AJG
Rev.	Rev. Date	Purpose of revision	Orig/Dwn	Checkd	Rev'd	Apprv'd

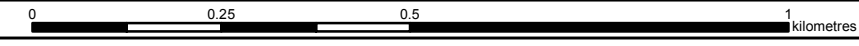
**JACOBS**  
95 Bothwell Street, Glasgow, G2 7HX, UK  
Tel: +44(0)141 243 8000  
www.jacobs.com

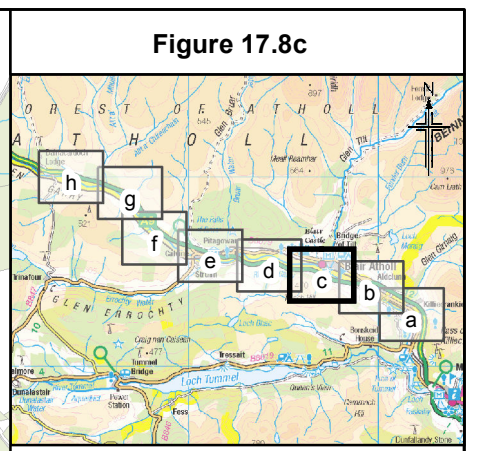
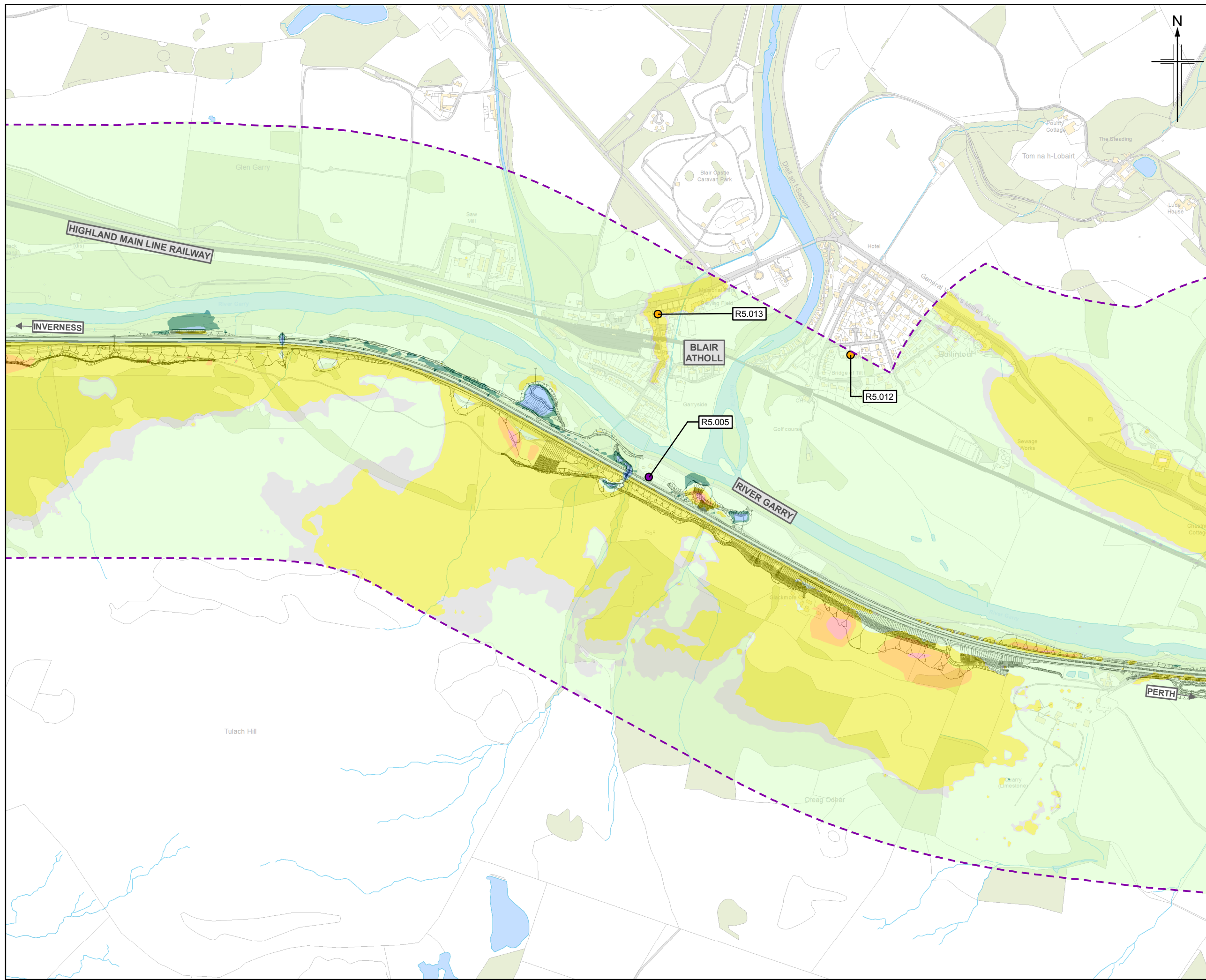
Client  
**TRANSPORT SCOTLAND**  
COMHISHAL ALBA

Project  
**A9 DUALLING**  
PERTH TO INVERNESS  
Killiecrankie to Glen Garry

Drawing title  
**Environmental Statement  
Noise Level Difference Contour Map  
(First Floor) Do-Minimum Baseline Year Vs  
Do-Something Future Assessment Year**

Drawing Status	FINAL
Scale	1:10,000 @ A3 DO NOT SCALE
Jacobs No.	B2140005
BIM No.	
Drawing number	<b>Figure 17.8b</b>
Rev	<b>0</b>





**Legend**

- Proposed scheme (DMRB Stage 3 Design)
- SuDS
- 600m Calculation area
- Health and education buildings
- Baseline noise monitoring locations - sample receptor

**Do-Minimum Baseline Year Vs Do-Something Future Assessment Year (L<sub>A10,18hr</sub> Free-field) First Floor**

**x = noise level**

- $x \geq 10$  dB
- $5 \leq x < 10$  dB
- $3 \leq x < 5$  dB
- $0 < x < 3$  dB
- $x = 0$  dB
- $-3 < x < 0$  dB
- $-5 < x \leq -3$  dB
- $-10 < x \leq -5$  dB
- $x \leq -10$  dB

0	NOV 2017	ES Publication	KAJCr	SG	DP	AJG
Rev.	Rev. Date	Purpose of revision	Orig/Dwn	Checkd	Rev'd	Apprv'd

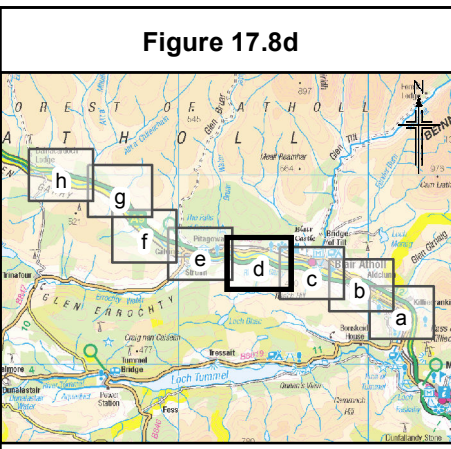
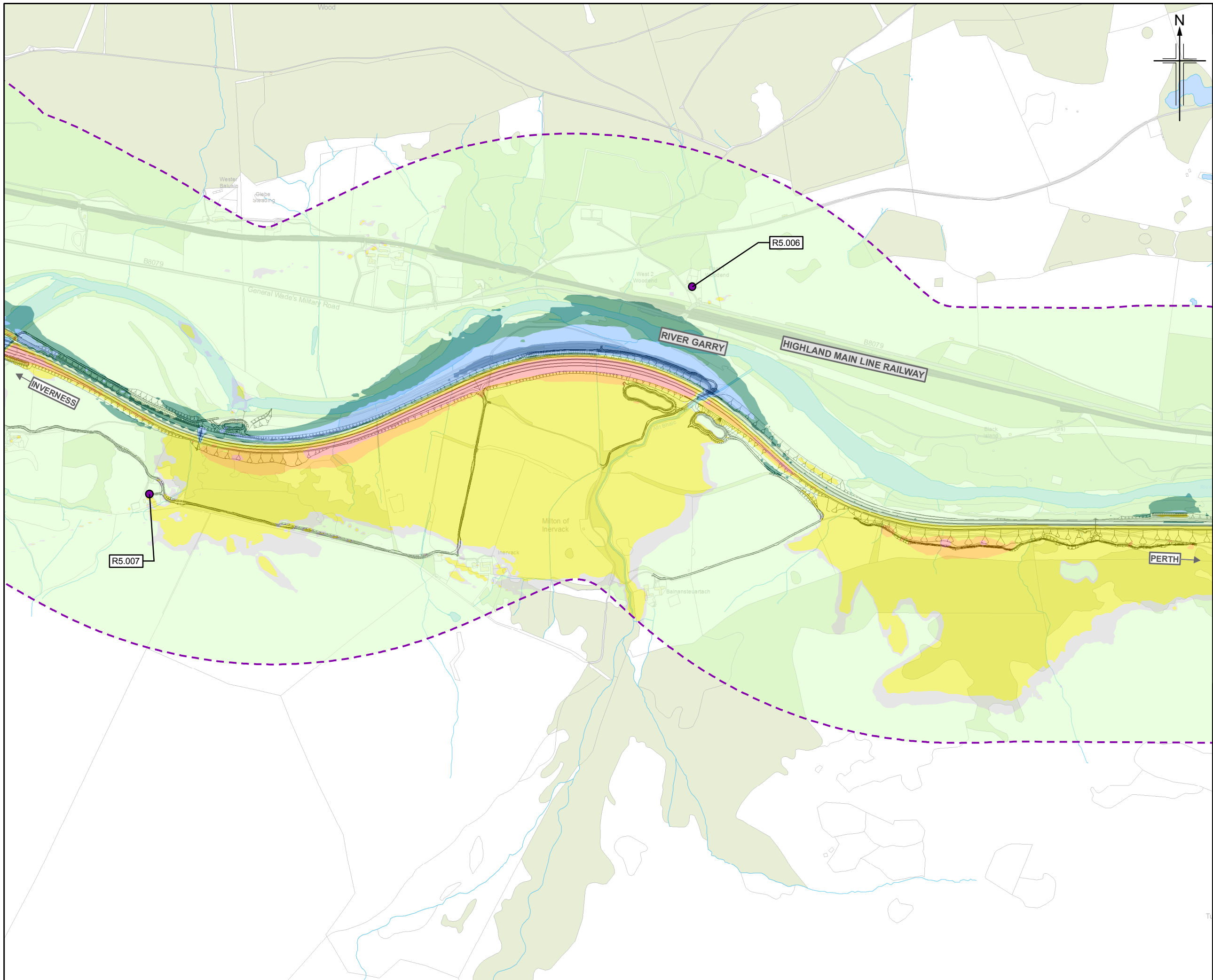
**JACOBS**  
95 Bothwell Street, Glasgow, G2 7HX, UK  
Tel: +44(0)141 243 8000  
www.jacobs.com

Client  
**TRANSPORT SCOTLAND**  
COBHIDHAL ALBA

Project  
**A9 DUALLING**  
PERTH TO INVERNESS  
Killiecrankie to Glen Garry

Drawing title  
**Environmental Statement  
Noise Level Difference Contour Map  
(First Floor) Do-Minimum Baseline Year Vs  
Do-Something Future Assessment Year**  
Sheet 3 of 8

Drawing Status	FINAL	
Scale	1:10,000 @ A3	DO NOT SCALE
Jacobs No.	B2140005	
BIM No.		
Drawing number	Figure 17.8c	Rev 0



**Figure 17.8d**

**Legend**

- Proposed scheme (DMRB Stage 3 Design)
- SuDS
- 600m Calculation area
- Health and education buildings
- Baseline noise monitoring locations - sample receptor

**Do-Minimum Baseline Year Vs Do-Something Future Assessment Year (L<sub>A10,18hr</sub> Free-field) First Floor**

**x = noise level**

- $x \geq 10$  dB
- $5 \leq x < 10$  dB
- $3 \leq x < 5$  dB
- $0 < x < 3$  dB
- $x = 0$  dB
- $-3 < x < 0$  dB
- $-5 < x \leq -3$  dB
- $-10 < x \leq -5$  dB
- $x \leq -10$  dB

0	NOV 2017	ES Publication	KAJCr	SG	DP	AJG
Rev.	Rev. Date	Purpose of revision	Orig/Dwn	Checkd	Rev'd	Apprv'd

**JACOBS**  
 95 Bothwell Street, Glasgow, G2 7HX, UK.  
 Tel: +44(0)141 243 8000  
 www.jacobs.com

Client  
  
 TRANSPORT SCOTLAND  
 COBHIDHAL ALBA

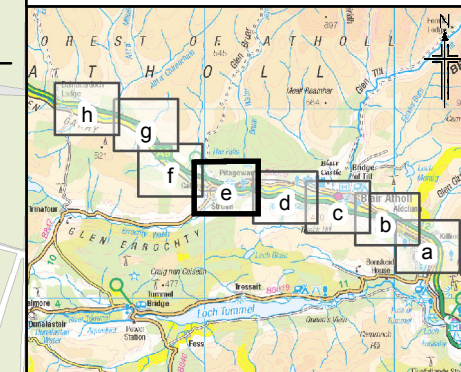
Project  
  
**A9 DUALLING**  
 PERTH TO INVERNESS  
 Killiecrankie to Glen Garry

Drawing title  
**Environmental Statement**  
**Noise Level Difference Contour Map**  
**(First Floor) Do-Minimum Baseline Year Vs**  
**Do-Something Future Assessment Year**  
 Sheet 4 of 8

Drawing Status	FINAL		
Scale	1:10,000	@ A3	DO NOT SCALE
Jacobs No.	B2140005		
BIM No.			
Drawing number	<b>Figure 17.8d</b>		Rev <b>0</b>



Figure 17.8e



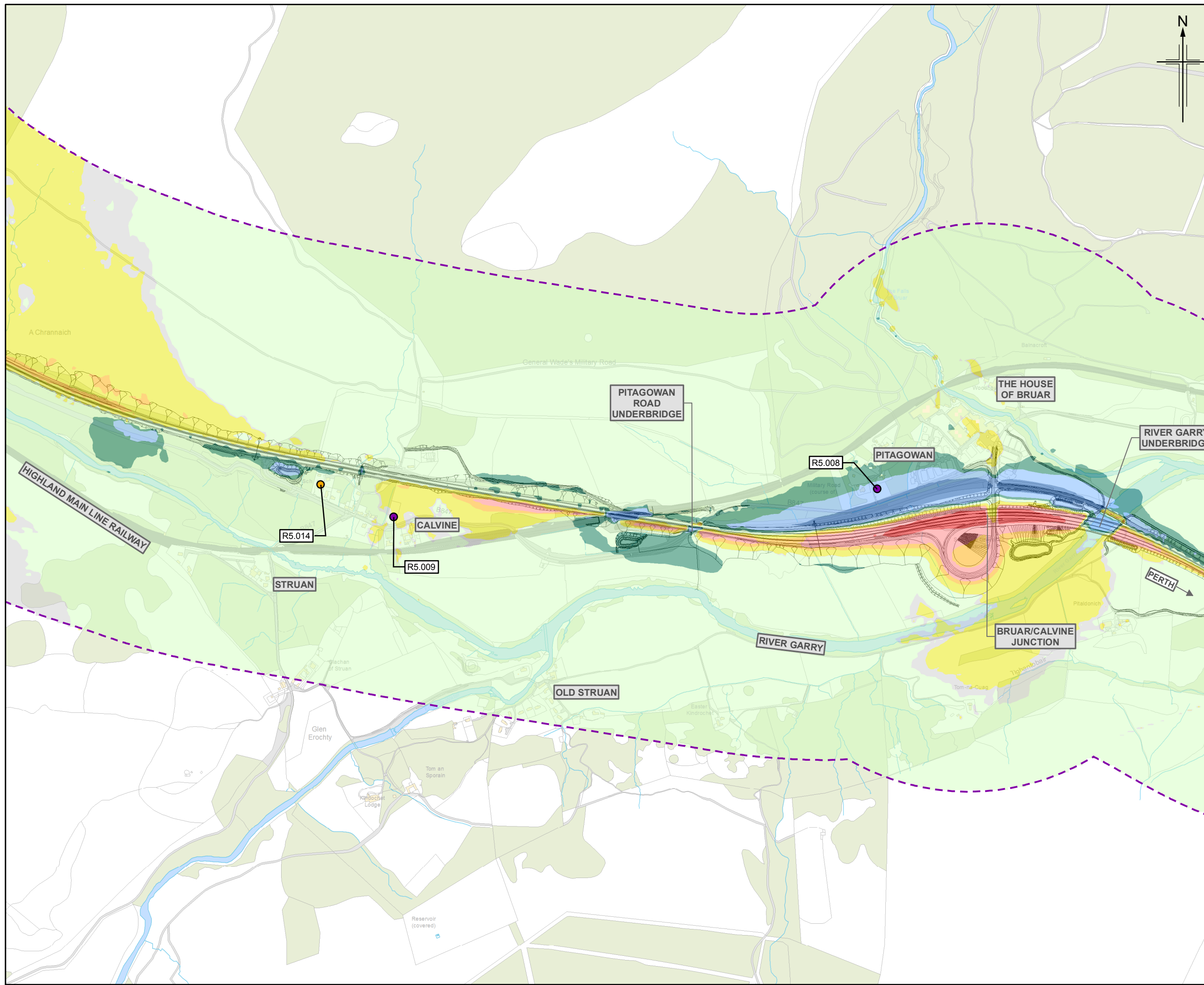
**Legend**

- Proposed scheme (DMRB Stage 3 Design)
- SuDS
- 600m Calculation area
- Health and education buildings
- Baseline noise monitoring locations - sample receptor

**Do-Minimum Baseline Year Vs Do-Something Future Assessment Year (L<sub>A10,18hr</sub> Free-field) First Floor**

**x = noise level**

- x ≥ 10 dB
- 5 ≤ x < 10 dB
- 3 ≤ x < 5 dB
- 0 < x < 3 dB
- x = 0 dB
- 3 < x < 0 dB
- 5 < x ≤ -3 dB
- 10 < x ≤ -5 dB
- x ≤ -10 dB



0	NOV 2017	ES Publication	KAJCr	SG	DP	AJG
Rev.	Rev. Date	Purpose of revision	Orig/Dwn	Check'd	Rev'd	Apprv'd

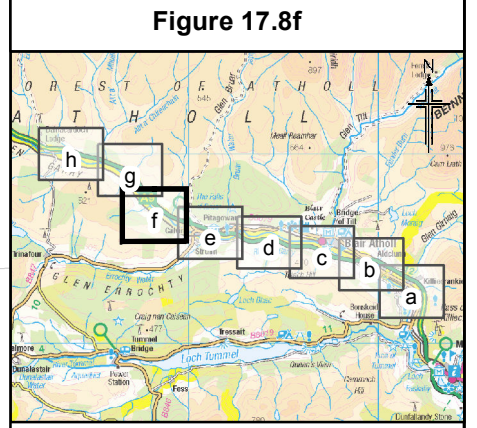
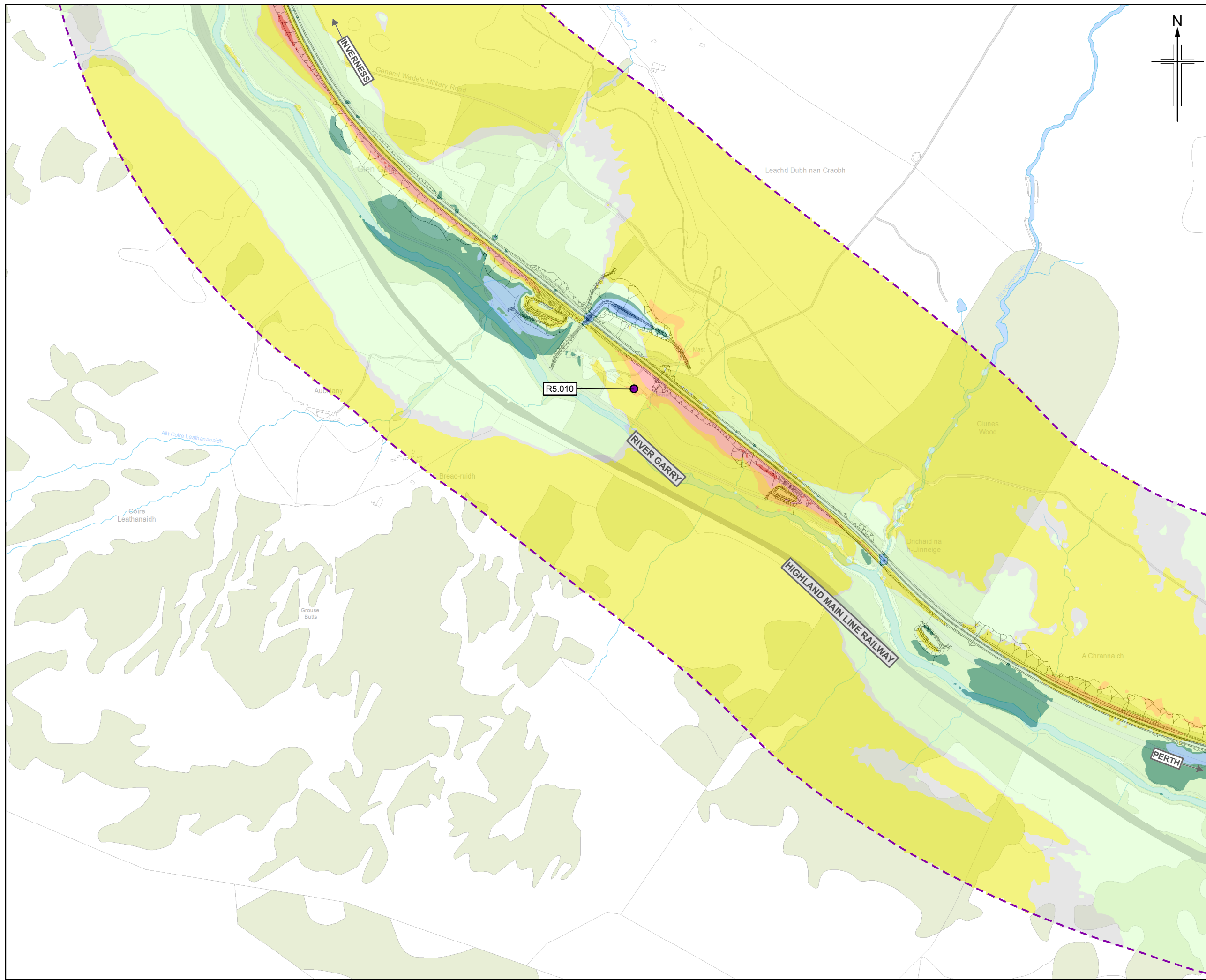
**JACOBS**  
95 Bothwell Street, Glasgow, G2 7HX, UK.  
Tel: +44 (0) 141 243 8000  
www.jacobs.com

Client  
**TRANSPORT SCOTLAND**  
COIMHISAL ALBA

Project  
**A9 DUALLING**  
PERTH TO INVERNESS  
Killiecrankie to Glen Garry

Drawing title  
**Environmental Statement  
Noise Level Difference Contour Map  
(First Floor) Do-Minimum Baseline Year Vs  
Do-Something Future Assessment Year**  
Sheet 5 of 8

Drawing Status	FINAL		
Scale	1:10,000	@ A3	DO NOT SCALE
Jacobs No.	B2140005		
BIM No.			
Drawing number	Figure 17.8e		Rev 0



**Figure 17.8f**

**Legend**

- Proposed scheme (DMRB Stage 3 Design)
- SuDS
- 600m Calculation area
- Health and education buildings
- Baseline noise monitoring locations - sample receptor

**Do-Minimum Baseline Year Vs Do-Something Future Assessment Year (L<sub>A10,18hr</sub> Free-field) First Floor**

**x = noise level**

- x ≥ 10 dB
- 5 ≤ x < 10 dB
- 3 ≤ x < 5 dB
- 0 < x < 3 dB
- x = 0 dB
- 3 < x < 0 dB
- 5 < x ≤ -3 dB
- 10 < x ≤ -5 dB
- x ≤ -10 dB

0	NOV 2017	ES Publication	KAJCr	SG	DP	AJG
Rev.	Rev. Date	Purpose of revision	Orig/Dwn	Checkd	Rev'd	Apprv'd

**JACOBS**  
95 Bothwell Street, Glasgow, G2 7HX, UK  
Tel: +44 (0) 141 243 8000  
www.jacobs.com

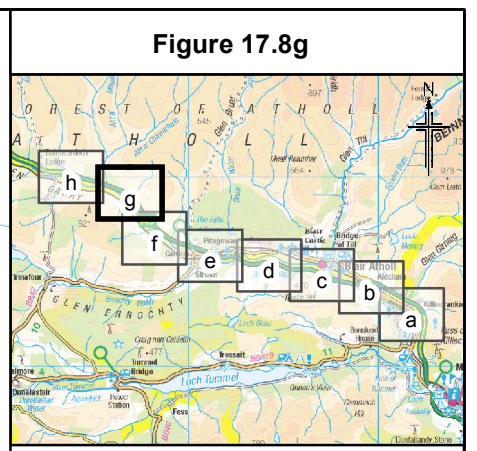
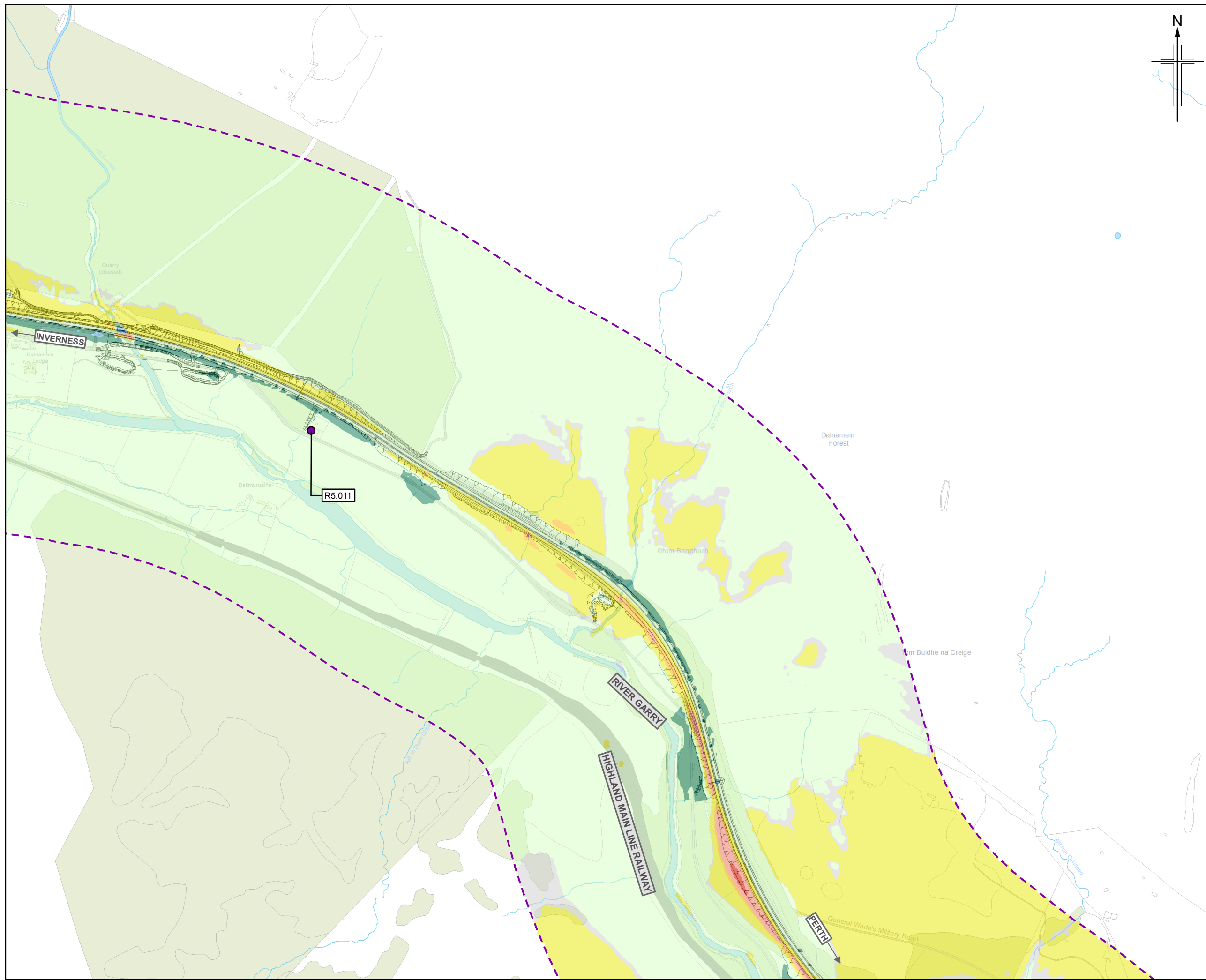
Client  
**TRANSPORT SCOTLAND**  
COMHISHAL ALBA

Project  
**A9 DUALLING**  
PERTH TO INVERNESS  
Killiecrankie to Glen Garry

Drawing title  
**Environmental Statement  
Noise Level Difference Contour Map  
(First Floor) Do-Minimum Baseline Year Vs  
Do-Something Future Assessment Year**

Sheet 6 of 8

Drawing Status	FINAL		
Scale	1:10,000	@ A3	DO NOT SCALE
Jacobs No.	B2140005		
BIM No.			
Drawing number	<b>Figure 17.8f</b>		Rev <b>0</b>



**Legend**

- Proposed scheme (DMRB Stage 3 Design)
- SuDS
- 600m Calculation area
- Health and education buildings
- Baseline noise monitoring locations - sample receptor

**Do-Minimum Baseline Year Vs Do-Something Future Assessment Year (L<sub>A10,18hr</sub> Free-field) First Floor**

**x = noise level**

- x ≥ 10 dB
- 5 ≤ x < 10 dB
- 3 ≤ x < 5 dB
- 0 < x < 3 dB
- x = 0 dB
- 3 < x < 0 dB
- 5 < x ≤ -3 dB
- 10 < x ≤ -5 dB
- x ≤ -10 dB

0	NOV 2017	ES Publication	KAJCr	SG	DP	AJG
Rev.	Rev. Date	Purpose of revision	Orig/Dwn	Check/Rev'd	Appr'd	

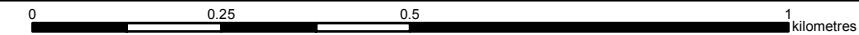
**JACOBS**  
95 Bothwell Street, Glasgow, G2 7HX, UK  
Tel: +44(0)141 243 8000  
www.jacobs.com

Client  
**TRANSPORT SCOTLAND**  
COBHIDHAIL ALBA

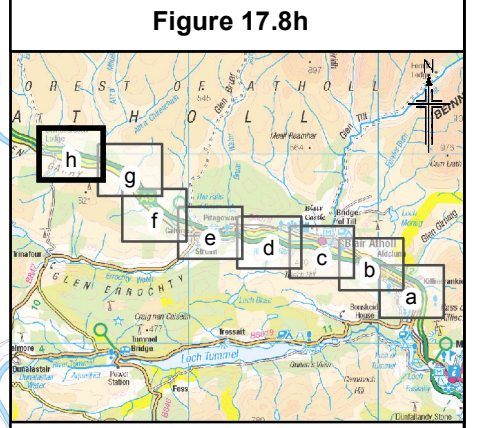
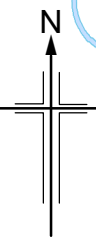
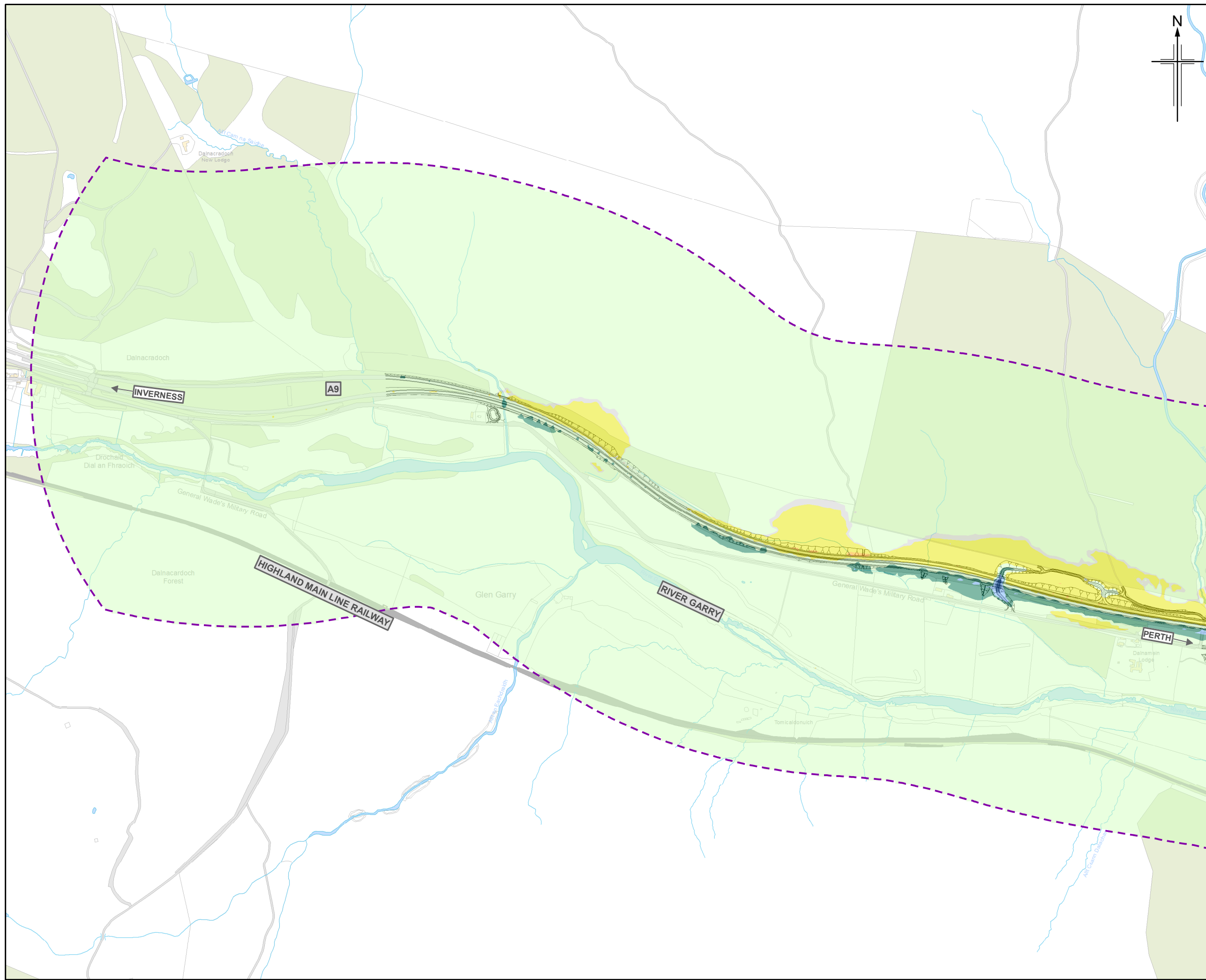
Project  
**A9 DUALLING**  
PERTH TO INVERNESS  
Killiecrankie to Glen Garry

Drawing title  
**Environmental Statement  
Noise Level Difference Contour Map  
(First Floor) Do-Minimum Baseline Year Vs  
Do-Something Future Assessment Year**  
Sheet 7 of 8

Drawing Status	FINAL	
Scale	1:10,000 @ A3	DO NOT SCALE
Jacobs No.	B2140005	
BIM No.		
Drawing number	Figure 17.8g	Rev 0



This drawing is not to be used in whole or part other than for the intended purpose and project as defined on this drawing. Refer to the contract for full terms and conditions.



**Legend**

- Proposed scheme (DMRB Stage 3 Design)
- SuDS
- 600m Calculation area
- Health and education buildings
- Baseline noise monitoring locations - sample receptor

**Do-Minimum Baseline Year Vs Do-Something Future Assessment Year (L<sub>A10,18hr</sub> Free-field) First Floor**

**x = noise level**

- $x \geq 10$  dB
- $5 \leq x < 10$  dB
- $3 \leq x < 5$  dB
- $0 < x < 3$  dB
- $x = 0$  dB
- $-3 < x < 0$  dB
- $-5 < x \leq -3$  dB
- $-10 < x \leq -5$  dB
- $x \leq -10$  dB

0	NOV 2017	ES Publication	KAJCr	SG	DP	AJG
Rev.	Rev. Date	Purpose of revision	Orig/Dwn	Checkd	Rev'd	Apprv'd

**JACOBS**  
95 Bothwell Street, Glasgow, G2 7HX, UK  
Tel: +44 (0) 141 243 8000  
www.jacobs.com

Client

TRANSPORT SCOTLAND  
COBHIDHAIL ALBA

Project

**A9**  
DUALLING  
PERTH TO INVERNESS  
Killiecrankie to Glen Garry

Drawing title

**Environmental Statement  
Noise Level Difference Contour Map  
(First Floor) Do-Minimum Baseline Year Vs  
Do-Something Future Assessment Year**

Sheet 8 of 8

Drawing Status	FINAL		
Scale	1:10,000	@ A3	DO NOT SCALE
Jacobs No.	B2140005		
BIM No.			
Drawing number	<b>Figure 17.8h</b>		Rev <b>0</b>

