




-  DS Stage 3 Design
-  Planned Development with Consent
-  Potential Slope Area

Proposed
Northbound Type-A
Lay-by Location

Proposed
Southbound Type-A
Lay-by Location

Aviemore
Burn

Aviemore

Aviemore
Burn

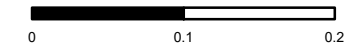
Highland Main Line Railway

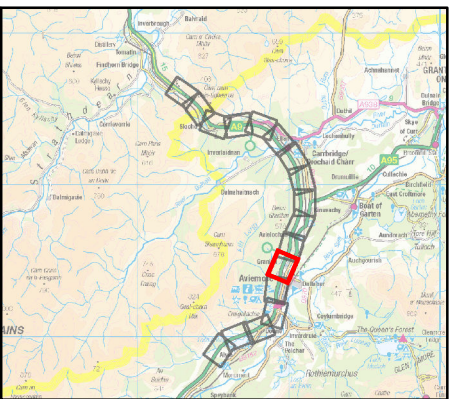
Continued on Sheet 4




Continued on Sheet 6

The design shown is under development as part of the ongoing Stage 3 Assessment design development.

Dalraddy to Slochd
Stage 3 Design
Sheet 5 of 17

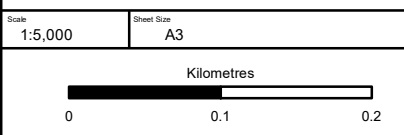
Scale 1:5,000	Sheet Size A3
Kilometres	
	

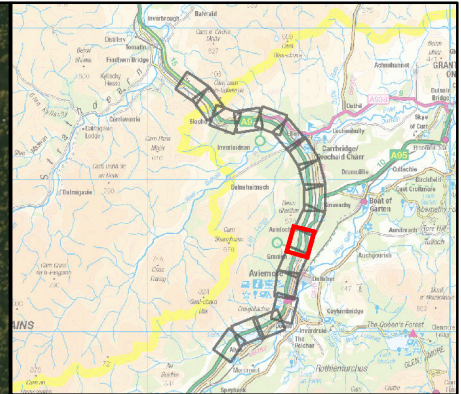



-  DS Stage 3 Design
-  Planned Development with Consent
-  Potential Slope Area

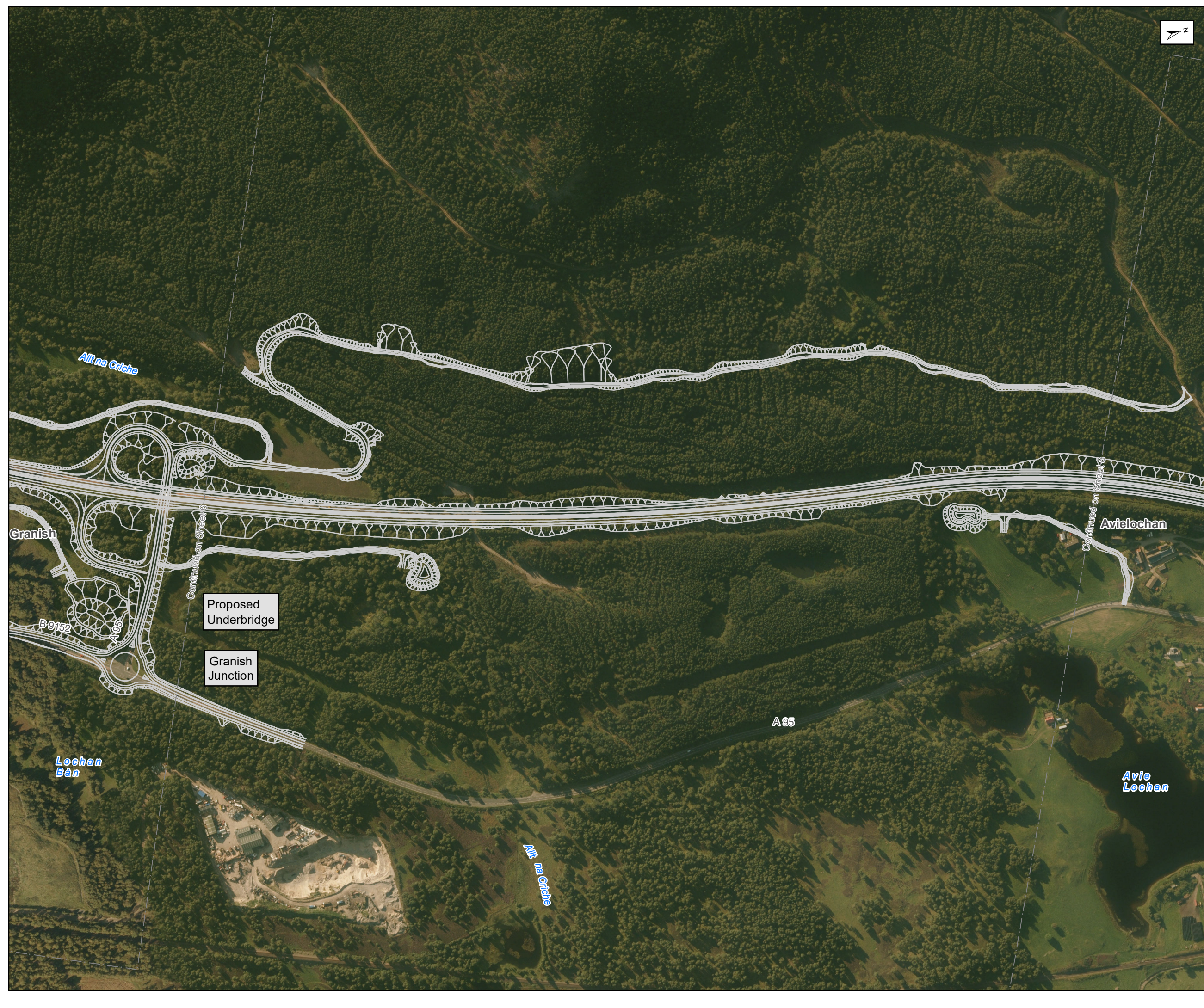
The design shown is under development as part of the ongoing Stage 3 Assessment design development.

Dalraddy to Slochd
Stage 3 Design
Sheet 6 of 17





-  DS Stage 3 Design
-  Planned Development with Consent
-  Potential Slope Area

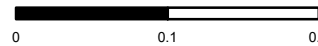


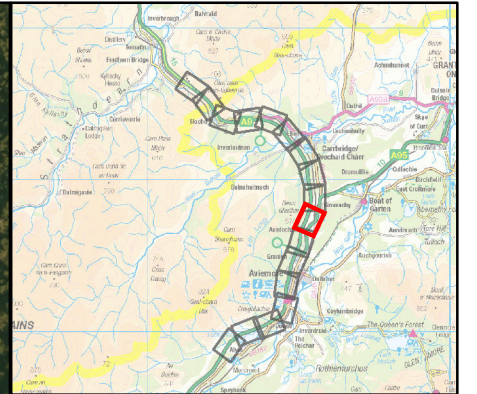
Proposed Underbridge

Granish Junction

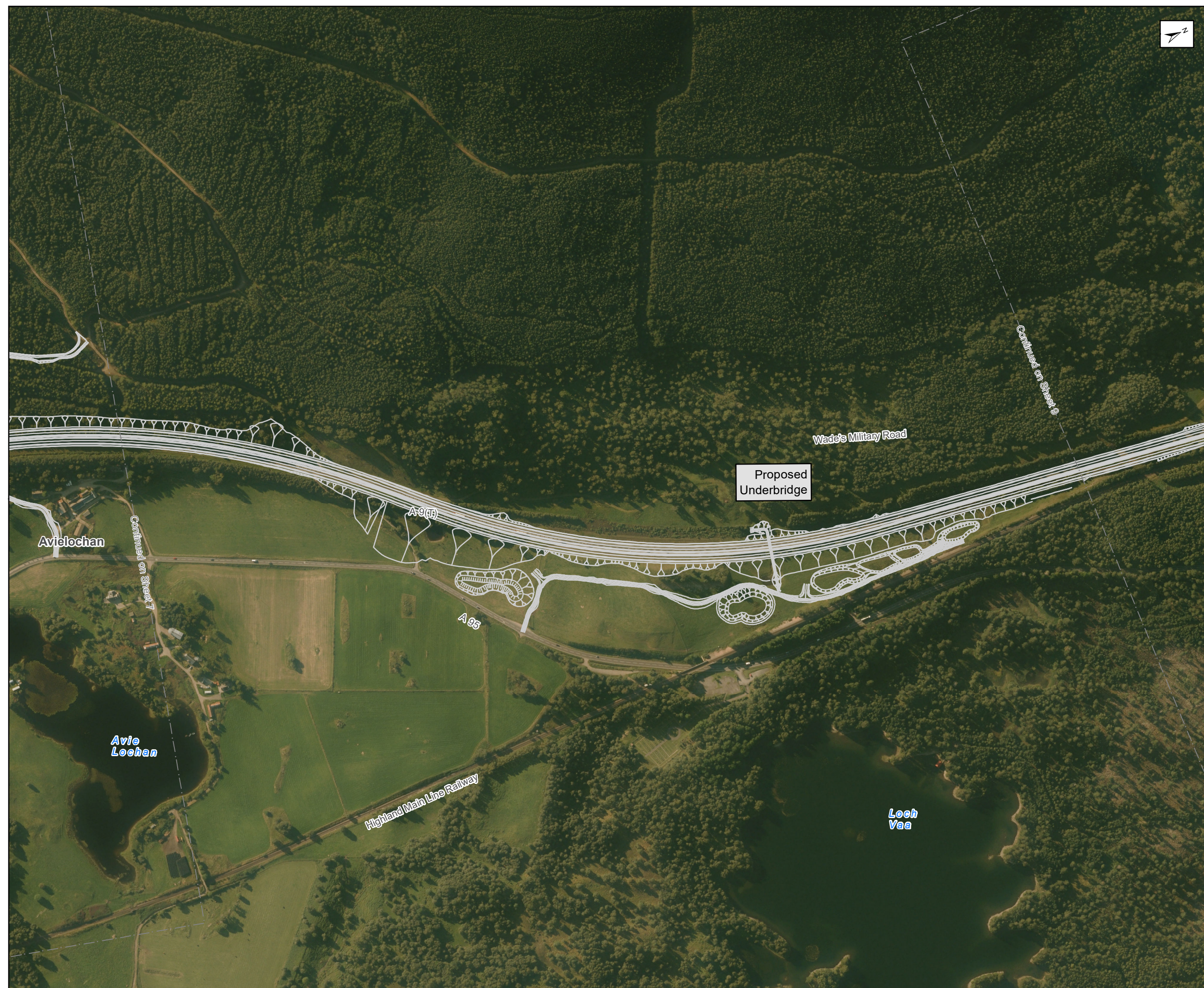
The design shown is under development as part of the ongoing Stage 3 Assessment design development.

Dalraddy to Slochd
Stage 3 Design
Sheet 7 of 17

Scale 1:5,000	Sheet Size A3
Kilometres	
	



-  DS Stage 3 Design
-  Planned Development with Consent
-  Potential Slope Area



The design shown is under development as part of the ongoing Stage 3 Assessment design development.

Dalraddy to Slochd
Stage 3 Design
Sheet 8 of 17

Scale 1:5,000	Sheet Size A3
