



Contractor



DRAGADOS | AMERICAN BRIDGE INTERNATIONAL
HOCHTIEF | MORRISON CONSTRUCTION

Project **FORTH REPLACEMENT CROSSING**

Document title

**AIR QUALITY MONITORING REPORT
OCTOBER 2017**

00	07/11/2017	First revision	SWR	TSW	TSW
Rev	Rev. Date	Purpose of revision	Made	Checked	Reviewed

Document status

FOR REVIEW

Made by Steven Westwater	Checked By: Tom Shaw
Initials: SWR	Initials: TSW
Document number REP-00348	Rev 00

This document is intellectual property of FCBC Construction JV. Copying, distribution, usage, and information on contents of this are forbidden unless explicitly authorized.



DRAGADOS | AMERICAN BRIDGE INTERNATIONAL
HOCHTIEF | MORRISON CONSTRUCTION

Distribution

Name	Email Address	Copy Sent (Y/N)



DRAGADOS | AMERICAN BRIDGE INTERNATIONAL
HOCHTIEF | MORRISON CONSTRUCTION

Contents

- 1. Introduction**
- 2. Monitoring Equipment and Locations**
- 3. Air Quality Monitoring Results**
 - 3.1. Automatic Light Scatter Meter Particulate Matter Monitoring Results**
 - 3.2. Total Suspended Particle Results**
 - 3.3. Frisbee Dust Deposition Results**
 - 3.4. Daily Dust Log and Weekly Environmental Inspections**

Appendices:

- Appendix A: Particulate Matter Results**
- Appendix B: Total Suspended Particle Results**
- Appendix C: Frisbee Dust Deposition Results**
- Appendix D: Daily Dust Log Summary**



DRAGADOS | AMERICAN BRIDGE INTERNATIONAL
HOCHTIEF | MORRISON CONSTRUCTION

1. INTRODUCTION

- 1.1.** Air quality monitoring is being undertaken by FCBC during the construction of the Forth Replacement Crossing and the associated road network. This report details the air quality monitoring that is currently being undertaken across the site and presents the monitoring results for October 2017.

- 1.2.** Air quality monitoring during this period has been undertaken in accordance with the Code of Construction Practice (CoCP) and the Dust and Air Quality Management Plan (DAQMP) contained within the Environmental Management Plan (EMP).

- 1.3.** The Queensferry Crossing opened to traffic at the end of August 2017. By October 2017 most construction activities had been completed. Therefore, the monitoring regime was reduced and a number of monitors removed.



DRAGADOS | AMERICAN BRIDGE INTERNATIONAL
HOCHTIEF | MORRISON CONSTRUCTION

2. MONITORING EQUIPMENT AND LOCATIONS

2.1. Air quality is being monitored on site using both automatic light scatter dust meters and Frisbee gauge dust deposition monitoring. Four Frisbee gauges are currently set up at sensitive locations across the site to measure dust deposition rates (Figure 1). Seven automatic light scatter meters are installed at various sensitive locations to measure real time particulate matter (PM₁₀) concentrations and the Total Suspended Particle (TSP) concentrations (Figure 2). These meters are calibrated annually. Table 1 lists the air quality monitoring equipment present at each monitoring location, including the date it was installed.

2.2. Light scatter type monitoring equipment have been selected as a site monitoring tool to create a live network which assesses the levels of fugitive particulate matter, principally airborne dust. These monitors require less space, maintenance and power than other real time monitors such as a Tapered Element Oscillating Microbalance (TEOM) which is used and designed to measure particulate levels to exceedingly high standards, including measuring long-term compliance to statutory limits. Light scatter meters are more practicable to deploy. However, the meters do generally record levels higher than those measured by the TEOM. The meters can also be affected by atmospheric moisture content which further increases reported levels. Accordingly, any elevations of statutory limits should be treated as precautionary exceedances. The monitors are reliable for on-site monitoring and the establishment of action thresholds to ensure unforeseen activities generating significant dust are identified and suitably controlled. Light scatter meters are becoming the construction and waste industries norm for particulate dust monitoring.

2.3. In association with air quality monitoring across the site, temperature and relative humidity are also continually measured by the light scatter meters at Inchgarvie Lodge and Clufflat Brae. Weather stations, located at the sound level meters at Linn Mill and Whinnyhill (these are adjacent to the light scatter

meters at these monitoring locations), record weather data including; temperature, relative humidity, wind speed and wind direction.

2.4. Frequent environmental site inspections are also undertaken by members of the FCBC Environmental Department. These inspections include a dust check to assess the following:

- dust levels on site;
- suppression/dampening down; and
- transportation of materials.



Figure 1: Example of an Installed Frisbee Gauge Meter



Figure 2: Example of an installed Automatic Light Scatter Dust Meter



DRAGADOS | AMERICAN BRIDGE INTERNATIONAL
HOCHTIEF | MORRISON CONSTRUCTION

Table 1: Air Quality Monitoring Locations

Ref:	Monitoring Location	Monitoring Equipment	Installation Date	Construction Activities in October
M1	Whinny Hill	Automatic light scatter meter	16/02/12	<ul style="list-style-type: none"> Ferrytoll gyratory slip road works
M10	Inchgarvie Lodge	Frisbee	22/08/11	<ul style="list-style-type: none"> South abutment works Internal Bridge Works
		Automatic light scatter meter	17/10/11	
M11	Linn Mill	Frisbee	22/08/11	<ul style="list-style-type: none"> South abutment works Internal Bridge Works
		Automatic light scatter meter	06/12/11	
M12	Clufflat	Frisbee	29/08/11	<ul style="list-style-type: none"> South abutment works Internal Bridge Works
M13	Clufflat Brae	Frisbee	21/09/11	
		Automatic light scatter meter	24/10/11	
M15	Echline	Automatic light scatter meter	10/11/11	<ul style="list-style-type: none"> No Works
M16	Scotstoun	Automatic light scatter meter	14/02/12	<ul style="list-style-type: none"> Works on south- bound emergency link
M17	Dundas Home Farm	Automatic light scatter meter	23/02/12	<ul style="list-style-type: none"> No Works
M18	Newton	TEOM	23/05/12	<ul style="list-style-type: none"> None



DRAGADOS | AMERICAN BRIDGE INTERNATIONAL
HOCHTIEF | MORRISON CONSTRUCTION

3. AIR QUALITY MONITORING RESULTS

3.1. Automatic Light Scatter Dust Meter Monitoring Results

3.1.1. Light scatter meter results for October 2017 have been presented in a monthly chart; this can be found in Appendix A. Results for the month are generally low and all are below the action level. PM_{10} levels generally follow a similar pattern throughout the month with the exception of a higher result recorded at Scotstoun on the 3rd October. At the time of this higher result the only FCBC work in this area was being undertaken on the South Emergency Link. It should be noted that another construction site (not FRC project related) is located closer to the monitor.

3.1.2. The PM_{10} results have also been compared to the daily mean results obtained from the TEOM air quality monitoring stations located in Newton, Rosyth, and Broxburn, and from the TEOM FDMS station located at Queensferry Road and St Leonards, Edinburgh (an urban background site). The TEOM at Newton was installed by West Lothian Council, facilitated by FCBC, during January 2012. The comparison between the light scatter and TEOM results demonstrates that both sets of results generally follow the same pattern throughout the month, with the exception of the result recorded at Scotstoun on 3rd October.

3.2. Total Suspended Particles

3.2.1. The TSP results for October 2017 have been presented in a monthly chart; this can be found in Appendix B. The TSP levels at monitoring locations during October were found to be generally low and all results were within the threshold level. All locations across the site were found to follow a similar pattern to that observed for PM_{10} levels, as described in 3.1.1.



DRAGADOS | AMERICAN BRIDGE INTERNATIONAL
HOCHTIEF | MORRISON CONSTRUCTION

3.3. Frisbee Dust Deposition Results

- 3.3.1.** The Frisbee dust deposition results for October 2017 have been presented in a chart and can be found in Appendix C. Two collections were made in October; these occurred on the 11th and 25th October 2017.
- 3.3.2.** The site action level for the dust deposition rate has been set at 250 mg/m²/day. Exceedances of this level are treated as a potential incident and a review of the works in the vicinity of the site is instigated. A lower site review level has been set at 140 mg/m²/day. Where concentrations exceed the lower review threshold the site works are reviewed to ensure good practice is implemented; it is essentially a warning that additional controls may be required.
- 3.3.3.** During May there were no exceedances of either the site review or action levels.

3.4. Daily Dust Log and Environmental Inspections

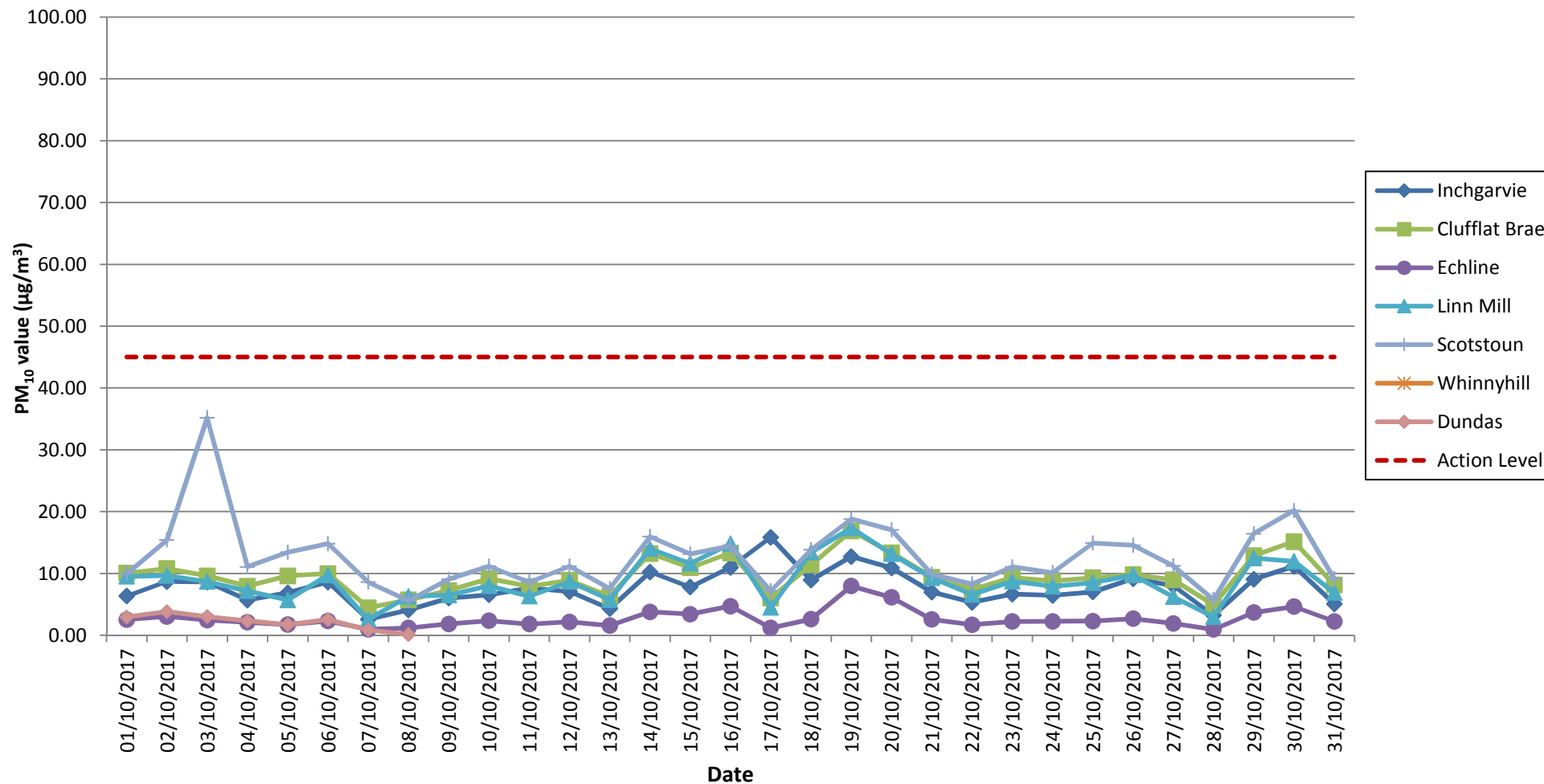
- 3.4.1.** A summary of the daily dust log for October can be found in Appendix D.
- 3.4.2.** During this period, full environmental inspections were also undertaken across the site and covered areas where works were being carried out.



DRAGADOS | AMERICAN BRIDGE INTERNATIONAL
HOCHTIEF | MORRISON CONSTRUCTION

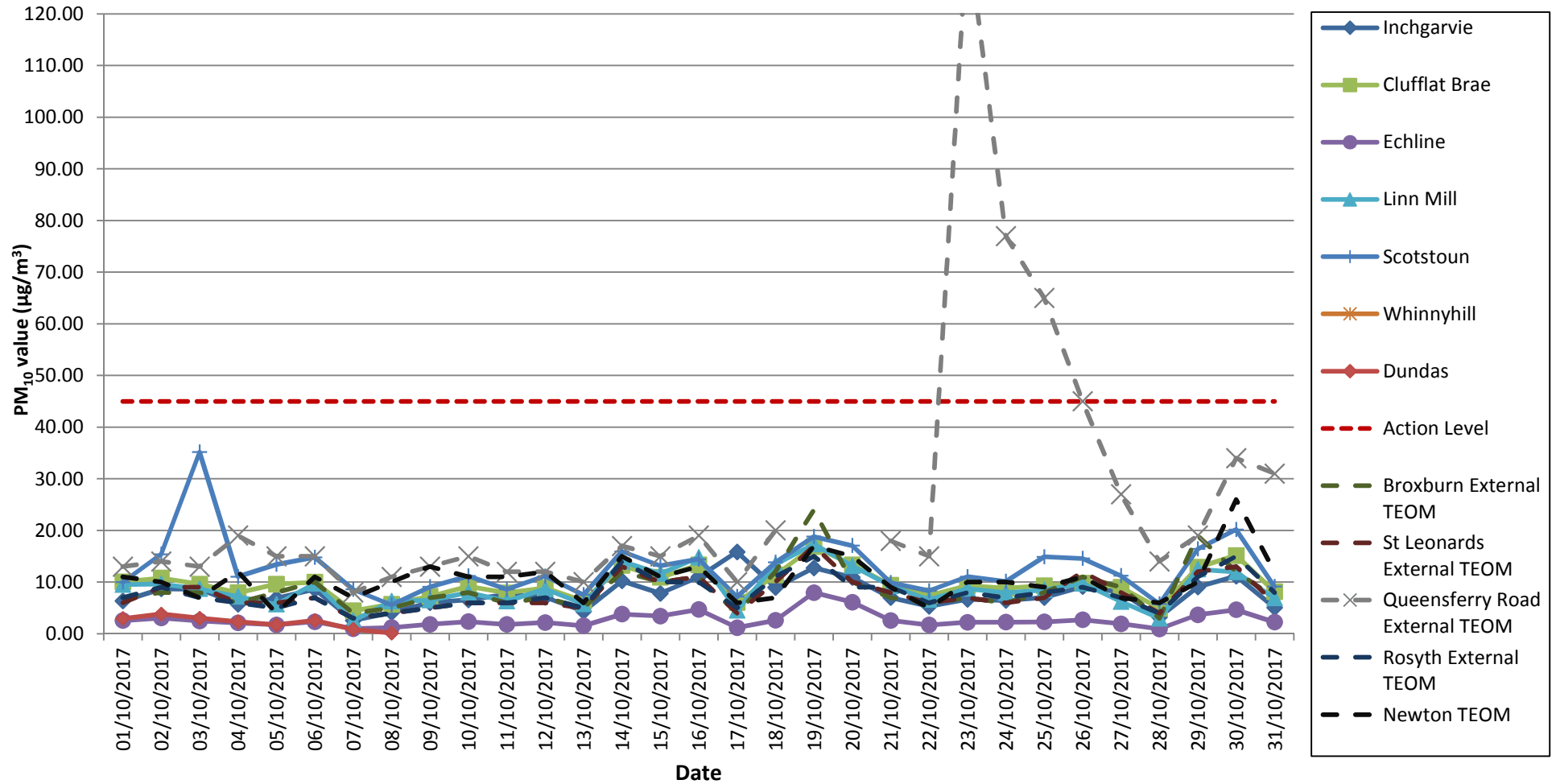
APPENDIX A: LIGHT SCATTER METER RESULTS

Air Quality Monitoring Particulate Matter (PM10) Results for all Monitoring Locations October 2017



Note: There is no data at the Whinnyhill monitor due to an electrical problem with the monitor. There was no data between the 9/10/2017 and 31/10/2017 at Dundas due to an electrical fault with the monitor

Air Quality Monitoring: Particulate Matter (PM10) Results for all Monitoring Locations, including TEOM data October 2017



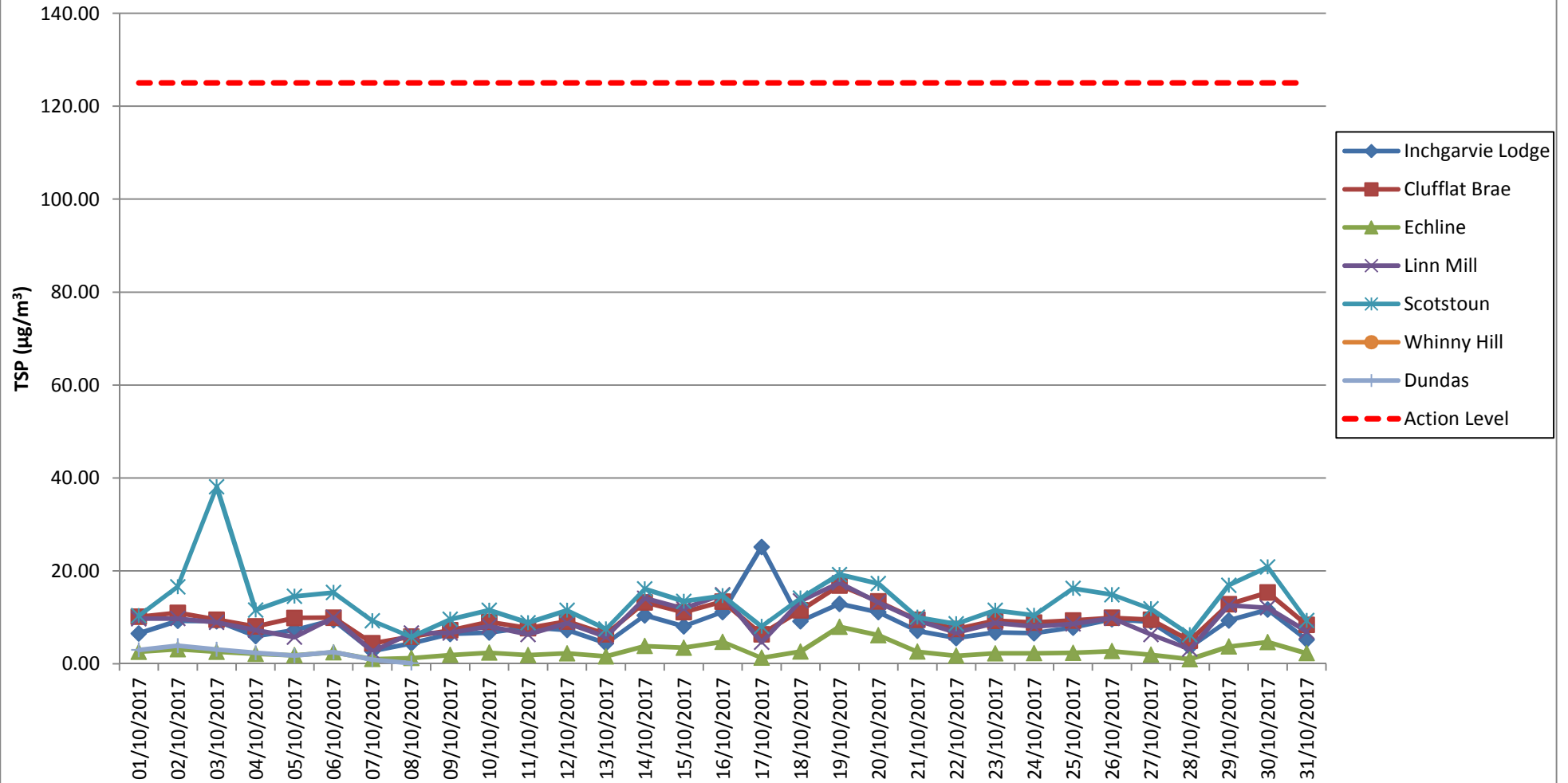
Note: There is no data at the Whinnyhill monitor due to an electrical problem with the monitor. There was no data between the 9/10/2017 and 31/10/2017 at Dundas due to an electrical fault with the monitor



DRAGADOS | AMERICAN BRIDGE INTERNATIONAL
HOCHTIEF | MORRISON CONSTRUCTION

APPENDIX B: TOTAL SUSPENDED PARTICLES

Total Suspended Particles (TSP) Results October 2017



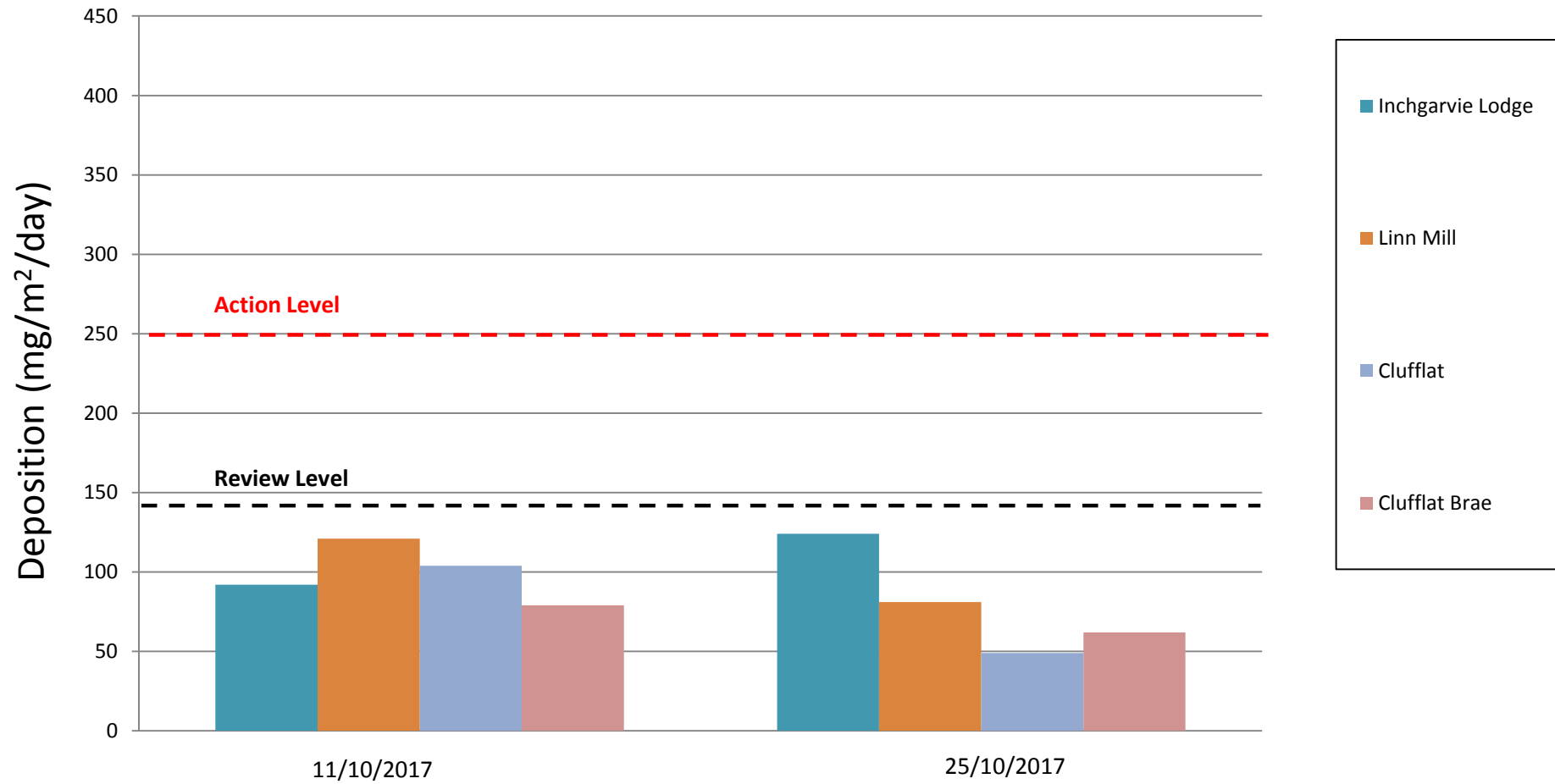
Note: There is no data at the Whinnyhill monitor due to an electrical problem with the monitor. There was no data between the 09/10/2017 and 31/10/2017 at Dundas due to an electrical fault with the monitor



DRAGADOS | AMERICAN BRIDGE INTERNATIONAL
HOCHTIEF | MORRISON CONSTRUCTION

APPENDIX C: FRISBEE GAUGE RESULTS

Frisbee Dust Deposition Results: October 2017





DRAGADOS | AMERICAN BRIDGE INTERNATIONAL
HOCHTIEF | MORRISON CONSTRUCTION

APPENDIX D: DAILY DUST LOG

Daily Dust Log - North - October 2017

DATE	LOCATION	WIND	WIND DIRECTION	GROUND SURFACE	VISIBLE DUST	DUST DUE TO WORKS (if applicable)	CAUSES OF DUST (if applicable)	COMMENTS AND ACTIONS
01/10/2017								
02/10/2017	N	LIGHT	SE	DRY	N			
03/10/2017	N	LIGHT	SE	DRY	N			
04/10/2017	N	LIGHT	S	WET	N			
05/10/2017	N	LIGHT	W	DRY	N			
06/10/2017	N	LIGHT	S	DRY	N			
07/10/2017								
08/10/2017								
09/10/2017	N	LIGHT	SE	DRY	N			
10/10/2017	N	LIGHT	SE	WET	N			
11/10/2017	N	LIGHT	SE	WET	N			
12/10/2017	N	LIGHT	S	DAMP	N			
13/10/2017	N	LIGHT	E	WET	N			
14/10/2017								
15/10/2017								
16/10/2017	N	LIGHT	S	WET	N			
17/10/2017	N	LIGHT	SE	DAMP	N			
18/10/2017	N	LIGHT	W	DRY	N			
19/10/2017	N	LIGHT	W	WET	N			
20/10/2017	N	LIGHT	SE	DAMP	N			
21/10/2017								
22/10/2017								
23/10/2017	N	LIGHT	SE	DAMP	N			
24/10/2017	N	LIGHT	E	DRY	N			
25/10/2017	N	LIGHT	SE	DAMP	N			
26/10/2017	N	LIGHT	E	DRY	N			
27/10/2017	N	LIGHT	SE	DRY	N			
28/10/2017								
29/10/2017								
30/10/2017	N	LIGHT	E	DRY	N			
31/10/2017	N	LIGHT	E	WET	N			

Daily Dust Log - South - October 2017

DATE	LOCATION	WIND	WIND DIRECTION	GROUND SURFACE	VISIBLE DUST	DUST DUE TO WORKS (if applicable)	CAUSES OF DUST (if applicable)	COMMENTS AND ACTIONS
01/10/2017								
02/10/2017	S	LIGHT	SE	DRY	N			
03/10/2017	S	LIGHT	SE	DRY	N			
04/10/2017	S	LIGHT	S	WET	N			
05/10/2017	S	LIGHT	S	DRY	N			
06/10/2017	S	LIGHT	SE	DRY	N			
07/10/2017								
08/10/2017								
09/10/2017	S	LIGHT	SE	DRY	N			
10/10/2017	S	LIGHT	SE	WET	N			
11/10/2017	S	LIGHT	SE	WET	N			
12/10/2017	S	LIGHT	E	DAMP	N			
13/10/2017	S	LIGHT	E	WET	N			
14/10/2017								
15/10/2017								
16/10/2017	S	LIGHT	S	WET	N			
17/10/2017	S	LIGHT	SE	DAMP	N			
18/10/2017	S	LIGHT	W	DRY	N			
19/10/2017	S	LIGHT	W	WET	N			
20/10/2017	S	LIGHT	SE	DAMP	N			
21/10/2017								
22/10/2017								
23/10/2017	S	LIGHT	SE	DAMP	N			
24/10/2017	S	LIGHT	E	DRY	N			
25/10/2017	S	LIGHT	SE	DAMP	N			
26/10/2017	S	LIGHT	SE	DRY	N			
27/10/2017	S	LIGHT	SE	DRY	N			
28/10/2017								
29/10/2017								
30/10/2017	S	LIGHT	E	DRY	N			
31/10/2017	S	LIGHT	E	WET	N			