

- Legend**
- Proposed scheme (DMRB Stage 3 design)
  - SuDS
  - 150m Study area
- Birds of Conservation Concern (BoCC) Status**
- Red
  - Amber
  - Green

|      |           |                     |          |        |       |         |
|------|-----------|---------------------|----------|--------|-------|---------|
| 0    | DEC 2017  | ES Publication      | JCr      | KH     | PG    | AJG     |
| Rev. | Rev. Date | Purpose of revision | Orig/Dwn | Checkd | Rev'd | Apprv'd |

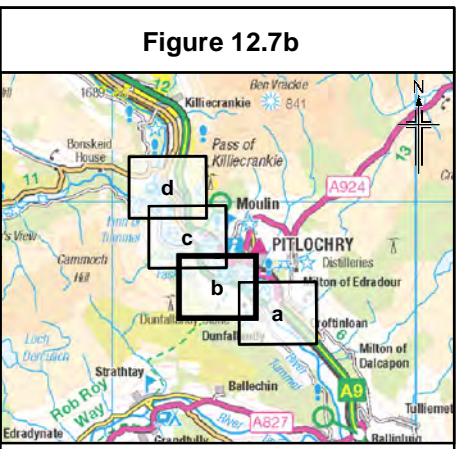
**JACOBS**  
 95 Bothwell Street, Glasgow, G2 7HX, UK.  
 Tel: +44(0) 141 243 8000  
 www.jacobs.com

Client  
  
 TRANSPORT SCOTLAND  
 CÙRRAIDH ALBA

Project  
  
**A9**  
 DUALLING  
 PERTH TO INVERNESS  
 Pitlochry to Killiecrankie

Drawing title  
**Environmental Statement  
 Breeding Birds Survey Results**

|                |                     |              |
|----------------|---------------------|--------------|
| Drawing Status | FINAL               | Sheet 1 of 4 |
| Scale          | 1:7,500 @ A3        | DO NOT SCALE |
| Jacobs No.     | B2140004            |              |
| BIM No.        |                     |              |
| Drawing number | <b>Figure 12.7a</b> | Rev <b>0</b> |



- Legend**
- Proposed scheme (DMRB Stage 3 design)
  - SuDS
  - 150m Study area
- Birds of Conservation Concern (BoCC) Status**
- Red
  - Amber
  - Green

|      |           |                     |          |         |       |        |
|------|-----------|---------------------|----------|---------|-------|--------|
| 0    | DEC 2017  | ES Publication      | JCr      | KH      | PG    | AJG    |
| Rev. | Rev. Date | Purpose of revision | Orig/Dwn | Check'd | Rev'd | Appr'd |

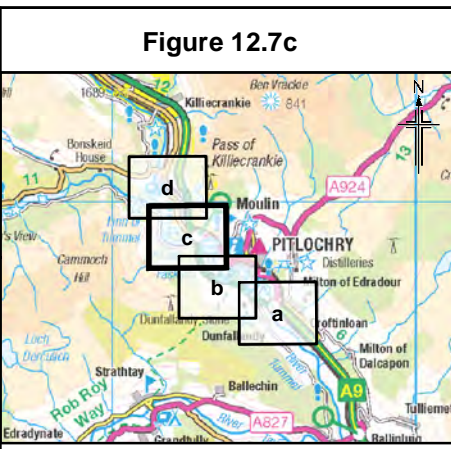
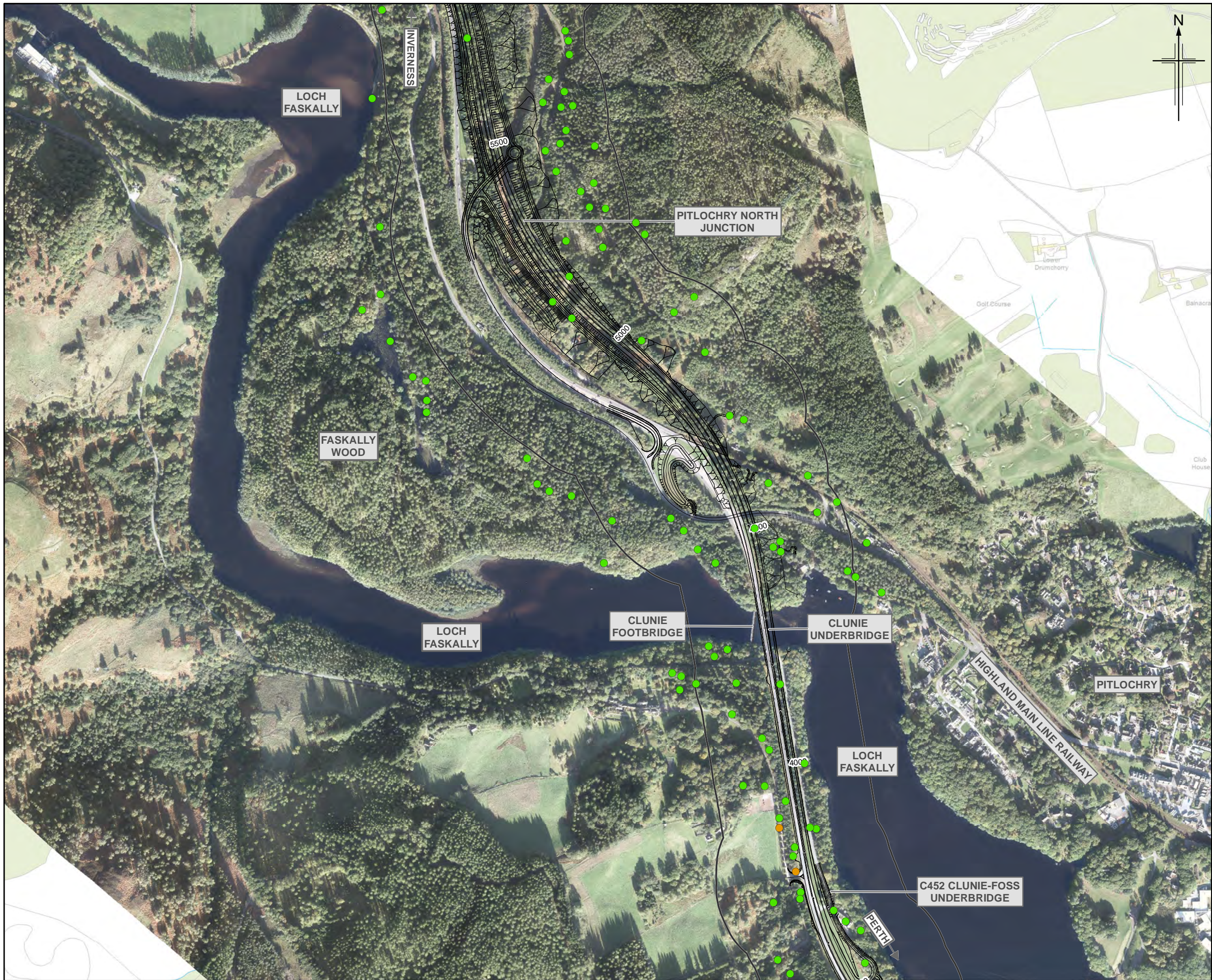
**JACOBS**  
 95 Botwell Street, Glasgow, G2 7HX, UK.  
 Tel: +44(0) 141 243 8000  
 www.jacobs.com

Client  
  
 TRANSPORT SCOTLAND  
 CO-RRISDAL ALBA

Project  
  
**A9 DUALLING**  
 PERTH TO INVERNESS  
 Pitlochry to Killiecrankie

Drawing title  
**Environmental Statement  
 Breeding Birds Survey Results**

|                |                     |      |              |
|----------------|---------------------|------|--------------|
| Drawing Status | FINAL               |      |              |
| Scale          | 1:7,500             | @ A3 | DO NOT SCALE |
| Jacobs No.     | B2140004            |      |              |
| BIM No.        |                     |      |              |
| Drawing number | <b>Figure 12.7b</b> |      | Rev <b>0</b> |



**Legend**

- Proposed scheme (DMRB Stage 3 design)
- SuDS
- 150m Study area

**Birds of Conservation Concern (BoCC) Status**

- Red
- Amber
- Green

|      |           |                     |          |        |       |         |
|------|-----------|---------------------|----------|--------|-------|---------|
| 0    | DEC 2017  | ES Publication      | JCr      | KH     | PG    | AJG     |
| Rev. | Rev. Date | Purpose of revision | Orig/Dwn | Checkd | Rev'd | Apprv'd |

**JACOBS**  
95 Botwell Street, Glasgow, G2 7HX, UK.  
Tel: +44(0) 141 243 8000  
www.jacobs.com

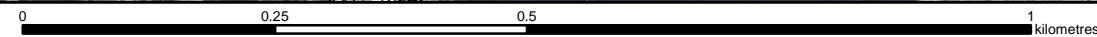
Client  
**TRANSPORT SCOTLAND**  
CORPORAL ALBA

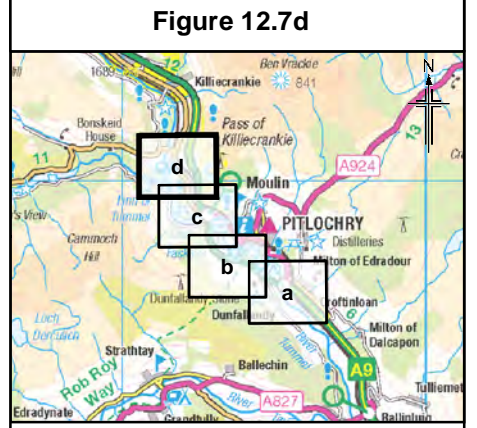
Project  
**A9 DUALLING**  
PERTH TO INVERNESS  
Pitlochry to Killiecrankie

Drawing title  
**Environmental Statement  
Breeding Birds Survey Results**

|                |              |              |
|----------------|--------------|--------------|
| Drawing Status | FINAL        | Sheet 3 of 4 |
| Scale          | 1:7,500 @ A3 | DO NOT SCALE |
| Jacobs No.     | B2140004     |              |
| BIM No.        |              |              |
| Drawing number | Figure 12.7c | Rev 0        |

This drawing is not to be used in whole or part other than for the intended purpose and project as defined on this drawing. Refer to the contract for full terms and conditions.





- Legend**
- Proposed scheme (DMRB Stage 3 design)
  - SuDS
  - 150m Study area
- Birds of Conservation Concern (BoCC) Status**
- Red
  - Amber
  - Green

| Rev. | Rev. Date | Purpose of revision | Orig/Dwn | Check'd | Rev'd | Apprv'd |
|------|-----------|---------------------|----------|---------|-------|---------|
| 0    | DEC 2017  | ES Publication      | JCr      | KH      | PG    | AJG     |

**JACOBS**  
 95 Botwell Street, Glasgow, G2 7HX, UK.  
 Tel: +44(0) 141 243 8000  
 www.jacobs.com

Client  
  
 TRANSPORT SCOTLAND  
 CORPHOHAL ALBA

Project  
  
**A9**  
 DUALLING  
 PERTH TO INVERNESS  
 Pitlochry to Killiecrankie

Drawing title  
**Environmental Statement  
 Breeding Birds Survey Results**

|                |                     |      |                 |
|----------------|---------------------|------|-----------------|
| Drawing Status | FINAL               |      |                 |
| Scale          | 1:7,500             | @ A3 | DO NOT SCALE    |
| Jacobs No.     | B2140004            |      |                 |
| BIM No.        |                     |      |                 |
| Drawing number | <b>Figure 12.7d</b> |      | Rev<br><b>0</b> |

This drawing is not to be used in whole or part other than for the intended purpose and project as defined on this drawing. Refer to the contract for full terms and conditions.

