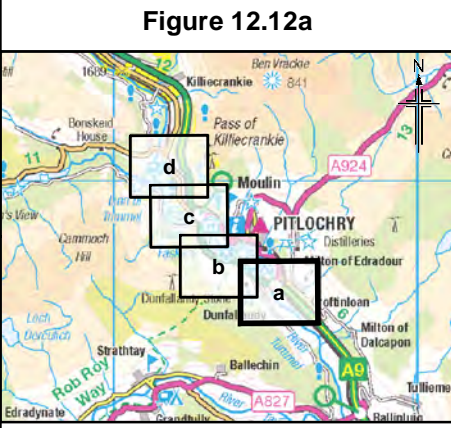


River Tummel (WF70A)			
Fish *	Salmon	Eel	Trout
	Brook lamprey	River lamprey	Sea lamprey
Macroinvertebrates	APRIL		NOVEMBER
	Moderate		Not surveyed for safety reasons
	Moderate		
n/a			

WF64			
Fish *	Salmon	Eel	Trout
	Brook lamprey	River lamprey	Sea lamprey
Macroinvertebrates	APRIL		NOVEMBER
	High		Good
	Fairly High		High
n/a		<i>Protonemura meyeri</i>	



- Legend**
- Proposed scheme (DMRB Stage 3 design)
 - SuDS
 - 250m Study area
 - Macroinvertebrate Survey Sample Point
- Freshwater Aquatic Habitat Quality**
- Excellent
 - Good
 - Moderate
 - Poor

Fish*	Salmon		Eel		Trout	
	Brook lamprey	River lamprey	River lamprey	Sea lamprey	Sea lamprey	Sea lamprey
Macro-invertebrates	APRIL		NOVEMBER			
	WFD Classification**		WFD Classification**			
	CCI Conservation Value**		CCI Conservation Value**			
	Species (CCI CS z6)***		Species (CCI CS z6)***			

WFD Classification**	Bad/Poor	Moderate	Good/High
CCI Conservation Value**	Low	Moderate	Fairly High/High

* Information on fish presence is from Tay DSFB and notes on habitat and accessibility from aquatic walkover surveys. Species name shaded if expected to be present.

** WFD = Water Framework Directive
CCI = Community Conservation Index

*** Species of Conservation Interest (see ES Ch.12 for details)

n/a = not applicable
n/c = none collected

B	DEC 2017	ES Publication	KA	NW	PG	AJG
Rev.	Rev. Date	Purpose of revision	Orig/Dwn	Checkd	Rev'd	Apprv'd

JACOBS
95 Bothwell Street, Glasgow, G2 7HX, UK.
Tel: +44(0)141 243 8000
www.jacobs.com

Client: **TRANSPORT SCOTLAND**
CORPORATE ALBA

Project: **A9 DUALLING**
PERTH TO INVERNESS
Pitlochry to Killiecrankie

Drawing title: **Environmental Statement Aquatic Survey Results**

Sheet 1 of 4

Drawing Status	FINAL		
Scale	1:7,500	@ A3	DO NOT SCALE
Jacobs No.	B2140004		
BIM No.			
Drawing number	Figure 12.12a		Rev 0

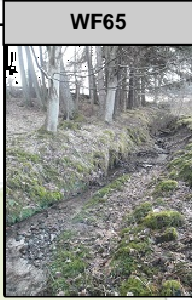
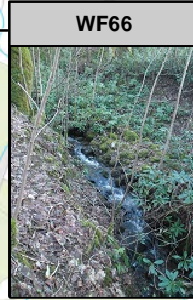
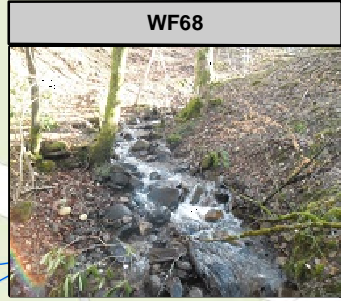
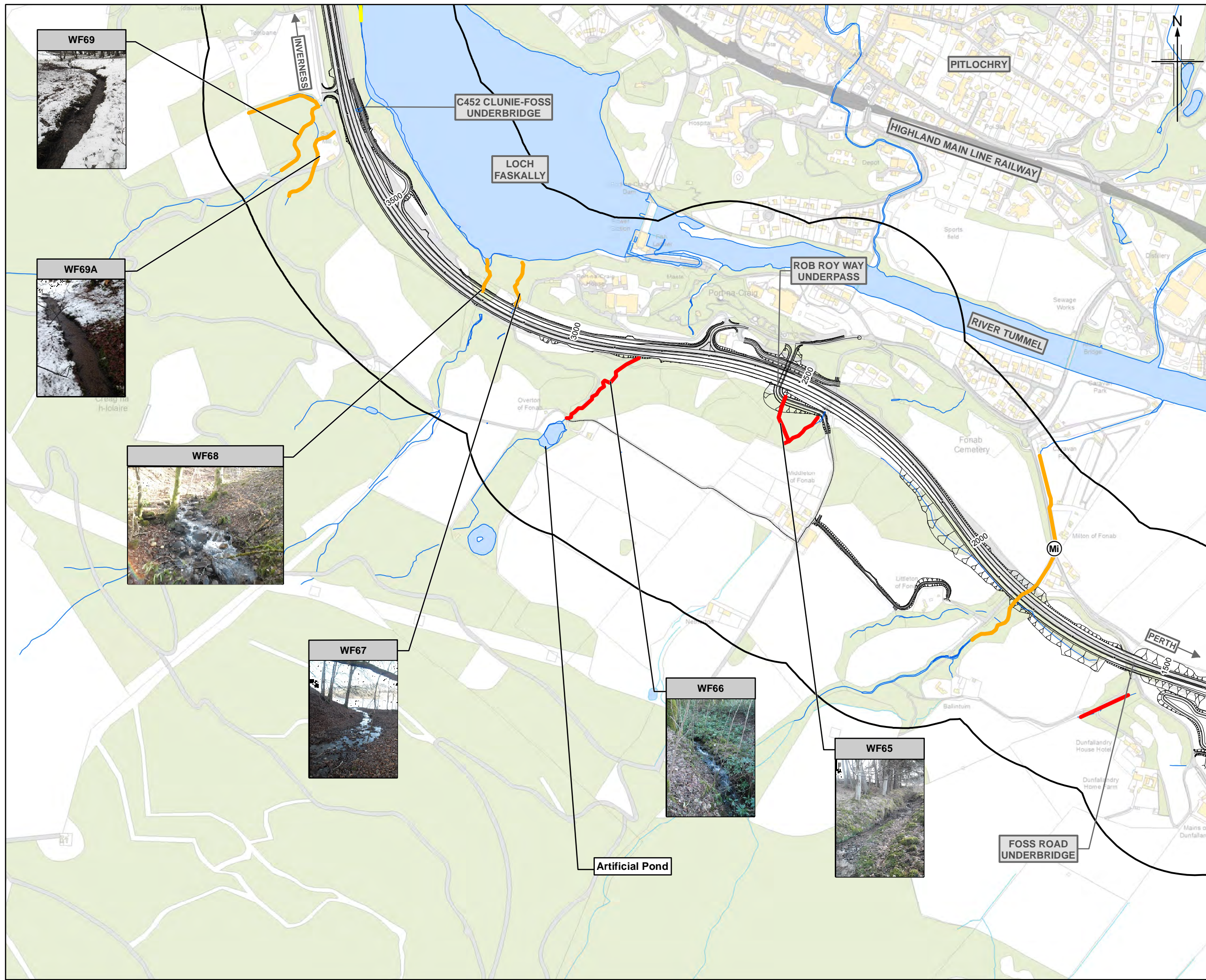
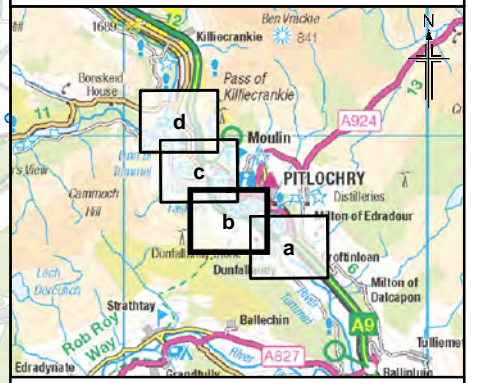


Figure 12.12b



- Legend**
- Proposed scheme (DMRB Stage 3 design)
 - SuDS
 - 250m Study area
 - Macroinvertebrate Survey Sample Point
- Freshwater Aquatic Habitat Quality**
- Excellent
 - Good
 - Moderate
 - Poor

Fish*	Surface Water Feature Name		
	Salmon	Eel	Trout
	Brook lamprey	River lamprey	Sea lamprey
	APRIL	NOVEMBER	
Macro-invertebrates	WFD Classification**		WFD Classification**
	CCI Conservation Value**		CCI Conservation Value**
	Species (CCI CS z6)***		Species (CCI CS z6)***

WFD Classification**	Bad/Poor	Moderate	Good/High
CCI Conservation Value**	Low	Moderate	Fairly High/High

* Information on fish presence is from Tay DSFB and notes on habitat and accessibility from aquatic walkover surveys. Species name shaded if expected to be present.

** WFD = Water Framework Directive
CCI = Community Conservation Index

*** Species of Conservation Interest (see ES Ch. 12 for details)

n/a = not applicable
n/c = none collected

Rev.	Rev. Date	Purpose of revision	Orig/Dwn	Check'd	Rev'd	Apprv'd
B	DEC 2017	ES Publication	KA	NW	PG	AJG

JACOBS
95 Bothwell Street, Glasgow, G2 7HX, UK
Tel: +44(0)141 243 8000
www.jacobs.com

Client
TRANSPORT SCOTLAND
CORPORATE ALBA

Project
A9 DUALLING
PERTH TO INVERNESS
Pitlochry to Killiecrankie

Drawing title
Environmental Statement
Aquatic Survey Results

Sheet 2 of 4

Drawing Status	FINAL		
Scale	1:7,500	@ A3	DO NOT SCALE
Jacobs No.	B2140004		
BIM No.			
Drawing number	Figure 12.12b		Rev 0

This drawing is not to be used in whole or part other than for the intended purpose and project as defined on this drawing. Refer to the contract for full terms and conditions.

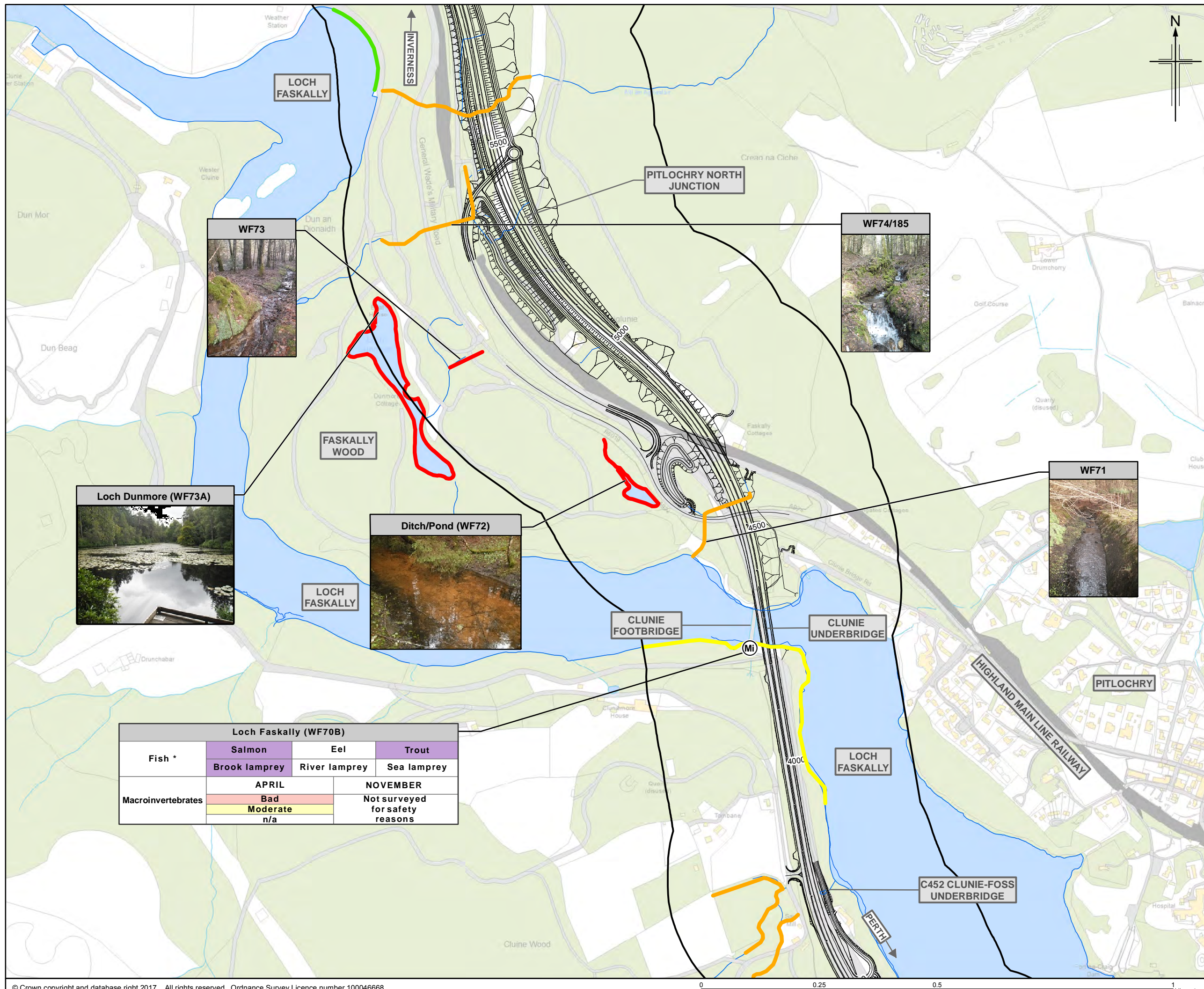
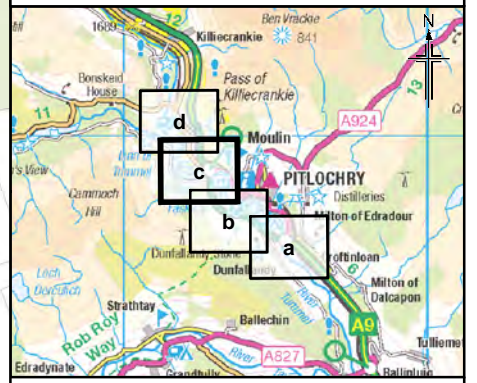


Figure 12.12c



- Legend**
- Proposed scheme (DMRB Stage 3 design)
 - SuDS
 - 250m Study area
 - Macroinvertebrate Survey Sample Point (Mi)
- Freshwater Aquatic Habitat Quality**
- Excellent (Green)
 - Good (Yellow)
 - Moderate (Orange)
 - Poor (Red)

Fish*	Surface Water Feature Name		
	Salmon	Eel	Trout
	Brook lamprey	River lamprey	Sea lamprey
Macro-invertebrates	APRIL		NOVEMBER
	WFD Classification**		WFD Classification**
	CCI Conservation Value**		CCI Conservation Value**
	Species (CCI CS z6)***		Species (CCI CS z6)***

WFD Classification**	Bad/Poor	Moderate	Good/High
CCI Conservation Value**	Low	Moderate	Fairly High/High

* Information on fish presence is from Tay DSFB and notes on habitat and accessibility from aquatic walkover surveys. Species name shaded if expected to be present.

** WFD = Water Framework Directive
CCI = Community Conservation Index

*** Species of Conservation Interest (see ES Ch. 12 for details)

n/a = not applicable
n/c = none collected

Rev.	Rev. Date	Purpose of revision	Orig/Dwn	Check'd	Rev'd	Apprv'd
B	DEC 2017	ES Publication	KA	NW	PG	AJG

JACOBS
95 Bothwell Street, Glasgow, G2 7HX, UK.
Tel: +44(0)141 243 8000
www.jacobs.com

Client
TRANSPORT SCOTLAND
CORRIGAL ALBA

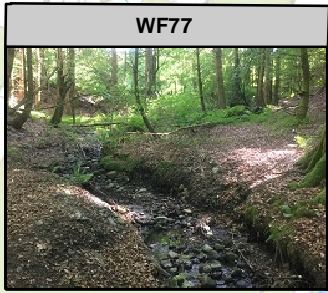
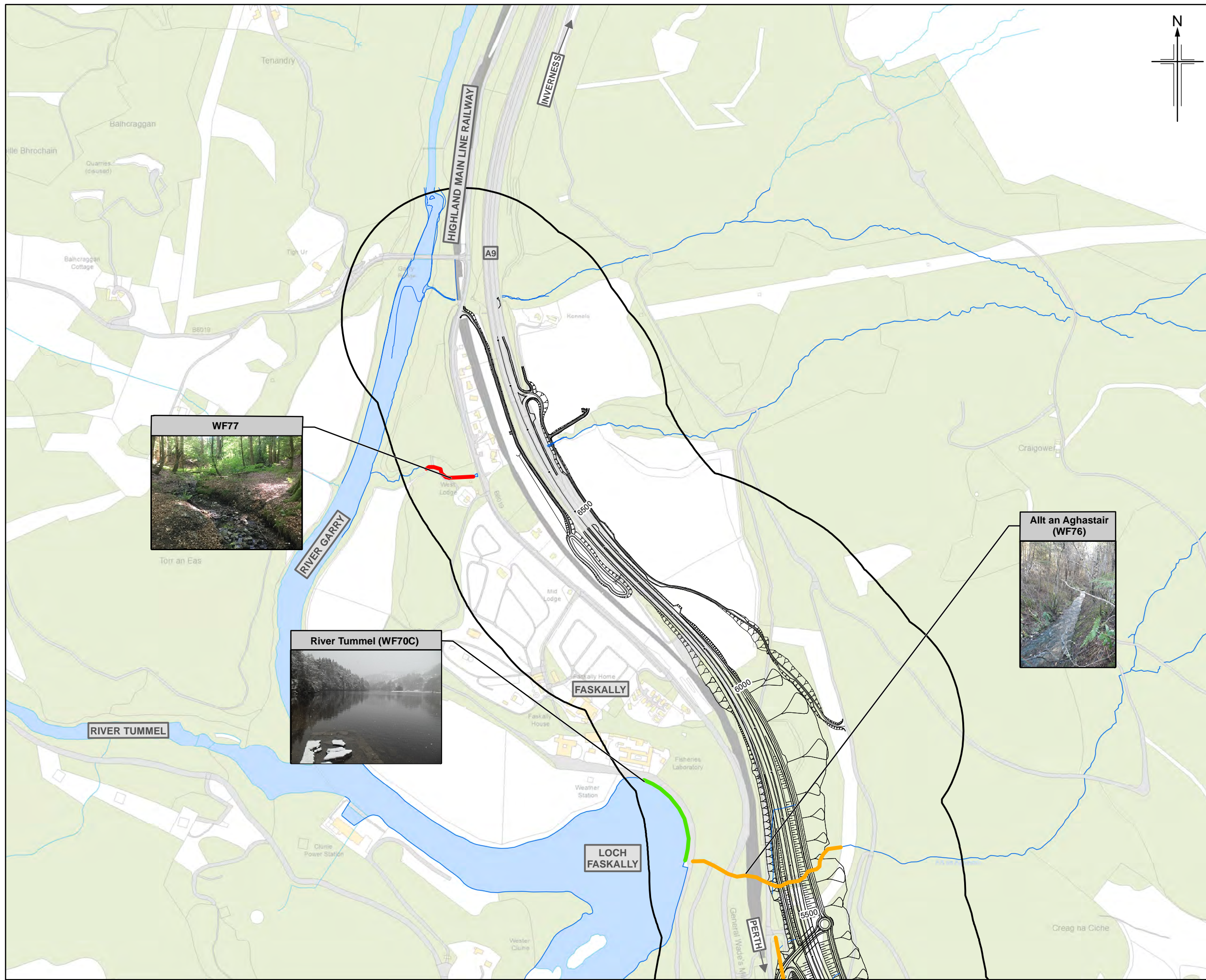
Project
A9 DUALLING
PERTH TO INVERNESS
Pitlochry to Killiecrankie

Drawing title
Environmental Statement
Aquatic Survey Results

Drawing Status	Scale	Jacobs No.	BIM No.	Drawing number	Rev
FINAL	1:7,500 @ A3	B2140004		Figure 12.12c	0

This drawing is not to be used in whole or part other than for the intended purpose and project as defined on this drawing. Refer to the contract for full terms and conditions.

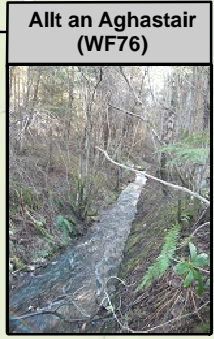
Loch Faskally (WF70B)			
Fish *	Salmon	Eel	Trout
	Brook lamprey	River lamprey	Sea lamprey
Macroinvertebrates	APRIL		NOVEMBER
	Bad		Not surveyed for safety reasons
	Moderate		
	n/a		



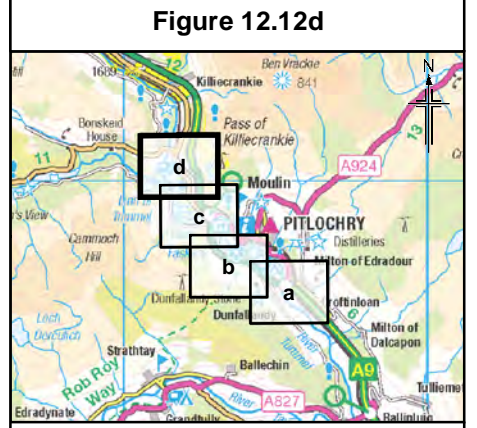
WF77



River Tummel (WF70C)



Allt an Aghastair (WF76)



- Legend**
- Proposed scheme (DMRB Stage 3 design)
 - SuDS
 - 250m Study area
 - Macroinvertebrate Survey Sample Point
- Freshwater Aquatic Habitat Quality**
- Excellent
 - Good
 - Moderate
 - Poor

Fish*	Surface Water Feature Name		
	Salmon	Eel	Trout
	Brook lamprey	River lamprey	Sea lamprey
	APRIL	NOVEMBER	
Macro-invertebrates	WFD Classification**	WFD Classification**	
	CCI Conservation Value**	CCI Conservation Value**	
	Species (CCI CS z6)***	Species (CCI CS z6)***	

WFD Classification**	Bad/Poor	Moderate	Good/High
CCI Conservation Value**	Low	Moderate	Fairly High/High

* Information on fish presence is from Tay DSFB and notes on habitat and accessibility from aquatic walkover surveys. Species name shaded if expected to be present.

** WFD = Water Framework Directive
CCI = Community Conservation Index

*** Species of Conservation Interest (see ES Ch.12 for details)

n/a = not applicable
n/c = none collected

Rev.	Rev. Date	Purpose of revision	Orig/Dwn	Check'd	Rev'd	Apprv'd
B	DEC 2017	ES Publication				

JACOBS
95 Bothwell Street, Glasgow, G2 7HX, UK.
Tel: +44(0)141 243 8000
www.jacobs.com

Client: **TRANSPORT SCOTLAND**
CORPORATE ALBA

Project: **A9 DUALLING**
PERTH TO INVERNESS
Pitlochry to Killin

Drawing title: **Environmental Statement Aquatic Survey Results**

Sheet 4 of 4

Drawing Status	FINAL
Scale	1:7,500 @ A3 DO NOT SCALE
Jacobs No.	B2140004
BIM No.	
Drawing number	Figure 12.12d
Rev	0