

Legend

- Proposed scheme (DMRB Stage 3 design)
- SuDS Retention Pond

Outdoor Receptors

- Core path
- NMU route
- National Cycle Route
- Railway line
- Road
- Recreation

a) Receptor number
 b) Impact Winter Year of Opening
 c) Impact Summer 15 Years

Visual Impact

- Negligible
- Negligible/Slight
- Slight
- Slight/Moderate
- Moderate
- Moderate/Substantial
- Substantial

Indicative signage

- ADS sign
- Route confirmation sign
- Tourist sign
- VMS sign
- Other large sign

Zone of Theoretical Visibility (ZTV) *

- Visibility at target points along the proposed scheme

* Note:
 The height from alignment was set at 30m and viewer height was 1.75m. The ZTV calculation only takes account of landform and does not take into account any surface features such as buildings or vegetation. Nor does it take account of the 30m high Tummel Underbridge, the visibility of which is illustrated on Figure 14.2b.

0	DEC 2017	ES Publication	JCR	MK	ML	AJG
Rev.	Rev. Date	Purpose of revision	Orig/Dwn	Checkd	Rev'd	Apprv'd

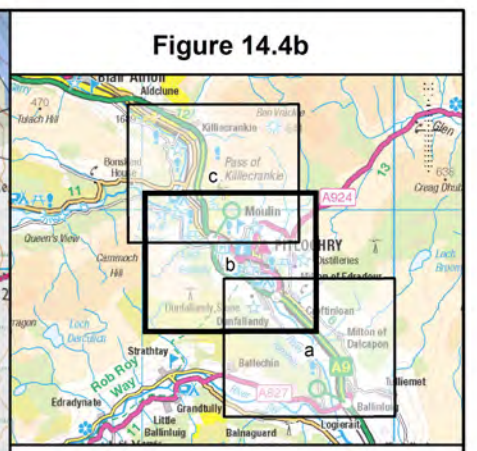
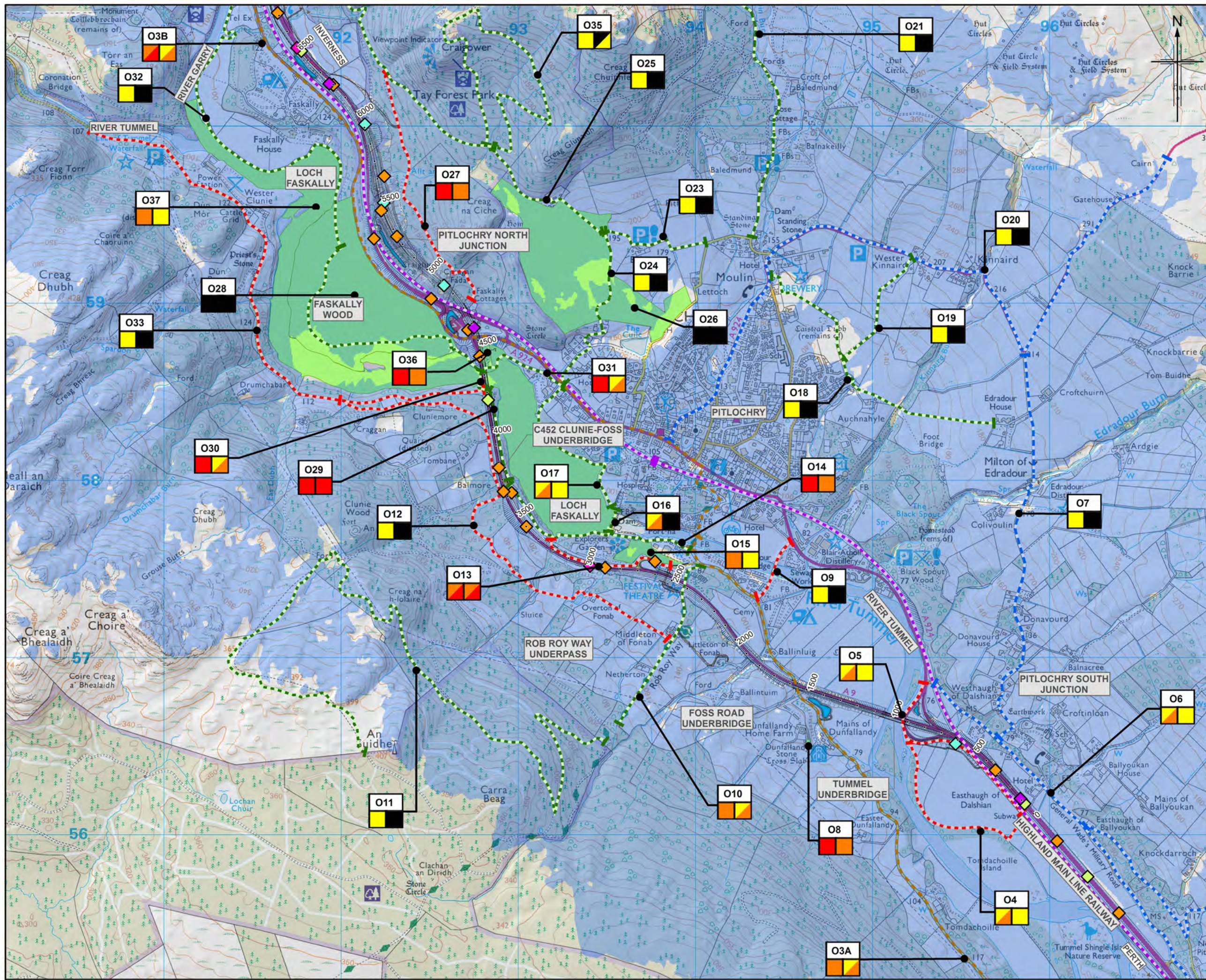
JACOBS
 95 Bothwell Street, Glasgow, G2 7HX, UK
 Tel: +44(0)141 243 8000
 www.jacobs.com

Client
TRANSPORT SCOTLAND
 COPPERHILL ALBA

Project
A9 DUALLING
 PERTH TO INVERNESS
 Pitlochry to Killin

Drawing title
Environmental Statement
Visual Impacts on
Outdoor Receptors

Drawing Status	FINAL	Sheet 1 of 3
Scale	1:20,000 @ A3	DO NOT SCALE
Jacobs No.	B2140004	
BIM No.		
Drawing number	Figure 14.4a	Rev 0



Legend

- Proposed scheme (DMRB Stage 3 design)
- SuDS Retention Pond
- Outdoor Receptors
 - Core path
 - NM10 route
 - National Cycle Route
 - Railway line
 - Road
 - Recreation
- Receptor number
 - a) Receptor number
 - b) Impact Winter Year of Opening
 - c) Impact Summer 15 Years
- Visual Impact
 - Negligible
 - Negligible/Slight
 - Slight
 - Slight/Moderate
 - Moderate
 - Moderate/Substantial
 - Substantial
- Indicative signage
 - ADS sign
 - Route confirmation sign
 - Tourist sign
 - VMS sign
 - Other large sign
- Zone of Theoretical Visibility (ZTV)
 - Visibility at target points along the proposed scheme

* Note:
 The height from alignment was set at 30m and viewer height was 1.75m. The ZTV calculation only takes account of landform and does not take into account any surface features such as buildings or vegetation. Nor does it take account of the 30m high Tummel Underbridge, the visibility of which is illustrated on Figure 14.2b.

0	DEC 2017	ES Publication	JCR	MK	ML	AJG
Rev.	Rev. Date	Purpose of revision	Orig/Dwn	Checkd	Rev'd	Apprv'd

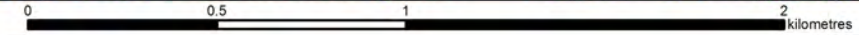
JACOBS
 95 Bothwell Street, Glasgow, G2 7HX, UK
 Tel: +44(0)141 243 8000
 www.jacobs.com

Client
TRANSPORT SCOTLAND
 COPHSHAL ALBA

Project
A9 DUALLING
 PERTH TO INVERNESS
 Pitlochry to Killin

Drawing title
Environmental Statement
Visual Impacts on
Outdoor Receptors

Sheet 2 of 3		
Drawing Status	FINAL	
Scale	1:20,000 @ A3	DO NOT SCALE
Jacobs No.	B2140004	
BIM No.		
Drawing number	Figure 14.4b	Rev 0



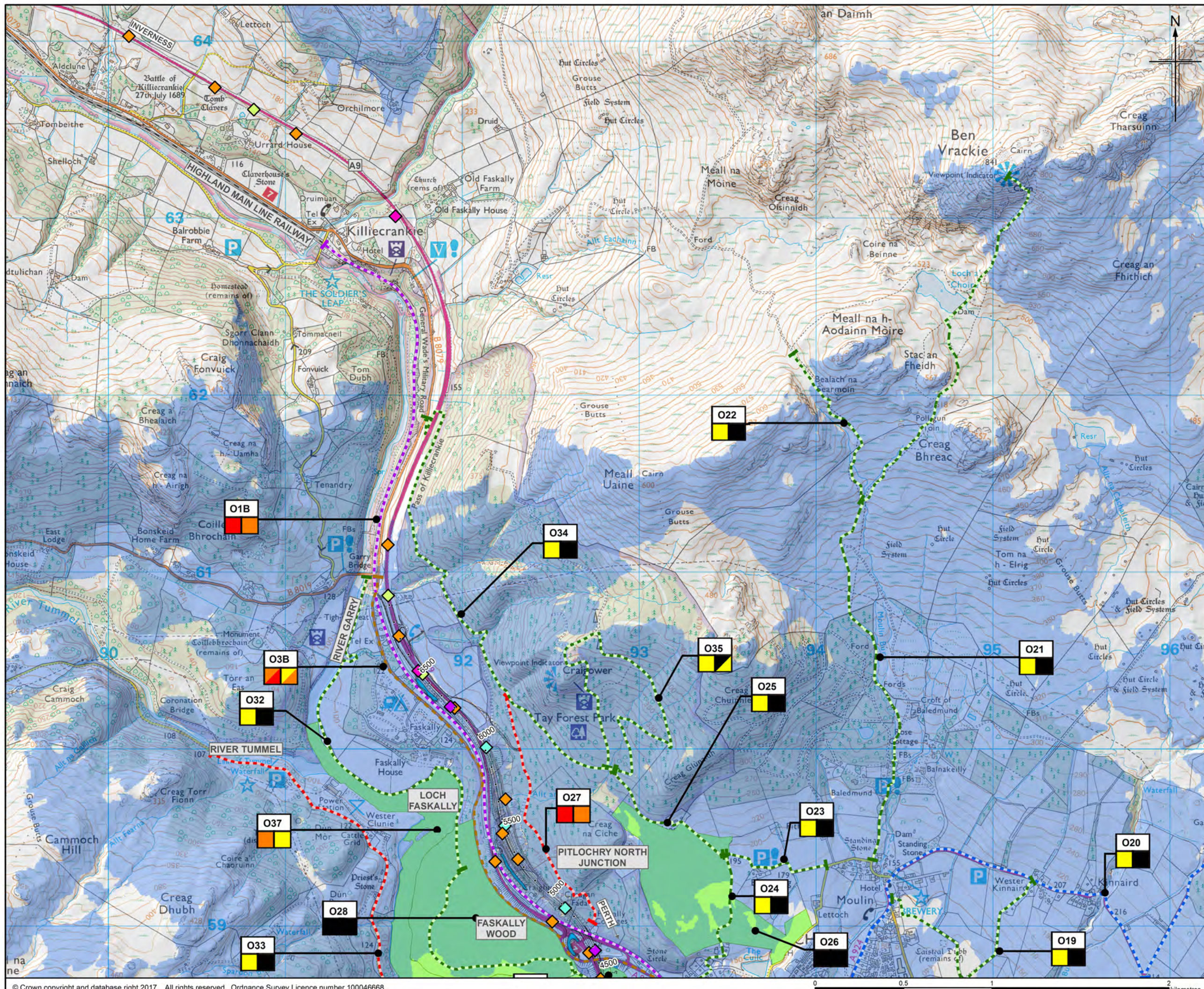


Figure 14.4c

Legend

- Proposed scheme (DMRB Stage 3 design)
- SuDS Retention Pond

Outdoor Receptors

- Core path
- NM10 route
- National Cycle Route
- Railway line
- Road
- Recreation

a) Receptor number
 b) Impact Winter Year of Opening
 c) Impact Summer 15 Years

Visual Impact

- Negligible
- Negligible/Slight
- Slight
- Slight/Moderate
- Moderate
- Moderate/Substantial
- Substantial

Indicative signage

- ADS sign
- Route confirmation sign
- Tourist sign
- VMS sign
- Other large sign

Zone of Theoretical Visibility (ZTV) *

- Visibility at target points along the proposed scheme

* Note:
 The height from alignment was set at 30m and viewer height was 1.75m. The ZTV calculation only takes account of landform and does not take into account any surface features such as buildings or vegetation. Nor does it take account of the 30m high Tummel Underbridge, the visibility of which is illustrated on Figure 14.2b.

Rev.	Rev. Date	Purpose of revision	Orig/Dwn	Checkd	Rev'd	Apprv'd
0	DEC 2017	ES Publication	JCR	MK	ML	AJG

JACOBS
 95 Bothwell Street, Glasgow, G2 7HX, UK
 Tel: +44(0)141 243 8000
 www.jACOBS.com

Client: **TRANSPORT SCOTLAND**
 COPRHSAL ALBA

Project: **A9 DUALLING**
 PERTH TO INVERNESS
 Pitlochry to Killiecrankie

Drawing title: **Environmental Statement**
Visual Impacts on
Outdoor Receptors

Sheet 3 of 3

Drawing Status	FINAL
Scale	1:20,000 @ A3 DO NOT SCALE
JACOBS No.	B2140004
BIM No.	
Drawing number	Figure 14.4c
Rev	0

This drawing is not to be used in whole or part other than for the intended purpose and project as defined on this drawing. Refer to the contract for full terms and conditions.