

**Legend**

- Proposed scheme (DMRB Stage 3 design)
- SuDS
- Noise and vibration study area
- Noise and vibration calculation area
- Health and education buildings
- Baseline noise monitoring locations - sample receptors

**Do-Minimum Baseline Year Vs Do-Something Baseline Year (L<sub>A10,18hr</sub> Free-field) First Floor**  
**x = noise level**

- $x \geq 10$  dB
- $5 \leq x < 10$  dB
- $3 \leq x < 5$  dB
- $1 \leq x < 3$  dB
- $0 < x < 1$  dB
- $x = 0$  dB
- $-1 < x < 0$  dB
- $-3 < x \leq -1$  dB
- $-5 < x \leq -3$  dB
- $-10 < x \leq -5$  dB
- $x \leq -10$  dB

Rev.	Rev. Date	Purpose of revision	Orig/Dwn	Check'd	Rev'd	Apprv'd
0	DEC 2017	ES Publication	EM	SG	BM	AJG

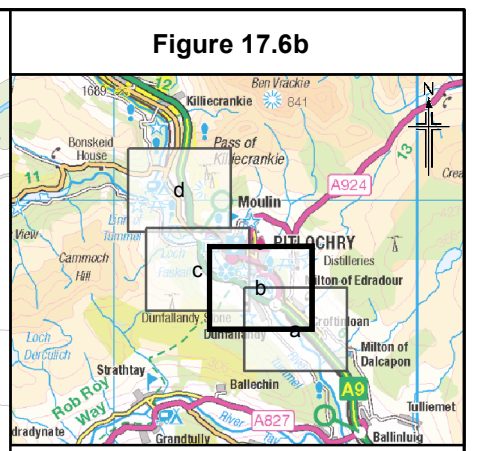
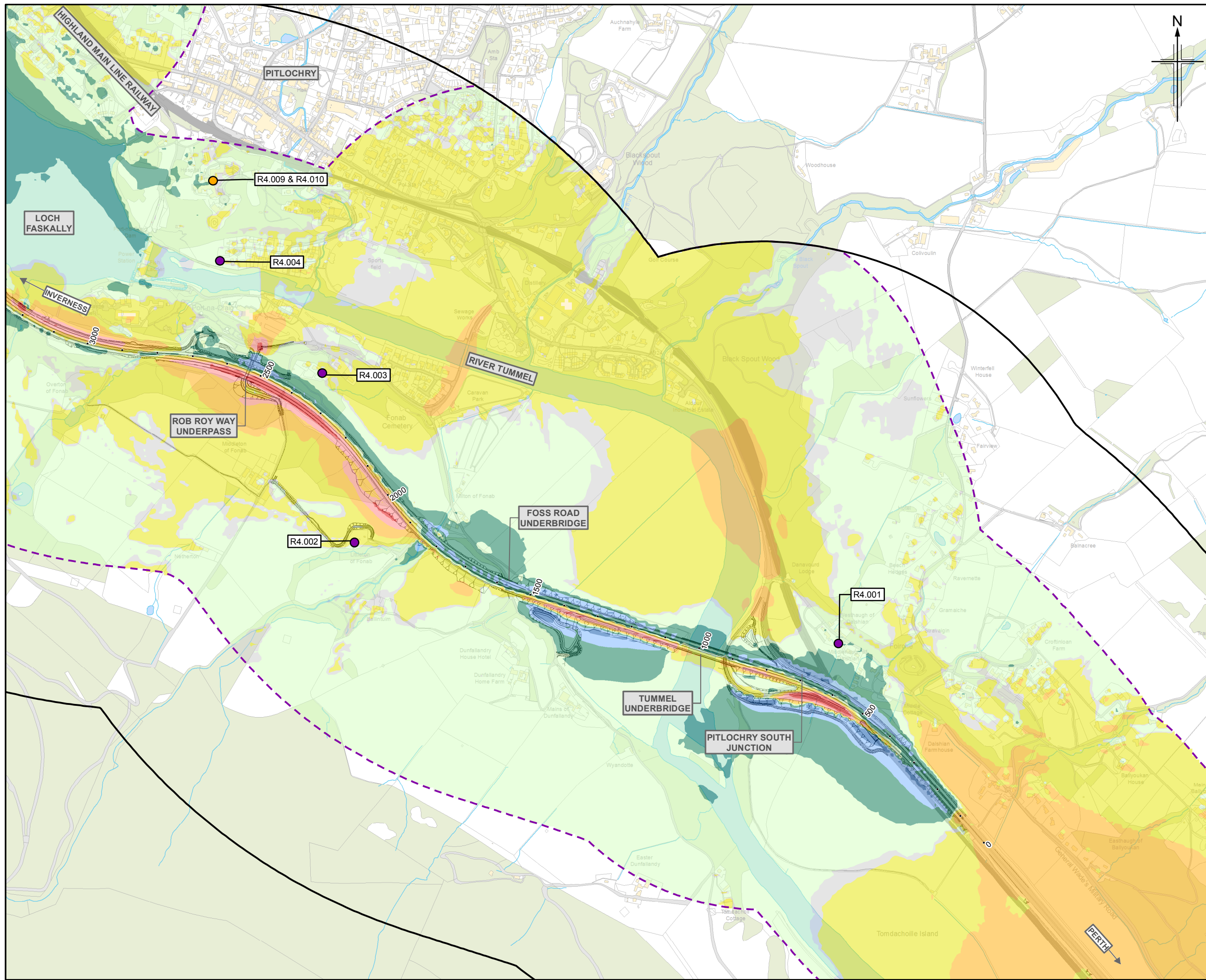
**JACOBS**  
 95 Bothwell Street, Glasgow, G2 7HX, UK.  
 Tel: +44(0)141 243 8000  
 www.jacobs.com

Client  
**TRANSPORT SCOTLAND**  
 COIMHIGHEAL ALBA

Project  
**A9 DUALLING**  
 PERTH TO INVERNESS  
 Pitlochry to Killiecrankie

Drawing title  
**Environmental Statement**  
**Noise Level Difference Contour Map (First Floor) Do-Minimum Baseline Year Vs Do-Something Baseline Year**  
 Sheet 1 of 4

Drawing Status	FINAL
Scale	1:10,000 @ A3 DO NOT SCALE
Jacobs No.	B2140004
BIM No.	
Drawing number	Figure 17.6a
Rev	0



**Legend**

- Proposed scheme (DMRB Stage 3 design)
- SuDS
- Noise and vibration study area
- Noise and vibration calculation area
- Health and education buildings
- Baseline noise monitoring locations - sample receptors

**Do-Minimum Baseline Year Vs Do-Something Baseline Year ( $L_{A10,18hr}$  Free-field) First Floor**  
 $x$  = noise level

- $x \geq 10$  dB
- $5 \leq x < 10$  dB
- $3 \leq x < 5$  dB
- $1 \leq x < 3$  dB
- $0 < x < 1$  dB
- $x = 0$  dB
- $-1 < x < 0$  dB
- $-3 < x \leq -1$  dB
- $-5 < x \leq -3$  dB
- $-10 < x \leq -5$  dB
- $x \leq -10$  dB

0	DEC 2017	ES Publication	EM	SG	BM	AJG
Rev.	Rev. Date	Purpose of revision	Orig/Dwn	Checkd	Rev'd	Apprv'd

**JACOBS**  
 95 Bothwell Street, Glasgow, G2 7HX, UK.  
 Tel: +44(0)141 243 8000  
 www.jacobs.com

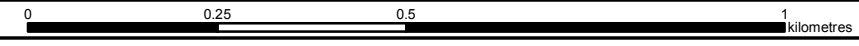
Client  
**TRANSPORT SCOTLAND**  
 COBHIDHAL ALBA

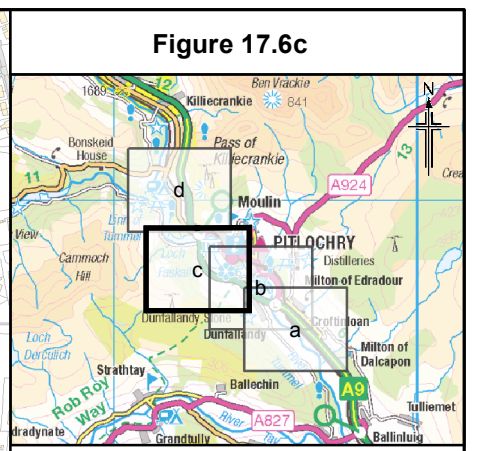
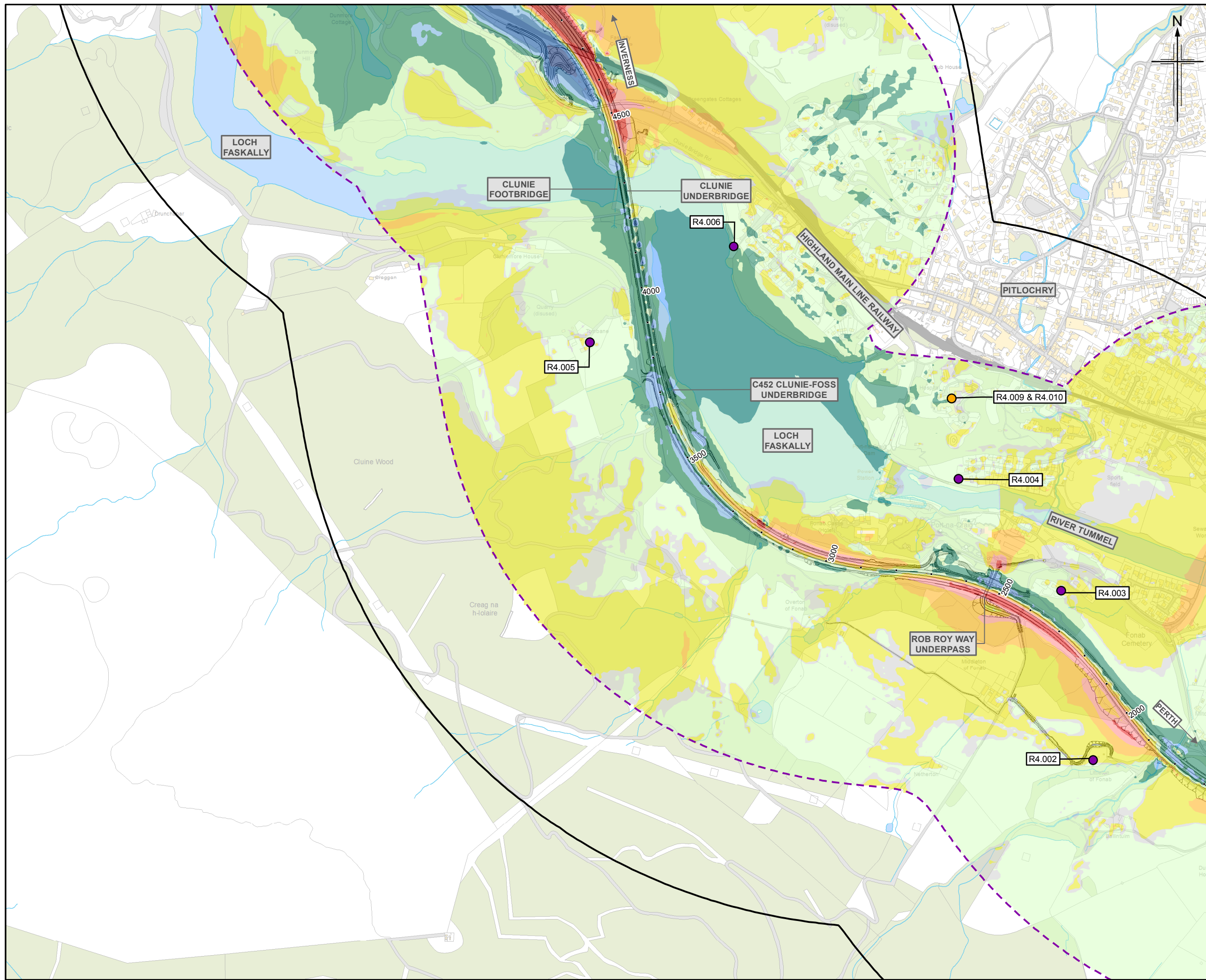
Project  
**A9 DUALLING**  
 PERTH TO INVERNESS  
 Pitlochry to Killiecrankie

Drawing title  
**Environmental Statement**  
**Noise Level Difference Contour Map (First Floor) Do-Minimum Baseline Year Vs Do-Something Baseline Year**  
 Sheet 2 of 4

Drawing Status	FINAL
Scale	1:10,000 @ A3 DO NOT SCALE
Jacobs No.	B2140004
BIM No.	
Drawing number	Figure 17.6b
Rev	0

This drawing is not to be used in whole or part other than for the intended purpose and project as defined on this drawing. Refer to the contract for full terms and conditions.





**Figure 17.6c**

**Legend**

- Proposed scheme (DMRB Stage 3 design)
- SuDS
- Noise and vibration study area
- Noise and vibration calculation area
- Health and education buildings
- Baseline noise monitoring locations - sample receptors

**Do-Minimum Baseline Year Vs Do-Something Baseline Year (L<sub>A10,18hr</sub> Free-field) First Floor**  
**x = noise level**

- x ≥ 10 dB
- 5 ≤ x < 10 dB
- 3 ≤ x < 5 dB
- 1 ≤ x < 3 dB
- 0 < x < 1 dB
- x = 0 dB
- 1 < x < 0 dB
- 3 < x ≤ -1 dB
- 5 < x ≤ -3 dB
- 10 < x ≤ -5 dB
- x ≤ -10 dB

0	DEC 2017	ES Publication	EM	SG	BM	AJG
Rev.	Rev. Date	Purpose of revision	Orig/Dwn	Checkd	Rev'd	Apprv'd

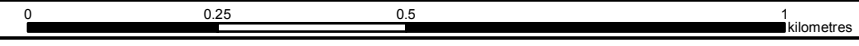
**JACOBS**  
 95 Bothwell Street, Glasgow, G2 7HX, UK.  
 Tel: +44(0)141 243 8000  
 www.jacobs.com

Client  
  
 TRANSPORT SCOTLAND  
 COBHIDHAL ALBA

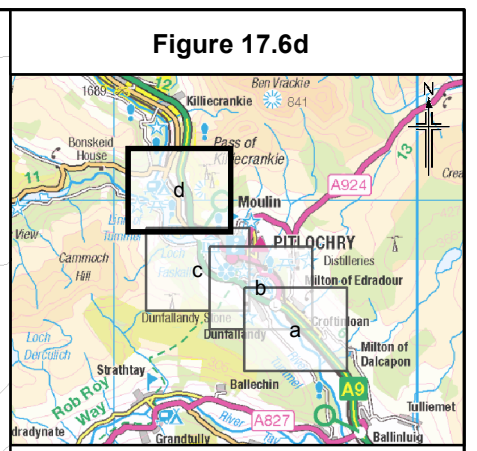
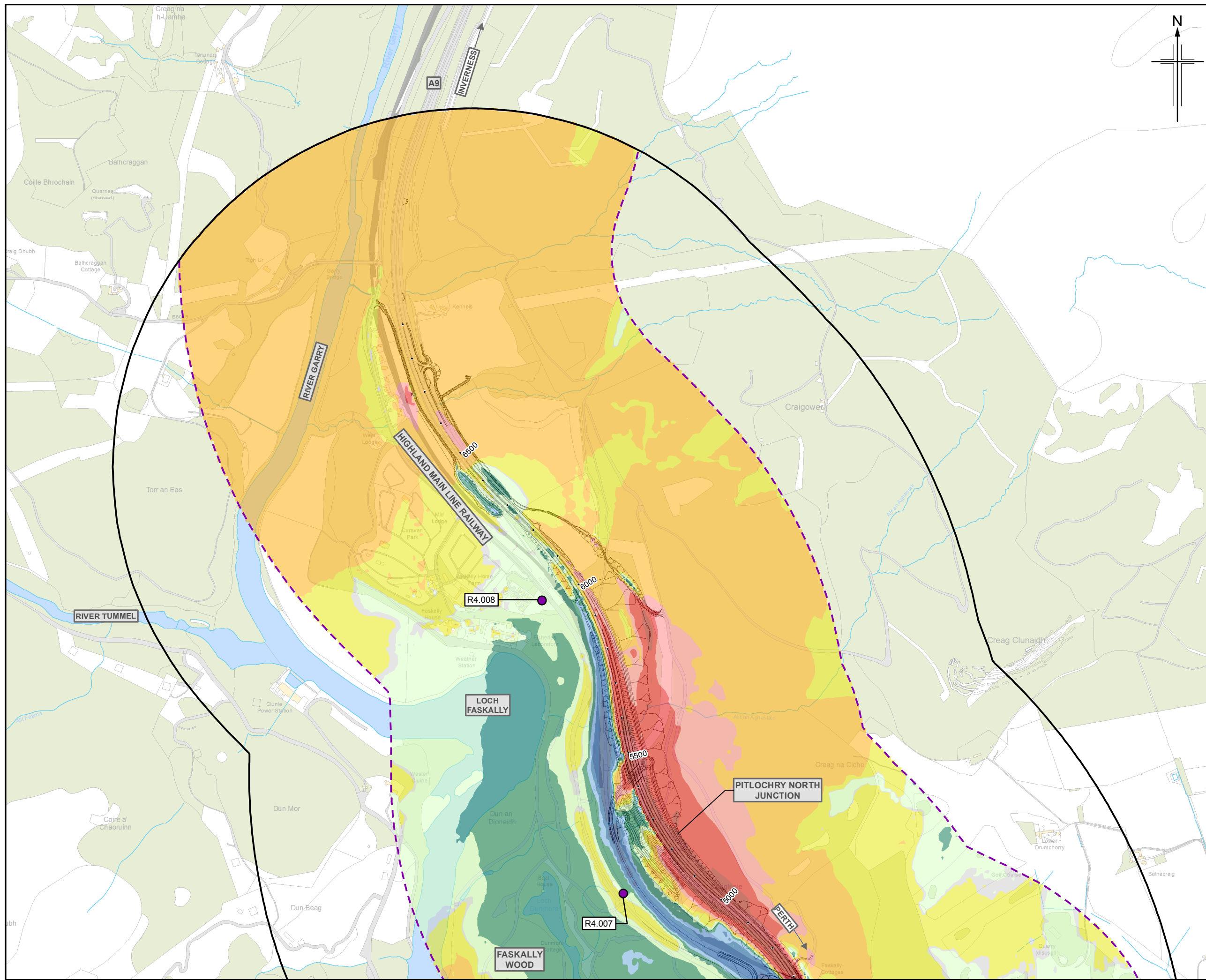
Project  
  
**A9 DUALLING**  
 PERTH TO INVERNESS  
 Pitlochry to Killiecrankie

Drawing title  
**Environmental Statement**  
**Noise Level Difference Contour Map (First Floor) Do-Minimum Baseline Year Vs Do-Something Baseline Year**  
 Sheet 3 of 4

Drawing Status	FINAL
Scale	1:10,000 @ A3 DO NOT SCALE
Jacobs No.	B2140004
BIM No.	
Drawing number	Figure 17.6c
Rev	0



This drawing is not to be used in whole or part other than for the intended purpose and project as defined on this drawing. Refer to the contract for full terms and conditions.



**Legend**

- Proposed scheme (DMRB Stage 3 design)
- SuDS
- Noise and vibration study area
- Noise and vibration calculation area
- Health and education buildings
- Baseline noise monitoring locations - sample receptors

**Do-Minimum Baseline Year Vs Do-Something Baseline Year (L<sub>A10,18hr</sub> Free-field) First Floor**  
**x = noise level**

- x ≥ 10 dB
- 5 ≤ x < 10 dB
- 3 ≤ x < 5 dB
- 1 ≤ x < 3 dB
- 0 < x < 1 dB
- x = 0 dB
- 1 < x < 0 dB
- 3 < x ≤ -1 dB
- 5 < x ≤ -3 dB
- 10 < x ≤ -5 dB
- x ≤ -10 dB

0	DEC 2017	ES Publication	EM	SG	BM	AJG
Rev.	Rev. Date	Purpose of revision	Orig/Dwn	Checkd	Rev'd	Apprv'd

**JACOBS**  
 95 Bothwell Street, Glasgow, G2 7HX, UK.  
 Tel: +44(0)141 243 8000  
 www.jacobs.com

Client  
  
 TRANSPORT SCOTLAND  
 COIMHIGHAL ALBA

Project  
  
**A9**  
 DUALLING  
 PERTH TO INVERNESS  
 Pitlochry to Killiecrankie

Drawing title  
**Environmental Statement  
 Noise Level Difference Contour Map (First Floor) Do-Minimum Baseline Year Vs Do-Something Baseline Year**  
 Sheet 4 of 4

Drawing Status	FINAL
Scale	1:10,000 @ A3 DO NOT SCALE
Jacobs No.	B2140004
BIM No.	
Drawing number	<b>Figure 17.6d</b>
Rev	<b>0</b>