

Figure 17.11a

Legend

- Proposed scheme (DMRB Stage 3 design)
- SuDS
- Noise and vibration study area
- Noise and vibration calculation area
- Area of low noise road surfacing (LNRS)
- Noise mitigation barrier
- Health and education buildings
- Baseline noise monitoring locations - sample receptors

Do-Minimum Baseline Year Vs Do-Something Baseline Year with Mitigation (L_{A10,18hr} Free-field) First Floor

x = noise level

- x ≥ 10 dB
- 5 ≤ x < 10 dB
- 3 ≤ x < 5 dB
- 1 ≤ x < 3 dB
- 0 < x < 1 dB
- x = 0 dB
- 1 < x < 0 dB
- 3 < x ≤ -1 dB
- 5 < x ≤ -3 dB
- 10 < x ≤ -5 dB
- x ≤ -10 dB

Rev.	Rev. Date	Purpose of revision	Orig/Dwn	Check'd	Rev'd	Apprv'd
0	DEC 2017	ES Publication	EM	SG	BM	AJG

JACOBS
95 Bothwell Street, Glasgow, G2 7HX, UK.
Tel: +44(0)141 243 8000
www.jacobs.com

Client: **TRANSPORT SCOTLAND**
CORRIDOR ALBA

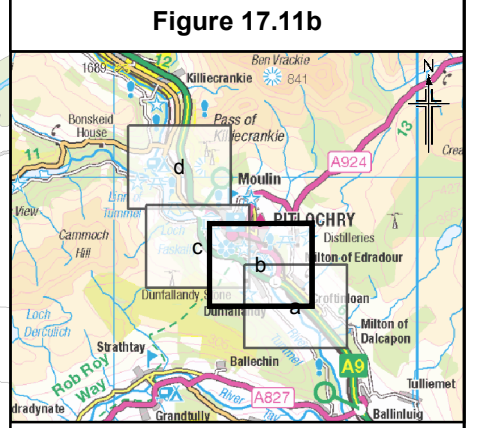
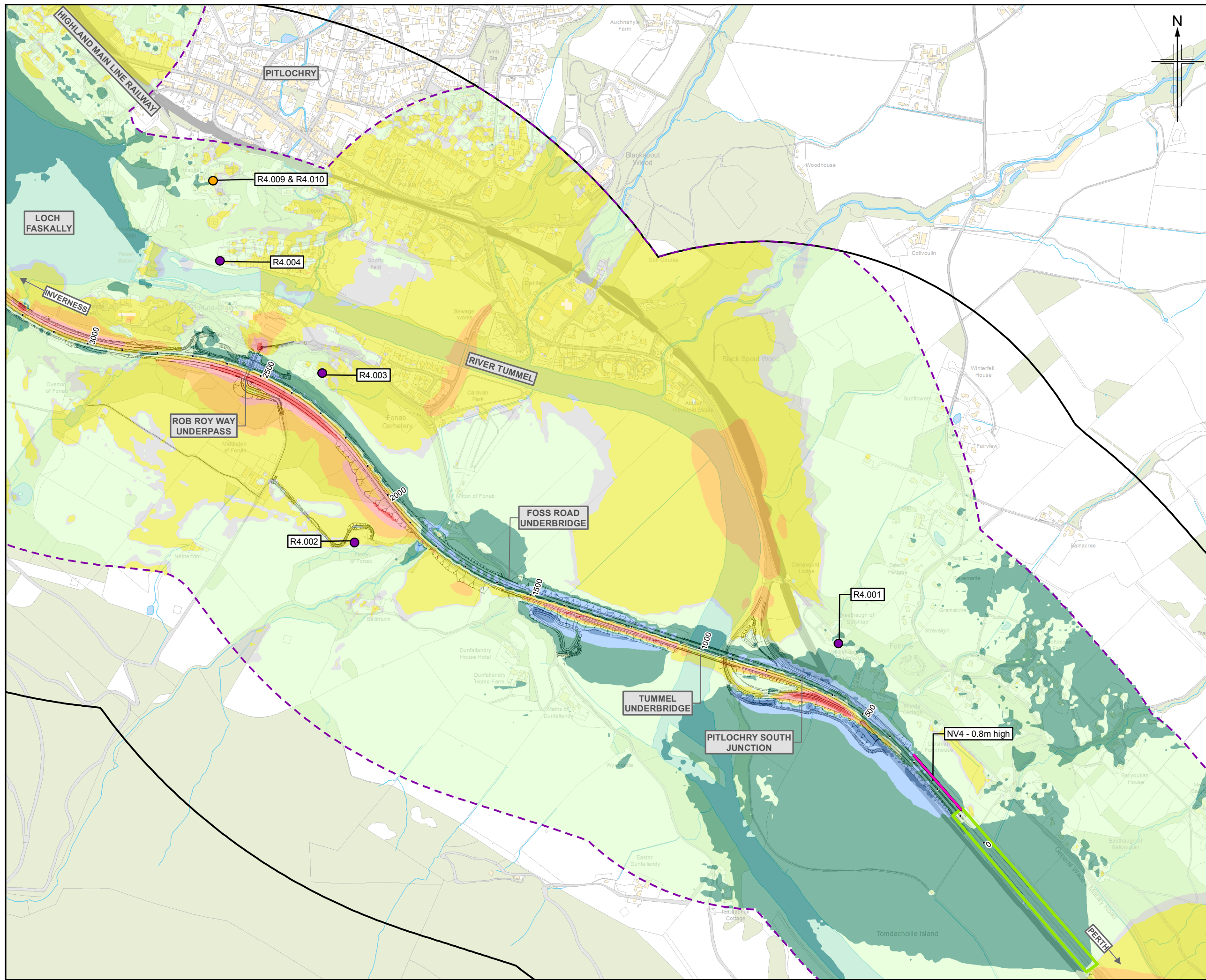
Project: **A9 DUALLING**
PERTH TO INVERNESS
Pitlochry to Killiecrankie

Drawing title: **Environmental Statement
Noise Level Difference Contour Map
(First Floor) Do-Minimum Baseline Year Vs
Do-Something Baseline Year
(with Mitigation) Sheet 1 of 4**

Drawing Status	FINAL	
Scale	1:10,000 @ A3	DO NOT SCALE
Jacobs No.	B2140004	
BIM No.		
Drawing number	Figure 17.11a	Rev 0

This drawing is not to be used in whole or part other than for the intended purpose and project as defined on this drawing. Refer to the contract for full terms and conditions.

© Crown copyright and database right 2017. All rights reserved. Ordnance Survey Licence number 100046668.



Legend

- Proposed scheme (DMRB Stage 3 design)
- SuDS
- Noise and vibration study area
- Noise and vibration calculation area
- Area of low noise road surfacing (LNRS)
- Noise mitigation barrier
- Health and education buildings
- Baseline noise monitoring locations - sample receptors

Do-Minimum Baseline Year Vs Do-Something Baseline Year with Mitigation (L_{A10,18hr} Free-field) First Floor

x = noise level

- x ≥ 10 dB
- 5 ≤ x < 10 dB
- 3 ≤ x < 5 dB
- 1 ≤ x < 3 dB
- 0 < x < 1 dB
- x = 0 dB
- 1 < x < 0 dB
- 3 < x ≤ -1 dB
- 5 < x ≤ -3 dB
- 10 < x ≤ -5 dB
- x ≤ -10 dB

0	DEC 2017	ES Publication	EM	SG	BM	AJG
Rev.	Rev. Date	Purpose of revision	Orig/Dwn	Checkd	Rev'd	Apprv'd

JACOBS
95 Bothwell Street, Glasgow, G2 7HX, UK.
Tel: +44(0)141 243 8000
www.jacobs.com

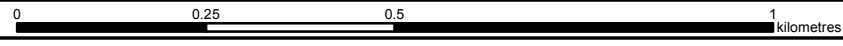
Client
TRANSPORT SCOTLAND
CORRIDOR ALBA

Project
A9 DUALLING
PERTH TO INVERNESS
Pitlochry to Killiecrankie

Drawing title
Environmental Statement
Noise Level Difference Contour Map
(First Floor) Do-Minimum Baseline Year Vs
Do-Something Baseline Year
(with Mitigation) Sheet 2 of 4

Drawing Status	FINAL		
Scale	1:10,000	@ A3	DO NOT SCALE
Jacobs No.	B2140004		
BIM No.			
Drawing number	Figure 17.11b		Rev 0

This drawing is not to be used in whole or part other than for the intended purpose and project as defined on this drawing. Refer to the contract for full terms and conditions.



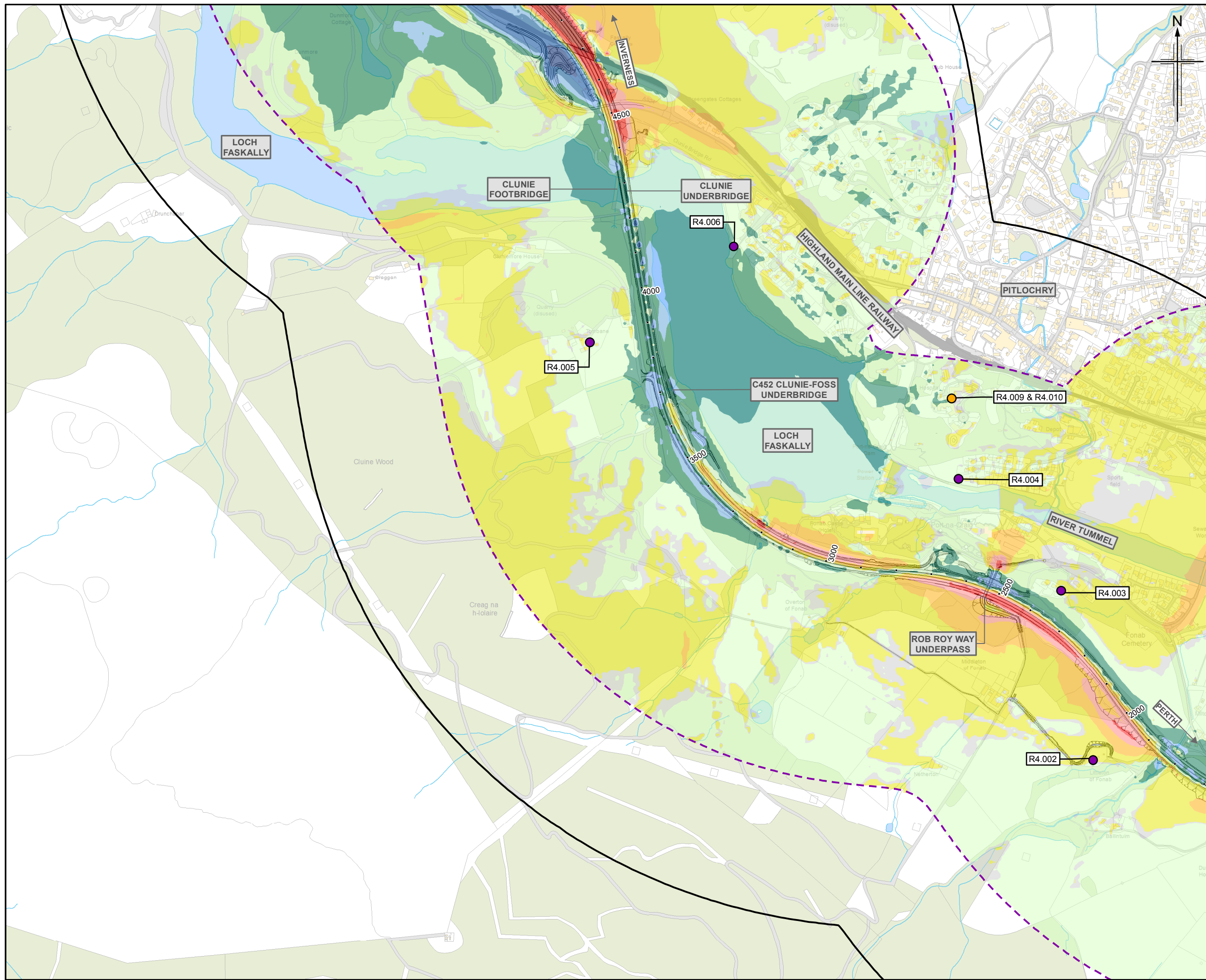


Figure 17.11c

Legend

- Proposed scheme (DMRB Stage 3 design)
- SuDS
- Noise and vibration study area
- Noise and vibration calculation area
- Area of low noise road surfacing (LNRS)
- Noise mitigation barrier
- Health and education buildings
- Baseline noise monitoring locations - sample receptors

Do-Minimum Baseline Year Vs Do-Something Baseline Year with Mitigation (L_{A10,18hr} Free-field) First Floor

x = noise level

- x ≥ 10 dB
- 5 ≤ x < 10 dB
- 3 ≤ x < 5 dB
- 1 ≤ x < 3 dB
- 0 < x < 1 dB
- x = 0 dB
- 1 < x < 0 dB
- 3 < x ≤ -1 dB
- 5 < x ≤ -3 dB
- 10 < x ≤ -5 dB
- x ≤ -10 dB

Rev.	Rev. Date	Purpose of revision	Orig/Dwn	Checkd	Rev'd	Apprv'd
0	DEC 2017	ES Publication	EM	SG	BM	AJG

JACOBS
95 Bothwell Street, Glasgow, G2 7HX, UK.
Tel: +44(0)141 243 8000
www.jacobs.com

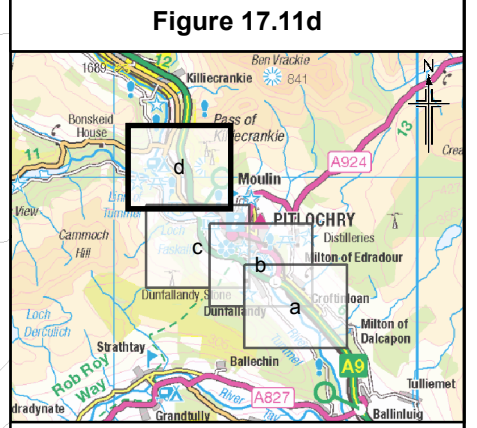
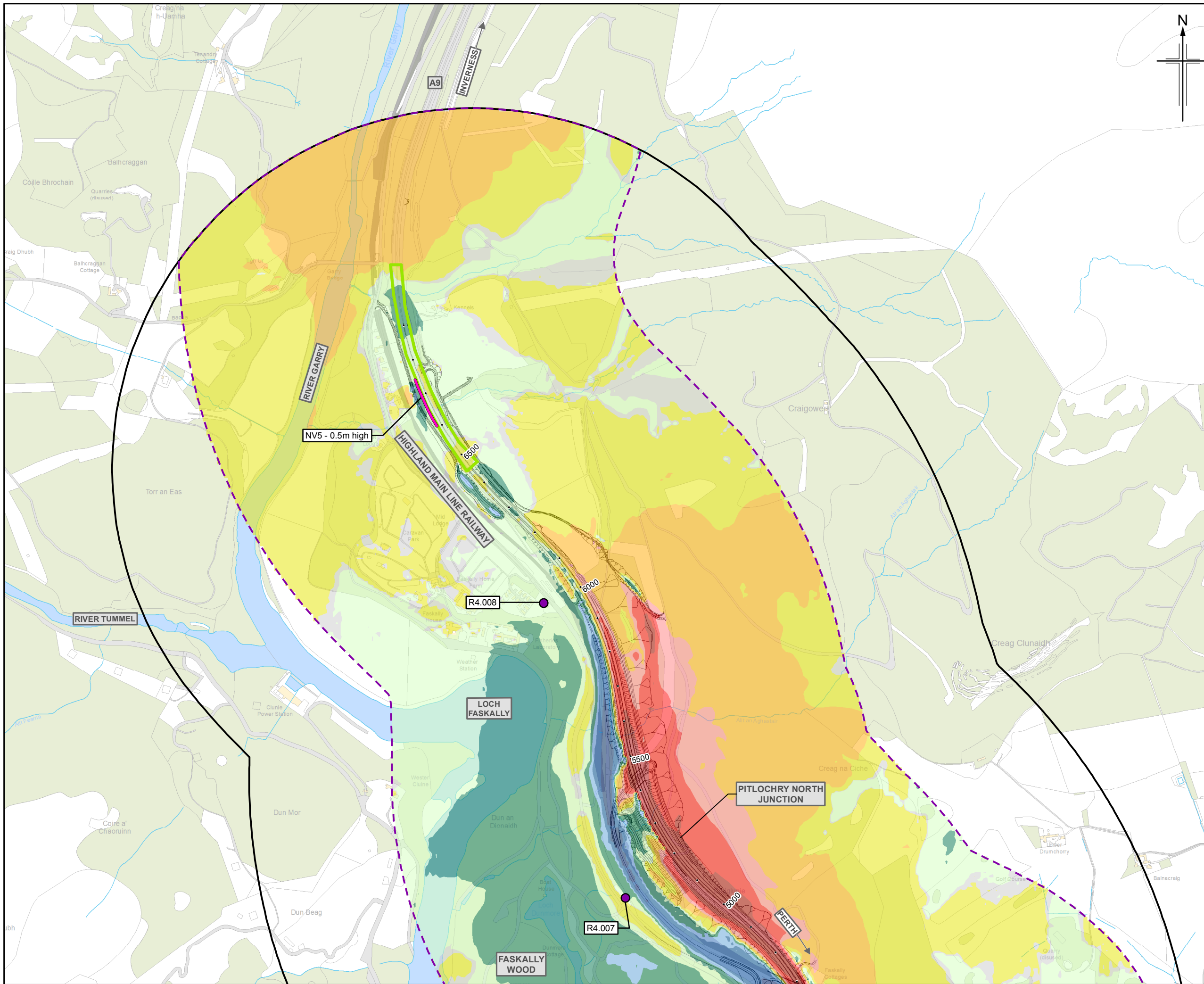
Client: **TRANSPORT SCOTLAND**
CORRIDOR ALBA

Project: **A9 DUALLING**
PERTH TO INVERNESS
Pitlochry to Killiecrankie

Drawing title: **Environmental Statement
Noise Level Difference Contour Map
(First Floor) Do-Minimum Baseline Year Vs
Do-Something Baseline Year
(with Mitigation) Sheet 3 of 4**

Drawing Status	FINAL	
Scale	1:10,000 @ A3	DO NOT SCALE
Jacobs No.	B2140004	
BIM No.		
Drawing number	Figure 17.11c	Rev 0

This drawing is not to be used in whole or part other than for the intended purpose and project as defined on this drawing. Refer to the contract for full terms and conditions.



- Legend**
- Proposed scheme (DMRB Stage 3 design)
 - SuDS
 - Noise and vibration study area
 - Noise and vibration calculation area
 - Area of low noise road surfacing (LNRS)
 - Noise mitigation barrier
 - Health and education buildings
 - Baseline noise monitoring locations - sample receptors

Do-Minimum Baseline Year Vs Do-Something Baseline Year with Mitigation (L_{A10,18hr} Free-field) First Floor

- x = noise level**
- x ≥ 10 dB
 - 5 ≤ x < 10 dB
 - 3 ≤ x < 5 dB
 - 1 ≤ x < 3 dB
 - 0 < x < 1 dB
 - x = 0 dB
 - 1 < x < 0 dB
 - 3 < x ≤ -1 dB
 - 5 < x ≤ -3 dB
 - 10 < x ≤ -5 dB
 - x ≤ -10 dB

0	DEC 2017	ES Publication	EM	SG	BM	AJG
Rev.	Rev. Date	Purpose of revision	Orig/Dwn	Checkd	Rev'd	Apprv'd

JACOBS
95 Bothwell Street, Glasgow, G2 7HX, UK.
Tel: +44(0)141 243 8000
www.jacobs.com

Client
TRANSPORT SCOTLAND
COMHSHAL ALBA

Project
A9 DUALLING
PERTH TO INVERNESS
Pitlochry to Killiecrankie

Drawing title
**Environmental Statement
Noise Level Difference Contour Map
(First Floor) Do-Minimum Baseline Year Vs
Do-Something Baseline Year
(with Mitigation) Sheet 4 of 4**

Drawing Status	FINAL
Scale	1:10,000 @ A3 DO NOT SCALE
Jacobs No.	B2140004
BIM No.	
Drawing number	Figure 17.11d
Rev	0

