

**Legend**

- Proposed scheme (DMRB Stage 3 design)
- SuDS
- Noise and vibration study area
- Noise and vibration calculation area
- Area of low noise road surfacing (LNRS)
- Noise mitigation barrier
- Health and education buildings
- Baseline noise monitoring locations - sample receptors

**Do-Minimum Baseline Year Vs Do-Something Future Assessment Year with Mitigation (LA<sub>10,18hr</sub> Free-field) Ground Floor**  
 x = noise level

- x ≥ 10 dB
- 5 ≤ x < 10 dB
- 3 ≤ x < 5 dB
- 0 < x < 3 dB
- x = 0 dB
- 3 < x < 0 dB
- 5 < x ≤ -3 dB
- 10 < x ≤ -5 dB
- x ≤ -10 dB

0	DEC 2017	ES Publication	EM	SG	BM	AJG
Rev.	Rev. Date	Purpose of revision	Orig/Dwn	Checkd	Rev'd	Apprv'd

**JACOBS**  
 95 Bothwell Street, Glasgow, G2 7HX, UK.  
 Tel: +44(0)141 243 8000  
 www.jacobs.com

Client  
  
 TRANSPORT SCOTLAND  
 COIMHIGHEAL ALBA

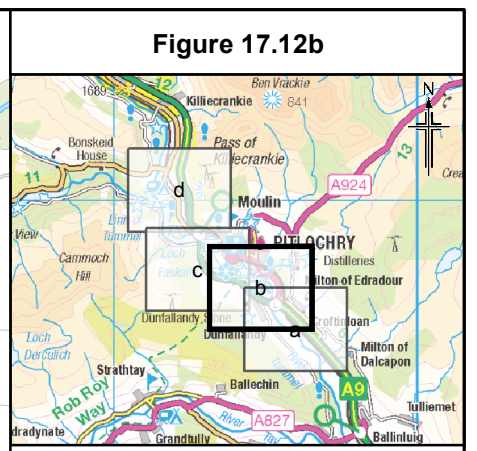
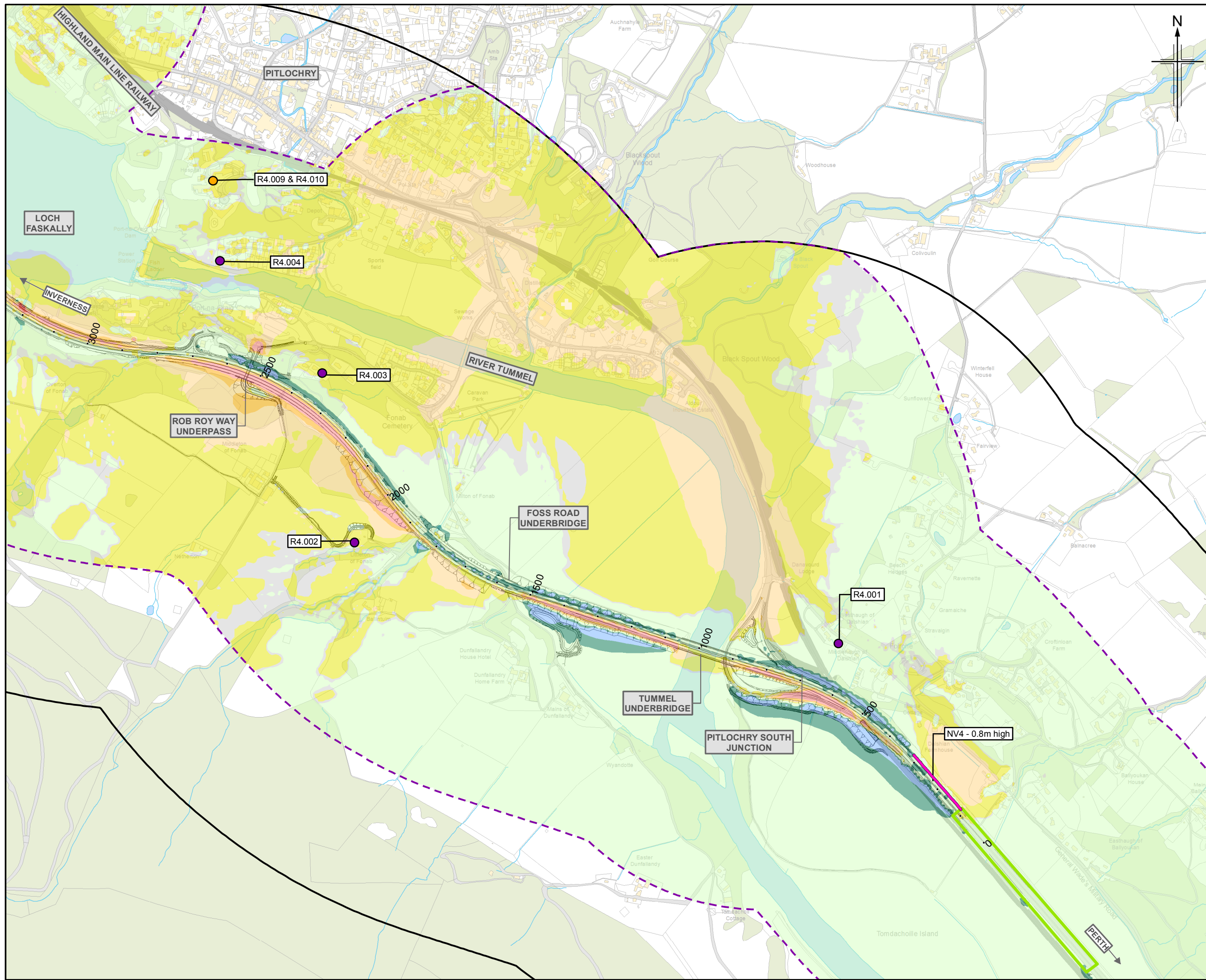
Project  
  
**A9**  
 DUALLING  
 PERTH TO INVERNESS  
 Pitlochry to Killiecrankie

Drawing title  
**Environmental Statement  
 Noise Level Difference Contour Map  
 (Ground Floor) Do-Minimum Baseline Year  
 Vs Do-Something Future Assessment Year  
 (with Mitigation) Sheet 1 of 4**

Drawing Status	FINAL		
Scale	1:10,000	@ A3	DO NOT SCALE
Jacobs No.	B2140004		
BIM No.			
Drawing number	<b>Figure 17.12a</b>		Rev <b>0</b>



This drawing is not to be used in whole or part other than for the intended purpose and project as defined on this drawing. Refer to the contract for full terms and conditions.



**Legend**

- Proposed scheme (DMRB Stage 3 design)
- SuDS
- Noise and vibration study area
- Noise and vibration calculation area
- Area of low noise road surfacing (LNRS)
- Noise mitigation barrier
- Health and education buildings
- Baseline noise monitoring locations - sample receptors

**Do-Minimum Baseline Year Vs Do-Something Future Assessment Year with Mitigation (LA10,18hr Free-field) Ground Floor x = noise level**

- $x \geq 10$  dB
- $5 \leq x < 10$  dB
- $3 \leq x < 5$  dB
- $0 < x < 3$  dB
- $x = 0$  dB
- $-3 < x < 0$  dB
- $-5 < x \leq -3$  dB
- $-10 < x \leq -5$  dB
- $x \leq -10$  dB

Rev.	Rev. Date	Purpose of revision	Orig/Drawn	Checked	Rev'd	Apprv'd
0	DEC 2017	ES Publication	EM	SG	BM	AJG

**JACOBS**  
95 Bothwell Street, Glasgow, G2 7HX, UK.  
Tel: +44(0)141 243 8000  
www.jacobs.com

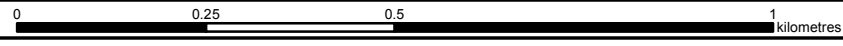
Client  
**TRANSPORT SCOTLAND**  
COBHIDHAL ALBA

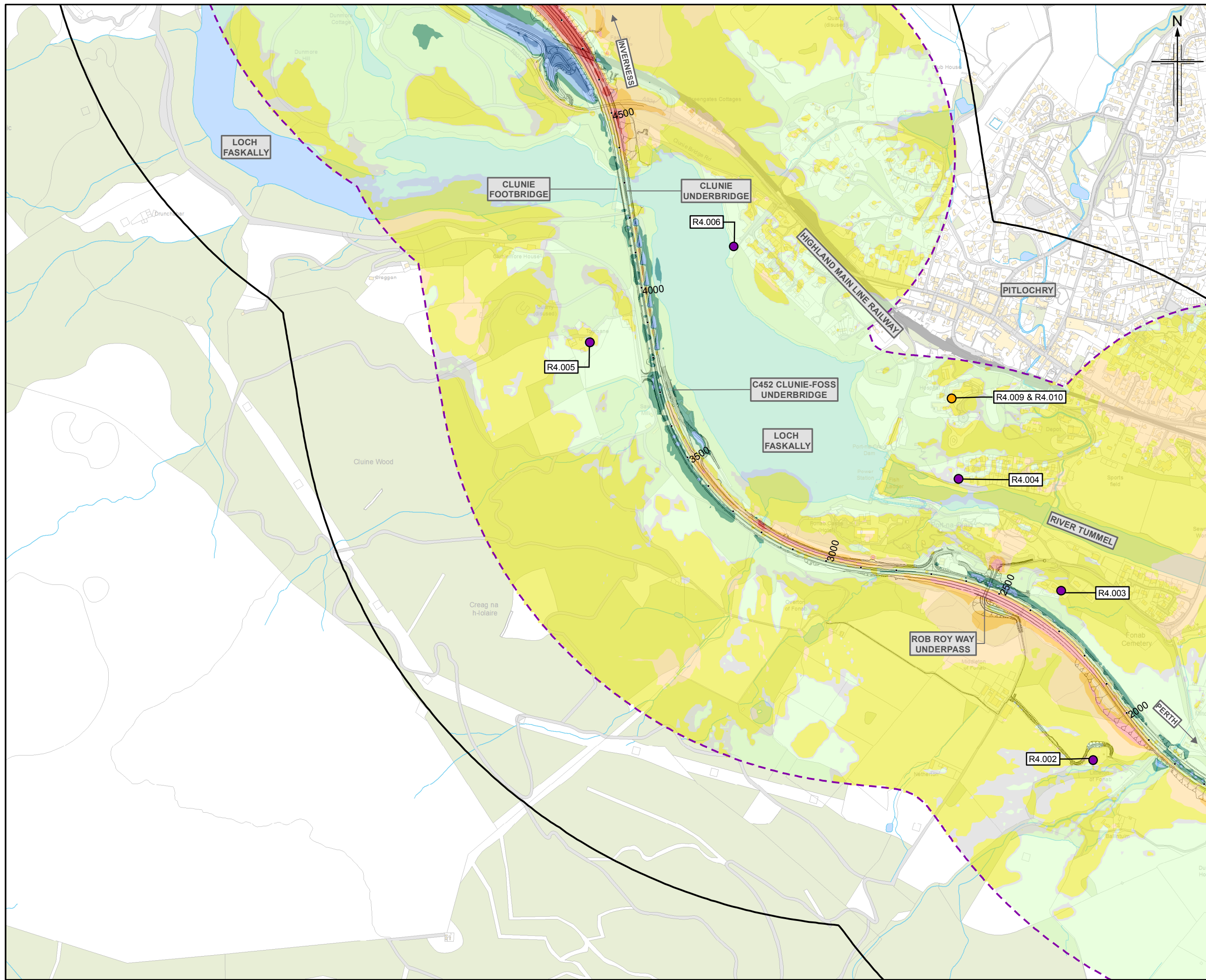
Project  
**A9 DUALLING**  
PERTH TO INVERNESS  
Pitlochry to Killiecrankie

Drawing title  
**Environmental Statement  
Noise Level Difference Contour Map  
(Ground Floor) Do-Minimum Baseline Year  
Vs Do-Something Future Assessment Year  
(with Mitigation) Sheet 2 of 4**

Drawing Status	FINAL
Scale	1:10,000 @ A3 DO NOT SCALE
Jacobs No.	B2140004
BIM No.	
Drawing number	Figure 17.12b
Rev	0

This drawing is not to be used in whole or part other than for the intended purpose and project as defined on this drawing. Refer to the contract for full terms and conditions.





**Figure 17.12c**

**Legend**

- Proposed scheme (DMRB Stage 3 design)
- SuDS
- Noise and vibration study area
- Noise and vibration calculation area
- Area of low noise road surfacing (LNRS)
- Noise mitigation barrier
- Health and education buildings
- Baseline noise monitoring locations - sample receptors

**Do-Minimum Baseline Year Vs Do-Something Future Assessment Year with Mitigation (LA10,18hr Free-field) Ground Floor x = noise level**

- $x \geq 10$  dB
- $5 \leq x < 10$  dB
- $3 \leq x < 5$  dB
- $0 < x < 3$  dB
- $x = 0$  dB
- $-3 < x < 0$  dB
- $-5 < x \leq -3$  dB
- $-10 < x \leq -5$  dB
- $x \leq -10$  dB

Rev.	Rev. Date	Purpose of revision	Orig/Dwn	Check'd	Rev'd	Apprv'd
0	DEC 2017	ES Publication	EM	SG	BM	AJG

**JACOBS**  
95 Bothwell Street, Glasgow, G2 7HX, UK.  
Tel: +44(0)141 243 8000  
www.jacobs.com

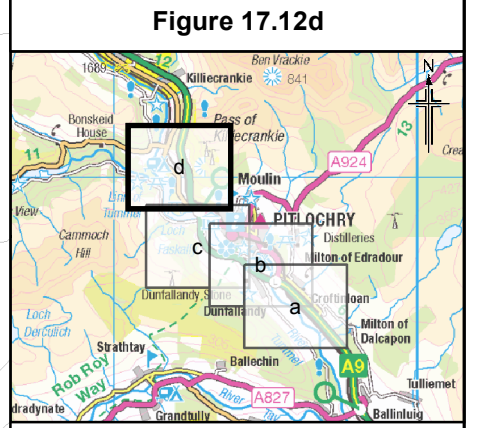
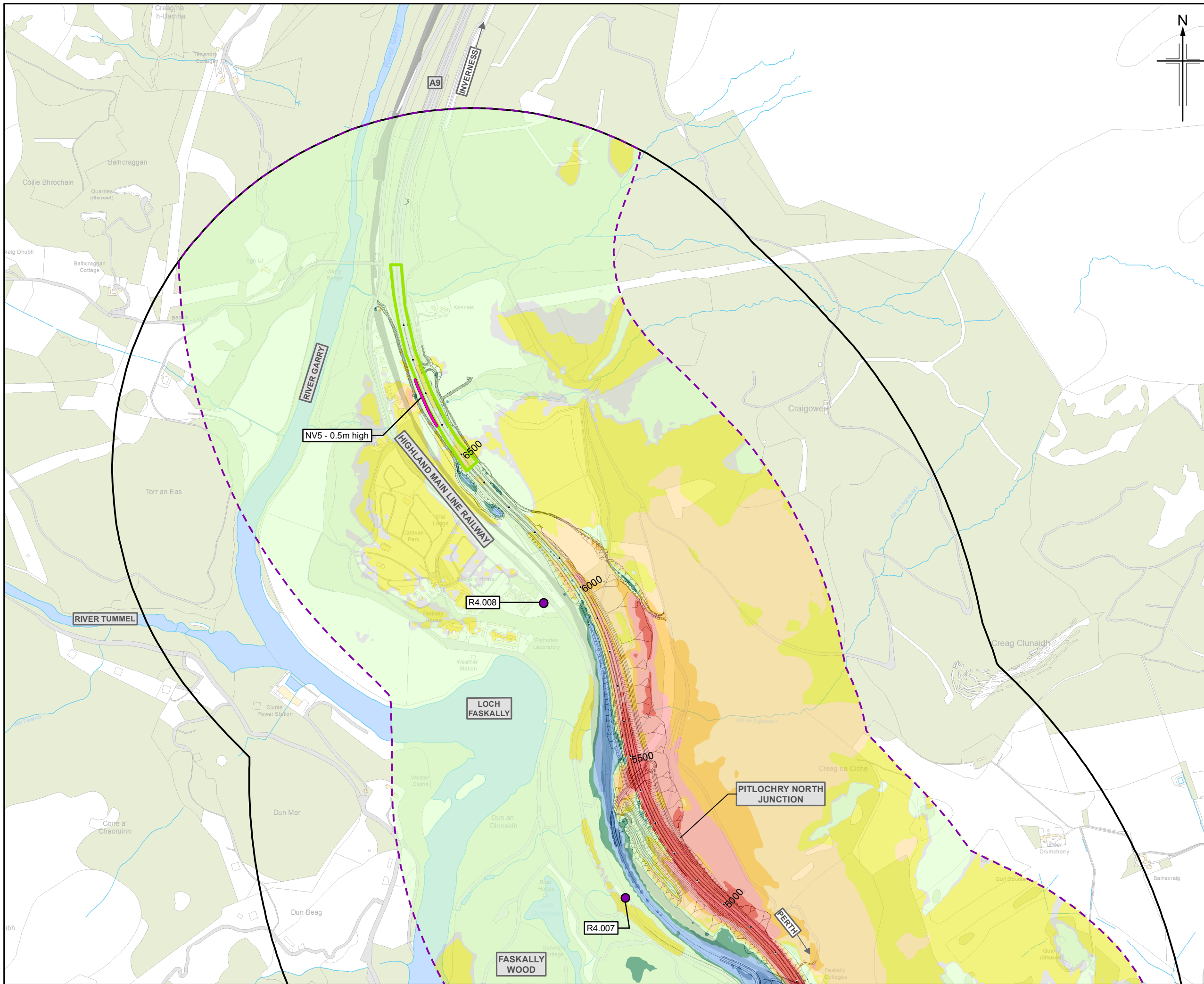
Client: **TRANSPORT SCOTLAND**  
COBHIDHAL ALBA

Project: **A9 DUALLING**  
PERTH TO INVERNESS  
Pitlochry to Killiecrankie

Drawing title: **Environmental Statement  
Noise Level Difference Contour Map  
(Ground Floor) Do-Minimum Baseline Year  
Vs Do-Something Future Assessment Year  
(with Mitigation) Sheet 3 of 4**

Drawing Status	FINAL
Scale	1:10,000 @ A3 DO NOT SCALE
Jacobs No.	B2140004
BIM No.	
Drawing number	Figure 17.12c
Rev	0

This drawing is not to be used in whole or part other than for the intended purpose and project as defined on this drawing. Refer to the contract for full terms and conditions.



**Legend**

- Proposed scheme (DMRB Stage 3 design)
- SuDS
- Noise and vibration study area
- Noise and vibration calculation area
- Area of low noise road surfacing (LNRS)
- Noise mitigation barrier
- Health and education buildings
- Baseline noise monitoring locations - sample receptors

**Do-Minimum Baseline Year Vs Do-Something Future Assessment Year with Mitigation (LA10,18hr Free-field) Ground Floor**  
 $x = \text{noise level}$

- $x \geq 10 \text{ dB}$
- $5 \leq x < 10 \text{ dB}$
- $3 \leq x < 5 \text{ dB}$
- $0 < x < 3 \text{ dB}$
- $x = 0 \text{ dB}$
- $-3 < x < 0 \text{ dB}$
- $-5 < x \leq -3 \text{ dB}$
- $-10 < x \leq -5 \text{ dB}$
- $x \leq -10 \text{ dB}$

0	DEC 2017	ES Publication	EM	SG	BM	AJG
Rev.	Rev. Date	Purpose of revision	Orig/Dwn	Checkd	Rev'd	Apprv'd

**JACOBS**  
 95 Bothwell Street, Glasgow, G2 7HX, UK.  
 Tel: +44(0)141 243 8000  
 www.jacobs.com

Client  
  
 TRANSPORT SCOTLAND  
 COIMHIGHEAL ALBA

Project  
  
**A9**  
 DUALLING  
 PERTH TO INVERNESS  
 Pitlochry to Killiecrankie

Drawing title  
**Environmental Statement**  
**Noise Level Difference Contour Map**  
**(Ground Floor) Do-Minimum Baseline Year**  
**Vs Do-Something Future Assessment Year**  
**(with Mitigation) Sheet 4 of 4**

Drawing Status	FINAL
Scale	1:10,000 @ A3 DO NOT SCALE
Jacobs No.	B2140004
BIM No.	
Drawing number	Figure 17.12d
Rev	0