

Legend

- Proposed scheme (DMRB Stage 3 design)
- SuDS
- Noise and vibration study area
- Noise and vibration calculation area
- Area of low noise road surfacing (LNRS)
- Noise mitigation barrier
- Health and education buildings
- Baseline noise monitoring locations - sample receptors

Do-Minimum Baseline Year Vs Do-Something Future Assessment Year with Mitigation (LA10,18hr Free-field) First Floor
 $x = \text{noise level}$

- $x \geq 10 \text{ dB}$
- $5 \leq x < 10 \text{ dB}$
- $3 \leq x < 5 \text{ dB}$
- $0 < x < 3 \text{ dB}$
- $x = 0 \text{ dB}$
- $-3 < x < 0 \text{ dB}$
- $-5 < x \leq -3 \text{ dB}$
- $-10 < x \leq -5 \text{ dB}$
- $x \leq -10 \text{ dB}$

Rev.	Rev. Date	Purpose of revision	Orig/Dwn	Checked	Rev'd	Apprv'd
0	DEC 2017	ES Publication	EM	SG	BM	AJG

JACOBS
 95 Bothwell Street, Glasgow, G2 7HX, UK.
 Tel: +44(0)141 243 8000
 www.jacobs.com

Client

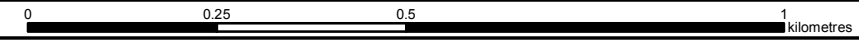
 TRANSPORT SCOTLAND
 COBHIDHAL ALBA

Project

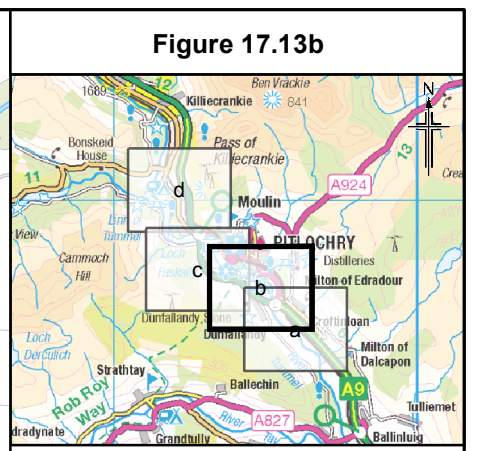
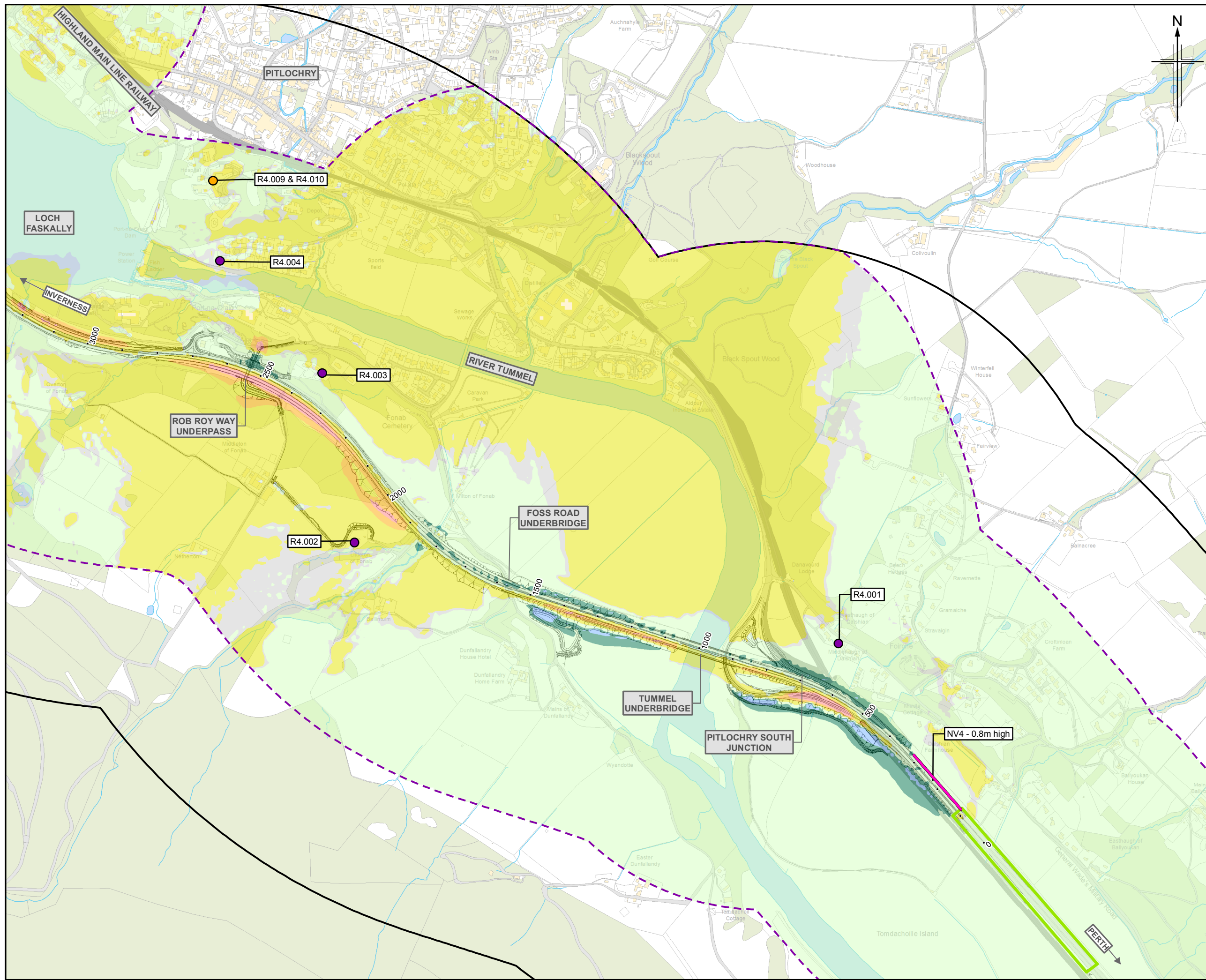
A9
 DUALLING
 PERTH TO INVERNESS
 Pitlochry to Killiecrankie

Drawing title
Environmental Statement
Noise Level Difference Contour Map
(First Floor) Do-Minimum Baseline Year Vs
Do-Something Future Assessment Year
(with Mitigation) Sheet 1 of 4

Drawing Status	FINAL		
Scale	1:10,000	@ A3	DO NOT SCALE
JACOBS No.	B2140004		
BIM No.			
Drawing number	Figure 17.13a		Rev 0



This drawing is not to be used in whole or part other than for the intended purpose and project as defined on this drawing. Refer to the contract for full terms and conditions.



Legend

- Proposed scheme (DMRB Stage 3 design)
- SuDS
- Noise and vibration study area
- Noise and vibration calculation area
- Area of low noise road surfacing (LNRS)
- Noise mitigation barrier
- Health and education buildings
- Baseline noise monitoring locations - sample receptors

Do-Minimum Baseline Year Vs Do-Something Future Assessment Year with Mitigation (LA10,18hr Free-field) First Floor x = noise level

- x ≥ 10 dB
- 5 ≤ x < 10 dB
- 3 ≤ x < 5 dB
- 0 < x < 3 dB
- x = 0 dB
- 3 < x < 0 dB
- 5 < x ≤ -3 dB
- 10 < x ≤ -5 dB
- x ≤ -10 dB

Rev.	Rev. Date	Purpose of revision	Orig/Drawn	Checked	Rev'd	Apprv'd
0	DEC 2017	ES Publication	EM	SG	BM	AJG

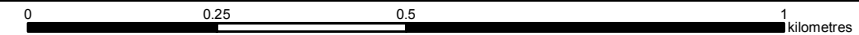
JACOBS
95 Bothwell Street, Glasgow, G2 7HX, UK.
Tel: +44(0)141 243 8000
www.jacobs.com

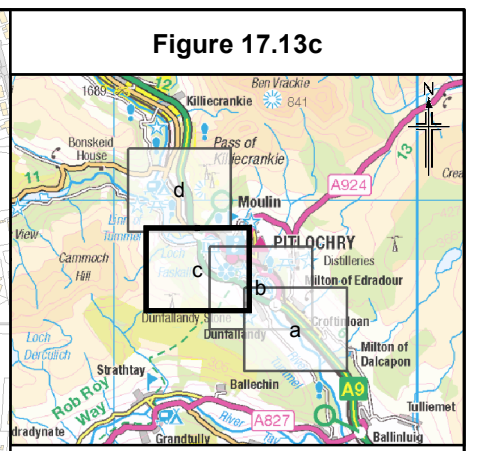
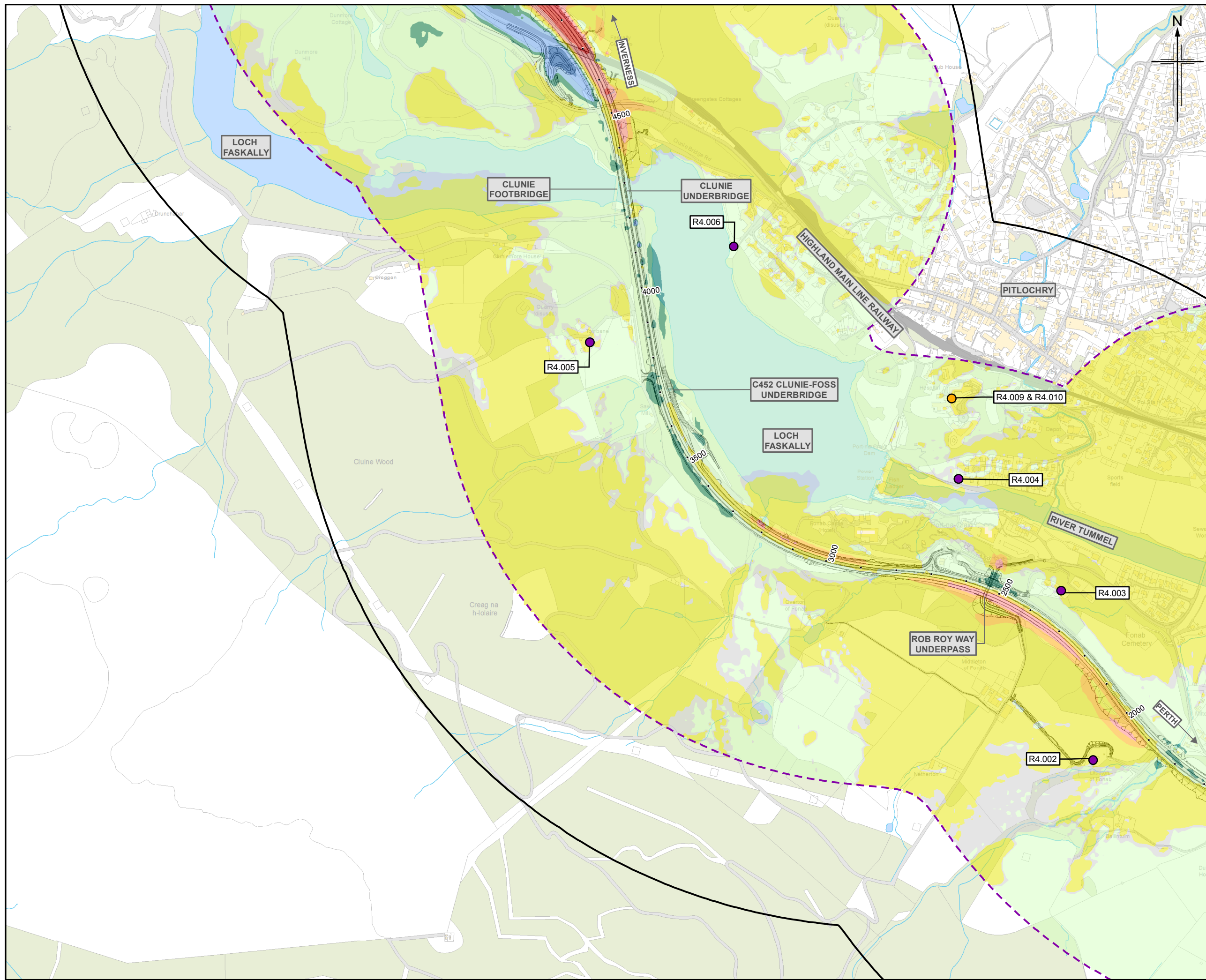
Client
TRANSPORT SCOTLAND
CORRIDOR ALBA

Project
A9 DUALLING
PERTH TO INVERNESS
Pitlochry to Killiecrankie

Drawing title
**Environmental Statement
Noise Level Difference Contour Map
(First Floor) Do-Minimum Baseline Year Vs
Do-Something Future Assessment Year
(with Mitigation) Sheet 2 of 4**

Drawing Status	FINAL
Scale	1:10,000 @ A3 DO NOT SCALE
Jacobs No.	B2140004
BIM No.	
Drawing number	Figure 17.13b
Rev	0





Legend

- Proposed scheme (DMRB Stage 3 design)
- SuDS
- Noise and vibration study area
- Noise and vibration calculation area
- Area of low noise road surfacing (LNRS)
- Noise mitigation barrier
- Health and education buildings
- Baseline noise monitoring locations - sample receptors

Do-Minimum Baseline Year Vs Do-Something Future Assessment Year with Mitigation (LA_{10,18hr} Free-field) First Floor
 $x = \text{noise level}$

- $x \geq 10$ dB
- $5 \leq x < 10$ dB
- $3 \leq x < 5$ dB
- $0 < x < 3$ dB
- $x = 0$ dB
- $-3 < x < 0$ dB
- $-5 < x \leq -3$ dB
- $-10 < x \leq -5$ dB
- $x \leq -10$ dB

0	DEC 2017	ES Publication	EM	SG	BM	AJG
Rev.	Rev. Date	Purpose of revision	Orig/Dwn	Check'd	Rev'd	Apprv'd

JACOBS
 95 Bothwell Street, Glasgow, G2 7HX, UK.
 Tel: +44(0)141 243 8000
 www.jacobs.com

Client

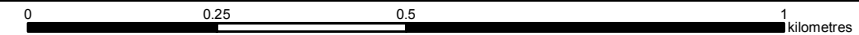
 TRANSPORT SCOTLAND
 COBHIDHAL ALBA

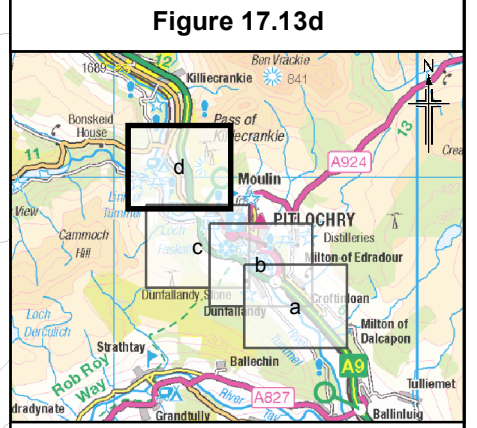
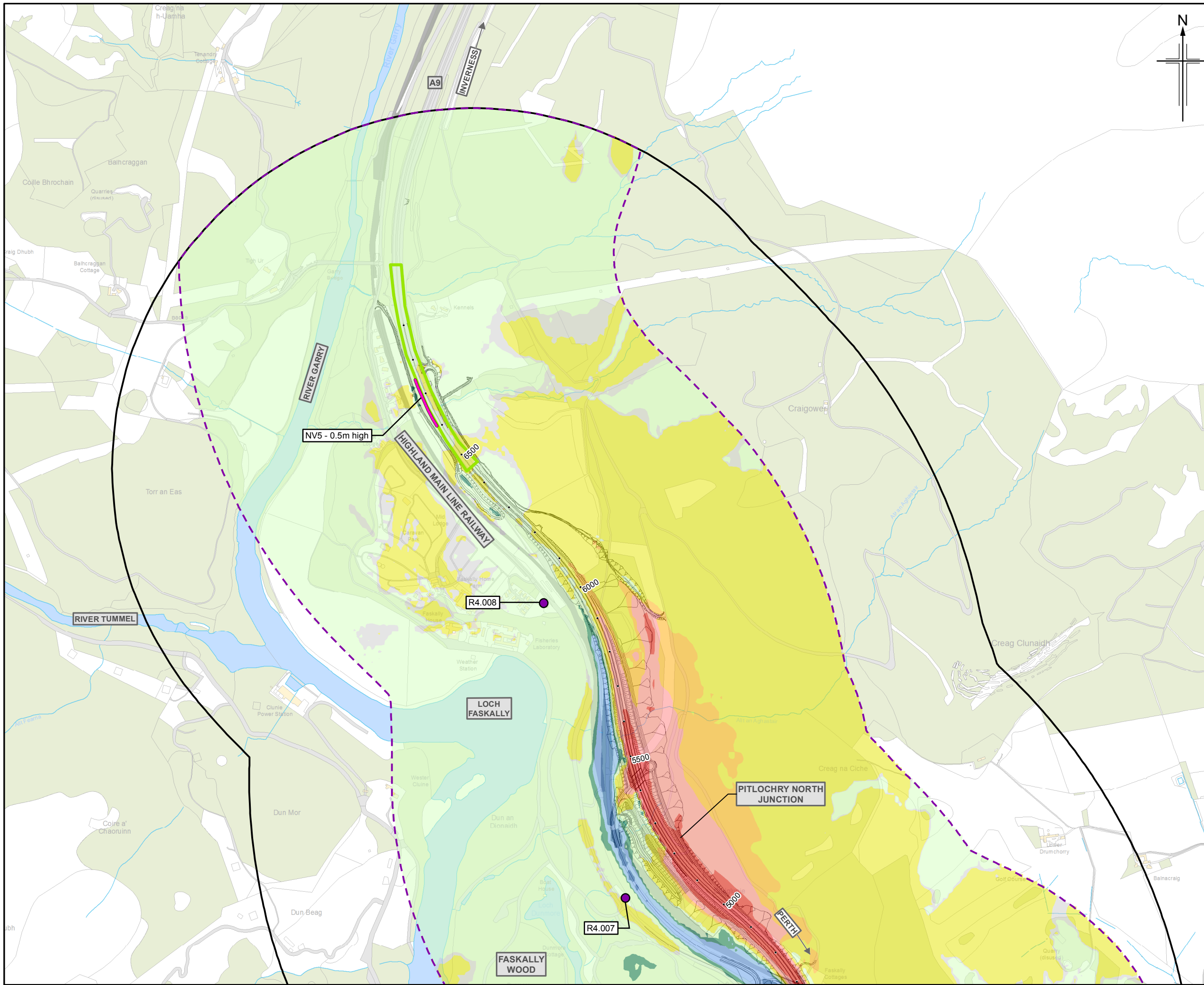
Project

A9
 DUALLING
 PERTH TO INVERNESS
 Pitlochry to Killiecrankie

Drawing title
Environmental Statement
Noise Level Difference Contour Map
(First Floor) Do-Minimum Baseline Year Vs
Do-Something Future Assessment Year
(with Mitigation) Sheet 3 of 4

Drawing Status	FINAL		
Scale	1:10,000	@ A3	DO NOT SCALE
Jacobs No.	B2140004		
BIM No.			
Drawing number	Figure 17.13c		Rev 0





Legend

- Proposed scheme (DMRB Stage 3 design)
- SuDS
- Noise and vibration study area
- Noise and vibration calculation area
- Area of low noise road surfacing (LNRS)
- Noise mitigation barrier
- Health and education buildings
- Baseline noise monitoring locations - sample receptors

Do-Minimum Baseline Year Vs Do-Something Future Assessment Year with Mitigation (LA10,18hr Free-field) First Floor
 $x = \text{noise level}$

- $x \geq 10 \text{ dB}$
- $5 \leq x < 10 \text{ dB}$
- $3 \leq x < 5 \text{ dB}$
- $0 < x < 3 \text{ dB}$
- $x = 0 \text{ dB}$
- $-3 < x < 0 \text{ dB}$
- $-5 < x \leq -3 \text{ dB}$
- $-10 < x \leq -5 \text{ dB}$
- $x \leq -10 \text{ dB}$

Rev.	Date	Purpose of revision	Orig/Dwn	Check'd	Rev'd	Apprv'd
0	DEC 2017	ES Publication	EM	SG	BM	AJG

JACOBS
 95 Bothwell Street, Glasgow, G2 7HX, UK.
 Tel: +44(0)141 243 8000
 www.jacobs.com

Client

 TRANSPORT SCOTLAND
 COIMHIGHAL ALBA

Project

A9
 DUALLING
 PERTH TO INVERNESS
 Pitlochry to Killiecrankie

Drawing title
Environmental Statement
Noise Level Difference Contour Map
(First Floor) Do-Minimum Baseline Year Vs
Do-Something Future Assessment Year
(with Mitigation) Sheet 4 of 4

Drawing Status	FINAL
Scale	1:10,000 @ A3 DO NOT SCALE
Jacobs No.	B2140004
BIM No.	
Drawing number	Figure 17.13d
Rev	0