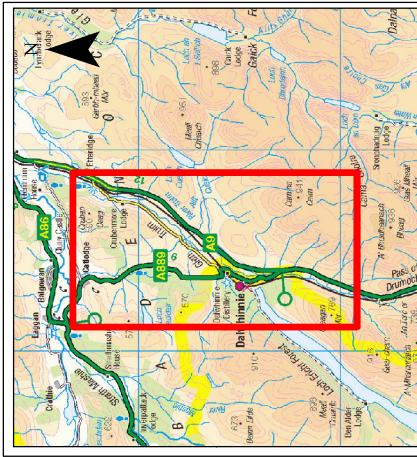


All Travellers

Drawing No.	Drawing Type	Drawing Title	Projectwise Drawing Reference	Software
9.1	BASELINE PLAN	OVERVIEW	A9P08-CFJ-EGN-J_ZZZZZ_ZZ-DR-EN-0007	GIS
9.2	BASELINE PLAN	VIEWS FROM THE ROAD	A9P08-CFJ-EGN-J_ZZZZZ_ZZ-DR-EN-0015	GIS
9.3	ASSESSMENT PLAN	VIEWS FROM THE ROAD PROPOSED SCHEME	A9P08-CFJ-EGN-J_ZZZZZ_ZZ-DR-EN-0016	GIS
9.4	ASSESSMENT PLAN	NMUs chainage 0 to 20000	A9P08-CFJ-EGN-J_ML000_ZZ-DR-EN-0004	GIS
9.5	ASSESSMENT PLAN	NMUs chainage 20000 to 23000	A9P08-CFJ-EGN-J_ML200_ZZ-DR-EN-0004	GIS
9.6	ASSESSMENT PLAN	NMUs chainage 22000 to 25400	A9P08-CFJ-EGN-J_ML220_ZZ-DR-EN-0003	GIS
9.7	ASSESSMENT PLAN	NMUs chainage 25200 to 28400	A9P08-CFJ-EGN-J_ML252_ZZ-DR-EN-0003	GIS
9.8	ASSESSMENT PLAN	NMUs chainage 28200 to 31050	A9P08-CFJ-EGN-J_ML282_ZZ-DR-EN-0003	GIS



Legend

- - - Proposed Scheme Extents
 - Existing Dualled
 - Existing Single
 - Highland Mainline railway
 - Bus Lay-by
 - Type A Lay-by
 - Type B Lay-by
 - Crossing Points (CP)
 - ★ Informal Parking
 - ★ Truim Cottage
 - ★ Crubenmore Lodge
 - ★ Village Hall
 - ★ Railway Station
 - ★ School (closed)
 - ★ Cafe
 - ★ Hotel
 - 1km Assessment Study
 - Wider 3km Study Area
 - Outdoor Areas (including Munros, Corbetts and Lochs)
- NMU (non-motorised user) Routes**
- NCN7 (Off-Road)
 - NCN7 (On-Road)
 - THC Core Path
 - CNPA Core Path
 - Hill Walking Routes
 - CNPA Community Path
 - Informal Routes

SCALE 1:35000

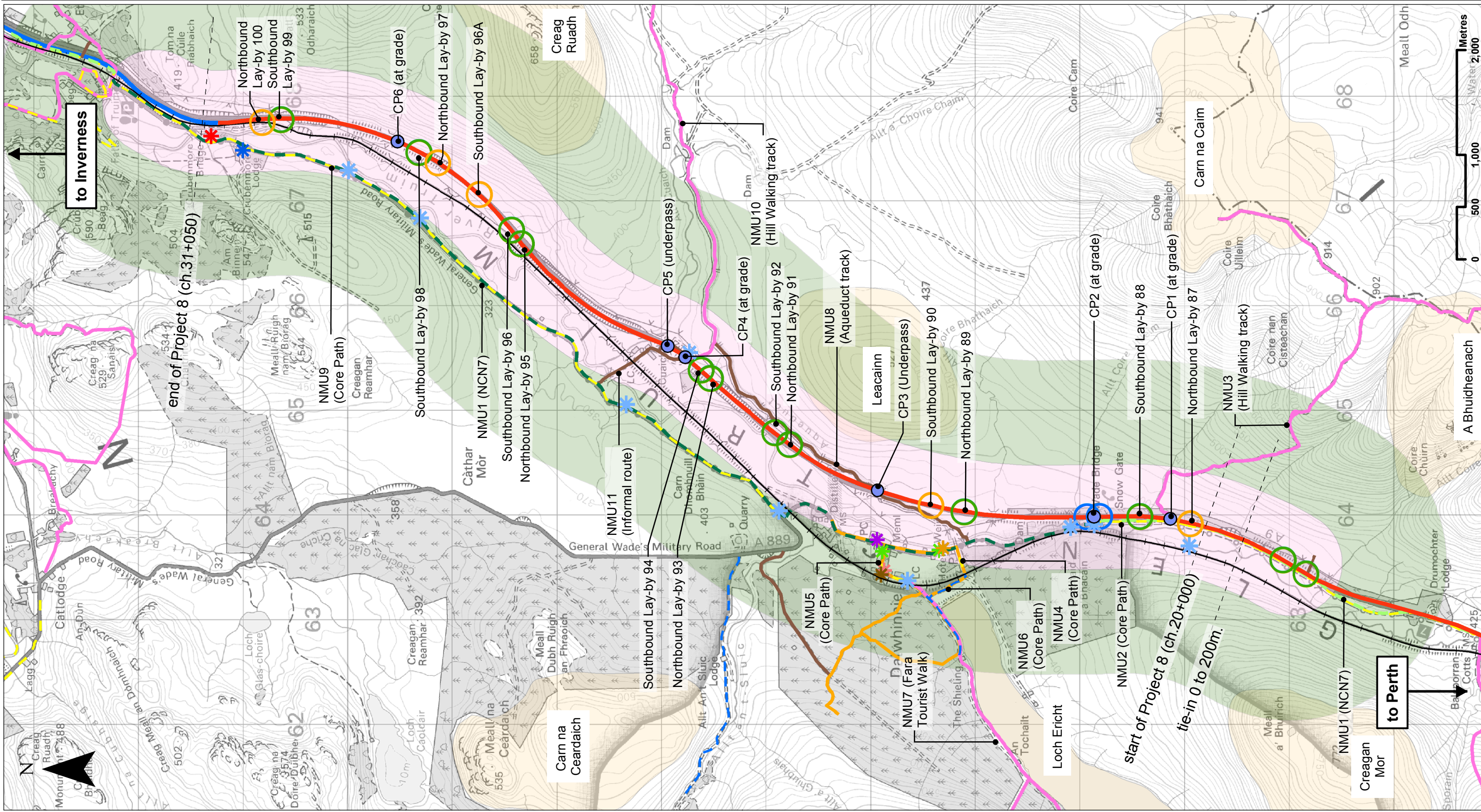
NO	DATE	DESCRIPTION	BY	APP	
004	NOV 2017	FINAL REVISIONS	ST	JF	
003	SEP 2017	INTERNAL REVISIONS	JC	JF	
002	AUG 2017	DESIGN UPDATE	JC	JF	
001	MAR 2017	DRAFT FOR COMMENT	JC	JF	
REV	SUIT	DATE	DESCRIPTION	BY	APP

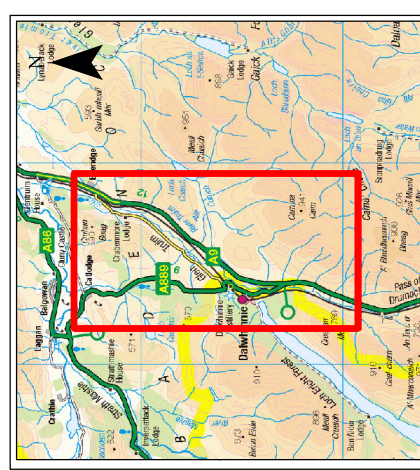
ch2m FAIRHURST
 CIVIL & STRUCTURAL
 1000 GLENFARROW ROAD
 GLENFARROW, MIDLOTHIAN, SCOTLAND
 TEL: +44 (0) 141 552 2000 FAX: +44 (0) 141 552 2825



PROJECT 8 DALWHINNIE TO CRUBENMORE EIA
BASELINE PLAN
DRAWING 9.1
ALL TRAVELLERS - OVERVIEW

DESIGN: LF	DRAWN: ST	CHK: SWG	APP: JF
DATE: 07/12/2017	REVISION: C01	SHEET: 1 OF 1	SUITABILITY: A3





Legend

- Proposed Scheme Extents
- Highland Mainline railway
- Lay-by Viewpoints

Views

- No View
- Restricted View
- Intermittent View
- Open View
- Landform
- Screening
- Vistas

SCALE 1:35000

REV	SUIT	DATE	DESCRIPTION	BY	APP
P03	S3	NOV 2017	FINAL REVISIONS	ST	JF
P02	S3	SEPT 2017	INTERNAL REVISIONS	JC	JF
P01	S3	AUG 2017	DESIGN UPDATE	JC	JF

ch2m **fairhurst**

CROWNAL ENGINEERS LTD
 200, 201, 202, 203, 204, 205, 206, 207, 208, 209, 210, 211, 212, 213, 214, 215, 216, 217, 218, 219, 220, 221, 222, 223, 224, 225, 226, 227, 228, 229, 230, 231, 232, 233, 234, 235, 236, 237, 238, 239, 240, 241, 242, 243, 244, 245, 246, 247, 248, 249, 250, 251, 252, 253, 254, 255, 256, 257, 258, 259, 260, 261, 262, 263, 264, 265, 266, 267, 268, 269, 270, 271, 272, 273, 274, 275, 276, 277, 278, 279, 280, 281, 282, 283, 284, 285, 286, 287, 288, 289, 290, 291, 292, 293, 294, 295, 296, 297, 298, 299, 300, 301, 302, 303, 304, 305, 306, 307, 308, 309, 310, 311, 312, 313, 314, 315, 316, 317, 318, 319, 320, 321, 322, 323, 324, 325, 326, 327, 328, 329, 330, 331, 332, 333, 334, 335, 336, 337, 338, 339, 340, 341, 342, 343, 344, 345, 346, 347, 348, 349, 350, 351, 352, 353, 354, 355, 356, 357, 358, 359, 360, 361, 362, 363, 364, 365, 366, 367, 368, 369, 370, 371, 372, 373, 374, 375, 376, 377, 378, 379, 380, 381, 382, 383, 384, 385, 386, 387, 388, 389, 390, 391, 392, 393, 394, 395, 396, 397, 398, 399, 400, 401, 402, 403, 404, 405, 406, 407, 408, 409, 410, 411, 412, 413, 414, 415, 416, 417, 418, 419, 420, 421, 422, 423, 424, 425, 426, 427, 428, 429, 430, 431, 432, 433, 434, 435, 436, 437, 438, 439, 440, 441, 442, 443, 444, 445, 446, 447, 448, 449, 450, 451, 452, 453, 454, 455, 456, 457, 458, 459, 460, 461, 462, 463, 464, 465, 466, 467, 468, 469, 470, 471, 472, 473, 474, 475, 476, 477, 478, 479, 480, 481, 482, 483, 484, 485, 486, 487, 488, 489, 490, 491, 492, 493, 494, 495, 496, 497, 498, 499, 500, 501, 502, 503, 504, 505, 506, 507, 508, 509, 510, 511, 512, 513, 514, 515, 516, 517, 518, 519, 520, 521, 522, 523, 524, 525, 526, 527, 528, 529, 530, 531, 532, 533, 534, 535, 536, 537, 538, 539, 540, 541, 542, 543, 544, 545, 546, 547, 548, 549, 550, 551, 552, 553, 554, 555, 556, 557, 558, 559, 560, 561, 562, 563, 564, 565, 566, 567, 568, 569, 570, 571, 572, 573, 574, 575, 576, 577, 578, 579, 580, 581, 582, 583, 584, 585, 586, 587, 588, 589, 590, 591, 592, 593, 594, 595, 596, 597, 598, 599, 600, 601, 602, 603, 604, 605, 606, 607, 608, 609, 610, 611, 612, 613, 614, 615, 616, 617, 618, 619, 620, 621, 622, 623, 624, 625, 626, 627, 628, 629, 630, 631, 632, 633, 634, 635, 636, 637, 638, 639, 640, 641, 642, 643, 644, 645, 646, 647, 648, 649, 650, 651, 652, 653, 654, 655, 656, 657, 658, 659, 660, 661, 662, 663, 664, 665, 666, 667, 668, 669, 670, 671, 672, 673, 674, 675, 676, 677, 678, 679, 680, 681, 682, 683, 684, 685, 686, 687, 688, 689, 690, 691, 692, 693, 694, 695, 696, 697, 698, 699, 700, 701, 702, 703, 704, 705, 706, 707, 708, 709, 710, 711, 712, 713, 714, 715, 716, 717, 718, 719, 720, 721, 722, 723, 724, 725, 726, 727, 728, 729, 730, 731, 732, 733, 734, 735, 736, 737, 738, 739, 740, 741, 742, 743, 744, 745, 746, 747, 748, 749, 750, 751, 752, 753, 754, 755, 756, 757, 758, 759, 760, 761, 762, 763, 764, 765, 766, 767, 768, 769, 770, 771, 772, 773, 774, 775, 776, 777, 778, 779, 780, 781, 782, 783, 784, 785, 786, 787, 788, 789, 790, 791, 792, 793, 794, 795, 796, 797, 798, 799, 800, 801, 802, 803, 804, 805, 806, 807, 808, 809, 810, 811, 812, 813, 814, 815, 816, 817, 818, 819, 820, 821, 822, 823, 824, 825, 826, 827, 828, 829, 830, 831, 832, 833, 834, 835, 836, 837, 838, 839, 840, 841, 842, 843, 844, 845, 846, 847, 848, 849, 850, 851, 852, 853, 854, 855, 856, 857, 858, 859, 860, 861, 862, 863, 864, 865, 866, 867, 868, 869, 870, 871, 872, 873, 874, 875, 876, 877, 878, 879, 880, 881, 882, 883, 884, 885, 886, 887, 888, 889, 890, 891, 892, 893, 894, 895, 896, 897, 898, 899, 900, 901, 902, 903, 904, 905, 906, 907, 908, 909, 910, 911, 912, 913, 914, 915, 916, 917, 918, 919, 920, 921, 922, 923, 924, 925, 926, 927, 928, 929, 930, 931, 932, 933, 934, 935, 936, 937, 938, 939, 940, 941, 942, 943, 944, 945, 946, 947, 948, 949, 950, 951, 952, 953, 954, 955, 956, 957, 958, 959, 960, 961, 962, 963, 964, 965, 966, 967, 968, 969, 970, 971, 972, 973, 974, 975, 976, 977, 978, 979, 980, 981, 982, 983, 984, 985, 986, 987, 988, 989, 990, 991, 992, 993, 994, 995, 996, 997, 998, 999, 1000

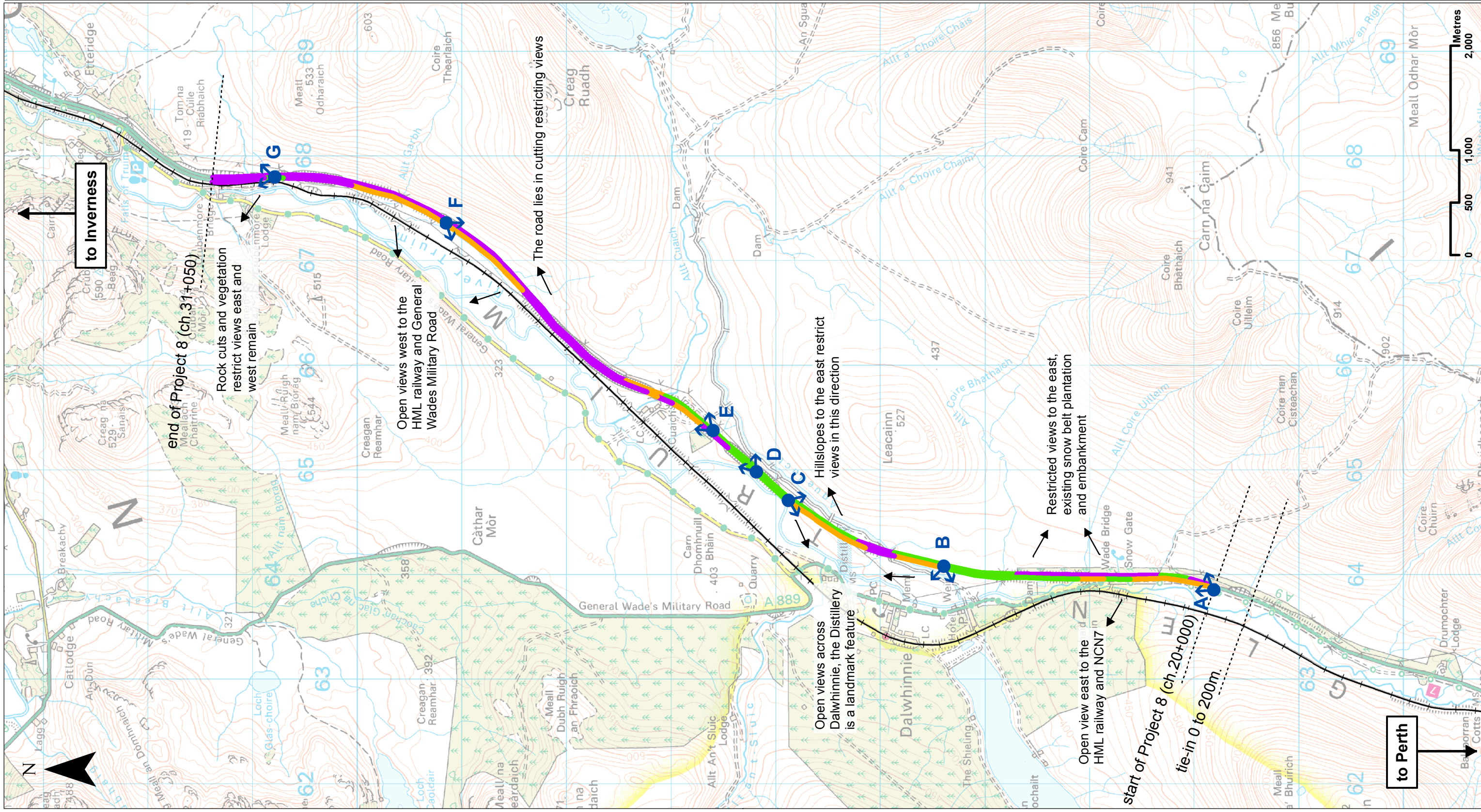


PROJECT 8 DALWHINNIE TO CRUBENMORE EIA
 BASELINE PLAN
 DRAWING 9.2

ALL TRAVELLERS - VIEWS FROM THE ROAD

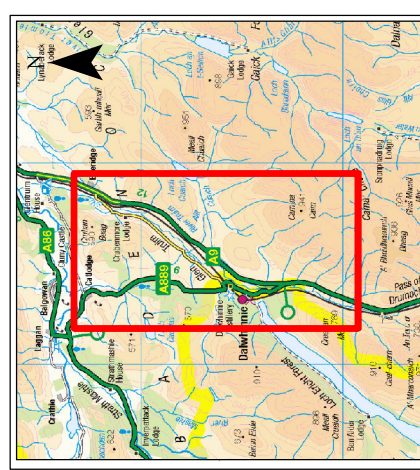
DESIGN:	LF	DRAWN:	ST	CHK:	SWG	APP:	JF
DATE:	07/12/2017						

PROJ:	465298	REVISION:	CO1	SUITABILITY:	A3
DWG:	APP08-GF-EGN-LZZZZ-ZZ-DR-EN-0015				
SHEET:	1 OF 1				



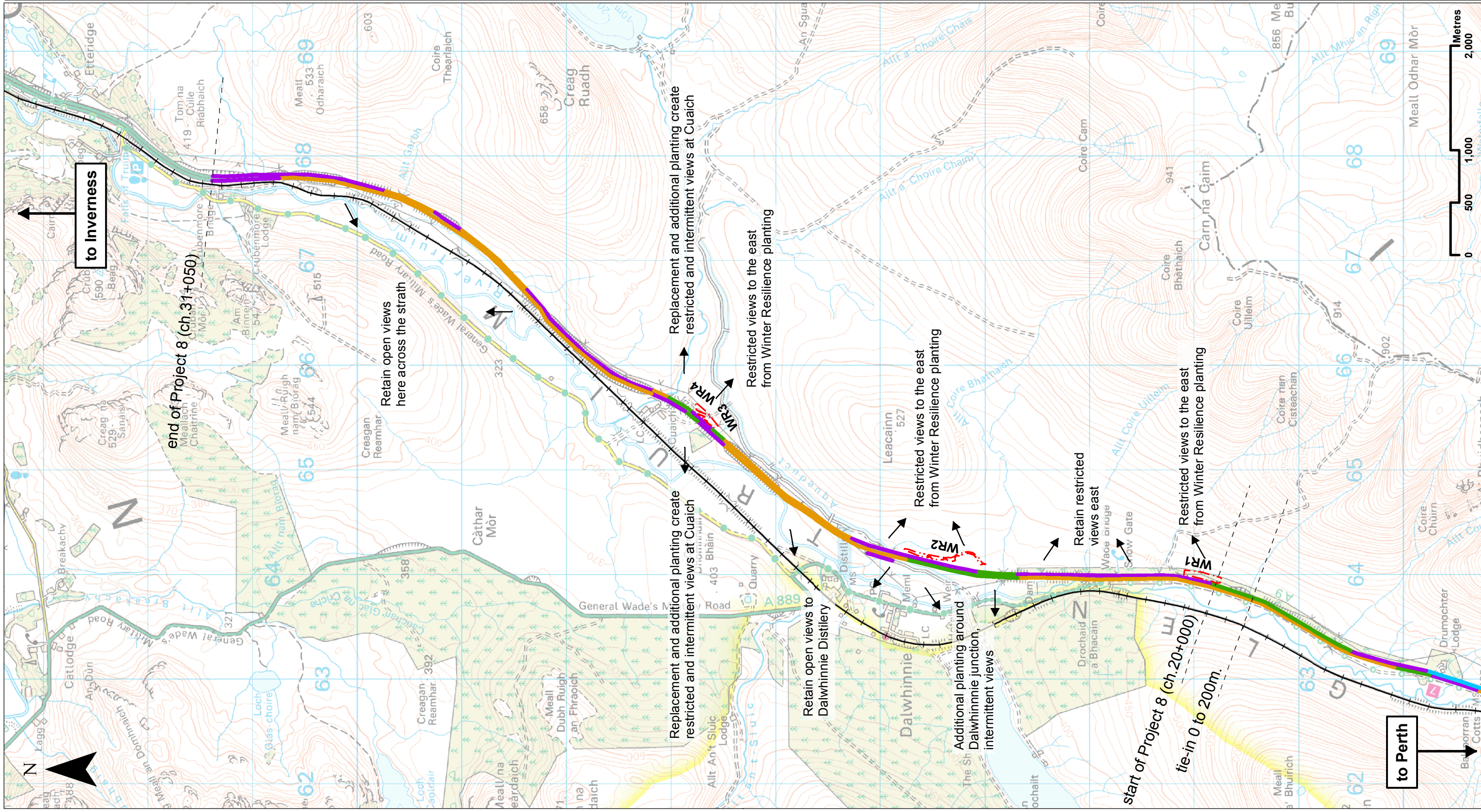
to Inverness

to Perth



Legend

- - - Proposed Scheme Extents
 - WR1 30m Winter Resilience Tree Belt (Indicative)
 - Highland Mainline railway
- Views**
- No View
 - Restricted View
 - Intermittent View
 - Open View
 - Vistas



Note:
Views from the Road are representative of the Proposed Scheme at operation years 15-25, when vegetation has become established, and shows the long term residual views from the road.

SCALE 1:35000

REV	SUIT	DATE	DESCRIPTION	BY	APP
PO3	S3	NOV 2017	FINAL REVISIONS	ST	JF
PO2	S3	SEPT 2017	INTERNAL REVISIONS	ST	JF
PO1	S3	AUG 2017	DESIGN UPDATE	JC	JF

ch2m **FAIRHURST**

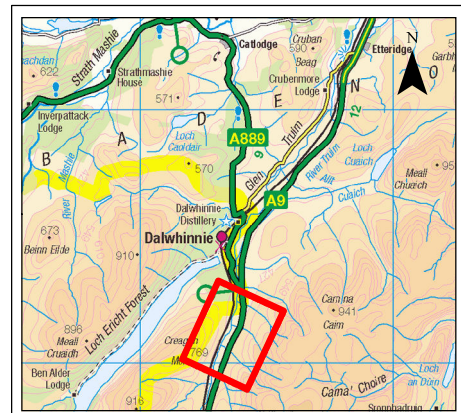
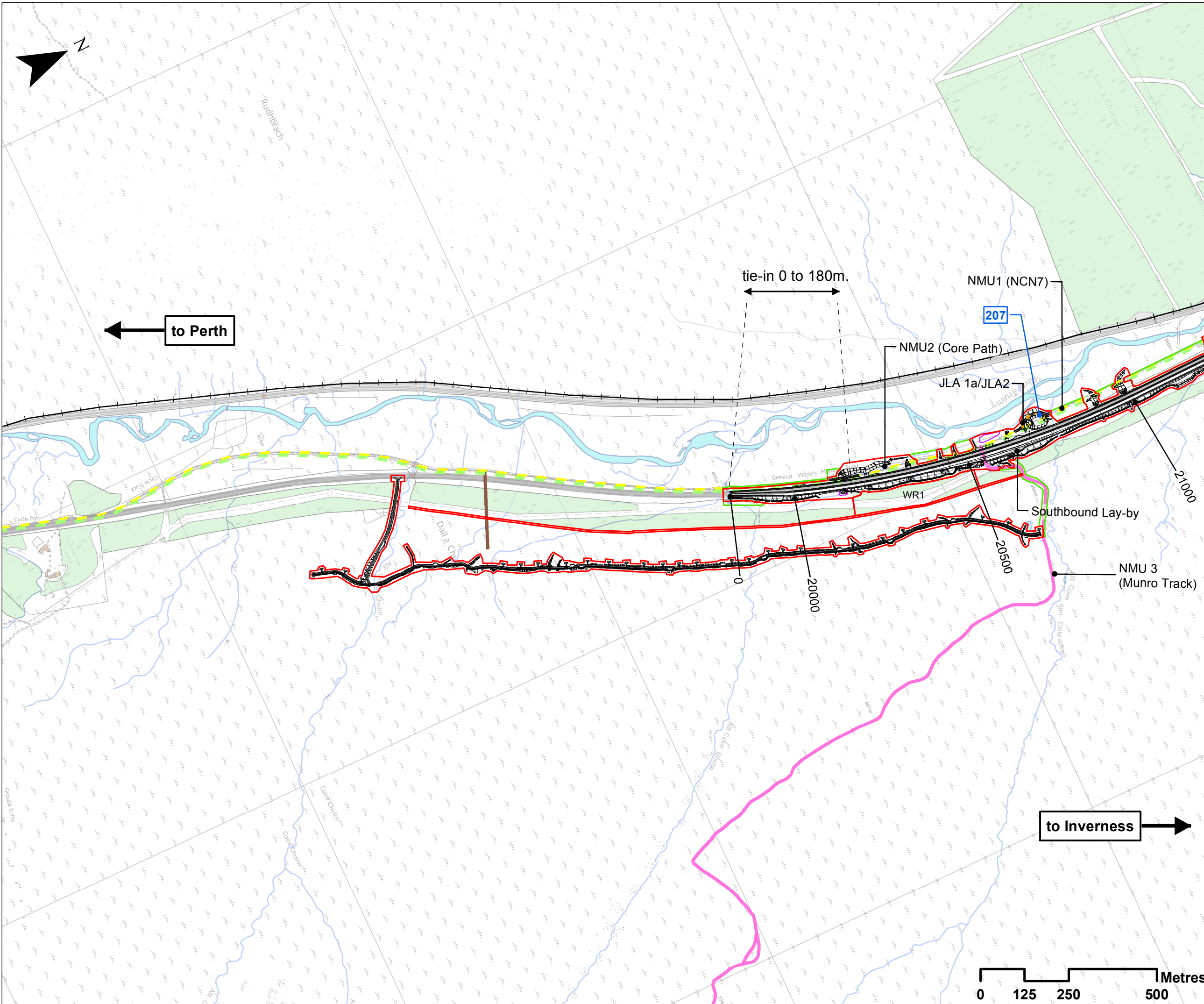
CROWNAL, Fairhurst St,
C/O: City Park, 988 Alexandra Parade Glasgow G3 7AU
Tel + 44 (0) 141 552 2000 Fax +44 (0) 141 552 2825



**PROJECT 8 DALWHINNIE TO CRUBENMORE EIA
ASSESSMENT PLAN
DRAWING 9.3
ALL TRAVELLERS - VIEWS FROM THE ROAD
PROPOSED SCHEME**

DESIGN: LF	DRAWN: ST	CHK: SWG	APP: JF
---------------	--------------	-------------	------------

DATE: 07/12/2017	REVISION: CO1	SUITABILITY: A3
------------------	------------------	--------------------



- ### Legend
- Proposed Scheme Detail
 - Compensatory Storage Areas
 - 200 SuDS ID
 - Assessment Boundary - Permanent Works
 - Assessment Boundary - Temporary Works
 - WR1 30m Winter Resilience Tree Belt (Indicative)
 - Potential new journey length
 - ⊢ Highland Mainline railway
 - NMU (non-motorised user) Routes**
 - NCN7 (Off-Road)
 - CNPA Core Path
 - Hill Walking Routes
 - Informal Routes

Note:
JLA refers to Journey Length Assessment and should be read in conjunction with Table 9-15 of chapter 9.

SCALE 1:10000

REV	SUI	DATE	DESCRIPTION	BY	APP
P04	S3	NOV 2017	FINAL REVISIONS	ST	JF
P03	S3	SEPT 2017	INTERNAL REVISIONS	ST	JF
P02	S3	AUG 2017	DESIGN UPDATE	ST	JF
P01	S3	MAR 2017	DRAFT FOR COMMENT	ST	JF

ch2m. FAIRHURST
CH2MHILL Fairhurst JV
C/O: City Park 368 Alexandra Parade Glasgow G31 3AU
Tel + 44 (0) 141 552 2000 Fax +44 (0) 141 552 2525



PROJECT 8 DALWHINNIE TO CRUBENMORE EIA ASSESSMENT PLAN
DRAWING 9.4
ALL TRAVELLERS - NMUs
chainage 0 to 2000

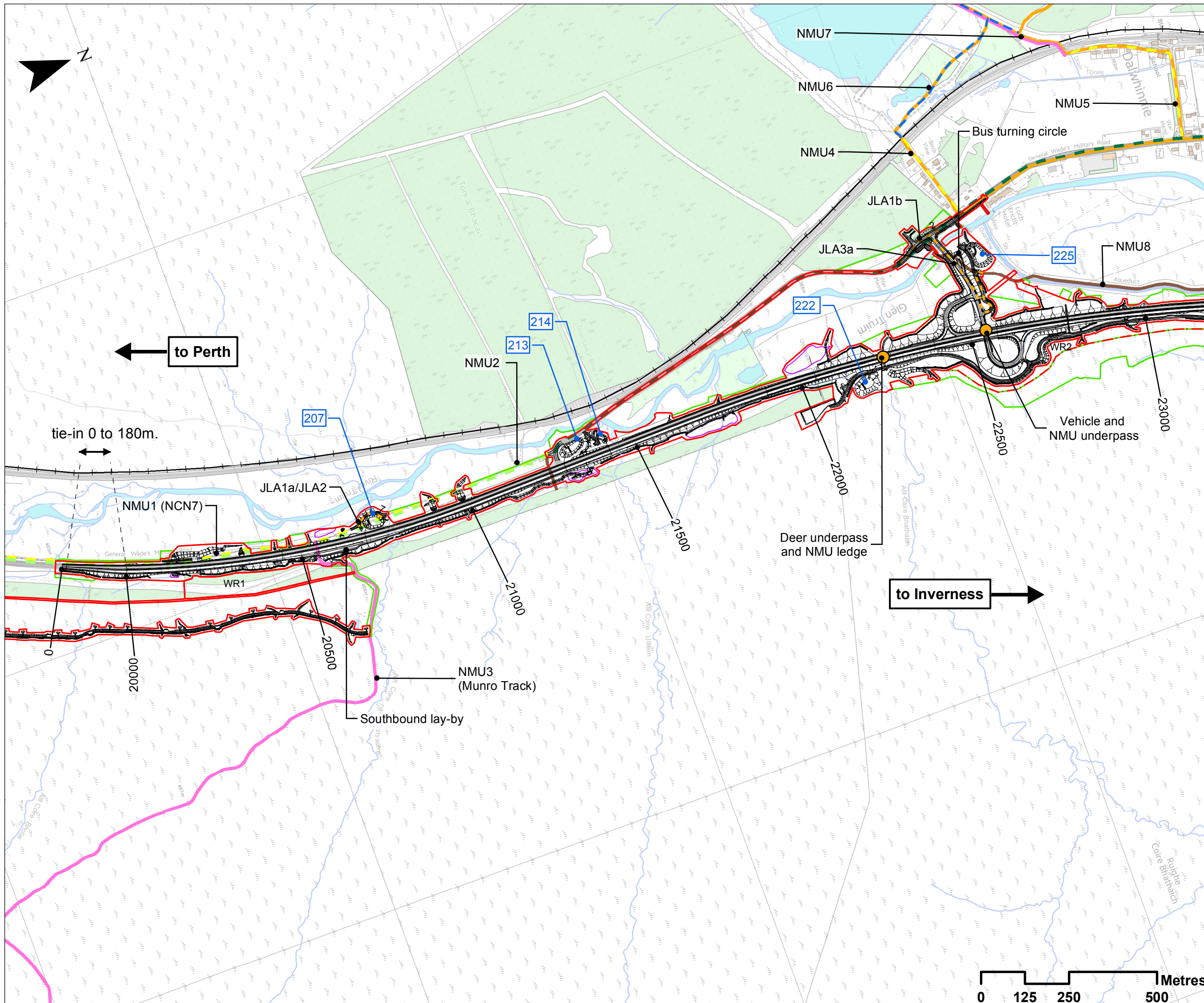
DESIGN: LF	DRAWN: ST	CHK: SWG	APP: JF
---------------	--------------	-------------	------------

DATE: 07/12/2017
PROJ: 495298

DWG: A9P08-CFJ-EGN-J-ML000-ZZ-DR-EN-0004

SHEET: 1 OF 5	REVISION: C01	SUITABILITY: A3
------------------	------------------	--------------------

Document Path: J:\91616161\Stage_3\91616161\Chapter_9_A9\Travelers_P08_Figure_9.4.mxd



- ### Legend
- Proposed Scheme Detail
 - ▭ Compensatory Storage Areas
 - 200 SuDS ID
 - ▭ Assessment Boundary - Permanent Works
 - ▭ Assessment Boundary - Temporary Works
 - WR1 30m Winter Resilience Tree Belt (Indicative)
 - Proposed Crossing Point (CP)
 - Potential new journey length
 - Highland Mainline railway
- ### NMU (non-motorised user) Routes
- ▬ NCN7 (Off-Road)
 - ▬ NCN7 (On-Road)
 - ▬ THC Core Path
 - ▬ CNPA Core Path
 - ▬ Hill Walking Routes
 - ▬ CNPA Community Path
 - ▬ Informal Routes

Note:
JLA refers to Journey Length Assessment and should be read in conjunction with Table 9-15 of Chapter 9.

SCALE 1:10000

REV	SUI	DATE	DESCRIPTION	BY	APP
P04	S3	NOV 2017	FINAL REVISIONS	ST	JF
P03	S3	SEPT 2017	INTERNAL REVISIONS	ST	JF
P02	S3	AUG 2017	DESIGN UPDATE	ST	JF
P01	S3	MAR 2017	DRAFT FOR COMMENT	ST	JF

ch2m FAIRHURST
 CH2MHILL Fairhurst JV
 C/O: City Park 368 Alexandra Parade Glasgow G31 3AU
 Tel + 44 (0) 141 552 2000 Fax +44 (0) 141 552 2525



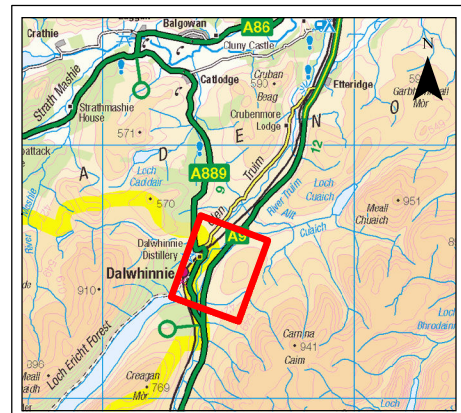
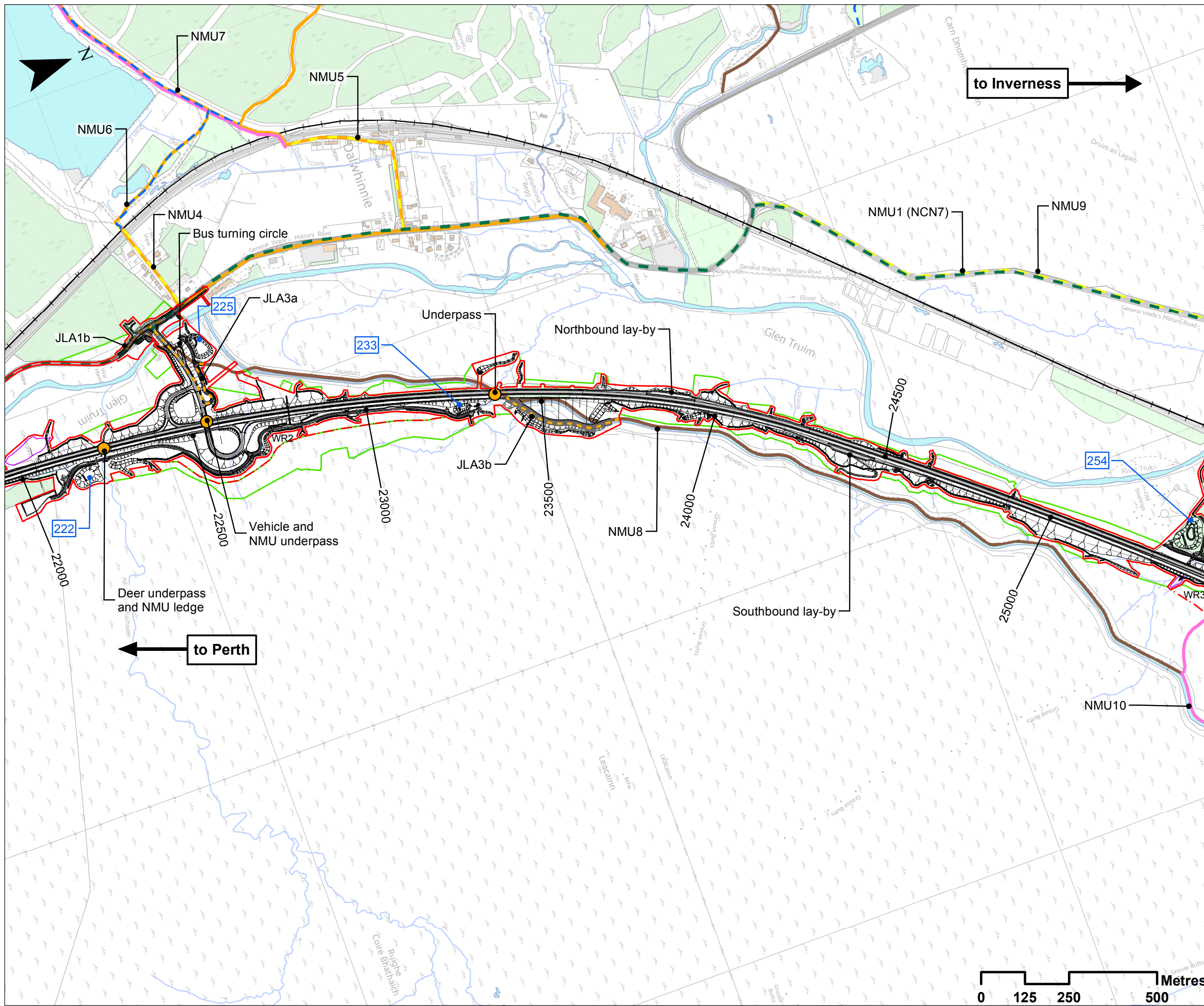
PROJECT 8 DALWHINNIE TO CRUBENMORE EIA
ASSESSMENT PLAN
DRAWING 9.5
ALL TRAVELLERS - NMUs
chainage 20000 to 23000

DESIGN: LF	DRAWN: ST	CHK: SWG	APP: JF
---------------	--------------	-------------	------------

DATE: 07/12/2017
 PROJ: 495298

DWG: A9P08-CFJ-EGN-J-ML200-ZZ-DR-EN-0004

SHEET: 2 OF 5	REVISION: C01	SUITABILITY: A3
------------------	------------------	--------------------



Legend

- Proposed Scheme Detail
- Compensatory Storage Areas
- 200 SuDS ID
- Assessment Boundary - Permanent Works
- Assessment Boundary - Temporary Works
- WR1 30m Winter Resilience Tree Belt (Indicative)
- Potential new journey length
- Proposed Crossing Point (CP)
- Highland Mainline Railway
- NMU (non-motorised user) Routes**
- NCN7 (On-Road)
- THC Core Path
- CNPA Core Path
- Hill Walking Routes
- CNPA Community Path
- Informal Routes

Note:
JLA refers to Journey Length Assessment and should be read in conjunction with Table 9-15 of Chapter 9.

SCALE 1:10000

P04	S3	NOV 2017	FINAL REVISIONS	ST	JF
P03	S3	SEPT 2017	INTERNAL REVISIONS	ST	JF
P02	S3	AUG 2017	DESIGN UPDATE	ST	JF
P01	S3	MAR 2017	DRAFT FOR COMMENT	ST	JF
REV	SUI	DATE	DESCRIPTION	BY	APP

ch2m FAIRHURST

CH2MHILL Fairhurst JV
C/O: City Park 368 Alexandra Parade Glasgow G31 3AU
Tel + 44 (0) 141 552 2000 Fax +44 (0) 141 552 2525



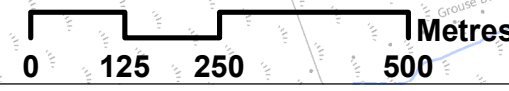
**PROJECT 8 DALWHINNIE TO CRUBENMORE EIA
ASSESSMENT PLAN
DRAWING 9.6
ALL TRAVELLERS - NMUs
chainage 22000 to 25400**

DESIGN: LF	DRAWN: ST	CHK: SWG	APP: JF
---------------	--------------	-------------	------------

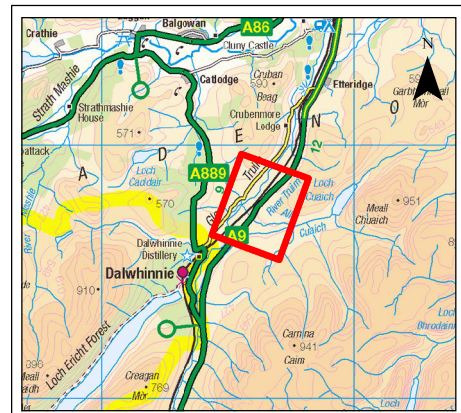
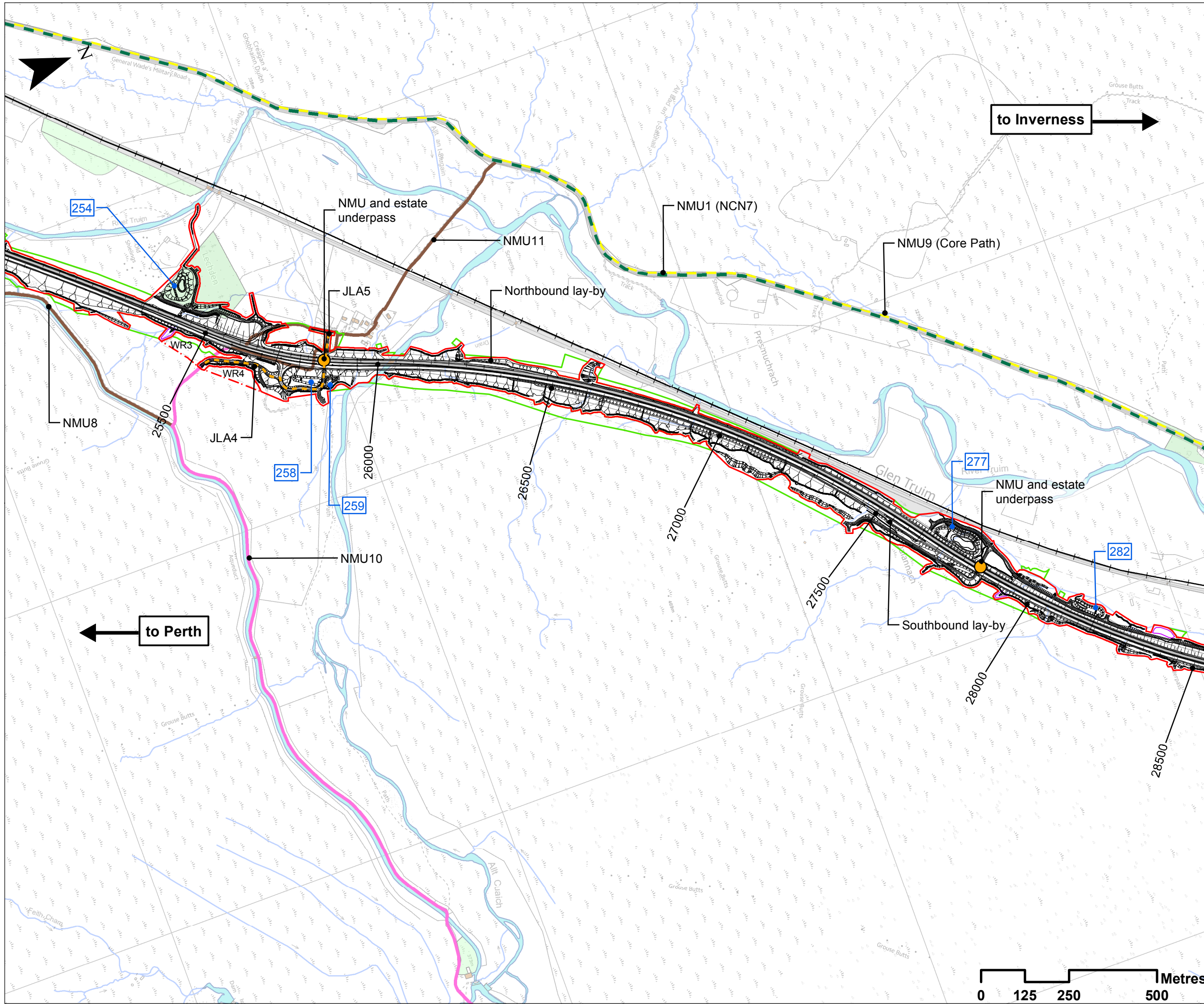
DATE: 11/12/2017
PROJ: 495298

DWG: A9P08-CFJ-EGN-J-ML220-ZZ-DR-EN-0003

SHEET: 3 OF 5	REVISION: C01	SUITABILITY: A3
------------------	------------------	--------------------



Document Path: J:\916161\Stage_3\916161\Chapter_9_A9\Travelers_P08_Figures\Fig_9.6_166668.mxd



- ### Legend
- Proposed Scheme Detail
 - Compensatory Storage Areas
 - 200 SuDS ID
 - Assessment Boundary - Permanent Works
 - Assessment Boundary - Temporary Works
 - WR1: 30m Winter Resilience Tree Belt (Indicative)
 - Potential new journey length
 - Proposed Crossing Points (CP)
 - Highland Mainline railway
- ### NMU (non-motorised user) Routes
- NCN7 (On-Road)
 - CNPA Core Path
 - Hill Walking Routes
 - Informal Routes

Note:
JLA refers to Journey Length Assessment and should be read in conjunction with Table 9-15 of Chapter 9.

SCALE 1:10000

REV	SUI	DATE	DESCRIPTION	BY	APP
P04	S3	NOV 2017	FINAL REVISIONS	ST	JF
P03	S3	SEPT 2017	INTERNAL REVISIONS	ST	JF
P02	S3	AUG 2017	DESIGN UPDATE	ST	JF
P01	S3	MAR 2017	DRAFT FOR COMMENT	ST	JF

ch2m: FAIRHURST

CH2MHILL Fairhurst JV
C/O: City Park 368 Alexandra Parade Glasgow G31 3AU
Tel + 44 (0) 141 552 2000 Fax +44 (0) 141 552 2525



**PROJECT 8 DALWHINNIE TO CRUBENMORE EIA
ASSESSMENT PLAN
DRAWING 9.7
ALL TRAVELLERS - NMUs
chainage 25200 to 28400**

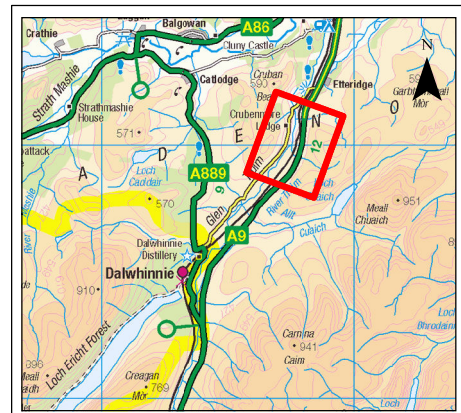
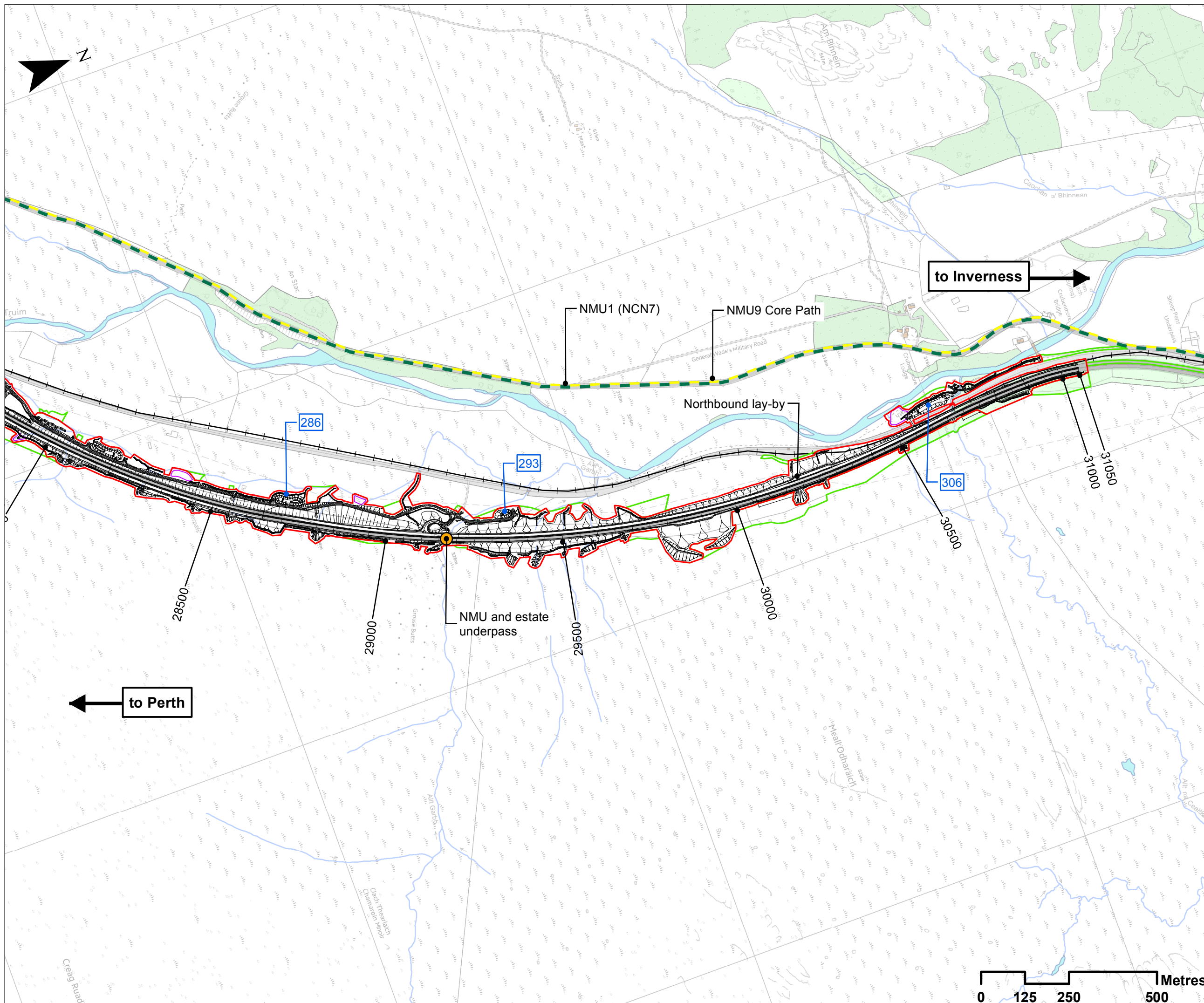
DESIGN: LF	DRAWN: ST	CHK: SWG	APP: JF
---------------	--------------	-------------	------------

DATE: 07/12/2017
PROJ: 495298

DWG: A9P08-CFJ-EGN-J-ML252-ZZ-DR-EN-0003

SHEET: 4 OF 5	REVISION: C01	SUITABILITY: A3
------------------	------------------	--------------------

Document Path: J:\916161\Stage_3\916161\Chapter_9_A9_Travellers_P08_Figures_37.mxd



- ### Legend
- Proposed Scheme Detail
 - Compensatory Storage Areas
 - SuDS ID
 - Assessment Boundary - Permanent Works
 - Assessment Boundary - Temporary Works
 - Proposed Crossing Point (CP)
 - Highland Mainline railway
- ### NMU (non-motorised user) Routes
- NCN7 (On-Road)
 - CNPA Core Path

SCALE 1:10000

P04	S3	NOV 2017	FINAL REVISIONS	ST	JF
P03	S3	SEPT 2017	INTERNAL REVISIONS	ST	JF
P02	S3	AUG 2017	DESIGN UPDATE	ST	JF
P01	S3	MAR 2017	DRAFT FOR COMMENT	ST	JF
REV	SUI	DATE	DESCRIPTION	BY	APP

ch2m. FAIRHURST
 CH2MHILL Fairhurst JV
 C/O: City Park 368 Alexandra Parade Glasgow G31 3AU
 Tel + 44 (0) 141 552 2000 Fax +44 (0) 141 552 2525



PROJECT 8 DALWHINNIE TO CRUBERMORE EIA
ASSESSMENT PLANS
DRAWING 9.8
ALL TRAVELLERS - NMUs
chainage 28200 to 31050

DESIGN: LF	DRAWN: ST	CHK: SWG	APP: JF
---------------	--------------	-------------	------------

DATE: 07/12/2017
 PROJ: 495298

DWG: A9P08-CFJ-EGN-J-ML282-ZZ-DR-EN-0003

SHEET: 5 OF 5	REVISION: C01	SUITABILITY: A3
------------------	------------------	--------------------



Document Path: J:\9161615\Stage_3\9161615\Chapter_9_All_Travellers\9161615_Figures\Figures_9.8.mxd