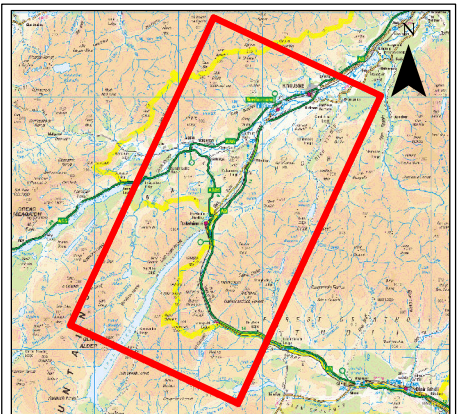
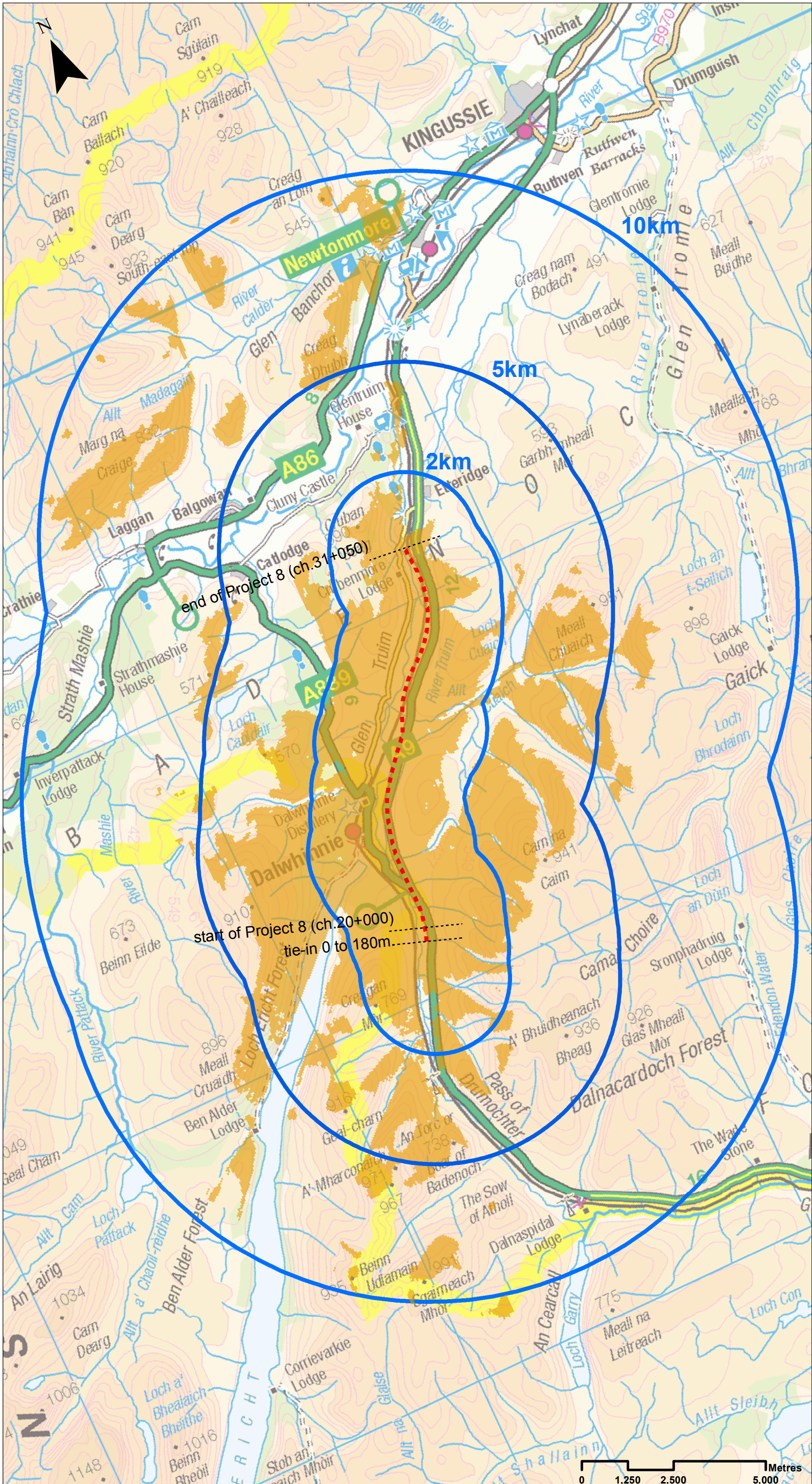


Landscape

Drawing No.	Drawing Type	Drawing Title	Projectwise Drawing Reference	Software
13.1	BASELINE PLAN	LANDSCAPE STUDY AREA AND EXISTING THEORETICAL ZONE OF VISUAL INFLUENCE	A9P08-CFJ-ELS-J_ZZZZZ_ZZ-DR-LA-0016	GIS
13.2	BASELINE PLAN	LANDSCAPE DESIGNATIONS	A9P08-CFJ-ELS-J_ZZZZZ_ZZ-DR-LA-0017	GIS
13.3	BASELINE PLAN	CAIRNGORMS NATIONAL PARK LANDSCAPE CHARACTER ASSESSMENT 2009	A9P08-CFJ-ELS-J_ZZZZZ_ZZ-DR-LA-0018	GIS
13.4	BASELINE PLAN	LOCAL LANDSCAPE CHARACTER ASSESSMENT	A9P08-CFJ-ELS-J_ZZZZZ_ZZ-DR-LA-0019	GIS
13.5	BASELINE PLAN	TOPOGRAPHY	A9P08-CFJ-ELS-J_ZZZZZ_ZZ-DR-LA-0027	GIS



Legend

- Proposed Scheme Extents
- Existing A9 theoretical Zone of Visual Influence
- 2km, 5km, 10km buffers from existing A9
- Existing A9 within Project 8 extent

Note:
Theoretical Zone of Visual Influence produced using Ordnance Survey Landform Panorama data (50m resolution) and based on extent of existing A9 within Project 8 extent.

SCALE 1:100000

P03	S3	NOV 2017	FINAL REVISIONS	ST	JF
P02	S3	AUG 2017	DESIGN UPDATE	JC	JF
P01	S3	MAR 2017	DRAFT FOR COMMENT	JC	JF
REV	SUIT	DATE	DESCRIPTION	BY	APP



CH2MHILL Fairhurst JV
CO: City Park 368 Alexandra Parade Glasgow G31 3AU
Tel + 44 (0) 141 552 2000 Fax +44 (0) 141 552 2525



**PROJECT 8 DALWHINNIE TO CRUBENMORE EIA
BASELINE PLAN
DRAWING 13.1
LANDSCAPE STUDY AREA AND
EXISTING THEORETICAL ZONE OF VISUAL INFLUENCE**

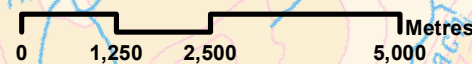
DESIGN: ER	DRAWN: ST	CHK: SWG	APP: JF
---------------	--------------	-------------	------------

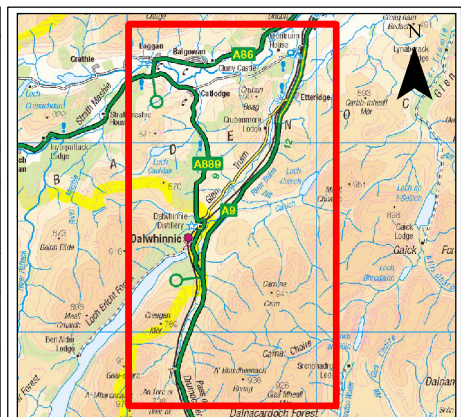
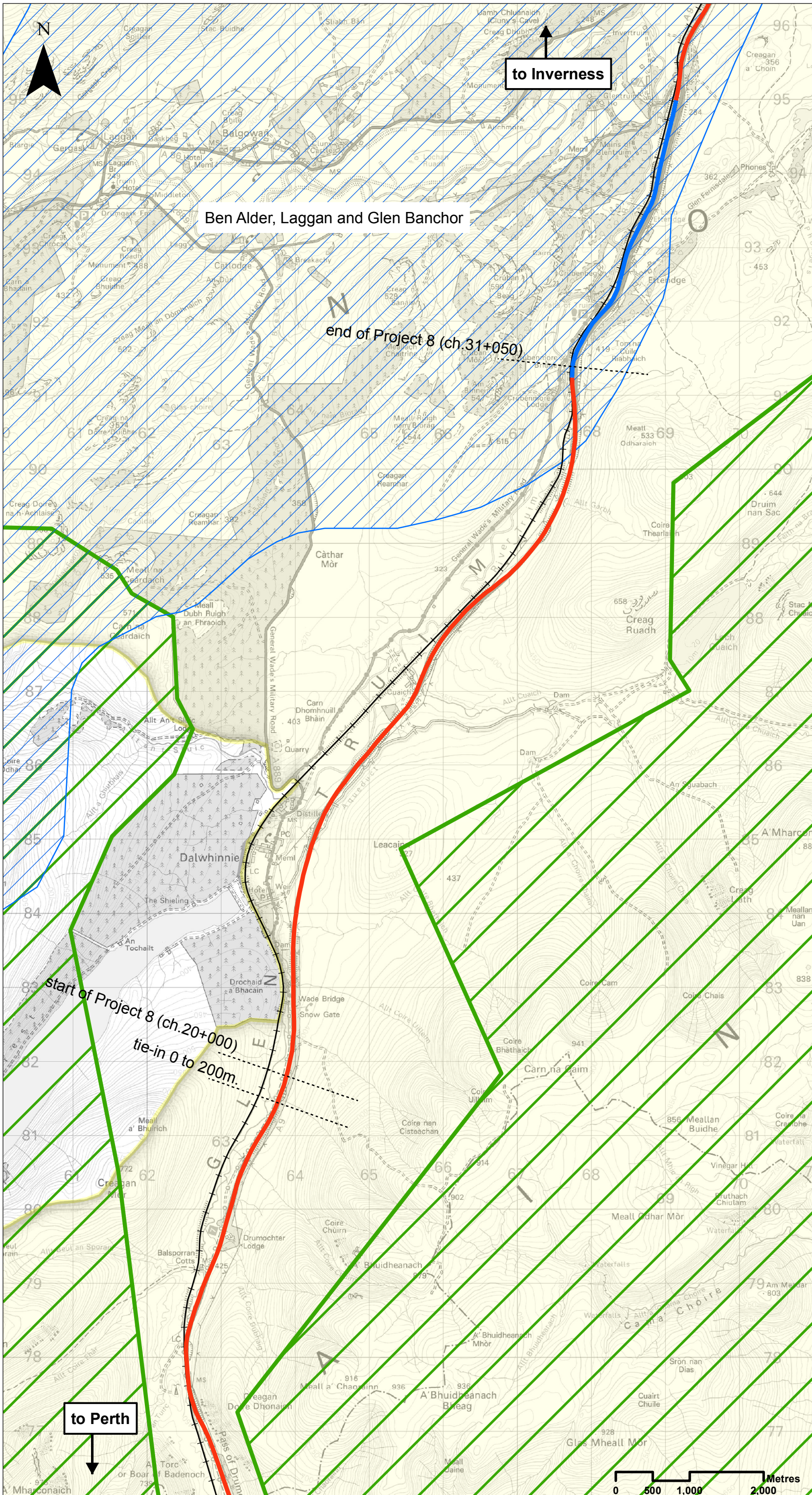
DATE: 07/12/2017

PROJ: 495298

DWG: A9P08-CFJ-ELS-J_ZZZZZ_ZZ-DR-LA-0016

SHEET: 1 OF 1	REVISION: C01	SUITABILITY: A3
------------------	------------------	--------------------





Legend

- Proposed Scheme Extents
- Existing Dualled
- Existing Single
- Highland Mainline railway
- Cairngorms National Park
- Scottish Natural Heritage Wild Land Scotland
- Special Landscape Area

Ben Alder, Laggan and Glen Banchor

to Inverness

end of Project 8 (ch.31+050)

start of Project 8 (ch.20+000)
tie-in 0 to 200m.

to Perth

SCALE 1:50000

P03	S3	NOV 2017	FINAL REVISIONS	ST	JF
P02	S3	AUG 2017	DESIGN UPDATE	JC	JF
P01	S3	MAR 2017	DRAFT FOR COMMENT	JC	JF
REV	SUIT	DATE	DESCRIPTION	BY	APP

ch2m FAIRHURST

CH2MHILL Fairhurst JV
C/O: City Park 368 Alexandra Parade Glasgow G31 3AU
Tel + 44 (0) 141 552 2000 Fax +44 (0) 141 552 2525



**PROJECT 8 DALWHINNIE TO CRUBENMORE EIA
BASELINE PLAN
DRAWING 13.2
LANDSCAPE DESIGNATIONS**

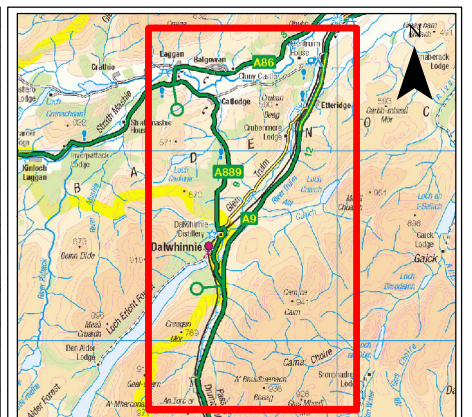
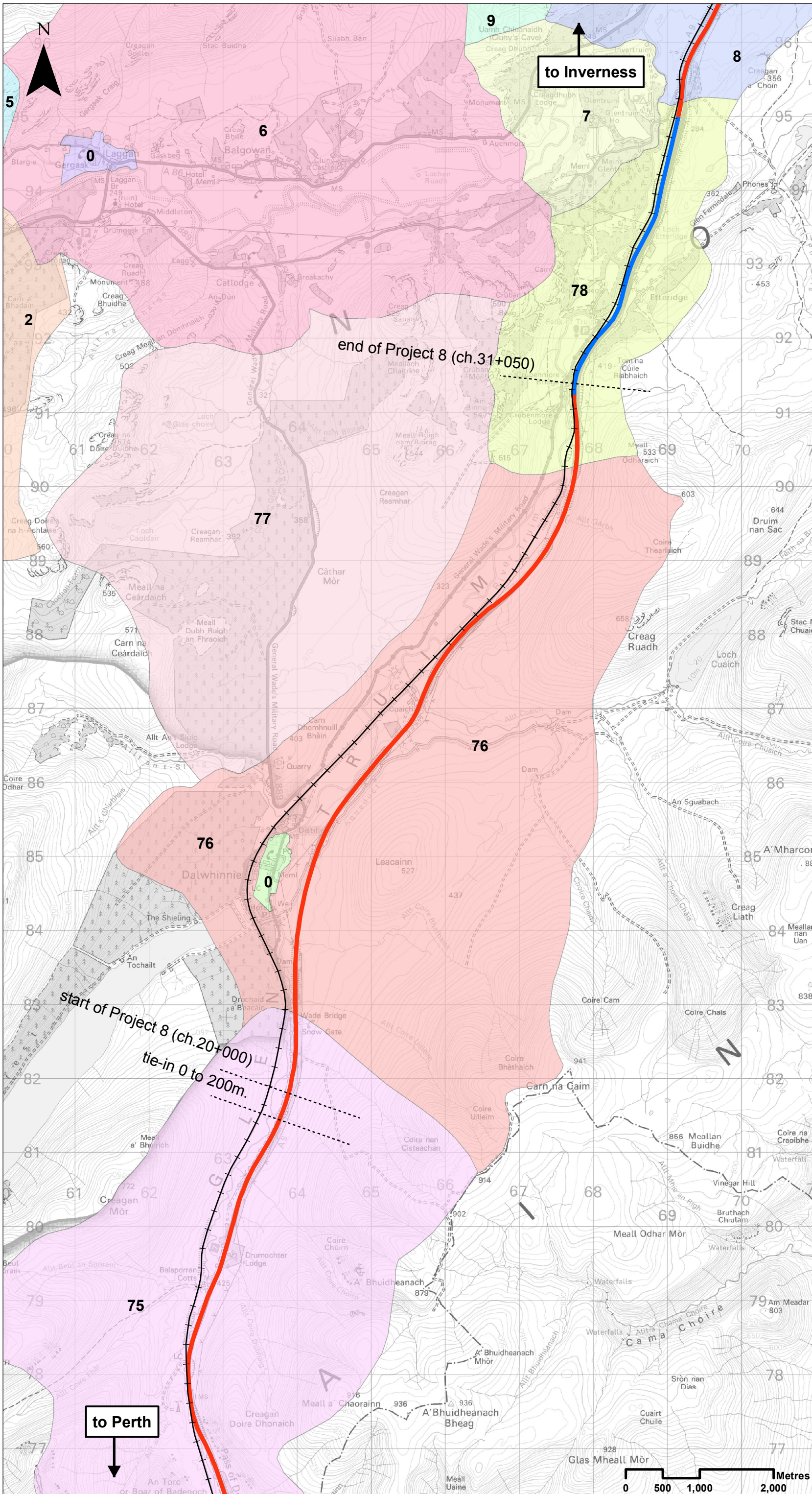
DESIGN: ER	DRAWN: ST	CHK: SWG	APP: JF
---------------	--------------	-------------	------------

DATE: 07/12/2017

PROJ: 495298

DWG: A9P08-CFJ-ELS-J_ZZZZZ_ZZ-DR-LA-0017

SHEET: 1 OF 1	REVISION: C01	SUITABILITY: A3
------------------	------------------	--------------------



Legend

- Proposed Scheme Extents
- Existing Dualled
- Existing Single
- +— Highland Mainline railway

Cairngorms National Park Authority Landscape Character Area

- 0** Laggan: Derived from Landscape Capacity for Housing Study (2005)
- 0** Dalwhinnie: Derived from Landscape Capacity for Housing Study (2005)
- 2** Ardverikie: Pattack Glen/Strath Mashie
- 5** Upper Spey Farmlands: Coul Farm Pinch Point
- 6** Upper Spey Farmlands: Laggan Strath
- 7** Upper Spey Farmlands: Loch Uvie Pinch Point
- 8** Badenoch: Upper Strath
- 9** Badenoch: Upper Glen Banchor
- 75** Drumochter Pass
- 76** Glen Truim: Upper Glen & Dalwhinnie
- 77** Cathar Mor
- 78** Glen Truim

SCALE 1:50000

REV	SUIT	DATE	DESCRIPTION	BY	APP
P03	S3	NOV 2017	FINAL REVISIONS	ST	JF
P02	S3	AUG 2017	DESIGN UPDATE	JC	JF
P01	S3	MAR 2017	DRAFT FOR COMMENT	JC	JF

ch2m FAIRHURST

CH2MHILL Fairhurst JV
 CO: City Park 368 Alexandra Parade Glasgow G31 3AU
 Tel + 44 (0) 141 552 2000 Fax +44 (0) 141 552 2525



PROJECT 8 DALWHINNIE TO CRUBENMORE EIA BASELINE PLAN DRAWING 13.3 CAIRNGORMS NATIONAL PARK AUTHORITY LANDSCAPE CHARACTER ASSESSMENT 2009

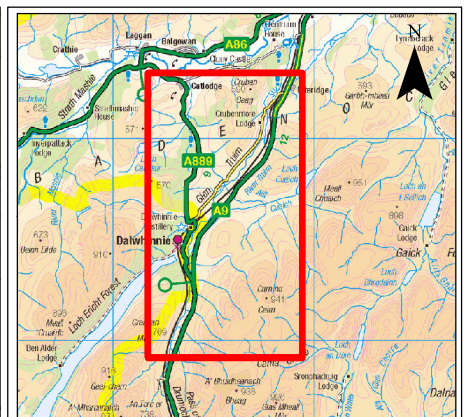
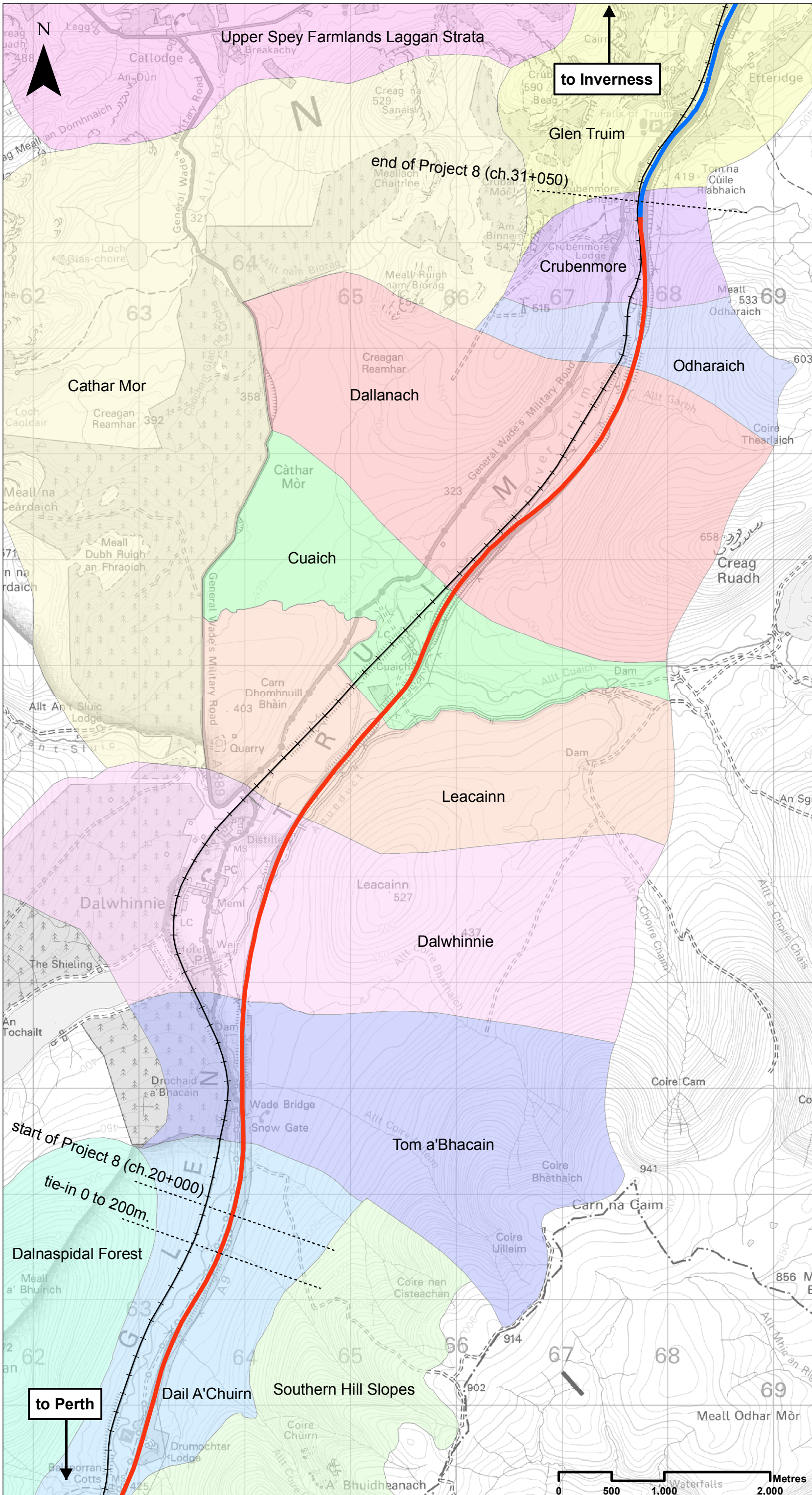
DESIGN:	DRAWN:	CHK:	APP:
ER	ST	SWG	JF

DATE: 07/12/2017

PROJ: 495298

DWG: A9P08-CFJ-ELS-J_ZZZZZ_ZZ-DR-LA-0018

SHEET:	REVISION:	SUITABILITY:
1 OF 1	C01	A3



Legend

- Proposed Scheme Extents
- Existing Dualled
- Existing Single
- Highland Mainline railway

CFJV Local Landscape Character Areas

- Cathar Mor
- Crubenmore
- Cuaich
- Dail A'Chuirn
- Dallanach
- Dalnaspidal Forest
- Dalwhinnie
- Glen Truim
- Leacainn
- Odharaich
- Southern Hill Slopes
- Tom a'Bhacain
- Upper Spey Farmlands Laggan Strata

Note:
Local Landscape Character Areas have been identified by CFJV.

SCALE 1:35000

P03	S3	NOV 2017	FINAL REVISIONS	ST	JF
P02	S3	AUG 2017	DESIGN UPDATE	JC	JF
P01	S3	MAR 2017	DRAFT FOR COMMENT	JC	JF
REV	SUIT	DATE	DESCRIPTION	BY	APP

ch2m FAIRHURST
 CH2MHILL Fairhurst JV
 CO: City Park 368 Alexandra Parade Glasgow G31 3AU
 Tel + 44 (0) 141 552 2000 Fax +44 (0) 141 552 2525



**PROJECT 8 DALWHINNIE TO CRUBENMORE EIA
 BASELINE PLAN
 DRAWING 13.4
 LOCAL LANDSCAPE CHARACTER AREAS**

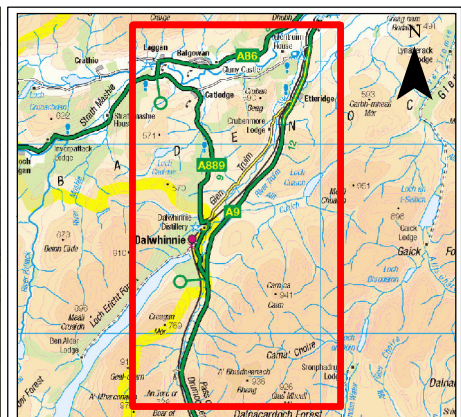
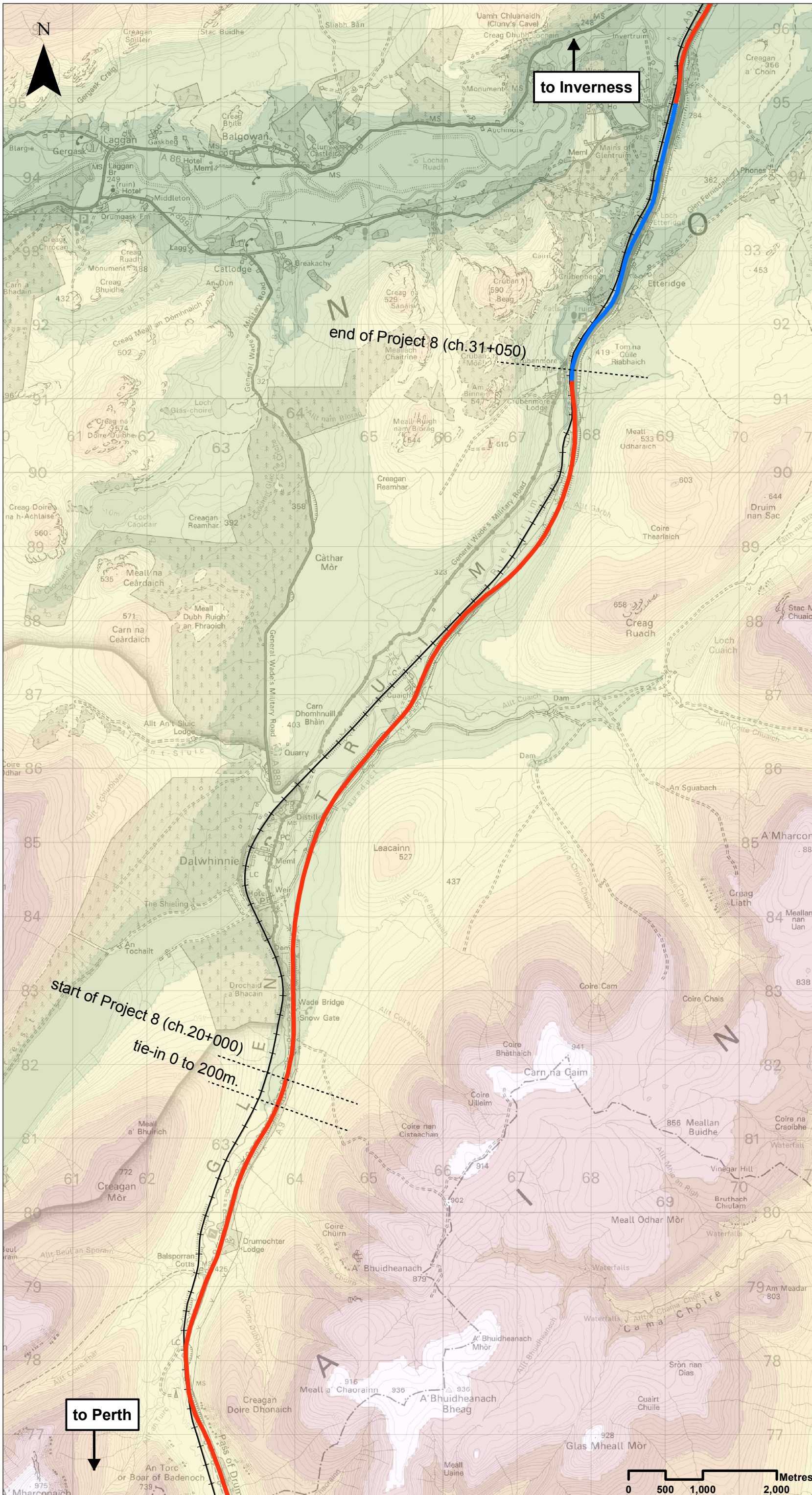
DESIGN: ER	DRAWN: ST	CHK: SWG	APP: JF
---------------	--------------	-------------	------------

DATE: 07/12/2017

PROJ: 495298

DWG: A9P08-CFJ-ELS-J_ZZZZZ_ZZ-DR-LA-0019

SHEET: 1 OF 1	REVISION: C01	SUITABILITY: A3
------------------	------------------	--------------------



Legend

- Proposed Scheme Extents
- Existing Dualled
- Existing Single
- +— Highland Mainline railway

Topography

Above Ordnance Datum (metres)

- < 300
- 300 - 400
- 400 - 500
- 500 - 600
- 600 - 700
- 700 - 800
- 800 - 900
- 900+

SCALE 1:50000

PO2	S3	NOV 2017	FINAL REVISIONS	ST	JF
P01	S3	AUG 2017	DESIGN UPDATE	JC	JF
REV	SUIT	DATE	DESCRIPTION	BY	APP

ch2m FAIRHURST

CH2MHILL Fairhurst JV
 CO: City Park 368 Alexandra Parade Glasgow G31 3AU
 Tel +44 (0) 141 552 2000 Fax +44 (0) 141 552 2525



PROJECT 8 DALWHINNIE TO CRUBENMORE EIA BASELINE PLAN DRAWING 13.5 TOPOGRAPHY

DESIGN: ER	DRAWN: ST	CHK: SWG	APP: JF
---------------	--------------	-------------	------------

DATE: 07/12/2017

PROJ: 495298
 DWG: A9P08-CF3-EGN-J_ZZZZZ_ZZ-DR-EN-0027

SHEET: 1 OF 1	REVISION: C01	SUITABILITY: A3
------------------	------------------	--------------------