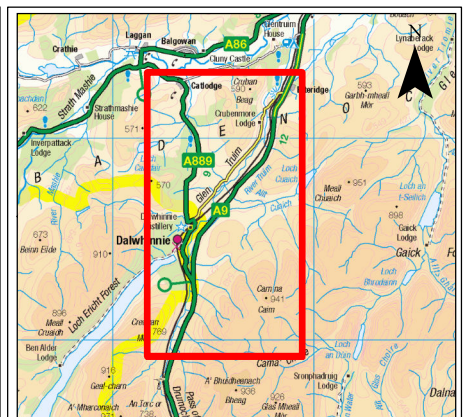
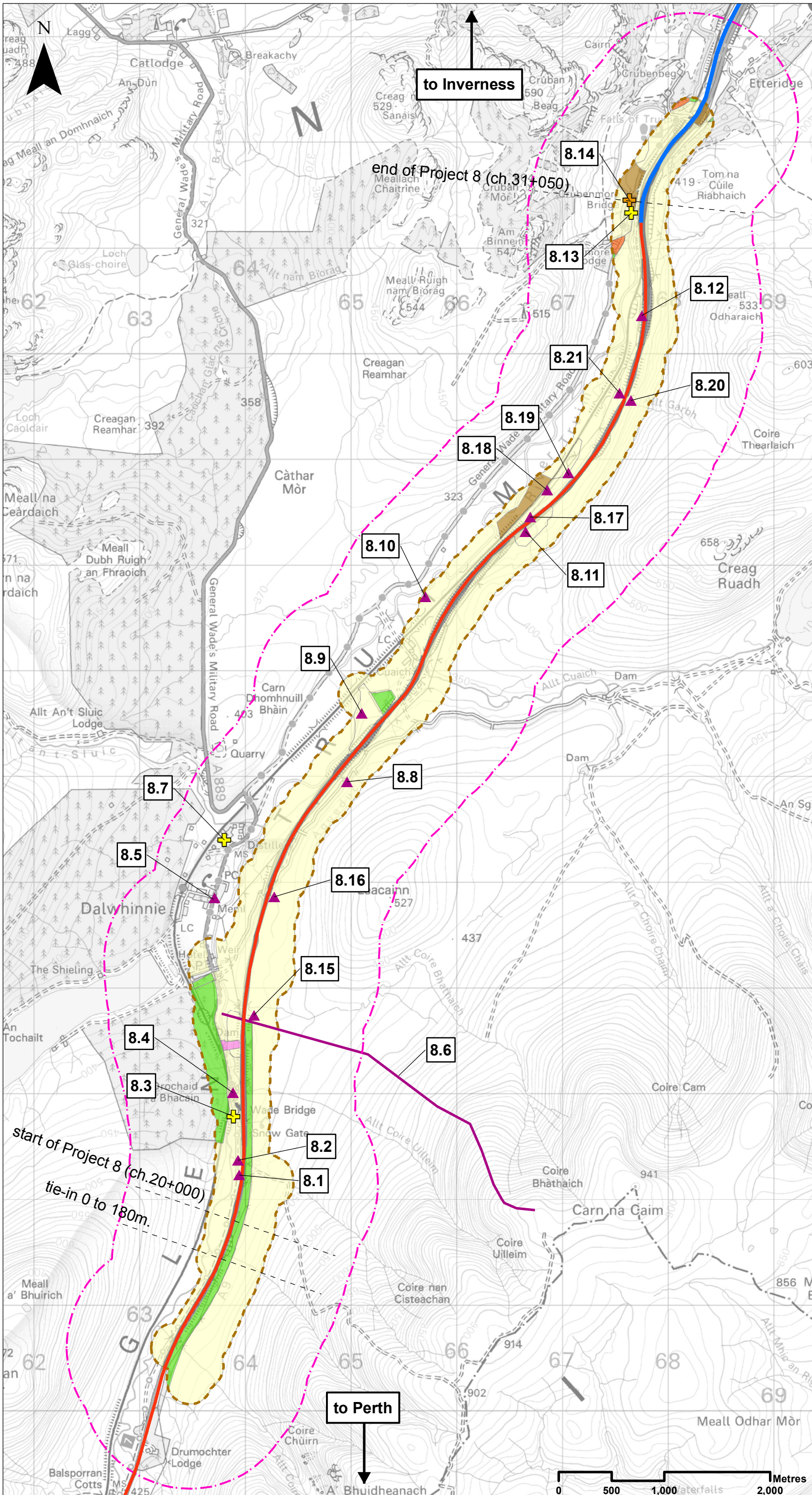


Cultural Heritage

Drawing No.	Drawing Type	Drawing Title	Projectwise Drawing Reference	Software
15.1	BASELINE PLAN	CULTURAL HERITAGE ASSETS	A9P08-CFJ-EHR-J_MLZZZ_ZZ-DR-EN-0001	GIS
15.2	ASSESSMENT PLAN	CULTURAL HERITAGE ASSETS chainage 0 to 20000	A9P08-CFJ-EHR-J_ML000_ZZ-DR-EN-0001	GIS
15.3	ASSESSMENT PLAN	CULTURAL HERITAGE ASSETS chainage 20000 to 23000	A9P08-CFJ-EHR-J_ML200_ZZ-DR-EN-0001	GIS
15.4	ASSESSMENT PLAN	CULTURAL HERITAGE ASSETS chainage 22000 to 25400	A9P08-CFJ-EHR-J_ML220_ZZ-DR-EN-0001	GIS
15.5	ASSESSMENT PLAN	CULTURAL HERITAGE ASSETS chainage 25200 to 28400	A9P08-CFJ-EHR-J_ML252_ZZ-DR-EN-0001	GIS
15.6	ASSESSMENT PLAN	CULTURAL HERITAGE ASSETS chainage 28200 to 31050	A9P08-CFJ-EHR-J_ML282_ZZ-DR-EN-0001	GIS



Legend

- Proposed Scheme Extents
 - Existing Dualled
 - Existing Single
 - - - Cultural Heritage Study Area 200m
 - - - Cultural Heritage Study Area 1000m
- Cultural Heritage Assets**
- + B Listed Building
 - + C Listed Building
 - ▲ Undesignated Cultural Heritage Asset
 - Undesignated Cultural Heritage Asset
- Historic Landscape Type**
- HLT1 - Rough Grazing
 - HLT2 - Reservoir
 - HLT3 - Plantation
 - HLT4 - Rectilinear Fields and Farms
 - HLT5 - Designed Landscape
 - HLT6 - Motorway
- 8.0** Cultural Heritage Asset ID

SCALE 1:35000

REV	SUIT	DATE	DESCRIPTION	BY	APP
P02	S3	NOV 2017	FINAL REVISIONS	EV	JF
P02	S3	AUG 2017	INTERNAL REVISIONS	EV	JF
P01	S3	MAR 2017	DRAFT FOR COMMENT	EV	JF

ch2m FAIRHURST
 CH2MHILL Fairhurst JV
 C/O: City Park, 368 Alexandra Parade Glasgow G31 3AU
 Tel +44 (0) 141 552 2000 Fax +44 (0) 141 552 2525



**PROJECT 8 DALWHINNIE TO CRUBENMORE EIA
 BASELINE PLAN
 DRAWING 15.1
 CULTURAL HERITAGE ASSETS**

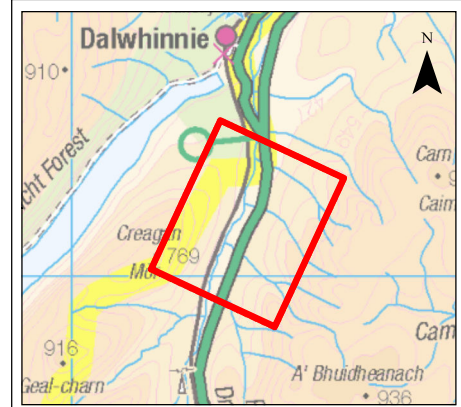
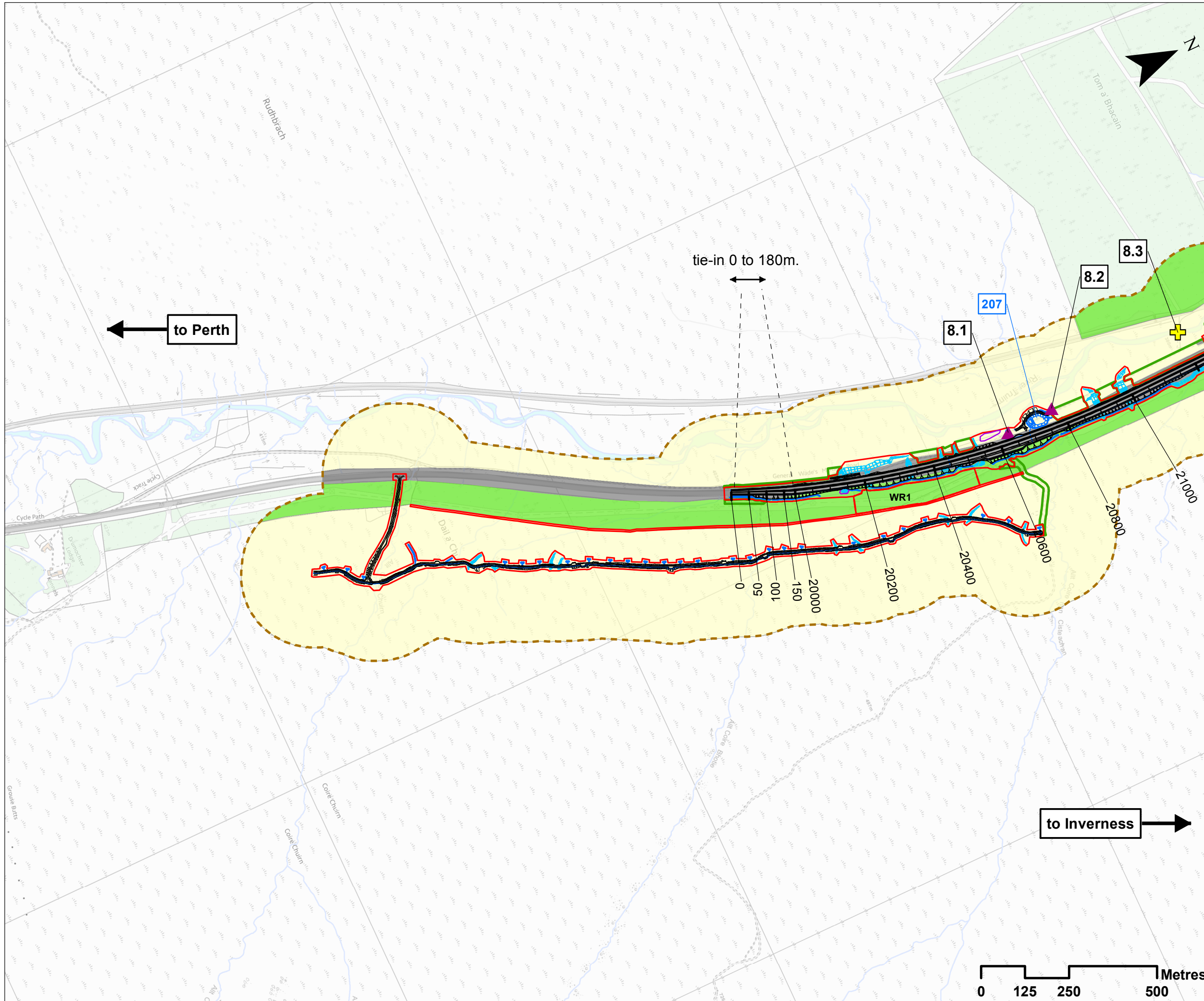
DESIGN: AM	DRAWN: EV	CHK: GG	APP: JF
---------------	--------------	------------	------------

DATE: 04/12/2017

PROJ: 495298

DWG: A9P08-CFJ-EHR-J_MLZZZ_ZZ-DR-EN-001

SHEET: 1 of 6	REVISION: C01	SUITABILITY: A3
------------------	------------------	--------------------



Legend

- Proposed Scheme Detail
- Watercourse Diversions
- Drainage
- 200 SuDS ID
- Compensatory Storage Areas
- Assessment Boundary - Permanent Works
- Assessment Boundary - Temporary Works
- WR1 Winter Resilience Tree Belt (Indicative)
- Cultural Heritage Study Area

Cultural Heritage Assets

- + B Listed Building
- ▲ Undesignated Cultural Heritage Asset

Historic Landscape Type

- HLT1 - Rough Grazing
- HLT3 - Plantation
- HLT6 - Motorway

8.0 Cultural Heritage Asset ID
SCALE 1:10000

REV	SUI	DATE	DESCRIPTION	EV	JF
P03	S3	NOV 17	FINAL REVISIONS	EV	JF
P02	S3	AUG 17	DESIGN UPDATE	EV	JF
P01	S3	MAR 17	DRAFT FOR COMMENT	EV	JF

ch2m. FAIRHURST

CH2MHILL Fairhurst JV
C/O: City Park 368 Alexandra Parade Glasgow G31 3AU
Tel + 44 (0) 141 552 2000 Fax +44 (0) 141 552 2525



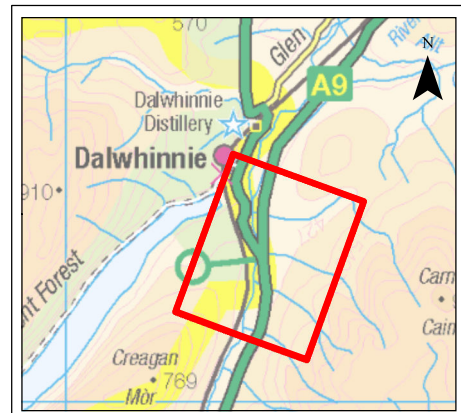
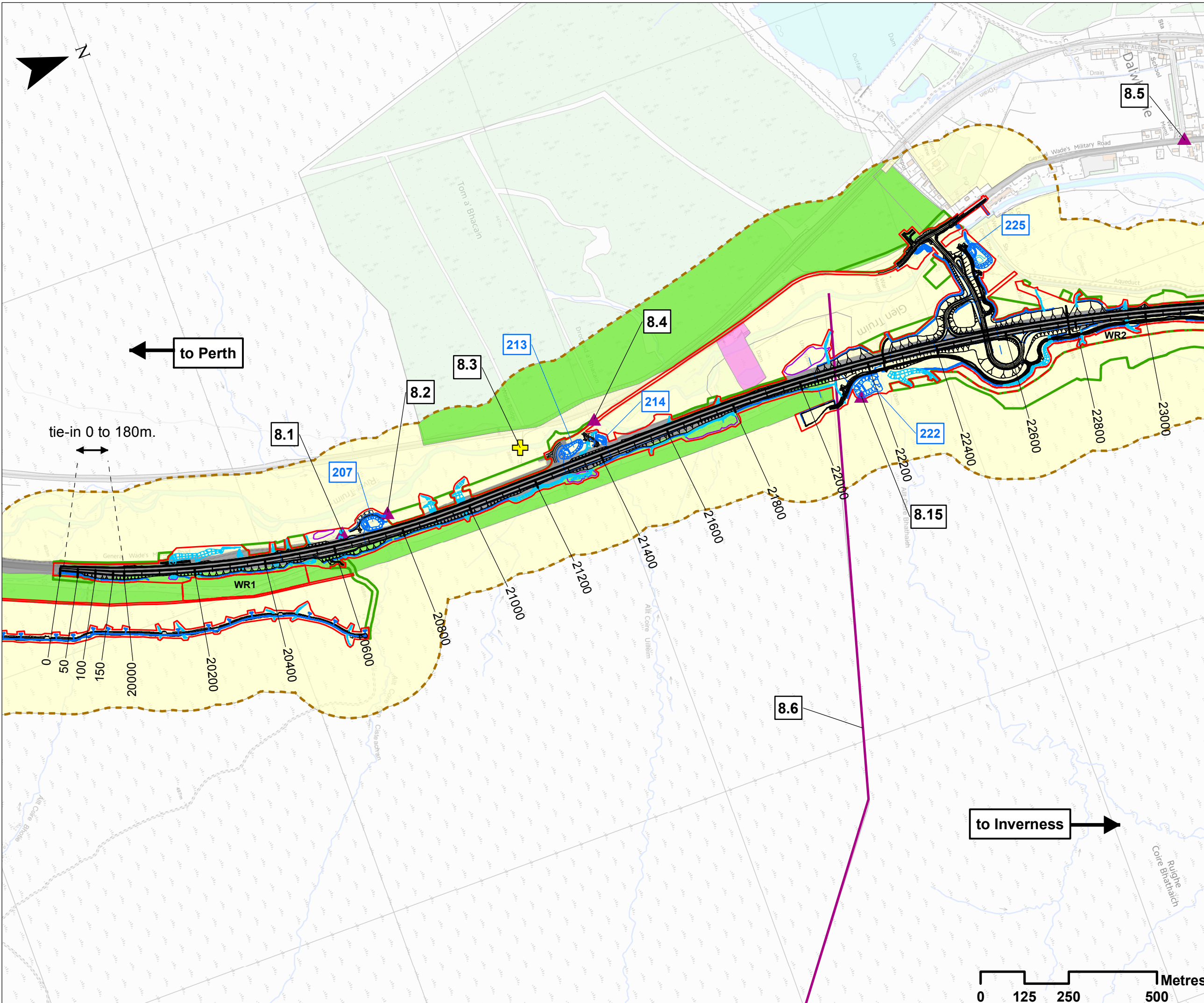
PROJECT 8 DALWHINNIE TO CRUBENMORE EIA ASSESSMENT PLAN DRAWING 15.2 CULTURAL HERITAGE ASSETS chainage 0 to 20000

DESIGN: AM	DRAWN: EV	CHK: GG	APP: JF
---------------	--------------	------------	------------

DATE: 04/12/2017
PROJ: 495298

DWG: A9P08-CFJ-EHR-J_ML000_ZZ-DR-EN-0001

SHEET: 2 of 6	REVISION: C01	SUITABILITY: A3
------------------	------------------	--------------------



- ### Legend
- Proposed Scheme Detail
 - Watercourse Diversions
 - Drainage
 - SuDS ID
 - Compensatory Storage Areas
 - Assessment Boundary - Permanent Works
 - Assessment Boundary - Temporary Works
 - Winter Resilience Tree Belt (Indicative)
 - Cultural Heritage Study Area
- ### Cultural Heritage Assets
- B Listed Building
 - Undesignated Cultural Heritage Asset
 - Undesignated Cultural Heritage Asset
- ### Historic Landscape Type
- HLT1 - Rough Grazing
 - HLT2 - Reservoir
 - HLT3 - Plantation
 - HLT6 - Motorway
- Cultural Heritage Asset ID

SCALE 1:10000

REV	SUI	DATE	DESCRIPTION	BY	APP
P03	S3	NOV 17	FINAL REVISIONS	EV	JF
P02	S3	AUG 17	DESIGN UPDATE	EV	JF
P01	S3	MAR 17	DRAFT FOR COMMENT	EV	JF

ch2m: FAIRHURST
 CH2MHILL Fairhurst JV
 C/O: City Park 368 Alexandra Parade Glasgow G31 3AU
 Tel + 44 (0) 141 552 2000 Fax +44 (0) 141 552 2525



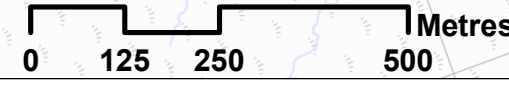
**PROJECT 8 DALWHINNIE TO CRUBENMORE EIA
 ASSESSMENT PLAN
 DRAWING 15.3
 CULTURAL HERITAGE ASSETS
 chainage 20000 to 23000**

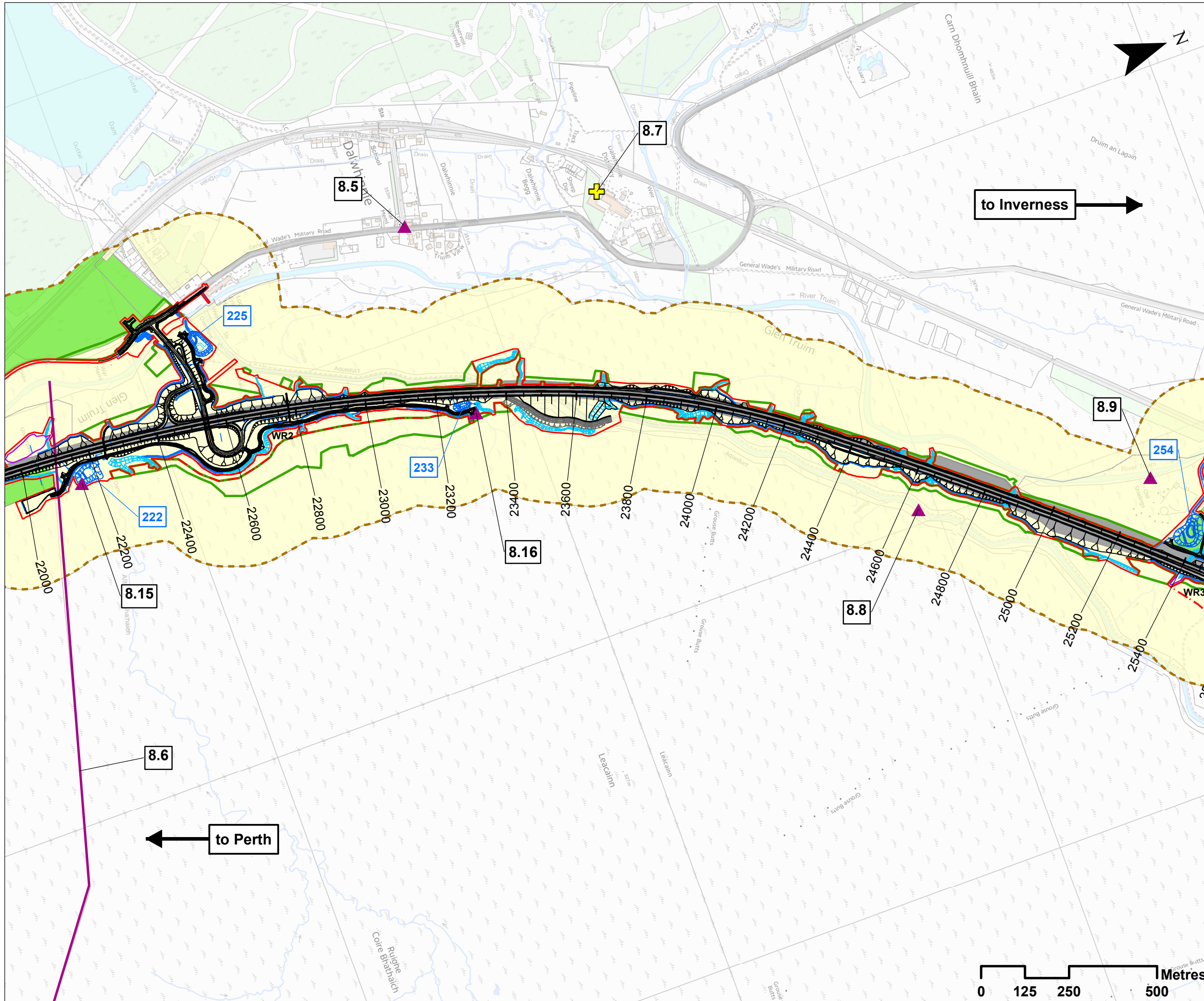
DESIGN: AM	DRAWN: EV	CHK: GG	APP: JF
---------------	--------------	------------	------------

DATE: 04/12/2017
 PROJ: 495298

DWG: A9P08-CFJ-EHR-J_ML200_ZZ-DR-EN-0001

SHEET: 3 of 6	REVISION: C01	SUITABILITY: A3
------------------	------------------	--------------------





- ### Legend
- Proposed Scheme Detail
 - Aqueduct Diversion
 - Watercourse Diversions
 - Drainage
 - SuDS ID
 - Compensatory Storage Areas
 - Assessment Boundary - Permanent Works
 - Assessment Boundary - Temporary Works
 - Winter Resilience Tree Belt (Indicative)
 - Cultural Heritage Study Area
 - B Listed Building
 - Undesignated Cultural Heritage Asset
 - Undesignated Cultural Heritage Asset
 - HLT1 - Rough Grazing
 - HLT3 - Plantation
 - HLT6 - Motorway
 - Cultural Heritage Asset ID

SCALE 1:10000

REV	SUI	DATE	DESCRIPTION	BY	APP
P03	S3	NOV 17	FINAL REVISIONS	EV	JF
P02	S3	AUG 17	DESIGN UPDATE	EV	JF
P01	S3	MAR 17	DRAFT FOR COMMENT	EV	JF

ch2m: FAIRHURST
 CH2MHILL Fairhurst JV
 C/O: City Park 368 Alexandra Parade Glasgow G31 3AU
 Tel + 44 (0) 141 552 2000 Fax +44 (0) 141 552 2525



**PROJECT 8 DALWHINNIE TO CRUBENMORE EIA
 ASSESSMENT PLAN
 DRAWING 15.4
 CULTURAL HERITAGE ASSETS
 chainage 22000 to 25400**

DESIGN: AM	DRAWN: EV	CHK: GG	APP: JF
---------------	--------------	------------	------------

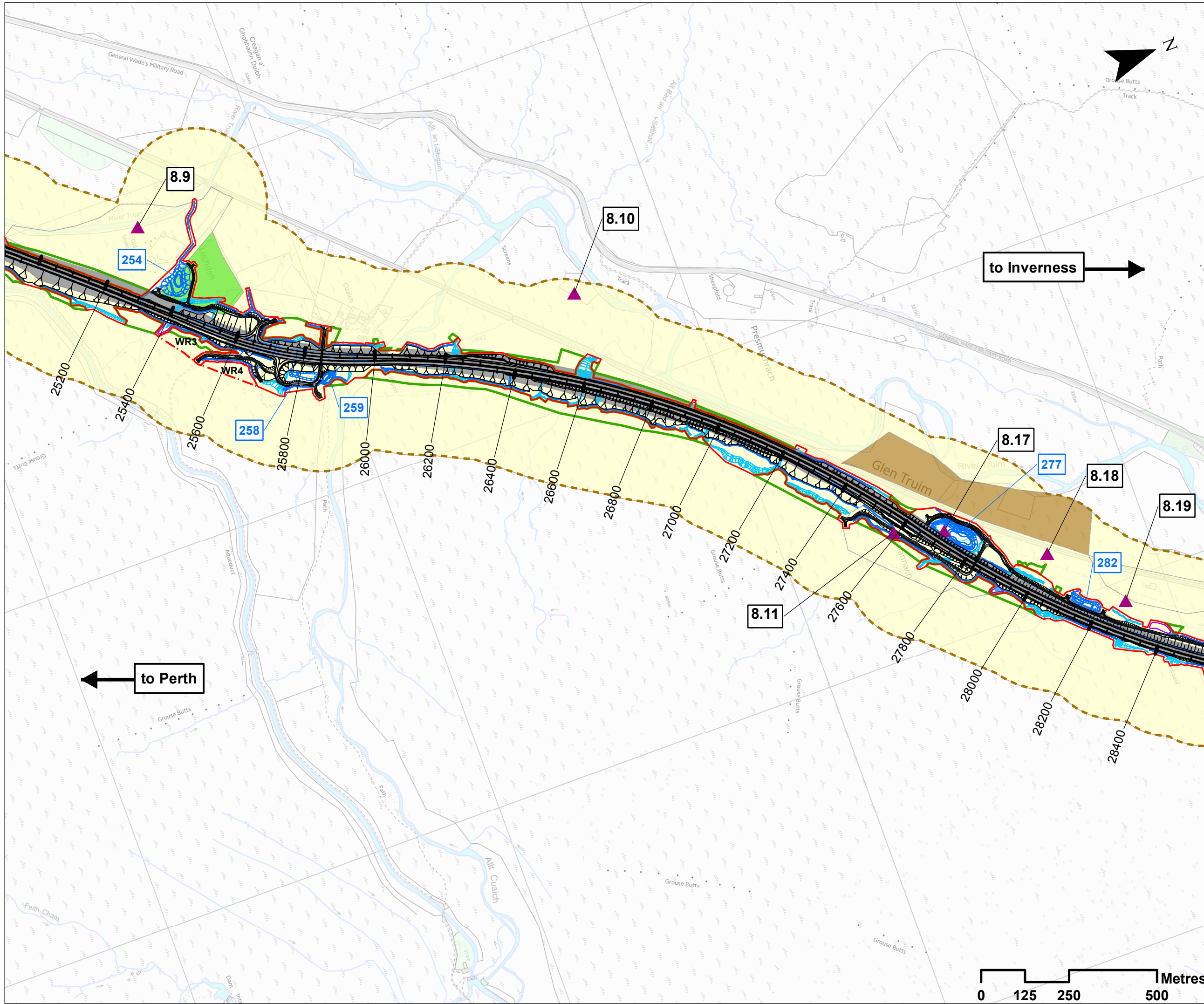
DATE: 04/12/2017
 PROJ: 495298

DWG: A9P08-CFJ-EHR-J_ML220_ZZ-DR-EN-0001

SHEET: 4 of 6	REVISION: C01	SUITABILITY: A3
------------------	------------------	--------------------



Document Path: \\g:\p08\Geospatial\Projects\A9_Dualling\GIS\DMR\34_2_Maps\PIR\Chapter_15_Cultural_Heritage\DRAWING_15_4.mxd



- ### Legend
- Proposed Scheme Detail
 - Watercourse Diversions
 - Drainage
 - 200 SuDS ID
 - Compensatory Storage Areas
 - Assessment Boundary - Permanent Works
 - Assessment Boundary - Temporary Works
 - WR1 Winter Resilience Tree Belt (Indicative)
 - Cultural Heritage Study Area
 - Cultural Heritage Assets
 - ▲ Undesignated Cultural Heritage Asset
 - Historic Landscape Type
 - HLT1 - Rough Grazing
 - HLT3 - Plantation
 - HLT4 - Rectilinear Fields and Farms
 - HLT6 - Motorway
 - 8.0 Cultural Heritage Asset ID

SCALE 1:10000

REV	SUI	DATE	DESCRIPTION	BY	APP
P03	S3	NOV 17	FINAL REVISIONS	EV	JF
P02	S3	AUG 17	DESIGN UPDATE	EV	JF
P01	S3	MAR 17	DRAFT FOR COMMENT	EV	JF

ch2m: FAIRHURST
 CH2MHILL Fairhurst JV
 C/O: City Park 368 Alexandra Parade Glasgow G31 3AU
 Tel + 44 (0) 141 552 2000 Fax +44 (0) 141 552 2525



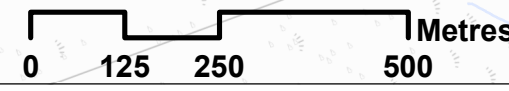
PROJECT 8 DALWHINNIE TO CRUBENMORE EIA
ASSESSMENT PLAN
DRAWING 15.5
CULTURAL HERITAGE ASSETS
chainage 25200 to 28400

DESIGN: AM	DRAWN: EV	CHK: GG	APP: JF
---------------	--------------	------------	------------

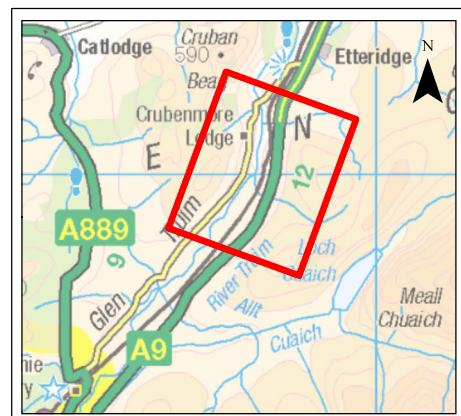
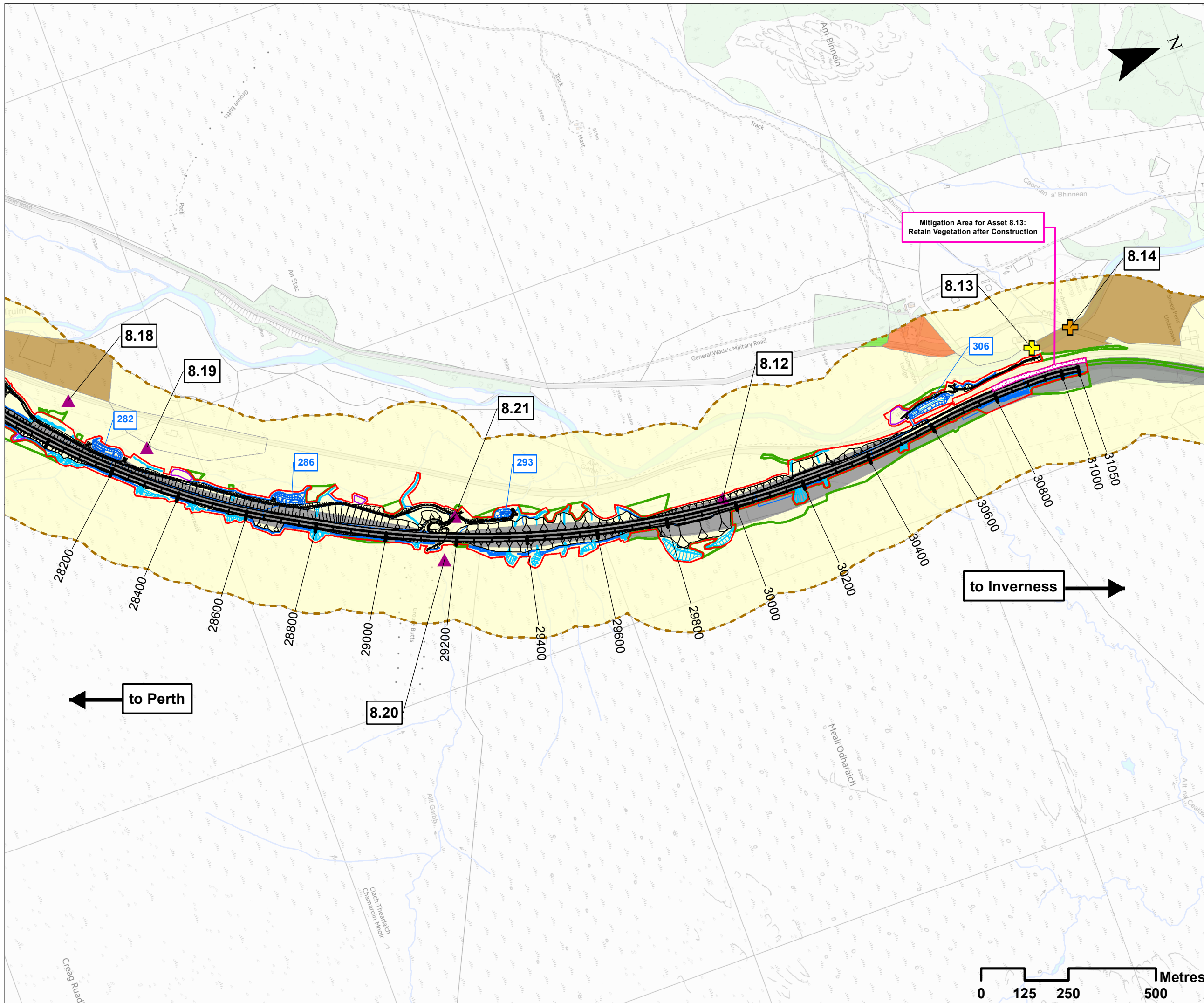
DATE: 04/12/2017
 PROJ: 495298

DWG: A9P08-CFJ-EHR-J ML252 ZZ-DR-EN-0001

SHEET: 5 of 6	REVISION: C01	SUITABILITY: A3
------------------	------------------	--------------------



Document Path: \\g:\p08\Geospatial\Projects\A9_Dualling\GIS\DMR\3.4.2_Maps\08\Chapter_15_Cultural_Heritage\DRAWING_15_5.mxd



Legend

- Proposed Scheme Detail
- Watercourse Diversions
- Drainage
- 200 SuDS ID
- Compensatory Storage Areas
- Assessment Boundary - Permanent Works
- Assessment Boundary - Temporary Works
- Cultural Heritage Mitigation Area
- Cultural Heritage Study Area
- Cultural Heritage Assets**
- + B Listed Building
- + C Listed Building
- ▲ Undesignated Cultural Heritage Asset
- Historic Landscape Type**
- HLT1 - Rough Grazing
- HLT3 - Plantation
- HLT4 - Rectilinear Fields and Farms
- HLT5 - Designed Landscape
- HLT6 - Motorway
- 8.0 Cultural Heritage Asset ID

SCALE 1:10000

REV	SUI	DATE	DESCRIPTION	EV	JF
P03	S3	NOV 17	FINAL REVISIONS	EV	JF
P02	S3	AUG 17	DESIGN UPDATE	EV	JF
P01	S3	MAR 17	DRAFT FOR COMMENT	EV	JF

ch2m: FAIRHURST

CH2MHILL Fairhurst JV
 C/O: City Park 368 Alexandra Parade Glasgow G31 3AU
 Tel + 44 (0) 141 552 2000 Fax +44 (0) 141 552 2525



**PROJECT 8 DALWHINNIE TO CRUBENMORE EIA
 ASSESSMENT PLAN
 DRAWING 15.6
 CULTURAL HERITAGE ASSETS
 chainage 28200 to 31050**

DESIGN: AM	DRAWN: EV	CHK: GG	APP: JF
---------------	--------------	------------	------------

DATE: 04/12/2017
 PROJ: 495298

DWG: A9P08-CFJ-EHR-J_ML282_ZZ-DR-EN-0001

SHEET: 6 of 6	REVISION: C01	SUITABILITY: A3
------------------	------------------	--------------------