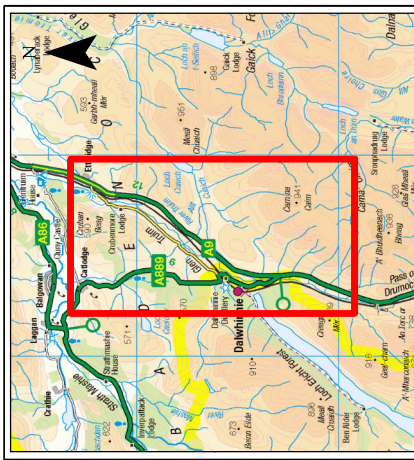
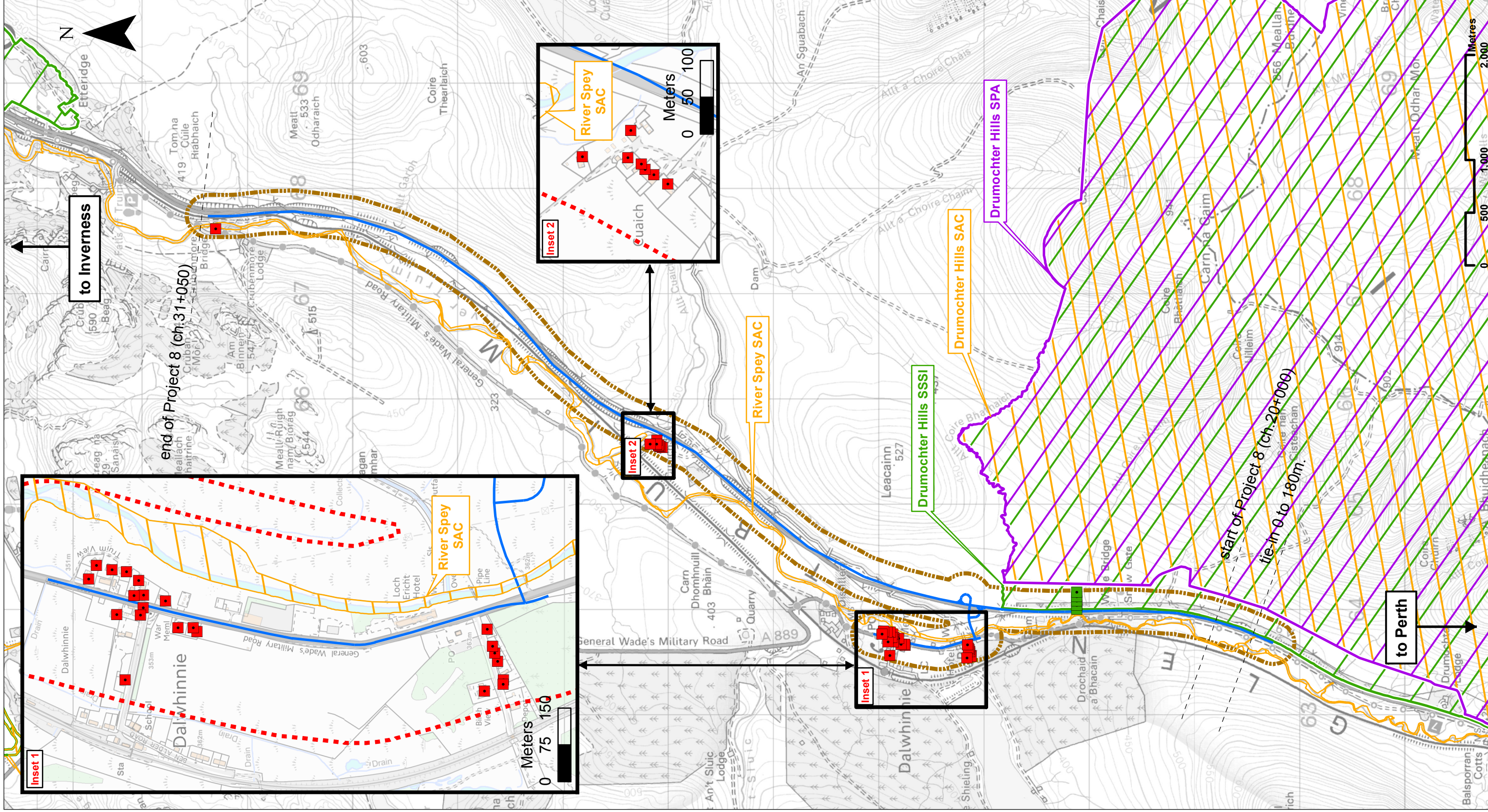


## Air Quality

Drawing No.	Drawing Type	Drawing Title	Projectwise Drawing Reference	Software
16.1	BASELINE PLAN	PROJECT 8 DALWHINNIE TO CRUBENMORE DMRB STAGE 3 BASELINE PLAN DRAWING 16.1 LOCAL AIR QUALITY ASSESSMENT AREAS AND RECEPTORS	A9P08-CFJ-EAQ-J_MLZZZ_ZZ-DR-EN-0001	GIS
16.2	BASELINE PLAN	PROJECT 8 DALWHINNIE TO CRUBENMORE DMRB STAGE 3 BASELINE PLAN DRAWING 16.2 CONSTRUCTION DUST STUDY AREA	A9P08-CFJ-EAQ-J_MLZZZ_ZZ-DR-EN-0002	GIS
16.3	BASELINE PLAN	PROJECT 8 DALWHINNIE TO CRUBENMORE DMRB STAGE 3 BASELINE PLAN DRAWING 16.3 ECOLOGICAL RECEPTORS CHAINAGE 20800 TO CHAINAGE 22400	A9P08-CFJ-EAQ-J_ML208_ZZ-DR-EN-0001	GIS
16.4	BASELINE PLAN	PROJECT 8 DALWHINNIE TO CRUBENMORE DMRB STAGE 3 BASELINE PLAN DRAWING 16.4 AIR QUALITY RECEPTORS CHAINAGE 22000 TO CHAINAGE 23600	A9P08-CFJ-EAQ-J_ML220_ZZ-DR-EN-0001	GIS
16.5	BASELINE PLAN	PROJECT 8 DALWHINNIE TO CRUBENMORE DMRB STAGE 3 BASELINE PLAN DRAWING 16.5 AIR QUALITY RECEPTORS CHAINAGE 25400 TO CHAINAGE 26800	A9P08-CFJ-EAQ-J_ML254_ZZ-DR-EN-0001	GIS
16.6	BASELINE PLAN	PROJECT 8 DALWHINNIE TO CRUBENMORE DMRB STAGE 3 BASELINE PLAN DRAWING 16.6 AIR QUALITY RECEPTORS CHAINAGE 29800 TO CHAINAGE 31050	A9P08-CFJ-EAQ-J_ML298_ZZ-DR-EN-0001	GIS



### Legend

- Proposed Scheme Extents
- Affected Road Network
- Special Protection Area (SPA)
- Special Area of Conservation (SAC)
- Site of Special Scientific Interest (SSSI)
- Air Quality:**
  - Air Quality Study Area
  - Air Quality Receptor Point
  - Air Quality Ecological Receptor Point

SCALE 1:35000

REV	SUIT	DATE	DESCRIPTION	BY	APP
P03	SS	NOV 17	FINAL REVISIONS	HA	JF
P02	SS	AUG 17	INTERNAL REVISIONS	HA	JF
P01	SS	MAR 17	DRAFT FOR COMMENT	HA	JF

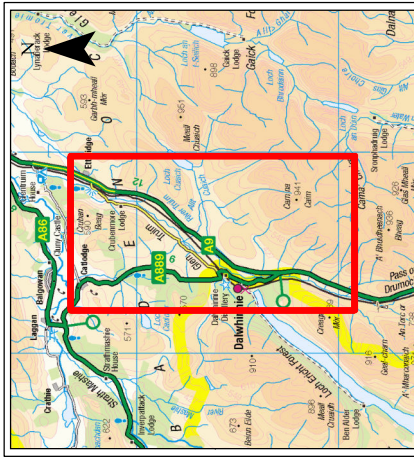
**ch2m** **FAIRHURST**  
 CIVIL & STRUCTURAL ENGINEERS  
 1000 GLENVIEW DRIVE, GLENVIEW, ILLINOIS 60025  
 TEL: 630.354.1200 FAX: 630.354.1201

**A9 QUALITY PARTNERSHIP**  
 QUALITY PARTNERSHIP

**PROJECT 8 DALWHINNIE TO CRUBENMORE EIA ASSESSMENT PLAN DRAWING 16.1 LOCAL AIR QUALITY ASSESSMENT AREAS AND RECEPTORS**

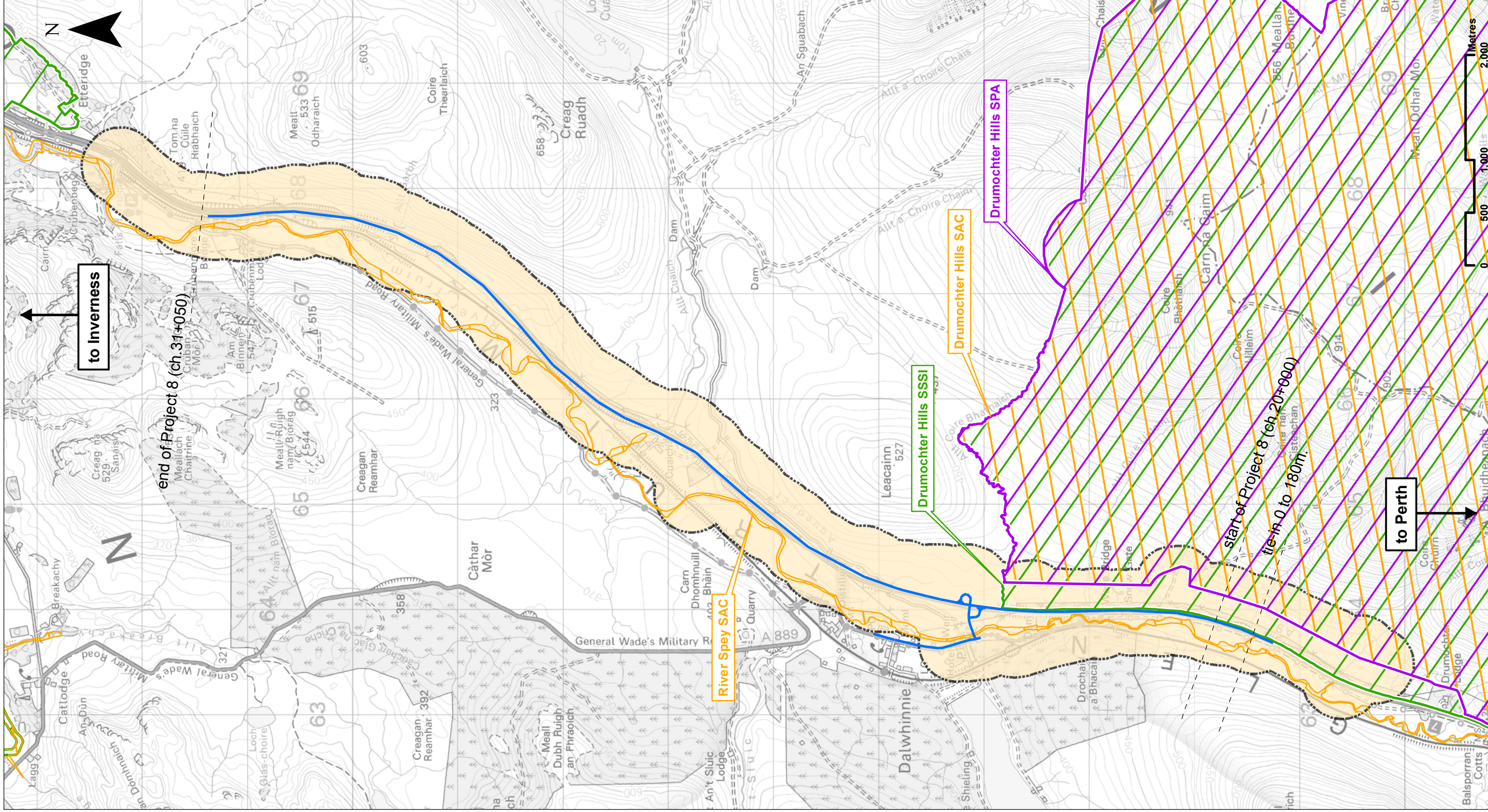
DESIGN: LF  
 DRAWN: HA  
 CHECK: CT  
 DATE: 23/11/2017  
 APP: JF

PROJ: 095208  
 DWG: APP8-GF-EA-QA\_MZZZ\_ZZ-RR-EN-001  
 SHEET: 1 of 1  
 REVISION: CO1  
 SUITABILITY: A3



# Legend

- Proposed Scheme Extents:
- Affected Road Network:
- Special Protection Area (SPA):
- Special Area of Conservation (SAC):
- Site of Special Scientific Interest (SSSI):
- Air Quality:
- Construction Dust Study Area:



**SCALE 1:35000**

REV	SUIT	DATE	DESCRIPTION	BY	APP
P03	SS	NOV 17	FINAL REVISIONS	HA	JF
P02	SS	AUG 17	INTERNAL REVISIONS	HA	JF
P01	SS	MAR 17	DRAFT FOR COMMENT	HA	JF

**ch2m** **FAIRHURST**  
 CIVIL & STRUCTURAL ENGINEERS  
 1000 GLENVIEW DRIVE, GLENVIEW, ILLINOIS 60040  
 TEL: 630.354.2200 FAX: 630.354.2202

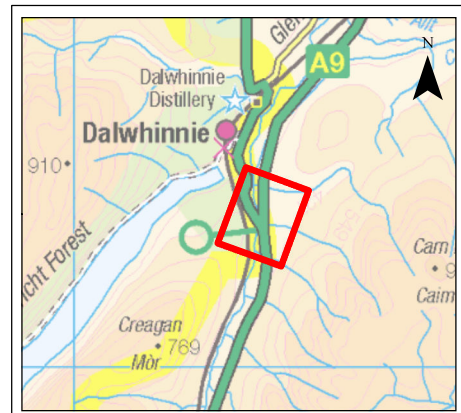
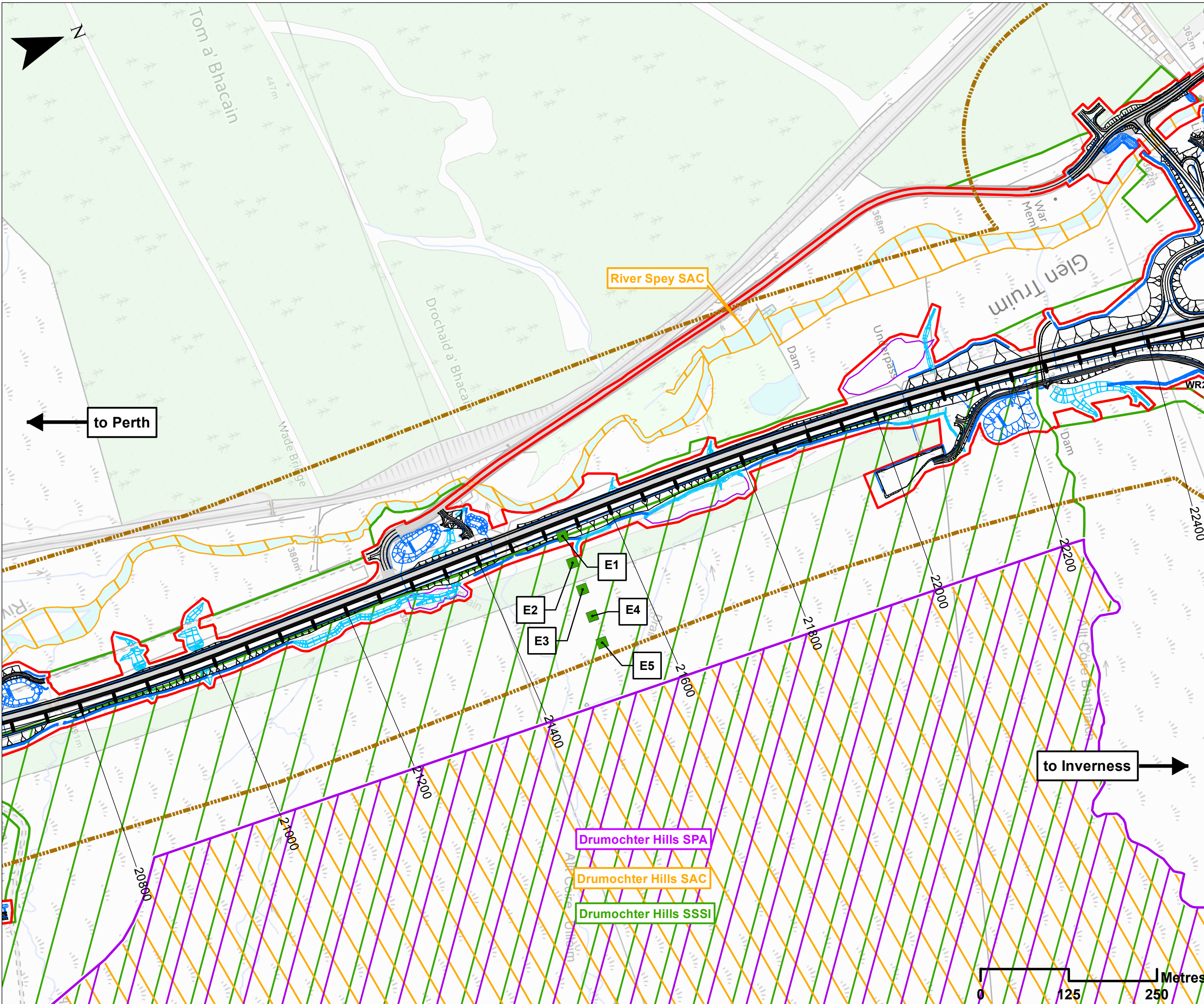
**A9 QUALITY PARTNER TRAINING**  
 Excellence in Construction

**TRANSPORT FOR SCOTLAND**  
 THE NATIONAL TRUST FOR SCOTLAND

**PROJECT 8 DALWHINNIE TO CRUBENMORE EIA ASSESSMENT PLAN DRAWING 16.2 CONSTRUCTION DUST STUDY AREA**

DESIGN:	LF	DRAWN:	HA	CHK:	CT	APP:	JF
DATE:	23/11/2017						
PROJ:	095208						
DWG:	APP08-GF-EAO-L_MZZZ_ZZ-RR-EN-002						
SHEET:	1 of 1	REVISION:	CO1			SUITABILITY:	A3

Reproduced by permission of Ordnance Survey on behalf of HMSO. © Crown copyright and database right. All rights reserved. Transport Scotland Licence number 100046668, 2017



**Legend**

- Proposed Scheme Detail
- Drainage
- Watercourse Diversions
- Compensatory Storage Areas
- Assessment Boundary - Permanent Works
- Assessment Boundary - Temporary Works
- WR1 Winter Resilience Tree Belt (Indicative)
- Special Protection Area (SPA)
- Special Area of Conservation (SAC)
- Site of Special Scientific Interest (SSSI)
- Air Quality Study Area
- Air Quality Ecological Receptor Point
- Receptor ID

**Air Quality:**

- Air Quality Study Area
- Air Quality Ecological Receptor Point
- Receptor ID

**SCALE 1:5000**

REV	SUJ	DATE	DESCRIPTION	HA	JF
P03	S3	NOV 17	FINAL REVISIONS	HA	JF
P02	S3	AUG 17	DESIGN UPDATE	HA	JF
P01	S3	MAR 17	DRAFT FOR COMMENT	HA	JF

**ch2m: FAIRHURST**  
 CH2MHILL Fairhurst JV  
 C/O: City Park 368 Alexandra Parade Glasgow G31 3AU  
 Tel + 44 (0) 141 552 2000 Fax +44 (0) 141 552 2525



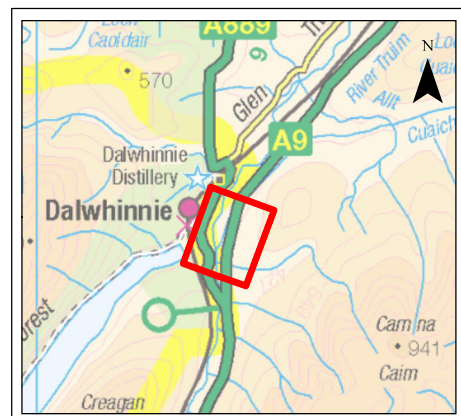
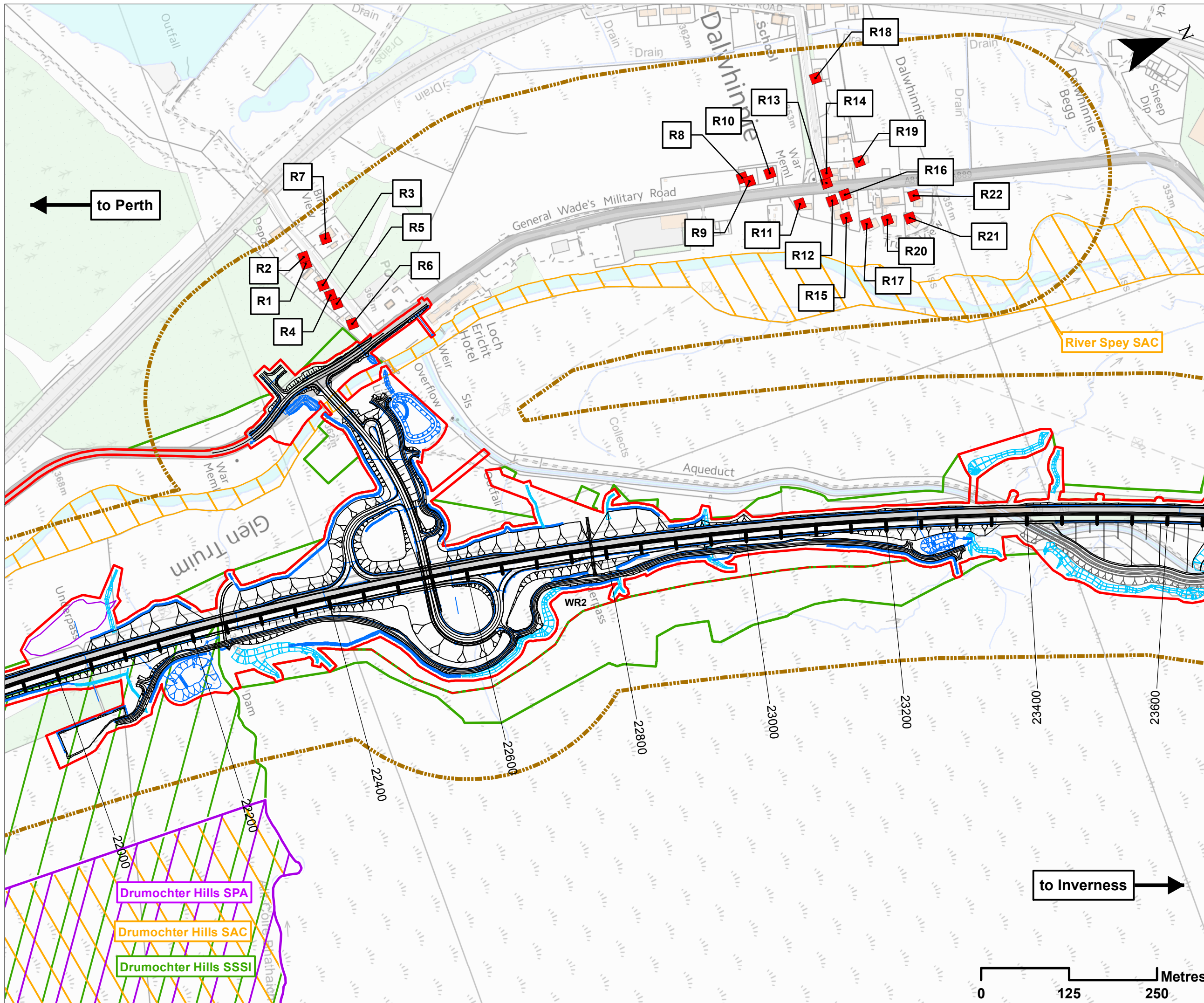
**PROJECT 8 DALWHINNIE TO CRUBENMORE EIA ASSESSMENT PLAN DRAWING 16.3 ECOLOGICAL RECEPTORS chainage 20800 to 22400**

DESIGN: LF	DRAWN: HA	CHK: CT	APP: JF
---------------	--------------	------------	------------

DATE: 23/11/2017  
 PROJ: 495298

DWG: A9P08-CFJ-EAQ-J_ML208_ZZ-DR-EN-0001		
SHEET: 1 OF 4	REVISION: C01	SUITABILITY: A3

Document Path: \\g:\projects\geospatial\projects\A9\_Dualling\GIS\BMS\2\_Maps\16\16.3\_Air\_Quality\Drawing\_16\_3.mxd



- ### Legend
- Proposed Scheme Detail
  - Aqueduct Diversion
  - Watercourse Diversions
  - Drainage
  - Compensatory Storage Areas
  - Assessment Boundary - Permanent Works
  - Assessment Boundary - Temporary Works
  - WR1 Winter Resilience Tree Belt (Indicative)
  - Special Protection Area (SPA)
  - Special Area of Conservation (SAC)
  - Site of Special Scientific Interest (SSSI)
- ### Air Quality:
- Air Quality Study Area
  - Air Quality Receptor Point
  - R1** Receptor ID

**SCALE 1:5000**

P03	S3	NOV 17	FINAL REVISIONS	HA	JF
P02	S3	AUG 17	DESIGN UPDATE	HA	JF
P01	S3	MAR 17	DRAFT FOR COMMENT	HA	JF
REV	SUI	DATE	DESCRIPTION	HA	APP

**ch2m: FAIRHURST**  
 CH2MHILL Fairhurst JV  
 C/O: City Park 368 Alexandra Parade Glasgow G31 3AU  
 Tel + 44 (0) 141 552 2000 Fax +44 (0) 141 552 2525

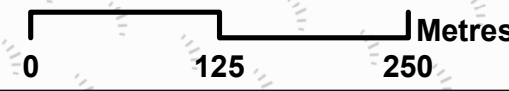


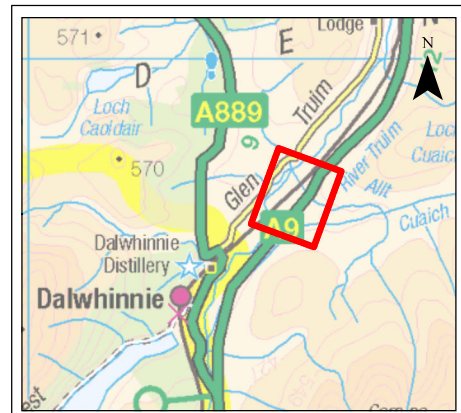
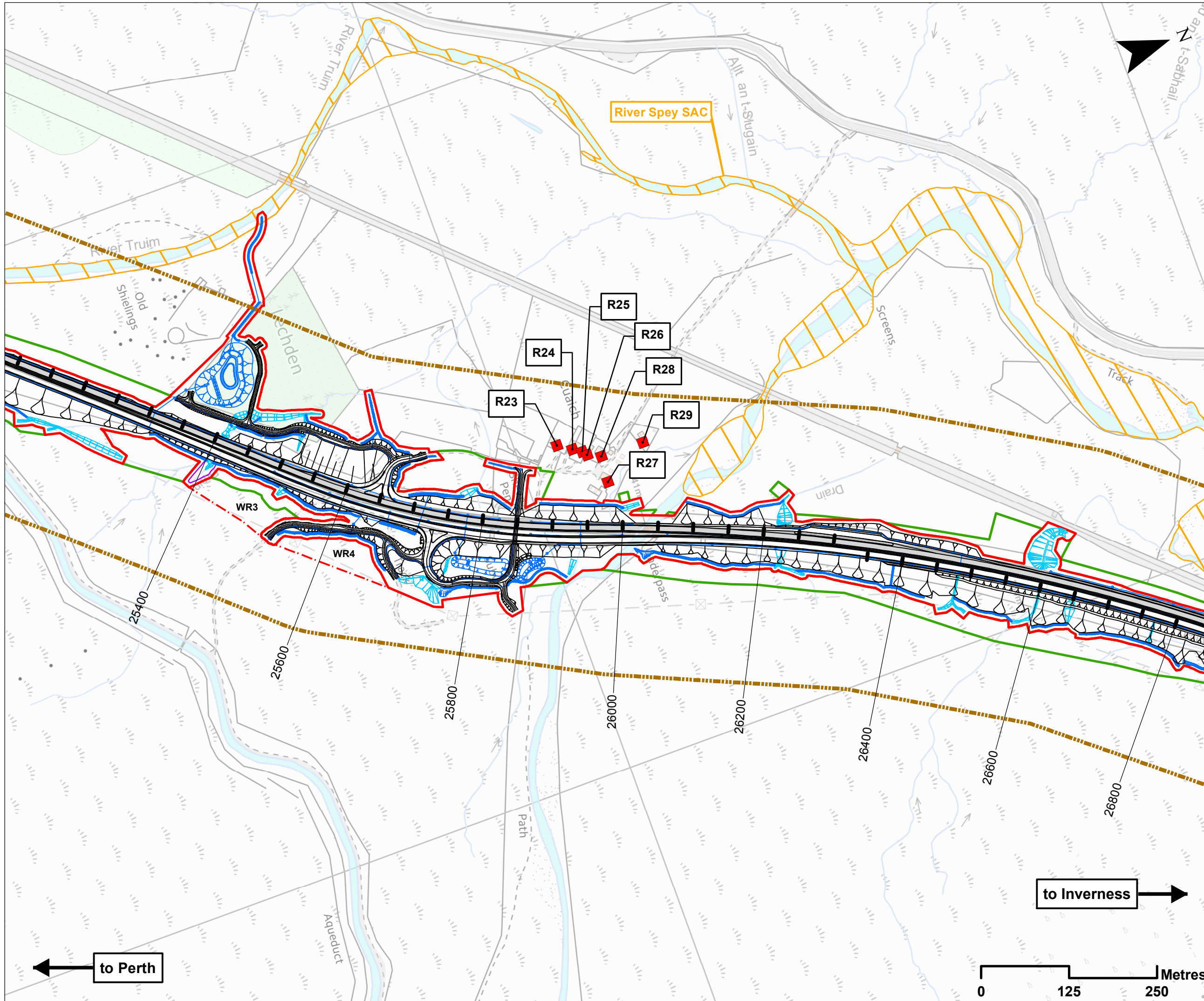
**PROJECT 8 DALWHINNIE TO CRUBENMORE EIA ASSESSMENT PLAN**  
**DRAWING 16.4**  
**AIR QUALITY RECEPTORS**  
 chainage 22000 to 23600

DESIGN: LF	DRAWN: HA	CHK: CT	APP: JF
---------------	--------------	------------	------------

DATE: 24/11/2017  
 PROJ: 495298

DWG: A9P08-CFJ-EAQ-J_ML220_ZZ-DR-EN-0001	SHEET: 2 of 4	REVISION: C01	SUITABILITY: A3
--	------------------	------------------	--------------------





**Legend**

- Proposed Scheme Detail
  - Watercourse Diversions
  - Drainage
  - Compensatory Storage Areas
  - Assessment Boundary - Permanent Works
  - Assessment Boundary - Temporary Works
  - WR1 Winter Resilience Tree Belt (Indicative)
  - Special Area of Conservation (SAC)
- Air Quality:**
- Air Quality Study Area
  - Air Quality Receptor Point
  - R1 Receptor ID

SCALE 1:5000

P03	S3	NOV 17	FINAL REVISIONS	HA	JF
P02	S3	AUG 17	DESIGN UPDATE	HA	JF
P01	S3	MAR 17	DRAFT FOR COMMENT	HA	JF
REV	SUIT	DATE	DESCRIPTION	BY	APP

**ch2m. FAIRHURST**

CH2MHILL Fairhurst JV  
 C/O: City Park 368 Alexandra Parade Glasgow G31 3AU  
 Tel + 44 (0) 141 552 2000 Fax +44 (0) 141 552 2525



**PROJECT 8 DALWHINNIE TO CRUBENMORE EIA ASSESSMENT PLAN**  
**DRAWING 16.5**  
**AIR QUALITY RECEPTORS**  
 chainage 25400 to 26800

DESIGN: LF	DRAWN: HA	CHK: CT	APP: JF
---------------	--------------	------------	------------

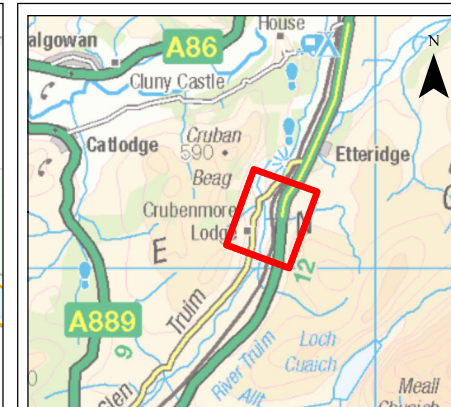
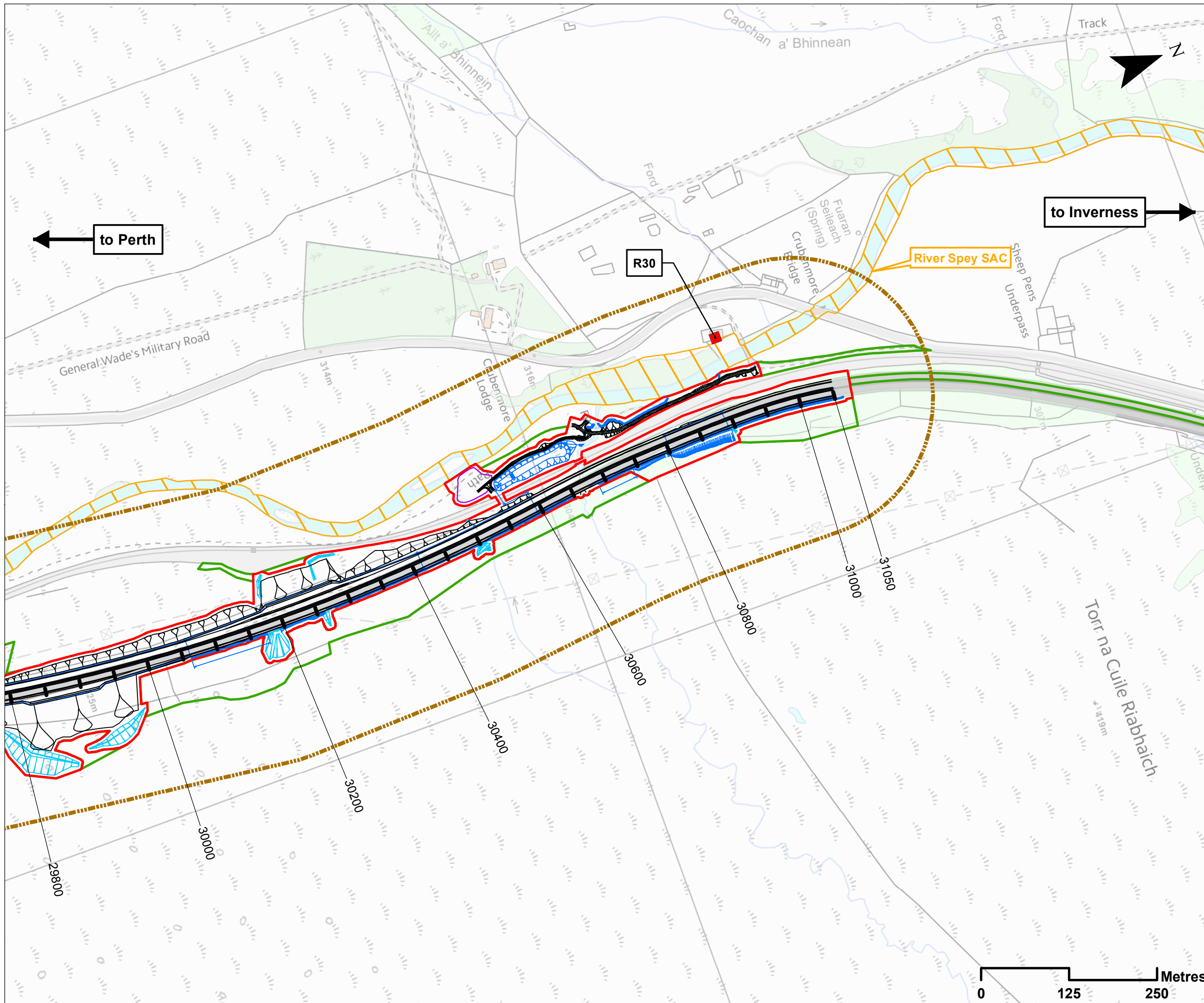
DATE: 23/11/2017  
 PROJ: 495298

DWG: A9P08-CFJ-EAQ-J\_ML254\_ZZ-DR-EN-0001

SHEET: 3 OF 4	REVISION: C01	SUITABILITY: A3
------------------	------------------	--------------------



Document Path: \\g:\p08\Geospatial\Projects\A9\_Dualling\GIS\DMR\3\4\_2\_Maps\016\Chapter\_16\_Air\_Quality\Drawing\_16\_5.mxd



**Legend**

- Proposed Scheme Detail
- Watercourse Diversions
- Drainage
- Compensatory Storage Areas
- Assessment Boundary - Permanent Works
- Assessment Boundary - Temporary Works
- Special Area of Conservation (SAC)

**Air Quality:**

- Air Quality Study Area
- Air Quality Receptor Point
- Receptor ID

SCALE 1:5000

P03	S3	NOV 17	FINAL REVISIONS	HA	JF
P02	S3	AUG 17	DESIGN UPDATE	HA	JF
P01	S3	MAR 17	DRAFT FOR COMMENT	HA	JF
REV	SUI	DATE	DESCRIPTION	BY	APP

**ch2m. FAIRHURST**

CH2MHILL Fairhurst JV  
 C/O: City Park 368 Alexandra Parade Glasgow G31 3AU  
 Tel + 44 (0) 141 552 2000 Fax +44 (0) 141 552 2525



**PROJECT 8 DALWHINNIE TO CRUBENMORE EIA  
 ASSESSMENT PLAN  
 DRAWING 16.6  
 AIR QUALITY RECEPTORS  
 chainage 29800 to 31050**

DESIGN: LF	DRAWN: HA	CHK: CT	APP: JF
---------------	--------------	------------	------------

DATE: 23/11/2017

PROJ: 495298

DWG: A9P08-CFJ-EAQ-J\_ML298\_ZZ-DR-EN-0001

SHEET: 4 OF 4	REVISION: C01	SUITABILITY: A3
------------------	------------------	--------------------

