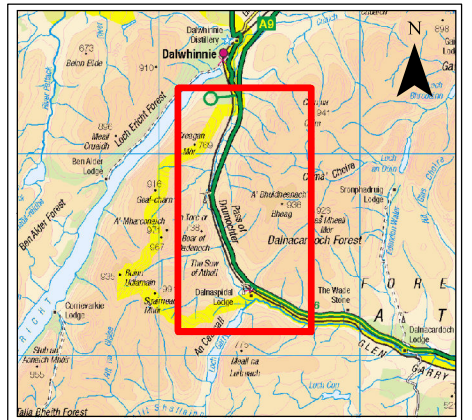
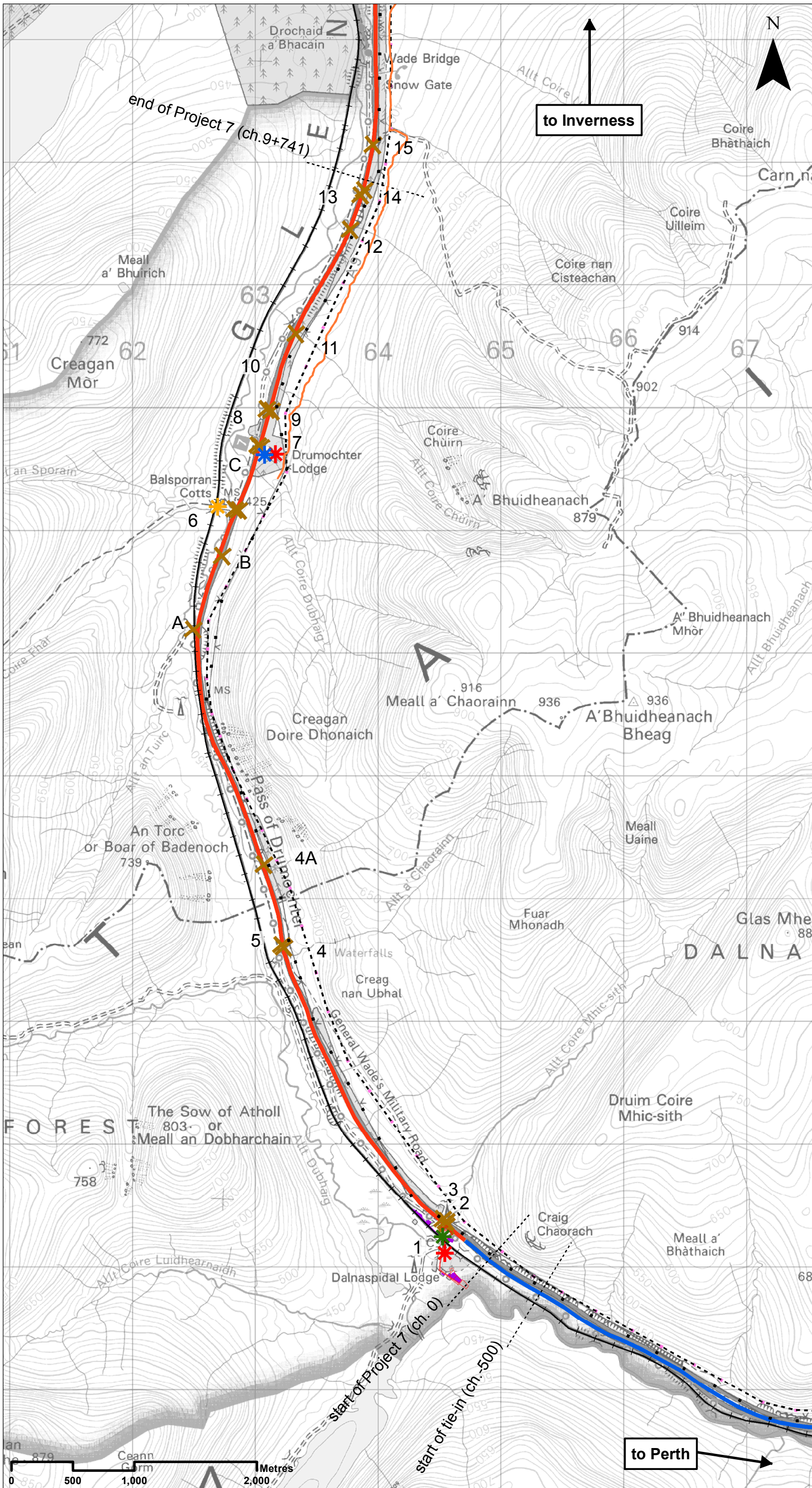


## Community and Private Assets

Drawing No.	Drawing Type	Drawing Title	Projectwise Drawing Reference	Software
8.1	BASELINE PLAN	COMMUNITY AND PRIVATE ASSETS	A9P07-CFJ-EGN-L_ZZZZZ_ZZ-DR-EN-0001	GIS
8.2	ASSESSMENT PLAN	COMMUNITY AND PRIVATE ASSETS ch.-500 to 1800	A9P07-CFJ-EGN-L_ML000_ZZ-DR-EN-0002	GIS
8.3	ASSESSMENT PLAN	COMMUNITY AND PRIVATE ASSETS ch.1800 to 5000	A9P07-CFJ-EGN-L_ML018_ZZ-DR-EN-0003	GIS
8.4	ASSESSMENT PLAN	COMMUNITY AND PRIVATE ASSETS ch.5000 to 8200	A9P07-CFJ-EGN-L_ML050_ZZ-DR-EN-0001	GIS
8.5	ASSESSMENT PLAN	COMMUNITY AND PRIVATE ASSETS ch.8200 to 9741	A9P07-CFJ-EGN-L_ML082_ZZ-DR-EN-0001	GIS
8.6	BASELINE PLAN	LAND CAPABILITY FOR AGRICULTURE	A9P07-CFJ-EGN-L_ZZZZZ_ZZ-DR-EN-0002	GIS





- ### Legend
- Proposed Scheme Extents
  - Existing Dualled
  - Existing Single
  - Highland Mainline railway
  - Beauly to Denny Overhead Powerline
  - Planning Permission for retention of BDL Track
  - ▨ Other Planning Permissions
  - Residential Properties
  - Beauly to Denny Pylons
  - Decommissioned Pylon
  - ★ Balsporran Cottages
  - ★ Drumochter Lodge
  - ★ Agricultural Buildings
  - ★ Garryview (dilapidated)
  - ✕ Access

**SCALE 1:30000**

P03	S3	NOV 2017	FINAL REVISIONS	ST	JF
P02	S3	SEPT 2017	DESIGN UPDATE	ST	JF
P01	S3	JUN 2017	DRAFT FOR COMMENT	ST	JF
REV	SUIT	DATE	DESCRIPTION	BY	APP

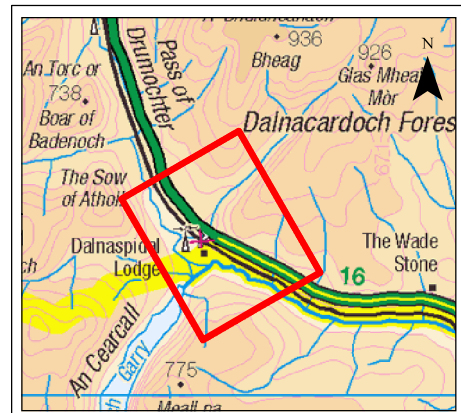
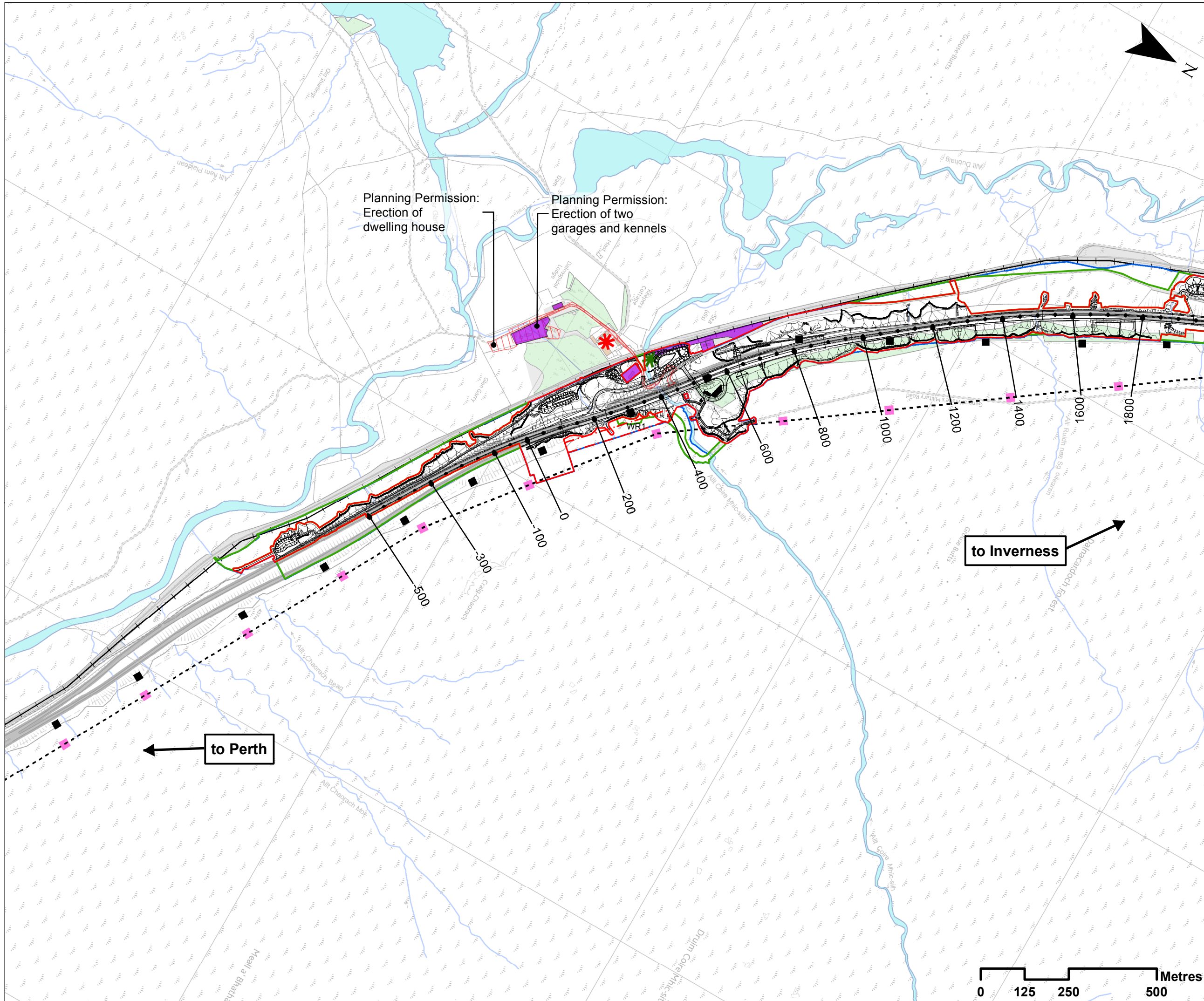
**ch2m FAIRHURST**  
 CH2MHILL Fairhurst JV  
 C/O: City Park 368 Alexandra Parade Glasgow G31 3AU  
 Tel +44 (0) 141 552 2000 Fax +44 (0) 141 552 2525



**PROJECT 7 GLEN GARRY TO DALWHINNIE EIA  
 BASELINE PLAN  
 DRAWING 8.1  
 COMMUNITY AND PRIVATE ASSETS**

DESIGN: EH	DRAWN: ST	CHK: DW	APP: JF
DATE: 29/11/2017			
PROJ: 495298			
DWG: A9P07-CF3-EGN-L_ZZZZZ_ZZ-DR-EN-001			
SHEET: 1 of 1	REVISION: C01	SUITABILITY: A3	





- ### Legend
- Proposed Scheme Detail
  - Assessment Boundary - Permanent Works
  - Assessment Boundary - Temporary Works
  - Land Made Available
  - WR1: Winter Resilience
  - Highland Mainline railway
  - Beaulieu to Denny Overhead Powerline
  - Residential Properties
  - Beaulieu to Denny Pylons
  - Decommissioned Pylon
  - Planning Permissions
  - Agricultural Buildings
  - Garryview (dilapidated)

SCALE 1:10000

REV	NO	DATE	DESCRIPTION	BY	APP
P03	S3	NOV 2017	FINAL REVISIONS	ST	JF
P02	S3	SEPT 2017	DESIGN UPDATE	ST	JF
P01	S3	JUN 2017	DRAFT FOR COMMENT	ST	JF

**ch2m. FAIRHURST**  
 CH2MHILL Fairhurst JV  
 C/O: City Park 368 Alexandra Parade Glasgow G31 3AU  
 Tel + 44 (0) 141 552 2000 Fax +44 (0) 141 552 2525



**PROJECT 7 GLEN GARRY TO DALWHINNIE EIA  
 ASSESSMENT PLAN  
 DRAWING 8.2  
 COMMUNITY AND PRIVATE ASSETS  
 chainage -500 to 1800**

DESIGN: EH	DRAWN: ST	CHK: DW	APP: JF
---------------	--------------	------------	------------

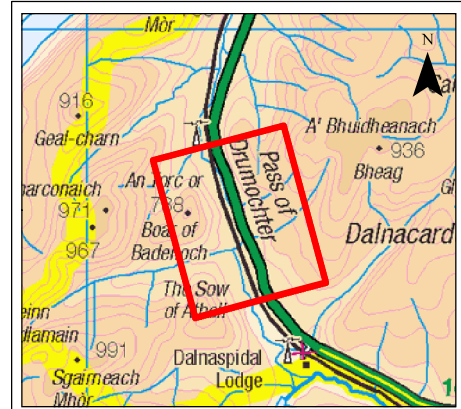
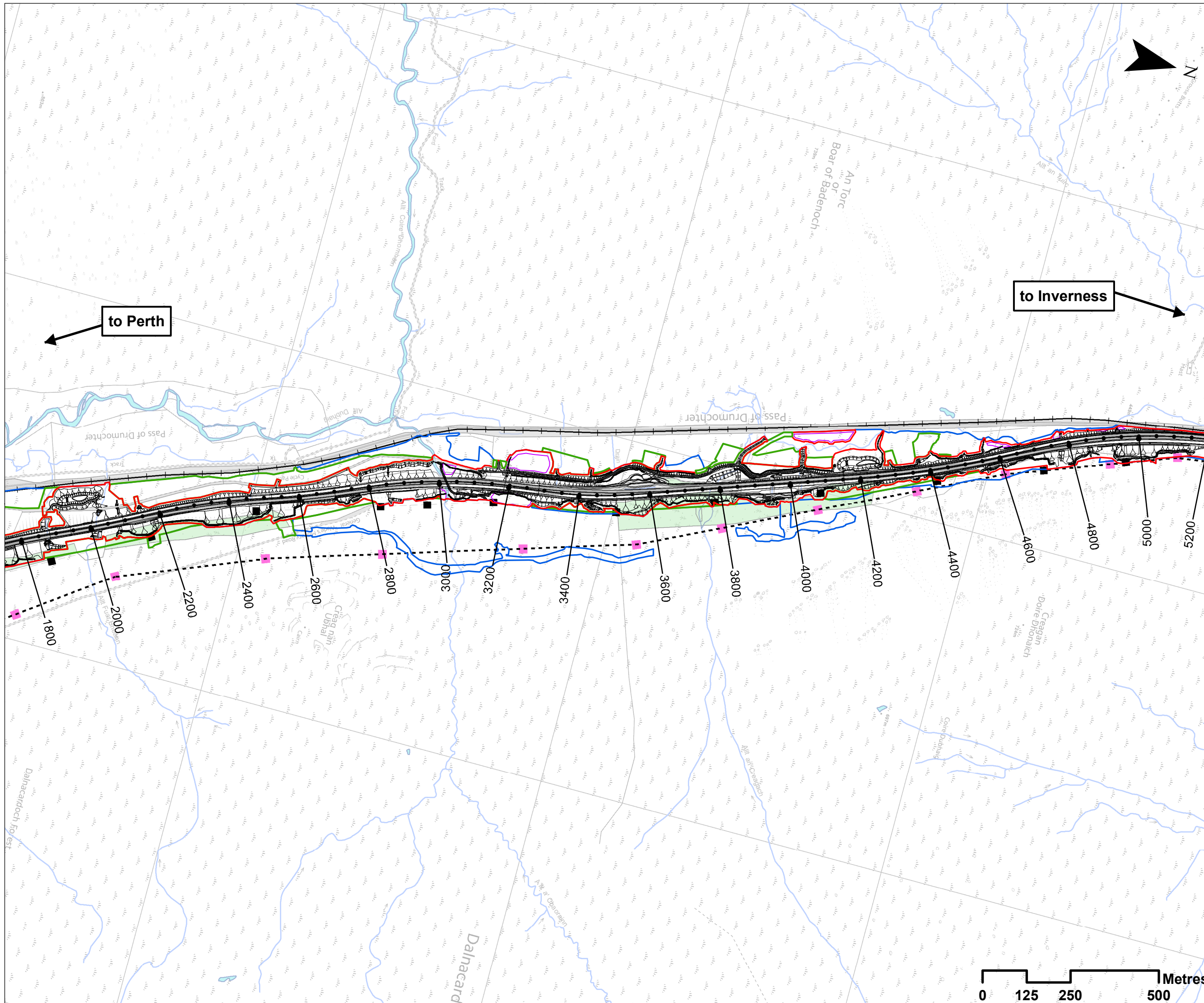
DATE: 01/12/2017  
 PROJ: 495298

DWG: A9P07-CFJ-EGN-L ML000_ZZ-DR-EN-0002		
SHEET: 1 OF 4	REVISION: C01	SUITABILITY: A3



Document Path: J:\916161\Stage\_3\916161\Stage\_3\916161\Community\_Privats\_A Assets\P07\_Figure\_8.2\_APP07\_C01-DR-EN-0002.mxd





### Legend

- Proposed Scheme Detail
- Compensatory Storage Areas
- Assessment Boundary - Permanent Works
- Assessment Boundary - Temporary Works
- Land Made Available
- Highland Mainline railway
- Beaulieu to Denny Overhead Powerline
- Beaulieu to Denny Pylons
- Decommissioned Pylon

SCALE 1:10000

P03	S3	NOV 2017	FINAL REVISIONS	ST	JF
P02	S3	SEPT 2017	DESIGN UPDATE	ST	JF
P01	S3	JUN 2017	DRAFT FOR COMMENT	ST	JF
REV	SUI	DATE	DESCRIPTION	BY	APP

**ch2m. FAIRHURST**

CH2MHILL Fairhurst JV  
 C/O: City Park 368 Alexandra Parade Glasgow G31 3AU  
 Tel + 44 (0) 141 552 2000 Fax +44 (0) 141 552 2525



**PROJECT 7 GLEN GARRY TO DALWHINNIE EIA  
 ASSESSMENT PLAN  
 DRAWING 8.3  
 COMMUNITY AND PRIVATE ASSETS  
 chainage 1800 to 5000**

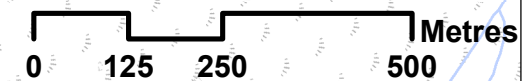
DESIGN: EH	DRAWN: ST	CHK: DB	APP: JF
---------------	--------------	------------	------------

DATE: 01/12/2017

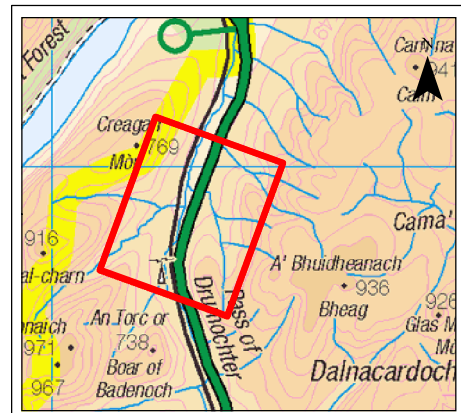
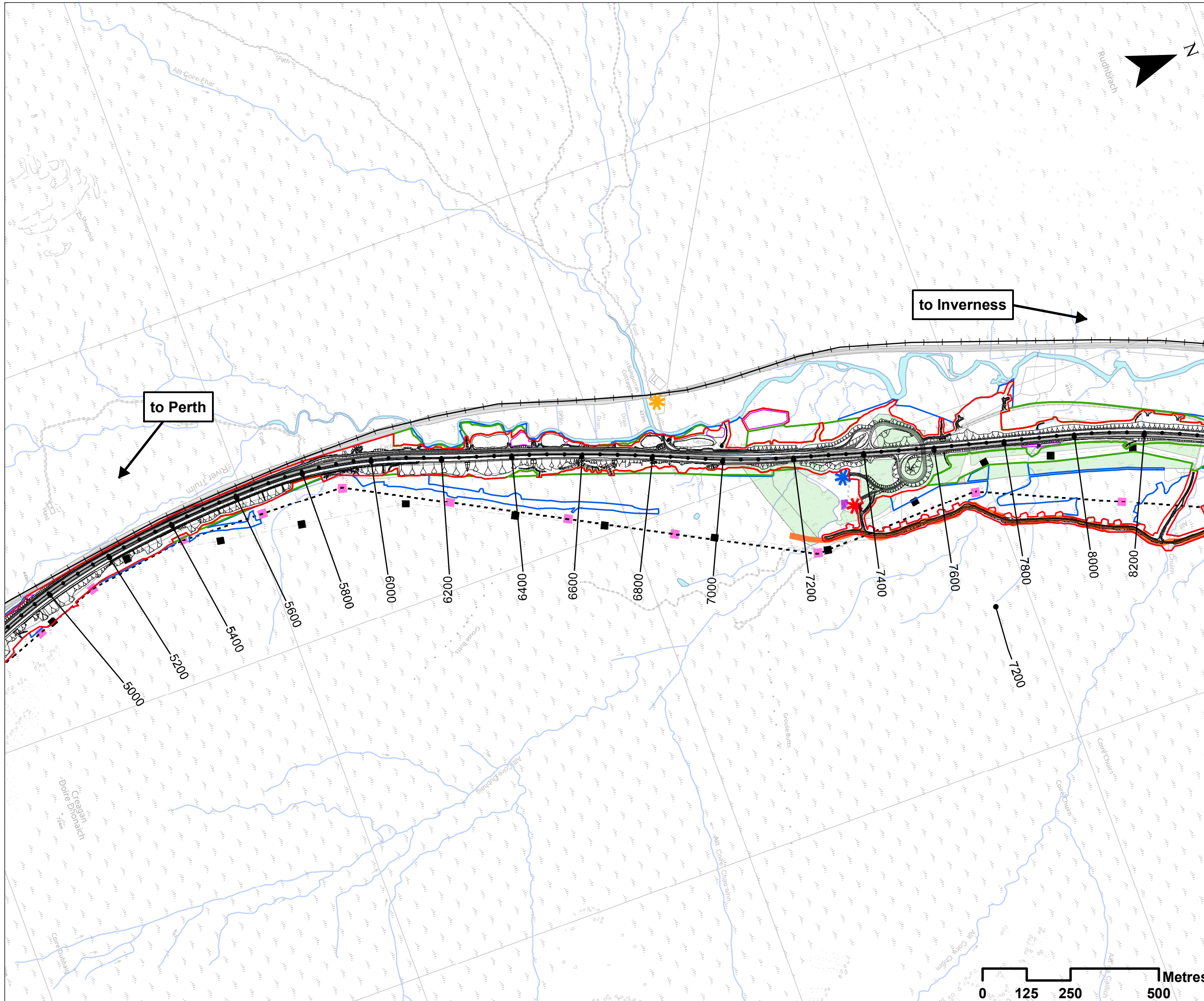
PROJ: 495298

DWG: A9P07-CFJ-EGN-L ML018 ZZ-DR-EN-0003

SHEET: 2 OF 4	REVISION: C01	SUITABILITY: A3
------------------	------------------	--------------------







- ### Legend
- Proposed Scheme Detail
  - Compensatory Storage Areas
  - Assessment Boundary - Permanent Works
  - Assessment Boundary - Temporary Works
  - Land Made Available
  - Planning Permission for retention of BDL Track
  - Highland Mainline railway
  - Beauly to Denny Overhead Powerline
  - Residential Properties
  - Beauly to Denny Pylons
  - Decommissioned Pylon
  - Balsporran Cottages
  - Drumochter Lodge
  - Agricultural Buildings

**SCALE 1:10000**

REV	SUI	DATE	DESCRIPTION	BY	APP
P03	S3	NOV 2017	FINAL REVISIONS	ST	JF
P02	S3	SEPT 2017	DESIGN UPDATE	ST	JF
P01	S3	JUN 2017	DRAFT FOR COMMENT	ST	JF

**ch2m: FAIRHURST**  
 CH2MHILL Fairhurst JV  
 C/O: City Park 368 Alexandra Parade Glasgow G31 3AU  
 Tel + 44 (0) 141 552 2000 Fax +44 (0) 141 552 2525



**PROJECT 7 GLEN GARRY TO DALWHINNIE EIA  
 ASSESSMENT PLAN  
 DRAWING 8.4  
 COMMUNITY AND PRIVATE ASSETS  
 chainage 5000 to 8200**

DESIGN: EH	DRAWN: ST	CHK: DW	APP: JF
---------------	--------------	------------	------------

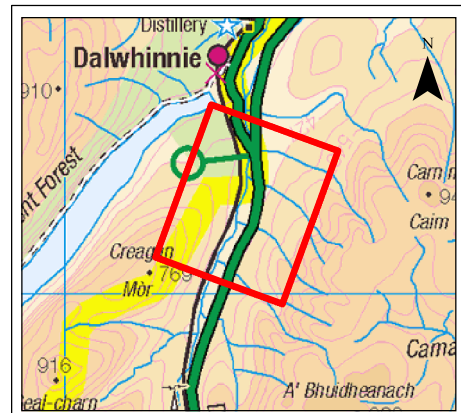
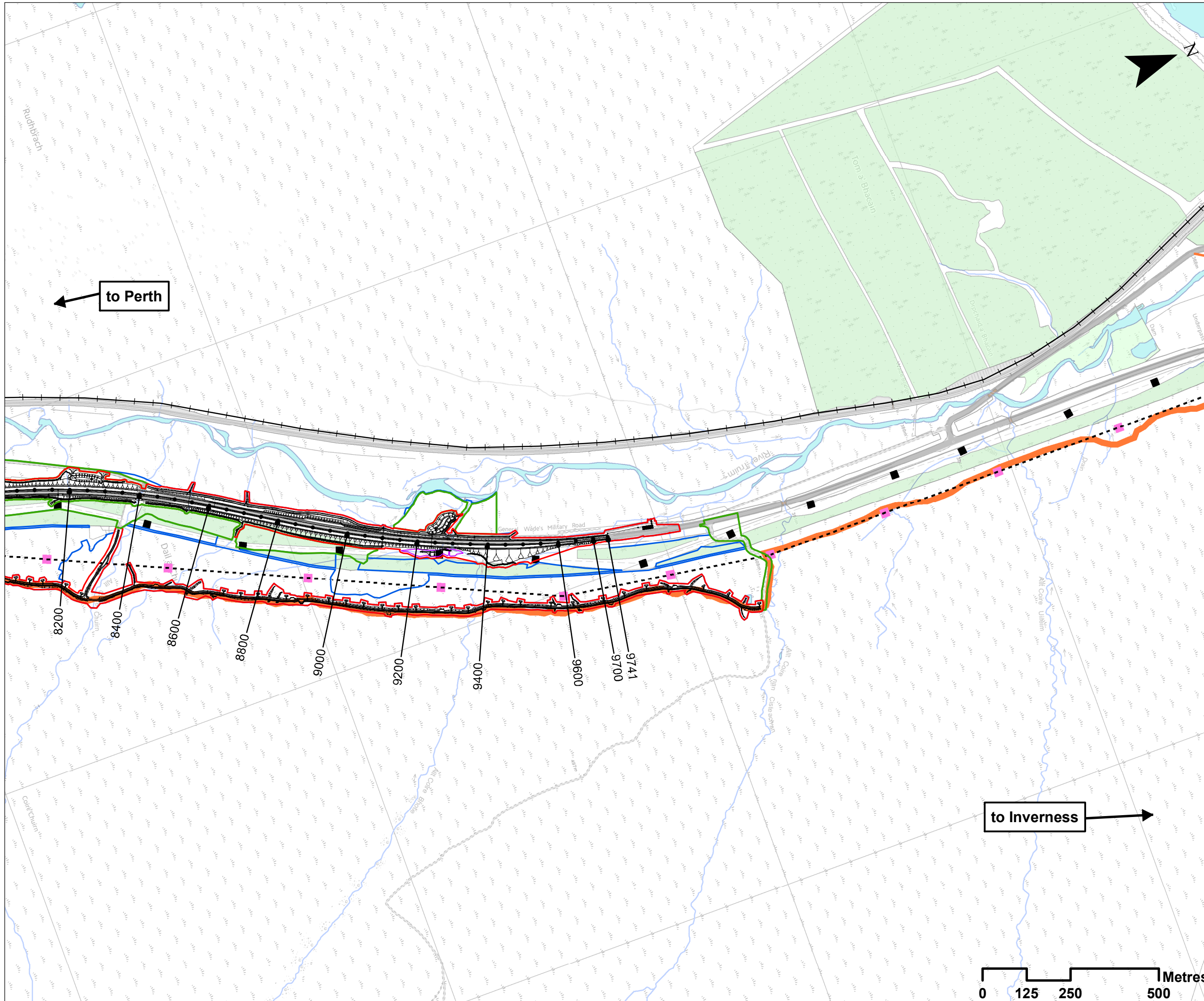
DATE: 01/12/2017  
 PROJ: 495298

DWG: A9P07-CFJ-EGN-L_ML050_ZZ-DR-EN-0001		
SHEET: 3 OF 4	REVISION: C01	SUITABILITY: A3



Document Path: J:\9161615\Stage\_3\9161615\Stage\_3\9161615\Community\_Privats\_Assess\Fig\_8.4\_A9P07-CFJ-EGN-L\_ML050\_ZZ-DR-EN-0001.mxd





- ### Legend
- Proposed Scheme Detail
  - Compensatory Storage Areas
  - Assessment Boundary - Permanent Works
  - Assessment Boundary - Temporary Works
  - Land Made Available
  - Planning Permission for retention of BDL Track
  - Highland Mainline railway
  - Beaulieu to Denny Overhead Powerline
  - Beaulieu to Denny Pylons
  - Decommissioned Pylon

**SCALE 1:10000**

REV	SUI	DATE	DESCRIPTION	BY	APP
P03	S3	NOV 2017	FINAL REVISIONS	ST	JF
P02	S3	SEPT 2017	DESIGN UPDATE	ST	JF
P01	S3	JUN 2017	DRAFT FOR COMMENT	ST	JF

**ch2m FAIRHURST**  
 CH2MHILL Fairhurst JV  
 C/O: City Park 368 Alexandra Parade Glasgow G31 3AU  
 Tel + 44 (0) 141 552 2000 Fax +44 (0) 141 552 2525



**PROJECT 7 GLEN GARRY TO DALWHINNIE EIA  
 ASSESSMENT PLAN  
 DRAWING 8.5  
 COMMUNITY AND PRIVATE ASSETS  
 chainage 8200 to 9741**

DESIGN: EH	DRAWN: ST	CHK: DW	APP: JF
---------------	--------------	------------	------------

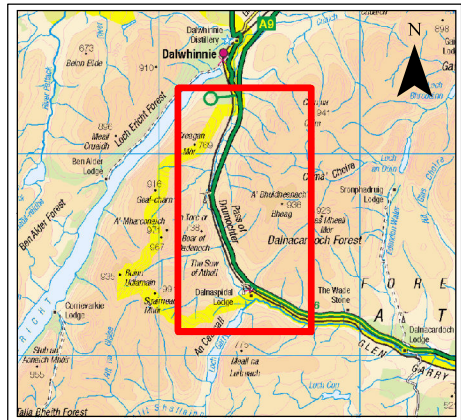
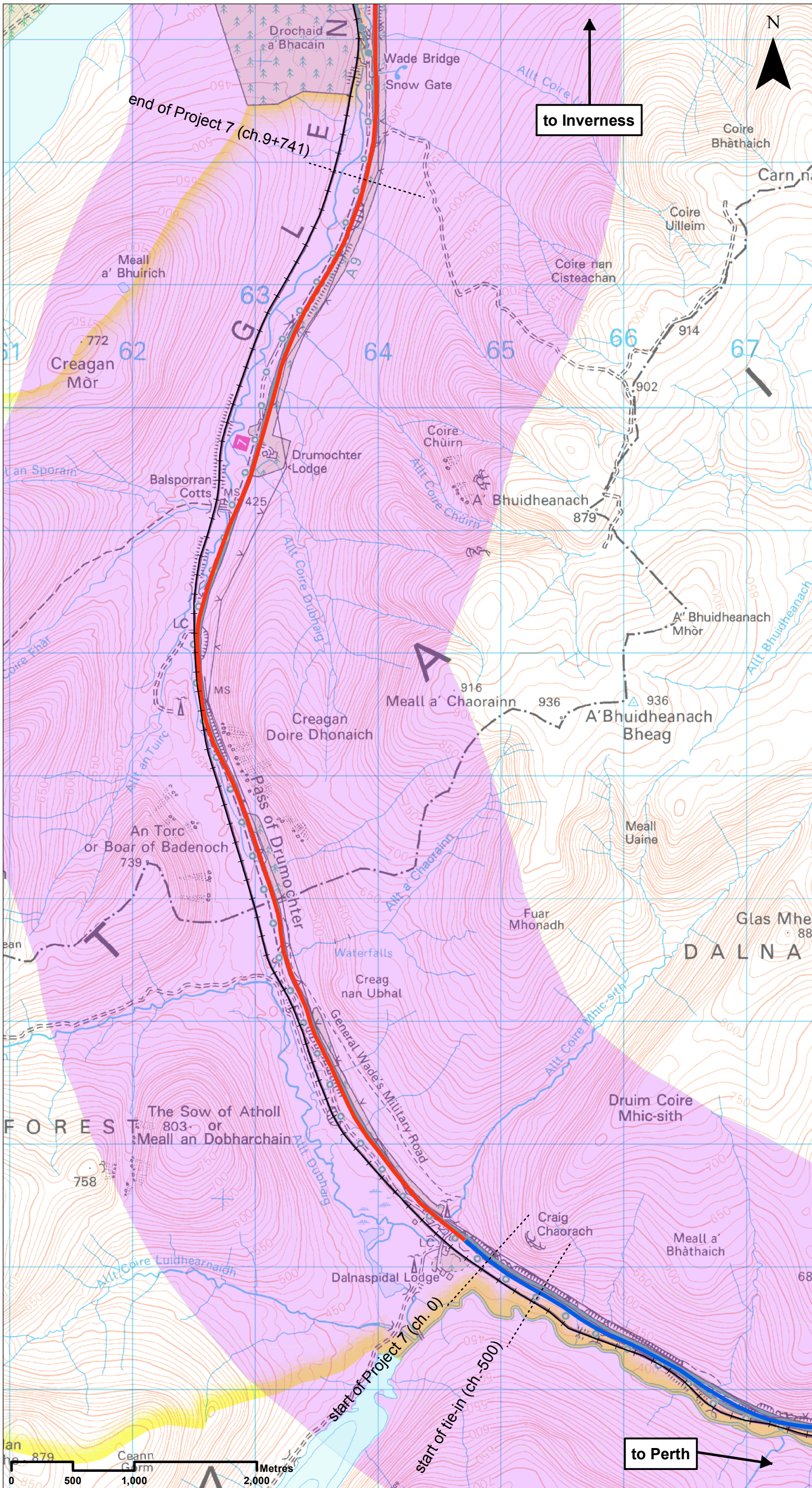
DATE: 01/12/2017  
 PROJ: 495298

DWG: A9P07-CF-J-EGN-L ML082-ZZ-DR-EN-0001		
SHEET: 4 OF 4	REVISION: C01	SUITABILITY: A3



Document Path: J:\91616161\Stage\_3\91616161\Chapter\_8\_Community\_Privats\_Assets\91616161\_Figure\_8.5\_A9P07-CF-J-EGN-L ML082-ZZ-DR-EN-0001.mxd





- ### Legend
- Proposed Scheme Extents
  - Existing Dualled
  - Existing Single
  - Highland Mainline railway
  - Rough Grazing (Grade 6.1-7)
  - Water Body

**SCALE 1:30000**

P03	S3	NOV 2017	FINAL REVISIONS	ST	JF
P02	S3	SEPT 2017	INTERNAL REVISIONS	ST	JF
P01	S3	JUN 2017	DRAFT FOR COMMENT	ST	JF
REV	SUIT	DATE	DESCRIPTION	BY	APP

**ch2m FAIRHURST**  
 CH2MHILL Fairhurst JV  
 CO: City Park 368 Alexandra Parade Glasgow G31 3AU  
 Tel + 44 (0) 141 552 2000 Fax +44 (0) 141 552 2525



**PROJECT 7 GLEN GARRY TO DALWHINNIE EIA  
 BASELINE PLAN  
 DRAWING 8.6  
 LAND CAPABILITY FOR AGRICULTURE**

DESIGN: EH	DRAWN: ST	CHK: DW	APP: JF
DATE: 21/11/2017			
PROJ: 495298			
DWG: A9P07-CF3-EGN-L_ZZZZZ_ZZ-DR-EN-0002			
SHEET: 1 of 1	REVISION: C01	SUITABILITY: A3	