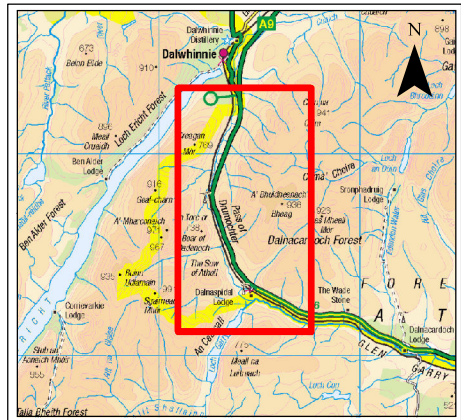
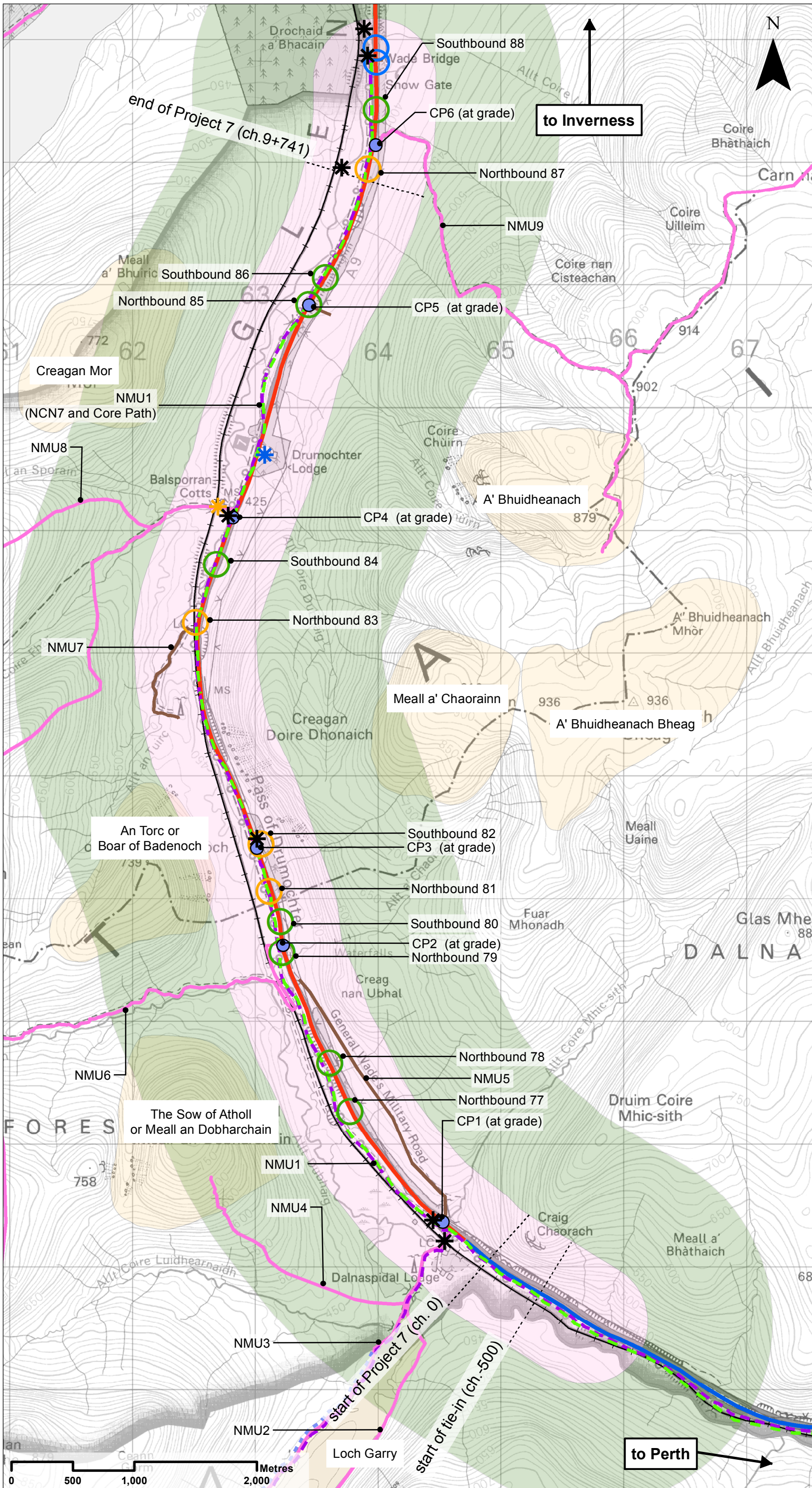


## Effects on All Travellers

Drawing No.	Drawing Type	Drawing Title	Projectwise Drawing Reference	Software
9.1	BASELINE PLAN	ALL TRAVELLERS - OVERVIEW	A9P07-CFJ-EGN-L_ZZZZZ_ZZ-DR-EN-0003	GIS
9.2	BASELINE PLAN	ALL TRAVELLERS - VIEWS FROM THE ROAD	A9P07-CFJ-EGN-L_ZZZZZ_ZZ-DR-EN-0013	GIS
9.3	ASSESSMENT PLAN	ALL TRAVELLERS - VIEWS FROM THE ROAD PROPOSED SCHEME	A9P07-CFJ-EGN-L_ZZZZZ_ZZ-DR-EN-0014	GIS
9.4	ASSESSMENT PLAN	ALL TRAVELLERS – NMUs ch. -500 to 1800	A9P07-CFJ-EGN-L_ML000_ZZ-DR-EN-0004	GIS
9.5	ASSESSMENT PLAN	ALL TRAVELLERS – NMUs ch. 1800 to 5000	A9P07-CFJ-EGN-L_ML018_ZZ-DR-EN-0005	GIS
9.6	ASSESSMENT PLAN	ALL TRAVELLERS – NMUs ch. 5000 to 8200	A9P07-CFJ-EGN-L_ML050_ZZ-DR-EN-0003	GIS
9.7	ASSESSMENT PLAN	ALL TRAVELLERS – NMUs ch. 8200 to 9741	A9P07-CFJ-EGN-L_ML082_ZZ-DR-EN-0003	GIS



- ### Legend
- Proposed Scheme Extents
  - Existing Dualled
  - Existing Single
  - Highland Mainline railway
  - Bus Layby
  - Type A Layby
  - Type B Layby
  - Crossing Points (CP)
  - ★ Balsporran Cottages
  - ★ Drumochter Lodge
  - ★ Parking Areas
  - 1km Assessment Study Area
  - Wider 3km Study Area
  - Outdoor Areas (including Munros, Corbetts and Lochs)
- ### NMU Routes
- NCN7 (Off Road)
  - PKC Core Path
  - CNPA Core Path
  - Hill Walking Routes
  - Informal Routes

SCALE 1:30000

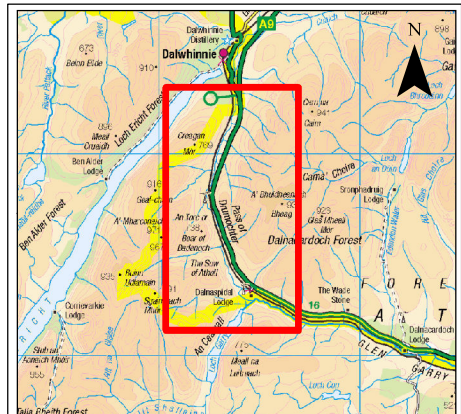
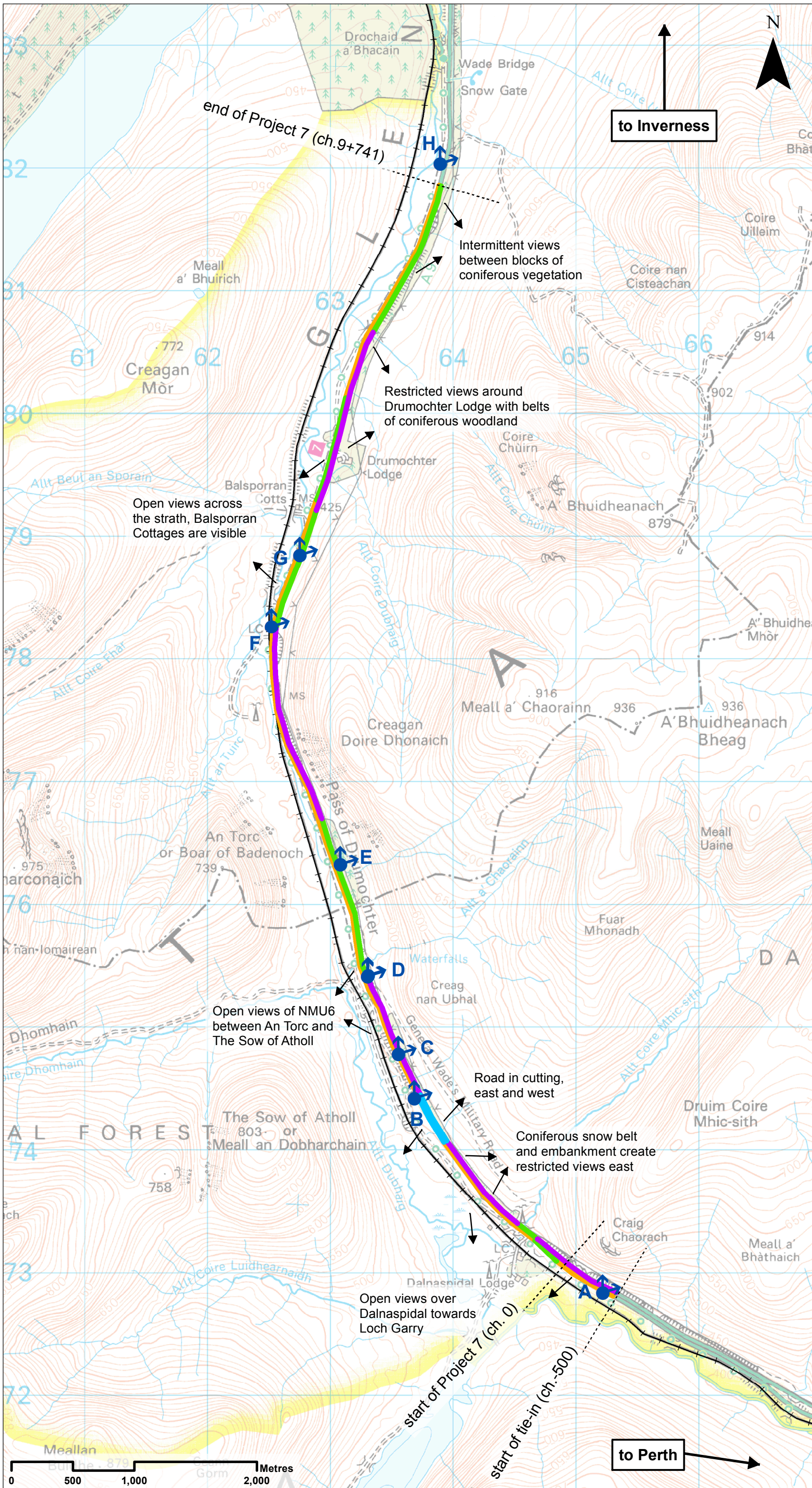
REV	SUIT	DATE	DESCRIPTION	BY	APP
P03	S3	NOV 2017	FINAL REVISIONS	ST	JF
P02	S3	SEPT 2017	DESIGN UPDATE	ST	JF
P01	S3	JUN 2017	DRAFT FOR COMMENT	ST	JF

**ch2m** FAIRHURST  
 CH2MHILL Fairhurst JV  
 CO: City Park 368 Alexandra Parade Glasgow G31 3AU  
 Tel +44 (0) 141 552 2000 Fax +44 (0) 141 552 2525



**PROJECT 7 GLEN GARRY TO DALWHINNIE EIA  
 BASELINE PLAN  
 DRAWING 9.1  
 ALL TRAVELLERS - OVERVIEW**

DESIGN: LF	DRAWN: ST	CHK: SWG	APP: JF
DATE: 24/11/2017			
PROJ: 495298			
DWG: A9P07-CF3-EGN-L_ZZZZZ_ZZ-DR-EN-0003			
SHEET: 1 of 1	REVISION: C01	SUITABILITY: A3	



### Legend

- Proposed Scheme Extents
- +— Highland Mainline railway
- ↕ Layby Viewpoints
- No View
- Restricted View
- Intermittent View
- Open View
- Landform
- Screening
- Vistas

**SCALE 1:30000**

P03	S3	NOV 2017	FINAL REVISIONS	ST	JF
P02	S3	SEPT 2017	INTERNAL REVISIONS	ST	JF
P01	S3	JUN 2017	DRAFT FOR COMMENT	ST	JF
REV	SUIT	DATE	DESCRIPTION	BY	APP

**ch2m FAIRHURST**  
 CH2MHILL Fairhurst JV  
 CO: City Park 368 Alexandra Parade Glasgow G31 3AU  
 Tel +44 (0) 141 552 2000 Fax +44 (0) 141 552 2525

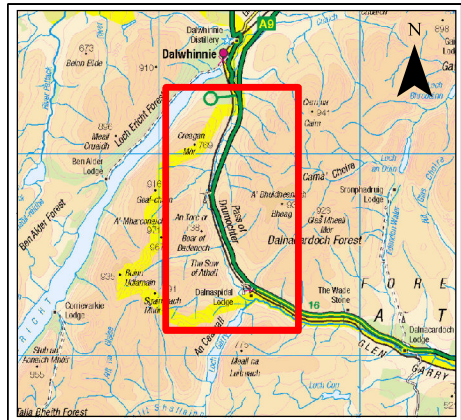
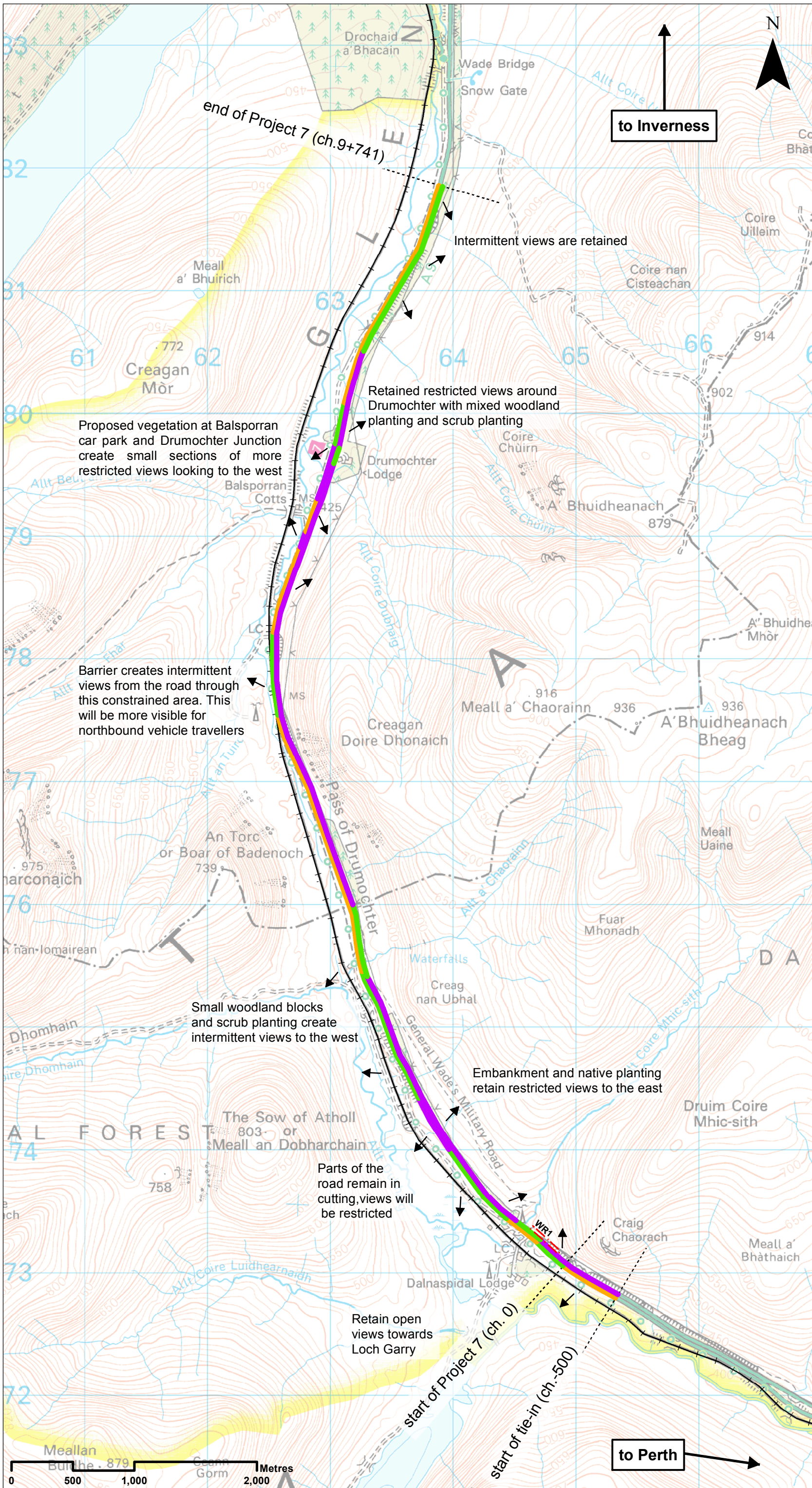


**PROJECT 7 GLEN GARRY TO DALWHINNIE EIA  
 BASELINE PLAN  
 DRAWING 9.2  
 ALL TRAVELLERS - VIEWS FROM THE ROAD**

DESIGN: LF	DRAWN: ST	CHK: SWG	APP: JF
---------------	--------------	-------------	------------

DATE: 24/11/2017	PROJ: 495298
DWG: A9P07-CF3-EGN-L_ZZZZZ_ZZ-DR-EN-0013	REVISION: C01
SHEET: 1 of 1	SUITABILITY: A3

Reproduced by permission of Ordnance Survey on behalf of HMSO. © Crown copyright and database right. All rights reserved. Transport Scotland Licence number 100046668, 2017



- ### Legend
- Proposed Scheme Extents
  - WR1 30m Winter Resilience Tree Belt (Indicative)
  - +— Highland Mainline railway
  - Restricted View
  - Intermittent View
  - Open View
  - Vistas

Proposed vegetation at Balsporran car park and Drumochter Junction create small sections of more restricted views looking to the west

Barrier creates intermittent views from the road through this constrained area. This will be more visible for northbound vehicle travellers

Small woodland blocks and scrub planting create intermittent views to the west

Embankment and native planting retain restricted views to the east

Parts of the road remain in cutting, views will be restricted

Retain open views towards Loch Garry

Intermittent views are retained

Retained restricted views around Drumochter with mixed woodland planting and scrub planting

Note:  
Views from the Road are representative of the Proposed Scheme at operation years 15-25, when vegetation has become established, and shows the long term residual views from the road.

SCALE 1:30000

REV	SUIT	DATE	DESCRIPTION	BY	APP
P03	S3	NOV 2017	FINAL REVISIONS	ST	JF
P02	S3	SEPT 2017	DESIGN UPDATE	ST	JF
P01	S3	JUN 2017	DRAFT FOR COMMENT	ST	JF

**ch2m** FAIRHURST

CH2MHILL Fairhurst JV  
CO: City Park 368 Alexandra Parade Glasgow G31 3AU  
Tel + 44 (0) 141 552 2000 Fax +44 (0) 141 552 2525



**PROJECT 7 GLEN GARRY TO DALWHINNIE EIA ASSESSMENT PLAN DRAWING 9.3 ALL TRAVELLERS - VIEWS FROM THE ROAD PROPOSED SCHEME**

DESIGN:	DRAWN:	CHK:	APP:
LF	ST	SWG	JF

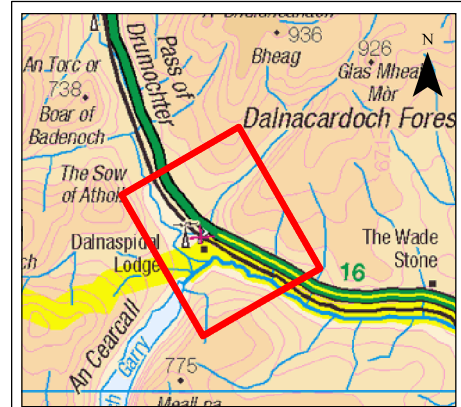
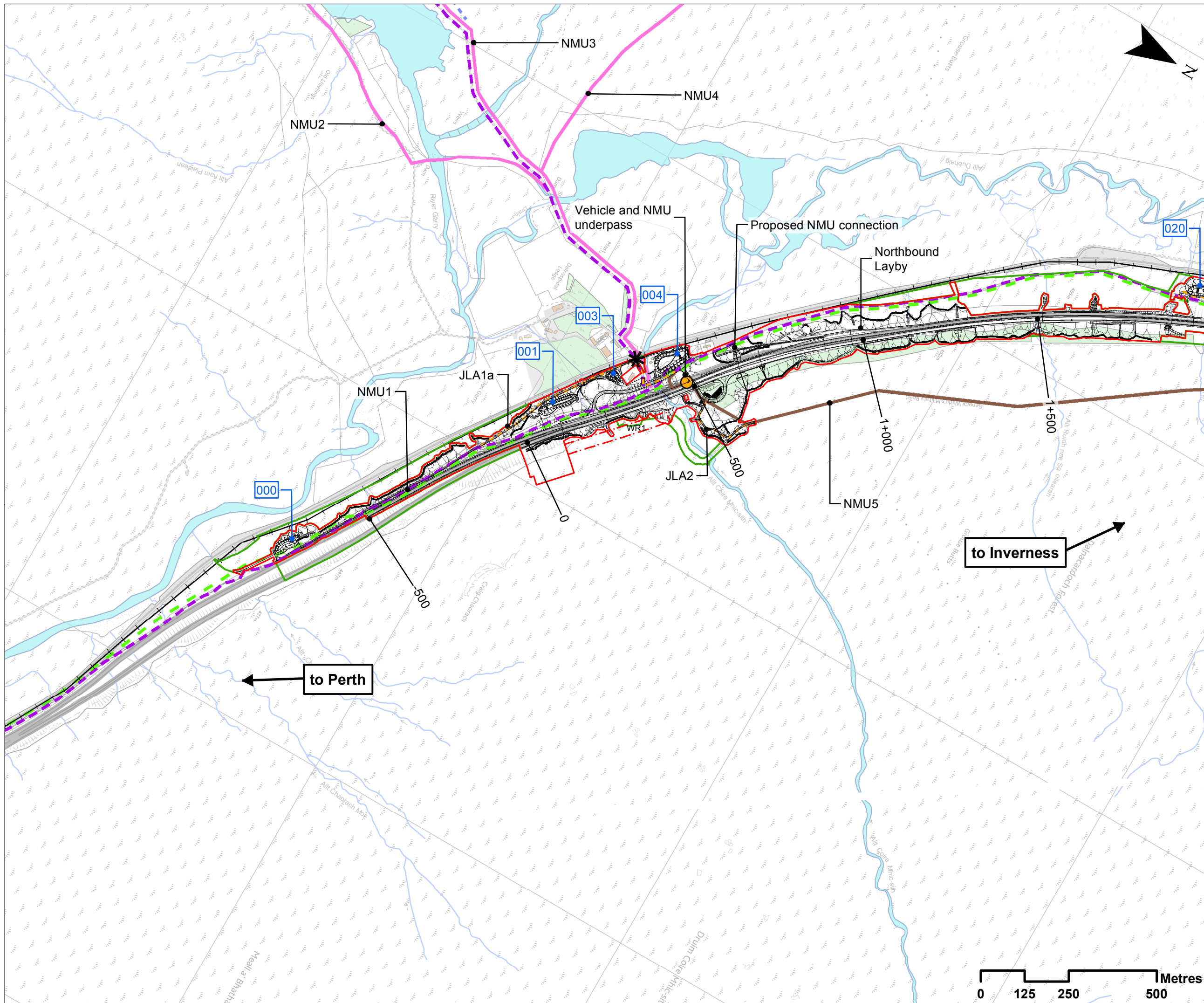
DATE: 01/12/2017

PROJ: 495298

DWG: A9P07-CF-J-EGN-L\_ZZZZZ\_ZZ-DR-EN-0014

SHEET:	REVISION:	SUITABILITY:
1 of 1	C01	A3

Reproduced by permission of Ordnance Survey on behalf of HMSO. © Crown copyright and database right. All rights reserved. Transport Scotland Licence number 100046668, 2017



### Legend

- Proposed Scheme Detail
- 000 SuDS ID
- Assessment Boundary - Permanent Works
- Assessment Boundary - Temporary Works
- WR1 30m Winter Resilience Tree Belt (Indicative)
- +— Highland Mainline railway
- +— Proposed New Journey Length
- Proposed Crossing Point (CP)
- \* Parking Areas
- NMU Routes**
- NCN7 (Off Road)
- CNPA Core Path
- Hill Walking Routes
- Informal Routes
- PKC Core Path

Note:  
JLA refers to Journey Length Assessment and should be read in conjunction with Table 9-15 of Chapter 9.

SCALE 1:10000

REV	NO	DATE	DESCRIPTION	BY	APP
P03	S3	NOV 2017	FINAL REVISIONS	ST	JF
P02	S3	SEPT 2017	DESIGN UPDATE	ST	JF
P01	S3	JUN 2017	DRAFT FOR COMMENT	ST	JF

**ch2m. FAIRHURST**

CH2MHILL Fairhurst JV  
C/O: City Park 368 Alexandra Parade Glasgow G31 3AU  
Tel + 44 (0) 141 552 2000 Fax +44 (0) 141 552 2525



**PROJECT 7 GLEN GARRY TO DALWHINNIE EIA  
ASSESSMENT PLAN  
DRAWING 9.4  
ALL TRAVELLERS - NMUs  
chainage -500 to 1800**

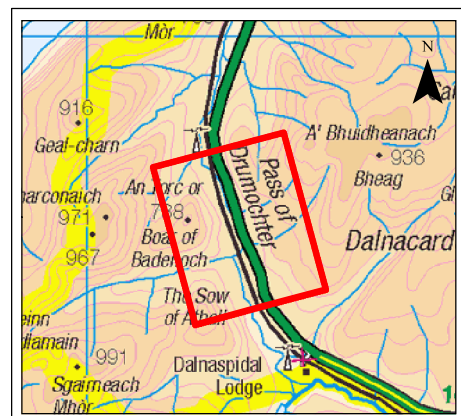
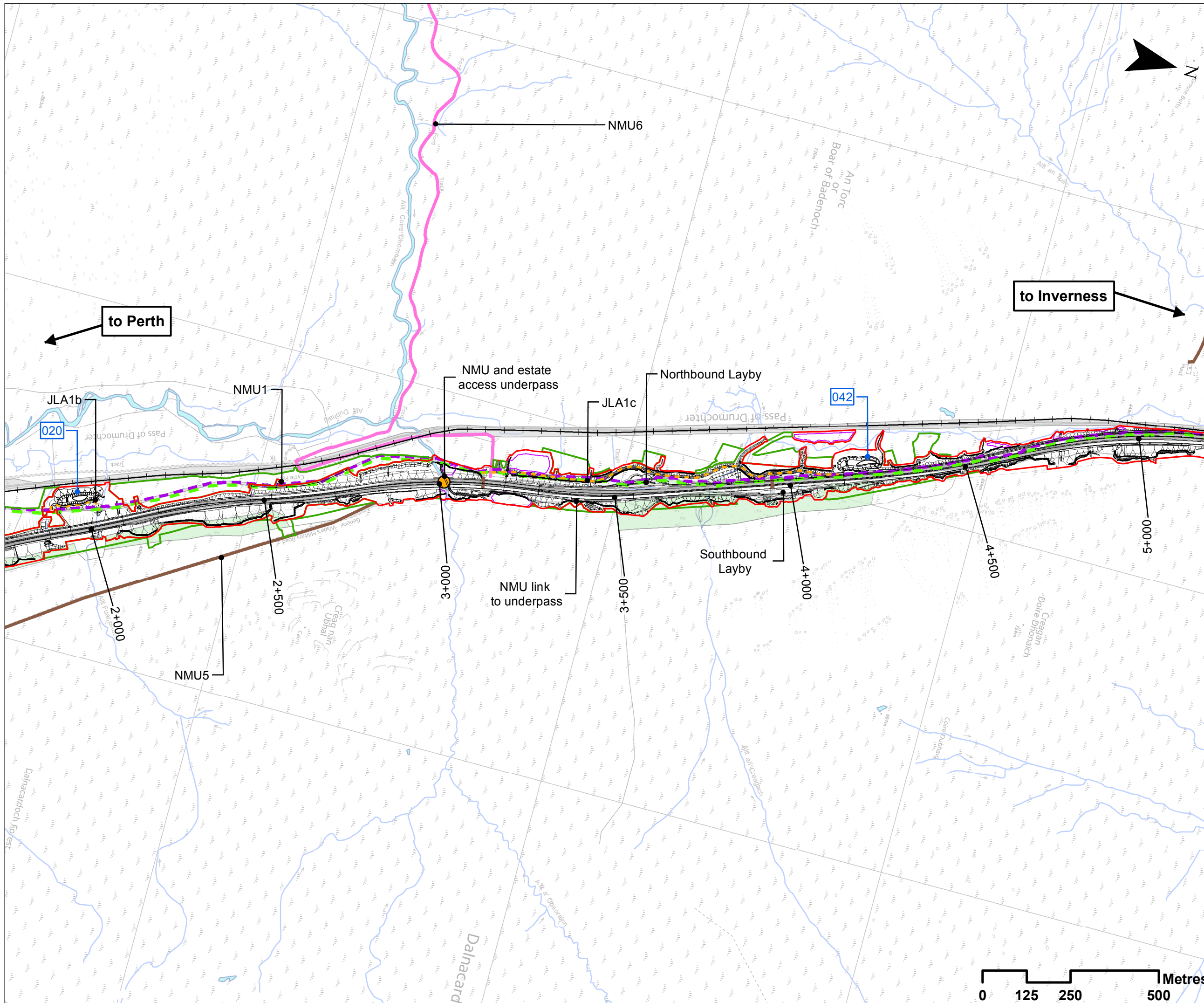
DESIGN: LF	DRAWN: ST	CHK: SWG	APP: JF
---------------	--------------	-------------	------------

DATE: 01/12/2017

PROJ: 495298

DWG: A9P07-CFJ-EGN-L\_ML000\_ZZ-DR-EN-0004

SHEET: 1 OF 4	REVISION: C01	SUITABILITY: A3
------------------	------------------	--------------------



### Legend

- Proposed Scheme Detail
- ▭ Compensatory Storage Areas
- 000 SuDS ID
- ▭ Assessment Boundary - Permanent Works
- ▭ Assessment Boundary - Temporary Works
- Highland Mainline railway
- Proposed New Journey Length
- Proposed Crossing Point (CP)
- NMU Routes**
- NCN7 (Off Road)
- CNPA Core Path
- Hill Walking Routes
- Informal Routes

Note:  
JLA refers to Journey Length Assessment and should be read in conjunction with Table 9-15 of Chapter 9.

SCALE 1:10000

REV	SUI	DATE	DESCRIPTION	BY	APP
P03	S3	NOV 2017	FINAL REVISIONS	ST	JF
P02	S3	SEPT 2017	DESIGN UPDATE	ST	JF
P01	S3	JUN 2017	DRAFT FOR COMMENT	ST	JF

**ch2m FAIRHURST**  
 CH2MHILL Fairhurst JV  
 C/O: City Park 368 Alexandra Parade Glasgow G31 3AU  
 Tel +44 (0) 141 552 2000 Fax +44 (0) 141 552 2525



**PROJECT 7 GLEN GARRY TO DALWHINNIE EIA**  
**ASSESSMENT PLAN**  
**DRAWING 9.5**  
**ALL TRAVELLERS - NMUs**  
**chainage 1800 to 5000**

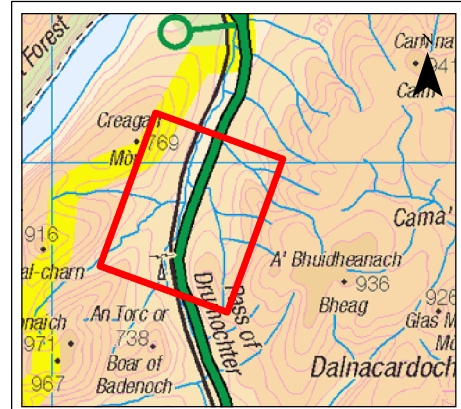
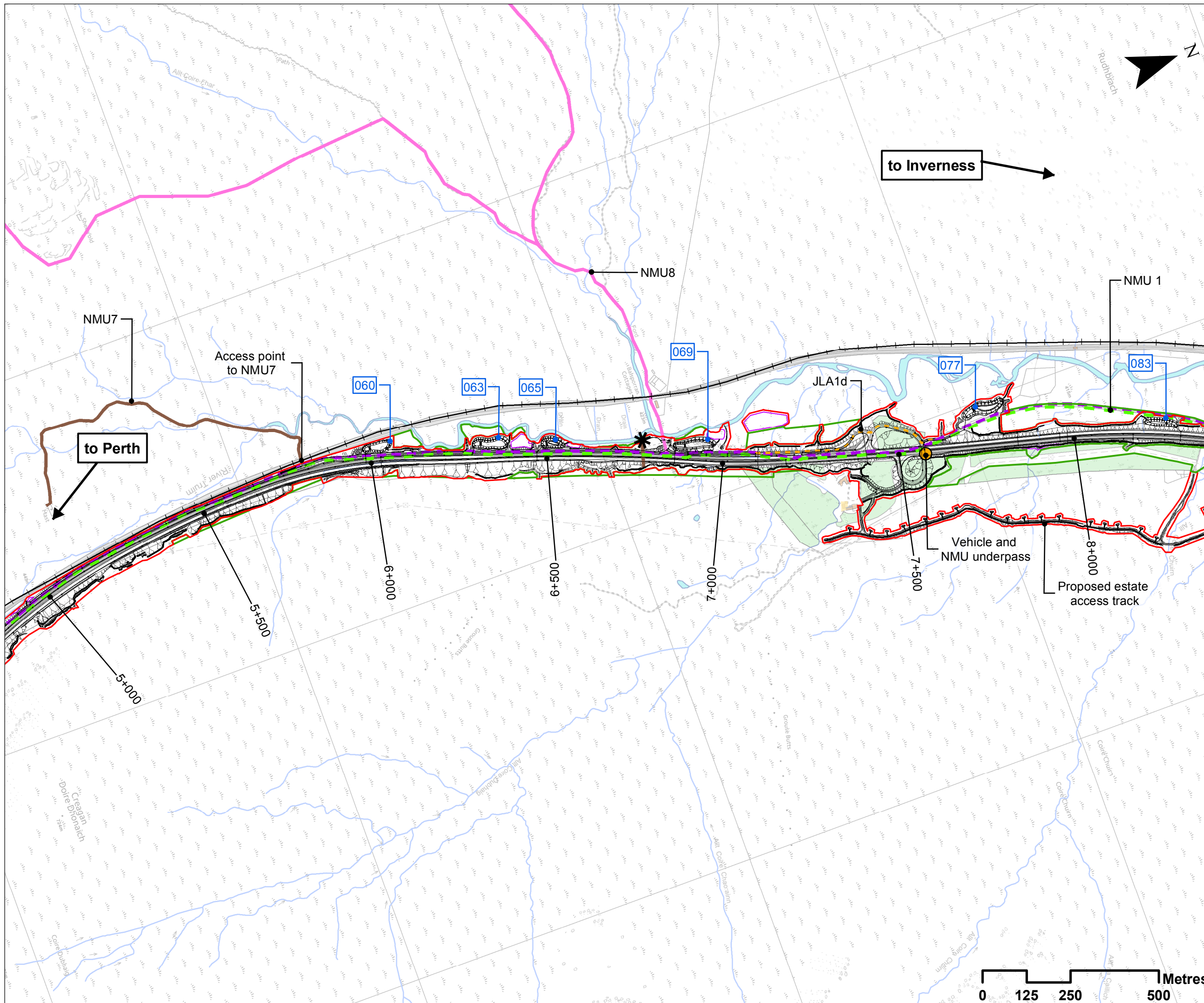
DESIGN: LF	DRAWN: ST	CHK: SWG	APP: JF
---------------	--------------	-------------	------------

DATE: 01/12/2017  
 PROJ: 495298

DWG: A9P07-CFJ-EGN-L\_ML018\_ZZ-DR-EN-0005

SHEET: 2 OF 4	REVISION: C01	SUITABILITY: A3
------------------	------------------	--------------------

Document Path: J:\9161615\Stage\_3\07\Chapter\_9\_A9\_Dualling\9\_A9\_Travellers\_P07\_Figure\_9.5\_A9P07-CFJ-EGN-L\_ML018\_ZZ-DR-EN-0005.mxd



**Legend**

- Proposed Scheme Detail
- Compensatory Storage Areas
- SuDS ID
- Assessment Boundary - Permanent Works
- Assessment Boundary - Temporary Works
- +— Highland Mainline railway
- - - Proposed New Journey Length
- Proposed Crossing Point (CP)
- \* Parking Areas
- NMU Routes**
- NCN7 (Off Road)
- CNPA Core Path
- Hill Walking Routes
- Informal Routes

Note:  
JLA refers to Journey Length Assessment and should be read in conjunction with Table 9-15 of Chapter 9.

SCALE 1:10000

P03	S3	NOV 2017	FINAL REVISIONS	ST	JF
P02	S3	SEPT 2017	DESIGN UPDATE	ST	JF
P01	S3	JUN 2017	DRAFT FOR COMMENT	ST	JF
REV	SUI	DATE	DESCRIPTION	BY	APP

**ch2m: FAIRHURST**  
CH2MHILL Fairhurst JV  
C/O: City Park 368 Alexandra Parade Glasgow G31 3AU  
Tel + 44 (0) 141 552 2000 Fax +44 (0) 141 552 2525



**PROJECT 7 GLEN GARRY TO DALWHINNIE EIA  
ASSESSMENT PLAN  
DRAWING 9.6  
ALL TRAVELLERS - NMUs  
chainage 5000 to 8200**

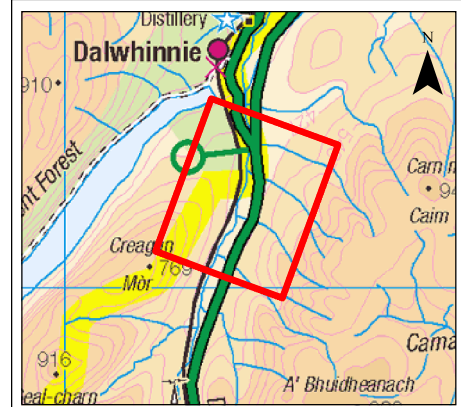
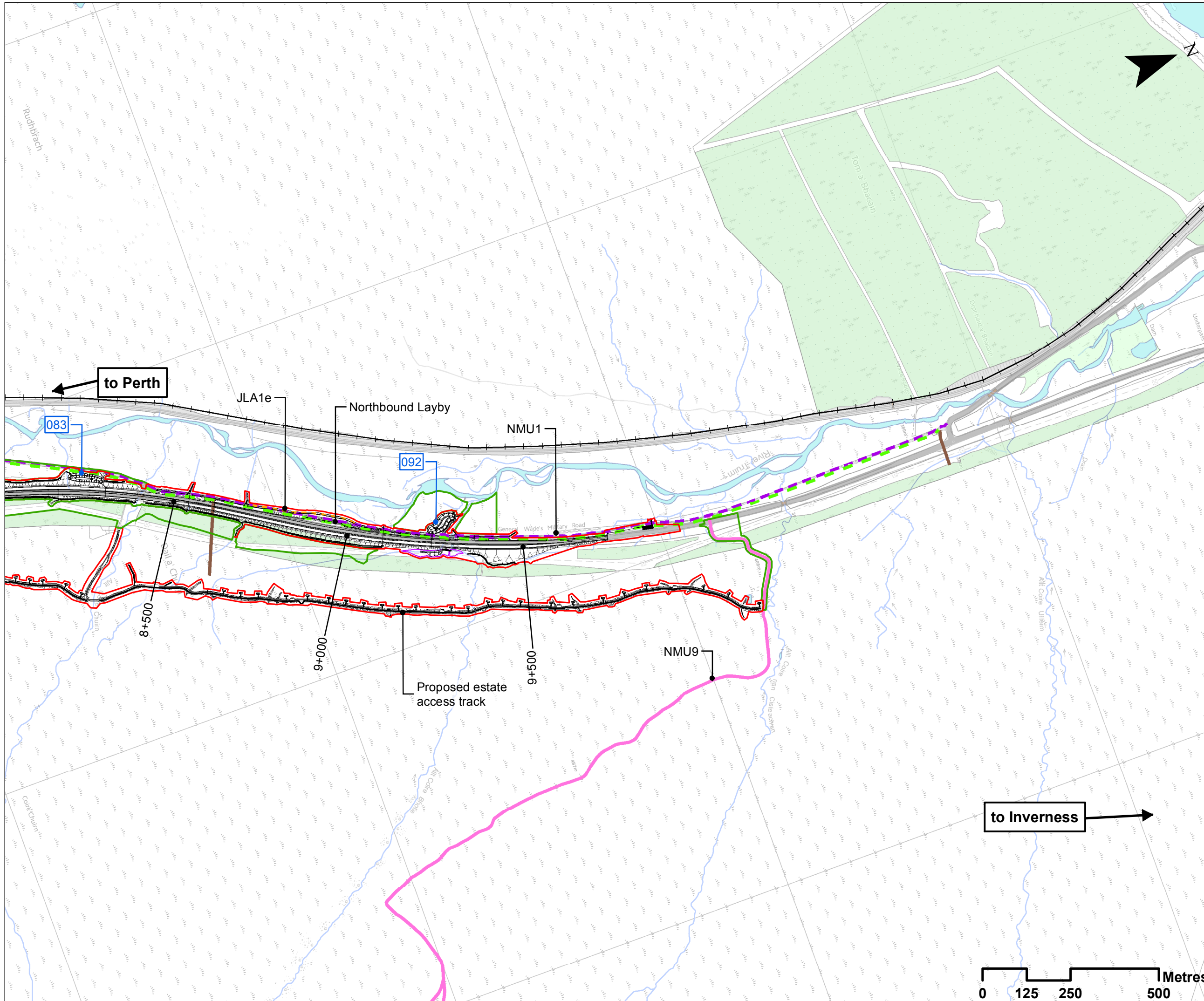
DESIGN: LF	DRAWN: ST	CHK: SWG	APP: JF
---------------	--------------	-------------	------------

DATE: 01/12/2017  
PROJ: 495298

DWG: A9P07-CFJ-EGN-L\_ML050\_ZZ-DR-EN-0003

SHEET: 3 OF 4	REVISION: C01	SUITABILITY: A3
------------------	------------------	--------------------

Document Path: J:\91616161\stage\_3\91616161\Chapter\_9\_A11\_Travellers\_P07\_Figure\_9.6\_A9P07-CFJ-EGN-L\_ML050\_ZZ-DR-EN-0003.mxd



- Legend**
- Proposed Scheme Detail
  - Compensatory Storage Areas
  - 000 SuDS ID
  - Assessment Boundary - Permanent Works
  - Assessment Boundary - Temporary Works
  - + Highland Mainline railway
  - - - Proposed New Journey Length
  - NMU Routes
    - NCN7 (Off Road)
    - CNPA Core Path
    - Hill Walking Routes
    - Informal Routes

Note:  
 JLA refers to Journey Length Assessment and should be read in conjunction with Table 9-15 of Chapter 9.  
**SCALE 1:10000**

REV	SUI	DATE	DESCRIPTION	BY	APP
P03	S3	NOV 2017	FINAL REVISIONS	ST	JF
P02	S3	SEPT 2017	DESIGN UPDATE	ST	JF
P01	S3	JUN 2017	DRAFT FOR COMMENT	ST	JF

**ch2m FAIRHURST**  
 CH2MHILL Fairhurst JV  
 C/O: City Park 368 Alexandra Parade Glasgow G31 3AU  
 Tel + 44 (0) 141 552 2000 Fax +44 (0) 141 552 2525



**PROJECT 7 GLEN GARRY TO DALWHINNIE EIA  
 ASSESSMENT PLAN  
 DRAWING 9.7  
 ALL TRAVELLERS - NMUs  
 chainage 8200 to 9741**

DESIGN: LF	DRAWN: ST	CHK: SWG	APP: JF
---------------	--------------	-------------	------------

DATE: 01/12/2017  
 PROJ: 495298

DWG: A9P07-CFJ-EGN-L ML082 ZZ-DR-EN-0003

SHEET: 4 OF 4	REVISION: C01	SUITABILITY: A3
------------------	------------------	--------------------

