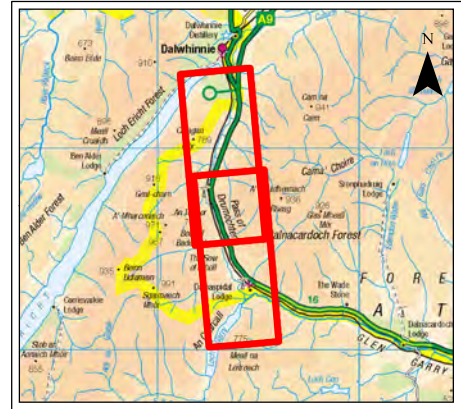
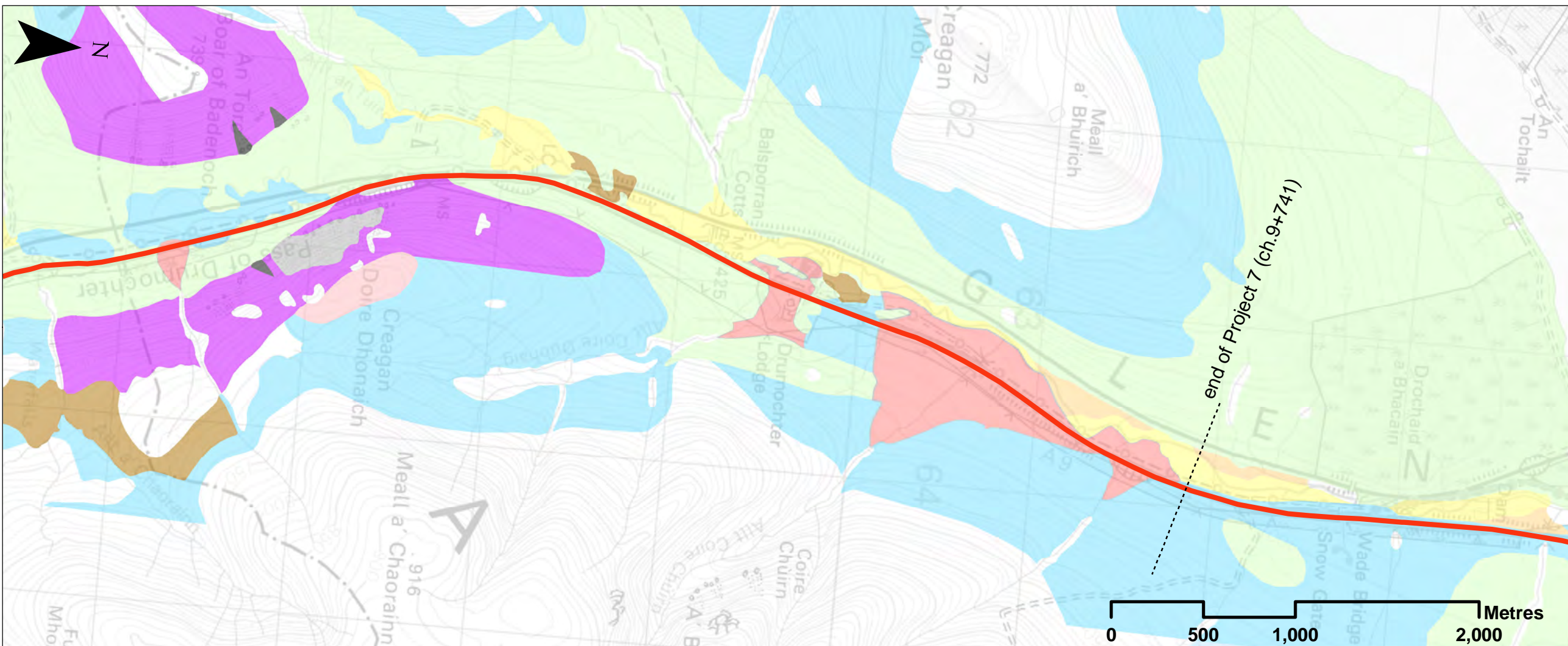
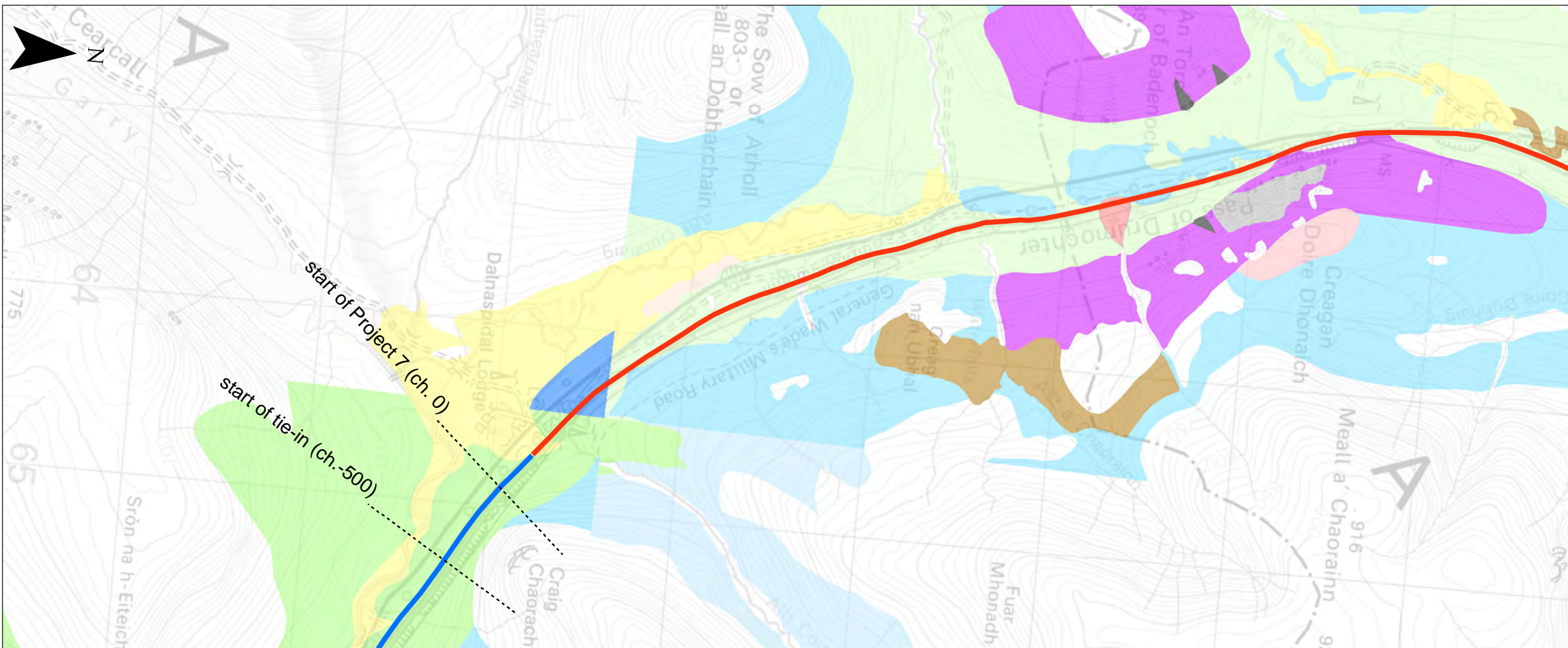


## Geology, Soils and Groundwater

Drawing No.	Drawing Type	Drawing Title	Projectwise Drawing Reference	Software
10.1	BASELINE PLAN	SUPERFICIAL GEOLOGY	A9P07-CFJ-EGT-L_ZZZZZ_ZZ-DR-EN-0001	GIS
10.2	BASELINE PLAN	SOLID GEOLOGY	A9P07-CFJ-EGT-L_ZZZZZ_ZZ-DR-EN-0002	GIS
10.3	BASELINE PLAN	DESIGNATED AND NON-DESIGNATED GEOLOGICAL / GEODIVERSITY FEATURES	A9P07-CFJ-EGT-L_ZZZZZ_ZZ-DR-EN-0003	GIS
10.4	BASELINE PLAN	NATIONAL SOIL MAP OF SCOTLAND (SOIL GROUPS)	A9P07-CFJ-EGT-L_ZZZZZ_ZZ-DR-EN-0004	GIS
10.5	BASELINE PLAN	NATIONAL SOIL MAP OF SCOTLAND (SOIL SUBGROUPS)	A9P07-CFJ-EGT-L_ZZZZZ_ZZ-DR-EN-0005	GIS
10.6	BASELINE PLAN	SNH CARBON AND PEATLAND MAP	A9P07-CFJ-EGT-L_ZZZZZ_ZZ-DR-EN-0006	GIS
10.7	BASELINE PLAN	SUPERFICIAL AQUIFER PRODUCTIVITY	A9P07-CFJ-EGT-L_ZZZZZ_ZZ-DR-EN-0007	GIS
10.8	BASELINE PLAN	BEDROCK AQUIFER PRODUCTIVITY	A9P07-CFJ-EGT-L_ZZZZZ_ZZ-DR-EN-0008	GIS
10.9	BASELINE PLAN	GROUNDWATER VULNERABILITY	A9P07-CFJ-EGT-L_ZZZZZ_ZZ-DR-EN-0009	GIS
10.10	ASSESSMENT PLAN	DESIGNATED AND NON-DESIGNATED GEOLOGICAL / GEODIVERSITY FEATURES ch. -500 to 600	A9P07-CFJ-EGT-L_ML000_ZZ-DR-EN-0001	GIS
10.11	ASSESSMENT PLAN	DESIGNATED AND NON-DESIGNATED GEOLOGICAL / GEODIVERSITY FEATURES ch. 600 to 2200	A9P07-CFJ-EGT-L_ML006_ZZ-DR-EN-0001	GIS
10.12	ASSESSMENT PLAN	DESIGNATED AND NON-DESIGNATED GEOLOGICAL / GEODIVERSITY FEATURES ch. 2200 to 3800	A9P07-CFJ-EGT-L_ML022_ZZ-DR-EN-0001	GIS
10.13	ASSESSMENT PLAN	DESIGNATED AND NON-DESIGNATED GEOLOGICAL / GEODIVERSITY FEATURES ch. 3800 to 5400	A9P07-CFJ-EGT-L_ML038_ZZ-DR-EN-0001	GIS
10.14	ASSESSMENT PLAN	DESIGNATED AND NON-DESIGNATED GEOLOGICAL / GEODIVERSITY FEATURES ch. 5400 to 7000	A9P07-CFJ-EGT-L_ML054_ZZ-DR-EN-0001	GIS
10.15	ASSESSMENT PLAN	DESIGNATED AND NON-DESIGNATED GEOLOGICAL / GEODIVERSITY FEATURES ch. 7000 to 8600	A9P07-CFJ-EGT-L_ML070_ZZ-DR-EN-0001	GIS
10.16	ASSESSMENT PLAN	DESIGNATED AND NON-DESIGNATED GEOLOGICAL / GEODIVERSITY FEATURES ch. 8600 to 9741	A9P07-CFJ-EGT-L_ML086_ZZ-DR-EN-0001	GIS
10.17	ASSESSMENT PLAN	PEAT SURVEY RESULTS ch. -500 to 600	A9P07-CFJ-EGT-L_ML000_ZZ-DR-EN-0002	GIS
10.18	ASSESSMENT PLAN	PEAT SURVEY RESULTS ch. 600 to 2200	A9P07-CFJ-EGT-L_ML006_ZZ-DR-EN-0002	GIS
10.19	ASSESSMENT PLAN	PEAT SURVEY RESULTS ch. 2200 to 3800	A9P07-CFJ-EGT-L_ML022_ZZ-DR-EN-0002	GIS
10.20	ASSESSMENT PLAN	PEAT SURVEY RESULTS ch. 3800 to 5400	A9P07-CFJ-EGT-L_ML038_ZZ-DR-EN-0002	GIS
10.21	ASSESSMENT PLAN	PEAT SURVEY RESULTS ch. 5400 to 7000	A9P07-CFJ-EGT-L_ML054_ZZ-DR-EN-0002	GIS
10.22	ASSESSMENT PLAN	PEAT SURVEY RESULTS ch. 7000 to 8600	A9P07-CFJ-EGT-L_ML070_ZZ-DR-EN-0002	GIS
10.23	ASSESSMENT PLAN	PEAT SURVEY RESULTS ch. 8600 to 9741	A9P07-CFJ-EGT-L_ML086_ZZ-DR-EN-0002	GIS
10.24	ASSESSMENT PLAN	GROUNDWATER ABSTRACTIONS, PRIVATE WATER SUPPLIES AND GWDTE ch. -500 to 600	A9P07-CFJ-EGT-L_ML000_ZZ-DR-EN-0003	GIS
10.25	ASSESSMENT PLAN	GROUNDWATER ABSTRACTIONS, PRIVATE WATER SUPPLIES AND GWDTE ch. 600 to 2200	A9P07-CFJ-EGT-L_ML006_ZZ-DR-EN-0003	GIS
10.26	ASSESSMENT PLAN	GROUNDWATER ABSTRACTIONS, PRIVATE WATER SUPPLIES AND GWDTE ch. 2200 to 3800	A9P07-CFJ-EGT-L_ML022_ZZ-DR-EN-0003	GIS





- Legend**
- Proposed Scheme Extents
  - Existing Dualled
  - Existing Single
- Superficial Geology:**
- Alluvial Fan Deposits- Gravel, Sand, Silt and Clay
  - Alluvium- Clay, Silt, Sand and Gravel
  - Alluvium- Sand, Gravel and Boulders
  - Ardverkie Till Formation- Diamicton
  - Blanket Head - Rock Fragments, Angular, Undifferentiated Source Rock
  - Glaciofluvial Ice Contact Deposits- Gravel, Sand and Silt
  - Glaciofluvial Sheet Deposits- Sand, Gravel and Boulders
  - Head- Gravel, Sand, Silt and Clay
  - Hummocky (Moundy) Glacial Deposits- Diamicton, Gravel, Sand and Silt
  - Hummocky (Moundy) Glacial Deposits- Gravel, Sand and Silt
  - Hummocky (Moundy) Glacial Deposits- Sand, Gravel and Boulders
  - Peat
  - River Terrace Deposits (Undifferentiated)- Gravel, Sand, Silt and Clay
  - River Terrace Deposits (Undifferentiated)- Sand and Gravel
  - Talus - Rock Fragments, Angular, Undifferentiated Source Rock
  - Talus Cone - Sand, Clay and Boulders
  - Till and Morainic Deposits (Undifferentiated) - Diamicton, Sand and Gravel
  - Till, Devensian- Diamicton

SCALE 1:25000

P02	S3	NOV 17	FINAL REVISIONS	HA	JF
P01	S3	JUN 17	DRAFT FOR COMMENT	HA	JF
REV	SUIT	DATE	DESCRIPTION	BY	APP

**ch2m FAIRHURST**  
 CH2MHILL Fairhurst JV  
 C/O: City Park 368 Alexandra Parade Glasgow G31 3AU  
 Tel +44 (0) 141 552 2000 Fax +44 (0) 141 552 2525



**PROJECT 7 GLEN GARRY TO DALWHINNIE EIA  
 BASELINE PLAN  
 DRAWING 10.1  
 SUPERFICIAL GEOLOGY**

DESIGN:	DRAWN:	CHK:	APP:
CK	HA	CK	JF

DATE: 19/10/2017  
 PROJ: 495298

DWG: A9P07-CFJ-EGT-L\_ZZZZZ\_ZZ-DR-EN-0001

SHEET:	REVISION:	SUITABILITY:
1 of 1	C01	A3

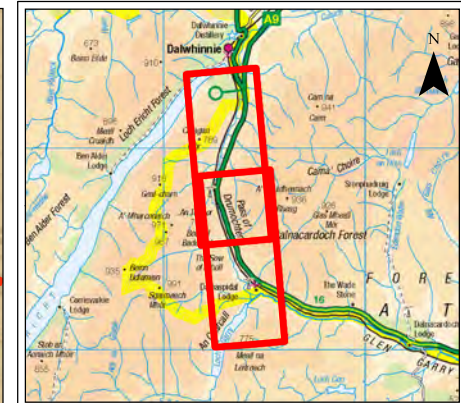
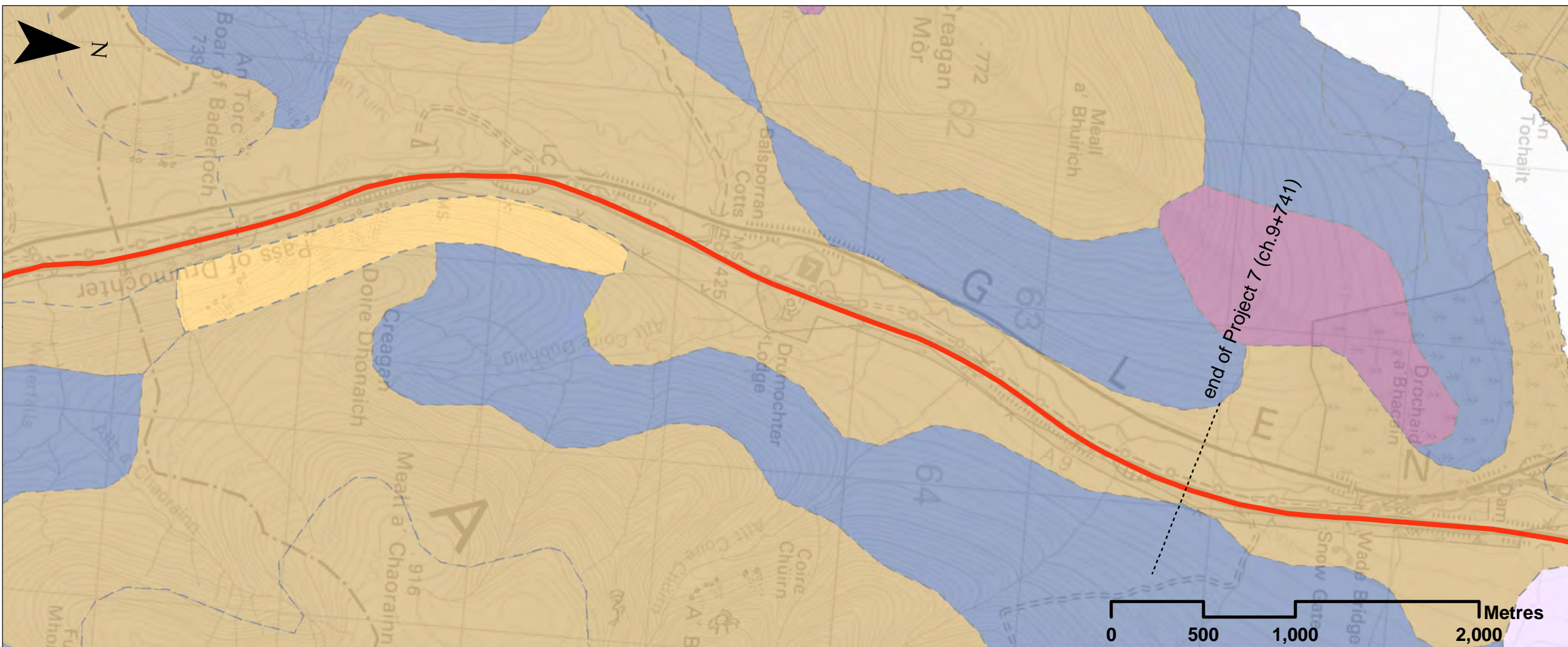
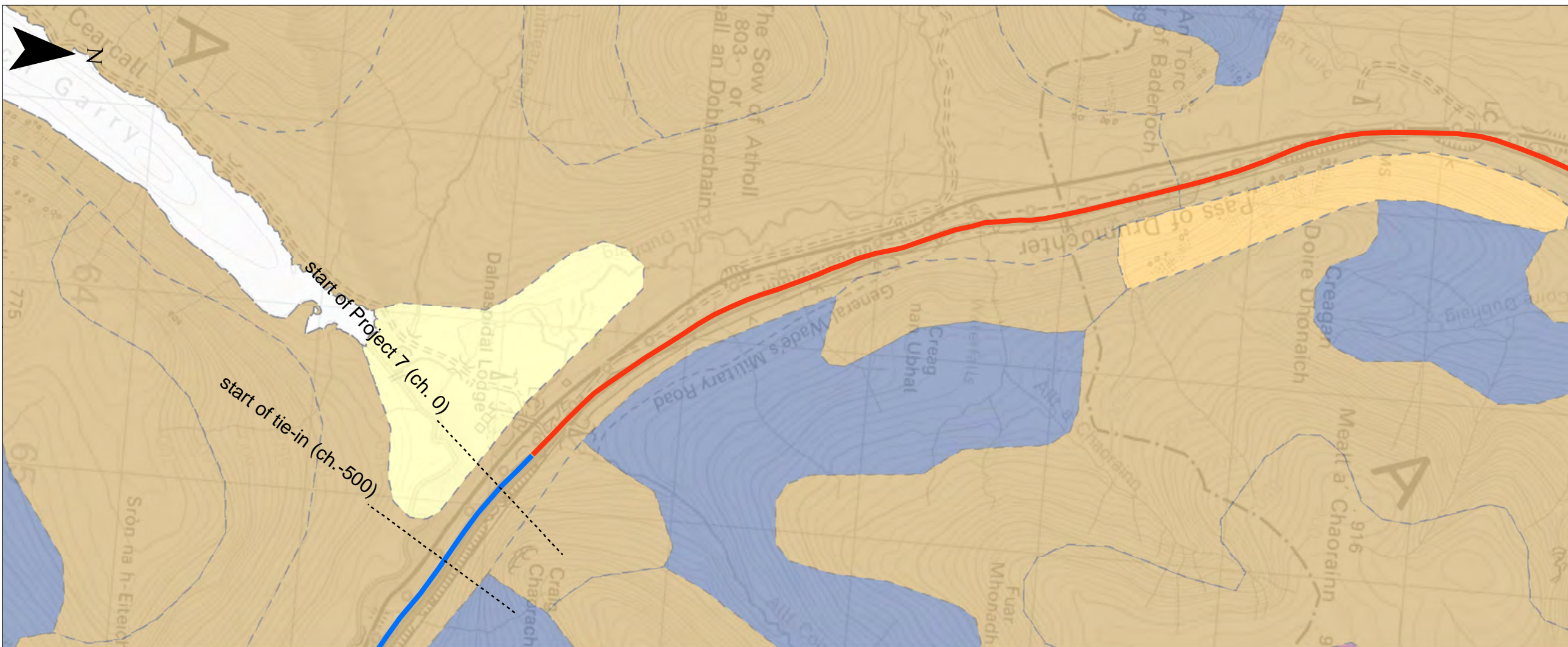












- Legend**
- Proposed Scheme Extents
  - Existing Dualled
  - Existing Single
- Soil Group:**
- Not Classified
  - Alluvial Soils
  - Peat
  - Blanket Peats
  - Brown Earths
  - Calcareous soils
  - Gleys Soils
  - Lithosols
  - Magnesian soils
  - Podzols
  - Rankers
  - Regosols
  - Rendzinas
  - Semi-confined peats

SCALE 1:25000

P03	S3	NOV 17	FINAL REVISIONS	HA	JF
P02	S3	SEPT 17	DESIGN UPDATE	HA	JF
P01	S3	JUN 17	DRAFT FOR COMMENT	HA	JF
REV	SUIT	DATE	DESCRIPTION	BY	APP

**ch2m FAIRHURST**

CH2MHILL Fairhurst JV  
 C/O: City Park 368 Alexandra Parade Glasgow G31 3AU  
 Tel + 44 (0) 141 552 2000 Fax +44 (0) 141 552 2525



**PROJECT 7 GLEN GARRY TO DALWHINNIE EIA  
 BASELINE PLAN  
 DRAWING 10.4  
 NATIONAL SOIL MAP OF SCOTLAND  
 (SOIL GROUPS)**

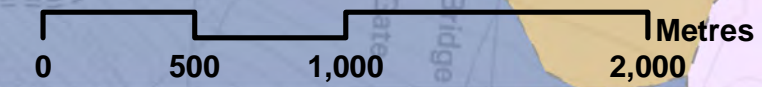
DESIGN: CK	DRAWN: HA	CHK: CK	APP: JF
---------------	--------------	------------	------------

DATE: 20/10/2017

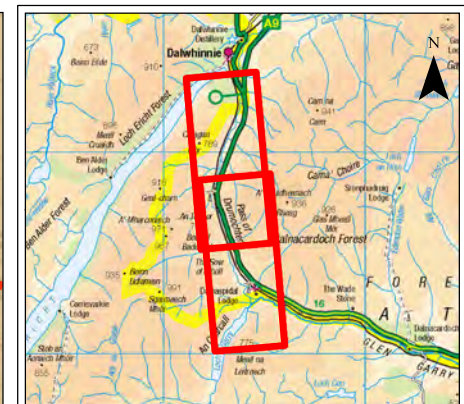
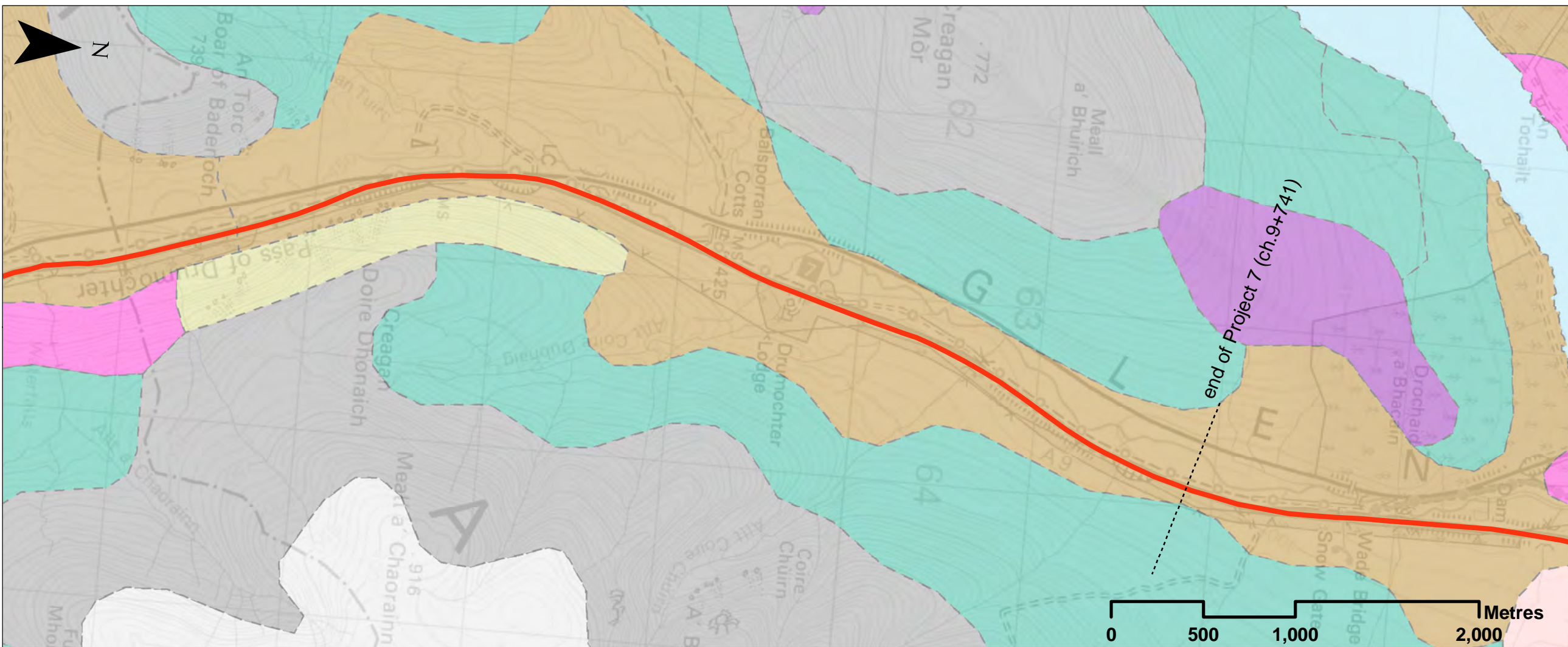
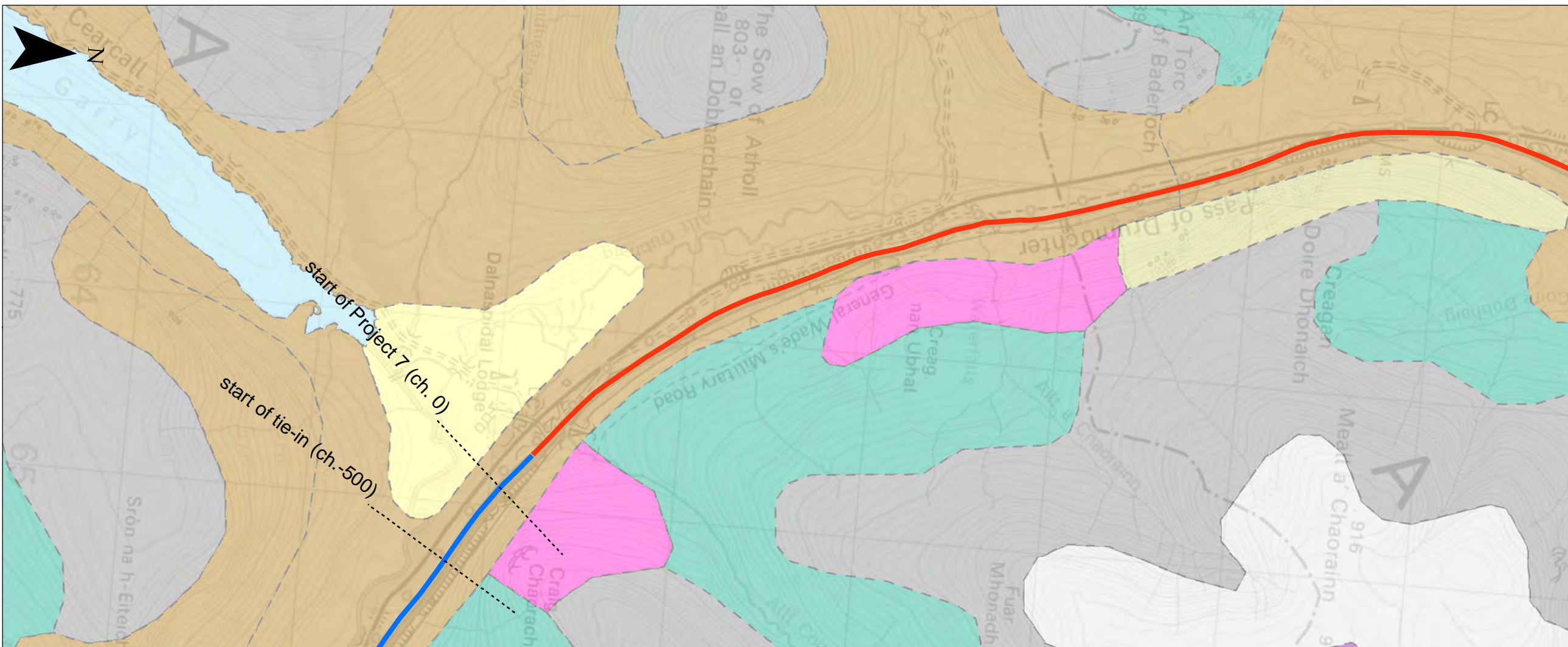
PROJ: 495298

DWG: A9P07-CFJ-EGT-L\_ZZZZZ\_ZZ-DR-EN-0004

SHEET: 1 of 1	REVISION: C01	SUITABILITY: A3
------------------	------------------	--------------------







### Legend

- Proposed Scheme Extents
- Existing Dualled
- Existing Single

### Soil Subgroup:

- Lochs
- Alpine Podzols
- Dystrophic Basin Peat
- Dystrophic Blanket Peat
- Humus-Iron Podzols
- Mineral Alluvial Soils
- Peaty Gleyed Podzols
- Peaty Gleys
- Peaty Rankers
- Subalpine Podzols

SCALE 1:25000

P03	S3	NOV 17	FINAL REVISIONS	HA	JF
P02	S3	SEPT 17	DESIGN UPDATE	HA	JF
P01	S3	JUN 17	DRAFT FOR COMMENT	HA	JF
REV	SUI	DATE	DESCRIPTION	BY	APP

**ch2m FAIRHURST**

CH2MHILL Fairhurst JV  
C/O: City Park 368 Alexandra Parade Glasgow G31 3AU  
Tel + 44 (0) 141 552 2000 Fax +44 (0) 141 552 2525



**PROJECT 7 GLEN GARRY TO DALWHINNIE EIA  
BASELINE PLAN  
DRAWING 10.5  
NATIONAL SOIL MAP OF SCOTLAND  
(SOIL SUBGROUPS)**

DESIGN: CK	DRAWN: HA	CHK: CK	APP: JF
---------------	--------------	------------	------------

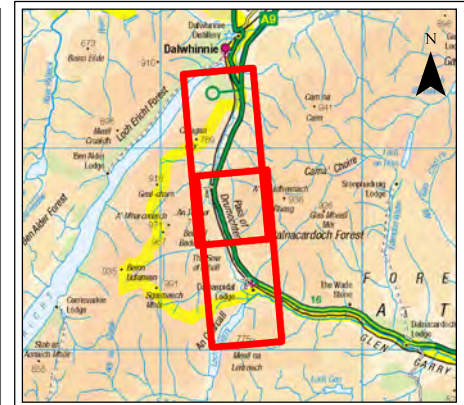
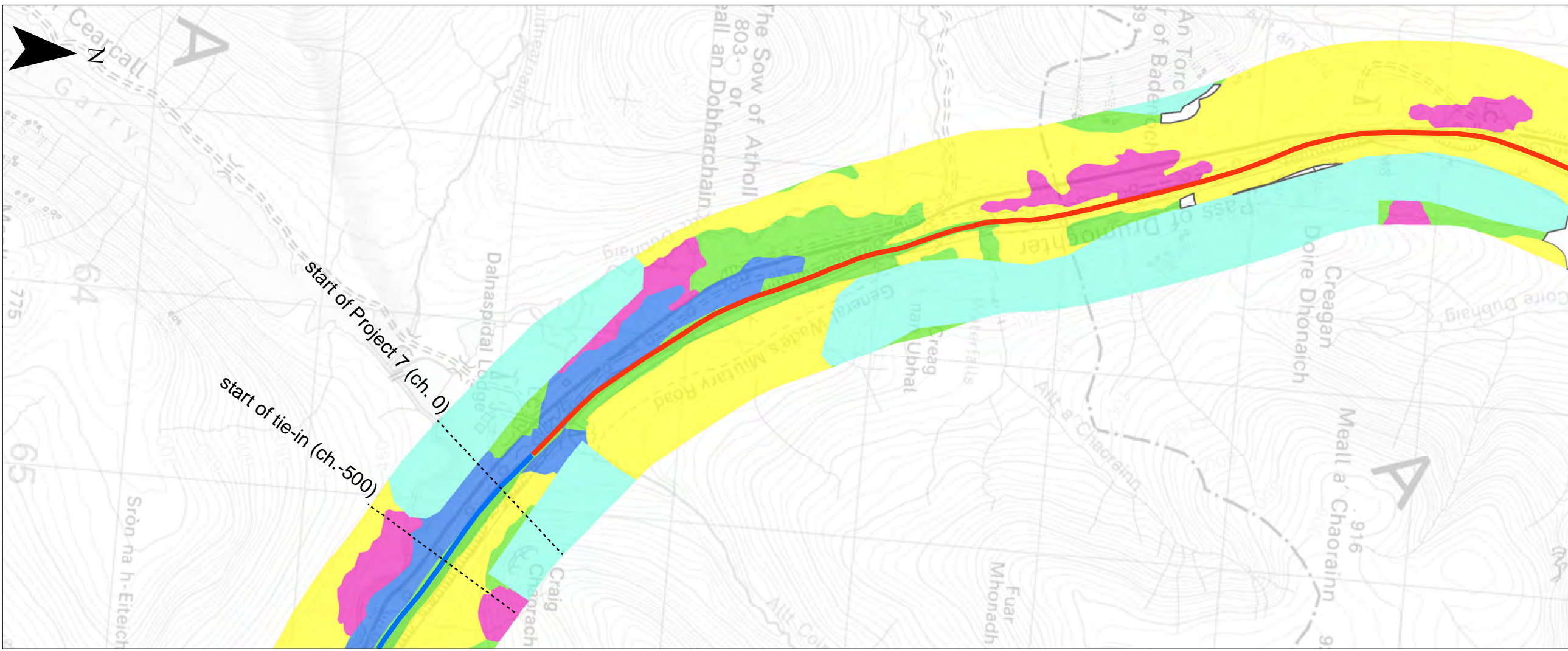
DATE: 20/10/2017

PROJ: 495298

DWG: A9P07-CFJ-EGT-L\_ZZZZZ\_ZZ-DR-EN-0005

SHEET: 1 of 1	REVISION: C01	SUITABILITY: A3
------------------	------------------	--------------------





**Legend**

----- Proposed Scheme Extents

█ Existing Dualled

█ Existing Single

**Priority Peatland Class:**

█ -2 Non-soil (i.e. loch, built up area, rock and scree)

█ -1 Unknown soil type

█ 0 Mineral soils, Peatland habitats are not typically found on such soils.

█ 1 All vegetation cover is priority peatland habitats + All soils are carbon-rich soils and deep peat

█ 2 The vegetation cover is dominated by priority peatland habitats + All soils are carbon-rich soil and deep peat

█ 3 Dominant vegetation cover is not priority peatland habitat but is associated with wet and acidic type. Occasional peatland habitats can be found + Most soils are carbon-rich soils, with some areas of deep peat

█ 4 Area unlikely to be associated with peatland habitats or wet and acidic type + Area unlikely to include carbon-rich soils

█ 5 Soil information takes precedence over vegetation data + No peatland habitat recorded. May also show bare soil. + All soils are carbon-rich soil and deep peat

SCALE 1:25000

P02	S3	NOV 17	FINAL REVISIONS	HA	JF
P01	S3	JUN 17	DRAFT FOR COMMENT	HA	JF
REV	SUIT	DATE	DESCRIPTION	BY	APP

**ch2m FAIRHURST**

CH2MHILL Fairhurst JV  
C/O: City Park 368 Alexandra Parade Glasgow G31 3AU  
Tel + 44 (0) 141 552 2000 Fax +44 (0) 141 552 2525



**PROJECT 7 GLEN GARRY TO DALWHINNIE EIA  
BASELINE PLAN  
DRAWING 10.6  
SNH CARBON AND PEATLAND MAP**

DESIGN:	DRAWN:	CHK:	APP:
CK	HA	CK	JF

DATE: 20/10/2017

PROJ: 495298

DWG: A9P07-CFJ-EGT-L\_ZZZZZ\_ZZ-DR-EN-0006

SHEET:	REVISION:	SUITABILITY:
1 of 1	C01	A3

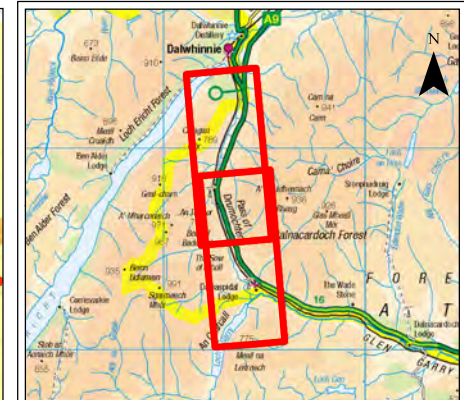
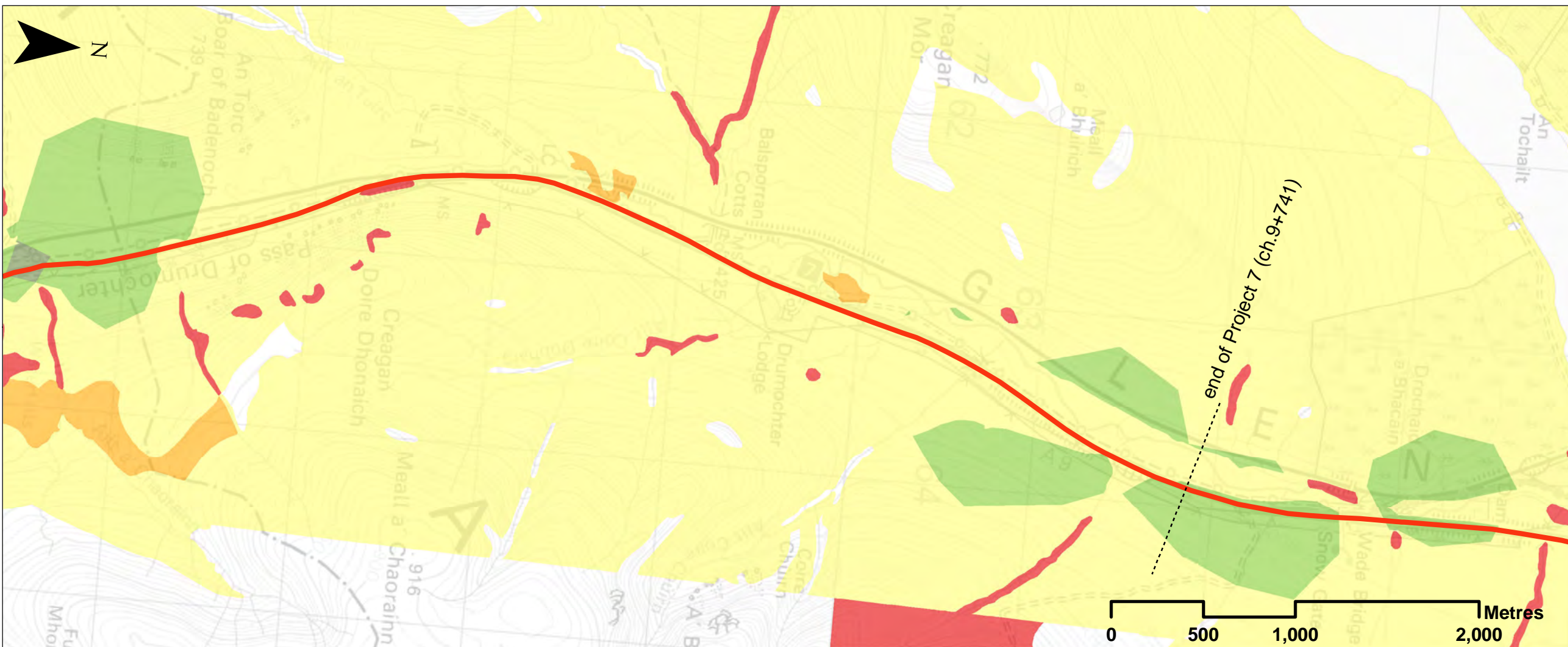
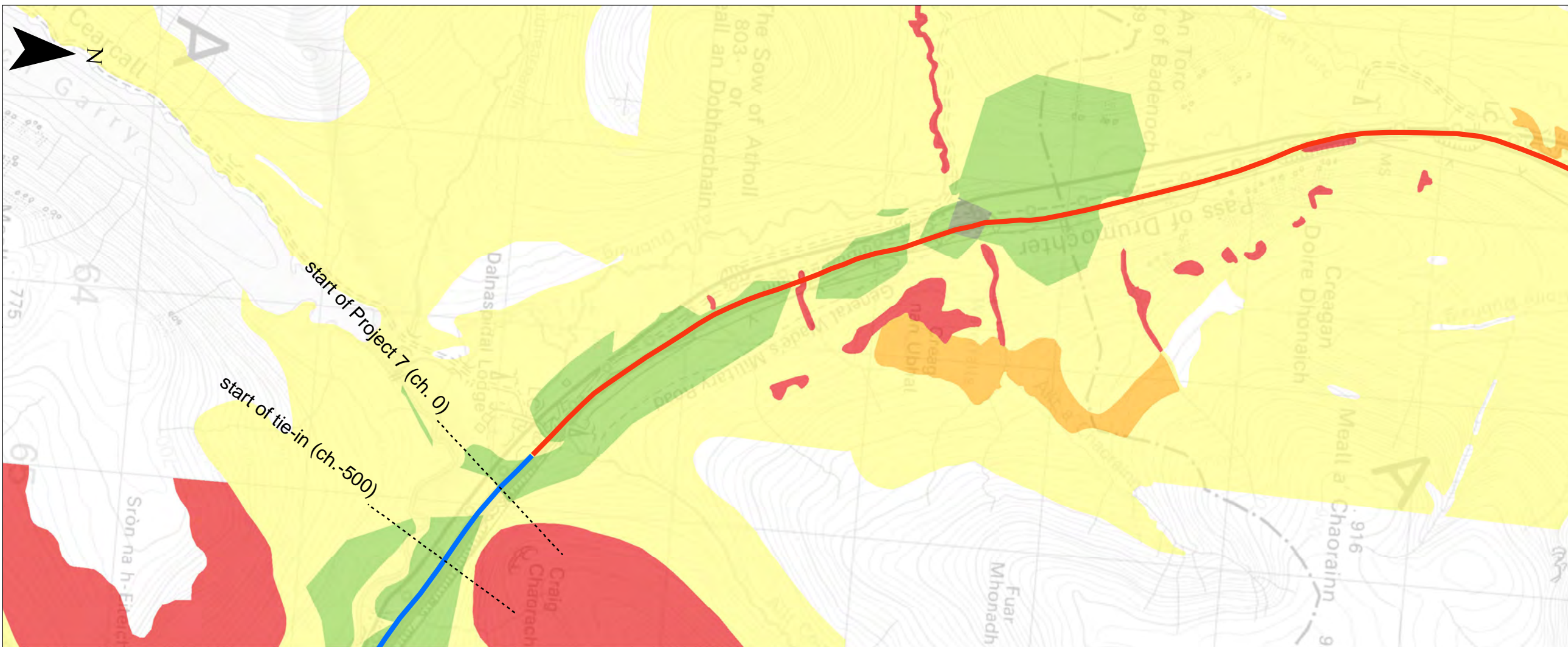












**Legend**

- Proposed Scheme Extents
- Existing Dualled
- Existing Single

**Groundwater Vulnerability:**

- 5 - Vulnerable to Most Pollutants, With Rapid Impact In Many Scenarios
- 4a - Vulnerable to Those Pollutants Not Readily absorbed or Transformed (May Have Low Permeability Soil; Less Likely to Have Clay Present in Superficial Deposits)
- 4b - Vulnerable to Those Pollutants Not Readily absorbed or Transformed (More Likely to Have Clay Present in Superficial Deposits)
- 3 - Vulnerable to Some Pollutants: Many Others Significantly Attenuated
- 2 - Vulnerable to some Pollutants; But Only When Continuously Discharged / Leached
- 1 - Only Vulnerable to Conservative Pollutants in the Long Term When Continuously and Widely Discharged / Leached
- Insufficient Data to Define Vulnerability

SCALE 1:25000

P03	S3	NOV 17	FINAL REVISIONS	HA	JF
P02	S3	SEPT 17	DESIGN UPDATE	HA	JF
P01	S3	JUN 17	DRAFT FOR COMMENT	HA	JF
REV	SUIT	DATE	DESCRIPTION	BY	APP



CH2MHILL Fairhurst JV  
C/O: City Park 368 Alexandra Parade Glasgow G31 3AU  
Tel + 44 (0) 141 552 2000 Fax +44 (0) 141 552 2525



**PROJECT 7 GLEN GARRY TO DALWHINNIE EIA  
BASELINE PLAN  
DRAWING 10.9  
GROUNDWATER VULNERABILITY**

DESIGN: CK	DRAWN: HA	CHK: CK	APP: JF
---------------	--------------	------------	------------

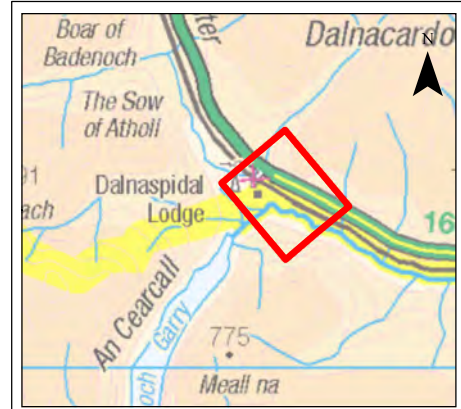
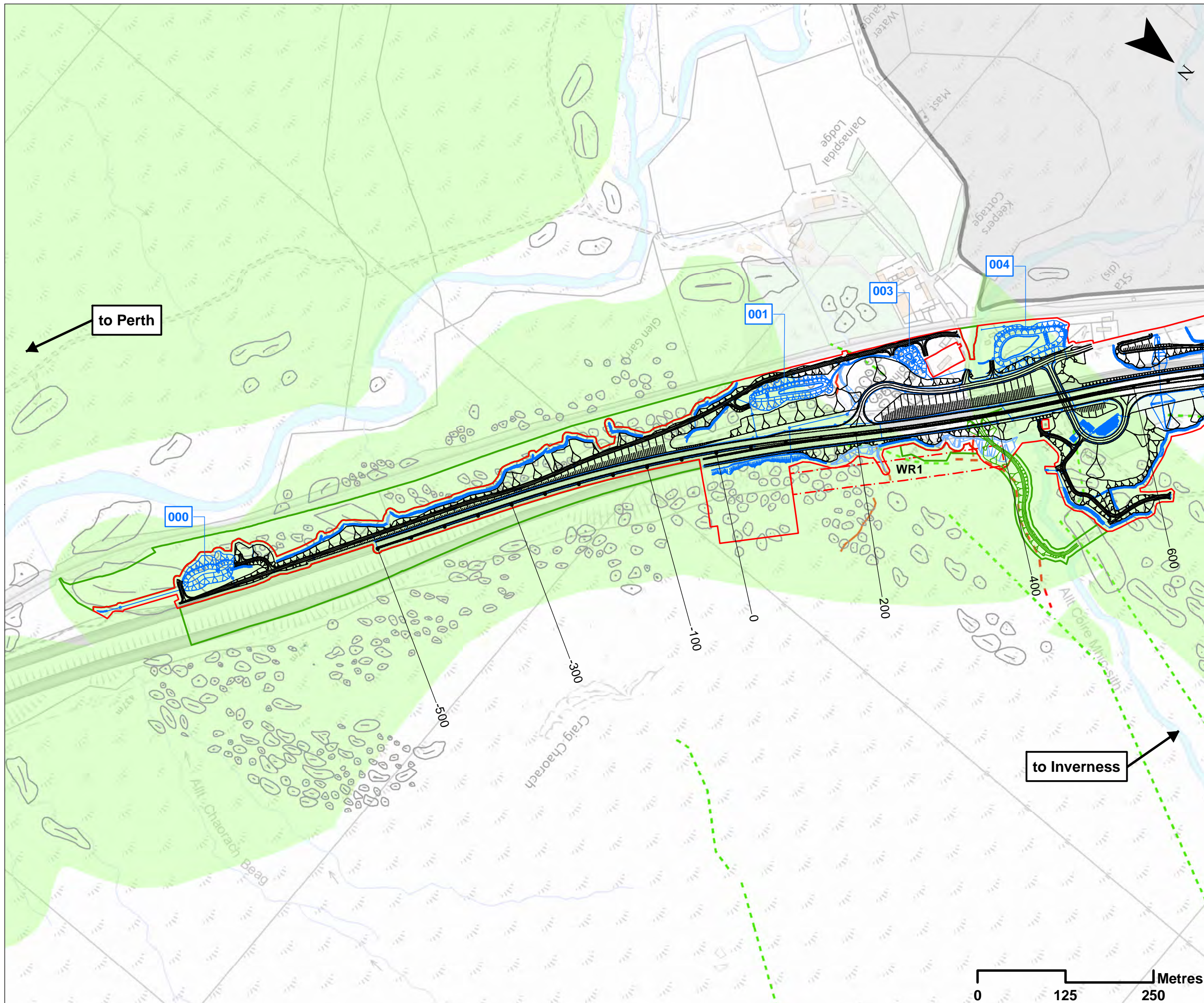
DATE: 20/10/2017

PROJ: 495298

DWG: A9P07-CFJ-EGT-L\_ZZZZZ\_ZZ-DR-EN-0009

SHEET: 1 of 1	REVISION: C01	SUITABILITY: A3
------------------	------------------	--------------------





**Legend**

- Proposed Scheme Detail
- Dalnacardoch Temporary Construction Access
- Watercourse Diversions
- Drainage
- 000 SuDS ID
- Assessment Boundary - Permanent Works
- Assessment Boundary - Temporary Works
- WR 30m Winter Resilience Tree Belt (Indicative)
- Alluvial Fan Deposits
- Hummocky (Moundy) Glacial
- Hummocky (Moundy) Glacial Deposits-Diamiction, Sand and Gravel
- Hummocky (Moundy) Glacial Deposits-Gravel, Sand and Silt
- Hummocky (Moundy) Glacial Deposits-Sand, Gravel and Boulders
- Allt Dubhaig Geological Conservation Review (GCR) Site (within SSSI)
- Drumochter Hummocky Moraines (Moraine Ridges and Mounds) (Lukas, 2004)
- Geomorphology:**
- ▲ Peat
- ▲ Bog burst
- ▲ Peat slide
- Coupled debris flow
- Debris flow
- Hill slope failure
- Valley side erosion
- Unvegetated bar (partial exposures)
- Break in slope
- Terrace
- Contemporary channel
- Original channel
- Incision
- Potential valley side erosion
- Valley side erosion

**SCALE 1:5000**

REV	SUJ	DATE	DESCRIPTION	HA	JF
P03	S3	NOV 17	FINAL REVISIONS	HA	JF
P02	S3	SEPT 17	DESIGN UPDATE	HA	JF
P01	S3	JUN 17	DRAFT FOR COMMENT	HA	JF

**ch2m: FAIRHURST**  
 CH2MHILL Fairhurst JV  
 C/O: City Park 368 Alexandra Parade Glasgow G31 3AU  
 Tel + 44 (0) 141 552 2000 Fax +44 (0) 141 552 2525



**PROJECT 7 GLEN GARRY TO DALWHINNIE EIA  
 ASSESSMENT PLAN  
 DRAWING 10.10  
 DESIGNATED AND NON-DESIGNATED GEOLOGICAL  
 / GEODIVERSITY FEATURES  
 chainage -500m to 600**

DESIGN: CK	DRAWN: HA	CHK: CK	APP: JF
---------------	--------------	------------	------------

DATE: 21/11/2017  
 PROJ: 495298

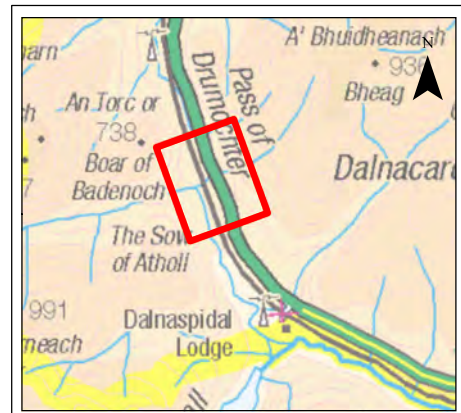
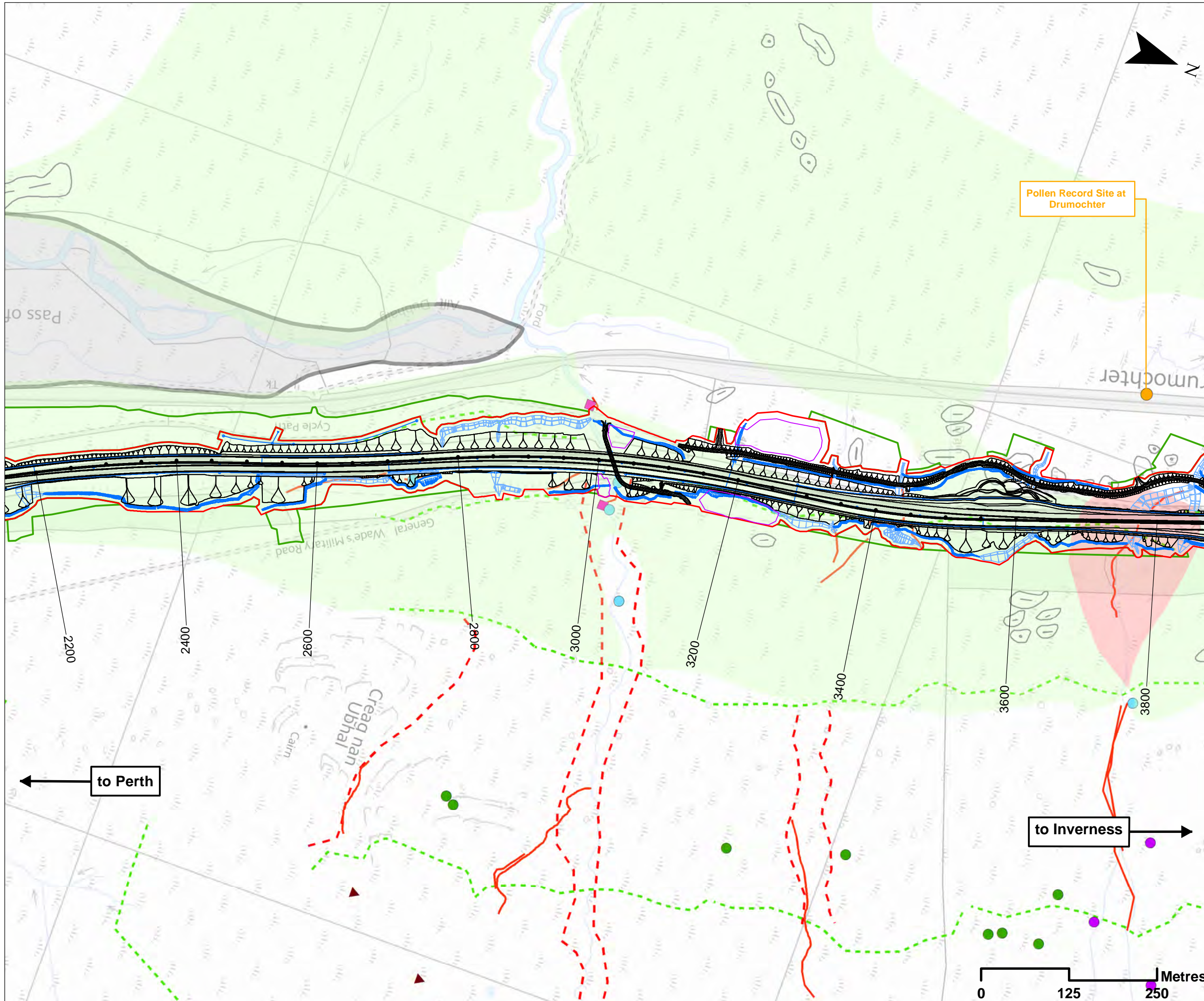
DWG: A9P07-CFJ-EGT-L_ML000_ZZ-DR-EN-0001		
SHEET: 1 OF 7	REVISION: C01	SUITABILITY: A3

Document Path: \\g:\p07\Geospatial\Projects\A9\_Dualling\10\_Geology\Drawing\_10.10.mxd









- Legend**
- Proposed Scheme Detail
  - Watercourse Diversions
  - Drainage
  - Compensatory Storage Area
  - Assessment Boundary - Permanent Works
  - Assessment Boundary - Temporary Works
  - Alluvial Fan Deposits
  - Hummocky (Moundy) Glacial Deposits
  - Hummocky (Moundy) Glacial Deposits- Diamicton, Sand and Gravel
  - Hummocky (Moundy) Glacial Deposits- Gravel, Sand and Silt
  - Hummocky (Moundy) Glacial Deposits- Sand, Gravel and Boulders
  - Allt Dubhaig Geological Conservation Review (GCR) Site (within SSSI)
  - Non-designated Geodiversity Site (SNH)
  - Drumochter Hummocky Moraines (Moraine Ridges and Mounds) (Lukas, 2004)
- Geomorphology:**
- ▲ Peat
  - ▲ Bog burst
  - ▲ Peat slide
  - Coupled debris flow
  - Debris flow
  - Hill slope failure
  - Valley side erosion
  - Unvegetated bar (partial exposures)
  - Break in slope
  - Terrace
  - Contemporary channel
  - Original channel
  - Incision
  - Potential valley side erosion
  - Valley side erosion

**SCALE 1:5000**

REV	NO	DATE	DESCRIPTION	HA	JF
P03	S3	NOV 17	FINAL REVISIONS	HA	JF
P02	S3	SEPT 17	DESIGN UPDATE	HA	JF
P01	S3	JUN 17	DRAFT FOR COMMENT	HA	JF

**ch2m: FAIRHURST**  
 CH2MHILL Fairhurst JV  
 C/O: City Park 368 Alexandra Parade Glasgow G31 3AU  
 Tel + 44 (0) 141 552 2000 Fax +44 (0) 141 552 2525



**PROJECT 7 GLEN GARRY TO DALWHINNIE EIA  
 ASSESSMENT PLAN  
 DRAWING 10.12  
 DESIGNATED AND NON-DESIGNATED GEOLOGICAL  
 / GEODIVERSITY FEATURES  
 chainage 2200m to 3800**

DESIGN: CK	DRAWN: HA	CHK: CK	APP: JF
---------------	--------------	------------	------------

DATE: 21/11/2017  
 PROJ: 495298

DWG: A9P07-CFJ-EGT-L_ML022_ZZ-DR-EN-0001		
SHEET: 3 OF 7	REVISION: C01	SUITABILITY: A3

Document Path: \\g:\p07\Geospatial\Projects\A9\_Dualling\EGT\_L\_ML022\_ZZ-DR-EN-0001\Chapter\_10\_Geology\Drawing\_10.12.mxd

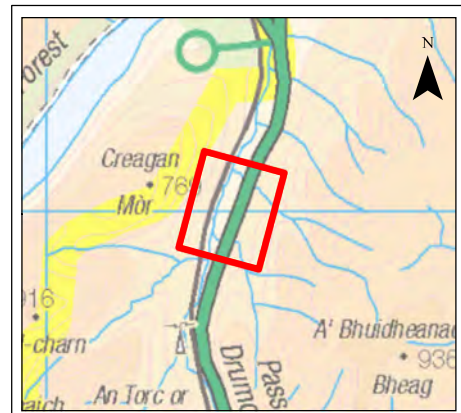
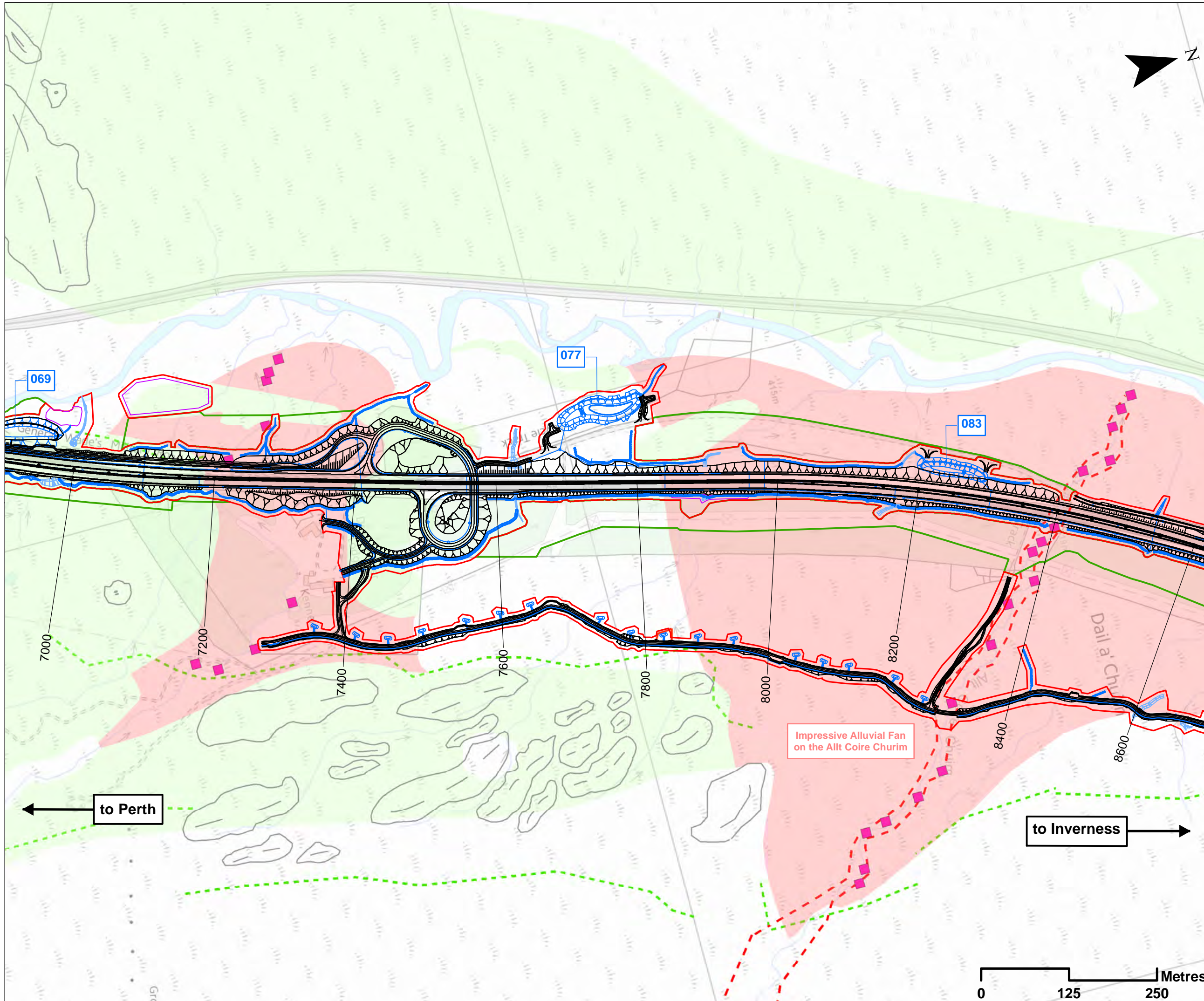












- Legend**
- Proposed Scheme Detail
  - Watercourse Diversions
  - Drainage
  - 000 SuDS ID
  - Compensatory Storage Area
  - Assessment Boundary - Permanent Works
  - Assessment Boundary - Temporary Works
  - Alluvial Fan Deposits
  - Hummocky (Moundy) Glacial Deposits
  - Hummocky (Moundy) Glacial Deposits- Diamicton, Sand and Gravel
  - Hummocky (Moundy) Glacial Deposits- Gravel, Sand and Silt
  - Hummocky (Moundy) Glacial Deposits- Sand, Gravel and Boulders
  - Drumochter Hummocky Moraines (Moraine Ridges and Mounds) (Lukas, 2004)
- Geomorphology:**
- ▲ Peat
  - ▲ Bog burst
  - ▲ Peat slide
  - Coupled debris flow
  - Debris flow
  - Hill slope failure
  - Valley side erosion
  - Unvegetated bar (partial exposures)
  - Break in slope
  - Terrace
  - Contemporary channel
  - Original channel
  - Incision
  - Potential valley side erosion
  - Valley side erosion

**SCALE 1:5000**

P03	S3	NOV 17	FINAL REVISIONS	HA	JF
P02	S3	SEPT 17	DESIGN UPDATE	HA	JF
P01	S3	JUN 17	DRAFT FOR COMMENT	HA	JF
REV	SUJ	DATE	DESCRIPTION	BY	APP

**ch2m. FAIRHURST**  
 CH2MHILL Fairhurst JV  
 C/O: City Park 368 Alexandra Parade Glasgow G31 3AU  
 Tel + 44 (0) 141 552 2000 Fax +44 (0) 141 552 2525



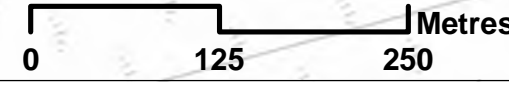
**PROJECT 7 GLEN GARRY TO DALWHINNIE EIA  
 ASSESSMENT PLAN  
 DRAWING 10.15  
 DESIGNATED AND NON-DESIGNATED GEOLOGICAL  
 / GEODIVERSITY FEATURES  
 chainage 7000m to 8600**

DESIGN: CK	DRAWN: HA	CHK: CK	APP: JF
---------------	--------------	------------	------------

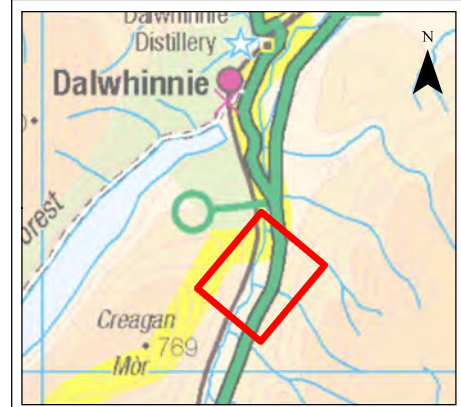
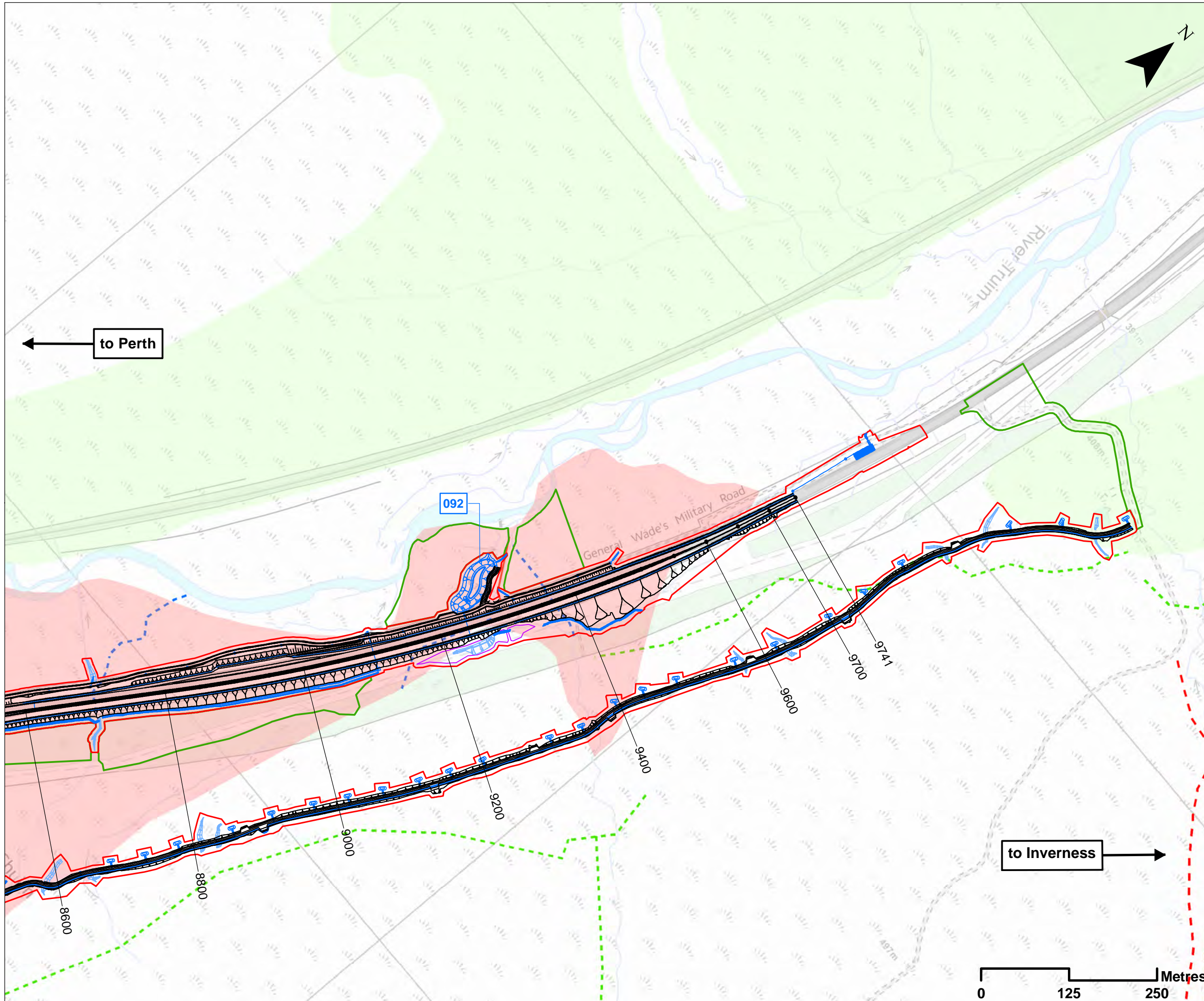
DATE: 27/11/2017  
 PROJ: 495298

DWG: A9P07-CFJ-EGT-L\_ML070\_ZZ-DR-EN-0001

SHEET: 6 OF 7	REVISION: C01	SUITABILITY: A3
------------------	------------------	--------------------







**Legend**

- Proposed Scheme Detail
- Watercourse Diversions
- Drainage
- 000 SuDS ID
- Compensatory Storage Area
- Assessment Boundary - Permanent Works
- Assessment Boundary - Temporary Works
- Alluvial Fan Deposits
- Hummocky (Moundy) Glacial Deposits
- Hummocky (Moundy) Glacial Deposits-Diamicton, Sand and Gravel
- Hummocky (Moundy) Glacial Deposits-Gravel, Sand and Silt
- Hummocky (Moundy) Glacial Deposits-Sand, Gravel and Boulders
- Geomorphology:**
- ▲ Peat
- ▲ Bog burst
- ▲ Peat slide
- Coupled debris flow
- Debris flow
- Hill slope failure
- Valley side erosion
- Unvegetated bar (partial exposures)
- Break in slope
- Terrace
- Contemporary channel
- Original channel
- Incision
- Potential valley side erosion
- Valley side erosion

**SCALE 1:5000**

P03	S3	NOV 17	FINAL REVISIONS	HA	JF
P02	S3	SEPT 17	DESIGN UPDATE	HA	JF
P01	S3	JUN 17	DRAFT FOR COMMENT	HA	JF
REV	SUIT	DATE	DESCRIPTION	BY	APP

**ch2m: FAIRHURST**  
 CH2MHILL Fairhurst JV  
 C/O: City Park 368 Alexandra Parade Glasgow G31 3AU  
 Tel + 44 (0) 141 552 2000 Fax +44 (0) 141 552 2525



**PROJECT 7 GLEN GARRY TO DALWHINNIE EIA  
 ASSESSMENT PLAN  
 DRAWING 10.16  
 DESIGNATED AND NON-DESIGNATED GEOLOGICAL  
 / GEODIVERSITY FEATURES  
 chainage 8600m to 9741**

DESIGN: CK	DRAWN: HA	CHK: CK	APP: JF
---------------	--------------	------------	------------

DATE: 27/11/2017  
 PROJ: 495298

DWG: A9P07-CFJ-EGT-L\_ML086\_ZZ-DR-EN-0001

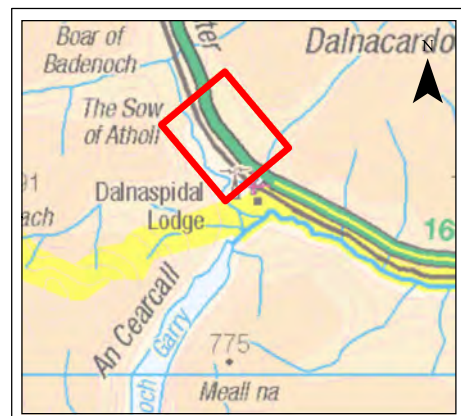
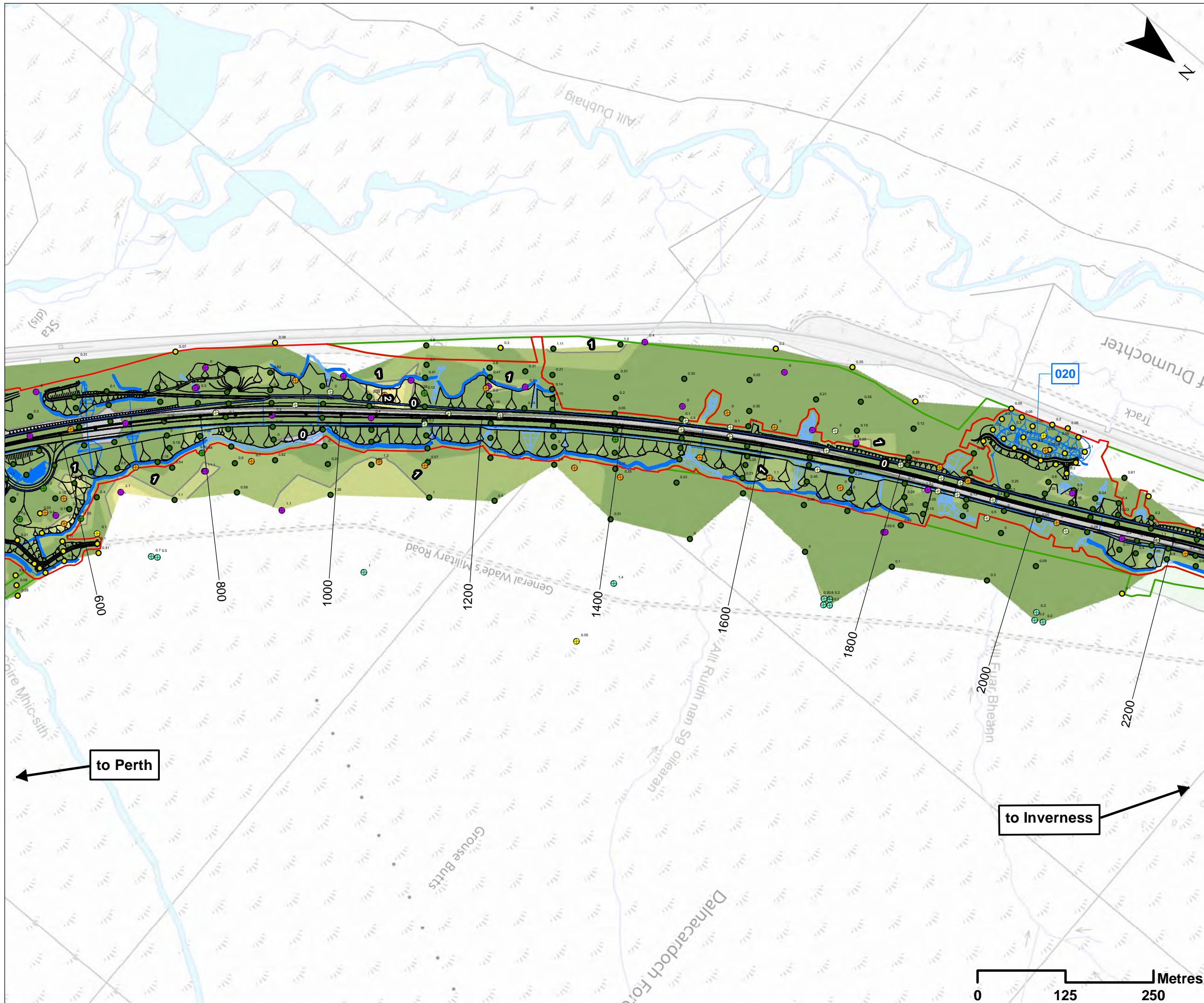
SHEET: 7 OF 7	REVISION: C01	SUITABILITY: A3
------------------	------------------	--------------------

Document Path: \\g:\p07\Geospatial\Projects\A9\_Dualling\10\_GIS\BIM\B3\2\_ML086\_ZZ-DR-EN-0001.dwg









- Legend**
- Proposed Scheme Detail
  - Watercourse Diversions
  - Drainage
  - 000 SuDS ID
  - Assessment Boundary - Permanent Works
  - Assessment Boundary - Temporary Works
- Ground Investigation / Peat Probing Locations and Depth (m):**
- CFJV DMRB Stage 3 Peat Survey (2016)
  - Preliminary Ground Investigation Peat Probe (2017)
- Ground Investigation / Peat Coring Locations and Depth (m):**
- CFJV DMRB Stage 3 Peat Survey (2016)
  - Preliminary Ground Investigation Peat Core (2017)
  - Preliminary Ground Investigation (2017)
  - Advanced Ground Investigation (2015)
  - Beauldy Denny 400KV OHL Ground Investigation (2011 - 2013)
  - BGS Borehole Location
- Peat Model: Depth Contours (m bgl)**
- No Peat
  - 0.0 - 0.5
  - 0.5 - 1
  - 1 - 1.5
  - 1.5 - 2
  - 2 - 2.5
  - 2.5 - 3
- Peat Contour Lines (1m bgl)
- 1 Peat Contour Labels (m bgl)

**SCALE 1:5000**

REV	SUJ	DATE	DESCRIPTION	HA	JF
P03	S3	NOV 17	FINAL REVISIONS	HA	JF
P02	S3	SEPT 17	DESIGN UPDATE	HA	JF
P01	S3	JUN 17	DRAFT FOR COMMENT	HA	JF

**ch2m: FAIRHURST**  
 CH2MHILL Fairhurst JV  
 C/O: City Park 368 Alexandra Parade Glasgow G31 3AU  
 Tel + 44 (0) 141 552 2000 Fax +44 (0) 141 552 2525



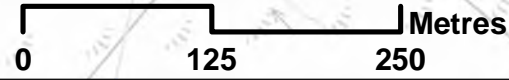
**PROJECT 7 GLEN GARRY TO DALWHINNIE EIA  
 ASSESSMENT PLAN  
 DRAWING 10.18  
 PEAT SURVEY RESULTS  
 chainage 600 to 2200**

DESIGN: CK	DRAWN: HA	CHK: CK	APP: JF
---------------	--------------	------------	------------

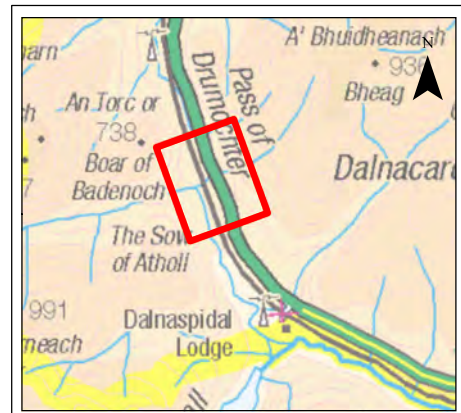
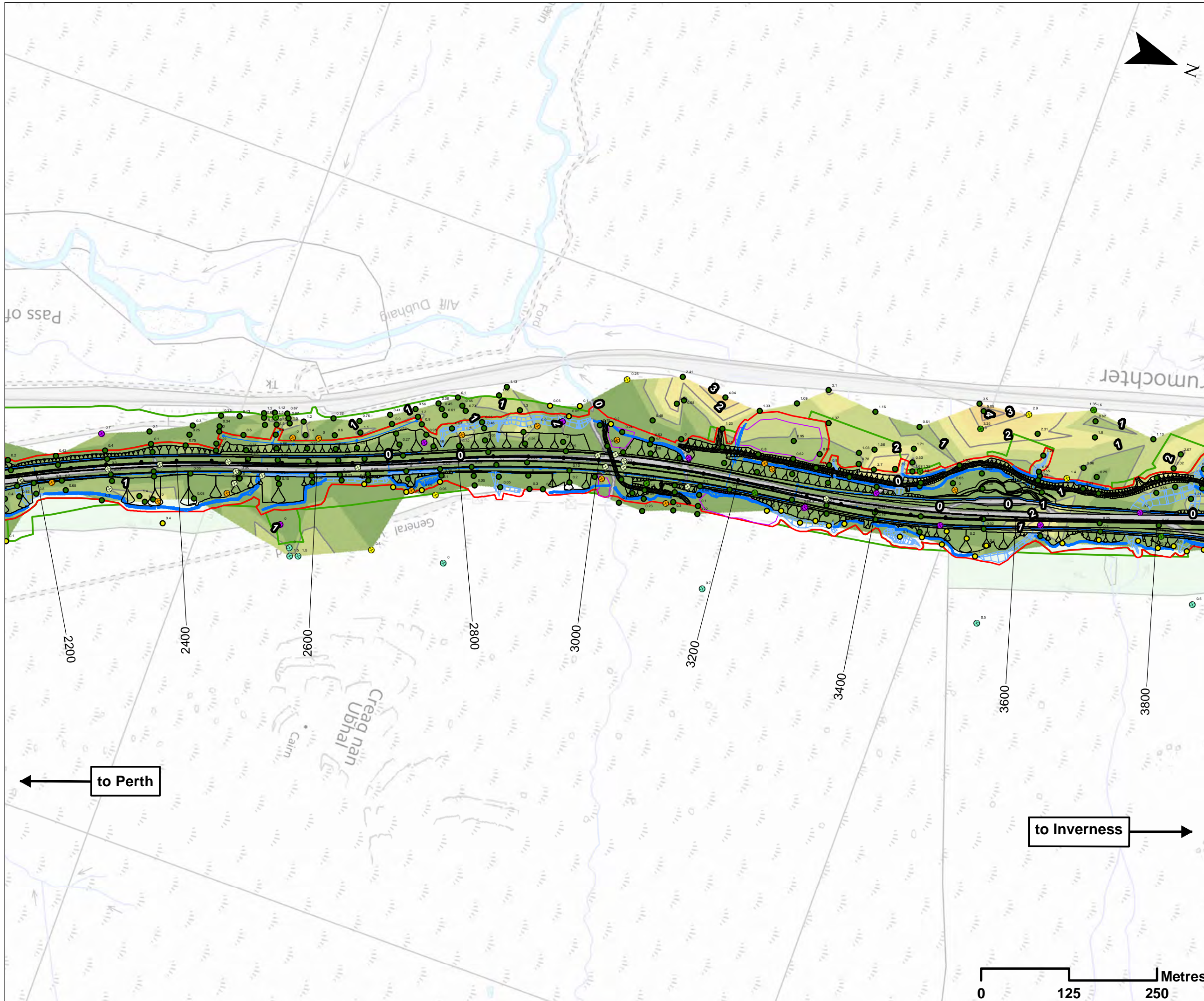
DATE: 27/11/2017  
 PROJ: 495298

DWG: A9P07-CFJ-EGT-L\_ML006\_ZZ-DR-EN-0002

SHEET: 2 OF 7	REVISION: C01	SUITABILITY: A3
------------------	------------------	--------------------







**Legend**

- Proposed Scheme Detail
- Watercourse Diversions
- Drainage
- Compensatory Storage
- Assessment Boundary - Permanent
- Assessment Boundary - Temporary

**Ground Investigation / Peat Probing Locations and Depth (m):**

- CFJV DMRB Stage 3 Peat Survey (2016)
- Preliminary Ground Investigation Peat Probe (2017)

**Ground Investigation / Peat Coring Locations and Depth (m):**

- CFJV DMRB Stage 3 Peat Survey (2016)
- Preliminary Ground Investigation Peat Core (2017)
- Preliminary Ground Investigation (2017)
- Advanced Ground Investigation (2015)
- Beauldy Denny 400KV OHL Ground Investigation (2011 - 2013)
- BGS Borehole Location

**Peat Model: Depth Contours (m bgl)**

- No Peat
- 0.0 - 0.5
- 0.5 - 1
- 1 - 1.5
- 1.5 - 2
- 2 - 2.5
- 2.5 - 3
- 3 - 3.5
- 3.5 - 4
- 4 - 4.5
- 4.5 - 5

Peat Contour Lines (1m bgl)  
 Peat Contour Labels (m bgl)

**SCALE 1:5000**

P03	S3	NOV 17	FINAL REVISIONS	HA	JF
P02	S3	SEPT 17	DESIGN UPDATE	HA	JF
P01	S3	JUN 17	DRAFT FOR COMMENT	HA	JF
REV	SUJ	DATE	DESCRIPTION	BY	APP

**ch2m: FAIRHURST**  
 CH2MHILL Fairhurst JV  
 C/O: City Park 368 Alexandra Parade Glasgow G31 3AU  
 Tel + 44 (0) 141 552 2000 Fax +44 (0) 141 552 2525



**PROJECT 7 GLEN GARRY TO DALWHINNIE EIA ASSESSMENT PLAN DRAWING 10.19 PEAT SURVEY RESULTS chainage 2200 to 3800**

DESIGN: CK	DRAWN: HA	CHK: CK	APP: JF
---------------	--------------	------------	------------

DATE: 21/11/2017  
 PROJ: 495298

DWG: A9P07-CFJ-EGT-L ML022 ZZ-DR-EN-0002		
SHEET: 3 OF 7	REVISION: C01	SUITABILITY: A3

Document Path: \\g:\p07\Geospatial\Projects\A9\_Dualling\10.19\10.19.mxd









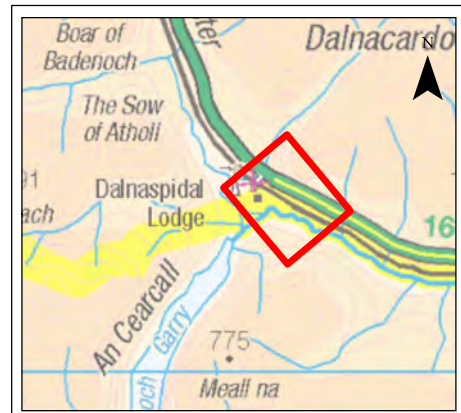
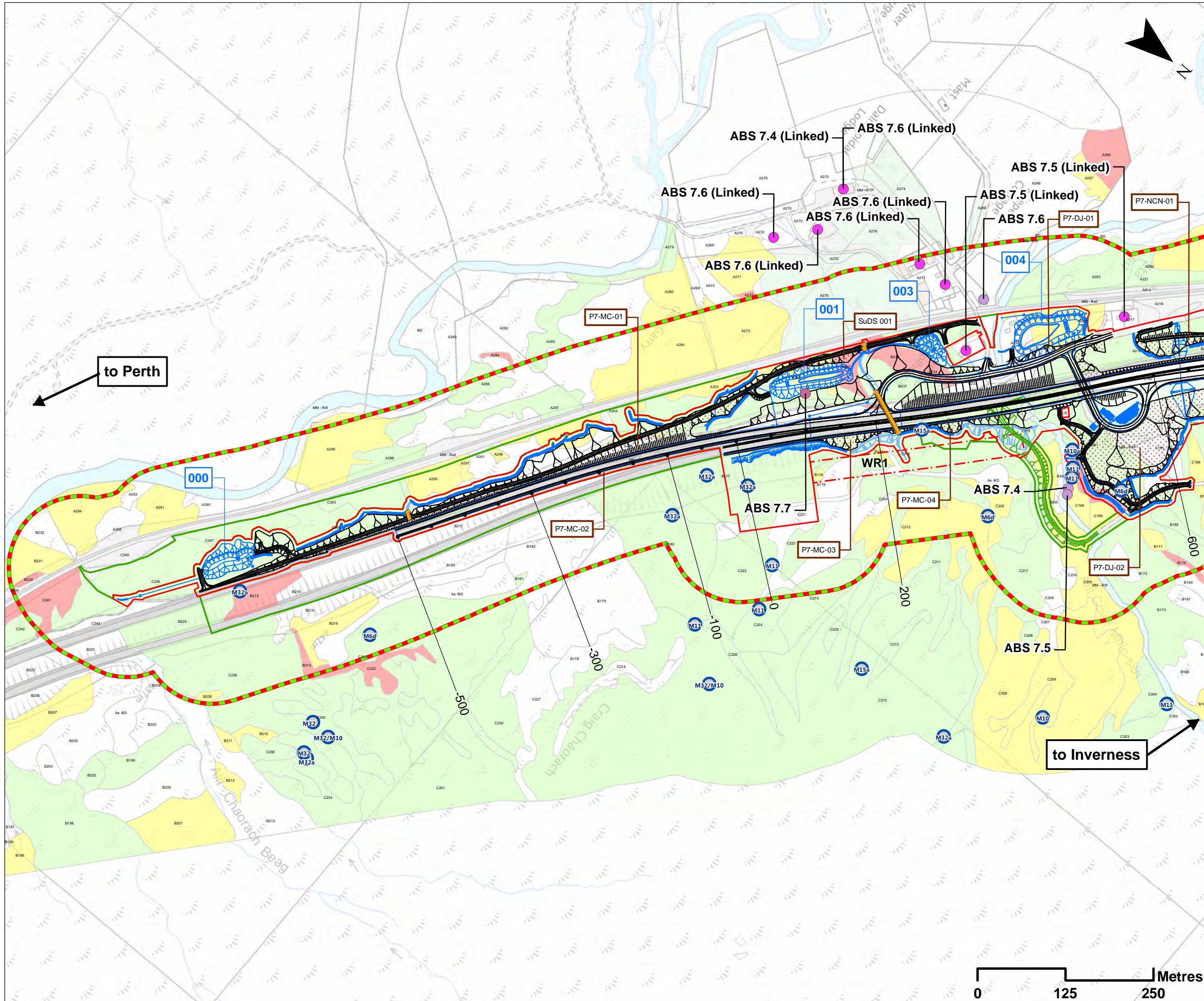












- Legend**
- Proposed Scheme Detail
  - Dalnacardoch Temporary Construction Access
  - Watercourse Diversions
  - Drainage
  - 000 SuDS ID
  - Proposed Culverts
  - Assessment Boundary - Permanent Works
  - Assessment Boundary - Temporary Works
  - WR 30m Winter Resilience Tree Belt (Indicative)
  - Earthwork Cuttings and Widening
  - P7 Earthwork Cutting ID
- Groundwater Abstractions and Private Water Supplies:**
- Private Water Supplies - Source Location
  - Private Water Supplies (Historical Well)
  - Private Water Supplies - Supplied Property
- ABS 7.0 Abstraction/ Private Water Supply ID**
- Potential GWDTE and Polygon IDs:**
- Highly Groundwater Dependent
  - Moderately Groundwater Dependent
  - Partially Groundwater Dependent
  - Not Groundwater Dependent
  - Target Note Locations and IDs
  - Minimum Potential GWDTE Study Area

**Notes:**  
 Only excavations anticipated to be equal to or greater than 1.00m are specifically labelled  
 Potential GWDTE ratings shown are based solely on SEPA guidance (2014). The likely dependency of each area is considered and assessed in Appendix 10.2 (Volume 2) of the Environmental Statement. Reference should therefore be made to this as necessary.

**SCALE 1:5000**

REV	SUJ	DATE	DESCRIPTION	HA	JF
P03	S3	NOV 17	FINAL REVISIONS	HA	JF
P02	S3	SEPT 17	DESIGN UPDATE	HA	JF
P01	S3	JUN 17	DRAFT FOR COMMENT	HA	JF
				BY	APP

**ch2m: FAIRHURST**  
 CH2MHILL Fairhurst JV  
 C/O: City Park 368 Alexandra Parade Glasgow G31 3AU  
 Tel + 44 (0) 141 552 2000 Fax +44 (0) 141 552 2525

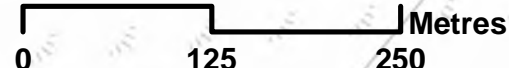


**PROJECT 7 GLEN GARRY TO DALWHINNIE EIA ASSESSMENT PLAN**  
**DRAWING 10.24**  
**GROUNDWATER ABSTRACTIONS, PRIVATE WATER SUPPLIES AND POTENTIAL GWDTE**  
 chainage -500m to 600

DESIGN: CK	DRAWN: HA	CHK: CK	APP: JF
---------------	--------------	------------	------------

DATE: 22/11/2017  
 PROJ: 495298

DWG: A9P07-CFJ-EGT-L_ML000_ZZ-DR-EN-0003		
SHEET: 1 OF 7	REVISION: C01	SUITABILITY: A3

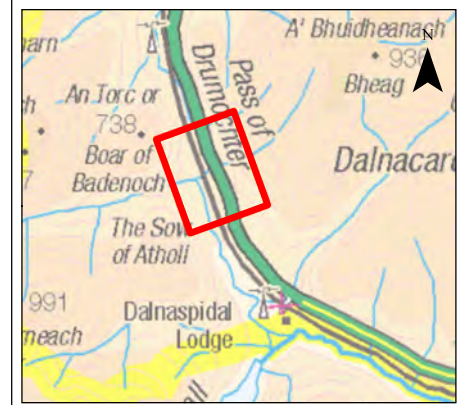
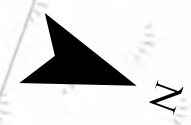
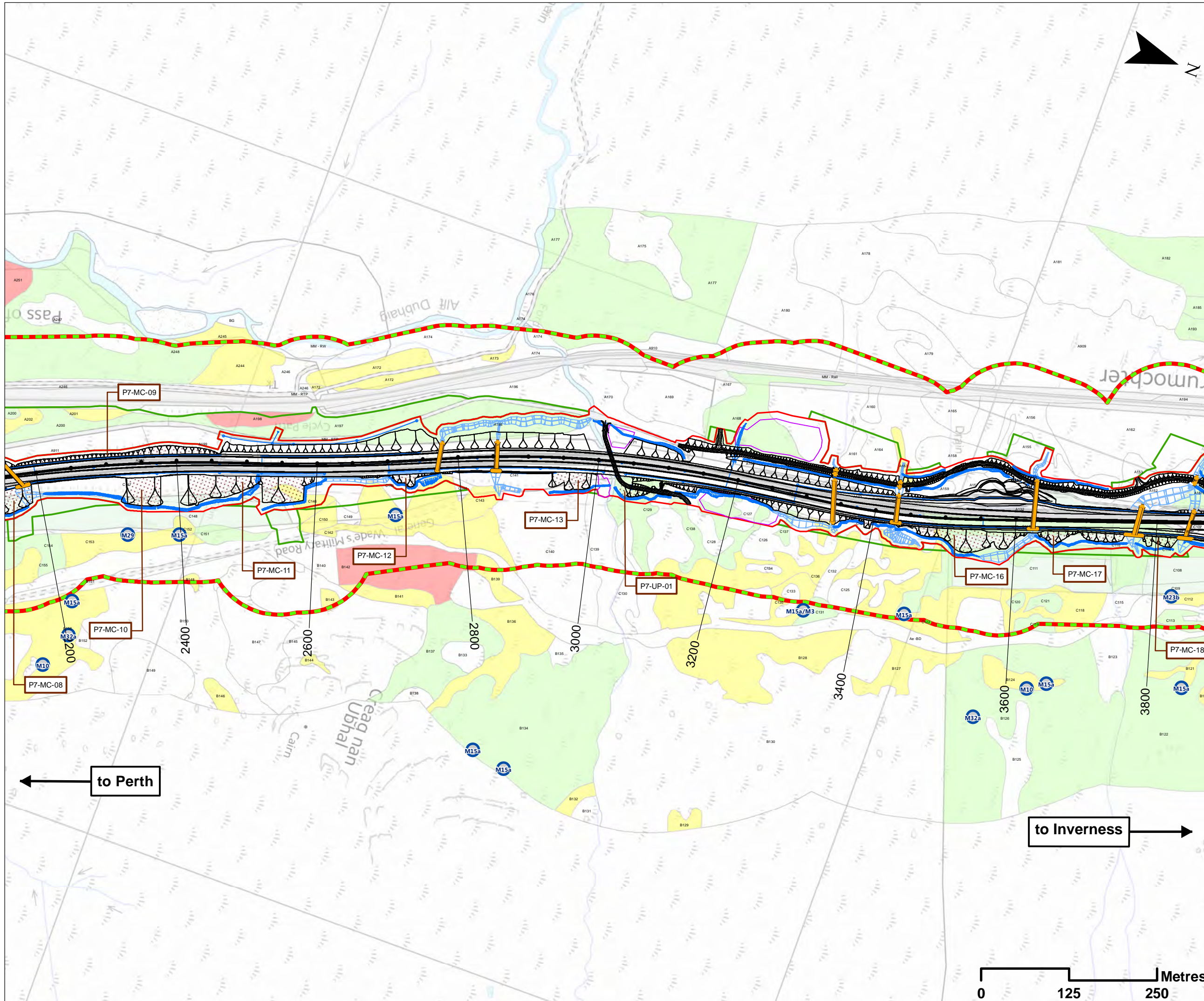


Document Path: \\g:\p07\Geospatial\Projects\A9\_Dualling\A9\_Dualling\A9P07\Chapter\_10\_Geology\Drawing\_10\_24.mxd









- ### Legend
- Proposed Scheme Detail
  - Watercourse Diversions
  - Drainage
  - Compensatory Storage Area
  - Proposed Culverts
  - Assessment Boundary - Permanent Works
  - Assessment Boundary - Temporary Works
  - ⋯ Earthwork Cuttings and Widening
  - Ⓜ P7 Earthwork Cutting ID
- Potential GWLTE and Polygon IDs:**
- Highly Groundwater Dependent
  - Moderately Groundwater Dependent
  - Partially Groundwater Dependent
  - Not Groundwater Dependent
  - Ⓜ Target Note Locations and IDs
  - Minimum Potential GWLTE Study Area

**Notes:**  
 Only excavations anticipated to be equal to or greater than 1.00m are specifically labelled

Potential GWLTE ratings shown are based solely on SEPA guidance (2014). The likely dependency of each area is considered and assessed in Appendix 10.2 (Volume 2) of the Environmental Statement. Reference should therefore be made to this as necessary.

**SCALE 1:5000**

P03	S3	NOV 17	FINAL REVISIONS	HA	JF
P02	S3	SEPT 17	DESIGN UPDATE	HA	JF
P01	S3	JUN 17	DRAFT FOR COMMENT	HA	JF
REV	SUI	DATE	DESCRIPTION	BY	APP

**ch2m FAIRHURST**  
 CH2MHILL Fairhurst JV  
 C/O: City Park 368 Alexandra Parade Glasgow G31 3AU  
 Tel + 44 (0) 141 552 2000 Fax +44 (0) 141 552 2525



**PROJECT 7 GLEN GARRY TO DALWHINNIE EIA ASSESSMENT PLAN**  
**DRAWING 10.26**  
**GROUNDWATER ABSTRACTIONS, PRIVATE WATER SUPPLIES AND GWLTE**  
 chainage 2200m to 3800

DESIGN: CK	DRAWN: HA	CHK: CK	APP: JF
---------------	--------------	------------	------------

DATE: 27/11/2017  
 PROJ: 495298

DWG: A9P07-CFJ-EGT-L_ML022_ZZ-DR-EN-0003		
SHEET: 3 OF 7	REVISION: C01	SUITABILITY: A3

to Perth ←

to Inverness →

