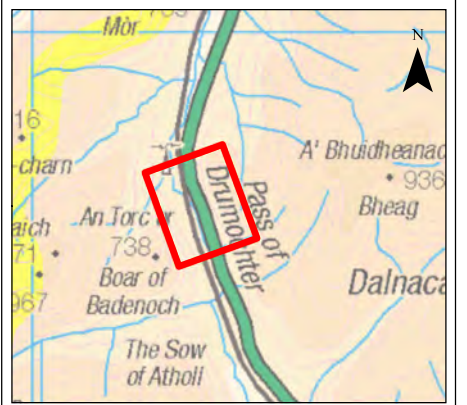
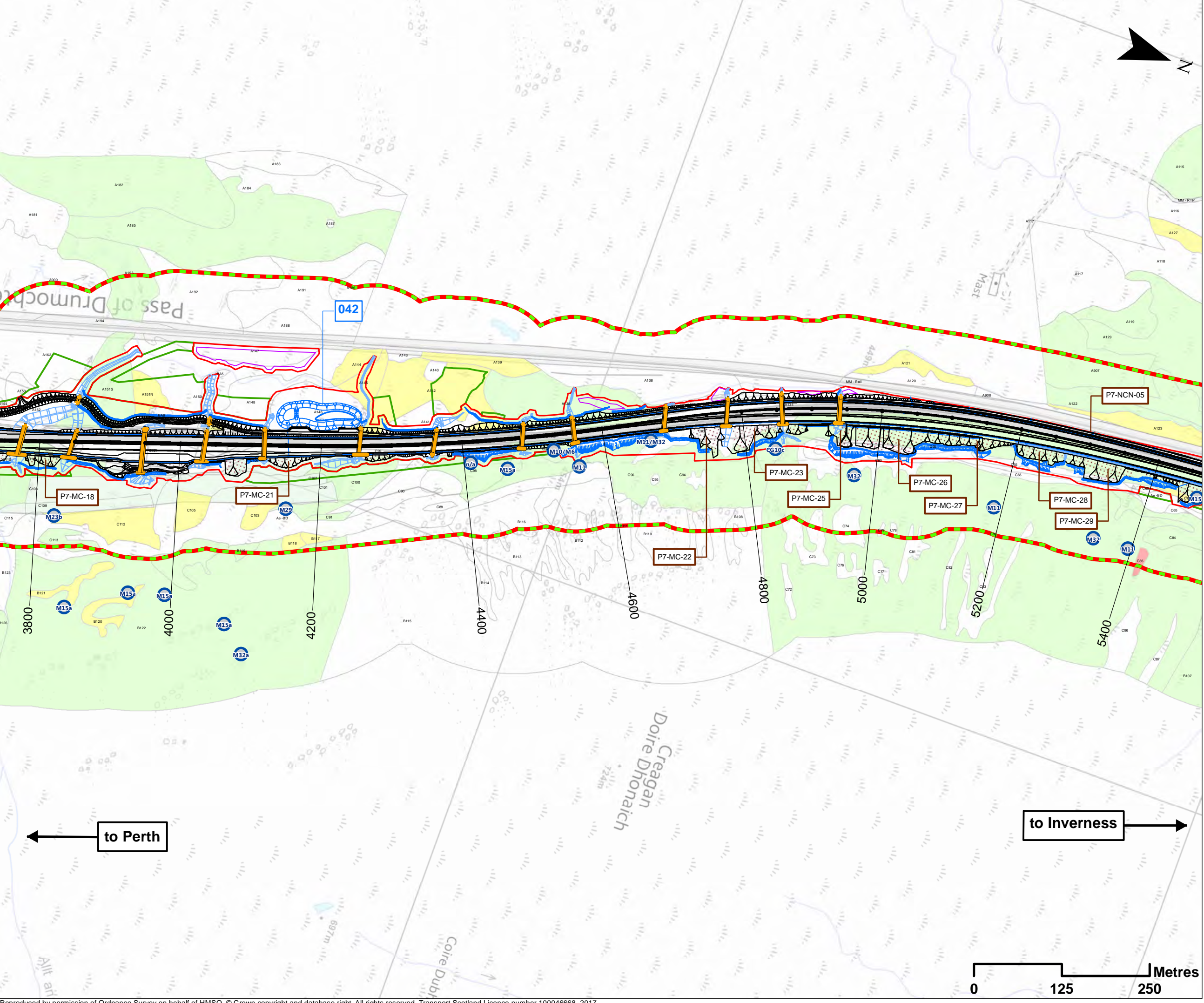


Drawing No.	Drawing Type	Drawing Title	Projectwise Drawing Reference	Software
10.27	ASSESSMENT PLAN	GROUNDWATER ABSTRACTIONS, PRIVATE WATER SUPPLIES AND GWDTE ch. 3800 to 5400	A9P07-CFJ-EGT-L_ML038_ZZ-DR-EN-0003	GIS
10.28	ASSESSMENT PLAN	GROUNDWATER ABSTRACTIONS, PRIVATE WATER SUPPLIES AND GWDTE ch. 5400 to 7000	A9P07-CFJ-EGT-L_ML054_ZZ-DR-EN-0003	GIS
10.29	ASSESSMENT PLAN	GROUNDWATER ABSTRACTIONS, PRIVATE WATER SUPPLIES AND GWDTE ch. 7000 to 8600	A9P07-CFJ-EGT-L_ML070_ZZ-DR-EN-0003	GIS
10.30	ASSESSMENT PLAN	GROUNDWATER ABSTRACTIONS, PRIVATE WATER SUPPLIES AND GWDTE ch. 8600 to 9741	A9P07-CFJ-EGT-L_ML086_ZZ-DR-EN-0003	GIS
10.31	ASSESSMENT PLAN	POTENTIAL CONTAMINATION SOURCES ch. -500 to 600	A9P07-CFJ-EGT-L_ML000_ZZ-DR-EN-0004	GIS
10.32	ASSESSMENT PLAN	POTENTIAL CONTAMINATION SOURCES ch. 600 to 2200	A9P07-CFJ-EGT-L_ML006_ZZ-DR-EN-0004	GIS
10.33	ASSESSMENT PLAN	POTENTIAL CONTAMINATION SOURCES ch. 2200 to 3800	A9P07-CFJ-EGT-L_ML022_ZZ-DR-EN-0004	GIS
10.34	ASSESSMENT PLAN	POTENTIAL CONTAMINATION SOURCES ch. 3800 to 5400	A9P07-CFJ-EGT-L_ML038_ZZ-DR-EN-0004	GIS
10.35	ASSESSMENT PLAN	POTENTIAL CONTAMINATION SOURCES ch. 5400 to 7000	A9P07-CFJ-EGT-L_ML054_ZZ-DR-EN-0004	GIS
10.36	ASSESSMENT PLAN	POTENTIAL CONTAMINATION SOURCES ch. 7000 to 8600	A9P07-CFJ-EGT-L_ML070_ZZ-DR-EN-0004	GIS
10.37	ASSESSMENT PLAN	POTENTIAL CONTAMINATION SOURCES ch. 8600 to 9741	A9P07-CFJ-EGT-L_ML086_ZZ-DR-EN-0004	GIS
10.38	ASSESSMENT PLAN	PEAT MITIGATION AREAS ch. -500 to 600	A9P07-CFJ-EGT-L_ML000_ZZ-DR-EN-0005	GIS
10.39	ASSESSMENT PLAN	PEAT MITIGATION AREAS ch. 600 to 2200	A9P07-CFJ-EGT-L_ML006_ZZ-DR-EN-0005	GIS
10.40	ASSESSMENT PLAN	PEAT MITIGATION AREAS ch. 2200 to 3800	A9P07-CFJ-EGT-L_ML022_ZZ-DR-EN-0005	GIS
10.41	ASSESSMENT PLAN	PEAT MITIGATION AREAS ch. 3800 to 5400	A9P07-CFJ-EGT-L_ML038_ZZ-DR-EN-0005	GIS
10.42	ASSESSMENT PLAN	PEAT MITIGATION AREAS ch. 5400 to 7000	A9P07-CFJ-EGT-L_ML054_ZZ-DR-EN-0005	GIS
10.43	ASSESSMENT PLAN	PEAT MITIGATION AREAS ch. 7000 to 8600	A9P07-CFJ-EGT-L_ML070_ZZ-DR-EN-0005	GIS
10.44	ASSESSMENT PLAN	PEAT MITIGATION AREAS ch. 8600 to 9741	A9P07-CFJ-EGT-L_ML086_ZZ-DR-EN-0005	GIS



- Legend**
- Proposed Scheme Detail
 - Watercourse Diversions
 - Drainage
 - 000 SuDS ID
 - Compensatory Storage Area
 - Proposed Culverts
 - Assessment Boundary - Permanent Works
 - Assessment Boundary - Temporary Works
 - Earthwork Cuttings and Widening
 - P7 Earthwork Cutting ID
 - Potential GWDTE and Polygon IDs:**
 - Highly Groundwater Dependent
 - Moderately Groundwater Dependent
 - Partially Groundwater Dependent
 - Not Groundwater Dependent
 - Target Note Locations and IDs
 - Minimum Potential GWDTE Study Area

Notes:
Only excavations anticipated to be equal to or greater than 1.00m are specifically labelled
Potential GWDTE ratings shown are based solely on SEPA guidance (2014). The likely dependency of each area is considered and assessed in Appendix 10.2 (Volume 2) of the Environmental Statement. Reference should therefore be made to this as necessary.

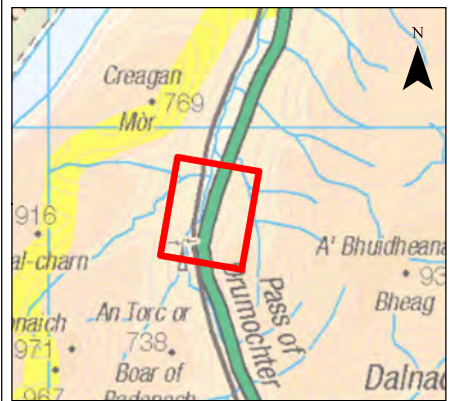
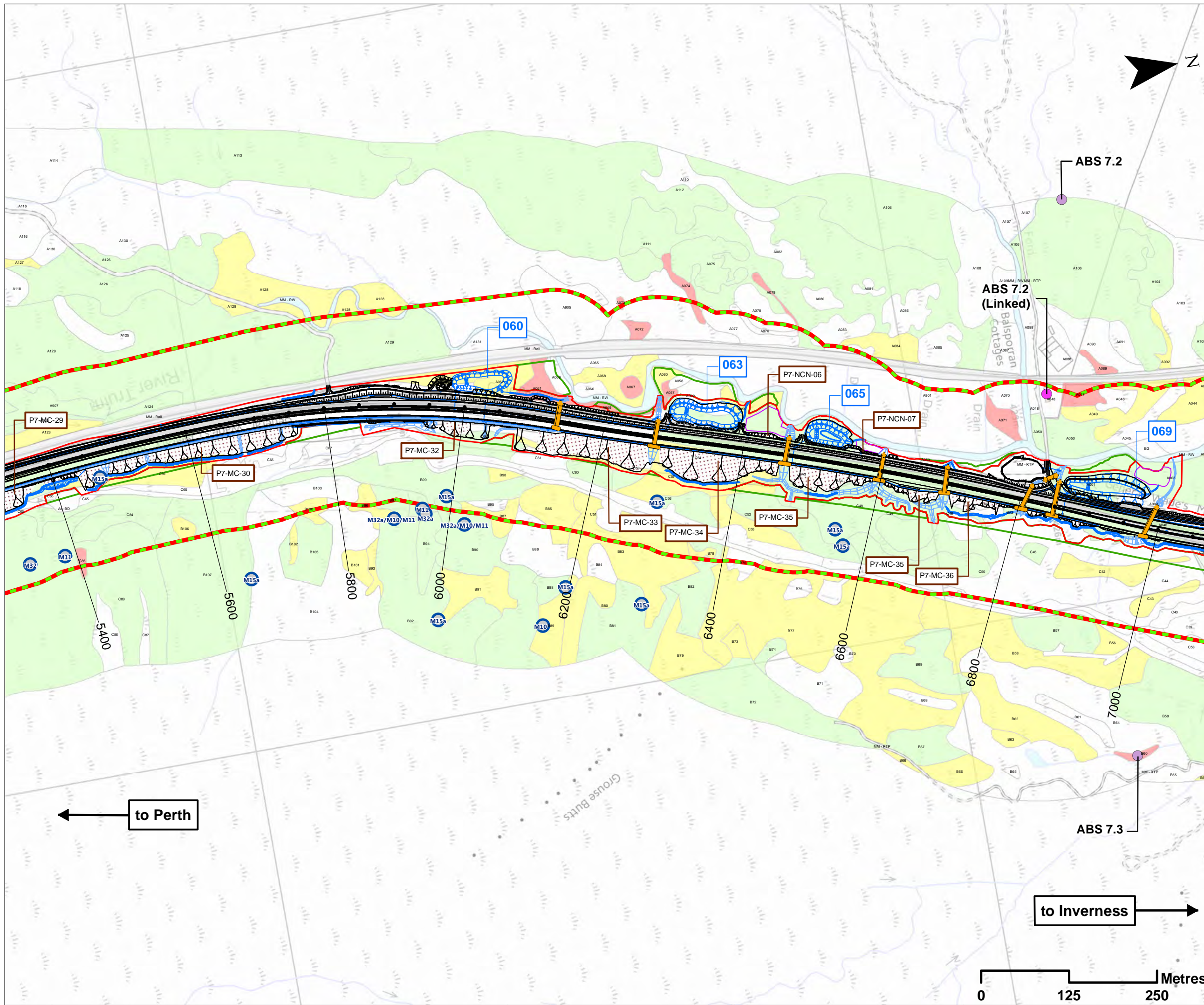
SCALE 1:5000					
P03	S3	NOV 17	FINAL REVISIONS	HA	JF
P02	S3	SEPT 17	DESIGN UPDATE	HA	JF
P01	S3	JUN 17	DRAFT FOR COMMENT	HA	JF
REV	SUIT	DATE	DESCRIPTION	BY	APP

ch2m FAIRHURST
CH2MHILL Fairhurst JV
C/O: City Park 368 Alexandra Parade Glasgow G31 3AU
Tel + 44 (0) 141 552 2000 Fax +44 (0) 141 552 2525

**PROJECT 7 GLEN GARRY TO DALWHINNIE EIA
ASSESSMENT PLAN
DRAWING 10.27
GROUNDWATER ABSTRACTIONS, PRIVATE WATER
SUPPLIES AND GWDTE
chainage 3800m to 5400**

DESIGN: CK	DRAWN: HA	CHK: CK	APP: JF
DATE: 22/11/2017			
PROJ: 495298			
DWG: A9P07-CFJ-EGT-L_ML038_ZZ-DR-EN-0003			
SHEET: 4 OF 7	REVISION: C01	SUITABILITY: A3	

Document Path: \\g:\pp\p7\geospatial\p7\p7\A9_Dualling\10.27\Drawing\10_27.mxd



Legend

- Proposed Scheme Detail
 - Watercourse Diversions
 - Drainage
 - 000 SuDS ID
 - Compensatory Storage
 - ▬ Proposed Culverts
 - ▭ Assessment Boundary - Permanent Works
 - ▭ Assessment Boundary - Temporary Works
 - Earthwork Cuttings and Widening
 - P7 Earthwork Cutting ID
- Groundwater Abstractions and Private Water Supplies:**
- Private Water Supplies - Source Location
 - Private Water Supplies - Supplied Property
- ABS 7.0 Abstraction/ Private Water Supply ID**
- Potential GWDE and Polygon IDs:**
- Highly Groundwater Dependent
 - Moderately Groundwater Dependent
 - Partially Groundwater Dependent
 - Not Groundwater Dependent
 - Target Note Locations and IDs
 - ▭ Minimum Potential GWDE Study

Notes:
 Only excavations anticipated to be equal to or greater than 1.00m are specifically labelled

Potential GWDE ratings shown are based solely on SEPA guidance (2014). The likely dependency of each area is considered and assessed in Appendix 10.2 (Volume 2) of the Environmental Statement. Reference should therefore be made to this as necessary.

SCALE 1:5000

REV	DATE	DESCRIPTION	HA	JF
P03	NOV 17	FINAL REVISIONS	HA	JF
P02	SEPT 17	DESIGN UPDATE	HA	JF
P01	JUN 17	DRAFT FOR COMMENT	HA	JF



CH2MHILL Fairhurst JV
 C/O: City Park 368 Alexandra Parade Glasgow G31 3AU
 Tel + 44 (0) 141 552 2000 Fax +44 (0) 141 552 2525



**PROJECT 7 GLEN GARRY TO DALWHINNIE EIA ASSESSMENT PLAN
 DRAWING 10.28
 GROUNDWATER ABSTRACTIONS, PRIVATE WATER SUPPLIES AND GWDE
 change 3800m to 7000**

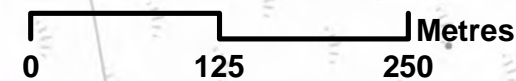
DESIGN: CK	DRAWN: HA	CHK: CK	APP: JF
---------------	--------------	------------	------------

DATE: 27/11/2017

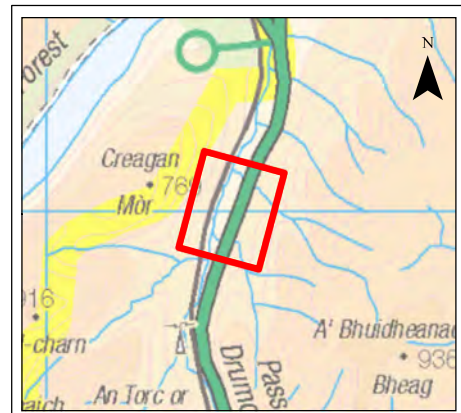
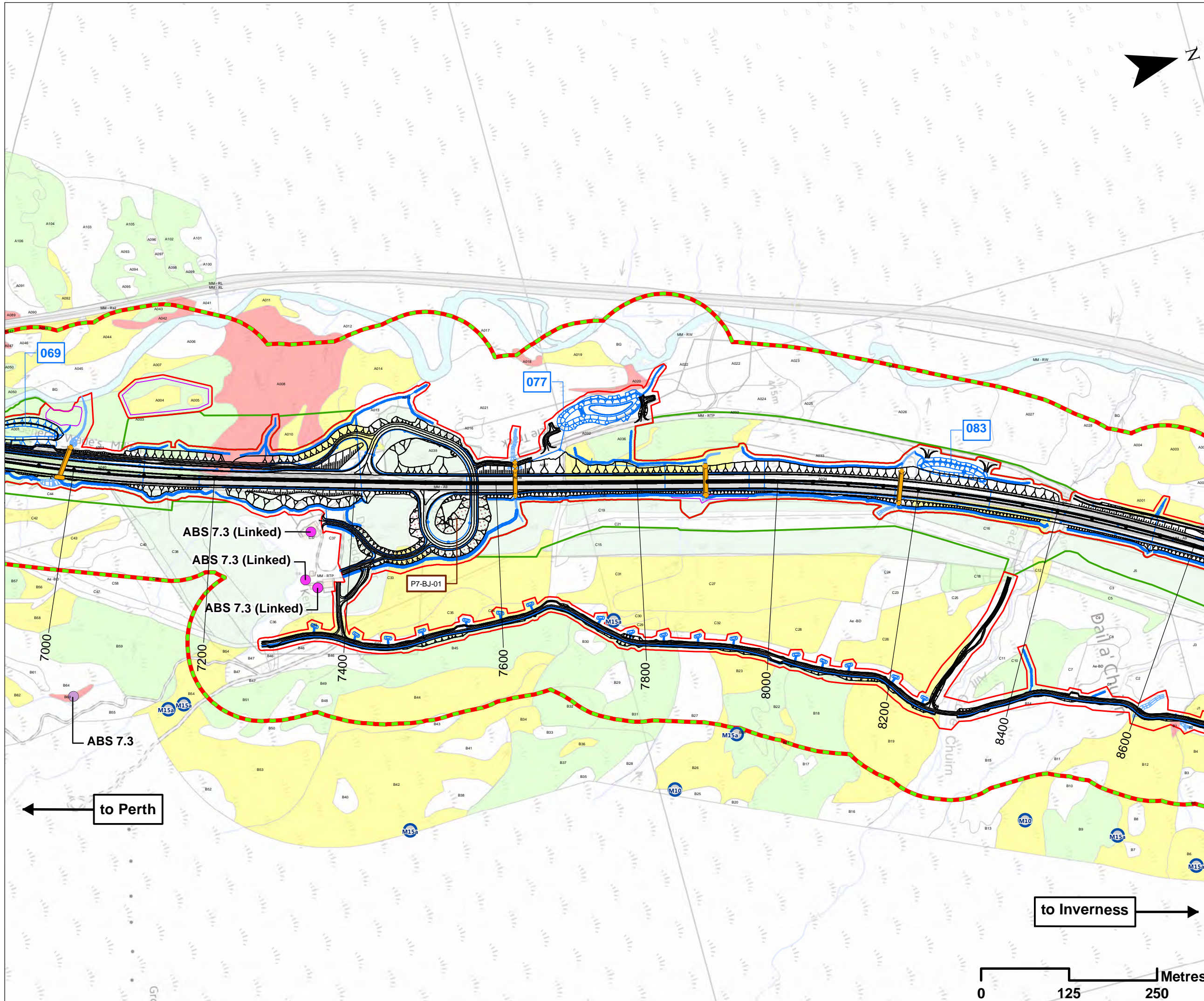
PROJ: 495298

DWG: A9P07-CFJ-EGT-L_ML054_ZZ-DR-EN-0003

SHEET: 5 OF 7	REVISION: C01	SUITABILITY: A3
------------------	------------------	--------------------



Document Path: \\gmap01\Geospatial\Projects\A9 Dualling\2_C05\BMR\3\2_ML054_ZZ-DR-EN-0003.dwg



Legend

- Proposed Scheme Detail
- Watercourse Diversions
- Drainage
- 000 SuDS ID
- Compensatory Storage Area
- Proposed Culverts
- Assessment Boundary - Permanent Works
- Assessment Boundary - Temporary Works
- ⋯ Earthwork Cuttings and Widening
- P7 Earthwork Cutting ID
- Private Water Supplies - Source Location
- Private Water Supplies - Supplied Property
- ABS 7.0 Abstraction/ Private Water Supply ID
- Potential GWDTE and Polygon IDs:**
- Highly Groundwater Dependent
- Moderately Groundwater Dependent
- Partially Groundwater Dependent
- Not Groundwater Dependent
- Target Note Locations and IDs
- Minimum Potential GWDTE Study

Notes:
 Only excavations anticipated to be equal to or greater than 1.00m are specifically labelled
 Potential GWDTE ratings shown are based solely on SEPA guidance (2014). The likely dependency of each area is considered and assessed in Appendix 10.2 (Volume 2) of the Environmental Statement. Reference should therefore be made to this as necessary.

SCALE 1:5000

P03	S3	NOV 17	FINAL REVISIONS	HA	JF
P02	S3	SEPT 17	DESIGN UPDATE	HA	JF
P01	S3	JUN 17	DRAFT FOR COMMENT	HA	JF
REV	SUIT	DATE	DESCRIPTION	BY	APP

ch2m. FAIRHURST
 CH2MHILL Fairhurst JV
 C/O: City Park 368 Alexandra Parade Glasgow G31 3AU
 Tel + 44 (0) 141 552 2000 Fax +44 (0) 141 552 2525

A9 DUALING
 TRANSPORT SCOTLAND

**PROJECT 7 GLEN GARRY TO DALWHINNIE EIA
 ASSESSMENT PLAN
 DRAWING 10.29
 GROUNDWATER ABSTRUCTIONS, PRIVATE WATER SUPPLIES AND GWDTE
 chainage 7000m to 8600**

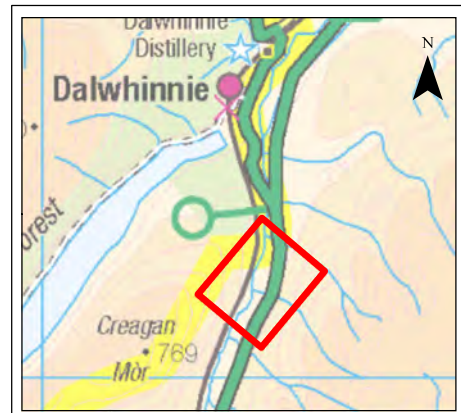
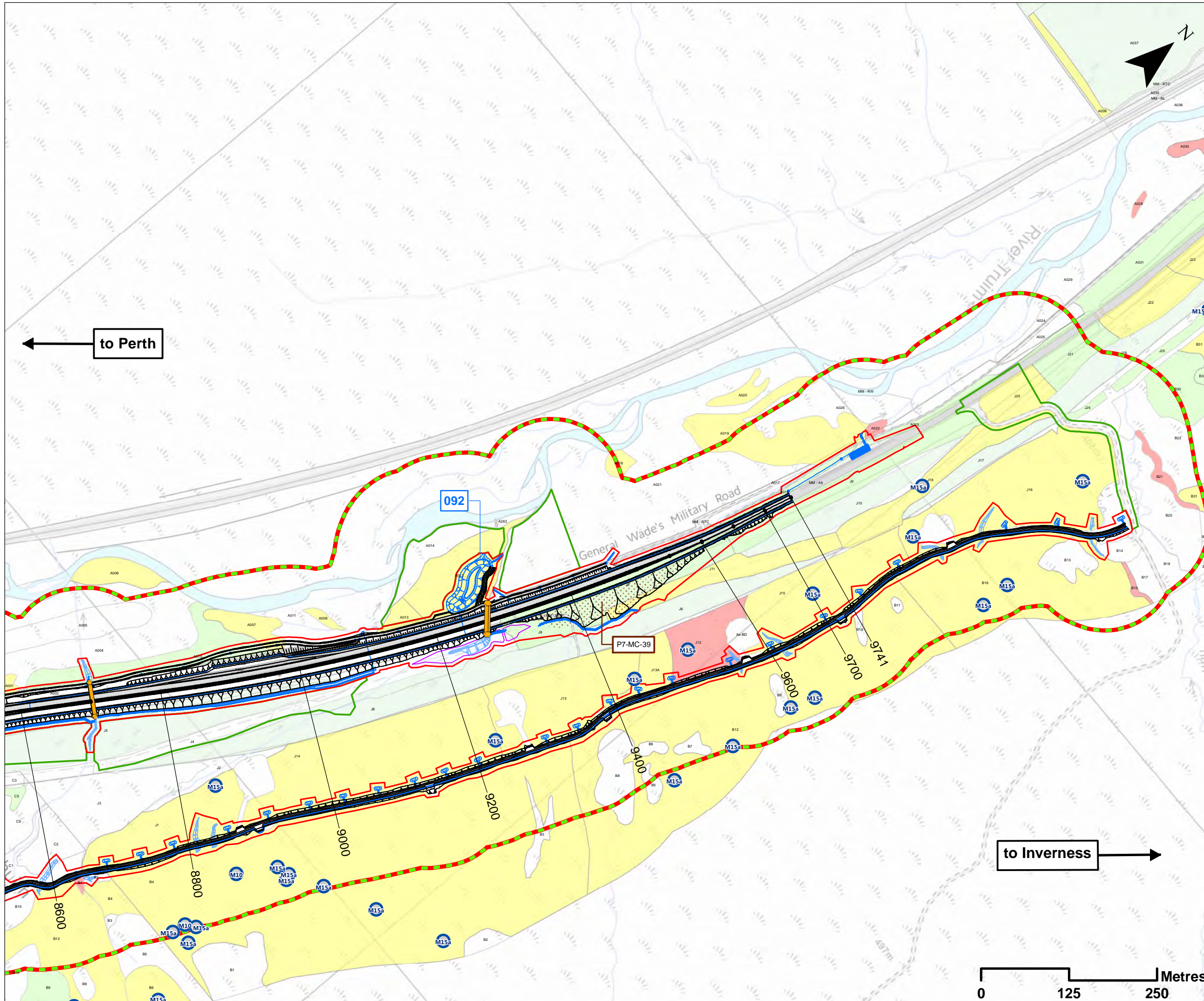
DESIGN: CK	DRAWN: HA	CHK: CK	APP: JF
---------------	--------------	------------	------------

DATE: 27/11/2017
 PROJ: 495298

DWG: A9P07-CFJ-EGT-L_ML070_ZZ-DR-EN-0003

SHEET: 6 OF 7	REVISION: C01	SUITABILITY: A3
------------------	------------------	--------------------

Document Path: \\g:\p07\Geospatial\Projects\A9_Dualing\A9_P07\Chapter_10_Geology\Drawing_10_29.mxd



- ### Legend
- Proposed Scheme Detail
 - Watercourse Diversions
 - Drainage
 - 000 SuDS ID
 - Compensatory Storage Area
 - Proposed Culverts
 - Assessment Boundary - Permanent Works
 - Assessment Boundary - Temporary Works
 - Earthwork Cuttings and Widening
 - P7 Earthwork Cutting ID
- Potential GWLTE and Polygon IDs:**
- Highly Groundwater Dependent
 - Moderately Groundwater Dependent
 - Partially Groundwater Dependent
 - Not Groundwater Dependent
 - Target Note Locations and IDs
 - Minimum Potential GWLTE Study Area

Notes:
 Only excavations anticipated to be equal to or greater than 1.00m are specifically labelled

Potential GWLTE ratings shown are based solely on SEPA guidance (2014). The likely dependency of each area is considered and assessed in Appendix 10.2 (Volume 2) of the Environmental Statement. Reference should therefore be made to this as necessary.

SCALE 1:5000

P03	S3	NOV 17	FINAL REVISIONS	HA	JF
P02	S3	SEPT 17	DESIGN UPDATE	HA	JF
P01	S3	JUN 17	DRAFT FOR COMMENT	HA	JF
REV	SUIT	DATE	DESCRIPTION	BY	APP

ch2m: FAIRHURST
 CH2MHILL Fairhurst JV
 C/O: City Park 368 Alexandra Parade Glasgow G31 3AU
 Tel + 44 (0) 141 552 2000 Fax +44 (0) 141 552 2525



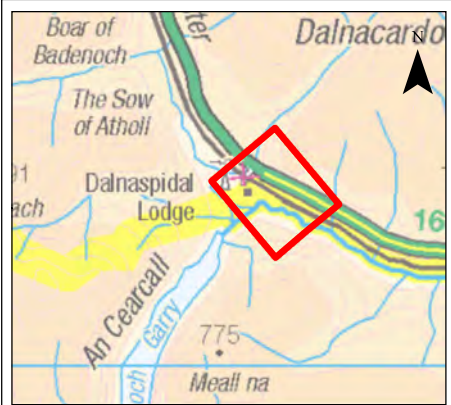
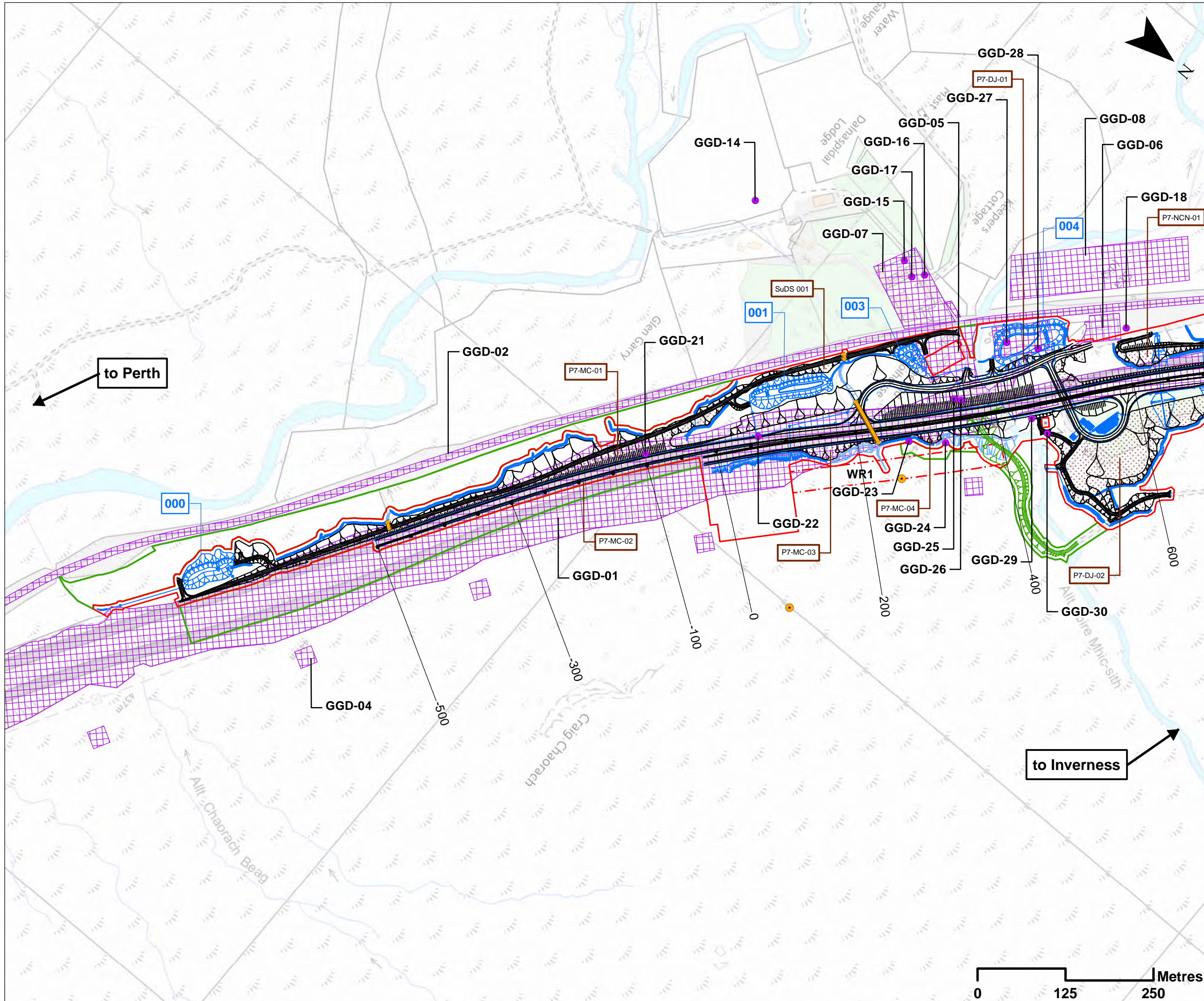
PROJECT 7 GLEN GARRY TO DALWHINNIE EIA ASSESSMENT PLAN
DRAWING 10.30
GROUNDWATER ABSTRACTIONS, PRIVATE WATER SUPPLIES AND GWLTE
 chainage 8600m to 9741

DESIGN: CK	DRAWN: HA	CHK: CK	APP: JF
---------------	--------------	------------	------------

DATE: 27/11/2017
 PROJ: 495298

DWG: A9P07-CFJ-EGT-L_ML086_ZZ-DR-EN-0003		
SHEET: 7 OF 7	REVISION: C01	SUITABILITY: A3

Document Path: \\g:\p07\Geospatial\Projects\A9_Dualling\A9_Dualling\A9P07\Chapter_10_Geology\Drawing_10_30.mxd



Legend

- Proposed Scheme Detail
- Dalnacardoch Temporary Construction Access
- Watercourse Diversions
- Drainage
- 000 SuDS ID
- Proposed Culverts
- Assessment Boundary - Permanent Works
- Assessment Boundary - Temporary Works
- 30m Winter Resilience Tree Belt (Indicative)
- Earthwork Cuttings and Widening
- P7 Earthwork Cutting ID
- Potential Contamination Sources - Polygon
- Potential Contamination Sources - Points
- GGD-00 Potential Contamination Sources Label
- Potential Radon Hazard

Notes:
Only excavations anticipated to be equal to or greater than 1.00m are specifically labelled

SCALE 1:5000						
P03	S3	NOV 17	FINAL REVISIONS	HA	JF	
P02	S3	SEPT 17	DESIGN UPDATE	HA	JF	
P01	S3	JUN 17	DRAFT FOR COMMENT	HA	JF	
REV	SUI	DATE	DESCRIPTION	BY	APP	

ch2m FAIRHURST
CH2MHILL Fairhurst JV
C/O: City Park 368 Alexandra Parade Glasgow G31 3AU
Tel + 44 (0) 141 552 2000 Fax +44 (0) 141 552 2525



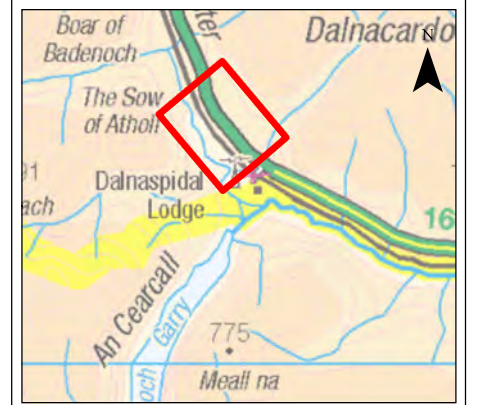
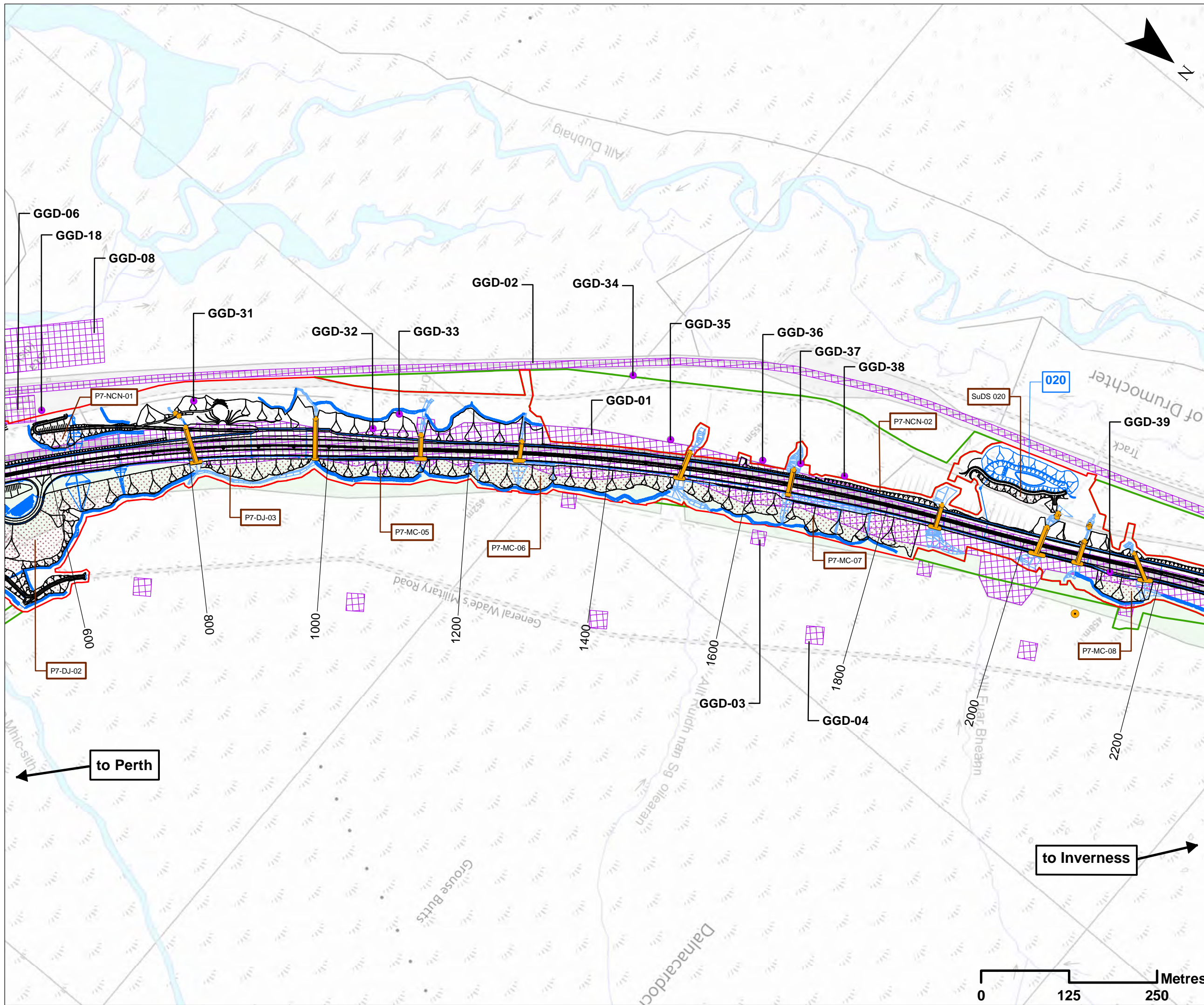
**PROJECT 7 GLEN GARRY TO DALWHINNIE EIA
ASSESSMENT PLAN
DRAWING 10.31
POTENTIAL CONTAMINATION SOURCES
chainage -500m to 600**

DESIGN: CK	DRAWN: HA	CHK: CK	APP: JF
---------------	--------------	------------	------------

DATE: 21/11/2017
PROJ: 495298

DWG: A9P07-CFJ-EGT-L ML000 ZZ-DR-EN-0004

SHEET: 1 OF 7	REVISION: C01	SUITABILITY: A3
------------------	------------------	--------------------



- ### Legend
- Proposed Scheme Detail
 - Watercourse Diversions
 - Drainage
 - SuDS ID
 - Proposed Culverts
 - Assessment Boundary - Permanent Works
 - Assessment Boundary - Temporary Works
 - Earthwork Cuttings and Widening
 - Earthwork Cutting ID
 - Potential Contamination Sources - Polygon
 - Potential Contamination Sources - Points
 - Potential Contamination Sources Label
 - Potential Radon Hazard
- Notes:
Only excavations anticipated to be equal to or greater than 1.00m are specifically labelled

to Perth

to Inverness

SCALE 1:5000

P03	S3	NOV 17	FINAL REVISIONS	HA	JF
P02	S3	SEPT 17	DESIGN UPDATE	HA	JF
P01	S3	JUN 17	DRAFT FOR COMMENT	HA	JF
REV	SUI	DATE	DESCRIPTION	BY	APP

ch2m. FAIRHURST
 CH2MHILL Fairhurst JV
 C/O: City Park 368 Alexandra Parade Glasgow G31 3AU
 Tel + 44 (0) 141 552 2000 Fax +44 (0) 141 552 2525



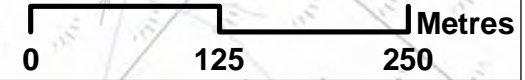
**PROJECT 7 GLEN GARRY TO DALWHINNIE EIA
 ASSESSMENT PLAN
 DRAWING 10.32
 POTENTIAL CONTAMINATION SOURCES
 chainage 600m to 2200**

DESIGN: CK	DRAWN: HA	CHK: CK	APP: JF
---------------	--------------	------------	------------

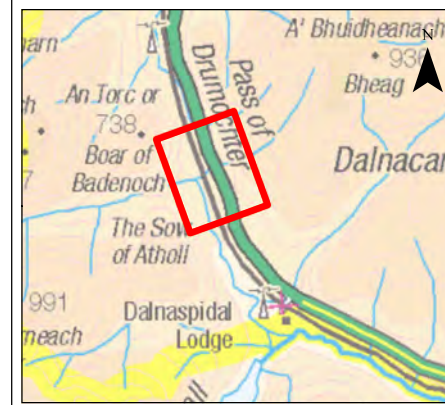
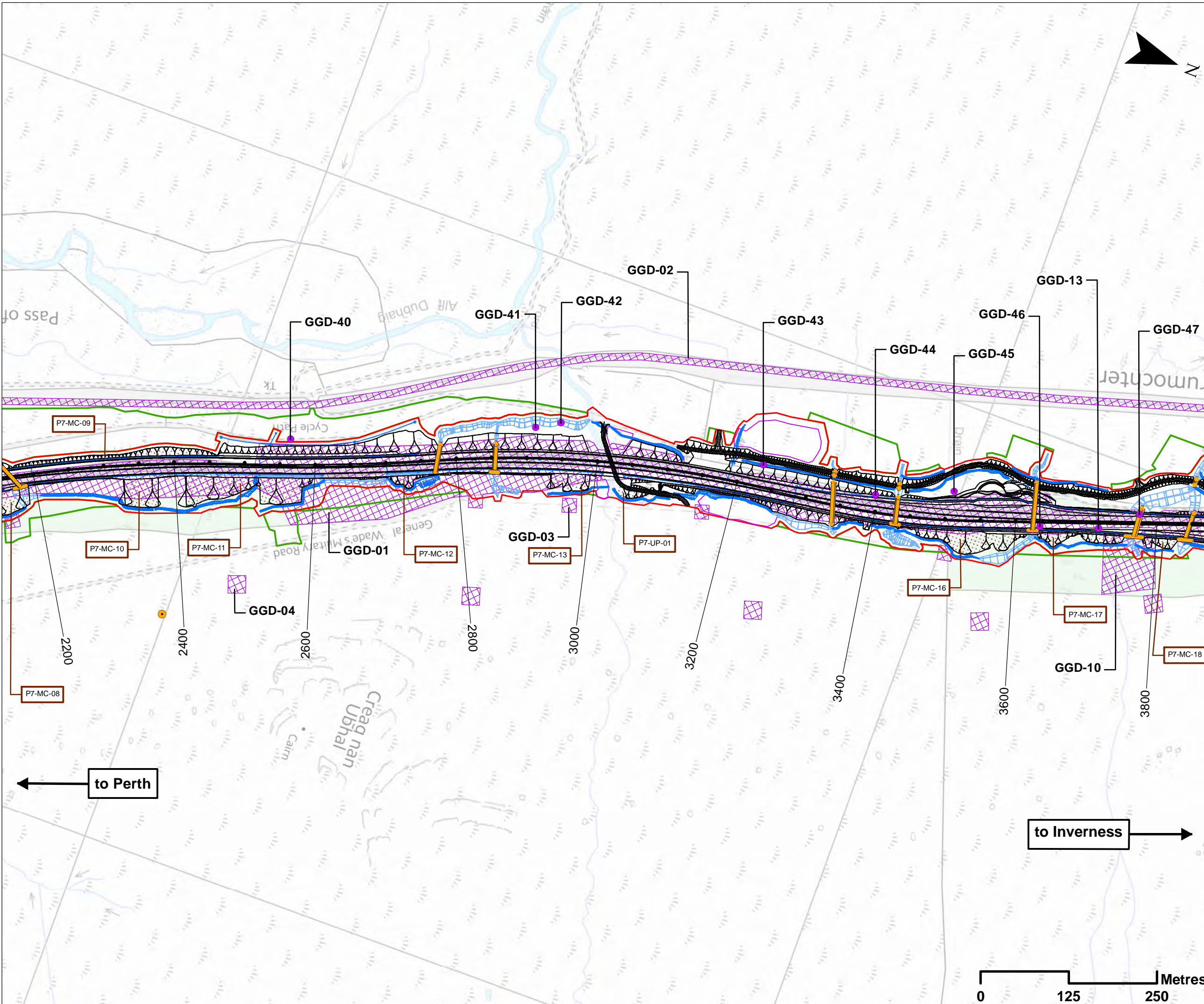
DATE: 21/11/2017
 PROJ: 495298

DWG: A9P07-CFJ-EGT-L_ML006_ZZ-DR-EN-0004

SHEET: 2 OF 7	REVISION: C01	SUITABILITY: A3
------------------	------------------	--------------------



Reproduced by permission of Ordnance Survey on behalf of HMSO. © Crown copyright and database right. All rights reserved. Transport Scotland Licence number 100046668, 2017



Legend

- Proposed Scheme Detail
- Watercourse Diversions
- Drainage
- Compensatory Storage Area
- Proposed Culverts
- Assessment Boundary - Permanent Works
- Assessment Boundary - Temporary Works
- Earthwork Cuttings and Widening
- P7 Earthwork Cutting ID
- Potential Contamination Sources - Polygon
- Potential Contamination Sources - Points
- GGD-00 Potential Contamination Sources Label
- Potential Radon Hazard

Notes:
Only excavations anticipated to be equal to or greater than 1.00m are specifically labelled

SCALE 1:5000

P03	S3	NOV 17	FINAL REVISIONS	HA	JF
P02	S3	SEPT 17	DESIGN UPDATE	HA	JF
P01	S3	JUN 17	DRAFT FOR COMMENT	HA	JF
REV	SUIT	DATE	DESCRIPTION	BY	APP

ch2m FAIRHURST

CH2MHILL Fairhurst JV
C/O: City Park 368 Alexandra Parade Glasgow G31 3AU
Tel + 44 (0) 141 552 2000 Fax +44 (0) 141 552 2525



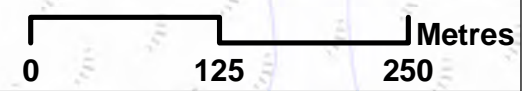
**PROJECT 7 GLEN GARRY TO DALWHINNIE EIA
ASSESSMENT PLAN
DRAWING 10.33
POTENTIAL CONTAMINATION SOURCES
chainage 2200m to 3800**

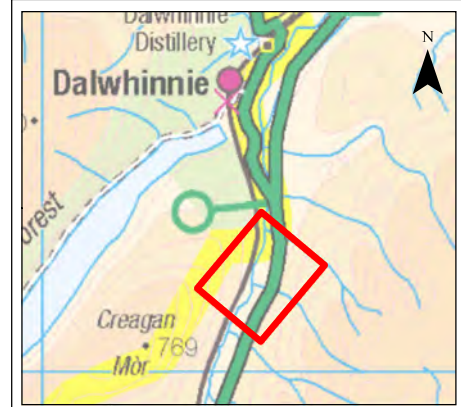
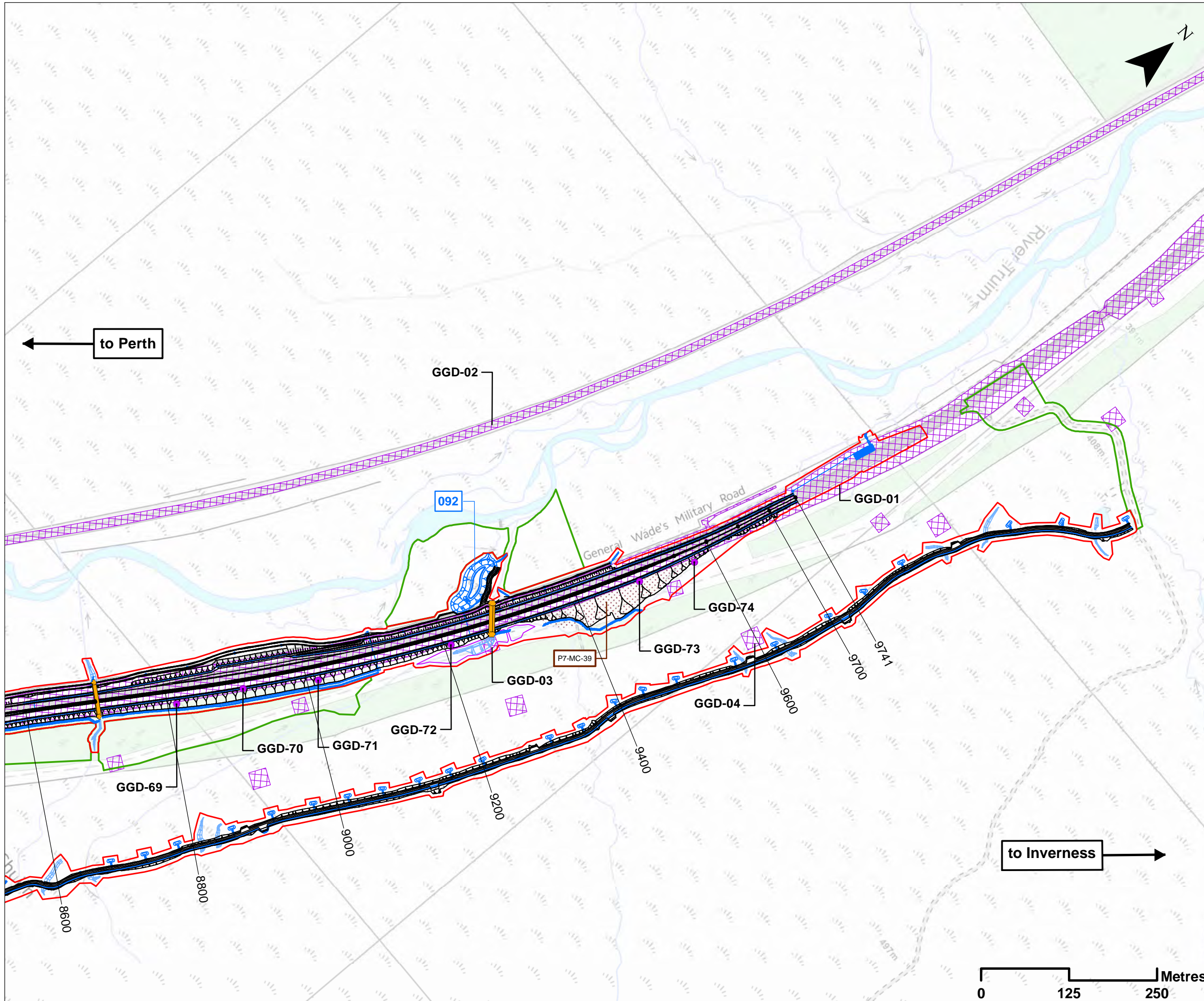
DESIGN: CK	DRAWN: HA	CHK: CK	APP: JF
---------------	--------------	------------	------------

DATE: 21/11/2017
PROJ: 495298

DWG: A9P07-CFJ-EGT-L_ML022_ZZ-DR-EN-0004

SHEET: 3 OF 7	REVISION: C01	SUITABILITY: A3
------------------	------------------	--------------------





- ### Legend
- Proposed Scheme Detail
 - Watercourse Diversions
 - Drainage
 - SuDS ID
 - Compensatory Storage Area
 - Proposed Culverts
 - Assessment Boundary - Permanent Works
 - Assessment Boundary - Temporary Works
 - Earthwork Cuttings and Widening
 - Earthwork Cutting ID
 - Potential Contamination Sources - Polygon
 - Potential Contamination Sources - Points
 - GGD-00** Potential Contamination Sources Label

Notes:
 Only excavations anticipated to be equal to or greater than 1.00m are specifically labelled

SCALE 1:5000

P03	S3	NOV 17	FINAL REVISIONS	HA	JF
P02	S3	SEPT 17	DESIGN UPDATE	HA	JF
P01	S3	JUN 17	DRAFT FOR COMMENT	HA	JF
REV	SUI	DATE	DESCRIPTION	BY	APP

ch2m: FAIRHURST
 CH2MHILL Fairhurst JV
 C/O: City Park 368 Alexandra Parade Glasgow G31 3AU
 Tel + 44 (0) 141 552 2000 Fax +44 (0) 141 552 2525



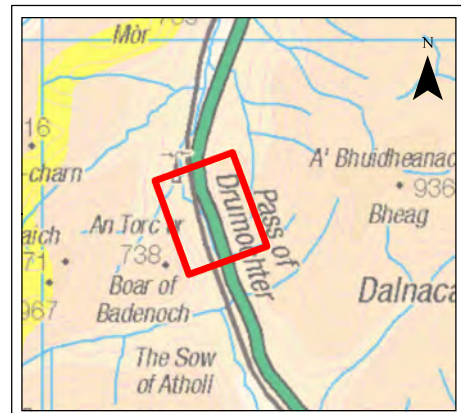
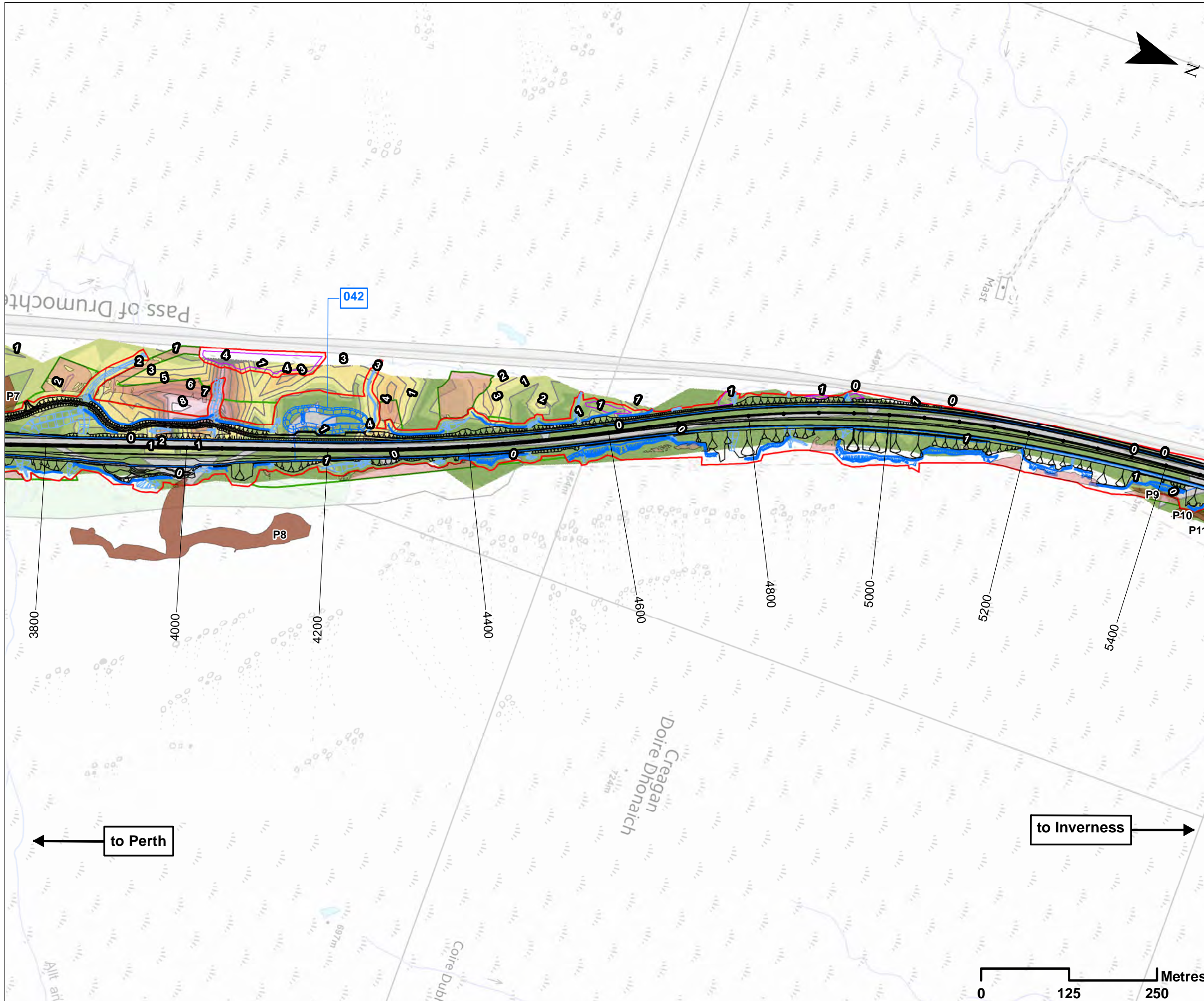
**PROJECT 7 GLEN GARRY TO DALWHINNIE EIA
 ASSESSMENT PLAN
 DRAWING 10.37
 POTENTIAL CONTAMINATION SOURCES
 chainage 8600m to 9741**

DESIGN: CK	DRAWN: HA	CHK: CK	APP: JF
---------------	--------------	------------	------------

DATE: 27/11/2017
 PROJ: 495298

DWG: A9P07-CFJ-EGT-L_ML086_ZZ-DR-EN-0004		
SHEET: 7 OF 7	REVISION: C01	SUITABILITY: A3

Document Path: \\glen\p07\Geospatial\Projects\A9_Dualling\EGT-L_ML086_ZZ-DR-EN-0004\Chapter_10_37.mxd



Legend

- Proposed Scheme Detail
- Watercourse Diversions
- Drainage
- SuDS ID
- Compensatory Storage
- Assessment Boundary - Permanent
- Assessment Boundary - Temporary
- Candidate Peat Re-use
- Provisional Temporary Storage

Peat Model:
Depth Contours (m bgl)

- No Peat
- 0.0 - 0.5
- 0.5 - 1
- 1 - 1.5
- 1.5 - 2
- 2 - 2.5
- 2.5 - 3
- 3 - 3.5
- 3.5 - 4
- 4 - 4.5
- 4.5 - 5
- 5 - 5.5
- 5.5 - 6
- 6 - 6.5
- 6.5 - 7
- 7 - 7.5
- 7.5 - 8
- > 8

Peat Contour Lines (1m bgl)

Peat Contour Labels (m bgl)

SCALE 1:5000

REV	SUJ	DATE	DESCRIPTION	HA	JF
P03	S3	NOV 17	FINAL REVISIONS	HA	JF
P02	S3	SEPT 17	DESIGN UPDATE	HA	JF
P01	S3	JUN 17	DRAFT FOR COMMENT	HA	JF

ch2m: FAIRHURST
 CH2MHILL Fairhurst JV
 C/O: City Park 368 Alexandra Parade Glasgow G31 3AU
 Tel + 44 (0) 141 552 2000 Fax +44 (0) 141 552 2525



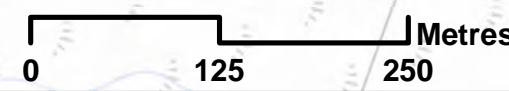
**PROJECT 7 GLEN GARRY TO DALWHINNIE EIA
 ASSESSMENT PLAN
 DRAWING 10.41
 PEAT MITIGATION AREAS
 chainage 3800 to 5400**

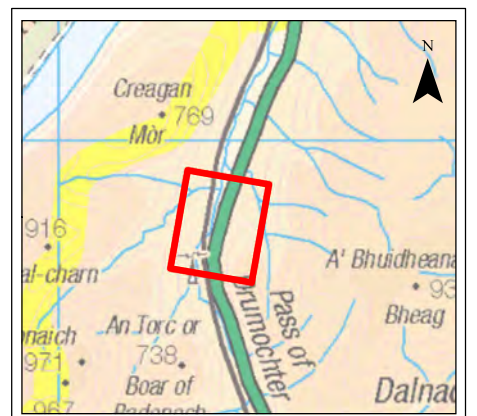
DESIGN: CK	DRAWN: HA	CHK: CK	APP: JF
---------------	--------------	------------	------------

DATE: 22/11/2017
 PROJ: 495298

DWG: A9P07-CFJ-EGT-L_ML038_ZZ-DR-EN-0005

SHEET: 4 OF 7	REVISION: C01	SUITABILITY: A3
------------------	------------------	--------------------





Legend

- Proposed Scheme Detail
- Drainage
- Watercourse Diversions
- 000 SuDS ID
- Compensatory Storage Area
- Assessment Boundary - Permanent Works
- Assessment Boundary - Temporary Works
- Candidate Peat Re-use Areas
- Provisional Temporary Storage Areas

Peat Model:
Depth Contours (m bgl)

- No Peat
- 0.0 - 0.5
- 0.5 - 1
- 1 - 1.5
- 1.5 - 2
- 2 - 2.5
- 2.5 - 3
- 3 - 3.5
- 3.5 - 4
- 4 - 4.5
- 4.5 - 5
- 5 - 5.5
- 5.5 - 6
- 6 - 6.5

— Peat Contour Lines (1m bgl)
1 Peat Contour Labels (m bgl)

SCALE 1:5000

P03	S3	NOV 17	FINAL REVISIONS	HA	JF
P02	S3	SEPT 17	DESIGN UPDATE	HA	JF
P01	S3	JUN 17	DRAFT FOR COMMENT	HA	JF
REV	SUIT	DATE	DESCRIPTION	BY	APP

ch2m FAIRHURST
 CH2MHILL Fairhurst JV
 C/O: City Park 368 Alexandra Parade Glasgow G31 3AU
 Tel + 44 (0) 141 552 2000 Fax +44 (0) 141 552 2525

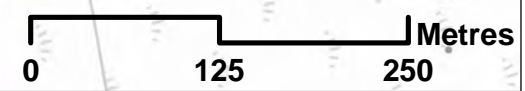


**PROJECT 7 GLEN GARRY TO DALWHINNIE EIA
 ASSESSMENT PLAN
 DRAWING 10.42
 PEAT MITIGATION AREAS
 chainage 5400 to 7000**

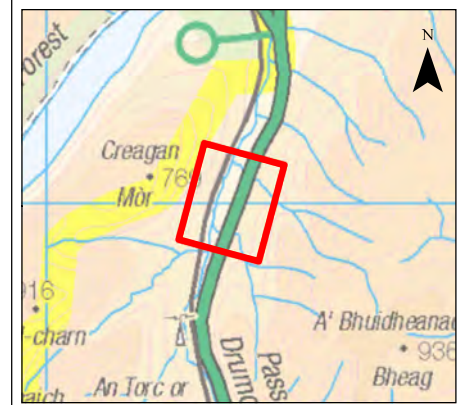
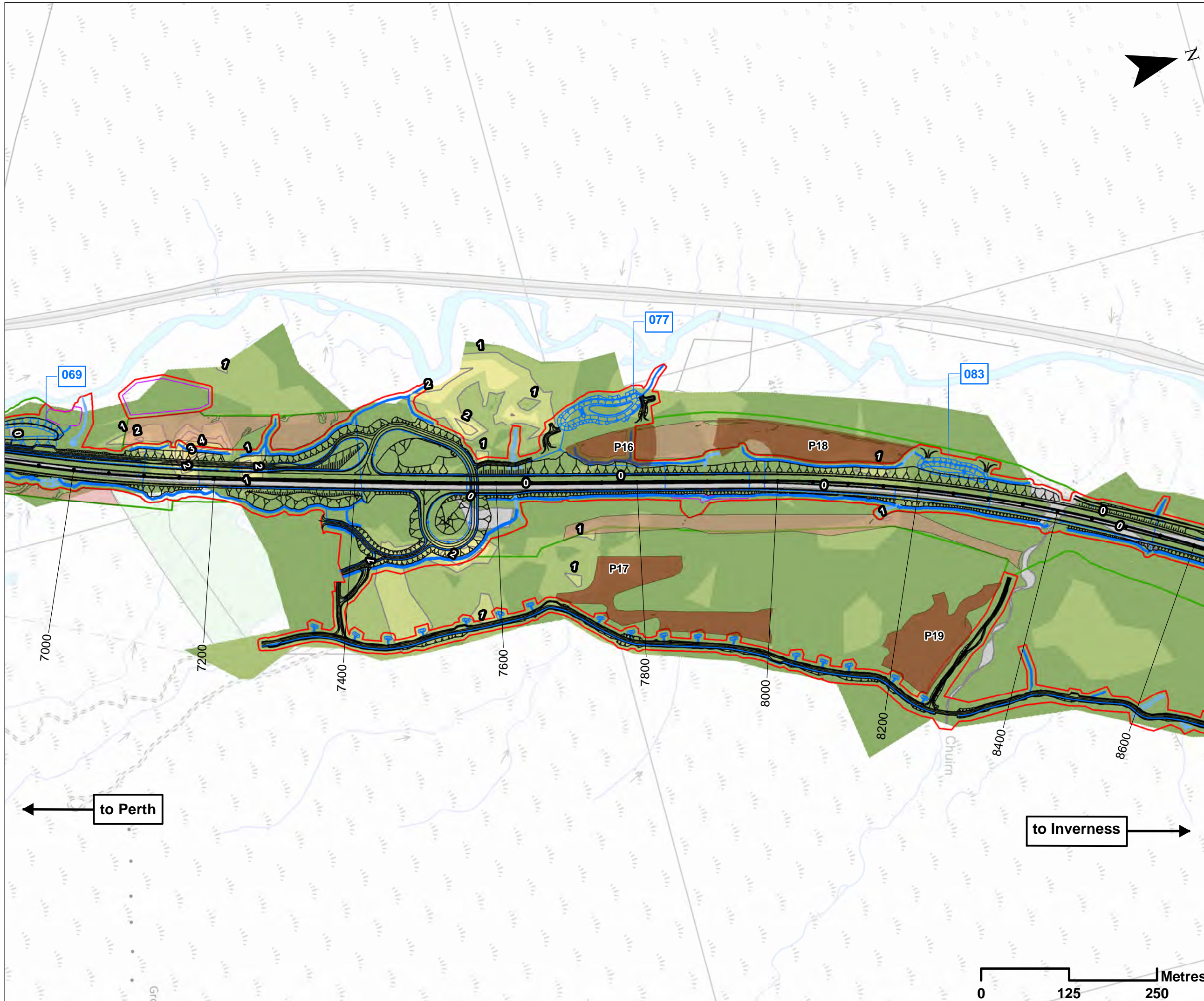
DESIGN: CK	DRAWN: HA	CHK: CK	APP: JF
---------------	--------------	------------	------------

DATE: 22/11/2017
 PROJ: 495298

DWG: A9P07-CFJ-EGT-L_ML054_ZZ-DR-EN-0005		
SHEET: 5 OF 7	REVISION: C01	SUITABILITY: A3



Document Path: \\g:\p07\Geospatial\Projects\A9_Dualling_EIA\GIS\BIM\B3\W_2_Mitigation\Project\10_Geology\Drawing_10.42.mxd



- Legend**
- Proposed Scheme Detail
 - Watercourse Diversions
 - Drainage
 - 000 SuDS ID
 - Compensatory Storage Area
 - Assessment Boundary - Permanent Works
 - Assessment Boundary - Temporary Works
 - Candidate Peat Re-use Areas
 - Provisional Temporary Storage Areas

- Peat Model: Depth Contours (m bgl)**
- No Peat
 - 0.0 - 0.5
 - 0.5 - 1
 - 1 - 1.5
 - 1.5 - 2
 - 2 - 2.5
 - 2.5 - 3
 - 3 - 3.5
 - 3.5 - 4
 - 4 - 4.5
- Peat Contour Lines (1m bgl)
- 1 Peat Contour Labels (m bgl)

SCALE 1:5000

P03	S3	NOV 17	FINAL REVISIONS	HA	JF
P02	S3	SEPT 17	DESIGN UPDATE	HA	JF
P01	S3	JUN 17	DRAFT FOR COMMENT	HA	JF
REV	SUI	DATE	DESCRIPTION	BY	APP

ch2m: FAIRHURST
 CH2MHILL Fairhurst JV
 C/O: City Park 368 Alexandra Parade Glasgow G31 3AU
 Tel + 44 (0) 141 552 2000 Fax +44 (0) 141 552 2525

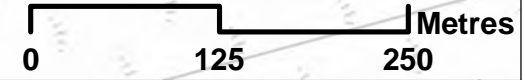


**PROJECT 7 GLEN GARRY TO DALWHINNIE EIA
 ASSESSMENT PLAN
 DRAWING 10.43
 PEAT MITIGATION AREAS
 chainage 7000 to 8600**

DESIGN: CK	DRAWN: HA	CHK: CK	APP: JF
---------------	--------------	------------	------------

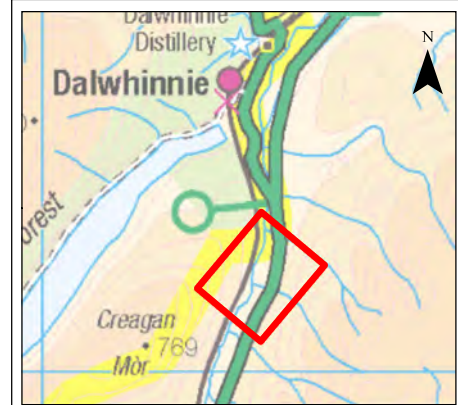
DATE: 27/11/2017
 PROJ: 495298
 DWG: A9P07-CFJ-EGT-L_ML070_ZZ-DR-EN-0005

SHEET: 6 OF 7	REVISION: C01	SUITABILITY: A3
------------------	------------------	--------------------



Reproduced by permission of Ordnance Survey on behalf of HMSO. © Crown copyright and database right. All rights reserved. Transport Scotland Licence number 100046668, 2017

Document Path: \\g:\p07\Geospatial\Projects\A9_Dualling\E_GIS\DMR\B3\2_ML070\Chapter_10_Geology\Drawing_10_43.mxd



Legend

- Proposed Scheme Detail
 - Watercourse Diversions
 - Drainage
 - 000 SuDS ID
 - Compensatory Storage Area
 - Assessment Boundary - Permanent Works
 - Assessment Boundary - Temporary Works
 - Candidate Peat Re-use Areas
 - Provisional Temporary Storage Areas
- Peat Model:**
Depth Contours (m bgl)
- No Peat
 - 0.0 - 0.5
 - 0.5 - 1
 - 1 - 1.5
 - 1.5 - 2
 - 2 - 2.5
- Peat Contour Lines (1m bgl)
- 1 Peat Contour Labels (m bgl)

SCALE 1:5000

P03	S3	NOV 17	FINAL REVISIONS	HA	JF
P02	S3	SEPT 17	DESIGN UPDATE	HA	JF
P01	S3	JUN 17	DRAFT FOR COMMENT	HA	JF
REV	SUI	DATE	DESCRIPTION	BY	APP



CH2MHILL Fairhurst JV
 C/O: City Park 368 Alexandra Parade Glasgow G31 3AU
 Tel + 44 (0) 141 552 2000 Fax +44 (0) 141 552 2525



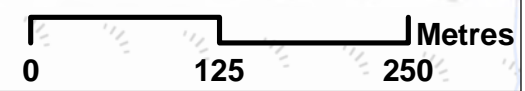
**PROJECT 7 GLEN GARRY TO DALWHINNIE EIA
 ASSESSMENT PLAN
 DRAWING 10.44
 PEAT MITIGATION AREAS
 chainage 8600 to 9741**

DESIGN: CK	DRAWN: HA	CHK: CK	APP: JF
---------------	--------------	------------	------------

DATE: 27/11/2017
 PROJ: 495298

DWG: A9P07-CFJ-EGT-L_ML086_ZZ-DR-EN-0005

SHEET: 7 OF 7	REVISION: C01	SUITABILITY: A3
------------------	------------------	--------------------



Document Path: \\g:\p07\Geospatial\Projects\A9_Dualling\10_GlenGarry\Chapter_10_Geology\Drawing_10_44.mxd