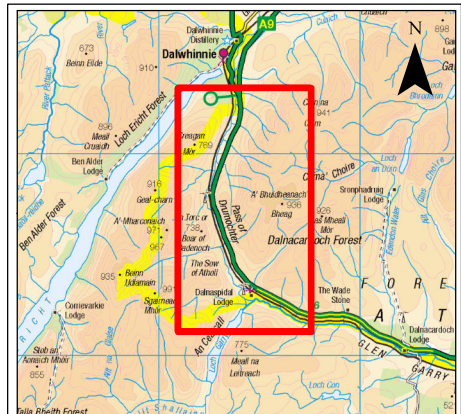
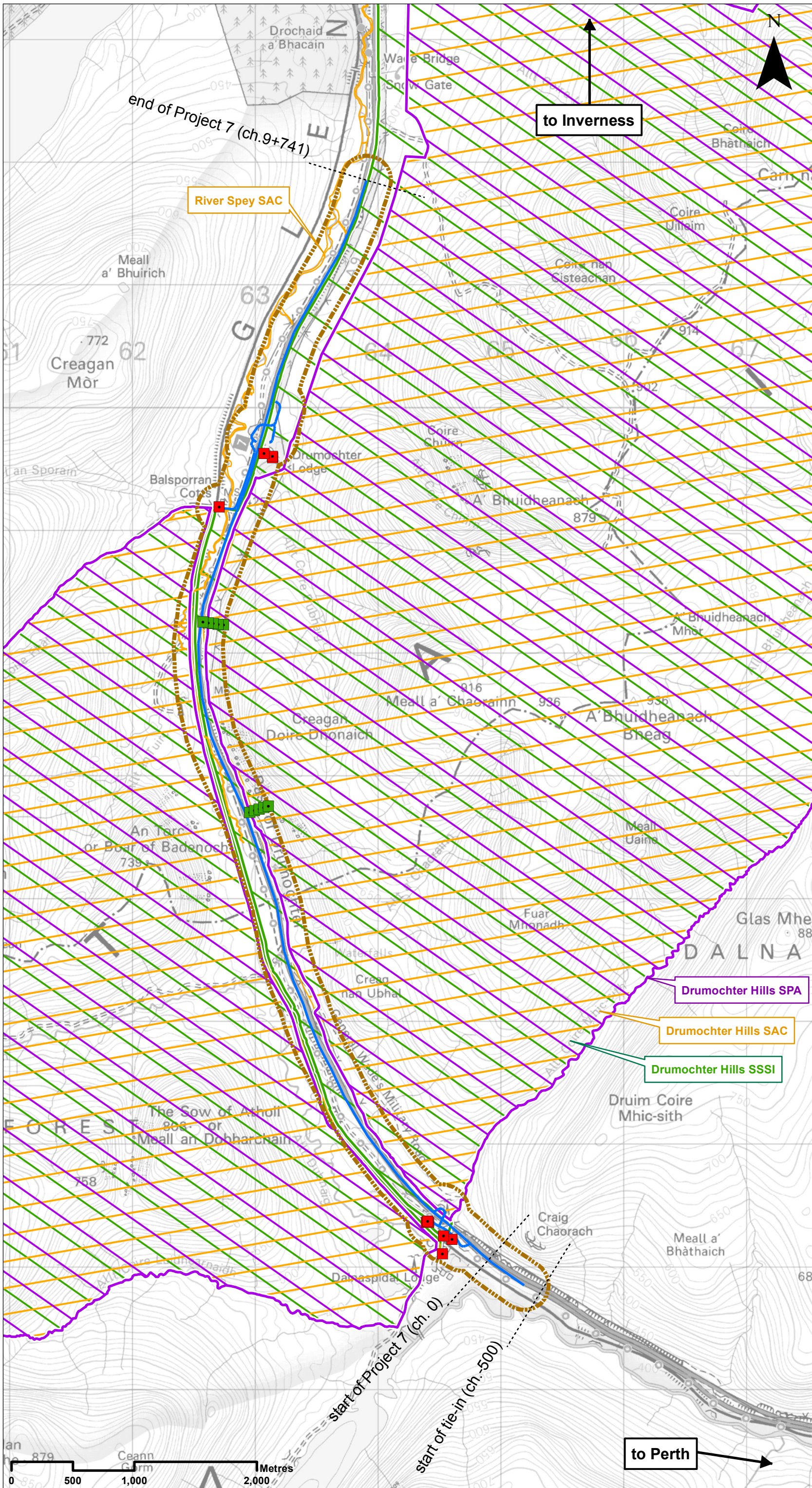


Air Quality

Drawing No.	Drawing Type	Drawing Title	Projectwise Drawing Reference	Software
16.1	BASELINE PLAN	LOCAL AIR QUALITY ASSESSMENT AREAS AND RECEPTORS	A9P07-CFJ-EAQ-L_MLZZZ_ZZ-DR-EN-0001	GIS
16.2	BASELINE PLAN	CONSTRUCTION DUST IMPACT AREA	A9P07-CFJ-EAQ-L_MLZZZ_ZZ-DR-EN-0002	GIS
16.3	ASSESSMENT PLAN	AIR QUALITY RECEPTORS (chainage -500 to chainage 1000)	A9P07-CFJ-EAQ-L_ML000_ZZ-DR-EN-0001	GIS
16.4	ASSESSMENT PLAN	ECOLOGICAL RECEPTORS (chainage 3600 to chainage 5000)	A9P07-CFJ-EAQ-L_ML036_ZZ-DR-EN-0001	GIS
16.5	ASSESSMENT PLAN	ECOLOGICAL RECEPTORS (chainage 5200 to chainage 6800)	A9P07-CFJ-EAQ-L_ML052_ZZ-DR-EN-0001	GIS
16.6	ASSESSMENT PLAN	AIR QUALITY RECEPTORS (chainage 6400 to chainage 8000)	A9P07-CFJ-EAQ-L_ML064_ZZ-DR-EN-0001	GIS



- ### Legend
- Proposed Scheme Extents
 - Affected Road Network
 - Special Protection Area (SPA)
 - Special Area of Conservation (SAC)
 - Site of Special Scientific Interest (SSSI)
- ### Air Quality:
- Air Quality Study Area
 - Air Quality Receptor
 - Air Quality Ecological Receptor

SCALE 1:30000

P03	S3	NOV 17	FINAL REVISIONS	HA	JF
P02	S3	SEPT 17	DESIGN UPDATE	HA	JF
P01	S3	JUN 17	DRAFT FOR COMMENT	HA	JF
REV	SUIT	DATE	DESCRIPTION	BY	APP

ch2m FAIRHURST
 CH2MHILL Fairhurst JV
 CO: City Park 368 Alexandra Parade Glasgow G31 3AU
 Tel + 44 (0) 141 552 2000 Fax +44 (0) 141 552 2525



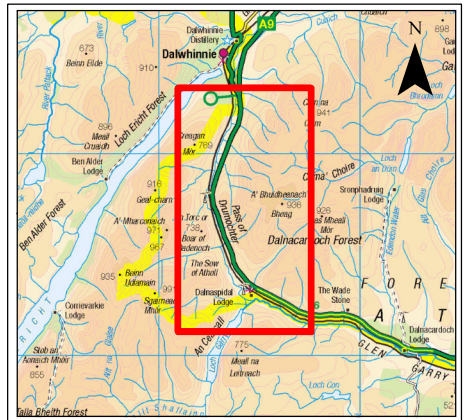
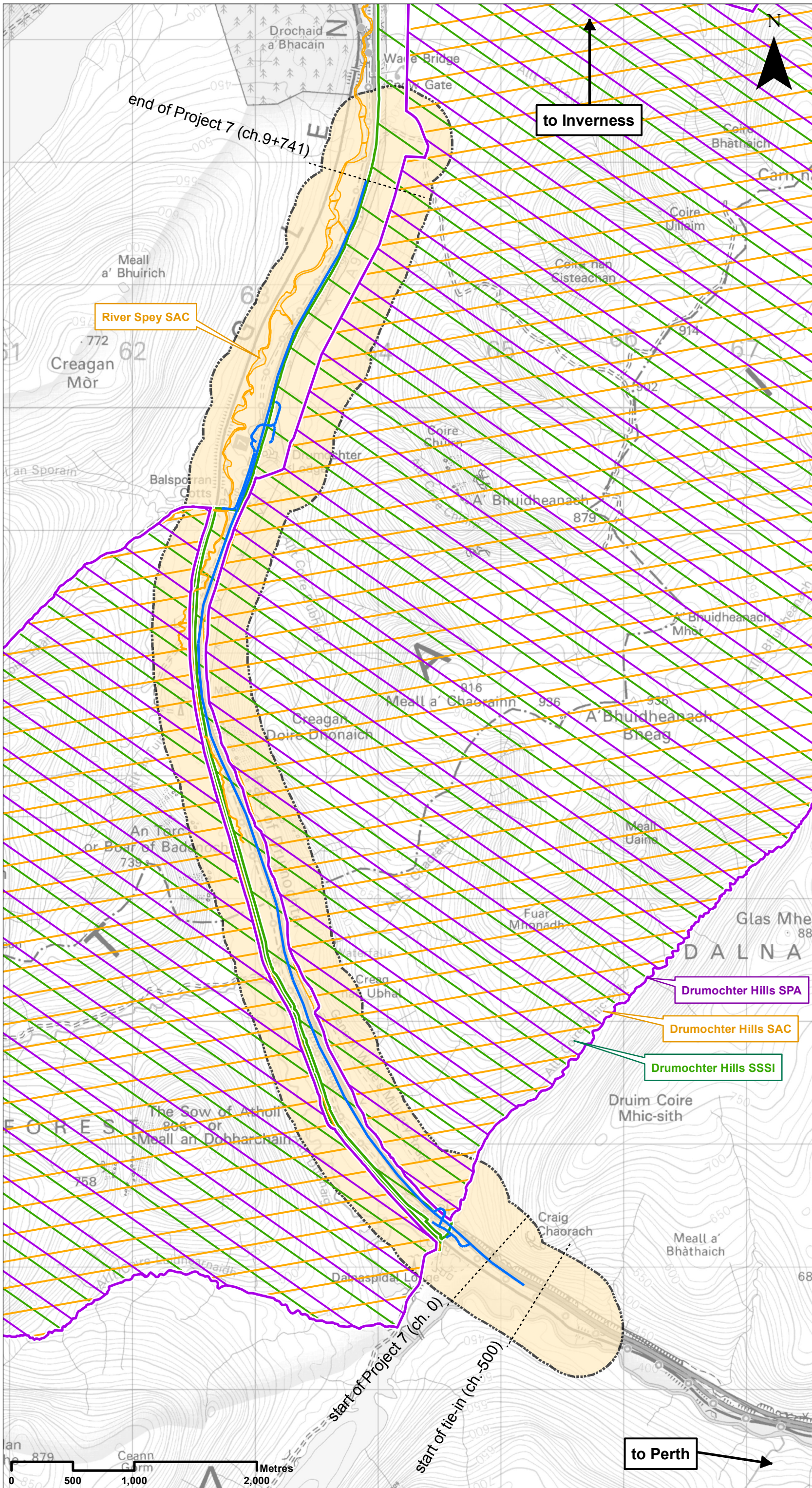
**PROJECT 7 GLEN GARRY TO DALWHINNIE EIA
 BASELINE PLAN
 DRAWING 16.1
 LOCAL AIR QUALITY ASSESSMENT AREAS
 AND RECEPTORS**

DESIGN: CT	DRAWN: HA	CHK: GG	APP: JF
---------------	--------------	------------	------------

DATE: 17/11/2017

PROJ: 495298
 DWG: A9P07-CF3-EAQ-L_M_ZZZ_ZZ-DR-EN-0001

SHEET: 1 of 1	REVISION: C01	SUITABILITY: A3
------------------	------------------	--------------------



Legend

- Proposed Scheme Extents
- Affected Road Network
- Special Protection Area (SPA)
- Special Area of Conservation (SAC)
- Site of Special Scientific Interest (SSSI)
- Air Quality:**
- Construction Dust Impact Area

SCALE 1:30000

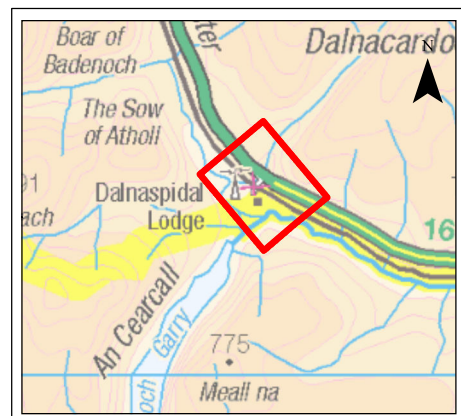
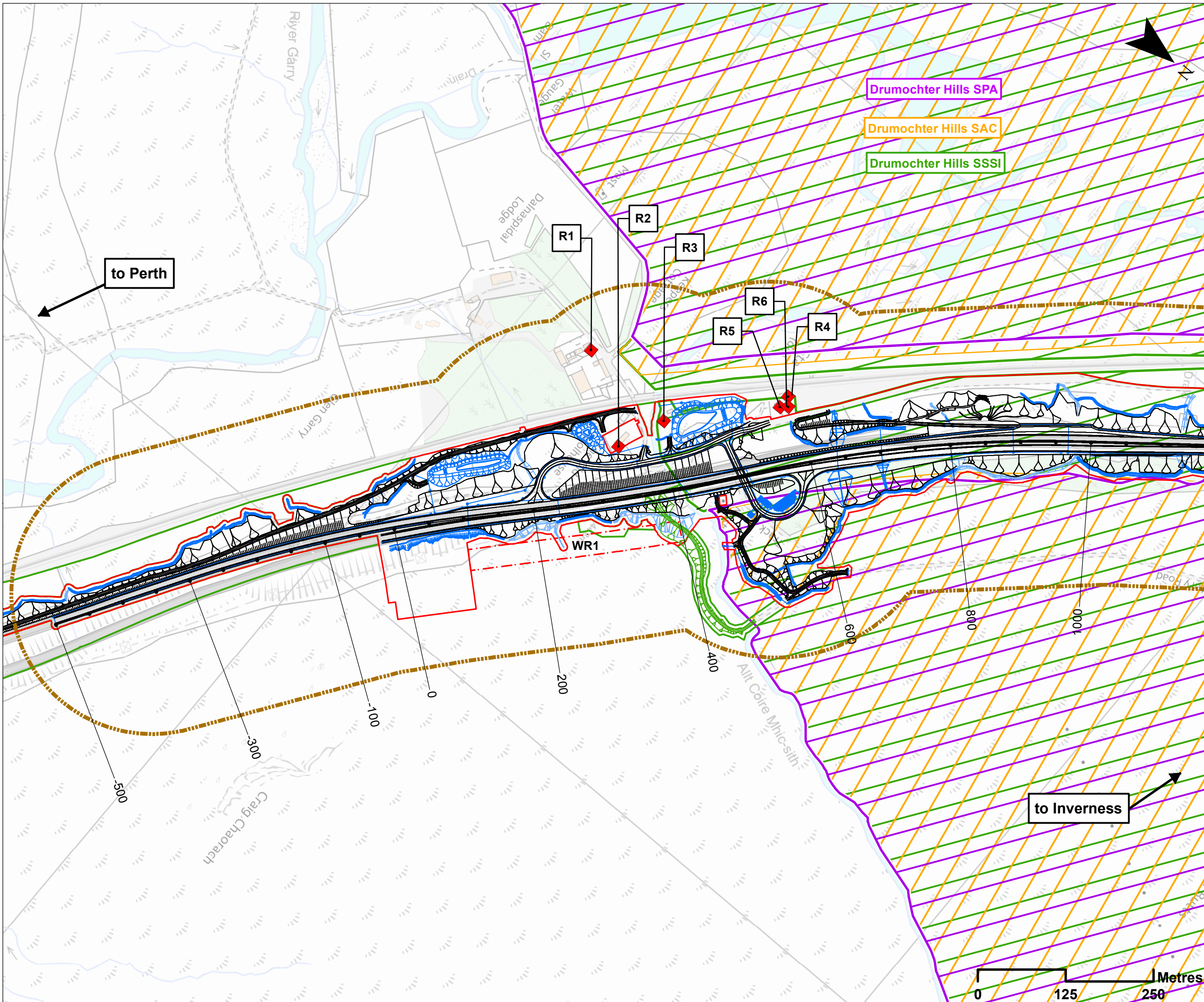
P03	S3	NOV 17	FINAL REVISIONS	HA	JF
P02	S3	SEPT 17	DESIGN UPDATE	HA	JF
P01	S3	JUN 17	DRAFT FOR COMMENT	HA	JF
REV	SUIT	DATE	DESCRIPTION	BY	APP

ch2m FAIRHURST
 CH2MHILL Fairhurst JV
 CO: City Park 368 Alexandra Parade Glasgow G31 3AU
 Tel + 44 (0) 141 552 2000 Fax +44 (0) 141 552 2525



**PROJECT 7 GLEN GARRY TO DALWHINNIE EIA
 BASELINE PLAN
 DRAWING 16.2
 CONSTRUCTION DUST IMPACT AREA**

DESIGN: CT	DRAWN: HA	CHK: GG	APP: JF
DATE: 17/11/2017			
PROJ: 495298			
DWG: A9P07-CF3-EAQ-L_M_ZZZ_ZZ-DR-EN-0002			
SHEET: 1 of 1	REVISION: C01	SUITABILITY: A3	



Legend

- Proposed Scheme Detail
 - Dalnacardoch Temporary Construction Access
 - Watercourse Diversions
 - Drainage
 - Compensatory Storage Area
 - Assessment Boundary - Permanent Works
 - Assessment Boundary - Temporary Works
 - WR 30m Winter Resilience Tree Belt (Indicative)
 - Special Protection Area (SPA)
 - Special Area of Conservation (SAC)
 - Site of Special Scientific Interest (SSSI)
- Air Quality:**
- Air Quality Study Area
 - Air Quality Receptor
 - R1 Receptor ID

SCALE 1:5000

P03	S3	NOV 17	FINAL REVISIONS	HA	JF
P02	S3	SEPT 17	DESIGN UPDATE	HA	JF
P01	S3	JUN 17	DRAFT FOR COMMENT	HA	JF
REV	SUIT	DATE	DESCRIPTION	BY	APP

ch2m: FAIRHURST
 CH2MHILL Fairhurst JV
 C/O: City Park 368 Alexandra Parade Glasgow G31 3AU
 Tel + 44 (0) 141 552 2000 Fax +44 (0) 141 552 2525



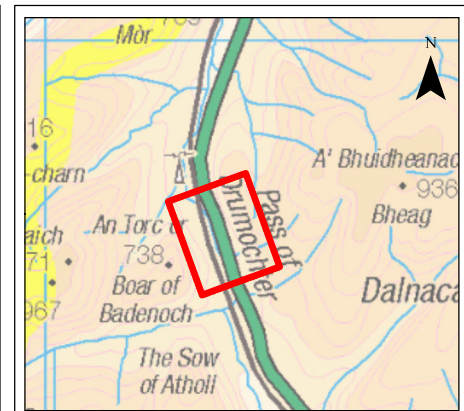
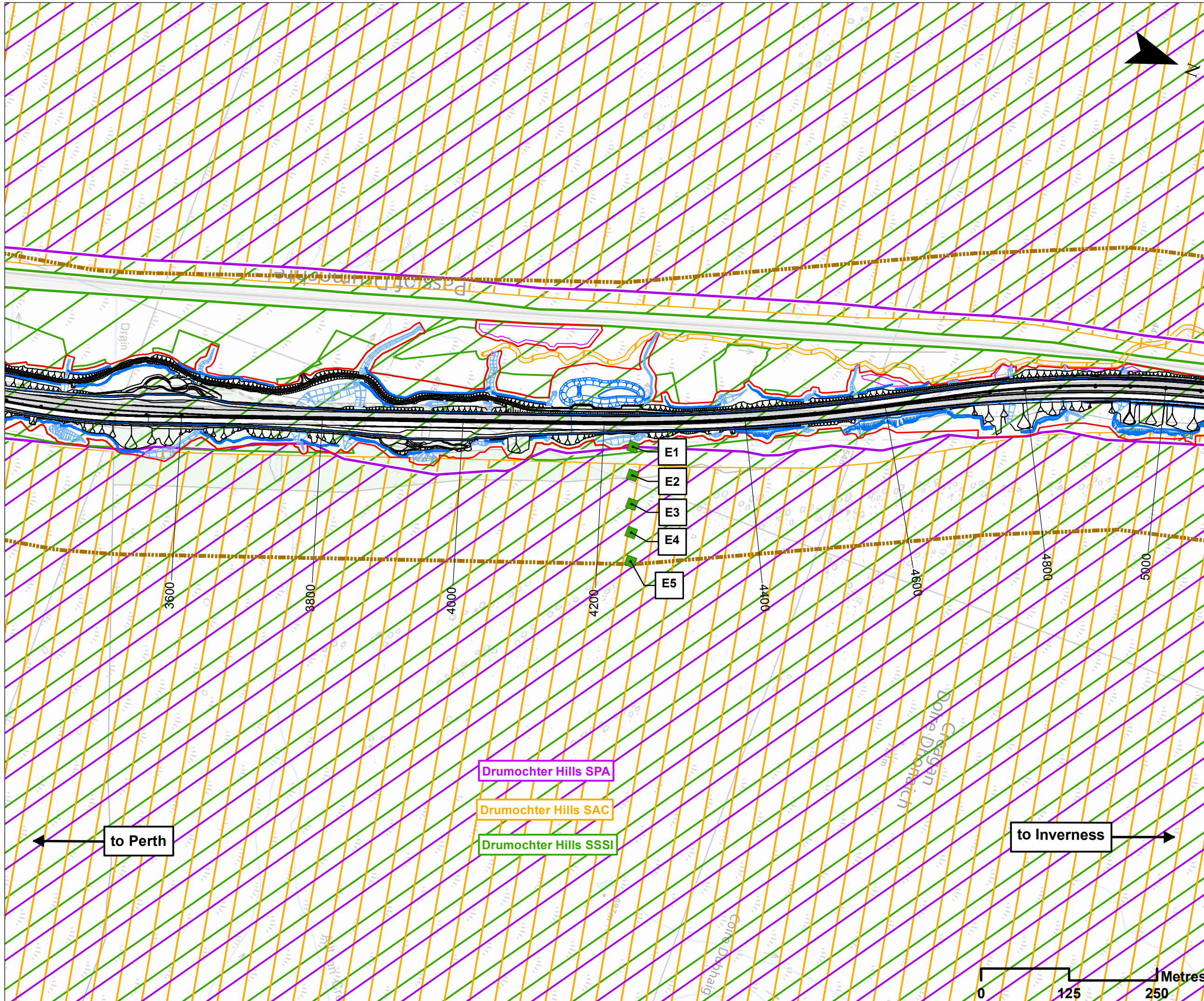
**PROJECT 7 GLEN GARRY TO DALWHINNIE EIA
 ASSESSMENT PLAN
 DRAWING 16.3
 AIR QUALITY RECEPTORS
 chainage -500 to 1000**

DESIGN: CT	DRAWN: HA	CHK: GG	APP: JF
---------------	--------------	------------	------------

DATE: 21/11/2017
 PROJ: 495298

DWG: A9P07-CFJ-EAQ-L_ML000_ZZ-DR-EN-0001		
SHEET: 1 OF 4	REVISION: C01	SUITABILITY: A3

Document Path: \\glen\p07\Geospatial\Projects\A9_Dualling\GIS\DMRS\2_2_Mods\p07\Chapter_16_Air Quality\DRAWING_16.3.mxd



Legend

- Proposed Scheme Detail
- Watercourse Diversions
- Drainage
- Compensatory Storage Area
- Assessment Boundary - Permanent Works
- Assessment Boundary - Temporary Works
- ▨ Special Protection Area (SPA)
- ▨ Special Area of Conservation (SAC)
- ▨ Site of Special Scientific Interest (SSSI)
- ▭ Air Quality Study Area
- Air Quality Ecological Receptor
- R1 Receptor ID

Air Quality:

SCALE 1:5000

P03	S3	NOV 17	FINAL REVISIONS	HA	JF
P02	S3	SEPT 17	DESIGN UPDATE	HA	JF
P01	S3	JUN 17	DRAFT FOR COMMENT	HA	JF
REV	SUIT	DATE	DESCRIPTION	BY	APP

ch2m: FAIRHURST
 CH2MHILL Fairhurst JV
 C/O: City Park 368 Alexandra Parade Glasgow G31 3AU
 Tel + 44 (0) 141 552 2000 Fax +44 (0) 141 552 2525

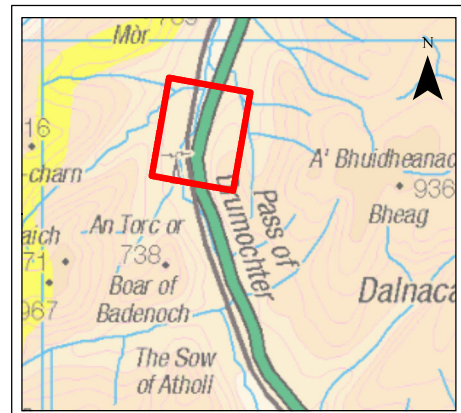
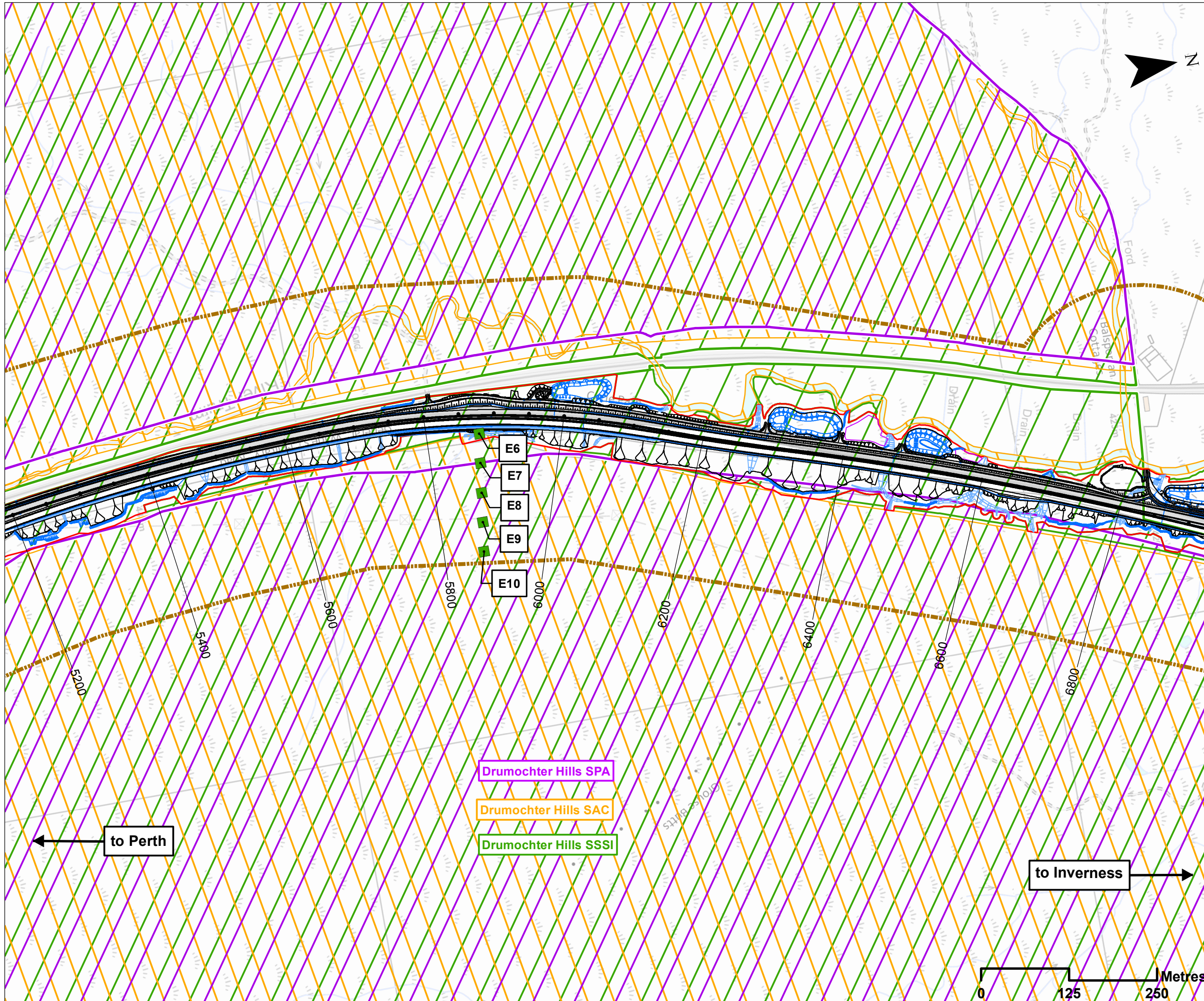


PROJECT 7 GLEN GARRY TO DALWHINNIE EIA
ASSESSMENT PLAN
DRAWING 16.4
ECOLOGICAL RECEPTORS
chainage 3600 to 5000

DESIGN: CT	DRAWN: HA	CHK: GG	APP: JF
---------------	--------------	------------	------------

DATE: 21/11/2017
 PROJ: 495298

DWG: A9P07-CFJ-EAQ-L_ML036_ZZ-DR-EN-0001		
SHEET: 2 OF 4	REVISION: C01	SUITABILITY: A3



Legend

- Proposed Scheme Detail
- Watercourse Diversions
- Drainage
- Compensatory Storage Area
- Assessment Boundary - Permanent Works
- Assessment Boundary - Temporary Works
- Special Protection Area (SPA)
- Special Area of Conservation (SAC)
- Site of Special Scientific Interest (SSSI)
- Air Quality Study Area
- Air Quality Ecological Receptor
- Receptor ID

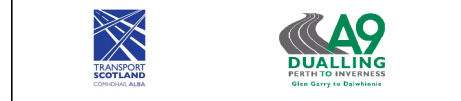
Air Quality:

- Air Quality Study Area
- Air Quality Ecological Receptor
- Receptor ID

SCALE 1:5000

REV	SUJ	DATE	DESCRIPTION	BY	APP
P03	S3	NOV 17	FINAL REVISIONS	HA	JF
P02	S3	SEPT 17	DESIGN UPDATE	HA	JF
P01	S3	JUN 17	DRAFT FOR COMMENT	HA	JF

ch2m: FAIRHURST
 CH2MHILL Fairhurst JV
 C/O: City Park 368 Alexandra Parade Glasgow G31 3AU
 Tel + 44 (0) 141 552 2000 Fax +44 (0) 141 552 2525



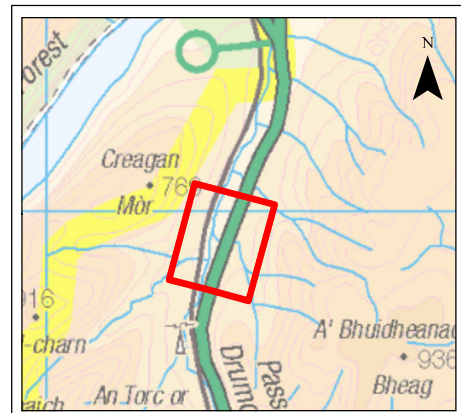
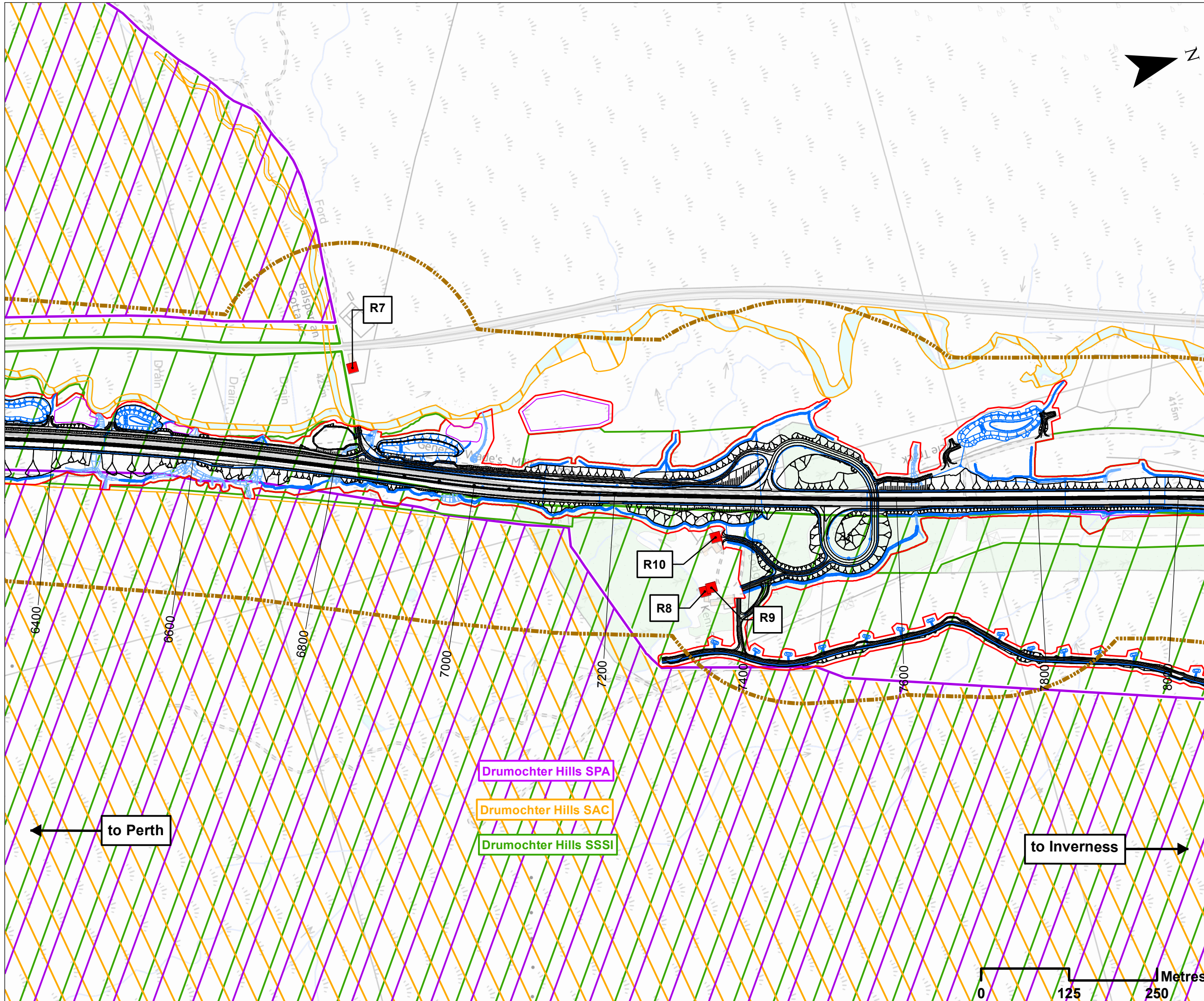
**PROJECT 7 GLEN GARRY TO DALWHINNIE EIA
 ASSESSMENT PLAN
 DRAWING 16.5
 ECOLOGICAL RECEPTORS
 chainage 5200 to 6800**

DESIGN: CT	DRAWN: HA	CHK: GG	APP: JF
---------------	--------------	------------	------------

DATE: 21/11/2017
 PROJ: 495298

DWG: A9P07-CFJ-EAQ-L_ML052_ZZ-DR-EN-0001		
SHEET: 3 OF 4	REVISION: C01	SUITABILITY: A3





Legend

- Proposed Scheme Detail
- Watercourse Diversions
- Drainage
- Compensatory Storage Area
- Assessment Boundary - Permanent Works
- Assessment Boundary - Temporary Works
- ▨ Special Protection Area (SPA)
- ▨ Special Area of Conservation (SAC)
- ▨ Site of Special Scientific Interest (SSSI)
- ▭ Air Quality Study Area
- Air Quality Receptor
- R1 Receptor ID

SCALE 1:5000

P03	S3	NOV 17	FINAL REVISIONS	HA	JF
P02	S3	SEPT 17	DESIGN UPDATE	HA	JF
P01	S3	JUN 17	DRAFT FOR COMMENT	HA	JF
REV	SUIT	DATE	DESCRIPTION	BY	APP

ch2m: FAIRHURST
 CH2MHILL Fairhurst JV
 C/O: City Park 368 Alexandra Parade Glasgow G31 3AU
 Tel + 44 (0) 141 552 2000 Fax +44 (0) 141 552 2525



**PROJECT 7 GLEN GARRY TO DALWHINNIE EIA
 ASSESSMENT PLAN
 DRAWING 16.6
 AIR QUALITY RECEPTORS
 chainage 6400 to 8000**

DESIGN: CT	DRAWN: HA	CHK: GG	APP: JF
---------------	--------------	------------	------------

DATE: 21/11/2017
 PROJ: 495298

DWG: A9P07-CFJ-EAQ-L_ML064_ZZ-DR-EN-0001		
SHEET: 4 OF 4	REVISION: C01	SUITABILITY: A3



Document Path: \\glen\p07\Geospatial\Projects\A9_Dualling_COS\BMS\2_Maps\PT\Chapter_16_Air Quality\DRAWING_16.6.mxd