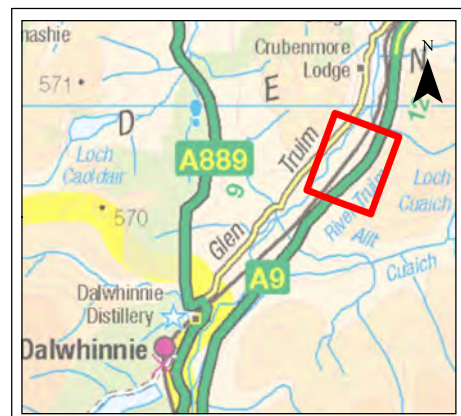
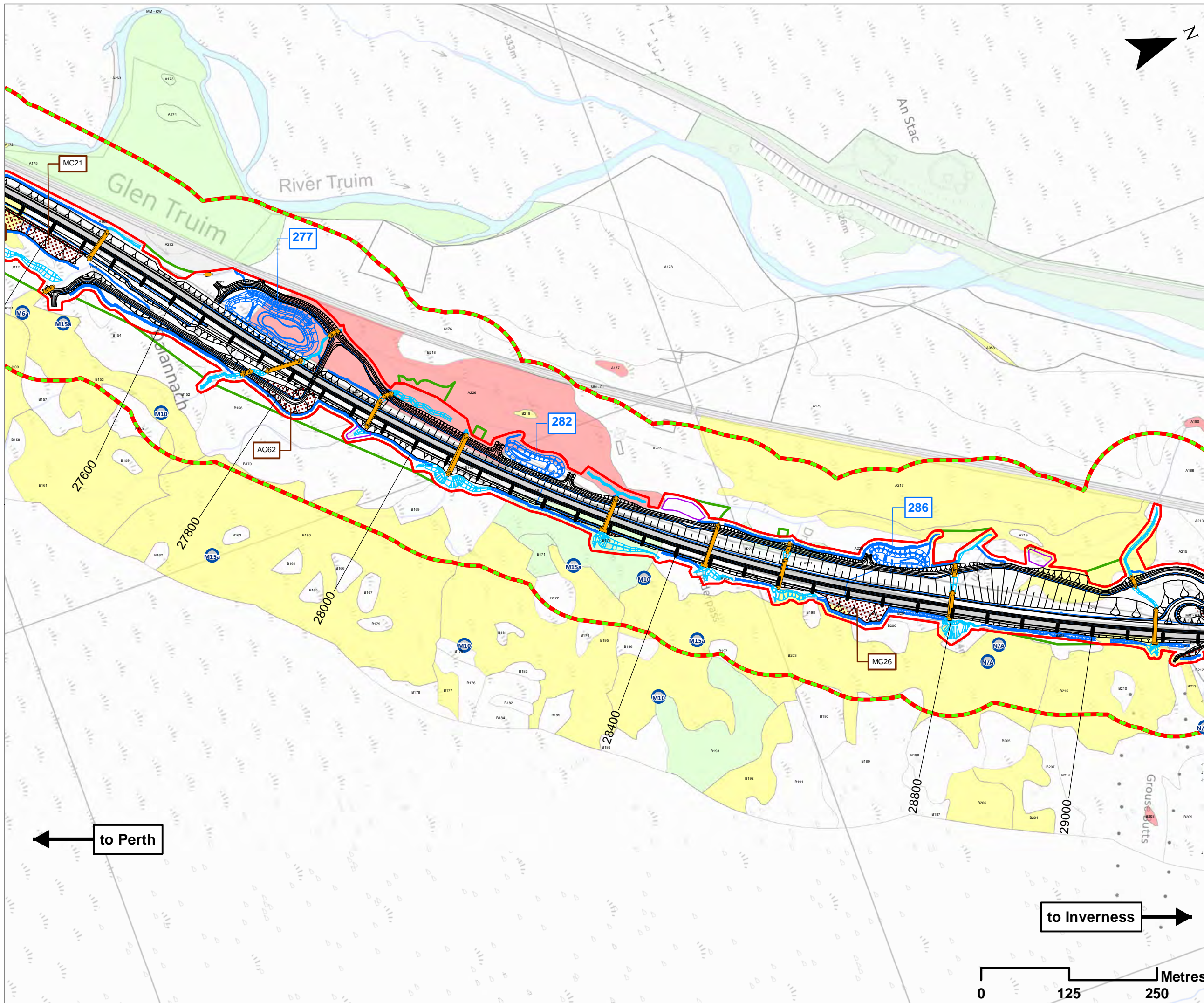


| Drawing No. | Drawing Type | Drawing Title | Projectwise Drawing Reference | Software |
|-------------|-----------------|---|-------------------------------------|----------|
| 10.27 | ASSESSMENT PLAN | GROUNDWATER ABSTRACTIONS, PRIVATE WATER SUPPLIES AND GROUNDWATER DEPENDENT TERRESTRIAL ECOSYSTEMS chainage 27,600 to 29,000 | A9P08-CFJ-EGT-J_ML276_ZZ-DR-EN-0002 | GIS |
| 10.28 | ASSESSMENT PLAN | GROUNDWATER ABSTRACTIONS, PRIVATE WATER SUPPLIES AND GROUNDWATER DEPENDENT TERRESTRIAL ECOSYSTEMS chainage 29,000 to 30,400 | A9P08-CFJ-EGT-J_ML290_ZZ-DR-EN-0002 | GIS |
| 10.29 | ASSESSMENT PLAN | GROUNDWATER ABSTRACTIONS, PRIVATE WATER SUPPLIES AND GROUNDWATER DEPENDENT TERRESTRIAL ECOSYSTEMS chainage 30,000 to 31,050 | A9P08-CFJ-EGT-J_ML300_ZZ-DR-EN-0001 | GIS |
| 10.30 | ASSESSMENT PLAN | POTENTIAL CONTAMINATION SOURCES chainage 0 to 20,000 | A9P08-CFJ-EGT-J_ML000_ZZ-DR-EN-0004 | GIS |
| 10.31 | ASSESSMENT PLAN | POTENTIAL CONTAMINATION SOURCES chainage 20,000 to 21,400 | A9P08-CFJ-EGT-J_ML200_ZZ-DR-EN-0003 | GIS |
| 10.32 | ASSESSMENT PLAN | POTENTIAL CONTAMINATION SOURCES chainage 21,400 to 23,000 | A9P08-CFJ-EGT-J_ML214_ZZ-DR-EN-0003 | GIS |
| 10.33 | ASSESSMENT PLAN | POTENTIAL CONTAMINATION SOURCES chainage 23,000 to 24,600 | A9P08-CFJ-EGT-J_ML230_ZZ-DR-EN-0003 | GIS |
| 10.34 | ASSESSMENT PLAN | POTENTIAL CONTAMINATION SOURCES chainage 24,600 to 26,000 | A9P08-CFJ-EGT-J_ML246_ZZ-DR-EN-0003 | GIS |
| 10.35 | ASSESSMENT PLAN | POTENTIAL CONTAMINATION SOURCES chainage 26,000 to 27,600 | A9P08-CFJ-EGT-J_ML260_ZZ-DR-EN-0003 | GIS |
| 10.36 | ASSESSMENT PLAN | POTENTIAL CONTAMINATION SOURCES chainage 27,600 to 29,000 | A9P08-CFJ-EGT-J_ML276_ZZ-DR-EN-0003 | GIS |
| 10.37 | ASSESSMENT PLAN | POTENTIAL CONTAMINATION SOURCES chainage 29,000 to 30,400 | A9P08-CFJ-EGT-J_ML290_ZZ-DR-EN-0003 | GIS |
| 10.38 | ASSESSMENT PLAN | POTENTIAL CONTAMINATION SOURCES chainage. 30,000 to 31,050 | A9P08-CFJ-EGT-J_ML300_ZZ-DR-EN-0002 | GIS |
| 10.39 | ASSESSMENT PLAN | PEAT MITIGATION AREAS chainage 0 to 20000 | A9P08-CFJ-EGT-J_ML000_ZZ-DR-EN-0005 | GIS |
| 10.40 | ASSESSMENT PLAN | PEAT MITIGATION AREAS chainage 20000 to 21400 | A9P08-CFJ-EGT-J_ML200_ZZ-DR-EN-0004 | GIS |
| 10.41 | ASSESSMENT PLAN | PEAT MITIGATION AREAS chainage 21400 to 23000 | A9P08-CFJ-EGT-J_ML214_ZZ-DR-EN-0004 | GIS |
| 10.42 | ASSESSMENT PLAN | PEAT MITIGATION AREAS chainage 23000 to 24600 | A9P08-CFJ-EGT-J_ML230_ZZ-DR-EN-0004 | GIS |
| 10.43 | ASSESSMENT PLAN | PEAT MITIGATION AREAS chainage 24600 to 26000 | A9P08-CFJ-EGT-J_ML246_ZZ-DR-EN-0004 | GIS |
| 10.44 | ASSESSMENT PLAN | PEAT MITIGATION AREAS chainage 26000 to 27600 | A9P08-CFJ-EGT-J_ML260_ZZ-DR-EN-0004 | GIS |
| 10.45 | ASSESSMENT PLAN | PEAT MITIGATION AREAS chainage 27600 to 29000 | A9P08-CFJ-EGT-J_ML276_ZZ-DR-EN-0004 | GIS |
| 10.46 | ASSESSMENT PLAN | PEAT MITIGATION AREAS chainage 29000 to 30400 | A9P08-CFJ-EGT-J_ML290_ZZ-DR-EN-0004 | GIS |
| 10.47 | ASSESSMENT PLAN | PEAT MITIGATION AREAS chainage 30000 to 31050 | A9P08-CFJ-EGT-J_ML300_ZZ-DR-EN-0003 | GIS |



Legend

- Proposed Scheme Detail
- Watercourse Diversions
- Drainage
- 200 SuDS ID
- Proposed Culverts
- Compensatory Storage Areas
- Assessment Boundary - Permanent Works
- Assessment Boundary - Temporary Works
- Earthwork Cuttings and Widening
- C01 Earthwork Cutting ID

Potential GWLTE and Polygon IDs:

- Highly Groundwater Dependent
- Moderately Groundwater Dependent
- Partially Groundwater Dependent
- Not Groundwater Dependent
- Target Note Locations and IDs
- Minimum Potential GWLTE Study Area

Notes:
 Only excavations anticipated to be equal to or greater than 1.00m are specifically labelled.
 Potential GWLTE ratings shown are based solely on SEPA guidance (2014). The likely dependency of each area is considered and assessed in Appendix 10.2 (Volume 2) of the Environmental Statement. Reference should therefore be made to this as necessary.

SCALE 1:5000

| REV | SUJ | DATE | DESCRIPTION | HA | JF |
|-----|-----|--------|-------------------|----|----|
| P03 | S3 | NOV 17 | FINAL REVISIONS | HA | JF |
| P02 | S3 | AUG 17 | DESIGN UPDATE | HA | JF |
| P01 | S3 | MAR 17 | DRAFT FOR COMMENT | HA | JF |

ch2m FAIRHURST
 CH2MHILL Fairhurst JV
 C/O: City Park 368 Alexandra Parade Glasgow G31 3AU
 Tel + 44 (0) 141 552 2000 Fax +44 (0) 141 552 2525

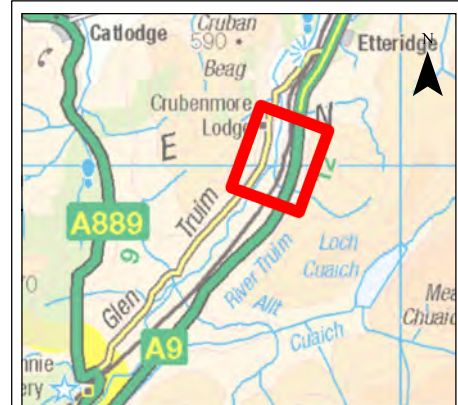
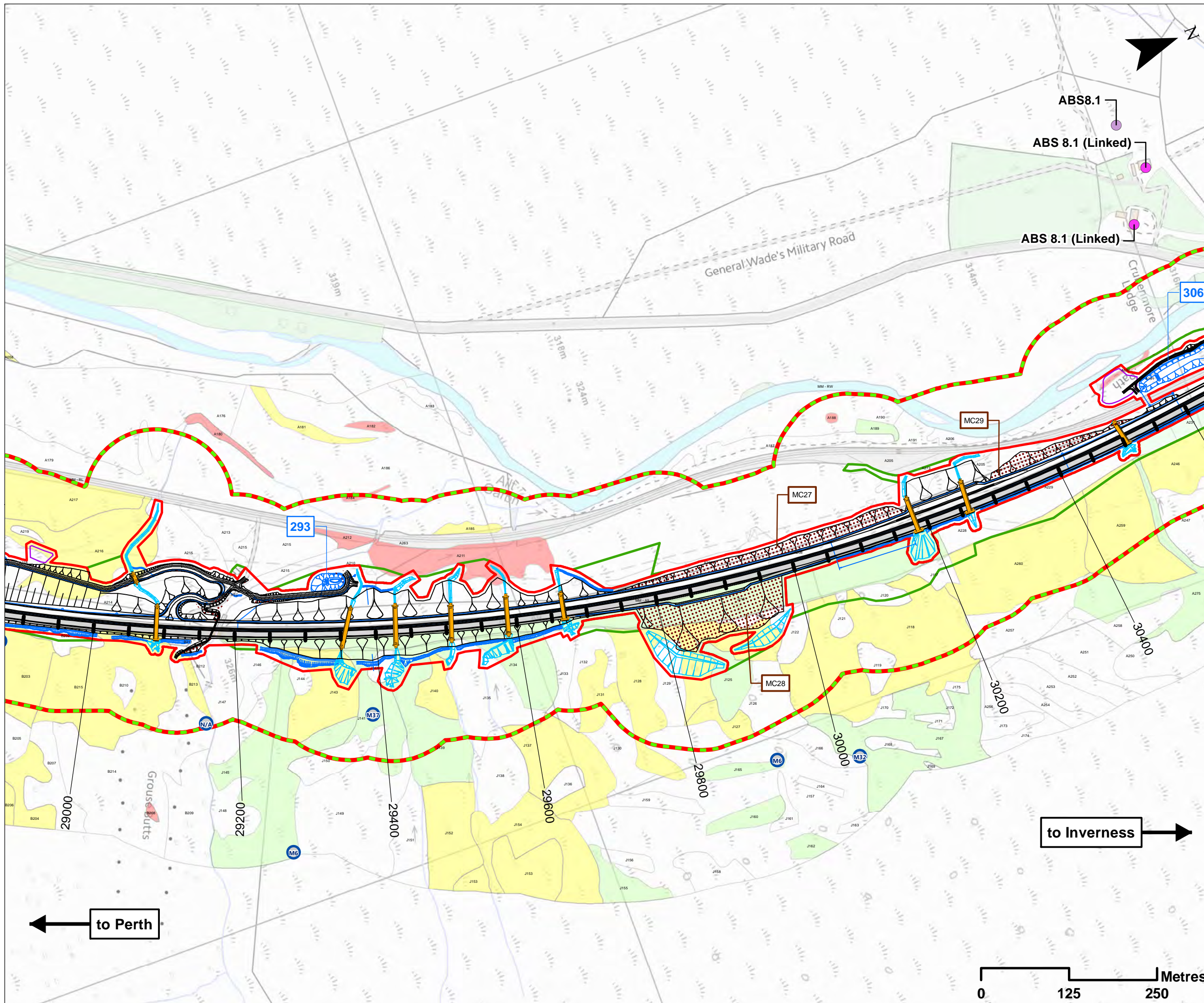
TRANSPORT SCOTLAND **A9 DUALLING**

PROJECT 8 DALWHINNIE TO CRUBENMORE EIA ASSESSMENT PLAN
DRAWING 10.27
GROUNDWATER ABSTRUCTIONS, PRIVATE WATER SUPPLIES AND GWLTE
 chainage 27600 to 29000

| | | | |
|------------|-----------|---------|---------|
| DESIGN: CK | DRAWN: HA | CHK: CK | APP: JF |
|------------|-----------|---------|---------|

DATE: 24/11/2017
 PROJ: 495298
 DWG: A9P08-CFJ-EGT-J_ML276_ZZ-DR-EN-0002

| | | |
|---------------|---------------|-----------------|
| SHEET: 7 OF 9 | REVISION: C01 | SUITABILITY: A3 |
|---------------|---------------|-----------------|



Legend

- Proposed Scheme Detail
- Watercourse Diversions
- Drainage
- 200 SuDS ID
- Proposed Culverts
- Compensatory Storage
- Assessment Boundary - Permanent Works
- Assessment Boundary - Temporary Works
- Earthwork Cuttings and Widening
- C01 Earthwork Cutting ID
- Private Water Supplies - Source Location
- Private Water Supplies - Supplied Property
- ABS 8.0 Abstraction/ Private Water Supply ID
- Highly Groundwater Dependent
- Moderately Groundwater Dependent
- Partially Groundwater Dependent
- Not Groundwater Dependent
- Target Note Locations and IDs
- Minimum Potential GWDE Study Area

Notes:
Only excavations anticipated to be equal to or greater than 1.00m are specifically labelled.

Potential GWDE ratings shown are based solely on SEPA guidance (2014). The likely dependency of each area is considered and assessed in Appendix 10.2 (Volume 2) of the Environmental Statement. Reference should therefore be made to this as necessary.

SCALE 1:5000

| | | | | | |
|-----|-----|--------|-------------------|----|-----|
| P03 | S3 | NOV 17 | FINAL REVISIONS | HA | JF |
| P02 | S3 | AUG 17 | DESIGN UPDATE | HA | JF |
| P01 | S3 | MAR 17 | DRAFT FOR COMMENT | HA | JF |
| REV | SUJ | DATE | DESCRIPTION | BY | APP |

ch2m FAIRHURST

CH2MHILL Fairhurst JV
C/O: City Park 368 Alexandra Parade Glasgow G31 3AU
Tel + 44 (0) 141 552 2000 Fax +44 (0) 141 552 2525



**PROJECT 8 DALWHINNIE TO CRUBENMORE EIA
ASSESSMENT PLAN
DRAWING 10.28
GROUNDWATER ABSTRACTIONS, PRIVATE
WATER SUPPLIES AND GWDE
CHAINAGE 29000 TO 30400**

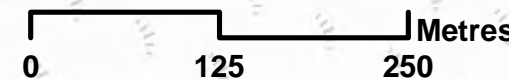
| | | | |
|---------------|--------------|------------|------------|
| DESIGN: CK | DRAWN: HA | CHK: CK | APP: JF |
|---------------|--------------|------------|------------|

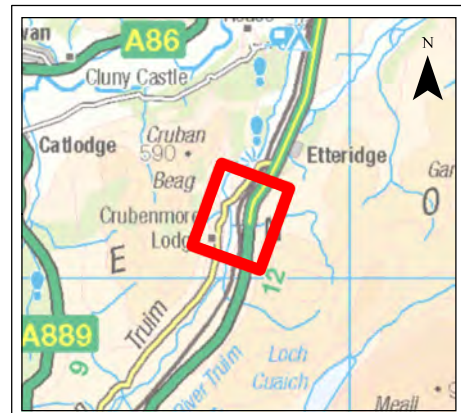
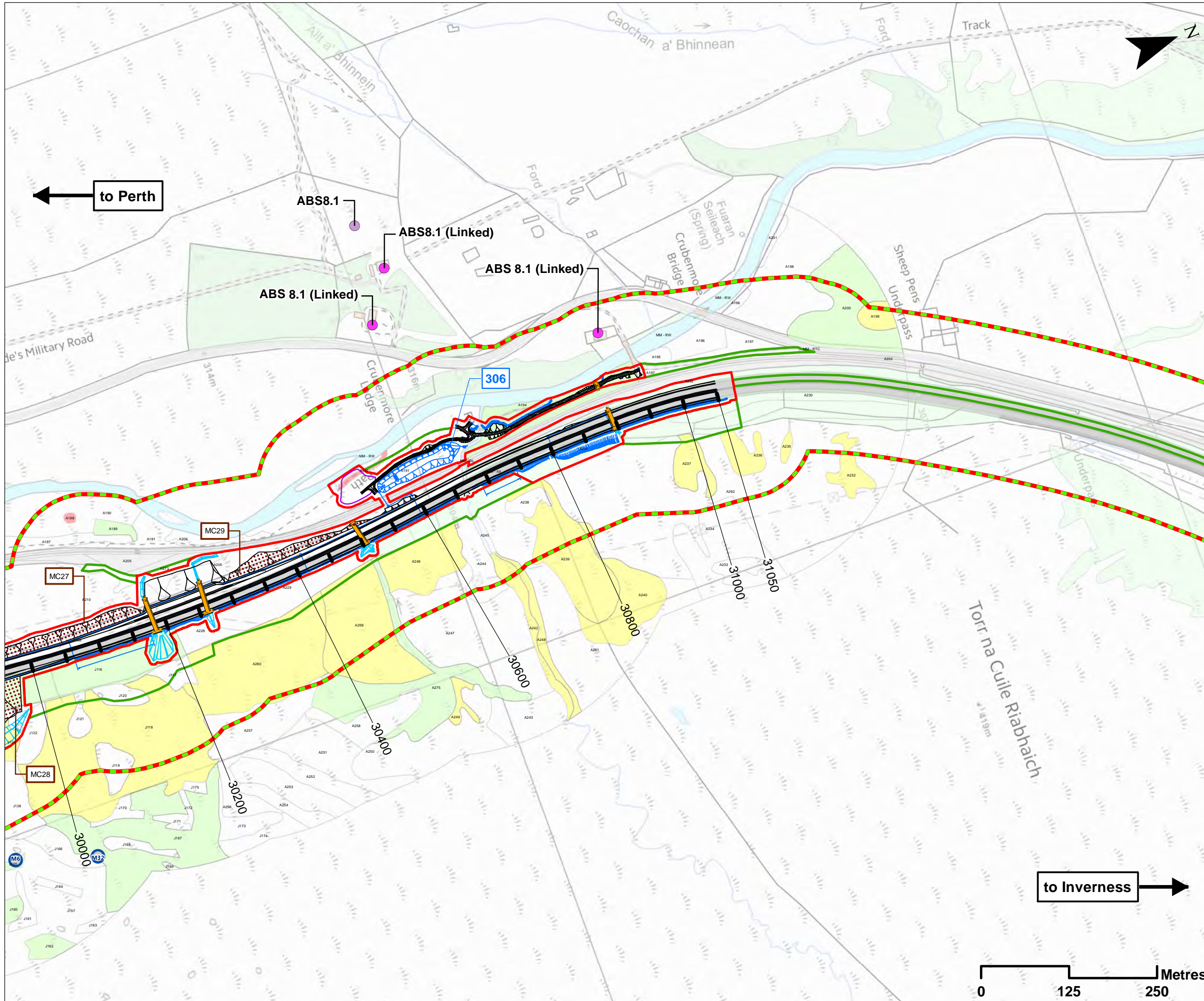
DATE: 24/11/2017

PROJ: 495298

DWG: A9P08-CFJ-EGT-J_ML290_ZZ-DR-EN-0002

| | | |
|------------------|------------------|--------------------|
| SHEET: 8 OF 9 | REVISION: C01 | SUITABILITY: A3 |
|------------------|------------------|--------------------|





- Legend**
- Proposed Scheme Detail
 - Watercourse Diversions
 - Drainage
 - 200 SuDS ID
 - Proposed Culverts
 - Compensatory Storage Areas
 - Assessment Boundary - Permanent Works
 - Assessment Boundary - Temporary Works
 - Earthwork Cuttings and Widening
 - C01 Earthwork Cutting ID
 - Private Water Supplies - Source Location
 - Private Water Supplies - Supplied Property
- ABS 8.0** Abstraction/ Private Water Supply ID
- Potential GWLTE and Polygon IDs:**
- Highly Groundwater Dependent
 - Moderately Groundwater Dependent
 - Partially Groundwater Dependent
 - Not Groundwater Dependent
 - Target Note Locations and IDs
 - Minimum Potential GWLTE Study Area

Notes:
 Only excavations anticipated to be equal to or greater than 1.00m are specifically labelled.
 Potential GWLTE ratings shown are based solely on SEPA guidance (2014). The likely dependency of each area is considered and assessed in Appendix 10.2 (Volume 2) of the Environmental Statement. Reference should therefore be made to this as necessary.

SCALE 1:5000

| | | | | | |
|-----|-----|--------|-------------------|----|-----|
| P03 | S3 | NOV 17 | FINAL REVISIONS | HA | JF |
| P02 | S3 | AUG 17 | DESIGN UPDATE | HA | JF |
| P01 | S3 | MAR 17 | DRAFT FOR COMMENT | HA | JF |
| REV | SUJ | DATE | DESCRIPTION | BY | APP |

ch2m: FAIRHURST
 CH2MHILL Fairhurst JV
 C/O: City Park 368 Alexandra Parade Glasgow G31 3AU
 Tel + 44 (0) 141 552 2000 Fax +44 (0) 141 552 2525

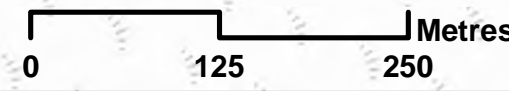


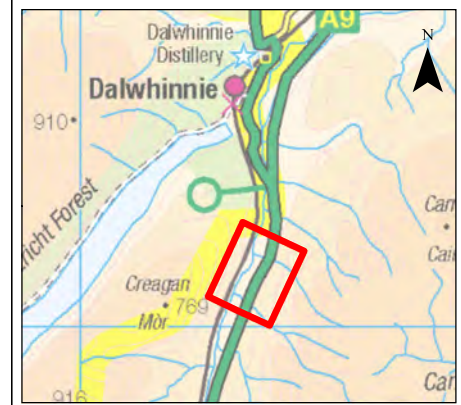
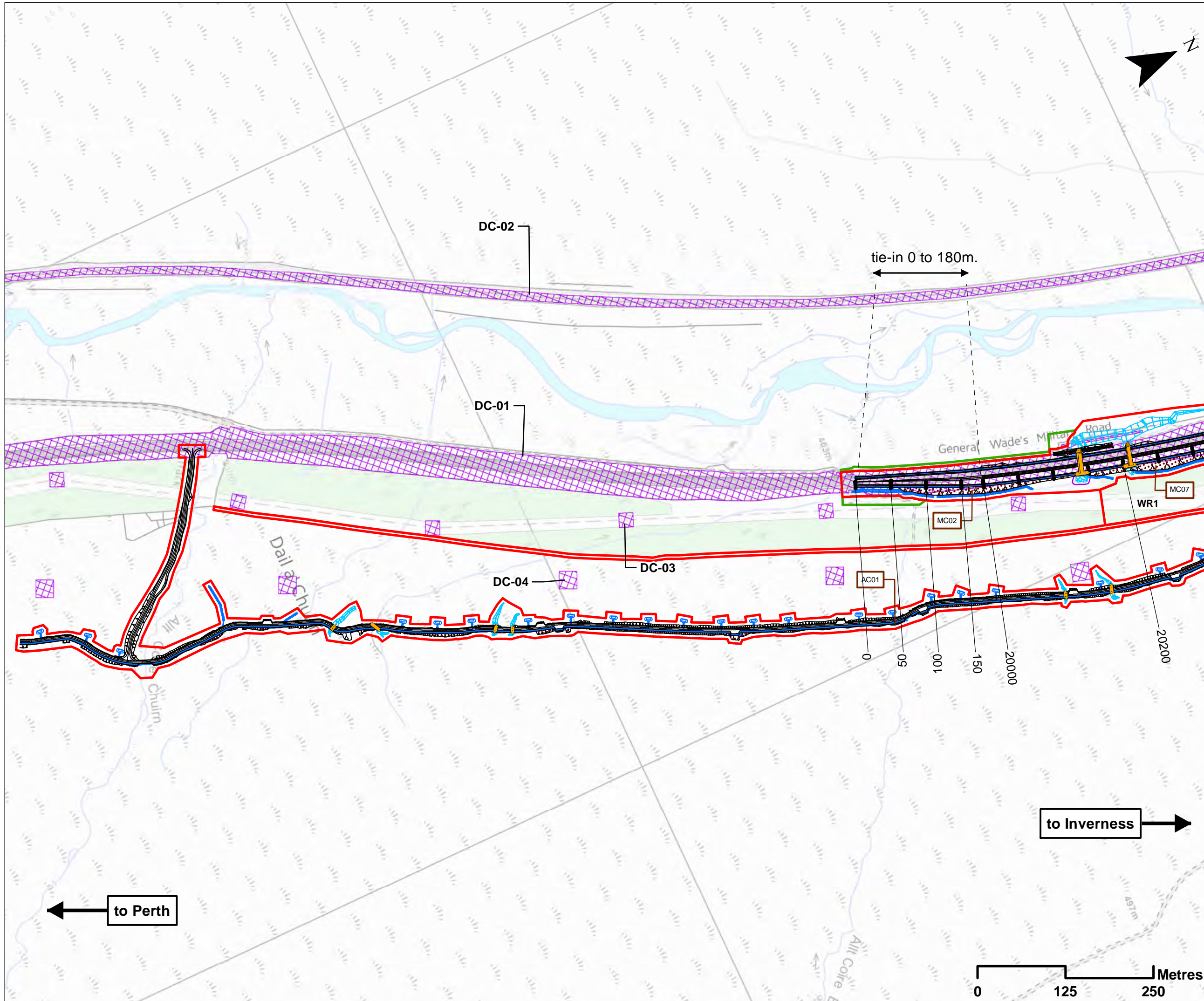
PROJECT 8 DALWHINNIE TO CRUBENMORE EIA
ASSESSMENT PLAN
DRAWING 10.29
GROUNDWATER ABSTRACTIONS, PRIVATE WATER SUPPLIES AND GWLTE
chainage 30000 to 31050

| | | | |
|---------------|--------------|------------|------------|
| DESIGN: CK | DRAWN: HA | CHK: CK | APP: JF |
|---------------|--------------|------------|------------|

DATE: 24/11/2017
 PROJ: 495298
 DWG: A9P08-CFJ-EGT-J_ML300_ZZ-DR-EN-0001

| | | |
|------------------|------------------|--------------------|
| SHEET: 9 OF 9 | REVISION: C01 | SUITABILITY: A3 |
|------------------|------------------|--------------------|





- ### Legend
- Proposed Scheme Detail
 - Watercourse Diversions
 - Drainage
 - Proposed Culverts
 - Compensatory Storage Areas
 - Assessment Boundary - Permanent Works
 - Assessment Boundary - Temporary Works
 - WR1 Winter Resilience Tree Belt (Indicative)
 - Earthwork Cuttings and Widening
 - C01 Earthwork Cutting ID
 - Potentially Contaminated Sources - Polygon
 - Potentially Contaminated Sources Label

Notes:
Only excavations anticipated to be equal to or greater than 1.00m are specifically labelled

SCALE 1:5000

| | | | | | |
|-----|-----|--------|-------------------|----|-----|
| P03 | S3 | NOV 17 | FINAL REVISIONS | HA | JF |
| P02 | S3 | AUG 17 | DESIGN UPDATE | HA | JF |
| P01 | S3 | MAR 17 | DRAFT FOR COMMENT | HA | JF |
| REV | SUI | DATE | DESCRIPTION | BY | APP |

ch2m. FAIRHURST
CH2MHILL Fairhurst JV
C/O: City Park 368 Alexandra Parade Glasgow G31 3AU
Tel + 44 (0) 141 552 2000 Fax +44 (0) 141 552 2525



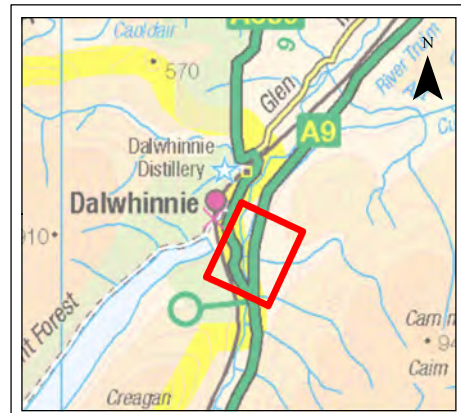
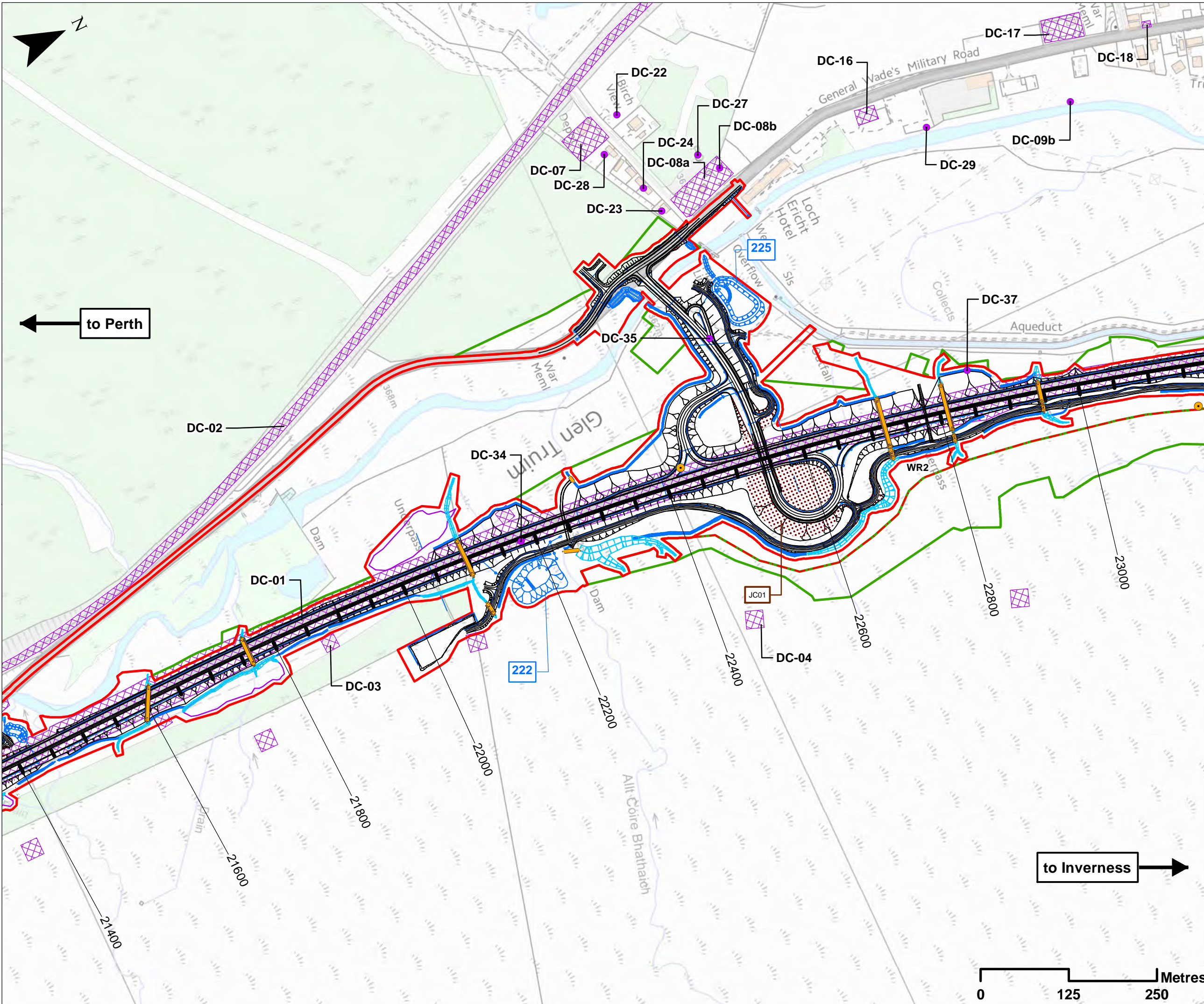
**PROJECT 8 DALWHINNIE TO CRUBENMORE EIA
ASSESSMENT PLAN
DRAWING 10.30
POTENTIAL CONTAMINATION SOURCES
chainage 0 to 20000**

| | | | |
|---------------|--------------|------------|------------|
| DESIGN: CK | DRAWN: HA | CHK: CK | APP: JF |
|---------------|--------------|------------|------------|

DATE: 23/11/2017
PROJ: 495298

| | | |
|--|---------------|-----------------|
| DWG: A9P08-CFJ-EGT-J_ML000_ZZ-DR-EN-0004 | | |
| SHEET: 1 OF 9 | REVISION: C01 | SUITABILITY: A3 |

Document Path: \\g:\p08\A9P08-CFJ-EGT-J_ML000_ZZ-DR-EN-0004\10.30\10.30.mxd



- Legend**
- Proposed Scheme Detail
 - Watercourse Diversions
 - Drainage
 - 200 SuDS ID
 - Proposed Culverts
 - Compensatory Storage Areas
 - Assessment Boundary - Permanent Works
 - Assessment Boundary - Temporary Works
 - WR1 Winter Resilience Tree Belt (Indicative)
 - Earthwork Cuttings and Widening
 - C01 Earthwork Cutting ID
 - Potentially Contaminated Source - Polygon
 - Potentially Contaminated Source - Point
 - DC-00 Potentially Contaminated Sources Label
 - Potential Radon Hazard
- Notes:**
Only excavations anticipated to be equal to or greater than 1.00m are specifically labelled

SCALE 1:5000

| | | | | | |
|-----|------|--------|-------------------|----|-----|
| P03 | S3 | NOV 17 | FINAL REVISIONS | HA | JF |
| P02 | S3 | AUG 17 | DESIGN UPDATE | HA | JF |
| P01 | S3 | MAR 17 | DRAFT FOR COMMENT | HA | JF |
| REV | SUIT | DATE | DESCRIPTION | BY | APP |

ch2m: FAIRHURST
 CH2MHILL Fairhurst JV
 C/O: City Park 368 Alexandra Parade Glasgow G31 3AU
 Tel + 44 (0) 141 552 2000 Fax +44 (0) 141 552 2525

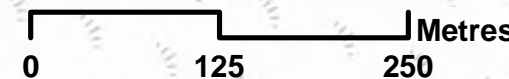


**PROJECT 8 DALWHINNIE TO CRUBENMORE EIA
 ASSESSMENT PLAN
 DRAWING 10.32
 POTENTIAL CONTAMINATION SOURCES
 chainage 21400 to 23000**

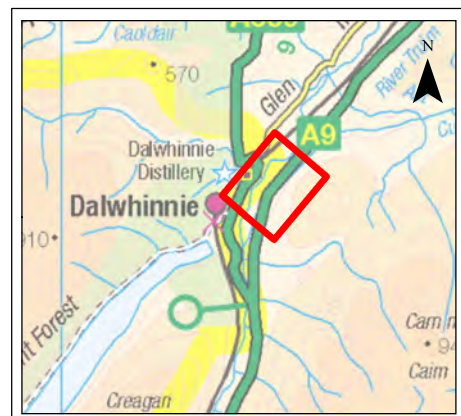
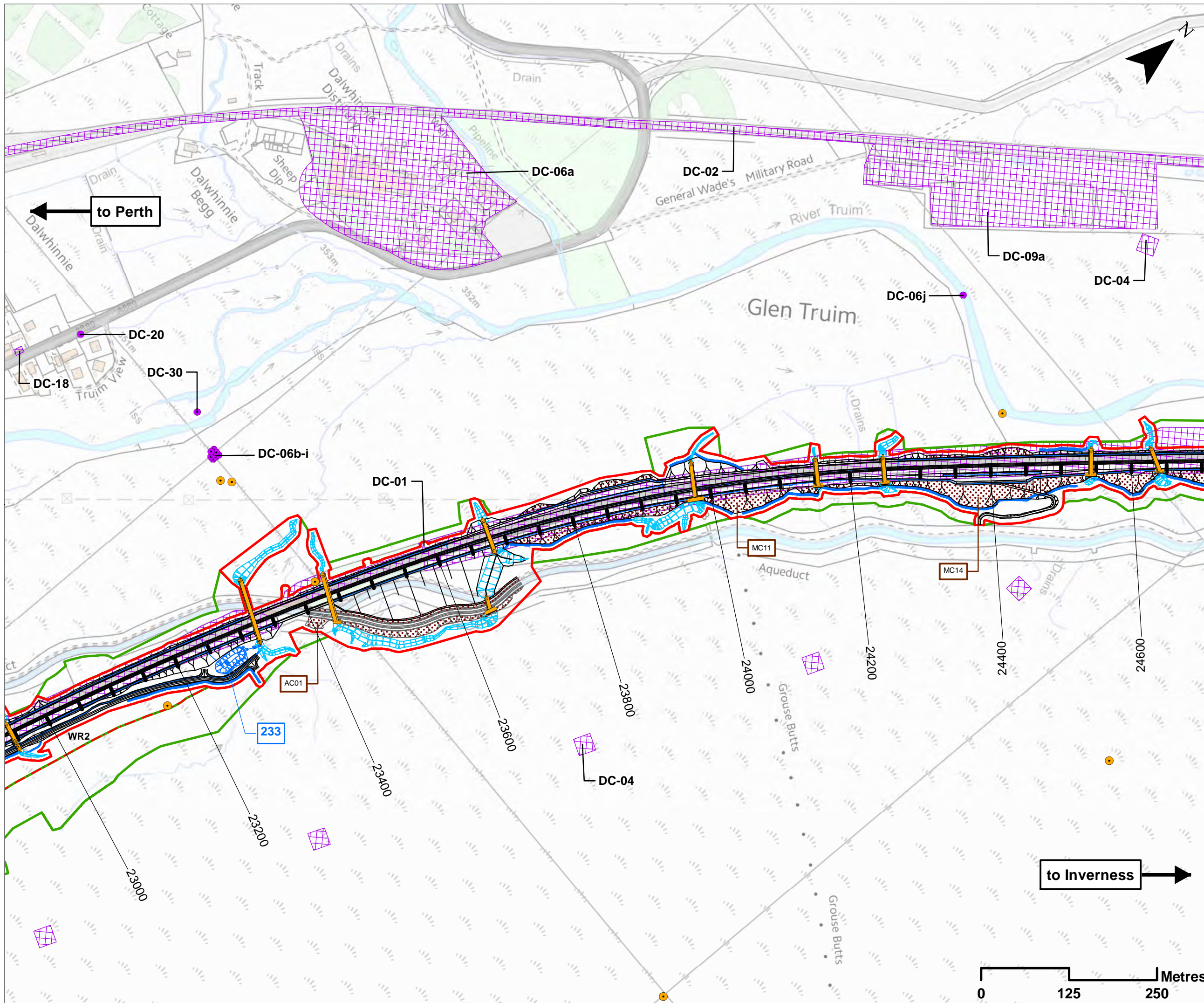
| | | | |
|---------------|--------------|------------|------------|
| DESIGN: CK | DRAWN: HA | CHK: CK | APP: JF |
|---------------|--------------|------------|------------|

DATE: 28/11/2017
 PROJ: 495298

| | | |
|--|------------------|--------------------|
| DWG: A9P08-CFJ-EGT-J_ML214_ZZ-DR-EN-0003 | | |
| SHEET: 3 OF 9 | REVISION: C01 | SUITABILITY: A3 |



Document Path: \\g:\p08\10\geospatial\Project\A9_Dualling\10_32\DR-EN-0003\A9P08-CFJ-EGT-J_ML214_ZZ-DR-EN-0003.dwg



- ### Legend
- Proposed Scheme Detail
 - Aqueduct Diversion
 - Watercourse Diversions
 - Drainage
 - 200 SuDS ID
 - Proposed Culverts
 - Assessment Boundary - Permanent Works
 - Assessment Boundary - Temporary Works
 - WR1 Winter Resilience Tree Belt (Indicative)
 - Earthwork Cuttings and Widening
 - C01 Earthwork Cutting ID
 - Potentially Contaminated Source - Polygon
 - Potentially Contaminated Source - Point
 - DC-00 Potentially Contaminated Sources Label
 - Potential Radon Hazard

Notes:
 Only excavations anticipated to be equal to or greater than 1.00m are specifically labelled

SCALE 1:5000

| | | | | | |
|-----|-----|--------|-------------------|----|-----|
| P03 | S3 | NOV 17 | FINAL REVISIONS | HA | JF |
| P02 | S3 | AUG 17 | DESIGN UPDATE | HA | JF |
| P01 | S3 | MAR 17 | DRAFT FOR COMMENT | HA | JF |
| REV | SUJ | DATE | DESCRIPTION | BY | APP |

ch2m FAIRHURST
 CH2MHILL Fairhurst JV
 C/O: City Park 368 Alexandra Parade Glasgow G31 3AU
 Tel + 44 (0) 141 552 2000 Fax +44 (0) 141 552 2525

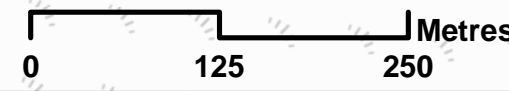


PROJECT 8 DALWHINNIE TO CRUBENMORE EIA ASSESSMENT PLAN DRAWING 10.33 POTENTIAL CONTAMINATION SOURCES chainage 23000 to 24600

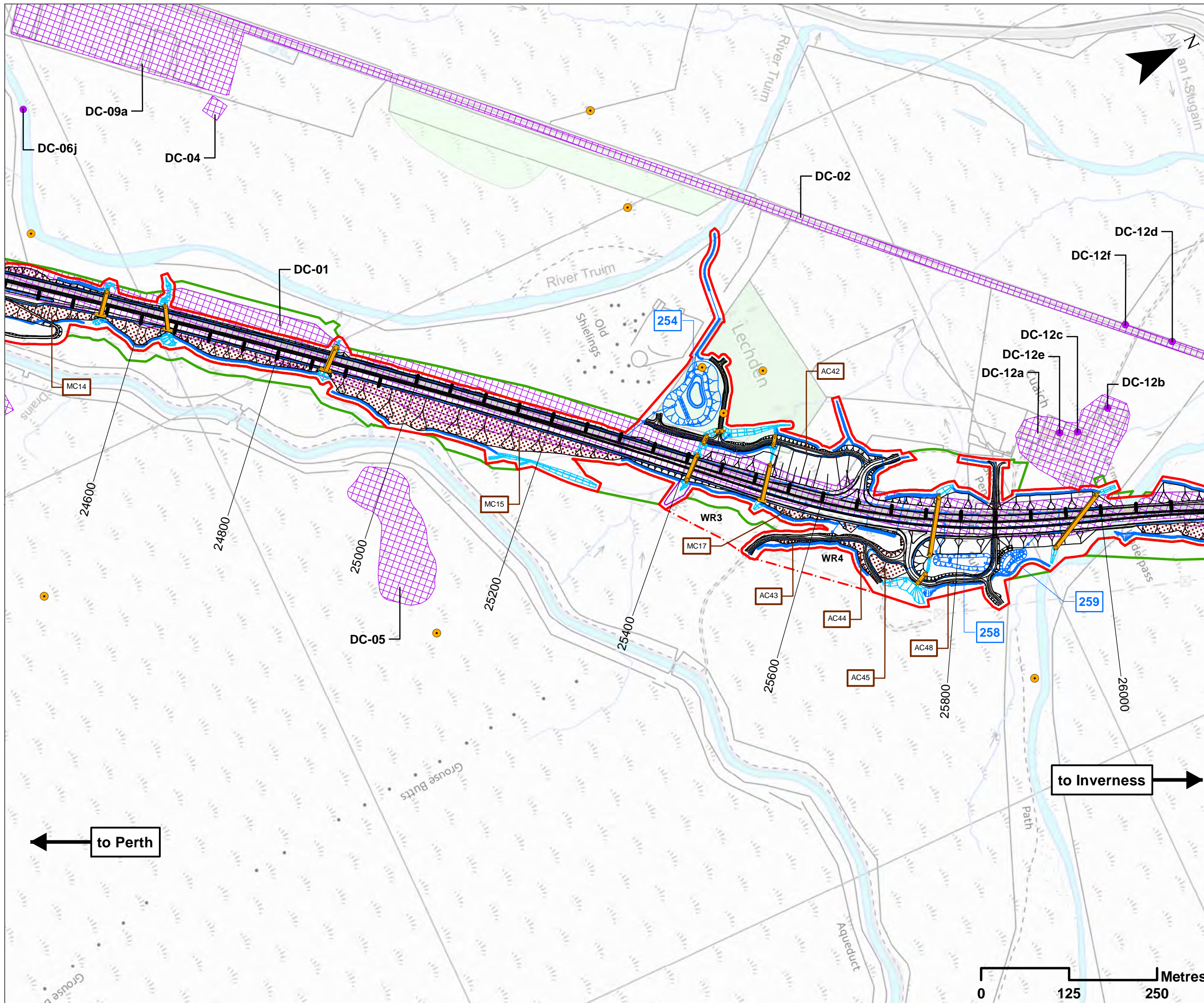
| | | | |
|---------------|--------------|------------|------------|
| DESIGN: CK | DRAWN: HA | CHK: CK | APP: JF |
|---------------|--------------|------------|------------|

DATE: 28/11/2017
 PROJ: 495298

| | | |
|--|---------------|-----------------|
| DWG: A9P08-CFJ-EGT-J ML230 ZZ-DR-EN-0003 | | |
| SHEET: 4 OF 9 | REVISION: C01 | SUITABILITY: A3 |



Document Path: \\g:\p08\A9P08-CFJ-EGT-J ML230 ZZ-DR-EN-0003\A9P08-CFJ-EGT-J ML230 ZZ-DR-EN-0003\10.33.mxd



Legend

- Proposed Scheme Detail
- Watercourse Diversions
- Drainage
- 200 SuDS ID
- Proposed Culverts
- Compensatory Storage Areas
- Assessment Boundary - Permanent Works
- Assessment Boundary - Temporary Works
- WR1 Winter Resilience Tree Belt (Indicative)
- Earthwork Cuttings and Widening
- C01 Earthwork Cutting ID
- Potentially Contaminated Sources - Polygon
- Potentially Contaminated Sources - Points
- DC-00 Potentially Contaminated Sources Label
- Potential Radon Hazard

Notes:
Only excavations anticipated to be equal to or greater than 1.00m are specifically labelled

SCALE 1:5000

| REV | SUJ | DATE | DESCRIPTION | HA | APP |
|-----|-----|--------|-------------------|----|-----|
| P03 | S3 | NOV 17 | FINAL REVISIONS | HA | JF |
| P02 | S3 | AUG 17 | DESIGN UPDATE | HA | JF |
| P01 | S3 | MAR 17 | DRAFT FOR COMMENT | HA | JF |

ch2m FAIRHURST

CH2MHILL Fairhurst JV
C/O: City Park 368 Alexandra Parade Glasgow G31 3AU
Tel + 44 (0) 141 552 2000 Fax +44 (0) 141 552 2525



**PROJECT 8 DALWHINNIE TO CRUBENMORE EIA
ASSESSMENT PLAN
DRAWING 10.34
POTENTIAL CONTAMINATION SOURCES
chainage 24600 to 26000**

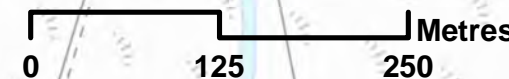
| | | | |
|---------------|--------------|------------|------------|
| DESIGN: CK | DRAWN: HA | CHK: CK | APP: JF |
|---------------|--------------|------------|------------|

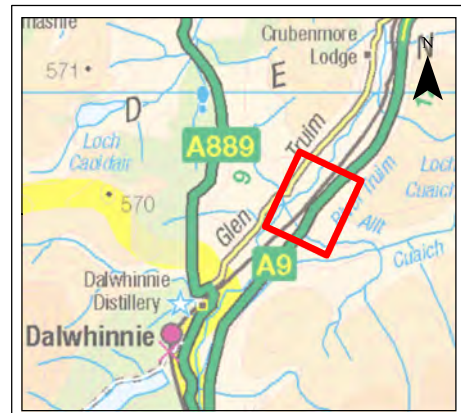
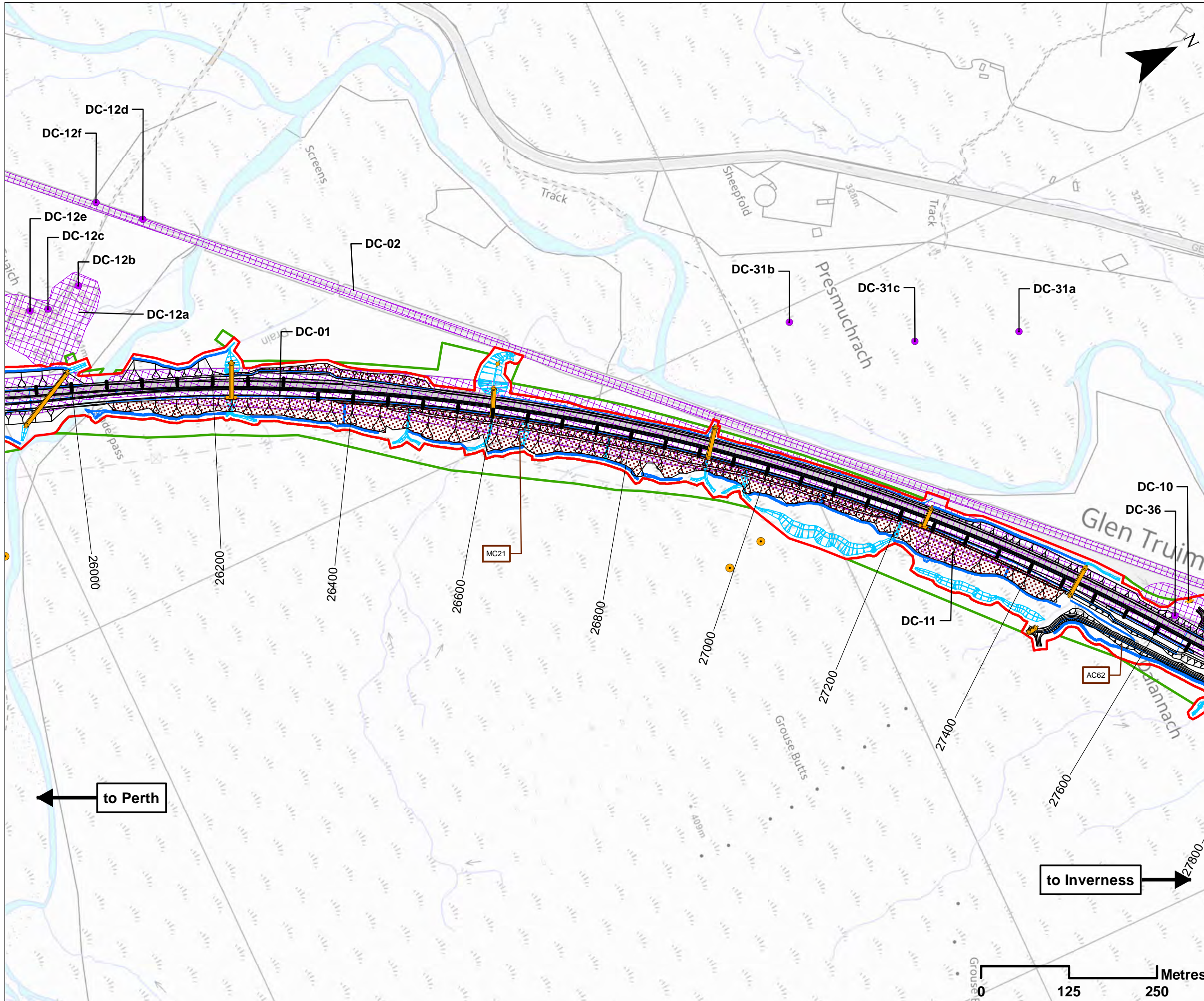
DATE: 28/11/2017

PROJ: 495298

DWG: A9P08-CFJ-EGT-J_ML246_ZZ-DR-EN-0003

| | | |
|------------------|------------------|--------------------|
| SHEET: 5 OF 9 | REVISION: C01 | SUITABILITY: A3 |
|------------------|------------------|--------------------|





- ### Legend
- Proposed Scheme Detail
 - Watercourse Diversions
 - Drainage
 - Proposed Culverts
 - Compensatory Storage Areas
 - Assessment Boundary - Permanent Works
 - Assessment Boundary - Temporary Works
 - Earthwork Cuttings and Widenings
 - C01 Earthwork Cutting ID
 - Potentially Contaminated Sources - Polygon
 - Potentially Contaminated Sources - Points
 - DC-00** Potentially Contaminated Sources Label
 - Potential Radon Hazard

Notes:
Only excavations anticipated to be equal to or greater than 1.00m are specifically labelled

SCALE 1:5000

| | | | | | |
|-----|-----|--------|-------------------|----|-----|
| P03 | S3 | NOV 17 | FINAL REVISIONS | HA | JF |
| P02 | S3 | AUG 17 | DESIGN UPDATE | HA | JF |
| P01 | S3 | MAR 17 | DRAFT FOR COMMENT | HA | JF |
| REV | SUI | DATE | DESCRIPTION | BY | APP |

ch2m: FAIRHURST
 CH2MHILL Fairhurst JV
 C/O: City Park 368 Alexandra Parade Glasgow G31 3AU
 Tel + 44 (0) 141 552 2000 Fax +44 (0) 141 552 2525



**PROJECT 8 DALWHINNIE TO CRUBENMORE EIA
 ASSESSMENT PLAN
 DRAWING 10.35
 POTENTIAL CONTAMINATION SOURCES
 chainage 26000 to 27600**

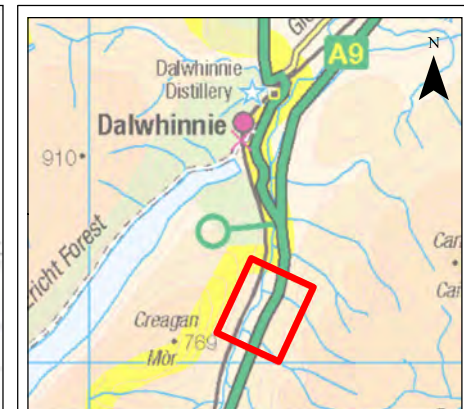
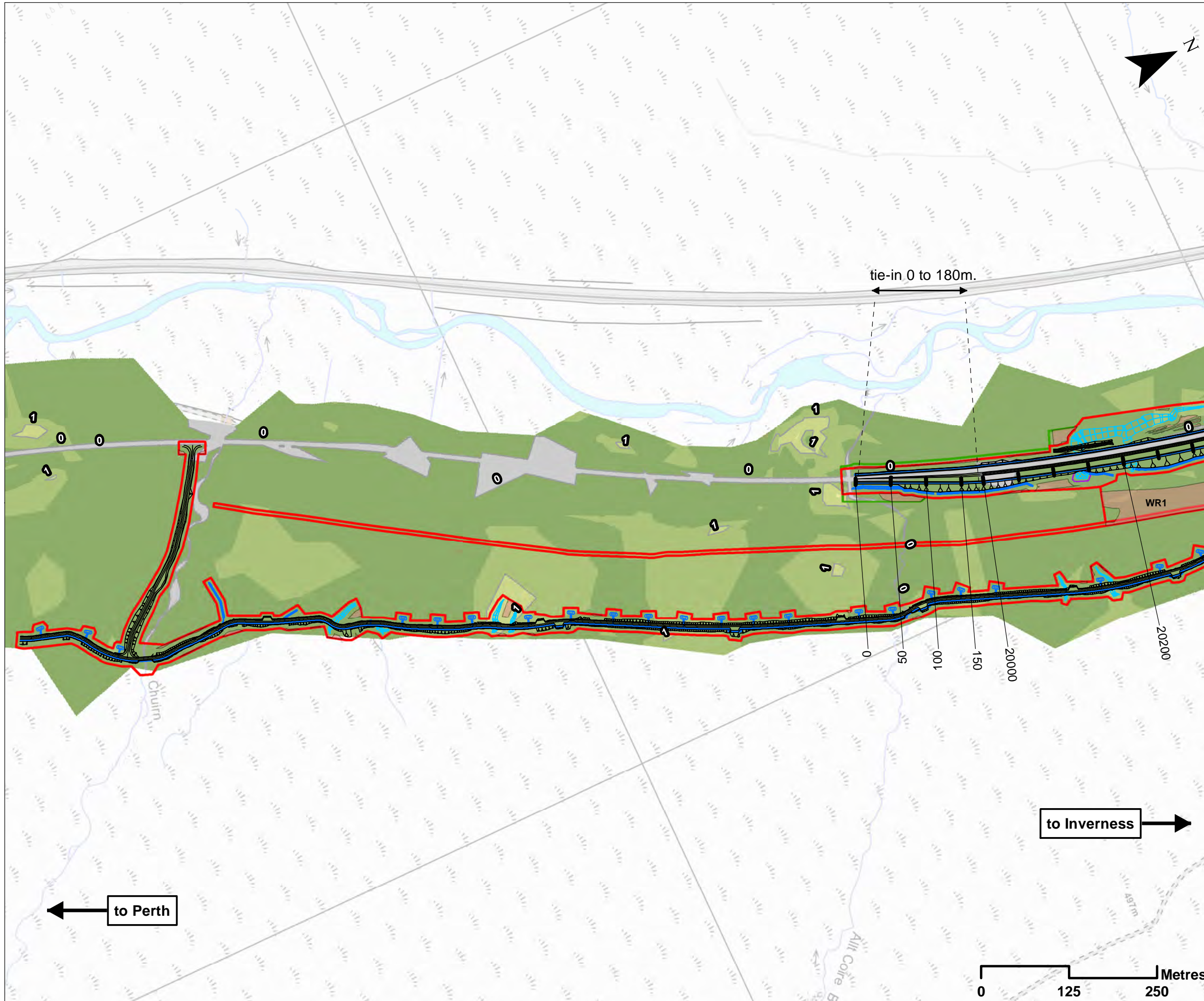
| | | | |
|---------------|--------------|------------|------------|
| DESIGN: CK | DRAWN: HA | CHK: CK | APP: JF |
|---------------|--------------|------------|------------|

DATE: 23/11/2017
 PROJ: 495298

DWG: A9P08-CFJ-EGT-J_ML260_ZZ-DR-EN-0003

| | | |
|------------------|------------------|--------------------|
| SHEET: 6 OF 9 | REVISION: C01 | SUITABILITY: A3 |
|------------------|------------------|--------------------|

Document Path: \\g:\p08\A9P08-CFJ-EGT-J_ML260_ZZ-DR-EN-0003\Drawings\10.35.mxd



Legend

- Proposed Scheme Detail
 - Watercourse Diversions
 - Drainage
 - Compensatory Storage
 - Assessment Boundary - Permanent Works
 - Assessment Boundary - Temporary Works
 - WR1 Winter Resilience Tree Belt (Indicative)
 - Provisional Temporary Storage Areas
- Peat Model:**
- Depth Contours (m bgl)**
- No Peat
 - 0.0 - 0.5
 - 0.5 - 1
 - 1 - 1.5
 - 1.5 - 2
- Peat Contour Lines (1m)
- 1 Contour Labels (m bgl)

SCALE 1:5000

| | | | | | |
|-----|------|--------|-------------------|----|-----|
| P02 | S3 | NOV 17 | FINAL REVISIONS | HA | JF |
| P01 | S3 | AUG 17 | DRAFT FOR COMMENT | HA | JF |
| REV | SUIT | DATE | DESCRIPTION | BY | APP |

ch2m. FAIRHURST

CH2MHILL Fairhurst JV
 C/O: City Park 368 Alexandra Parade Glasgow G31 3AU
 Tel + 44 (0) 141 552 2000 Fax +44 (0) 141 552 2525



**PROJECT 8 DALWHINNIE TO CRUBENMORE EIA
 ASSESSMENT PLAN
 DRAWING 10.39
 PEAT MITIGATION AREAS
 chainage 0 to 20000**

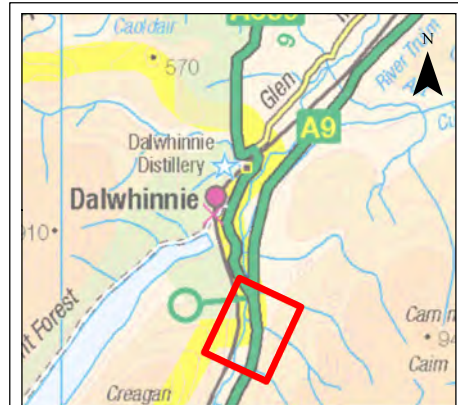
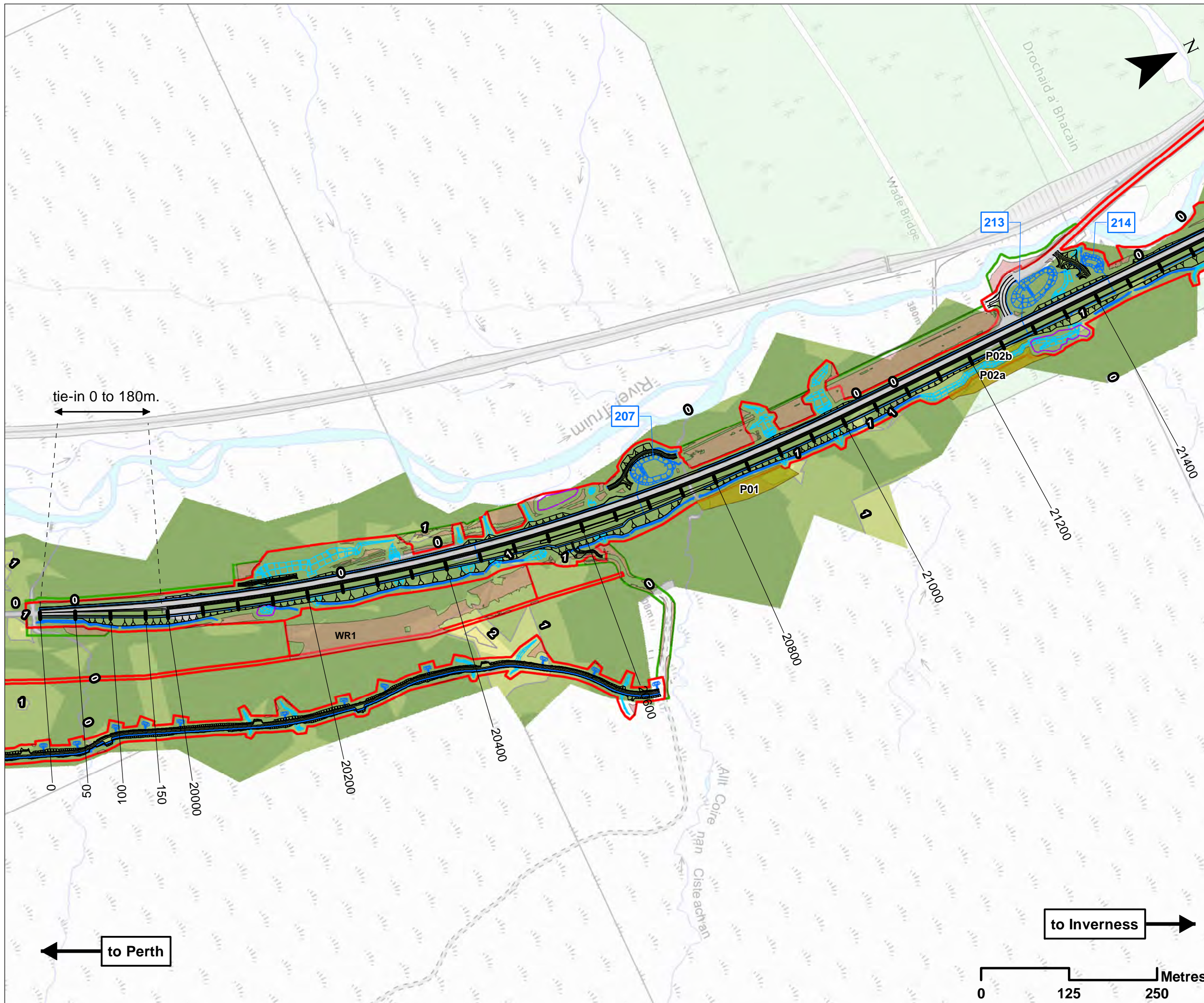
| | | | |
|---------------|--------------|------------|------------|
| DESIGN: CK | DRAWN: HA | CHK: CK | APP: JF |
|---------------|--------------|------------|------------|

DATE: 07/12/2017

PROJ: 495298

DWG: A9P08-CFJ-EGT-J_ML000_ZZ-DR-EN-0005

| | | |
|------------------|------------------|--------------------|
| SHEET: 1 OF 9 | REVISION: C01 | SUITABILITY: A3 |
|------------------|------------------|--------------------|



- Legend**
- Proposed Scheme Detail
 - Watercourse Diversions
 - Drainage
 - 200 SuDS ID
 - Compensatory Storage Areas
 - Assessment Boundary - Permanent Works
 - Assessment Boundary - Temporary Works
 - WR1 Winter Resilience Tree Belt (Indicative)
 - Candidate Peat Re-use Areas
 - Provisional Temporary Storage Areas

- Peat Model:**
Depth Contours (m bgl)
- No Peat
 - 0.0 - 0.5
 - 0.5 - 1
 - 1 - 1.5
 - 1.5 - 2
 - 2 - 2.5
- Peat Contour Lines (1m)
- 1 Contour Labels (m bgl)

SCALE 1:5000

| REV | SUJ | DATE | DESCRIPTION | HA | JF |
|-----|-----|--------|-------------------|----|----|
| P02 | S3 | NOV 17 | FINAL REVISIONS | HA | JF |
| P01 | S3 | AUG 17 | DRAFT FOR COMMENT | HA | JF |

ch2m: FAIRHURST
 CH2MHILL Fairhurst JV
 C/O: City Park 368 Alexandra Parade Glasgow G31 3AU
 Tel + 44 (0) 141 552 2000 Fax +44 (0) 141 552 2525



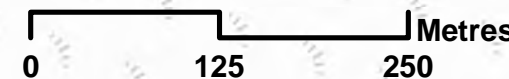
PROJECT 8 DALWHINNIE TO CRUBENMORE EIA
ASSESSMENT PLAN
DRAWING 10.40
PEAT MITIGATION AREAS
 chainage 20000 to 21400

| | | | |
|---------------|--------------|------------|------------|
| DESIGN: CK | DRAWN: HA | CHK: CK | APP: JF |
|---------------|--------------|------------|------------|

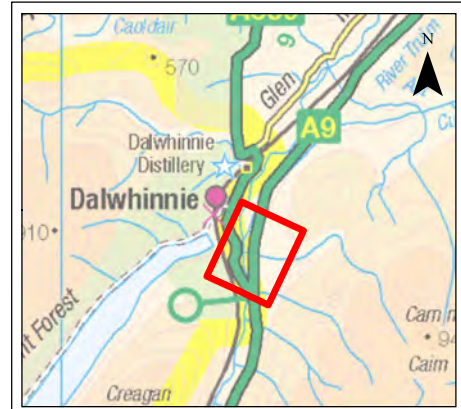
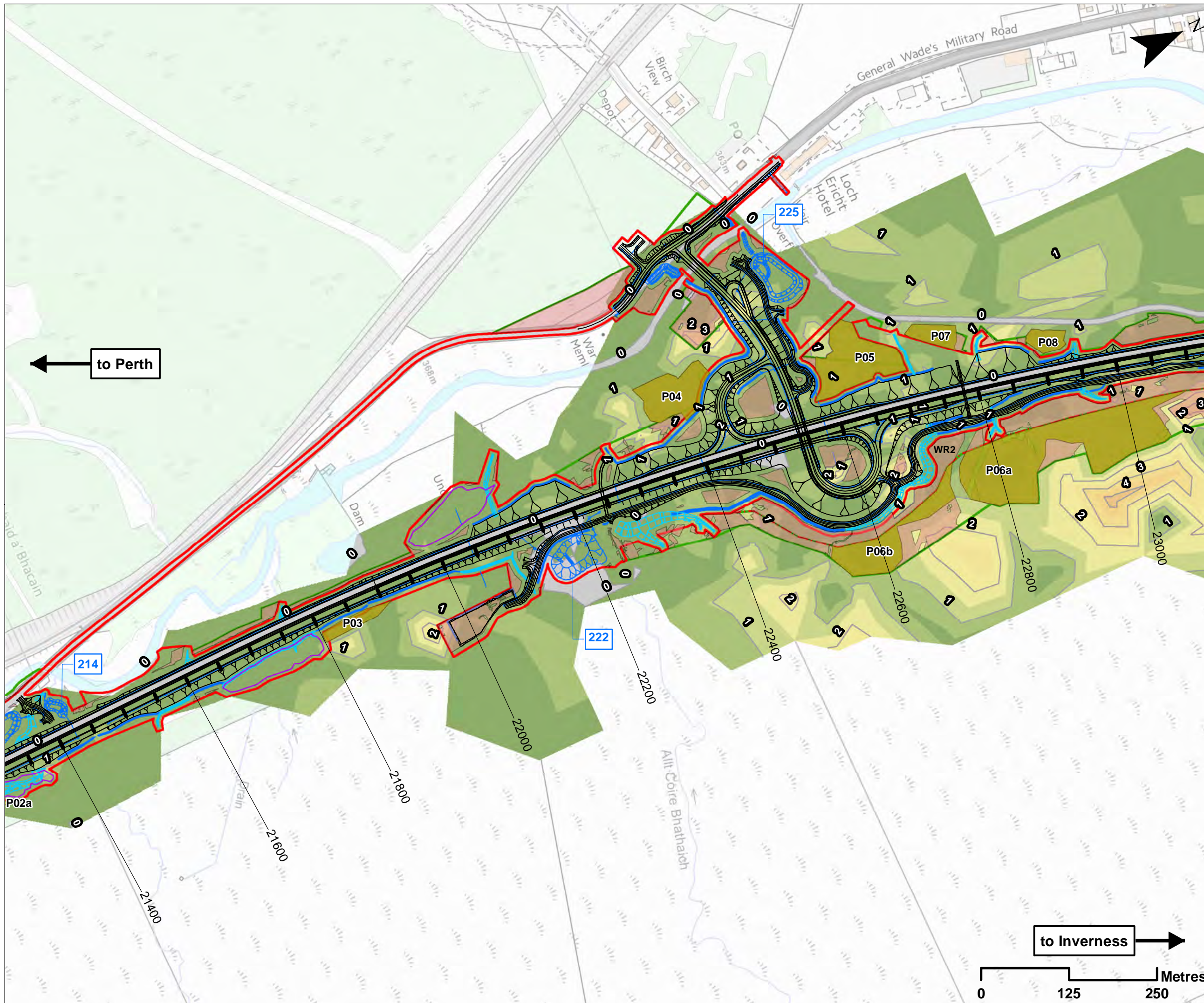
DATE: 07/12/2017
 PROJ: 495298

DWG: A9P08-CFJ-EGT-J_ML200_ZZ-DR-EN-0004

| | | |
|------------------|------------------|--------------------|
| SHEET: 2 OF 9 | REVISION: C01 | SUITABILITY: A3 |
|------------------|------------------|--------------------|



Document Path: \\g:\p08\CFJ\EGT\A9_ML200_ZZ-DR-EN-0004\10_Geology\Drawing_10_40.mxd



Legend

- Proposed Scheme Detail
- Watercourse Diversions
- Drainage
- 200 SuDS ID
- Compensatory Storage Areas
- Assessment Boundary - Permanent Works
- Assessment Boundary - Temporary Works
- Winter Resilience Tree Belt (Indicative)
- Candidate Peat Re-use Areas
- Provisional Temporary Storage Areas

Peat Model: Depth Contours (m bgl)

- No Peat
- 0.0 - 0.5
- 0.5 - 1
- 1 - 1.5
- 1.5 - 2
- 2 - 2.5
- 2.5 - 3
- 3 - 3.5
- 3.5 - 4
- 4 - 4.5

Peat Contour Lines (1m)

1 Contour Labels (m blg)

SCALE 1:5000

| | | | | | |
|-----|-----|--------|-------------------|----|-----|
| P02 | S3 | NOV 17 | FINAL REVISIONS | HA | JF |
| P01 | S3 | AUG 17 | DRAFT FOR COMMENT | HA | JF |
| REV | SUJ | DATE | DESCRIPTION | BY | APP |

ch2m: FAIRHURST
 CH2MHILL Fairhurst JV
 C/O: City Park 368 Alexandra Parade Glasgow G31 3AU
 Tel + 44 (0) 141 552 2000 Fax +44 (0) 141 552 2525



**PROJECT 8 DALWHINNIE TO CRUBENMORE EIA
 ASSESSMENT PLAN
 DRAWING 10.41
 PEAT MITIGATION AREAS
 chainage 21400 to 23000**

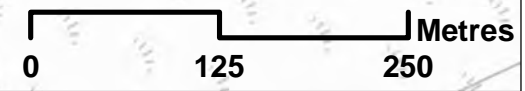
| | | | |
|---------------|--------------|------------|------------|
| DESIGN: CK | DRAWN: HA | CHK: CK | APP: JF |
|---------------|--------------|------------|------------|

DATE: 07/12/2017
 PROJ: 495298

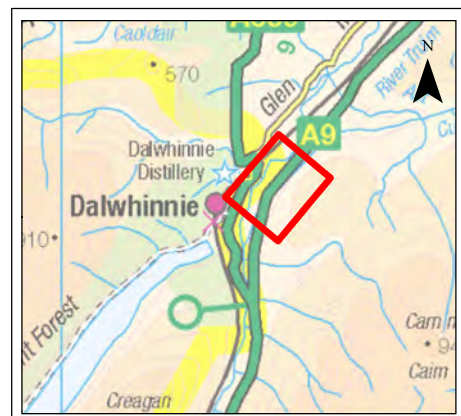
DWG: A9P08-CFJ-EGT-J_ML214_ZZ-DR-EN-0004

| | | |
|------------------|------------------|--------------------|
| SHEET: 3 OF 9 | REVISION: C01 | SUITABILITY: A3 |
|------------------|------------------|--------------------|

to Inverness →



Document Path: \\g:\p08\CFJ\EGT\J_ML214_ZZ-DR-EN-0004\10_Geology\Drawing_10_41.mxd



- Legend**
- Proposed Scheme Detail
 - Aqueduct Diversion
 - Watercourse Diversions
 - Drainage
 - 200 SuDS ID
 - ▭ Assessment Boundary - Permanent Works
 - ▭ Assessment Boundary - Temporary Works
 - WR1 Winter Resilience Tree Belt (Indicative)
 - ▭ Candidate Peat Re-use Areas
 - ▭ Provisional Temporary Storage Areas
- Peat Model: Depth Contours (m bgl)**
- ▭ No Peat
 - ▭ 0.0 - 0.5
 - ▭ 0.5 - 1
 - ▭ 1 - 1.5
 - ▭ 1.5 - 2
 - ▭ 2 - 2.5
 - ▭ 2.5 - 3
 - ▭ 3 - 3.5
 - ▭ 3.5 - 4
 - ▭ 4 - 4.5
 - ▭ 4.5 - 5
- Peat Contour Lines (1m)
- 1 Contour Labels (m bgl)

SCALE 1:5000

| | | | | | |
|-----|-----|--------|-------------------|----|-----|
| P02 | S3 | NOV 17 | FINAL REVISIONS | HA | JF |
| P01 | S3 | AUG 17 | DRAFT FOR COMMENT | HA | JF |
| REV | SUJ | DATE | DESCRIPTION | BY | APP |

ch2m: FAIRHURST
 CH2MHILL Fairhurst JV
 C/O: City Park 368 Alexandra Parade Glasgow G31 3AU
 Tel + 44 (0) 141 552 2000 Fax +44 (0) 141 552 2525



PROJECT 8 DALWHINNIE TO CRUBENMORE EIA
ASSESSMENT PLAN
DRAWING 10.42
PEAT MITIGATION AREAS
 chainage 23000 to 24600

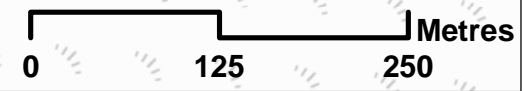
| | | | |
|---------------|--------------|------------|------------|
| DESIGN: CK | DRAWN: HA | CHK: CK | APP: JF |
|---------------|--------------|------------|------------|

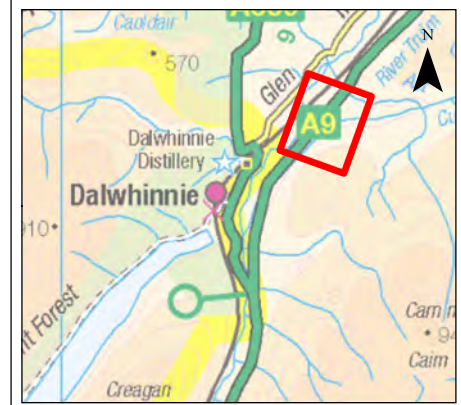
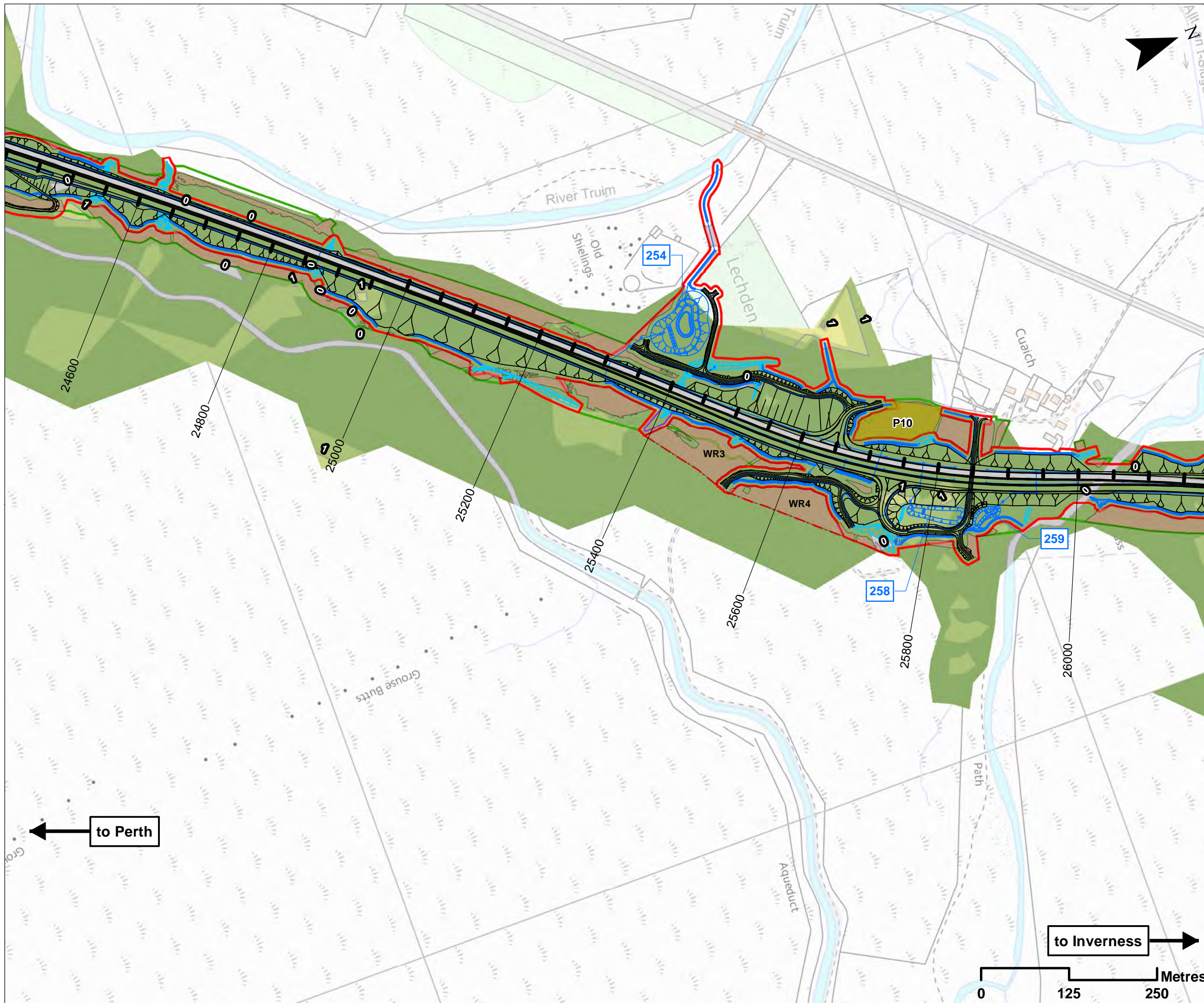
DATE: 07/12/2017
 PROJ: 495298

| | | |
|--|------------------|--------------------|
| DWG: A9P08-CFJ-EGT-J_ML230_ZZ-DR-EN-0004 | | |
| SHEET: 4 OF 9 | REVISION: C01 | SUITABILITY: A3 |

to Inverness →

← to Perth





- Legend**
- Proposed Scheme Detail
 - Watercourse Diversions
 - Drainage
 - 200 SuDS ID
 - Compensatory Storage Areas
 - Assessment Boundary - Permanent Works
 - Assessment Boundary - Temporary Works
 - WR1 Winter Resilience Tree Belt (Indicative)
 - Candidate Peat Re-use Areas
 - Provisional Temporary Storage Areas
- Peat Model:**
Depth Contours (m bgl)
- No Peat
 - 0.0 - 0.5
 - 0.5 - 1
 - 1 - 1.5
 - 1.5 - 2
- Peat Contour Lines (1m)
- ⓪ Contour Labels (m bgl)

SCALE 1:5000

| | | | | | |
|-----|------|--------|-------------------|----|-----|
| P02 | S3 | NOV 17 | FINAL REVISIONS | HA | JF |
| P01 | S3 | AUG 17 | DRAFT FOR COMMENT | HA | JF |
| REV | SUIT | DATE | DESCRIPTION | BY | APP |

ch2m. FAIRHURST
 CH2MHILL Fairhurst JV
 C/O: City Park 368 Alexandra Parade Glasgow G31 3AU
 Tel + 44 (0) 141 552 2000 Fax +44 (0) 141 552 2525



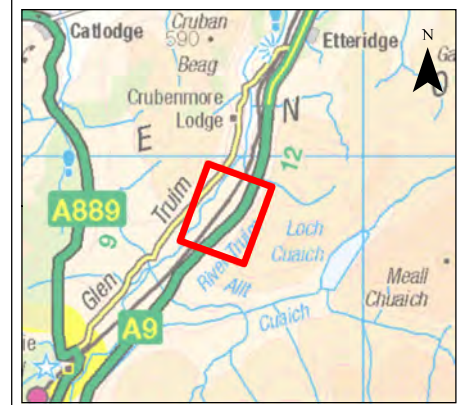
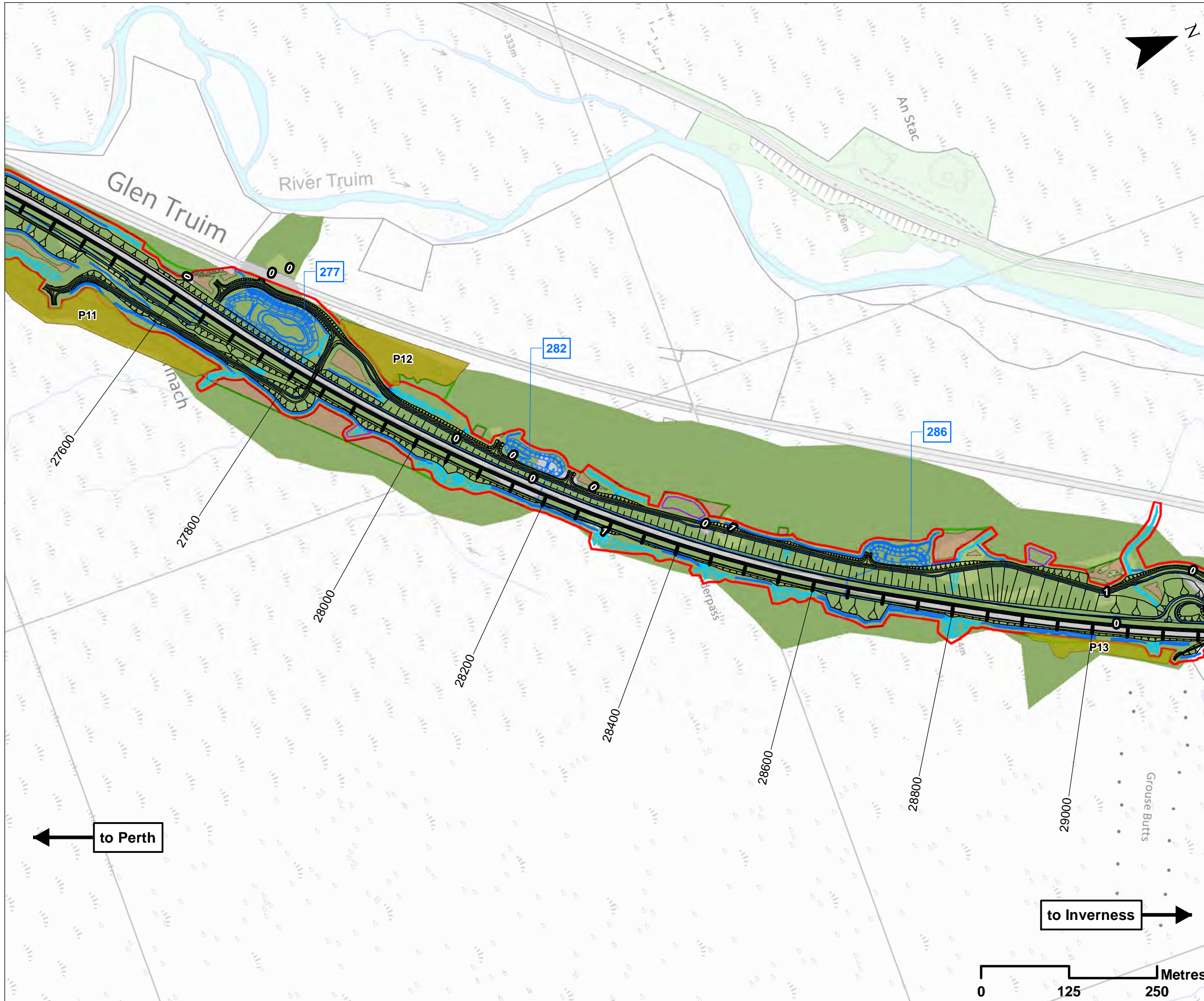
PROJECT 8 DALWHINNIE TO CRUBENMORE EIA
ASSESSMENT PLAN
DRAWING 10.43
PEAT MITIGATION AREAS
 chainage 24600 to 26000

| | | | |
|---------------|--------------|------------|------------|
| DESIGN: CK | DRAWN: HA | CHK: CK | APP: JF |
|---------------|--------------|------------|------------|

DATE: 07/12/2017
 PROJ: 495298

| | | |
|--|------------------|--------------------|
| DWG: A9P08-CFJ-EGT-J_ML246_ZZ-DR-EN-0004 | | |
| SHEET: 5 OF 9 | REVISION: C01 | SUITABILITY: A3 |

Document Path: \\g:\p08\CFJ\EGT\A9_Dualling\10.43\Drawings\10.43\10.43.mxd



- Legend**
- Proposed Scheme Detail
 - Watercourse Diversions
 - Drainage
 - 200 SuDS ID
 - Compensatory Storage Areas
 - Assessment Boundary - Permanent Works
 - Assessment Boundary - Temporary Works
 - Candidate Peat Re-use Areas
 - Provisional Temporary Storage Areas
- Peat Model:**
Depth Contours (m bgl)
- No Peat
 - 0.0 - 0.5
 - 0.5 - 1
 - 1 - 1.5
 - 1.5 - 2
- Peat Contour Lines (1m)
- 1 Contour Labels (m bgl)

SCALE 1:5000

| | | | | | |
|-----|------|--------|-------------------|----|-----|
| P02 | S3 | NOV 17 | FINAL REVISIONS | HA | JF |
| P01 | S3 | AUG 17 | DRAFT FOR COMMENT | HA | JF |
| REV | SUIT | DATE | DESCRIPTION | BY | APP |

ch2m: FAIRHURST
 CH2MHILL Fairhurst JV
 C/O: City Park 368 Alexandra Parade Glasgow G31 3AU
 Tel + 44 (0) 141 552 2000 Fax +44 (0) 141 552 2525



PROJECT 8 DALWHINNIE TO CRUBENMORE EIA
ASSESSMENT PLAN
DRAWING 10.45
PEAT MITIGATION AREAS
 chainage 27600 to 29000

| | | | |
|---------|--------|------|------|
| DESIGN: | DRAWN: | CHK: | APP: |
| CK | HA | CK | JF |

DATE: 07/12/2017

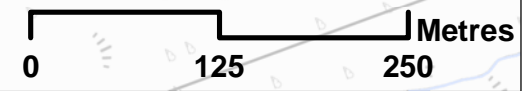
PROJ: 495298

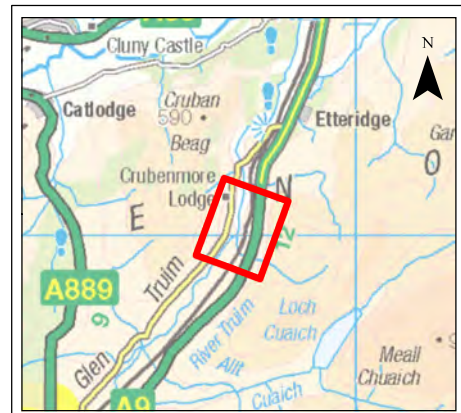
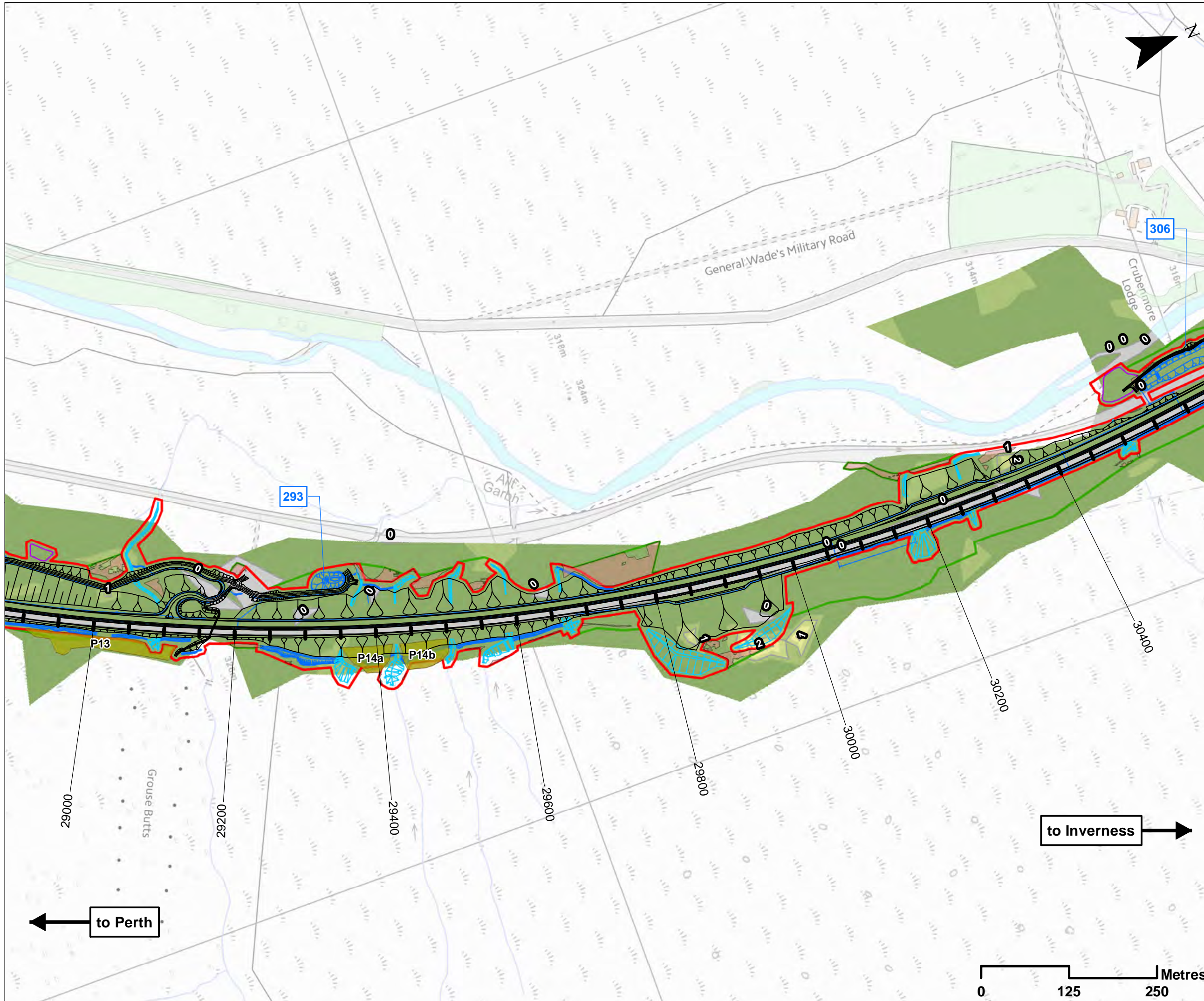
DWG: A9P08-CFJ-EGT-J ML276 ZZ-DR-EN-0004

| | | |
|--------|-----------|--------------|
| SHEET: | REVISION: | SUITABILITY: |
| 7 OF 9 | C01 | A3 |

to Inverness →

← to Perth





- Legend**
- Proposed Scheme Detail
 - Watercourse Diversions
 - Drainage
 - 200 SuDS ID
 - Compensatory Storage
 - Assessment Boundary - Permanent Works
 - Assessment Boundary - Temporary Works
 - Candidate Peat Re-use
 - Provisional Temporary Storage Areas
- Peat Model:**
Depth Contours (m bgl)
- No Peat
 - 0.0 - 0.5
 - 0.5 - 1
 - 1 - 1.5
 - 1.5 - 2
 - 2 - 2.5
- Peat Contour Lines (1m)
- 1 Contour Labels (m bgl)

SCALE 1:5000

| | | | | | |
|-----|------|--------|-------------------|----|-----|
| P02 | S3 | NOV 17 | FINAL REVISIONS | HA | JF |
| P01 | S3 | AUG 17 | DRAFT FOR COMMENT | HA | JF |
| REV | SUIT | DATE | DESCRIPTION | BY | APP |

ch2m: FAIRHURST
 CH2MHILL Fairhurst JV
 C/O: City Park 368 Alexandra Parade Glasgow G31 3AU
 Tel + 44 (0) 141 552 2000 Fax +44 (0) 141 552 2525



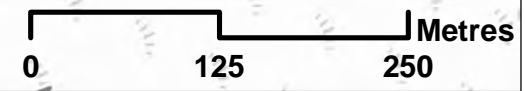
PROJECT 8 DALWHINNIE TO CRUBENMORE EIA
ASSESSMENT PLAN
DRAWING 10.46
PEAT MITIGATION AREAS
 chainage 29000 to 30400

| | | | |
|---------|--------|------|------|
| DESIGN: | DRAWN: | CHK: | APP: |
| CK | HA | CK | JF |

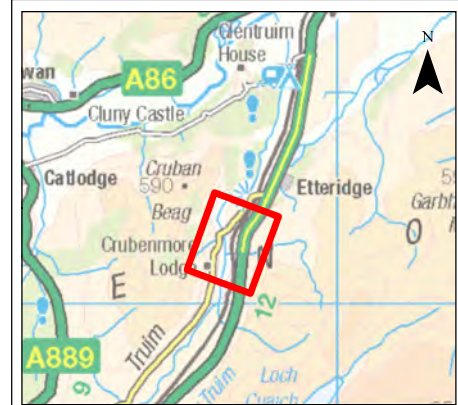
DATE: 07/12/2017
 PROJ: 495298

DWG: A9P08-CFJ-EGT-J_ML290_ZZ-DR-EN-0004

| | | |
|--------|-----------|--------------|
| SHEET: | REVISION: | SUITABILITY: |
| 8 OF 9 | C01 | A3 |



Document Path: \\g:\p08\A9P08-CFJ-EGT-J_ML290_ZZ-DR-EN-0004\10_Geology\Drawing_10_46.mxd



Legend

- Proposed Scheme Detail
- Drainage
- Watercourse Diversions
- 200 SuDS ID
- Compensatory Storage
- Assessment Boundary - Permanent Works
- Assessment Boundary - Temporary Works
- Provisional Temporary Storage Areas

**Peat Model:
Depth Contours (m bgl)**

- No Peat
- 0.0 - 0.5
- 0.5 - 1
- 1 - 1.5
- 1.5 - 2
- 2 - 2.5
- Peat Contour Lines (1m)
- Contour Labels (m bgl)

SCALE 1:5000

| | | | | | |
|-----|------|--------|-------------------|----|-----|
| P02 | S3 | NOV 17 | FINAL REVISIONS | HA | JF |
| P01 | S3 | AUG 17 | DRAFT FOR COMMENT | HA | JF |
| REV | SUIT | DATE | DESCRIPTION | BY | APP |

ch2m: FAIRHURST

CH2MHILL Fairhurst JV
C/O: City Park 368 Alexandra Parade Glasgow G31 3AU
Tel + 44 (0) 141 552 2000 Fax +44 (0) 141 552 2525



**PROJECT 8 DALWHINNIE TO CRUBENMORE EIA
ASSESSMENT PLAN
DRAWING 10.47
PEAT MITIGATION AREAS
chainage 30000 to 31050**

| | | | |
|---------------|--------------|------------|------------|
| DESIGN: CK | DRAWN: HA | CHK: CK | APP: JF |
|---------------|--------------|------------|------------|

DATE: 07/12/2017

PROJ: 495298

DWG: A9P08-CFJ-EGT-J_ML300_ZZ-DR-EN-0003

| | | |
|------------------|------------------|--------------------|
| SHEET: 9 OF 9 | REVISION: C01 | SUITABILITY: A3 |
|------------------|------------------|--------------------|

