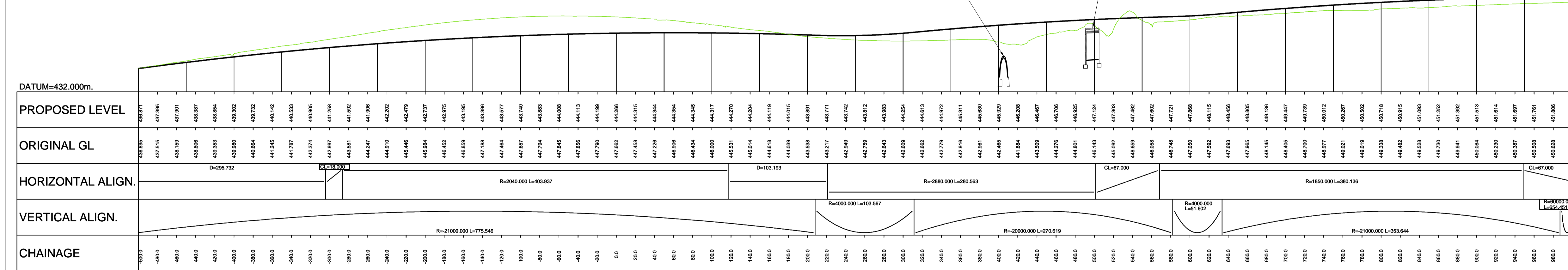


**GENERAL NOTES**

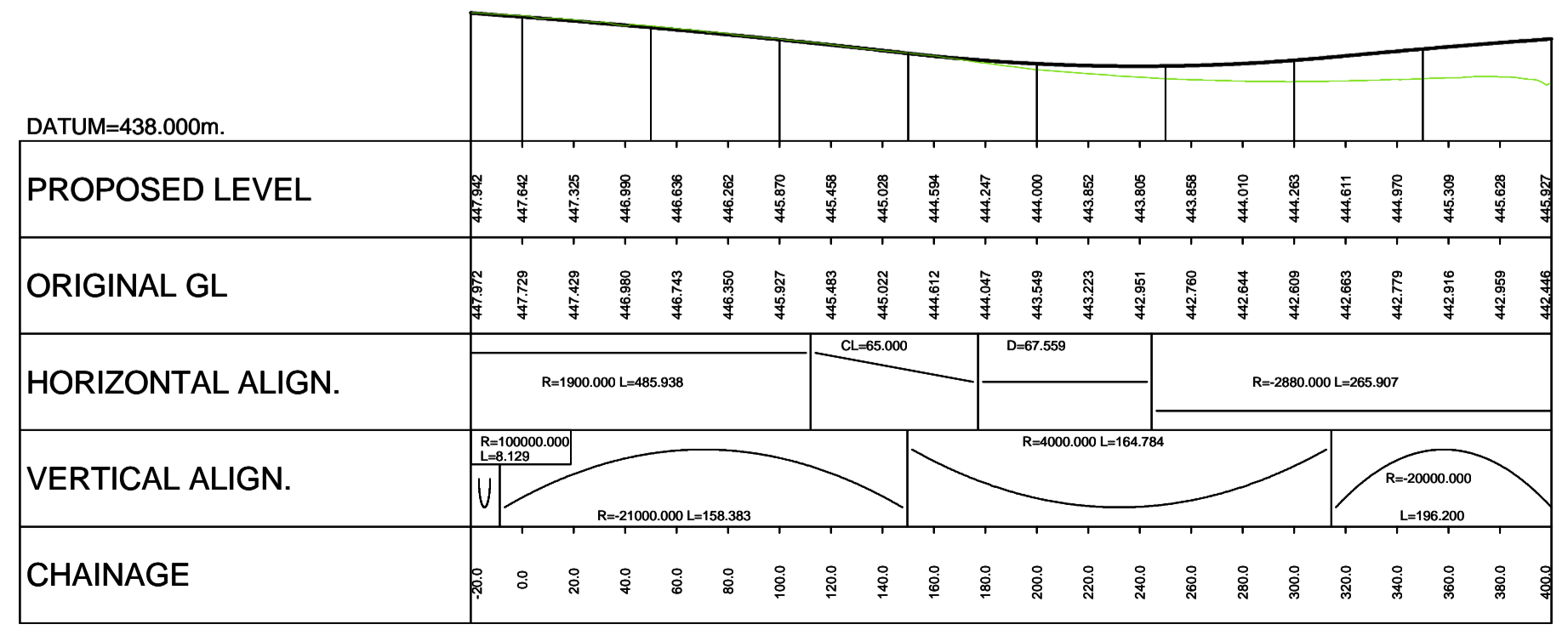
- ALL DIMENSIONS IN METRES UNLESS STATED OTHERWISE.
- THE MAINLINE ALIGNMENTS INCORPORATE VARIED EARTHWORKS SLOPES. WHERE POSSIBLE EARTHWORKS SLOPES HAVE BEEN ADJUSTED TO ACCOMMODATE LANDSCAPING CONSIDERATIONS. IN ADDITION, EARTHWORKS SLOPES HAVE BEEN STEEPENED WHERE NECESSARY TO MINIMISE IMPACTS ON ADJACENT CONSTRAINTS SUCH AS THE AQUEDUCT, RAILWAY AND WHERE ROCK CUTS ARE ANTICIPATED.

**LEGEND:**

- LAND MADE AVAILABLE (LMA)
- EARTHWORKS CUTTING
- EARTHWORKS EMBANKMENT
- SLOPE BETWEEN CARRIAGEWAYS
- CULVERTS / WATERCOURSE STRUCTURE
- CARRIAGEWAY
- VERGE / CENTRAL RESERVE
- DITCH
- SWALE
- WATER COURSE DIVERSION
- BEAULTY TO DENNY POWER LINE, PYLONS AND EXCLUSION ZONE



**LONG SECTION NORTHBOUND**  
SCALE 1:2500H/1:500V



**LONG SECTION SOUTHBOUND**  
SCALE 1:2500H/1:500V

REV	SUIT	DATE	DESCRIPTION	BY	APP
P01	S3	18-08-16	1st Issue	RY	RG

**ch2m FAIRHURST**  
CH2M HILL Fairhurst JV  
C/O: City Park 368 Alexandra Parade Glasgow G31 3AU  
Tel +44 (0)141 552 2000 Fax +44 (0)141 552 2525

**TRANSPORT SCOTLAND**  
COMMERCIAL AREA

**A9 DUALING**  
PERTH TO INVERNESS  
Glen Garry to Dalwhinnie

PROJECT 07  
**GLEN GARRY TO DALWHINNIE**  
DMRB STAGE 3  
**PLAN AND PROFILE (AERIAL)**

DESIGN:	DRAWN:	CHK:	APP:
S CZUPRYNSKI	R YOUNG	S CZUPRYNSKI	R GRAY

1:2500 at A1 (1:5000 at A3)

DATE: 08/01/18  
PROJ: 495298  
DWG: A9P07-CFJ-HML-L\_ML000\_ML-DR-RD-0015  
SHEET: 1 of 7 REVISION: P01 SUITABILITY: S3

Reproduced by permission of Ordnance Survey on behalf of Her Majesty's Stationary Office, © Crown copyright and database right 2017. All rights reserved. Ordnance Survey Licence Number: 100046668.

A9P07-CFJ-HML-L\_ML000\_ML-DR-RD-0015.dwg