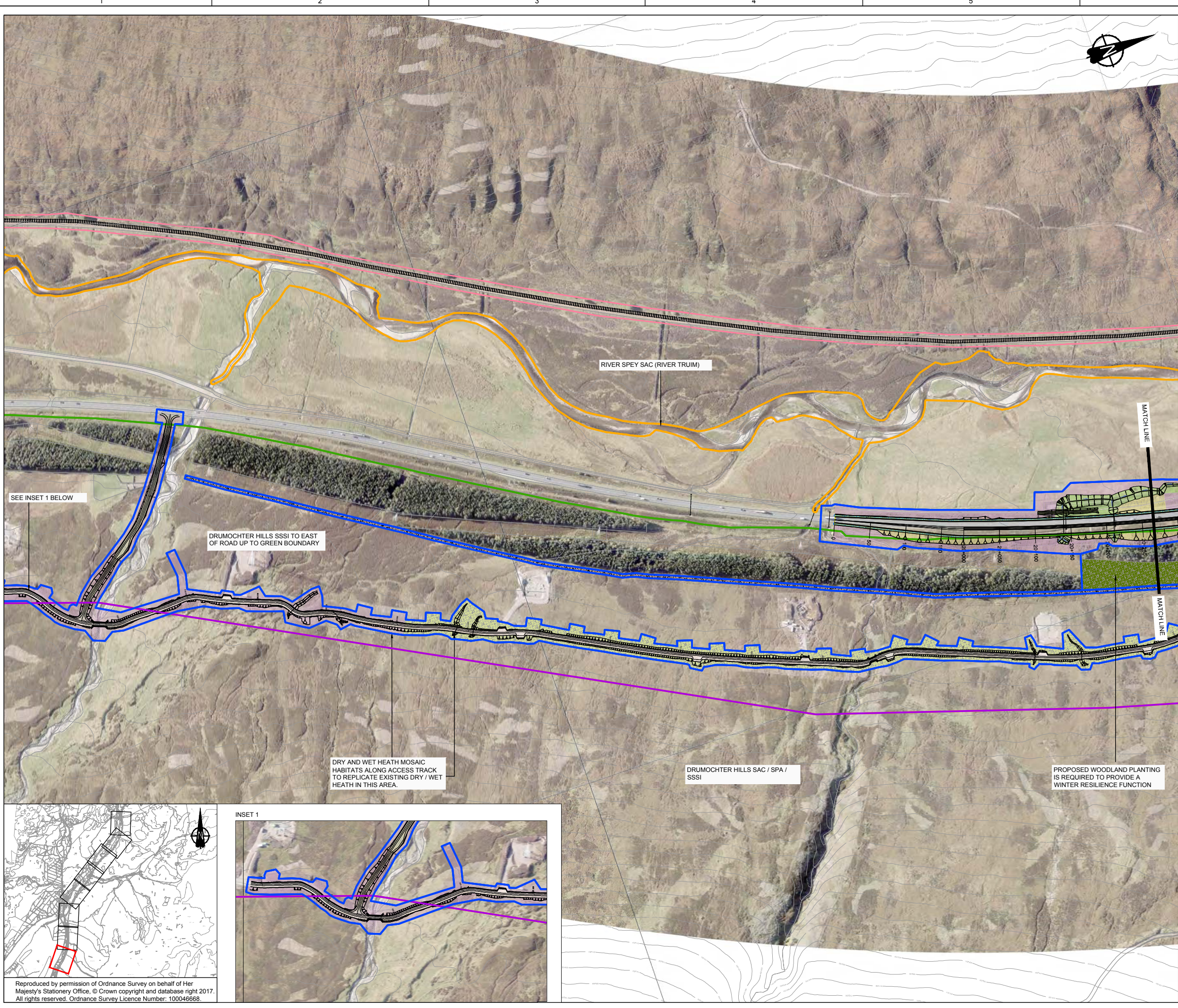




**A9 Dualling Dalwhinnie to Crubenmore
Draft Orders Public Exhibition
17th January & 18th January 2018
Environmental Statement
Environmental Mitigation Drawings**



GENERAL NOTES

1. ALL DIMENSIONS IN METRES UNLESS STATED OTHERWISE.

- KEY**
- LAND MADE AVAILABLE BOUNDARY
 - SCHEME
 - SuDS BASIN
- EXISTING**
- SSSI
 - SAC
 - SPA
 - WOODLAND
 - RIVER / STREAM / LOCHS
 - RAIL
 - 5M CONTOURS
- PROPOSED MITIGATION**
- EXCLUSION ZONES
 - NATIVE WOODLAND PLANTING
 - NATIVE WOODLAND EDGE
 - WET WOODLAND PLANTING
 - SHRUB PLANTING
 - WET HEATH
 - DRY HEATH
 - ACID GRASSLAND
 - WET GRASSLAND
 - GRASS VERGE
 - PEAT RESTORATION AREAS
 - SCATTERED TREES
 - DEER FENCING
 - OTTER FENCING
 - COMBINED FENCING
 - DRY TUNNEL FOR MEDIUM SIZED MAMMALS
 - CULVERT WITH LEDGE FOR MEDIUM SIZED MAMMALS
 - STRUCTURE FOR MEDIUM SIZED MAMMALS
 - STRUCTURE WITH LEDGE FOR LARGE SIZED MAMMALS
 - STRUCTURE SUITABLE FOR LARGE SIZED MAMMALS
 - LANDFORM SENSITIVE EARTHWORKS
 - CROSS SECTION LOCATIONS

- GENERAL NOTES:**
1. SOME AREAS WITHIN THE LMA ARE PROVIDED TO ACCOMMODATE TEMPORARY WORKS. IN THE EVENT THAT THIS LAND IS ONLY LIGHTLY WORKED OR TRAFFICKED (E.G. FOR MATERIALS LAYDOWN OR STOCKPILING), THE PRESUMPTION IS REINSTATEMENT TO ENABLE RECOVERY OF EXISTING HABITAT.
 2. WHERE TEMPORARY WORKS RESULT IN LAND BEING HEAVILY WORKED (E.G. EXCAVATED FOR TEMPORARY SuDS), THE MITIGATION SHOWN IS REQUIRED.
 3. HABITATS AND VEGETATION WITHIN 'EXCLUSION ZONES' WILL BE RETAINED AND PROTECTED DURING CONSTRUCTION STAGE. PROTECTIVE MEASURES TO BE IN ACCORDANCE WITH BS5837: 2012 TREES IN RELATION TO CONSTRUCTION RECOMMENDATIONS.
 4. REQUIRED SEEDING AND PLANTING MIXES ARE DETAILED IN APPENDIX 6.1 OF THE ENVIRONMENTAL STATEMENT.

REV	SUIT	DATE	DESCRIPTION	BY	APP
P03	S3	30-11-17	FINAL REVISIONS	ST	JF
P02	S3	12-10-17	INTERNAL REVISIONS	ST	JF
P01	S3	03-08-17	DRAFT FOR COMMENT	ST	JF

ch2m FAIRHURST
 CH2M HILL Fairhurst JV
 C/O: City Park 368 Alexandra Parade Glasgow G31 3AU
 Tel +44 (0)141 552 2000 Fax +44 (0)141 552 2525

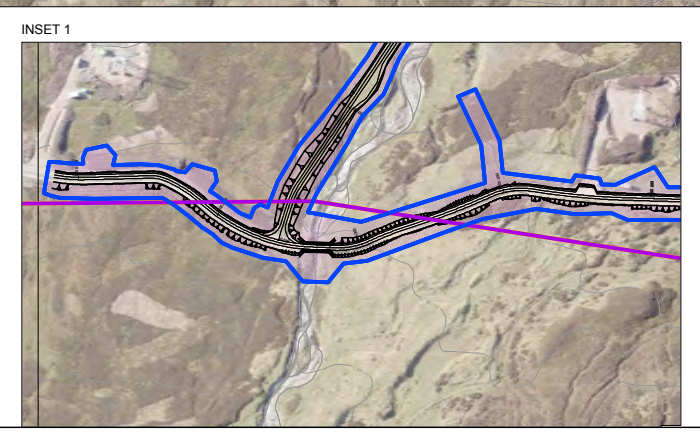
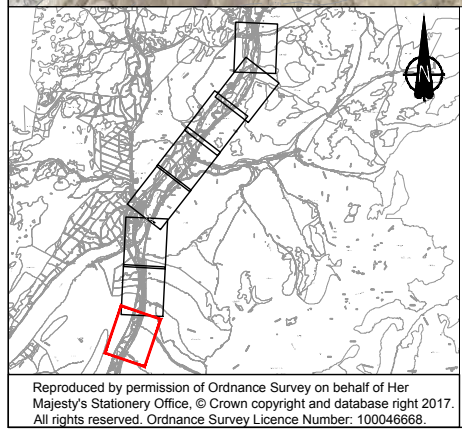


**PROJECT 8 DALWHINNIE TO CRUBENMORE
 DMRB STAGE 3
 DRAWING 6.1
 ENVIRONMENTAL MITIGATION**

DESIGN:	DRAWN:	CHK:	APP:
SWG	AW	SWG	JF

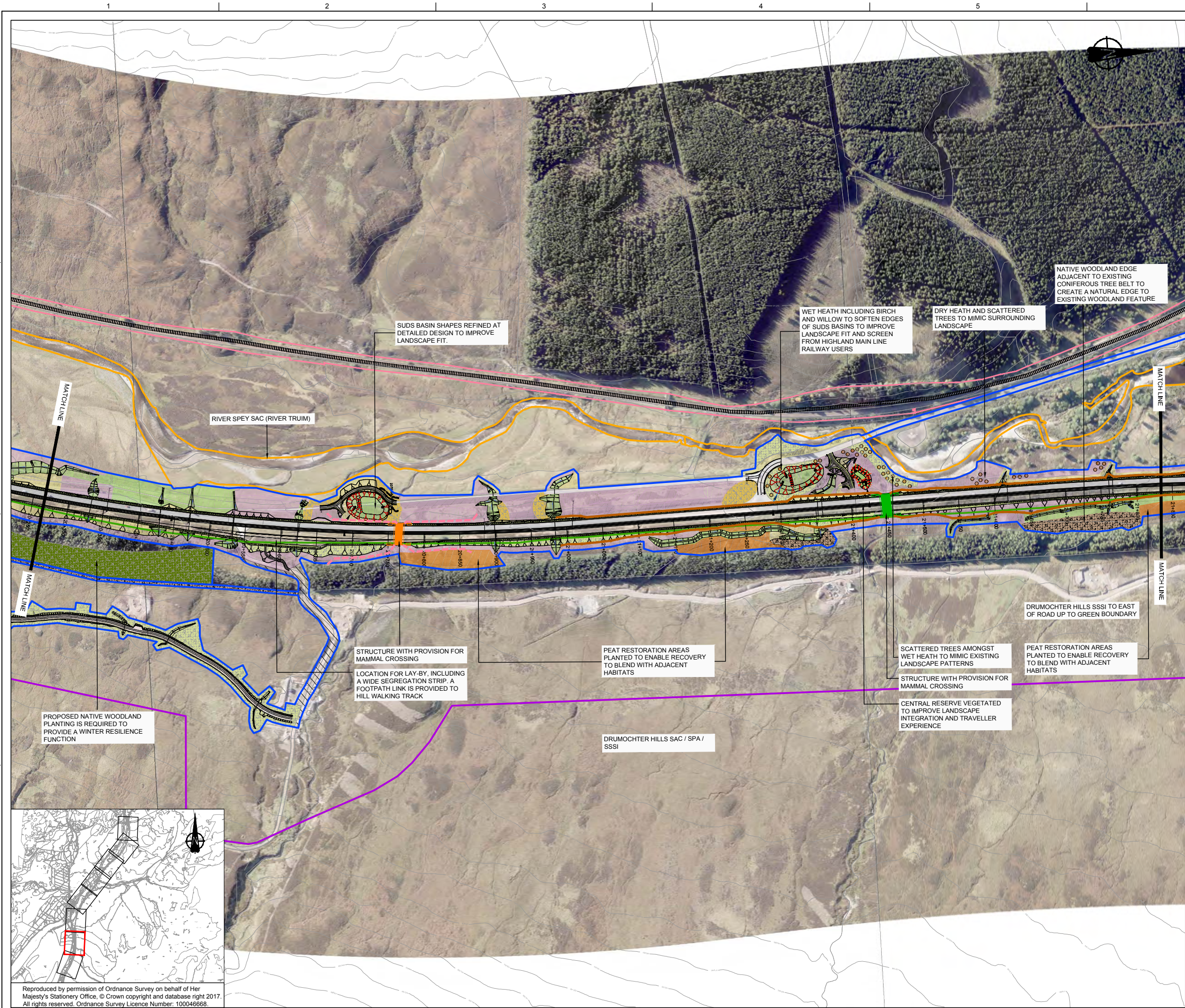
SCALE 1:2500 @A1

DATE:	03/11/16
PROJ:	495298
DWG:	A9P08-CFJ-EGN-J_MLZZZ_ZZ-DR-EN-0027
SHEET:	1 of 8
REVISION:	C01
SUITABILITY:	A3



Reproduced by permission of Ordnance Survey on behalf of Her Majesty's Stationery Office, © Crown copyright and database right 2017. All rights reserved. Ordnance Survey Licence Number: 100046668.

A9P08-CFJ-EGN-J_MLZZZ_ZZ-DR-EN-0027.dwg



GENERAL NOTES

1. ALL DIMENSIONS IN METRES UNLESS STATED OTHERWISE.

- KEY**
- LAND MADE AVAILABLE BOUNDARY
 - SCHEME
 - SUDS BASIN
- EXISTING**
- SSSI
 - SAC
 - SPA
 - WOODLAND
 - RIVER / STREAM / LOCHS
 - RAIL
 - 5M CONTOURS
- PROPOSED MITIGATION**
- EXCLUSION ZONES
 - NATIVE WOODLAND PLANTING
 - NATIVE WOODLAND EDGE
 - WET WOODLAND PLANTING
 - SHRUB PLANTING
 - WET HEATH
 - DRY HEATH
 - ACID GRASSLAND
 - WET GRASSLAND
 - GRASS VERGE
 - PEAT RESTORATION AREAS
 - SCATTERED TREES
 - DEER FENCING
 - OTTER FENCING
 - COMBINED FENCING
 - DRY TUNNEL FOR MEDIUM SIZED MAMMALS
 - CULVERT WITH LEDGE FOR MEDIUM SIZED MAMMALS
 - STRUCTURE FOR MEDIUM SIZED MAMMALS
 - STRUCTURE WITH LEDGE FOR LARGE SIZED MAMMALS
 - STRUCTURE SUITABLE FOR LARGE SIZED MAMMALS
 - LANDFORM SENSITIVE EARTHWORKS
 - CROSS SECTION LOCATIONS

- GENERAL NOTES:**
1. SOME AREAS WITHIN THE LMA ARE PROVIDED TO ACCOMMODATE TEMPORARY WORKS. IN THE EVENT THAT THIS LAND IS ONLY LIGHTLY WORKED OR TRAFFICKED (E.G. FOR MATERIALS LAYDOWN OR STOCKPILING), THE PRESUMPTION IS REINSTATEMENT TO ENABLE RECOVERY OF EXISTING HABITAT.
 2. WHERE TEMPORARY WORKS RESULT IN LAND BEING HEAVILY WORKED (E.G. EXCAVATED FOR TEMPORARY SUDS), THE MITIGATION SHOWN IS REQUIRED.
 3. HABITATS AND VEGETATION WITHIN 'EXCLUSION ZONES' WILL BE RETAINED AND PROTECTED DURING CONSTRUCTION STAGE. PROTECTIVE MEASURES TO BE IN ACCORDANCE WITH BSS837: 2012 TREES IN RELATION TO CONSTRUCTION RECOMMENDATIONS.
 4. REQUIRED SEEDING AND PLANTING MIXES ARE DETAILED IN APPENDIX 6.1 OF THE ENVIRONMENTAL STATEMENT.

REV	SUIT	DATE	DESCRIPTION	BY	APP
P03	S3	30-11-17	FINAL REVISIONS	ST	JF
P02	S3	12-10-17	INTERNAL REVISIONS	ST	JF
P01	S3	03-08-17	DRAFT FOR COMMENT	ST	JF

ch2m FAIRHURST
 CH2M HILL Fairhurst JV
 C/O: City Park 368 Alexandra Parade Glasgow G31 3AU
 Tel +44 (0)141 552 2000 Fax +44 (0)141 552 2525

TRANSPORT SCOTLAND
 COMBIDUAL ALBA

A9 DUALING
 PARTNERSHIP WITH THE UNIVERSITY OF GLASGOW

**PROJECT 8 DALWHINNIE TO CRUBENMORE
 DMRB STAGE 3
 DRAWING 6.2
 ENVIRONMENTAL MITIGATION**

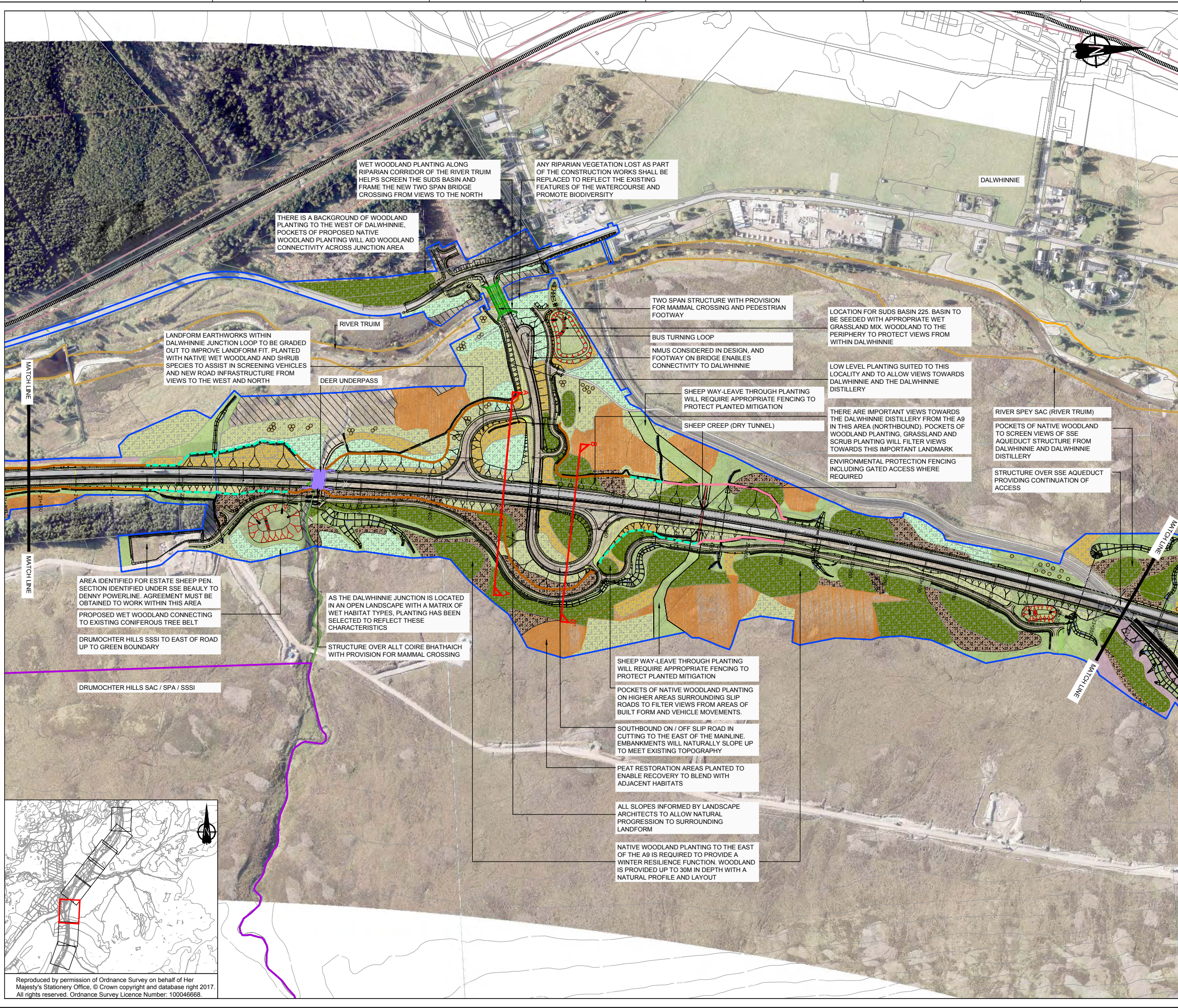
DESIGN:	DRAWN:	CHK:	APP:
SWG	AW	SWG	JF

SCALE 1:2500 @A1

DATE:	03/11/16
PROJ:	495298
DWG:	A9P08-CFJ-EGN-J_MLZZZ_ZZ-DR-EN-0028
SHEET:	2 of 8
REVISION:	C01
SUITABILITY:	A3

Reproduced by permission of Ordnance Survey on behalf of Her Majesty's Stationery Office, © Crown copyright and database right 2017. All rights reserved. Ordnance Survey Licence Number: 100046668.

A9P08-CFJ-EGN-J_MLZZZ_ZZ-DR-EN-0028.dwg



GENERAL NOTES

1. ALL DIMENSIONS IN METRES UNLESS STATED OTHERWISE.

- KEY**
- LAND MADE AVAILABLE BOUNDARY
 - SCHEME
 - SUDS BASIN
- EXISTING**
- SSSI
 - SAC
 - SPA
 - WOODLAND
 - RIVER / STREAM / LOCHS
 - RAIL
 - 5M CONTOURS
- PROPOSED MITIGATION**
- EXCLUSION ZONES
 - NATIVE WOODLAND PLANTING
 - NATIVE WOODLAND EDGE
 - WET WOODLAND PLANTING
 - SHRUB PLANTING
 - WET HEATH
 - DRY HEATH
 - ACID GRASSLAND
 - WET GRASSLAND
 - GRASS VERGE
 - PEAT RESTORATION AREAS
 - SCATTERED TREES
 - DEER FENCING
 - OTTER FENCING
 - COMBINED FENCING
 - DRY TUNNEL FOR MEDIUM SIZED MAMMALS
 - CULVERT WITH LEDGE FOR MEDIUM SIZED MAMMALS
 - STRUCTURE FOR MEDIUM SIZED MAMMALS
 - STRUCTURE WITH LEDGE FOR LARGE SIZED MAMMALS
 - STRUCTURE SUITABLE FOR LARGE SIZED MAMMALS
 - LANDFORM SENSITIVE EARTHWORKS
 - CROSS SECTION LOCATIONS

- GENERAL NOTES:**
1. SOME AREAS WITHIN THE LMA ARE PROVIDED TO ACCOMMODATE TEMPORARY WORKS, IN THE EVENT THAT THIS LAND IS ONLY LIGHTLY WORKED OR TRAFFICKED (E.G. FOR MATERIALS LAYDOWN OR STOCKPILING), THE PRESUMPTION IS REINSTATEMENT TO ENABLE RECOVERY OF EXISTING HABITAT.
 2. WHERE TEMPORARY WORKS RESULT IN LAND BEING HEAVILY WORKED (E.G. EXCAVATED FOR TEMPORARY SUDS), THE MITIGATION SHOWN IS REQUIRED.
 3. HABITATS AND VEGETATION WITHIN 'EXCLUSION ZONES' WILL BE RETAINED AND PROTECTED DURING CONSTRUCTION STAGE. PROTECTIVE MEASURES TO BE IN ACCORDANCE WITH BS5837: 2012 TREES IN RELATION TO CONSTRUCTION RECOMMENDATIONS.
 4. REQUIRED SEEDING AND PLANTING MIXES ARE DETAILED IN APPENDIX 6.1 OF THE ENVIRONMENTAL STATEMENT.

REV	SUIT	DATE	DESCRIPTION	BY	APP
P03	S3	30-11-17	FINAL REVISIONS	ST	JF
P02	S3	12-10-17	INTERNAL REVISIONS	ST	JF
P01	S3	03-08-17	DRAFT FOR COMMENT	ST	JF



CH2M HILL Fairhurst JV
 C/O: City Park 368 Alexandra Parade Glasgow G31 3AU
 Tel +44 (0)141 552 2000 Fax +44 (0)141 552 2525



**PROJECT 8 DALWHINNIE TO CRUBENMORE
 DMRB STAGE 3
 DRAWING 6.3
 ENVIRONMENTAL MITIGATION**

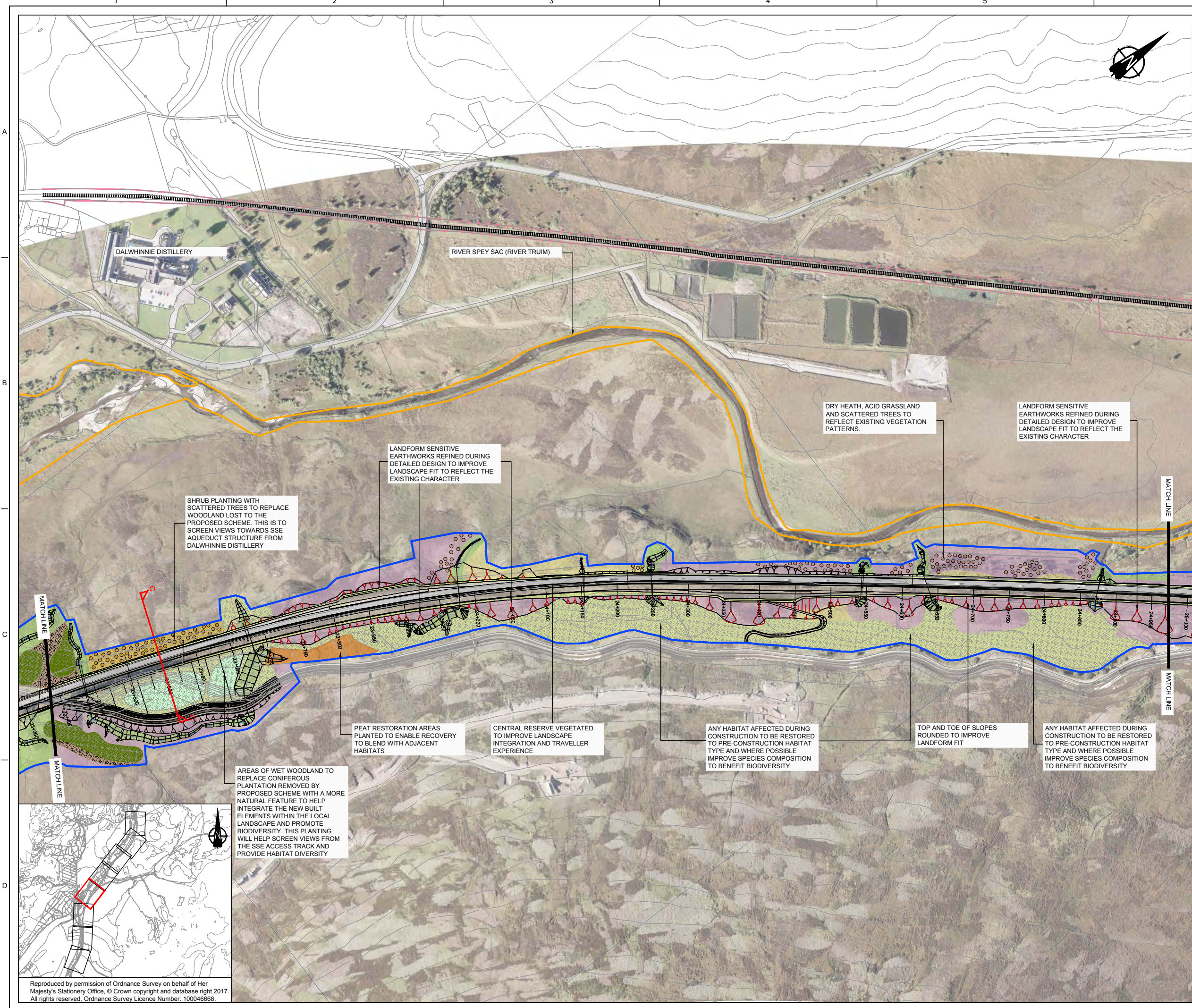
DESIGN:	DRAWN:	CHK:	APP:
SWG	AW	SWG	JF

SCALE 1:2500 @A1

DATE:	03/11/16
PROJ:	495298
DWG:	A9P08-CFJ-EGN-J_MLZZZ_ZZ-DR-EN-0029
SHEET:	3 of 8
REVISION:	C01
SUITABILITY:	A3

Reproduced by permission of Ordnance Survey on behalf of Her Majesty's Stationery Office, © Crown copyright and database right 2017. All rights reserved. Ordnance Survey Licence Number: 100046668.

A9P08-CFJ-EGN-J_MLZZZ_ZZ-DR-EN-0029.dwg



GENERAL NOTES

1. ALL DIMENSIONS IN METRES UNLESS STATED OTHERWISE.

- KEY**
- LAND MADE AVAILABLE BOUNDARY
 - SCHEME
 - SuDS BASIN
- EXISTING**
- SSSI
 - SAC
 - SPA
 - WOODLAND
 - RIVER / STREAM / LOCHS
 - RAIL
 - 5M CONTOURS
- PROPOSED MITIGATION**
- EXCLUSION ZONES
 - NATIVE WOODLAND PLANTING
 - NATIVE WOODLAND EDGE
 - WET WOODLAND PLANTING
 - SHRUB PLANTING
 - WET HEATH
 - DRY HEATH
 - ACID GRASSLAND
 - WET GRASSLAND
 - GRASS VERGE
 - PEAT RESTORATION AREAS
 - SCATTERED TREES
 - DEER FENCING
 - OTTER FENCING
 - COMBINED FENCING
 - DRY TUNNEL FOR MEDIUM SIZED MAMMALS
 - CULVERT WITH LEDGE FOR MEDIUM SIZED MAMMALS
 - STRUCTURE FOR MEDIUM SIZED MAMMALS
 - STRUCTURE WITH LEDGE FOR LARGE SIZED MAMMALS
 - STRUCTURE SUITABLE FOR LARGE SIZED MAMMALS
 - LANDFORM SENSITIVE EARTHWORKS
 - CROSS SECTION LOCATIONS

- GENERAL NOTES:**
1. SOME AREAS WITHIN THE LMA ARE PROVIDED TO ACCOMMODATE TEMPORARY WORKS. IN THE EVENT THAT THIS LAND IS ONLY LIGHTLY WORKED OR TRAFFICKED (E.G. FOR MATERIALS LAYDOWN OR STOCKPILING), THE PRESUMPTION IS REINSTATEMENT TO ENABLE RECOVERY OF EXISTING HABITAT.
 2. WHERE TEMPORARY WORKS RESULT IN LAND BEING HEAVILY WORKED (E.G. EXCAVATED FOR TEMPORARY SuDS), THE MITIGATION SHOWN IS REQUIRED.
 3. HABITATS AND VEGETATION WITHIN 'EXCLUSION ZONES' WILL BE RETAINED AND PROTECTED DURING CONSTRUCTION STAGE. PROTECTIVE MEASURES TO BE IN ACCORDANCE WITH BS5837: 2012 TREES IN RELATION TO CONSTRUCTION RECOMMENDATIONS.
 4. REQUIRED SEEDING AND PLANTING MIXES ARE DETAILED IN APPENDIX 6.1 OF THE ENVIRONMENTAL STATEMENT.

P03	S3	30-11-17	FINAL REVISIONS	ST	JF
P02	S3	12-10-17	INTERNAL REVISIONS	ST	JF
P01	S3	03-08-17	DRAFT FOR COMMENT	ST	JF
REV	SUIT	DATE	DESCRIPTION	BY	APP

ch2m FAIRHURST
 CH2M HILL Fairhurst JV
 C/O: City Park 368 Alexandra Parade Glasgow G31 3AU
 Tel +44 (0)141 552 2000 Fax +44 (0)141 552 2525



**PROJECT 8 DALWHINNIE TO CRUBENMORE
 DMRB STAGE 3
 DRAWING 6.4
 ENVIRONMENTAL MITIGATION**

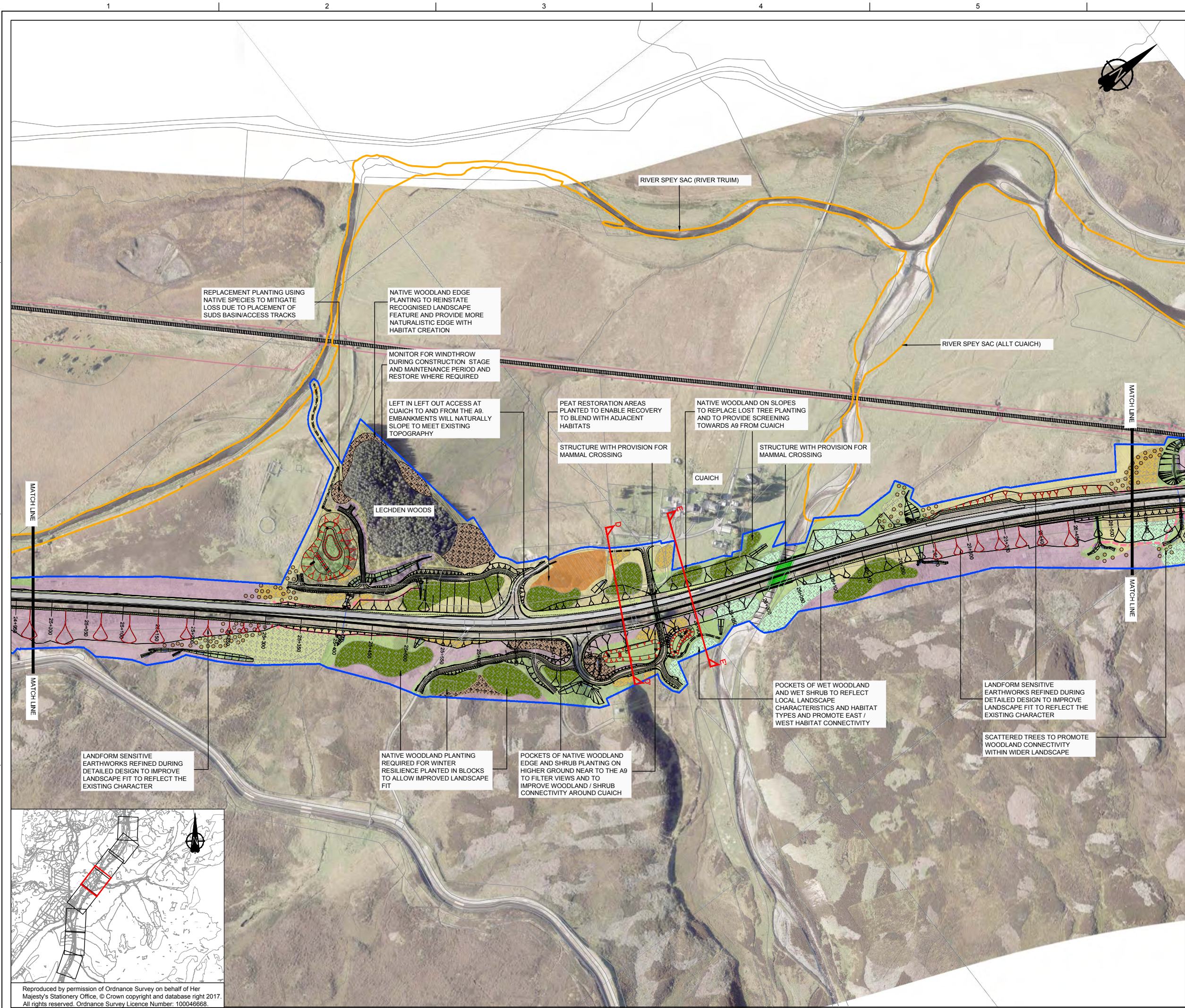
DESIGN:	DRAWN:	CHK:	APP:
SWG	AW	SWG	

SCALE 1:2500 @A1

DATE:	03/11/16
PROJ:	495298
DWG:	A9P08-CFJ-EGN-J_MLZZZ_ZZ-DR-EN-0030
SHEET:	4 of 8
REVISION:	C01
SUITABILITY:	A3

Reproduced by permission of Ordnance Survey on behalf of Her Majesty's Stationery Office, © Crown copyright and database right 2017. All rights reserved. Ordnance Survey Licence Number: 100046668.

A9P08-CFJ-EGN-J_MLZZZ_ZZ-DR-EN-0030.dwg



GENERAL NOTES

1. ALL DIMENSIONS IN METRES UNLESS STATED OTHERWISE.

- KEY**
- LAND MADE AVAILABLE BOUNDARY
 - SCHEME
 - SuDS BASIN
- EXISTING**
- SSSI
 - SAC
 - SPA
 - WOODLAND
 - RIVER / STREAM / LOCHS
 - RAIL
 - 5M CONTOURS
- PROPOSED MITIGATION**
- EXCLUSION ZONES
 - NATIVE WOODLAND PLANTING
 - NATIVE WOODLAND EDGE
 - WET WOODLAND PLANTING
 - SHRUB PLANTING
 - WET HEATH
 - DRY HEATH
 - ACID GRASSLAND
 - WET GRASSLAND
 - GRASS VERGE
 - PEAT RESTORATION AREAS
 - SCATTERED TREES
 - DEER FENCING
 - OTTER FENCING
 - COMBINED FENCING
 - DRY TUNNEL FOR MEDIUM SIZED MAMMALS
 - CULVERT WITH LEDGE FOR MEDIUM SIZED MAMMALS
 - STRUCTURE FOR MEDIUM SIZED MAMMALS
 - STRUCTURE WITH LEDGE FOR LARGE SIZED MAMMALS
 - STRUCTURE SUITABLE FOR LARGE SIZED MAMMALS
 - LANDFORM SENSITIVE EARTHWORKS
 - CROSS SECTION LOCATIONS

- GENERAL NOTES:**
1. SOME AREAS WITHIN THE LMA ARE PROVIDED TO ACCOMMODATE TEMPORARY WORKS. IN THE EVENT THAT THIS LAND IS ONLY LIGHTLY WORKED OR TRAFFICKED (E.G. FOR MATERIALS LAYDOWN OR STOCKPILING), THE PRESUMPTION IS REINSTATEMENT TO ENABLE RECOVERY OF EXISTING HABITAT.
 2. WHERE TEMPORARY WORKS RESULT IN LAND BEING HEAVILY WORKED (E.G. EXCAVATED FOR TEMPORARY SuDS), THE MITIGATION SHOWN IS REQUIRED.
 3. HABITATS AND VEGETATION WITHIN 'EXCLUSION ZONES' WILL BE RETAINED AND PROTECTED DURING CONSTRUCTION STAGE. PROTECTIVE MEASURES TO BE IN ACCORDANCE WITH BS5837: 2012 TREES IN RELATION TO CONSTRUCTION RECOMMENDATIONS.
 4. REQUIRED SEEDING AND PLANTING MIXES ARE DETAILED IN APPENDIX 6.1 OF THE ENVIRONMENTAL STATEMENT.

REV	SUIT	DATE	DESCRIPTION	BY	APP
P03	S3	30-11-17	FINAL REVISIONS	ST	JF
P02	S3	12-10-17	INTERNAL REVISIONS	ST	JF
P01	S3	03-08-17	DRAFT FOR COMMENT	ST	JF

ch2m FAIRHURST
 CH2M HILL Fairhurst JV
 C/O: City Park 368 Alexandra Parade Glasgow G31 3AU
 Tel +44 (0)141 552 2000 Fax +44 (0)141 552 2525

TRANSPORT SCOTLAND
 COMBIDUAL ALBA

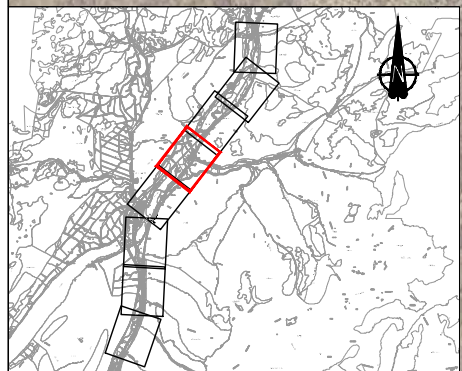
A9 DUALING
 PARTNERSHIP WITH THE UNIVERSITY OF GLASGOW

**PROJECT 8 DALWHINNIE TO CRUBENMORE
 DMRB STAGE 3
 DRAWING 6.5
 ENVIRONMENTAL MITIGATION**

DESIGN:	DRAWN:	CHK:	APP:
SWG	AW	SWG	JF

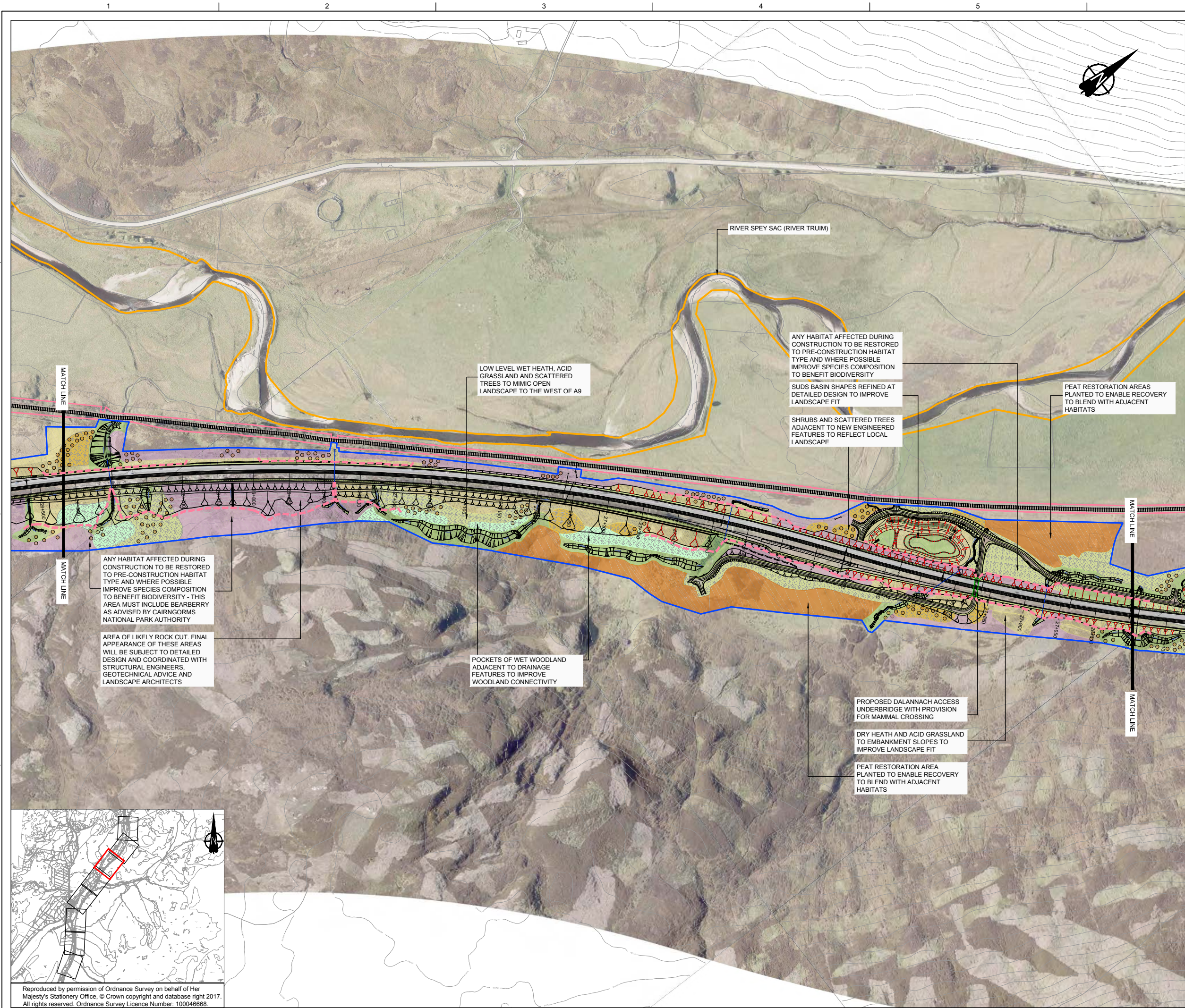
SCALE 1:2500 @A1

DATE:	03/11/16
PROJ:	495298
DWG:	A9P08-CFJ-EGN-J_MLZZZ_ZZ-DR-EN-0031
SHEET:	5 of 8
REVISION:	C01
SUITABILITY:	A3



Reproduced by permission of Ordnance Survey on behalf of Her Majesty's Stationery Office, © Crown copyright and database right 2017. All rights reserved. Ordnance Survey Licence Number: 100046668.

A9P08-CFJ-EGN-J_MLZZZ_ZZ-DR-EN-0031.dwg



GENERAL NOTES

1. ALL DIMENSIONS IN METRES UNLESS STATED OTHERWISE.

- KEY**
- LAND MADE AVAILABLE BOUNDARY
 - SCHEME
 - SuDS BASIN
 - EXISTING**
 - SSSI
 - SAC
 - SPA
 - WOODLAND
 - RIVER / STREAM / LOCHS
 - RAIL
 - 5M CONTOURS
 - PROPOSED MITIGATION**
 - EXCLUSION ZONES
 - NATIVE WOODLAND PLANTING
 - NATIVE WOODLAND EDGE
 - WET WOODLAND PLANTING
 - SHRUB PLANTING
 - WET HEATH
 - DRY HEATH
 - ACID GRASSLAND
 - WET GRASSLAND
 - GRASS VERGE
 - PEAT RESTORATION AREAS
 - SCATTERED TREES
 - DEER FENCING
 - OTTER FENCING
 - COMBINED FENCING
 - DRY TUNNEL FOR MEDIUM SIZED MAMMALS
 - CULVERT WITH LEDGE FOR MEDIUM SIZED MAMMALS
 - STRUCTURE FOR MEDIUM SIZED MAMMALS
 - STRUCTURE WITH LEDGE FOR LARGE SIZED MAMMALS
 - STRUCTURE SUITABLE FOR LARGE SIZED MAMMALS
 - LANDFORM SENSITIVE EARTHWORKS
 - CROSS SECTION LOCATIONS

- GENERAL NOTES:**
1. SOME AREAS WITHIN THE LMA ARE PROVIDED TO ACCOMMODATE TEMPORARY WORKS. IN THE EVENT THAT THIS LAND IS ONLY LIGHTLY WORKED OR TRAFFICKED (E.G. FOR MATERIALS LAYDOWN OR STOCKPILING), THE PRESUMPTION IS REINSTATEMENT TO ENABLE RECOVERY OF EXISTING HABITAT.
 2. WHERE TEMPORARY WORKS RESULT IN LAND BEING HEAVILY WORKED (E.G. EXCAVATED FOR TEMPORARY SUDDS), THE MITIGATION SHOWN IS REQUIRED.
 3. HABITATS AND VEGETATION WITHIN 'EXCLUSION ZONES' WILL BE RETAINED AND PROTECTED DURING CONSTRUCTION STAGE. PROTECTIVE MEASURES TO BE IN ACCORDANCE WITH BS5837: 2012 TREES IN RELATION TO CONSTRUCTION RECOMMENDATIONS.
 4. REQUIRED SEEDING AND PLANTING MIXES ARE DETAILED IN APPENDIX 6.1 OF THE ENVIRONMENTAL STATEMENT.

REV	SUIT	DATE	DESCRIPTION	BY	APP
P03	S3	30-11-17	FINAL REVISIONS	ST	JF
P02	S3	12-10-17	INTERNAL REVISIONS	ST	JF
P01	S3	03-08-17	DRAFT FOR COMMENT	ST	JF

ch2m FAIRHURST
 CH2M HILL Fairhurst JV
 C/O: City Park 368 Alexandra Parade Glasgow G31 3AU
 Tel +44 (0)141 552 2000 Fax +44 (0)141 552 2525

TRANSPORT SCOTLAND
 COMHAIL ALBA

A9 DUALING
 PARTNERSHIP IN COLLABORATION

**PROJECT 8 DALWHINNIE TO CRUBENMORE
 DMRB STAGE 3
 DRAWING 6.6
 ENVIRONMENTAL MITIGATION**

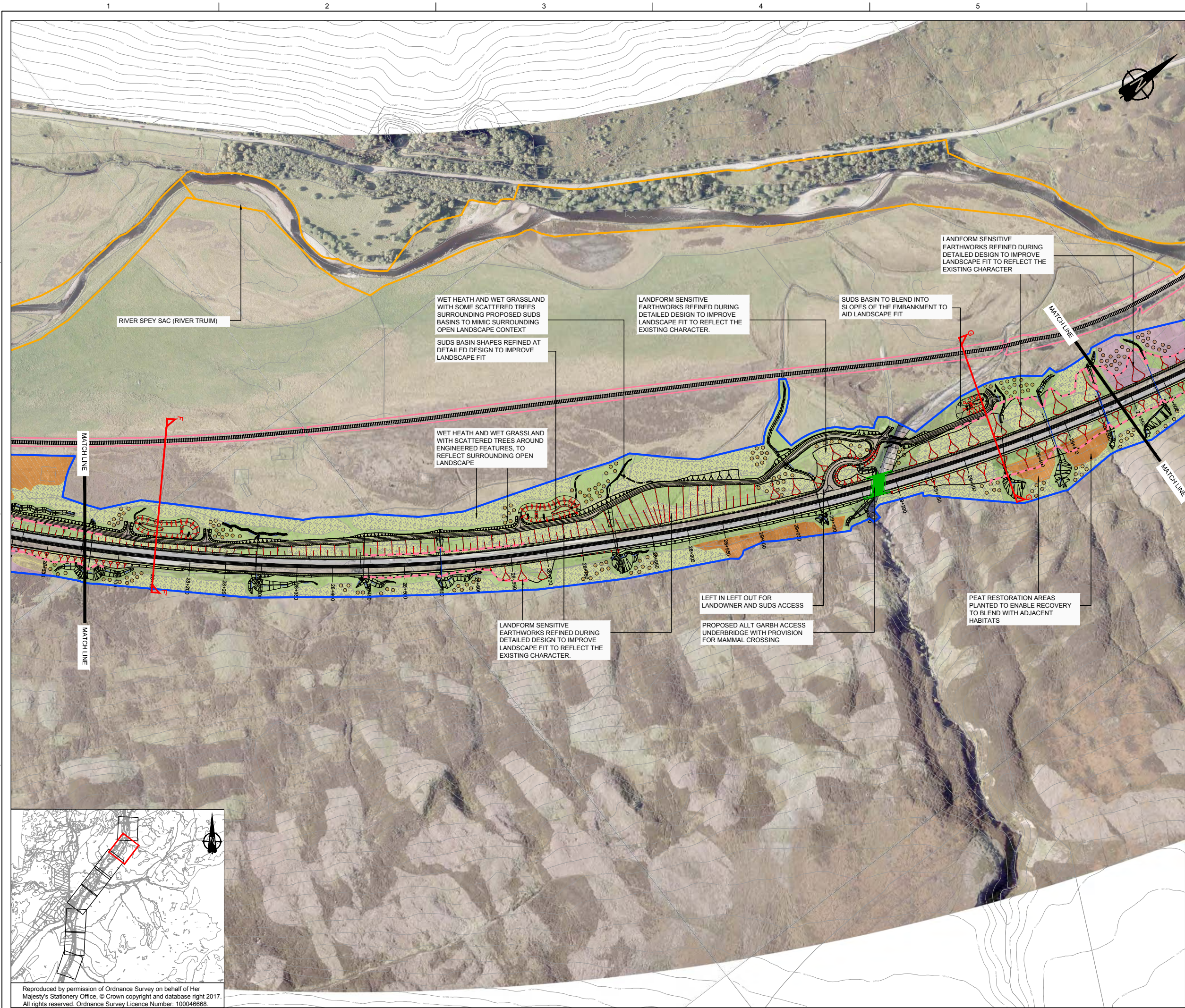
DESIGN:	DRAWN:	CHK:	APP:
SWG	AW	SWG	JF

SCALE 1:2500 @A1

DATE: 03/11/16
 PROJ: 495298
 DWG: A9P08-CFJ-EGN-J_MLZZZ_ZZ-DR-EN-0032
 SHEET: 6 of 8 REVISION: C01 SUITABILITY: A3

Reproduced by permission of Ordnance Survey on behalf of Her Majesty's Stationery Office, © Crown copyright and database right 2017. All rights reserved. Ordnance Survey Licence Number: 100046668.

A9P08-CFJ-EGN-J_MLZZZ_ZZ-DR-EN-0032.dwg



GENERAL NOTES

1. ALL DIMENSIONS IN METRES UNLESS STATED OTHERWISE.

- KEY**
- LAND MADE AVAILABLE BOUNDARY
 - SCHEME
 - SUDS BASIN
- EXISTING**
- SSSI
 - SAC
 - SPA
 - WOODLAND
 - RIVER / STREAM / LOCHS
 - RAIL
 - 5M CONTOURS
- PROPOSED MITIGATION**
- EXCLUSION ZONES
 - NATIVE WOODLAND PLANTING
 - NATIVE WOODLAND EDGE
 - WET WOODLAND PLANTING
 - SHRUB PLANTING
 - WET HEATH
 - DRY HEATH
 - ACID GRASSLAND
 - WET GRASSLAND
 - GRASS VERGE
 - PEAT RESTORATION AREAS
 - SCATTERED TREES
 - DEER FENCING
 - OTTER FENCING
 - COMBINED FENCING
 - DRY TUNNEL FOR MEDIUM SIZED MAMMALS
 - CULVERT WITH LEDGE FOR MEDIUM SIZED MAMMALS
 - STRUCTURE FOR MEDIUM SIZED MAMMALS
 - STRUCTURE WITH LEDGE FOR LARGE SIZED MAMMALS
 - STRUCTURE SUITABLE FOR LARGE SIZED MAMMALS
 - LANDFORM SENSITIVE EARTHWORKS
 - CROSS SECTION LOCATIONS

- GENERAL NOTES:**
1. SOME AREAS WITHIN THE LMA ARE PROVIDED TO ACCOMMODATE TEMPORARY WORKS. IN THE EVENT THAT THIS LAND IS ONLY LIGHTLY WORKED OR TRAFFICKED (E.G. FOR MATERIALS LAYDOWN OR STOCKPILING), THE PRESUMPTION IS REINSTATEMENT TO ENABLE RECOVERY OF EXISTING HABITAT.
 2. WHERE TEMPORARY WORKS RESULT IN LAND BEING HEAVILY WORKED (E.G. EXCAVATED FOR TEMPORARY SUDS), THE MITIGATION SHOWN IS REQUIRED.
 3. HABITATS AND VEGETATION WITHIN 'EXCLUSION ZONES' WILL BE RETAINED AND PROTECTED DURING CONSTRUCTION STAGE. PROTECTIVE MEASURES TO BE IN ACCORDANCE WITH BS5837: 2012 TREES IN RELATION TO CONSTRUCTION RECOMMENDATIONS.
 4. REQUIRED SEEDING AND PLANTING MIXES ARE DETAILED IN APPENDIX 6.1 OF THE ENVIRONMENTAL STATEMENT.

REV	SUIT	DATE	DESCRIPTION	BY	APP
P03	S3	30-11-17	FINAL REVISIONS	ST	JF
P02	S3	12-10-17	INTERNAL REVISIONS	ST	JF
P01	S3	03-08-17	DRAFT FOR COMMENT	ST	JF

ch2m FAIRHURST
 CH2M HILL Fairhurst JV
 C/O: City Park 368 Alexandra Parade Glasgow G31 3AU
 Tel +44 (0)141 552 2000 Fax +44 (0)141 552 2525



**PROJECT 8 DALWHINNIE TO CRUBENMORE
 DMRB STAGE 3
 DRAWING 6.7
 ENVIRONMENTAL MITIGATION**

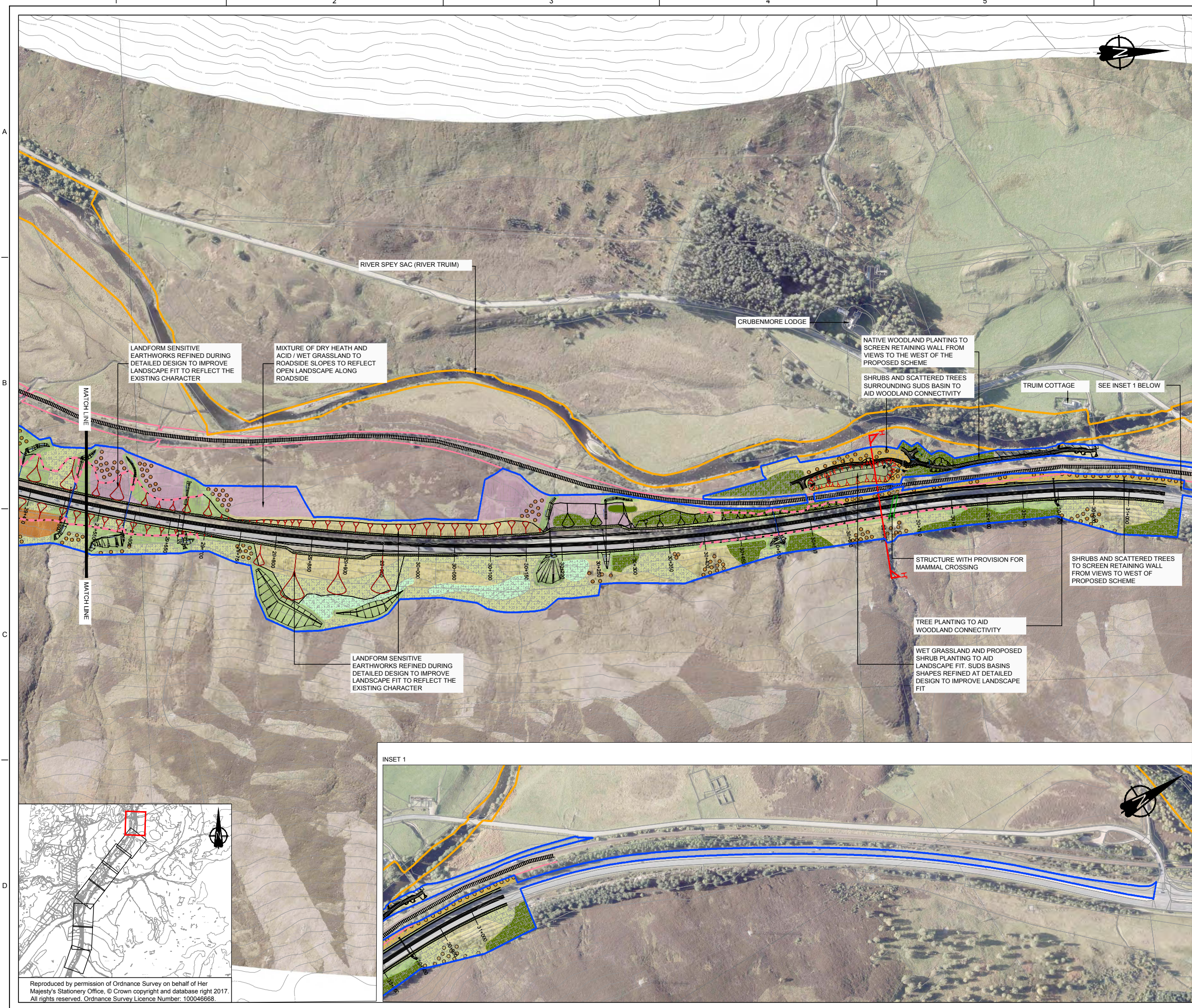
DESIGN:	DRAWN:	CHK:	APP:
SWG	AW	SWG	JF

SCALE 1:2500 @A1

DATE:	03/11/16
PROJ:	495298
DWG:	A9P08-CFJ-EGN-J_MLZZZ_ZZ-DR-EN-0033
SHEET:	7 of 8
REVISION:	C01
SUITABILITY:	A3

Reproduced by permission of Ordnance Survey on behalf of Her Majesty's Stationery Office, © Crown copyright and database right 2017. All rights reserved. Ordnance Survey Licence Number: 100046668.

A9P08-CFJ-EGN-J_MLZZZ_ZZ-DR-EN-0033.dwg



GENERAL NOTES

1. ALL DIMENSIONS IN METRES UNLESS STATED OTHERWISE.

- KEY**
- LAND MADE AVAILABLE BOUNDARY
 - SCHEME
 - SuDS BASIN
- EXISTING**
- SSSI
 - SAC
 - SPA
 - WOODLAND
 - RIVER / STREAM / LOCHS
 - RAIL
 - 5M CONTOURS
- PROPOSED MITIGATION**
- EXCLUSION ZONES
 - NATIVE WOODLAND PLANTING
 - NATIVE WOODLAND EDGE
 - WET WOODLAND PLANTING
 - SHRUB PLANTING
 - WET HEATH
 - DRY HEATH
 - ACID GRASSLAND
 - WET GRASSLAND
 - GRASS VERGE
 - PEAT RESTORATION AREAS
 - SCATTERED TREES
 - DEER FENCING
 - OTTER FENCING
 - COMBINED FENCING
 - DRY TUNNEL FOR MEDIUM SIZED MAMMALS
 - CULVERT WITH LEDGE FOR MEDIUM SIZED MAMMALS
 - STRUCTURE FOR MEDIUM SIZED MAMMALS
 - STRUCTURE WITH LEDGE FOR LARGE SIZED MAMMALS
 - STRUCTURE SUITABLE FOR LARGE SIZED MAMMALS
 - LANDFORM SENSITIVE EARTHWORKS
 - CROSS SECTION LOCATIONS

- GENERAL NOTES:**
1. SOME AREAS WITHIN THE LMA ARE PROVIDED TO ACCOMMODATE TEMPORARY WORKS. IN THE EVENT THAT THIS LAND IS ONLY LIGHTLY WORKED OR TRAFFICKED (E.G. FOR MATERIALS LAYDOWN OR STOCKPILING), THE PRESUMPTION IS REINSTATEMENT TO ENABLE RECOVERY OF EXISTING HABITAT.
 2. WHERE TEMPORARY WORKS RESULT IN LAND BEING HEAVILY WORKED (E.G. EXCAVATED FOR TEMPORARY SuDS), THE MITIGATION SHOWN IS REQUIRED.
 3. HABITATS AND VEGETATION WITHIN 'EXCLUSION ZONES' WILL BE RETAINED AND PROTECTED DURING CONSTRUCTION STAGE. PROTECTIVE MEASURES TO BE IN ACCORDANCE WITH BS5837: 2012 TREES IN RELATION TO CONSTRUCTION RECOMMENDATIONS.
 4. REQUIRED SEEDING AND PLANTING MIXES ARE DETAILED IN APPENDIX 6.1 OF THE ENVIRONMENTAL STATEMENT.

REV	SUIT	DATE	DESCRIPTION	BY	APP
P03	S3	30-11-17	FINAL REVISIONS	ST	JF
P02	S3	12-10-17	INTERNAL REVISIONS	ST	JF
P01	S3	03-08-17	DRAFT FOR COMMENT	ST	JF



CH2M HILL Fairhurst JV
 C/O: City Park 368 Alexandra Parade Glasgow G31 3AU
 Tel +44 (0)141 552 2000 Fax +44 (0)141 552 2525



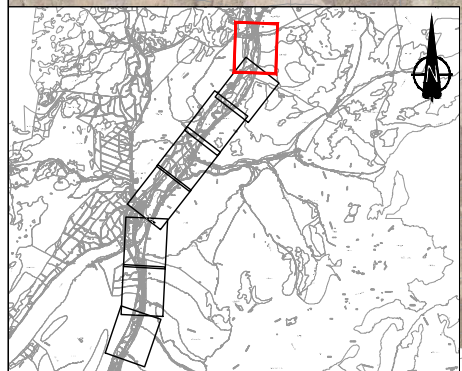
**PROJECT 8 DALWHINNIE TO CRUBENMORE
 DMRB STAGE 3
 DRAWING 6.8
 ENVIRONMENTAL MITIGATION**

DESIGN:	DRAWN:	CHK:	APP:
SWG	AW	SWG	JF

SCALE 1:2500 @A1

DATE:	03/11/16
PROJ:	495298
DWG:	A9P08-CFJ-EGN-J_MLZZZ_ZZ-DR-EN-0034
SHEET:	8 of 8
REVISION:	C01
SUITABILITY:	A3

INSET 1



Reproduced by permission of Ordnance Survey on behalf of Her Majesty's Stationery Office, © Crown copyright and database right 2017. All rights reserved. Ordnance Survey Licence Number: 100046668.

A9P08-CFJ-EGN-J_MLZZZ_ZZ-DR-EN-0034.dwg